

McCall's

M8460

Designed and  
printed in USA

## INFANTS' CHRISTENING GOWN, ROMPER AND BONNET

**Suggested Fabrics:** Broadcloth, Faille, Lightweight Satin, Linen. **Gown A,B,C,D** also in Batiste, Damask, Handkerchief Linen. **Bodice and Bonnet Overlay, Overskirt and Sleeves C:** Single-edged Scalloped Embroidered Organdy or Chiffon. **Bodice and Bonnet Overlay, Overskirt and Sleeves D:** Dotted Swiss, Organdy, Organza. **Bodice and Bonnet Lining A thru F and Vest Lining F:** Cotton, Cotton Blends. Additional Fabric may be needed to match stripes, plaids or one-way design fabric. **Interfacing:** Lightweight Fusible.

**Notions:** **Gown A thru D:** Three ½" (1.3cm) buttons. **Bonnet A thru F:** ¼ yd. (0.2m) of ¼" (6mm) elastic, 1 yd. (1.0m) of ¼" (1cm) ribbon. **Gown and Bonnet A:** 3 yds. (2.8m) of 1" - 1¼" (2.5cm - 3cm) scalloped edging, three appliqués (size and shape as desired). **Gown and Bonnet B:** 3½ yds. (3.2m) of 1½" - 2½" (4cm - 6cm) single-edged lace trim, 1½ yds. (1.5m) of 3" - 4" (8cm - 10cm) pre-gathered lace trim, approx. twenty rosettes or as desired, 6½ yds. (5.9m) of ¼" (1cm) ribbon. **Gown and Bonnet C:** ¼ yd. (0.7m) of 1½" - 2" (4cm - 5cm) sheer pre-gathered scalloped trim, two rosettes. **Gown and Bonnet D:** 3½ yds. (3.2m) of 1½" - 2½" (4cm - 6cm) venise lace, 3½ yds. (3.2m) of ¾" (1.5cm) novelty beaded ribbon trim, 2½ yds. (2.0m) of ¼" - ¾" (1.5cm - 2.2cm) crochet-type lace trim. **Romper E:** Nine ½" (1.3cm) buttons, 1¼ yds. (1.2m) of wide bias tape, eight decorative snap fasteners, ¾ yd. (0.4m) of ½" (1.3cm) ribbon. **Romper F:** Seven ½" (1.3cm) buttons, ¾ yd. (0.4m) of wide bias tape, four decorative snap fasteners, 2¼ yds. (2.1m) of ½" (1.3cm) ribbon.

Sizes	XS	S	M	L
Age	1-3	6	12	18
<b>BODY MEASUREMENTS: Select pattern size based on body measurements</b>				
Weight	8-12	13-17	18-21	22-25
Height	18-24	25-26	27-28	29-30

<b>Gown and Bonnet A,B</b>	45**	2½	2½	2½	2½	Yds.
	60**	1¾	1¾	1¾	1¾	"

<b>Lining A,B,C,D (Bodice and Bonnet)</b>	- 45, 60**	- ¾ yd.	<b>Interfacing A,B,C,D - 20" - ½ yd.</b>	
---	------------	---------	--	--

<b>Gown and Bonnet C,D</b>	45**	2½	2½	2½	2½	Yds.
	60**	1½	1½	1½	1½	"

<b>Bodice and Bonnet Overlay, Overskirt and Sleeves C</b>	45**	2	2½	2½	2½	Yds.
	60**	1½	1½	1½	1½	"

<b>Bodice and Bonnet Overlay, Overskirt and Sleeves D</b>	45**	2½	2½	2½	2½	Yds.
	60**	1½	1½	1½	1½	"

<b>Romper and Bonnet E</b>	45**	1¾	1¾	1¾	1¾	Yds.
	60**	1	1	1	1	"

<b>Lining E (Bodice, Bonnet and Vest)</b>	- 45, 60**	- ¾ yd.	<b>Interfacing E,F - 20" - ½ yd.</b>	
---	------------	---------	--------------------------------------	--

<b>Romper and Bonnet F</b>	45**	- 1¾ yds.	60**	- 1¾ yds.
<b>Lining F (Bodice and Bonnet)</b>	45, 60**		¾ yd.	

	45, 60**		¾ yd.
--	----------	--	-------

\*with nap \*\*without nap

Average

## ROBE DE BAPTÊME, BARBOTEUSE ET BONNET POUR BÉBÉS

**Tissus Conseillés:** Broadcloth, Faille, Satin léger, Toile de lin. **Robe A,B,C,D** aussi en Batiste, Damas, Batiste de lin. **Pièce superposée du corsage et du bonnet, Dessus de jupe et manches C:** Organdi ou mousseline de soie brodé festonné à bord simple. **Pièce superposée du corsage et du bonnet, Dessus de jupe et manches D:** Plumetis, Organdi, Organza. **Doubleure de corsage et de bonnet A à F et Doubleure de gilet F:** Coton, Cottonnades. Il peut être nécessaire du tissu additionnel pour faire coïncider les rayures, les carreaux ou les dessins à sens unique. **Entoilage:** thermocollant léger.

**Mercerie:** **Robe A à D:** 3 boutons de 1.3cm. **Bonnet A à F:** 0.2m d'élastique de 6mm, 1.0m de ruban de 1cm. **Robe et bonnet A:** 2.8m de bordure festonnée de 2.5cm - 3cm, 3 appliqués (taille et forme à volonté). **Robe et bonnet B:** 3.2m de galon de dentelle à bord simple de 4cm - 6cm, 1.5m de galon de dentelle pré-froncée de 8cm - 10cm, environ 20 rosettes ou à volonté, 5.9m de ruban de 1cm. **Robe et bonnet C:** 0.7m de galon festonné pré-froncé transparent de 4cm - 5cm, 2 rosettes. **Robe et bonnet D:** 3.2m de dentelle Venise de 4cm - 6cm, 3.2m de galon de ruban perlé fantaisie de 1.5cm, 2.0m de galon de dentelle type crochet de 1.5cm - 2.2cm. **Barboteuse E:** 9 boutons de 1.3cm, 1.2m de ruban de biais large, 8 boutons-pression décoratifs, 0.4m de ruban de 1.3cm. **Barboteuse F:** 7 boutons de 1.3cm, 0.4m de ruban de biais large, 4 boutons-pression décoratifs, 2.1m de ruban de 1.3cm.

Tailles	TP	P	M	G
Âge	1-3	6	12	18
<b>MESURES DU CORPS: Choisissez la taille du patron basée sur les mesures du corps</b>				
Poids	3.5-5.5	6-8	8-9.5	10-11.5
Hauteur	46-61	64-66	69-71	74-76

<b>Robe et bonnet A,B</b>	115cm*	2.2	2.3	2.5	2.5	m
	150cm*	1.6	1.7	1.7	1.7	"

<b>Doubleure A,B,C,D (Corsage et bonnet)</b>	- 115, 150cm**	- 0.6m	<b>Entoilage A,B,C,D - 51cm- 0.2m</b>	
--	----------------	--------	---------------------------------------	--

<b>Robe et bonnet C,D</b>	115cm*	2.2	2.3	2.3	2.3	m
	150cm*	1.4	1.4	1.5	1.5	"

<b>Pièce superposée du corsage et du bonnet, Dessus de jupe et manches C</b>	115cm*	1.8	1.8	1.9	1.9	m
	150cm*	1.4	1.4	1.5	1.6	"

<b>Pièce superposée du corsage et du bonnet, Dessus de jupe et manches D</b>	115cm*	2.5	2.6	2.6	2.6	m
	150cm*	1.5	1.5	1.5	1.6	"

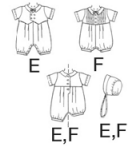
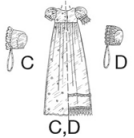
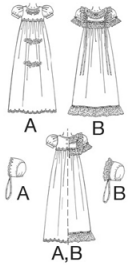
<b>Barboteuse et bonnet E</b>	115cm*	1.1	1.3	1.3	1.4	m
	150cm*	0.9	0.9	1.0	1.0	"

<b>Doubleure E (Corsage, bonnet et gilet)</b>	- 115, 150cm**	- 0.6m	<b>Entoilage E,F - 51cm - 0.5m</b>	
---	----------------	--------	------------------------------------	--

<b>Barboteuse et bonnet F</b>	115cm**	- 1.3m	150cm**	- 1.0m
<b>Doubleure F (Corsage et bonnet)</b>	115, 150cm**	0.6m		

	115, 150cm**	0.6m
--	--------------	------

\*avec sens \*\*sans sens



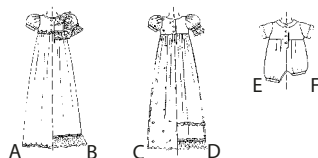
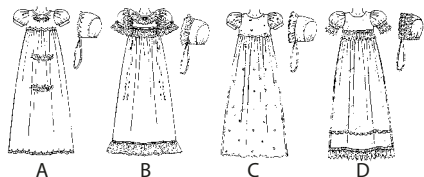
M8460

Page 1 of 4

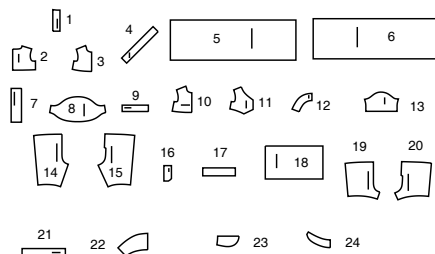
# McCall's®

English

1-800-782-0323

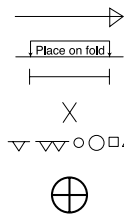


## 24 PATTERN PIECES



- 1 BACK INTERFACING - A,B,C,D,E,F  
 2 BODICE BACK - A,B,C,D,E,F  
 3 BODICE FRONT - A,B,C,D,E,F  
 4 NECK BINDING - A,B  
 5 SKIRT FRONT - A,B,C,D  
 6 SKIRT BACK - A,B,C,D  
 7 CONTINUOUS LAP - A,B,C,D  
 8 SLEEVE - A,B,C,D  
 9 SLEEVE BAND - A,B,C,D  
 10 FRONT OVERLAY - C,D  
 11 VEST FRONT - E  
 12 COLLAR - E,F  
 13 SLEEVE - E,F  
 14 PANTS FRONT - E  
 15 PANTS BACK - E  
 16 BACK FACING - E,F  
 17 LEG BAND - E  
 18 BODICE FRONT - F  
 19 SHORTS FRONT - F  
 20 SHORTS BACK - F  
 21 LEG BAND - F  
 22 BONNET - A,B,C,D,E,F  
 23 BACK FOR BONNET - A,B,C,D,E,F  
 24 BRIM - E,F

## PATTERN MARKINGS



**GRAINLINE:** Place on straight grain of fabric, parallel to selvage or fold.  
**FOLDLINE:** Place line on fold of fabric.  
**BUTTONHOLE MARKING:** Indicates exact length and placement of buttonholes.  
**BUTTON MARKING:** Indicates button placement.

**NOTCHES AND SYMBOLS:** For matching seams and construction details.  
 Indicates the Bustline, Waistline, Hip and/or Biceps. Measurements refer to circumference of Finished Garment (Body Measurement + Wearing Ease + Design Ease). Adjust pattern if necessary. The measurement excludes pleats, tucks, darts and seam allowances.

**SEAM ALLOWANCE:** 5/8" (1.5cm) included unless otherwise indicated, but not printed on tissue.

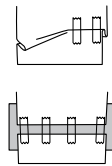
## ADJUST IF NECESSARY

Lengthen or Shorten at adjustment lines (==) or where indicated on pattern. If substantial length is added, you may need to purchase additional fabric.

**TO SHORTEN:** Crease along adjustment line. Make a fold half the amount needed. Tape in place.

**TO LENGTHEN:** Slash between adjustment lines. Spread amount as needed, keeping edges parallel. Tape over paper.

When Alteration lines are not on tissue, lengthen or shorten at lower edge.



## CUTTING AND MARKING

**SHRINK FABRIC** if not labeled pre-shrunk. Press.

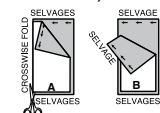
**CIRCLE LAYOUT** for View, Size, Fabric Width.

Use **WITH NAP** layout for fabrics with one-way designs, nap, pile or surface shading. Because most knits have surface shading, a with nap layout is used.

For **DOUBLE THICKNESS (WITH FOLD)** - fold fabric with right sides together.

**\* DOUBLE THICKNESS (WITHOUT FOLD)** - For fabrics with nap, fold fabric crosswise, right sides together. Mark as shown. Cut along crosswise fold of fabric (A). Turn upper layer 180° so arrows go in same direction and place over lower layer, right sides together (B).

For **SINGLE THICKNESS** - place fabric right side up. (For Fur Pile fabrics, place pile side down.)



★ Cut other pieces first, allowing enough fabric to cut this piece. Open fabric. For "Cut 1" pieces, cut piece once on single layer of fabric with piece face up on right side of fabric.

Pattern may have cutting lines for several sizes. Select the proper cutting line or pattern pieces for your size.

Before **CUTTING** place all pieces on fabric according to layout. Pin. (**Layouts show approximate position of pattern pieces; position may vary according to your pattern size.**) Cut **ACCURATELY**, cutting notches outward.

Before removing pattern, **TRANSFER MARKINGS** and lines of construction to Wrong Side of fabric, using the Pin and Chalk Pencil method or Tracing Paper and Dressmaker Wheel. Markings needed on right side of fabric should be thread traced.

**NOTE:** Broken-line boxes (a! b! c!) in layouts represent pieces cut by measurements provided.

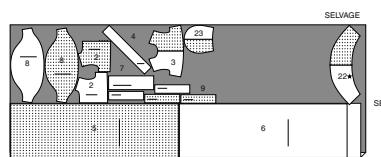
## CUTTING LAYOUTS

RIGHT SIDE OF PATTERN	WRONG SIDE OF PATTERN	RIGHT SIDE OF FABRIC	WRONG SIDE OF FABRIC
-----------------------	-----------------------	----------------------	----------------------

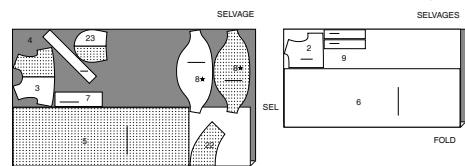
## GOWN AND BONNET A,B

use pieces: 2 3 4 5 6 7 8 9 22 23

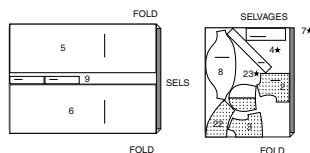
45" (115 cm)  
with nap  
sizes XS S



45" (115 cm)  
with nap  
sizes M L



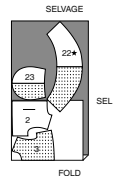
60" (150 cm)  
without nap  
all sizes  
CUT ONE OF PIECES 4 7 23



## LINING A,B,C,D (BODICE AND BONNET)

use pieces: 2 3 22 23

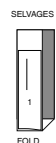
45" or 60" (115cm or 150cm)  
without nap  
all sizes



## INTERFACING A,B,C,D

use pieces: 1

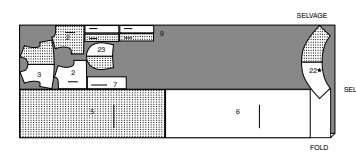
20" (51 cm)  
all sizes



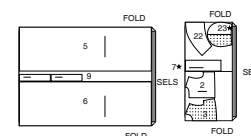
## GOWN AND BONNET C,D

use pieces: 2 3 5 6 7 9 22 23

45" (115 cm)  
with nap  
all sizes



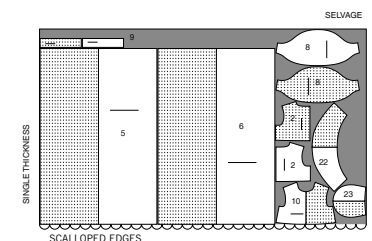
60" (150 cm)  
without nap  
all sizes  
CUT ONE OF PIECES 7 23



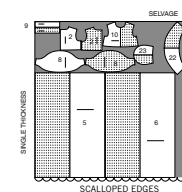
## BODICE AND BONNET OVERLAY, OVERSKIRT AND SLEEVE C

use pieces: 2 5 6 8 9 10 22 23

45" (115 cm)  
with nap  
all sizes



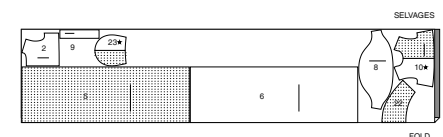
60" (150cm)  
with nap  
all sizes



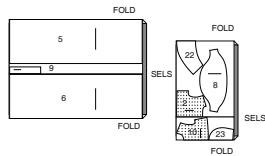
## BODICE AND BONNET OVERLAY, OVERSKIRT AND SLEEVE D

use pieces: 2 5 6 8 9 10 22 23

45" (115 cm)  
with nap  
all sizes  
CUT ONE OF PIECES 10 23



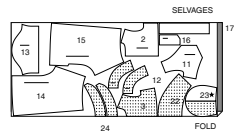
60" (150cm)  
with nap  
all sizes



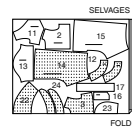
## ROMPER AND BONNET E

use pieces: 2 3 11 12 13 14 15 16 17 22 23 24

45" (115 cm)  
with nap  
all sizes  
CUT ONE OF PIECE 23



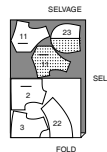
60" (150cm)  
with nap  
all sizes



## LINING E (BODICE, BONNET AND VEST)

use pieces: 2 3 11 22 23

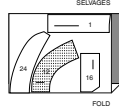
45" (115 cm)  
with nap  
all sizes  
CUT ONE OF PIECE 23



## INTERFACING E,F

use pieces: 1 12 16 24

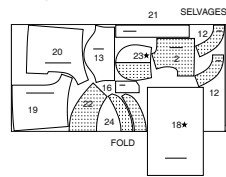
20" (51 cm)  
all sizes



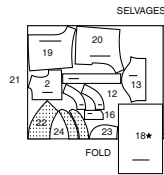
## ROMPER AND BONNET F

use pieces: 2 12 13 16 18 19 20 21 22 23 24

45" (115 cm)  
with nap  
all sizes  
CUT ONE OF PIECES 16 23



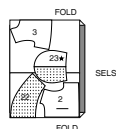
60" (150cm)  
with nap  
all sizes



## LINING F (BODICE AND BONNET)

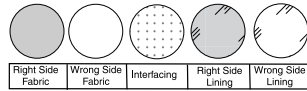
use pieces: 2 3 22 23

45" or 60" (115cm or 150cm)  
without nap  
all sizes



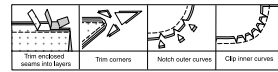
## SEWING INFORMATION

### FABRIC KEY



### SEAM ALLOWANCES

Use 5/8" (1.5cm) seam allowances unless otherwise indicated.



### PIN AND FIT

Pin or baste seams, **RIGHT SIDE TOGETHER**, matching notches. Fit garment before stitching major seams.

### PRESS

Press seam allowances flat; then open unless otherwise stated. Clip where necessary so they lie flat.

## GLOSSARY

Sewing methods in **BOLD TYPE** have Sewing Tutorial Video available. Scan QR CODE to watch videos:

**EASE/GATHER** - see sewing two row gathers video.

**NARROW HEM** - see sewing narrow hems video.

**DOUBLE-STITCH** - see how to double-stitch video.

**REINFORCE** - see how to reinforce video.

**STAYSTITCH** - see how to do stay-stitching video.

**OPTIONAL FOR HEMS:** Apply Seam Binding.

**SLIPSTITCH** - Slide needle through a folded edge, then pick up a thread of underneath fabric.

### SEWING TUTORIALS



Build your skills viewing short, easy-to-follow videos at [simplicity.com/sewingtutorials](http://simplicity.com/sewingtutorials)

## SEWING DIRECTIONS

### GOWN A, B, C, D

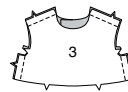
**NOTE:** Under each sub-heading, the first View will be illustrated, unless otherwise indicated

### BODICE A, B

**1.** Pin **BACK INTERFACING** (1) to wrong side of **BODICE BACK** (2), having outer edges even. Baste.

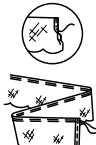


**2.** Stitch bodice backs to **BODICE FRONT** (3) at shoulders and sides.

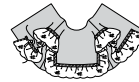


### VIEW B:

**3.** Cut a piece of 1 1/2" (3.8cm) to 2 1/2" (6.3cm) wide lace 54" (137cm) long. Make **NARROW HEM** on ends. **GATHER** upper edge.

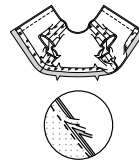


**4.** With right sides up, pin gathered edge of lace slightly over placement line, having one end 5/8" (1.5cm) from left back edge and remaining end at square on right side. Adjust gathers; baste. With right sides up, pin ribbon to bodice, having one long edge along placement line, over lace, folding in fullness at corners. Stitch close to long edges of ribbon.



### VIEW A, B:

**5.** Stitch bodice lining sections together at shoulders and sides. Turn in seam allowance on lower edge of lining. Press. Trim pressed seam allowance to 3/8" (1cm). With right sides together, pin lining to bodice, matching centers. Stitch back edges. Grade seam allowances by cutting to graduated widths and interfacing close to stitching.



**6.** Turn lining to inside. Press. Baste armhole edges. Baste neck edges 3/4" (2cm) away from raw edge. Trim away 5/8" (1.5cm) from neck edge.

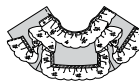


### VIEW B:

**7.** Cut a piece of lace 26" (66cm) long. Make **NARROW HEM** on ends. **GATHER** upper edge.



**8.** With right sides up, pin lace to neck edge, having one end even with left back edge and remaining end at square on right back. Adjust gathers; baste.

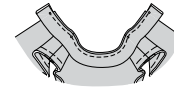


### VIEW A, B:

**9.** With wrong sides together, fold **NECK BINDING** (4) in half lengthwise. Press.



**10.** On outside, pin binding to neck edge, matching centers, placing small dots at shoulder seams, matching remaining symbols. Baste, stretching binding to fit. Stitch in a 3/8" (1cm) seam allowance. Turn in ends. Press.



**11.** Turn binding to inside, over seam. Press. **SLIPSTITCH** folded edge over seam, as shown. **SLIPSTITCH** ends.



### BODICE C, D

**12.** Pin back interfacing (1) to wrong side of bodice back (2), having outer edges even. Baste.



**13.** With right sides up, pin **OVERLAY** (2) to bodice back, matching centers and notches, having raw edges even.



### VIEW C:

**14.** **REINFORCE** side edges of **FRONT OVERLAY** (10) through squares, as shown. Clip to squares. Make **NARROW HEM** on side edges below clips.



**15.** With right sides up, pin overlay to bodice front, matching centers, having raw edges even. Baste.

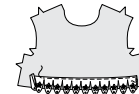


**16.** Stitch bodice backs to bodice front at shoulders and sides.

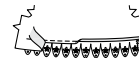


### VIEW D:

**17.** With right sides up, pin straight edge of 1" (2.5cm) to 3" (7.5cm) wide lace 1" (2.5cm) from lower edge of front overlay, turning under 5/8" (1.5cm) on ends. Stitch close to upper straight edge. **SLIPSTITCH** ends.



**18.** Carefully trim fabric beneath lace, leaving a 1/4" (6mm) seam allowance. Press seam allowance toward bodice, as shown.



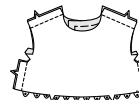
**19.** With right sides up, pin beaded ribbon slightly over long, straight edge of lace. Stitch close to long edges of ribbon.



**20.** With right sides up, pin overlay to bodice front, matching centers and notches, having raw edges even. Baste.



**21.** Stitch bodice backs to bodice front at shoulders and sides, keeping side edges of lace free.

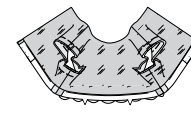


### VIEW C, D:

**22.** Stitch bodice lining sections together at shoulders and sides. Turn in seam allowance on lower edge of lining. Press. Trim pressed seam allowance to 3/8" (1cm). With right sides together, pin lining to bodice, matching centers. Stitch neck and back edges. Cut corners diagonally. Grade seam allowances by cutting to graduated widths and interfacing close to stitching. Clip curves.

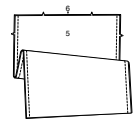


**23.** Turn lining to inside. Press. Baste armhole edges.



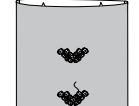
### SKIRT

**24.** Stitch **SKIRT FRONT** (5) to **SKIRT BACK** (6) at sides.



### VIEW A:

**25.** Center and pin appliques to skirt front, placing one applique 6" (15cm) below upper edge and remaining applique 6" (15cm) below the first, as shown. Hand-sew in place.



**26.** Pin lace edging to skirt, having lower edges even, turning under ends at center back, matching motifs, if possible. Stitch close to upper edge. Carefully trim fabric beneath lace, leaving a 1/4" (6mm) seam allowance.



**27.** **SLIPSTITCH** ends.



### VIEW B:

**28.** With right sides up, pin 3" (7.5cm) to 4" (10cm) wide pre-gathered lace to lower edge of skirt, having lower edges even, turning under ends at center back. Stitch close to upper edge. Carefully trim fabric beneath lace, leaving a 1/4" (6mm) seam allowance. Press seam allowance toward skirt, as shown.



**29.** **SLIPSTITCH** ends.

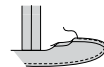


**30.** With right sides up, center and pin ribbon over upper edge of lace, turning under ends at center back. Stitch close to long edges of ribbon. **SLIPSTITCH** ends.



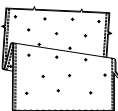
### VIEW C, D:

**31.** Make **NARROW HEM** at lower edge of skirt.





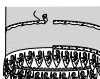
**32.** Stitch OVERSKIRT FRONT (5) to OVERSKIRT BACK (6) at sides in **DOUBLE-STITCHED** seams. Press seams toward back.

**VIEW D:**

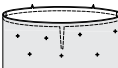
**33.** With right sides up, pin 1 1/2" (1.38cm) to 2 1/2" (6.3cm) wide lace to lower edge of overskirt, having lower edges even, turning under ends at center back. Stitch close to upper edge. Carefully trim fabric beneath lace, leaving a 1/4" (6mm) seam allowance. Press seam allowance toward skirt, as shown. **SLIPSTITCH** ends.



**34.** With right sides up, pin beaded ribbon slightly over upper edge of lace, turning under ends at center back. Stitch close to long edges of ribbon. **SLIPSTITCH** ends. With right sides up, pin straight edge of crochet lace along placement line, turning under ends at center back. Stitch close to upper edge. **SLIPSTITCH** ends.

**VIEW C, D:**

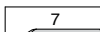
**35.** With right sides up, pin overskirt to skirt, matching centers and seams. Baste upper edge and along stitching line on back.

**ALL VIEWS:**

**36. REINFORCE** upper edge of skirt back along stitching line. Slash between stitching to lower end.



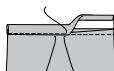
**37.** Turn in 1/4" (6mm) seam allowance on one long edge of **CONTINUOUS LAP** (7). Press.



**38.** Pin right side of continuous lap to wrong side of skirt, placing remaining 1/4" (6mm) seamline along stitching. Stitch.



**39.** Press seam toward continuous lap. Turn pressed edge of continuous lap to outside over seam. Stitch close to pressed edge.



**40.** On inside, bring lower edges of lap together. Stitch diagonally across lower edges, as shown. Turn left edge of continuous lap to inside as shown. Baste across upper edge.



**41. GATHER** upper edge of skirt, ending at lap seam on right back.

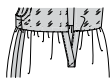


**42.** With right sides together, pin skirt to bodice, matching centers and seams. Adjust gathers; baste. Stitch, keeping lining free.

**VIEW B, C, D:** Be careful not to catch lace in stitching.



**43.** Press seam allowances toward bodice. **SLIPSTITCH** pressed edge of lining over seam.

**SLEEVE A, B**

**44. GATHER** upper edge of **SLEEVE (8)** between notches. Stitch sleeve seam.



**45. GATHER** lower edge of sleeve.



**46.** Stitch ends of each **SLEEVE BAND (9)** section together.

**VIEW B:**

**47.** Cut a piece of lace 11 1/4" (28.5cm) long. Stitch ends together. **GATHER** upper straight edge.



**48.** With right sides together, pin lace to unnotched edge of sleeve band, matching seams. Adjust gathers; baste.

**VIEW A, B:**

**49.** For each sleeve, for facing, turn in seam allowances on notched edge of one sleeve band section. Press. Trim pressed seam allowance to 3/8" (1cm).



**50.** With right sides together, pin facing to sleeve band, matching seams. Stitch unnotched edge. Trim. Turn. Press.



**51.** With right sides together, pin sleeve band to sleeve, matching notches and seams. Adjust gathers; baste. Stitch, keeping pressed edge of facing free. Trim. Press seam toward sleeve band.



**52. SLIPSTITCH** pressed edge over seam.



**53.** With right sides together, pin sleeve into armhole, placing center dot at shoulder seam. Adjust gathers and ease. Baste. Stitch. Stitch again 1/4" (6mm) away in seam allowance. Trim close to stitching. Press seam allowances flat. Turn seam toward sleeve.

**SLEEVE C, D**

**54. GATHER** upper edge of sleeve between notches. Stitch sleeve seam in a **DOUBLE-STITCHED** seam. Press seam toward back.



**55. GATHER** lower edge of sleeve.



**56.** With right sides together, pin overlay (9) to two sleeve band sections. Baste. **NOTE:** When stitching, handle both layers as one. Overlay will not be shown in the following illustrations.



**57.** Stitch ends of each sleeve band section together. **NOTE:** Sleeve band sections without overlay will be used as facing.

**VIEW D:**

**58.** With right sides together, pin lace to unnotched edge of sleeve band, turning ends to outside at seam. Baste. **SLIPSTITCH** ends.

**VIEW C, D:**

**59.** Turn in seam allowances on notched edge of sleeve band **FACING**. Press. Trim pressed seam allowance to 3/8" (1cm).



**60.** With right sides together, pin facing to sleeve band, matching seams. Stitch unnotched edge. Trim. Turn. Press.



**61.** With right sides together, pin sleeve band to sleeve, matching notches and seams. Adjust gathers; baste. Stitch, keeping pressed edge of facing free. Trim. Press seam toward sleeve band.



**62. SLIPSTITCH** pressed edge over seam.

**VIEW D:**

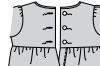
**63.** On outside, pin beaded ribbon to lower edge of sleeve band, as shown, turning under ends at seam. Stitch close to long edges. **SLIPSTITCH** ends.

**VIEW C, D:**

**64.** With right sides together, pin sleeve into armhole, placing large dot at shoulder seam. Adjust gathers and ease. Baste. Stitch. Stitch again 1/4" (6mm) away in seam allowance. Trim close to stitching. Press seam allowances flat. Turn seam toward sleeve.

**FINISHING**

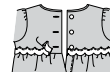
**65.** Make buttonholes in left back at markings. Lap opening edges, as shown, matching centers. Using buttonholes as guides, make button markings on right back. Sew buttons at markings.

**VIEW A:**

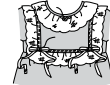
**66.** Center and pin applique to bodice front, slightly below neck edge, as shown. Hand-sew in place.



**67.** With right sides up, center and pin lace edging over waist seam, turning under ends at back opening edges. Hand-sew in place.

**VIEW B:**

**68.** Cut two pieces of ribbon, each 54" (137cm) long. Tie each ribbon into a bow measuring 2" (5cm) wide. Cut ends of ribbon diagonally. Sew bows to corners of ribbon on bodice front. Sew a rosette to bodice front, centering rosette slightly below neck binding, as shown.



**69.** Sew a rosette to each sleeve band at small dot.



**70.** Sew remaining rosettes to lower edge of skirt, over ribbon, spacing rosettes evenly.

**ROMPER E, F**

**NOTE:** Illustrated for View E, unless otherwise indicated.

**BODICE****VIEW E:**

**1.** With right sides together, pin **VEST FRONT (11)** to vest front **LINING (11)**, matching notches. Stitch neck, front and lower edges in a 3/8" (1cm) seam. Trim.



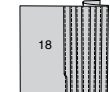
**2.** Turn. Press. Baste raw edges. With right sides up, lap left vest front over right, matching centers and dots. Sew buttons to vest front at small dots, through all thicknesses, as shown.



**3.** With right sides up, pin vest to bodice front (3), matching notches. Baste raw edges together.

**VIEW F:**

**4.** To make tucks in **BODICE FRONT (18)**, with wrong sides together, fold along each solid line. Stitch 1/8" (3mm) from folds. Press tucks toward away from center.



**5.** Pin ribbon in between tucks. Stitch close to long edges of ribbon.



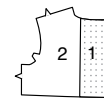
**6.** With right sides together, fold bodice in half along center front. Pin **GUIDE (3)** to bodice, centering between upper and lower edges, matching centers. Cut out.



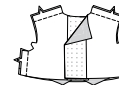
**7.** Sew buttons to small dots on bodice front.

**VIEW E, F:**

**8.** Pin bodice back interfacing (1) to wrong side of each bodice back (2) section. Fuse, following manufacturer's instructions.



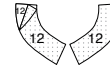
**9.** Stitch bodice backs to bodice front at shoulders and sides.



**10. STAYSTITCH** neck edge.

**COLLAR AND LINING**

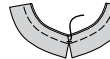
**11.** Pin interfacing (12) to wrong side of each matching **COLLAR (12)** section. Fuse, following manufacturer's instructions.



**12.** For each side, with right sides together, pin one interfaced collar section to one uninterfaced collar section. Stitch, leaving neck edge open. Trim.



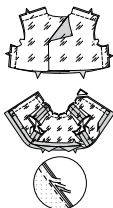
**13.** Turn. Press. Baste raw edges. Tack front edges together 5/8" (1.5cm) from neck edge.



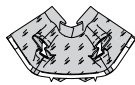
**14.** Pin collar to neck edge, interfaced side down, placing small dots at shoulder seams. Baste, clipping neck edge where necessary.



15. Stitch bodice back lining sections to bodice front lining at shoulders and sides. Turn in seam allowance on lower edge of lining. Press. Trim pressed seam allowance to 3/8" (1cm). With right sides together, pin lining to bodice, matching centers. Stitch neck and back edges. Cut corners diagonally. Grade seam allowances by cutting to graduated widths and interfacing close to stitching. Clip curves.



16. Turn lining to inside. Press. Baste armhole edges.



### SLEEVE

17. Stitch SLEEVE (13) seam.



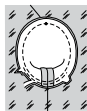
18. Turn up 1" (2.5cm) hem on lower edge of sleeve. Press.



19. To form tuck, turn lower edge to inside along foldline, encasing raw edge of hem. Stitch along dotted line. Press hem downward, pressing tuck upward.

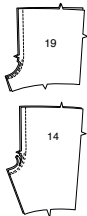


20. With right sides together, pin sleeve into armhole, placing large dot at shoulder seam. Baste. Stitch. Stitch again 1/4" (6mm) away in seam allowance. Trim close to stitching. Press seam allowances flat. Turn seam toward sleeve.

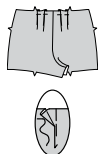


### PANTS OR SHORTS

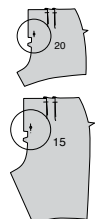
21. Stitch center seam in PANTS FRONT (14) or SHORTS FRONT (19). Stitch again 1/4" (6mm) away in seam allowance along curve, as shown. Trim close to second stitching.



22. To make pleats, on outside, bring dotted line to solid line in direction of arrows. Baste across pleats.



23. REINFORCE PANTS BACK (15) or SHORTS BACK (20) through small dot. Make pleats on upper edge of back. Baste across pleats.



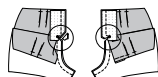
24. Stitch center seam from lower edge to small dot.



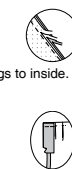
25. Pin back interfacing (16) to wrong side of each BACK FACING (16) section. Fuse, following manufacturer's instructions. FINISH outer and lower edge to small dot, as shown.



26. With right sides together, pin facing to backs, matching small dots. Stitch, ending stitching at small dot. Clip to small dot. Cut corners diagonally. Grade seam allowances by cutting to graduated widths and interfacing close to stitching.



27. Turn facings to inside. Press. Baste upper edges.



28. Lap left back over right, matching centers. Pin. Stitch across lower extension from finished edge to small dot.



29. On inside, hand-sew facing edges together below small dot.



### FINISHING

30. Open out on folded edge of bias tape and cut along crease.



31. With right sides together, pin cut edge to inner leg edges, having ends of tape even with raw edges. Stitch in a 1/4" (6mm) seam.



32. Turn tapes to inside. Press. Stitch close to inner edge.



33. Stitch front to back at sides.



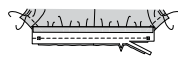
34. GATHER lower edge between tape stitching.



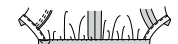
35. Turn in seam allowance on unnotched edge of each LEG BAND (17) or (21). Press. Trim pressed seam allowance to 3/8" (1cm).



36. With right sides together, pin band to lower edge, matching notches, and squares. Adjust gathers; baste. Stitch. Trim. With right sides together, fold band along foldline. Stitch ends. Cut corners diagonally. Grade seam allowances.



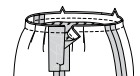
37. Turn right side out. Press. SLIPSTITCH pressed edge over seam.



38. On inside, apply ball sections of snaps to front at small dots, following manufacturer's instructions. On outside, apply socket sections of snaps to back at small dots.



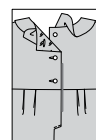
39. With right sides together, pin pants or shorts to bodice, matching centers and seams. Baste. Stitch, keeping lining free.



40. Press seam allowances toward bodice. SLIPSTITCH pressed edge of lining over seam.



41. Make buttonholes in left back at markings. Lap opening edges, as shown, matching centers. Using buttonholes as guides, make button markings on right back. Sew buttons at markings.



42. Tie 1/2" (1.3cm) wide ribbon into a bow. Cut ends of ribbon even with loops. Tack bow to bodice front centering between collar edges, as shown.



### BONNET A, B, C, D, E, F

NOTE: Under each sub-heading, the first View will be illustrated, unless otherwise indicated

#### BONNET AND BACK

##### VIEW B:

1. Cut a piece lace 25" (63.3cm) long. Make NARROW HEM on ends. GATHER upper edge.

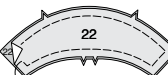


2. With right sides together, pin lace to front edge of BONNET (22), between small circles. Adjust gathers; baste.



##### VIEWS C, D:

3. With right sides together, pin overlay (22) and (23) to BONNET (22) and BACK (23), having raw edges even. Baste. NOTE: When stitching, handle both layers as one. Overlay will not be shown in the following illustrations.



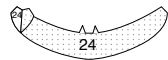
##### VIEW C:

4. With right sides together, pin lace to front edge of bonnet, having bound edge of lace slightly over the 5/8" (1.5cm) seam allowance, turning under ends at small circles. Baste.

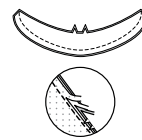


##### VIEWS E, F:

5. Pin interfacing (24) to wrong side of BRIM (24). Fuse, following manufacturer's instructions.



6. With right sides together, pin brim sections together, matching notches. Stitch unnotched edge. Grade seam allowances by cutting to graduated widths and interfacing close to stitching. Clip curves.



7. Turn. Press. Baste raw edges.

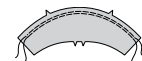


8. On outside, pin brim to front edge of bonnet, between small circles. Baste.



##### ALL VIEWS:

9. GATHER back edge of bonnet.



10. With right sides together, pin bonnet to outer edge of back, matching notches. Adjust gathers; baste. Stitch.



11. GATHER back edge of bonnet lining (22).



12. With right sides together, pin bonnet lining to outer edge of back lining (23), matching notches. Adjust gathers; baste. Stitch, leaving an opening for turning. Turn seam allowances toward back.



13. With right sides together, pin lining to bonnet, matching seams. Stitch. Cut corners diagonally. Clip curves.



14. Turn right side out. Press. To form casing for elastic, stitch across back 3/8" (1cm) above lower edge, as shown.



15. Cut a piece of elastic 4 1/2" (30.5cm) long. Insert elastic through casing, extending ends 5/8" (1.5cm) past seams. Baste. Stitch across ends of casing, through all thicknesses, catching elastic in stitching. SLIPSTITCH opening.



### FINISHING

#### VIEW A:

16. With right sides up, pin lace to front edge of bonnet, having scalloped edge slightly over finished edge, turning under ends at lower edges. Hand-sew or machine-stitch in place. SLIPSTITCH ends.



#### VIEW B:

17. With right sides up, pin ribbon to bonnet, having one long edge even with front edge, turning under ends at lower edges. Stitch close to both long edges of ribbon. SLIPSTITCH ends.

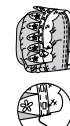


#### VIEW D:

18. With right sides up, pin lace to front edge of bonnet, having straight edge along front edge, turning under ends at lower edges. Baste. SLIPSTITCH ends. Pin lace trim to bonnet, having scalloped edge facing outward, placing straight edge slightly over front edge, turning under ends at lower edges. Baste. SLIPSTITCH ends.



19. With right sides up, pin beaded ribbon to front edge of bonnet, over lace, turning under ends at lower edges. Stitch close to both long edges of ribbon, through all thicknesses. SLIPSTITCH ends.



#### ALL VIEWS:

20. Turn under 1/2" (1.3cm) on ends of ribbon. On outside, pin ends to bonnet at small dots. Hand-sew in place.



#### VIEW B:

21. Sew a rosette over each end of ribbon.





# Congrats!

You've completed your sewing adventure

---

## SHARE YOUR LOOK



Post your pattern and tag us  
[@simplicity\\_creative\\_group](#) and [#simplicitypatterns](#)  
for a chance to be featured on our social media.

Look for more PDF patterns at [simplicity.com](https://www.simplicity.com)

Have a question or need help with your sewing project call us at  
1-800-782-0323

**McCall's**  
by **design**<sub>group</sub>

McCall's ©2024 a division of IG Design Group Americas Inc. • Atlanta, GA 30342 USA [www.thedesigngroup.com](http://www.thedesigngroup.com) • All Rights Reserved. [www.mccall.com](http://www.mccall.com) • Made in the U.S.A. Fabriqué aux États-Unis.

To be used for individual private home use only and not for commercial or manufacturing purposes. • A usage privé seulement et non à des fins commerciales ou de production en série. • Para uso privado solamente, no se puede utilizar con propósitos de comercialización o de producción en serie.