



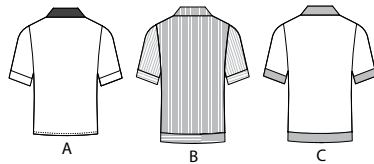
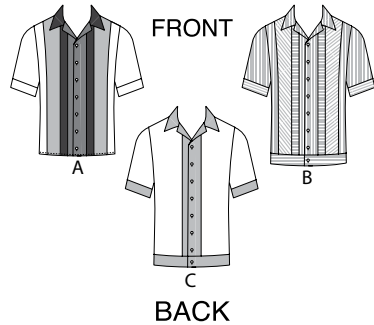
M8459

Page 1 of 3

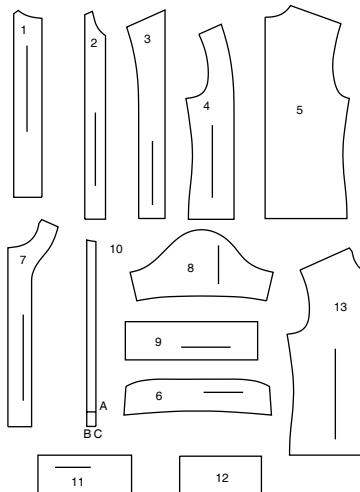
McCall's®

English

1-800-782-0323

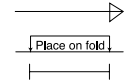


## 13 PATTERN PIECES



- 1 FRONT - A,B,C  
2 MIDDLE FRONT1- A,B  
3 MIDRIFF FRONT 2-A,B  
4 SIDE FRONT - A,B  
5 BACK - A,B,C  
6 COLLAR - A,B,C  
7 FRONT FACING - A,B,C
- 8 SLEEVE - A,B,C  
9 SLEEVE BAND - A,B,C  
10 BUTTONHOLE GUIDE - A,B,C  
11 FRONT BAND - B,C  
12 BACK BAND - B,C  
13 SIDE FRONT - C

## PATTERN MARKINGS

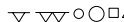


**GRAINLINE:** Place on straight grain of fabric, parallel to selvage or fold.

**FOLDLINE:** Place line on fold of fabric.

**BUTTONHOLE MARKING:** Indicates exact length and placement of buttonholes.

**BUTTON MARKING:** Indicates button placement.



**NOTCHES AND SYMBOLS:** For matching seams and construction details.

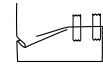
Indicates the Bustline, Waistline, Hip and/or Biceps. Measurements refer to circumference of Finished Garment (Body Measurement + Wearing Ease + Design Ease). Adjust pattern if necessary. The measurement excludes pleats, tucks, darts and seam allowances.

**SEAM ALLOWANCE:** 5/8" (1.5cm) included unless otherwise indicated, but not printed on tissue.

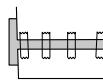
## ADJUST IF NECESSARY

Lengthen or Shorten at adjustment lines (==) or where indicated on pattern. If substantial length is added, you may need to purchase additional fabric.

**TO SHORTEN:** Crease along adjustment line. Make a fold half the amount needed. Tape in place.



**TO LENGTHEN:** Slash between adjustment lines. Spread amount as needed, keeping edges parallel. Tape over paper.



When Alteration lines are not on tissue, lengthen or shorten at lower edge.

## CUTTING AND MARKING

**SHRINK FABRIC** if not labeled pre-shrunk. Press.

**CIRCLE LAYOUT** for View, Size, Fabric Width.

Use **WITH NAP** layout for fabrics with one-way designs, nap, pile or surface shading. Because most knits have surface shading, a with nap layout is used.

For **DOUBLE THICKNESS (WITH FOLD)** - fold fabric with right sides together.

**\* DOUBLE THICKNESS (WITHOUT FOLD)** - For fabrics with nap, fold fabric crosswise, right sides together. Mark as shown. Cut along crosswise fold of fabric (A). Turn upper layer 180° so arrows go in same direction and place over lower layer, right sides together (B).

For **SINGLE THICKNESS** - place fabric right side up. (For Fur Pile fabrics, place pile side down.)

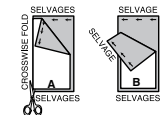
★ Cut other pieces first, allowing enough fabric to cut this piece. Open fabric. For "Cut 1" pieces, cut piece once on single layer of fabric with piece face up on right side of fabric.

Pattern may have cutting lines for several sizes. Select the proper cutting line or pattern pieces for your size.

Before **CUTTING** place all pieces on fabric according to layout. Pin. (**Layouts show approximate position of pattern pieces; position may vary according to your pattern size.**) Cut **ACCURATELY**, cutting notches outward.

Before removing pattern, **TRANSFER MARKINGS** and lines of construction to Wrong Side of fabric, using the Pin and Chalk Pencil method or Tracing Paper and Dressmaker Wheel. Markings needed on right side of fabric should be thread traced.

**NOTE:** Broken-line boxes (a! b! c!) in layouts represent pieces cut by measurements provided.



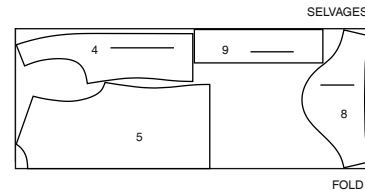
## CUTTING LAYOUTS

RIGHT SIDE OF PATTERN	WRONG SIDE OF PATTERN	RIGHT SIDE OF FABRIC	WRONG SIDE OF FABRIC
-----------------------	-----------------------	----------------------	----------------------

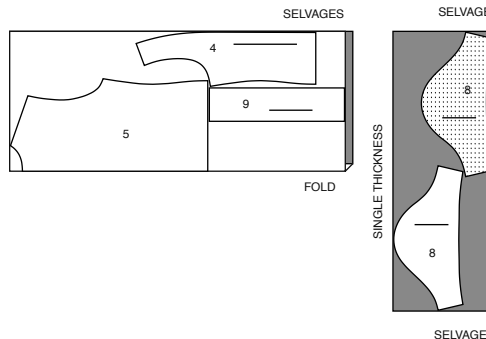
## SHIRT A

use pieces: 4 5 8 9

45" (115 cm)  
with nap  
sizes 34 36 38 40 42 44 46 48



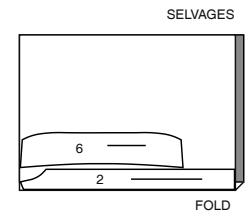
45" (115 cm)  
with nap  
sizes 50 52



## CONTRAST 2 (MIDDLE FRONT 1, COLLAR)

use pieces: 2 6

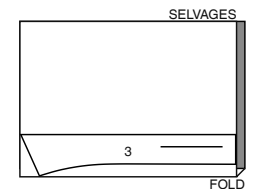
45" (115 cm)  
with nap  
all sizes



## CONTRAST 3 (MIDDLE FRONT 2)

use piece: 3

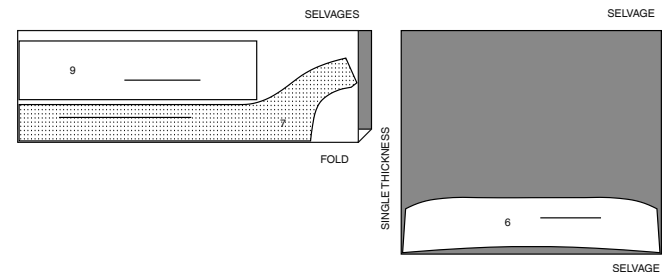
45" (115 cm)  
with nap  
all sizes



## INTERFACING A

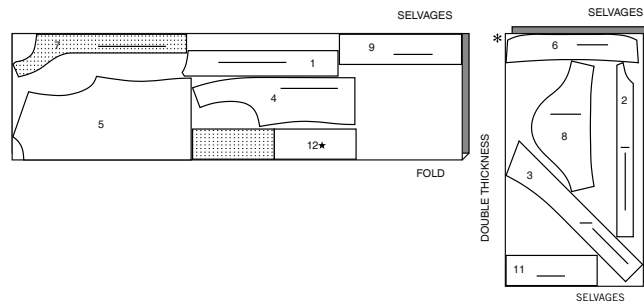
use pieces: 6 7 9

20" (51 cm)  
without nap  
all sizes

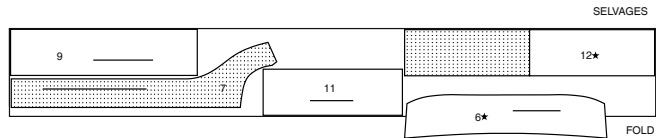


**SHIRT B**

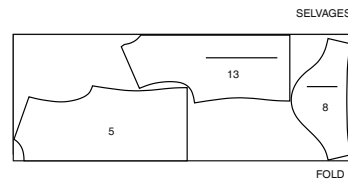
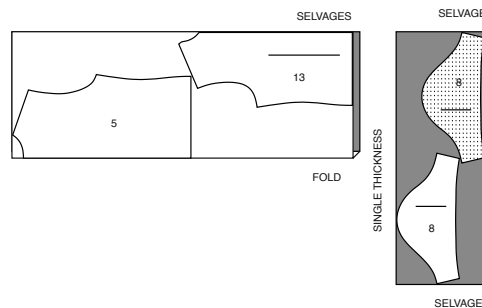
use pieces: 1 2 3 4 5 6 7 8 9 11 12

45" (115 cm)  
with nap  
all sizes**INTERFACING B, C**

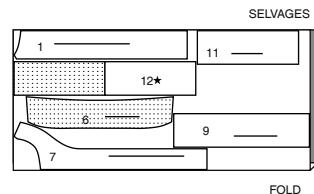
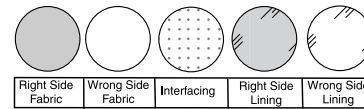
use pieces: 6 7 9 11 12

20" (51 cm)  
without nap  
all sizes**SHIRT C**

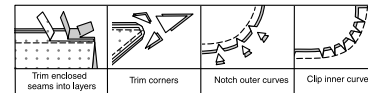
use pieces: 5 8 13

45" (115 cm)  
with nap  
sizes 34 36 38 40 42 44 4645" (115 cm)  
with nap  
sizes 48 50 52**CONTRAST (FRONT, COLLAR, FRONT FACING, SLEEVE BANDS, FRONT AND BACK BANDS)**

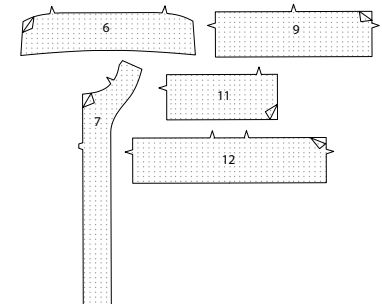
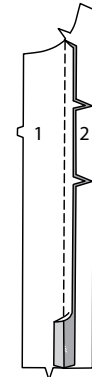
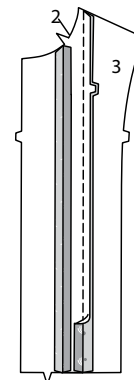
use pieces: 1 6 7 9 11 12

45" (115 cm)  
with nap  
all sizes**SEWING INFORMATION****FABRIC KEY****SEAM ALLOWANCES**

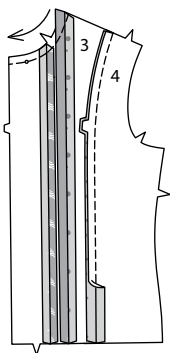
Use 1/4" (6mm) seam allowances unless otherwise indicated.

**PIN AND FIT**Pin or baste seams, **RIGHT SIDE TOGETHER**, matching notches. Fit garment before stitching major seams.**PRESS**

Press seam allowances flat; then open unless otherwise stated. Clip where necessary so they lie flat.

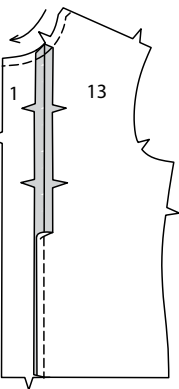
**GLOSSARY**Read **General Directions** on page 1 before you begin.~Sewing methods in **BOLD TYPE** have Sewing Tutorial Video available. Scan **QR CODE** to watch videos:**NARROW HEM** – see Hems: "sewing narrow hems" video.**SLEEVE** – see Armholes/Sleeves: "sewing a set in sleeve" video.**STAYSTITCH** – see Machine Stitches: "how to do stay stitching" video.**STITCH IN THE DITCH** – see Machine Stitches: "how to stitch in the ditch" video.**TRIM SEAM** – see Seams: "how to trim, clip and layer seams" video.**UNDERSTITCH** – see Machine Stitches: "how to understitch" video.**PATTERN PIECES WILL BE IDENTIFIED BY NUMBERS THE FIRST TIME THEY ARE USED.****STITCH 5/8" (1.5CM) SEAMS WITH RIGHT SIDES TOGETHER UNLESS OTHERWISE STATED.****SEWING TUTORIALS**Build your skills viewing short, easy-to-follow videos at [simplicity.com/sewingtutorials](http://simplicity.com/sewingtutorials)**SHIRT A, B, C****INTERFACING****1.** Pin interfacing to wrong side of **COLLAR (6)**, **FRONT FACING (7)**, and **SLEEVE BAND (9)**; and for views B, C, **FRONT BAND (11)** and **BACK BAND (12)**. Fuse interfacing in place following manufacturer's directions.**FRONT A, B****2.** Pin **FRONT (1)** to **MIDDLE FRONT 1 (2)**, matching notches. Stitch.**3.** Pin middle front 1 to **MIDDLE FRONT 2 (3)**, matching notches. Stitch.

4. Pin middle front 2 to SIDE FRONT (4), matching notches. Stitch. **STAYSTITCH** neck edge of front in direction of arrows.



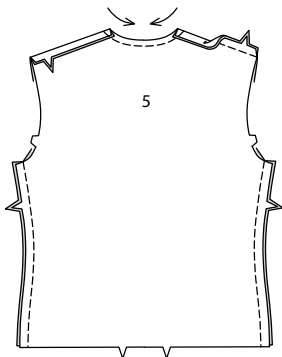
## FRONT C

5. Pin FRONT (1) to SIDE FRONT (13), matching notches. Stitch. **STAYSTITCH** neck edge of front in direction of arrows.

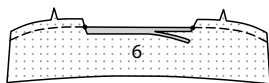


## CONTINUE AS FOLLOWS FOR ALL VIEWS

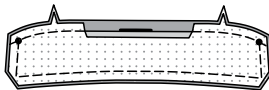
6. **STAYSTITCH** neck edge of BACK (5) in direction of arrows. Stitch front to back at shoulder and side edges. Press seams toward back.



7. Machine-stitch 5/8" (1.5cm) from notched edge of COLLAR (6). Clip notched edge of collar to stitching at small dots. Press under 5/8" (1.5cm) on raw edge between clips. Trim to 1/4" (6mm).



8. With right sides together, stitch facing to collar, leaving notched edge open. **TRIM SEAM.**

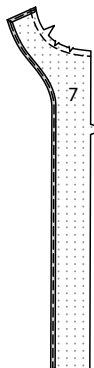


9. **UNDERSTITCH** the facing. Turn collar; press. Clip neck edge of garment to staystitching. On outside, pin collar (facing side) to neck edge, matching large dots, and placing small dots at shoulder seam. Baste both collar and facing sections to front neck edge as far as small dot.

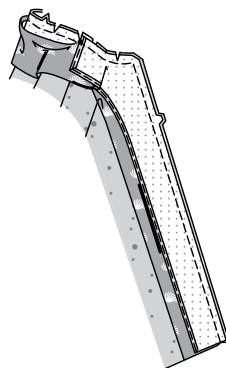
Baste only the collar facing section to remaining neck edge between small dots.



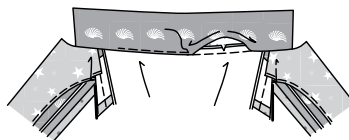
10. Machine-stitch 1/2" (1.3cm) from neck edge of FRONT FACING (7). To finish upper and long unnotched edge, stitch 1/4" (6mm) from edge, turn under along stitching and stitch OR zig-zag over the edge OR overlock/serge over the edge. Clip neck edge of facing to stitching.



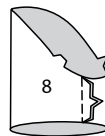
11. With right sides together, pin facing to front and neck edge. Baste. Clip neck edge through all thicknesses at small dot. Stitch front and neck edge as basted, being careful not to catch in free edge of collar. **TRIM SEAM.**



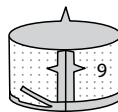
12. Turn facing to inside, turning back neck seam toward collar; press. Stitch pressed edge of collar over neck seam. To keep the facing in place, tack facing to shoulder seam allowances. **UNDERSTITCH** front edge of facing from lower edge to notch.



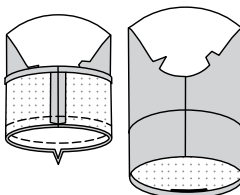
13. Pin underarm edges of SLEEVE (8), matching notches. Stitch.



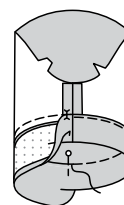
14. Stitch notched ends of SLEEVE BAND (9) together. Press under 1/2" (1.3cm) on unnotched edge; trim to 1/4" (6mm).



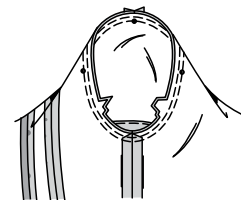
15. With right sides together, pin sleeve band to lower edge of sleeve, matching seams and notches. Stitch. **TRIM SEAM.** Press seam toward band.



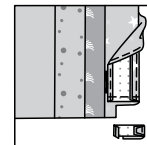
16. Fold band to inside along foldline. Pin pressed edge of band over seam, placing pins on outside. On outside, **STITCH IN THE DITCH** of the seam, catching in pressed edge of band on inside.



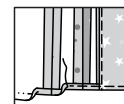
17. Stitch SLEEVE, by turning sleeve right side out, and holding garment wrong side out with armhole toward you. With right sides together, pin sleeve to armhole edge with center small dot at shoulder seam, matching underarm seams, notches and remaining small dots. Baste. Stitch. Stitch again 1/8" (3mm) from first stitching. Trim seam below notches close to stitching. Press only the seam allowance, shrinking out fullness.



18. **FOR VIEW A** – Mark hem. Turn facing to outside. Stitch across facing along hem marking. Trim facing close to stitching. Trim garment to within 5/8" (1.5cm) of inner edge of facing.

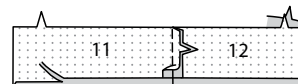


19. Turn facing to inside; press, pressing up hem along marking. **NARROW HEM**, stitching hem in place starting at opening edge.

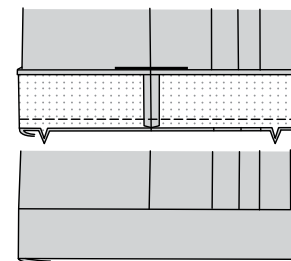


## LOWER BAND B, C

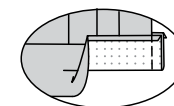
20. Stitch FRONT BAND (11) to BACK BAND (12) at side edges. Press under 1/2" (1.3cm) on unnotched edge; trim to 1/4" (6mm).



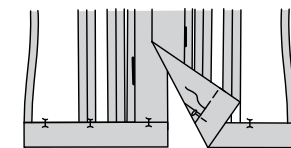
21. With right sides together, pin band to lower edge of shirt, matching seams and notches. (Band extends 5/8" (1.5cm) beyond opening edges.) Stitch. **TRIM SEAM.** Press seam toward band.



22. Turn pressed edge of band ends to outside along foldline. Stitch across ends. **TRIM SEAM.**

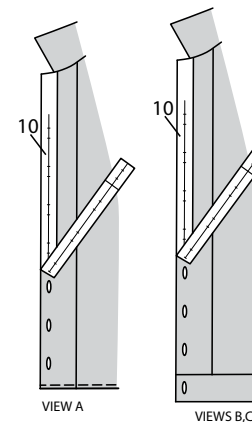


23. Turn band to inside along foldline, turning out corners. Pin pressed edge of band over seam, placing pins on outside. On outside, **STITCH IN THE DITCH** of the seam, catching in pressed edge of band on inside.



## FINISHING

24. To mark buttonholes in left front place BUTTONHOLE GUIDE (10) along finished edge of shirt, matching centers, as shown. Transfer buttonhole markings to shirt. Make buttonholes at markings. Lap left front over right, matching centers. Sew buttons under buttonholes.



VIEW A

VIEWS B,C



# Congrats!

You've completed your sewing adventure

---

## SHARE YOUR LOOK



Post your pattern and tag us  
[@simplicity\\_creative\\_group](#) and [#simplicitypatterns](#)  
for a chance to be featured on our social media.

Look for more PDF patterns at [simplicity.com](https://www.simplicity.com)

Have a question or need help with your sewing project call us at  
1-800-782-0323

**McCall's**  
by **design**<sub>group</sub>

McCall's ©2024 a division of IG Design Group Americas Inc. • Atlanta, GA 30342 USA [www.thedesigngroup.com](http://www.thedesigngroup.com) • All Rights Reserved. [www.mccall.com](http://www.mccall.com) • Made in the U.S.A. Fabriqué aux États-Unis.

To be used for individual private home use only and not for commercial or manufacturing purposes. • A usage privé seulement et non à des fins commerciales ou de production en série. • Para uso privado solamente, no se puede utilizar con propósitos de comercialización o de producción en serie.