

McCall's

M8458



Designed and printed in USA

Average

UNISEX PULL-ON SHORTS AND PANTS

Suggested Fabrics: Chambray, Cotton Blends, Lightweight Nylon, Ripstop, Twill. **Interfacing:** Lightweight Fusible.

Notions: A,B,C: 2¾ yds. (2.6m) of ½" (1.3cm) elastic, two ¾" (1cm) grommets, 2 yds. (1.9m) of ¾" (1cm) drawstring cord. **Also for B:** Two cord stoppers, two 7" (18cm) zippers, 1¾ yds. (1.6m) of elastic cord, four ¾" (1cm) grommets (for legs).

Sizes	XS (30-32)	S (34-36)	M (38-40)	L (42-44)	XL (46-48)	XXL (50-52)
European	30-32	34-36	38-40	42-44	46-48	50-52

BODY MEASUREMENTS: Select pattern size based on body measurements

	XS	S	M	L	XL	XXL	Ins.
Bust/ Chest	30-32	34-36	38-40	42-44	46-48	50-52	"
Waist	24-26	28-30	32-34	36-39	42-44	46-48	"
Hip	32-34	35-37	39-41	43-45	47-49	51-53	"

Shorts A	45**	17%	17%	2¼	2½	2¾	2¾	Yds.
	60**	1¾	1¾	1¾	1¾	1¾	1¾	"

Pants B	45**	27%	27%	3¾	3¾	3¾	3¾	Yds.
	60**	2½	2½	2½	2½	3	3	"

Pants C	45**	2½	2¾	2¾	2¾	2¾	2¾	Yds.
	60**	1½	2	2¼	2½	2½	2½	"

FINISHED GARMENT MEASUREMENTS (Includes Design and Wearing Ease)

A,B,C Hip	38	42	46	50	54	58	Ins.
Width, each leg							

Shorts A	24	25	26	27	28	29	Ins.
Pants B,C	22	23	24	25	26	27	"

Finished side length from waist							Ins.
Shorts A	21½	22	22½	23	23½	24	"
Pants B,C	41½	42	42½	43	43½	44	"

*with nap **without nap

Moins Facile

SHORT ET PANTALON À TAILLE ÉLASTIQUÉS UNISEXE

Tissu Conseillé: Chambray, Cottonnades, Nylon de poids léger, Nylon indéchirable, Twill. **Entoilage:** thermocollant léger.

Mercurie: A,B,C: 2.6m d'élastique de 1.3cm, 2 œillets de 1cm, 1.9m cordon de coulissede 1cm. **Aussi pour B:** 2 arrêts de cordon, 2 fermetures à glissière de 18cm (un à ajuster à 15cm), 1.6m de cordon élastique, 4 œillets de 1cm (pour les jambes).

Tailles	TP/XS (30-32)	P/S (34-36)	M (38-40)	G/L (42-44)	TG/XL (46-48)	TTG/XXL (50-52)
Françaises	32-34	36-38	40-42	44-46	48-50	52-54
Européen	30-32	34-36	38-40	42-44	46-48	50-52

MESURES DU CORPS: Choisissez la taille du patron basée sur les mesures du corps

	TP/XS	P/S	M	G/L	TG/XL	TTG/XXL
Poitrine	76-81	87-92	97-102	107-112	117-122	127-132
Taille	61-66	71-76	81-87	92-99	107-112	117-122
Hanches	81-87	89-94	99-104	109-115	119-124	128-135

Short A	115cm*	1.7	1.7	2.1	2.1	2.2	2.2	m
	150cm*	1.6	1.6	1.6	1.6	1.6	1.7	"

Pantalon B	115cm*	2.6	2.6	3.4	3.4	3.4	3.4	m
	150cm*	2.3	2.3	2.3	2.4	2.6	2.7	"

Pantalon C	115cm*	2.3	2.5	2.5	2.6	2.6	2.6	m
	150cm*	1.5	1.8	2.1	2.3	2.4	2.6	"

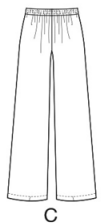
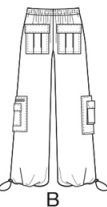
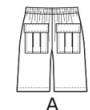
MESURES DES VÊTEMENTS FINI (Motif et aisance de port compris)

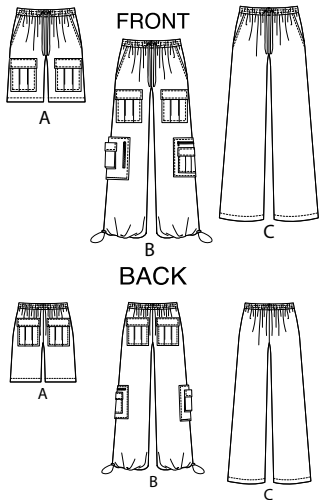
A,B,C Hanches	97	107	117	127	137	147	cm
Largeur, chaque jambe							

Short A	61	64	66	69	71	74	cm
Pantalon B,C	56	58	61	64	66	69	"

Longueur finie – côté, taille à l'ourlet							cm
Short A	55	56	57	58	60	61	"
Pantalon B,C	105	107	108	109	110	112	"

*avec sens **sans sens





PATTERN MARKINGS

GRAINLINE: Place on straight grain of fabric, parallel to selvage or fold.

FOLDLINE: Place line on fold of fabric.

BUTTONHOLE MARKING: Indicates exact length and placement of buttonholes.

BUTTON MARKING: Indicates button placement.

NOTCHES AND SYMBOLS: For matching seams and construction details.

Indicates the Bustline, Waistline, Hip and/or Biceps. Measurements refer to circumference of Finished Garment (Body Measurement + Wearing Ease + Design Ease). Adjust pattern if necessary. The measurement excludes pleats, tucks, darts and seam allowances.

SEAM ALLOWANCE: 5/8" (1.5cm) included unless otherwise indicated, but not printed on tissue.

ADJUST IF NECESSARY

Lengthen or Shorten at adjustment lines (==) or where indicated on pattern. If substantial length is added, you may need to purchase additional fabric.

TO SHORTEN: Crease along adjustment line. Make a fold half the amount needed. Tape in place.

TO LENGTHEN: Slash between adjustment lines. Spread amount as needed, keeping edges parallel. Tape over paper.

When Alteration lines are not on tissue, lengthen or shorten at lower edge.

CUTTING AND MARKING

SHRINK FABRIC if not labeled pre-shrunk. Press.

CIRCLE LAYOUT for View, Size, Fabric Width.

Use **WITH NAP** layout for fabrics with one-way designs, nap, pile or surface shading. Because most knits have surface shading, a with nap layout is used.

For **DOUBLE THICKNESS (WITH FOLD)** - fold fabric with right sides together.

*** DOUBLE THICKNESS (WITHOUT FOLD)** - For fabrics with nap, fold fabric crosswise, right sides together. Mark as shown. Cut along crosswise fold of fabric (A). Turn upper layer 180° so arrows go in same direction and place over lower layer, right sides together (B).

For **SINGLE THICKNESS** - place fabric right side up. (For Fur Pile fabrics, place pile side down.)

★ Cut other pieces first, allowing enough fabric to cut this piece. Open fabric. For "Cut 1" pieces, cut piece once on single layer of fabric with piece face up on right side of fabric.

Pattern may have cutting lines for several sizes. Select the proper cutting line or pattern pieces for your size.

Before **CUTTING** place all pieces on fabric according to layout. Pin. (Layouts show approximate position of pattern pieces; position may vary according to your pattern size.) Cut **ACCURATELY**, cutting notches outward.

Before removing pattern, **TRANSFER MARKINGS** and lines of construction to Wrong Side of fabric, using the Pin and Chalk Pencil method or Tracing Paper and Dressmaker Wheel. Markings needed on right side of fabric should be thread traced.

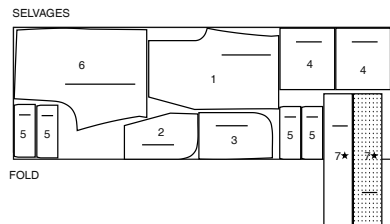
NOTE: Broken-line boxes (a! b! c!) in layouts represent pieces cut by measurements provided.

CUTTING LAYOUTS

RIGHT SIDE OF PATTERN	WRONG SIDE OF PATTERN	RIGHT SIDE OF FABRIC	WRONG SIDE OF FABRIC
-----------------------	-----------------------	----------------------	----------------------

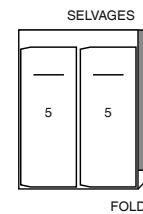
SHORTS A
use pieces: 1 2 3 4 5 6 7

45" (115 cm)
with nap
sizes XS S

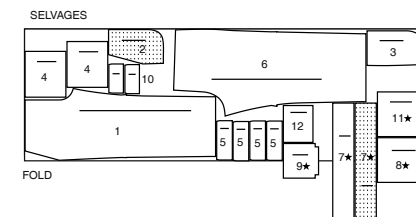


INTERFACING A (Flaps)
use piece: 5

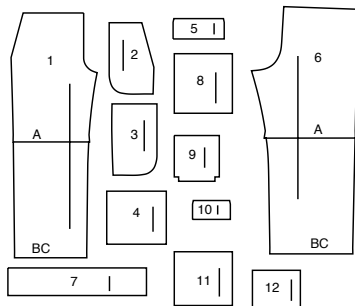
20" (51 cm)
without nap
all sizes



60" (150 cm)
with nap
sizes XS S M L

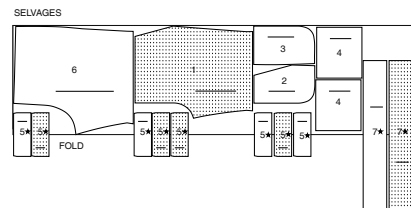


12 PATTERN PIECES



- 1 FRONT - A,B,C
- 2 POCKET FACING - A,B,C
- 3 SIDE FRONT AND POCKET - A,B,C
- 4 POCKET - A,B
- 5 FLAP - A,B
- 6 BACK - A,B,C
- 7 CASING - A,B,C
- 8 RIGHT SIDE PATCH - B
- 9 RIGHT SIDE POCKET - B
- 10 SIDE FLAP - B
- 11 LEFT SIDE PATCH - B
- 12 LEFT SIDE POCKET - B

45" (115 cm)
with nap
sizes M L XL XXL



PANTS B
use pieces: 1 2 3 4 5 6 7 8 9 10 11 12

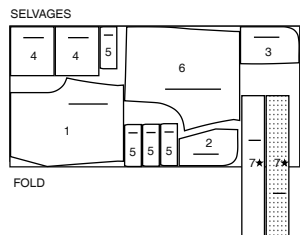
45" (115 cm)
with nap
sizes XS S



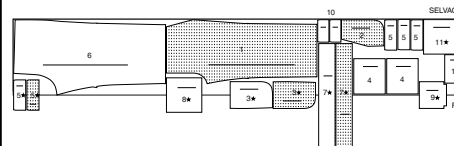
60" (150 cm)
with nap
sizes XL XXL



60" (150 cm)
with nap
all sizes

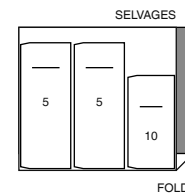


45" (115 cm)
with nap
sizes M L XL XXL



INTERFACING B (Flaps)
use pieces: 5 10

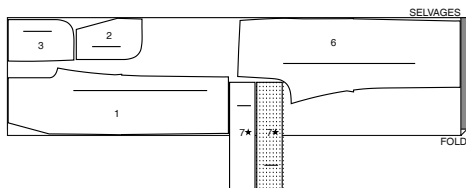
20" (51 cm)
without nap
all sizes



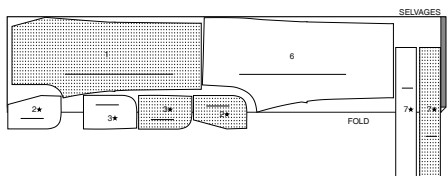
PANTS C

use pieces: 1 2 3 6 7

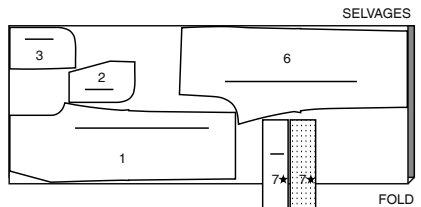
45" (115 cm)
with nap
sizes XS



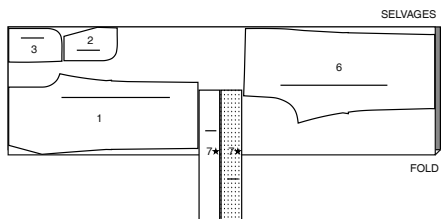
45" (115 cm)
with nap
sizes S M L XL XXL



60" (150 cm)
with nap
sizes XS S M

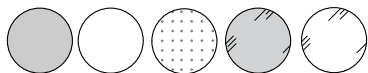


60" (150 cm)
with nap
sizes L XL XXL



SEWING INFORMATION

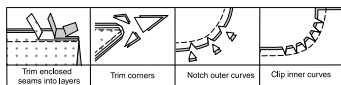
FABRIC KEY



Right Side Fabric	Wrong Side Fabric	Interfacing	Right Side Lining	Wrong Side Lining
-------------------	-------------------	-------------	-------------------	-------------------

SEAM ALLOWANCES

Use 1/4" (6mm) seam allowances unless otherwise indicated.



PIN AND FIT

Pin or baste seams, RIGHT SIDE TOGETHER, matching notches. Fit garment before stitching major seams.

PRESS

Press seam allowances flat; then open unless otherwise stated. Clip where necessary so they lie flat.

GLOSSARY

Sewing methods in **BOLD TYPE** have Sewing Tutorial Video available. Scan **QR CODE** to watch videos:

Read **General Directions** on page 1 before you begin.

EDGESTITCH - see **how to edgestitch** video.

REINFORCE - see **how to reinforce** video.

TOPSTITCH - see **how to topstitch** video.

SLIPSTITCH - Slide needle through a folded edge, then pick up a thread of underneath fabric.

PATTERN PIECES WILL BE IDENTIFIED BY NUMBERS THE FIRST TIME THEY ARE USED.

STITCH SEAMS WITH RIGHT SIDES TOGETHER UNLESS OTHERWISE STATED.

SEWING TUTORIALS



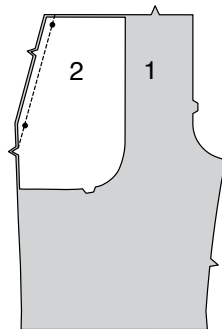
Build your skills viewing short, easy-to-follow videos at [simplicity.com/sewingtutorials](https://www.simplicity.com/sewingtutorials)

SHORTS A, PANTS B, C

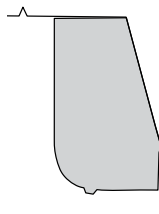
NOTE: Under each sub-heading, **View A** will be illustrated unless otherwise noted.

FRONT AND BACK

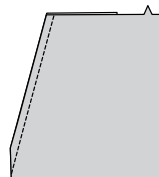
1. Stitch each **POCKET FACING** (2) section to each upper side edge of **FRONT** (1) sections. Trim.



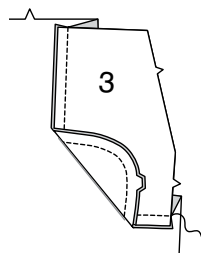
2. Turn pocket to inside. Press.



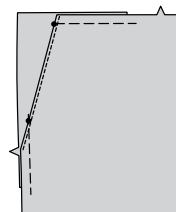
3. **TOPSTITCH** upper side edge of front.



4. Stitch one **SIDE FRONT AND POCKET** (3) section to each pocket at outer edge, keeping front free.



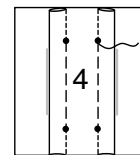
5. Baste upper and side edges.



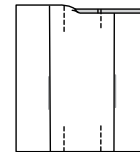
6. **VIEW A, B** - Construct four upper pocket sections as follows:

To form pleats in **POCKET** (4) sections, bring lines with small dots together. Stitch along broken lines from raw edge to small dots. Baste between small dots. Press seam away from center.

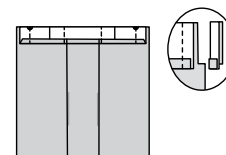
Remove basting.



7. Turn in 1/4" (6mm) on upper edge of each pocket. Press.

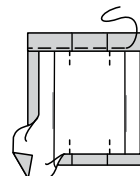


8. Turn upper edge to outside along foldline. Stitch ends. Trim.

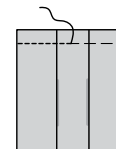


9. Turn upper edge of pocket to inside, turning in remaining seam allowances and diagonally folding corners. Press.

Baste close to inner pressed edge.

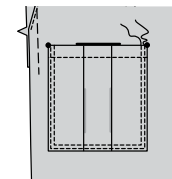


10. **TOPSTITCH** along basting.



11. Pin pocket to front, matching symbols. **EDGESTITCH** and **TOPSTITCH** side and lower edges, reinforcing upper ends.

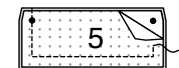
NOTE: Remaining pocket sections will be used for the back.



12. Construct four pocket flap sections as follows:

Apply **INTERFACING** to wrong side of **FLAP** (5) facing sections. Fuse in place following manufacturer's directions.

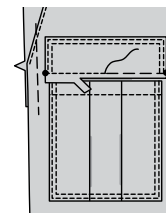
For each flap, with right sides together, stitch facing to flap matching markings. Stitch along outer edge leaving edge with small dots open. Trim seam.



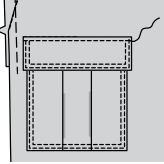
13. Turn flap right side out. Press. Baste raw edges together. **EDGESTITCH** and **TOPSTITCH** finished edges of flap.



14. Pin flap (interfaced side up) to front, placing seamline along flap line. Baste. Stitch along seamline between small dots. Trim flap seam allowance to a scant 1/4" (6mm), being careful not to cut garment.

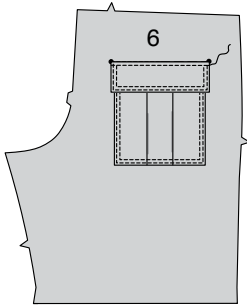


15. Turn flap down. Press. **TOPSTITCH** upper edge of flap, encasing trimmed edge.

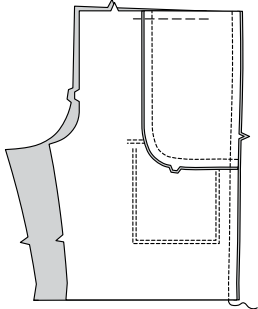


16. On outside, **EDGESTITCH** and **TOPSTITCH** remaining pocket sections to BACK (6) in same manner as for front.

Apply remaining flaps to back, in same manner.

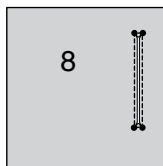


17. **ALL VIEWS**- With right sides together, stitch front to back at side seams.



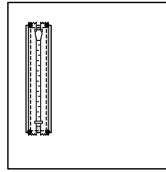
LOWER POCKETS AND PATCHES B

18. **REINFORCE RIGHT SIDE PATCH (8)** along stitching lines. Cut along slash line, clipping to inner corners at small dots.

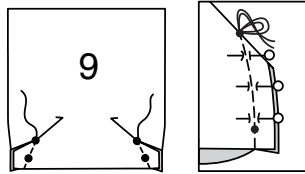


19. Press under seam allowances to inside along stitching.

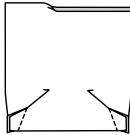
On inside, pin closed zipper under opening edges, having top and bottom stop at opening edges. **EDGESTITCH** zipper in place, using an adjustable zipper foot.



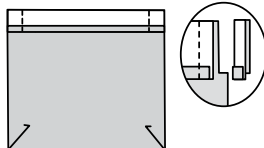
20. To make dart seam in **RIGHT SIDE POCKET (9)**, with **RIGHT** sides together, bring broken lines together, matching small dots. Stitch along broken line from raw edge to point. Press.



21. Turn in 1/4" (6mm) on upper edge of pocket. Press.

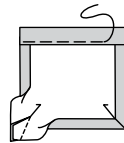


22. Turn upper edge to outside along foldline. Stitch ends. Trim.

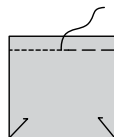


23. Turn upper edge of pocket to inside, turning in remaining seam allowances. Press.

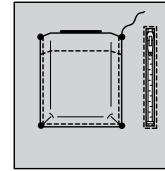
Baste close to inner pressed edge.



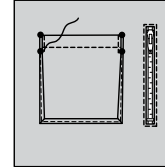
24. **TOPSTITCH** along basting.



25. On outside, pin pocket to right patch matching symbols. **EDGESTITCH** pocket in place.

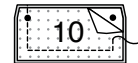


26. Press outer edges of pocket along fold line, bringing upper edges of pocket together matching large and small dots. Press. **EDGESTITCH** upper edge of pocket in place ending at small dots.



27. Apply **INTERFACING** to wrong side of **FLAP (10)** facing sections. Fuse in place following manufacturer's directions.

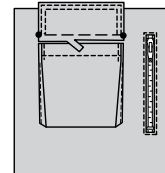
For each flap, with right sides together, stitch facing to flap matching markings. Stitch along outer edge leaving edge with small dots open. Trim seam.



28. Turn flap right side out. Press. Baste raw edges together. **EDGESTITCH** and **TOPSTITCH** finished edges of flap.

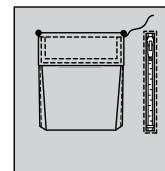


29. Pin flap (interfaced side up) to right patch, placing seamline along flap line. Baste. Stitch along seamline between small dots. Trim flap seam allowance to a scant 1/4" (6mm), being careful not to cut garment.



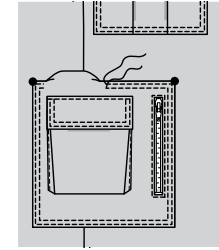
30. Turn flap down. Press. **TOPSTITCH** upper edge of flap, encasing trimmed edge.

NOTE: remaining flap will be used for left side.

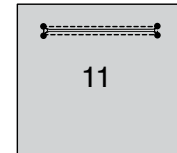


31. Press under seam allowance on raw edges of right patch to inside.

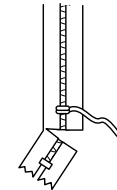
On outside, pin patch to right front and back (over side seams), matching large dots. **EDGESTITCH** and **TOPSTITCH** patch in place.



32. **REINFORCE LEFT SIDE PATCH (11)** along stitching lines. Cut along slash line, clipping to inner corners at small dots.

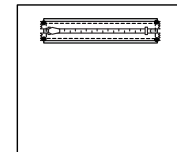


33. **NOTE:** It is necessary to shorten zipper. Measure the opening between small dots. To make new zipper stop, mark placement of new zipper stop. Whipstitch across teeth at marking. Cut zipper 3/4"(2cm) below the new stop.

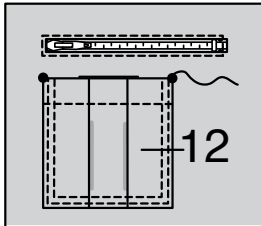


34. Press under seam allowances to inside along stitching.

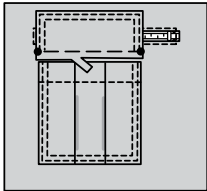
On inside, pin closed zipper under opening edges, having top and bottom stop at opening edges. **EDGESTITCH** zipper in place, using an adjustable zipper foot.



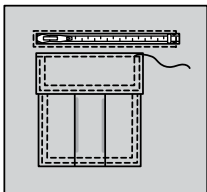
35. Construct LEFT SIDE POCKET (12) in same manner as POCKET (4). See steps 6 through 10. On outside, pin pocket to left patch matching markings. **EDGESTITCH** and **TOPSTITCH** pocket in place.



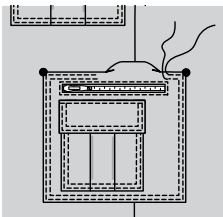
36. Pin remaining flap (interfaced side up) to left patch, placing seamline along flap line. Baste. Stitch along seamline between small dots. Trim flap seam allowance to a scant 1/4" (6mm), being careful not to cut garment.



37. Turn flap down. Press. **TOPSTITCH** upper edge of flap, encasing trimmed edge.

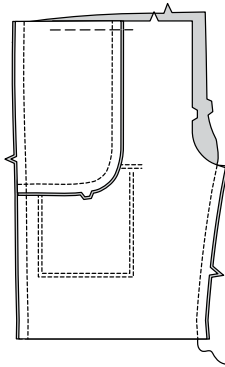


38. Press under seam allowance on raw edges of left patch to inside. On outside, pin patch to left front and back (over side seams), matching large dots. **EDGESTITCH** and **TOPSTITCH** patch in place.

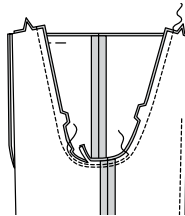


INNER LEG AND CASING A, B

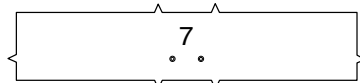
39. Stitch front and back together at inner leg, stretching back to fit front between upper edge and notch.



40. For crotch seam, turn one pant leg right side out; slip inside remaining pant leg. Stitch. Stitch again 1/4" (6mm) away in seam allowance along curve, as shown. Trim close to second stitching.



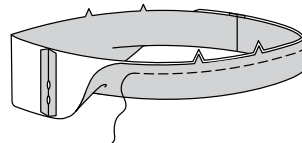
41. Apply grommets to front CASING (7) at markings, following manufacturer's directions.



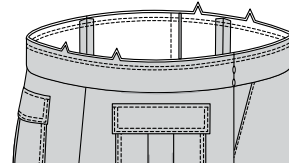
42. With right sides together, stitch side seams of casing sections, leaving openings' in left side seam between small dots, as shown. Back-stitch at small dots to reinforce seam.



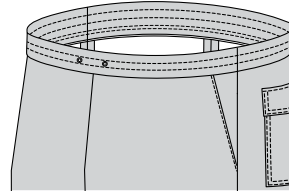
43. Fold casing in half, along fold line, with wrong sides together, having raw edges even. Baste raw edges together.



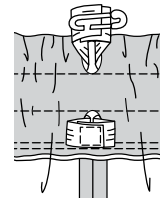
44. The side with the opening is the underside of the casing. With the underside of casing facing you, pin casing to garment, matching centers and side seams. Stitch along seam line. Stitch again 1/4" (6mm) from first stitching within seam allowance. Trim close to second stitching.



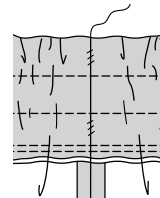
45. Press seam toward garment, pressing casing out. To form three separate casings, stitch along stitching lines, as shown.



46. Cut two pieces of elastic each to fit waist, plus 1" (2.5cm). Insert elastic through each opening in casing. Overlap ends and hold with safety pins. Try on garment and adjust to fit. Stitch ends of elastic together securely.

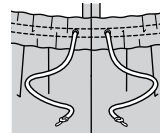


47. SLIPSTITCH opening edges of each casing together. Distribute fullness evenly. **TIP:** To secure elastic so it won't twist in wearing, stitch through all thicknesses of casing in the groove of each seam.

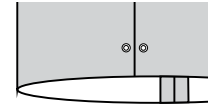


FINISHING

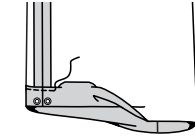
48. Attach a safety pin to one end of drawstring cord. Insert cording through openings in casing having ends extend evenly. Trim ends as desired. Knot ends.



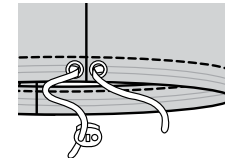
49. VIEW B- Apply grommets to lower edge of pants at markings, following manufacturer's directions.



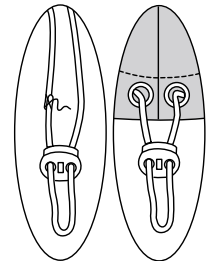
50. Press up 1" (2.5cm) on lower edge of pants. Press under 1/4" (6mm) on raw edge. Stitch close to inner pressed edge.



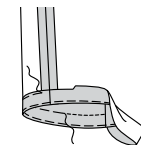
51. Cut elastic in half. Attach drawstring stopper near one end of elastic cord, following manufacturer's directions. Insert cord through gromet opening, as shown. Feed free end of cord through the opening and out the other end.



52. Slide stopper up cord, and thread end of cord through remaining hole of stopper, as shown. Trim ends as desired. Lap ends of cord 1/2" (1.3cm) and stitch together. Adjust stitched ends through opening, so that they are inside casing, leaving a loop on outside.



53. VIEW A, C- Turn up sleeve hem. Baste close to fold. Turn in 1/4" (6mm) on raw edge. Baste hem in place close to upper edge. Press. **TOPSTITCH** hem along upper basting.





Congrats!

You've completed your sewing adventure

**SHARE
YOUR** LOOK



Post your pattern and tag us
[@simplicity_creative_group](#) and [#simplicitypatterns](#)
for a chance to be featured on our social media.

Look for more PDF patterns at [simplicity.com](https://www.simplicity.com)

Have a question or need help with your sewing project call us at
1-800-782-0323

McCall's
by **design**_{group}

McCall's ©2024 a division of IG Design Group Americas Inc. • Atlanta, GA 30342 USA www.thedesigngroup.com • All Rights Reserved. www.mccall.com • Made in the U.S.A. Fabriqué aux États-Unis.

To be used for individual private home use only and not for commercial or manufacturing purposes. • A usage privé seulement et non à des fins commerciales ou de production en série. • Para uso privado solamente, no se puede utilizar con propósitos de comercialización o de producción en serie.