

McCall's

M8457



Designed and printed in USA

Easy

MISSES' LOOSE FIT JUMPSUIT AND SASH

Suggested Fabrics: Cotton Blends, Cotton Lawn, Gauze, Silksies. **Interfacing:** Lightweight Fusible.

Notions: A,B,C: ½" (1.3cm) buttons: Eleven for **A**, Nine for **B,C**. **Also for C:** One pkg. of ½" (1.3cm) single fold bias tape.

Sizes	S	M	L	XL	XXL
	(8-10)	(12-14)	(16-18)	(20-22)	(24-26)
European	34-36	38-40	42-44	46-48	50-52

BODY MEASUREMENTS: Select pattern size based on body measurements

Bust	31½-32½	34-36	38-40	42-44	46-48	Ins.
Waist	24-25	26½-28	30-32	34-37	39-41½	"
Hip-9" below waist	33½-34½	36-38	40-42	44-46	48-50	"
Back-neck to waist	15¾-16	16¼-16½	16¾-17	17¼-17½	17¾-18	"

Jumpsuit A	45** 3%	3%	4%	4%	4%	Yds.
	60** 3	3	3	3½	3½	"
Interfacing	20" ¾	¾	¾	¾	¾	"

Jumpsuit and Sash B	45** 5	5½	5¾	5¾	6½	Yds.
	60** 3¾	3¾	3¾	4	4	"
Interfacing B,C	20" ¾	¾	¾	1	1	Yd.

Jumpsuit C	45** 4	4¾	5¼	5¼	5½	Yds.
	60** 3	3¾	3¾	3¾	3¾	"

FINISHED GARMENT MEASUREMENTS (Includes Design and Wearing Ease)

A,B,C Bust	61½	65	69	73	77	Ins.
A,B,C Waist	53½	57	61	65	69	"
A,B,C Hip	52	55½	59½	63½	67½	"
Width, each leg						
Jumpsuit A,B,C	35	37	39	41	43	Ins.
Finished back length from base of neck						
Jumpsuit A,B,C	53	53½	54	54½	55	Ins.

*with nap **without nap

Facile

COMBINAISON AMPLE ET CEINTURE POUR JEUNES FEMMES

Tissus Conseillés: Cotonnades, Linon de coton, Gaze, Tissus soyeux. **Entoilage:** thermocollant léger.

Mercrierie: A,B,C: Boutons de 1.3cm: 11 pour **A**, 9 pour **B,C**. **Aussi pour C:** 1 paquet de ruban de biais simple de 1.3cm.

Tailles	P/S	M/M	G/L	TG/XL	TTG/XXL
Françaises	36-38	40-42	44-46	48-50	52-54
Européen	34-36	38-40	42-44	46-48	50-52

MESURES DU CORPS: Choisissez la taille du patron basée sur les mesures du corps

Poitrine	80-83	87-92	97-102	107-112	117-122	cm
Taille	61-64	67-71	76-81	87-94	99-105	"

Hanches (23cm au-dessous de la taille)

	85-88	92-97	102-107	112-117	122-127	cm
Dos du cou à la taille	40-40.5	41.5-42	42.5-43	44-44.5	45-45.5	"

Combinaison A	115cm* 3.3	3.5	4.2	4.2	4.3	m
	150cm* 2.7	2.7	2.7	2.9	2.9	"
Entoilage	51cm 0.6	0.6	0.7	0.7	0.8	"

Combinaison et ceinture B	115cm* 4.6	4.7	4.8	5.1	5.6	m
	150cm* 3.4	3.5	3.5	3.5	3.7	"
Entoilage B,C	51cm 0.8	0.8	0.8	0.8	0.9	m

Combinaison C	115cm* 3.7	3.8	4.8	4.8	5.0	m
	150cm* 2.7	2.9	2.9	3.0	3.0	"

MESURES DES VÊTEMENTS FINI (Motif et aisance de port compris)

A,B,C Poitrine	156	165	175	185	196	cm
A,B,C Taille	136	145	155	165	175	"
A,B,C Hanches	132	141	151	161	171	"
Largeur, chaque jambe						
Combinaison A,B,C	89	94	99	104	109	cm
Longueur finie – dos, votre nuque à l'ourlet						
Combinaison A,B,C	135	136	137	138	140	cm

*avec sens **sans sens



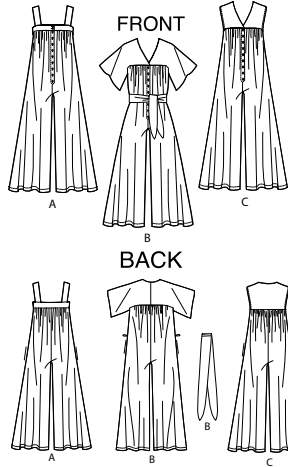
A



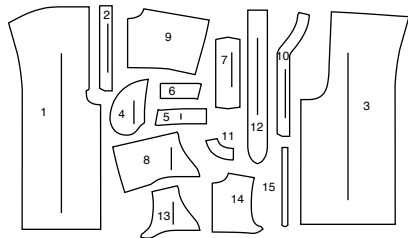
B



C

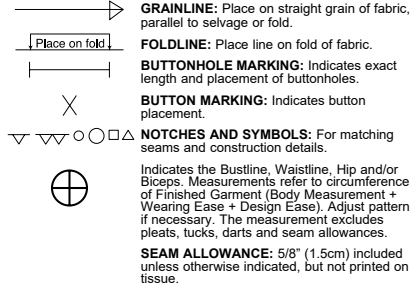


15 PATTERN PIECES

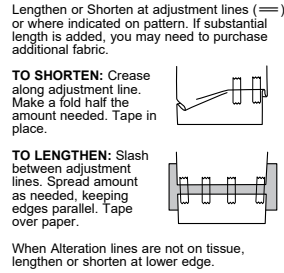


- 1 Front-A,B,C
- 2 Front Facing-A
- 3 Back-A,B,C
- 4 Pocket-A,B,C
- 5 Front Band-A
- 6 Back Band-A
- 7 Shoulder Strap-A
- 8 Yoke and Sleeve Front-B
- 9 Yoke and Sleeve Back-B
- 10 Front Facing-B,C
- 11 Back Facing-B,C
- 12 Sash-B
- 13 Yoke Front-C
- 14 Yoke Back-C
- 15 Buttonhole Guide-A,B,C

PATTERN MARKINGS



ADJUST IF NECESSARY



CUTTING AND MARKING

SHRINK FABRIC if not labeled pre-shrunk. Press.
CIRCLE LAYOUT for View, Size, Fabric Width.
 Use **WITH NAP** layout for fabrics with one-way designs, nap, pile or surface shading. Because most knits have surface shading, a with nap layout is used.
 For **DOUBLE THICKNESS (WITH FOLD)** - fold fabric with right sides together.
*** DOUBLE THICKNESS (WITHOUT FOLD)** - For fabrics with nap, fold fabric crosswise, right sides together. Mark as shown. Cut along crosswise fold of fabric (A). Turn upper layer 180° so arrows go in same direction and place over lower layer, right sides together (B).
 For **SINGLE THICKNESS** - place fabric right side up. (For Fur Pile fabrics, place pile side down.)

★ Cut other pieces first, allowing enough fabric to cut this piece. Open fabric. For "Cut 1" pieces, cut piece once on single layer of fabric with piece face up on right side of fabric.
 Pattern may have cutting lines for several sizes. Before **CUTTING** place all pieces on fabric according to layout. Pin. (Layouts show approximate position of pattern pieces; position may vary according to your pattern size.) Cut **ACCURATELY**, cutting notches outward.
 Before removing pattern, **TRANSFER MARKINGS** and lines of construction to Wrong Side of fabric, using the Pin and Chalk Pencil method or Tracing Paper and Dressmaker Wheel. Markings needed on right side of fabric should be thread traced.
NOTE: Broken-line boxes (a! b! c!) in layouts represent pieces cut by measurements provided.

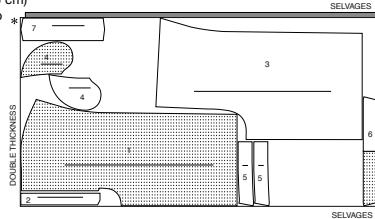
CUTTING LAYOUTS

RIGHT SIDE OF PATTERN	WRONG SIDE OF PATTERN	RIGHT SIDE OF FABRIC	WRONG SIDE OF FABRIC
-----------------------	-----------------------	----------------------	----------------------

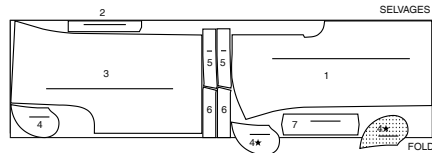
JUMPSUIT A

use pieces: 1 2 3 4 5 6 7

45" (115 cm)
with nap
all sizes



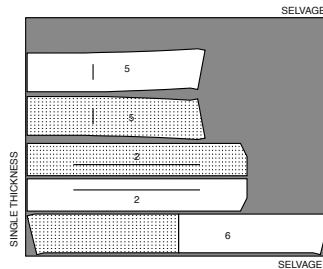
60" (150 cm)
with nap
all sizes



INTERFACING A

use pieces: 2 5 6

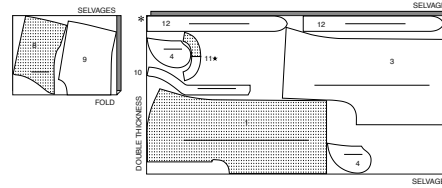
20" (51 cm)
without nap
all sizes



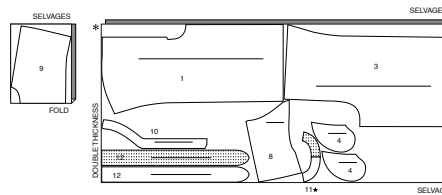
JUMPSUIT AND SASH B

use pieces: 1 3 4 8 9 10 11 12

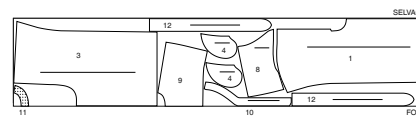
45" (115 cm)
with nap
sizes S M L XL



45" (115 cm)
with nap
sizes XXL



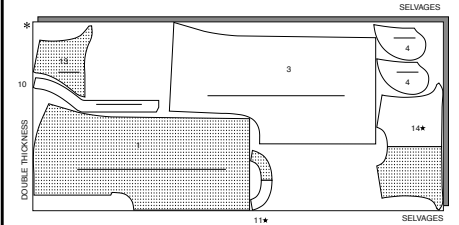
60" (150 cm)
with nap
all sizes



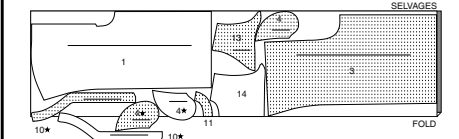
JUMPSUIT C

use pieces: 1 3 4 10 13 14

45" (115 cm)
with nap
all sizes



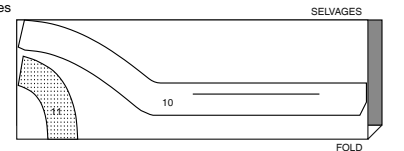
60" (150 cm)
with nap
all sizes



INTERFACING B,C

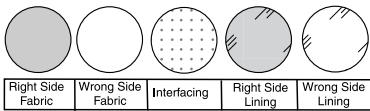
use pieces: 10 11

20" (51 cm)
without nap
all sizes



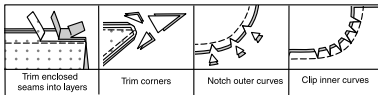
SEWING INFORMATION

FABRIC KEY



SEAM ALLOWANCES

Use 1/4" (6mm) seam allowances unless otherwise indicated.



PIN AND FIT

Pin or baste seams, **RIGHT SIDE TOGETHER**, matching notches. Fit garment before stitching major seams.

PRESS

Press seam allowances flat; then open unless otherwise stated. Clip where necessary so they lie flat.

GLOSSARY

Read **General Directions** on page 1 before you begin.→

Sewing methods in **BOLD TYPE** have Sewing Tutorial Video available. Scan **QR CODE** to watch videos:

FINISH - see **Seams**: "how to finish seam allowances" video.

GATHER - see **Gathering**: "sewing gathering with yarn" video.

REINFORCE - see **Machine Stitches**: "how to reinforce" video.

SLIPSTITCH - Slide needle through a folded edge, then pick up a thread of underneath fabric.

STITCH IN THE DITCH - see **Machine Stitches**: "how to stitch in the ditch" video.

STAYSTITCH - see **Machine Stitches**: "how to do stay-stitching" video.

TOPSTITCH - see **Machine Stitches**: "how to topstitch" video.

TRIM - see **How to Sew**: Trim, Clip, and Layer Seams" video.

UNDERSTITCH - see **Machine Stitches**: "how to understitch" video.

PATTERN PIECES WILL BE IDENTIFIED BY NUMBERS THE FIRST TIME THEY ARE USED.

STITCH IN 5/8" (1.5CM) SEAMS WITH RIGHT SIDES TOGETHER UNLESS OTHERWISE STATED.

SEWING TUTORIALS

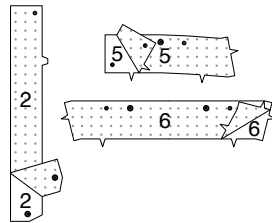


Build your skills viewing short, easy-to-follow videos at simplicity.com/sewingtutorials

JUMPSUIT A

INTERFACING

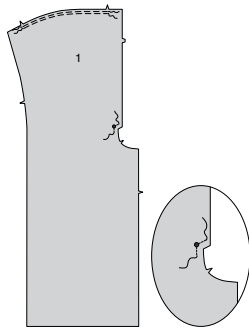
1. Fuse **INTERFACING** to wrong side of each matching **FABRIC** section, following manufacturer's instructions.



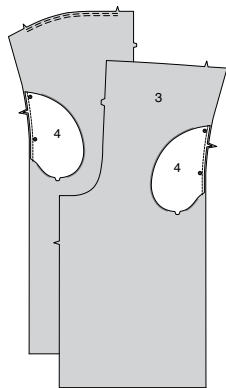
FRONT AND BACK

2. **GATHER** upper edge of each **FRONT** (1) section between notches.

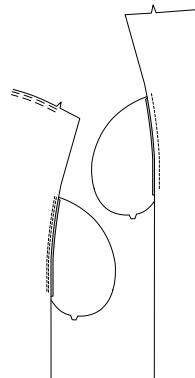
To **REINFORCE** inner corner of each front, stitch along seam line for about 1" (2.5cm) on each side of large dot, stitching through large dot.



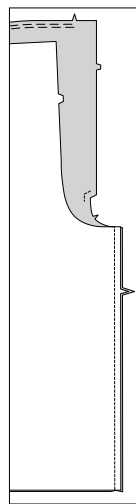
3. Stitch one **POCKET** (4) to side edge of each front and **BACK** (3) section in a 1/4" (6mm) seam, matching large dots. Press seam towards pockets.



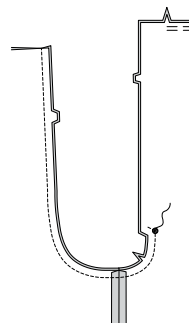
4. **UNDERSTITCH** front pocket.



5. Stitch front to back at inner leg seams.



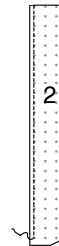
6. With **RIGHT** sides together, pin center seam, matching inner leg seams and large dots. Stitch, leaving seam open above large dot.



7. **GATHER** upper edge of back between notches.



8. **FINISH** long unnotched edge of **FRONT FACING** (2) sections.

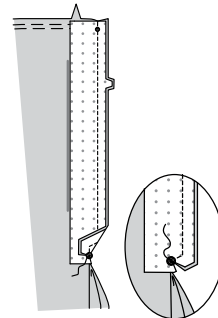


9. With right sides together and raw edge even, pin right facing to right front, matching double notches, small and large dots.

Stitch seam to large dot, being careful not to catch left front section.

TRIM seam and corners.

Clip inner corner to stitching at large dot, being careful not to clip through stitching. Stitch left facing to left front in same manner.

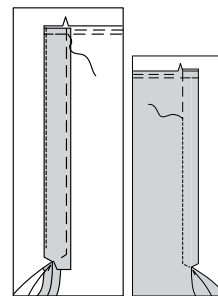


10. **UNDERSTITCH** facing as far as possible. Turn facing to inside; press.

Baste upper raw edges together.

Baste close to long inner edge of facing.

On outside, **TOPSTITCH** along stitching lines; remove basting.

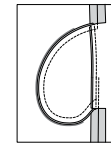
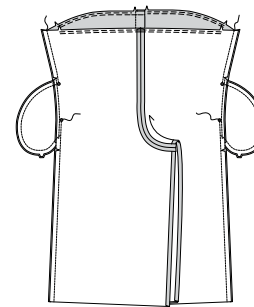


11. Pin front to back at sides, matching large dots.

Stitch, leaving open between large dots. Stitch pocket edges together between side seams.

Clip back seam allowances above and below pockets.

Press pockets toward front.



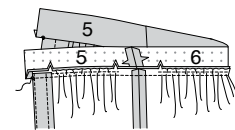
12. Stitch **FRONT BAND** (5) and **BACK BAND** (6) sections together at side seams. Pin band to jumpsuit, matching side seams, notches, and small dots. (Front edges of band will extend 5/8" (1.5cm) beyond finished edges of jumpsuit).

Adjust gathers to fit between notches; baste. Stitch.

TRIM seam.

Press band out, pressing seam toward band.

The remaining bands will be used for the band facing.

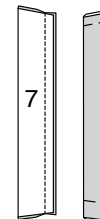


13. Fold **SHOULDER STRAP** (7) along foldline with right sides together.

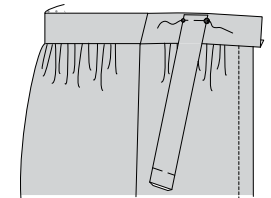
Stitch long edges.

Turn strap; press.

Baste raw edges together.



14. On outside, baste straps to upper edge of band front, matching small and large dots, having raw edges even.

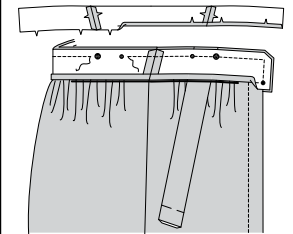


15. Stitch seams of band facing sections same as for band; press under 1/2" (1.3cm) on lower unnotched edge.

Pin facing to band, turning seam allowance down at front edges so that raw edges are even, matching side seams, centers, small, and large dots.

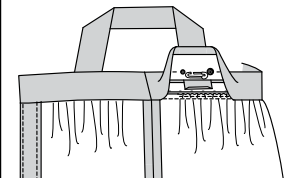
Stitch raw edges together, leaving an opening on each side of back to within 1/4" (6mm) of small and large dots, as shown.

TRIM seam and corners, avoiding seams at back openings.



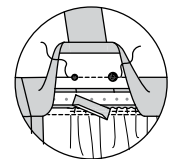
16. Turn facing to inside. Press.

Insert free ends of straps through openings in back band, matching small and large dots; pin in place with a safety pin.



17. Try on jumpsuit and adjust straps to fit. Stitch openings closed.

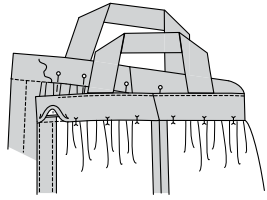
TRIM remaining seams and ends of straps even with seam allowance.



18. UNDERSTITCH facing as far as possible.

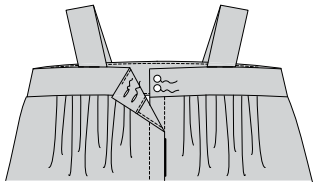
Turn facing to inside.
Pin pressed edge of facing 1/8" (3mm) over seam, placing pins on inside.

On outside, **STITCH IN THE DITCH** of seam.

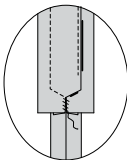


FINISHING

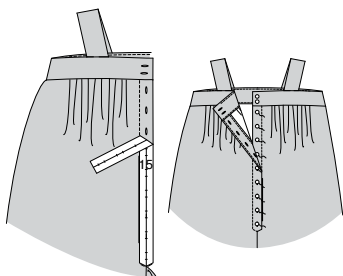
19. Make buttonholes in right front band at markings. Lap right front over left, matching centers front. Sew buttons under buttonholes.



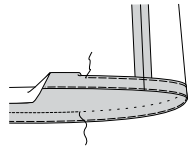
20. On inside, turn in seam allowances on lower edge of facings below opening, as shown. **SLIPSTITCH** together.



21. To mark buttonholes in right front below band, place **BUTTONHOLE GUIDE** (15) along finished edge of front. Transfer buttonhole marking to jumpsuit. Make buttonholes at markings. Lap right front over left, matching centers front. Sew buttons under buttonholes.



22. Press up 1-1/4" (3.2cm) hem on lower edge. Baste close to fold. Turn under 1/4" (6mm) on raw edge. Baste hem in place close to upper edge. Press. **TOPSTITCH** hem along upper basting.

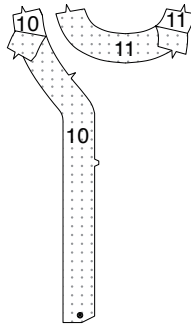


JUMPSUIT B, C

NOTE: The first view mentioned will be illustrated unless otherwise indicated.

INTERFACING

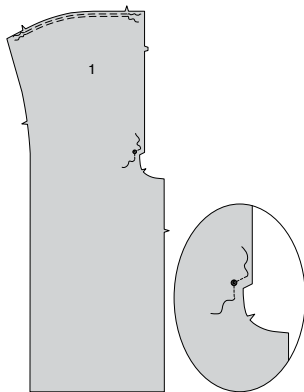
1. Fuse **INTERFACING** to wrong side of each matching **FABRIC** section, following manufacturer's instructions.



FRONT AND BACK

2. **GATHER** upper edge of each **FRONT** (1) section between notches.

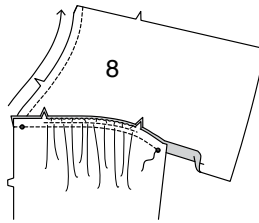
To **REINFORCE** inner corner of each front, stitch along seam line for about 1" (2.5cm) on each side of large dot, stitching through large dot.



3. VIEW B:

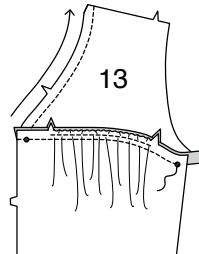
STAYSTITCH neck edge of each **YOKE AND SLEEVE FRONT** (8) section in direction of arrow. With right sides together and raw edges even, pin yoke and sleeve front to front, matching centers, notches, and small dots.

Adjust gathers to fit between notches; baste. Stitch seam to small dot at underarm. Press seam toward yoke.



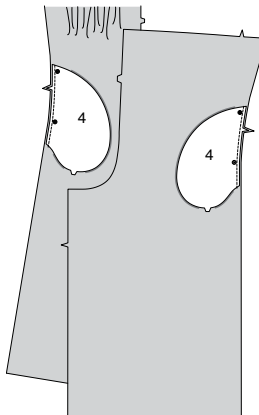
4. VIEW C:

STAYSTITCH neck edge of each **YOKE FRONT** (13) section in direction of arrow. With right sides together and raw edges even, pin yoke to front, matching centers, notches, and small dots. Adjust gathers to fit between notches; baste. Stitch seam to small dot at underarm. Press seam toward yoke.

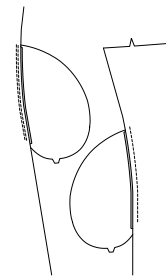


5. VIEWS B, C:

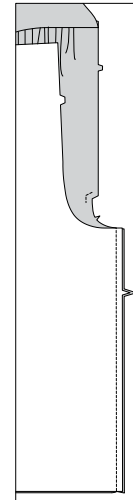
Stitch one **POCKET** (4) section to front and **BACK** (3) at each side in a 1/4" (6mm) seam, matching large dots. Press seam towards pockets.



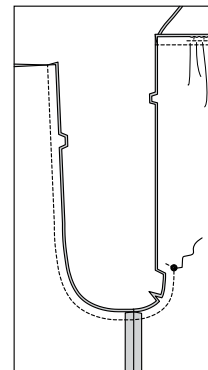
6. UNDERSTITCH front pocket.



7. Stitch front to back at inner leg seams.



8. With **RIGHT** sides together, pin center seam, matching inner leg seams. Stitch center seam, leaving seam open above large dot.



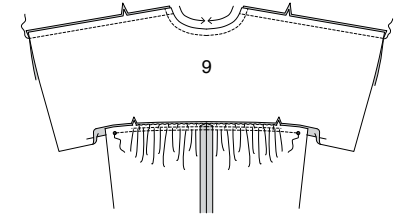
9. GATHER upper edge of back between notches.



10. VIEW B:

STAYSTITCH neck edge of **YOKE BACK** (9) section in direction of arrows. With right sides together and raw edges even, pin yoke and sleeve back to back, matching centers, notches, and small dots. Adjust gathers to fit between notches; baste. Stitch between small dots.

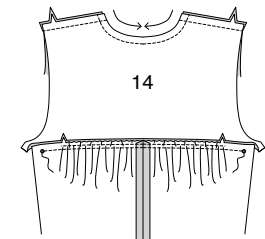
Press seam toward yoke. Stitch back to front at shoulders.



11. VIEW C:

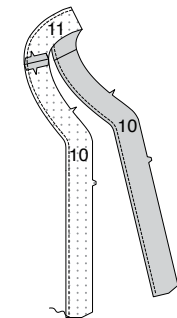
STAYSTITCH neck edge of **YOKE BACK** (14) section in direction of arrows. With right sides together and raw edges even, pin yoke to back, matching centers, notches, and small dots. Adjust gathers to fit between notches; baste. Stitch between small dots.

Press seam toward yoke. Stitch back to front at shoulders.

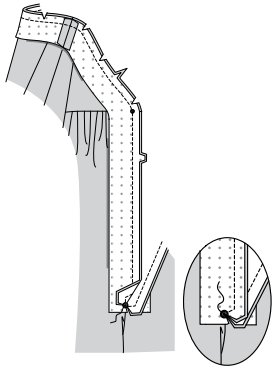


12. VIEWS B, C:

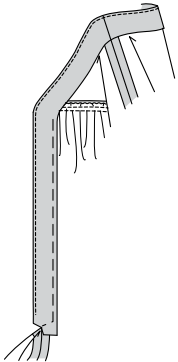
Stitch **FRONT FACING** (10) to **BACK FACING** (11) at shoulders. **FINISH** long unnotched edge.



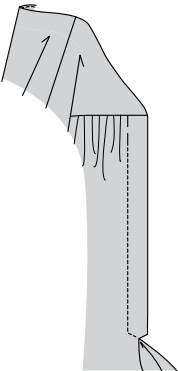
13. Pin facing to front and neck edges, matching shoulder seams, centers back, and large dots. Stitch seam between large dots. **TRIM** seam and corners. Clip inner corner on right front to large dot, being careful not to clip through stitching.



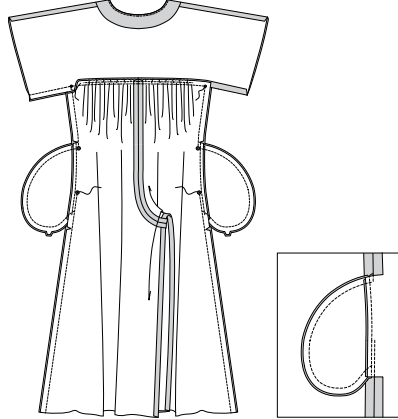
14. UNDERSTITCH facing. Turn facing to inside; press. Baste close to long inner edge of facing below yoke seams. On outside, **TOPSTITCH** along stitching lines; remove basting.



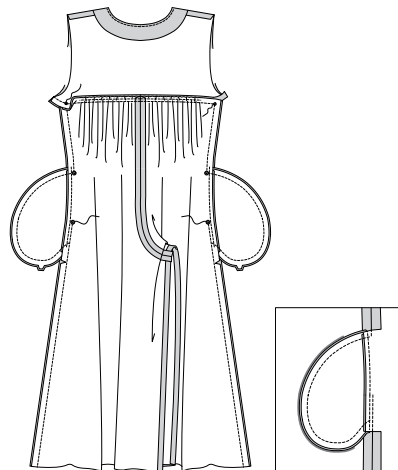
15. On right side, **TOPSTITCH** along stitching line, as shown.



16. VIEW B: Pin front to back at underarms and sides, matching small and large dots. To stitch underarm seam, turn seam allowances down; stitch to small dot, being careful not to catch in front and back. To stitch side seams, turn seam allowances up; stitch below small dot, leaving opening between large dots, and being careful not to catch in yoke. Stitch pocket edges together between side seams. Stitch pocket edges together between side seams. Clip back seam allowances above and below pockets. Press pockets toward front.



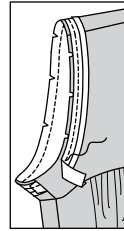
17. VIEW C: Pin front to back at underarms and sides, matching small and large dots. To stitch underarm seam, turn seam allowances down; stitch to small dot, being careful not to catch in front and back. To stitch side seams, turn seam allowances up; stitch below small dot, leaving opening between large dots, and being careful not to catch in yoke. Stitch pocket edges together between side seams. Clip back seam allowances above and below pockets. Press pockets toward front.



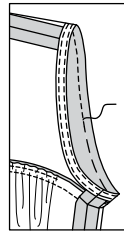
FINISHING

18. VIEW C: Open out one edge of single fold bias tape.

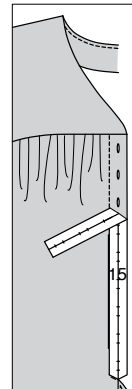
With **RIGHT** sides together, pin tape to armhole edge having raw edges even, turning under and lapping one end at side seam. Stitch in a 3/8" (1cm) seam. **TRIM** seam; clip curves.



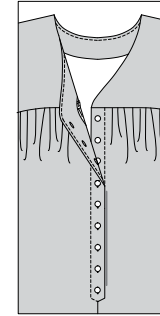
19. UNDERSTITCH tape. Turn tape to **INSIDE**; press. Baste close to inner edge of tape. On **OUTSIDE**, top-stitch as basted.



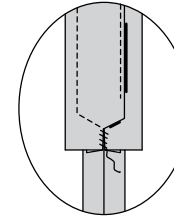
20. VIEWS B, C: To mark buttonholes in right front, place **BUTTONHOLE GUIDE** (15) along finished edge of front. Transfer buttonhole marking to jumpsuit. Make buttonholes at markings.



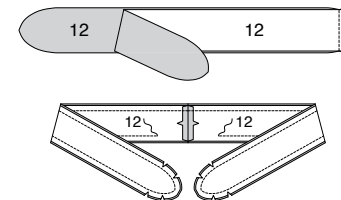
21. Lap right front over left, matching centers front. Sew buttons under buttonholes.



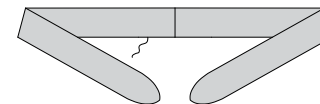
22. On inside, turn in seam allowances on lower edge of facings below opening, as shown. **SLIPSTITCH** together.



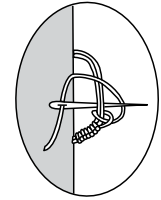
23. VIEW B: Stitch notched ends of two **SASH** (12) sections. Pin sash sections together, matching seams and having raw edges even. Stitch, leaving an opening for turning.



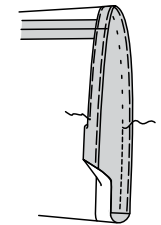
24. Turn sash; press. **SLIPSTITCH** opening closed.



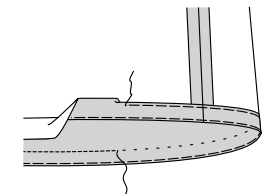
25. Try on jumpsuit. Wrap sash around waist where it looks right and feels comfortable. Mark side seams above and below sash. Make a thread loop at each side seam between markings, making it large enough to accommodate sash.



26. VIEW B: Press up 1-1/4" (3.2cm) hem on lower edge of sleeve. Baste close to fold. Turn in 1/4" (6mm) on raw edge; baste close to upper pressed edge. **TOPSTITCH** hem along upper basting.



27. VIEWS B, C: Press up 1-1/4" (3.2cm) hem on lower edge of jumpsuit. Baste close to fold. Turn in 1/4" (6mm) on raw edge; baste close to upper edge. **TOPSTITCH** hem along upper basting.





Congrats!

You've completed your sewing adventure

**SHARE
YOUR** LOOK



Post your pattern and tag us
[@simplicity_creative_group](#) and [#simplicitypatterns](#)
for a chance to be featured on our social media.

Look for more PDF patterns at [simplicity.com](https://www.simplicity.com)

Have a question or need help with your sewing project call us at
1-800-782-0323

McCall's
by **design**_{group}