

McCall's

M8455



Designed and printed in USA

Easy

MISSES' KNIT TOP AND LEGGINGS

Suggested Fabrics: Stretch Knits only such as Athletic Knits, Four-Way Stretch Knits. See Stretch Gauge.

Notions: **A:** 1½ yds. (1.3m) of ¾" (2cm) elastic. **B:** 1½ yds. (1.3m) of 1" (2.5cm) elastic. **C,D:** 1 ¾ yds. (1.3m) of ¾" (1cm) elastic.

| Sizes | XS (4-6) | S (8-10) | M (12-14) | L (16-18) | XL (20-22) | XXL (24-26) |
|----------|-------------|-------------|--------------|--------------|---------------|----------------|
| European | 30-32 | 34-36 | 38-40 | 42-44 | 46-48 | 50-52 |

BODY MEASUREMENTS: Select pattern size based on body measurements

| | | | | | | | |
|---------------------------|---------|---------|---------|--------|---------|--------|------|
| Bust | 29½-30½ | 31½-32½ | 34-36 | 38-40 | 42-44 | 46-48 | Ins. |
| Waist | 22-23 | 24-25 | 26½-28 | 30-32 | 34-37 | 39-41½ | " |
| Hip-9" below waist | 31½-32½ | 33½-34½ | 36-38 | 40-42 | 44-46 | 48-50 | " |
| Back-neck to waist | 15¼-15½ | 15¾-16 | 16¼-16½ | 16¾-17 | 17¼-17½ | 17¾-18 | " |

Top A (finishes approx. 4" above waist)

| | | | | | | | |
|------|---|---|---|---|---|----|------|
| 60** | 1 | 1 | 1 | 1 | 1 | 1½ | Yds. |
|------|---|---|---|---|---|----|------|

Top B (finishes approx. 4" above waist)

| | | | | | | | |
|------|---|---|----|----|----|----|------|
| 60** | 1 | 1 | 1½ | 1½ | 1½ | 1½ | Yds. |
|------|---|---|----|----|----|----|------|

Leggings C

| | | | | | | | |
|------|----|----|----|----|----|----|------|
| 60** | 1¼ | 1¼ | 1¼ | 1¼ | 1¼ | 1¼ | Yds. |
|------|----|----|----|----|----|----|------|

Contrast 1 (Side Panels, Pocket)

| | | | | | | | |
|------|----|----|----|----|----|----|------|
| 60** | 1½ | 1½ | 1½ | 1½ | 1½ | 1½ | Yds. |
|------|----|----|----|----|----|----|------|

Contrast 2 (Yokes)

| | | | | | | | |
|------|---|---|---|---|---|---|------|
| 60** | ¾ | ¾ | ¾ | ¾ | ¾ | ¾ | Yds. |
|------|---|---|---|---|---|---|------|

Leggings D

| | | | | | | | |
|------|----|----|----|----|----|---|------|
| 60** | 1¾ | 1¾ | 1¾ | 1¾ | 1¾ | 2 | Yds. |
|------|----|----|----|----|----|---|------|

FINISHED GARMENT MEASUREMENTS (Includes Design and Wearing Ease)

| | | | | | | | |
|--|-----|-----|-----|-----|-----|-----|------|
| A,B Bust | 30½ | 32½ | 36 | 40 | 44 | 48 | Ins. |
| C,D Hip | 34 | 36 | 39½ | 43½ | 47½ | 51½ | " |
| Width, each leg | | | | | | | |
| Leggings C,D | 10½ | 11 | 11½ | 12 | 12½ | 13 | Ins. |
| Finished side length from waist | | | | | | | |
| Leggings C | 38 | 38½ | 39 | 39½ | 40 | 40½ | Ins. |
| Leggings D | 41½ | 42 | 42½ | 43 | 43½ | 44 | " |

*with nap **without nap

Facile

HAUT ET COLLANT EN TRICOT POUR JEUNES FEMMES

Tissus Conseillés: Seulement pour tricotés extensibles tels que Mailles de sport, Tricotés extensibles à quatre voies. Reportez-vous au taux d'élasticité.

Mercrierie: **A:** 1.3m d'élastique de 2cm. **B:** 1.3m d'élastique de 2.5cm. **C,D:** 1.3m d'élastique de 1cm.

| Tailles | TP/XS | P/S | M/M | G/L | TG/XL | TTG/XXL |
|------------|-------|-------|-------|-------|-------|---------|
| Françaises | 32-34 | 36-38 | 40-42 | 44-46 | 48-50 | 52-54 |
| Européen | 30-32 | 34-36 | 38-40 | 42-44 | 46-48 | 50-52 |

MESURES DU CORPS: Choisissez la taille du patron basée sur les mesures du corps

| | | | | | | | |
|---|---------|---------|---------|---------|---------|---------|----|
| Poitrine | 75-77 | 80-83 | 87-92 | 97-102 | 107-112 | 117-122 | cm |
| Taille | 56-58 | 61-64 | 67-71 | 76-81 | 87-94 | 99-105 | " |
| Hanches (23cm au-dessous de la taille) | | | | | | | |
| | 80-83 | 85-88 | 92-97 | 102-107 | 112-117 | 122-127 | cm |
| Dos du cou à la taille | 39-39.5 | 40-40.5 | 41.5-42 | 42.5-43 | 44-44.5 | 45-45.5 | " |

Haut A (finitions environ 10cm au-dessus de la taille)

| | | | | | | | |
|--------|-----|-----|-----|-----|-----|-----|---|
| 150cm* | 0.9 | 0.9 | 0.9 | 0.9 | 0.9 | 0.9 | m |
|--------|-----|-----|-----|-----|-----|-----|---|

Haut B (finitions environ 10cm au-dessus de la taille)

| | | | | | | | |
|--------|-----|-----|-----|-----|-----|-----|---|
| 150cm* | 0.9 | 0.9 | 0.9 | 1.0 | 1.0 | 1.1 | m |
|--------|-----|-----|-----|-----|-----|-----|---|

Collant C

| | | | | | | | |
|--------|-----|-----|-----|-----|-----|-----|---|
| 150cm* | 1.1 | 1.1 | 1.1 | 1.1 | 1.1 | 1.1 | m |
|--------|-----|-----|-----|-----|-----|-----|---|

Contraste 1 (Panneaux latéraux, poches)

| | | | | | | | |
|--------|-----|-----|-----|-----|-----|-----|---|
| 150cm* | 1.0 | 1.0 | 1.0 | 1.0 | 1.0 | 1.0 | m |
|--------|-----|-----|-----|-----|-----|-----|---|

Contraste 2 (Empiècements)

| | | | | | | | |
|--------|-----|-----|-----|-----|-----|-----|---|
| 150cm* | 0.2 | 0.2 | 0.3 | 0.3 | 0.3 | 0.3 | m |
|--------|-----|-----|-----|-----|-----|-----|---|

Collant D

| | | | | | | | |
|--------|-----|-----|-----|-----|-----|-----|---|
| 150cm* | 1.3 | 1.3 | 1.6 | 1.6 | 1.6 | 1.8 | m |
|--------|-----|-----|-----|-----|-----|-----|---|

MESURES DES VÊTEMENTS FINI (Motif et aisance de port compris)

| | | | | | | | |
|---|-----|-----|-----|-----|-----|-----|----|
| A,B Poitrine | 77 | 83 | 91 | 102 | 112 | 122 | cm |
| C,D Hanches | 86 | 91 | 100 | 110 | 121 | 131 | " |
| Largeur, chaque jambe | | | | | | | |
| Leggings C,D | 27 | 28 | 29 | 30 | 32 | 33 | cm |
| Longueur finie - côté, taille à l'ourlet | | | | | | | |
| Leggings C | 97 | 98 | 99 | 100 | 102 | 103 | cm |
| Leggings D | 105 | 107 | 108 | 109 | 110 | 112 | " |

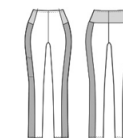
*avec sens **sans sens



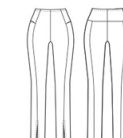
A



B



C



D

Use the 1 inch (2.54cm) box to ensure you are using rule at 100%

Utilisez la boîte de 2,54 cm pour vous assurer d'utiliser la règle à 100%.

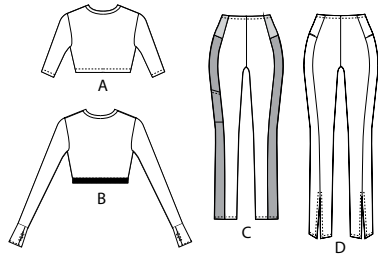
Utilizar un cuadrado de 2,54 cm para asegurarse de estar usando la regla al 100%.

4" of crosswise folded fabric must **STRETCH** from here
10 cm de tricot plié sur le travers et sur le droit-fil doivent s'étirer de cette limite à celle là
10 cm de tejido de punto doblado (a lo largo y luego al través) deben estirarse desde acá

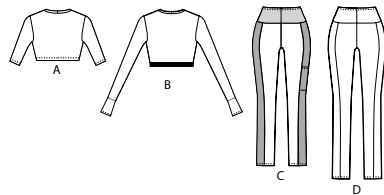
To Here 75%
jusqu'ici 75%
hasta acá 75%

When using the Pick-A-Knit® rule to measure your fabrics stretch capacity, rule must be viewed or printed at 100%.
Quand vous utilisez le taux d'élasticité pour mesurer la capacité d'élasticité des tissus, le taux doit être visible ou imprimé à 100%.
Al utilizar el calibre de elasticidad para medir la capacidad de elasticidad de las telas, el calibre debe estar visible o impreso al 100%.

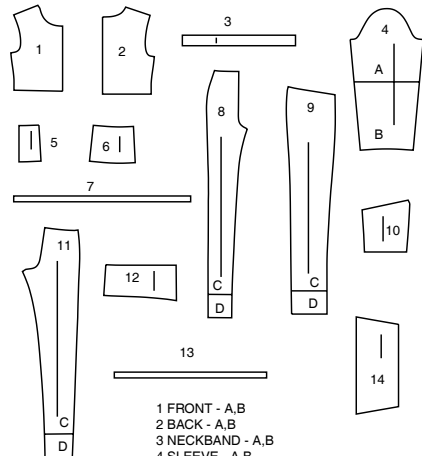
FRONT



BACK

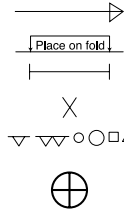


14 PATTERN PIECES



- 1 FRONT - A,B
- 2 BACK - A,B
- 3 NECKBAND - A,B
- 4 SLEEVE - A,B
- 5 CUFF FRONT - B
- 6 CUFF - B
- 7 GUIDE FOR ELASTIC - A,B
- 8 FRONT - C,D
- 9 SIDE PANEL - C,D
- 10 POCKET - C
- 11 BACK - C,D
- 12 YOKE - C,D
- 13 ELASTIC GUIDE FOR WAIST - C,D
- 14 POCKET - D

PATTERN MARKINGS



GRAINLINE: Place on straight grain of fabric, parallel to selvage or fold.
FOLDLINE: Place line on fold of fabric.
BUTTONHOLE MARKING: Indicates exact length and placement of buttonholes.
BUTTON MARKING: Indicates button placement.
NOTCHES AND SYMBOLS: For matching seams and construction details.
 Indicates the Bustline, Waistline, Hip and/or Biceps. Measurements refer to circumference of Finished Garment (Body Measurement + Wearing Ease + Design Ease). Adjust pattern if necessary. The measurement excludes pleats, tucks, darts and seam allowances.
SEAM ALLOWANCE: 5/8" (1.5cm) included unless otherwise indicated, but not printed on tissue.

ADJUST IF NECESSARY

Lengthen or Shorten at adjustment lines (==) or where indicated on pattern. If substantial length is added, you may need to purchase additional fabric.
TO SHORTEN: Crease along adjustment line. Make a fold half the amount needed. Tape in place.
TO LENGTHEN: Slash between adjustment lines. Spread amount as needed, keeping edges parallel. Tape over paper.
 When Alteration lines are not on tissue, lengthen or shorten at lower edge.

CUTTING AND MARKING

SHRINK FABRIC if not labeled pre-shrunk. Press.

CIRCLE LAYOUT for View, Size, Fabric Width.

Use **WITH NAP** layout for fabrics with one-way designs, nap, pile or surface shading. Because most knits have surface shading, a with nap layout is used.

For **DOUBLE THICKNESS (WITH FOLD)** - fold fabric with right sides together.

*** DOUBLE THICKNESS (WITHOUT FOLD)** - For fabrics with nap, fold fabric crosswise, right sides together. Mark as shown. Cut along crosswise fold of fabric (A). Turn upper layer 180° so arrows go in same direction and place over lower layer, right sides together (B).

For **SINGLE THICKNESS** - place fabric right side up. (For Fur Pile fabrics, place pile side down.)

★ Cut other pieces first, allowing enough fabric to cut this piece. Open fabric. For "Cut 1" pieces, cut piece once on single layer of fabric with piece face up on right side of fabric.

Pattern may have cutting lines for several sizes. Select the proper cutting line or pattern pieces for your size.

Before **CUTTING** place all pieces on fabric according to layout. Pin. (Layouts show approximate position of pattern pieces; position may vary according to your pattern size.) Cut **ACCURATELY**, cutting notches outward.

Before removing pattern, **TRANSFER MARKINGS** and lines of construction to Wrong Side of fabric, using the Pin and Chalk Pencil method or Tracing Paper and Dressmaker Wheel. Markings needed on right side of fabric should be thread traced.

NOTE: Broken-line boxes (a! b! c!) in layouts represent pieces cut by measurements provided.

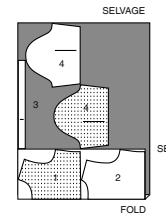
CUTTING LAYOUTS

| | | | |
|-----------------------|-----------------------|----------------------|----------------------|
| RIGHT SIDE OF PATTERN | WRONG SIDE OF PATTERN | RIGHT SIDE OF FABRIC | WRONG SIDE OF FABRIC |
|-----------------------|-----------------------|----------------------|----------------------|

TOP A

use pieces: 1 2 3 4

60" (150 cm)
with nap
all sizes

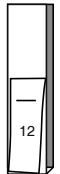


CONTRAST 2 (YOKES)

use pieces: 12

60" (150 cm)
with nap
all sizes

SELVAGES

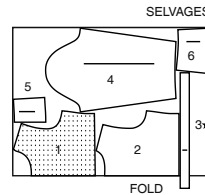


FOLD

TOP B

use pieces: 1 2 3 4 5 6

60" (150 cm)
with nap
all sizes

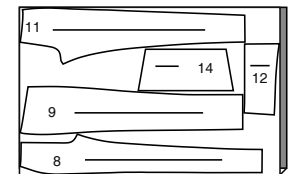


LEGGINGS D

use pieces: 8 9 11 12 14

60" (150 cm)
with nap
sizes XS S

SELVAGES

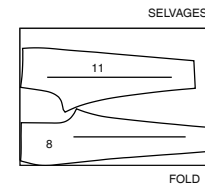


FOLD

LEGGINGS C

use pieces: 8 11

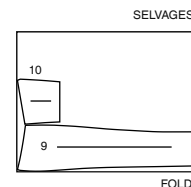
60" (150 cm)
with nap
all sizes



CONTRAST 1 (SIDE PANELS, POCKET)

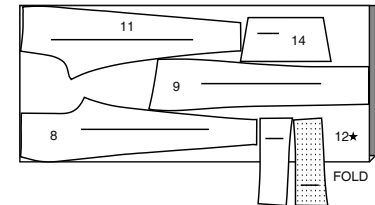
use pieces: 9 10

60" (150 cm)
with nap
all sizes



60" (150 cm)
without nap
sizes M L XL XXL

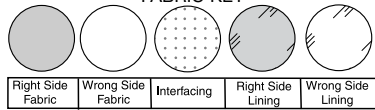
SELVAGES



FOLD

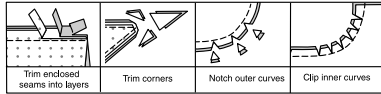
SEWING INFORMATION

FABRIC KEY



SEAM ALLOWANCES

Use 5/8" (1.5cm) seam allowances unless otherwise indicated.



PIN AND FIT

Pin or baste seams, **RIGHT SIDE TOGETHER**, matching notches. Fit garment before stitching major seams.

PRESS

Press seam allowances flat; then open unless otherwise stated. Clip where necessary so they lie flat.

GLOSSARY

Read **General Directions** on page 1 before you begin.

Sewing methods in **BOLD TYPE** have Sewing Tutorial Video available. Scan QR CODE to watch videos:

DOUBLE-STITCH - see Machine Stitches: "how to double-stitch" video.

EASE/GATHER - see Gathering: "sewing two row gathers" video.

EDGESTITCH - see Machine Stitches: "how to edgestitch" video.

FINISH - see Seams: "how to finish seam allowances" video.

NARROW HEM - see Hems: "sewing narrow hems" video.

SLEEVE - see Armholes/Sleeves: "sewing a set-in sleeve" video.

TACK - See Hand-Stitching: "how to tack" video.

TOPSTITCH - see Machine Stitches: "how to topstitch" video.

UNDERSTITCH - see Machine Stitches: "how to understitch" video.

SEWING TUTORIALS



Build your skills viewing short, easy-to-follow videos at simplicity.com/sewingtutorials

PATTERN PIECES WILL BE IDENTIFIED BY NUMBERS THE FIRST TIME THEY ARE USED.

STITCH IN 5/8" (1.5CM) SEAMS WITH RIGHT SIDES TOGETHER UNLESS OTHERWISE STATED.

SEWING DIRECTIONS

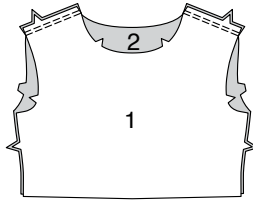
TOP A, B

NOTE: Stretch fabric evenly in front and back of needle while stitching.

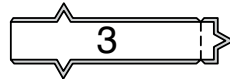
NOTE: The first view mentioned will be illustrated, unless otherwise indicated.

FRONT AND BACK

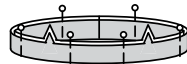
1. Stitch **FRONT** (1) to **BACK** (2) at shoulders in **DOUBLE-STITCHED** seams. Press seams towards back.



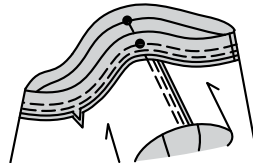
2. Stitch ends of **NECK BAND** (3).



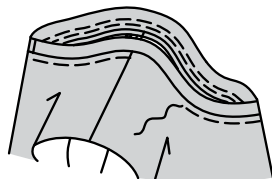
3. With wrong sides together, fold neck band in half lengthwise, having raw edges even; press. Pin raw edges together.



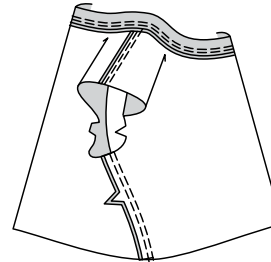
4. With right sides together, pin neck band to top, placing seam at center back and small dots at shoulder seams, matching centers front and notches. Stitch in a 3/8" (1cm) **DOUBLE-STITCHED** seam, stretching neck band to fit. Press band out, pressing seam toward top.



5. **EDGESTITCH** neck edge of top.



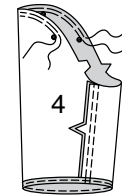
6. Stitch front to back at sides in **DOUBLESTITCHED** seams. Press seams toward back.



SLEEVE

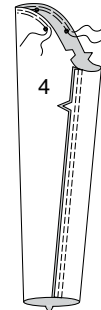
7. VIEW A:

EASE top of **SLEEVE** (4) between outer small dots. Stitch underarm seam in a **DOUBLE-STITCHED** seam. Press seam toward back. Make a 5/8" (1.5CM) **NARROW HEM** on lower edge of sleeve.

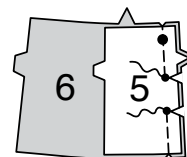


8. VIEW B:

EASE top of **SLEEVE** (4) between outer small dots. Stitch underarm seam in a **DOUBLE-STITCHED** seam. Press seam toward back.

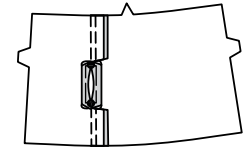


9. Pin **CUFF FRONT** (5) to **CUFF** (6), matching small dots. Stitch first row of **DOUBLE-STITCHED** seam along 5/8" (1.5cm) seamline, leaving open between small dots. Clip seam allowances to stitching at small dots, being careful not to clip through stitching.

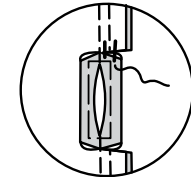


10. Stitch remaining row of **DOUBLE-STITCHED** seam to each clip. Press seam toward cuff.

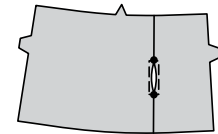
To form openings for thumb, baste a 5/8" (1.5cm) **NARROW HEM** between small dots, squaring stitches at ends of opening.



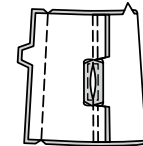
11. On inside, hand-tack seam allowances to raw edges of clip.



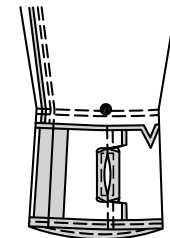
12. On outside, topstitch as basted, squaring stitches at small dots; remove basting.



13. Stitch underarm seam of cuff, matching double notches.

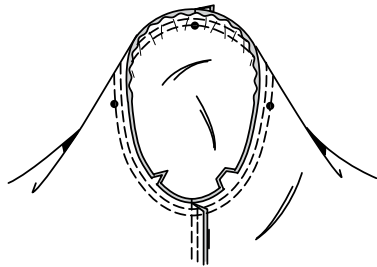


14. Make a 5/8" (1.5cm) **NARROW HEM** on unnotched edge of cuff. Stitch cuff to lower edge of sleeve in a **DOUBLE-STITCHED** hem, matching seams and large dots. Press seam toward cuff.



15. VIEWS A, B:

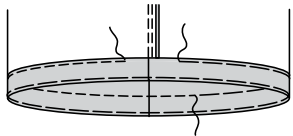
Stitch **SLEEVE** into armhole in a **DOUBLE-STITCHED** seam, having center small dot at shoulder seam, matching underarm seams and remaining small dots.
Turn seam toward sleeve.



FINISHING

16. VIEW A:

Turn up 1-1/4" (3.2cm) on lower edge of top; baste close to fold.
FINISH raw edge. Baste 7/8" (2.2cm) from fold.
TOPSTITCH as basted, leaving an opening.
Remove basting.

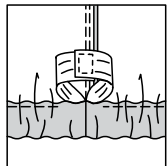


17. Cut a piece of elastic the length of **GUIDE FOR ELASTIC (7.)**

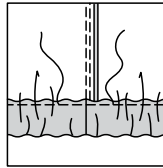


18. Insert elastic through casing.

Lap ends, matching centers back; stitch ends of elastic securely together.



19. Stitch opening in casing, stretching elastic while stitching.

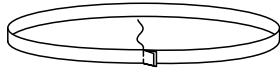


20. VIEW B:

Cut a piece of elastic the length of **GUIDE FOR ELASTIC (7.)**



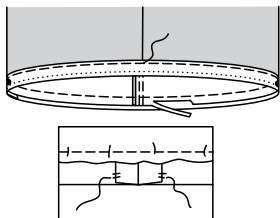
21. Stitch ends of elastic together at center back. Press open.



22. On outside, pin upper edge of elastic 5/8" (1.5cm) over raw edge, matching centers.
Stitch close to upper edge, stretching elastic to fit.
TRIM fabric on inside.

TACK ends of elastic to elastic band.

TIP- If you prefer, place elastic seam at one of the side seams, remarking centers front and back for side seam application.



PANTS C, D

NOTE: Stretch fabric evenly in front and back of needle while stitching.

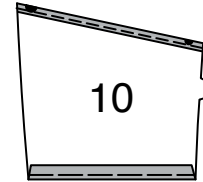
NOTE: The first view mentioned will be illustrated, unless otherwise indicated.

SIDE PANEL AND POCKET

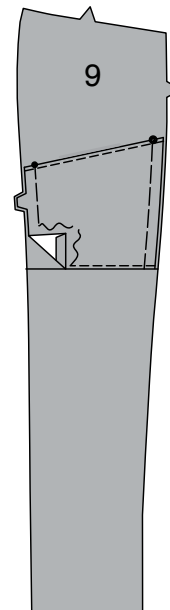
1. VIEW C:

Make a 5/8" (1.5cm) **NARROW HEM** on upper edge of each **POCKET (10)** section.

Turn under seam allowance on lower edge of pocket.
Baste close to fold.

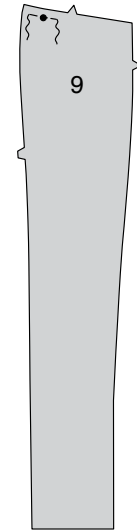


2. On outside, pin one pocket to each **SIDE PANEL (9)** section, having lower edge along placement line and raw edges even, matching small and large dots.
Baste side edges.
EDGESTITCH lower edge of pocket.

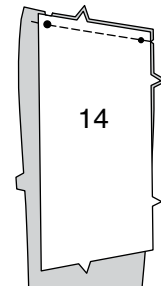


3. VIEW D:

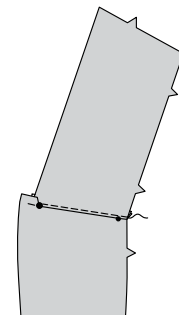
To reinforce upper edge of each **SIDE PANEL (9)** section for clip, using fine stitches, stitch along seam line for about 3/4" (2cm) on each side of large dot, stitching through each dot.



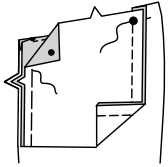
4. With right sides together, pin one end of each **POCKET (14)** to upper edge of side panel, matching small and large dots; stitch to large dot.
Clip panel seam allowance to reinforcement stitching at large dot, being careful not to clip through stitching.



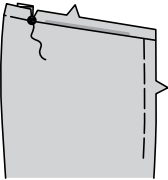
5. Press pocket out, pressing seam toward pocket.
UNDERSTITCH to clip.



6. With right sides together and raw side edges even, fold pocket along foldline, matching small and large dots. Check on outside to make sure that the finished edge of panel is along pocket seamline. Baste notched sides edge of pocket and panel together through all thicknesses. Stitch remaining side edges of pocket to large dot, having raw edges even, keeping panel free.

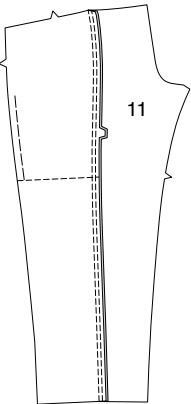


7. On outside, baste upper edges of pocket and panel seam allowances together to large dot.

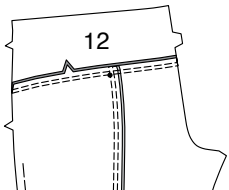


YOKE, BACK, AND FRONT

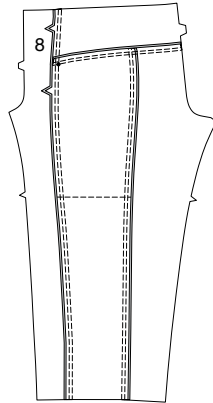
8. Pin BACK (11) section to side panel at sides, matching double notches; stitch in a **DOUBLE-STITCHED** seam. Press seam toward back.



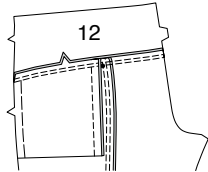
9. VIEW C:
Pin YOKE (12) to upper edge of back and side, placing small dot at side seam. Stitch in a **DOUBLE-STITCHED** seam, stretching yoke to fit between small dot and back edges. Press yoke out, pressing seam toward yoke.



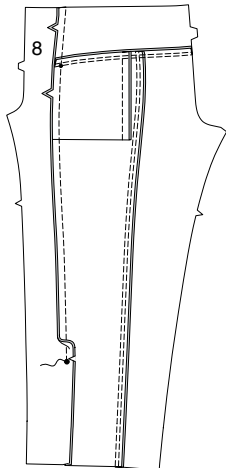
10. Pin FRONT (8) to side panel, matching small dots. Stitch in a **DOUBLE-STITCHED** seam; press seam toward center front.



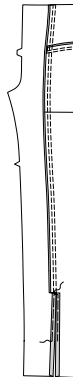
11. VIEW D:
Pin YOKE to upper edge of back and side, placing small dot at side seam. Stitch in a **DOUBLE-STITCHED** seam, stretching yoke to fit between small dot and back edges, being careful not to catch in opening edge of pocket. Press yoke out, pressing seam toward yoke. **TIP-** It may be helpful to use a zipper foot when stitching in area of pocket opening.



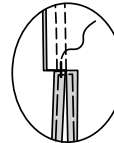
12. Pin side panel to FRONT (8), matching small and large dots. Stitch first row of **DOUBLE-STITCHED** seam along 5/8" (1.5cm) seamline to large dot. Clip seam allowance to stitching at large dot, being careful not to clip through stitching.



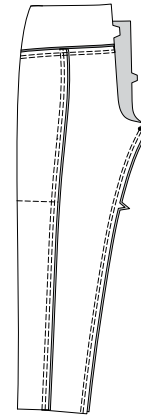
13. Stitch remaining row of **DOUBLE-STITCHED** seam above large dot. Press seam toward front. Baste in a 5/8" (1.5cm) **NARROW HEM** on slit opening edges to within 4" (10cm) of lower edge, squaring stitches at top of opening.



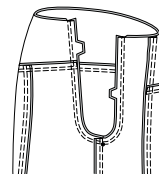
14. On inside, hand-tack lower edge of seam to top of basted slit.



15. VIEWS C, D:
Pin back to front at inner leg seams, matching small dots and notches. Stitch in a **DOUBLE-STITCHED** seam, stretching back to fit between small dots and notches. Press seam toward back.

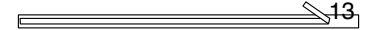


16. Turn one leg right side out; slip inside remaining leg. Pin center seam, matching inner leg and yoke seams. Stitch crotch in a **DOUBLE-STITCHED** seam, matching inner leg seams. Press seam to one side.



FINISHING

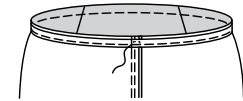
17. Cut one piece of elastic the length of **ELASTIC GUIDE FOR WAIST** (13).



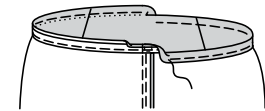
18. Lap ends of elastic, matching centers back; stitch ends of elastic securely together.



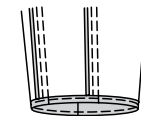
19. On inside, pin lower edge of elastic to pants along waist seamline, matching centers front and back. (You will leave 1/4" (6mm) of fabric above upper edge of elastic). Stitch close to inner edge of elastic, stretching elastic to fit.



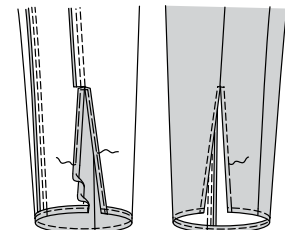
20. Turn elastic to inside, turning raw edge of fabric over elastic to encase. Stitch close to inner edge of elastic, stretching elastic to fit.



21. VIEW C:
Make a 5/8" (1.5cm) **NARROW HEM** on lower edge of pants.



22. VIEW D:
Open out fabric on slit opening edges below basting. Make a 5/8" (1.5cm) **NARROW HEM** on lower edge of pants. Baste remainder of **NARROW HEM** in place on slit edges. On outside, topstitch as basted; remove basting.





Congrats!

You've completed your sewing adventure

**SHARE
YOUR** LOOK



Post your pattern and tag us
[@simplicity_creative_group](#) and [#simplicitypatterns](#)
for a chance to be featured on our social media.

Look for more PDF patterns at [simplicity.com](https://www.simplicity.com)

Have a question or need help with your sewing project call us at
1-800-782-0323

McCall's
by **design**_{group}

McCall's ©2024 a division of IG Design Group Americas Inc. • Atlanta, GA 30342 USA www.thedesigngroup.com • All Rights Reserved. www.mccall.com • Made in the U.S.A. Fabriqué aux États-Unis.

To be used for individual private home use only and not for commercial or manufacturing purposes. • A usage privé seulement et non à des fins commerciales ou de production en série. • Para uso privado solamente, no se puede utilizar con propósitos de comercialización o de producción en serie.