

McCall's

M8454



Designed and
printed in USA

Average

MISSES' ROMPER

Suggested Fabrics: Cotton Blends, Crepes, Poplin, Stretch Wovens. **Interfacing:** Lightweight Fusible.

Notions: A,B,C: One 9" (23cm) invisible zipper (cut to fit). **Also for A:** Two 1" (2.5cm) D-Rings. **Also for B,C:** One swivel hook clasp, one 1" (2.5cm) D-Ring. **Also for C:** ¾ yd. (0.8m) of ¾" (1cm) elastic.

Sizes	4	6	8	10	12	14	16	18	20	22
European	30	32	34	36	38	40	42	44	46	48

BODY MEASUREMENTS: Select pattern size based on body measurements

Bust	29½	30½	31½	32½	34	36	38	40	42	44	Ins.
Waist	22	23	24	25	26½	28	30	32	34	37	"
Hip-9" below waist	31½	32½	33½	34½	36	38	40	42	44	46	"
Back-neck to waist	15¼	15½	15¾	16	16¼	16½	16¾	17	17¼	17½	"

Romper A	45**	2¼	2¼	2¼	2¼	2¼	2¼	2½	3¼	3¼	Yds.
	60**	2	2½	2½	2½	2½	2½	2½	2½	2½	"
Interfacing	20"	¾	¾	¾	¾	¾	1	1	1	1	"
Romper B	45**	2½	2½	2½	2½	2½	2½	3½	3½	3½	Yds.
	60**	2	2½	2½	2½	2½	2½	2½	2½	2½	"
Interfacing	20"	1½	1¼	1¼	1¼	1¼	1¼	1¼	1¼	1¼	"
Romper C	45**	3	3½	3½	3½	3½	3½	3½	3½	3½	Yds.
	60**	2½	2½	2½	2½	2½	2½	2½	2½	2½	"
Interfacing	20"	1¼	1¼	1¼	1¼	1¼	1¼	1½	1½	1½	"

FINISHED GARMENT MEASUREMENTS (Includes Design and Wearing Ease)

A,B,C Bust	33	34	35	36	37½	39½	41½	43½	45½	47½	Ins.
A,B,C Waist	24	25	26	27	28½	30½	32½	34½	36½	38½	"
A,B,C Hip	35	36	37	38	39½	41½	43½	45½	47½	49½	"
Width, each leg											
Romper A,B,C	23	24	25	26	27	28	29	30	31	32	Ins.
Finished back length from base of neck											
Romper A,B,C	31½	32	32½	33	33½	34	34½	35	35½	36	Ins.

*with nap **without nap

Moins Facile

BARBOTEUSE POUR JEUNES FEMMES

Tissus Conseillés: Cotonnades, Crêpes, Popeline, Tissus tissés extensibles. **Entoilage:** Thermocollant léger.

Mercurie: A,B,C: 1 fermeture à glissière invisible de 23cm (coupée pour ajuster). **Aussi pour A:** 2 anneaux D de 2.5cm. **Aussi pour B,C:** 1 fermoir à crochet pivotant, 1 anneau D de 2.5cm. **Aussi pour C:** 0.8m d'élastique de 1cm.

Tailles	4	6	8	10	12	14	16	18	20	22
Françaises	32	34	36	38	40	42	44	46	48	50
Européen	30	32	34	36	38	40	42	44	46	48

MESURES DU CORPS: Choisissez la taille du patron basée sur les mesures du corps

Poitrine	75	78	80	83	87	92	97	102	107	112	cm
Taille	56	58	61	64	67	71	76	81	87	94	"
Hanches (23cm au-dessous de la taille)											
	80	83	85	88	92	97	102	107	112	117	cm
Dos du cou à la taille	39	39.5	40	40.5	41.5	42	42.5	43	44	44.5	"

Barboteuse A	115cm*	2.1	2.1	2.1	2.5	2.5	2.5	2.5	2.6	2.9	3.0	m
	150cm*	1.8	1.8	1.9	1.9	2.1	2.1	2.1	2.2	2.2	2.2	"
Entoilage	51cm	0.8	0.8	0.8	0.8	0.8	0.8	0.8	0.8	0.8	0.8	"
Barboteuse B	115cm*	2.4	2.4	2.5	2.5	2.6	2.6	3.0	3.1	3.1	3.2	m
	150cm*	1.8	1.8	1.9	1.9	1.9	2.1	2.2	2.2	2.3	2.4	"
Entoilage	51cm	1.0	1.0	1.1	1.1	1.1	1.1	1.1	1.1	1.1	1.1	"
Barboteuse C	115cm*	2.7	2.9	2.9	3.0	3.0	3.1	3.3	3.3	3.3	3.4	m
	150cm*	2.2	2.2	2.3	2.3	2.3	2.3	2.4	2.4	2.4	2.4	"
Entoilage	51cm	1.0	1.1	1.1	1.1	1.1	1.1	1.1	1.1	1.1	1.1	"

MESURES DES VÊTEMENTS FINI (Motif et aisance de port compris)

A,B,C Poitrine	84	86	89	91	95	100	105	110	116	121	cm
A,B,C Taille	61	64	66	69	72	77	83	88	93	98	"
A,B,C Hanches	89	91	94	97	100	105	110	116	121	126	"
Largeur, chaque jambe											
Romper A,B,C	58	61	64	66	69	71	74	76	79	81	cm
Longueur finie – dos, votre nuque à l'ourlet											
Romper A,B,C	80	81	83	84	85	86	88	89	90	91	cm

*avec sens **sans sens



A



B



C



A



C

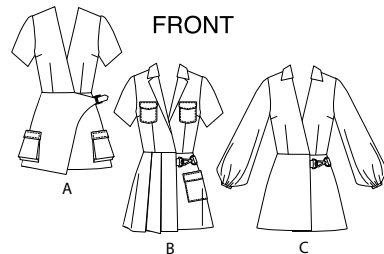
M8454

Page 1 of 4

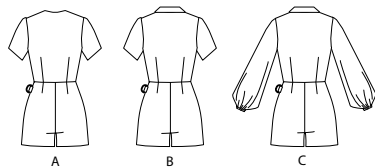
McCall's®

English

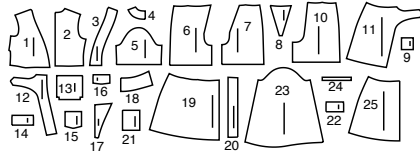
1-800-782-0323



BACK

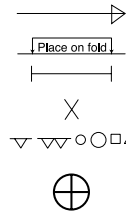


25 PATTERN PIECES



- | | |
|---------------------------|-----------------------------|
| 1 Bodice Front-A,B,C | 14 Flap-A |
| 2 Bodice Back-A,B,C | 15 Upper Pocket-B |
| 3 Front Facing-A,B,C | 16 Upper Flap-B |
| 4 Back Facing-A,B,C | 17 Lapel-B |
| 5 Sleeve-A,B | 18 Collar-B,C |
| 6 Right Lower Front-A,B,C | 19 Front Overlay-B |
| 7 Left Lower Front-A,B,C | 20 Front Overlay Facing-B,C |
| 8 Left Fly-A,B,C | 21 Lower Pocket-B |
| 9 Tab-A,B,C | 22 Lower Flap-B |
| 10 Lower Back-A,B,C | 23 Sleeve-C |
| 11 Front Overlay-A | 24 Guide for Elastic-C |
| 12 Front Overlay Facing-A | 25 Front Overlay-C |
| 13 Pocket-A | |

PATTERN MARKINGS



GRAINLINE: Place on straight grain of fabric, parallel to selvage or fold.

FOLDLINE: Place line on fold of fabric.

BUTTONHOLE MARKING: Indicates exact length and placement of buttonholes.

BUTTON MARKING: Indicates button placement.

NOTCHES AND SYMBOLS: For matching seams and construction details.

Indicates the Bustline, Waistline, Hip and/or Biceps. Measurements refer to circumference of Finished Garment (Body Measurement + Wearing Ease + Design Ease). Adjust pattern if necessary. The measurement excludes pleats, tucks, darts and seam allowances.

SEAM ALLOWANCE: 5/8" (1.5cm) included unless otherwise indicated, but not printed on tissue.

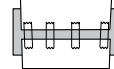
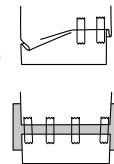
ADJUST IF NECESSARY

Lengthen or Shorten at adjustment lines (==) or where indicated on pattern. If substantial length is added, you may need to purchase additional fabric.

TO SHORTEN: Crease along adjustment line. Make a fold half the amount needed. Tape in place.

TO LENGTHEN: Slash between adjustment lines. Spread amount as needed, keeping edges parallel. Tape over paper.

When Alteration lines are not on tissue, lengthen or shorten at lower edge.



CUTTING AND MARKING

SHRINK FABRIC if not labeled pre-shrunk. Press.

CIRCLE LAYOUT for View, Size, Fabric Width.

Use **WITH NAP** layout for fabrics with one-way designs, nap, pile or surface shading. Because most knits have surface shading, a with nap layout is used.

For **DOUBLE THICKNESS (WITH FOLD)** - fold fabric with right sides together.

*** DOUBLE THICKNESS (WITHOUT FOLD)** - For fabrics with nap, fold fabric crosswise, right sides together. Mark as shown. Cut along crosswise fold of fabric (A). Turn upper layer 180° so arrows go in same direction and place over lower layer, right sides together (B).

For **SINGLE THICKNESS** - place fabric right side up. (For Fur Pile fabrics, place pile side down.)

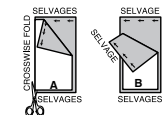
★ Cut other pieces first, allowing enough fabric to cut this piece. Open fabric. For "Cut 1" pieces, cut piece once on single layer of fabric with piece face up on right side of fabric.

Pattern may have cutting lines for several sizes. Select the proper cutting line or pattern pieces for your size.

Before **CUTTING** place all pieces on fabric according to layout. Pin. (**Layouts show approximate position of pattern pieces; position may vary according to your pattern size.**) Cut **ACCURATELY**, cutting notches outward.

Before removing pattern, **TRANSFER MARKINGS** and lines of construction to Wrong Side of fabric, using the Pin and Chalk Pencil method or Tracing Paper and Dressmaker Wheel. Markings needed on right side of fabric should be thread traced.

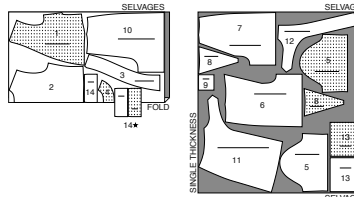
NOTE: Broken-line boxes (a! b! c!) in layouts represent pieces cut by measurements provided.



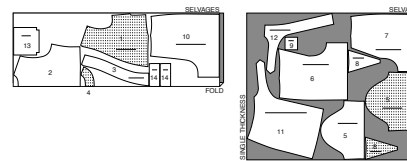
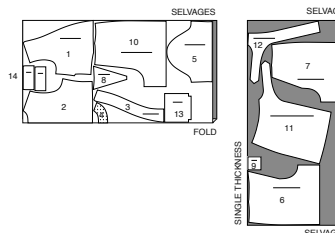
CUTTING LAYOUTS

ROMPER A

use pieces: 1 2 3 4 5 6 7 8 9 10 11 12 13 14

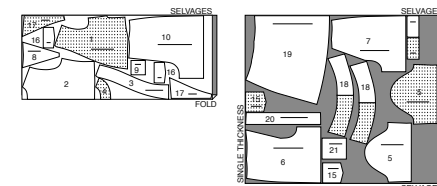
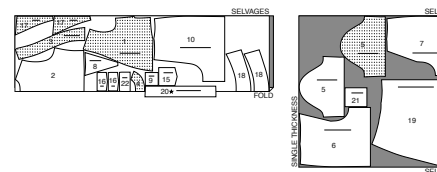
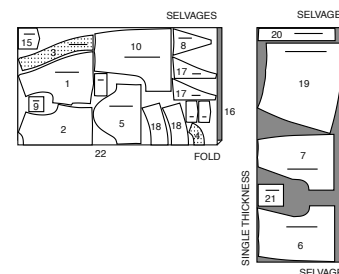
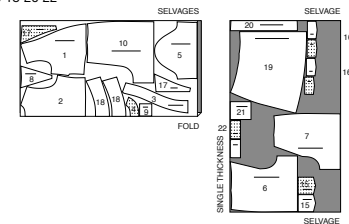
45" (115 cm)
with nap
all sizes

45" (115 cm) with nap / sizes 10 12 14 16 18 20 22

60" (150 cm)
with nap
all sizes

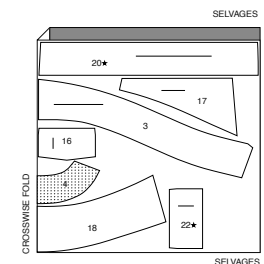
ROMPER B

use pieces: 1 2 3 4 5 6 7 8 9 10 15 16 17 18 19 20 21 22

45" (115 cm)
with nap
sizes 4 6 8 10 12 1445" (115 cm)
with nap
sizes 16 18 20 2260" (150 cm)
with nap
sizes 4 6 8 10 1260" (150 cm) with nap
sizes 14 16 18 20 22

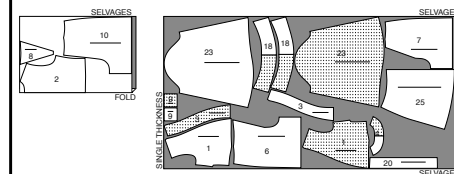
INTERFACING B (Facings and Flaps)

use pieces: 3 4 16 17 18 20 22

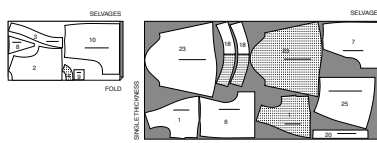
20" (51 cm)
without nap
all sizes

ROMPER C

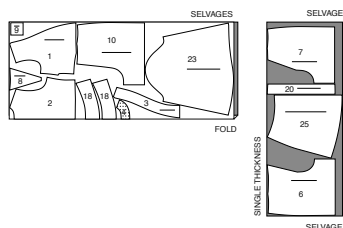
use pieces: 1 2 3 4 6 7 8 9 10 18 20 23 25

45" (115 cm)
with nap
sizes 4 6 8 10 12 14

45" (115 cm)
with nap
sizes 16 18 20 22



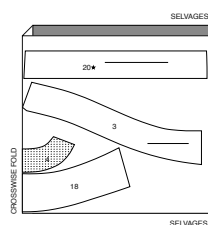
60" (150 cm)
with nap
all sizes



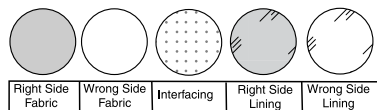
INTERFACING C (Facings)

use pieces: 3 4 18 20

20" (51 cm)
without nap
all sizes

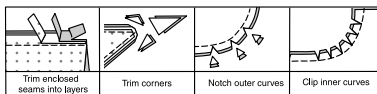


SEWING INFORMATION FABRIC KEY



SEAM ALLOWANCES

Use 1/4" (6mm) seam allowances unless otherwise indicated.



PIN AND FIT

Pin or baste seams, **RIGHT SIDE TOGETHER**, matching notches. Fit garment before stitching major seams.

PRESS

Press seam allowances flat; then open unless otherwise stated. Clip where necessary so they lie flat.

GLOSSARY

Sewing methods in **BOLD TYPE** have Sewing Tutorial Video available. Scan **QR CODE** to watch videos:

BLIND STITCH - see **Hand Stitching**: "how to sew a blind stitch" video.

DART - see **Darts**: "sewing flat dart" video.

EASE/GATHER - see **Gathering**: "sewing two row gathers" video.

EDGESTITCH - see **Machine Stitches**: "how to edgestitch" video.

FINISH - see **Seams**: "how to finish seam allowances" video.

SLIPSTITCH - see - see **Hand Stitches**: "how to slipstitch" video.

STAYSTITCH - see **Machine Stitches**: "how to do staystitching" video.

TACK - see **Hand Stitches**: "how to tack" video.

TOPSTITCH - see **Machine Stitches**: "how to topstitch" video.

TRIM - see **How to Sew**: Trim, Clip, and Layer Seams" video.

UNDERSTITCH - see **Machine Stitches**: "how to understitch" video.

SLEEVE - see **Armholes/Sleeves**: "sewing a set-in sleeve" video.

SEWING TUTORIALS

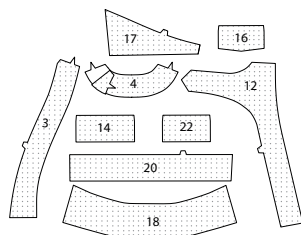


Build your skills viewing short, easy-to-follow videos at simplicity.com/sewingtutorials

ROMPER A, B, C

INTERFACING

1. Apply interfacing to wrong side of matching fabric sections, following manufacturer's directions.

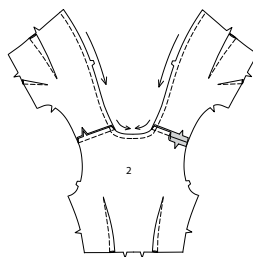


BODICE FRONT AND BACK

2. Make **DARTS** BODICE FRONT (1) sections; press bust dart down and waist dart toward center.



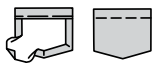
3. Make **DARTS** in BODICE BACK (2); press toward center. Stitch bodice back to front sections at shoulders. **STAYSTITCH** front and neck edges in direction of arrows.



4. **VIEW B**: Turn upper edge of each **UPPER POCKET** (15) section to outside along foldline, forming facing; turn in 1/4" (6mm) on inner raw edge. Stitch ends. Trim seam allowance in facing area to 1/4" (6mm).



5. Turn upper edge of pocket to inside, turning in remaining seam allowances, diagonally folding corners. Press. Baste close to inner edge of facing. On outside, **TOPSTITCH** along basting.



6. Pin pockets to fronts, placing upper corners at large dots. **EDGESTITCH** side and lower edges.



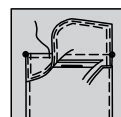
7. Stitch facing to **UPPPER FLAP** (16), leaving edge with small dots open. **TRIM** seam and corners.



8. Turn flap; press. Machine-baste 5/8" (1.5cm) from raw edge. **EDGESTITCH** and **TOPSTITCH** finished edges.



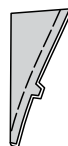
9. On **OUTSIDE**, pin flap (interfaced side) to front, placing basting along flap line, matching small dots, as shown. Stitch along basting. **TRIM** close to stitching. Turn flap down; press. **TOPSTITCH** upper edge, encasing seam.



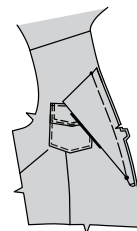
10. Stitch facing to **LAPEL** (17), leaving notched edges open. **TRIM** seam and corners. **UNDERSTITCH** facing as far as possible.



11. Turn lapel; press. Baste raw edges together.

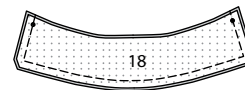


12. On outside, pin lapel to front, matching small and large dots, clipping neck edge of lapel where necessary; baste.



13. VIEWS B, C:

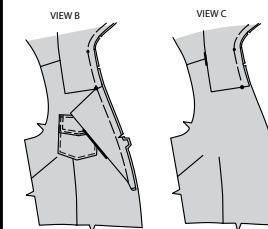
Stitch facing to **COLLAR** (18), leaving edges with small and large dots open. **TRIM** seam and corners. **UNDERSTITCH** facing as far as possible.



14. Turn collar; press. Baste raw edges together.

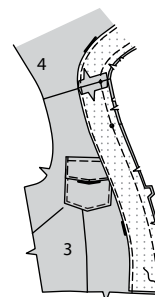


15. On outside, pin collar to neck edge of bodice (over upper edges of lapels for View B), matching centers back and large dots, placing small dots at shoulder seams and clipping neck edge of bodice where necessary. Baste.



16. VIEWS A, B, C:

Stitch **FRONT FACING** (3) sections to **BACK FACING** (4), at shoulders. **FINISH** outer unnotched edge. With right sides together, pin facing to neck and front edges, matching centers, shoulder seams, and small dots. Stitch. **TRIM** seam. **UNDERSTITCH** facing to within 1-1/2" (3.8cm) above small dots.



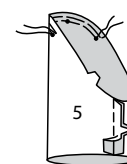
17. Turn facing to inside; press. Stitch back to fronts at sides.



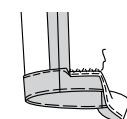
SLEEVES

18. SLEEVE A, B:

EASESTITCH upper edge of **SLEEVE** (5) between outer small dots. Stitch sleeve seam.

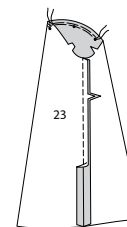


19. Turn up 1-1/4" (3.2cm) hem. **FINISH** raw edge. Baste close to fold. **BLINDSTITCH** hem. Press.

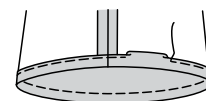


20. SLEEVE C:

EASESTITCH upper edge of **SLEEVE** (23) between outer small dots. Stitch sleeve seam.

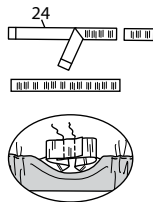


21. To form casing, turn lower edge of sleeve a generous 3/4" (2mm) to inside. Press. Turn under 1/4" (6mm) on raw edge and stitch in place, leaving an opening to insert elastic.

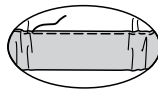


22. Cut two pieces of elastic, each using GUIDE FOR ELASTIC (24).

Insert elastic through casing. Lap ends. Stitch ends of elastic securely.

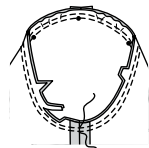


23. Stitch opening in casing closed, stretching elastic while stitching.



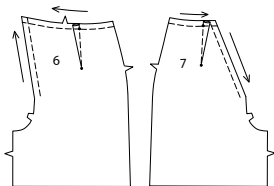
24. SLEEVE A, B, C:

Pin **SLEEVE** into armhole, having inner small dot at shoulder seam, matching notches, and remaining small dots. Adjust ease. Stitch. Stitch again 1/8" (3mm) away. Trim.



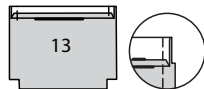
LOWER FRONT

25. **STAYSTITCH** upper edge of **RIGHT LOWER FRONT** (6) and front edge above large dot. Make **DART**; press toward center. **STAYSTITCH** and make **DART** in **LEFT LOWER FRONT** (7) in same manner.

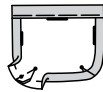


26. VIEW A:

Turn upper edge of each **POCKET** (13) section to outside along foldline, forming facing; turn in 1/4" (6mm) raw edge. Stitch ends. Trim seam allowance in facing area to 1/4" (6mm).



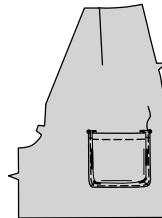
27. Turn upper edge of pocket to inside, turning in remaining seam allowances. Baste close to inner edge of facing. Make **DARTS** in lower edge matching small dots and stitching lines.



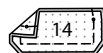
28. On outside, **TOPSTITCH** along basting. Fold pocket along remaining fold lines; press, setting in a crease.



29. On **OUTSIDE**, pin pocket to left lower front along pocket line, having outer pressed edges along pocket line, matching large dots. **EDGESEW** side and lower edges. Set aside remaining pocket for overlay.



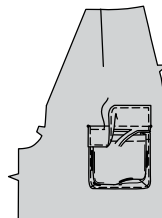
30. Stitch facing to interfaced **FLAP** (14), leaving edge with small dots open. **TRIM** seam and corners.



31. Turn flap; press. Machine-baste 5/8" (1.5cm) from raw edge. **TOPSTITCH** finished edges.

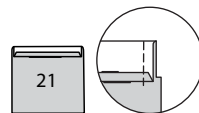


32. On **OUTSIDE**, pin flap (interfaced side) to left lower front, placing basting along flap line, matching small dots, as shown. Stitch along basting. **TRIM** close to stitching. Turn flap down; press. **TOPSTITCH** upper edge, encasing seam.

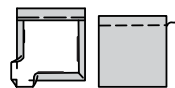


33. VIEW B:

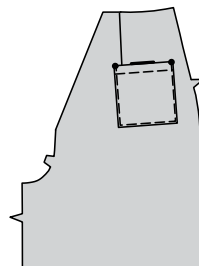
Turn upper edge of each **LOWER POCKET** (21) section to outside along foldline, forming facing; turn under 1/4" (6mm) on inner raw edge. Stitch ends. **TRIM** seam allowance in facing area to 1/4" (6mm).



34. Turn upper edge of pocket to inside, turning in remaining seam allowances, diagonally folding corners. Press. Baste close to inner edge of facing. On outside, **TOPSTITCH** along basting.



35. On **OUTSIDE**, pin pocket to left lower front, placing corners at large dots. **EDGESEW** side and lower edges.



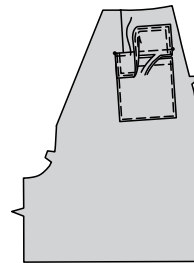
36. Stitch facing to **UPPER FLAP** (22), leaving edge with small dots open. **TRIM** seam and corners.



37. Turn flap; press. Machine-baste 5/8" (1.5cm) from raw edge. **EDGESEW** and **TOP-STITCH** finished edges.



38. On **OUTSIDE**, pin flap (interfaced side) to left lower front, placing basting along flap line, matching small dots, as shown. Stitch along basting. Trim close to stitching. Turn flap down; press. **TOPSTITCH** upper edge, encasing seam.



TAB

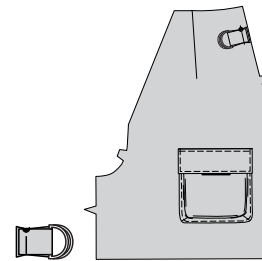
NOTE: **View A** has one tab with attached D-rings. **Views B and C** have two tabs; one with attached D-ring and one with attached swivel hook.

39. Fold each **TAB** (9) along foldline, right sides together. Stitch notched edges, leaving ends open. **TRIM** seam. Turn tab; press. Baste raw edges together.



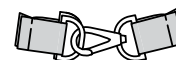
40. VIEW A:

Slip tab through two D-rings, having ends even; baste. On outside, baste tab to side edge of left front, matching fold edge at large dots.

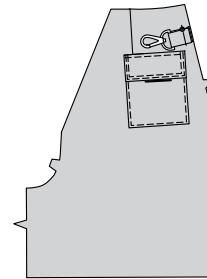


41. VIEWS B, C:

Slip one tab through D-ring, having ends even; baste. Slip remaining tab through ring of swivel hook and baste in same manner; set aside for overlay.



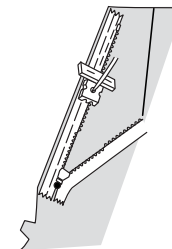
42. On outside, baste tab with swivel hook to side edge of left front, matching dot.



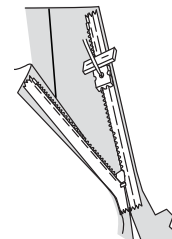
ZIPPER

NOTE: The zipper is longer than the zipper opening and will be adjusted after the zipper is inserted. Stitch the invisible zipper using an invisible zipper foot.

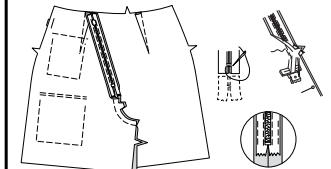
43. Open zipper press tape flat on **WRONG** side, unrolling coils. Do not press coils. (Use a low iron setting.) On outside, pin **RIGHT** side of zipper face down on left lower front zipper opening. Have the coil along the seam line, the tape within the seam allowance and the top stop 3/4" (2cm) below upper edge, as shown. Position zipper foot at top of zipper with **RIGHT** groove of foot over coil. Stitch along tape to large dot.



44. Pin remaining half of zipper to zipper opening on right lower front zipper opening in same manner. Make sure that upper and lower edges of fronts are even. Hand-baste along the center of the tape. Position zipper foot at the top of the zipper with left groove over the coil. Stitch along tape to the notch.

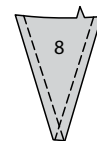


45. Close zipper and check that it is invisible from the outside. Pull free ends of zipper tape away from seam allowance. Pin remaining front seam together below zipper, matching notches, and large dots. Position zipper foot all the way to the left so the needle goes down through the outer notch of the foot. Start stitching seam 1/4" (6mm) above lowest stitch and slightly to the left, stitching to notch. To shorten zipper, using a strong thread, hand-sew a few small stitching across ends of coil at opening. Trim away lower end of zipper to 5/8" (1cm).

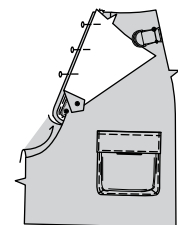


FLY

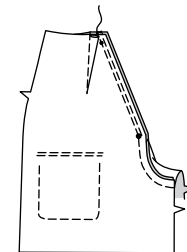
46. STAYSTITCH side edges of **LEFT FLY** (8) sections. One section will be used as the fly; the remaining section will be used as the facing.



47. Roll zipper teeth on left lower front away from raw edge. With right sides together, pin fly to opening edge (sandwiching zipper), matching large dots.

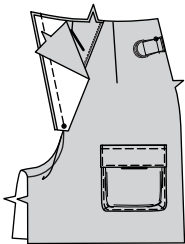


48. Using a regular adjustable zipper foot, stitch right alongside zipper stitching to large dot, being careful not to catch in right front. **TRIM** seam.

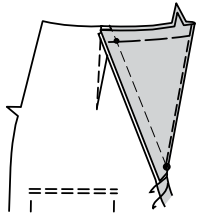


49. Press fly out, turning zipper teeth toward fly and seam allowances towards left lower front. With right sides together and raw edges even, pin facing to fly along outer long edges, matching small and large dots. Stitch to large dot, being careful not to catch in zipper or lower fronts.

TRIM seam.
UNDERSTITCH facing.



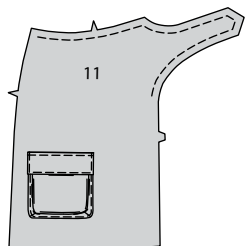
50. Turn facing to inside; press. Baste upper raw edges of facing and fly together, matching small and large dots, having raw edge even.



OVERLAY

51. VIEW A:

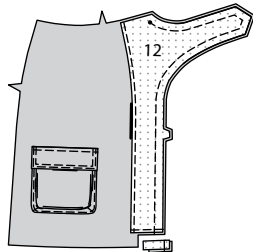
STAYSTITCH upper and curved edges of FRONT OVERLAY (11), as shown. On outside, stitch remaining pocket and flap to overlay in same manner as for left lower front.



52. FINISH long unnotched edge of FRONT OVERLAY FACING (12). Pin facing to front edge of overlay, matching notches, and small dots.

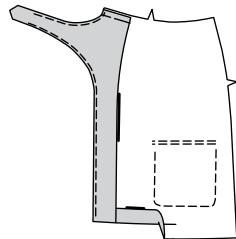
Stitch extension and front edges below small dot. Stitch across facing exactly 1-1/4" (3.2cm) above lower edge.

TRIM seam, trimming lower edges, as shown.



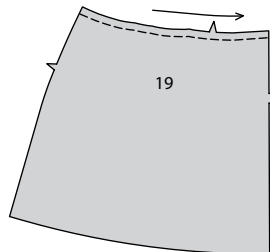
53. UNDERSTITCH facing as far as possible, as shown.

Turn facing to inside; press. Baste upper raw edges together.

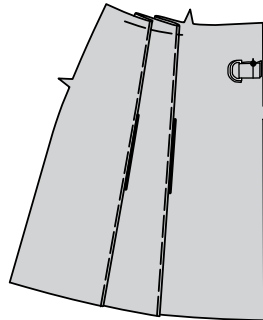


54. VIEW B:

STAYSTITCH upper edge of FRONT OVERLAY (19).

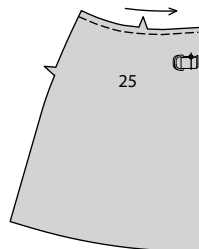


55. To make pleats in front overlay, on outside, fold along solid lines. Bring folds to broken lines. Baste close to fold. Press. Baste tab with D-ring to front edge, matching large dots. Remove fold basting before hemming romper.



56. VIEW C:

STAYSTITCH upper edge of FRONT OVERLAY (25). Baste tab with D-ring to front edge, matching large dots.

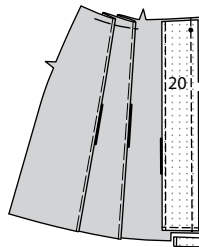


57. VIEWS B, C:

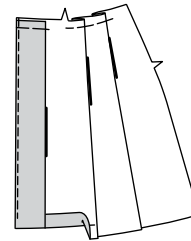
FINISH long unnotched edge of FRONT OVERLAY FACING (20). Pin facing to front edge of overlay, matching notches, and small dots.

Stitch front edges below small dot. Stitch across facing exactly 1-1/4" (3.2cm) above lower edge.

TRIM seam, trimming lower edges, as shown.



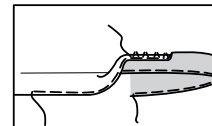
58. UNDERSTITCH facing as far as possible. Turn facing to inside; press. Baste upper raw edges together.



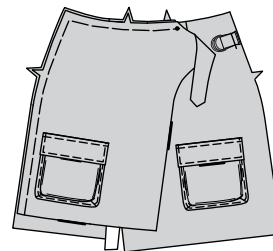
59. VIEWS A, B, C:

Turn up 1-1/4" (3.2cm) hem on lower edge of overlay.

FINISH raw edge. Baste close to fold. **BLINDSTICH** hem. Press.

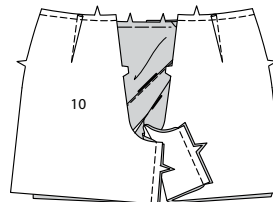


60. With right sides facing up and raw edges even, pin overlay to lower front, having hemmed edge exactly 1-1/4" (3.2cm) above lower raw edge of front. Baste raw edges together to small dot.



BACK AND SIDE SEAMS

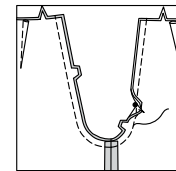
61. STAYSTITCH upper edge of BACK (10) sections. Stitch backs to fronts at inner leg seams.



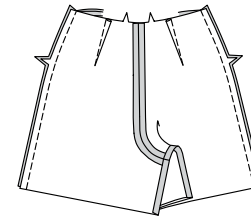
62. Stitch center seam connecting to previous stitching, matching inner leg seams and notches, keeping free edges of overlay out of the way.

REINFORCE seam.

If you prefer, stitch again 1/4" (6mm) from first stitching; trim close to second stitching.

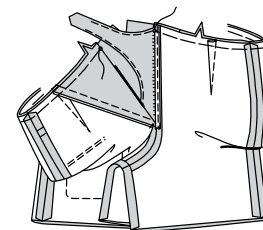


63. Stitch back to front at sides, keeping free edges of overlay out of the way.

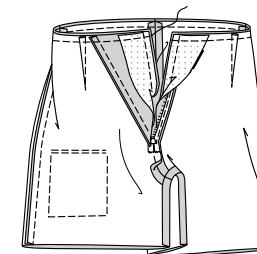


BODICE SEAM AND FACING

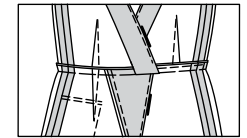
64. Open out bodice facings. Pin shorts to lower edge of bodice, matching centers, seams, and small dots. Baste seam between small dots, keeping free edges of overlay out of the way.



65. Turn front edges of facing over wrong side of shorts at small dots; pin. Stitch entire waist seam. **TRIM** seam.

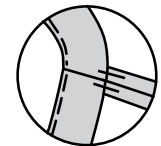


66. Turn facings to inside, press.

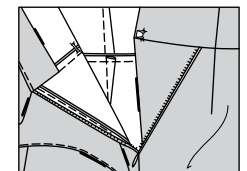


FINISHING

67. TACK facing to bodice shoulder seams.

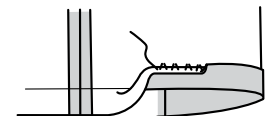


68. On outside, sew hook half of closure to left front edge just above waist seam, as shown. Close zipper and lap right front over left matching centers; mark position for bar end of closure on inside. Sew bar half of closure at marking.



69. Turn up 1-1/4" (3.2cm) hem on lower edge of shorts.

FINISH raw edge. Baste close to fold. **BLINDSTICH** hem. Press.





Congrats!

You've completed your sewing adventure

SHARE YOUR LOOK



Post your pattern and tag us
[@simplicity_creative_group](#) and [#simplicitypatterns](#)
for a chance to be featured on our social media.

Look for more PDF patterns at [simplicity.com](#)

Have a question or need help with your sewing project call us at
1-800-782-0323

McCall's
by **design**_{group}

McCall's ©2024 a division of IG Design Group Americas Inc. • Atlanta, GA 30342 USA [www.thedesigngroup.com](#) • All Rights Reserved. [www.mccall.com](#) • Made in the U.S.A. Fabriqué aux États-Unis.

To be used for individual private home use only and not for commercial or manufacturing purposes. • A usage privé seulement et non à des fins commerciales ou de production en série. • Para uso privado solamente, no se puede utilizar con propósitos de comercialización o de producción en serie.