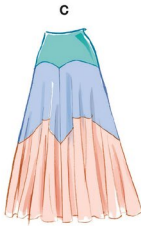


McCall's

M8453



Designed and printed in USA

MISSES' SKIRT IN TWO LENGTHS

Suggested Fabrics: Challis, Charmeuse, Crepe de Chine, Crepes. **Interfacing:** Lightweight Fusible.

Notions: A, B, C: One 7" (18cm) invisible zipper. **Also for B:** ¾ yd. (0.7m) of elastic bridal looping trim, ¾" (1cm) shank buttons (number of buttons depends on loop spacing and finished length).

Sizes	8	10	12	14	16	18	20	22	24	26
European	34	36	38	40	42	44	46	48	50	52

BODY MEASUREMENTS: Select pattern size based on body measurements

Bust	31½	32½	34	36	38	40	42	44	46	48	Ins.
Waist	24	25	26½	28	30	32	34	37	39	41	"
Hip-9" below waist	33½	34½	36	38	40	42	44	46	48	50	"
Back-neck to waist	15¾	16	16¼	16½	16¾	17	17¼	17½	17¾	18	"

Interfacing A, B, C 20" ⅝ ⅝ ⅝ ⅝ ¾ ¾ ⅞ ⅞ 1 1⅞ Yds.

Skirt A 54"* 1¾ 1¾ 1¾ 1¾ 2 2 2 2 2 2 Yds.

Skirt B 54"* 5⅞ 5⅞ 6 6 6⅞ 6⅞ 6¼ 6¼ 6¼ 6¼ Yds.

Skirt C 54"* 3¼ 3¼ 3¼ 3¼ 3¼ 3¼ 3¼ 4 4 4 Yds.

Contrast 1 (Upper Front and Back, Front and Back Facings)

54"* ¾ ¾ ¾ ¾ ¾ ¾ ¾ ¾ ¾ ¾ Yds.

Contrast 2 (Middle Front and Back)

54"* 1⅞ 1⅞ 1⅞ 1⅞ 1⅞ 1⅞ 1⅞ 1¾ 1¾ Yds.

FINISHED GARMENT MEASUREMENTS (Includes Design and Wearing Ease)

A, B, C Waist 25½ 26½ 28 30 32 34 36 38 40 42 Ins.

Finished back length from waist

Skirt C 42 42 42 42 42 42 42 42 42 42 Ins.

*with nap **without nap

Average

JUPE EN DEUX LONGUEURS POUR JEUNES FEMMES

Tissu Conseillés: Challis, Charmeuse, Crêpe de chine, Crêpes. **Entoilage:** Thermocollant léger.

Mercerie: A, B, C: 1 fermeture à glissière invisible de 18cm. **Aussi pour B:** fermeture à bouton de boucle de cordon élastique de 0.7m, boutons de tige de 1cm (le nombre de boutons dépend de l'espacement des boucles et de la longueur finie).

Tailles	8	10	12	14	16	18	20	22	24	26
Françaises	36	38	40	42	44	46	48	50	52	54
Européen	34	36	38	40	42	44	46	48	50	52

MESURES DU CORPS: Choisissez la taille du patron basée sur les mesures du corps

Poitrine 80 83 87 92 97 102 107 112 117 122 cm

Taille 61 64 67 71 76 81 87 94 99 104 "

Hanches (23cm au-dessous de la taille)

85 88 92 97 102 107 112 117 122 127 cm

Dos du cou à la taille 40 40.5 41.5 42 42.5 43 44 44.5 45 46 "

Entoilage A, B, C 51cm 0.6 0.6 0.6 0.6 0.7 0.7 0.8 0.8 0.9 1.0 m

Jupe A 140cm* 1.6 1.6 1.7 1.7 1.8 1.8 1.8 1.8 1.8 1.8 m

Jupe B 140cm* 5.4 5.4 5.5 5.5 5.6 5.6 5.7 5.7 5.7 5.8 m

Jupe C 140cm* 3.4 3.4 3.4 3.4 3.5 3.5 3.5 3.5 3.7 3.7 m

Contraste 1 (Devant et dos supérieur, parementure du devant et dos)

140cm* 0.6 0.7 0.7 0.7 0.7 0.7 0.8 0.8 0.8 0.8 m

Contraste 2 (Milieu devant et dos)

140cm* 1.5 1.5 1.5 1.5 1.5 1.5 1.5 1.5 1.5 1.6 m

MESURES DES VÊTEMENTS FINI (Motif et aisance de port compris)

A, B, C Taille 65 67 71 76 81 86 91 97 102 107 m

Longueur finie – dos, taille à l'ourlet

Jupe C 107 107 107 107 107 107 107 107 107 107 m

*avec sens **sans sens



A



B



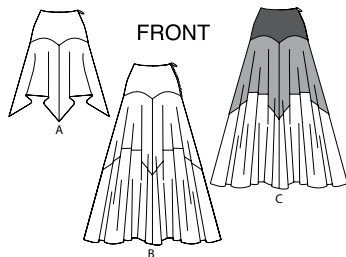
B



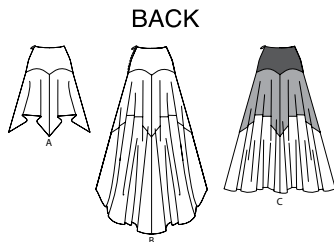
B



C



FRONT



BACK

PATTERN MARKINGS

GRAINLINE: Place on straight grain of fabric, parallel to selvage or fold.
FOLDLINE: Place line on fold of fabric.
BUTTONHOLE MARKING: Indicates exact length and placement of buttonholes.
BUTTON MARKING: Indicates button placement.
NOTCHES AND SYMBOLS: For matching seams and construction details.
 Indicates the Bustline, Waistline, Hip and/or Biceps. Measurements refer to circumference of Finished Garment (Body Measurement + Wearing Ease + Design Ease). Adjust pattern if necessary. The measurement excludes pleats, tucks, darts and seam allowances.
SEAM ALLOWANCE: 5/8" (1.5cm) included unless otherwise indicated, but not printed on tissue.

ADJUST IF NECESSARY

Lengthen or Shorten at adjustment lines (==) or where indicated on pattern. If substantial length is added, you may need to purchase additional fabric.
TO SHORTEN: Crease along adjustment line. Make a fold half the amount needed. Tape in place.
TO LENGTHEN: Slash between adjustment lines. Spread amount as needed, keeping edges parallel. Tape over paper.
 When Alteration lines are not on tissue, lengthen or shorten at lower edge.

CUTTING AND MARKING

SHRINK FABRIC if not labeled pre-shrunk. Press.
CIRCLE LAYOUT for View, Size, Fabric Width.
 Use **WITH NAP** layout for fabrics with one-way designs, nap, pile or surface shading. Because most knits have surface shading, a with nap layout is used.
 For **DOUBLE THICKNESS (WITH FOLD)** - fold fabric with right sides together.
*** DOUBLE THICKNESS (WITHOUT FOLD)** - For fabrics with nap, fold fabric crosswise, right sides together. Mark as shown. Cut along crosswise fold of fabric (A). Turn upper layer 180° so arrows go in same direction and place over lower layer, right sides together (B).
 For **SINGLE THICKNESS** - place fabric right side up. (For Fur Pile fabrics, place pile side down.)

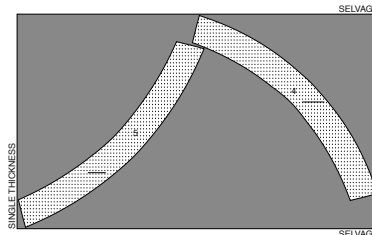
★ Cut other pieces first, allowing enough fabric to cut this piece. Open fabric. For "Cut 1" pieces, cut piece once on single layer of fabric with piece face up on right side of fabric.
 Pattern may have cutting lines for several sizes. Select the proper cutting line or pattern pieces for your size.
 Before **CUTTING** place all pieces on fabric according to layout. Pin. (Layouts show approximate position of pattern pieces; position may vary according to your pattern size.) Cut **ACCURATELY**, cutting notches outward.
 Before removing pattern, **TRANSFER MARKINGS** and lines of construction to Wrong Side of fabric, using the Pin and Chalk Pencil method or Tracing Paper and Dressmaker Wheel. Markings needed on right side of fabric should be thread traced.
NOTE: Broken-line boxes (a| b| c|) in layouts represent pieces cut by measurements provided.

CUTTING LAYOUTS

RIGHT SIDE OF PATTERN	WRONG SIDE OF PATTERN	RIGHT SIDE OF FABRIC	WRONG SIDE OF FABRIC
-----------------------	-----------------------	----------------------	----------------------

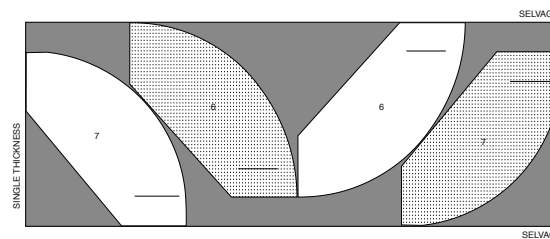
INTERFACING A,B,C

Use pieces: 4 5
 20" (51 cm)
 Without nap
 All sizes

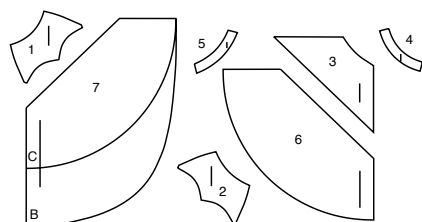


SKIRT C

Use pieces: 6 7
 54" (138 cm)
 With nap
 All sizes



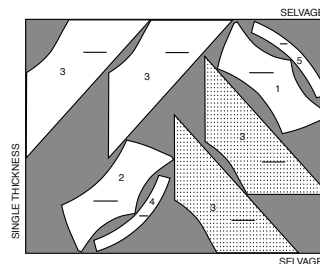
7 PATTERN PIECES



- 1 Upper Front-A,B,C
- 2 Upper Back-A,B,C
- 3 Middle Front and Back-A,B,C
- 4 Front Facing-A,B,C
- 5 Back Facing-A,B,C
- 6 Lower Front-B,C
- 7 Lower Back-B,C

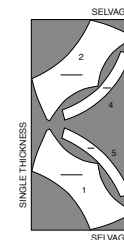
SKIRT A

Use pieces: 1 2 3 4 5
 54" (138 cm)
 With nap
 All sizes



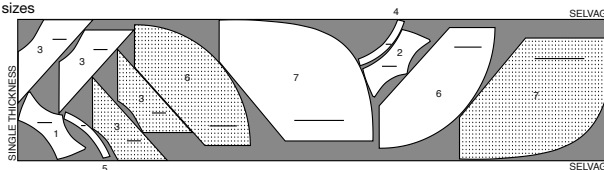
CONTRAST 1 (Upper Front and Back, Front Facing and Back Facing)

Use pieces: 1 2 4 5
 54" (138 cm)
 With nap
 All sizes



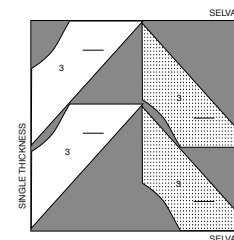
SKIRT B

Use pieces: 1 2 3 4 5 6 7
 54" (138 cm)
 With nap
 All sizes

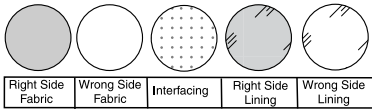


CONTRAST 2 (Middle Front and Back)

Use piece: 3
 54" (138 cm)
 With nap
 All sizes

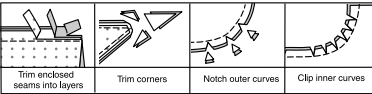


SEWING INFORMATION
FABRIC KEY



SEAM ALLOWANCES

Use 1/4" (6mm) seam allowances unless otherwise indicated.



PIN AND FIT

Pin or baste seams, **RIGHT SIDE TOGETHER**, matching notches. Fit garment before stitching major seams.

PRESS

Press seam allowances flat; then open unless otherwise stated. Clip where necessary so they lie flat.

GLOSSARY

Read **General Directions** on page 1 before you begin.

Sewing methods in **BOLD TYPE** have Sewing Tutorial Video available. Scan **QR CODE** to watch videos:

DESIGNER HEM - see [sewing a baby hem video](#)

INVISIBLE ZIPPER - see [sewing an invisible zipper video](#)

STAYSTITCH - see [how to do stay-stitching video](#)

UNDERSTITCH - see [how to understitch video](#)

FINISH - Stitch 1/4" (6mm) from raw edge and finish with one of the following: (1) Pink **OR** (2) Overcast **OR** (3) Turn in along stitching and stitch close to fold **OR** (4) Overlock.

OPTIONAL FOR HEMS: Apply Seam Binding.

PATTERN PIECES WILL BE IDENTIFIED BY NUMBERS THE FIRST TIME THEY ARE USED.

STITCH SEAMS WITH RIGHT SIDES TOGETHER UNLESS OTHERWISE STATED.

SEWING TUTORIALS



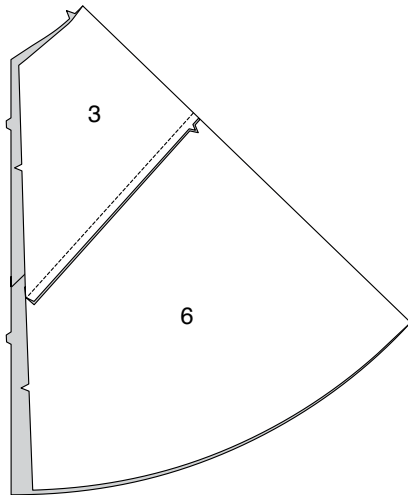
Build your skills viewing short, easy-to-follow videos at simplicity.com/sewingtutorials

SKIRT A, B, C

NOTE: Under each subheading, **view A** will be illustrated unless otherwise indicated.

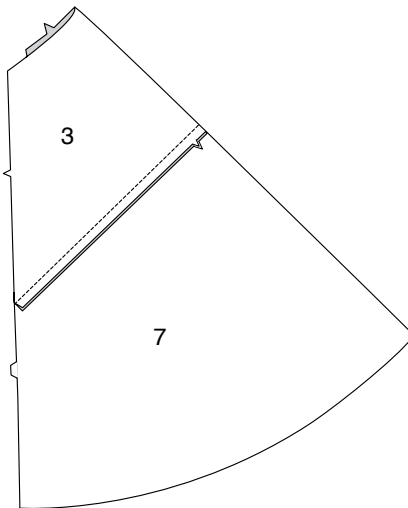
FRONT AND BACK

1. VIEW B, C- Pin LOWER FRONT (6) to MIDDLE FRONT AND BACK (3) sections. Press seam down.

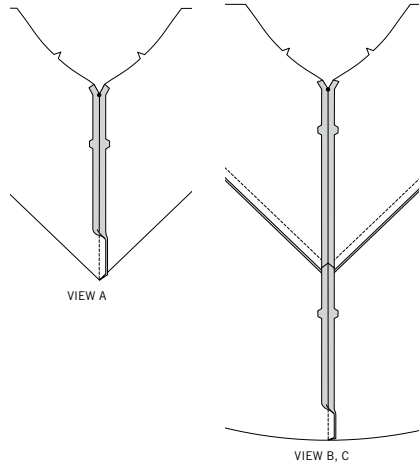


2. Pin LOWER BACK (7) to remaining middle front and back sections. Stitch. Press seam down.

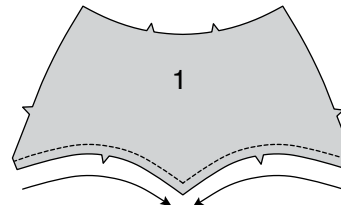
NOTE: Illustration shown for **View C**



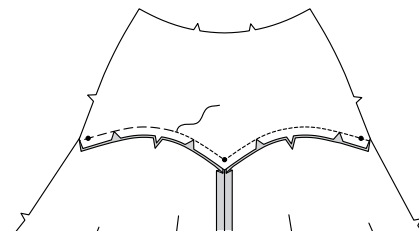
3. VIEW A, B, C- With right sides together, stitch center front seam of skirt sections ending at small dot.



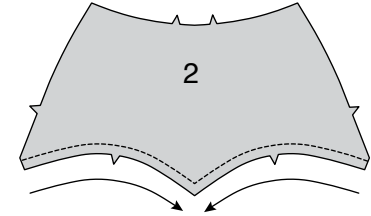
4. STAYSTITCH lower curved edges of UPPER FRONT (1) in direction of arrows.



5. With right sides together, pin middle front to lower edge of upper front, matching small dots and notches. Clip to stay-stitching if necessary. Baste. Stitch. Press seam down.

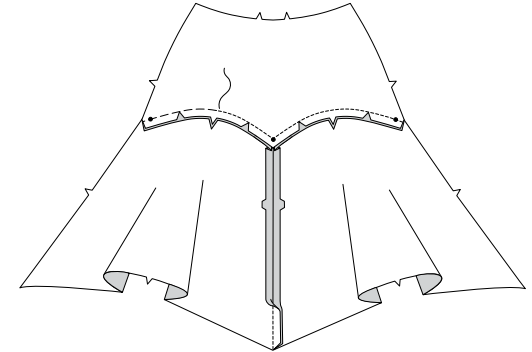


6. STAYSTITCH lower curved edges of UPPER BACK (2) in direction os arrows.

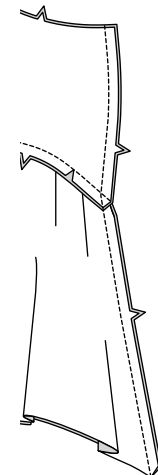


7. With right sides together, stitch center back seam of skirt and back sections.

Pin middle back to lower edge of upper back matching notches and small dots. Clip to stay-stitching if necessary. Baste. Stitch. Press seam down.

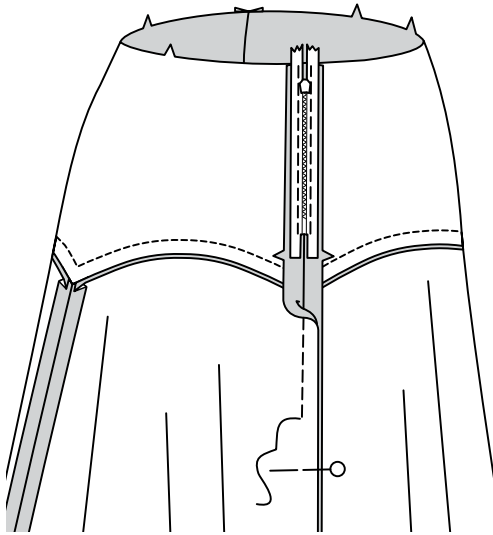


8. With right sides together, stitch front to back at right side seams.



INVISIBLE ZIPPER

9. Insert invisible zipper in left side seam, having top stop 3/4" (2cm) below raw edge. Stitch remainder of left side seam below zipper.

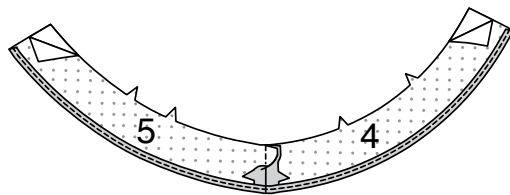


FRONT AND BACK FACING

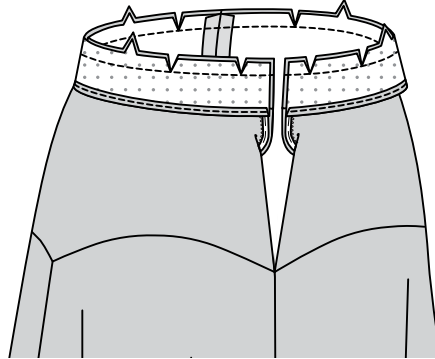
10. Apply fusible interfacing to wrong side of FRONT FACING (4) and BACK FACING (5), following manufacturer's directions.

Stitch right side seam of facing sections.

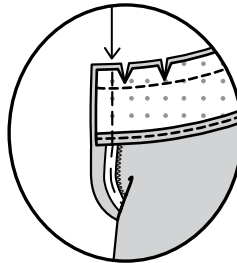
FINISH unnotched edge of facing.



11. Open out left side opening edges of skirt, rolling the zipper teeth away from the opening edge. With RIGHT sides together, pin facing to upper edge of skirt, matching centers and right side seam. Stitch upper edge. Trim seam; clip curves.

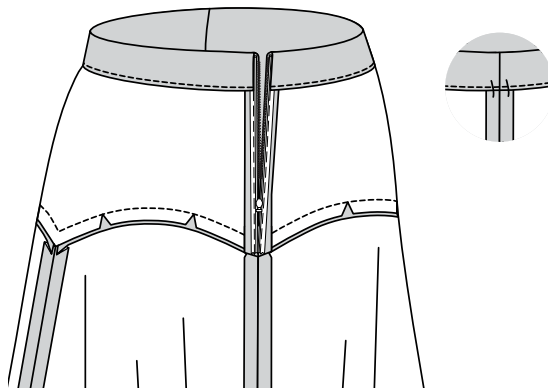


12. Pin back opening edges together. Using an adjustable zipper foot, stitch across facing 1/2" (1.3cm) from back edges, keeping zipper teeth free. Trim corners. Do not trim center back edges.



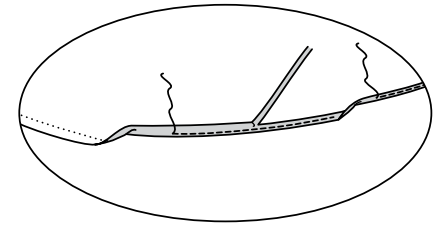
13. Turn facing and back edges to inside, rolling zipper teeth back in place; press.

To keep the facing from rolling to the outside, secure it at the seam allowances by tacking it by hand.



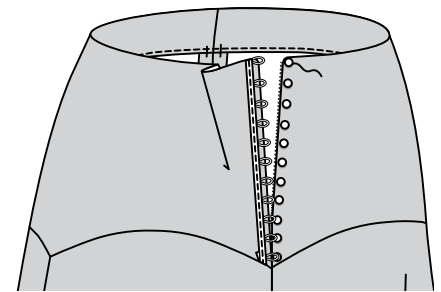
FINISHING

14. Finish lower edge of skirt using a DESIGNER HEM.



15. VIEW B- Cut a piece of elastic bridal loop the length of zipper opening plus 1/2" (1.3cm). On outside, pin elastic loop to front left side seam, having edge of tape 1/4" (6mm) away from finished edge. Turn under ends of trim. Stitch along center of elastic.

Hand-sew buttons to back opening edge, under loops, as shown.





Congrats!

You've completed your sewing adventure

**SHARE
YOUR** LOOK



Post your pattern and tag us
[@simplicity_creative_group](#) and [#simplicitypatterns](#)
for a chance to be featured on our social media.

Look for more PDF patterns at [simplicity.com](https://www.simplicity.com)

Have a question or need help with your sewing project call us at
1-800-782-0323

McCall's
by **design**_{group}

McCall's ©2024 a division of IG Design Group Americas Inc. • Atlanta, GA 30342 USA www.thedesigngroup.com • All Rights Reserved. www.mccall.com • Made in the U.S.A. Fabriqué aux États-Unis.

To be used for individual private home use only and not for commercial or manufacturing purposes. • A usage privé seulement et non à des fins commerciales ou de production en série. • Para uso privado solamente, no se puede utilizar con propósitos de comercialización o de producción en serie.