

McCall's

M8452



Designed and
printed in USA

Scan QR code for a Sew-Along video tutorial.
Scannez le code QR pour un didacticiel vidéo de couture.



MISSSES' SKIRT IN TWO LENGTHS

Suggested Fabrics: Dupioni, Lightweight Nylon, Ripstop, Taffeta. **Lining:** Lining Fabrics.

Interfacing: Lightweight Fusible.

Notions: **A:** 3¼ yds. (2.8m) of ½" (1.3cm) elastic. **B,C:** 2¼ yds. (2.1m) of ½" (1.3cm) elastic, 2 yds. (1.9m) of ¾" - ½" (1cm - 1.3cm) drawstring cord, four ½" - ¾" (1.3cm - 1.5cm) heavy duty snaps, pair of ¾" (1cm) grommets. **Also for B:** Two 7" (18cm) zippers, two cord stoppers, 2¾ yds. (2.6m) of elastic cord.

Sizes	6	8	10	12	14	16	18	20	22
European	32	34	36	38	40	42	44	46	48

BODY MEASUREMENTS: Select pattern size based on body measurements

Bust	30½	31½	32½	34	36	38	40	42	44	Ins.
Waist	23	24	25	26½	28	30	32	34	37	"
Hip-9" below waist	32½	33½	34½	36	38	40	42	44	46	"
Back-neck to waist	15½	15¾	16	16¼	16½	16¾	17	17¼	17½	"

Skirt A	45"	1¾	1¾	1¾	1¾	2	2½	2½	2½	2¾	Yds.
	60"	1¾	1¾	1¾	1¾	1¾	1¾	1¾	1¾	1¾	"
Lining	45"	1½	1½	1½	1½	1½	1½	1½	1½	1½	"
Skirt B,C	45"	3	3	3½	3½	3½	3½	3½	3½	3½	Yds.
	60"	2¼	2¼	2¼	2¼	2¼	2¼	2¼	2¼	2¼	"

Interfacing 20" - ¾ yd.

FINISHED GARMENT MEASUREMENTS (Includes Design and Wearing Ease)

A,B,C Hip	64	65	66	67½	69½	71½	73½	75½	77½	Ins.
Finished back length from waist										
Skirt A	18½	18½	18½	18½	18½	18½	18½	18½	18½	Ins.
Skirt B,C	28½	28½	28½	28½	28½	28½	28½	28½	28½	"

*with nap **without nap

Average

Moins Facile

JUPE EN DEUX LONGUEURS POUR JEUNES FEMMES

Tissus Conseillés: Dupioni, Nylon de poids léger, Nylon indéchirable, Taffetas. **Doublure:** Tissus à doublure. **Entoilage:** Thermocollant léger.

Mercerie: **A:** 2.8m d'élastique de 1.3cm. **B,C:** 2.1m of 1.3cm elastic, 1.9m de cordon de coulisse de 1cm - 1.3cm, 4 boutons-pressions résistant, paire de œillets de 1cm. **Aussi pour B:** 2 fermetures à glissière de 18cm, 2 arrêts de cordon, 2.6m de cordon élastique.

Tailles	6	8	10	12	14	16	18	20	22
Françaises	34	36	38	40	42	44	46	48	50
Européen	32	34	36	38	40	42	44	46	48

MESURES DU CORPS: Choisissez la taille du patron basée sur les mesures du corps

Poitrine	78	80	83	87	92	97	102	107	112	cm
Taille	58	61	64	67	71	76	81	87	94	"
Hanches (23cm au-dessous de la taille)	83	85	88	92	97	102	107	112	117	cm
Dos du cou à la taille	39.5	40	40.5	41.5	42	42.5	43	44	44.5	"

Jupe A	115cm*	1.6	1.6	1.6	1.7	1.8	1.8	1.9	2.1	2.2	m
	150cm*	1.5	1.5	1.5	1.5	1.5	1.6	1.6	1.6	1.6	"
Doublure	115cm**	0.9	0.9	0.9	1.0	1.0	1.0	1.0	1.0	1.0	"
Jupe B,C	115cm*	2.7	2.7	2.9	2.9	3.0	3.1	3.2	3.2	3.3	m
	150cm*	2.1	2.1	2.1	2.1	2.1	2.1	2.1	2.1	2.2	"

Entoilage 115cm** - 0.3m

MESURES DES VÊTEMENTS FINI (Motif et aisance de port compris)

A,B,C Hanches	163	165	168	171	177	182	187	192	197	m
Longueur finie – dos, taille à l'ourlet										
Jupe A	47	47	47	47	47	47	47	47	47	m
Jupe B,C	72	72	72	72	72	72	72	72	72	"

*avec sens **sans sens



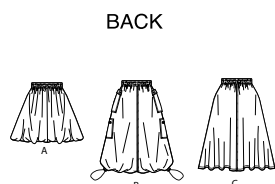
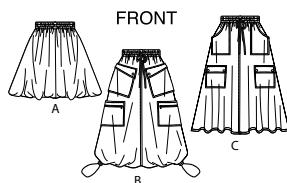
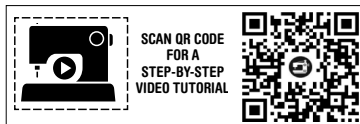
A



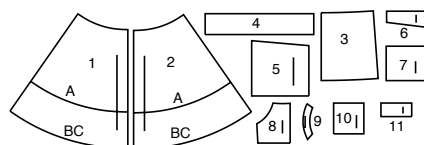
B



C

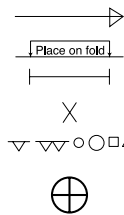


11 PATTERN PIECES



- 1 Front-A,B,C
- 2 Back-A,B,C
- 3 Front and Back Lining-A
- 4 Casing-A,B,C
- 5 Upper Pocket-B
- 6 Upper Pocket-B
- 7 Lower Pocket-B
- 8 Upper Pocket-C
- 9 Upper Pocket Facing-C
- 10 Lower Pocket-C
- 11 Lower Flap-C

PATTERN MARKINGS



GRAINLINE: Place on straight grain of fabric, parallel to selvage or fold.

FOLDLINE: Place line on fold of fabric.

BUTTONHOLE MARKING: Indicates exact length and placement of buttonholes.

BUTTON MARKING: Indicates button placement.

NOTCHES AND SYMBOLS: For matching seams and construction details.

Indicates the Bustline, Waistline, Hip and/or Biceps. Measurements refer to circumference of Finished Garment (Body Measurement + Wearing Ease + Design Ease). Adjust pattern if necessary. The measurement excludes pleats, tucks, darts and seam allowances.

SEAM ALLOWANCE: 5/8" (1.5cm) included unless otherwise indicated, but not printed on tissue.

ADJUST IF NECESSARY

Lengthen or Shorten at adjustment lines (==) or where indicated on pattern. If substantial length is added, you may need to purchase additional fabric.

TO SHORTEN: Crease along adjustment line. Make a fold half the amount needed. Tape in place.

TO LENGTHEN: Slash between adjustment lines. Spread amount as needed, keeping edges parallel. Tape over paper.

When Alteration lines are not on tissue, lengthen or shorten at lower edge.

CUTTING AND MARKING

SHRINK FABRIC if not labeled pre-shrunk. Press.

CIRCLE LAYOUT for View, Size, Fabric Width.

Use **WITH NAP** layout for fabrics with one-way designs, nap, pile or surface shading. Because most knits have surface shading, a with nap layout is used.

For **DOUBLE THICKNESS (WITH FOLD)** - fold fabric with right sides together.

*** DOUBLE THICKNESS (WITHOUT FOLD)** - For fabrics with nap, fold fabric crosswise, right sides together. Mark as shown. Cut along crosswise fold of fabric (A). Turn upper layer 180° so arrows go in same direction and place over lower layer, right sides together (B).

For **SINGLE THICKNESS** - place fabric right side up. (For Fur Pile fabrics, place pile side down.)

★ Cut other pieces first, allowing enough fabric to cut this piece. Open fabric. For "Cut 1" pieces, cut piece once on single layer of fabric with piece face up on right side of fabric.

Pattern may have cutting lines for several sizes. Select the proper cutting line or pattern pieces for your size.

Before **CUTTING** place all pieces on fabric according to layout. Pin. (Layouts show approximate position of pattern pieces; position may vary according to your pattern size.) Cut **ACCURATELY**, cutting notches outward.

Before removing pattern, **TRANSFER MARKINGS** and lines of construction to Wrong Side of fabric, using the Pin and Chalk Pencil method or Tracing Paper and Dressmaker Wheel. Markings needed on right side of fabric should be thread traced.

NOTE: Broken-line boxes (a! b! c!) in layouts represent pieces cut by measurements provided.

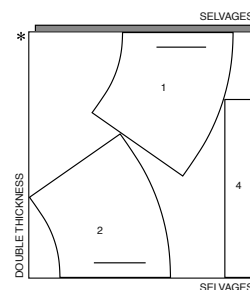
CUTTING LAYOUTS

RIGHT SIDE OF PATTERN	WRONG SIDE OF PATTERN	RIGHT SIDE OF FABRIC	WRONG SIDE OF FABRIC

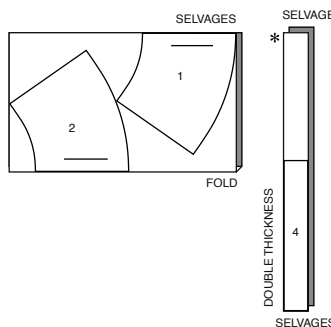
SKIRT A

use pieces: 1 2 4

45" (115 cm)
with nap
all sizes



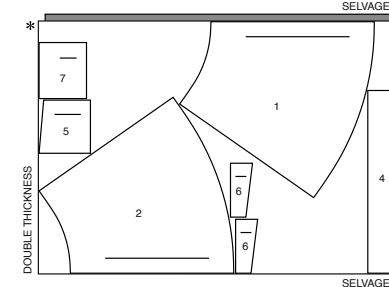
60" (150 cm)
with nap
all sizes



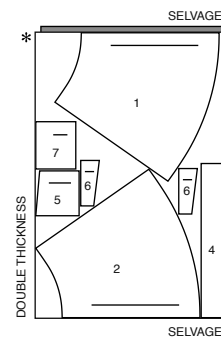
SKIRT B

use pieces: 1 2 4 5 6 7

45" (115 cm)
with nap
all sizes



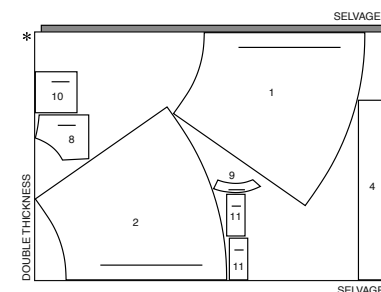
60" (150 cm)
with nap
all sizes



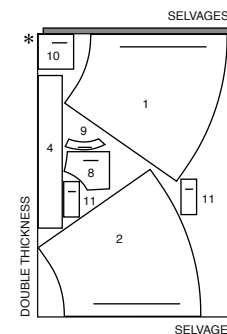
SKIRT C

use pieces: 1 2 4 8 9 10 11

45" (115 cm)
with nap
all sizes



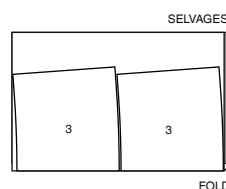
60" (150 cm)
with nap
all sizes



LINING A

use pieces: 3

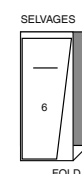
45" (115 cm)
without nap
all sizes



INTERFACING A,B

use pieces: 6

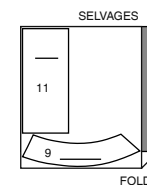
20" (51 cm)
without nap
all sizes



INTERFACING C

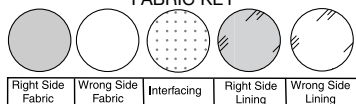
use pieces: 9 11

20" (51 cm)
without nap
all sizes



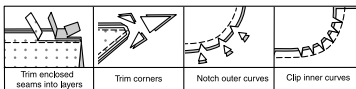
SEWING INFORMATION

FABRIC KEY



SEAM ALLOWANCES

Use 1/4" (6mm) seam allowances unless otherwise indicated.



PIN AND FIT

Pin or baste seams, **RIGHT SIDE TOGETHER**, matching notches. Fit garment before stitching major seams.

PRESS

Press seam allowances flat; then open unless otherwise stated. Clip where necessary so they lie flat.

GLOSSARY

Sewing terms appearing in **BOLD TYPE** in Sewing Instructions are explained

EDGESTITCH - Stitch close to finished edge or seam.

FINISH - Stitch 1/4" (6mm) from raw edge and finish with one of the following: (1) Pink OR (2) Overcast OR (3) Turn in along stitching and stitch close to fold OR (4) Overlock.

GATHER - Stitch along seamline and again 1/4" (6mm) away in seam allowance, using long machine stitches. Pull thread ends when adjusting to fit.

REINFORCE - Stitch along seamline where indicated in sewing instructions, using small machine stitches.

SLIPSTITCH - Slide needle through a folded edge, then pick up a thread of underneath fabric.

STAYSTITCH - Stitch 1/8" (3mm) from seamline in seam allowance (usually 1/2" (1.3cm) from raw edge).

TOPSTITCH - On outside, stitch 1/4" (6mm) from edge, seam or previous stitching, using presser foot as guide, or stitch where indicated in instructions.

UNDERSTITCH - Open out facing or underside of garment; stitch to seam allowance close to seam.



SCAN QR CODE
FOR A
STEP-BY-STEP
VIDEO TUTORIAL



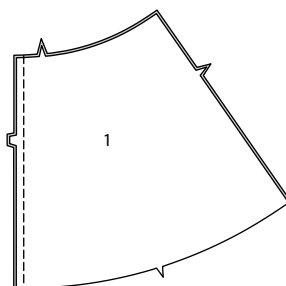
SKIRT A, B, C

NOTE: Under each sub-heading, the first View will be illustrated, unless otherwise indicated

NOTE: Pin **INTERFACING** to wrong side of each matching **FABRIC** section. Fuse, following manufacturer's instructions.

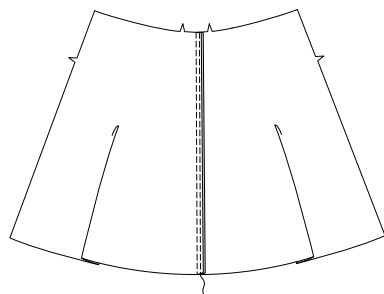
FRONT, BACK AND POCKETS

1. Stitch **FRONT** (1) sections together at center front.



VIEWS B, C:

2. Press seam toward right front. **TOPSTITCH** right front seam.

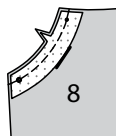


VIEW C:

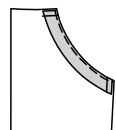
3. **FINISH** lower edge of **UPPER POCKET FACING** (9), as shown.



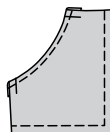
4. Pin upper pocket facing to upper side edge of **UPPER POCKET** (8). Stitch. **UNDERSTITCH** upper pocket facing.



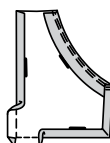
5. Turn facing to inside. Press. Baste upper and side edges.



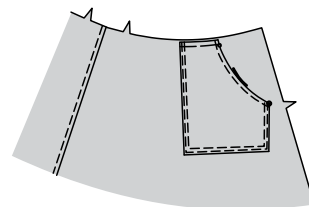
6. **TOPSTITCH** pocket opening. Stitch along seamline on side and lower raw edges.



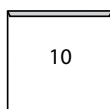
7. Turn in seam allowances along stitching on front, lower and side edges of upper pocket, diagonally folding corners. Press.



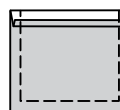
8. Pin upper pocket to front, matching small and large dots, placing pressed edges along pocket line. **EDGESTITCH** and **TOPSTITCH** pressed edges, reinforcing ends. Baste upper edges.



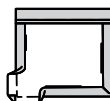
9. Turn in 1/4" (6mm) on upper edge of each **LOWER POCKET** (10). Press.



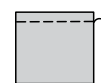
10. Turn upper edge to outside along foldline. Stitch along seamline on raw edges. Trim seam allowance in the facing area.



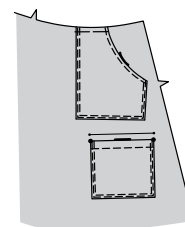
11. Turn upper edge of lower pocket to inside., Press, pressing under raw edges along stitching, diagonally folding corners. Baste close to inner pressed edge.



12. **TOPSTITCH** along basting.



13. Pin lower pocket to front, matching large dots. **EDGESTITCH** and **TOPSTITCH** side and lower edges, reinforcing upper ends.



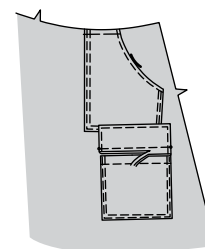
14. For each side, stitch one interfaced and one uninterfaced **LOWER FLAP** (11) section together, leaving upper edge open, as shown. Trim.



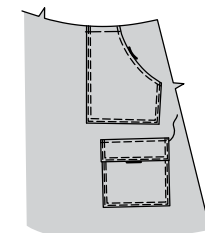
15. Turn. Press. Baste raw edges together. **EDGESTITCH** and **TOPSTITCH** finished edges.



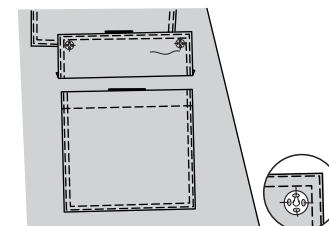
16. Pin flap to front above lower pocket, matching symbols, placing seamline along flap line. Stitch. Trim flap seam allowance to a scant 1/4" (6mm), being careful not to cut skirt.



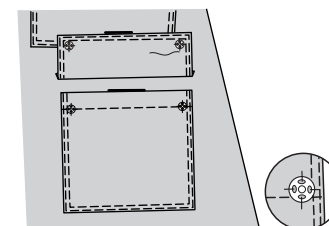
17. Turn flap down over pocket. Press. **TOPSTITCH** upper edge of flap.



18. Apply ball sections of snap fasteners to lower flap at small dots, following manufacturer's directions.

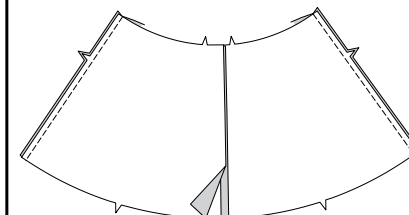


19. Apply socket sections of snap fasteners to lower pocket at small dots, following manufacturer's directions.



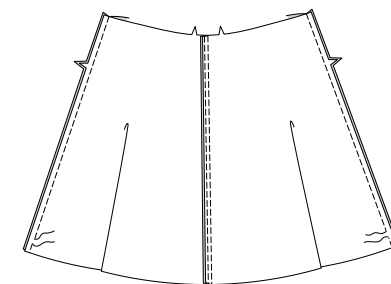
VIEWS A, C:

20. Stitch **BACK** (2) sections to front at sides.

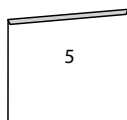


VIEW B:

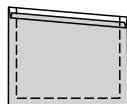
21. Stitch back sections to front at sides, leaving 1/2" (1.27cm) opening from 3/4" (1.9cm) above lower edge, as shown.



22. Turn in 1/4" (6mm) on upper edge of each **UPPER POCKET (5)**. Press.

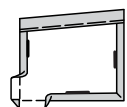


23. Turn upper edge to outside along foldline. Stitch along seamline on raw edges. Trim seam allowance in the facing area.

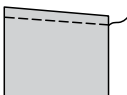


24. Turn upper edge of upper pocket to inside. Press, pressing under raw edges along stitching, diagonally folding corners. Press.

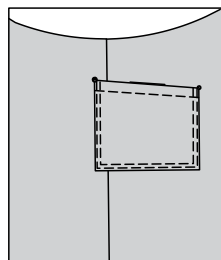
Baste close to inner pressed edge.



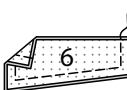
25. **TOPSTITCH** along basting.



26. Pin upper pocket to front and back, matching small and large dots. **EDGESTITCH** and **TOPSTITCH** side and lower edges, reinforcing upper ends.



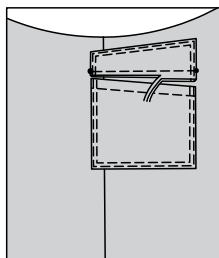
27. For each side, stitch one interfaced and one uninterfaced **UPPER FLAP (6)** section together, leaving upper edge open, as shown. Trim.



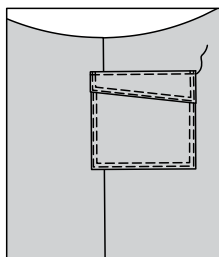
28. Turn. Press. Baste raw edges together. **EDGESTITCH** and **TOPSTITCH** finished edges.



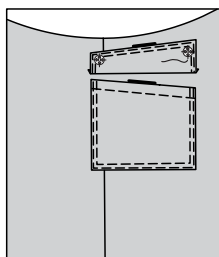
29. Pin flap to front and back above upper pocket, matching small and large dots, placing seamline along flap line. Stitch. Trim flap seam allowance to a scant 1/4" (6mm), being careful not to cut skirt.



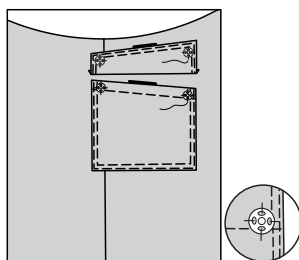
30. Turn flap down over pocket. Press. **TOPSTITCH** upper edge of flap.



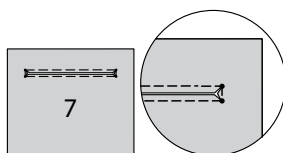
31. Apply ball sections of snap fasteners to upper flap at small dots, following manufacturer's directions.



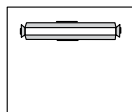
32. Apply socket sections of snap fasteners to upper pocket at small dots, following manufacturer's directions.



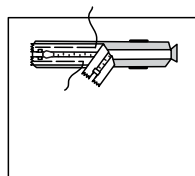
33. **REINFORCE** pocket opening and inner corners of **LOWER POCKET (7)**, as shown, pivoting at small dots. Slash along slash line, clipping diagonally to small dots.



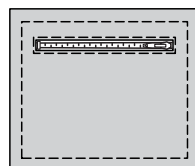
34. Turn in seam allowances on opening edges. Press.



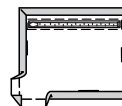
35. Center closed zipper, face up, under pocket opening edges, placing zipper stop at side edge, as shown. Baste.



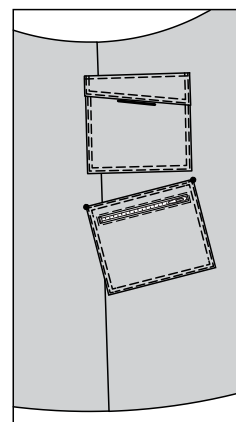
36. **EDGESTITCH** along basting, using a zipper foot. Stitch along seamline on raw edges.



37. Turn in seam allowances along stitching on upper, sides and lower edges of upper pocket, diagonally folding corners. Press.

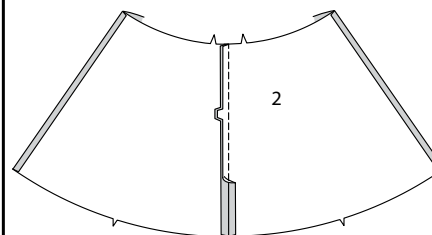


38. Pin lower pocket to front and back, matching large dots. **EDGESTITCH** and **TOPSTITCH** pressed edges.



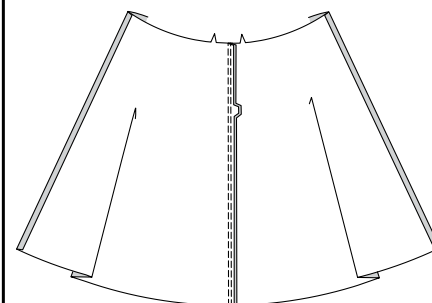
ALL VIEWS:

39. Stitch back sections together at center back.



VIEWS B, C:

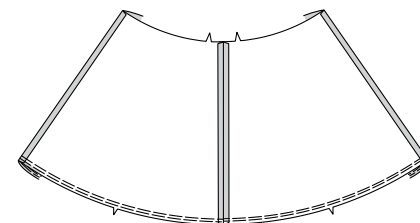
40. Press seam toward left back. **TOPSTITCH** left back seam.



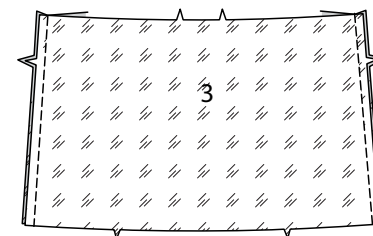
FINISHING

VIEW A:

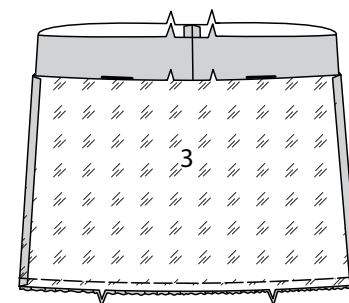
41. **GATHER** lower edge of skirt.



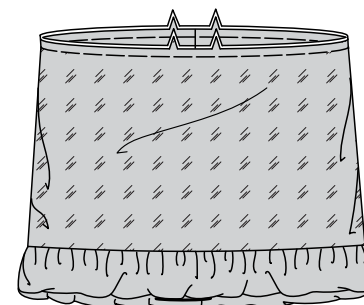
42. Stitch **FRONT AND BACK LINING (3)** together at sides.



43. With right sides together, pin lining to skirt at lower edge. Adjust gathers; baste. Stitch.



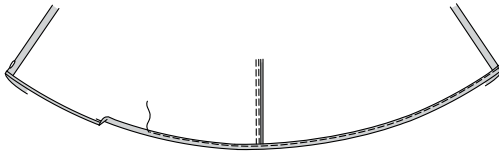
44. Turn lining to inside; press. Baste upper edges.



VIEW B:

45. Turn in 1/4" (6mm) on lower edge of skirt. Press.

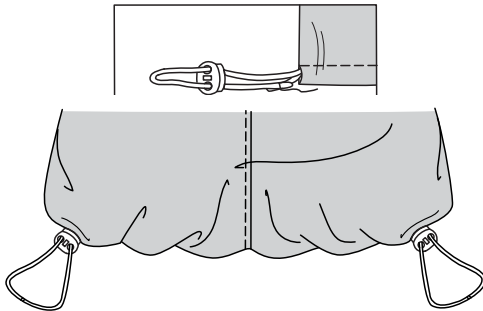
To form casing for elastic cord, turn up 1/2" (1.27cm) on lower edge of skirt; press. Stitch close to inner pressed edge, as shown.



46. Insert one end of elastic cord through stopper openings, as shown, extending one end approximately 9" (23cm).

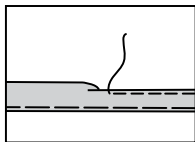


47. Insert longer end of cord through one opening. Pull cord through to other opening. Attach stopper, continuing cord to first opening. Lap ends 5/8" (1.5cm); stitch securely.



VIEW C:

48. Turn up skirt hem. Baste close to fold. Turn in 1/4" (6mm) on raw edge. Baste hem in place close to upper edge. Press.

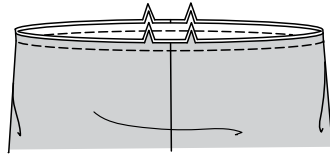


49. TOPSTITCH hem along upper basting.



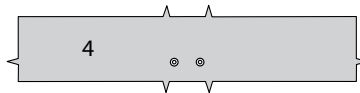
ALL VIEWS:

50. STAYSTITCH upper edge of skirt.



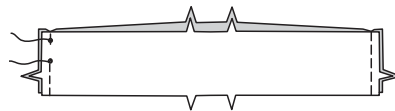
VIEW B, C:

51. For front casing, apply grommets to one CASING (4) section at inner small dots, as shown, following manufacturer's instructions.

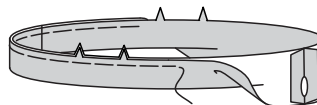


ALL VIEWS

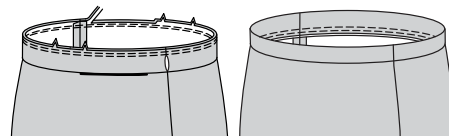
52. Stitch casing sections together at sides leaving open between small dots, as shown.



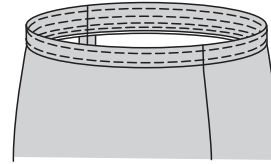
53. With wrong sides together, fold casing in half lengthwise. Press. Baste raw edges together.



54. Pin casing to upper edge of skirt, matching centers and seams. Stitch, clipping skirt where necessary. Stitch again 1/4" (6mm) away in seam allowance. Trim close to stitching. Press seam toward skirt.

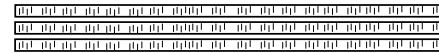


55. Stitch casing along stitching lines.

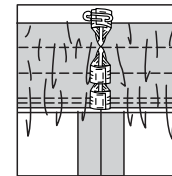


VIEW A:

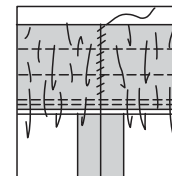
56. Cut three pieces of elastic the measurement of waist plus 1" (2.5cm).



57. Insert elastic through openings. Lap ends; hold with safety pin. Try on skirt and adjust elastic if necessary. Stitch ends of elastic securely.

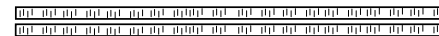


58. SLIPSTITCH opening edges together.

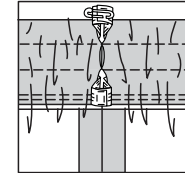


VIEWS B, C:

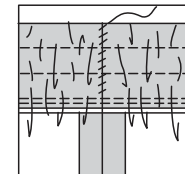
59. Cut two pieces of elastic the measurement of waist plus 1" (2.5cm).



60. Insert elastic through upper and lower openings, as shown. Lap ends; hold with safety pin. Try on skirt and adjust elastic if necessary. Stitch ends of elastic securely.



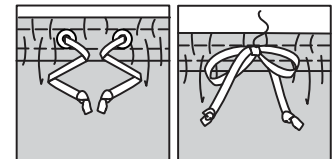
61. SLIPSTITCH opening edges together.

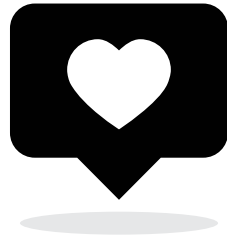


62. Cut a piece of drawstring approximately 72" (183cm) long.



63. Insert drawstring into casing through one grommet and out through the remaining grommet, extending ends evenly. Trim ends as desired. Tie ends in a knot.





Congrats!

You've completed your sewing adventure

SHARE YOUR LOOK



Post your pattern and tag us
[@simplicity_creative_group](#) and [#simplicitypatterns](#)
for a chance to be featured on our social media.

Look for more PDF patterns at [simplicity.com](https://www.simplicity.com)

Have a question or need help with your sewing project call us at
1-800-782-0323

McCall's
by **design**_{group}

McCall's ©2024 a division of IG Design Group Americas Inc. • Atlanta, GA 30342 USA www.thedesigngroup.com • All Rights Reserved. www.mccall.com • Made in the U.S.A. Fabriqué aux États-Unis.

To be used for individual private home use only and not for commercial or manufacturing purposes. • A usage privé seulement et non à des fins commerciales ou de production en série. • Para uso privado solamente, no se puede utilizar con propósitos de comercialización o de producción en serie.