

McCall's

M/8451



Designed and printed in USA

Average

MISSES' TOPS WITH A/B,C,D CUP SIZES

Suggested Fabrics: Challis, Cotton Blends, Gingham, Linen. **Interfacing:** Lightweight Fusible.

Notions: A,B,C: Six 3/8" (1.5cm) buttons.

Sizes	8	10	12	14	16	18	20	22	24	26
European	34	36	38	40	42	44	46	48	50	52

BODY MEASUREMENTS: Select pattern size based on body measurements

Bust	31½	32½	34	36	38	40	42	44	46	48	Ins.
Waist	24	25	26½	28	30	32	34	37	39	41	"
Hip-9" below waist	33½	34½	36	38	40	42	44	46	48	50	"
Back-neck to waist	15¾	16	16¼	16½	16¾	17	17¼	17½	17¾	18	"

Top A	45**	1½	1½	1½	1½	1½	1½	1½	1½	1½	Yds.
	60**	1½	1½	1½	1½	1½	1½	1½	1½	1½	"

Interfacing	20"	¾	¾	¾	¾	¾	¾	¾	¾	¾	"
Top B	45**	1½	1½	2½	2½	2½	2½	2½	2½	2½	Yds.
	60**	1½	1½	1½	1½	1½	1½	1½	1½	1½	"

Interfacing	20"	1½ <th>1½ <th>1½ <th>1½ <th>1½ <th>1½ <th>1½ <th>1½ <th>1½ <th>"</th> </th></th></th></th></th></th></th></th>	1½ <th>1½ <th>1½ <th>1½ <th>1½ <th>1½ <th>1½ <th>1½ <th>"</th> </th></th></th></th></th></th></th>	1½ <th>1½ <th>1½ <th>1½ <th>1½ <th>1½ <th>1½ <th>"</th> </th></th></th></th></th></th>	1½ <th>1½ <th>1½ <th>1½ <th>1½ <th>1½ <th>"</th> </th></th></th></th></th>	1½ <th>1½ <th>1½ <th>1½ <th>1½ <th>"</th> </th></th></th></th>	1½ <th>1½ <th>1½ <th>1½ <th>"</th> </th></th></th>	1½ <th>1½ <th>1½ <th>"</th> </th></th>	1½ <th>1½ <th>"</th> </th>	1½ <th>"</th>	"
Top C	45**	2½	2¼	2¼	2¼	2¼	2½	2½	2½	2½	Yds.
	60**	1½	1½	1½	1½	1½	1¾	2	2	2	"

Interfacing	20"	¾	¾	¾	¾	¾	¾	¾	¾	¾	"
-------------	-----	---	---	---	---	---	---	---	---	---	---

FINISHED GARMENT MEASUREMENTS (Includes Design and Wearing Ease)

A/B Bust Cup	34	35	36½	38½	40½	42½	44½	46½	48½	50½	Ins.
C Bust Cup	35	36	37½	39½	41½	43½	45½	47½	49½	51½	"
D Bust Cup	36	37	38½	40½	42½	44½	46½	48½	50½	52½	"
Waist (A/B Bust Cup)	27	28	29½	31½	33½	35½	37½	39½	41½	43½	"
Waist (C Bust Cup)	27½	28½	30	32	34	36	38	40	42	44	"
Waist (D Bust Cup)	28½	29½	31	33	35	37	39	41	43	45	"
Finished back length from base of neck											
Top A,B,C	19¾	20	20¼	20½	20¾	21	21¼	21½	21¾	22	Ins.

*with nap **without nap

Moins Facile

HAUTS AVEC TAILLES DE BONNET A/B,C,D POUR JEUNES FEMMES

Tissu Conseillé: Challis, Cotonnades, Vichy, Toile de Lin. **Entoilage:** Thermocollant léger.

Merci: A,B,C: 6 boutons de 1.5cm.

Tailles	8	10	12	14	16	18	20	22	24	26
Françaises	36	38	40	42	44	46	48	50	52	54
Européen	34	36	38	40	42	44	46	48	50	52

MESURES DU CORPS: Choisissez la taille du patron basée sur les mesures du corps

Poitrine	80	83	87	92	97	102	107	112	117	122	cm
Taille	61	64	67	71	76	81	87	94	99	104	"

Hanches (23cm au-dessous de la taille)

	85	88	92	97	102	107	112	117	122	127	cm
Dos du cou à la taille	40	40.5	41.5	42	42.5	43	44	44.5	45	46	"

Haut A	115cm*	1.4	1.4	1.4	1.5	1.5	1.5	1.7	1.7	1.7	1.7	m
	150cm*	1.0	1.0	1.0	1.1	1.3	1.3	1.4	1.4	1.4	1.5	"

Entoilage	51cm	0.7	0.7	0.7	0.7	0.7	0.7	0.8	0.8	0.8	"	
Haut B	115cm*	1.7	1.7	1.9	1.9	1.9	1.9	2.2	2.2	2.2	2.3	m
	150cm*	1.3	1.4	1.4	1.4	1.4	1.5	1.5	1.5	1.5	1.6	"

Entoilage	51cm	1.4	1.4	1.5	1.5	1.5	1.5	1.5	1.5	1.5	"	
Haut C	115cm*	1.9	1.9	2.1	2.1	2.1	2.2	2.2	2.2	2.2	2.2	m
	150cm*	1.5	1.5	1.5	1.5	1.5	1.5	1.6	1.8	1.8	1.8	"

Entoilage -	51cm	0.8m
-------------	------	------

MESURES DES VÊTEMENTS FINI (Motif et aisance de port compris)

A/B Poitrine-Bonnet	86	89	93	98	103	108	113	118	123	128	cm
C Poitrine-Bonnet	89	91	95	100	105	110	116	121	126	131	"
D Poitrine-Bonnet	91	94	98	103	108	113	118	123	128	133	"
Taille (A/B Poitrine-Bonnet)	69	71	75	80	85	90	95	100	105	110	cm
Taille (C Poitrine-Bonnet)	70	72	76	81	86	91	97	102	107	112	cm
Taille (D Poitrine-Bonnet)	72	75	79	84	89	94	99	104	109	114	cm
Longueur finie - dos, votre nuque à l'ourlet											
Haut A,B,C	50	51	51	52	53	53	54	55	55	56	cm

*avec sens **sans sens



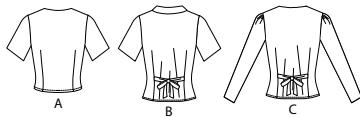
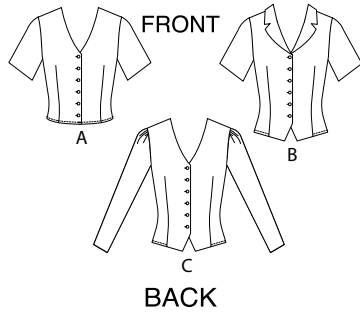
A



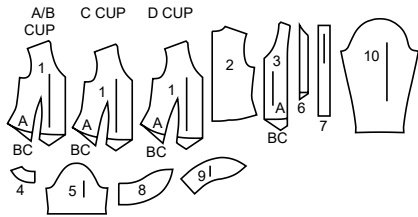
B



C

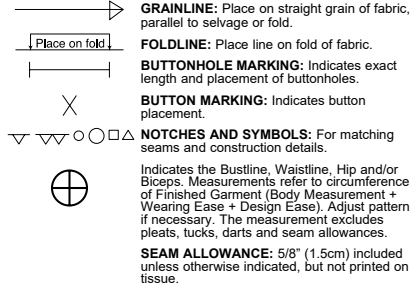


10 PATTERN PIECES



- 1A/B Front-A,B,C - A/B Cup
- 1C Front-A,B,C - C Cup
- 1D Front-A,B,C - D Cup
- 2 Back-A,B,C
- 3 Front Facing-A,B,C
- 4 Back Facing-A,B,C
- 5 Sleeve-A,B
- 6 Guide for Buttonholes-A,B,C
- 7 Tie End-B,C
- 8 Upper Collar-B
- 9 Under Collar-B
- 10 Sleeve-C

PATTERN MARKINGS



ADJUST IF NECESSARY

Lengthen or Shorten at adjustment lines (==) or where indicated on pattern. If substantial length is added, you may need to purchase additional fabric.

TO SHORTEN: Crease along adjustment line. Make a fold half the amount needed. Tape in place.

TO LENGTHEN: Slash between adjustment lines. Spread amount as needed, keeping edges parallel. Tape over paper.

When Alteration lines are not on tissue, lengthen or shorten at lower edge.

CUTTING AND MARKING

SHRINK FABRIC if not labeled pre-shrunk. Press.

CIRCLE LAYOUT for View, Size, Fabric Width.

Use **WITH NAP** layout for fabrics with one-way designs, nap, pile or surface shading. Because most knits have surface shading, a with nap layout is used.

For **DOUBLE THICKNESS (WITH FOLD)** - fold fabric with right sides together.

*** DOUBLE THICKNESS (WITHOUT FOLD)** - For fabrics with nap, fold fabric crosswise, right sides together. Mark as shown. Cut along crosswise fold of fabric (A). Turn upper layer 180° so arrows go in same direction and place over lower layer, right sides together (B).

For **SINGLE THICKNESS** - place fabric right side up. (For Fur Pile fabrics, place pile side down.)

★ Cut other pieces first, allowing enough fabric to cut this piece. Open fabric. For "Cut 1" pieces, cut piece once on single layer of fabric with piece face up on right side of fabric.

Pattern may have cutting lines for several sizes. Select the proper cutting line or pattern pieces for your size.

Before **CUTTING** place all pieces on fabric according to layout. Pin. (**Layouts show approximate position of pattern pieces; position may vary according to your pattern size.**) Cut **ACCURATELY**, cutting notches outward.

Before removing pattern, **TRANSFER MARKINGS** and lines of construction to Wrong Side of fabric, using the Pin and Chalk Pencil method or Tracing Paper and Dressmaker Wheel. Markings needed on right side of fabric should be thread traced.

NOTE: Broken-line boxes (a| b| c|) in layouts represent pieces cut by measurements provided.

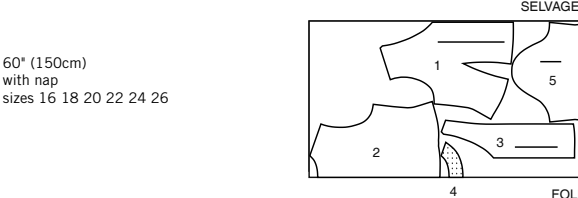
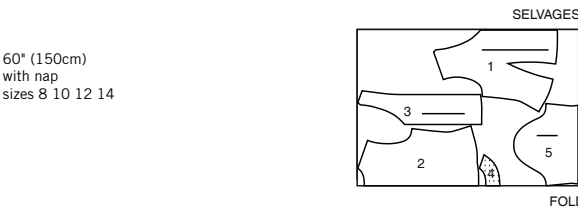
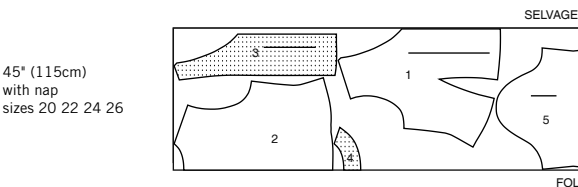
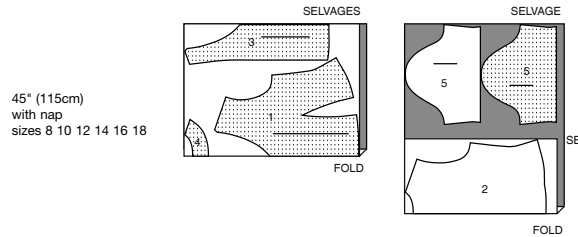
CUTTING LAYOUTS

RIGHT SIDE OF PATTERN	WRONG SIDE OF PATTERN	RIGHT SIDE OF FABRIC	WRONG SIDE OF FABRIC
-----------------------	-----------------------	----------------------	----------------------

TOP A

use pieces 1 2 3 4 5

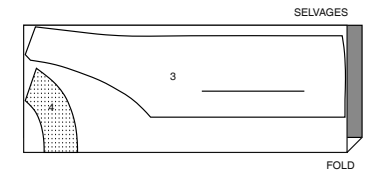
NOTE: Layouts shown for D Cup.
For A/B Cup: Substitute piece 1A/B for piece 1D.
For C Cup: Substitute piece 1C for piece 1D.



INTERFACING A

use pieces: 3, 4

20" (51 cm)
all sizes

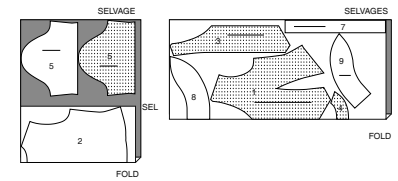


TOP B

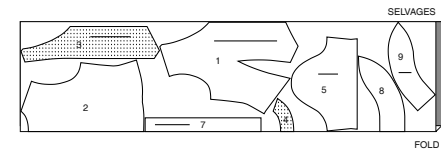
use pieces: 1 2 3 4 5 7 8 9

NOTE: Layouts shown for D Cup.
For A/B Cup: Substitute piece 1A/B for piece 1D.
For C Cup: Substitute piece 1C for piece 1D.

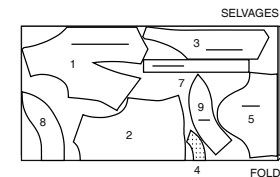
45" (115 cm)
with nap
sizes 8 10 12 14 16 18



45" (115 cm)
with nap
sizes 20 22 24 26



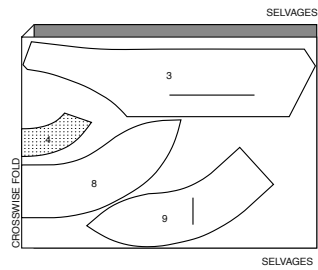
60" (150 cm)
with nap
all sizes



INTERFACING B

use pieces: 3 4 8 9

20" (51 cm)
all sizes

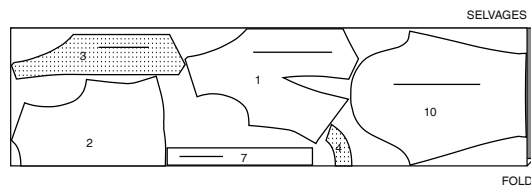


TOP C

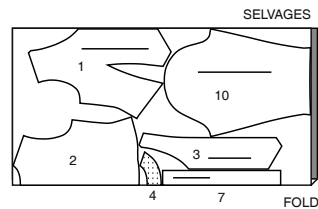
use pieces: 1 2 3 4 7 10

NOTE: Layouts shown for D Cup.
For A/B Cup: Substitute piece 1A/B for piece 1D.
For C Cup: Substitute piece 1C for piece 1D.

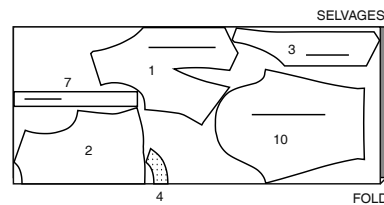
45" (115cm)
with nap
all sizes



60" (150cm)
with nap
sizes 8 10 12 14 16 18 20



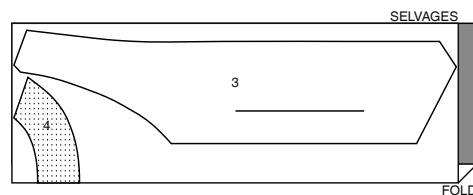
60" (150cm)
with nap
sizes 22 24 26



INTERFACING C

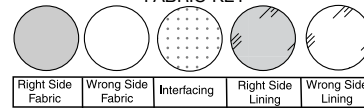
use pieces: 3,4

20" (51 cm)
all sizes



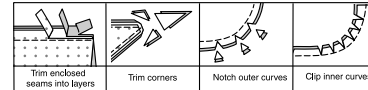
SEWING INFORMATION

FABRIC KEY



SEAM ALLOWANCES

Use 5/8" (1.5cm) seam allowances unless otherwise indicated.



PIN AND FIT

Pin or baste seams, **RIGHT SIDE TOGETHER**, matching notches. Fit garment before stitching major seams.

PRESS

Press seam allowances flat; then open unless otherwise stated. Clip where necessary so they lie flat.

GLOSSARY

Sewing terms appearing in **BOLD TYPE** in Sewing Instructions are explained below.

DART – see **Darts**: “sewing flat dart” video.

FINISH – see **Seams**: “how to finish seam allowances” video.

EASE/GATHER – see **Gathering**: “sewing two row gathers” video.

NARROW HEM – see **Hems**: “sewing narrow hems” video.

SLEEVE – see **Armholes/Sleeves**: “sewing a set-in sleeve” video.

STAYSTITCH – see **Machine Stitches**: “how to do stay-stitching” video.

UNDERSTITCH – see **Machine Stitches**: “how to understitch” video.

SEWING TUTORIALS



Build your skills viewing short, easy-to-follow videos at simplicity.com/sewingtutorials

PATTERN PIECES WILL BE IDENTIFIED BY NUMBERS THE FIRST TIME THEY ARE USED.

STITCH SEAMS WITH RIGHT SIDES TOGETHER UNLESS OTHERWISE STATED.

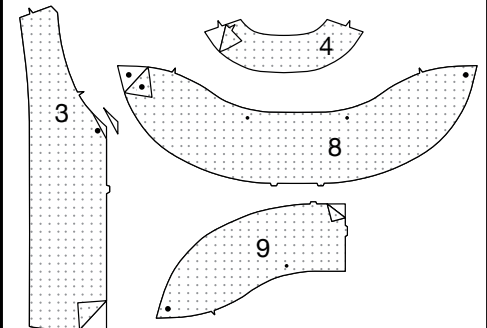
SEWING DIRECTIONS

TOP A, B, C

NOTE: The first view mentioned will be shown, unless otherwise indicated.

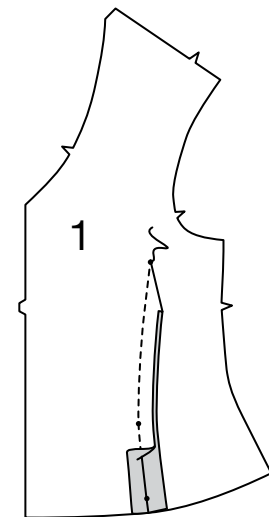
INTERFACING

1. Pin **INTERFACING** to wrong side of each matching fabric section. Trim corners, as shown. Fuse, following manufacturer's instructions.

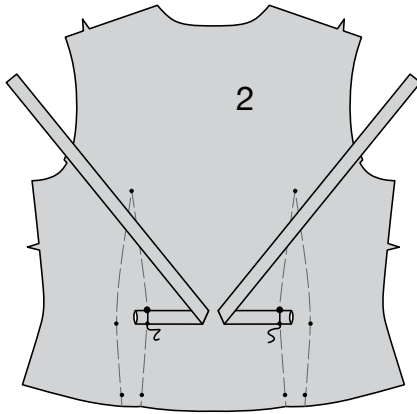
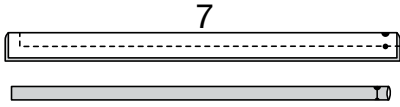


FRONT AND BACK

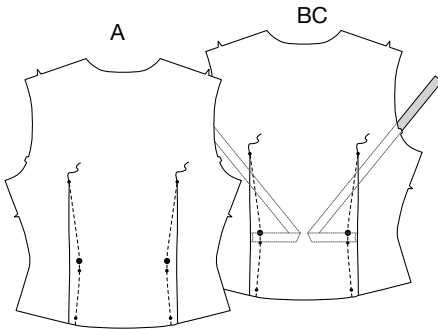
2. Stitch **DART** seam in **FRONT** (1). Press dart seam open and point to one side.



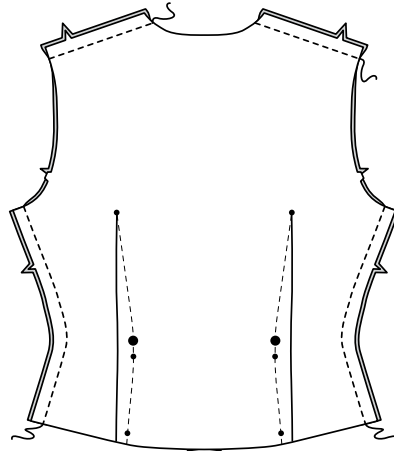
3. **Views B, C:** With right sides together, fold TIE END (7) in half lengthwise, having raw edges even. Stitch, leaving marked end open. Trim corner and seam allowances. Turn right side out. Press. Pin tie end to BACK (2), matching small and large dots having raw end pointed away from center back. Baste.



4. Stitch **DART** in BACK (2). Press dart toward sides.

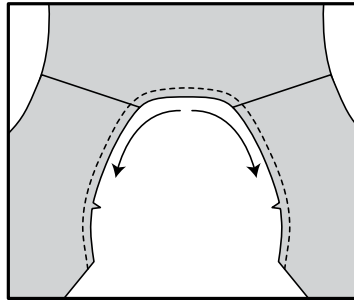


5. Stitch front and back together at shoulders and sides.

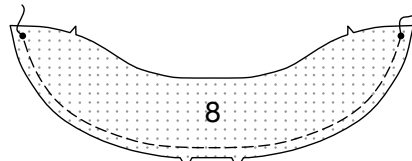


COLLAR VIEW B

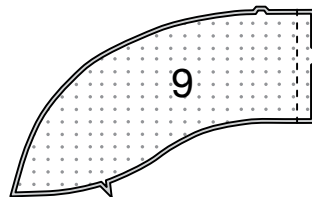
6. **STAYSTITCH** neck edge of top.



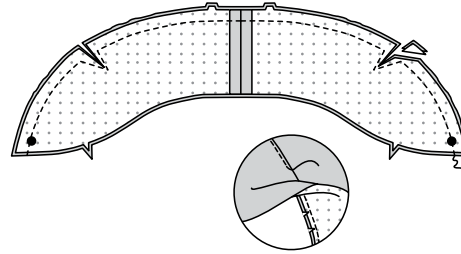
7. **EASESTITCH** outer edge of UPPER COLLAR (8) between large dots.



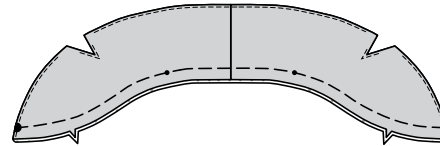
8. Stitch center back seam in **UNDER COLLAR** (9).



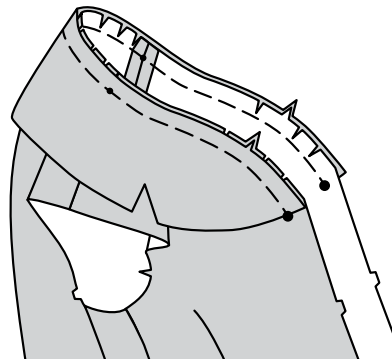
9. Pin upper collar to under collar, right sides together, matching center backs, notches, stitching lines and small and large dots. Adjust ease. Stitch outer edge and along stitching lines, as shown. Slash between stitching lines up to inner corner but not through stitching. Trim corners and seam allowances. **UNDERSTITCH** under collar as far as possible.



10. Turn right side out. Press. Baste raw edges together.

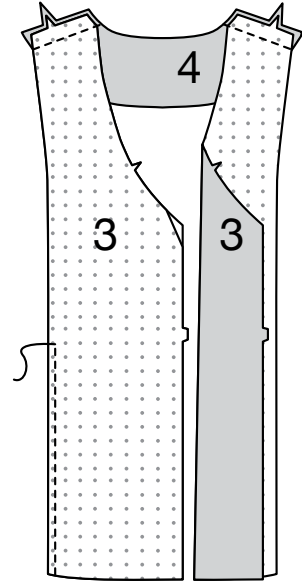


11. On outside, pin collar to neck edge with upper collar facing up, clipping garment to staystitching, as needed. Baste.

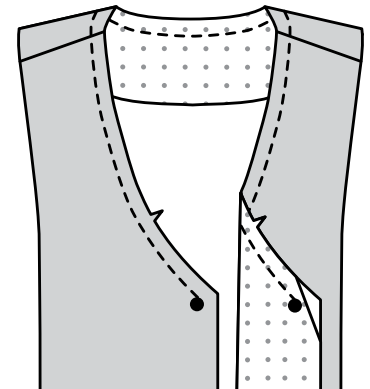


FACING, VIEWS A, B, C

12. Stitch **FRONT FACING** (3) and **BACK FACING** (4) together at shoulders. **FINISH** outer edge of facing.

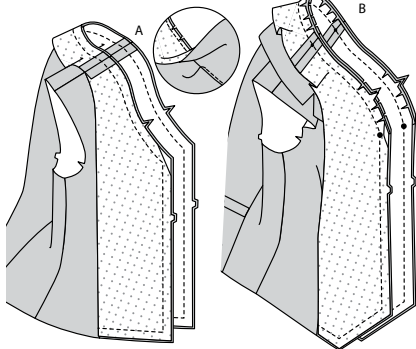


13. **View B:** **STAYSTITCH** neck edge of facing.

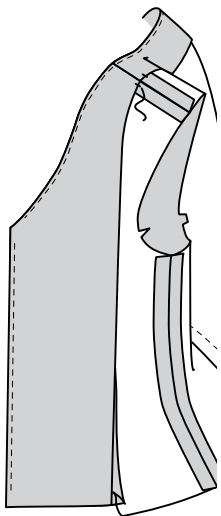


14. Pin facing to top, right sides together, over collar for View B, matching center backs, notches, large dots, and small dots to shoulder seams. Baste. Stitch lower, front and neck edges, ending at front dart. Trim.

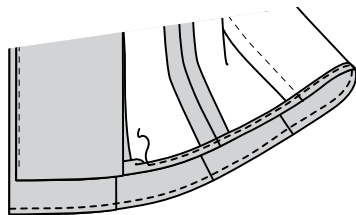
UNDERSTITCH front facing as far as possible.



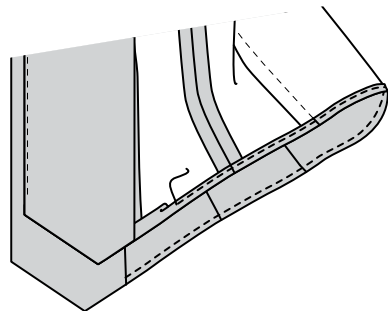
15. Turn facing to inside. Press. Tack at shoulders.



16. **View A:** Make a 5/8"(1.5cm) **NARROW HEM** at lower edge, continuing across facing when stitching.



17. **Views B, C:** Make a 5/8"(1.5cm) **NARROW HEM** at lower edge between front darts.

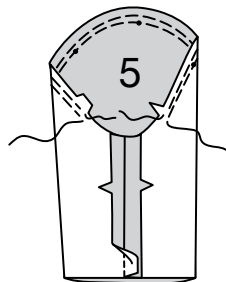


SLEEVES

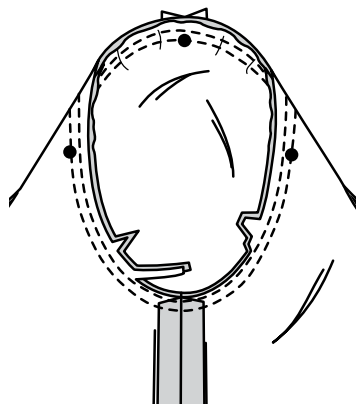
NOTE: For a how to video, see Armholes/Sleeves: "sewing a set in sleeve".

Views A, B

18. **EASESTITCH** upper edge of **SLEEVE (5)** between notches. Stitch sleeve seam.

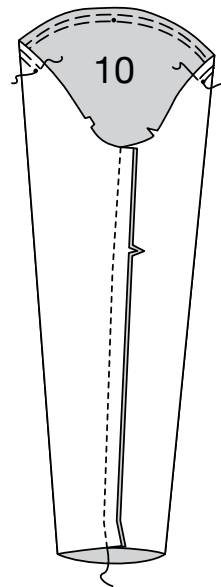


19. With right sides together, pin sleeve into armhole with center small dot at shoulder seam, matching underarm seams, notches and remaining small dots. Adjust ease, baste. Stitch. Stitch again 1/4"(6mm) away in seam allowance. Trim close to stitching.

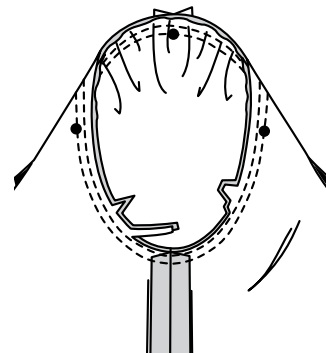


View C

20. **GATHER** upper edge of **SLEEVE (10)** between outer small dots, as shown. Stitch sleeve seam.

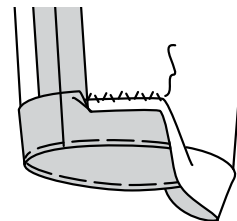


21. With right sides together, pin sleeve into armhole with center small dot at shoulder seam, matching underarm seams, notches and remaining small dots. Adjust gathers, baste. Stitch. Stitch again 1/4"(6mm) away in seam allowance. Trim close to stitching.



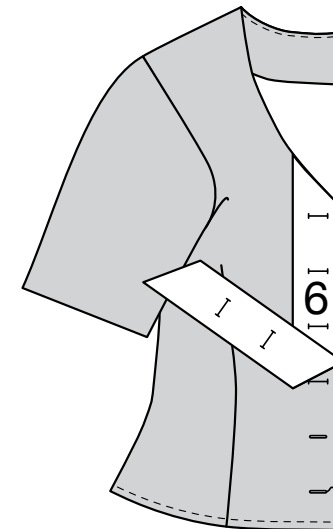
Views A, B, C

22. Turn up sleeve hem. Baste close to fold. Sew hem in place. Press.

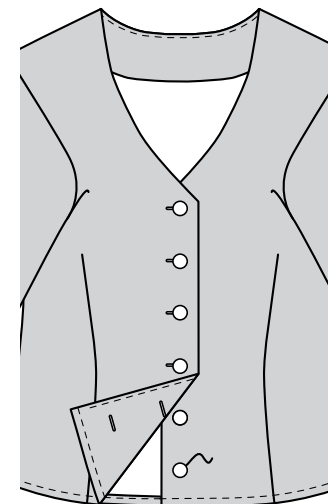


FINISHING

23. Place **GUIDE FOR BUTTONHOLES (6)** on right front, having edges of tissue even with finished edges of top, as shown. Transfer markings. Make buttonholes at markings.



24. Lap opening edges, matching centers. Using buttonholes as guides, mark button placement. Sew buttons to markings.





Congrats!

You've completed your sewing adventure

**SHARE
YOUR** LOOK



Post your pattern and tag us
[@simplicity_creative_group](#) and [#simplicitypatterns](#)
for a chance to be featured on our social media.

Look for more PDF patterns at [simplicity.com](#)

Have a question or need help with your sewing project call us at
1-800-782-0323

McCall's
by **design**_{group}

McCall's ©2024 a division of IG Design Group Americas Inc. • Atlanta, GA 30342 USA [www.thedesigngroup.com](#) • All Rights Reserved. [www.mccall.com](#) • Made in the U.S.A. Fabriqué aux États-Unis.
To be used for individual private home use only and not for commercial or manufacturing purposes. • A usage privé seulement et non à des fins commerciales ou de production en série. • Para uso privado solamente, no se puede utilizar con propósitos de comercialización o de producción en serie.