

**McCall's**

M8450



Designed and printed in USA

Average

MISSES' AND WOMEN'S DRESS, JUMPSUIT (WITH A/B,C,D CUP SIZES FOR MISSES' AND C,D,DD CUP SIZES FOR WOMEN'S) AND OVERSKIRT

**Suggested Fabrics:** Novelty Fabric, Satin, Shantung, Taffeta. **Contrast A:** Lace, Sequin, Sheers.

**Lining:** Lining Fabrics. **Interfacing:** Lightweight Fusible.

**Notions:** A,B: One 14" (36cm) invisible zipper, one ¾" - 1" (2cm - 2.5cm) button.

Sizes	10	12	14	16	18	20W	22W	24W	26W	28W
European	36	38	40	42	44	46	48	50	52	54

**BODY MEASUREMENTS:** Select pattern size based on body measurements

<b>Bust</b>	32½	34	36	38	40	42	44	46	48	50	Ins.
<b>Waist</b>	25	26½	28	30	32	35	37	39	41½	44	"
<b>Hip-9" below waist</b>	34½	36	38	40	42	44	46	48	50	52	"
<b>Back-neck to waist</b>	16	16¼	16½	16¾	17	17¼	17¾	17½	17¾	17¾	"

<b>Dress A</b>	45**	1¼	1¼	1¼	1¼	1¼	1¾	1¾	1¾	1¾	1¾	Yds.
	60**	1	1	1	1	1	1½	1½	1½	1½	1½	"

**For Contrast (Overlay) purchase same amount as Dress A**

<b>Lining A</b>	45**	1	1	1½	1½	1½	1½	1½	1½	1½	1½	Yds.
<b>Jumpsuit B</b>	45**	2½	2½	2½	2½	2½	2½	2½	2½	2½	2½	Yds.
	60**	1½	1½	1½	1¾	1¾	2½	2½	2½	2½	2½	"
<b>Lining</b>	45**	½	¾	¾	¾	¾	¾	¾	¾	¾	¾	"
<b>Overskirt C</b>	60**	4¾	4¾	4¾	4¾	4¾	5¾	5¾	5¾	5¾	5¾	Yds.
<b>Interfacing C,D</b>	20"	1¾	1¾	1¾	1¾	1¾	1¾	1¾	1½	1½	1½	Yds.
<b>Overskirt D</b>	60**	4¾	4¾	4¾	4¾	4¾	5¾	5¾	5¾	5¾	5¾	Yds.

**NOTE:** Please refer to the sewing instructions for **FINISHED GARMENT MEASUREMENTS**.

\*\*withnap \*\*without nap

Moins Facile

ROBE, COMBINAISON (AVEC TAILLES DE BONNET A/B,C,D,DD POUR JEUNES FEMMES ET TAILLES DE BONNET C,D,DD POUR FEMMES) ET DESSUS DE JUPE POUR JEUNES FEMMES ET FEMMES

**Tissus Conseillés:** Tissus fantaisie, Satin, Shantung, Taffetas. **Contraste A:** Dentelle, Tissu Paillette, Tissus transparent. **Doublure:** Tissus à doublure. **Entoilage:** Thermocollant léger.

**Merci:** A,B: 1 fermeture à glissière invisible de 36cm, 1 bouton de 2cm - 2.5cm.

Tailles	10	12	14	16	18	20W	22W	24W	26W	28W
Françaises	38	40	42	44	46	48	50	52	54	56
Européen	36	38	40	42	44	46	48	50	52	54

**MESURES DU CORPS:** Choisissez la taille du patron basée sur les mesures du corps

<b>Poitrine</b>	83	87	92	97	102	107	112	117	122	127	cm
<b>Taille</b>	64	67	71	76	81	89	94	99	105	112	"
<b>Hanches (23cm au-dessous de la taille)</b>	88	92	97	102	107	112	117	122	127	132	cm
<b>Dos du cou à la taille</b>	40.5	41.5	42	42.5	43	44	44	44.5	45	45	"

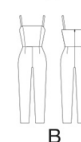
<b>Robe A</b>	115cm*	1.1	1.1	1.1	1.1	1.1	1.3	1.5	1.5	1.5	1.5	m
	150cm*	0.9	0.9	0.9	0.9	0.9	1.0	1.0	1.1	1.1	1.1	"

**For Contraste (Pièce superposée) purchase same amount as Dress A**

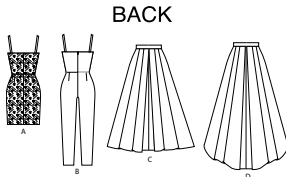
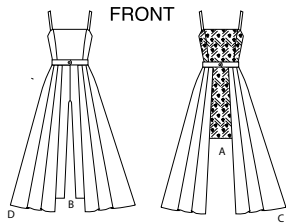
<b>Doublure</b>	115cm**	0.9	0.9	1.0	1.1	1.1	1.4	1.4	1.5	1.5	1.5	m
<b>Combinaison B</b>	115cm*	1.9	1.9	2.3	2.3	2.3	2.3	2.4	2.6	2.6	2.6	m
	150cm*	1.5	1.5	1.5	1.5	1.6	1.9	1.9	2.1	2.2	2.2	"
<b>Doublure</b>	115cm**	0.5	0.6	0.6	0.6	0.6	0.7	0.7	0.7	0.7	0.7	"
<b>Deessus de jupe C</b>	115cm*	4.2	4.3	4.3	4.3	4.5	4.7	4.7	4.7	4.8	4.9	m
<b>Entoilage C,D</b>	51cm	1.3	1.3	1.3	1.3	1.3	1.3	1.3	1.3	1.3	1.4	m
<b>Deessus de jupe D</b>	115cm*	4.3	4.3	4.5	4.5	4.5	4.7	4.8	4.8	4.8	4.9	m

**NOTE:** S'il vous plaît, reportez-vous aux instructions de couture pour les **MESURES DU VÊTEMENTS FINI**.

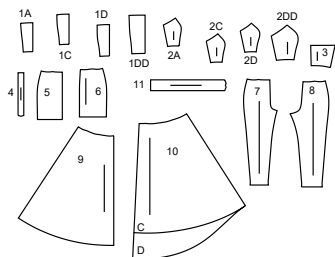
\*avec sens \*\*sans sens



D



11 PATTERN PIECES



- 1A/B BODICE FRONT - A,B (A/B CUP - MISSES')
- 1C BODICE FRONT - A,B (C CUP - MISSES'/WOMEN'S)
- 1D BODICE FRONT - A,B (D CUP - MISSES'/WOMEN'S)
- 1DD BODICE FRONT - A,B (DD CUP - WOMEN'S)
- 2A/B BODICE SIDE FRONT - A,B (A/B CUP - MISSES')
- 2C BODICE SIDE FRONT - A,B (C CUP - MISSES'/WOMEN'S)
- 2D BODICE SIDE FRONT - A,B (D CUP - MISSES'/WOMEN'S)
- 2DD BODICE SIDE FRONT - A,B (DD CUP - WOMEN'S)
- 3 BODICE BACK - A,B
- 4 SHOULDER STRAP - A,B
- 5 SKIRT FRONT - A
- 6 SKIRT BACK - A
- 7 PANTS FRONT - B
- 8 PANTS BACK - B
- 9 FRONT - C,D
- 10 BACK - C,D
- 11 WAISTBAND - C,D

Size	10	12	14	16	18	20W	22W	24W	26W	28W
European	36	38	40	42	44	46	48	50	52	54

FINISHED GARMENT MEASUREMENTS (Includes Design and Wearing Ease)

A,B Bust Cup	34½	36	38	40	42	-	-	-	-	-
C Bust Cup	35½	37	39	41	43	44	46	48	50	52
D Bust Cup	36½	38	40	42	44	45	47	49	51	53
DD Bust Cup	-	-	-	-	-	46	48	50	52	54
A,B Waist	26	27½	29½	31½	33½	36	38	40	42½	45
C,D Waist	25¼	26¼	28¼	32¼	34¼	36¼	38¼	40¼	42¼	44¼
A,B Hip	37½	39	41	43	45	47	49	51	53	55
Width, lower edge										
Dress A	37	38½	40½	42½	44½	45	47	49	51	53
Width, each leg										
Jumpsuit B	12½	13	13½	14	14½	15½	16	16½	17	17½
Finished back length from base of neck										
Dress A	32	32¼	32½	32¾	33	35¼	35½	36	36¼	36¾
Jumpsuit B	55	55¼	55½	55¾	56	58¼	58½	58¾	59	59¼
Finished back length from waist										
Overskirt C	42	42	42	42	42	42	42	42	42	42
Overskirt D	52	52	52	52	52	52	52	52	52	52

PATTERN MARKINGS

- GRAINLINE:** Place on straight grain of fabric, parallel to selvage or fold.
- FOLDLINE:** Place line on fold of fabric.
- BUTTONHOLE MARKING:** Indicates exact length and placement of buttonholes.
- BUTTON MARKING:** Indicates button placement.
- NOTCHES AND SYMBOLS:** For matching seams and construction details.
- Indicates the Bustline, Waistline, Hip and/or Biceps. Measurements refer to circumference of Finished Garment (Body Measurement + Wearing Ease + Design Ease). Adjust pattern if necessary. The measurement excludes pleats, tucks, darts and seam allowances.
- SEAM ALLOWANCE:** 5/8" (1.5cm) included unless otherwise indicated, but not printed on tissue.

ADJUST IF NECESSARY

- Lengthen or Shorten at adjustment lines (==) or where indicated on pattern. If substantial length is added, you may need to purchase additional fabric.
- TO SHORTEN:** Crease along adjustment line. Make a fold half the amount needed. Tape in place.
- TO LENGTHEN:** Slash between adjustment lines. Spread amount as needed, keeping edges parallel. Tape over paper.
- When Alteration lines are not on tissue, lengthen or shorten at lower edge.

CUTTING AND MARKING

- SHRINK FABRIC** if not labeled pre-shrunk. Press.
- CIRCLE LAYOUT** for View, Size, Fabric Width.
- Use **WITH NAP** layout for fabrics with one-way designs, nap, pile or surface shading. Because most knits have surface shading, a with nap layout is used.
- For **DOUBLE THICKNESS (WITH FOLD)** - fold fabric with right sides together.
- \* DOUBLE THICKNESS (WITHOUT FOLD)** - For fabrics with nap, fold fabric crosswise, right sides together. Mark as shown. Cut along crosswise fold of fabric (A). Turn upper layer 180° so arrows go in same direction and place over lower layer, right sides together (B).
- For **SINGLE THICKNESS** - place fabric right side up. (For Fur Pile fabrics, place pile side down.)
- ★ Cut other pieces first, allowing enough fabric to cut this piece. Open fabric. For "Cut 1" pieces, cut piece once on single layer of fabric with piece face up on right side of fabric.
- Pattern may have cutting lines for several sizes. Select the proper cutting line or pattern pieces for your size.
- Before **CUTTING** place all pieces on fabric according to layout. Pin. (Layouts show approximate position of pattern pieces; position may vary according to your pattern size.) Cut **ACCURATELY**, cutting notches outward.
- Before removing pattern, **TRANSFER MARKINGS** and lines of construction to Wrong Side of fabric, using the Pin and Chalk Pencil Method or Tracing Paper and Dressmaker Wheel. Markings needed on right side of fabric should be thread traced.
- NOTE:** Broken-line boxes (a! b! c!) in layouts represent pieces cut by measurements provided.

CUTTING LAYOUTS

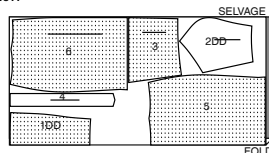
RIGHT SIDE OF PATTERN	WRONG SIDE OF PATTERN	RIGHT SIDE OF FABRIC	WRONG SIDE OF FABRIC

DRESS A

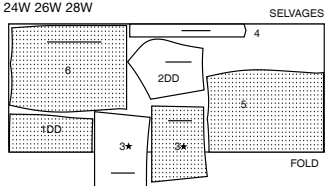
For contrast Overskirt follow same layouts.

- NOTE:** Layouts shown for DD cup.
- FOR A/B CUP:** Substitute piece 1A/B for piece 1DD.
- FOR C CUP:** Substitute piece 1C for piece 1DD.
- FOR D CUP:** Substitute piece 1D for piece 1DD.
- use pieces: 1 2 3 4 5 6

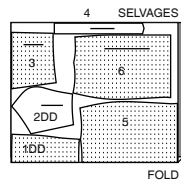
45" (115 cm)  
with nap  
sizes 10 12 14 16 18 20W



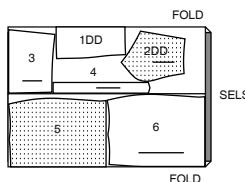
45" (115 cm)  
with nap  
sizes 22W 24W 26W 28W



60" (150 cm)  
with nap  
20W 22W 24W  
sizes 10 12 14 16 18 20W 22W



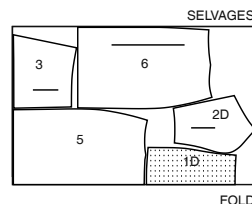
60" (150 cm)  
with nap  
sizes 24W 26W 28W



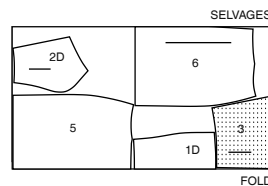
LINING A

use pieces: 1 2 3 4 5 6

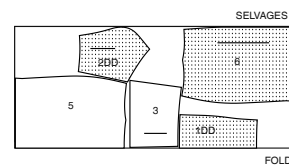
45" (115 cm)  
without nap  
sizes 10 12 14



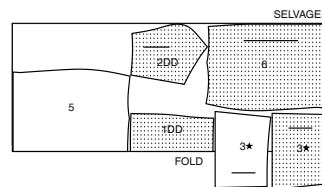
45" (115 cm)  
without nap  
sizes 16 18



45" (115 cm)  
without nap  
sizes 20W 22W 24W



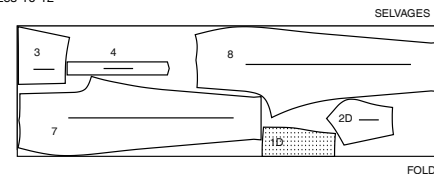
45" (115 cm)  
without nap  
sizes 26W 28W



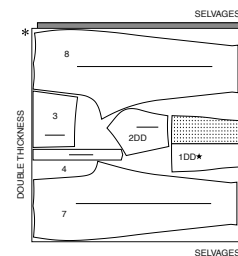
JUMPSUIT B

use pieces: 1 2 3 4 7 8

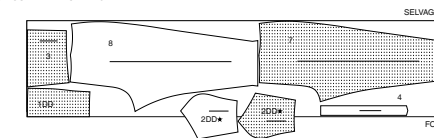
45" (115 cm)  
with nap  
sizes 10 12



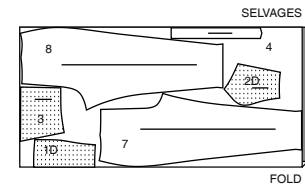
45" (115 cm)  
with nap  
sizes 14 16 18 20W 22W



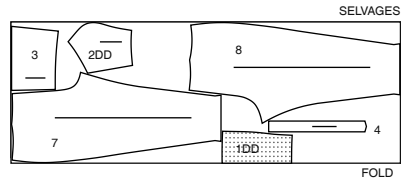
45" (115 cm)  
with nap  
sizes 24W 26W 28W



60" (150 cm)  
with nap  
sizes 10 12 14 16 18



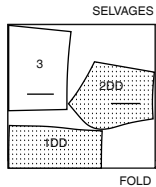
60" (150 cm)  
with nap  
sizes 20W 22W 24W 26W 28W



**LINING (Bodice)**

use pieces: 1 2 3

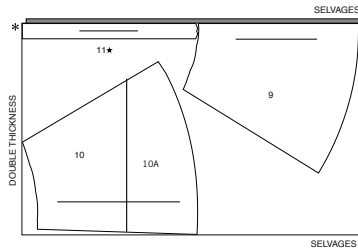
45" (115 cm)  
without nap  
all sizes



**DETACHABLE OVERSKIRT C**

**NOTE:** BEFORE CUTTING FABRIC, JOIN PIECES IN PARENTHESIS TO CORRESPONDING PIECES FOLLOWING INSTRUCTIONS ON TISSUE PATTERN.  
use pieces: 9 10(10A) 11

60" (150 cm)  
with nap  
all sizes

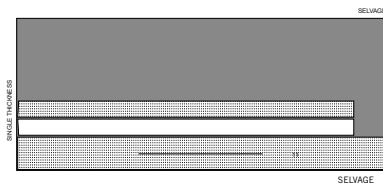


**INTERFACING C, D**

use pieces: 9 11

Using piece 9 as a guide, cut 2 pieces of interfacing 45" x 1-1/2" (115cm x 3.8cm)

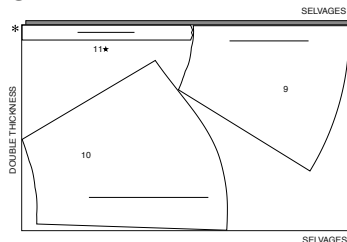
20" (51 cm)  
without nap  
all sizes



**DETACHABLE OVERSKIRT D**

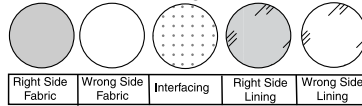
use pieces: 9 10(10A) 11

60" (150 cm)  
with nap  
all sizes



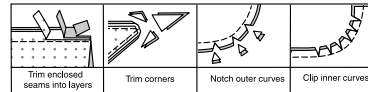
**SEWING INFORMATION**

**FABRIC KEY**



**SEAM ALLOWANCES**

Use 5/8" (1.5cm) seam allowances unless otherwise indicated.



**PIN AND FIT**

Pin or baste seams, RIGHT SIDE TOGETHER, matching notches. Fit garment before stitching major seams.

**PRESS**

Press seam allowances flat; then open unless otherwise stated. Clip where necessary so they lie flat.

**GLOSSARY**

Read **General Directions** on page 1 before you begin.

Sewing methods in **BOLD TYPE** have Sewing Tutorial Video available. Scan **QR CODE** to watch videos:

**DART** – see **Darts**: “sewing flat dart” video.

**DESIGNER HEM** - see **Hems**: “sewing a baby hem” video.

**FINISH** - see **Seams**: “how to finish seam allowances” video.

**SLIP STITCH** – see **Hand Stitching**: “how to slip stitch” video.

**STITCH IN THE DITCH** - see **Machine Stitches**: “how to stitch in the ditch” video.

**STAYSTITCH** - see **Machine Stitches**: “how to do stay-stitching” video.

**UNDERSTITCH** - see **Machine Stitches**: “how to understitch” video.

**PATTERN PIECES WILL BE IDENTIFIED BY NUMBERS THE FIRST TIME THEY ARE USED.**

**STITCH SEAMS WITH RIGHT SIDES TOGETHER UNLESS OTHERWISE STATED.**

**SEWING TUTORIALS**



Build your skills viewing short, easy-to-follow videos at [simplicity.com/sewingtutorials](http://simplicity.com/sewingtutorials)

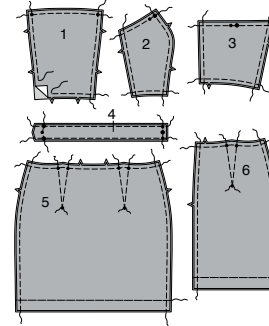
**DRESS A, JUMPSUIT B**

**NOTE:** The first view mentioned will be shown, unless otherwise indicated.

**CONTRAST A**

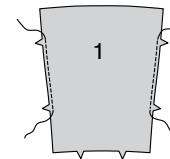
**1.** Working on a flat surface, pin right side of fabric to wrong side of each matching contrast fabric section. Baste through all symbols and all lines of construction, as shown, leaving both ends of thread free for easy removal. For hemline, sew invisibly 1-1/4”(3.2cm) above lower edges.

**NOTE:** Contrast will not be shown in the following illustrations.



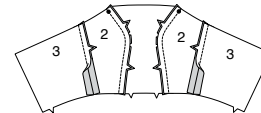
**FRONT AND BACK**

**2. STAYSTITCH** side edges of **BODICE FRONT** (1) between notches.



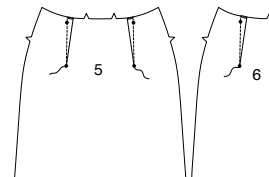
**3.** Pin **BODICE SIDE FRONT** (2) sections to bodice front, matching notches and large dots, clipping front where necessary.

Stitch **BODICE BACK** (3) to bodice side front at sides, matching notches.

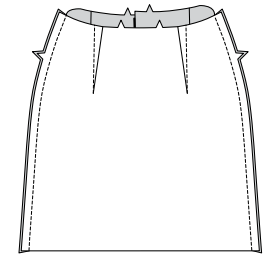


**View A**

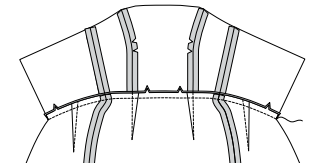
**4.** Stitch **DARTS** in **SKIRT FRONT** (5) and **SKIRT BACK** (6). Press darts toward centers.



**5.** Stitch skirt front and skirt back together at sides.

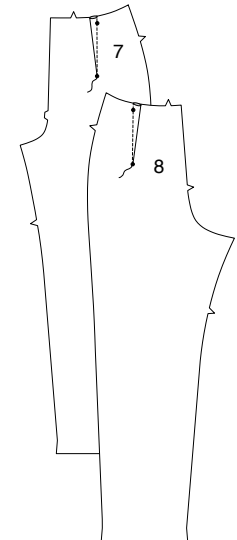


**6.** Stitch skirt to bodice matching center fronts, notches, side seams, and front darts to side front seams. Press seam toward bodice.

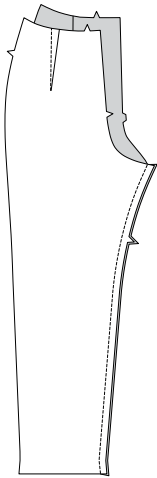


**View B**

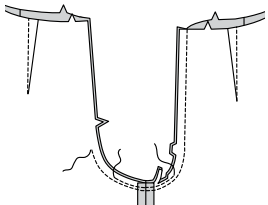
**7.** Stitch **DARTS** in **PANTS FRONT** (8) and **PANTS BACK** (9). Press darts toward centers.



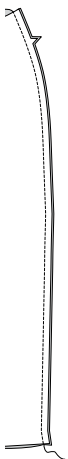
8. Stitch pants front and pants back together at inner leg, stretching back to fit.



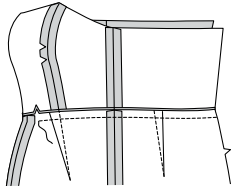
9. Stitch crotch seam, leaving open 3"(7.5cm) below single notch on back. Stitch again 1/4"(6mm) away in seam allowance in curved area. Trim close to second stitching.



10. Stitch front and back together at sides.



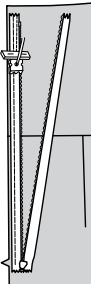
11. Stitch pants to bodice matching center front seams, notches, side seams, and front darts to side front seams. Press seam toward bodice.



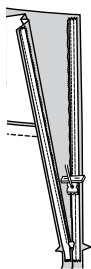
**INVISIBLE ZIPPER**

**NOTE:** Stitch the invisible zipper using an invisible zipper foot. If the zipper is longer than the zipper opening, adjust after the zipper is inserted. For a How to video, see **ZIPPER:** "sewing an invisible zipper".

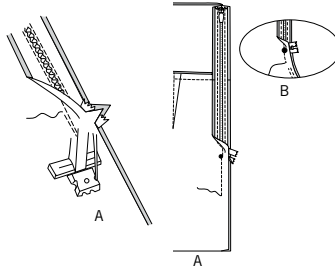
12. Open the zipper and press the tape using a cool iron. On **OUTSIDE**, pin **RIGHT** side of the zipper face down on the **RIGHT** side of the zipper opening. Have the coil along the seam line, the tape within the seam allowance and the top stop 3/4"(2cm) below upper edge, as shown. Hand-baste along center of the tape. Position zipper foot at the top of the zipper with **RIGHT** groove of the foot over coil. Stitch along tape to the notch. Back-stitch to reinforce.



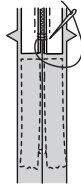
13. Pin the remaining half of the zipper to the **LEFT** side of the zipper opening in same manner. Make sure the upper and lower edges of the garment are even. Hand-baste along the center of the tape. Position zipper foot at the top of the zipper with **LEFT** groove over the coil. Stitch along tape to the notch. Back-stitch to reinforce.



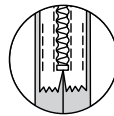
14. Close zipper and check that it is invisible from the **OUTSIDE**. Pull the free ends of the zipper tape away from the seam allowance. Pin remaining center back seam together below zipper. Position zipper foot all the way to the **LEFT** so the needle goes down through the outer notch of the foot. Start stitching seam 1/4"(6mm) above lowest stitch and slightly to the **LEFT**. Stitch seam for about 3"(7.5cm). Stitch remainder of seam using your regular presser foot. For **View B**, stitch remainder of seam connecting with previous stitching on front.



15. If the zipper is longer than the opening, using a strong thread, hand-sew a few small stitches across ends of coils at end of opening. Trim away lower end of zipper tape to within 5/8"(1.5cm) of hand-stitches.

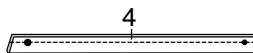


16. If you prefer, open out each seam allowance at end of zipper and stitch tape to seam allowance.



**SHOULDER STRAPS**

17. With right sides together, fold **SHOULDER STRAP** (4) in half lengthwise, having raw edges even. Stitch long edge in a 3/8" (1cm) seam. Trim.

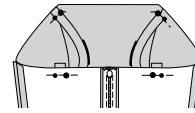


18. Turn. Press. Baste ends.



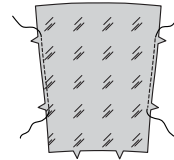
19. On outside, pin front end of straps to bodice front, matching small and large dots. Baste.

Pin back edge of straps to back using a safety pin, matching large and small dots. Try on and adjust as necessary. Baste.



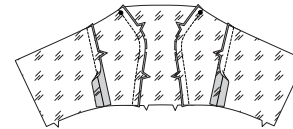
**LINING**

20. **STAYSTITCH** side edges of bodice front **LINING** (1) between notches.



21. Pin bodice side front **LINING** (2) sections to bodice front lining, matching notches and large dots, clipping front where necessary.

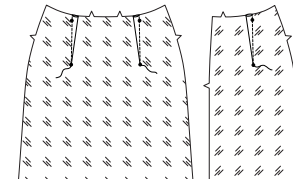
Stitch bodice back **LINING** (3) to bodice side front at sides.



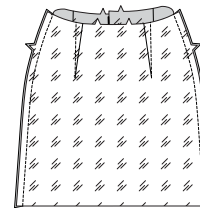
**View A**

**NOTE:** If you haven't done so already, cut away 3/8"(1cm) from lower edge of skirt front **LINING** (5) and skirt back **LINING** (6).

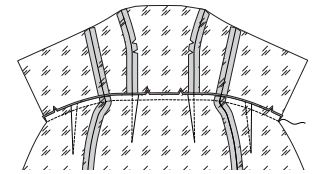
22. Stitch **DARTS** in skirt front **LINING** (5) and skirt back **LINING** (6). Press darts toward centers.



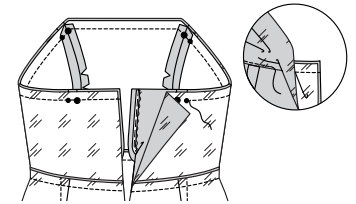
23. Stitch skirt front lining and skirt back lining together at sides.



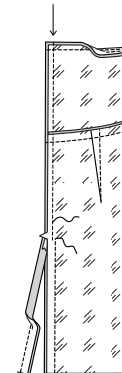
24. Stitch skirt lining to bodice lining matching center fronts, notches, side seams, and front darts to side front seams. Press seam toward bodice.



25. Open out back opening edges of dress, rolling the zipper teeth away from the opening edge. Pin bodice lining to upper edge of bodice, matching center fronts, notches, side seams, and small and large dots, over straps. Stitch upper edge. Trim seam. **UNDERSTITCH** lining.



26. Pin lining and back opening edges together. Using an adjustable zipper foot, stitch 1/2"(1.3cm) from back edges, keeping zipper teeth free. Trim corners. Do not trim center back edge. Keeping skirt free, stitch remainder of lining center back seam below zipper.

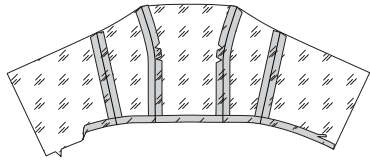


27. Turn lining to inside. Press.

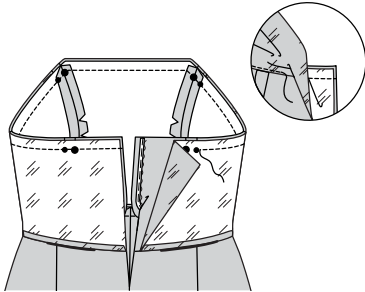


**View B**

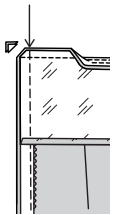
**28.** Turn under 5/8" (1.5cm) on lower edge of bodice lining. Press. Trim pressed edge to 3/8" (1cm).



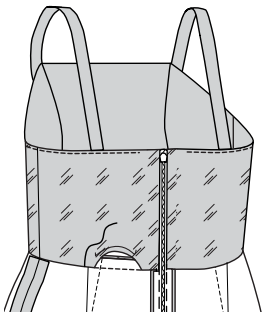
**29.** Open out back opening edges of dress, rolling the zipper teeth away from the opening edge. Pin bodice lining to upper edge of bodice, matching center fronts, notches, side seams, and small and large dots, over straps. Stitch upper edge. Trim seam. **UNDERSTITCH** lining.



**30.** Pin lining and back opening edges together. Using an adjustable zipper foot, stitch 1/2" (1.3cm) from back edges, keeping zipper teeth free. Trim corners. Do not trim center back edge.



**31.** Turn lining to inside. Press. **SLIPSTITCH** lower edge of lining over waist seam.

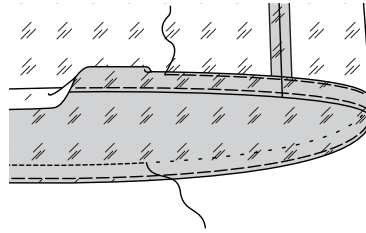


**FINISHING**

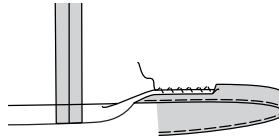
**View A**

**32.** Turn up 1-1/4" (3.2cm) hem on lower edge of lining. Baste close to fold. Trim hem to an even width. Turn under 1/4" (6mm) on raw edge. Press. Baste close to upper pressed edge.

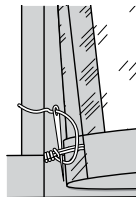
**TOPSTITCH** hem in place along upper basting, as shown.



**33.** Turn up 1-1/4" (3.2cm) hem on lower edge of dress. Baste close to fold. **FINISH** raw edge. Sew hem in place.

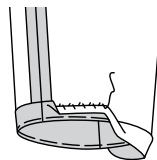


**34.** Make a 1/2" (1.3cm) French tack between lining and garment side seams at lower edge, as shown.



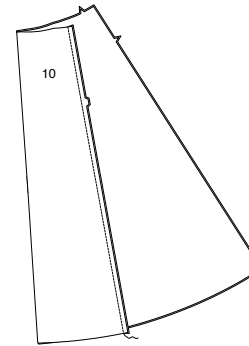
**View B**

**35.** Turn up 1-1/4" (3.2cm) hem on lower edge of pants. Baste close to fold. **FINISH** raw edge. Sew hem in place.

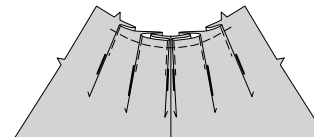


**DETACHABLE SKIRT C, D**

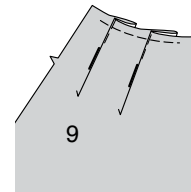
**1.** Stitch center back seam in **BACK** (10).



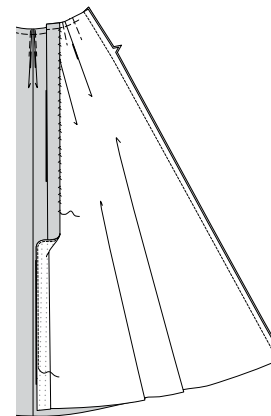
**2.** To make pleats in back, on outside, fold along solid lines. Bring folds to broken lines, baste. Baste across raw edge.



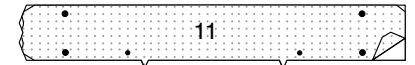
**3.** Make pleats in **FRONT** (9) in same manner.



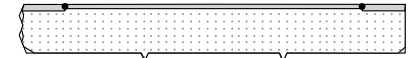
**4.** Fuse **INTERFACING** to front self-facing following manufacturer's instructions. Stitch front and back together at sides. **FINISH** front opening edge of skirt. Turn under front opening along foldline. Press. Hand-sew invisibly in place.



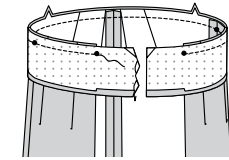
**5.** Trim corners of **INTERFACING** (11) as shown. Fuse **INTERFACING** to wrong side of **WAISTBAND** (11) following manufacturer's instructions.



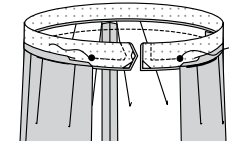
**6.** Turn under 1/2" (1.3cm) on long unnotched edge of waistband. Press. Trim pressed edge to 3/8" (1cm) between large dots.



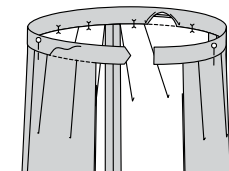
**7.** Pin waistband to skirt, right sides together, matching center backs, notches, large dots, and small dots to side seams. Stitch. Trim. Press seam toward waistband.



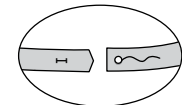
**8.** Open out pressed edge on ends. With right sides together, fold waistband in half lengthwise, matching large dots, having raw edges even. Stitch ends to large dots. Trim.



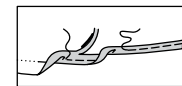
**9.** Turn waistband to inside and ends right side out, press. On inside, pin pressed edge of waistband over seam, placing pins on the outside. **STITCH IN THE DITCH**, catching in pressed edge of waistband on inside.



**10.** Make buttonhole in waistband at marking. Sew button to waistband at marking.



**11.** Make a **DESIGNER HEM** at lower edge of skirt.





# Congrats!

You've completed your sewing adventure

---

**SHARE  
YOUR** LOOK



Post your pattern and tag us  
[@simplicity\\_creative\\_group](#) and [#simplicitypatterns](#)  
for a chance to be featured on our social media.

Look for more PDF patterns at [simplicity.com](https://www.simplicity.com)

Have a question or need help with your sewing project call us at  
1-800-782-0323

**McCall's**  
by **design**<sub>group</sub>

McCall's ©2024 a division of IG Design Group Americas Inc. • Atlanta, GA 30342 USA [www.thedesigngroup.com](http://www.thedesigngroup.com) • All Rights Reserved. [www.mccall.com](http://www.mccall.com) • Made in the U.S.A. Fabriqué aux États-Unis.

To be used for individual private home use only and not for commercial or manufacturing purposes. • A usage privé seulement et non à des fins commerciales ou de production en série. • Para uso privado solamente, no se puede utilizar con propósitos de comercialización o de producción en serie.