

McCall's

M8449



Designed and printed in USA

Scan QR code for a Sew-Along video tutorial.
 Scannez le code QR pour un didacticiel vidéo de couture.



Average

MISSES' DRESSES AND SASH

Suggested Fabrics: Challis, Cotton Blends, Linen, Poplin. **Interfacing:** Lightweight Fusible.

Notions: B: Two ¾" (2cm) buttons. C: Five ¾" (1.5cm) buttons.

Sizes	8	10	12	14	16	18	20	22	24	26
European	34	36	38	40	42	44	46	48	50	52

BODY MEASUREMENTS: Select pattern size based on body measurements

	8	10	12	14	16	18	20	22	24	26
Bust	31½	32½	34	36	38	40	42	44	46	48
Waist	24	25	26½	28	30	32	34	37	39	41
Hip-9" below waist	33½	34½	36	38	40	42	44	46	48	50
Back-neck to waist	15¾	16	16½	16½	16¾	17	17¼	17½	17¾	18

Dress A	45"	2¾	2¾	2¾	2¾	2¾	2¾	3¼	3¼	3¼	Yds.
60"	2½	2½	2½	2½	2½	2½	2½	2½	2½	2½	"

Interfacing	20"	¾	¾	¾	¾	¾	¾	¾	¾	¾	"
Dress B	45"	3¼	3¼	3¼	3¾	3¾	3¾	4¼	4¼	4¼	Yds.
60"	2¾	2¾	2¾	2¾	2¾	2¾	2¾	3	3	3	"

Dress C	45"	3½	3½	3½	3¾	3¾	3¾	4	4	4	4¾	Yds.
60"	2¾	2¾	2¾	2¾	2¾	2¾	2¾	2¾	2¾	2¾	2¾	"

Interfacing	20"	¾	¾	¾	¾	¾	¾	¾	¾	¾	"	
Dress C	45"	3½	3½	3½	3¾	3¾	3¾	4	4	4	4¾	Yds.
60"	2¾	2¾	2¾	2¾	2¾	2¾	2¾	2¾	2¾	2¾	2¾	"

FINISHED GARMENT MEASUREMENTS (Includes Design and Wearing Ease)

A,B,C Bust	44	45	46½	48½	50½	52½	54½	56½	58½	60½	Ins.
A,B,C Waist	46	47	48½	50½	52½	54½	56½	58½	60½	62½	"

Dress A	55½	56½	58	60	62	64	66	68	70	72	Ins.
Dress B	59	60	61½	63½	65½	67½	69½	71½	73½	75½	"
Dress C	63½	64½	66	68	70	72	74	76	78	80	"

Finished back length from base of neck

Dress A	32¾	33	33¼	33½	33¾	34	34¼	34½	34¾	35	Ins.
Dress B	38¾	39	39¼	39½	39¾	40	40¼	40½	40¾	41	"
Dress C	47¼	47½	47¾	48	48¼	48½	48¾	49	49¼	49½	"

*with nap **without nap

Moins Facile

ROBES ET CEINTURE-ÉCHARPE POUR JEUNES FEMMES

Tissus Conseillés: Challis, Cottonnades, Toile de lin, Popeline. **Entoilage:** Thermocollant léger.

Mercierie: B: 2 boutons de 2cm. C: 5 boutons de 1.5cm.

Tailles	8	10	12	14	16	18	20	22	24	26
Françaises	36	38	40	42	44	46	48	50	52	54
Européennes	34	36	38	40	42	44	46	48	50	52

MESURES DU CORPS: Choisissez la taille du patron basée sur les mesures du corps

Poitrine	80	83	87	92	97	102	107	112	117	122	cm
Taille	61	64	67	71	76	81	87	94	99	104	"
Hanches (23cm au-dessous de la taille)	85	88	92	97	102	107	112	117	122	127	cm
Dos du cou à la taille	40	40.5	41.5	42	42.5	43	44	44.5	45	46	"

Robe A	115cm*	2.4	2.5	2.5	2.5	2.5	2.5	2.9	2.9	3.0	m
150cm*	1.9	1.9	1.9	1.9	1.9	1.9	1.9	2.2	2.2	2.2	"

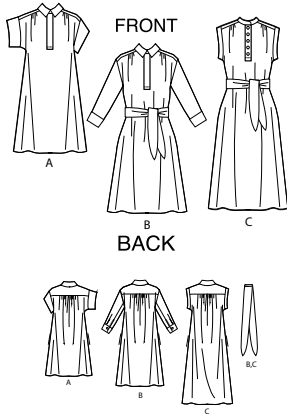
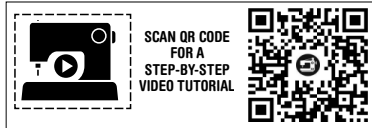
Entoilage	51cm	0.6	0.7	0.7	0.7	0.7	0.7	0.7	0.7	0.8	"
Robe B	115cm*	3.0	3.0	3.0	3.1	3.1	3.2	3.2	3.7	3.8	m
150cm*	2.4	2.4	2.4	2.4	2.4	2.4	2.4	2.7	2.7	2.9	"

Robe C	115cm*	3.2	3.2	3.2	3.2	3.3	3.3	3.5	3.7	3.7	3.7	m
150cm*	2.6	2.6	2.6	2.6	2.6	2.6	2.6	2.6	2.6	2.6	2.6	"

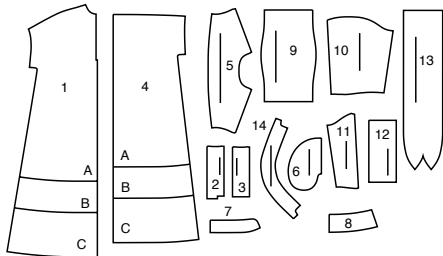
Entoilage	51cm	0.7	0.7	0.7	0.7	0.8	0.8	0.8	0.8	0.8	"	
MESURES DES VÊTEMENTS FINI (Motif et aisance de port compris)	A,B,C Poitrine	112	114	118	123	128	133	138	144	149	154	cm
A,B,C Taille	117	119	123	128	133	138	144	149	154	159	"	
Largeur à l'ourlet	Robe A	141	144	147	152	157	163	168	173	178	183	cm
Robe B	150	152	156	161	166	171	177	182	187	192	"	
Robe C	161	166	168	173	178	183	188	198	193	208	"	
Longueur finie - dos, votre nuque à l'ourlet	Robe A	83	84	84	85	86	86	87	88	88	89	cm
Robe B	98	99	100	100	101	102	102	103	104	104	"	
Robe C	120	121	121	122	123	123	124	124	125	126	"	

*avec sens **sans sens





14 PATTERN PIECES



- 1 Front- A,B,C
- 2 Right Placket- A,B,C
- 3 Left Placket- A,B,C
- 4 Back- A,B,C
- 5 Yoke Back- A,B,C
- 6 Pocket- A,B,C
- 7 Neckband- A,B,C
- 8 Collar- A,B
- 9 Sleeve- A
- 10 Sleeve Front- B
- 11 Sleeve Back- B
- 12 Cuff- B
- 13 Sash- B,C
- 14 Front and Back Band- C

PATTERN MARKINGS

GRAINLINE: Place on straight grain of fabric, parallel to selvage or fold.

FOLDLINE: Place line on fold of fabric.

BUTTONHOLE MARKING: Indicates exact length and placement of buttonholes.

BUTTON MARKING: Indicates button placement.

NOTCHES AND SYMBOLS: For matching seams and construction details.

Indicates the Bustline, Waistline, Hip and/or Biceps. Measurements refer to circumference of Finished Garment (Body Measurement + Wearing Ease + Design Ease). Adjust pattern if necessary. The measurement excludes pleats, tucks, darts and seam allowances.

SEAM ALLOWANCE: 5/8" (1.5cm) included unless otherwise indicated, but not printed on tissue.

ADJUST IF NECESSARY

Lengthen or Shorten at adjustment lines (==) or where indicated on pattern. If substantial length is added, you may need to purchase additional fabric.

TO SHORTEN: Crease along adjustment line. Make a fold half the amount needed. Tape in place.

TO LENGTHEN: Slash between adjustment lines. Spread amount as needed, keeping edges parallel. Tape over paper.

When Alteration lines are not on tissue, lengthen or shorten at lower edge.

CUTTING AND MARKING

SHRINK FABRIC if not labeled pre-shrunk. Press.

CIRCLE LAYOUT for View, Size, Fabric Width.

Use **WITH NAP** layout for fabrics with one-way designs, nap, pile or surface shading. Because most knits have surface shading, a with nap layout is used.

For **DOUBLE THICKNESS (WITH FOLD)** - fold fabric with right sides together.

***DOUBLE THICKNESS (WITHOUT FOLD)** - For fabrics with nap, fold fabric crosswise, right sides together. Mark as shown. Cut along crosswise fold of fabric (A). Turn upper layer 180° so arrows go in same direction and place over lower layer, right sides together (B).

For **SINGLE THICKNESS** - place fabric right side up. (For Fur Pile fabrics, place pile side down.)

★ Cut other pieces first, allowing enough fabric to cut this piece. Open fabric. For "Cut 1" pieces, cut piece once on single layer of fabric with piece face up on right side of fabric.

Pattern may have cutting lines for several sizes. Select the proper cutting line or pattern pieces for your size.

Before **CUTTING** place all pieces on fabric according to layout. Pin. (Layouts show approximate position of pattern pieces; position may vary according to your pattern size.) Cut **ACCURATELY**, cutting notches outward.

Before removing pattern, **TRANSFER MARKINGS** and lines of construction to Wrong Side of fabric, using the Pin and Chalk Pencil method or Tracing Paper and Dressmaker Wheel. Markings needed on right side of fabric should be thread traced.

NOTE: Broken-line boxes (a| b| c|) in layouts represent pieces cut by measurements provided.

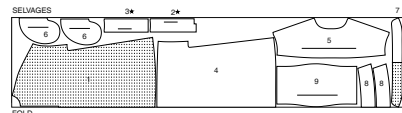
CUTTING LAYOUTS

RIGHT SIDE OF PATTERN	WRONG SIDE OF PATTERN	RIGHT SIDE OF FABRIC	WRONG SIDE OF FABRIC
-----------------------	-----------------------	----------------------	----------------------

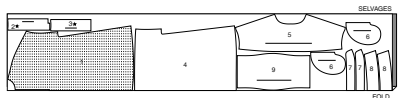
DRESS A

use pieces: 1 2 3 4 5 6 7 8 9

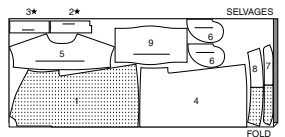
45" (115 cm) with nap
sizes 8 10 12 14 16 18 20



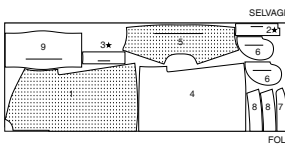
45" (115 cm) with nap
sizes 22 24 26



60" (150 cm) with nap
sizes 8 10 12 14 16 18 20



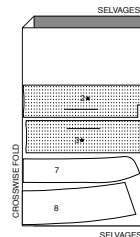
60" (150 cm) with nap
sizes 22 24 26



INTERFACING A

use pieces: 2 3 7 8

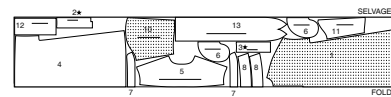
20" (51 cm) without nap
all sizes



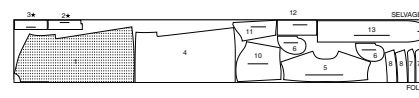
DRESS B

use pieces: 1 2 3 4 5 6 7 8 10 11 12 13

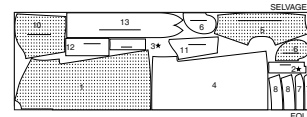
45" (115 cm) with nap
sizes 8 10 12 14 16 18 20



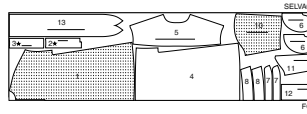
45" (115 cm) with nap
sizes 22 24 26



60" (150 cm) with nap
sizes 8 10 12 14 16 18 20



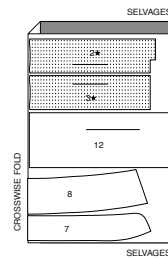
60" (150 cm) with nap
sizes 22 24 26



INTERFACING B

use pieces: 2 3 7 8 12

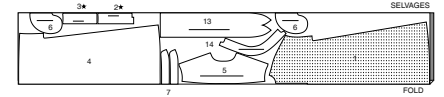
20" (51 cm) without nap
all sizes



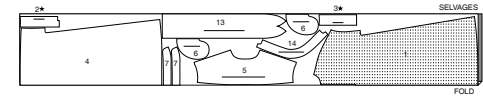
DRESS C

use pieces: 1 2 3 4 5 6 7 13 14

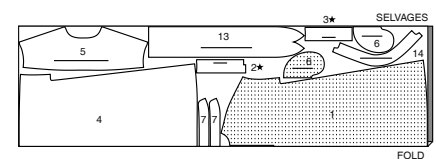
45" (115 cm) with nap
sizes 8 10 12 14 16 18



45" (115 cm) with nap
sizes 22 24 26



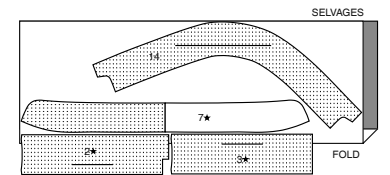
60" (150 cm) with nap
all sizes



INTERFACING C

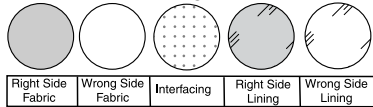
use pieces: 2 3 7 14

20" (51 cm) without nap
all sizes



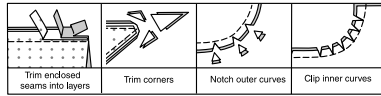
SEWING INFORMATION

FABRIC KEY



SEAM ALLOWANCES

Use 1/4" (6mm) seam allowances unless otherwise indicated.



PIN AND FIT

Pin or baste seams, **RIGHT SIDE TOGETHER**, matching notches. Fit garment before stitching major seams.

PRESS

Press seam allowances flat; then open unless otherwise stated. Clip where necessary so they lie flat.

GLOSSARY

Sewing terms appearing in **BOLD TYPE** in Sewing Instructions are explained below.

GATHER - Stitch along seamline and again 1/4" (6mm) away in seam allowance, using long machine stitches. Pull thread ends when adjusting to fit.

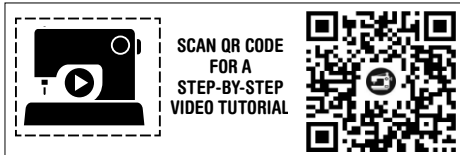
REINFORCE - Stitch along seamline where indicated in sewing instructions, using small machine stitches.

SLIPSTITCH - Slide needle through a folded edge, then pick up a thread of underneath fabric.

STAYSTITCH - Stitch 1/8" (3mm) from seamline in seam allowance (usually 1/2" (1.3cm) from raw edge).

PATTERN PIECES WILL BE IDENTIFIED BY NUMBERS THE FIRST TIME THEY ARE USED.

STITCH SEAMS WITH RIGHT SIDES TOGETHER UNLESS OTHERWISE STATED.

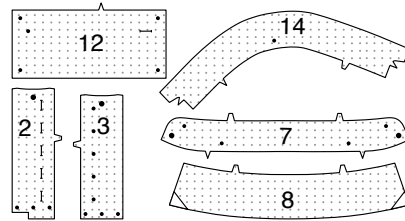


DRESS A, B, C

NOTE: Under each sub-heading, the first view will be illustrated, unless otherwise illustrated.

INTERFACING

1. Trim corners of **INTERFACING**, as shown. Fuse interfacing to wrong side of each matching **FABRIC** section, following manufacturer's instructions.

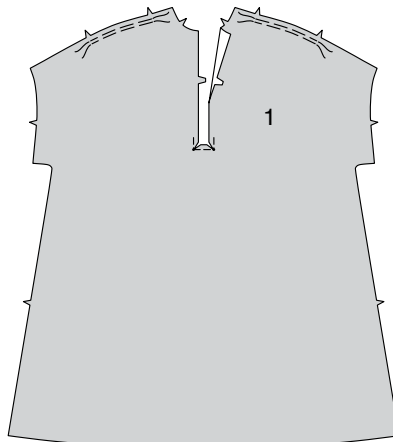


FRONT

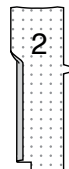
RIGHT PLACKET

2. **GATHER** upper edge of **FRONT** (1) between notches.

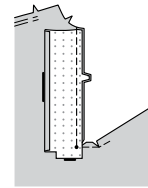
REINFORCE inner corners of front, pivoting at small dots. Slash front diagonally to small dots.



3. Press under 3/8" (1cm) on long unnotched edge of **RIGHT PLACKET** (2).

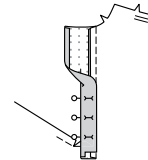


4. Pin placket to right front opening, right sides together, matching notches and small dots. Stitch from upper edge to small dot in a 3/8" (1cm) seam. Press seam toward placket.



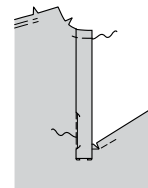
5. Turn placket to inside, folding on foldline; press.

Pin pressed edge just over seam.



6. **Stitch-in-the-ditch**- Working on the **RIGHT** side of the fabric, "stitch-in-the-ditch", (in the groove where the placket joins the front), being sure to catch in the underneath layer of placket in the stitching.

Baste across upper edge.

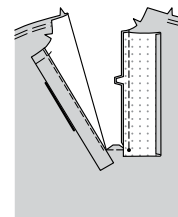


LEFT PLACKET

7. Press under 3/8" (1cm) on long unnotched edge of **LEFT PLACKET** (3).

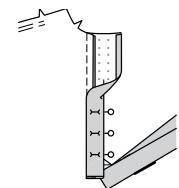


8. Pin placket to left front opening, right sides together, matching notches and small dots. Stitch from upper edge to small dot in a 3/8" (1cm) seam. Press seam toward placket.

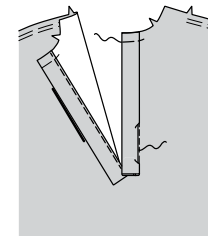


9. Turn placket to inside, folding on foldline; press.

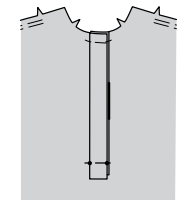
Pin pressed edge just over seam.



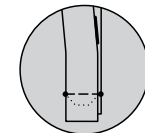
10. **Stitch-in-the-ditch**- Working on the **RIGHT** side of the fabric, "stitch-in-the-ditch", (in the groove where the placket joins the front), being sure to catch in the underneath layer of placket in the stitching. Baste across upper edge.



11. On outside, lap right placket over left at lower ends, matching centers and small dots. Turn front down so wrong sides are together. Pin lower edge of placket to clipped edges, matching small dots. Baste lower edges together, keeping front free.

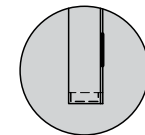


12. **Stitch** placket to front along stitching line, stitching through clipped edge. Press placket and clipped edge down.



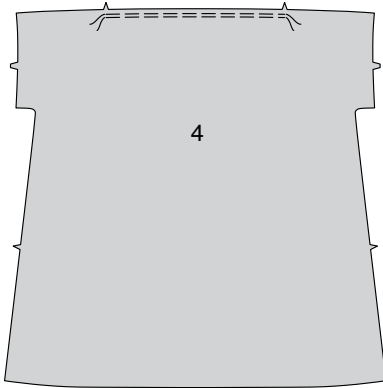
13. Press under 3/8" (1cm) on lower edge of right placket, covering lower ends. Pin to front.

On outside, stitch placket close to pressed ends and side edges, connecting with stitching line, through all layers.

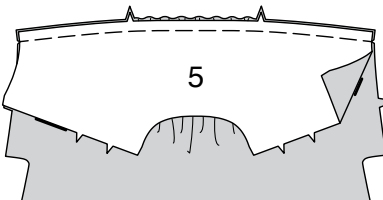


BACK AND YOKE

14. GATHER upper edge of BACK (4) between notches.

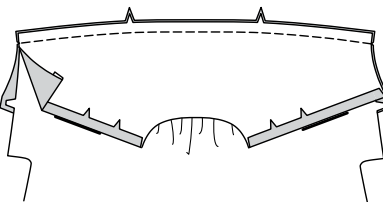


15. With right sides together, pin one YOKE BACK (5) section to back, matching notches and centers. Adjust gathers; baste. (Remaining yoke back section will be used as facing.)

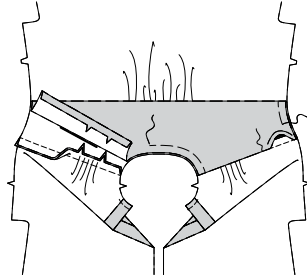


16. Press under 5/8" (1.5cm) on forward shoulder edges of yoke back FACING (5). Trim pressed edge to 3/8" (1cm).

Pin right side of yoke facing to wrong side of back, matching notches and centers. Stitch through all layers; trim seams. Press yoke and facing upward.



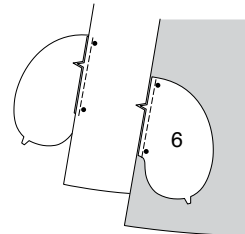
17. Pin front to yoke at forward shoulders, right sides together, matching notches. Adjust gathers. Baste, keeping yoke facing free. Stitch. Press seams toward yoke.
Pin pressed edges of yoke facing over forward shoulder seams and **SLIPSTITCH** in place. Machine-baste raw edges together.



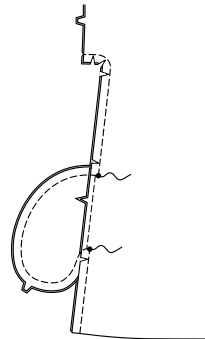
POCKETS AND UNDERARM SEAMS

NOTE: Apply pockets to front and back as follows:

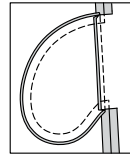
18. With right sides together, pin pocket to dress, matching large dots, having raw edges even. Stitch in a 3/8" (1cm) seam. Press seam toward pocket, pressing pocket out.



19. Pin front to back at underarm seams, matching large dots. In one continuous stitching, stitch underarm seams and pockets, squaring stitching at large dots. Stitch underarm curve again along previous stitching. Clip dress back seam allowance at ends of pocket, as shown. Press seam open above and below clips, clipping underarm seam where necessary.

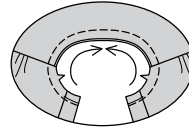


20. Press pocket toward front.



COLLAR AND NECKBAND A, B

21. STAYSTITCH neck edge of dress between large dots in direction of arrows.



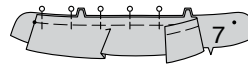
22. Pin COLLAR (8) sections, right sides together. Stitch along unnotched edges; trim seams.



23. Turn right side out; press. Baste raw edges together.



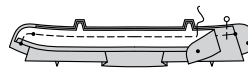
24. Pin uninterfaced side of collar to interfaced NECKBAND (7) section between small dots. Baste. (Uninterfaced neckband section will be used as facing.)



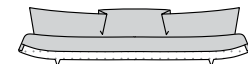
25. Turn under 5/8" (1.5cm) on single notched edge of neckband FACING (7). Press, easing in fullness. Trim pressed seam allowance to 3/8" (1cm).



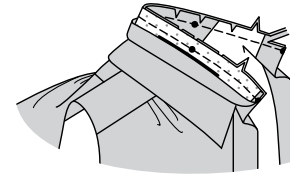
26. Pin neckband facing to neckband (over collar), right sides together. Stitch along upper and front edges; trim seams.



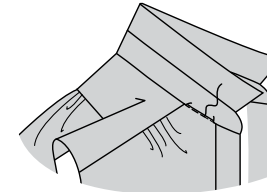
27. Turn right side out; press.



28. Pin neckband to neck edge, right sides together, matching notches, center backs, small dots to forward shoulder seams and large dots, having front edges even. Baste, clipping neck curve of dress where necessary. Stitch, keeping pressed edge free. Trim seams. Clip curves. Press seam toward neckband.

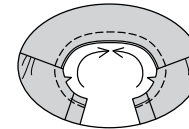


29. Pin pressed edge of neckband just over seam. Stitch-in-the-ditch- Working on the RIGHT side of the fabric, "stitch-in-the-ditch", (in the groove where the neckband joins the dress), being sure to catch in the pressed edge of neckband facing in the stitching.



NECKBAND C

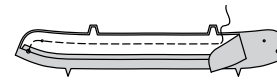
30. STAYSTITCH neck edge of dress between large dots in direction of arrows.



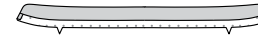
31. Press under 5/8" (1.5cm) on single notched edge of uninterfaced NECKBAND (7) facing section, easing in fullness. Trim pressed edge to 3/8" (1cm).



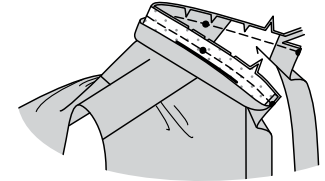
32. Pin interfaced neckband to neckband facing, right sides together. Stitch along upper and front edges. Trim seams; clip curves.



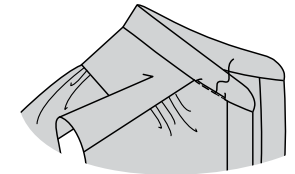
33. Turn right side out; press.



34. Pin neckband to dress neck edge, right sides together, matching center backs, small dot to forward shoulder seam and large dots. Baste, clipping neck curve of dress where necessary. Stitch, keeping pressed edge free. Trim seams; press toward neckband.

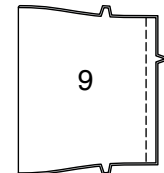


35. Pin pressed edge of neckband facing just over seam. Stitch-in-the-ditch- Working on the RIGHT side of the fabric, "stitch-in-the-ditch", (in the groove where the neckband joins the dress), being sure to catch in the pressed edge of neck band facing in the stitching.

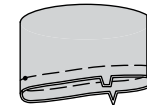


SLEEVE A

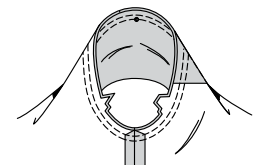
36. With right sides together, stitch short ends of SLEEVE (9), matching notches.



37. Fold sleeve on foldline, wrong sides together, matching notches, seams and dots. Baste raw edges together.

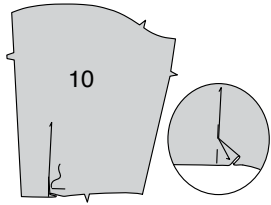


38. With right sides together, pin sleeve to armhole, matching notches, seams and dots. Stitch. Stitch again 1/4" (6mm) away in seam allowances. Trim close to second stitching. Turn seams toward sleeve, turning sleeve down.

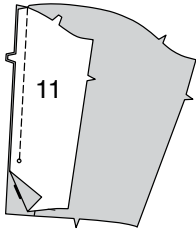


SLEEVE B

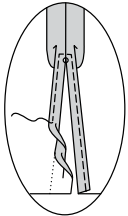
39. To make pleat on lower edge of SLEEVE FRONT (10), on OUTSIDE, fold along solid line. Bring fold to broken line in direction of arrow; pin. Baste across raw edge.



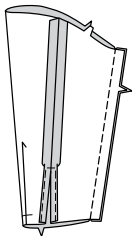
40. With right sides together, pin SLEEVE BACK (11) to sleeve front, matching large dots. Stitch, leaving open below large dot.



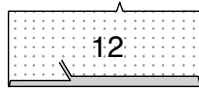
41. Press under 5/8" (1.5cm) on slit opening edges. Press under 1/4" (6mm) on raw edge; stitch, squaring stitching above opening.



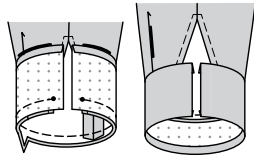
42. Stitch remaining sleeve seam.



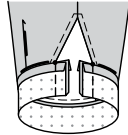
43. Press under 5/8" (1.5cm) long unnotched edge of CUFF (12). Trim pressed edge to 3/8" (1cm).



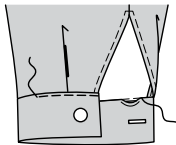
44. Pin cuff to sleeve, matching notches and dots. Stitch. Trim seams. Press seam toward cuff, turning cuff out.



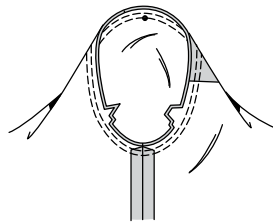
45. Fold cuff along foldline, right sides together. Stitch ends; trim seams.



46. Turn cuff right side out. SLIPSTITCH pressed edge over seam; press. Stitch close to pressed edge of cuff. Make buttonhole in cuff at marking. Sew button to cuff at dot.



47. With right sides together, pin sleeve into armhole, matching underarm seams and notches; baste. Stitch. Stitch again 1/4" (6mm) away in seam allowance. Trim close to second stitching. Turn seam toward sleeve.

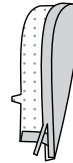


FRONT AND BACK BAND C

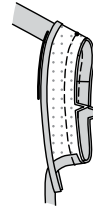
48. With right sides together, stitch short ends of FRONT AND BACK BAND (14).



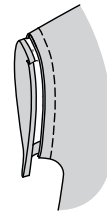
49. Press under 5/8" (1.5cm) on unnotched edge of band, easing where necessary. Trim pressed edge to 3/8" (1cm).



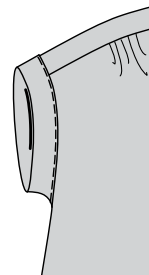
50. Pin right side of band to wrong side of sleeve, matching notches, side seams and dots to forward shoulder seam. Stitch; clip curves; trim seams.



51. Press seam toward band, turning band out.



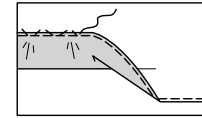
52. Pin pressed edge band to sleeve just over seam. Stitch close to pressed edge of band.



FINISHING

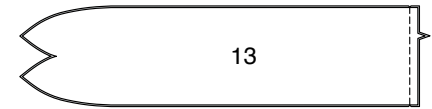
HEM

53. Turn up a 5/8" (1.5cm) hem on lower edge of dress. FINISH raw edge. Hand-sew in place, easing in fullness, if necessary; press.

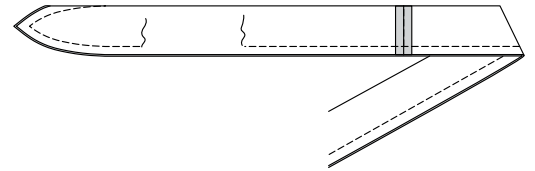


SASH B, C

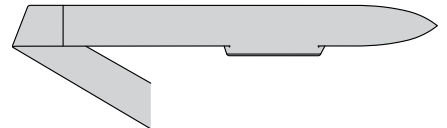
54. Stitch SASH (13) sections, right sides together, along notched edge.



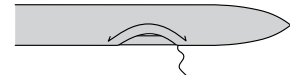
55. With right sides together, fold sash on foldline. Stitch, continuing along stitching line, leaving an opening for turning. Trim corners and seams.



56. Turn sash right side out; press.

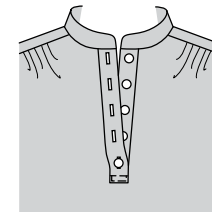


57. SLIPSTITCH opening edges together.



BUTTONHOLES AND BUTTONS C

58. Make buttonholes in right placket at markings. Sew buttons to left placket at markings.





Congrats!

You've completed your sewing adventure

**SHARE
YOUR** LOOK



Post your pattern and tag us
[@simplicity_creative_group](#) and [#simplicitypatterns](#)
for a chance to be featured on our social media.

Look for more PDF patterns at [simplicity.com](#)

Have a question or need help with your sewing project call us at
1-800-782-0323

McCall's
by **design**_{group}

McCall's ©2024 a division of IG Design Group Americas Inc. • Atlanta, GA 30342 USA [www.thedesigngroup.com](#) • All Rights Reserved. [www.mccall.com](#) • Made in the U.S.A. Fabriqué aux États-Unis.
To be used for individual private home use only and not for commercial or manufacturing purposes. • A usage privé seulement et non à des fins commerciales ou de production en série. • Para uso privado solamente, no se puede utilizar con propósitos de comercialización o de producción en serie.