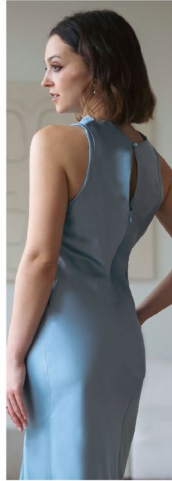


McCall's

M8446

Brandi
JOAN



Scan QR code for a **Sew-Along** video tutorial.
Scannez le code QR pour un didacticiel vidéo de couture.



Designed and
printed in USA

Average

MISSES' DRESS

Suggested Fabrics: Challis, Charmeuse, Crepes, Stable Knits. **Interfacing:** Lightweight Fusible.

Notions: One 18" (46cm) invisible zipper, one 3/8" (1cm) button.

Sizes	4	6	8	10	12	14	16	18	20	22
European	30	32	34	36	38	40	42	44	46	48

BODY MEASUREMENTS: Select pattern size based on body measurements

Bust	29½	30½	31½	32½	34	36	38	40	42	44	Ins.
Waist	22	23	24	25	26½	28	30	32	34	37	"
Hip-9" below waist	31½	32½	33½	34½	36	38	40	42	44	46	"
Back-neck to waist	15¼	15½	15¾	16	16¼	16½	16¾	17	17¼	17½	"

Dress A

60"* 2½ 2½ 2½ 3 3 3 3½ 3½ 3½ 3½ Yds.

Interfacing: 20" - ¾ yd.

FINISHED GARMENT MEASUREMENTS (Includes Design and Wearing Ease)

Bust	33	34	35	36	37½	39½	41½	43½	45½	47½	Ins.
Waist	27½	28½	29½	30½	32	34	36	38	40	42	"
Hip	34	35	36	37	38½	40½	42½	44½	46½	48½	"
Width, lower edge											
Dress	36	37	38	39	40½	42½	44½	46½	48½	50½	Ins.
Finished back length from base of neck											
Dress	57¼	57½	57¾	58	58¼	58½	58¾	59	59¼	59½	Ins.

*with nap **without nap

Moins Facile

ROBE POUR JEUNES FEMMES

Tissus Conseillés: Challis, Charmeuse, Crepes, Tricot stables. **Entoilage:** Thermocollant léger.

Mercurie: 1 fermeture à glissière invisible de 46cm, 1 bouton de 1cm.

Tailles	4	6	8	10	12	14	16	18	20	22
Françaises	32	34	36	38	40	42	44	46	48	50
Européen	30	32	34	36	38	40	42	44	46	48

MESURES DU CORPS: Choisissez la taille du patron basée sur les mesures du corps

Poitrine	75	78	80	83	87	92	97	102	107	112	cm
Taille	56	58	61	64	67	71	76	81	87	94	"

Hanches (23cm au-dessous de la taille)

	80	83	85	88	92	97	102	107	112	117	cm
Dos du cou à la taille	39	39.5	40	40.5	41.5	42	42.5	43	44	44.5	"

Robe A

150cm* 2.6 2.6 2.6 2.7 2.7 2.7 2.7 2.9 2.9 3.0 m

Entoilage: 51cm - 0.3m

MESURES DES VÊTEMENTS FINI (Motif et aisance de port compris)

Poitrine	84	86	89	91	95	100	105	110	116	121	cm
Taille	70	72	75	77	81	86	91	97	102	107	"
Hanches	86	89	91	94	98	103	108	113	118	123	"
Largeur à l'ourlet											
Robe	91	94	97	99	103	108	113	118	123	128	cm
Longueur finie – dos, votre nuque à l'ourlet											
Robe	145	146	147	147	148	149	149	150	150	151	cm

*avec sens **sans sens



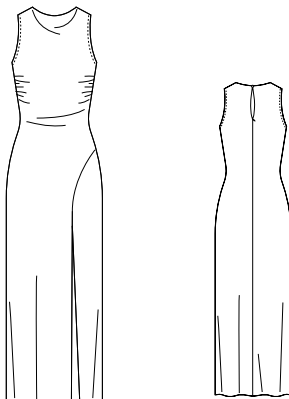
M8446

Page 1 of 3

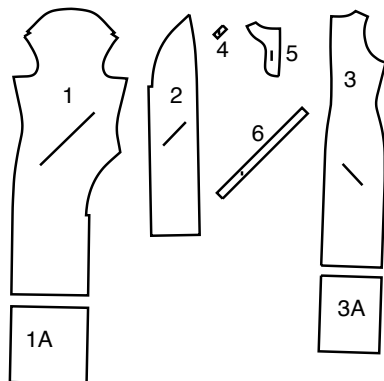
McCall's®

English

1-800-782-0323

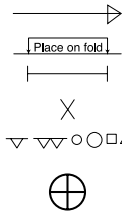
SCAN QR CODE
FOR A
STEP-BY-STEP
VIDEO TUTORIAL

6 PATTERN PIECES



- 1(1A) Front
2 Left Side Front
3(3A) Back
4 Loop
5 Back Facing
6 Armhole Facing

PATTERN MARKINGS

**GRAINLINE:** Place on straight grain of fabric, parallel to selvage or fold.**FOLDLINE:** Place line on fold of fabric.**BUTTONHOLE MARKING:** Indicates exact length and placement of buttonholes.**BUTTON MARKING:** Indicates button placement.**NOTCHES AND SYMBOLS:** For matching seams and construction details.

Indicates the Bustline, Waistline, Hip and/or Biceps. Measurements refer to circumference of Finished Garment (Body Measurement + Wearing Ease + Design Ease). Adjust pattern if necessary. The measurement excludes pleats, tucks, darts and seam allowances.

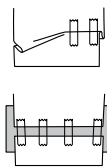
SEAM ALLOWANCE: 5/8" (1.5cm) included unless otherwise indicated, but not printed on tissue.

ADJUST IF NECESSARY

Lengthen or Shorten at adjustment lines (==) or where indicated on pattern. If substantial length is added, you may need to purchase additional fabric.

TO SHORTEN: Crease along adjustment line. Make a fold half the amount needed. Tape in place.**TO LENGTHEN:** Slash between adjustment lines. Spread amount as needed, keeping edges parallel. Tape over paper.

When Alteration lines are not on tissue, lengthen or shorten at lower edge.

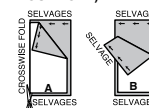


CUTTING AND MARKING

SHRINK FABRIC if not labeled pre-shrunk. Press.**CIRCLE LAYOUT** for View, Size, Fabric Width.Use **WITH NAP** layout for fabrics with one-way designs, nap, pile or surface shading. Because most knits have surface shading, a with nap layout is used.For **DOUBLE THICKNESS (WITH FOLD)** - fold fabric with right sides together.*** DOUBLE THICKNESS (WITHOUT FOLD)** - For fabrics with nap, fold fabric crosswise, right sides together. Mark as shown. Cut along crosswise fold of fabric (A). Turn upper layer 180° so arrows go in same direction and place over lower layer, right sides together (B).For **SINGLE THICKNESS** - place fabric right side up. (For Fur Pile fabrics, place pile side down.)

★ Cut other pieces first, allowing enough fabric to cut this piece. Open fabric. For "Cut 1" pieces, cut piece once on single layer of fabric with piece face up on right side of fabric.

Pattern may have cutting lines for several sizes. Select the proper cutting line or pattern pieces for your size.

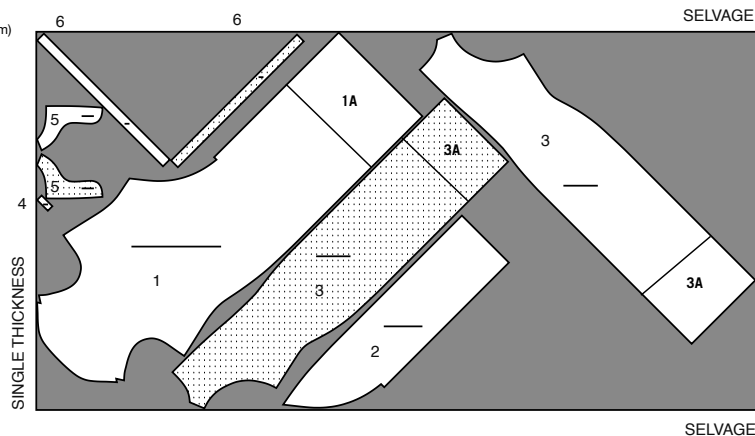
Before **CUTTING** place all pieces on fabric according to layout. Pin. (**Layouts show approximate position of pattern pieces; position may vary according to your pattern size.**) Cut **ACCURATELY**, cutting notches outward.Before removing pattern, **TRANSFER MARKINGS** and lines of construction to Wrong Side of fabric, using the Pin and Chalk Pencil method or Tracing Paper and Dressmaker Wheel. Markings needed on right side of fabric should be thread traced.**NOTE:** Broken-line boxes (a! b! c!) in layouts represent pieces cut by measurements provided.

CUTTING LAYOUTS

RIGHT SIDE OF PATTERN	WRONG SIDE OF PATTERN	RIGHT SIDE OF FABRIC	WRONG SIDE OF FABRIC
--------------------------	--------------------------	-------------------------	-------------------------

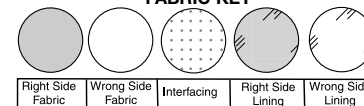
DRESS

use pieces: 1 (1A) 2 3 (3A) 4 5 6

NOTE: BEFORE CUTTING FABRIC, JOIN PIECES IN PARENTHESIS TO CORRESPONDING PIECES FOLLOWING INSTRUCTIONS ON TISSUE PATTERN.60" (150 cm)
with nap
all sizes

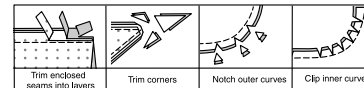
SEWING INFORMATION

FABRIC KEY



SEAM ALLOWANCES

Use 1/4" (6mm) seam allowances unless otherwise indicated.



PIN AND FIT

Pin or baste seams, **RIGHT SIDE TOGETHER**, matching notches. Fit garment before stitching major seams.

PRESS

Press seam allowances flat; then open unless otherwise stated. Clip where necessary so they lie flat.

GLOSSARY

Read **General Directions** on page 1 before you begin.**FINISH** - Stitch 1/4" (6mm) from raw edge and finish with one of the following: (1) Pink OR (2) Overcast OR (3) Turn in along stitching and stitch close to fold OR (4) Overlock.**GATHER** - Stitch along seamline and again 1/4" (6mm) away in seam allowance, using long machine stitches. Pull thread ends when adjusting to fit.**SLIPSTITCH** - Slide needle through a folded edge, then pick up a thread of underneath fabric.**STAYSTITCH** - Stitch 1/8" (3mm) from seamline in seam allowance (usually 1/2" (13mm) from raw edge).**UNDERSTITCH** - Open out facing or underside of garment; stitch to seam allowance close to seam.**PATTERN PIECES WILL BE IDENTIFIED BY NUMBERS THE FIRST TIME THEY ARE USED.****STITCH SEAMS WITH RIGHT SIDES TOGETHER UNLESS OTHERWISE STATED.**SCAN QR CODE
FOR A
STEP-BY-STEP
VIDEO TUTORIAL

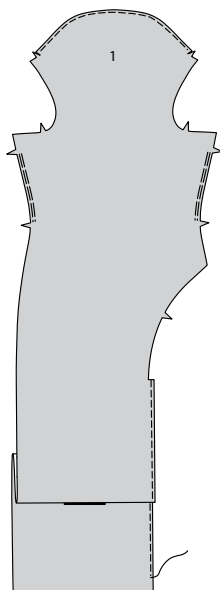
DRESS

FRONT AND BACK

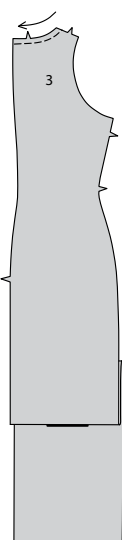
NOTE: The section of the front above the foldline will be used and referred to as the "self-facing" and will form the cowl neckline.

- 1.** GATHER side edges of FRONT (1) between notches.
FINISH upper curved edge of self-facing and long edge of slit extension.

TIP- For stable knits, edges of facing and slit can be left raw.

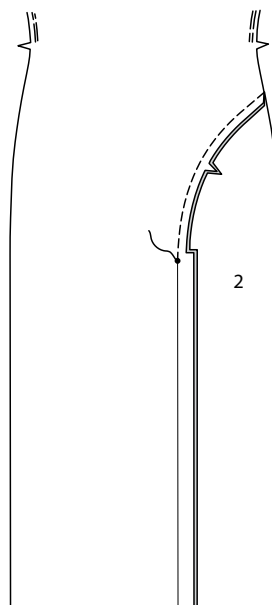


- 2.** STAYSTITCH neck edge of BACK (3) in direction of arrow.

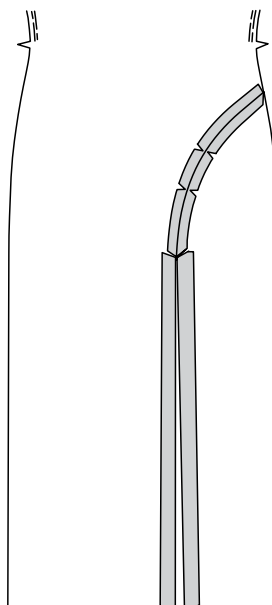


- 3.** **FINISH** long edge of slit extension on LEFT SIDE FRONT (12). Pin left side front to front, matching notches and large dots.

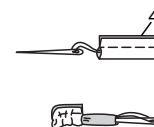
Stitch seam above large dot.



- 4.** Press seam allowances open, pressing slit extensions to inside along foldlines, forming facings. Clip curves where necessary.



- 5.** Fold LOOP (4) in half, lengthwise, right sides together. Stitch a scant 1/4" (6mm) from fold edge, stretching loop while stitching. With a needle, attach a strong thread to one end of loop. Draw needle eye forward, through fold, turning loop RIGHT side out.

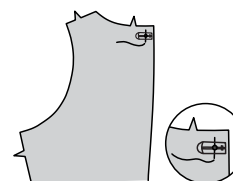


- 6.** To keep ends of loop together, hand-tack inner edges within seam allowance.



- 7.** On outside, baste loop to left back at small dot, having raw edges even and clearing seam allowance on neck edge.

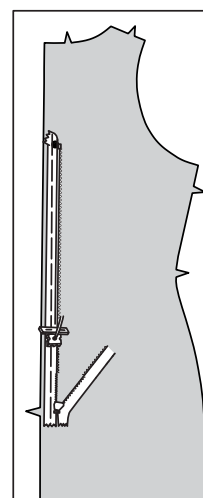
NOTE: Use special invisible zipper foot when stitching invisible zipper.



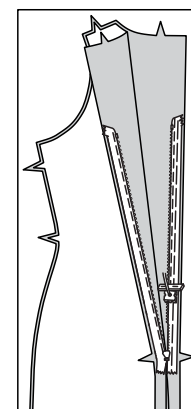
- 8.** Open zipper and press tape flat on WRONG side unrolling the coils. Do not press the coils. (Use a low iron setting.)

On OUTSIDE, pin RIGHT side of zipper face down on RIGHT side of zipper opening. Have the coil along the seam line, the tape within the seam allowance and the top stop at large dot, as shown. Turn upper edge of tape toward raw edge at large dot.

Hand-baste along center of tape. Position zipper foot at top of zipper with RIGHT groove of foot over coil. Stitch along tape to notch. Back-stitch to reinforce.

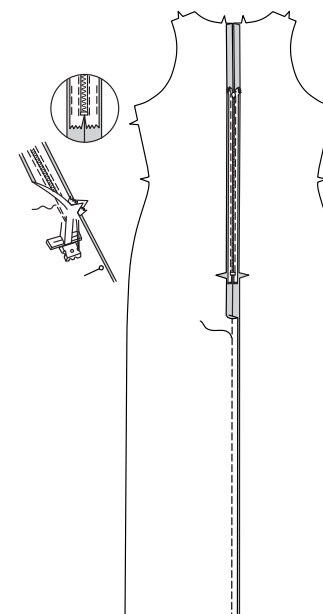


- 9.** Pin remaining half of zipper to LEFT side of zipper opening in same manner, turning upper edge of tape toward raw edge at large dot. Make sure upper and lower edges of back are even. Hand-baste along center of the tape. Position zipper foot at top of zipper with LEFT groove over coil. Stitch along tape to notch. Back-stitch to reinforce.



- 10.** Close zipper and check that it is invisible from OUTSIDE.

Pull free ends of zipper tape away from seam allowance. Pin remaining center back seam together below zipper. Position zipper foot all the way to the LEFT so the needle goes down through outer notch of foot. Start stitching seam 1/4" (6mm) above lowest stitch and slightly to the LEFT. Stitch seam for about 3" (7.5cm). Stitch remainder of seam using your regular presser foot. If you prefer, open out each seam allowance at end of zipper and stitch tape to seam allowance.



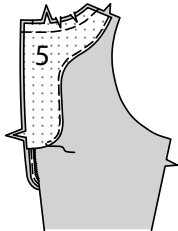
FACINGS AND SIDE SEAMS

11. Apply fusible interfacing to wrong side of BACK FACING (5) sections, following manufacturer's directions.

FINISH curved unnotched edge.

With **RIGHT** sides together and raw edges even, pin facing to back neck edge, matching small and large dots; stitch neck edge.

Trim seam; clip curves.



12. Pin back opening edges together, matching large dots, having raw edges even.

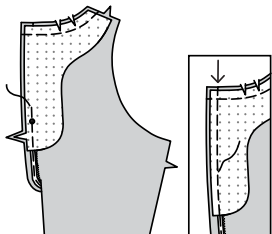
Using an adjustable zipper foot and starting at lower edge of facing,

stitch 1/2" (1.3cm) from back edges, stopping 1" (2.5cm) above large dot.

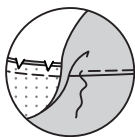
Change to your regular presser foot.

Starting at upper edge, stitch 5/8" (1.5cm) from back edges, gradually decreasing seam allowance to 1/2" (1.3cm) so that you can connect with previous stitching.

Trim corners. Do not trim center back edges.

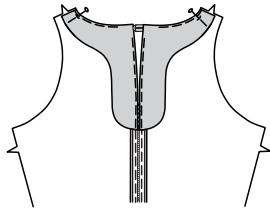


13. UNDERSTITCH facing as far as possible.

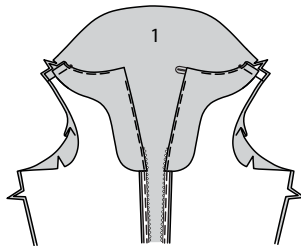


14. Turn facing and back edges to **INSIDE**, rolling zipper teeth back in place and turning out loop on left back; press.

Pin facing to back at shoulders.



15. Pin back to front at shoulders, right sides together, matching small dots; baste to small dot.

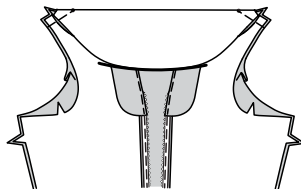


16. Turn front self-facing over wrong side of back along foldline.

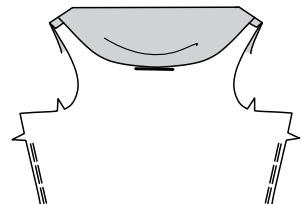
Pin shoulder edges together, matching small dots and having raw edges even.

Stitch shoulder seam to small dot through all thicknesses.

Trim seam.

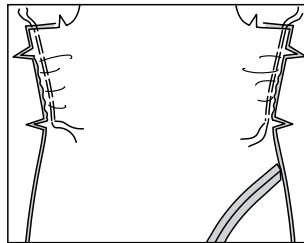


17. Turn self-facing to inside; press.

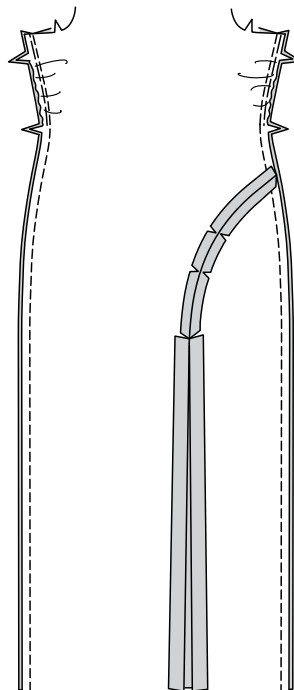


18. Pin front to back at side seams, matching notches.

Adjust gathering stitches to fit, distributing fullness evenly; baste.



19. Stitch front to back at side seams.



20. Stitch notched end of ARMHOLE FACING (6).

Fold facing in half lengthwise, with **WRONG** sides together, matching small dots; press. Pin.



21. On **OUTSIDE**, pin facing to armhole edge, placing small dot at shoulder seam and matching side seams.

Stitch in a 3/8" (1cm) seam. Stitch again close to first stitching within the seam allowance.

Trim seam close to second stitching.

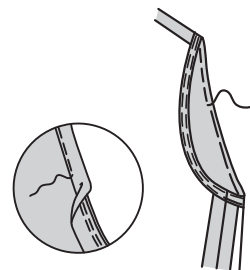


22. UNDERSTITCH facing.

Turn facing to **INSIDE**; press.

Baste close to inner edge of facing.

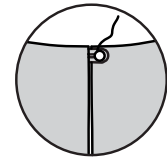
On **OUTSIDE**, top-stitch as basted.



FINISHING

23. Bring back neck edges together so that they meet.

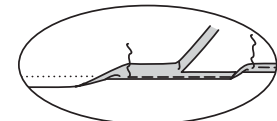
Sew button to right back under loop.



24. To make a baby hem, open out slit extensions and press under 1/4" (6mm) on lower edge of dress. Stitch close to pressed edge.

Trim close to stitching.

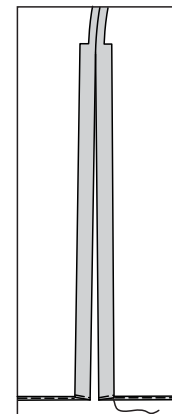
Press under another 1/8" (3mm) and stitch in place.



25. Turn slit facings back to inside; re-press if necessary.

Invisibly **SLIPSTITCH** lower edges of facings and dress together.

If you prefer, invisibly hand-tack upper edges of extension, being careful to just pick up a thread or two on dress.





Congrats!

You've completed your sewing adventure

SHARE YOUR LOOK



Post your pattern and tag us
[@simplicity_creative_group](#) and [#simplicitypatterns](#)
for a chance to be featured on our social media.

Look for more PDF patterns at [simplicity.com](#)

Have a question or need help with your sewing project call us at
1-800-782-0323

McCall's
by **design**_{group}

McCall's ©2024 a division of IG Design Group Americas Inc. • Atlanta, GA 30342 USA [www.thedesigngroup.com](#) • All Rights Reserved. [www.mccall.com](#) • Made in the U.S.A. Fabriqué aux États-Unis.

To be used for individual private home use only and not for commercial or manufacturing purposes. • A usage privé seulement et non à des fins commerciales ou de production en série. • Para uso privado solamente, no se puede utilizar con propósitos de comercialización o de producción en serie.