

McCall's

M8444



Designed and printed in USA

Easy

CHILDREN'S AND GIRLS' DRESSES

Suggested Fabrics: Cotton Blends, Gingham, Poplin, Seersucker. **Interfacing:** Lightweight Fusible.

Notions: A,B,C: One 3/8" (1cm) button.

Sizes	CHILDREN'S					GIRLS'				
	3	4	5	6	7	8	10	12	14	
BODY MEASUREMENTS: Select pattern size based on body measurements										
Chest	22	23	24	25	26	27	28½	30	32	Ins.
Waist	20½	21	21½	22	23	23½	24½	25½	26½	"
Hip	—	24	25	26	27	28	30	32	34	"
Back-neck to waist	9	9½	10	10½	11½	12	12¾	13½	14¼	"
Height	38	41	44	47	50	52	56	58½	61	"
Dress A	45** 1¾	1¾	1¾	1¾	2¾	2¾	2½	2¾	2¾	Yds.
	60** 1¾	1¾	1½	1½	1¾	1¾	1¾	2	2	"
Interfacing A	20"	½	½	¾	¾	¾	¾	¾	¾	"
Dress B	45** 1½	1½	1½	1¾	2½	2½	2¼	2¼	2¾	Yds.
	60** 1½	1½	1½	1¾	1¾	1¾	1¾	1¾	1¾	"
Interfacing B,C	20"	¾	¾	¾	½	½	½	½	½	Yds.
Dress C	45** 1¾	1¾	1¾	1¾	2¾	2¾	2½	2¾	2¾	Yds.
	60** 1¾	1¾	1¾	1¾	1¾	1¾	2	2	2¼	"
FINISHED GARMENT MEASUREMENTS (Includes Design and Wearing Ease)										
A,B,C Chest	25	26	27	28	30	31	32½	34	36	Ins.
A,B,C Waist	27	28	29	30	32	33	34½	36	38	"
Width, lower edge										
Dress A,B	53	54	55	56	70	71	73	75	77	Ins.
Dress C	58	59	60	61	77	78	80	82	84	"
Finished back length from base of neck										
Dress A,B,C	21½	23	24½	26	28	29½	31	32½	34¾	Ins.

*with nan **without nan

Facile

ROBES POUR ENFANTS ET FILLETTES

Tissus Conseillés: Cotonnades, Vichy, Popeline, Seersucker. **Entoilage:** thermocollant léger.

Mercerie: A,B,C: 1 bouton de 1cm.

Tailles	ENFANTS					FILLETTES				
	3	4	5	6	7	8	10	12	14	
MESURES DU CORPS: Choisissez la taille du patron basée sur les mesures du corps										
Poitrine	56	58.5	61	63.5	66	68.5	72.5	76	81.5	cm
Taille	52	53.5	54.5	56	58.5	59.5	62	65	67.5	"
Hanches	—	61	63.5	66	68.5	71	76	81.5	86.5	"
Dos du cou à la taille	23	24	25.5	26.5	29	30.5	32.5	34.5	36	"
Hauteur	96.5	104	112	120	127	132	143	149	155	"
Robe A	115cm* 1.6	1.6	1.6	1.7	2.1	2.2	2.3	2.4	2.5	m
	150cm* 1.3	1.3	1.4	1.4	1.6	1.6	1.7	1.8	1.8	"
Entoilage A	51cm	0.5	0.5	0.5	0.6	0.6	0.6	0.6	0.7	"
Robe B	115cm* 1.4	1.4	1.5	1.5	1.9	1.9	2.1	2.1	2.2	m
	150cm* 1.0	1.0	1.0	1.1	1.5	1.5	1.6	1.6	1.7	"
Interfacing B,C	51cm	0.3	0.3	0.3	0.3	0.3	0.3	0.5	0.5	m
Dress C	115cm* 1.5	1.5	1.6	1.6	2.2	2.2	2.3	2.4	2.4	m
	150cm* 1.1	1.3	1.3	1.4	1.6	1.7	1.7	1.8	2.1	"
MESURES DES VÊTEMENTS FINI (Motif et aisance de port compris)										
A,B,C Poitrine	0.3	0.3	0.3	0.3	0.3	0.3	0.3	0.5	0.5	cm
A,B,C Taille	69	71	74	76	81	84	88	91	97	"
Largeur à l'ourlet										
Dress A,B	69	71	74	76	81	84	88	91	97	cm
Dress C	147	150	152	155	196	198	203	208	213	"
Longueur finie – dos, votre nuque à l'ourlet										
Dress A,B,C	55	58	62	66	71	74	79	84	88	"

*avec cane **sans cane



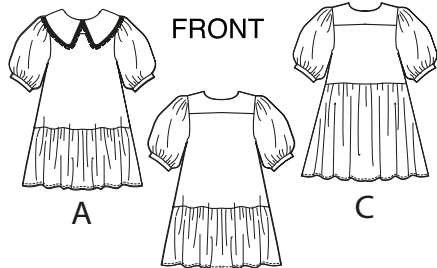
A



B



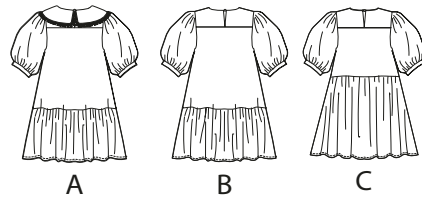
C



FRONT

B

BACK

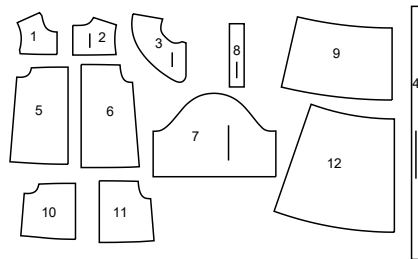


A

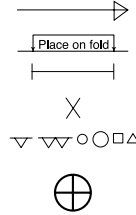
B

C

12 PATTERN PIECES



- 1 Yoke Front-A,B,C
- 2 Yoke Back-A,B,C
- 3 Collar-A
- 4 Collar Ruffle-A
- 5 Front-A,B
- 6 Back-A,B
- 7 Sleeve-A,B,C
- 8 Sleeve Band-A,B,C
- 9 Front and Back Ruffle-A,B
- 10 Bodice Front-C
- 11 Bodice Back-C
- 12 Skirt Front and Back-C



PATTERN MARKINGS

GRAINLINE: Place on straight grain of fabric, parallel to selvage or fold.
FOLDLINE: Place line on fold of fabric.
BUTTONHOLE MARKING: Indicates exact length and placement of buttonholes.
BUTTON MARKING: Indicates button placement.
NOTCHES AND SYMBOLS: For matching seams and construction details.
 Indicates the Bustline, Waistline, Hip and/or Biceps. Measurements refer to circumference of Finished Garment (Body Measurement + Wearing Ease + Design Ease). Adjust pattern if necessary. The measurement excludes pleats, tucks, darts and seam allowances.
SEAM ALLOWANCE: 5/8" (1.5cm) included unless otherwise indicated, but not printed on tissue.

ADJUST IF NECESSARY

Lengthen or Shorten at adjustment lines (==) or where indicated on pattern. If substantial length is added, you may need to purchase additional fabric.
TO SHORTEN: Crease along adjustment line. Make a fold half the amount needed. Tape in place.
TO LENGTHEN: Slash between adjustment lines. Spread amount as needed, keeping edges parallel. Tape over paper.
 When Alteration lines are not on tissue, lengthen or shorten at lower edge.

CUTTING AND MARKING

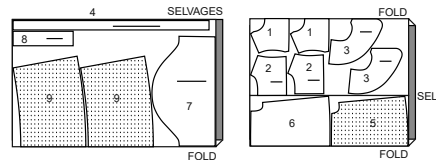
SHRINK FABRIC if not labeled pre-shrunk. Press.
CIRCLE LAYOUT for View, Size, Fabric Width.
 Use **WITH NAP** layout for fabrics with one-way designs, nap, pile or surface shading. Because most knits have surface shading, a with nap layout is used.
 For **DOUBLE THICKNESS (WITH FOLD)** - fold fabric with right sides together.
***DOUBLE THICKNESS (WITHOUT FOLD)** - For fabrics with nap, fold fabric crosswise, right sides together. Mark as shown. Cut along crosswise fold of fabric (A). Turn upper layer 180° so arrows go in same direction and place over lower layer, right sides together (B).
 For **SINGLE THICKNESS** - place fabric right side up. (For Fur Pile fabrics, place pile side down.)
 ★ Cut other pieces first, allowing enough fabric to cut this piece. Open fabric. For "Cut 1" pieces, cut piece once on single layer of fabric with piece face up on right side of fabric.
 Pattern may have cutting lines for several sizes. Select the proper cutting line or pattern pieces for your size.
 Before **CUTTING** place all pieces on fabric according to layout. Pin. (Layouts show approximate position of pattern pieces; position may vary according to your pattern size.) Cut **ACCURATELY**, cutting notches outward.
 Before removing pattern, **TRANSFER MARKINGS** and lines of construction to Wrong Side of fabric, using the Pin and Chalk Pencil method or Tracing Paper and Dressmaker Wheel. Markings needed on right side of fabric should be thread traced.
NOTE: Broken-line boxes (a1 b1 c1) in layouts represent pieces cut by measurements provided.

CUTTING LAYOUTS

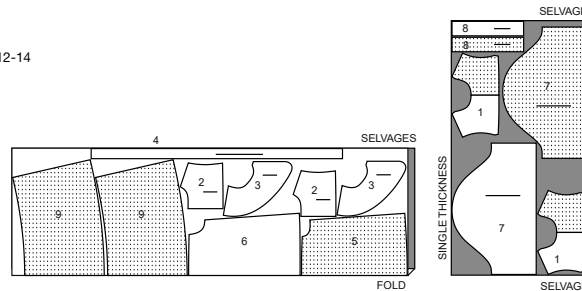
DRESS A

use pieces: 1 2 3 4 5 6 7 8 9

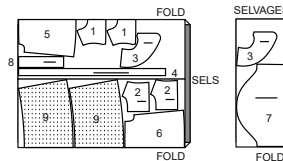
45" (115 cm)
with nap
sizes 3-4-5-6



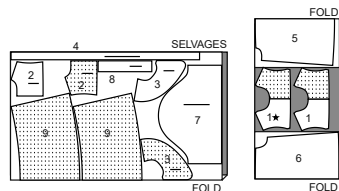
45" (115 cm)
with nap
sizes 7-8-10-12-14



60" (150 cm)
with nap
sizes 3-4-5-6



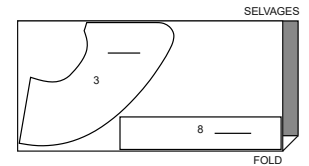
60" (150 cm)
with nap
sizes 7-8-10-12-14



INTERFACING A

use pieces: 3 8

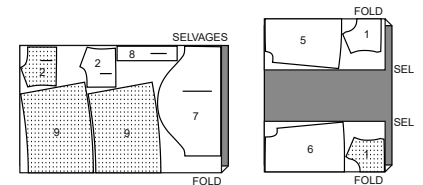
20" (51 cm)
all sizes



DRESS B

use pieces: 1 2 5 6 7 8 9

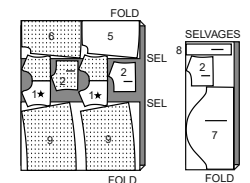
45" (115 cm)
with nap
sizes 3-4-5-6



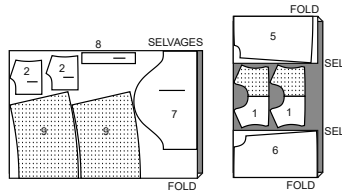
45" (115 cm)
with nap
sizes 7-8-10-12-14



60" (150 cm)
with nap
sizes 3-4-5-6



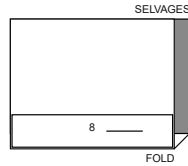
60" (150 cm)
with nap
sizes 7-8-10-12-14



INTERFACING B,C

use piece: 8

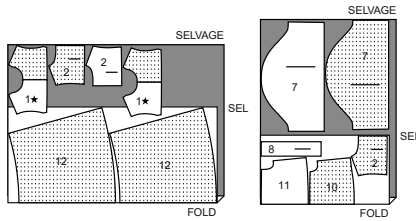
20" (51 cm)
all sizes



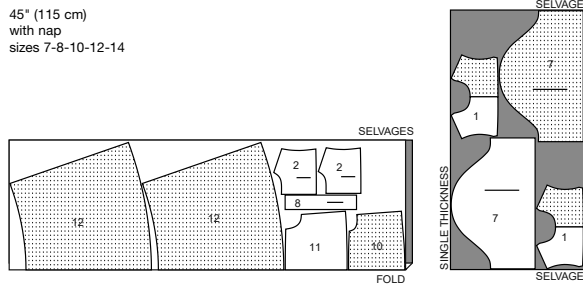
DRESS C

use pieces: 1 2 7 8 10 11 12

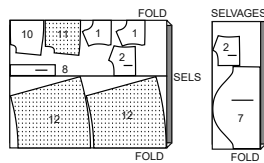
45" (115 cm)
with nap
sizes 3-4-5-6



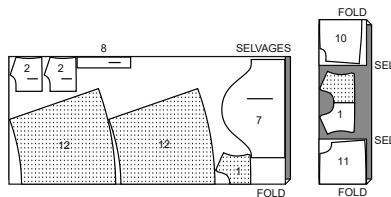
45" (115 cm)
with nap
sizes 7-8-10-12-14



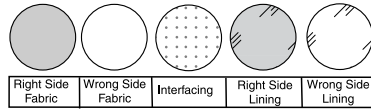
60" (150 cm)
with nap
sizes 3-4-5-6



60" (150 cm)
with nap
sizes 7-8-10-12-14

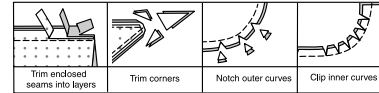


SEWING INFORMATION FABRIC KEY



SEAM ALLOWANCES

Use 5/8" (1.5cm) seam allowances unless otherwise indicated.



PIN AND FIT

Pin or baste seams, **RIGHT SIDE TOGETHER**, matching notches. Fit garment before stitching major seams.

PRESS

Press seam allowances flat; then open unless otherwise stated. Clip where necessary so they lie flat.

GLOSSARY

Sewing methods in **BOLD TYPE** have Sewing Tutorial Video available. Scan QR CODE to watch videos:

GATHER - see [sewing two row gathers video](#)

NARROW HEM - see [sewing narrow hems video](#)

SLIPSTITCH - see [how to do slip-stitching video](#)

STAYSTITCH - see [how to do stay-stitching video](#)

UNDERSTITCH - see [how to understitch video](#)

SEWING TUTORIALS



Build your skills viewing short, easy-to-follow videos at simplicity.com/sewingtutorials

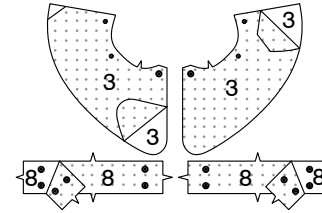
SEWING DIRECTIONS

DRESS A, B, C

NOTE: Under each sub-heading, the first View will be illustrated, unless otherwise indicated.

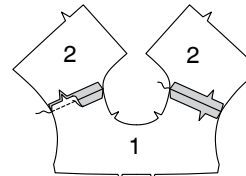
INTERFACING

1. Pin **INTERFACING** to wrong side of each matching **FABRIC** section. Trim corners of interfacing, as shown. Fuse, following manufacturer's instructions.



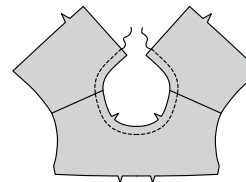
FRONT AND BACK

2. With **Right sides** together, stitch **YOKE FRONT** (1) to **YOKE BACK** (2) at shoulder seams.

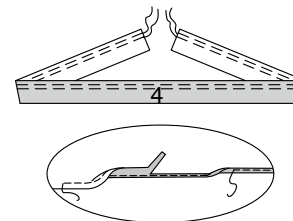


COLLAR A

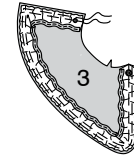
3. **STAYSTITCH** neck edge of garment.



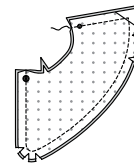
4. **GATHER** upper edge of **COLLAR RUFFLE** (4). To hem lower edge of ruffle, stitch 1/2" (1.3cm) from raw edge. Turn in and press edge alongside stitching, as shown. Trim very close to stitching. Turn in again along trimmed edge. Stitch in place.



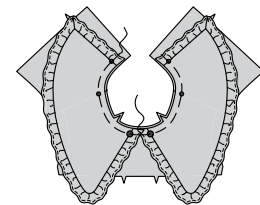
5. On outside, pin ruffle to collar matching small and large dots. Adjust gathers. Baste.



6. Pin collar to facing matching small and large dots. Stitch along outer edge, leaving edge with dots open. Trim seam. Clip curves.

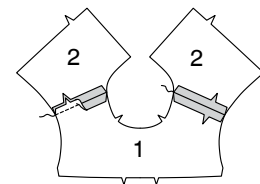


7. On outside, pin collar to neck edge matching notches and dots, clipping to stay-stitching if necessary. Baste. **Note:** Pin collar out of the way, when stitching remaining seams.

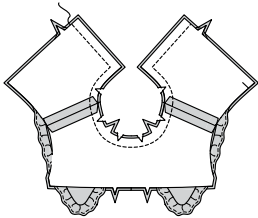


CONTINUE AS FOLLOWS FOR ALL VIEWS

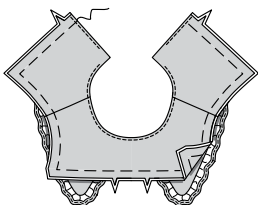
8. For facing, stitch yoke front and back sections together at shoulder seams matching notches.



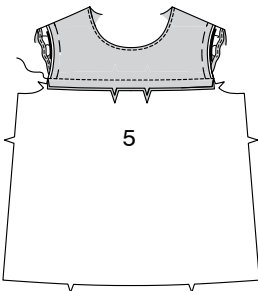
9. With right sides together, pin facing to yoke matching centers having raw edges even. Stitch neck and back edges, keeping loose ends of collar free for **View A**. Trim seam, clip curves.



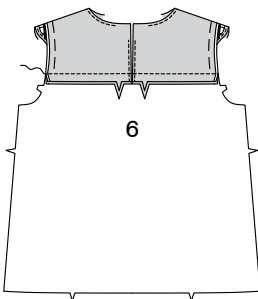
10. **UNDERSTITCH** facing as far as possible. Turn lining to inside. Press. Baste raw edges together, keeping collar free.



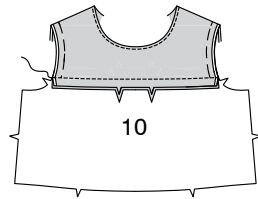
11. **View A, B**- With right sides together, stitch yoke front to **FRONT** (5) matching notches. Press seam down.



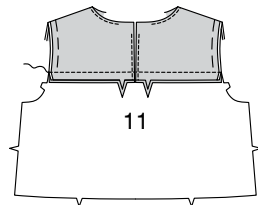
12. Stitch yoke back sections to **BACK** (6) matching notches, having finished edges meet at center back. Press seam down.



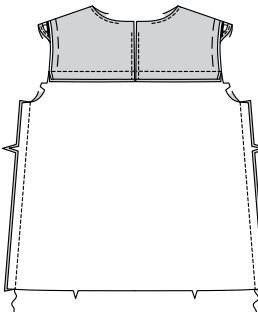
13. **View C**- With right sides together, stitch yoke front to **BODICE FRONT** (10) matching notches. Press seam down.



14. Stitch yoke back sections to **BODICE BACK** (11) matching notches. Press seam down.

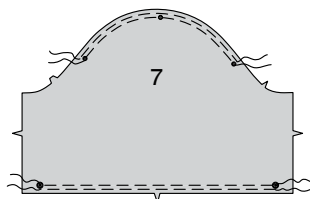


15. **All Views**- With right sides together, stitch front to back at side seams.

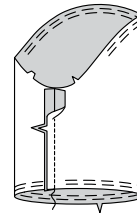


SLEEVES

16. **GATHER** upper edge of **SLEEVE** (7) between small dots. **GATHER** lower edge of sleeve between small dots.



17. Stitch sleeve seam.



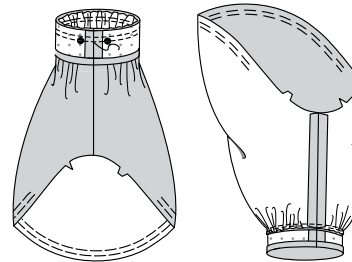
18. Stitch ends of **SLEEVE BAND** (8) together.



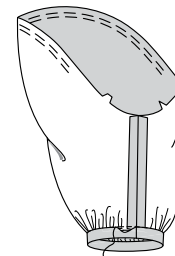
19. Turn in seam allowance on one long edge of band; press. Trim pressed seam allowance to 3/8" (10mm).



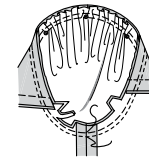
20. Pin band to lower edge of sleeve, matching symbols and seams. Adjust gathers; baste. Stitch. Trim. Press seam toward band.



21. Turn cuff to inside along foldline; press. **SLIPSTITCH** pressed edge over seam.

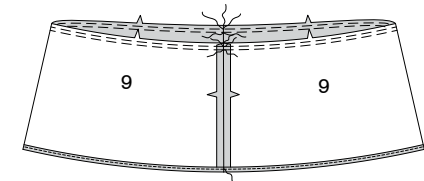


22. With right sides together, pin sleeve into armhole, placing center small dot at shoulder seam, matching remaining small dots. Adjust gathers; baste. Stitch. Stitch again 1/4" (6mm) away in seam allowance. Trim close to stitching. Press seam allowances flat. Turn seam toward sleeve.

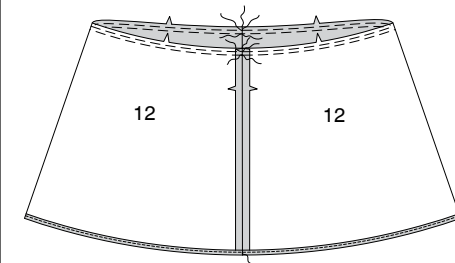


FINISHING

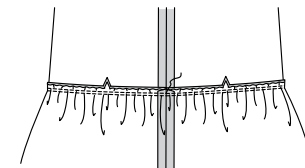
23. **View A, B**- Stitch side seams of **FRONT AND BACK RUFFLE** (9). **GATHER** upper edge of ruffle breaking stitching at seam allowances. **NARROW HEM** lower edge. See **narrow hem video** for assistance.



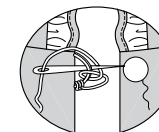
24. **View C**- Stitch side seams of **SKIRT FRONT AND BACK** (12). **GATHER** upper edge of skirt breaking stitching at seam allowances. **NARROW HEM** lower edge.



25. **All Views**- with right sides together, pin ruffle/skirt to lower edge of dress, matching side seams and notches. Adjust gathers. Baste. Stitch. Press seam up.



26. Sew button right back opening edge, as shown. Make thread loop at left opening edge opposite button, large enough for button to pass through.





Congrats!

You've completed your sewing adventure

**SHARE
YOUR** LOOK



Post your pattern and tag us
[@simplicity_creative_group](#) and [#simplicitypatterns](#)
for a chance to be featured on our social media.

Look for more PDF patterns at [simplicity.com](https://www.simplicity.com)

Have a question or need help with your sewing project call us at
1-800-782-0323

McCall's
by **design**_{group}