

McCall's

M8441



Designed and printed in USA

Scan QR code for a Sew-Along video tutorial. Scannez le code QR pour un didacticiel vidéo de couture.



Average

MEN'S JACKET AND PANTS

Suggested Fabrics: Stretch Knits only (35% Stretch) such as: Athletic Knits, French Terry, Interlock. See Stretch Gauge. **Interfacing:** Fusible Knit.

Notions: **A, B:** 5½ yds. (5.0m) of ¼" (6mm) stretch piping, three strips of 6" x 40" (15cm x 102cm) rib trim. **Also for A:** 28" (71cm) separating zipper (adjust to fit). **Also for B:** 26" (66cm) separating zipper (adjust to fit). **C, D:** 4¾ yds. (4.4m) of ¼" (6mm) stretch piping, 1½ yds. (1.4m) of 1¼" (3cm) elastic. **Also for C:** Three strips of 6" x 40" (15cm x 102cm) rib knit trim. **Also for D:** One strip of 6" x 40" (15cm x 102cm) rib knit trim.

Sizes	34	36	38	40	42	44	46	48	50	52
BODY MEASUREMENTS: Select pattern size based on body measurements										
Chest	34	36	38	40	42	44	46	48	50	52
Waist	28	30	32	34	36	39	42	44	46	48
Hip	35	37	39	41	43	45	47	49	51	53

Jacket A	60**	1%	1%	1%	1%	1%	2	2	2½	2½	2½	Yds.
Interfacing A, B - 20", ½yd.												
Jacket B	60**	1%	2½	2½	2½	2½	2½	2½	2½	2½	Yds.	
Contrast B (Sleeve Inset) - 60", 1yd.												
Pants C	60**	1%	1%	1%	1%	1%	1%	2½	2½	2½	Yds.	
Pants D	60**	1%	1%	1½	1%	1%	1%	2	2½	2½	Yds.	
Contrast D (Side Panel)												
	60**	1%	1%	1%	1%	1%	1%	1%	1%	1%	Yds.	

FINISHED GARMENT MEASUREMENTS (Includes Design and Wearing Ease)											
A, B Chest	35½	37½	39½	41½	43½	45½	47½	49½	51½	53½	Ins.
A, B Waist	35	37	39	41	43	45	47	49	51	53	"
C, D Hip	37	39	41	43	45	47	49	51	53	55	"
Width, each leg											
Pants C (leg band)	10½	11	11½	11	12½	13	13½	14	14½	15	Ins.
Pants D	13½	14	14½	15	15½	16	16½	17	17½	18	"
Finished back length from base of neck											
Jacket A, B (incl. band)	28½	28½	28½	29	29¼	29½	29¾	30	30¼	30½	Ins.
Finished side length from waist											
Pants C (incl. band), Pants D	41¼	41½	41¾	42	42¼	42½	42¾	43	43¼	43½	Ins.

*with nap **without nap

Moins Facile

VESTE ET PANTALON POUR HOMMES

Tissus Conseillés: Tricot extensibles seulement (35% d'élasticité) tels que: Mailles de sport, Tissu bouclette, Interlock. Reportez-vous au taux d'élasticité. **Entoilage:** Tricot thermocollant.

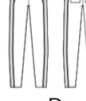
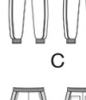
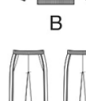
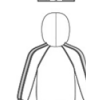
Merceria: **A, B:** 5.0m de gansé extensible de 6 mm, 3 bande (s) de galon à côtes de 15cm x 102cm. **Aussi pour A:** fermeture à glissière séparable de 71cm (à ajuster). **Aussi pour B:** fermeture à glissière séparable de 66cm (à ajuster). **C, D:** 4.4m de gansé extensible de 6mm, 1.4m d'élastique de 3cm. **Aussi pour C:** 3 bandes de galon de tricot à côtes de 15cm x 102cm. **Aussi pour D:** 1 bande de galon de tricot à côtes de 15cm x 102cm.

Tailles	34	36	38	40	42	44	46	48	50	52
MESURES DU CORPS: Choisissez la taille du patron basée sur les mesures du corps										
Poitrine	87	92	97	102	107	112	117	122	127	132
Taille	71	76	82	87	92	99	107	112	117	122
Hanches (23cm au-dessous de la taille)	89	94	99	104	109	115	119	124	128	135

Veste A	150cm*	1.5	1.5	1.6	1.6	1.6	1.7	1.8	1.9	2.1	2.1	m
Entoilage A, B - 51cm, 0.8m												
Veste B	150cm*	1.6	1.8	1.9	1.9	1.9	2.1	2.2	2.2	2.3	m	
Contraste B (Incrustation de manche) - 150cm* - 0.9m												
Pantalon C	150cm*	1.5	1.5	1.5	1.5	1.6	1.7	1.9	2.2	2.2	2.2	m
Pantalon D	150cm*	1.3	1.3	1.4	1.5	1.5	1.6	1.6	1.8	1.9	2.1	m
Contraste D (Panneau du côté)												
	150cm*	1.0	1.1	1.1	1.1	1.1	1.1	1.1	1.1	1.1	1.1	m

MÉSURE DES VÊTEMENTS FINI (Motif et aisance de port compris)											
A, B Poitrine	90	95	100	105	110	116	121	126	131	136	cm
A, B Taille	89	94	99	104	109	114	119	124	130	135	"
C, D Hanches	94	99	104	109	114	119	124	130	135	140	"
Largeur, chaque jambe											
Pantalon C (bande de la jambe)	27	28	29	30	32	33	34	36	37	38	cm
Pantalon D	34	36	37	38	39	41	42	43	44	46	"
Longueur finie – dos, votre nuque à l'ourlet											
Veste A, B (y compris de bande)	72	72	73	74	74	75	76	76	77	77	cm
Longueur finie – côté, taille à l'ourlet											
Pantalon C (y compris de bande), Pantalon D	105	105	106	107	107	108	109	109	110	110	cm

*avec sens **sans sens



Use the 1 inch (2.54cm) box to ensure you are using rule at 100%

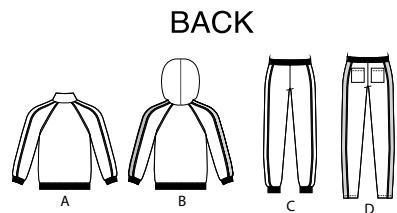
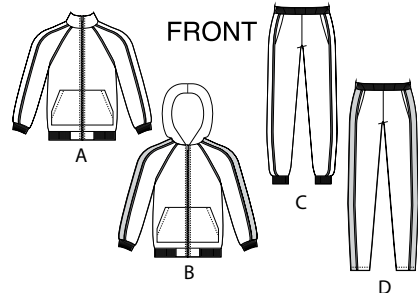
Utilisez la boîte de 2.54 cm pour vous assurer d'utiliser la règle à 100%.

Utilizar un cuadrado de 2.54 cm para asegurarse de estar usando la regla al 100%.

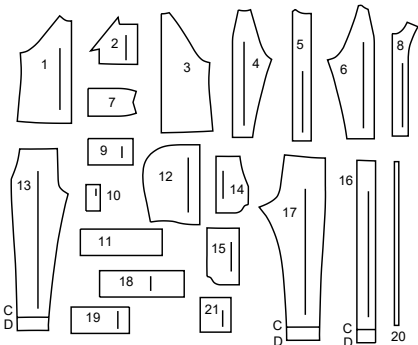
4" of crosswise folded knit must STRETCH from here
10 cm de tricot pilé sur le travers doivent s'étire d'ici
10 cm de tejido de punto doblado al través deben estirarse desde acá

To Here (35%)
jusqu'ici (35%)
hasta acá (35%)

When using the Pick-A-Knit® rule to measure your fabrics stretch capacity, rule must be viewed or printed at 100%.
Quand vous utilisez la règle Pick-A-Knit® pour mesurer la capacité d'élasticité des tissus, la règle doit être visible ou imprimée à 100%.
Al utilizar la regla Pick-A-Knit® para medir la capacidad de elasticidad de las telas, la regla debe estar visible o impresa al 100%.

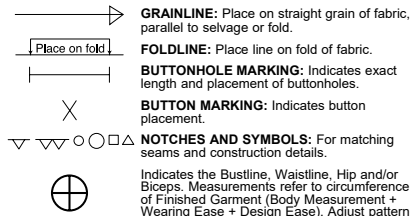


21 PATTERN PIECES



- 1 FRONT - A,B
- 2 POCKET - A,B
- 3 BACK - A,B
- 4 SLEEVE FRONT - A,B
- 5 SLEEVE INSET - A,B
- 6 SLEEVE BACK - A,B
- 7 COLLAR - A
- 8 FRONT FACING - A,B
- 9 SLEEVE BAND - A,B
- 10 LOWER FRONT BAND - A,B
- 11 LOWER FRONT AND BACK BAND - A,B
- 12 HOOD - B
- 13 FRONT - C,D
- 14 POCKET FACING - C,D
- 15 SIDE FRONT AND POCKET - C,D
- 16 SIDE PANEL - C,D
- 17 BACK - C,D
- 18 CASING - C,D
- 19 LEG BAND - C,D
- 20 GUIDE FOR ELASTIC - C,D
- 21 BACK POCKET - D

PATTERN MARKINGS



GRAINLINE: Place on straight grain of fabric, parallel to selvage or fold.
FOLDLINE: Place line on fold of fabric.
BUTTONHOLE MARKING: Indicates exact length and placement of buttonholes.
BUTTON MARKING: Indicates button placement.
NOTCHES AND SYMBOLS: For matching seams and construction details.
 Indicates the Bustline, Waistline, Hip and/or Biceps. Measurements refer to circumference of Finished Garment (Body Measurement + Wearing Ease + Design Ease). Adjust pattern if necessary. The measurement excludes pleats, tucks, darts and seam allowances.
SEAM ALLOWANCE: 5/8" (1.5cm) included unless otherwise indicated, but not printed on tissue.

ADJUST IF NECESSARY

Lengthen or Shorten at adjustment lines (==) or where indicated on pattern. If substantial length is added, you may need to purchase additional fabric.
TO SHORTEN: Crease along adjustment line. Make a fold half the amount needed. Tape in place.
TO LENGTHEN: Slash between adjustment lines. Spread amount as needed, keeping edges parallel. Tape over paper.
 When Alteration lines are not on tissue, lengthen or shorten at lower edge.

CUTTING AND MARKING

SHRINK FABRIC if not labeled pre-shrunk. Press.
CIRCLE LAYOUT for View, Size, Fabric Width.
 Use **WITH NAP** layout for fabrics with one-way designs, nap, pile or surface shading. Because most knits have surface shading, a with nap layout is used.
 For **DOUBLE THICKNESS (WITH FOLD)** - fold fabric with right sides together.
*** DOUBLE THICKNESS (WITHOUT FOLD)** - For fabrics with nap, fold fabric crosswise, right sides together. Mark as shown. Cut along crosswise fold of fabric (A). Turn upper layer 180° so arrows go in same direction and place over lower layer, right sides together (B).
 For **SINGLE THICKNESS** - place fabric right side up. (For Fur Pile fabrics, place pile side down.)

★ Cut other pieces first, allowing enough fabric to cut this piece. Open fabric. For "Cut 1" pieces, cut piece once on single layer of fabric with piece face up on right side of fabric.
 Pattern may have cutting lines for several sizes. Select the proper cutting line or pattern pieces for your size.
 Before **CUTTING** place all pieces on fabric according to layout. Pin. (Layouts show approximate position of pattern pieces; position may vary according to your pattern size.) Cut **ACCURATELY**, cutting notches outward.
 Before removing pattern, **TRANSFER MARKINGS** and lines of construction to Wrong Side of fabric, using the Pin and Chalk Pencil method or Tracing Paper and Dressmaker Wheel. Markings needed on right side of fabric should be thread traced.
NOTE: Broken-line boxes (a! b! c!) in layouts represent pieces cut by measurements provided.

CUTTING LAYOUTS

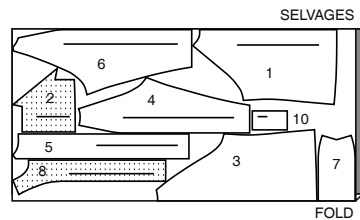
RIGHT SIDE OF PATTERN	WRONG SIDE OF PATTERN	RIGHT SIDE OF FABRIC	WRONG SIDE OF FABRIC
-----------------------	-----------------------	----------------------	----------------------

A,B,C,D Pieces cut of Rib Knit trim: See Sewing Directions

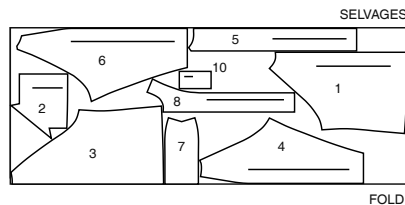
JACKET A

use pieces: 1 2 3 4 5 6 7 8 10

60" (150 cm) with nap sizes 34 36 38 40 42



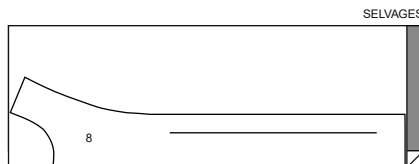
60" (150 cm) with nap sizes 44 46 48 50 52



INTERFACING A,B

use piece: 8

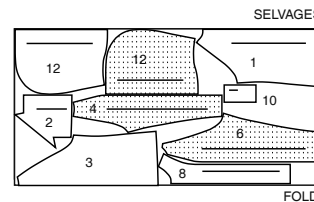
20" (51 cm) all sizes



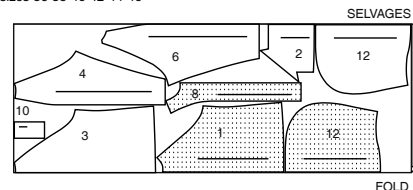
JACKET B

use pieces: 1 2 3 4 6 8 10 12

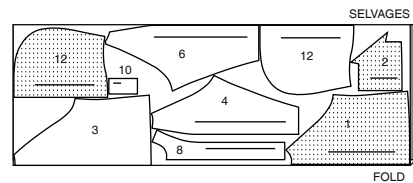
60" (150 cm) with nap size 34



60" (150 cm) with nap sizes 36 38 40 42 44 46



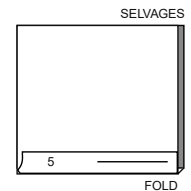
60" (150 cm) with nap sizes 48 50 52



CONTRAST B (Sleeve Inset)

use piece: 5

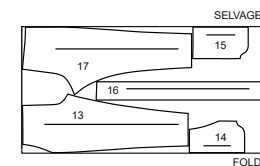
60" (150 cm) with nap all sizes



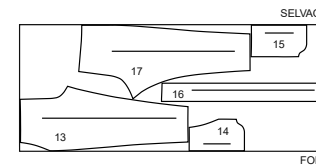
PANTS C

use pieces: 13 14 15 16 17

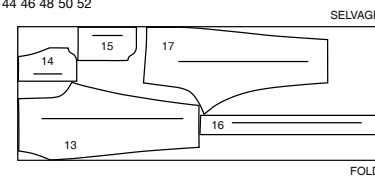
60" (150 cm) with nap sizes 34 36 38 40 42



60" (150 cm) with nap sizes 44 46



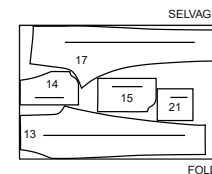
60" (150 cm) with nap sizes 44 46 48 50 52



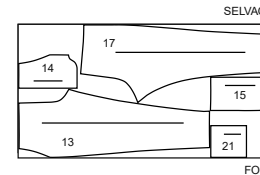
PANTS D

use pieces: 13 14 15 17 21

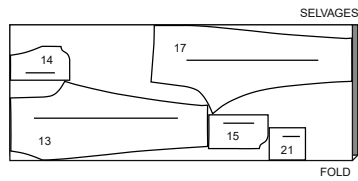
60" (150 cm) with nap sizes 34 36



60" (150 cm) with nap sizes 38 40 42 44 46



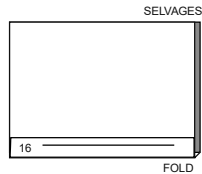
60" (150 cm)
with nap
sizes 48 50 52



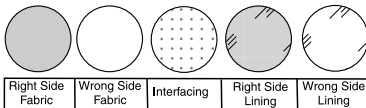
CONTRAST D (Side Panel)

use piece: 16

60" (150 cm)
with nap
all sizes

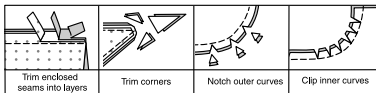


SEWING INFORMATION
FABRIC KEY



SEAM ALLOWANCES

Use 5/8" (1.5cm) seam allowances unless otherwise indicated.



PIN AND FIT

Pin or baste seams, **RIGHT SIDE TOGETHER**, matching notches. Fit garment before stitching major seams.

PRESS

Press seam allowances flat; then open unless otherwise stated. Clip where necessary so they lie flat.

GLOSSARY

Sewing terms appearing in **BOLD TYPE** in Sewing Instructions are explained below.

DOUBLE - STITCH - Stitch seam along seamline; stitch again 1/4" (6mm) away in seam allowance using a straight stitch OR zigzag stitch; trim close to second stitching OR overlock seam.

EDGESTITCH - Stitch close to finished edge or seam.

FINISH - Stitch 1/4" (6mm) from raw edge and finish with one of the following: (1) Pink OR (2) Overcast OR (3) Turn in along stitching and stitch close to fold OR (4) Overlock.

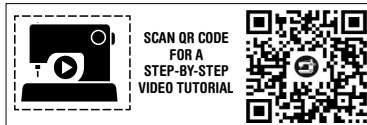
OPTIONAL FOR HEMS: Apply Seam Binding.

SLIPSTITCH - Slide needle through a folded edge, then pick up a thread of underneath fabric.

STAYSTITCH - Stitch 1/8" (3mm) from seamline in seam allowance (usually 1/2" (1.3cm) from raw edge).

TOPSTITCH - On outside, stitch 1/4" (6mm) from edge, seam or previous stitching, using presser foot as guide, or stitch where indicated in instructions.

UNDERSTITCH - Open out facing or underside of garment; stitch to seam allowance close to seam.



SEWING DIRECTIONS

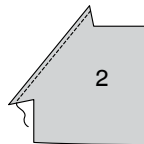
JACKET A, B

NOTE: Stretch fabric evenly in front and back of needle while stitching.

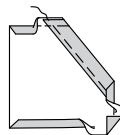
NOTE: Under each sub-heading, the first View will be illustrated, unless otherwise indicated.

FRONT, BACK AND SLEEVE

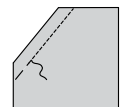
1. **FINISH** upper slanted edge of **POCKET** (2).



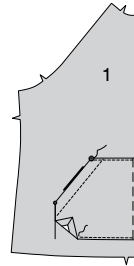
2. Turn upper edge of pocket to inside along foldline. Press. Baste close to finished edge. Baste upper and side edges. Turn in upper, side and lower seam allowances, diagonally folding corners. Press.



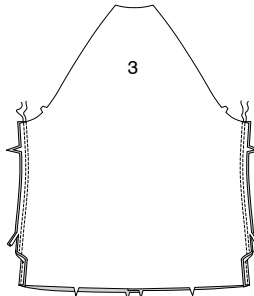
3. **TOPSTITCH** along inner basting.



4. Pin pocket to **FRONT** (1), matching symbols, placing pressed edges along placement lines. **EDGESTITCH** upper, side and lower edges, reinforcing upper ends.

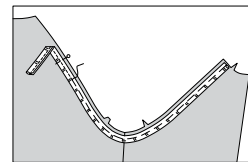


5. Stitch fronts to **BACK** (3) at sides in **DOUBLE-STITCHED** seams. Press seams toward back.

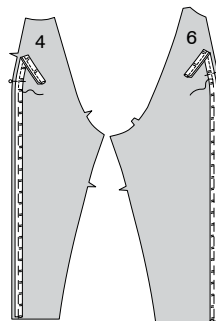


NOTE: When stitching seams with piping trim, use a zipper foot.

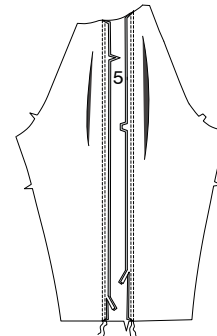
6. On outside, pin piping trim to armhole edges of jacket, placing ridge of trim slightly over seamlines, as shown. Baste.



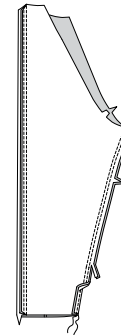
7. On outside, pin piping trim to outer edge of **SLEEVE FRONT** (4) and **SLEEVE BACK** (6), placing ridge of trim slightly over seamlines, as shown. Baste.



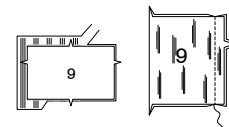
8. Pin **SLEEVE INSET** (5) to sleeve front and sleeve back, matching notches. Stitch in **DOUBLE-STITCHED** seams, being careful not to cut piping. Press seams toward sleeve inset.



9. Stitch sleeve seam in a **DOUBLE-STITCHED** seam. Press seam toward back.



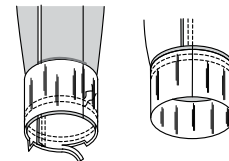
10. Open out rib knit section if necessary. Pin **SLEEVE BAND** (9) to rib knit strip, matching fold on strip to foldlines. Transfer markings. Cut out two sections. Stitch ends of **SLEEVE BAND** (9) together.



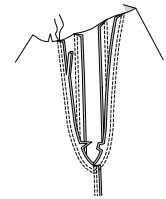
11. With wrong sides together, fold sleeve band along foldline; press lightly. Pin raw edges together.



12. Pin sleeve band to sleeve, matching seams, as shown. Stitch, stretching sleeve band to fit. Stitch again 1/4" (6mm) away in seam allowance. Trim close to stitching. Press seam up.

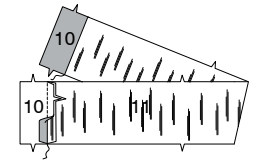
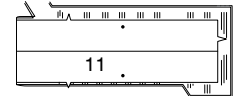


13. With right sides together, pin sleeve to armhole edge. Baste. Stitch. Stitch again 1/4" (6mm) away in seam allowance. Trim close to stitching, being careful not to cut piping. Press seam allowances flat. Turn seam toward sleeve.

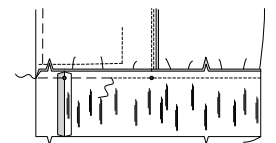


LOWER BAND, COLLAR AND HOOD

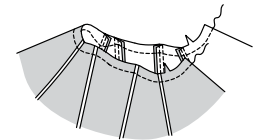
14. Open out rib knit section if necessary. Fold strip in half lengthwise. Pin **LOWER FRONT AND BACK BAND** (11) to rib knit strip placing center back fold on pattern piece on folded edge of trim, matching the horizontal strip to foldline on pattern piece. Transfer marking. Cut out section. Stitch **LOWER FRONT BAND** (10) sections to front edges of **LOWER FRONT AND BACK BAND** (11).



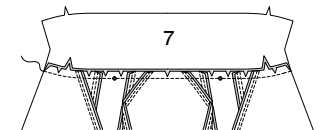
15. Pin lower band to jacket, matching centers and notches. Baste, stretching band to fit. Stitch lower band to seam. Press seam up.



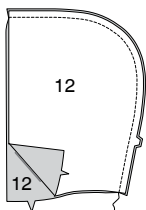
16. **STAYSTITCH** neck edge.



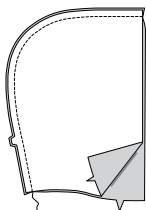
View A:
17. Pin **COLLAR** (7) to neck edge, matching centers, notches and small dots, clipping neck edge of jacket where necessary. Baste. Stitch. Press seam toward collar.



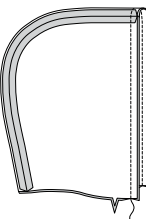
View B:
18. Stitch two HOOD (12) sections together at center back.



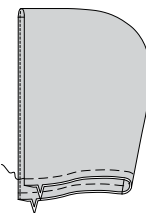
19. For facing, stitch remaining two hood sections together at center back.



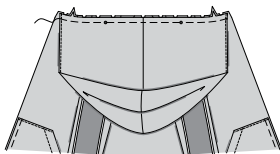
20. With right sides together, pin hood facing to hood, matching seams. Stitch front edge. Trim. UNDERSTITCH facing.



21. Turn facing to inside; press. Baste raw edges.

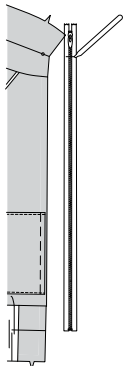


22. Pin hood to neck edge, matching centers, notches and small dots, clipping neck edge of jacket where necessary. Baste.

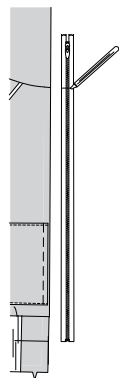


ZIPPER AND FINISHING

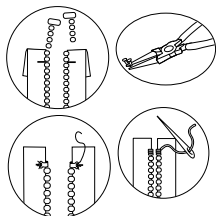
View A:
23. NOTE: It may be necessary to shorten zipper. To make new zipper stop, place closed zipper along opening edge and zipper stop even with lower foldline. Mark placement of new zipper stop 1/8" (3mm) below upper foldline.



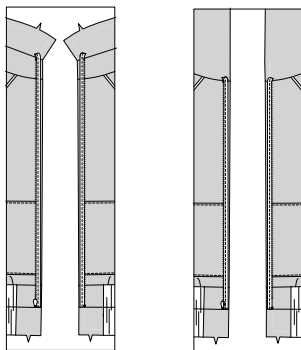
View B:
NOTE: It may be necessary to shorten zipper. To make new zipper stop, place closed zipper along opening edge and zipper stop even with foldline. Mark placement of new zipper stop 1/8" (3mm) below upper seamline.



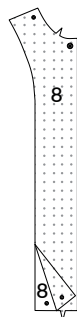
Views A, B:
24. Remove teeth above marking for new zipper stop. Bend a straight metal eye with pliers and sew securely to each tape at new marking. OR make several whipstitches over tape at marking.



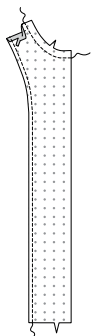
25. Open and separate zipper. On outside, pin zipper, face down, along front opening edges, placing zipper stop even with foldline and zipper teeth over seamline. Baste.



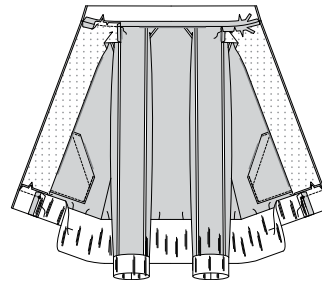
26. Pin INTERFACING to wrong side of FRONT FACING (8). Fuse, following manufacturer's instructions.



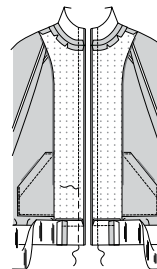
27. FINISH inner edge of facing. STAYSTITCH neck edge. Turn in seam allowance on shoulder edge of facing. Press. Trim pressed seam allowance to 3/8" (1cm).



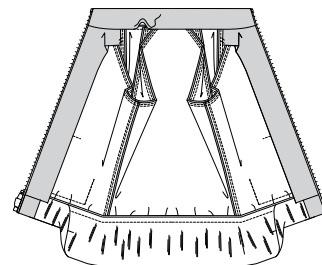
View A:
28. Turn collar and lower band to outside along foldlines. Pin facings to collar matching notches and small dots, clipping facing where necessary. Baste. Stitch. Press seam open, pressing in remainder of seam allowance on collar. Trim pressed seam allowance to 3/8" (1cm). Pin facing to lower front band. Stitch from front edge to small dot. Press seam up.



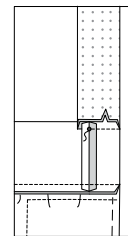
29. With right sides together, pin collar, front facing and lower front band to front opening edge, over zipper. Baste. Stitch along seamline, using a zipper foot.



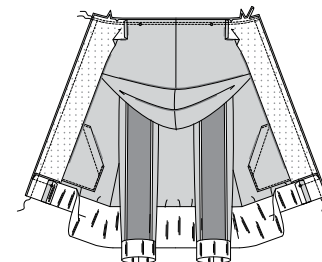
30. Turn facings to inside and zipper teeth out, turning in collar and lower band along foldlines. Press. SLIPSTITCH pressed edge of collar over seam. Tack facings to armhole seam allowances.



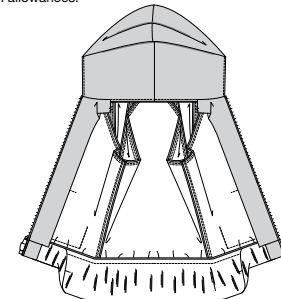
View B:
31. Pin facing to lower front band. Stitch from front edge to small dot. Press seam up.



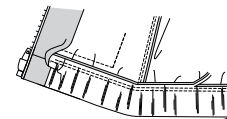
32. With right sides together, pin front facing and lower front band to front opening and neck edges, over zipper, clipping neck edge of facing where necessary. Baste. Stitch front opening edge along seamline, using a zipper foot. Stitch neck edge. Stitch neck edge again 1/4" (6mm) away in seam allowance. Trim close to stitching.



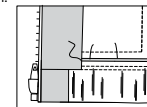
33. Turn facings to inside and zipper teeth out, turning in lower band along foldline. Press. Tack facings to shoulder seam allowances.



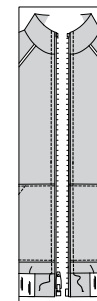
Views A, B:
34. Open out facings at lower edge. With wrong sides together, pin lower band edges together, matching centers and notches. Stitch, stretching band to fit, connecting with previous stitching. Stitch again 1/4" (6mm) away in seam allowance. Trim close to stitching.



35. Turn in facings, turning in remainder of seam allowance on lower edges. Press. SLIPSTITCH pressed edges over seam, as shown.



36. TOPSTITCH front opening edges, as shown.



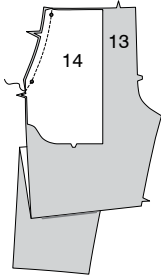
PANTS C, D

NOTE: Stretch fabric evenly in front and back of needle while stitching.

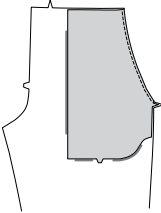
NOTE: Under each sub-heading, the first View will be illustrated, unless otherwise indicated

FRONT AND BACK

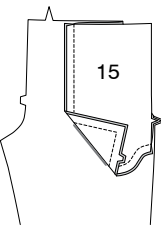
1. With right sides together, pin POCKET FACING (14) to upper side edge of FRONT (13), matching notches and small dots. Stitch. Trim. **UNDERSTITCH** pocket facing.



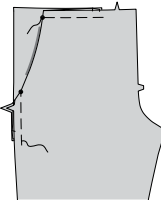
2. Turn pocket to inside. Press.



3. Open out pocket facing. With right sides together, pin SIDE FRONT AND POCKET (15) to pocket facing, matching notches. Stitch lower and side edges together.

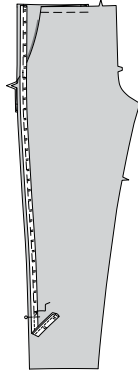


4. Turn in pocket facing and pocket. Baste upper and side edges.



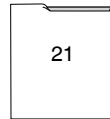
NOTE: When stitching seams with piping trim, use a zipper foot.

5. On outside, pin piping trim to side edge of front, placing ridge of trim slightly over seamlines, as shown. Baste.

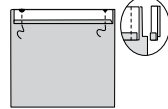


View D:

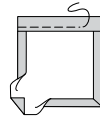
6. Turn in 1/4" (6mm) on upper edge of each BACK POCKET (21). Press.



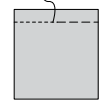
7. Turn upper edge to outside along foldline. Stitch ends. Trim.



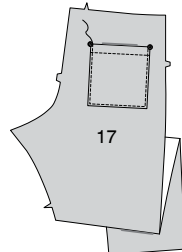
8. Turn upper edge of pocket to inside, turning in remaining seam allowances, diagonally folding corners. Press. Baste close to inner pressed edge.



9. **TOPSTITCH** along basting.



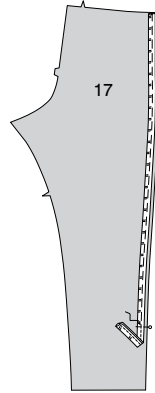
10. Pin pocket to BACK (17), matching symbols. **EDGESTITCH** side and lower edges, reinforcing upper ends.



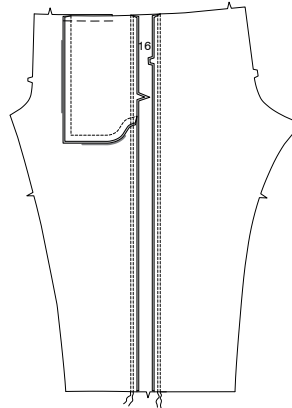
Views C, D:

NOTE: When stitching seams with piping trim, use a zipper foot.

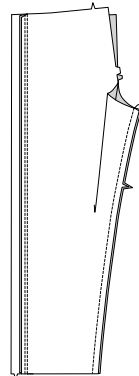
11. On outside, pin piping trim to side edge of back, placing ridge of trim slightly over seamlines, as shown. Baste.



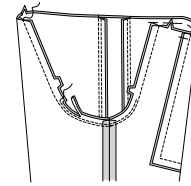
12. Pin SIDE PANEL (16) to front and back, matching notches. Stitch in **DOUBLE-STITCHED** seams, being careful not to cut piping. Press seams toward side panel.



13. Stitch front and back together at inner leg.

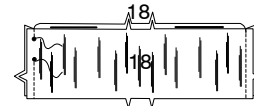
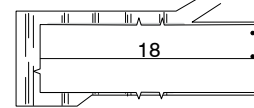


14. For crotch seam, turn one pant leg right side out; slip inside remaining pant leg. Stitch. Stitch again 1/4" (6mm) away in seam allowance along curve. Trim close to second stitching.

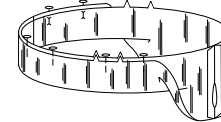


FINISHING

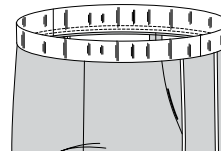
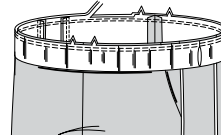
15. Open out rib knit section if necessary. Pin CASING (18) to rib knit strip matching foldline on strip to foldline on pattern piece. Transfer markings. Cut out two sections. Stitch casing sections together at side edges, leaving open between small dots, as shown.



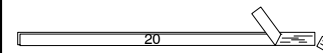
16. With wrong sides together, fold casing along foldline. Press. Pin raw edges together.



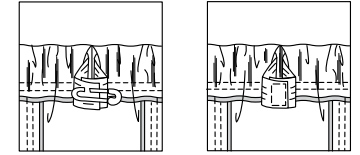
17. Pin casing to upper edge of pants, matching centers and side seams. Stitch, stretching casing to fit. Stitch again 1/4" (6mm) away in seam allowance. Trim close to stitching. Press seam toward pants.



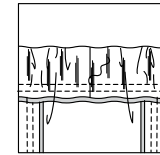
18. Cut elastic the length of GUIDE FOR ELASTIC (20).



19. Insert elastic through opening. Lap ends; hold with safety pin. Stitch ends of elastic securely.

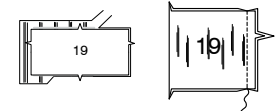


20. **SLIPSTITCH** opening edges together.

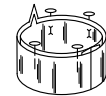


View C:

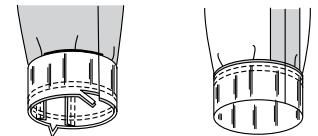
21. Open out rib knit section if necessary. Pin LEG BAND (19) to rib knit strip matching foldline on strip to foldline on pattern piece. Transfer markings. Cut out two sections. Stitch ends of leg band together.



22. With wrong sides together, fold leg band along foldline; press lightly. Pin raw edges together.

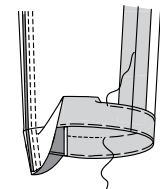


23. Pin leg band to pants matching seams, as shown. Stitch, stretching leg band to fit. Stitch again 1/4" (6mm) away in seam allowance. Trim close to stitching. Press seam up.



View D:

24. Turn up pants hem. Baste close to fold. Turn in 1/4" (6mm) on raw edge. Baste hem in place close to upper edge. Press. **TOPSTITCH** hem along upper basting.





Congrats!

You've completed your sewing adventure

**SHARE
YOUR** LOOK



Post your pattern and tag us
[@simplicity_creative_group](#) and [#simplicitypatterns](#)
for a chance to be featured on our social media.

Look for more PDF patterns at [simplicity.com](https://www.simplicity.com)

Have a question or need help with your sewing project call us at
1-800-782-0323

McCall's
by **design**_{group}

McCall's ©2023 a division of IG Design Group Americas Inc. • Atlanta, GA 30342 USA www.thedesigngroup.com • All Rights Reserved. www.mccall.com • Made in the U.S.A. Fabriqué aux États-Unis.
To be used for individual private home use only and not for commercial or manufacturing purposes. • A usage privé seulement et non à des fins commerciales ou de production en série. • Para uso privado solamente, no se puede utilizar con propósitos de comercialización o de producción en serie.