

**McCall's**

**M8438**



Designed and printed in USA

Average

**MISSES' COATS AND VEST**

**Suggested Fabrics:** Boiled Wool, Flannel, Wool Blends, Wool Flannel. **Lining:** Lining Fabrics. **Interfacing:** Lightweight Fusible.

**Notions: A,B,C:** Two 1" (2.5cm) buttons.

Sizes	4	6	8	10	12	14	16	18	20
European	30	32	34	36	38	40	42	44	46

**BODY MEASUREMENTS: Select pattern size based on body measurements**

Bust	29½	30½	31½	32½	34	36	38	40	42	Ins.
Waist	22	23	24	25	26½	28	30	32	34	"
Hip-9" below waist	31½	32½	33½	34½	36	38	40	42	44	"
Back-neck to waist	15¼	15½	15¾	16	16¼	16½	16¾	17	17¼	"

**Coat and Belt A** 45\*\* 4¾ 4¾ 4¾ 4¾ 4½ 4½ 4¾ 4¾ 5 Yds.

60\*\* 3¾ 3¾ 3¾ 3¾ 3¾ 3¾ 3¾ 3¾ 3¾ "

**Lining A** 45\*\*\* 2½ 2½ 2½ 2½ 2½ 2½ 2½ 2½ 2¾ "

**Interfacing A** 20" 5¼ 5¼ 5¼ 5¼ 5¼ 5¼ 5¼ 5½ 5½ "

**Coat and Belt B** 45\*\* 5 5 5 5½ 5½ 5½ 5½ 5½ 5½ Yds.

60\*\* 3½ 3½ 3½ 3½ 3½ 3½ 3½ 3¾ 3¾ "

**Lining B** 45\*\*\* 3¼ 3¼ 3¼ 3¼ 3¾ 3¾ 3¾ 3¾ 3¾ "

**Interfacing B,C** 20" 6¾ 6¾ 6¾ 6¾ 6¾ 6¾ 6¾ 7¾ 7¾ Yds.

**Vest and Belt C** 45\*\* 5 5 5 5½ 5½ 5½ 5½ 5½ 5½ Yds.

60\*\* 3½ 3½ 3½ 3½ 3¾ 3¾ 3¾ 3¾ 3¾ "

**Lining C** 45\*\*\* 3¾ 3¾ 3¾ 3¾ 3¾ 3¾ 3¾ 3¾ 3¾ "

**FINISHED GARMENT MEASUREMENTS (Includes Design and Wearing Ease)**

**A,B,C Bust** 41 42 43 44 45½ 47½ 49½ 51½ 53½ Ins.

**A,B,C Waist** 40½ 41½ 42½ 43½ 45 47 49 51 53 "

**A,B,C Hip** 44 45 46 47 48½ 50½ 52½ 54½ 56½ "

**Width, lower edge**

**Coat A,B, Vest C** 46 47 48 49 50½ 52½ 54½ 56½ 58½ Ins.

**Finished back length from base of neck**

**Coat A** 35¼ 35½ 35¾ 36 36¼ 36½ 36¾ 37 37¼ Ins.

**Coat B, Vest C** 51¼ 51½ 51¾ 52 52¼ 52½ 52¾ 53 53¼ "

\*with nap \*\*without nap

Moins Facile

**MANTEAUX ET GILET POUR JEUNES FEMMES**

**Tissus Conseillés:** Laine bouillie, Flanelle, Lainages, Flanelle de Laine. **Doublure:** Tissus à doublure. **Entoilage:** Thermocollant léger.

**Merceria: A,B,C:** 2 boutons de 2.5cm.

Tailles	4	6	8	10	12	14	16	18	20
Françaises	32	34	36	38	40	42	44	46	48
Européen	30	32	34	36	38	40	42	44	46

**MESURES DU CORPS: Choisissez la taille du patron basée sur les mesures du corps**

**Poitrine** 75 78 80 83 87 92 97 102 107 cm

**Taille** 56 58 61 64 67 71 76 81 87 "

**Hanches (23cm au-dessous de la taille)**

80 83 85 88 92 97 102 107 112 cm

**Dos du cou à la taille** 39 39.5 40 40.5 41.5 42 42.5 43 44 "

**Manteau et ceinture A** 115cm\* 3.9 4.0 4.0 4.0 4.1 4.1 4.3 4.5 4.6 m

150cm\* 3.0 3.1 3.1 3.1 3.1 3.1 3.3 3.3 3.3 "

**Lining A** 115cm\*\* 2.3 2.3 2.3 2.4 2.4 2.4 2.4 2.5 "

**Entoilage A** 51cm 4.7 4.8 4.8 4.8 4.9 4.9 4.9 5.0 "

**Manteau et ceinture B** 115cm\* 5.3 5.4 5.4 5.4 5.4 5.5 5.7 5.8 5.9 m

150cm\* 3.7 3.8 3.8 3.8 3.8 3.8 4.2 4.2 4.3 "

**Lining B** 115cm\*\* 3.0 3.0 3.0 3.0 3.0 3.1 3.1 3.1 3.1 "

**Entoilage B,C** 51cm 6.2 6.2 6.2 6.2 6.3 6.3 6.3 6.5 6.5 "

**Gilet et ceinture C** 115cm\* 4.6 4.6 4.6 4.6 4.7 4.7 4.7 4.7 4.8 m

150cm\* 3.2 3.2 3.2 3.2 3.2 3.3 3.3 3.4 3.4 "

**Lining C** 115cm\*\* 2.9 2.9 2.9 2.9 2.9 2.9 2.9 3.0 "

**MESURES DES VÊTEMENTS FINI (Motif et aisance de port compris)**

**A,B,C Poitrine** 104 107 109 112 116 121 126 131 136 cm

**A,B,C Taille** 103 105 108 110 114 119 124 130 135 "

**A,B,C Hanches** 112 114 117 119 123 128 133 138 144 "

**Largeur à l'ourlet**

**Manteau A,B, Gilet C** 117 119 122 124 128 133 138 144 149 cm

**Longueur finie -- dos, votre nuque à l'ourlet**

**Manteau A** 90 90 91 91 92 93 93 94 95 cm

**Manteau B, Gilet C** 130 131 131 132 133 133 134 135 135 "

\*avec sens \*\*sans sens



A



B

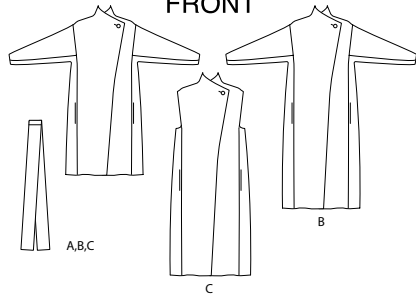


C

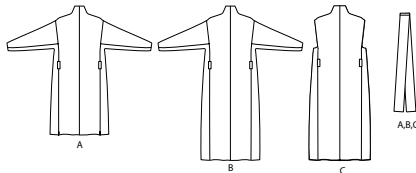


ABC

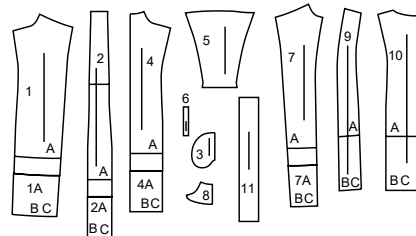
FRONT



BACK

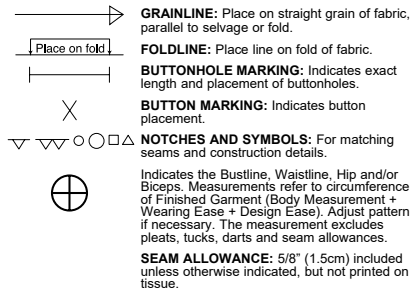


11 PATTERN PIECES

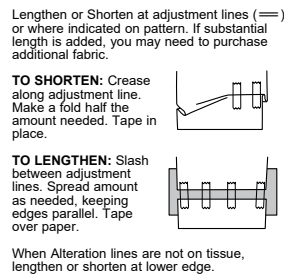


- 1 Front-A,B,C
- 1A Extension-B,C
- 2 Side Panel-A,B,C
- 2A Extension-B,C
- 3 Pocket-A,B,C
- 4 Back-A,B,C
- 4A Extension-B,C
- 5 Sleeve-A,B
- 6 Carrier-A,B,C
- 7 Front Facing-A,B,C
- 7A Extension-B,C
- 8 Back Neck Facing-A,B,C
- 9 Front Lining-A,B,C
- 10 Back Lining-A,B,C
- 11 Tie Belt-A,B,C

PATTERN MARKINGS



ADJUST IF NECESSARY



CUTTING AND MARKING

**SHRINK FABRIC** if not labeled pre-shrunk. Press.

**CIRCLE LAYOUT** for View, Size, Fabric Width.

Use **WITH NAP** layout for fabrics with one-way designs, nap, pile or surface shading. Because most knits have surface shading, a with nap layout is used.

For **DOUBLE THICKNESS (WITH FOLD)** - fold fabric with right sides together.

**\* DOUBLE THICKNESS (WITHOUT FOLD)** - For fabrics with nap, fold fabric crosswise, right sides together. Mark as shown. Cut along crosswise fold of fabric (A). Turn upper layer 180° so arrows go in same direction and place over lower layer, right sides together (B).

For **SINGLE THICKNESS** - place fabric right side up. (For Fur Pile fabrics, place pile side down.)

★ Cut other pieces first, allowing enough fabric to cut this piece. Open fabric. For "Cut 1" pieces, cut piece once on single layer of fabric with piece face up on right side of fabric.

Pattern may have cutting lines for several sizes. Select the proper cutting line or pattern pieces for your size.

Before **CUTTING** place all pieces on fabric according to layout. Pin. (Layouts show approximate position of pattern pieces; position may vary according to your pattern size.) Cut **ACCURATELY**, cutting notches outward.

Before removing pattern, **TRANSFER MARKINGS** and lines of construction to Wrong Side of fabric, using the Pin and Chalk Pencil method or Tracing Paper and Dressmaker Wheel. Markings needed on right side of fabric should be thread traced.

**NOTE:** Broken-line boxes (a|b|c) in layouts represent pieces cut by measurements provided.

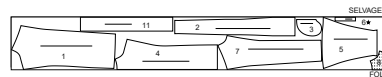
CUTTING LAYOUTS

RIGHT SIDE OF PATTERN	WRONG SIDE OF PATTERN	RIGHT SIDE OF FABRIC	WRONG SIDE OF FABRIC
-----------------------	-----------------------	----------------------	----------------------

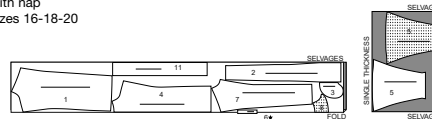
COAT AND BELT A

use pieces: 1 2 3 4 5 6 7 8 11

45" (115 cm)  
with nap  
sizes 4-6-8-10-12-14



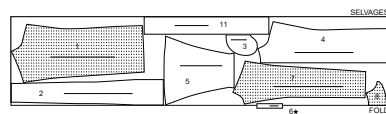
45" (115 cm)  
with nap  
sizes 16-18-20



60" (150 cm)  
with nap  
sizes 4-6-8-10-12-14



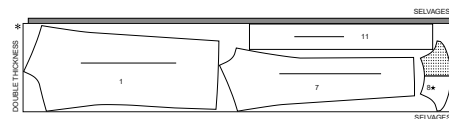
60" (150 cm)  
with nap  
sizes 16-18-20



INTERFACING A

use pieces: 1 7 8 11

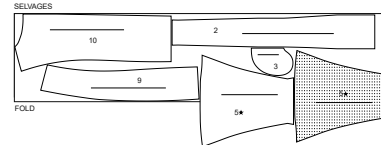
20" (51 cm)  
with nap  
all sizes



LINING A

use pieces: 2 3 5 9 10

45" (115 cm)  
without nap  
all sizes



COAT AND BELT B

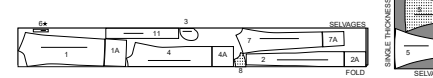
use pieces: 1 1A 2 2A 3 4 4A 5 6 7 7A 8 11

**NOTE:** BEFORE YOU ALTER OR CUT, LAP AND TAPE EXTENSION AND MAIN PIECE TOGETHER, PIECE 1 AND 1A, 2 AND 2A, 4 AND 4A, 7 AND 7A, MATCHING SYMBOLS AND CUT AS ONE.

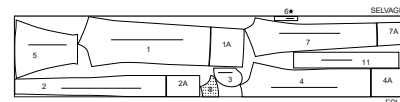
45" (115 cm)  
with nap  
sizes 4-6-8-10-12-14



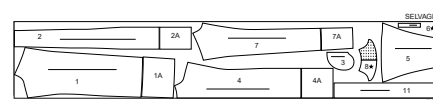
45" (115 cm)  
with nap  
sizes 16-18-20



60" (150 cm)  
with nap  
sizes 4-6-8-10-12-14



60" (150 cm)  
with nap  
sizes 16-18-20

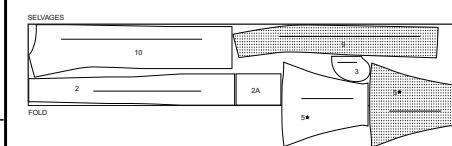


LINING B

use pieces: 2 2A 3 5 9 10

**NOTE:** BEFORE YOU ALTER OR CUT, LAP AND TAPE EXTENSION AND MAIN PIECE TOGETHER, PIECE 2 AND 2A, MATCHING SYMBOLS AND CUT AS ONE.

45" (115 cm)  
without nap  
all sizes

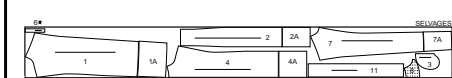


VEST AND BELT C

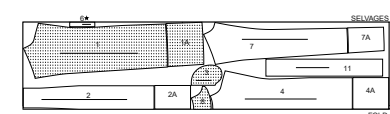
use pieces: 1 1A 2 2A 3 4 4A 6 7 7A 8 11

**NOTE:** BEFORE YOU ALTER OR CUT, LAP AND TAPE EXTENSION AND MAIN PIECE TOGETHER, PIECE 1 AND 1A, 2 AND 2A, 4 AND 4A, 7 AND 7A, MATCHING SYMBOLS AND CUT AS ONE.

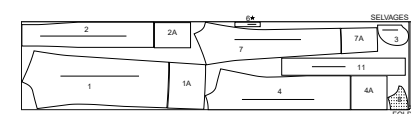
45" (115 cm)  
with nap  
all sizes



60" (150 cm)  
with nap  
sizes 4-6-8-10-12-14-16



60" (150 cm)  
with nap  
sizes 18-20

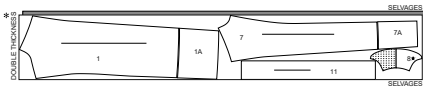


### INTERFACING B,C

use pieces: 1 1A 7 7A 8 11

**NOTE:** BEFORE YOU ALTER OR CUT, LAP AND TAPE EXTENSION AND MAIN PIECE TOGETHER, PIECE 1 AND 1A, 7 AND 7A, MATCHING SYMBOLS AND CUT AS ONE.

20" (51 cm)  
all sizes

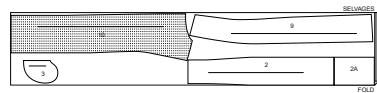


### LINING C

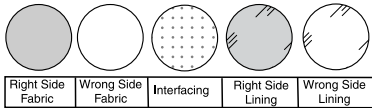
use pieces: 2 2A 3 9 10

**NOTE:** BEFORE YOU ALTER OR CUT, LAP AND TAPE EXTENSION AND MAIN PIECE TOGETHER, PIECE 2 AND 2A, MATCHING SYMBOLS AND CUT AS ONE.

45" (115 cm)  
without nap  
all sizes

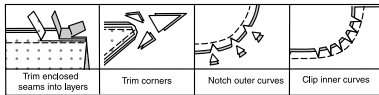


### SEWING INFORMATION FABRIC KEY



### SEAM ALLOWANCES

Use 5/8" (1.5cm) seam allowances unless otherwise indicated.



### PIN AND FIT

Pin or baste seams, **RIGHT SIDE TOGETHER**, matching notches. Fit garment before stitching major seams.

### PRESS

Press seam allowances flat; then open unless otherwise stated. Clip where necessary so they lie flat.

### GLOSSARY

Sewing methods in **BOLD TYPE** have Sewing Tutorial Video available. Scan QR CODE to watch videos:

**CATCHSTITCH** - see "how to catchstitch" video

**EDGESTITCH** - see Machine Stitches: "how to edgestitch" video

**REINFORCE** - see Machine Stitches: "how to reinforce" video

**SLIPSTITCH** - see "hand stitches; how to slipstitch" video

**STAYSTITCH** - see Machine Stitches: "how to do stay-stitching" video

**TRIM** - see how to "trim, clip, and layer seams" video

**UNDERSTITCH** - see Machine Stitches: "how to understitch" video

### SEWING TUTORIALS



Build your skills viewing short, easy-to-follow videos at [simplicity.com/sewingtutorials](http://simplicity.com/sewingtutorials)

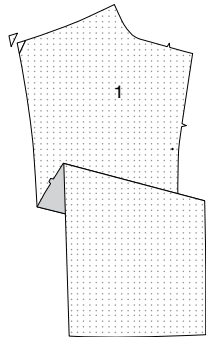
## SEWING DIRECTIONS

### COAT A, B

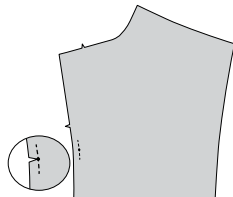
**NOTE:** Illustrated for **View A** unless otherwise indicated.

### COAT FRONT AND SIDE PANEL

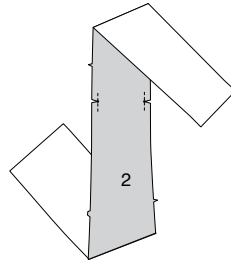
**1.** Trim corners from INTERFACING, as shown. Fuse to wrong side of each matching **FRONT (1)** FABRIC section, following manufacturer's directions.



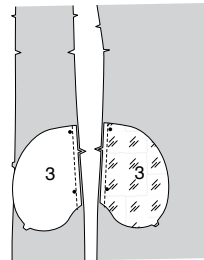
**2.** Using fine stitches, **REINFORCE** seamline on side edge for about 1" (2.5cm) on each side of small dot, stitching through small dot. Clip seam allowance to stitching at small dot, being careful not to clip into stitching.



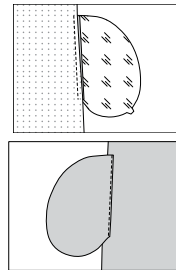
**3.** **REINFORCE** seamline on both side edges of **SIDE PANEL (2)** sections at small dots same as for front. Clip seam allowance to stitching at small dot.



**4.** With **RIGHT** sides together, pin **POCKET (3)** LINING to front, matching large dots and having raw edges even. Stitch in a 3/8" (1cm) seam. Stitch pocket **FABRIC** sections to front edges of side panels in same manner.

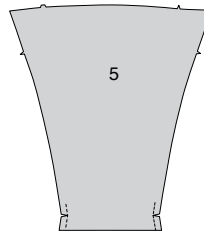


**5.** Press seam toward pocket, pressing pocket out. **UNDERSTITCH** front pockets by stitching through pocket and seam allowance close to seam.

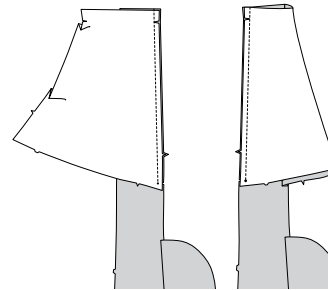


### SLEEVES AND SIDE SEAMS

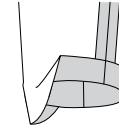
**6.** **REINFORCE** underarm seam of **SLEEVE (5)** at inner corners. Clip seam allowances at inner corners to stitching.



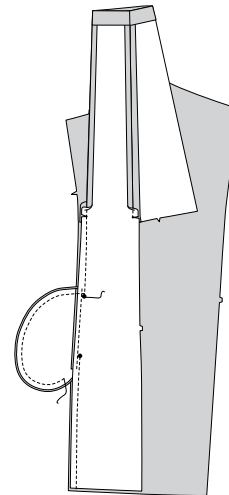
**7.** Pin front underarm edge of sleeve to front edge of side panel, matching small dots. Stitch seam to small dot. Stitch back underarm edge of sleeve to back edge of side panel in same manner.



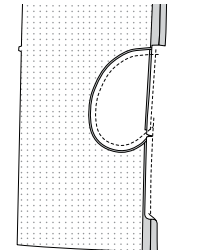
**8.** Turn up 1-1/2" (3.8cm) hem on lower edge of sleeve; press.



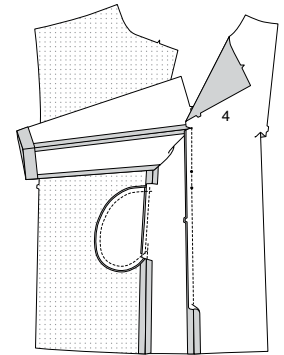
**9.** Pin front edge of side panel to front, matching small and large dots. Stitch seam below small dot on sleeve, leaving seam open between large dots for pockets. Stitch pocket edges together between side seams.



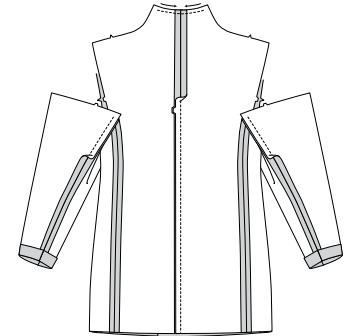
**10.** Clip side panel seam allowance at ends of pocket. Press seam open above and below clips, as shown.



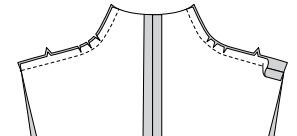
**11.** Pin back edge of side panel to back, matching small dots. Stitch seam below small dot on sleeve; press open.



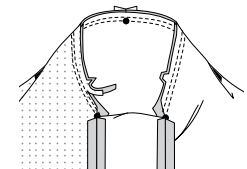
**12.** Stitch center back seam of back sections. **STAYSTITCH** neck edge.



**13.** Stitch back to front at shoulders. **REINFORCE** seam along curves. Press seam open, clipping where necessary.

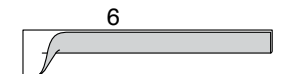


**14.** With right sides together, pin remaining raw edge of sleeve to armhole, placing center small dot at shoulder seams, matching notches and remaining small dots. Bast, then stitch between outer small dots. Stitch again 1/4" (6mm) away from seam within seam allowance; trim close to stitching below notches.



### CARRIERS

**15.** Fold **CARRIER (6)** in half, lengthwise with **WRONG** sides together. Press, setting in a crease.



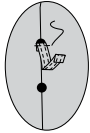
16. Open out long edges of carrier and turn them to **WRONG** side so that they meet at the crease. Press.



17. Fold carrier in half lengthwise, bringing pressed edges together. **EDGESTITCH** long edges. Cut carrier into two pieces, each 4-1/4" (11cm) long.

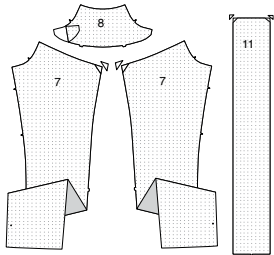


18. On outside, pin carriers over back side seams, turning under ends 3/8" (1cm) at large dots. **EDGESTITCH** ends in place.

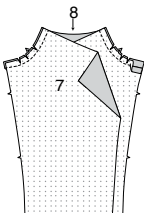


**LINING**

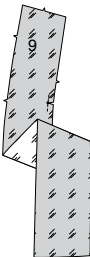
19. Fuse interfacing to wrong side of each matching **FABRIC** section, following manufacturer's directions.



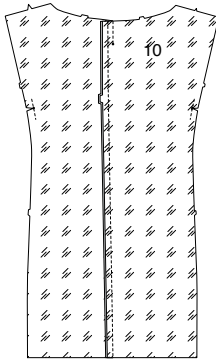
20. Stitch **FRONT FACING** (7) to **BACK FACING** (8) at shoulders; **REINFORCE** curves. Press seam open, clipping curves where necessary.



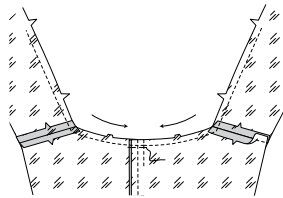
21. Reinforce side edge of **FRONT LINING** (9) sections at upper small dot, stitching through small dot. Clip seam allowance to stitching at small dot.



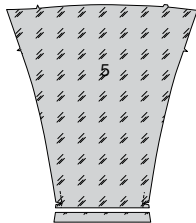
22. **REINFORCE** seam and clip **BACK LINING** (10) sections at small dots same as for front lining. Stitch center back seam of back sections, matching triple notches. Baste back pleat along broken lines above small dot; stitch. Press seam to one side.



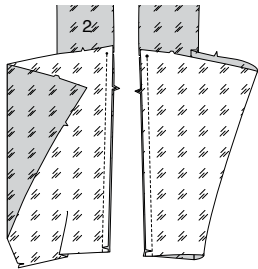
23. Baste across upper edge of pleat. Stitch front lining sections to back lining at shoulders. **STAYSTITCH** neck edge of lining between lower notches in front sections.



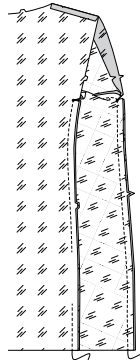
24. **REINFORCE** seam and clip underarm seam of **SLEEVE** (5) **LINING** sections at inner corners, as shown. Trim away 1" (2.5cm) on lower edge.



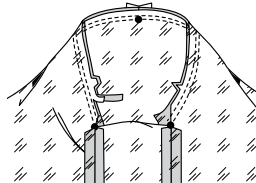
25. **REINFORCE** and clip **SIDE PANEL** (2) **LINING** sections in same manner as for coat side panel. Pin side edges of sleeve lining to corresponding front and back edges of side panel **LINING**, matching small dots. Stitch underarm seams to dots.



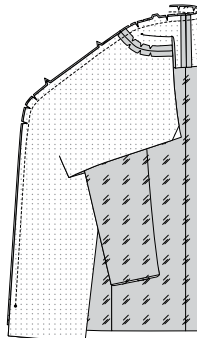
26. Pin front and back edges of side panel lining to corresponding edges of front and back lining, matching small dots. Stitch each seam below small dot, leaving an opening in one back side seat about 5" to 6" (12.5cm-15cm) long.



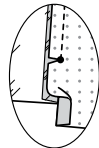
27. With right sides together, pin armhole edge of sleeve lining to coat lining, placing center small dot at shoulder seams, matching notches and remaining small dots; baste. Stitch between small dots. Stitch again 1/4" (6mm) away from seam within seam allowance; trim close to stitching.



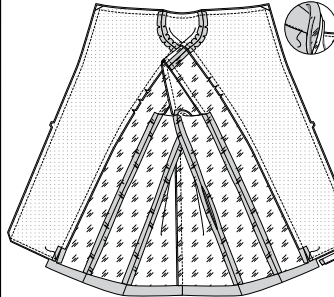
28. Clip back neck edge of lining to stay-stitching along curves. Pin facing to front and neck edges of lining, matching seams, and small dots. Stitch seam above small dots. Clip curves.



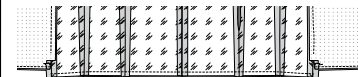
29. Clip front facing at end of stitching, as shown. Press seam toward lining, pressing under 5/8" (1.5cm) on inner edge of facing below clip, as shown.



30. With right sides together and raw edges even, pin facing to coat, matching seams. Stitch exactly 1-1/2" (3.8cm) above lower edge of facing and then along seam line on front and neck edges, pivoting at corners and being careful not to catch in lining. **TRIM** seam and corners. **UNDERSTITCH** front edges of facing as far as possible.

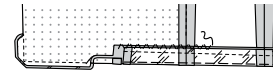


31. Pin lower edges of coat and lining, matching centers back and seams, keeping front facing out of the way. Stitch lower edges together in a 1/2" (1.3cm) seam.



**FINISHING**

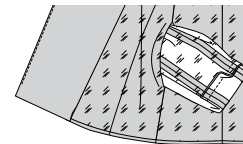
32. Turn coat around so the **WRONG** side of the coat is facing you. Turn up hem on lower edge of coat; baste close to turned edge. Press. **CATCHSTITCH** hem to coat, being careful not to catch in opening edges of lining or to let stitches show on outside.



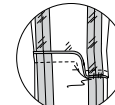
33. Open out pressed edge on lower edge of sleeve. In order to match seams correctly, turn seam allowance on lower sleeve edges of coat and lining toward each other at underarm seams, as shown. Anchor the turned edges with a pin. (This will enable you to easily pin the lower edges together when you are ready to stitch the sleeve edges together.)



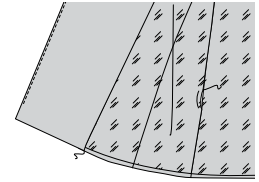
34. Turn coat **RIGHT** side out. Use a point turner to push out corners of lapel. Press lower edge of facing and front and neck edges of coat. Pull sleeve through opening in back side seam, having **WRONG** sides out. Separate coat sleeve from lining sleeve. With **RIGHT** sides together, pin sleeve edges together, matching underarm seams. Remove anchoring pin. Stitch sleeve edge. **TRIM** seam.



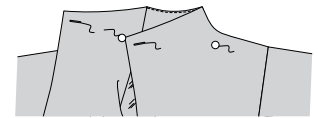
35. Turn up sleeve hem allowance where previously pressed. Tack hem to seams, as shown.



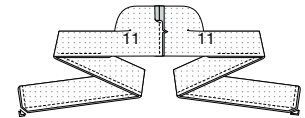
36. Turn sleeve lining to **INSIDE**. Press up lower hem. Slip hand through opening in back side seam. Tack seams of coat and lining loosely together (not shown). **SLIPSTITCH** opening in side seam closed. Allow coat and sleeve lining to drop. Press folded edges in place. **SLIPSTITCH** front facing to hem and remaining front edges of lining to facing.



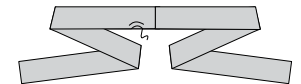
37. Make buttonholes in fronts at marking. On outside, sew button to left front at small dot. Sew remaining button to inside of right front at small dot, being careful not to let stitches show on outside.



38. Stitch notched ends of tie belt (11). Fold belt in half, lengthwise, with **RIGHT** sides together. Stitch in a 3/8" (1cm) seam leaving an opening for turning. **TRIM** seam.



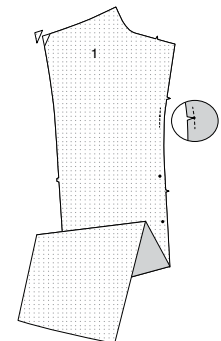
39. Turn belt; press. **SLIPSTITCH** opening closed.



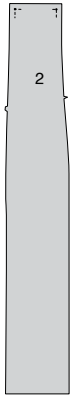
**VEST C**

**VEST FRONT AND BACK**

1. Trim corners from **INTERFACING**, as shown. Fuse to wrong side of each matching **VEST FABRIC** section, following manufacturer's directions. **REINFORCE** side edge for about 1" (2.5cm) on each side of small dot, stitching through small dot.

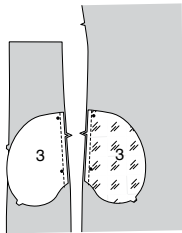


**2. REINFORCE** seam line on upper corners of side edge of SIDE PANEL (2) sections, as shown.

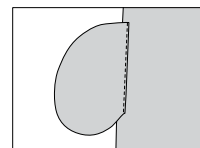
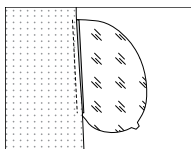


**3. Apply pockets** to side edges of front and side panel sections as follows:  
With RIGHT sides together, pin POCKET (3) LINING to front, matching large dots and having raw edges even. Stitch in a 3/8" (1cm) seam. Stitch pocket FABRIC sections to front edges of side panels in same manner.

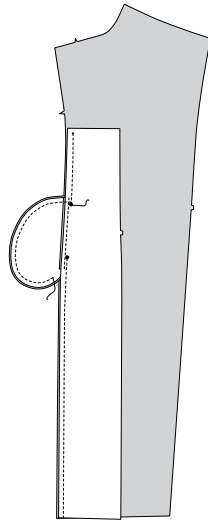
Press seam toward pocket, pressing pocket out.



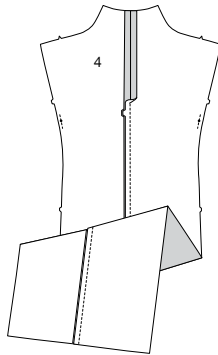
**4. UNDERSTITCH** front pockets by stitching through pocket and seam allowance close to seam.



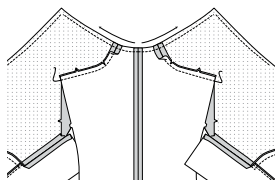
**5. Pin front edge** of side panel to FRONT (1), matching small and large dots. Stitch seam below small dot, leaving seam open between large dots for pocket openings. Stitch pocket edges together between side seams.



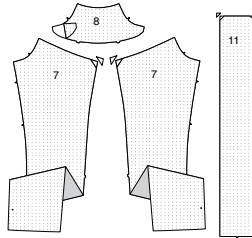
**6. REINFORCE** seam line on side edge of BACK (4) sections for about 1" (2.5cm) on each side of small dot, stitching through small dot. Stitch back sections together at center back seam.



**7. Stitch back** to front sections at shoulders. Press seam open, clipping where necessary. STAYSTITCH neck edge, as shown.

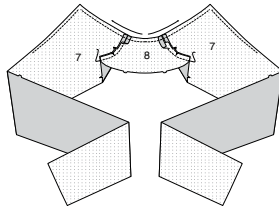


**8. Fuse interfacing** to each side of matching FABRIC section, following manufacturer's directions.

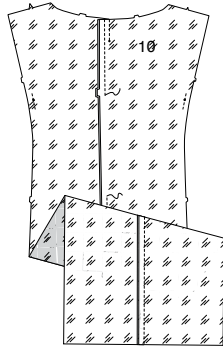


**FACING AND LINING**

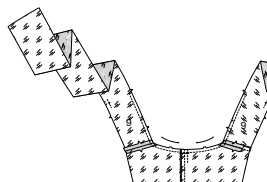
**9. Stitch FRONT FACING (7) to BACK FACING (8) at shoulders.** Press seam open, clipping seam allowances where necessary. STAYSTITCH neck edge, as shown.



**10. REINFORCE BACK (10) LINING** sections along seam line at small dot on side edge same as for front. Stitch center back seam lining sections, leaving a large opening for turning and hemming. Baste back pleat along broken lines. Stitch pleat as basted above small dot.



**11. Press pleat** toward one side; baste across upper edge of pleat. Stitch back lining to FRONT LINING (9) sections at shoulders. STAYSTITCH neck edge of lining between lower notches in front sections.

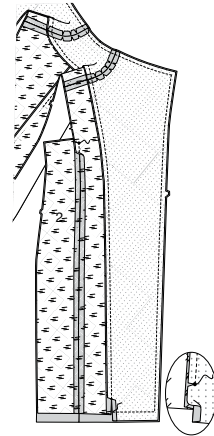


**12. With right sides** together, pin lining to facing, matching centers back, shoulder seams, and small dots, clipping neck edge of lining to stay-stitching where necessary. Stitch seam above small dots.

Clip only the facing seam allowance at end of stitching, as shown. Press seam toward lining, pressing under 5/8" (1.5cm) on inner edge of facing below clip, as shown.

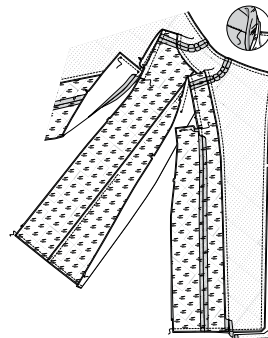
Pin front edge of SIDE PANEL (2) LINING to front lining, matching small dots; stitch seam below small dot.

With right sides together and raw edges even, pin facing to vest, matching seams. Stitch exactly 1-1/2" (3.8cm) above lower edge of facing and then along seam line on front and neck edges, pivoting at corners and being careful not to catch in lining.

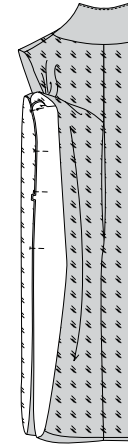


**13. Clip front and back lining** to reinforcement stitching at small dots.

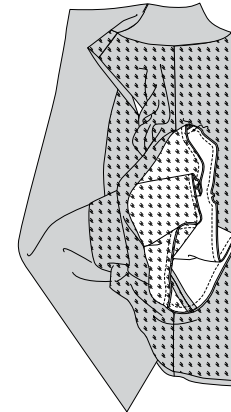
With right sides together and raw edges even, pin lining to coat along lower and armhole edges, matching seams, and small dots. Stitch armhole edges together between small dots, breaking and reinforcing stitches at small dots on inner corners. Stitch lower edges of lining to vest in a 1/2" (1.3cm) seam. TRIM seam and corners. UNDERSTITCH front edges of facing as far as possible.



**14. Turn vest right side** out; press. Use a point turner to push out corners of lapel. With RIGHT sides together, pin side edges of vest back and side panel together, matching small dots at underarms and seams on lower edges. Pin vest and as much of the lining as you can.

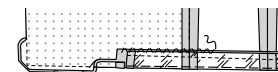


**15. Pull side back edges** through opening in center back seam, having WRONG sides out. Separate vest from lining. Pin remaining raw edges of lining back and panel together. Stitch seam in one complete stitching, breaking and reinforcing stitches at small dots.



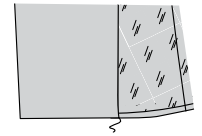
**CARRIERS AND FINISHING**

**16. Turn lining** back in place. Press. Turn vest around so the WRONG side of the vest is facing you. Turn up hem on lower edge of vest; baste close to turned edge. Press. CATCHSTITCH hem to vest, being careful not to catch in opening edges of lining or to let stitches show on outside.

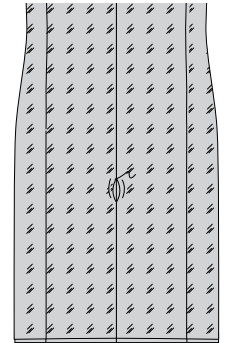


**17. Allow vest lining** to drop. Press folded edges in place.

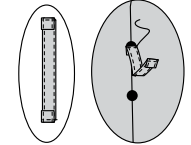
SLIPSTITCH front facing to hem and remaining front edges of lining to facing.



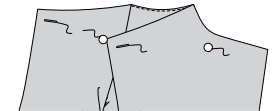
**18. SLIPSTITCH** back opening in lining. Make carriers same as for Coat- see steps 15 through 17.



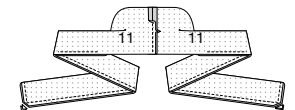
**19. Press under 3/8" (1cm)** on ends of carrier; EDGESTITCH close to pressed edge. On outside, pin carriers over side back seams of vest, placing ends at large dots. Invisibly hand-sew carriers in place to vest, keeping lining free.



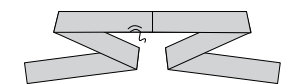
**20. Make buttonholes** in fronts at marking. On outside, sew button to left front at small dot. On inside, sew remaining button to right front at small dot, being careful not to let stitches show on outside.



**21. Stitch notched ends** of tie belt (11). Fold belt in half, lengthwise, with RIGHT sides together. Stitch, leaving an opening to turn. TRIM seam.



**22. Turn belt;** press. SLIPSTITCH opening closed.





# Congrats!

You've completed your sewing adventure

---

**SHARE  
YOUR** LOOK



Post your pattern and tag us  
[@simplicity\\_creative\\_group](#) and [#simplicitypatterns](#)  
for a chance to be featured on our social media.

Look for more PDF patterns at [simplicity.com](http://simplicity.com)

Have a question or need help with your sewing project call us at  
1-800-782-0323

**McCall's**  
by **design**<sub>group</sub>