

McCall's

M8437

Brandi
JOAN



To customize your look like Brandi Joan, See Sew Along Video.

Scan QR code for a Sew-Along video tutorial.
Scannez le code QR pour un didacticiel vidéo de couture.



Designed and printed in USA

Average

MISSES' OVERALLS

Suggested Fabrics: Chino, Cotton Blends, Denim, Twill. **Interfacing:** Lightweight Fusible.

Notions: Ten ¼" (6mm) double-cap rivets, four ⅝" heavy duty jean snaps, two overall bottoms and buckles with a 1½" (4cm) opening.

Sizes	6	8	10	12	14	16	18	20	22	24
European	32	34	36	38	40	42	44	46	48	50

BODY MEASUREMENTS: Select pattern size based on body measurements

Bust	30½	31½	32½	34	36	38	40	42	44	46	Ins.
Waist	23	24	25	26½	28	30	32	34	37	39	"
Hip-9" below waist	32½	33½	34½	36	38	40	42	44	46	48	"
Back-neck to waist	15½	15¾	16	16¼	16½	16¾	17	17¼	17½	17¾	"

Overalls

45"*	3	3	3	3½	3½	3½	3¾	3¾	3½	3¾	Yds.
60"*	2¼	2¾	2¾	2¾	2½	2½	2½	2¾	2¾	2¾	"
Interfacing											
20"	⅝	⅝	⅝	⅝	⅝	¾	¾	¾	¾	¾	Yd.

FINISHED GARMENT MEASUREMENTS (Includes Design and Wearing Ease)

Waist	28	29	30	31½	33½	35½	37½	39½	41½	43½	Ins.
Hip	35½	36½	37½	39	41	43	45	47	49	51	Ins.
Width, each leg											
Overalls	16	16½	17	18	18½	19	19½	20	20½	21	Ins.
Finished back length from base of neck											
Overalls	58	58¼	58½	58¾	59	59¼	59½	59¾	60	60¼	Ins.

*with nap **without nap

Moins Facile

SALOPETTE POUR JEUNES FEMMES

Tissus Conseillés: Chino, Cotonnades, Denim, Twill. **Entoilage:** Thermocollant léger.

Mercerie: 10 rivets double-calotte de 6mm, quatre bouton-pression jean résistants de 1.5 cm, 2 boutons et boucles pour salopette à ouverture de 4cm.

Tailles	6	8	10	12	14	16	18	20	22	24
Françaises	34	36	38	40	42	44	46	48	50	52
Européen	32	34	36	38	40	42	44	46	48	50

MESURES DU CORPS: Choisissez la taille du patron basée sur les mesures du corps

Poitrine	78	80	83	87	92	97	102	107	112	117	cm
Taille	58	61	64	67	71	76	81	87	94	99	"
Hanches (23cm au-dessous de la taille)											
	83	85	88	92	97	102	107	112	117	122	cm

Dos du cou à la taille 39.5 40 40.5 41.5 42 42.5 43 44 44.5 45 "

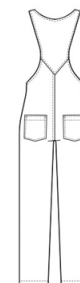
Salopette

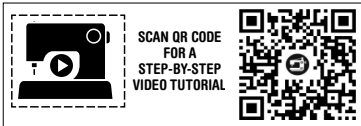
115cm*	2.7	2.7	2.7	2.7	2.7	2.9	3.1	3.1	3.2	3.3	m
150cm*	2.1	2.2	2.2	2.2	2.2	2.3	2.3	2.4	2.4	2.4	"
Entoilage											
51cm	0.6	0.6	0.6	0.6	0.6	0.6	0.7	0.7	0.7	0.7	m

MESURES DES VÊTEMENTS FINI (Motif et aisance de port compris)

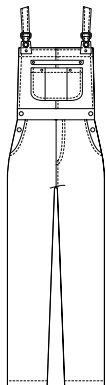
Taille	71	74	76	80	85	90	95	100	105	110	cm
Hanches	90	93	95	99	104	109	114	119	124	130	m
Largeur, chaque jambe											
Salopette	41	42	43	46	47	48	50	51	52	53	cm
Longueur finie – dos, votre nuque à l'ourlet											
Salopette	147	148	149	149	150	150	151	152	152	153	cm

*avec sens **sans sens

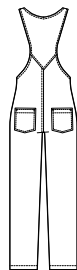




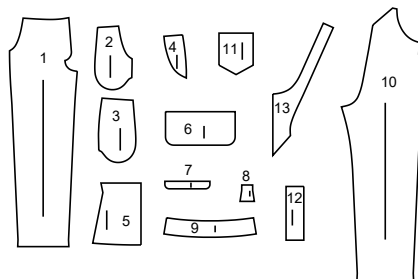
FRONT



BACK



13 PATTERN PIECES



- 1 Front
- 2 Pocket Facing
- 3 Pocket
- 4 Side Front Facing
- 5 Bib Front
- 6 Pocket
- 7 Flap
- 8 Tab
- 9 Front Band
- 10 Back
- 11 Back Pocket
- 12 Extension
- 13 Bib Back

PATTERN MARKINGS

GRAINLINE: Place on straight grain of fabric, parallel to selvage or fold.

FOLDLINE: Place line on fold of fabric.

BUTTONHOLE MARKING: Indicates exact length and placement of buttonholes.

BUTTON MARKING: Indicates button placement.

NOTCHES AND SYMBOLS: For matching seams and construction details.

Indicates the Bustline, Waistline, Hip and/or Biceps. Measurements refer to circumference of Finished Garment (Body Measurement + Wearing Ease + Design Ease). Adjust pattern if necessary. The measurement excludes pleats, tucks, darts and seam allowances.

SEAM ALLOWANCE: 5/8" (1.5cm) included unless otherwise indicated, but not printed on tissue.

ADJUST IF NECESSARY

Lengthen or Shorten at adjustment lines (==) or where indicated on pattern. If substantial length is added, you may need to purchase additional fabric.

TO SHORTEN: Crease along adjustment line. Make a fold half the amount needed. Tape in place.

TO LENGTHEN: Slash between adjustment lines. Spread amount as needed, keeping edges parallel. Tape over paper.

When Alteration lines are not on tissue, lengthen or shorten at lower edge.

CUTTING AND MARKING

SHRINK FABRIC if not labeled pre-shrunk. Press.

CIRCLE LAYOUT for View, Size, Fabric Width.

Use **WITH NAP** layout for fabrics with one-way designs, nap, pile or surface shading. Because most knits have surface shading, a with nap layout is used.

For **DOUBLE THICKNESS (WITH FOLD)** - fold fabric with right sides together.

*** DOUBLE THICKNESS (WITHOUT FOLD)** - For fabrics with nap, fold fabric crosswise, right sides together. Mark as shown. Cut along crosswise fold of fabric (A). Turn upper layer 180° so arrows go in same direction and place over lower layer, right sides together (B).

For **SINGLE THICKNESS** - place fabric right side up. (For Fur Pile fabrics, place pile side down.)

★ Cut other pieces first, allowing enough fabric to cut this piece. Open fabric. For "Cut 1" pieces, cut piece once on single layer of fabric with piece face up on right side of fabric.

Pattern may have cutting lines for several sizes. Select the proper cutting line or pattern pieces for your size.

Before **CUTTING** place all pieces on fabric according to layout. Pin. (Layouts show approximate position of pattern pieces; position may vary according to your pattern size.) Cut ACCURATELY, cutting notches outward.

Before removing pattern, **TRANSFER MARKINGS** and lines of construction to Wrong Side of fabric, using the Pin and Chalk Pencil method or Tracing Paper and Dressmaker Wheel. Markings needed on right side of fabric should be thread traced.

NOTE: Broken-line boxes (a| b| c|) in layouts represent pieces cut by measurements provided.

CUTTING LAYOUTS

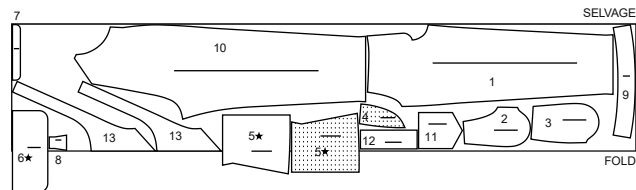
NOTE: To customize your look like Brandi Joan, see "Sew-Along" video.

RIGHT SIDE OF PATTERN	WRONG SIDE OF PATTERN	RIGHT SIDE OF FABRIC	WRONG SIDE OF FABRIC
-----------------------	-----------------------	----------------------	----------------------

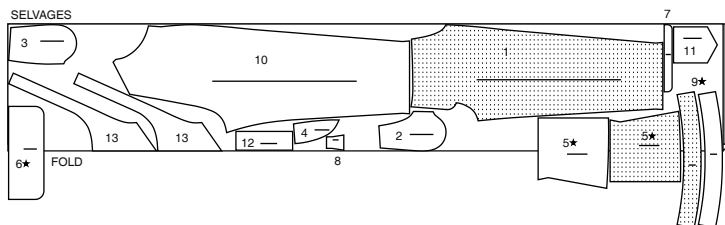
OVERALLS

use pieces: 1 2 3 4 5 6 7 8 9 10 11 12 13

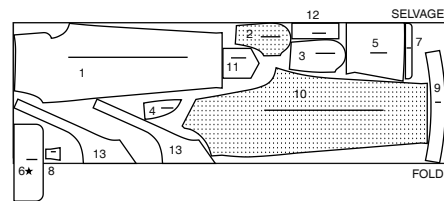
45" (115 cm)
with nap
sizes 6-8-10-12-14-16



45" (115 cm)
with nap
sizes 18-20-22-24



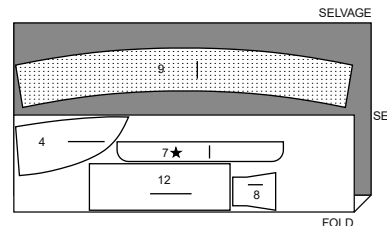
60" (150 cm)
with nap
all sizes



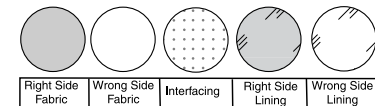
INTERFACING

use pieces: 4 7 8 9 12

20" (51 cm)
all sizes

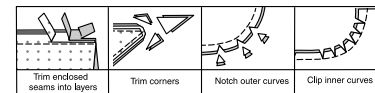


SEWING INFORMATION
FABRIC KEY



SEAM ALLOWANCES

Use 5/8" (1.5cm) seam allowances unless otherwise indicated.



PIN AND FIT

Pin or baste seams, RIGHT SIDE TOGETHER, matching notches. Fit garment before stitching major seams.

PRESS

Press seam allowances flat; then open unless otherwise stated. Clip where necessary so they lie flat.

GLOSSARY

Sewing terms appearing in **BOLD TYPE** in Sewing Instructions are explained below.

EDGESTITCH - Stitch close to finished edge or seam.

FINISH - Stitch 1/4" (6mm) from raw edge and finish with one of the following: (1) Pink OR (2) Overcast OR (3) Turn in along stitching and stitch close to fold OR (4) Overlock.

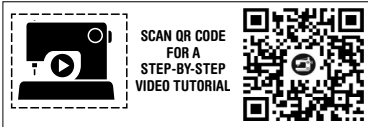
OPTIONAL FOR HEMS: Apply Seam Binding.

NARROW HEM - Turn in hem; press, easing in fullness if necessary. Open out hem. Turn in again so raw edge is along crease; press. Turn in along crease; stitch.

REINFORCE - Stitch along seamline where indicated in sewing instructions, using small machine stitches.

TOPSTITCH - On outside, stitch 1/4" (6mm) from edge, seam or previous stitching, using presser foot as guide, or stitch where indicated in instructions.

UNDERSTITCH - Open out facing or underside of garment; stitch to seam allowance close to seam.

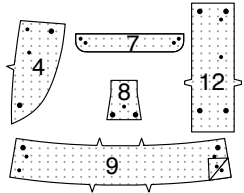


OVERALLS

Note: Topstitching and edgestitching around pockets are optional.

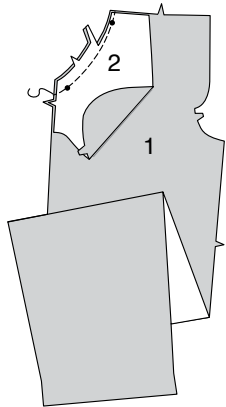
INTERFACING

1. Pin INTERFACING to wrong side of each matching FABRIC section. Fuse, following manufacturer's instructions.

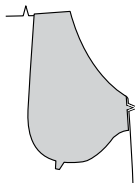


SIDE POCKETS

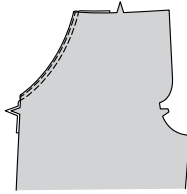
2. Stitch each POCKET FACING (2) section to each upper side edge of FRONT (1). Trim.



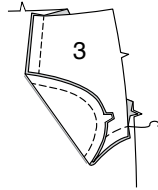
3. Turn pocket to inside. Press.



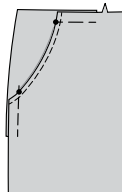
4. **TOPSTITCH** and **EDGE**STITCH upper side edge of front.



5. Stitch one **POCKET** (3) section to each pocket facing at outer edge, keeping front free.

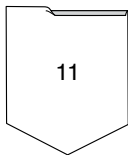


6. Baste upper and side edges.

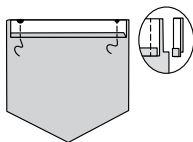


LOWER BACK AND SEAMS

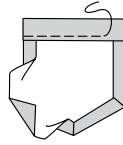
7. Turn in 1/4" (6mm) on upper edge of each **BACK** **POCKET** (11). Press.



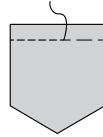
8. Turn upper edge to outside along foldline. Stitch ends. Trim.



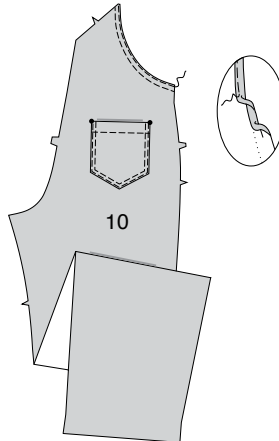
9. Turn upper edge of pocket to inside, turning in remaining seam allowances and diagonally folding corners. Press. Baste close to inner pressed edge.



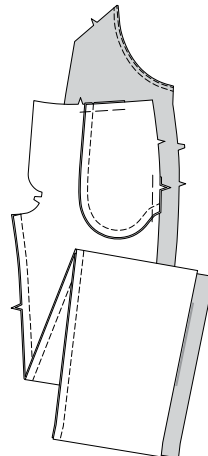
10. **TOPSTITCH** along basting.



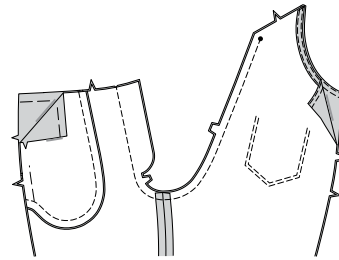
11. Pin pocket to **BACK** (10), matching symbols. **EDGE**STITCH and **TOP**STITCH side and lower edges, backstitching to reinforce upper ends. **NARROW HEM** side edges of back. **EDGE**STITCH side edges.



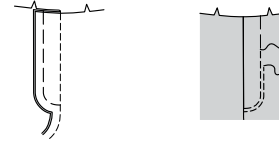
12. Stitch front and back together at inner leg edges, stretching back to fit between upper edge and notch.



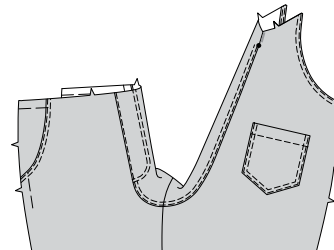
13. Stitch crotch seam, stitching along line on center front, ending at large dot.



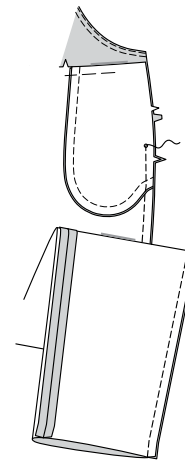
14. Turn seam toward left front; press. Baste in place. On outside, **TOPSTITCH** left front as basted. **TOPSTITCH** again 1/4" (6mm) from previous stitching.



15. **EDGE**STITCH and **TOP**STITCH entire crotch seam along left side, ending top-stitching at lower fly edge, as shown.



16. Stitch back and front together at sides, leaving open above large dot. Back-stitch to reinforce seam.

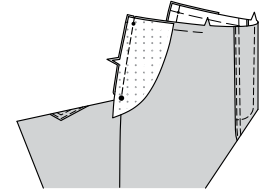


SIDE FACINGS

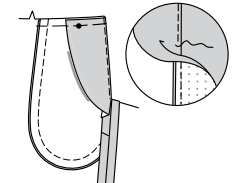
17. **FINISH** unmarked edges of **SIDE FRONT FACING** (4).



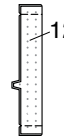
18. On outside, pin facing to side edges of front matching small and large dots. Baste. Stitch ending at large dot. Trim seam.



19. **UNDER**STITCH facing. Turn front facing to inside matching markings. Press. Baste upper raw edges together.



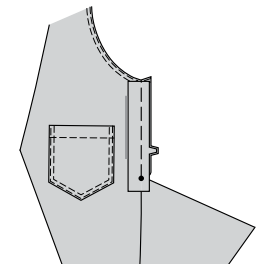
20. Fold **EXTENSION** (12) in half lengthwise with right sides together. Stitch ends. Trim.



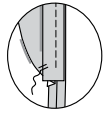
21. Turn extension right side out. Press. Baste raw edges together. **FINISH** raw edges if you prefer.



22. On outside, pin extension to side edges of back matching notches. Stitch.

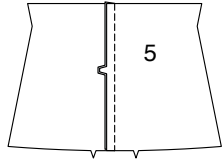


23. Turn seam toward garment pressing extension out. Baste upper raw edges together. Hand-tack lower edges of facing and extension together.

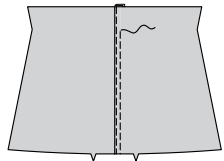


BIB FRONT

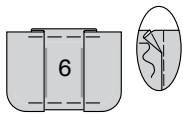
24. With right sides together, stitch center front seam of BIB FRONT (5) sections. Press seam toward left side.



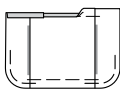
25. On outside, TOPSTITCH center front seam.



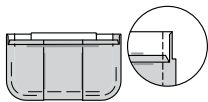
26. To make pleats in POCKET (6), on outside, fold along solid lines. Bring folds to broken lines; pin. Baste across upper and lower edges.



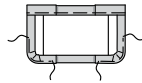
27. Stitch curved edges of pocket 3/8" (1cm) from raw edge, using long machine stitches, as shown. Turn under 1/4" (6mm) on upper edge of pocket.



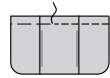
28. Turn upper edge to outside along foldline; stitch ends. Trim.



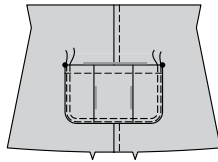
29. Turn upper edge of pocket to inside, turning in seam allowances on remaining edges; pull threads to ease in fullness on curves. Press. Baste close to inner pressed edge.



30. On outside TOPSTITCH along basting.



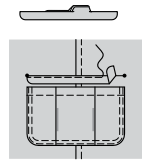
31. On outside, pin pocket to bib front matching symbols, placing pressed edge along pocket line. EDGESTITCH and TOPSTITCH side and lower edges, reinforcing upper ends.



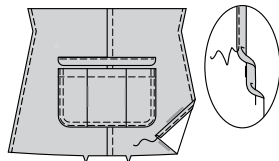
32. For flap, with right sides together, pin FLAP (7) sections together matching small dots. Stitch along outer edge, in a 3/8" (1cm) seam, leaving an opening large enough for turning. Trim seam.



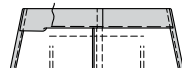
33. Turn flap right side out. Press. Press under raw opening edges of flap. On outside, pin flap to upper edge of bib front, matching small dots. Baste. EDGESTITCH flap in place, closing opening, as shown.



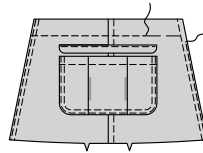
34. NARROW HEM side edges of bib front.



35. Press under 1/4" (6mm) on upper edge of bib. Press upper edge to inside along fold line. Press. Baste close to lower pressed edge.



36. On outside, stitch facing as basted. EDGESTITCH side edges of bib.



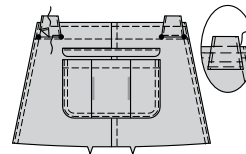
37. For tabs, with right sides together, pin TAB (8) sections together matching markings. Stitch side edges in a 3/8" (1cm) seam, leaving unmarked edge open. Trim.



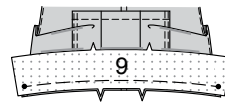
38. Turn tab right side out. Press. EDGESTITCH side edges of tab. Fold along fold line. Press.



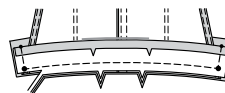
39. On outside, pin tabs to upper edge of bib, matching large dots, placing finished edge of tab along placement line. EDGESTITCH lower edge of tab in place. TOPSTITCH upper edge of bib, catching in upper edge of tab, as shown. OPTIONAL: Stitch again 1/4" (6mm) from lower edge stitching, and close to upper edge of tab to secure.



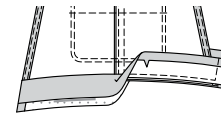
40. On outside, pin interfaced FRONT BAND (9) section to lower edge of bib, matching large dots and notches. Baste.



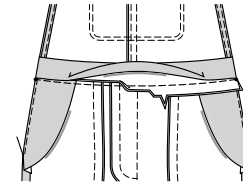
41. Press under 1/2" (1.3cm) on lower edge of front band facing. On inside, pin facing to lower edge of bib, matching large dots. Baste. Stitch seam, pivoting with needle in fabric at large dots, keeping side edges of bib free. Trim seam.



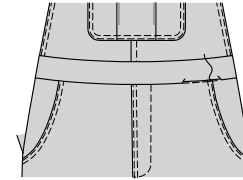
42. Press seam toward bands pressing bands out.



43. With right sides together, pin lower front to band matching notches. Stitch, keeping loose end of band free. Press seam toward band. Trim seam.

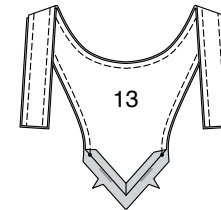


44. Pin pressed edge of band over seam, placing pins on outside. On outside, stitch in the ditch or "groove" of seam, catching in pressed edges on inside.

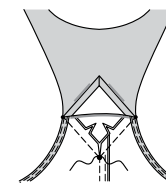


BIB BACK

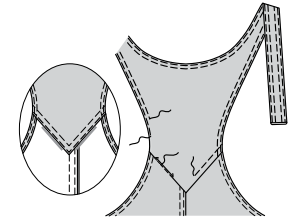
45. Press under 1/2" (1.3cm) lower marked edge of BIB BACK (13). With right sides together pin facing to bib matching centers. Stitch side and neck edges in a 3/8" (1cm) seam, leaving ends of straps and lower edges open. Trim.



46. Turn bib right side out. Press. REINFORCE lower edge of bib back on each side of large dot. Clip to large dot. With right sides together pin bib to upper edge of back matching markings. Stitch bib in place, stitching along stitching line, breaking stitching at large dot, as shown. Press seam up.

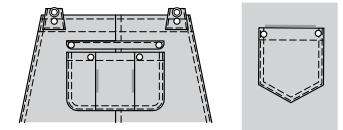


47. Pin pressed edge of bib facing over seam, placing pins on outside. On outside, stitch in the ditch or "groove" of seam, catching in pressed edges on inside. EDGESTITCH and TOPSTITCH seam. EDGESTITCH and TOPSTITCH finished side and neck edges of bib.

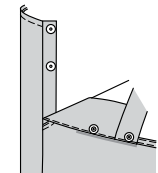


FINISHING

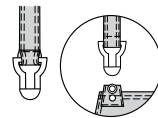
48. Apply rivets to bib front and corners of back pockets at markings, following manufacturer's directions. Apply buttons to tabs, as shown.



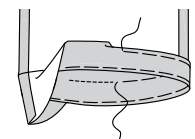
49. Apply socket half of snaps to side back extension at markings. Apply knob half of snaps to front at markings, following manufacturer's directions.



50. For straps, slip each shoulder strap through overall buckle. Turn strap back along foldline, turning under seam allowance on end. Stitch close to edge, as shown.



51. Turn up hem. Baste close to fold. Turn in 1/4" (6mm) on raw edge, easing in fullness if necessary. Baste hem in place close to upper edge. Press. TOPSTITCH hem along upper basting, as shown.





Congrats!

You've completed your sewing adventure

**SHARE
YOUR** LOOK



Post your pattern and tag us
[@simplicity_creative_group](#) and [#simplicitypatterns](#)
for a chance to be featured on our social media.

Look for more PDF patterns at simplicity.com

Have a question or need help with your sewing project call us at
1-800-782-0323

McCall's
by **design**^{group}