

**McCall's**

**M8435**



Designed and printed in USA

Scan QR code for a Sew-Along video tutorial.  
Scannez le code QR pour un didacticiel vidéo de couture.



Average

**WOMEN'S KNIT DRESSES**

**Suggested Fabrics:** Stretch Knits only (35% stretch) such as Cotton Knits, Interlock, Ponte, Rib Knit. See Stretch Gauge. **Interfacing:** Fusible Knit.

**Notions:** **A:** Eight 1" (2.5cm) buttons. **B:** Thirteen 1" (2.5cm) buttons, 6½ yds. (6.1m) of ¼" (6mm) piping. **C:** Eleven 1" (2.5cm) buttons.

Sizes	20W	22W	24W	26W	28W	30W	32W	34W	36W	38W
European	46	48	50	52	54	56	58	60	62	64

**BODY MEASUREMENTS: Select pattern size based on body measurements**

<b>Bust</b>	42	44	46	48	50	52	54	56	58	60	Ins.
<b>Waist</b>	35	37	39	41½	44	46½	49	51½	53	54½	"
<b>Hip-9" below waist</b>	44	46	48	50	52	54	56	58	60	62	"
<b>Back-neck to waist</b>	17¼	17¾	17½	17¾	17¾	17¾	18	18½	18¼	18¾	"

**Dress A**

60"	2¼	2¼	2¼	2¼	2¾	2¾	2¾	2½	2½	2½	Yds.
-----	----	----	----	----	----	----	----	----	----	----	------

**Interfacing A**

20"	1¼	1¼	1¼	1¼	1¼	1¼	1¼	1¼	1¾	1¾	"
-----	----	----	----	----	----	----	----	----	----	----	---

**Dress and Belt B**

60"	1¾	2¼	2¼	2¼	2¾	2¾	2¾	2½	2½	2½	Yds.
-----	----	----	----	----	----	----	----	----	----	----	------

**Contrast B (Neckbands, Placket, Pocket and Sleeve Bands, Belt)**

60"	1¼	1¾	1¾	1¾	1¾	1½	1½	1½	1½	1½	Yds.
-----	----	----	----	----	----	----	----	----	----	----	------

**Interfacing B**

20"	1¾	1¾	1¾	1¾	1¾	1¾	1¾	1¾	2	2	"
-----	----	----	----	----	----	----	----	----	---	---	---

**Dress C**

60"	2½	2½	2¾	2¾	2¾	2¾	3	3	3	3½	Yds.
-----	----	----	----	----	----	----	---	---	---	----	------

**Contrast C (Neckbands, Placket, Pocket and Sleeve Bands)**

60"	1¼	1¼	1¼	1¼	1¼	1¼	1¼	1¼	1¾	1¾	Yds.
-----	----	----	----	----	----	----	----	----	----	----	------

**Interfacing C**

20"	1¾	1½	1½	1½	1½	1½	1½	1½	1½	1½	"
-----	----	----	----	----	----	----	----	----	----	----	---

**FINISHED GARMENT MEASUREMENTS (Includes Design and Wearing Ease)**

<b>A,B,C Bust</b>	41½	43½	45½	47½	49½	51½	53½	55½	57½	59½	Ins.
-------------------	-----	-----	-----	-----	-----	-----	-----	-----	-----	-----	------

<b>A,B,C Waist</b>	39	41	43	45	47	49	51	53	55	57	"
--------------------	----	----	----	----	----	----	----	----	----	----	---

<b>A,B,C Hip</b>	50	52	54	56	58	60	62	64	66	68	"
------------------	----	----	----	----	----	----	----	----	----	----	---

**Width, lower edge**

<b>Dress A,B</b>	63½	65½	67½	69½	71½	73½	75½	77½	79½	81½	Ins.
------------------	-----	-----	-----	-----	-----	-----	-----	-----	-----	-----	------

<b>Dress C</b>	72	74	76	78	80	82	84	86	88	90	"
----------------	----	----	----	----	----	----	----	----	----	----	---

**Finished back length from base of neck**

<b>Dress A,B</b>	39¼	39½	39¾	40	40¼	40½	40¾	41	41¼	41½	Ins.
------------------	-----	-----	-----	----	-----	-----	-----	----	-----	-----	------

<b>Dress C</b>	46¼	46½	46¾	47	47¼	47½	47¾	48	48¼	48½	"
----------------	-----	-----	-----	----	-----	-----	-----	----	-----	-----	---

\*with nap \*\*without nap

Moins Facile

**ROBES EN TRICOT POUR FEMMES**

**Tissu Conseillés:** Seulement pour tricotés extensibles (35% en largeur) tels que Tricotés de coton, Interlock, Ponte, Tricot à côtes. Reportez-vous au taux d'élasticité. **Entoilage:** Tricot thermocollant.

**Mercerie:** **A:** 8 boutons de 2.5cm. **B:** 13 boutons de 2.5cm, 6.1m de passepoil de 6mm. **C:** 11 boutons de 2.5cm.

Tailles	20W	22W	24W	26W	28W	30W	32W	34W	36W	38W
Françaises	48	50	52	54	56	58	60	62	64	66
Européen	46	48	50	52	54	56	58	60	62	64

**MESURES DU CORPS: Choisissez la taille du patron basée sur les mesures du corps**

<b>Poitrine</b>	107	112	117	122	127	132	137	142	147	152	cm
-----------------	-----	-----	-----	-----	-----	-----	-----	-----	-----	-----	----

<b>Taille</b>	89	94	99	105	112	118	124	130	134	138	"
---------------	----	----	----	-----	-----	-----	-----	-----	-----	-----	---

**Hanches (23cm au-dessous de la taille)**

	112	117	122	127	132	137	142	147	152	157	cm
--	-----	-----	-----	-----	-----	-----	-----	-----	-----	-----	----

**Dos du cou à la taille**

	44	44	44.5	45	45	45.5	46	46	46.5	47	"
--	----	----	------	----	----	------	----	----	------	----	---

**Robe A**

150cm*	1.9	1.9	2.1	2.1	2.2	2.2	2.2	2.3	2.3	2.3	m
--------	-----	-----	-----	-----	-----	-----	-----	-----	-----	-----	---

**Entoilage A**

51cm	1.1	1.1	1.1	1.1	1.1	1.1	1.1	1.1	1.1	1.1	"
------	-----	-----	-----	-----	-----	-----	-----	-----	-----	-----	---

**Robe et ceinture B**

150cm*1.7	1.9	1.9	1.9	2.2	2.2	2.2	2.3	2.3	2.3	2.3	m
-----------	-----	-----	-----	-----	-----	-----	-----	-----	-----	-----	---

**Contraste B (Bandes de col, patte de boutonnage, bandes de poches et manches, ceinture)**

150cm*	1.1	1.3	1.3	1.3	1.3	1.3	1.4	1.4	1.4	1.4	m
--------	-----	-----	-----	-----	-----	-----	-----	-----	-----	-----	---

**Entoilage B**

51cm	1.6	1.6	1.6	1.6	1.7	1.7	1.7	1.7	1.7	1.8	"
------	-----	-----	-----	-----	-----	-----	-----	-----	-----	-----	---

**Robe C**

150cm*	2.3	2.3	2.6	2.6	2.6	2.6	2.7	2.7	2.7	2.9	m
--------	-----	-----	-----	-----	-----	-----	-----	-----	-----	-----	---

**Contraste C (Bandes de col, attes de boutonnage, bandes de poches et manches)**

150cm*	1.1	1.1	1.1	1.1	1.1	1.1	1.1	1.1	1.1	1.1	m
--------	-----	-----	-----	-----	-----	-----	-----	-----	-----	-----	---

**Entoilage C**

51cm	1.3	1.3	1.4	1.4	1.4	1.4	1.4	1.4	1.4	1.4	"
------	-----	-----	-----	-----	-----	-----	-----	-----	-----	-----	---

**MESURES DES VÊTEMENTS FINI (Motif et aisance de port compris)**

<b>A,B,C Poitrine</b>	105	110	116	121	126	131	136	141	146	151	cm
-----------------------	-----	-----	-----	-----	-----	-----	-----	-----	-----	-----	----

<b>A,B,C Taille</b>	99	104	109	114	119	124	130	135	140	145	"
---------------------	----	-----	-----	-----	-----	-----	-----	-----	-----	-----	---

<b>A,B,C Hanches</b>	127	132	137	142	147	152	157	163	168	173	"
----------------------	-----	-----	-----	-----	-----	-----	-----	-----	-----	-----	---

**Largeur à l'ourlet**

<b>Robe A,B</b>	161	166	171	177	182	187	192	197	202	207	cm
-----------------	-----	-----	-----	-----	-----	-----	-----	-----	-----	-----	----

<b>Robe C</b>	183	188	193	198	203	208	213	218	224	229	"
---------------	-----	-----	-----	-----	-----	-----	-----	-----	-----	-----	---

**Longueur finie – dos, votre nuque à l'ourlet**

<b>Robe A,B</b>	100	100	101	102	102	103	104	104	105	105	cm
-----------------	-----	-----	-----	-----	-----	-----	-----	-----	-----	-----	----

<b>Robe C</b>	117	118	119	119	120	121	121	122	123	123	"
---------------	-----	-----	-----	-----	-----	-----	-----	-----	-----	-----	---

\*avec sens \*\*sans sens



A



B



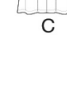
B



C



C



C

Use the 1 inch (2.54cm) box to ensure you are using rule at 100%

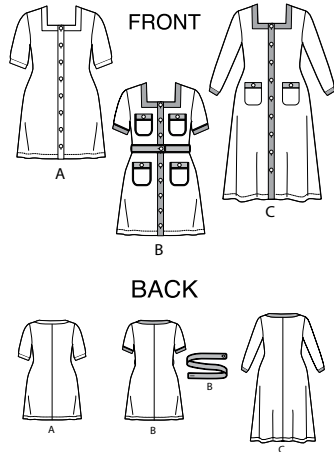
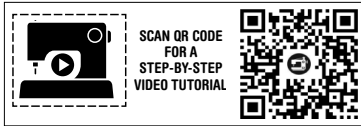
Utilisez la boîte de 2.54 cm pour vous assurer d'utiliser la règle à 100%.

Utilizar un cuadrado de 2.54 cm para asegurarse de estar usando la regla al 100%.

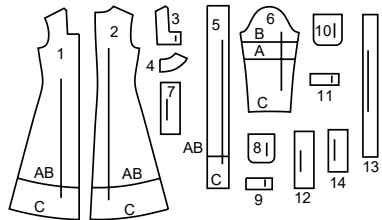
4" of crosswise folded knit must STRETCH from here  
10 cm de tricot pilé sur le travers doivent s'étire d'ici  
10 cm de tejido de punto doblado al través deben estirarse desde acá

To Here (35%)  
jusqu'ici (35%)  
hasta acá (35%)

When using the Pick-A-Knit® rule to measure your fabrics stretch capacity, rule must be viewed or printed at 100%.  
Quand vous utilisez la règle Pick-A-Knit® pour mesurer la capacité d'élasticité des tissus, la règle doit être visible ou imprimée à 100%.  
Al utilizar la regla Pick-A-Knit® para medir la capacidad de elasticidad de las telas, la regla debe estar visible o impresa al 100%.

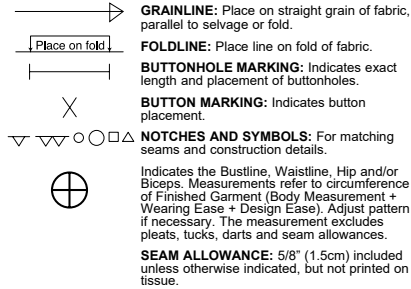


14 PATTERN PIECES

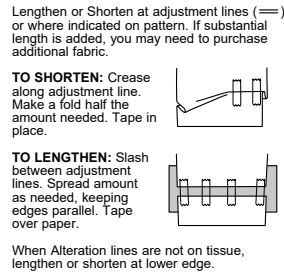


- 1 FRONT-A,B,C
- 2 BACK-A,B,C
- 3 FRONT NECK BAND-A,B,C
- 4 BACK NECK BAND-A,B,C
- 5 PLACKET-A,B,C
- 6 SLEEVES-A,B,C
- 7 SLEEVE BAND-A
- 8 UPPER POCKET-B
- 9 UPPER BAND-B
- 10 POCKET-B,C
- 11 POCKET BAND-B,C
- 12 SLEEVE BAND-B
- 13 BELT-B
- 14 SLEEVE BAND-C

PATTERN MARKINGS



ADJUST IF NECESSARY



CUTTING AND MARKING

**SHRINK FABRIC** if not labeled pre-shrunk. Press.

**CIRCLE LAYOUT** for View, Size, Fabric Width.

Use **WITH NAP** layout for fabrics with one-way designs, nap, pile or surface shading. Because most knits have surface shading, a with nap layout is used.

For **DOUBLE THICKNESS (WITH FOLD)** - fold fabric with right sides together.

**\* DOUBLE THICKNESS (WITHOUT FOLD)** - For fabrics with nap, fold fabric crosswise, right sides together. Mark as shown. Cut along crosswise fold of fabric (A). Turn upper layer 180° so arrows go in same direction and place over lower layer, right sides together (B).

For **SINGLE THICKNESS** - place fabric right side up. (For Fur Pile fabrics, place pile side down.)

★ Cut other pieces first, allowing enough fabric to cut this piece. Open fabric. For "Cut 1" pieces, cut piece once on single layer of fabric with piece face up on right side of fabric.

Pattern may have cutting lines for several sizes. Select the proper cutting line or pattern pieces for your size.

Before **CUTTING** place all pieces on fabric according to layout. Pin. (Layouts show approximate position of pattern pieces; position may vary according to your pattern size.) Cut **ACCURATELY**, cutting notches outward.

Before removing pattern, **TRANSFER MARKINGS** and lines of construction to Wrong Side of fabric, using the Pin and Chalk Pencil method or Tracing Paper and Dressmaker Wheel. Markings needed on right side of fabric should be thread traced.

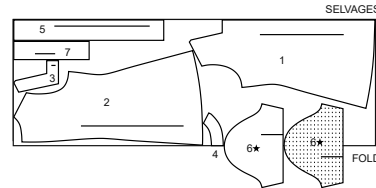
**NOTE:** Broken-line boxes (a|b|c) in layouts represent pieces cut by measurements provided.

CUTTING LAYOUTS

DRESS A

use pieces: 1 2 3 4 5 6 7

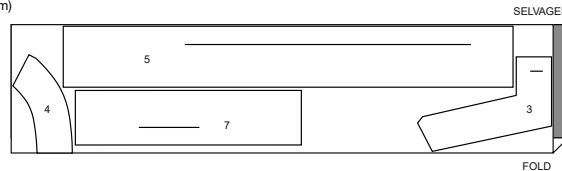
60" (150 cm)  
with nap  
all sizes



INTERFACING A (PLACKET, FRONT BAND)

use pieces: 3 4 5 7

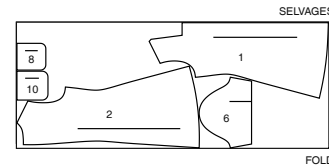
20" (51 cm)  
all sizes



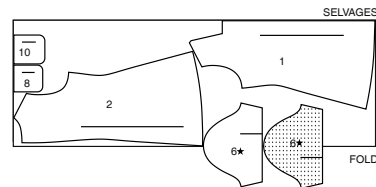
DRESS AND BELT B

use pieces: 1 2 6 8 10

60" (150 cm)  
with nap  
sizes 20W 22W 24W 26W



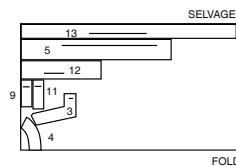
60" (150 cm)  
with nap  
sizes 28W 30W 32W 34W 36W 38W



CONTRAST B (BANDS AND BELT)

use pieces: 3 4 5 9 11 12 13

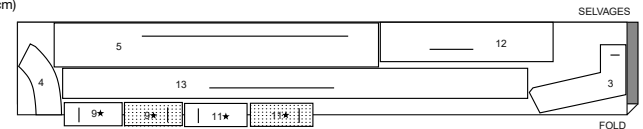
60" (150 cm)  
with nap  
all sizes



INTERFACING B (PLACKET, FRONT BANDS)

use pieces: 3 4 5 9 11 12 13

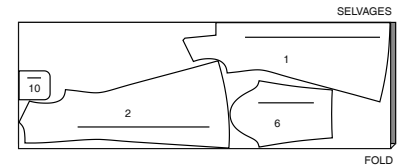
20" (51 cm)  
all sizes



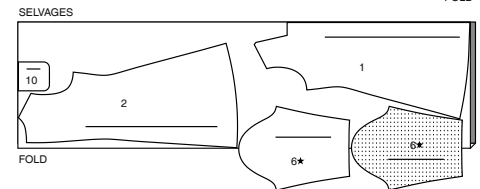
DRESS C

use pieces: 1 2 6 10

60" (150 cm)  
with nap  
sizes 20W 22W



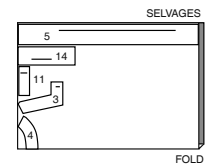
60" (150 cm)  
with nap  
sizes 24W 26W 28W 30W  
32W 34W 36W 38W



CONTRAST C (BANDS)

use pieces: 3 4 5 11 14

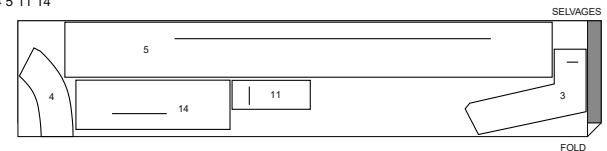
60" (150 cm)  
with nap  
all sizes



INTERFACING C (PLACKET, FRONT BANDS)

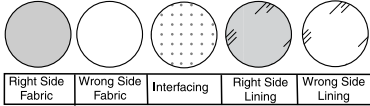
use pieces: 3 4 5 11 14

20" (51 cm)  
all sizes



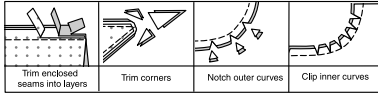
**SEWING INFORMATION**

**FABRIC KEY**



**SEAM ALLOWANCES**

Use 5/8" (1.5cm) seam allowances unless otherwise indicated.



**PIN AND FIT**

Pin or baste seams, **RIGHT SIDE TOGETHER**, matching notches. Fit garment before stitching major seams.

**PRESS**

Press seam allowances flat; then open unless otherwise stated. Clip where necessary so they lie flat.

**GLOSSARY**

Sewing methods in **BOLD TYPE** have Sewing Tutorial Video available. Scan QR CODE to watch videos:

**SLEEVE** – see **Armholes/Sleeves**: “sewing a set in sleeve” video

**EASE/GATHER** - see **Gathering**: “sewing two row gathers” video

**EDGESTITCH** - see **Machine Stitches**: “how to edgestitch” video

**REINFORCE** - see **Machine Stitches**: “how to reinforce” video

**STAYSTITCH** - see **Machine Stitches**: “how to do stay-stitching” video

**STITCH IN THE DITCH** - see **Machine Stitches**: “how to stitch in the ditch” video

**TOPSTITCH** - see **Machine Stitches**: “how to topstitch” video

**UNDERSTITCH** - see **Machine Stitches**: “how to understitch” video

**SLIPSTITCH** - Slide needle through a folded edge, then pick up a thread of underneath fabric.

**SEWING TUTORIALS**



Build your skills viewing short, easy-to-follow videos at [simplicity.com/sewingtutorials](http://simplicity.com/sewingtutorials)

**PATTERN PIECES WILL BE IDENTIFIED BY NUMBERS THE FIRST TIME THEY ARE USED.**

**STITCH SEAMS WITH RIGHT SIDES TOGETHER UNLESS OTHERWISE STATED.**

**NOTE:** Under each sub-heading, the first view will be illustrated, unless otherwise illustrated.

**DRESS A, B, C**

**FOR KNITS**

Use a ball point or stretch needle.

Decrease pressure on presser foot for heavy sweater knits; increase pressure for lingerie knits.

Stretch knits need seams that are supple enough to “give” with the fabric. You can sew them with straight stitches (stretching the fabric slightly as you sew), narrow zigzag stitches or one of the stretch stitches built into many conventional machines, or on your serger.

Some knits require very little or no pressing while sewing. Use the appropriate temperature setting. Press lightly or use steam.

Use a twin sewing machine needle for a double stitched hem.

**FOR OVERLOCK/SERGER**

The Serger can be used alone or as a supplement to your conventional sewing machine.

Overlock sewing machines stitch, trim and finish all in one operation.

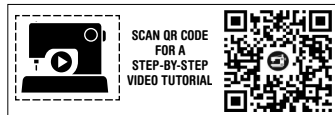
Therefore, it is **VERY** important to Check Fit before stitching seams.

Using matching color thread, baste seams and try garment on. If no adjustments are needed, overlock seams along basting.

The three thread overlock is ideal for major seams such as shoulder, side, underarm and sleeve seams.

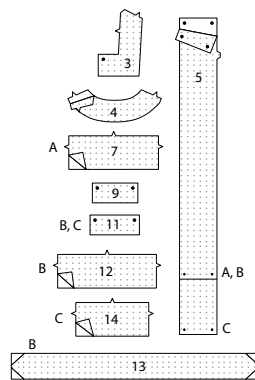
For stress areas such as crotch seams and armholes, the four thread overlock/safety stitch is best...OR, use a three thread overlock, and stitch along seam with a conventional machine to reinforce.

The two or three thread overlock stitch is a perfect finish for edges of facings, hems and seam allowances.



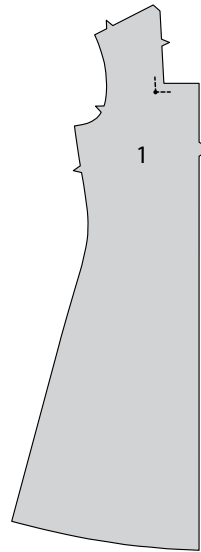
**INTERFACING**

1. Trim corners of **INTERFACING**, as shown. Fuse interfacing to wrong side of each matching **FABRIC** section, following manufacturer’s instructions.



**FRONT AND BACK**

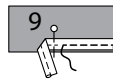
2. **REINFORCE** inward corner of **FRONT** (1) along stitching line, pivoting at corner.



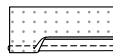
**POCKETS B**

**NOTE:** When stitching seams with piping trim, use a zipper foot.

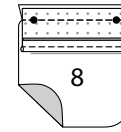
3. With right sides together, pin purchased piping trim to unmarked edge of **UPPER BAND** (9), placing stitching or ridge on piping just inside the 3/8" (1cm) seamline. Baste.



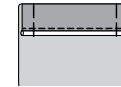
4. Press under 3/8" (1cm) on long unmarked edge of upper band, turning piping out.



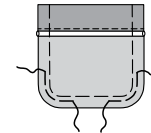
5. Pin right side of band to wrong side of pocket, matching dots. Stitch upper edge; trim seam.



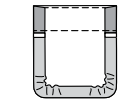
6. Turn band to outside along seam, having raw edges even; press. Baste raw edges. Stitch band to pocket close to pressed edge, through all layers.



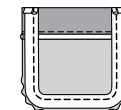
7. Stitch along seam line on raw edges. Stitch curved edges of pocket 3/8" (1cm) from raw edge, using long machine stitches, as shown.



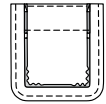
8. Turn in seam allowances on raw edges; pull threads to ease in fullness on curves; press.



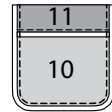
9. Open out raw edges. With right sides together, pin purchased piping trim to sides and lower edge of pocket, placing stitching or ridge on piping just inside the seamline, turning under ends of piping even with upper edge. Stitch.



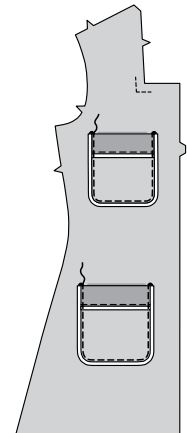
10. Turn in pocket raw edges to inside again, turning piping out.



11. Prepare and stitch/apply **POCKET** (10) and **POCKET BAND** (11) in the same manner as described for upper pocket and upper band.

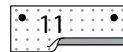


12. Pin upper pocket and pocket to dress front, matching large dots. **EDGESTITCH** sides and lower edge.

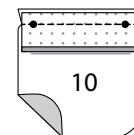


**POCKETS C**

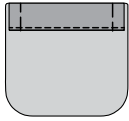
13. Press under 3/8" (1cm) on long unmarked edge of **FRONT BAND** (11).



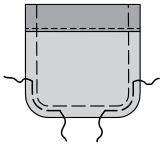
14. Pin right side of pocket band to wrong side of **POCKET** (10), matching dots. Stitch upper edge; trim seam.



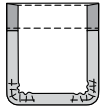
15. Turn band to outside along seam, having raw edges even; press. Baste raw edges. Stitch band to pocket close to pressed edge, through all layers.



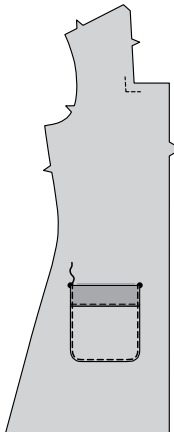
16. Stitch along seam line on raw edges. Stitch curved edges of pocket 3/8" (1cm) from raw edge, using long machine stitches, as shown.



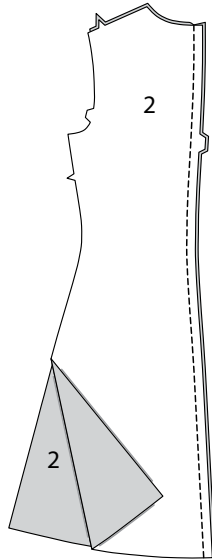
17. Turn in seam allowances on raw edges; pull threads to ease in fullness on curves; press.



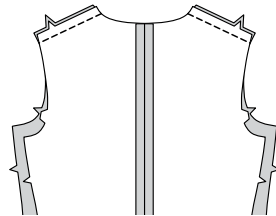
18. Pin pocket to front, matching dots. **EDGE**STITCH sides and lower edge.



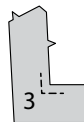
**BACK**  
19. With right sides together, pin **BACK** (2) sections, matching notches. Stitch center seam.



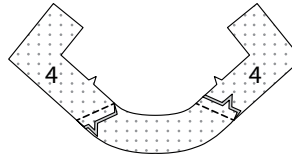
20. Stitch back to front at shoulders.



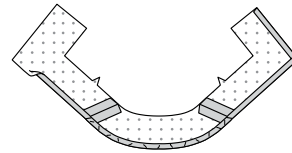
**NECK BAND**  
21. **REINFORCE** FRONT NECK BAND (3) along stitching line, pivoting at corner.



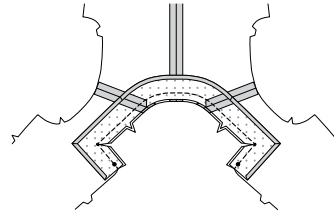
22. Pin **BACK NECK BAND** (4) to each front neck band at shoulders; stitch.



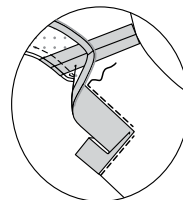
23. Press under 3/8" (1cm) on lower edge of facing, easing in fullness where necessary, folding in fullness at corners.



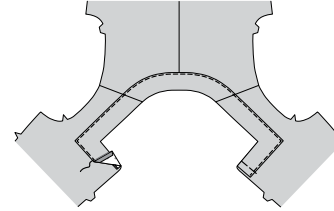
24. Pin right side of band to wrong side of dress at neck edge, matching center backs, shoulder seams and dots. Stitch neck edge, pivoting at corners. Clip diagonally to corners; trim seams.



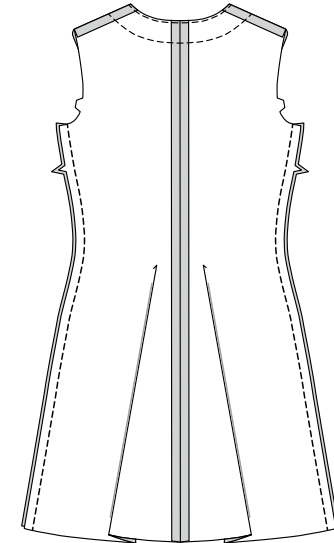
25. **UNDERSTITCH** garment as far as possible.



26. Turn band to outside along seam, having raw edges even; press. Baste along front edges. Pin pressed edge of band to front. Stitch close to pressed edge, through all layers.

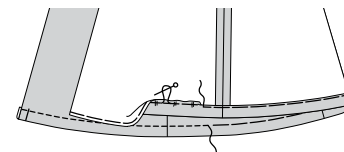


27. Stitch dress back to dress front at sides.



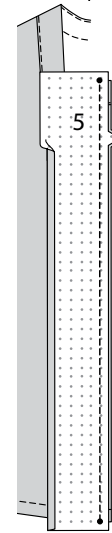
**HEM**

28. Stitch 1/4" (6mm) from lower edge of dress, using long machine stitches, as shown. Turn up a 1-1/4" (3.2cm) hem at lower edge of dress, turning under 1/4" (6mm) on raw edge. Pull thread to ease in fullness. Baste hem in place close to upper edge; press. **TOPSTITCH** hem along upper basting. Baste front edges together.

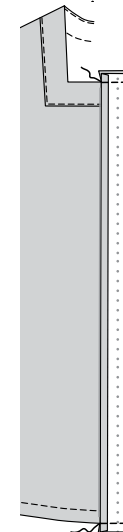


**FRONT BAND**

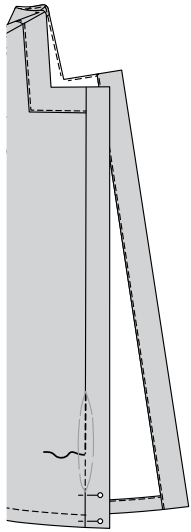
29. Press under 5/8" (1.5cm) on long unnotched edge of **FRONT BAND** (5). Trim pressed edge to 3/8" (1cm). With right sides together, pin front band to front, matching notches and dots to finished edges. Stitch front edges; trim seam. Press seams toward band, continuing to press under 5/8" (1.5cm) on band to outer edges.



30. Fold band on foldline, right sides together. Stitch across upper and lower edges. Trim seams.

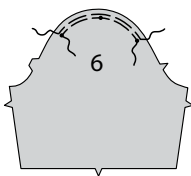


**31.** Turn band right side out, folding on foldline, having pressed edge just over band seam. Press. Working on the RIGHT side of the fabric, "stitch-in-the-ditch", (in the groove where the band joins the fabric), being sure to catch in the underneath layer of band in the stitching.



**SLEEVE**

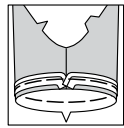
**32. EASESTITCH** cap of SLEEVE (6) between outer dots.



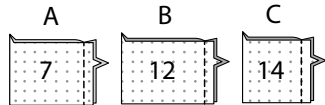
**33.** Stitch sleeve seam.



**34. For View B:** With right sides together, pin purchased piping trim to lower edge of sleeve, placing stitching or ridge on piping just inside the seamline and tapering ends at seam. Baste.



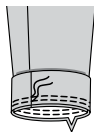
**35.** With right sides together, stitch ends of SLEEVE BAND (7), (12) or (14), matching notches.



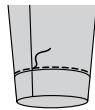
**36.** Fold band along foldline, wrong sides together, matching notches and seams; press. Pin raw edges.



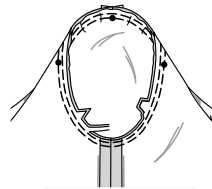
**37.** With right sides together, pin band to lower edge of sleeve, matching notches and seams. Stitch. Stitch again 1/4" (6mm) away in seam allowances. Trim close to second stitching. Press seams toward sleeve, turning band out.



**38.** On outside, stitch sleeve close to seam.



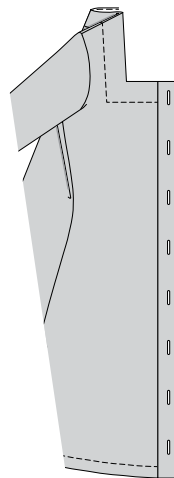
**39.** With right sides together, pin SLEEVE into armhole edge with center small dot at shoulder seam, matching underarm seams, notches and remaining small dots. Adjust ease. Baste. Stitch. Stitch again 1/4" (6mm) away in seam allowances. Trim close to second stitching. Press seam allowances flat. Turn seam allowances toward sleeve.



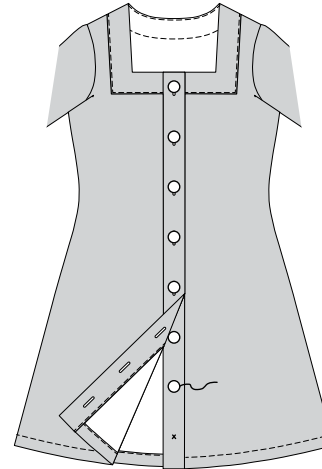
**FINISHING**

**BUTTONHOLES AND BUTTONS**

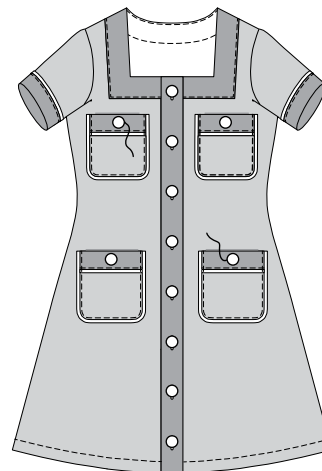
**40.** Make buttonholes in right band at markings.



**41.** Lap right front over left, matching centers. Using buttonholes as guides, make button markings on left band. Sew buttons at markings.

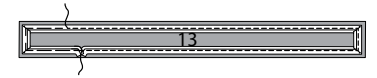


**42. For Views B, C:** Sew one button to each band on each pocket at small dot, keeping dress free.



**BELT B**

**43.** With right sides together, pin purchased piping trim to outer edges of one BELT (13) section, placing stitching or ridge on piping just inside the seamline and tapering ends at seam. Baste. Stitch. (Remaining belt section will be used as facing.)



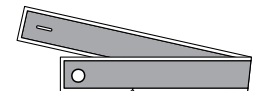
**44.** With right sides together, pin belt FACING (13) to belt. Stitch, leaving an opening for turning; trim seam.



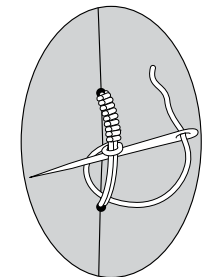
**45.** Turn right side out, turning piping out. SLIPSTITCH opening edges together.



**46.** Make buttonhole in belt at marking. On outside, sew remaining button to belt at marking.



**47.** Make thread loop at sides between small dots, large enough for belt to pass through.





# Congrats!

You've completed your sewing adventure

---

**SHARE  
YOUR** LOOK



Post your pattern and tag us  
[@simplicity\\_creative\\_group](#) and [#simplicitypatterns](#)  
for a chance to be featured on our social media.

Look for more PDF patterns at [simplicity.com](https://www.simplicity.com)

Have a question or need help with your sewing project call us at  
1-800-782-0323

**McCall's**  
by **design**<sub>group</sub>