

McCall's

M8433

VINTAGE 90'S



Designed and printed in USA

Average

MISSES' JACKET

Suggested Fabrics: Brocade, Challis, Corduroy, Cotton, Cotton Blends, Denim, Gabardine, Medium weight Linen, Synthetic Suede, Velveteen, Wool and Wool Blends, Wool Crepe. **Lining (Opt.):** Lining Fabrics.

Interfacing: Lightweight Sew-in.

Notions: A,B,C: One 1" (2.5cm) button, 3/8" (2cm) thick covered "raglan" style shoulder pads. **Also for A:** Embroidery floss or yarn (optional).

Sizes	8	10	12	14	16	18	20	22	24
European	34	36	38	40	42	44	46	48	50

BODY MEASUREMENTS: Select pattern size based on body measurements

Bust	31½	32½	34	36	38	40	42	44	46	Ins.
Waist	24	25	26½	28	30	32	34	37	39	"
Hip-9" below waist	33½	34½	36	38	40	42	44	46	48	"
Back-neck to waist	15¾	16	16¼	16½	16¾	17	17¼	17½	17¾	"

Lining A,B,C (Optional)

	45**	1¾	1¾	1¾	2¼	2¼	2¼	2½	2½	Yds.
Jacket A	45**	2¾	2¾	2¾	3¾	3¾	4	4	4½	Yds.
	60**	2¼	2¼	2¼	2½	2½	2¾	2¾	2¾	"

Interfacing A,B

	20"	- 1¼ yds.								
Jacket B	45**	2¼	2¼	2¼	2¼	2¼	2¼	2¼	2¼	Yds.
	60**	1¾	1¾	1¾	1¾	1¾	1¾	1¾	1¾	"

Contrast (Front and Back Facing, Sleeves)

	45**	1½	1½	1½	1½	1½	1½	1½	1½	Yds.
	60**	1¾	1¾	1¾	1¾	1¾	1¾	1¾	1¾	"
Jacket C	45**	2½	3	3	3¾	3¾	3¾	3¾	3¾	Yds.
	60**	2¼	2½	2½	2½	2½	2¾	2¾	2¾	"

Interfacing C

	20"	- 2¼ yds.								
--	-----	-----------	--	--	--	--	--	--	--	--

FINISHED GARMENT MEASUREMENTS (Includes Design and Wearing Ease)

A,B,C Bust	43	44	45½	47½	49½	51½	53½	55½	57½	Ins.
A,B,C Waist	43	44	45½	47½	49½	51½	53½	55½	57½	"
A,B,C Hip	43½	44½	46	48	50	52	54	56	58	"
Width, lower edge										
Jacket A,B,C	43½	44½	46	48	50	52	54	56	58	Ins.
Finished back length from base of neck										
Jacket A,B,C	31¾	32	32½	32½	32¾	33	33¼	33½	33¾	Ins.

*with nap **without nap

Moins Facile

VESTE POUR JEUNES FEMMES

Tissus Conseillés: Brocade, Challis, Velours côtelé, Coton, Cotonnades, Denim, Gabardine, Toile de lin de poids moyen, Simili daim, Velours de coton, Laine et Mélanges de laine, Crêpe de laine. **Doublure (facult.):** Tissus à doublure. **Entoilage:** à coudre léger.

Merci: A,B,C: 1 bouton de 2.5cm, épaulettes de style "raglan" recouvertes de 2cm d'épaisseur. **Aussi pour A:** fil à broder ou laine (facultatif).

Tailles	8	10	12	14	16	18	20	22	24
Françaises	36	38	40	42	44	46	48	50	52
Européenne	34	36	38	40	42	44	46	48	50

MESURES DU CORPS: Choisissez la taille du patron basée sur les mesures du corps

Poitrine	80	83	87	92	97	102	107	112	117	cm
Taille	61	64	67	71	76	81	87	94	99	"
Hanches (23cm au-dessous de la taille)										
	85	88	92	97	102	107	112	117	122	cm
Dos du cou à la taille	40	40.5	41.5	42	42.5	43	44	44.5	45	"

Doublure A,B,C (facultatif)

	115cm**	1.6	1.6	1.6	2.0	2.1	2.1	2.1	2.4	2.4	m
Veste A	115cm*	2.6	2.6	2.6	3.4	3.5	3.5	3.6	3.7	3.7	m
	150cm*	2.0	2.0	2.1	2.2	2.3	2.4	2.5	2.5	2.7	"

Entoilage A,B

	51cm	- 1.2m									
Veste B	115cm*	1.9	1.9	1.9	2.1	2.1	2.1	2.2	2.2	2.2	m
	150cm*	1.3	1.3	1.3	1.3	1.6	1.7	1.7	1.9	1.9	"

Contraste (Parementure du devant et dos, Manches)

	115cm*	1.4	1.4	1.4	1.4	1.5	1.5	1.5	1.5	1.5	m
	150cm*	1.1	1.1	1.1	1.1	1.1	1.1	1.2	1.2	1.3	"
Veste C	115cm*	2.7	2.7	2.7	3.0	3.2	3.2	3.2	3.3	3.3	m
	150cm*	1.9	1.9	2.0	2.0	2.3	2.4	2.5	2.6	2.6	"

Entoilage C

	51cm	- 2.0m								
--	------	--------	--	--	--	--	--	--	--	--

MESURES DES VÊTEMENTS FINI (Motif et aisance de port compris)

A,B,C Poitrine	109	112	116	121	126	131	136	141	146	cm
A,B,C Taille	109	112	116	121	126	131	136	141	146	"
A,B,C Hanches	110	113	117	122	127	132	137	142	147	"
Largeur à l'ourlet										
Veste A,B,C	110	113	117	122	127	132	137	142	147	cm
Longueur finie - dos, votre nuque à l'ourlet										
Veste A,B,C	81	81	82	83	83	84	84	85	86	cm

*avec sens **sans sens



A B

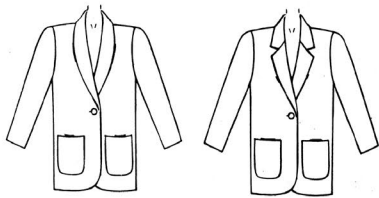


C

8083

McCALL'S®

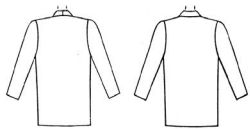
FRONT



A - B

C

BACK

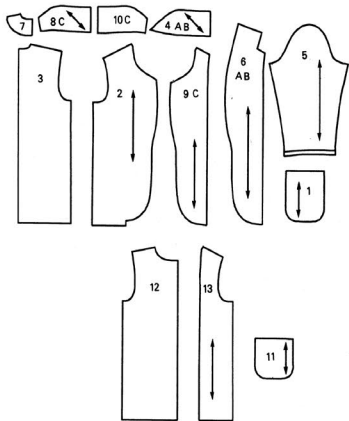


A-B

C

PATTERN PIECES

JACKET A-B-C



- 1. POCKET
- 2. FRONT
- 3. BACK
- 4. UNDER COLLAR A-B
- 5. SLEEVE
- 6. FRONT FACING A-B
- 7. BACK FACING
- 8. UNDER COLLAR C
- 9. FRONT FACING C
- 10. UPPER COLLAR C
- 11. POCKET LINING
- 12. BACK LINING
- 13. FRONT LINING

INTERFACING GUIDE

Use this handy reference chart as a guide when selecting your interfacing. Always test for compatibility by fusing or sewing a piece of interfacing to your fabric before applying it to your garment.

	Fabrics	Interfacing
	(F) = Fusible (NF) = Non-fusible	
Separates and Dresses (sheer shaping)	voile, chiffon, lawn, gauze, batiste, leno, georgette, dimity, crepe de chine, charmeuse	* Sheer Blenders #907 (F) * Sheer Fuse (F) * Sheer Sew-In (NF) * Sheerweight #905 (NF) * Sheerweight #906 (F) * Shape Flex Woven (NF)
	(soft shaping)	* Add Shape Featherlite (NF) * Chalis, Jersey, single knits, tricot, crepe,
(crisp shaping)	shirtings, gingham, poplin, chambray, seersucker, cotton, broadcloth, cord, oxford cloth, pique, lightweight linen, cotton blends, cre, lightweight denim	* Featherweight #911 All-Bias (F) * Shape-Flex (F) * Shapewell #70 (F) * Shapewell #70 (NF) * Sta-Shape Durable Press (NF) * Sure Fuse (F) * Veriform Durable Press (NF) * Shirt Fuse (F)
Coats, Dresses, Jackets and Suits (soft shaping)	wool, linen, denim, poplin, corduroy, tweeds, flannels, wool blends, gabardine, mohair, synthetic leather and suede	* Easy Shaper Suitweight (F) * Sof-Shape #880 All-Bias (F) * Soft Fuse (F) * Suit Shape (F) * Tailor's Touch (F)
	(crisp shaping)	* Hair Canvas #77 (NF) * Midweight #930 All-Bias (NF) * Midweight #931TD (F) * Pel-Aire Suitweight #881 (F) * Sewers Choice (NF)
Knits Only	double knits, cotton or blended knits, single knits, lightweight sweater knits, terry, jersey, lightweight velour, sweatshirt fleece	* Easy-Knit (F) * Easy Shaper Lightweight (F) * Featherweight #910 All Bias (NF) * Interon Bias Featherweight (NF) * Sof-Shape #880 All-Bias (F) * Soft Fuse (F) * Stretch-Ease (F)
		* Pellon * Stacy * These products are registered trademarks of the Pellon Corporation. * These products are registered trademarks of Stacy Fabric Corporation For FUSIBLE interfacing, follow manufacturer's directions.

PATTERN MARKINGS

- GRAINLINE: Place on straight grain of fabric, an even distance from selvage or fold.
- FOLD LINE: Place on fold of fabric.
- CUTTING LINE: For cutting.
- SEAM LINE: For stitching.
- SEAM ALLOWANCE: Distance between cutting and seam lines, usually 5/8" (1.5cm). On multi-sized patterns seam allowance is included, but not printed on tissue.
- NOTCHES AND CIRCLES: For matching pattern pieces.

FINISHED GARMENT MEASUREMENT SYMBOL: The finished garment measurements at bust and/or hip are printed on your Front pattern pieces. The measurement includes Body Measurement + Wearing Ease + Design Ease. The measurement excludes pleats, tucks, darts and seam allowances. Measurements are also printed on the back of the pattern envelope when space is available.

← 46" (117cm) →

ADJUST IF NECESSARY

A pattern is made to fit body measurements, with extra ease for comfort and style. Adjust pieces before placing on fabric. Adjust back waist, sleeve and finished garment lengths using McCALL'S Easy-Rule Guide.

TO SHORTEN: Crease on Easy-Rule Guide. Fold necessary amount. Tape in place.



TO LENGTHEN: Cut on dotted lines of Easy-Rule Guide. Spread necessary amount. Tape over paper.

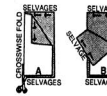


When Easy-Rule Guide is not on tissue, lengthen or shorten at lower edge.

CUTTING AND MARKING

SHRINK FABRIC not labeled pre-shrunk. Press. **CIRCLE LAYOUT** for View, Size, Fabric Width. Use **WITH NAP** layout for fabrics with one-way designs, nap, pile or surface shading. Because most knits have surface shading, a with nap layout is used. For **DOUBLE THICKNESS (WITH FOLD)** - fold fabric with Right Sides Together.

*** DOUBLE THICKNESS (WITHOUT FOLD)** - For fabric with nap, fold fabric crosswise, **RIGHT SIDES TOGETHER**. Mark as shown. Cut along crosswise fold of fabric (A). Turn upper layer 180° so arrows go in same direction and place over lower layer, **RIGHT SIDES TOGETHER (B)**.



For **SINGLE THICKNESS** - place fabric Right Side Up. Before **CUTTING** place all pieces on fabric according to layout. Overlap margins. Pin. Cut **ACCURATELY** through fabric and pattern on cutting line. Cut notches outward. **BEFORE REMOVING PATTERN**, transfer markings to Wrong Side of fabric. Two ways which may be used quickly are the Pin and Chalk Pencil method or Tracing Paper and Dressmaker Wheel.

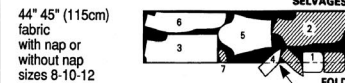
CUTTING LAYOUTS

Black area denotes fabric. Pattern pieces to be placed with printed side up. Pattern pieces to be placed with printed side down.

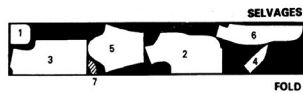
NOTE: Pattern pieces may interlock more closely for smaller sizes.

* The finished garment measurements at bust and/or hip printed on your pattern tissue = Body Measurement + Wearing Ease + Design Ease.

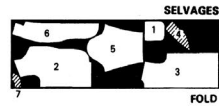
A JACKET
use pieces 1 thru 7
(piece 6 is also cut of interfacing)



sizes 14-16-18-20-22-24

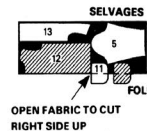


58" 60" (150cm)
fabric with nap
all sizes



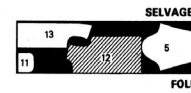
Lining
use pieces 5, 11, 12, 13

44" 45" (115cm)
fabric without nap
sizes 8-10-12



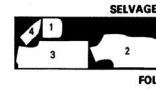
LINING-continued

sizes 14-16-18-20-22-24



B JACKET
use pieces 1, 2, 3, 4

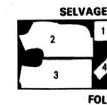
44" 45" (115cm)
fabric with nap or without nap
sizes 8-10-12



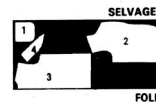
sizes 14-16-18-20-22-24



58" 60" (150cm)
fabric with nap
sizes 8-10-12-14



sizes 16-18-20-22-24

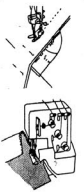


SEWING INFORMATION

PIN AND FIT
Pin or baste seams, **RIGHT SIDES TOGETHER**, matching notches. Fit garment before stitching major seams.

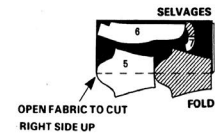
WITH A CONVENTIONAL MACHINE
STITCH using a 5/8" (1.5cm) seam allowance unless otherwise specified. Use guide line marking on throat plate of machine for accurate seam allowance. **PRESS** seams open unless otherwise stated. Clip if necessary to press seams flat.

WITH AN OVERLOCK (SERGER) MACHINE
SERGE cutting away the excess seam allowance (5/8" [1.5cm] unless otherwise specified). Press seams to one side. **OVEREDGE** to finish a raw edge, without cutting away fabric.

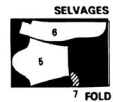


Contrast (Front Facings, Back Facing and Sleeves)
use pieces 5, 6, 7
(piece 6 is also cut of interfacing)

44" 45" (115cm)
fabric with nap or without nap
all sizes

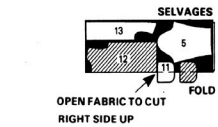


58" 60" (150cm)
fabric with nap
all sizes

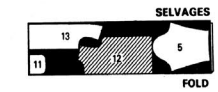


Lining
use pieces 5, 11, 12, 13

44" 45" (115cm)
fabric without nap
sizes 8-10-12



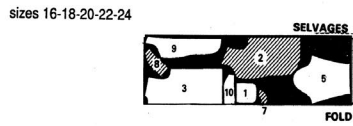
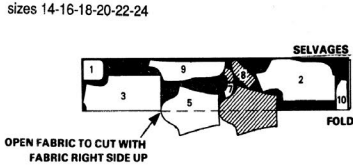
sizes 14-16-18-20-22-24



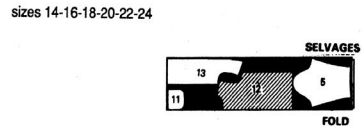
8083 - PAGE 2

CUTTING LAYOUTS-continued

C JACKET
use pieces 1, 2, 3, 5, 7 thru 10



Lining
use pieces 5, 11, 12, 13



Interfacing
use pieces 8, 9

21" thru 25" (53cm thru 64cm) all sizes



SEWING DIRECTIONS
JACKET A OR B

1. POCKETS

FOR UN-LINED JACKET

Finish upper edge of each POCKET (1) with a zigzag stitch or turn under 1/4" (6mm) and edge-stitch with a conventional machine or overedge using an overlock machine (serger), disregarding notches.



Turn upper edge of pocket to OUTSIDE on hemline.

Starting at hem fold, stitch around raw edge 5/8" (1.5cm) from edge.



To ease in fullness on curve, machine-baste 1/4" (6mm) from raw edge.

Cut upper corners diagonally.

Turn hem to INSIDE. Press under seam allowance below hem on line of stitching, pulling up basting to ease in fullness on curves.



Cut seam allowances to 1/4" (6mm).

Pin pockets to positions on each FRONT (2). Stitch close to sides and lower edge of pockets.

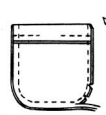


FOR LINED JACKET

Stitch POCKET LINING (11) to POCKET (1) at upper edge, RIGHT SIDES TOGETHER, matching notches, leaving an opening for turning. Press seam allowances toward lining.



Fold pocket on hemline RIGHT SIDES TOGETHER. Pin. (Note: Lining is slightly smaller than pocket.)



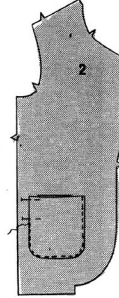
Stitch side and lower edges.

Cut corners diagonally. Cut seam allowances to 1/4" (6mm).

Turn pocket RIGHT SIDE OUT. Press. Slipstitch opening.



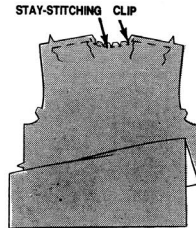
Pin pockets to positions on each FRONT (2). Stitch close to sides and lower edge of pockets.



2. SEAMS AND UNDER COLLAR

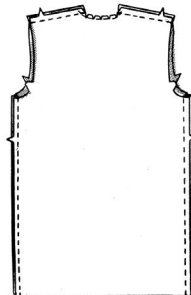
To ease shoulder edges of BACK (3), machine-baste 5/8" (1.5cm) from raw edge between notch and neck seam line.

To stay-stitch neck edge of back, machine-stitch 1/2" (1.3cm) from raw edge. Clip to stitching.



Pin back to fronts at shoulders. Pull up bobbin threads and adjust ease to fit. Baste. Stitch.

Stitch back to fronts at sides.

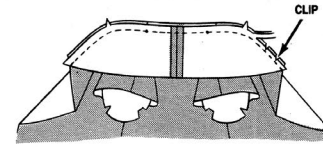


Stitch center back seam of UNDER COLLAR (4).



Pin under collar to neck edge of garment, RIGHT SIDES TOGETHER, matching notches, center backs and LARGE circles to shoulder seams. Baste, clipping neck edge of garment as necessary. Stitch.

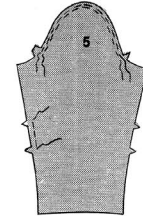
Cut seam allowances to 3/8" (1cm). Clip curves.



3. SLEEVES

To ease SLEEVE (5) cap, machine-baste 5/8" and 1/2" (1.5cm and 1.3cm) from raw edge between notches.

To ease back edge of sleeve machine-baste 5/8" (1.5cm) from raw edge between notches.



Pin seam in sleeve. Pull up bobbin thread and adjust ease to fit. Baste. Stitch.



Turn up a 1 1/2" (4.2cm) hem on lower edge of sleeve. Press. Open out hem. Cut seam allowances within hem to 1/4" (6mm).

For Un-Lined Jacket, finish raw edge same as upper edge of pockets.

Replace hem and hand-sew in place. Press.



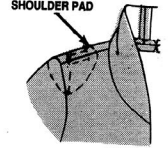
With RIGHT SIDES TOGETHER, pin sleeve into armhole, matching notches, underarm seams, small circles and LARGE circles to shoulder seam. Pull up bobbin threads to ease in fullness. To achieve a better looking cap, keep ease away from top of sleeve 1/2" (1.3cm) each side of LARGE circle. Hand-baste, adjusting ease evenly. Stitch.

Stitch again 3/8" (1cm) from raw edge below notches. Cut seam allowances close to second stitching.

Turn seam allowances toward sleeve.



Try on garment. Slip shoulder pads inside. Adjust shoulder pads to proper positions. (Square on pattern indicates where the normal shoulder ends.) Pin in place from the OUTSIDE.



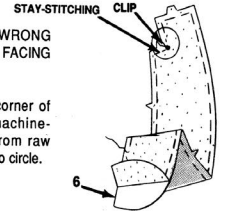
On INSIDE, tack shoulder pads in place as illustrated.



4. FACING AND UPPER COLLAR

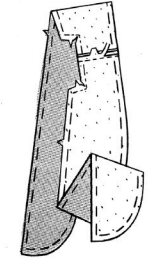
Baste interfacing to WRONG SIDE of each FRONT FACING (6).

To reinforce inward corner of each front facing, machine-stitch 5/8" (1.5cm) from raw edge thru circles. Clip to circle.

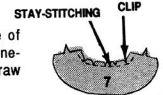


Stitch center back seam of upper collar which is in one with front facing.

Cut interfacing close to stitching.

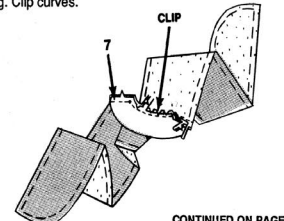


To stay-stitch neck edge of BACK FACING (7), machine-stitch 1/2" (1.3cm) from raw edge. Clip to stitching.



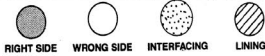
Pin BACK FACING (7) to front facings at shoulders and neck edge, matching notches, center backs and circles. Baste. Stitch, pivoting at circles.

Cut seam allowances to 3/8" (1cm). Cut interfacing close to stitching. Clip curves.



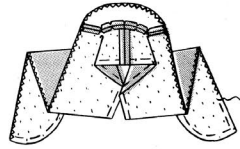
CONTINUED ON PAGE THREE

FABRIC KEY



8083 - PAGE 3

For Un-Lined Jacket, finish **INNER** edge of facings same as upper edge of pockets, disregarding notches.

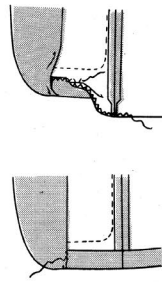


Open out hem. Cut seam allowances within hem to 1/4" (6mm).

Finish raw edge same as upper edge of pockets.

Replace hem and hand-sew in place. Press.

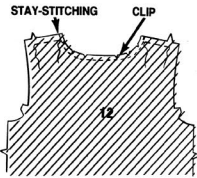
Slipstitch inner edge of facing to hem.



6. OPTIONAL LINING

Ease-stitch shoulder edges of **BACK (LINING)** (12) same as for back.

To stay-stitch neck edge of back lining, machine-stitch 1/2" (1.3cm) from raw edge. Clip to stitching.

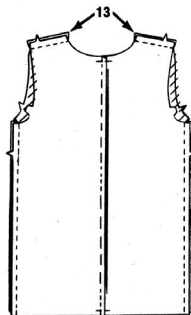
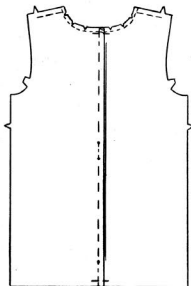


To make pleat in back lining, fold in half, **RIGHT SIDES TOGETHER**. Baste along pleat line. Stitch along dotted lines from upper and lower edges to circles and between circles.

Press pleat to one side. Baste across upper and lower edge of pleats.

Pin each **FRONT LINING** (13) to back at shoulders. Pull up bobbin threads and adjust ease to fit. Baste. Stitch.

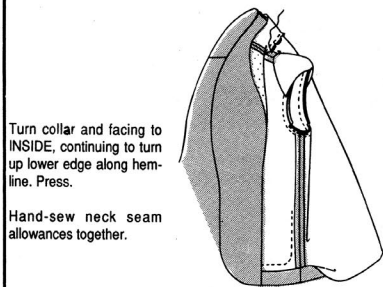
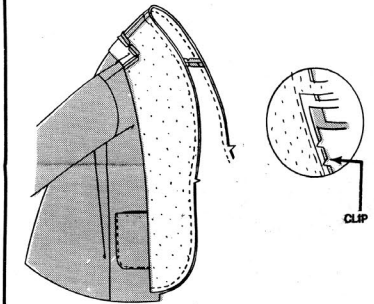
Stitch back to fronts at sides.



5. ATTACHING FACING - FOR UN-LINED JACKET

Pin upper collar and facing to under collar and garment, **RIGHT SIDES TOGETHER**, matching notches, shoulder seams and front edges. Stitch, easing front facing to fit between notch and center back.

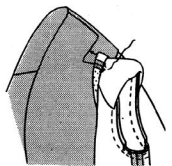
GRADE seam allowances by cutting to graduated widths and interfacing close to stitching. Clip curves.



Turn collar and facing to **INSIDE**, continuing to turn up lower edge along hemline. Press.

Hand-sew neck seam allowances together.

Catch-stitch facing to shoulder pads.



To ease cap and back edge of **SLEEVE (LINING)** (5) same as for sleeve.

Pin seam in sleeve. Pull up bobbin thread and adjust ease to fit. Baste. Stitch.

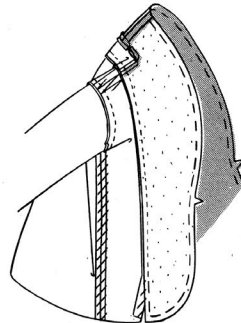
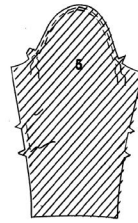
With **RIGHT SIDES TOGETHER**, pin sleeve into armhole, matching notches, underarm seams, small circles and **LARGE** circles to shoulder seam. Pull up bobbin threads to ease in fullness. Baste, adjusting ease evenly. Stitch.

Stitch again 3/8" (1cm) from raw edge below notches. Cut seam allowances close to second stitching.

Turn seam allowances toward sleeve.

Pin upper collar and facing to lining, **RIGHT SIDES TOGETHER**, matching notches seams and center backs. Stitch, easing facing to fit between notch and shoulder seam, starting and stopping 6" (15cm) from lower edges

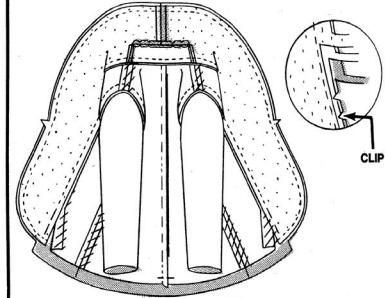
Press seam allowances toward lining.



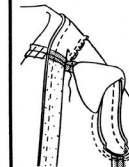
7. ATTACHING FACING AND LINING - FOR LINED JACKET

Pin facing/lining unit to jacket, **RIGHT SIDES TOGETHER**, matching notches, centers and seams. Pin in place. Stitch, easing facing to fit between notch and center back.

GRADE seam allowances. Cut interfacing close to stitching. Clip curves.



Turn facing and lining to **INSIDE**, continuing to turn up lower edge along hemline. Press.



Hand-sew neck seam allowances together.

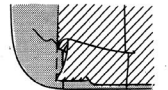
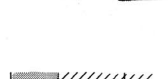
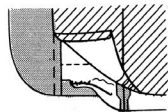
Tack lining to shoulder pads and at underarm curves.



Open out hem. Cut seam allowances within hem to 1/4" (6mm).

Replace hem and hand-sew in place. Press.

Turn under 5/8" (1.5cm) on lower edge of lining and slipstitch 5/8" (1.5cm) over raw edge of hem. The extra length forms a fold at lower edge to prevent lining from drawing. Press fold downward. Slipstitch front edge of lining in place.



Turn under 5/8" (1.5cm) on lower edge of each sleeve lining and slipstitch 5/8" (1.5cm) over raw edge of sleeve. The extra length forms a fold at lower edge to prevent lining from drawing. Press fold downward.



8. FINISHING

BUTTONHOLES AND BUTTONS

Make buttonhole in **RIGHT** front at marking.

Lap **RIGHT** front over **LEFT**, matching centers. Mark and sew button under buttonhole.

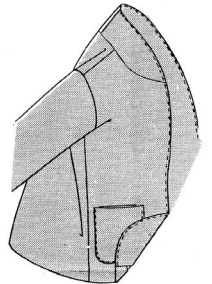
OPTIONAL EDGE-STITCHING, BLANKET OR OVERCAST STITCH

NOTE: Choose one of the following methods to finish outer edges of jacket.

Method #1

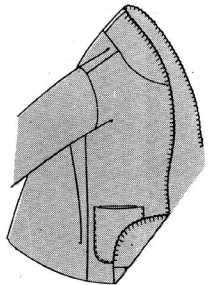
Finish outer edges with edge-stitching, starting and stopping at inner edge of front facing.

To edge-stitch, on **OUT-SIDE**, stitch close to finished outer edges of front.

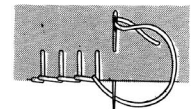
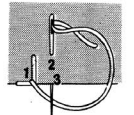
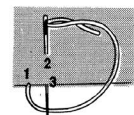


Method #2

Finish outer edges with a blanket stitch, starting at **LEFT** inner edge of front facing and working from **LEFT** to **RIGHT**.



To make a blanket stitch, thread a long needle with five (5) strands of embroidery cotton. Bring needle up at 1 (finished edge). Insert at 2 (desired distance from finished edge), then exit at 3 (directly below finished edge), pulling needle thru loop formed by thread. Repeat, keeping stitches and spacing even.

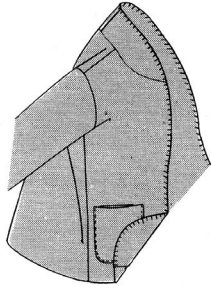


FABRIC KEY

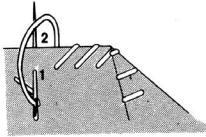
8083 - PAGE 4

Method #3

Finish outer edges with an overcast stitch, starting at LEFT inner edge of front facing and working from LEFT to RIGHT.



To make an overcast stitch, thread a long needle with five (5) strands of embroidery cotton. Bring needle up at 1 (finished edge). Insert at 2 (desired distance from finished edge) and bring needle over finished edge to start process again. Repeat, keeping slanted stitches an even length and distance apart.



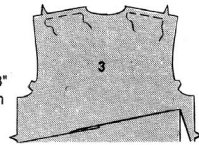
JACKET C

1. POCKETS

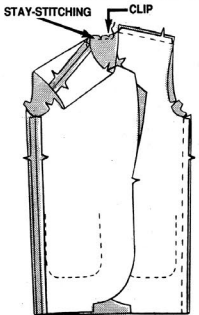
Same as described for JACKET A OR B, 1. POCKETS.

2. SEAMS AND UNDER COLLAR

To ease shoulder edges of BACK (3), machine-baste 5/8" (1.5cm) from raw edge between notch and neck seam line.



Pin back to fronts at shoulders. Pull up bobbin threads and adjust ease to fit. Baste. Stitch.



Stitch back to fronts at sides.

To stay-stitch neck edge, machine-stitch 1/2" (1.3cm) from raw edge between circles. Clip to stitching.

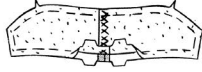


Stitch center back seam of UNDER COLLAR (8).

Lap back edges of UNDER COLLAR (INTER-FACING) (8) 1/4" (3.2cm). Catch stitch or machine-stitch together.



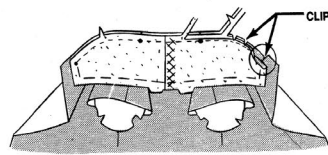
Baste interfacing to WRONG SIDE of under collar.



Pin under collar to neck edge of garment, RIGHT SIDES TOGETHER, matching notches, center backs, small circles and LARGE circles to shoulder seams. Stitch between small circles.

Cut interfacing close to stitching.

Clip to small circles on fronts. Cut seam allowances to 3/8" (1cm) from stitching. Clip curve.



3. SLEEVES

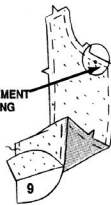
Same as described for JACKET A OR B, 3. SLEEVES.

4. FACING AND UPPER COLLAR

UPPER COLLAR AND FACING

Baste interfacing to WRONG SIDE of each FRONT FACING (9).

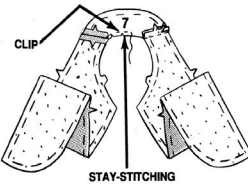
REINFORCEMENT STITCHING



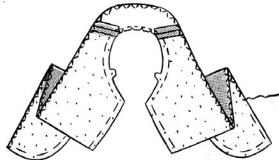
To reinforce neck edge of each front facing, machine-stitch 5/8" (1.5cm) from raw edge thru circles.

Stitch BACK FACING (7) to front facings at shoulders. Cut interfacing close to stitching.

Stay-stitch neck edge between circles. Clip to stitching.

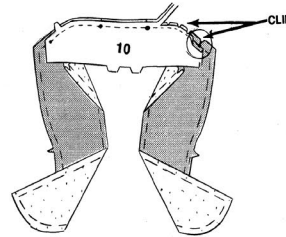


For Un-Lined Jacket, finish INNER edge of facing same as upper edge of pockets, disregarding notches.



Pin UPPER COLLAR (10) to neck edge of facing, RIGHT SIDES TOGETHER, matching notches, center backs, small circles and LARGE circles to shoulder seams. Stitch between small circles.

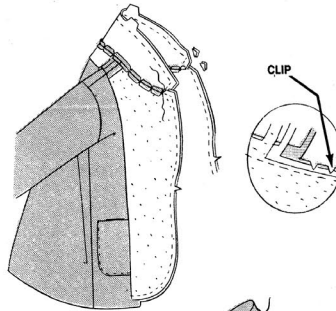
Clip to small circles on facing. Cut seam allowances to 3/8" (1cm) from stitching. Cut interfacing close to stitching. Clip curve.



5. ATTACHING FACING - FOR UN-LINED JACKET

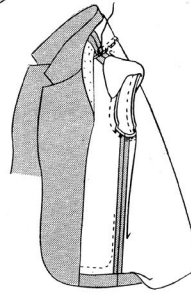
Pin upper collar and facing to under collar and jacket, RIGHT SIDES TOGETHER, matching notches and center backs. Baste, easing upper collar and front facing to fit. Stitch breaking stitching at circles.

Cut corners diagonally. GRADE seam allowances. Cut interfacing close to stitching. Clip curves.

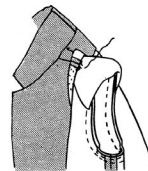


Turn facing to INSIDE, continuing to turn up lower edge along hemline. Press.

Hand-sew neck seam allowances together.



Catch-stitch facing to shoulder pads.

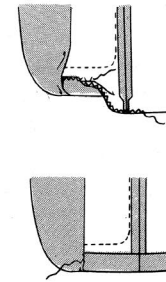


Open out hem. Cut seam allowances within hem to 1/4" (6mm).

Finish raw edge same as upper edge of pocket.

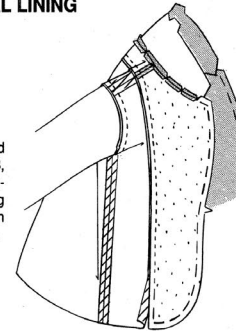
Replace hem and hand-sew in place. Press.

Slipstitch inner edge of facing to hem.



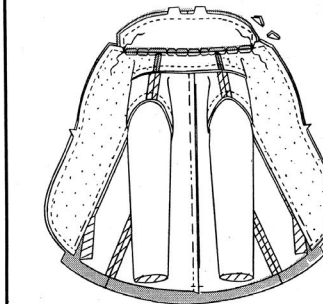
6. OPTIONAL LINING

Same as described for JACKET A OR B, 6. OPTIONAL LINING, disregarding reference to ease on inner edge of facing.



7. ATTACHING FACING AND LINING - FOR LINED JACKET

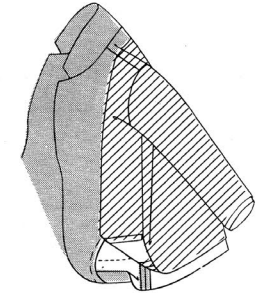
Pin facing/lining unit to jacket, RIGHT SIDES TOGETHER, matching notches, centers, small circles and seams. Baste, easing upper collar and front edge of facing above notch to fit. Stitch, breaking stitching at small circles.



Cut corners diagonally. GRADE seam allowances by cutting to graduated widths and interfacing close to stitching. Clip curves.



Turn facing and lining to INSIDE, continuing to turn up lower edge along hemline. Press.



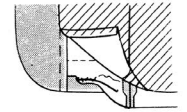
Hand-sew neck seam allowances together.



Tack lining to shoulder pads and at underarm curves.

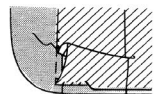


Open out hem. Cut seam allowances within hem to 1/4" (6mm).



Replace hem and hand-sew in place. Press.

Turn under 5/8" (1.5cm) on lower edge of lining and slipstitch 5/8" (1.5cm) over raw edge of hem. The extra length forms a fold at lower edge to prevent lining from drawing. Press fold downward.



Turn under 5/8" (1.5cm) on lower edge of each sleeve lining and slipstitch 5/8" (1.5cm) over raw edge of sleeve. The extra length forms a fold at lower edge to prevent lining from drawing. Press fold downward.



8. BUTTONHOLES AND BUTTONS

Make buttonhole in RIGHT front at marking.

Lap RIGHT front over LEFT, matching centers. Mark and sew button under buttonhole.



Congrats!

You've completed your sewing adventure

**SHARE
YOUR** LOOK



Post your pattern and tag us
[@simplicity_creative_group](#) and [#simplicitypatterns](#)
for a chance to be featured on our social media.

Look for more PDF patterns at [simplicity.com](https://www.simplicity.com)

Have a question or need help with your sewing project call us at
1-800-782-0323

McCall's
by **design**_{group}

McCall's ©2023 a division of IG Design Group Americas Inc. • Atlanta, GA 30342 USA www.thedesigngroup.com • All Rights Reserved. www.mccall.com • Made in the U.S.A. Fabriqué aux États-Unis.

To be used for individual private home use only and not for commercial or manufacturing purposes. • A usage privé seulement et non à des fins commerciales ou de production en série. • Para uso privado solamente, no se puede utilizar con propósitos de comercialización o de producción en serie.