

McCall's

M8432

VINTAGE 90's



Designed and printed in USA

Easy

Facile

MISSES' PANTS

Suggested Fabrics: Gabardine, Lightweight Wool and Wool Blends, Pinwale Corduroy, Wool Crepe, Wool Double Knits. **Pants A** also in Challis, Cotton Knits, Jersey. Not suitable for diagonals.

Interfacing: Lightweight Sew-in.

Notions: Two waistband hook and eyes, ½ yd. (0.5m) of 1" (2.5cm) elastic, one 1¼" (3cm) purchased belt.

Sizes	8	10	12	14	16	18	20	22	24
European	34	36	38	40	42	44	46	48	50

BODY MEASUREMENTS: Select pattern size based on body measurements

Bust	31½	32½	34	36	38	40	42	44	46	Ins.
Waist	24	25	26½	28	30	32	34	37	39	"
Hip-9" below waist	33½	34½	36	38	40	42	44	46	48	"
Back-neck to waist	15¾	16	16¼	16½	16¾	17	17¼	17½	17¾	"

Interfacing A, B - 20" - 1¾ yds.

Pants A	45"*	2½	2½	2½	2¾	2¾	3	3	3	Yds.
	60"*	1¾	1¾	2	2¼	2¼	2¼	2½	2½	"
Pants B	45"*	2¾	2¾	2¾	2½	2½	2¾	3	3	Yds.
	60"*	1¾	1¾	1¾	1¾	2	2¼	2¼	2¾	"

FINISHED GARMENT MEASUREMENTS (Includes Design and Wearing Ease)

A, B Waist	26½	27½	29	31	33	35	37	39	41	Ins.
A Hip	47	48	49½	51½	53½	55½	57½	59½	61½	"
B Hip	38½	39½	41	43	45	47	49	51	53	"
Width, each leg										
Pants A, B	12	12½	13	13½	14	14½	15	15½	16	Ins.
Finished side length from waist										
Pants A, B	40¼	40½	40¾	41	41¼	41½	41¾	42	42¼	Ins.

*with nap **without nap

PANTALONS POUR JEUNES FEMMES

Tissu Conseillé: Gabardine, Laine légère et Mélanges de laine, Velours côtelé à stries étroites, Crêpe de laine, Tricot double de laine. **Pantalon A** aussi en Challis, Tricot de coton, Jersey. Ne pas convenable pour les tissus à tissage diagonale. **Entoilage:** léger à coudre.

Mercurie: 2 crochets pour ceinture, 0.5m d'élastique de 2.5cm, 1 ceinture achetée de 3cm.

Tailles	8	10	12	14	16	18	20	22	24
Françaises	36	38	40	42	44	46	48	50	52
Européen	34	36	38	40	42	44	46	48	50

MESURES DU CORPS: Choisissez la taille du patron basée sur les mesures du corps

Poitrine	80	83	87	92	97	102	107	112	117	cm
Taille	61	64	67	71	76	81	87	94	99	"
Hanches (23cm au-dessous de la taille)										
	85	88	92	97	102	107	112	117	122	cm
Dos du cou à la taille	40	40.5	41.5	42	42.5	43	44	44.5	45	"

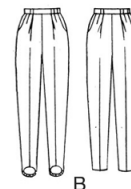
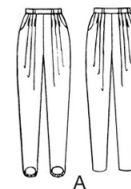
Entoilage A, B - 51cm - 1.3m

Pants A	115cm*	2.3	2.3	2.3	2.4	2.5	2.5	2.7	2.7	m
	150cm*	1.6	1.6	1.8	1.9	2.1	2.1	2.3	2.3	"
Pants B	115cm*	2.2	2.2	2.2	2.3	2.3	2.3	2.7	2.7	m
	150cm*	1.7	1.7	1.7	1.7	1.8	2.1	2.1	2.2	"

MESURES DES VÊTEMENTS FINI (Motif et aisance de port compris)

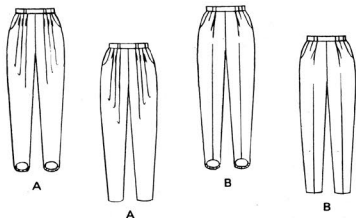
A, B Taille	67	70	74	79	84	89	94	99	104	m
A Hanches	119	122	126	131	136	141	146	151	156	"
B Hanches	98	100	104	109	114	119	124	130	135	"
Largeur, chaque jambe										
Pantalon A, B	30	32	33	34	36	37	38	39	41	m
Longueur finie - côté, taille à l'ourlet										
Pantalon A, B	102	103	104	104	105	105	106	107	107	m

*avec sens **sans sens

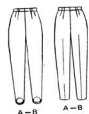


6150 McCALL'S®

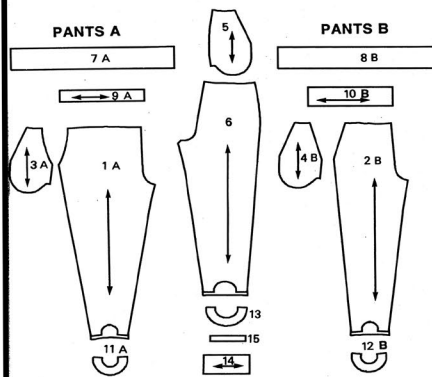
FRONT



BACK



PATTERN PIECES



- | | |
|---------------------------|---------------------------|
| PANTS A | PANTS B |
| 1. FRONT A | 2. FRONT B |
| 3. INSIDE POCKET A | 4. INSIDE POCKET B |
| 5. FRONT INSET AND POCKET | 5. FRONT INSET AND POCKET |
| 6. BACK | 6. BACK |
| 7. WAISTBAND A | 8. WAISTBAND B |
| 9. CARRIER A | 10. CARRIER B |
| 11. FRONT FACING A | 12. FRONT FACING B |
| 13. BACK FACING | 13. BACK FACING |
| 14. STIRRUP | 14. STIRRUP |
| 15. ELASTIC | 15. ELASTIC |
| 16. ELASTIC | 16. ELASTIC |

PATTERN MARKINGS

- **GRAINLINE:** Place on straight grain of fabric, an even distance from selvage or fold.
- **FOLD LINE:** Place on fold of fabric.
- **CUTTING LINE:** For cutting.
- - - **SEAM LINE:** For stitching.
- **SEAM ALLOWANCE:** Distance between cutting and seam lines, usually 5/8" (1.5cm). On multi-sized patterns seam allowance is included, but not printed on tissue.
- **NOTCHES AND CIRCLES:** For matching pattern pieces.
- **FINISHED GARMENT MEASUREMENT SYMBOL:** The finished garment measurements at bust and/or hip are printed on your Front pattern pieces. The measurement includes Body Measurement + Wearing Ease + Design Ease. The measurement excludes pleats, tucks, darts and seam allowances. Measurements are also printed on the back of the pattern envelope when space is available.

ADJUST IF NECESSARY

A pattern is made to fit body measurements, with extra ease for comfort and style. Adjust pieces before placing on fabric. Adjust back waist, sleeve and finished garment lengths using McCALL'S Easy-Rule Guide.

TO SHORTEN: Crease on Easy-Rule Guide. Fold necessary amount. Tape in place.



TO LENGTHEN: Cut on dotted lines of Easy-Rule Guide. Spread necessary amount. Tape over paper.

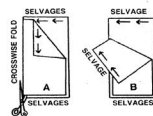


When Easy-Rule Guide is not on tissue, lengthen or shorten at lower edge.

CUTTING AND MARKING

SHRINK FABRIC not labeled pre-shrunk. Press **CIRCLE LAYOUT** for View, Size, Fabric Width. Use **WITH NAP** layout for fabrics with one-way designs, nap, pile or sur face shading. Because most knits have surface shading, a with nap layout is used. For **DOUBLE THICKNESS (WITH FOLD)** - fold fabric with Right Sid Together.

*** DOUBLE THICKNESS (WITHOUT FOLD)** - For fabrics with nap, fold fabric crosswise, **RIGHT SIDES TOGETHER**. Mark as shown. Cut along crosswise fold of fabric (A). Turn upper layer 180° so arrows go in same direction and place over lower layer, **RIGHT SIDES TOGETHER (B)**.



For **SINGLE THICKNESS** - place fabric Right Side Up. Before **CUTTING** place all pieces on fabric according to layout. Overlap margins. Pin. Cut **ACCURATELY** through fabric and pattern on cutting line. Cut notches outward.

Before **REMOVING PATTERN**, transfer markings to Wrong Side of fabric. Two ways which may be used quickly are the Pin and Chalk Pencil method or Tracing Paper and Dressmaker Wheel.

SEWING INFORMATION

PIN AND FIT
Pin or baste seams, **RIGHT SIDES TOGETHER**, matching notches. Fit garment before stitching major seams.

WITH A CONVENTIONAL MACHINE

STITCH using a 5/8" (1.5cm) seam allowance unless otherwise specified. Use guide line marking on throat plate of machine for accurate seam allowance.

PRESS seams open unless otherwise stated. Clip if necessary to press seams flat.

WITH AN OVERLOCK (SERGER) MACHINE

SERGE cutting away the excess seam allowances (5/8" (1.5cm) unless otherwise specified). Press seams to one side. **OVEREDGE** to finish a raw edge, without cutting away fabric.

For **FUSIBLE** interfacing, follow manufacturer's directions.

FABRIC KEY

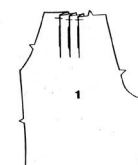


SEWING DIRECTIONS
PANTS - VIEW A OR B

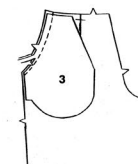
1. FRONTS

VIEW A

To make pleats in each **FRONT (1)**, on **OUT-SIDE**, bring dotted lines to solid lines in direction of arrows. Baste across pleats.

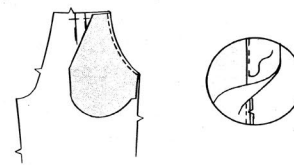


Stitch **INSIDE POCKET (3)** to front along slanted edge, **RIGHT SIDES TOGETHER**, matching notches.



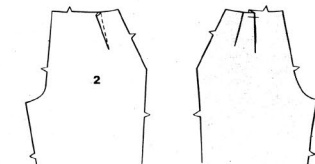
Grade seam allowance by cutting to graduated widths. Clip curve.

Turn pocket to inside. Press. Understitch by stitching thru facing and seam allowances close to seam. (This prevents facing from rolling to outside.)



VIEW B

To make dart in each **FRONT (2)**, fold on solid lines, **RIGHT SIDES TOGETHER** and stitch on dotted lines. Press fold of dart toward center. To make pleats, on **OUTSIDE** bring dotted lines to solid lines in direction of arrows. Baste across pleats.



CUTTING LAYOUTS

Black area denotes fabric.

Pattern pieces to be placed with printed side up.

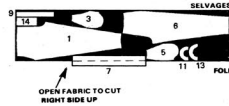
Pattern pieces to be placed with printed side down.

NOTE: Pattern pieces may interlock more closely for smaller sizes.

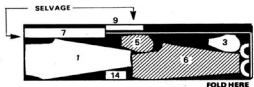
IMPORTANT: Layouts illustrated are suitable for corresponding Miss or Miss Petite sizes.

A PANTS use pieces 1, 3, 5, 6, 7, 9, 11, 13, 14 (piece 7 is also cut of interfacing and piece 15 is cut of elastic)

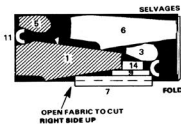
44" 45" (115cm) fabric with nap or without nap sizes 8-10



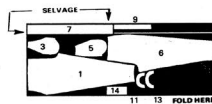
sizes 12-14-16



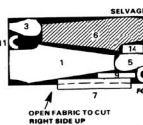
58" 60" (150cm) fabric with nap sizes 8-10-12



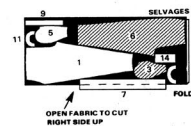
sizes 14-16



58" 60" (150cm) fabric without nap sizes 8-10

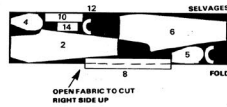


sizes 12-14-16

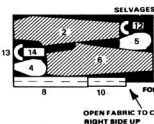


B PANTS use pieces 2, 4, 5, 6, 8, 10, 12, 13, 14 (piece 8 is also cut of interfacing and piece 15 is cut of elastic)

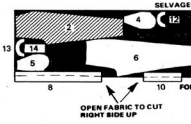
44" 45" (115cm) fabric with nap or without nap all sizes



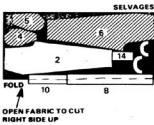
58" 60" (150cm) fabric with nap sizes 8-10



sizes 12-14-16



58" 60" (150cm) fabric without nap all sizes



FABRIC KEY



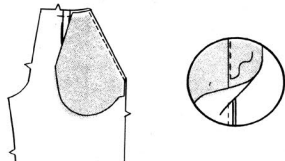
6150 - PAGE 2

Stitch **INSIDE POCKET (4)** to front along straight edge, **RIGHT SIDES TOGETHER**, matching notches.

GRADE seam allowances by cutting to graduated widths.

Turn pocket to **INSIDE**. Press.

Understitch by stitching thru facing and seam allowances close to seam. (This prevents facing from rolling to outside.)

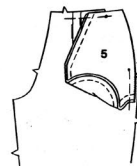


FOR VIEW A OR B

View A is shown.

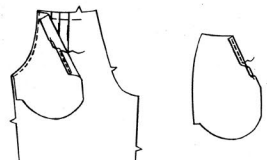
FOR RIGHT SIDE: Pin **FRONT INSET AND POCKET (5)** to inside pocket, **RIGHT SIDES TOGETHER**. Stitch all around pocket. Press seam allowances together.

Baste upper and side edges together, having finished edge of front at circles.



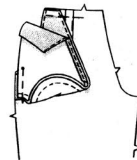
FOR LEFT SIDE: Finish long straight **UN-MARKED** edge of inside pocket with a 5/8" (1.5cm) narrow hem.

Finish long straight **UN-MARKED** edge of front inset and pocket with a 5/8" (1.5cm) narrow hem.



Pin front inset and pocket to inside pocket, **RIGHT SIDES TOGETHER**. Stitch around lower edge. Press seam allowances together.

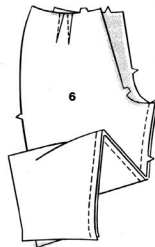
Baste upper edge of **LEFT** inside pocket to front, keeping inset and pocket free; then baste sides, having finished edge at circle.



2. BACK AND SEAMS

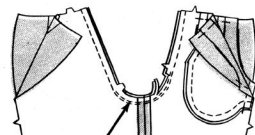
To make darts in **BACK (6)**, fold on solid lines, **RIGHT SIDES TOGETHER** and stitch on dotted lines. Press fold of darts toward center.

Stitch front to back at inside leg edges.



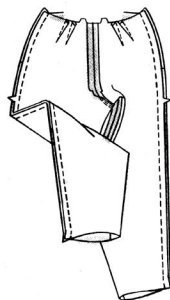
Stitch center seam, matching inside leg seams.

To reinforce curve, stitch again just inside previous stitching between notches. Cut seam allowances between notches to 3/8" (1cm).



REINFORCEMENT STITCHING

Stitch back to front at sides.

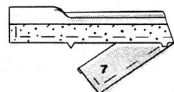


3. WAISTBAND

View A is shown.

Press under 5/8" (1.5cm) on long **UN-NOTCHED** edge of **WAISTBAND (7)** or (8).

Baste interfacing to **WRONG SIDE** of **NOTCHED** edge of waistband. Sew to fold line.



Fold **CARRIER (9)** or (10) in half, lengthwise, **RIGHT SIDES TOGETHER**. Stitch long edges together.

GRADE seam allowances by cutting to graduated widths.



Turn **RIGHT SIDE OUT**. Bring middle of carrier to stitching. Press.

Cut four carriers from this strip, each 3 3/4" (8.5cm) long. (Discard excess.)

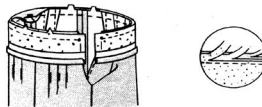


With **RIGHT SIDES UP**, baste carriers to lower positions on waistband, having raw edges even.



Pin waistband to garment and back part of **LEFT** pocket, **RIGHT SIDES TOGETHER**, matching notches, centers, square to **RIGHT** side seam and circles to opening edges.

GRADE seam allowances by cutting to graduated widths and interfacing close to stitching. Press seam allowances toward waistband.



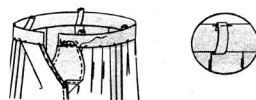
Fold waistband on fold line, **RIGHT SIDES TOGETHER**. Stitch ends.

Cut corners diagonally. **GRADE** seam allowances.

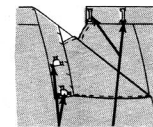


Turn **RIGHT SIDE OUT**. Hand-sew edge over seam. Press.

Turn under 5/8" (1.5cm) on raw edge of carriers and pin to positions on waistband. Stitch carriers in place.



Sew hooks and eyes on waistband.



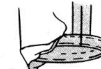
HOOKS EYES

4. HEMS OR STIRRUPS

HEMS

Turn up a 1 1/4" (3.2cm) hem on lower edge. Hand-baste close to fold. Press.

Turn under 1/4" (6mm) on raw edge and stitch in place with a conventional machine.



OR, open out hem and finish raw edge with a zigzag stitch or overedge using an overlock machine. Replace hem and hand-sew in place.

STIRRUPS

Finish **UN-NOTCHED** edge of **FRONT FACING (11)** or (12) and **BACK FACING (13)** with a zigzag stitch or turn under 1/4" (6mm) and edge-stitch with a conventional machine or overedge using an overlock machine.



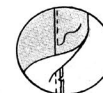
Pin facings to lower edge of pants, **RIGHT SIDES TOGETHER**, matching notches. Stitch curved edges.

GRADE seam allowances. Clip curves.



Press seam allowances toward facing. **UNDERSTITCH** by stitching thru facing and seam allowances close to seam. (This prevents facing from rolling to outside.)

Turn facing to **INSIDE**. Press.



Fold **STIRRUP (14)** in half, lengthwise, **RIGHT SIDES TOGETHER**. Stitch long edge together.

GRADE seam allowances.



Turn **RIGHT SIDE OUT**. Bring middle of casing to stitching. Press.



Cut two pieces of elastic, using **ELASTIC (15)** pattern piece.



Insert elastic thru stirrup. Baste raw edges.



Open out facings and pin stirrup to lower edge of pants, matching circles and having raw edges even. Stitch.

Turn stirrup to 3/8" (1cm).

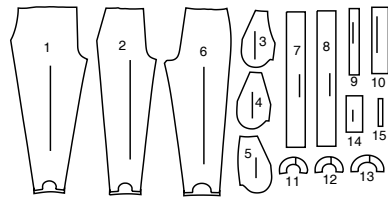


Turn facing to **INSIDE**, turning under 5/8" (1.5cm) on lower edge of facing. Hand-sew in place. Press.



FOR View B, to crease pants bring side seam to inside leg seam and press. Bring crease into front pleat.

SUPPLEMENTAL CUTTING LAYOUTS



- 1 FRONT-A
- 2 FRONT-B
- 3 INSIDE POCKET-A
- 4 INSIDE POCKET-B
- 5 FRONT INSET AND POCKET
- 6 BACK
- 7 WAISTBAND-A
- 8 WAISTBAND-B
- 9 CARRIER-A
- 10 CARRIER-B
- 11 FRONT FACING-A
- 12 FRONT FACING-B
- 13 BACK FACING
- 14 STIRRUP
- 15 ELASTIC

PATTERN MARKINGS

- GRAINLINE:** Place on straight grain of fabric, parallel to selvage or fold.
- FOLDLINE:** Place line on fold of fabric.
- BUTTONHOLE MARKING:** Indicates exact length and placement of buttonholes.
- BUTTON MARKING:** Indicates button placement.
- NOTCHES AND SYMBOLS:** For matching seams and construction details.
- Indicates the Bustline, Waistline, Hip and/or Biceps. Measurements refer to circumference of Finished Garment (Body Measurement + Wearing Ease + Design Ease). Adjust pattern if necessary. The measurement excludes pleats, tucks, darts and seam allowances.
- SEAM ALLOWANCE:** 5/8" (1.5cm) included unless otherwise indicated, but not printed on tissue.

ADJUST IF NECESSARY

- Lengthen or Shorten at adjustment lines (==)** or where indicated on pattern. If substantial length is added, you may need to purchase additional fabric.
- TO SHORTEN:** Crease along adjustment line. Make a fold half the amount needed. Tape in place.
- TO LENGTHEN:** Slash between adjustment lines. Spread amount as needed, keeping edges parallel. Tape over paper.
- When Alteration lines are not on tissue, lengthen or shorten at lower edge.

SHRINK FABRIC if not labeled pre-shrunk. Press.

CIRCLE LAYOUT for View, Size, Fabric Width.

Use **WITH NAP** layout for fabrics with one-way designs, nap, pile or surface shading. Because most knits have surface shading, a with nap layout is used.

For **DOUBLE THICKNESS (WITH FOLD)** - fold fabric with right sides together.

*** DOUBLE THICKNESS (WITHOUT FOLD)** - For fabrics with nap, fold fabric crosswise, right sides together. Mark as shown. Cut along crosswise fold of fabric (A). Turn upper layer 180° so arrows go in same direction and place over lower layer, right sides together (B).

For **SINGLE THICKNESS** - place fabric right side up. (For Fur Pile fabrics, place pile side down.)

CUTTING AND MARKING

★ Cut other pieces first, allowing enough fabric to cut this piece. Open fabric. For "Cut 1" pieces, cut piece once on single layer of fabric with piece face up on right side of fabric.

Pattern may have cutting lines for several sizes. Select the proper cutting line or pattern pieces for your size.

Before **CUTTING** place all pieces on fabric according to layout. Pin. (**Layouts show approximate position of pattern pieces; position may vary according to your pattern size.**) Cut **ACCURATELY**, cutting notches outward.

Before removing pattern, **TRANSFER MARKINGS** and lines of construction to Wrong Side of fabric, using the Pin and Chalk/Pencil method or Tracing Paper and Dressmaker Wheel. Markings needed on right side of fabric should be thread traced.

NOTE: Broken-line boxes (a! b! c!) in layouts represent pieces cut by measurements provided.

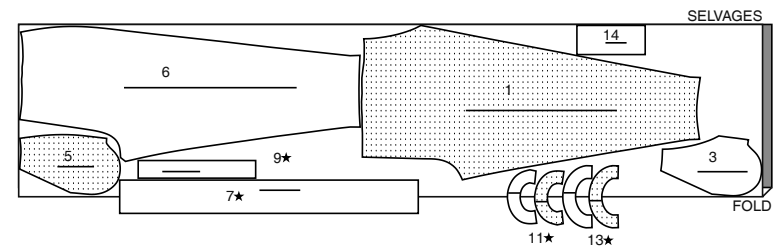
CUTTING LAYOUTS

RIGHT SIDE OF PATTERN	WRONG SIDE OF PATTERN	RIGHT SIDE OF FABRIC	WRONG SIDE OF FABRIC
-----------------------	-----------------------	----------------------	----------------------

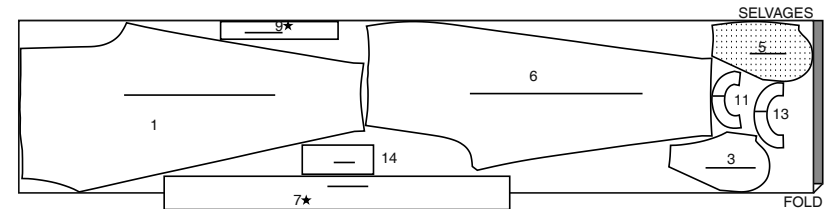
PANTS A

USE PIECES 1 3 5 6 7 9 11 13 14

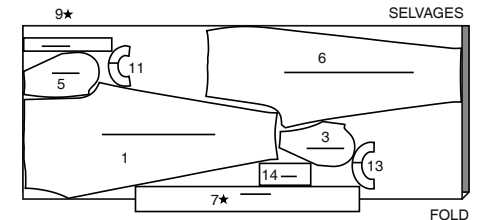
45" (115CM)
WITH NAP
SIZES 8 10 12 14 16 18



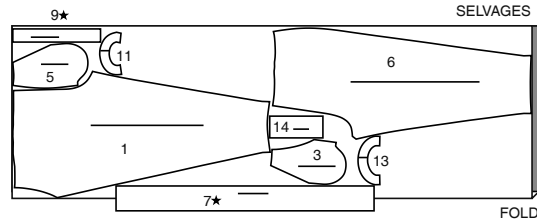
45" (115CM)
WITH NAP
SIZES 20 22 24



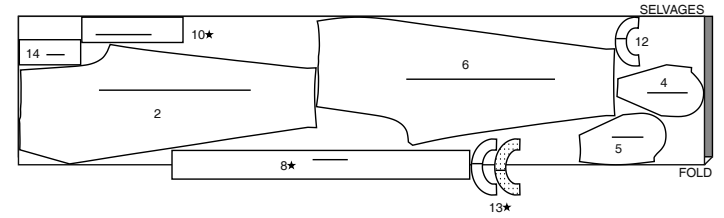
60" (150CM)
WITH NAP
SIZES 8 10 12 14 16 18



60" (150CM)
WITH NAP
SIZES 20 22 24



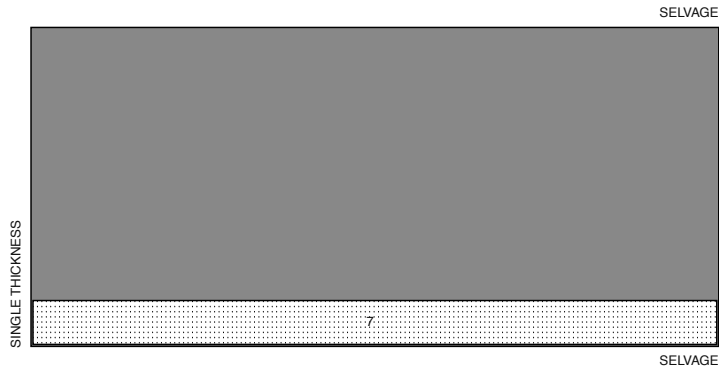
45" (115CM)
WITH NAP
SIZES 20 22 24



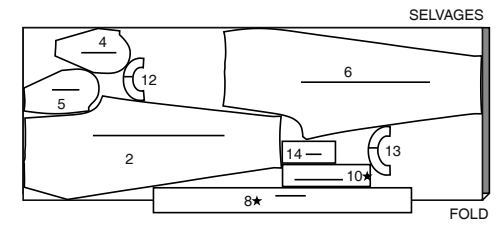
INTERFACING A

USE PIECE 7

20" (51CM)
ALL SIZES



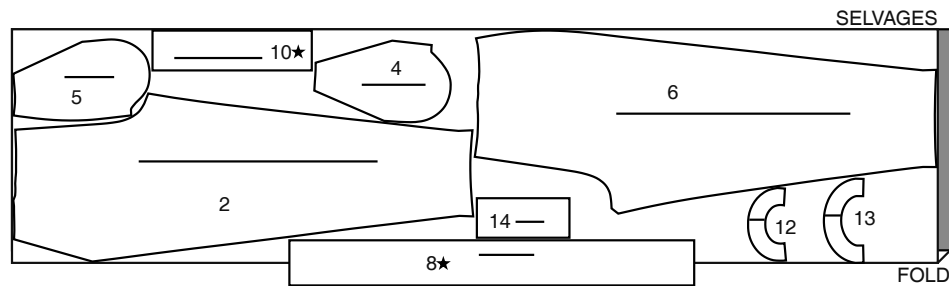
60" (150CM)
WITH NAP
ALL SIZES



PANTS B

USE PIECES 2 4 5 6 8 10 12 13 14

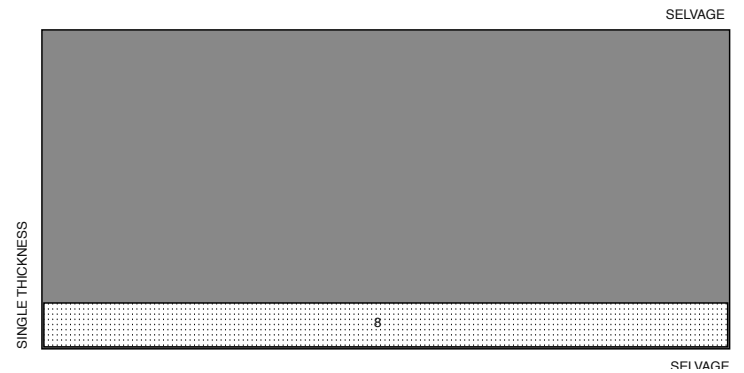
45" (115CM)
WITH NAP
SIZES 8 10 12 14 16 18



INTERFACING B

USE PIECE 8

20" (51CM)
ALL SIZES





Congrats!

You've completed your sewing adventure

**SHARE
YOUR** LOOK



Post your pattern and tag us
[@simplicity_creative_group](#) and [#simplicitypatterns](#)
for a chance to be featured on our social media.

Look for more PDF patterns at simplicity.com

Have a question or need help with your sewing project call us at
1-800-782-0323

McCall's
by **design**_{group}