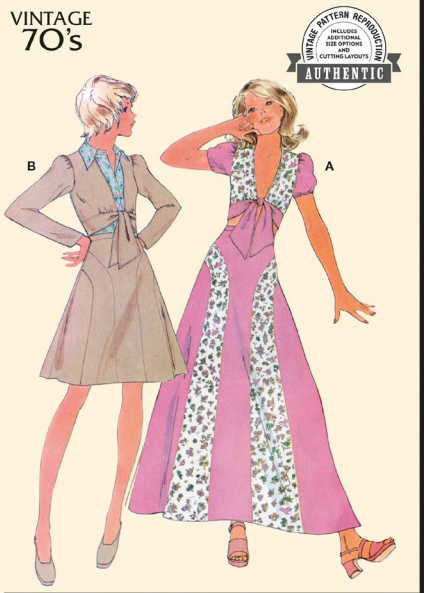


McCall's

M8431



VINTAGE
70's



Designed and printed in USA

Easy

MISSES' TOP AND SKIRT

Suggested Fabrics: Challis, Chintz, Denim, Lightweight Cotton, Lightweight Wool, Linen, Wool Crepe.

Notions: **Top A:** ¾ yd. (0.7m) of ¼" (6mm) elastic. **Skirt A,B:** One 7" (18cm) zipper, two hooks and eyes, seam binding or stretch lace (optional).

Sizes	8	10	12	14	16	18	20	22	24	26
European	34	36	38	40	42	44	46	48	50	52

BODY MEASUREMENTS: Select pattern size based on body measurements

Bust	31½	32½	34	36	38	40	42	44	46	48	Ins.
Waist	24	25	26½	28	30	32	34	37	39	41	"
Hip-9" below waist	33½	34½	36	38	40	42	44	46	48	50	"
Back-neck to waist	15¾	16	16¼	16½	16¾	17	17¼	17½	17¾	18	"

Interfacing A,B 20" 1 1 1 1½ 1½ 1½ 1½ 1½ 1½ 1½ Yds.

Top and Skirt A (Top Sleeves, Bands, Skirt Front 1 and 3, Skirt Back and Waistband)

45**	3	3	3	3¼	3¼	3¼	3½	3½	3½	3½	3½	Yds.
60**	2½	2½	2½	2¾	2¾	2¾	2¾	2¾	2¾	2¾	2¾	"

Contrast (Top Front and Back, Facings, Skirt Front 2 and Side Backs)

45**	2½	2½	2½	2½	2½	2½	2½	2½	2½	2½	Yds.
60**	1¾	1¾	1¾	1¾	1¾	1¾	1¾	1¾	1¾	2	"

Top and Skirt B

45**	3¾	3¾	3¾	3¾	3¾	3¾	4¼	4¾	4¾	4¾	Yds.
60**	2¾	2¾	2¾	2¾	2¾	3	3¼	3¼	3¼	3¼	"

FINISHED GARMENT MEASUREMENTS (Includes Design and Wearing Ease)

A,B Bust	39	40	41½	43½	45½	47½	49½	51½	53½	55½	Ins.
A,B Waist	26½	27½	29	31	33	35	37	39	41	43	"
A,B Hip	40½	41½	43	45	47	49	51	53	55	57	"
Width, lower edge											
Skirt B	68	69	70½	72½	74½	76½	78½	80½	82½	84½	Ins.
Finished back length from base of neck											
Top A,B	15¼	15½	15¾	16	16¼	16½	16¾	17	17¼	17½	Ins.
Finished back length from waist											
Skirt A	39¾	40	40¾	40½	40¾	41	40¾	40½	40¾	42	Ins.
Skirt B	23¾	24	24¼	24½	24¾	25	25¼	25½	25¾	26	"

*with nap **without nap

Facile

HAUT ET JUPE POUR JEUNES FEMMES

Tissus Conseillés: Challis, Chintz, Denim, Coton léger, Laine légère, Toile de lin, Crêpe de laine.

Merci: **Haut A:** 0.7m d'élastique de 6mm. **Jupe A,B:** 1 fermeture à glissière de 18cm, 2 agrafes, extra-fort ou dentelle extensible (facultatif).

Tailles	8	10	12	14	16	18	20	22	24	26
Françaises	36	38	40	42	44	46	48	50	52	54
Européen	34	36	38	40	42	44	46	48	50	52

MESURES DU CORPS: Choisissez la taille du patron basée sur les mesures du corps

Poitrine	80	83	87	92	97	102	107	112	117	122	cm
Taille	61	64	67	71	76	81	87	94	99	104	"
Hanches (23cm au-dessous de la taille)	85	88	92	97	102	107	112	117	122	127	cm
Dos du cou à la taille	40	40.5	41.5	42	42.5	43	44	44.5	45	46	"

Entoilage A,B 51cm 0.9 0.9 0.9 0.9 1.0 1.0 1.1 1.1 1.3 1.3 m

Haut et jupe A (Manches du haut, Bandes, Jupe devant 1 et 3, Jupe dos et Ceinture)

115cm*	2.6	2.7	2.7	3.0	3.0	3.0	3.2	3.2	3.3	3.3	m
150cm*	1.9	1.9	1.9	2.1	2.1	2.2	2.5	2.5	2.6	2.6	"

Contraste (Haut devant et dos, Parementures, Jupe devant 2 et Côtés dos)

115cm*	2.3	2.3	2.3	2.3	2.3	2.4	2.4	2.4	2.4	2.4	m
150cm*	1.6	1.6	1.6	1.6	1.6	1.6	1.7	1.7	1.7	1.8	"

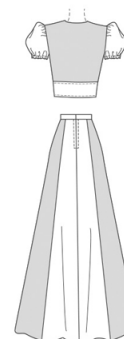
Haut et jupe B

115cm*	3.3	3.3	3.3	3.4	3.4	3.5	3.9	4.0	4.0	4.1	m
150cm*	2.5	2.5	2.6	2.6	2.6	2.7	3.0	3.0	3.0	3.0	"

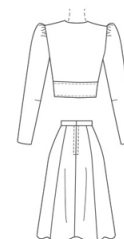
MESURES DES VÊTEMENTS FINI (Motif et aisance de port compris)

A,B Poitrine	99	102	105	110	116	120	126	130	136	141	cm
A,B Taille	67	70	74	79	84	89	94	99	104	109	"
A,B Hanches	103	105	109	114	119	124	130	135	140	145	"
Largeur à l'ourlet											
Jupe B	173	175	179	184	189	194	199	204	210	215	cm
Longueur finie – dos, votre nuque à l'ourlet											
Haut A,B	39	39	40	41	41	42	43	43	44	44	cm
Longueur finie – dos, taille à l'ourlet											
Jupe A	101	102	102	103	104	104	105	105	106	107	cm
Jupe B	60	61	62	62	63	64	64	65	65	66	"

*avec sens **sans sens



A

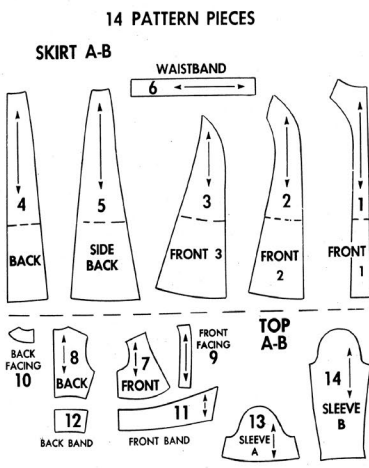


B

McCall's 3921



SELECT PATTERN PIECES FOR VIEW YOU HAVE CHOSEN



VIEW A - USE PIECES 1 thru 13
VIEW B - USE PIECES 1 thru 12, 14

HOW TO USE A McCALL'S PATTERN

STUDY THE PATTERN

- Select the pieces needed for the View you have chosen.
- Check the identification markings—Number, Size, Name and View—on each piece.
- Understand the pattern markings.

Grain Line: Line with arrows indicates straight grain of fabric. Put line an even distance from finished edge (selvage).

Place on fold: Fold Line: Place line on fold of fabric.

Cutting line: For cutting.

Seam Line: For sewing.

Seam Allowance: Distance between cutting and seam lines is usually 1/2" (1.5 cm).

Notches: Used for matching pattern pieces.

Read directions carefully.

ADJUST IF NECESSARY

- A pattern is made to fit specific body measurements, allowing extra ease for comfort and style.
- If your body measurements differ from those specified on the pattern envelope, adjust the pieces before placing them on the fabric.
- To change the length, use the Easy-Rule Guide, a feature of a McCall's pattern. Compare your back waist and finished garment lengths with those listed.

To Shorten: Crease the pattern on the Easy-Rule Guide. Then fold a pleat the necessary amount. Pin or tape in place.

To Lengthen: Cut the pattern on the dotted lines of the Easy-Rule Guide. Spread the necessary amount. Pin or tape over paper.

See McCall's Sewing Book for other adjustments.

NOTE THE MEASUREMENTS

The abbreviations "mm" and "cm" in parenthesis are the metric equivalent for inches. They are provided for the convenience of those using the metric system of measurement.

1/8" (3mm)	1/2" (1.2cm)	1" (2.5cm)
1/4" (6mm)	5/8" (1.5cm)	1 1/4" (3.1cm)
3/8" (9mm)	3/4" (2cm)	2" (5cm)

LAYOUT FOR CUTTING

- Press each pattern piece with warm, dry iron.
- Shrink fabric unless labeled pre-shrunk. Press fabric.
- Circle cutting layout for View, Size, Fabric width and type you are using (with or without nap).
- Use With Nap layout for fabrics with one-way designs, nap, pile or surface shading. Place all pieces in one direction.
- Use Without Nap layout for other fabrics. Place pieces in either direction.
- Arrange fabric for cutting as shown on layout: Double Thickness—fold fabric with Right Sides Together. Single Thickness—place fabric Right Side Up.
- Before cutting, place all pieces on fabric according to layout. Overlap margins. Pin.

CUTTING AND MARKING

- Cut through fabric and pattern on cutting line. Cut notches outward. Accurate cutting insures a better fit.
- Before removing pattern, transfer markings to Wrong Side of fabric. Although there are several ways to do this, the one which may be used quickly and safely on the widest range of fabrics is the Pin and Chalk Pencil method. See McCall's Sewing Book for other marking information.

If you have any questions about sewing, please write Meg Carter, The McCall Pattern Company, 230 Park Avenue, New York, New York 10017.

SEWING DIRECTIONS

READ directions for View you are making before beginning to sew.

Metric measurements are given in parenthesis.

STUDY the drawings carefully.



KEEP pattern pieces handy for reference.

HANDLE fabric as little as possible.

SEW exactly on seam lines indicated on pattern. To make a seam:

PIN two pieces of fabric, Right Sides Together, matching notches and seam lines.

BASTE, if desired, by hand or machine.

FIT garment before stitching major seams.

STITCH in direction of arrows. Use 3/8" (1.5cm) seam allowance unless otherwise indicated.

PRESS seams open unless otherwise noted.

FINISH raw edges of seams, facings and hems to prevent raveling.



- Black area denotes fabric.
- Pattern pieces to be placed with printed side down.
- Pattern pieces to be placed with printed side up.
- Pattern pieces to be cut a second time.

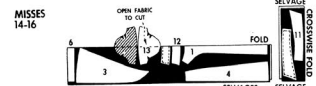
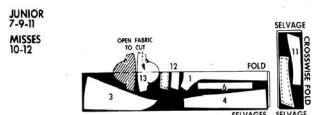
Metric measurements are given in parenthesis.

CUTTING LAYOUTS

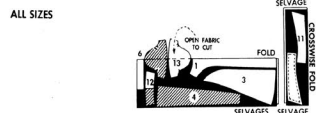
Disregard any perforations on pattern pieces.

VIEW A - TOP AND SKIRT

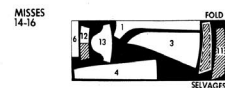
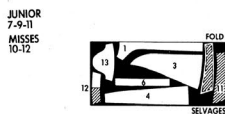
35" 36"(90cm) FABRIC WITHOUT NAP



44" 45"(115cm) FABRIC WITHOUT NAP

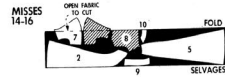
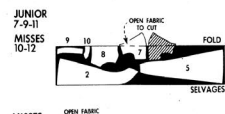


58" 60"(150cm) FABRIC WITH NAP

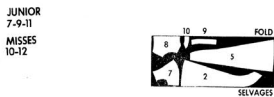


CONTRAST

35" 36"(90cm) FABRIC WITHOUT NAP



44" 45"(115cm) FABRIC WITHOUT NAP

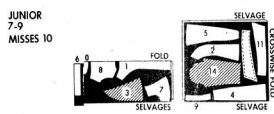


58" 60"(150cm) FABRIC WITH NAP

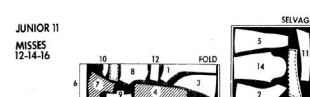


VIEW B - TOP AND SKIRT

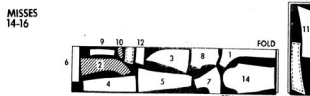
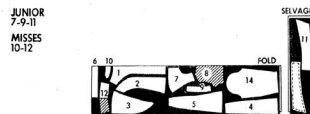
35" 36"(90cm) FABRIC WITHOUT NAP



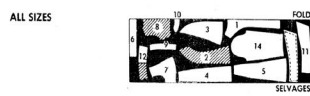
35" 36"(90cm) FABRIC WITHOUT NAP (CONTINUED)



44" 45"(115cm) FABRIC WITHOUT NAP



58" 60"(150cm) FABRIC WITH NAP



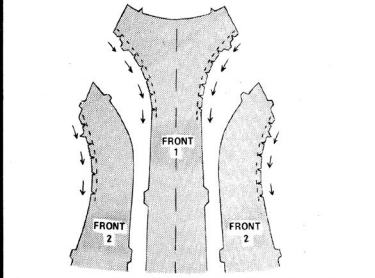
SKIRT VIEW A VIEW B

1. FRONT

Mark center front.

STAY-STITCHING

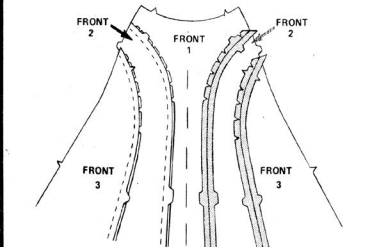
Stay-stitch inward curve on side edges of fronts 1 and 2 as illustrated. To STAY-STITCH, machine-stitch thru single thickness of fabric, using a regular stitch length 1/2" (1.3cm) from cut edge in direction of arrows. Clip to stay-stitching.



SEAMS

Stitch fronts 2 to front 1.

Stitch fronts 3 to fronts 2.

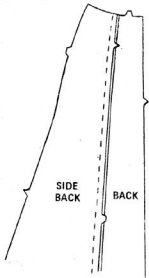


CONTINUED ON OTHER SIDE

2. BACK

SIDE BACK SEAMS

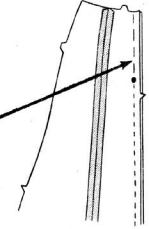
Stitch side backs to backs.



CENTER BACK SEAM

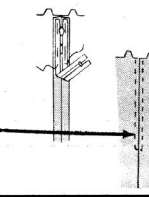
Stitch center back seam from lower edge to circle.

Machine-baste opening edges together above circle. Press open.

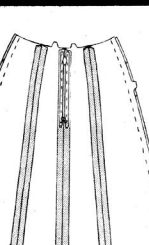


ZIPPER

On **INSIDE**, center zipper face down over seam, with pull-tab 1" (2.5cm) down from upper edge. Hand-baste.

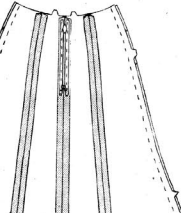


On **OUTSIDE**, stitch 1/4" (6mm) from seam with a zipper foot. Remove basting.



3. SIDE SEAMS

Stitch back to front at sides. Clip curves if necessary to press seams open.

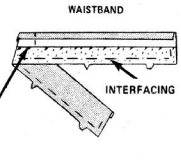


4. WAISTBAND

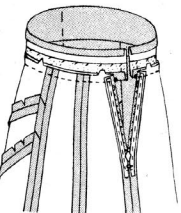
Mark center front.

Turn under 5/8" (1.5cm) on long UN-NOTCHED edge of waistband. Press.

Baste interfacing to NOTCHED edge of waistband on **WRONG SIDE**. Sew loosely at fold line.



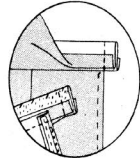
Pin waistband to skirt, **RIGHT SIDES TOGETHER**, matching notches, center fronts and having circles at opening. Stitch.



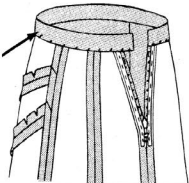
4. CONTINUED

To reduce bulk, **GRADE SEAM ALLOWANCES**: cut seam allowances to graduated widths. Cut interfacing close to stitching. Turn seam allowances toward waistband.

Fold waistband on fold line, **RIGHT SIDES TOGETHER**. Stitch ends. Cut corners diagonally. **GRADE SEAM ALLOWANCES**.



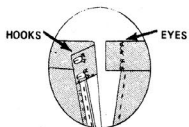
Turn waistband **RIGHT SIDE OUT**. Hem free edge over seam. Press.



5. FINISHING

HOOKS AND EYES

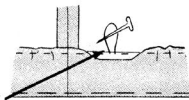
Sew 2 hooks and eyes to waistband as illustrated.



HEM

Try on skirt. Mark hemline.

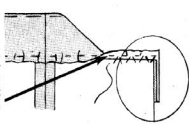
Turn up lower edge for hem. Hand-baste along fold. Cut hem to an even width.



Machine-baste 1/4" (6mm) from raw edge. Pull up bobbin thread to ease in fullness. Press.

Finish raw edge: see **SEWING DIRECTIONS**.

Sew with **INVISIBLE STITCH**: turn hem back on skirt. Pick up a thread of skirt; then pick up a thread of hem diagonally above.

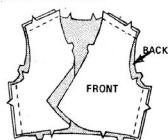


OR, finish with seam binding or stretch lace.



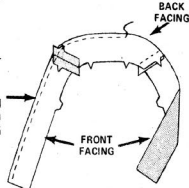
1. SHOULDER AND SIDE SEAMS

Stitch fronts to back at shoulders and sides.



2. FACING

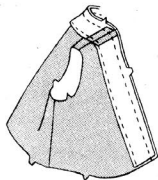
Stitch back facing to front facings at shoulders.



Stitch 1/4" (6mm) from long UN-NOTCHED edge. Finish raw edge: see **SEWING DIRECTIONS**.

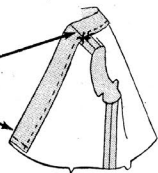
2. CONTINUED

Pin facing to front and neck edges, **RIGHT SIDES TOGETHER**, matching notches and seams. Stitch.



To reduce bulk, **GRADE SEAM ALLOWANCES**: cut seam allowances to graduated widths. Clip curves.

Turn facing to **INSIDE**. Press. Catch-stitch to shoulder seams.



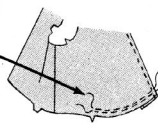
Hand-baste lower edge of facing to **TOP**.

Top-stitch 1/4" (6mm) from front and neck edges.



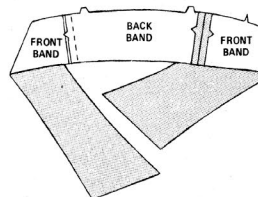
3. FRONT GATHERS

To gather lower edge of fronts, machine-baste along lines indicated on pattern.

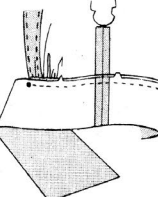


4. BAND

Stitch back band to front bands at side:

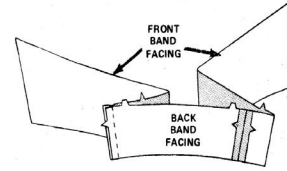


Pin band to lower edge of **TOP**, **RIGHT SIDES TOGETHER**, matching notches, seams, and having front edges of **TOP** at circles on band. Draw up and adjust gathers to fit. Baste. Stitch. Turn seam allowances toward **TOP**.

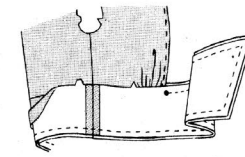


4. CONTINUED

Stitch back band facing to front band facing at sides.

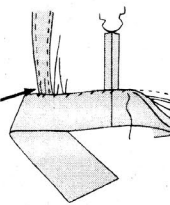


Stitch facing to band along lower edge, front ends, and upper edges to circles as illustrated.

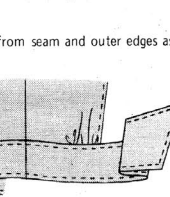


To reduce bulk, **GRADE SEAM ALLOWANCES**: cut corners diagonally. Cut seam allowances to graduated widths.

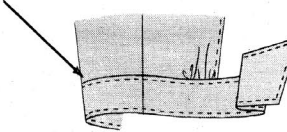
Turn **RIGHT SIDE OUT**, turning seam allowances between circles toward band.



Turn under 5/8" (1.5cm) on free edge of band facing and slipstitch over seam stitching.



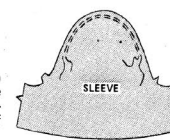
Top-stitch band 1/4" (6mm) from seam and outer edges as illustrated.



5. SLEEVES

SLEEVE **VIEW A**

To gather in extra fullness in sleeve cap, machine-baste along lines indicated on pattern, thru single thickness of fabric.

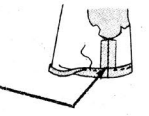


Stitch sleeve seam.



5. CONTINUED

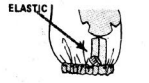
Turn up lower edge of sleeve on casing line. Press.



Turn under 1/4" (6mm) on raw edge and stitch flat to sleeve, leaving an opening at seam to insert elastic.

Cut a length of elastic a comfortable upper arm measurement, plus 1/2" (1.3cm).

Insert elastic thru casing. Lap ends of elastic 1/2" (1.3cm) and sew together securely. Stitch opening in casing.

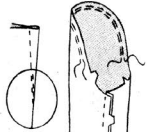


SLEEVE **VIEW B**

To gather in extra fullness in sleeve cap, machine-baste along lines indicated on pattern, thru single thickness of fabric.



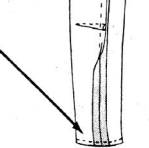
To make a dart, fold fabric **RIGHT SIDES TOGETHER**, match markings and pin.



Stitch. Backstitch to secure threads. Press down.

Stitch sleeve seam.

Stitch 1/4" (6mm) from lower edge of sleeve. Finish raw edge same as facing.



Turn up hem. Press.

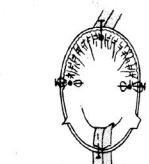
Sew with **INVISIBLE STITCH**: turn hem back on sleeve. Pick up a thread of sleeve; then pick up a thread of hem diagonally above.



SETTING SLEEVE INTO ARMHOLE **VIEW A** **VIEW B**

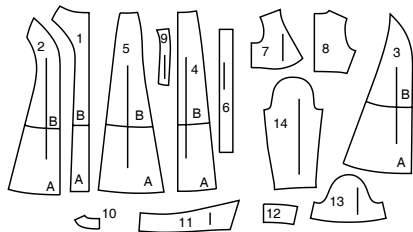
Turn sleeve to **RIGHT SIDE**.

Place sleeve into armhole with **RIGHT SIDES TOGETHER**. Pin, matching underarm seams, small circles and **LARGE** circle to shoulder seam. Draw up and adjust gathers to fit, wrapping thread ends around pins.



Baste, easing in sleeve below **SMALL** circles to fit. Stitch with sleeve uppermost. Press seam allowances together. Turn seam allowances toward sleeve.

SUPPLEMENTAL CUTTING LAYOUTS



- 1 Skirt Front 1
- 2 Skirt Front 2
- 3 Skirt Front 3
- 4 Skirt Back
- 5 Skirt Side Back
- 6 Waistband (for Skirt)
- 7 Top Front
- 8 Top Back
- 9 Front Facing (for Top)
- 10 Back Facing (for Top)
- 11 Front Band (for Top)
- 12 Back Band (for Top)
- 13 Sleeve-A
- 14 Sleeve-B

PATTERN MARKINGS

- GRAINLINE:** Place on straight grain of fabric, parallel to selvage or fold.
- FOLDLINE:** Place line on fold of fabric.
- BUTTONHOLE MARKING:** Indicates exact length and placement of buttonholes.
- BUTTON MARKING:** Indicates button placement.
- NOTCHES AND SYMBOLS:** For matching seams and construction details.
- Indicates the Bustline, Waistline, Hip and/or Biceps. Measurements refer to circumference of Finished Garment (Body Measurement + Wearing Ease + Design Ease). Adjust pattern if necessary. The measurement excludes pleats, tucks, darts and seam allowances.
- SEAM ALLOWANCE:** 5/8" (1.5cm) included unless otherwise indicated, but not printed on tissue.

ADJUST IF NECESSARY

- Lengthen or Shorten at adjustment lines (==) or where indicated on pattern. If substantial length is added, you may need to purchase additional fabric.
- TO SHORTEN:** Crease along adjustment line. Make a fold half the amount needed. Tape in place.
- TO LENGTHEN:** Slash between adjustment lines. Spread amount as needed, keeping edges parallel. Tape over paper.
- When Alteration lines are not on tissue, lengthen or shorten at lower edge.

CUTTING AND MARKING

- SHRINK FABRIC** if not labeled pre-shrunk. Press.
- CIRCLE LAYOUT** for View, Size, Fabric Width.
- Use **WITH NAP** layout for fabrics with one-way designs, nap, pile or surface shading. Because most knits have surface shading, a with nap layout is used.
- For **DOUBLE THICKNESS (WITH FOLD)** - fold fabric with right sides together.
- * DOUBLE THICKNESS (WITHOUT FOLD)** - For fabrics with nap, fold fabric crosswise, right sides together. Mark as shown. Cut along crosswise fold of fabric (A). Turn upper layer 180° so arrows go in same direction and place over lower layer, right sides together (B).
- For **SINGLE THICKNESS** - place fabric right side up. (For Fur Pile fabrics, place pile side down.)
- ★ Cut other pieces first, allowing enough fabric to cut this piece. Open fabric. For "Cut 1" pieces, cut piece once on single layer of fabric with piece face up on right side of fabric.
- Pattern may have cutting lines for several sizes. Select the proper cutting line or pattern pieces for your size.
- Before **CUTTING** place all pieces on fabric according to layout. Pin. (Layouts show approximate position of pattern pieces; position may vary according to your pattern size.) Cut **ACCURATELY**, cutting notches outward.
- Before removing pattern, **TRANSFER MARKINGS** and lines of construction to Wrong Side of fabric, using the Pin and Chalk Pencil method or Tracing Paper and Dressmaker Wheel. Markings needed on right side of fabric should be thread traced.
- NOTE:** Broken-line boxes (a| b| c|) in layouts represent pieces cut by measurements provided.

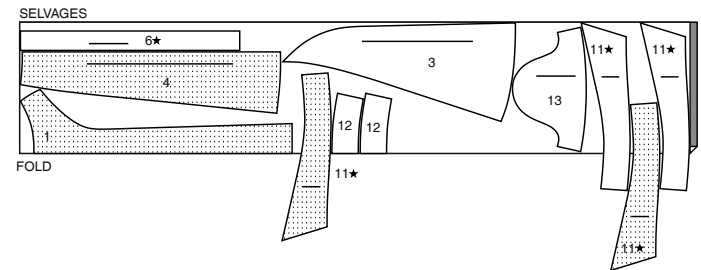
CUTTING LAYOUTS

RIGHT SIDE OF PATTERN	WRONG SIDE OF PATTERN	RIGHT SIDE OF FABRIC	WRONG SIDE OF FABRIC
-----------------------	-----------------------	----------------------	----------------------

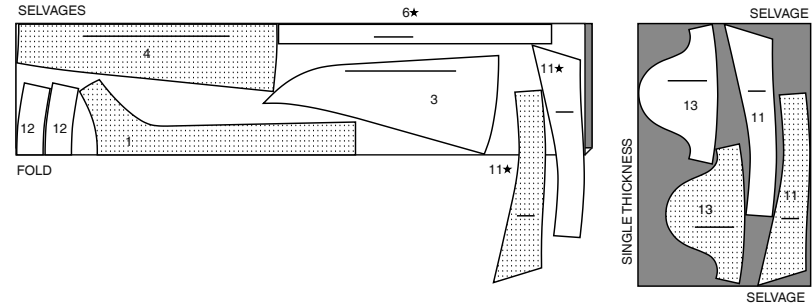
TOP AND SKIRT A

USE PIECES 1 3 4 6 11 12 13

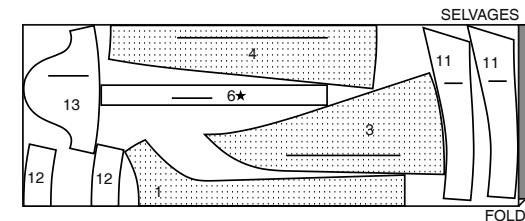
45" (115CM)
WITH NAP
SIZES 8-10-12-14-16-18



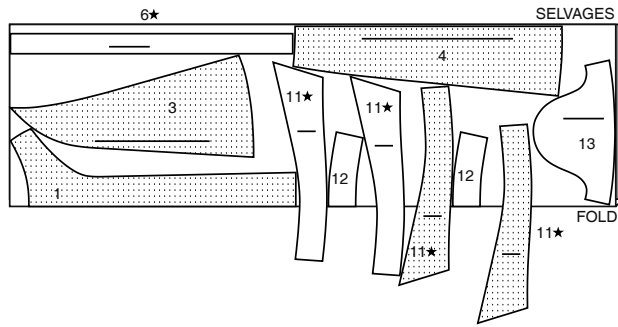
45" (115CM)
WITH NAP
SIZES 20-22-24-26



60" (150CM)
WITH NAP
SIZES 8-10-12-14-16-18



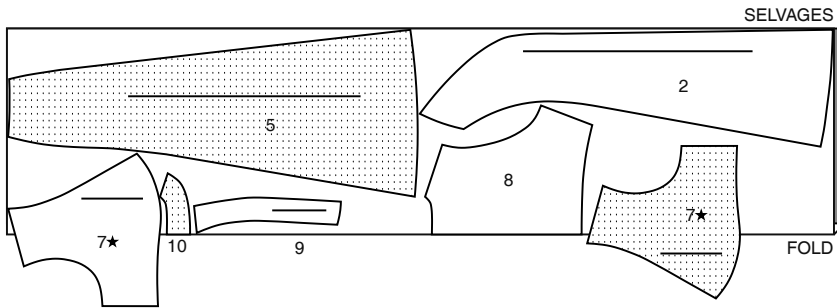
60" (150CM)
WITH NAP
SIZES 20-22-24-26



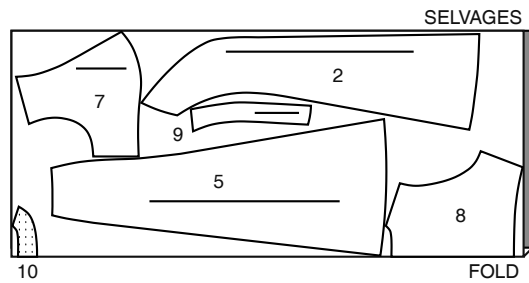
CONTRAST A (TOP FRONTS AND BACKS FACINGS, SKIRT FRONT 2 AND SIDE BACKS)

USE PIECES 2 5 7 8 9 10

45" (115CM)
WITH NAP
ALL SIZES



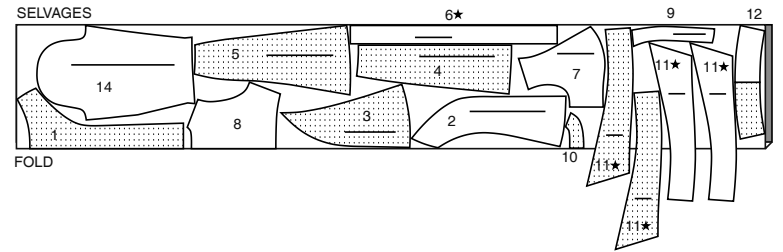
60" (150CM)
WITH NAP
ALL SIZES



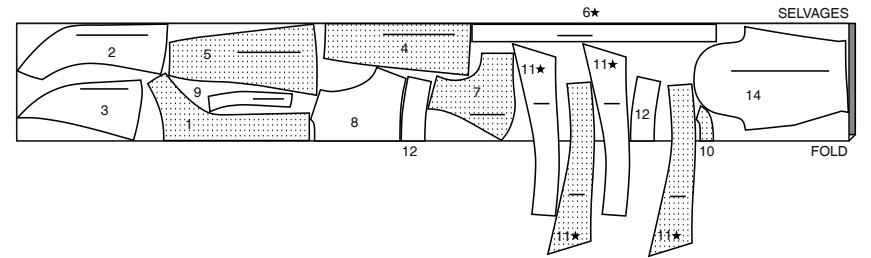
TOP AND SKIRT B

USE PIECES 1 2 3 4 5 6 7 8 9 10 11 12 14

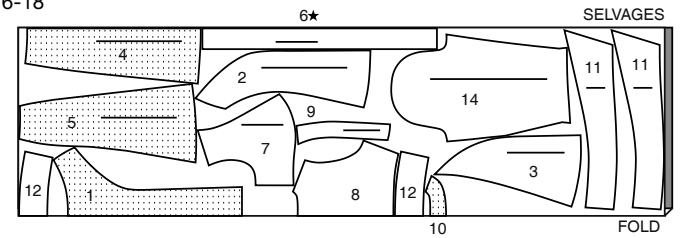
45" (115CM) WITH NAP
SIZES 8-10-12-14-16-18



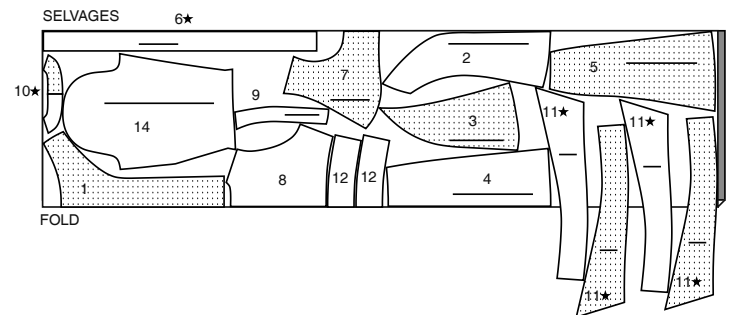
45" (115CM) WITH NAP / SIZES 20-22-24-26



60" (150CM) WITH NAP
SIZES 8-10-12-14-16-18



60" (150CM) WITH NAP
SIZES 20-22-24-26





Congrats!

You've completed your sewing adventure

**SHARE
YOUR** LOOK



Post your pattern and tag us
[@simplicity_creative_group](#) and [#simplicitypatterns](#)
for a chance to be featured on our social media.

Look for more PDF patterns at [simplicity.com](https://www.simplicity.com)

Have a question or need help with your sewing project call us at
1-800-782-0323

McCall's
by **design**^{group}