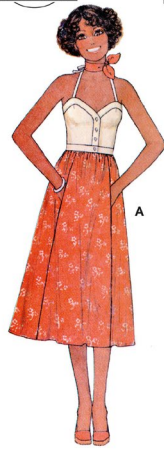


**McCall's**

**M8429**

SIZE K5 (8-10-12-14-16)  
TAILLE

VINTAGE  
70's



**LAURA ASHLEY**  
SINCE 1953

Manufactured and distributed by IG Design Group  
Americas Inc. under license from Laura Ashley, Inc. ©  
& © 2023 Laura Ashley Brands. All rights reserved.



Designed and  
printed in USA

Create your own designer garment with this McCall's licensed sewing pattern.  
Créez votre propre vêtement haute couture avec ce patron de couture sous licence McCall's.



Easy

**MISSES' TOP AND SKIRT**

**Suggested Fabrics:** Chambray, Challis, Cotton Blends, Lightweight Corduroy, Lightweight Cotton, Linen, Muslin. **Interfacing:** Lightweight Sew-in, Woven or Non-woven.

**Notions: Top A, B:** Four ½" (1.3cm) buttons. **Skirt A, B:** One 7" (18cm) zipper, one ½" (1.3cm) button.

Sizes	8	10	12	14	16	18	20	22	24	26
European	34	36	38	40	42	44	46	48	50	52

**BODY MEASUREMENTS: Select pattern size based on body measurements**

<b>Bust</b>	31½	32½	34	36	38	40	42	44	46	48	Ins.
<b>Waist</b>	24	25	26½	28	30	32	34	37	39	41	"
<b>Hip-9" below waist</b>	33½	34½	36	38	40	42	44	46	48	50	"
<b>Back-neck to waist</b>	15¾	16	16¼	16½	16¾	17	17¼	17½	17¾	18	"

<b>Top A, B</b>	45**	1	1	1½	1½	1¾	1¾	1¾	1½	1½	Yds.
	60**	¾	¾	¾	1	1	1	1	1½	1½	"

<b>Interfacing A, B (Top)</b>	20"	¾	¾	¾	¾	1½	1¾	1¾	1½	1½	Yds.
-------------------------------	-----	---	---	---	---	----	----	----	----	----	------

<b>Skirt A</b>	45**	2¼	2¼	2¾	2½	2½	2½	2½	2¾	2¾	Yds.
	60**	2	2	2	2	2	2	2	2	2	"

<b>Interfacing A, B (Skirt)</b>	20"	¾	1	1	1	1½	1½	1¾	1¾	1¾	Yds.
---------------------------------	-----	---	---	---	---	----	----	----	----	----	------

<b>Skirt B</b>	45**	2½	3	3	3½	3½	3½	3¼	3¼	3¾	Yds.
	60**	2¾	2¾	2¾	2½	2½	2½	2¾	2¾	2¾	"

**FINISHED GARMENT MEASUREMENTS (Includes Design and Wearing Ease)**

<b>Width, lower edge</b>											
<b>Skirt A</b>	76	77	78½	80½	82½	84½	86½	88½	90½	92½	Ins.
<b>Finished back length from waist</b>											
<b>Skirt A, Skirt B (ind. ruffle)</b>	30¾	31	31¼	31½	31¾	32	32¼	32½	32¾	33	Ins.

\*with nap \*\*without nap

Facile

**HAUT ET JUPE POUR JEUNES FEMMES**

**Tissus Conseillés:** Chambray, Challis, Cotonnades, Velours côtelé léger, Coton léger, Toile de lin, Mouseline. **Entoilage:** à coudre léger, tissé ou non-tissé.

**Mercurie: Haut A, B:** 4 boutons de 1.3cm. **Jupe A, B:** 1 fermeture à glissière de 18cm, 1 bouton de 1.3cm.

Tailles	8	10	12	14	16	18	20	22	24	26
Françaises	36	38	40	42	44	46	48	50	52	54
Européen	34	36	38	40	42	44	46	48	50	52

**MESURES DU CORPS: Choisissez la taille du patron basée sur les mesures du corps**

<b>Poitrine</b>	80	83	87	92	97	102	107	112	117	122	cm
<b>Taille</b>	61	64	67	71	76	81	87	94	99	104	"
<b>Hanches (23cm au-dessous de la taille)</b>	85	88	92	97	102	107	112	117	122	127	cm
<b>Dos du cou à la taille</b>	40	40.5	41.5	42	42.5	43	44	44.5	45	46	"

<b>Haut A-B</b>	115cm*	0.9	0.9	1.0	1.0	1.0	1.1	1.1	1.3	1.4	1.4	m
	150cm*	0.8	0.8	0.8	0.8	0.9	0.9	0.9	1.0	1.1	1.3	"

<b>Entoilage A, B (Haut)</b>	51cm	0.7	0.7	0.7	0.8	1.0	1.1	1.1	1.4	1.4	1.5	m
------------------------------	------	-----	-----	-----	-----	-----	-----	-----	-----	-----	-----	---

<b>Jupe A</b>	115cm*	2.1	2.1	2.2	2.3	2.3	2.4	2.4	2.4	2.5	m
	150cm*	1.8	1.8	1.8	1.8	1.8	1.8	1.8	1.8	1.8	"

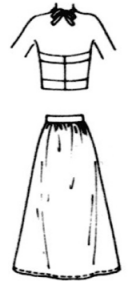
<b>Entoilage A, B (Jupe)</b>	51cm	0.8	0.9	0.9	0.9	1.0	1.0	1.1	1.1	1.3	1.3	m
------------------------------	------	-----	-----	-----	-----	-----	-----	-----	-----	-----	-----	---

<b>Jupe B</b>	115cm*	2.6	2.7	2.7	2.9	2.9	2.9	3.0	3.0	3.0	3.1	m
	150cm*	2.2	2.2	2.2	2.3	2.3	2.4	2.4	2.5	2.5	2.6	"

**MESURES DES VÊTEMENTS FINI (Motif et aisance de port compris)**

<b>Largeur à l'ourlet</b>											
<b>Jupe A</b>	193	196	199	204	210	215	220	225	230	235	cm
<b>Longueur finie – dos, taille à l'ourlet</b>											
<b>Jupe A, Jupe B (y compris le volant)</b>	78	79	79	80	81	81	82	83	83	84	cm

\*avec sens \*\*sans sens



A



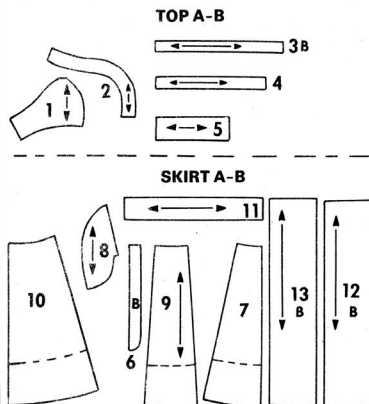
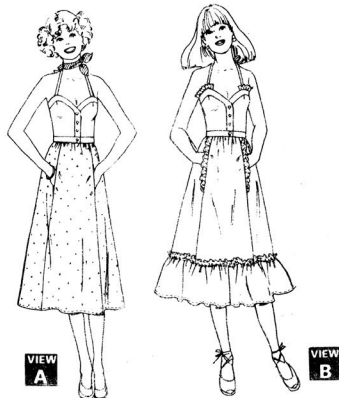
B

5614

CAREFREE PATTERNS FROM McCALL'S

SELECT PATTERN PIECES FOR VIEW YOU HAVE CHOSEN

13 PATTERN PIECES



- 1. TOP, 2. BAND, 3. RUFFLE, 4. TIE, 5. WAISTBAND, 6. UPPER RUFFLE, 7. SKIRT FRONT, 8. POCKET, 9. SKIRT SIDE FRONT, 10. SKIRT BACK, 11. WAISTBAND, 12. LOWER RUFFLE FRONT, 13. LOWER RUFFLE BACK

HOW TO USE A McCALL'S CAREFREE PATTERN

STUDY THE PATTERN

Select pieces for VIEW you have chosen.

Check identification markings - Number, Size, Name and View - on each piece.

Understand the pattern markings.

Grainline: Place line on straight grain of fabric, an even distance from selvage.

Place on fold: Fold Line: Place on fold of fabric.

Cutting Line: For cutting.

Seam Line: For sewing.

Seam Allowance: Distance between cutting and seam lines is usually 5/8" (1.5cm).

Notches and Circles: For matching pattern pieces.

ADJUST IF NECESSARY \*

A pattern is made to fit specific body measurements, with extra ease for comfort and style.

Adjust pieces before placing on fabric. Back waist and finished garment lengths can be adjusted using

To Shorten: Crease pattern on Easy-Rule Guide. Fold pleat necessary amount. Tape in place.

To Lengthen: Cut pattern on dotted lines of Easy-Rule Guide. Spread necessary amount. Tape over paper.

NOTE THE MEASUREMENTS

Abbreviations "mm" and "cm" are metric equivalent for inches. They are provided for the convenience of those using the metric system of measurement.

- 1/8" (3mm), 1/2" (1.3cm), 1" (2.5cm), 1/4" (6mm), 5/8" (1.5cm), 1 1/4" (3.1cm), 3/8" (1cm), 3/4" (2cm), 2" (5cm)

LAYOUT FOR CUTTING

Shrink fabric not labeled pre-shrunk. Press.

Circle layout for View, Size, Fabric Width.

Use With Nap layout for fabrics with one-way designs, nap, pile or surface shading.

Use Without Nap layout for other fabrics.

Arrange fabric for cutting as shown on layout:

Double Thickness - fold fabric with Right Sides Together.

Single Thickness - place fabric Right Side Up. Before cutting, place all pieces on fabric according to layout. Overlap margins. Pin.

CUTTING AND MARKING

Cut accurately through fabric and pattern on cutting line. Cut notches outward.

Before removing pattern, transfer markings to Wrong Side of fabric. One way which may be used quickly and safely on the widest range of fabrics is the Pin and Chalk Pencil method.

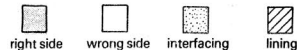
Questions about sewing - Write Meg Carter, The McCall Pattern Company, 230 Park Avenue, New York, New York 10017.

\*See McCall's Sewing Book for other adjustments and marking information.

SEWING DIRECTIONS

READ directions for View you are making before beginning to sew.

STUDY the drawings carefully.



SEW exactly on seam lines indicated on pattern. To make a seam:

PIN two pieces of fabric, Right Sides Together matching notches and seam lines. BASTE, if desired, by hand or machine.

FIT garment before stitching major seams.

STITCH in direction of arrows. Use 5/8" (1.5cm) seam allowance unless otherwise indicated.

PRESS seams open unless otherwise noted.

SEWING TERMS

GRADE: Cut seam allowances to graduated widths and interfacing close to stitching.

UNDERSTITCHING: Row of machine stitching thru facing and seam allowances close to seam line. Prevents facing from rolling to outside.

INVISIBLE STITCH: Used for hemming. Turn hem back. Pick up a thread of garment; then pick up a thread of hem diagonally above.

CUTTING LAYOUTS

Black area denotes fabric. Pattern pieces to be placed with printed side up. Pattern pieces to be placed with printed side down. Pattern pieces to be cut a second time. Metric measurements are given in parentheses.

VIEW TOP A use pieces 1, 2, 4, 5

35" 36" (90cm) fabric without nap all sizes



44" 45" (115cm) fabric with nap all sizes



44" 45" (115cm) fabric without nap sizes 8-10-12-14

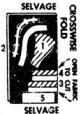


size 16

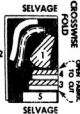


VIEW TOP B use pieces 1 thru 5

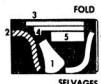
35" 36" (90cm) fabric without nap sizes 8-10-12



sizes 14-16



44" 45" (115cm) fabric with nap all sizes

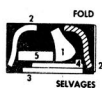


44" 45" (115cm) fabric without nap sizes 8-10



44" 45" (115cm) - CONTINUED

sizes 12-14-16



TOP INTERFACING

21", 22" or 25" (53cm, 56cm or 64cm) all sizes

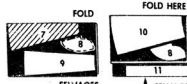


NOTE: SKIRT A-B

Compare your desired finished skirt length with the pattern before cutting. Only 5/8" (1.5cm) seam is allowed at lower edge. Adjust pattern if necessary.

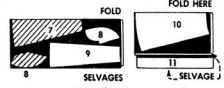
VIEW SKIRT A use pieces 7 thru 11

44" 45" (115cm) fabric without nap sizes 8-10-12

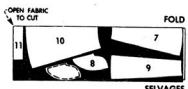


44" 45" (115cm) - CONTINUED

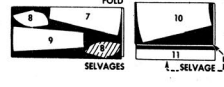
sizes 14-16



44" 45" (115cm) fabric without nap sizes 8-10-12-14

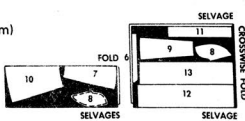


size 16



VIEW SKIRT B use pieces 6 thru 13

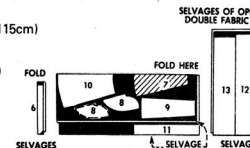
35" 36" (90cm) fabric without nap all sizes



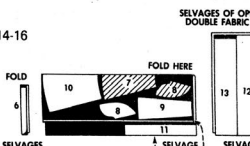
IMPORTANT:

For layouts marked "Open Double Fabric," cut 2 pieces of fabric; place one layer over other, Right Sides Together, so nap runs in one direction.

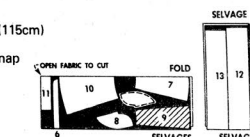
44" 45" (115cm) fabric with nap sizes 8-10



sizes 12-14-16



44" 45" (115cm) fabric without nap all sizes



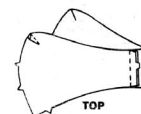
5614

TOP VIEW A-B

1. DARTS AND CENTER BACK SEAM

Stitch darts in TOP. Press toward front edge.

Stitch center back seam in TOP.



2. FINISHING UPPER AND FRONT EDGES

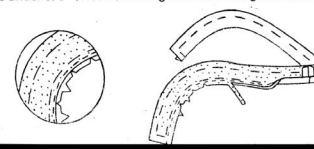
BAND

Baste interfacing to WRONG SIDE of band.

Stitch center back seam in band. Cut interfacing close to stitching.

Stitch long NOTCHED edge of band 1/2" (1.3cm) from raw edge. Cut interfacing close to stitching. Clip inward curve to stitching.

Press under 5/8" (1.5cm) on long NOTCHED edge of band.

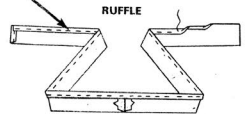


Pin band to upper and front edges of TOP, RIGHT SIDES UP, matching notches and center back seams, having pressed under edges along seam lines. Stitch band in place close to edge, as illustrated.

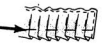


**RUFFLE** **VIEW B**

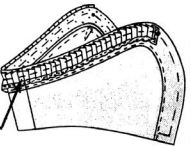
Stitch center back seam in ruffle.  
NARROW HEM upper edge and ends of ruffle, taking a 3/8" (1cm) seam.



On OUTSIDE, make pleats in direction of arrows. Baste across lower edge. Press.

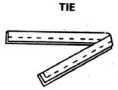


With RIGHT SIDES TOGETHER, pin ruffle to upper edge of band, matching center back seams and having ends of ruffle at circles. Hand-baste in place.



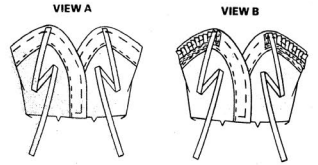
**TIES**

Fold tie on fold line, RIGHT SIDES TOGETHER. Stitch seam edges, taking a 3/8" (1cm) seam, leaving front edge free.



Cut corners diagonally. GRADE seam allowances: see SEWING TERMS.

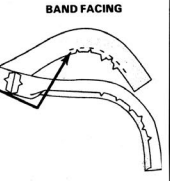
Turn tie RIGHT SIDE OUT. Press.  
On OUTSIDE, pin front edge of ties to band at position indicated on pattern (over ruffle for VIEW B), having seamed edge of ties toward center back. Baste.



NOTE: Ruffle will not be shown in the following illustrations.

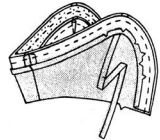
**BAND FACING**

Stitch center back seam in band facing.



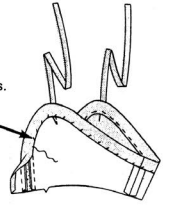
Stay-stitch inward curves on long NOTCHED edge of band facing, by stitching 1/2" (1.3cm) from raw edge. Clip to stay-stitching.  
Press under 5/8" (1.5cm) on long NOTCHED edge of band facing.

With RIGHT SIDES TOGETHER, pin facing to band, matching center back seams. Stitch along front and upper edges.



GRADE seam allowances. Clip curves.

Turn facing to INSIDE. Press. Hem edge over seam.



**3. WAISTBAND**

Baste interfacing to WRONG SIDE of NOTCHED edge of waistband. Sew to fold line.



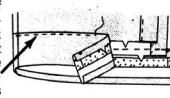
Stitch center seam in waistband. Cut interfacing close to stitching.

Stitch NOTCHED edge of waistband 1/2" (1.3cm) from raw edge. Cut interfacing close to stitching.

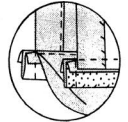


Press under 5/8" (1.5cm) on long edges of waistband.

Pin waistband to lower edge of TOP, RIGHT SIDES UP, matching notches and center back seams, having circles at front edges and pressed under edge along seam line. Stitch waistband in place close to edge, as illustrated.

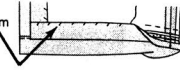


Fold waistband on fold line, RIGHT SIDES TOGETHER. Stitch ends.



Cut corners diagonally. GRADE seam allowances.

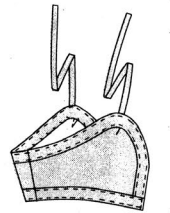
Turn RIGHT SIDE OUT. Hem edge over seam. Press.



**4. FINISHING**

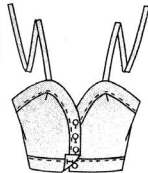
**TOP-STITCHING**

If desired, top-stitch band and waistband close to finished edges.



**BUTTONHOLES AND BUTTONS**

Make worked buttonholes in RIGHT band and RIGHT end of waistband at positions indicated on pattern.

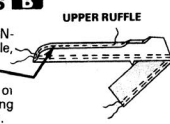


Lap RIGHT front over left, matching center fronts. Mark and sew buttons under buttonholes.

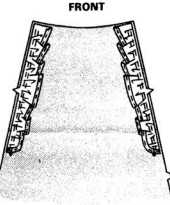
**SKIRT** **VIEW A-B**

**1. UPPER RUFFLES** **VIEW B**

NARROW HEM long UN-NOTCHED edge of upper ruffle, taking a 3/8" (1cm) seam.



Gather long NOTCHED edge of upper ruffle by machine-basting along lines indicated on pattern.

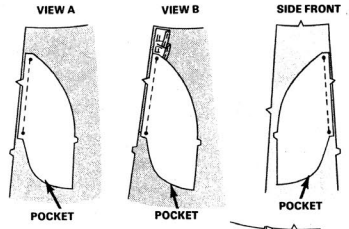


With RIGHT SIDES TOGETHER, pin upper ruffles to side edges of front, matching notches and ruffle circle to lower circles on front, having upper edges even. Baste, adjusting gathers to fit.

**2. POCKETS, SEAMS AND ZIPPER**

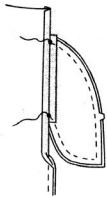
**POCKETS AND SEAMS**

With RIGHT SIDES TOGETHER, stitch pockets to front (over ruffles for VIEW B) and side fronts, matching notches and circles. Press seams toward pockets.

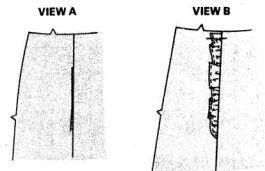


Pin side front to front, RIGHT SIDES TOGETHER, matching notches and circles. Stitch, leaving free between circles, stitching close to previous seams.

With RIGHT SIDES TOGETHER, pin pockets together, matching notches and keeping front and side front seam allowances free. (Keep ruffle free for VIEW B.) Stitch. Turn pockets toward front.



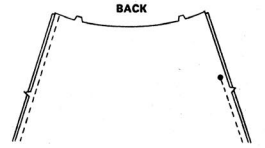
For VIEW B, turn upper ruffle toward side front. Hand-baste to upper edge. (Upper ruffle will not be shown in the following illustrations.)



**ZIPPER**

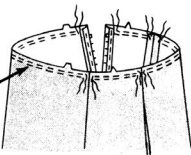
Follow instructions on zipper package for lapped application.

Stitch back to side fronts at sides, leaving LEFT seam open above circle.

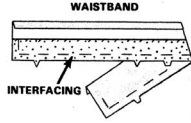


**3. WAISTBAND**

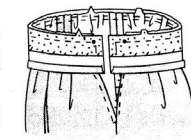
Gather upper edge of skirt by machine-basting along lines indicated on pattern, breaking stitching at seams.



Press under 5/8" (1.5cm) on UN-NOTCHED edge of waistband.



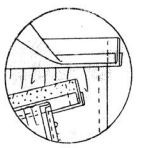
Baste interfacing to WRONG SIDE of NOTCHED edge of waistband. Sew to fold line.



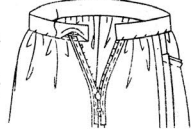
Pin waistband to skirt, RIGHT SIDES TOGETHER, matching notches and circles to side opening edges. Baste, adjusting gathers to fit. Stitch.

GRADE seam allowances: see SEWING TERMS. Press seam toward waistband.

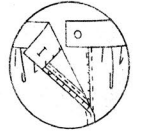
Fold waistband on fold line, RIGHT SIDES TOGETHER. Stitch ends.



Cut corners diagonally. GRADE seam allowances.



Turn RIGHT SIDE OUT. Hem edge over seam. Press.



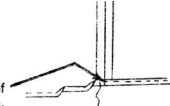
Make a worked buttonhole in front end of waistband at position indicated on pattern.

Sew a button to back end of waistband at position indicated on pattern.

**4. FINISHING**

**HEM** **VIEW A**

NARROW HEM lower edge of skirt, taking a 5/8" (1.5cm) seam.



**LOWER RUFFLE** **VIEW B**

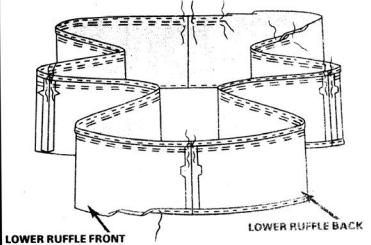
Stitch center front seam in lower ruffle front.  
Stitch center back seam in lower ruffle back.

Stitch lower ruffle front to lower ruffle back at sides.

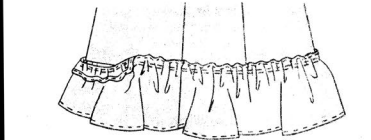
NARROW HEM lower edge of ruffle, taking a 5/8" (1.5cm) seam.

NARROW HEM upper edge of ruffle, taking a 3/8" (1cm) seam.

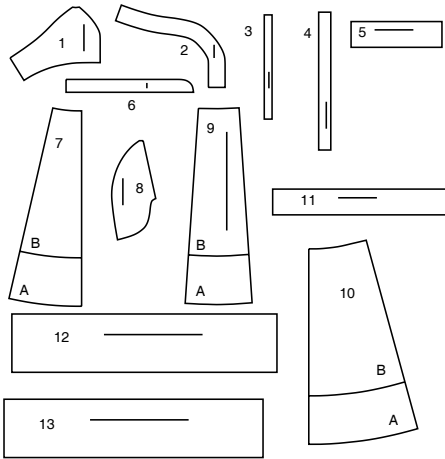
Gather upper edge of ruffle by machine-basting along lines indicated on pattern, breaking stitching at seams.



With RIGHT SIDES UP, pin ruffle to lower edge of skirt, having lower gathering line 5/8" (1.5cm) over lower edge of skirt, matching center fronts, center backs and side seams. Adjust gathers to fit. Baste. Stitch ruffle in place 5/8" (1.5cm) from upper edge.



SUPPLEMENTAL CUTTING LAYOUTS



- 1 TOP
- 2 BAND
- 3 RUFFLE
- 4 TIE
- 5 WAISTBAND
- 6 UPPER RUFFLE - B
- 7 SKIRT FRONT
- 8 POCKET
- 9 SKIRT SIDE FRONT
- 10 SKIRT BACK
- 11 WAISTBAND
- 12 LOWER RUFFLE FRONT - B
- 13 LOWER RUFFLE BACK - B

PATTERN MARKINGS

**GRAINLINE:** Place on straight grain of fabric, parallel to selvage or fold.

**FOLDLINE:** Place line on fold of fabric.

**BUTTONHOLE MARKING:** Indicates exact length and placement of buttonholes.

**BUTTON MARKING:** Indicates button placement.

**NOTCHES AND SYMBOLS:** For matching seams and construction details.

Indicates the Bustline, Waistline, Hip and/or Biceps. Measurements refer to circumference of Finished Garment (Body Measurement + Wearing Ease + Design Ease). Adjust pattern if necessary. The measurement excludes pleats, tucks, darts and seam allowances.

**SEAM ALLOWANCE:** 5/8" (1.5cm) included unless otherwise indicated, but not printed on tissue.

ADJUST IF NECESSARY

Lengthen or Shorten at adjustment lines (==) or where indicated on pattern. If substantial length is added, you may need to purchase additional fabric.

**TO SHORTEN:** Crease along adjustment line. Make a fold half the amount needed. Tape in place.

**TO LENGTHEN:** Slash between adjustment lines. Spread amount as needed, keeping edges parallel. Tape over paper.

When Alteration lines are not on tissue, lengthen or shorten at lower edge.

CUTTING AND MARKING

**SHRINK FABRIC** if not labeled pre-shrunk. Press.

**CIRCLE LAYOUT** for View, Size, Fabric Width.

Use **WITH NAP** layout for fabrics with one-way designs, nap, pile or surface shading. Because most knits have surface shading, a with nap layout is used.

For **DOUBLE THICKNESS (WITH FOLD)** - fold fabric with right sides together.

**\* DOUBLE THICKNESS (WITHOUT FOLD)** - For fabrics with nap, fold fabric crosswise, right sides together. Mark as shown. Cut along crosswise fold of fabric (A). Turn upper layer 180° so arrows go in same direction and place over lower layer, right sides together (B).

For **SINGLE THICKNESS** - place fabric right side up. (For Fur Pile fabrics, place pile side down.)

★ Cut other pieces first, allowing enough fabric to cut this piece. Open fabric. For "Cut 1" pieces, cut piece once on single layer of fabric with piece face up on right side of fabric.

Pattern may have cutting lines for several sizes. Select the proper cutting line or pattern pieces for your size.

Before **CUTTING** place all pieces on fabric according to layout. Pin. (Layouts show approximate position of pattern pieces; position may vary according to your pattern size.) Cut **ACCURATELY**, cutting notches outward.

Before removing pattern, **TRANSFER MARKINGS** and lines of construction to Wrong Side of fabric, using the Pin and Chalk Pencil method or Tracing Paper and Dressmaker Wheel. Markings needed on right side of fabric should be thread traced.

**NOTE:** Broken-line boxes (a| b| c|) in layouts represent pieces cut by measurements provided.

CUTTING LAYOUTS

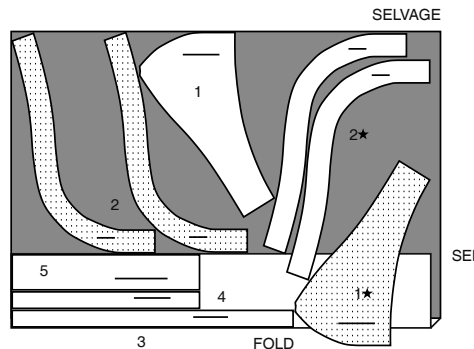
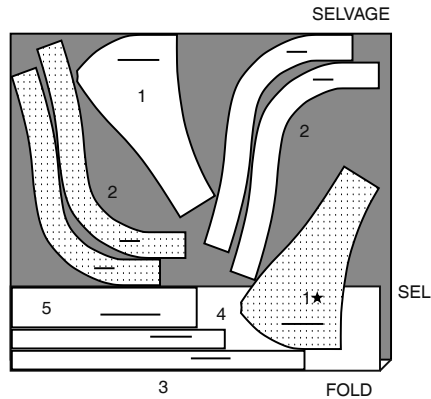
TOP A,B

USE PIECES 1 2 3 4 5

NOTE: PIECE 3 FOR VIEW B ONLY

45" (115CM) \*  
SIZES 8 10 12 14 16 18 20

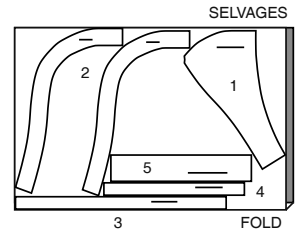
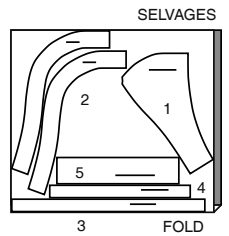
45" (115CM) \*  
SIZES 22 24 26



RIGHT SIDE OF PATTERN	WRONG SIDE OF PATTERN	RIGHT SIDE OF FABRIC	WRONG SIDE OF FABRIC

60" (150CM) \*  
SIZES 8 10 12 14 16 18 20

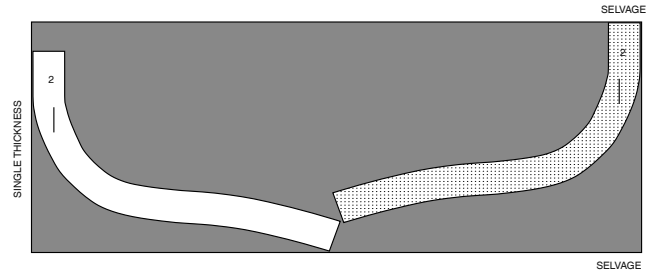
60" (150CM) \*  
SIZES 22 24 26



INTERFACING A,B (FOR TOP)

USE PIECE 2

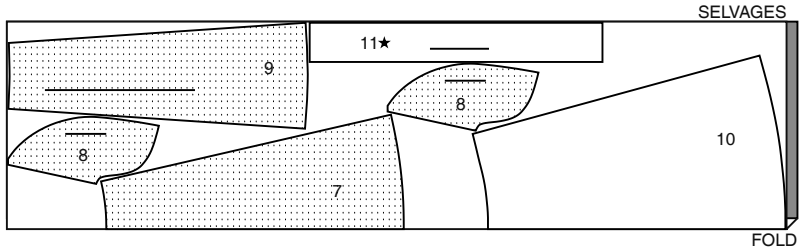
20" (51CM)  
ALL SIZES



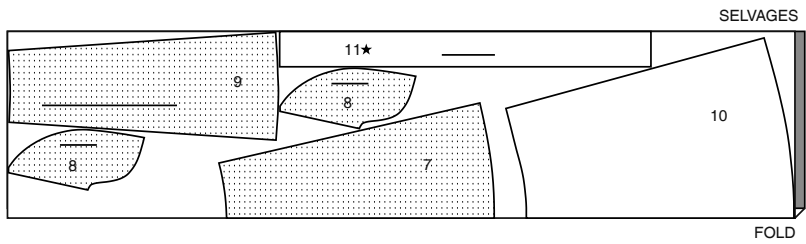
**SKIRT A**

USE PIECES 7 8 9 10 11

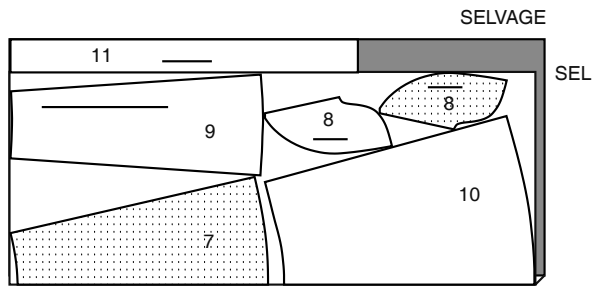
45" (115CM) \*  
SIZES 8 10 12 14



45" (115CM) \*  
SIZES 16 18 20 22 24 26



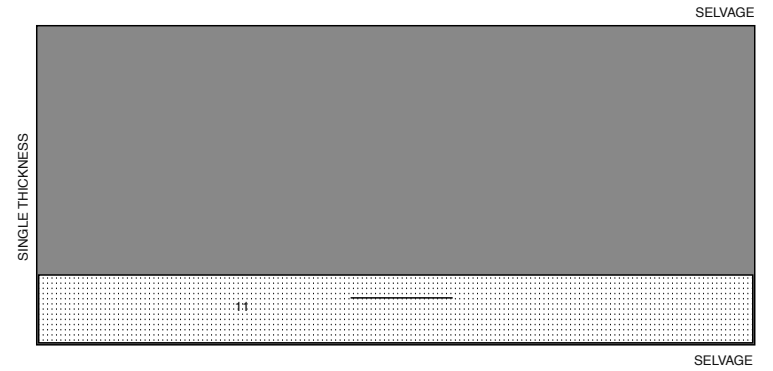
60" (150CM) \*  
ALL SIZES



**INTERFACING A,B (FOR TOP)**

USE PIECE 11

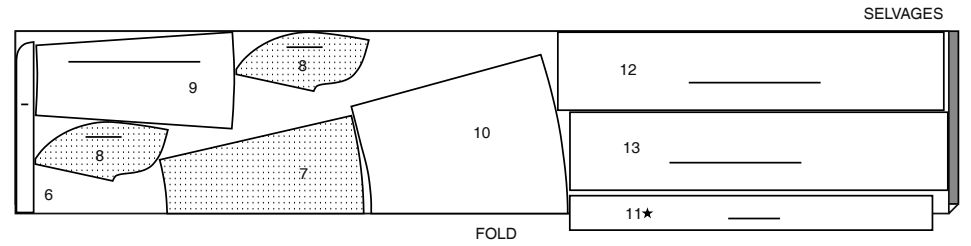
20" (51CM)  
ALL SIZES



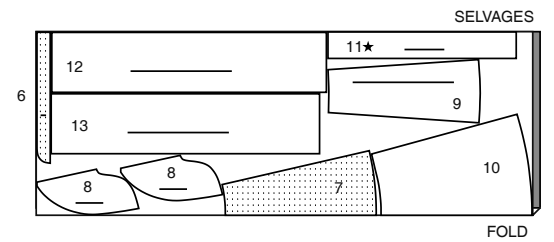
**SKIRT B**

USE PIECES 6 7 8 9 10 11 12 13

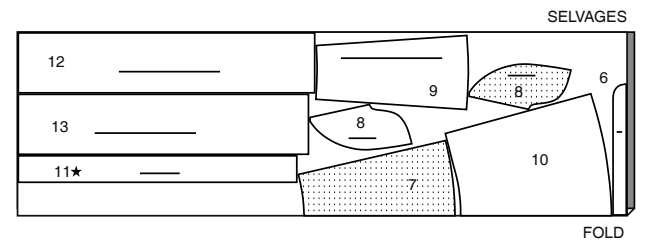
45" (115CM) \*  
ALL SIZES



60" (150CM) \*  
SIZES 8 10 12



60" (150CM) \*  
SIZES 14 16 18 20 22 24 26





# Congrats!

You've completed your sewing adventure

---

**SHARE  
YOUR** LOOK



Post your pattern and tag us  
[@simplicity\\_creative\\_group](#) and [#simplicitypatterns](#)  
for a chance to be featured on our social media.

Look for more PDF patterns at [simplicity.com](#)

Have a question or need help with your sewing project call us at  
1-800-782-0323

**McCall's**  
by **design**<sub>group</sub>

McCall's ©2023 a division of IG Design Group Americas Inc. • Atlanta, GA 30342 USA [www.thedesigngroup.com](#) • All Rights Reserved. [www.mccall.com](#) • Made in the U.S.A. Fabriqué aux États-Unis.  
To be used for individual private home use only and not for commercial or manufacturing purposes. • A usage privé seulement et non à des fins commerciales ou de production en série. • Para uso privado solamente, no se puede utilizar con propósitos de comercialización o de producción en serie.