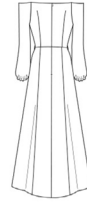
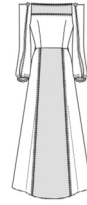


# McCall's®

M8424



A



B

Average  
Moins Facile  
Intermedio

## MISSES' COSTUME

**Suggested Fabrics:** A,B: Ponte, Satin, Shantung, Silk. **Contrast B:** Metallic Luxe Mesh. **Lining A,B:** Cotton/Cotton Blends. **Interfacing:** Lightweight Fusible.

**Notions:** A,B: One 22" (55cm) invisible zipper. **Also for A:** 1 3/4 yds. (1.6m) of 2 1/2" (6cm) flat lace trim, one 2" (5cm) decorative rhinestone brooch or button, 1 1/2 yds. (1.4m) of 3/8" (1cm) chain trim. **Also for B:** 4 1/2 yds. (3.8m) of 3/4" (2cm) metallic braid sequin trim, two 1" (2.5cm) decorative rhinestone brooches or buttons, two 3/8" (1cm) shank buttons (for sleeve), 7/8 yd. (0.8m) of 1/4" (6mm) elastic. **Belt B:** 1 1/2 yds. (1.2m) of 1 1/2" (4cm) metallic braid trim, one 1 1/2" (4cm) decorative rhinestone button, two hook and bar waistband closures.

Sizes	8	10	12	14	16	18	20	22	24	26	
Lining A,B	45**	5/8	5/8	5/8	5/8	3/4	3/4	3/4	3/4	3/4	Yds
Dress A	45**	4	4	4	4 1/2	4 1/2	4 1/2	4 1/2	4 1/2	5	Yds.
Interfacing A	20"	1/2	1/2	1/2	5/8	5/8	3/4	3/4	3/4	3/4	"

**Dress and Belt B**

45**	4 1/2	4 1/2	4 1/2	4 1/2	4 1/2	5 1/2	5 1/2	5 1/2	5 1/2	5 1/2	Yds.
------	-------	-------	-------	-------	-------	-------	-------	-------	-------	-------	------

**Contrast B (Skirt Front, Front Band, Sleeve front and back)**

45**	1 1/2	1 1/2	1 1/2	1 1/2	1 1/2	1 1/2	1 1/2	1 1/2	1 1/2	1 1/2	Yds.
------	-------	-------	-------	-------	-------	-------	-------	-------	-------	-------	------

**Interfacing B**

20"	3/8	3/8	3/8	3/8	3/8	3/8	3/8	1/2	1/2	5/8	"
-----	-----	-----	-----	-----	-----	-----	-----	-----	-----	-----	---

## FINISHED GARMENT MEASUREMENTS (Includes Design and Wearing Ease)

A,B Bust	34 1/2	35 1/2	37	39	41	43	45	47	49	51	Ins.
A,B Waist	25 1/2	26 1/2	28	30	32	34	36	38	40	42	"
A,B Hip	39	40	41 1/2	43 1/2	45 1/2	47 1/2	49 1/2	51 1/2	53 1/2	55 1/2	"
Width, lower edge											
Dress A,B	88 1/2	89 1/2	91	93	95	97	99	101	103	105	Ins.
Finished back length from base of neck											
Dress A,B	57 3/4	58	58 1/4	58 1/2	58 3/4	59	59 1/4	59 1/2	59 3/4	60	Ins.

## DÉGUISÉMENT POUR JEUNES FEMMES

**Tissus Conseillés:** A,B: Ponte, Satin, Shantung, Soie. **Contraste B:** Tissu filet métallique de luxe. **Doublure A,B:** Coton/Cotonnades. **Entoilage:** Thermocollant léger.

**Mercerie:** A,B: 1 fermeture à glissière invisible de 55cm. **Aussi pour A:** 1.6m de galon de dentelle plat de 6cm, 1 broche ou bouton fantaisie décoratif de 5cm, 1.4m de galon de chaîne de 1cm. **Aussi pour B:** 3.8m de galon tressé à paillettes métalliques de 2cm, 2 broches ou boutons fantaisie décoratifs de 2.5cm, 2 boutons à tige de 1cm (pour la manche), 0.8m d'élastique de 6mm. **Ceinture B:** 1.2m de galon tressé métallique de 4cm, 1 bouton fantaisie décoratif de 4cm, 2 fermetures à crochet pour ceinture.

Tailles	8	10	12	14	16	18	20	22	24	26	
Françaises	36	38	40	42	44	46	48	50	52	54	
Européen	34	36	38	40	42	44	46	48	50	52	
Doublure A,B	115cm*	0.6	0.6	0.6	0.6	0.7	0.7	0.7	0.8	0.8	m
Robe A	115cm*	3.7	3.7	3.7	3.8	3.8	4.3	4.3	4.3	4.6	m
Entoilage A	51cm	0.5	0.5	0.5	0.5	0.7	0.7	0.7	0.7	0.7	"

**Robe et ceinture B**

115cm*	4.0	4.0	4.2	4.2	4.3	5.2	5.2	5.2	5.2	5.3	m
--------	-----	-----	-----	-----	-----	-----	-----	-----	-----	-----	---

**Contraste B (Jupe devant, bande devant, manches devant et dos)**

115cm*	1.4	1.4	1.4	1.4	1.4	1.5	1.5	1.6	1.6	1.7	m
--------	-----	-----	-----	-----	-----	-----	-----	-----	-----	-----	---

**Entoilage B**

51cm	0.4	0.4	0.4	0.4	0.4	0.4	0.4	0.4	0.5	0.6	"
------	-----	-----	-----	-----	-----	-----	-----	-----	-----	-----	---

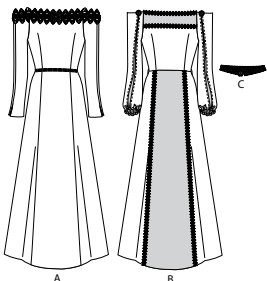
## MESURES DES VÊTEMENTS FINI (Motif et aisance de port compris)

A,B Poitrine	88	90	94	99	104	109	114	119	124	130	cm
A,B Taille	65	67	71	76	81	86	91	97	102	107	"
A,B Hanches	99	102	105	110	116	121	126	131	136	141	"
Largueur à l'ourlet											
Robe A,B	225	227	231	236	241	246	251	257	262	267	cm
Longueur finie – dos, votre nuque à l'ourlet											
Robe A,B	147	147	148	149	149	150	150	151	152	152	cm

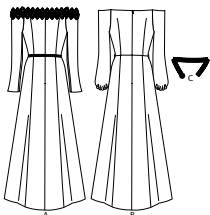
\*with nap \*\*without nap

\*avec sens \*\*sans sens

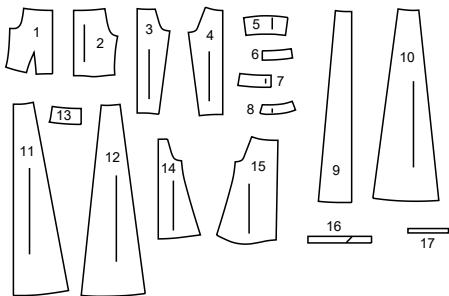
**FRONT**



**BACK**

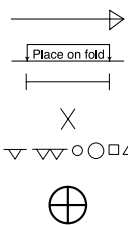


**17 PATTERN PIECES**



- 1 BODICE FRONT - A,B
- 2 BODICE BACK - A,B
- 3 SLEEVE FRONT - A
- 4 SLEEVE BACK - A
- 5 SLEEVE FACING - A
- 6 FRONT FACING - A,B
- 7 BACK FACING - A,B
- 8 UPPER SLEEVE FACING - A,B
- 9 SKIRT FRONT - A,B
- 10 SKIRT SIDE FRONT - A,B
- 11 SKIRT BACK - A,B
- 12 SKIRT SIDE BACK - A,B
- 13 FRONT BAND - B
- 14 SLEEVE FRONT - B
- 15 SLEEVE BACK - B
- 16 ARMHOLE FACING - B
- 17 GUIDE FOR ELASTIC - B

**PATTERN MARKINGS**



**GRAINLINE:** Place on straight grain of fabric, parallel to selvage or fold.  
**FOLDLINE:** Place line on fold of fabric.  
**BUTTONHOLE MARKING:** Indicates exact length and placement of buttonholes.  
**BUTTON MARKING:** Indicates button placement.  
**NOTCHES AND SYMBOLS:** For matching seams and construction details.  
 Indicates the Bustline, Waistline, Hip and/or Biceps. Measurements refer to circumference of Finished Garment (Body Measurement + Wearing Ease + Design Ease). Adjust pattern if necessary. The measurement excludes pleats, tucks, darts and seam allowances.  
**SEAM ALLOWANCE:** 5/8" (1.5cm) included unless otherwise indicated, but not printed on tissue.

**ADJUST IF NECESSARY**

Lengthen or Shorten at adjustment lines (≡) or where indicated on pattern. If substantial length is added, you may need to purchase additional fabric.  
**TO SHORTEN:** Crease along adjustment line. Make a fold half the amount needed. Tape in place.  
**TO LENGTHEN:** Slash between adjustment lines. Spread amount as needed, keeping edges parallel. Tape over paper.  
 When Alteration lines are not on tissue, lengthen or shorten at lower edge.

**CUTTING AND MARKING**

**SHRINK FABRIC** if not labeled pre-shrunk. Press.  
**CIRCLE LAYOUT** for View, Size, Fabric Width.  
 Use **WITH NAP** layout for fabrics with one-way design, nap, pile or surface shading. Because most knits have surface shading, a with nap layout is used.  
 For **DOUBLE THICKNESS (WITH FOLD)** - fold fabric with right sides together.  
**DOUBLE THICKNESS (WITHOUT FOLD)** - For fabrics with nap, fold fabric crosswise, right sides together. Mark as shown. Cut along crosswise fold of fabric (A). Turn upper layer 180° so arrows go in same direction and place over lower layer, right sides together (B).  
 For **SINGLE THICKNESS** - place fabric right side up. (For Fur Pile fabrics, place pile side down).  
 ★ Cut other pieces first, allowing enough fabric to cut this piece. Open fabric. For "Cut 1" pieces, cut piece once on single layer of fabric with piece face up on right side of fabric.  
 Pattern may have cutting lines for several sizes. Select the proper cutting line or pattern pieces for your size.  
 Before **CUTTING** place all pieces on fabric according to layout. Pin. (Layouts show approximate position of pattern pieces; position may vary according to your pattern size.) Cut **ACCURATELY**, cutting notches outward.  
 Before removing pattern, **TRANSFER MARKINGS** and lines of construction to Wrong Side of fabric, using the Pin and Chalk Pencil method or Tracing Paper and Dressmaker Wheel. Markings needed on right side of fabric should be thread traced.  
**NOTE:** Broken-line boxes (a| b| c|) in layouts represent pieces cut by measurements provided.

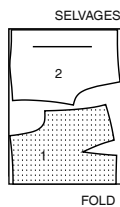
**CUTTING LAYOUTS**

RIGHT SIDE OF PATTERN	WRONG SIDE OF PATTERN	RIGHT SIDE OF FABRIC	WRONG SIDE OF FABRIC

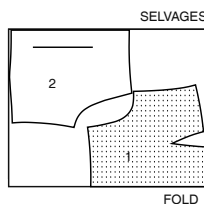
**LINING A,B**

use pieces: 1,2

45" (115 cm) without nap sizes 8 10 12 14



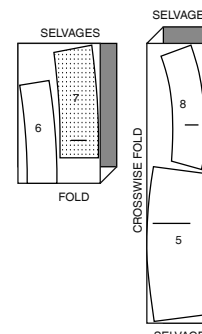
45" (115 cm) without nap sizes 16 18 20 22 24 26



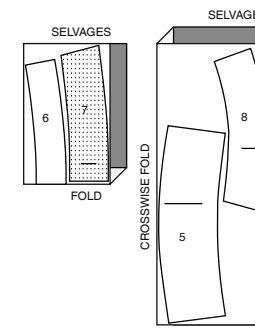
**INTERFACING A**

use pieces: 5 6 7 8

20" (51 cm) sizes 8 10 12 14



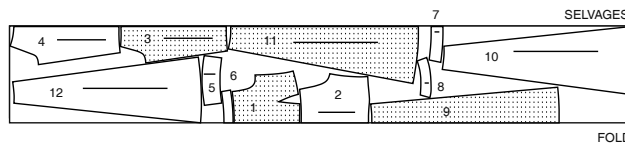
20" (51 cm) sizes 16 18 20 22 24 26



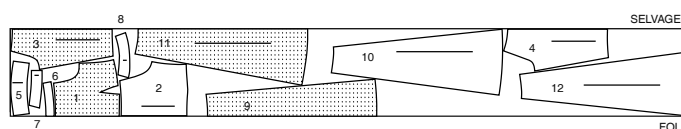
**DRESS A**

use pieces: 1 2 3 4 5 6 7 8 9 10 11 12

45" (115 cm) with nap sizes 8 10 12 14 16



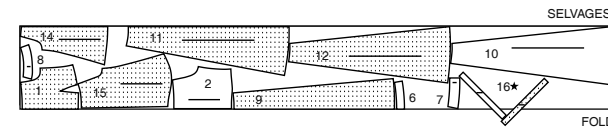
45" (115 cm) with nap sizes 18 20 22 24 26



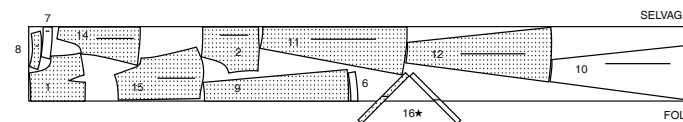
**DRESS AND BELT B**

use pieces: 1 2 6 7 8 9 10 11 12 14 15 16

45" (115 cm) with nap sizes 8 10 12 14 16



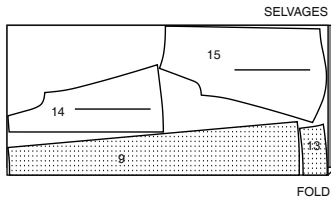
45" (115 cm) with nap sizes 18 20 22 24 26



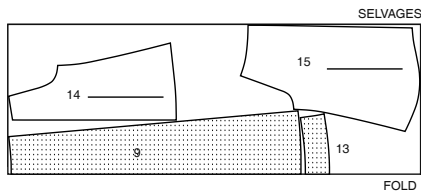
## CONTRAST B (FRONT BAND OVERLAY, CENTER FRONT SKIRT OVERLAY, SLEEVE LINING)

use pieces: 9 13 14 15

45" (115 cm)  
with nap  
sizes 8 10 12 14



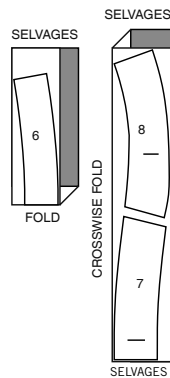
45" (115 cm)  
with nap  
sizes 16 18 20 22 24 26



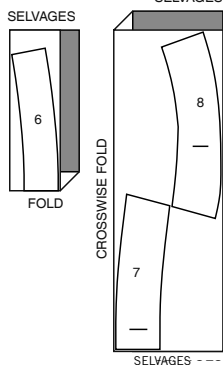
## INTERFACING B

use pieces: 6 7 8

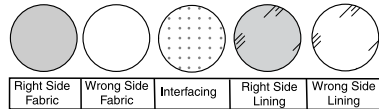
20" (51 cm)  
sizes 8 10 12 14 16 18 20 22



20" (51 cm)  
sizes 24 26

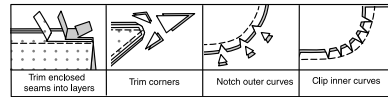


## SEWING INFORMATION FABRIC KEY



## SEAM ALLOWANCES

Use 5/8" (1.5cm) seam allowances unless otherwise indicated.



## PIN AND FIT

Pin or baste seams, **RIGHT SIDE TOGETHER**, matching notches. Fit garment before stitching major seams.

## PRESS

Press seam allowances flat; then open unless otherwise stated. Clip where necessary so they lie flat.

## GLOSSARY

Sewing methods in **BOLD TYPE** have Sewing Tutorial Video available. Scan QR CODE to watch videos:

**FLAT DART** – see **Darts**: "sewing flat dart" video

**FRENCH SEAM** – see **Seams**: "how to sew french seams" video

**INVISIBLE ZIPPER** – see **Zippers**: "sewing an invisible zipper" video

**SLIP STITCH** – see **Hand Stitching**: "how to slip stitch" video

**TACK** – see **Hand Stitching**: "how to tack" video

**TRIM SEAM** – see **Seams**: "how to trim, clip and layer seams" video

**UNDERSTITCH** – see **Machine Stitches**: "how to understitch" video

## SEWING TUTORIALS



Build your skills viewing short, easy-to-follow videos at [simplicity.com/sewingtutorials](http://simplicity.com/sewingtutorials)

Sewing terms appearing in **ITALIC TYPE** in Sewing Instructions are explained below.

**FINISH** – Stitch 1/4" (6mm) from raw edge and finish with one of the following: (1) Pink, OR (2) zigzag stitch, OR (3) Turn in along stitching and stitch close to fold OR (4) Overlock.

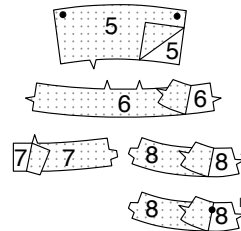
## SEWING DIRECTIONS

### DRESS A, B

**NOTE:** Under each sub-heading, the first View will be illustrated, unless otherwise indicated.

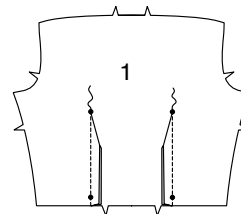
### INTERFACING

**1.** Pin interfacing to wrong side of **FRONT FACING** (6), **BACK FACING** (7), **SLEEVE UPPER FACING** (8), and additionally for **View A**, **SLEEVE FACING** (5). Fuse, following manufacturer's instructions.

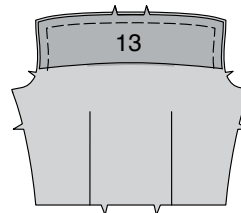


### BODICE AND SKIRT

**2.** Make **FLAT DART** seam in **BODICE FRONT** (1).

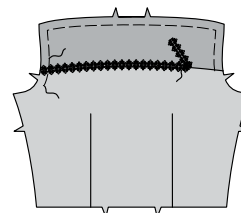


**3. FOR VIEW B** – Pin wrong side of **FRONT BAND** (13) to right side of bodice front at upper edge, matching notches. Baste upper and armhole edges.



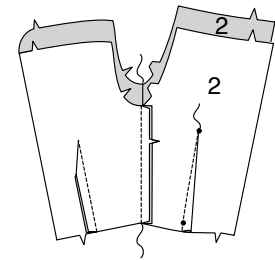
**4.** Cut a piece of 3/4" (2cm) trim the length of the lower edge of front band. Pin trim to lower edge centered over cut edge. Remove sequins or other heavy embellishments on trim within the seam allowance, if possible. Hand-sew in place, invisibly. Machine-baste at seam allowances.

**NOTE:** If trim is too heavily embellished and impossible to thin out enough to be basted to seam allowance, turn under ends, and apply in the same manner as trim along upper edge after dress is constructed, as directed in the following **FINISHING TRIMS B** section.

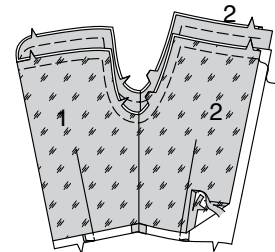


### CONTINUE AS FOLLOWS FOR BOTH VIEWS

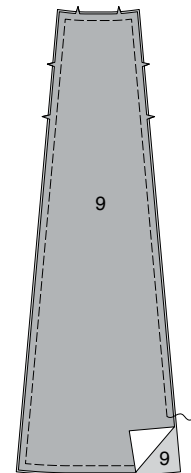
**5.** Make **FLAT DART** in **BODICE BACK** (2). Stitch bodice front to bodice back at side edges.



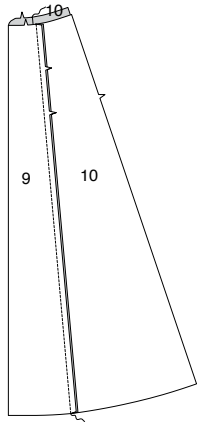
**6.** Stitch bodice front and back lining in the same manner as bodice. Press under 5/8" (1.5cm) on lower edge of bodice lining and 3/4" (2cm) on back opening edges. Trim to 1/4" (6mm). Pin bodice lining to bodice with "wrong" sides together, matching notches. Baste upper edge of front, and upper edge of back. Baste armhole edges together.



**7. FOR VIEW B** – Pin wrong side of **SKIRT FRONT** (9) contrast section to right side of skirt front fabric section, matching notches. Baste raw edges together.

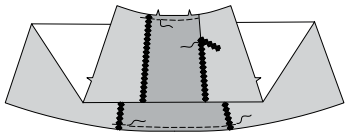


**8. FOR BOTH VIEWS** – Pin SKIRT FRONT (9) to SKIRT SIDE FRONT (10), matching notches. Stitch.



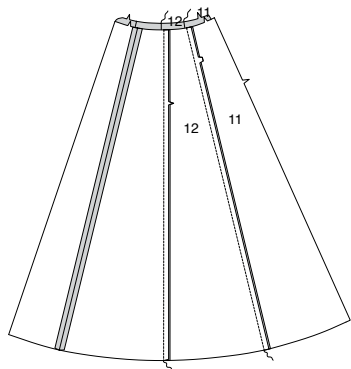
**9. FOR VIEW B** – Cut a piece of 3/4" (2cm) trim the length of the side front seam. Pin trim centered over seam. Remove sequins or other heavy embellishments to trim within the seam allowance, if possible. Hand-sew in place, invisibly. Machine-baste at seam allowances.

**NOTE:** If trim is too heavily embellished and impossible to thin out enough to be basted to seam allowance, turn under ends, and apply in the same manner as trim along upper edge after dress is constructed, as directed in the following **FINISHING TRIMS B** section.

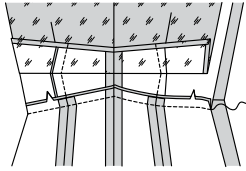


**CONTINUE AS FOLLOWS FOR BOTH VIEWS**

**10.** Pin SKIRT BACK (11) to SKIRT SIDE BACK (12) matching notches. Stitch. Stitch skirt front to skirt back at side edges.



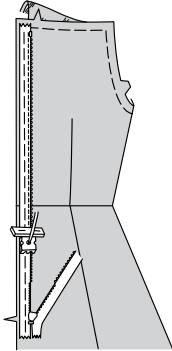
**11.** With right sides together and raw edges even, pin upper edge of skirt to lower edge of bodice, matching seams, and notches. Keeping lower edge of lining free. Stitch. Press seam toward bodice.



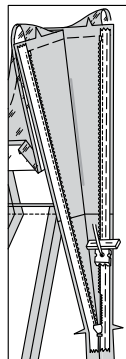
**ZIPPER**

**NOTE:** Stitch the invisible zipper using an invisible zipper foot.

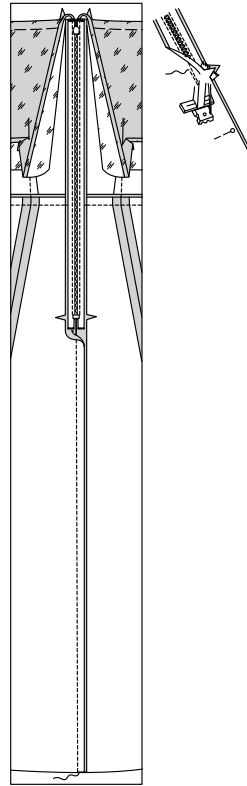
**12.** To apply an **INVISIBLE ZIPPER**, open the zipper and press the tape using a cool iron. On outside, pin right side of the zipper face down on the right side of the zipper opening, keeping lining free. Have the coil along the seam line, the tape within the seam allowance and the top stop 3/4" (2cm) below upper edge, as shown. Hand-baste along center of the tape. Position zipper foot at the top of the zipper with right groove of the foot over coil. Stitch along tape to the notch. Back-stitch to reinforce.



**13.** Pin the remaining half of the zipper to the left side of the zipper opening in same manner. Make sure the upper and lower edges of the dress are even. Hand-baste along the center of the tape. Position zipper foot at the top of the zipper with left groove over the coil. Stitch along tape to the notch. Back-stitch to reinforce.



**14.** Close zipper and check that it is invisible from the outside. Pull the free ends of the zipper tape away from the seam allowance. Pin remaining center back seam together below zipper. Position zipper foot all the way to the left so the needle goes down through the outer notch of the foot. Start stitching seam 1/4" (6mm) above lowest stitch and slightly to the left. Stitch seam for about 3" (7.5cm). Stitch remainder of seam using your regular presser foot.



**15.** If the zipper is longer than the opening, using a strong thread, hand-sew a few small stitches across ends of coils at end of opening. Trim away lower end of zipper tape to within 5/8" (1.5cm) of hand-stitches.

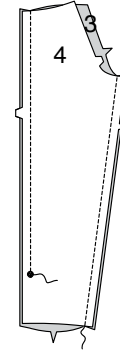


**16.** If you prefer, open out each seam allowance at end of zipper and stitch tape to seam allowance.

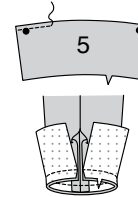


**SLEEVE A**

**17.** With right sides together and raw edges even, pin SLEEVE FRONT (3) to SLEEVE BACK (4) at underarm edges. Stitch. Stitch shoulder edges from upper edge to large dot, back-stitching at dart to reinforce the seam.



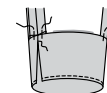
**18.** Finish unnotched edge of SLEEVE FACING (5). With right sides together and raw edges even, pin sleeve facing to sleeve, matching large dots and notches. Stitch lower edge. **TRIM SEAM.**



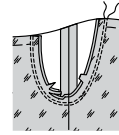
**19. UNDERSTITCH** the facing. Turn facing to outside. With right sides together and raw edges even stitch ends of facing to sleeve, breaking stitching at large dots. **TRIM SEAM.**



**20.** Turn facing inside; press, pressing under seam allowance on remaining opening edges. **SLIP STITCH** opening edges together. **TACK** facing to seam allowances of sleeve.

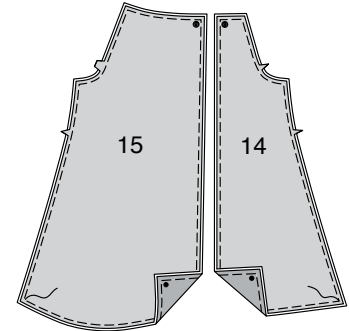


**21.** Turn sleeve right side out. Hold dress wrong side out with armhole toward you. With right sides together, pin sleeve to armhole edge, matching underarm seams and notches. Baste. Stitch. Stitch again 1/8" (3mm) from first stitching. Trim seam below notches close to stitching. Press only the seam allowance, shrinking out fullness.

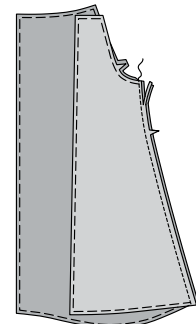


**SLEEVE B**

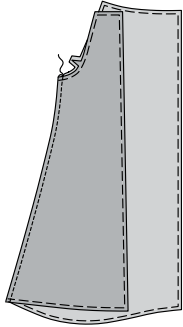
**22.** Pin contrast SLEEVE FRONT (14) and SLEEVE BACK (15) sections to corresponding fabric sections with "wrong" sides together, matching notches. Baste together 1/8" (3mm) from raw edges.



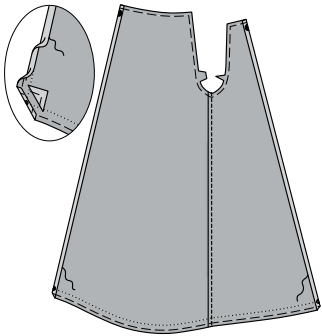
**23.** To stitch underarm edges in a **FRENCH SEAM**, pin sleeve front to sleeve back, matching notches with contrast sides together. Stitch in a 3/8" (1cm) seam. Trim seam allowance to 1/8" (3mm).



**24.** Fold fabric right sides together along stitching. Press. Stitch 1/4" (6mm) from the fold, encasing first seam. Press seam flat, then toward sleeve back.



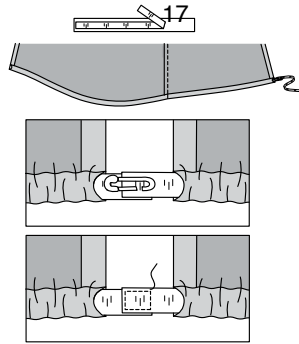
**25.** To hem slit edges of sleeve, and to form casing for lower edge, press under 5/8" (1.5cm) on lower edge of sleeve. Press under 5/8" (1.5cm) on slit opening edges. Open out corners. Turn under corners diagonally where crease lines cross; trim to 1/4" (6mm). Open out diagonal fold. Narrow hem slit edges, by folding on the crease, tucking under raw edges to meet crease. Press. **SLIP STITCH** in place. OR if you prefer, stitch close to inner pressed edge.



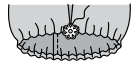
**26.** To form casing on lower edge, turn under raw edge 1/4" (6mm), fold under casing along previous crease. **SLIP STITCH** in place, or if you prefer stitch close to inner pressed edge, leaving ends open to insert elastic at small dots.



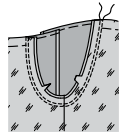
**27.** Cut a piece of elastic the length of the GUIDE FOR ELASTIC (17). Attach a safety pin to one end of elastic and insert elastic into open end of casing. Bring ends of elastic together. Stitch ends securely. Trim. Slide elastic through casing, moving stitched ends away from opening edges.



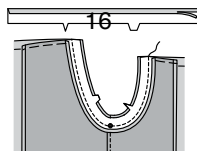
**28.** Sew 3/8" (1cm) shank button to sleeve casing at opening ends.



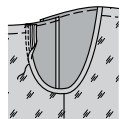
**29.** Turn sleeve right side out. Hold dress wrong side out with armhole toward you. With right sides together, pin sleeve to armhole edge, matching underarm seams and notches. Baste. Stitch. Stitch again 1/8" (3mm) from first stitching.



**30.** Press under 3/8" (1cm) on unnotched edge of ARMHOLE FACING (16). Trim to 1/4" (6mm). Pin facing to inside of sleeve, matching notches, placing small dot at underarm seam. Stitch. **TRIM SEAM.**

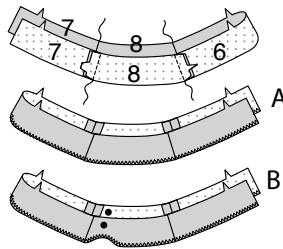


**31.** Turn facing to inside of bodice, press. **SLIP STITCH** in place.

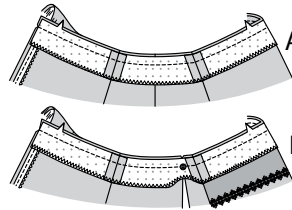


**CONTINUE AS FOLLOWS FOR BOTH VIEWS**

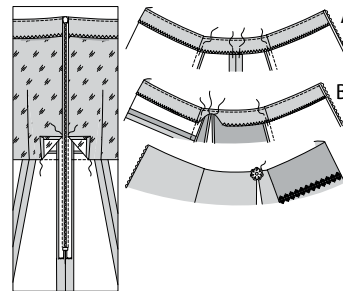
**32.** Stitch FRONT FACING (6) and BACK FACING (7) to UPPER SLEEVE FACING (8) at ends.  
**FOR VIEW A** - *FINISH* unmarked edges with a zigzag stitch.  
**FOR VIEW B** - Trim 1/2" (1.3cm) from lower edge of facing at the large dot tapering to nothing for 1-1/2" (3.8cm) each side of dot. *FINISH* unmarked edges with a zigzag stitch.



**33.** Pin upper edge of facing to bodice, matching seams and notches. Stitch. **TRIM SEAM.**



**34. UNDERSTITCH** lining/facing. Turn lining and back facing inside. Press under back edge of facing. On inside, **SLIP STITCH** pressed back edges of lining and facing to zipper tape, and lower edge of lining to seam at waist.  
**FOR VIEW A** - To keep the facing from rolling to outside, **TACK** it at the seam allowances.  
**FOR VIEW B** - Turn under upper sleeve facing at large dot 3/8" (1 cm). **SLIP STITCH** it to sleeve slit opening hems, invisibly. On outside, for each sleeve, sew a 1" (2.5cm) decorative button or broach to upper end of sleeve slits at the large dot.

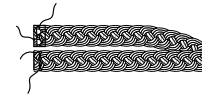


**BELT B**

**35.** Try on dress. Cut a piece of 1-1/2" (3.8 cm) metallic braid trim the length of wrapped waist, plus 1-1/4" (3.2 cm). Turn under 3/4" (2 cm) on each end. Stitch in place.  
**TIP:** If the braid trim chosen has a very loose mesh, sew a 3/4" (2 cm) wide remnant of fabric, ribbon, or twill tape over the ends to add support for the hooks, bars, and button.



**36.** On inside, sew two hook sections of fastener to right end of belt, with flat edges of hooks close to finished end. On outside, sew bar sections of fastener to left end of belt 3/8" (1 cm) from finished end.

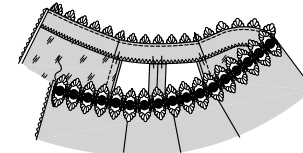


**37.** On outside, sew a 1-1/2" (3.8 cm) decorative button centered and lapping end of belt.

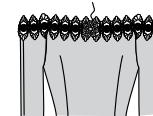


**FINISHING TRIMS A**

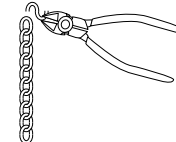
**38.** Cut a piece of 2-1/2" (2cm) trim the length of the upper edge of dress, plus 2" (5cm). Pin trim to upper edge, placing center of trim 3/4" (2 cm) below finished edge of dress, turning under ends 1" (2.5cm) at back opening edge. Hand-sew in place, invisibly.



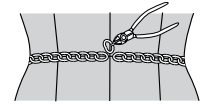
**39.** Hand-sew decorative button or broach to dress, centered over trim at center front of dress.



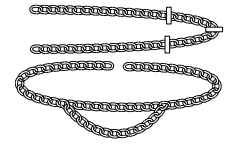
**40.** Using pliers, remove a piece of chain trim 10" (26cm) long, by opening one link.



**41.** Try on dress. Wrap waist with chain trim. Open the link where the chain trim meets at center back, using pliers. Remove that open link. Fold chain in half to find and mark center. Mark additional point on the chain 3-1/2" (9cm) each side of center.



**42.** To create a drape of chain across front of dress, hook open link of short chain piece to one of the outer marked links on the long chain, and close the link. Open the link at the other end of the short chain and hook to long chain on the remaining outer marked link. Close that link.

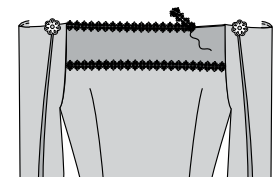


**43.** Wrap long chain round dress at waistline, matching centers. Hand tack each end to back of dress over waist seam 1/4" (6mm) from center back, as shown.



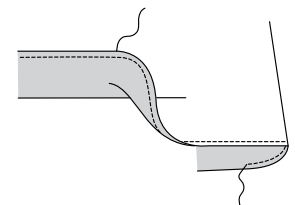
**FINISHING TRIMS B**

**44.** Cut a piece of 3/4" (2cm) trim the length of the upper edge of front band, plus 1" (2.5cm). Pin trim to upper edge centered over cut edge, turning under ends 1/2" (1.3cm). Hand-sew in place, invisibly.



**HEM**

**45. FINISH** lower edge of dress. If you prefer, use optional hem tape. Press up hem along marking. **SLIP STITCH** hem in place.





# Congrats!

You've completed your sewing adventure

---

## SHARE YOUR LOOK



Post your pattern and tag us  
**@simplicity\_creative\_group** and **#mccallspatterns**  
for a chance to be featured on our social media.

Look for more PDF patterns at **simplicity.com**

Have a question or need help with your sewing project call us at  
1-800-782-0323

**McCall's**  
by design...

McCall's ©2023 a division of IG Design Group Americas Inc. • Atlanta, GA 30342 USA www.thedesigngroup.com • All Rights Reserved. www.mccall.com • Made in the U.S.A. Fabriqué aux États-Unis.  
To be used for individual private home use only and not for commercial or manufacturing purposes. • A usage privé seulement et non à des fins commerciales ou de production en série. • Para uso privado solamente, no se puede utilizar con propósitos de comercialización o de producción en serie.