

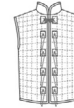
McCall's®

M8423

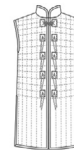
Easy
Facile



A



B



C

MEN'S COSTUME

Suggested Fabrics: A, B, C: Canvas, Gabardine, Linen, Muslin, Twill, Wool. **Contrasts B, C:** Heavyweight Suede, Leather/Leather Like. **Lining A, B, C:** Cotton/Cotton Blends, Linen, Muslin. **Batting:** Cotton or Polyester. **Interfacing A:** Lightweight Fusible.

Notions: A: One ball of 24-ply cotton butchers twine, twelve (2-part) ¼" (6mm) eyelets. B, C: One ball of 24-ply cotton butchers twine, two pkgs. of ½" (1.3cm) double fold bias tape, hole puncher orawl.

Sizes	34	36	38	40	42	44	46	48	50	52	
Top A	45"*	2¼	2¼	2¼	2¼	2¼	2¼	2¼	2¾	2¾	Yds.
Lining A	45"***	2½	2¼	2¼	2¼	2¼	2¼	2¼	2¼	2¾	"
Batting A	45"	1¾	1¾	1¾	1¾	1¾	1¾	1¾	1¾	1¾	"
Interfacing A	20"	½	½	½	½	½	½	¾	¾	¾	"
Vest B	45"*	1¾	1¾	1¾	1¾	1¾	1¾	2	2	2	Yds.
Lining B	45"***	1¾	1¾	1¾	1¾	1½	1½	1¾	1¾	1¾	"
Batting B	45"	1¾	1¾	1¾	1¾	1½	1½	1¾	1¾	1¾	"
Contrast B, C (Patches): 5" x 8" remnant											
Vest C	45"*	2½	2½	2¾	2¾	2¾	2¾	2¾	2¾	2¾	Yds.
Lining C	45"***	2¾	2½	2½	2½	2½	2¾	3	3	3	"
Batting C	45"	2½	2½	2½	2½	2½	2½	2½	2½	2½	"

NOTE: Please refer to the sewing instructions for FINISHED GARMENT MEASUREMENTS.

DÉGUISEMENT POUR HOMMES

Tissus Conseillés: A, B, C: Ganevas, Gabardine, Toile de lin, Mousseline, Twill, Laine. **Contrastes B, C:** Suédine de poids lourd, Cuir/Simili cuir. **Doubleure A, B, C:** Coton/Cotonnades, Toile de lin, Mousseline. **Ouatine:** Coton ou Polyester. **Entoilage A:** Thermocollant léger.

Mercerie: A: 1 boule de ficelle de boucher en coton à 24 brins, 12 œillets (2 parties) de 6mm. B, C: 1 boule de ficelle de boucher en coton à 24 brins, 2 paquets de ruban de biais double de 1.3cm, perforateur ou poinçon.

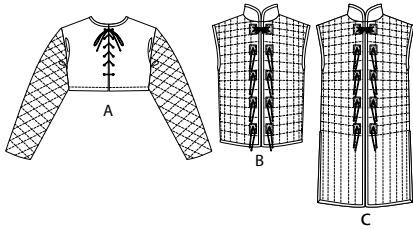
Tailles	34	36	38	40	42	44	46	48	50	52	
Haut A	115cm*	1.9	1.9	2.1	2.1	2.1	2.1	2.1	2.1	2.2	m
Doubleure A	115cm***	1.9	1.9	2.1	2.1	2.1	2.1	2.1	2.1	2.1	"
Ouatine A	115cm	1.5	1.5	1.5	1.5	1.6	1.6	1.6	1.6	1.6	"
Entoilage A	51cm	0.5	0.5	0.5	0.5	0.5	0.5	0.5	0.6	0.6	"
Gilet B	115cm*	1.6	1.6	1.6	1.6	1.7	1.7	1.7	1.8	1.8	m
Doubleure B	115cm**	1.0	1.1	1.1	1.1	1.4	1.4	1.4	1.5	1.5	"
Ouatine B	115cm	1.1	1.1	1.1	1.1	1.4	1.4	1.4	1.5	1.5	"
Contraste B, C (Pièces): coupon de 13cm x 21cm											
Vest C	115cm*	2.3	2.3	2.4	2.4	2.4	2.5	2.5	2.5	2.5	m
Doubleure C	115cm**	2.2	2.3	2.3	2.3	2.6	2.6	2.6	2.7	2.7	"
Ouatine C	115cm	1.9	1.9	1.9	1.9	2.3	2.3	2.3	2.3	2.3	"

NOTE: S'il vous plaît, reportez-vous aux instructions de couture pour les MESURES DU VÊTEMENT FINI.

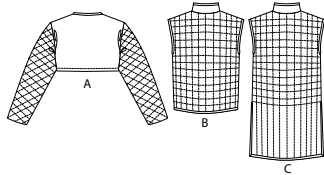
*with nap **without nap

*avec sens **sans sens

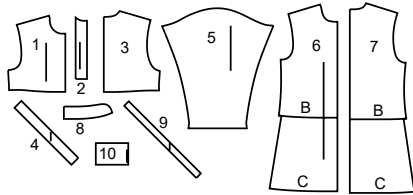
FRONT



BACK

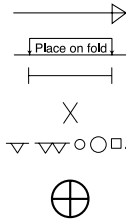


10 PATTERN PIECES



- 1 FRONT-A
- 2 FRONT INTERFACING-A
- 3 BACK-A
- 4 NECK BINDING-A
- 5 SLEEVE-A
- 6 FRONT-B,C
- 7 BACK-B,C
- 8 COLLAR-B,C
- 9 NECK FACING-B,C
- 10 PATCH-B,C

Sizes	34	36	38	40	42	44	46	48	50	52
FINISHED GARMENT MEASUREMENTS (Includes Design and Wearing Ease)										
A Chest	42½	44½	46½	48½	50½	52½	54½	56½	58½	60½
B,C Chest	43½	45½	47½	49½	51½	53½	55½	57½	59½	61½
B,C Waist	42½	44½	46½	48½	50½	52½	54½	56½	58½	60½
Width, lower edge										
Top A	41½	43½	45½	47½	49½	51½	53½	55½	57½	59½
Vest B	44½	46½	48½	50½	52½	54½	56½	58½	60½	62½
Finished back length from base of neck										
Top A	15½	15½	15½	16	16½	16½	16½	17	17½	17½
Vest B	24½	24½	24½	25	25½	25½	25½	26	26½	26½
Vest C	40%	41	41½	41½	41½	42	42½	42½	42½	43



PATTERN MARKINGS

GRAINLINE: Place on straight grain of fabric, parallel to selvage or fold.

FOLDLINE: Place line on fold of fabric.

BUTTONHOLE MARKING: Indicates exact length and placement of buttonholes.

BUTTON MARKING: Indicates button placement.

NOTCHES AND SYMBOLS: For matching seams and construction details.

Indicates the Bustline, Waistline, Hip and/or Biceps. Measurements refer to circumference of Finished Garment (Body Measurement + Wearing Ease + Design Ease). Adjust pattern if necessary. The measurement excludes pleats, tucks, darts and seam allowances.

SEAM ALLOWANCE: 5/8" (1.5cm) included unless otherwise indicated, but not printed on tissue.

ADJUST IF NECESSARY

Lengthen or Shorten at adjustment lines (==) or where indicated on pattern. If substantial length is added, you may need to purchase additional fabric.

TO SHORTEN: Crease along adjustment line. Make a fold half the amount needed. Tape in place.

TO LENGTHEN: Slash between adjustment lines. Spread amount as needed, keeping edges parallel. Tape over paper.

When Alteration lines are not on tissue, lengthen or shorten at lower edge.

CUTTING AND MARKING

SHRINK FABRIC if not labeled pre-shrunk. Press.

CIRCLE LAYOUT for View, Size, Fabric Width.

Use **WITH NAP** layout for fabrics with one-way designs, nap, pile or surface shading. Because most knits have surface shading, a with nap layout is used.

For **DOUBLE THICKNESS (WITH FOLD)** - fold fabric with right sides together.

*** DOUBLE THICKNESS (WITHOUT FOLD)** - For fabrics with nap, fold fabric crosswise, right sides together. Mark as shown. Cut along crosswise fold of fabric (A). Turn upper layer 180° so arrows go in same direction and place over lower layer, right sides together (B).

For **SINGLE THICKNESS** - place fabric right side up. (For Fur Pile fabrics, place pile side down.)

★ Cut other pieces first, allowing enough fabric to cut this piece. Open fabric. For "Cut 1" pieces, cut piece once on single layer of fabric with piece face up on right side of fabric.

Pattern may have cutting lines for several sizes. Select the proper cutting line or pattern pieces for your size.

Before **CUTTING** place all pieces on fabric according to layout. Pin. (**Layouts show approximate position of pattern pieces; position may vary according to your pattern size.**) Cut **ACCURATELY**, cutting notches outward.

Before removing pattern, **TRANSFER MARKINGS** and lines of construction to Wrong Side of fabric, using the Pin and Chalk Pencil method or Tracing Paper and Dressmaker Wheel. Markings needed on right side of fabric should be thread traced.

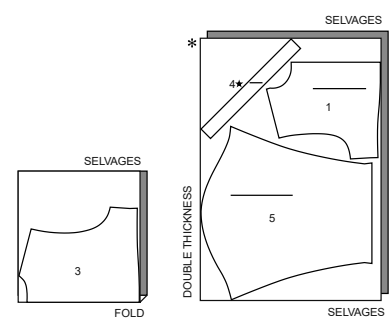
NOTE: Broken-line boxes (a! b! c!) in layouts represent pieces cut by measurements provided.

CUTTING LAYOUTS

TOP A

use pieces: 1 3 4 5

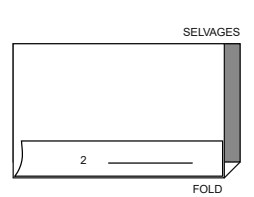
45" (115 cm)
with nap
all sizes



INTERFACING A

use piece: 2

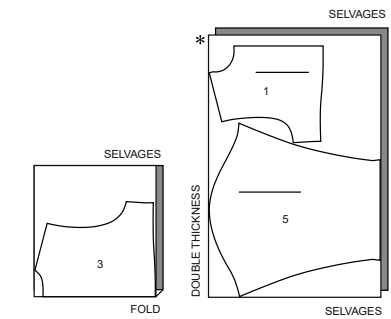
20" (51 cm)
all sizes



LINING A

use pieces: 1 3 5

45" (115 cm)
without nap
all sizes

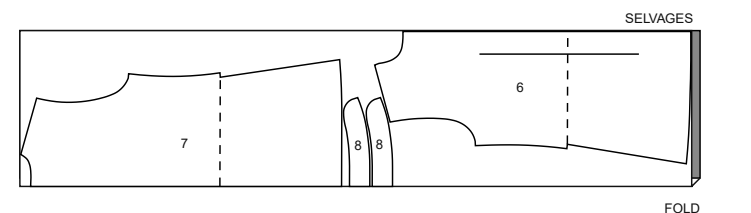


VEST B,C

use pieces: 6 7 8

NOTE: DASHED LINE SHOWN ON PATTERN PIECES IN CUTTING LAYOUTS INDICATES CUTTING LINE FOR SHORTER LENGTH

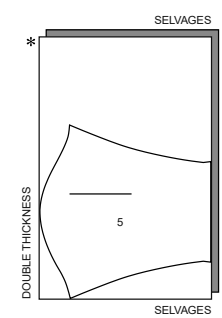
45" (115 cm)
with nap
all sizes



BATTING A

use piece: 5

45" (115 cm)
without nap
all sizes



CONTRAST B,C (PATCHES)

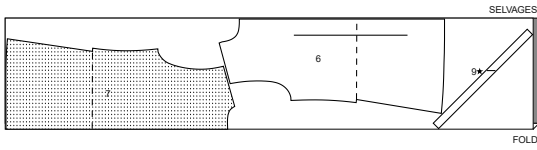
use piece: 10

Use 8"x 5" (20cm x 13cm) suede remnant.

LINING B,C

use pieces: 6 7 9

NOTE: DASHED LINE SHOWN ON PATTERN PIECES IN CUTTING LAYOUTS INDICATES CUTTING LINE FOR SHORTER LENGTH
45" (115 cm)
without nap
all sizes

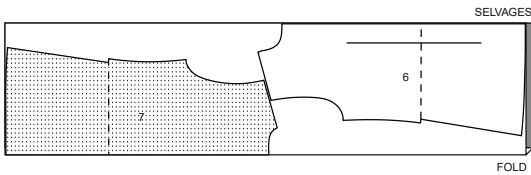


BATTING B,C

use pieces: 6 7

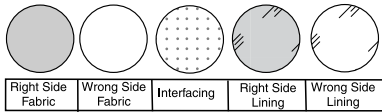
NOTE: DASHED LINE SHOWN ON PATTERN PIECES IN CUTTING LAYOUTS INDICATES CUTTING LINE FOR SHORTER LENGTH

45" (115 cm)
without nap
all sizes



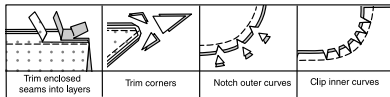
SEWING INFORMATION

FABRIC KEY



SEAM ALLOWANCES

Use 5/8" (1.5cm) seam allowances unless otherwise indicated.



PIN AND FIT

Pin or baste seams, **RIGHT SIDE TOGETHER**, matching notches. Fit garment before stitching major seams.

PRESS

Press seam allowances flat; then open unless otherwise stated. Clip where necessary so they lie flat.

GLOSSARY

Sewing methods in **BOLD TYPE** have Sewing Tutorial Video available. Scan QR CODE to watch videos:

FINISH- See **Seams**: "how to finish" video.

SLIP STITCH -See **Hand Stitching**: "how to slip stitch" video.

STAYSTITCH - See **Machine Stitches**: "how to do stay stitching" video.

STITCH IN THE DITCH - See **Machine Stitches**: "how to stitch in the ditch" video.

TRIM SEAM - See **Seams**: "how to trim, clip and layer seams" video.

UNDERSTITCH - See **Machine Stitches**: "how to understitch" video.

SEWING TUTORIALS



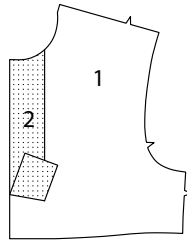
Build your skills viewing short, easy-to-follow videos at simplicity.com/sewingtutorials

SEWING DIRECTIONS

TOP A

Interfacing

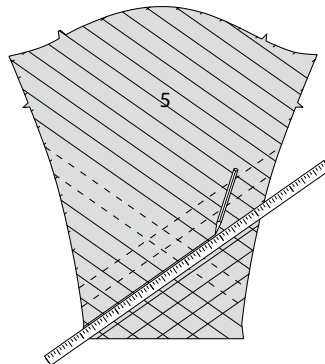
1. Pin **FRONT INTERFACING** (2) to wrong side of **FRONT** (1). Fuse, following manufacturer's instructions.



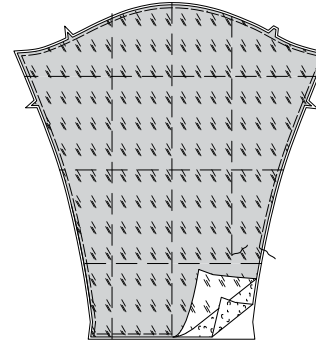
Quilting

2. For quilting **SLEEVE** (5), using a yardstick and chalk or your favorite washable marking tool, mark stitching lines for quilting in both directions on outside of fabric. (Always make a test on your fabric to be sure marks are completely removable). Measure the width between the stitching lines. Then mark new lines parallel to stitching lines across length and width of the sleeve, spacing them the measured width apart.

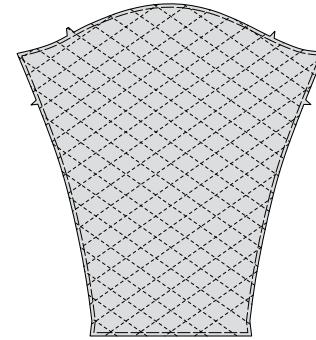
TIP: A quilting foot can be used instead of marking all stitching lines. Set the guide bar on the foot to the desired spacing between rows.



3. Place batting to wrong side of sleeve, having raw edges even. Place lining over the sleeve with wrong sides together. Hand-baste layers together across length and width of front and back. Machine-baste raw edges together, 1/4" (6mm) from cut edge.

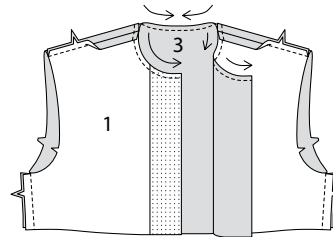


4. Using matching or contrasting thread, stitch along each marked line to form the quilting pattern. Remove hand-basting.

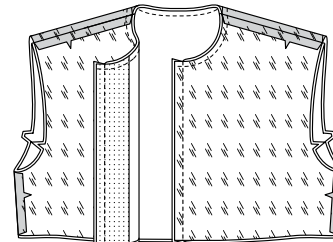


Front and Back

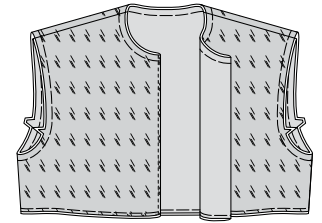
5. **STAYSTITCH** neck edges of **FRONT** (1) and **BACK** (3) in the direction of the arrows, 3/8" (1cm) from raw edge. Stitch front to back at side and shoulder edges.



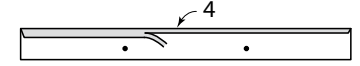
6. Stitch front and back lining in the same manner as top. Pin lining to top with right sides together, matching seams. Stitch center front edge. **TRIM SEAM**.



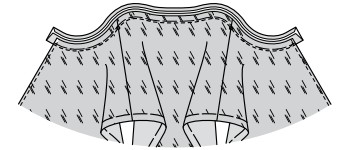
7. **UNDERSTITCH** the lining. Turn lining; press. Baste armhole and neck edges together 1/2" (1.3cm) from cut edges. Baste lower edges together 1/4" (6mm) from cut edges.



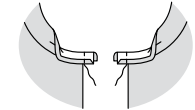
8. Press under 1/2" (1.3cm) on unmarked edge of neck binding (4). Trim to 1/4" (6mm).



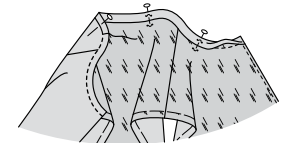
9. On outside, pin binding to neck edge, matching centers and placing small dots at shoulder seams. Stitch, stretching binding to fit. **TRIM SEAM**. Press binding out; pressing seam toward binding.



10. Turn ends of binding to outside, folding binding in half. Stitch across ends. **TRIM SEAM**.

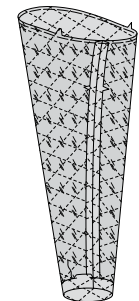


11. Turn binding to inside so that it encases the raw edge and just covers the stitching. Pin pressed edge of binding over seam, placing pins on outside, stretching the binding to fit. On outside, **STITCH IN THE DITCH** of the seam, catching in pressed edge of binding on the inside, OR if you prefer, **SLIP STITCH** in place.

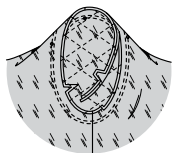


Sleeve

12. Stitch underarm seam of **SLEEVE** (5). Press up 1-1/4" (3.2 cm) hem allowance on lower edge of sleeve. Turn under raw edge 1/4" (6mm). **SLIP STITCH** hem in place.

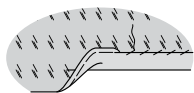


13. Turn sleeve right side out. Hold top wrong side out with armhole toward you. With right sides together, pin sleeve to armhole edge with center small dot at shoulder seam, matching underarm seams, notches and remaining small dots. Baste. Stitch. Stitch again 1/8" (3mm) from first stitching. **TRIM SEAM** close to stitching. Press only the seam allowance, shrinking out fullness.



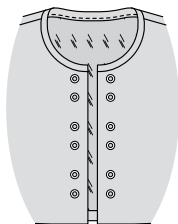
Finishing

14. Press up 1-1/4" (3.2 cm) hem allowance on lower edge of top. Turn under raw edge 1/4" (6mm). **SLIP STITCH** hem in place.

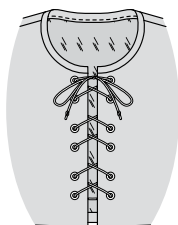


15. Apply grommets to front at small dots, using a grommet applying tool, or by hand.

TIPS FOR APPLYING GROMMETS: Create grommet openings, using an awl, or cut out small holes using embroidery scissors. Set grommets on a hard surface. You can use a scrap of hardwood or a jeweler's block. Hit the grommet setter with a rawhide or rubber mallet to ensure even setting. Practice applying grommets on a fabric remnant before applying to garment.



16. Cut a piece of butcher's twine 56" (142 cm) long. Lace ends through grommets, from lower end to top. Knot ends.

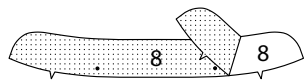


VEST B, C

NOTE: Under each sub-heading, the first View will be illustrated, unless otherwise indicated.

Interfacing

1. Pin interfacing to wrong side of COLLAR (8). Fuse, following manufacturer's instructions.

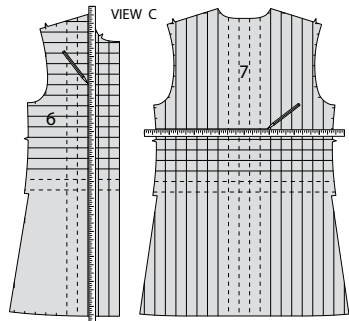
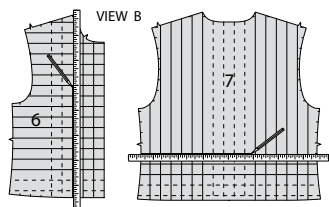


Quilting

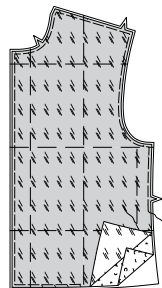
2. For quilting FRONT (6) and BACK (7), using a yardstick and chalk or your favorite washable marking tool, mark stitching lines for quilting in both directions on outside of fabric. (Always make a test on your fabric to be sure marks are completely removable). Measure the width between the stitching lines. Then mark new lines parallel to stitching lines across length and width of the front and back, spacing them the measured width apart.

NOTE FOR VIEW B: Vertical stitching lines cover the entire length of front and back sections. Horizontal lines end at the lowest line given on the pattern.

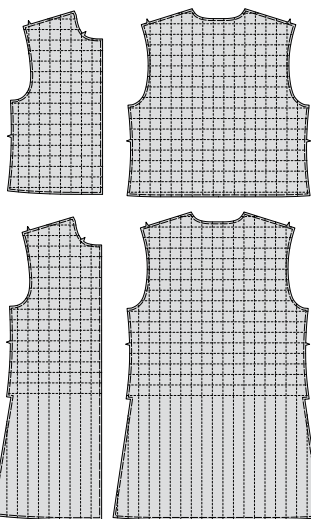
TIP: A quilting foot can be used instead of marking all stitching lines. Set the guide bar on the foot to the desired spacing between rows.



3. Place padding to wrong side of front and back sections, having raw edges even. Place lining over the front and back sections with wrong sides together. Hand-baste layers together across length and width of front and back. Machine-baste raw edges together, 1/4" (6mm) from cut edge.



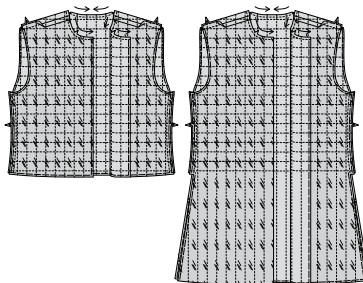
4. Using matching or contrasting thread, stitch along each marked line to form the quilting pattern. Remove hand-basting.



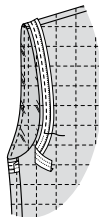
Front and Back

5. **STAYSTITCH** neck edges of front and back in the direction of the arrows, 3/8" (1cm) from raw edge. Stitch front to back at side and shoulder edges.

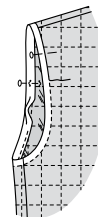
NOTE: One edge of bias tape is wider than the other. The wider side is to be used on the inside so that when the binding is stitched in place from the outside, the inner edge is sure to be caught in the stitching.



6. Open out narrow edge of double fold bias tape. With right sides together, pin tape to armhole edge having crease 3/8" (1cm) from raw edge, turning under and lapping one end at side seam. Stitch. **TRIM SEAM.**

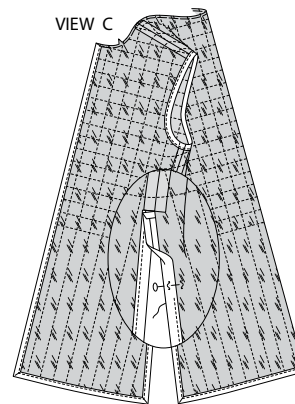


7. Turn tape to inside encasing the raw edge; press. Pin inner pressed edge of tape over seam, placing pins on outside. On outside, **STITCH IN THE DITCH** of the seam, catching in pressed edge of binding on the inside, OR if you prefer, **SLIP STITCH** in place.

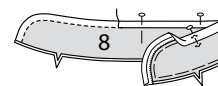


8. Apply binding to front and lower edges of vest, (and side edges for **View C**) in the same manner, folding out fullness at corners, (and turning under raw edge of binding at upper end of side edges for **View C**).

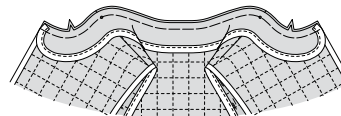
VIEW C



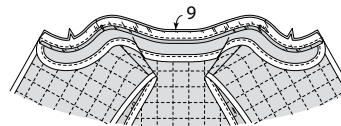
9. Pin COLLAR (8) to collar facing with wrong sides together. Baste 1/4" (6mm) from cut edge. Apply binding to unnotched edge of collar in the same manner as armhole, omitting lapping.



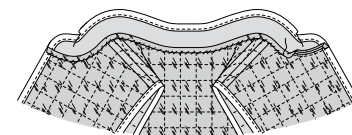
10. With right sides together, pin collar to vest at neck edge, matching notches, and placing small dots at shoulder seams. Baste.



11. Press under 3/8" (1cm) on unnotched edge of NECK FACING (9). Pin neck facing to vest (over collar), matching notches, and placing small dots at shoulder seams. Stitch. **TRIM SEAM.**

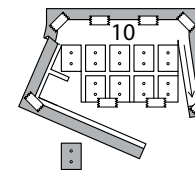


12. Press out collar; pressing seam and facing toward vest. Turn ends of facing under seam allowance. **SLIP STITCH** pressed edge of facing to vest, invisibly.



Finishing

13. Use tape or small binder clips to hold PATCH (10) to contrast leather or leather-like piece. Using a utility knife or scissors, cut out patches. Transfer markings.



14. Using an awl or leather hole punch, make holes in patches at small dots.

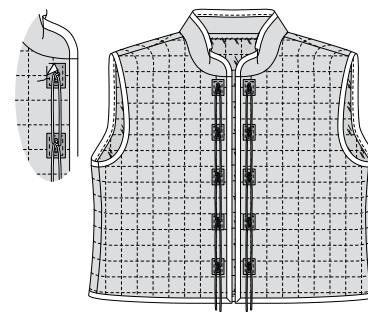


15. Cut 10 pieces of butcher's twine 12" (31cm) long. Thread a piece of twine through holes in each patch bringing ends together on outside, and knot at center of patch.



16. On outside, place patches to front along broken lines. Tape in place. Stitch 1/8" (3mm) from edges of patch. If you prefer, knot ends of twine at the length desired, and trim if necessary.

TIP: For hand-sewing, use a leather needle and thimble. For machine-sewing, use medium but balanced tension, 10 to 12 stitches per inch (2.5cm), size 11/12 leather needle, and 100% polyester or polyester core thread.





Congrats!

You've completed your sewing adventure

SHARE YOUR LOOK



Post your pattern and tag us
@simplicity_creative_group and **#mccallspatterns**
for a chance to be featured on our social media.

Look for more PDF patterns at **simplicity.com**

Have a question or need help with your sewing project call us at
1-800-782-0323

McCall's
by design...