



LAURA ASHLEY  
SINCE 1953

Manufactured and distributed by IG Design Group Americas Inc. under license from Laura Ashley Inc. © & © 2023 Laura Ashley Brands. All rights reserved.



Average

### CHILDREN'S DRESS WITH SLEEVE VARIATIONS AND HEADBAND

**Suggested Fabrics:** Gingham, Lawn, Lightweight Cotton Blends, Seersucker.

**Notions:** **A, B, C:** Elastic thread, one 16" (41cm) invisible zipper, one pkg. of ½" (1.3cm) single fold bias tape. **Also for B:** ¾ yd. (0.7m) of ¾" (1cm) elastic. **D:** 5" (13cm) length of 1" (2.5cm) elastic.

**Sizes** 3 4 5 6 7 8

#### BODY MEASUREMENTS: Select pattern size based on body measurements

	3	4	5	6	7	8	
<b>Chest/ Bust</b>	22	23	24	25	26	27	Ins.
<b>Waist</b>	20½	21	21½	22	23	23½	"
<b>Hip</b>	—	24	25	26	27	28	"
<b>Back-neck to waist</b>	9	9½	10	10½	11½	12	"
<b>Dress A</b>	45** 1¾	1¾	2	2½	2¼	2¼	Yds.
	60** 1½	1½	1½	1½	1¾	1¾	"
<b>Dress B</b>	45** 2	2½	2½	2¼	2¾	2½	Yds.
	60** 1½	1½	1¾	1¾	1¾	1¾	"
<b>Dress C</b>	45** 1¾	2	2½	2¼	2¾	2¾	Yds.
	60** 1½	1½	1½	1¾	1¾	1¾	"

**Headband D (one size)** - 45, 60\*\*, ¾ yd.

#### FINISHED GARMENT MEASUREMENTS (Includes Design and Wearing Ease)

**Width, lower edge**

**Dress A, B, C** 72 73 74 75 76 77 Ins.

**Finished back length from base of neck**

**Dress A, B, C** 19½ 21½ 23½ 25½ 27½ 29½ Ins.

\*with nap \*\*without nap

Moins Facile

### ROBE AVEC VARIATIONS DE MANCHES ET BANDEAU DE TÊTE POUR ENFANTS

**Tissus Conseillés:** Vichy, Linon de coton, Cottonnades légers, Seersucker.

**Merci:** **A, B, C:** Fil élastique, 1 fermeture à glissière invisible de 41cm, 1 paquet de ruban de biais simple de 1.3cm. **Aussi pour B:** 0.7m d'élastique de 1cm. **D:** 13cm d'élastique de 2.5cm.

**Tailles** 3 4 5 6 7 8

#### MESURES DU CORPS: Choisissez la taille du patron basée sur les mesures du corps

	3	4	5	6	7	8	
<b>Poitrine</b>	56	58.5	61	63.5	66	68.5	cm
<b>Taille</b>	52	53.5	54.5	56	58.5	59.5	"
<b>Hanches</b>	—	61	63.5	66	68.5	71	"
<b>Dos du cou à la taille</b>	23	24	25.5	26.5	29	30.5	"
<b>Robe A</b>	115cm* 1.6	1.7	1.8	1.9	1.9	2.1	m
	150cm* 1.4	1.4	1.5	1.5	1.6	1.6	"
<b>Robe B</b>	115cm* 1.8	1.8	1.9	2.1	2.2	2.2	m
	150cm* 1.5	1.5	1.6	1.6	1.7	1.7	"
<b>Robe C</b>	115cm* 1.7	1.8	1.9	2.1	2.2	2.2	m
	150cm* 1.4	1.4	1.5	1.6	1.6	1.7	"

**Bandeau de tête (une taille)** - 115, 150cm\*, 0.3m

#### MESURES DES VÊTEMENTS FINI (Motif et aisance de port compris)

**Largeur à l'ourlet**

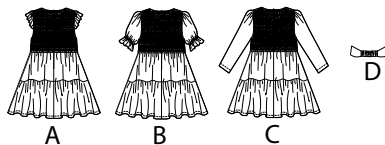
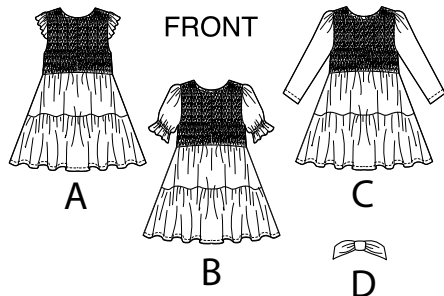
**Robe A, B, C** 183 185 188 191 193 196 cm

**Longueur finie – dos, votre nuque à l'ourlet**

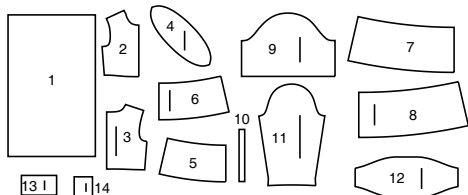
**Robe A, B, C** 50 55 60 65 70 75 cm

\*avec sens \*\*sans sens





14 PATTERN PIECES



- 1 Bodice Front and Back-A,B,C
- 2 Guide (Bodice Front)-A,B,C
- 3 Guide (Bodice Back)-A,B,C
- 4 Armhole Ruffle-A
- 5 Skirt Upper Front-A,B,C
- 6 Skirt Upper Back-A,B,C
- 7 Skirt Lower Front-A,B,C
- 8 Skirt Lower Back-A,B,C
- 9 Sleeve-B
- 10 Elastic Guide for Sleeve-B
- 11 Sleeve-C
- 12 Headband-D
- 13 Casing-D
- 14 Knot-D

**PATTERN MARKINGS**

**GRAINLINE:** Place on straight grain of fabric, parallel to selvage or fold.

**FOLDLINE:** Place line on fold of fabric.

**BUTTONHOLE MARKING:** Indicates exact length and placement of buttonholes.

**BUTTON MARKING:** Indicates button placement.

**NOTCHES AND SYMBOLS:** For matching seams and construction details.

Indicates the Bustline, Waistline, Hip and/or Biceps. Measurements refer to circumference of Finished Garment (Body Measurement + Wearing Ease + Design Ease). Adjust pattern if necessary. The measurement excludes pleats, tucks, darts and seam allowances.

**SEAM ALLOWANCE:** 5/8" (1.5cm) included unless otherwise indicated, but not printed on tissue.

**ADJUST IF NECESSARY**

Lengthen or Shorten at adjustment lines (==) or where indicated on pattern. If substantial length is added, you may need to purchase additional fabric.

**TO SHORTEN:** Crease along adjustment line. Make a fold half the amount needed. Tape in place.

**TO LENGTHEN:** Slash between adjustment lines. Spread amount as needed, keeping edges parallel. Tape over paper.

When Alteration lines are not on tissue, lengthen or shorten at lower edge.

**CUTTING AND MARKING**

**SHRINK FABRIC** if not labeled pre-shrunk. Press.

**CIRCLE LAYOUT** for View, Size, Fabric Width.

Use **WITH NAP** layout for fabrics with one-way designs, nap, pile or surface shading. Because most knits have surface shading, a with nap layout is used.

For **DOUBLE THICKNESS (WITH FOLD)** - fold fabric with right sides together.

**\*DOUBLE THICKNESS (WITHOUT FOLD)** - For fabrics with nap, fold fabric crosswise, right sides together. Mark as shown. Cut along crosswise fold of fabric (A). Turn upper layer 180° so arrows go in same direction and place over lower layer, right sides together (B).

For **SINGLE THICKNESS** - place fabric right side up. (For Fur Pile fabrics, place pile side down.)

★ Cut other pieces first, allowing enough fabric to cut this piece. Open fabric. For "Cut 1" pieces, cut piece once on single layer of fabric with piece face up on right side of fabric.

Pattern may have cutting lines for several sizes. Select the proper cutting line or pattern pieces for your size.

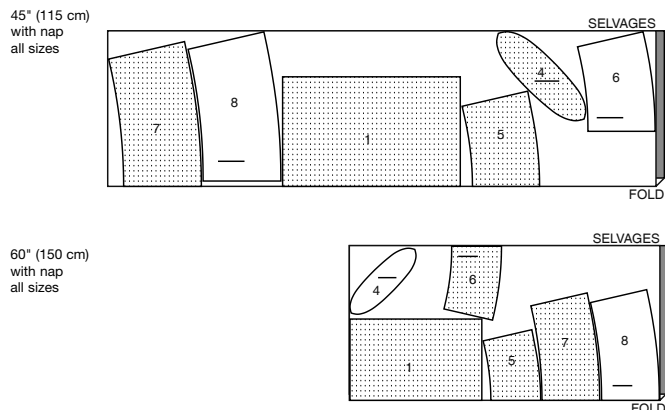
Before **CUTTING** place all pieces on fabric according to layout. Pin. (Layouts show approximate position of pattern pieces; position may vary according to your pattern size.) Cut **ACCURATELY**, cutting notches outward.

Before removing pattern, **TRANSFER MARKINGS** and lines of construction to Wrong Side of Fabric, using the Pin and Chalk Pencil method or Tracing Paper and Dressmaker Wheel. Markings needed on right side of fabric should be thread traced.

**NOTE:** Broken-line boxes (a| b| c|) in layouts represent pieces cut by measurements provided.

**CUTTING LAYOUTS**

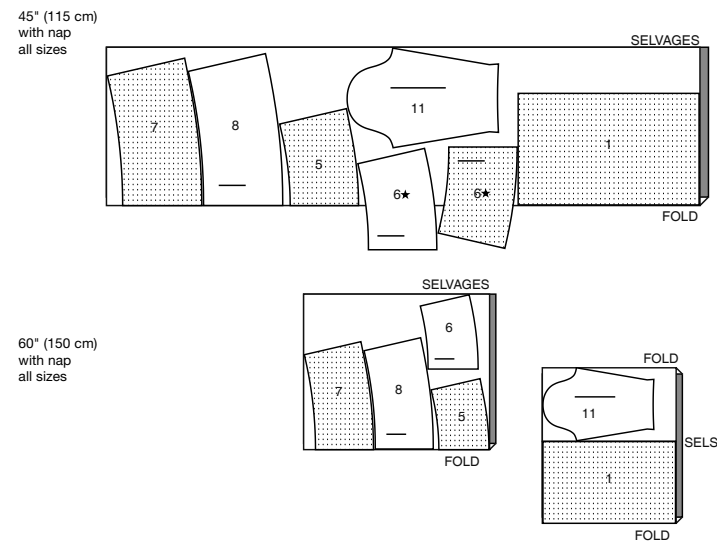
**DRESS A**  
use pieces: 1 4 5 6 7 8



**DRESS B**  
use pieces: 1 5 6 7 8 9



**DRESS C**  
use pieces: 1 5 6 7 8 11

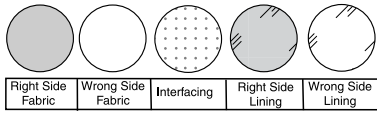


**HEADBAND D**  
use pieces: 12 13 14



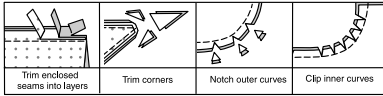
**SEWING INFORMATION**

**FABRIC KEY**



**SEAM ALLOWANCES**

Use 5/8" (1.5cm) seam allowances unless otherwise indicated.



**PIN AND FIT**

Pin or baste seams, **RIGHT SIDE TOGETHER**, matching notches. Fit garment before stitching major seams.

**PRESS**

Press seam allowances flat; then open unless otherwise stated. Clip where necessary so they lie flat.

**GLOSSARY**

Sewing methods in **BOLD TYPE** have Sewing Tutorial Video available. Scan QR CODE to watch videos:

**ARMHOLE** - see **Armholes/Sleeve**: "sewing a bias tape armhole" video

**EASE/GATHER** - see **Gathering**: "sewing two row gathers" video

**EDGESTITCH** - see **Machine Stitches**: "how to sew an edgestitch" video

**NARROW HEM** - see **Hems**: "sewing narrow hems" video

**SLEEVE** - see **Armholes/Sleeves**: "sewing a set in sleeve" video

**SLIPSTITCH** - see **Machine Stitches**: "how to do slipstitch" video

**STAYSTITCH** - see **Machine Stitches**: "how to do stay-stitching" video

**TOPSTITCH** - see **Machine Stitches**: "how to topstitch" video

**UNDERSTITCH** - see **Machine Stitches**: "how to understitch" video

**INVISIBLE ZIPPER** - see **ZIPPERS**: "sewing an invisible zipper" video

**SEWING TUTORIALS**



Build your skills viewing short, easy-to-follow videos at [simplicity.com/sewingtutorials](http://simplicity.com/sewingtutorials)

**SEWING DIRECTIONS**

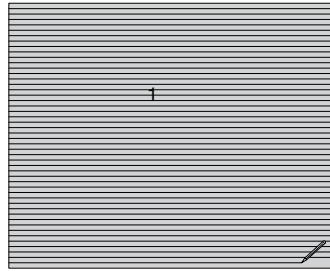
**DRESS A, B, C**

**NOTE:** The first view mentioned will be shown, unless otherwise indicated.

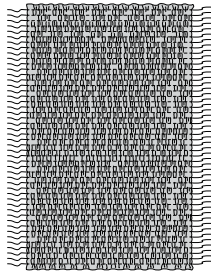
**Front and Back**

For shirring, wind the bobbin carefully by hand without pulling tightly on the elastic thread. With regular thread on top and the elastic thread in the bobbin, test the shirring on a scrap piece of fabric. On right side of fabric, stitch three or four rows to test the shirring effect. Adjust the tension as needed.

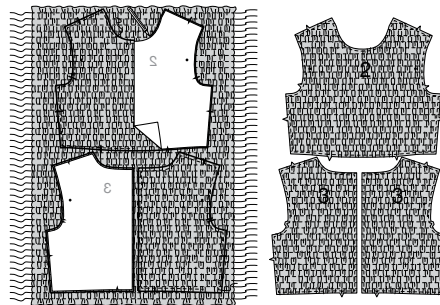
**1.** Stitching lines are 1/2"(1.3cm). Transfer stitching lines on **BODICE FRONT AND BACK (1)** to right side of fabric.



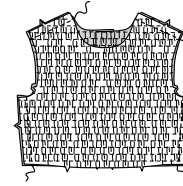
**2.** From the right side of the fabric stitch along stitching lines, back stitching at the beginning and end of each row, leaving long thread ends.



**3.** Pin **GUIDE (2)** and **GUIDE (3)** to shirred front and back, as shown. Trace shapes of pattern pieces onto fabric, tracing pattern tissue face up. Flip pattern pieces over, face down, aligning bodice front along center foldline and trace again. Stitch around outer edges of shapes just inside traced line to secure the elastic thread before cutting. Cut out bodice front section and the two bodice back sections. Transfer all markings.



**4.** Stitch bodice front and bodice back together at shoulder and side edges.

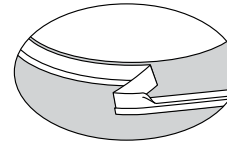


**Neckline Finish**

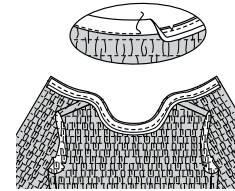
**5. STAYSTITCH** neck edge of bodice.



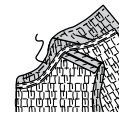
**6.** Open out one folded edge of bias tape. Shape tape to match curve of neck edge by pressing lightly. **Tip:** Use pattern tissue to help shape bias.



**7.** With right sides together, pin tape to neck edge having raw edges even. Stitch in a 3/8"(1cm) seam. Trim seam. Clip curves. **UNDERSTITCH** the tape.

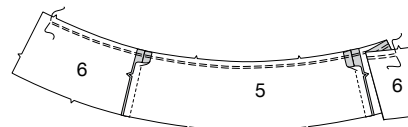


**8.** Turn tape to inside. Press. Baste in place. On outside, stitch close to basted edge of tape.

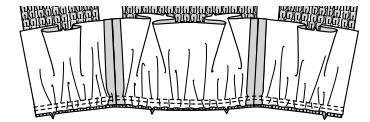


**Skirt and Invisible Zipper**

**9.** Stitch **SKIRT UPPER BACK (6)** sections to **SKIRT UPPER FRONT (5)** at sides. **GATHER** upper edge between back notches.

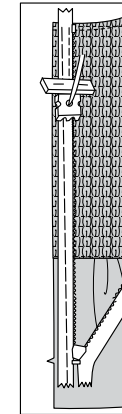


**10.** Pin upper skirt to bodice, right sides together, matching notches, centers, and side seams. Adjust gathers. Stitch. Stitch again 1/4"(6mm) in seam allowance. Press seam toward upper skirt.

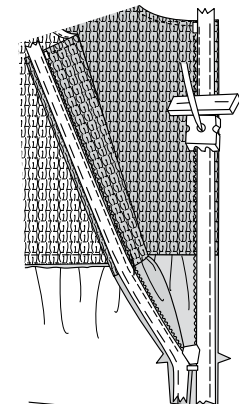


**NOTE:** Stitch the **INVISIBLE ZIPPER** using an invisible zipper foot. If the zipper is longer than the zipper opening, adjust after the zipper is inserted.

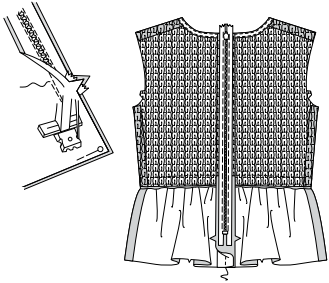
**11.** Open the zipper and press the tape using a cool iron. On **OUTSIDE**, pin **RIGHT** side of the zipper face down on the **RIGHT** side of the zipper opening. Have the coil along the seam line, the tape within the seam allowance and the top stop even with finished edge of the neck, as shown. Hand-baste along center of the tape. Position zipper foot at the top of the zipper with **RIGHT** groove of the foot over coil. Stitch along tape to the notch. Back-stitch to reinforce.



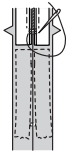
**12.** Pin the remaining half of the zipper to the **LEFT** side of the zipper opening in same manner. Make sure the upper edges of the garment are even and that waist seams match. Hand-baste along the center of the tape. Position zipper foot at the top of the zipper with **LEFT** groove over the coil. Stitch along tape to the notch. Back-stitch to reinforce.



**13.** Close zipper and check that it is invisible from the outside. Pull the free ends of the zipper tape away from the seam allowance. Pin remaining center back seam together below zipper. Position zipper foot all the way to the left so the needle goes down through the outer notch of the foot. Start stitching seam 1/4"(6mm) above lowest stitch and slightly to the left. Stitch remainder of the seam.



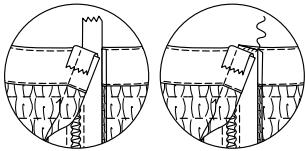
**14.** If the zipper is longer than the opening, using a strong thread, hand-sew a few small stitches across ends of coils at end of opening. Trim away lower end of zipper tape to within 5/8"(1.5cm) of hand-stitches.



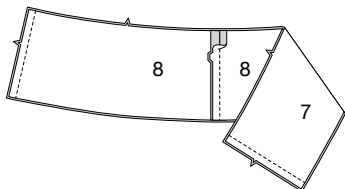
**15.** If you prefer, open out each seam allowance at end of zipper and stitch tape to seam allowance.



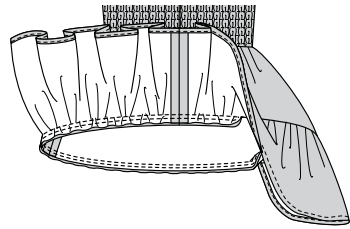
**16.** Turn under upper ends of zipper tape over seam allowance. Hand-sew to neck binding.



**17.** Stitch SKIRT LOWER BACK (8) sections to SKIRT LOWER FRONT (7) at sides. Stitch center back seam. **GATHER** upper edge. Make a **NARROW HEM** on lower edge.

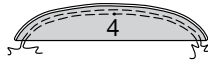


**18.** Pin lower skirt to upper skirt, right sides together, matching centers, notches, and side seams. Adjust gathers. Stitch. Stitch again 1/4"(6mm) away in seam allowance. Press seam toward upper skirt, turning lower skirt down.



Armhole Ruffle - View A

**19.** With wrong sides together, fold ARMHOLE RUFFLE (4) in half lengthwise, matching small dots and having raw edges even. Baste. **GATHER** raw edges together.

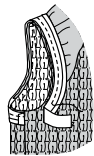


**20.** On outside, pin armhole ruffle to armhole matching small dot to shoulder seam and ends of ruffle to notches on front and back. Adjust gathers. Baste. **STAYSTITCH** armhole edge. Trim away 1/4"(6mm) from armhole edges on bodice before continuing.

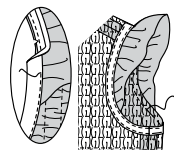


**NOTE: ARMHOLE** is finished with bias tape.

**21.** Open out one folded edge of bias tape. With right sides together, pin tape to armhole edge having raw edges even, turning under and lapping one end at side seam. Stitch in a 3/8"(1cm) seam. Trim seam. Clip curves.

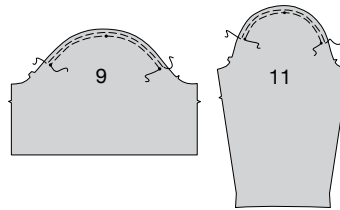


**22.** **UNDERSTITCH** the tape. Turn tape to inside along seam, turning armhole ruffle out. Press. Baste close to inner edge of tape. On outside, **TOPSTITCH** as basted.



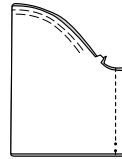
Sleeves - Views B, C

**23.** **GATHER** upper edge of SLEEVE (9) or (11) between outer small dots.

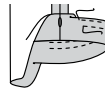


View B

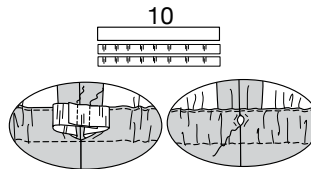
**24.** Stitch sleeve seam, leaving open between small dots.



**25.** To form casing, turn lower edge of sleeve to inside on foldline. Turn under 1/4"(6mm) on raw edge. Press. Stitch. Stitch again 1/2"(1.3cm) below previous stitching.



**26.** Cut 2 pieces of elastic using ELASTIC GUIDE FOR SLEEVE (10). Insert elastic through casing. Lap ends; hold with safety pin. Try on and adjust if necessary. Stitch ends of elastic securely. **SLIPSTITCH** opening closed.



View C

**27.** Stitch sleeve seam.

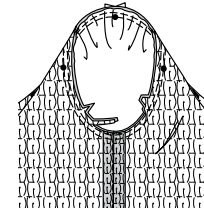


**28.** Turn up 1-1/4"(3.2cm) sleeve hem. Baste close to fold. Turn in 1/4"(6mm) on raw edge. Baste hem in place close to upper edge. Press. **TOPSTITCH** hem along upper basting.



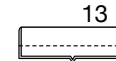
Views B, C

**29.** With right sides together, pin SLEEVE into armhole with center small dot at shoulder seam, matching underarm seams, notches and remaining small dots. Adjust gathers, baste. Stitch. Stitch again 1/8"(3mm) away in seam allowance. Trim close to stitching below notches.



HEADBAND D

**1.** Fold CASING (13) in half lengthwise, right sides together, matching notches. Stitch. Trim.



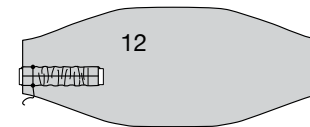
**2.** Turn right side out, folding along foldlines. Press.



**3.** Cut a piece of elastic 5"(13cm) long. Insert elastic through casing having ends even with raw edges. Baste across ends.



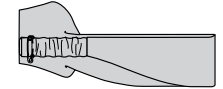
**4.** Pin one end of casing to one side of HEADBAND (12) matching middle and lower small dots. Baste.



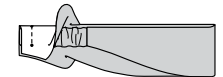
**5.** Fold headband in half lengthwise, matching small dots and having raw edges even. Stitch end with casing, pivot at lower dot and stitch lower edge, ending 3"(7.5cm) from opposite end. Trim.



**6.** Turn headband right side out, turning out casing. Press. Pin remaining end of casing to opposite end of headband with a safety pin, matching middle and lower small dots, making sure casing is not twisted. Try on and adjust if necessary.



**7.** With right sides together, fold open end of headband over casing, matching small dots. Stitch end. Trim.



**8.** Turn right side out, turning in seam allowances at opening. **SLIPSTITCH** opening closed.



**9.** With right sides together, fold KNOT (14) in half matching notches. Stitch. Trim.



**10.** Turn right side out, bringing seam to center. Press. Turn in 5/8"(1.5cm) seam allowances on ends. Press.



**11.** Wrap knot around of headband, bringing ends of knot together. **EDGESTITCH** ends of knot together, keeping headband free. Center knot over center of headband. Turn seam to inner side of headband.





# Congrats!

You've completed your sewing adventure

---

## SHARE YOUR LOOK



Post your pattern and tag us  
**@simplicity\_creative\_group** and **#mccallspatterns**  
for a chance to be featured on our social media.

Look for more PDF patterns at **simplicity.com**

Have a question or need help with your sewing project call us at  
1-800-782-0323

**McCall's**  
by design...