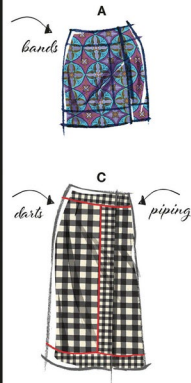




LEVEL  
Learn to Sew™



Very Easy

## MISSES' WRAP SKIRTS

**Suggested Fabrics:** Cotton Blends, Crepes, Linen, Stable Knits. **Interfacing:** Lightweight Fusible.

**Notions:** A,B,C: Two hooks and bars, one 3/8" (1.5cm) button. **Also for C:** 3 3/8 yds. (3.6m) of 1/4" (6mm) piping.

Sizes	6	8	10	12	14	16	18	20	22	24
European	32	34	36	38	40	42	44	46	48	50

## BODY MEASUREMENTS: Select pattern size based on body measurements

Bust	30 1/2	31 1/2	32 1/2	34	36	38	40	42	44	46	Ins.
Waist	23	24	25	26 1/2	28	30	32	34	37	39	"
Hip-9" below waist	32 1/2	33 1/2	34 1/2	36	38	40	42	44	46	48	"
Back-neck to waist	15 1/2	15 3/4	16	16 1/4	16 1/2	16 3/4	17	17 1/4	17 1/2	17 3/4	"

Skirt A	45"*	1 3/4	1 3/4	1 3/4	1 3/4	1 3/4	1 3/4	1 1/2	1 3/4	1 3/4	1 3/4	Yds.
	60"*	1	1	1	1	1	1	1 1/4	1 1/4	1 1/4	1 1/4	"

Interfacing A,B	20"	1	1	1	1	1	1	1 1/4	1 1/4	1 1/4	1 1/4	Yds.
-----------------	-----	---	---	---	---	---	---	-------	-------	-------	-------	------

Skirt B	45"*	3/8	1	1	1	1	1	1	1	1	1	Yds.
	60"*	1/2	1/2	1/2	1/2	1/2	1/2	3/4	1	1	1	"

Contrast B (Bands, Ties)	45"*	1	1	1	1	1	1	1	1	1	1	Yd.
	60"*	3/8	3/8	3/8	3/8	3/8	3/8	3/8	3/8	3/8	3/8	"

Skirt C	45"*	1 3/4	1 3/4	1 3/4	1 3/4	1 3/4	1 3/4	1 3/4	1 3/4	1 3/4	1 3/4	Yds.
	60"*	1	1	1	1	1	1	1	1	1	1	"

Contrast C (Bands)	45"*	1 1/8	1 1/8	1 1/8	1 1/8	1 1/8	1 1/8	1 1/8	1 1/8	1 1/8	1 1/8	"
	60"*	1	1	1	1	1	1	1	1	1	1	"

Interfacing C	20"	1	1	1	1	1	1	1 1/4	1 1/4	1 1/4	1 1/4	"
---------------	-----	---	---	---	---	---	---	-------	-------	-------	-------	---

## FINISHED GARMENT MEASUREMENTS (Includes Design and Wearing Ease)

A,B,C Waist	24	25	26	27 1/2	29 1/2	31 1/2	33 1/2	35 1/2	37 1/2	39 1/2	Ins.
A,B,C Hip	35	36	37	38 1/2	40 1/2	42 1/2	44 1/2	46 1/2	48 1/2	50 1/2	"
Width, lower edge											
Skirt A,B,C	35	36	37	38 1/2	40 1/2	42 1/2	44 1/2	46 1/2	48 1/2	50 1/2	Ins.
Finished back length from waist											
Skirt A,B	16	16	16	16	16	16	16	16	16	16	Ins.
Skirt C	31 1/2	31 1/2	31 1/2	31 1/2	31 1/2	31 1/2	31 1/2	31 1/2	31 1/2	31 1/2	"

\*with nap \*\*without nap

Tres Facile

## JUPES PORTEFEUILLE POUR JEUNES FEMMES

**Tissus Conseillés:** Cotonnades, Crêpes, Toile de lin, Tricotés stables. **Entoilage:** Thermocollant léger.

**Mercurie:** A,B,C: 2 fermetures à crochet, 1 bouton de 1.5cm. **Aussi pour C:** 3.6m de passepoil de 6mm.

Tailles	6	8	10	12	14	16	18	20	22	24
Françaises	34	36	38	40	42	44	46	48	50	52
Européen	32	34	36	38	40	42	44	46	48	50

## MESURES DU CORPS: Choisissez la taille du patron basée sur les mesures du corps

Poitrine	78	80	83	87	92	97	102	107	112	117	cm
Taille	58	61	64	67	71	76	81	87	94	99	"

## Hanches (23cm au-dessous de la taille)

	83	85	88	92	97	102	107	112	117	122	cm
Dos du cou à la taille	39.5	40	40.5	41.5	42	42.5	43	44	44.5	45	"

Jupe A	115cm*	1.3	1.3	1.3	1.3	1.3	1.3	1.5	1.6	1.6	m
	150cm*	0.9	0.9	0.9	0.9	0.9	0.9	1.0	1.1	1.3	"

Entoilage A,B	51cm	0.9	0.9	0.9	0.9	0.9	0.9	1.0	1.0	1.0	m
---------------	------	-----	-----	-----	-----	-----	-----	-----	-----	-----	---

Jupe B	115cm*	0.8	0.8	0.8	0.8	0.8	0.8	0.8	0.8	0.8	m
	150cm*	0.5	0.5	0.5	0.5	0.5	0.5	0.8	0.8	0.8	"

Contraste B (Bandes, attaches)	115cm*	0.9	0.9	0.9	0.9	0.9	0.9	0.9	0.9	0.9	m
	150cm*	0.8	0.8	0.8	0.8	0.8	0.8	0.8	0.8	0.8	"

Jupe C	115cm*	1.6	1.6	1.6	1.6	1.6	1.6	1.6	1.6	1.6	m
	150cm*	0.9	0.9	0.9	0.9	0.9	0.9	1.6	1.6	1.6	"

Contraste C (Bandes)	115cm*	1.0	1.0	1.0	1.0	1.0	1.0	1.0	1.0	1.0	"
	150cm*	0.9	0.9	0.9	0.9	0.9	0.9	0.9	0.9	0.9	"

Entoilage C	51cm	0.9	0.9	0.9	0.9	0.9	0.9	1.0	1.0	1.1	"
-------------	------	-----	-----	-----	-----	-----	-----	-----	-----	-----	---

## MESURES DES VÊTEMENTS FINI (Motif et aisance de port compris)

A,B,C Taille	61	64	66	70	75	80	85	90	95	100	cm
A,B,C Hanches	89	91	94	98	103	108	113	118	123	128	"
Largeur à l'ourlet											
Jupe A,B,C	89	91	94	98	103	108	113	118	123	128	cm
Longueur finie – dos, taille à l'ourlet											
Jupe A,B	41	41	41	41	41	41	41	41	41	41	cm
Jupe C	80	80	80	80	80	80	80	80	80	80	"

\*avec sens \*\*sans sens



A



B

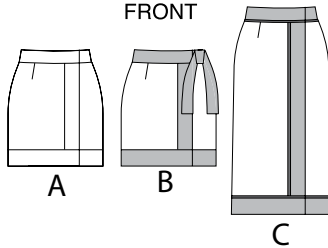


C

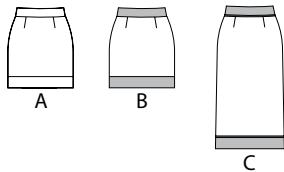


## LEVEL Learn to Sew™

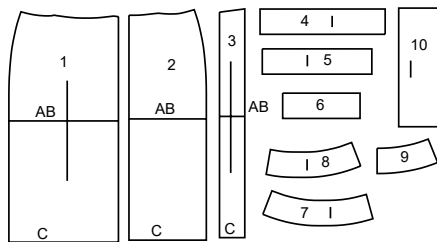
### FRONT



### BACK



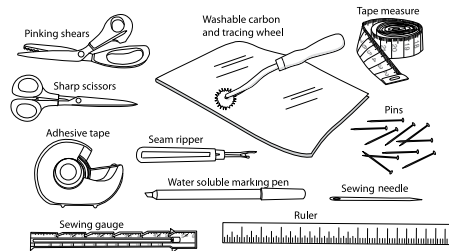
### 10 PATTERN PIECES



- 1 FRONT-A,B,C
- 2 BACK-A,B,C
- 3 FRONT BAND-A,B,C
- 4 LOWER RIGHT FRONT BAND-A,B,C
- 5 LOWER LEFT FRONT BAND-A,B,C
- 6 LOWER BACK BAND-A,B,C
- 7 RIGHT FRONT WAISTBAND-A,B,C
- 8 LEFT FRONT WAISTBAND-A,B,C
- 9 BACK WAISTBAND-A,B,C
- 10 TIE-B

### SEWING SUPPLIES

In addition to the notions listed on the back of the envelope, the following supplies are good to have:



### SELECT YOUR SIZE AND PATTERN PIECES

**SELECT** your size by comparing your waist and hip measurements to the measurements on the envelope flap. Choose the size closest to your measurements.

**SELECT** pattern pieces for the view you are making:

Skirt A: 1, 2, 3, 4, 5, 6, 7, 8 & 9

Skirt B: 1, 2, 3, 4, 5, 6, 7, 8, 9 & 10

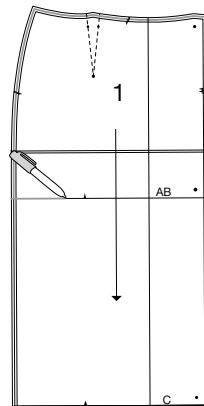
Skirt C: 1, 2, 3, 4, 5, 6, 7, 8 & 9

**SEPARATE** your pattern pieces, leaving a tissue margin around all pieces.

**PRESS** each piece with a dry iron.

This pattern has more than one size. Using a color pencil or highlighter, carefully mark the cutting lines for your size. Also mark the pattern markings for your size. (See Pattern Markings.)

**Views A & B** have a cut line. Mark selected View with color pencil or highlighter.

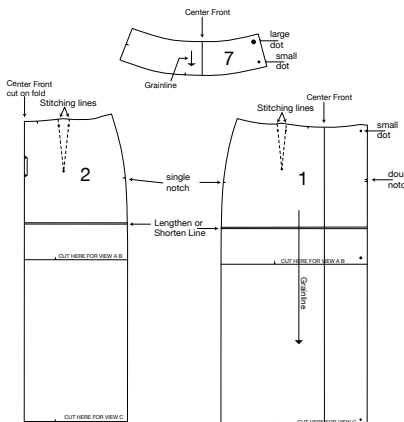


**CUT** pattern pieces close to the marked lines for your size and view, leaving a tissue margin around all pieces.

### PATTERN MARKINGS

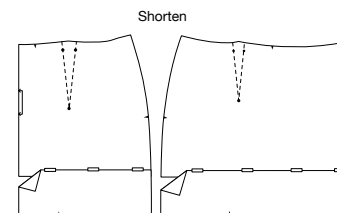
Solid lines are Foldlines and Center Markings. Broken lines are stitching lines. Lines with an arrow on one end are Grainlines. Rectangular Lines with arrows pointing to a solid line marked "ON FOLD" indicate to place the line on the fold of the fabric and NOT TO CUT along that line.

The following are symbols: Notches, Large Dots and Small Dots.

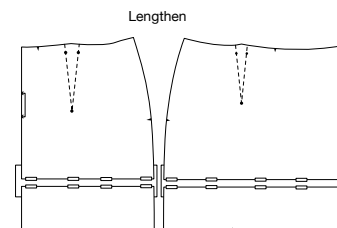


### ADJUSTING PATTERN LENGTH

**TO SHORTEN:** Cut pattern apart along lengthen or shorten line. Overlap the pieces the determined amount you want to shorten the pattern. Tape the pattern together.



**TO LENGTHEN:** Cut the pattern apart along lengthen or shorten line. Spread the upper and lower halves apart the determined amount you want to lengthen the pattern using the grainline arrows to keep the pieces aligned. Slip a piece of paper underneath and tape the pieces in place. Connect the side cutting lines.



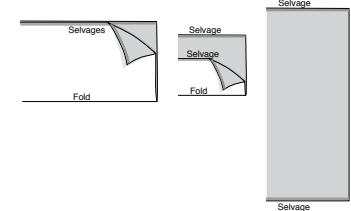
### LAYOUTS

It is a good idea to wash or pre-treat fabric to pre-shrink it before cutting. Wash or pre-treat the fabric as you would the finished garment. Press fabric if necessary.

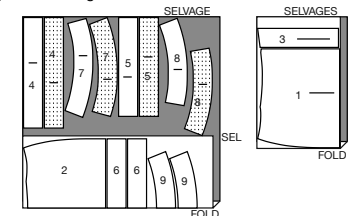
Circle the layout for the view, size, and width of fabric you are using.

Make sure you have all the pattern pieces listed for that layout.

Fold the fabric to match the layout. See examples below. The fabric is folded, right sides together, along the lengthwise grain. In some layouts the selvage edges will be even with a fold on one side and the selvage edges on the other. In other layouts the fabric is folded just enough to fit the pattern piece that is cut on the fold, with a fold on one side and uneven selvage edges on the other. In other layouts, the fabric is not folded (single layer) with selvages on both sides.



Place the pieces on the fabric according to the diagram you circled. White pieces in the diagram indicate the pattern is face up. Dotted pieces in the diagram indicate the pattern is face down. Place the pieces with the grainline parallel to the selvage or fold edge of the fabric with the arrows pointing in the same directions. Place pieces marked "ON FOLD" along the folded edge of fabric to create a full piece when cut out. The fold edge is not to be cut. Secure the pieces with pins or weights. **NOTE:** The layouts are a general placement of the pieces for all the sizes. Depending on your size, your pieces may fit closer together.



After laying out all your pieces, cut them out. Pieces that extend beyond the selvage edge of the fabric and are marked with a star symbol indicate to cut one of that piece. Cut the other pieces first, then open the fabric out to cut the starred pieces.

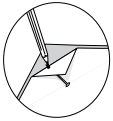
### TRANSFER MARKING

Transfer markings on the pattern tissue to the fabric pieces before removing the tissue. It is a good idea to keep your tissue pinned to your fabric piece until you are ready to sew. Follow the instructions below to transfer markings on the pattern to the fabric pieces.

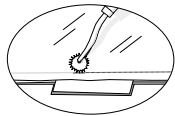
**NOTCHES:** Make a tiny clip at notch marking no more than 1/8" (3mm) into the seam allowance, instead of cutting out the shape of the notch. **NOTE:** for clarity, illustrations in the instructions show notches cut outward.



**SYMBOLS:** Poke through the tissue with a pin at the symbols. Lift tissue and mark fabric with a water soluble marking pen or marking pencil at the pin, OR, mark symbols with a cross using washable carbon paper and tracing wheel.



**STITCHING AND FOLDLINES:** Using washable carbon paper and tracing wheel, trace stitching lines and foldlines to fabric.



After cutting out the pieces, label them on the wrong side of the fabric with tape. That will help keep track of the pieces and distinguish the right and wrong sides of fabrics where both sides look the same.

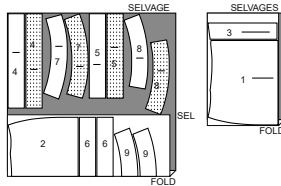
## CUTTING LAYOUTS

RIGHT SIDE OF PATTERN	WRONG SIDE OF PATTERN	RIGHT SIDE OF FABRIC	WRONG SIDE OF FABRIC

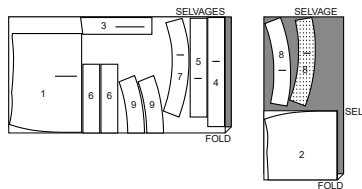
## SKIRT A

use pieces: 1 2 3 4 5 6 7 8 9

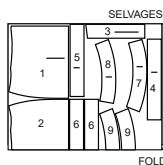
45" (115 cm)  
with nap  
sizes 6 8 10 12  
14 16 18



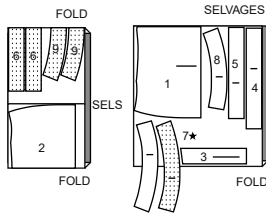
45" (115 cm)  
with nap  
sizes 20 22 24



60" (150 cm)  
with nap  
sizes 6 8 10 12 14 16 18



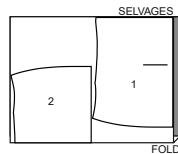
60" (150 cm)  
with nap  
sizes 20 22 24



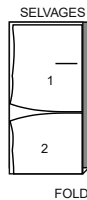
## SKIRT B

use pieces: 1 2

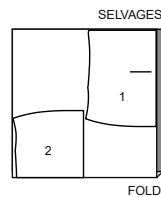
45" (115 cm)  
with nap  
all sizes



60" (150 cm)  
with nap  
sizes 6 8 10 12 14 16 18



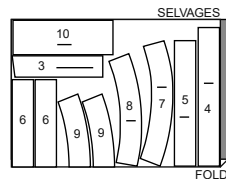
60" (150 cm)  
with nap  
sizes 20 22 24



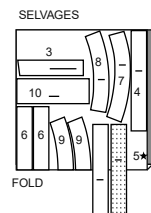
## CONTRAST B (BANDS AND TIE)

use pieces: 3 4 5 6 7 8 9 10

45" (115 cm)  
with nap  
all sizes



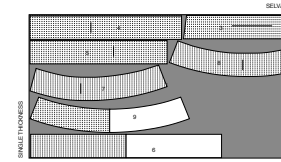
60" (150 cm)  
with nap  
all sizes



## INTERFACING A,B

use pieces: 3 4 5 6 7 8 9

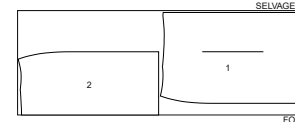
20" (51 cm)  
without nap  
all sizes



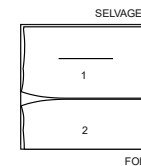
## SKIRT C

use pieces: 3 4 5 6 7 8 9

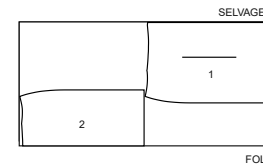
45" (115 cm)  
with nap  
all sizes



60" (150 cm)  
with nap  
sizes 6 8 10 12 14 16 18



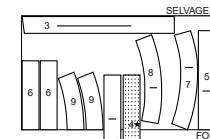
60" (150 cm)  
with nap  
sizes 20 22 24



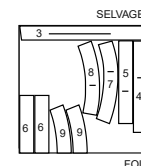
## CONTRAST C (BANDS)

use pieces: 3 4 5 6 7 8 9

45" (115 cm)  
with nap  
all sizes



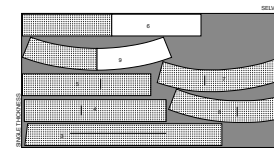
60" (150 cm)  
with nap  
all sizes



## INTERFACING C

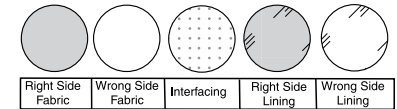
use pieces: 3 4 5 6 7 8 9

20" (51 cm)  
without nap  
all sizes



## SEWING INFORMATION

### FABRIC KEY



## SEWING PROCEDURES

Read the instructions through before beginning. Wind extra bobbins. Set the machine for regular stitch length, 10-12 stitches per inch (4-5 stitches per centimeter). Start each new project with a new sewing machine needle.

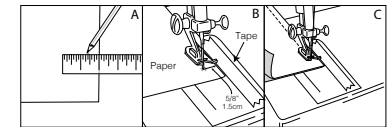
### SEWING SEAMS

5/8" (1.5cm) seam allowances are included for all seams unless otherwise indicated on the pattern piece or in the instructions.

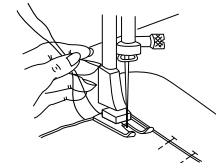
Mark the seam allowances on your pieces for ease and accuracy of sewing.

Pin the pieces being sewn, right sides together, matching the 5/8" (1.5cm) seam allowances, unless otherwise indicated in the sewing instructions.

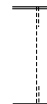
If not marking the seam allowances, it does help to follow the stitching guide on the throat plate of your sewing machine. If your sewing machine doesn't have a marking, you can make your own. (A). Measure and mark 5/8" (1.5cm) from the edge of a piece of paper. (B). Align the marking on the paper under the foot of your machine with the edge of the paper to the right of the needle. Lower the needle until it hits the mark and place a piece of tape at the edge to act as a guide. (C). Use the tape to guide your fabric.



Pull the bobbin thread and the needle thread toward the back of the machine underneath the presser foot. Place the pinned pieces under the presser foot with the raw edges along the stitching guide. Lower the presser foot and begin to sew the seam. Remove the pins as you stitch. Do not sew over the pins.

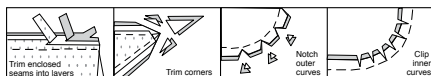


Secure the beginning and end of the seam by backstitching. To backstitch, sew a few stitches and stop. Change the setting to reverse stitching and stitch a few stitches in reverse, stitching back over the stitches that were just stitched. Change the setting back to regular stitching and stitch to the end of the seam and repeat the backstitching procedure. Trim the thread ends.

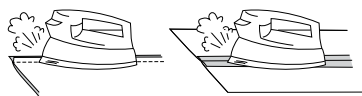


**TRIMMING AND CLIPPING SEAMS**

Trimming and clipping the seam allowances reduces bulk on enclosed seams.

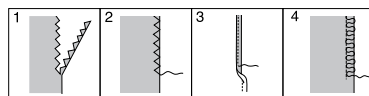
**PRESSING SEAMS**

Press seam allowances flat. Then press open or as directed in the sewing instructions. Clip seam allowances where necessary so they lie flat.

**FINISHING SEAMS AND RAW EDGES**

When working with a fabric that ravels, or to give a more finished look to the inside of the garment, finish the seam allowances or raw edges using one of the following methods:

- (1) Trim the edge using pinking shears.
- (2) Stitch a zigzag stitch along the edge.
- (3) Stitch 1/4" (6mm) from raw edge. Turn in along stitching and stitch close to fold.
- (4) Using a serger sewing machine, stitch along the edges without trimming away fabric.

**SEWING DIRECTIONS****GLOSSARY****GENERAL DIRECTIONS FOR PIPING**

Sewing methods in **BOLD TYPE** have Sewing Tutorial Video available. Scan **QR CODE** to watch videos:

**DART**- see **sewing flat dart** video,

**NARROW HEM**- see **how to sew narrow hems** video.

**STAYSTITCH** - see **how to do staystitching** video.

**STITCH IN THE DITCH**- see **how to stitch in the ditch** video.

**UNDERSTITCH**- see **how to understitch** video.

SEWING TUTORIALS



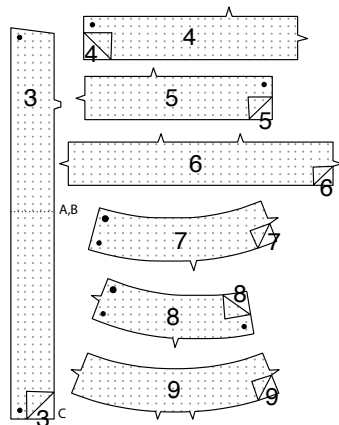
Build your skills viewing short, easy-to-follow videos at [simplicity.com/sewingtutorials](http://simplicity.com/sewingtutorials)

**SKIRT A, B, C**

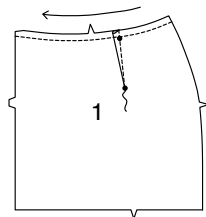
**NOTE:** Illustrated for **View A** unless otherwise indicated.

**INTERFACING**

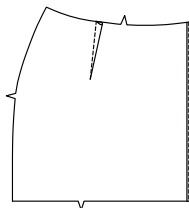
1. Fuse interfacing to wrong side of each **FABRIC** section, following manufacturer's directions.

**FRONT**

2. **STAYSTITCH** upper edge of **FRONT** (1) sections. Make **DART** and press toward center front.

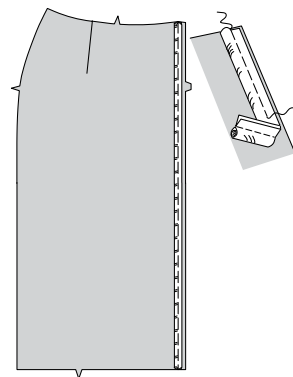


3. Make a 5/8" (1.5cm) **NARROW HEM** on front edge of left skirt. **NOTE: For View C** - When stitching seams trimmed with piping, use a zipper or cording foot.

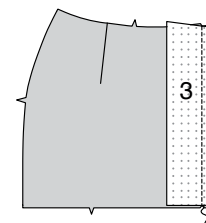


4. **FOR VIEW C** - On **OUTSIDE**, pin piping to front edge of right skirt, having cord extend beyond seam line and flat/lip edge within seam allowance. Machine-baste as close to cord as possible without catching in cord. Trim ends even with skirt.

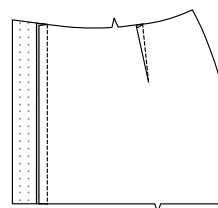
**TIP**- To reduce bulk at seams, open out fabric covering and trim cord from where it will cross seam line.



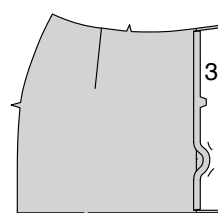
5. **FOR ALL VIEWS**-With right sides together, pin **FRONT BAND** (3) to front edge of right front (over piping for **View C**), matching double notches. Stitch.



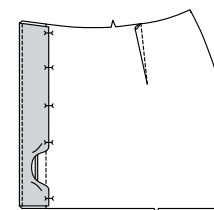
6. Press front band out, pressing seam toward band. The remaining front band will be used as the front band facing.



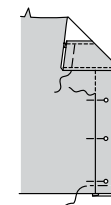
7. Press under 1/2" (1.3cm) on double-notched edge of front band facing. With **RIGHT** sides together and raw edges even, stitch facing to front band along front edge.



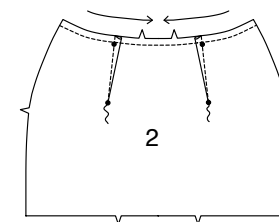
8. **UNDERSTITCH** front band facing. Turn facing to **INSIDE**; press. Pin pressed edge 1/8" (3mm) over seam, placing pins on outside.



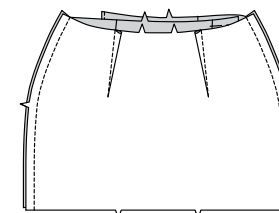
9. On outside **STITCH IN THE DITCH** of the seam, catching in pressed edge on **INSIDE**. Baste facing to skirt along upper and lower edges.

**BACK AND SIDE SEAMS**

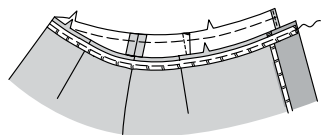
10. **STAYSTITCH** upper edge of **BACK** (2). Make **DARTS** and press toward center back.



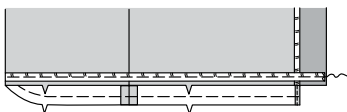
11. Stitch left and right front to back at sides.



**12. FOR VIEW C** - Baste piping to waist in same manner as for front edge.

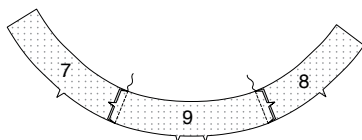


**13.** Baste piping to lower edge of skirt in same manner as for waist.



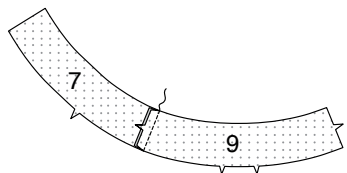
### WAISTBAND

**14. FOR VIEW A, C:** Stitch RIGHT FRONT WAISTBAND (7) and LEFT FRONT WAISTBAND (8) to BACK WAISTBAND (9) at side seams.

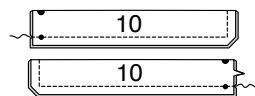


### FOR VIEW B

**15.** Stitch RIGHT FRONT WAISTBAND (7) to BACK WAISTBAND (9) at right side seam, matching small and large dots.



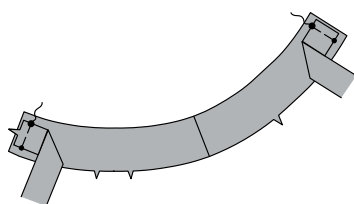
**16.** Fold each TIE (10) section in half, lengthwise, with right sides together and raw edges even. Stitch raw edges together, leaving end with dots open. Trim seams and corners.



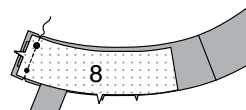
**17.** Turn tie; press. Baste raw edges together.



**18.** On outside, baste one tie to left end of back waistband, matching small and large dots. Baste remaining tie to front edge of right waistband, matching small and large dots.

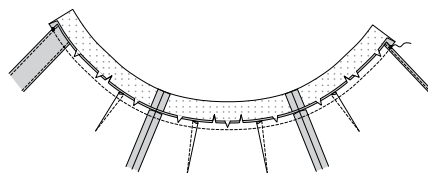


**19.** Stitch left waistband to back waistband, matching small and large dots.

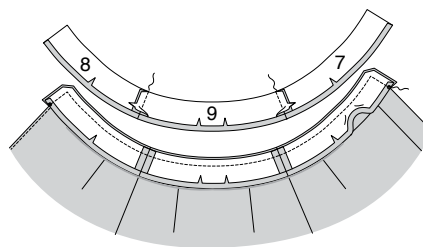


### FOR ALL VIEWS

**20.** With RIGHT sides together, pin waistband to upper edge of skirt (over piping for View C), matching centers, side seams, and small dots. Stitch. Trim seam; clip curves. Press seam toward waistband. The remaining waistband sections will be used as waistband facing.

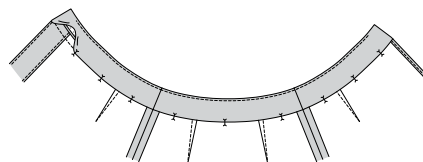


**21.** Stitch waistband facing sections together at side seams, matching notches. Press under 1/2" (1.3cm) on lower notched edge. With right sides together, pin facing to waistband (over ties for View B), matching centers, side seams, and small dots. Stitch ends and upper edges between small dots. Trim seam and corners. Clip curves.

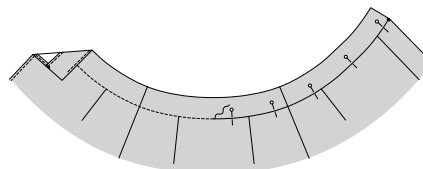


**22. UNDERSTITCH** waistband facing as far as possible.

Turn facing to inside, pulling out ties for View B. Press. On inside, pin pressed edge of facing 1/8" (3mm) over seam, placing pins on outside.

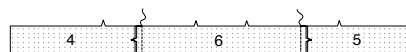


**23.** On outside, **STITCH IN THE DITCH** of the seam, catching in pressed edge on inside.

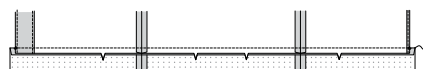


### LOWER BAND

**24.** Stitch LOWER RIGHT FRONT BAND (4) and LOWER LEFT FRONT BAND (5) to LOWER BACK BAND (6) at side seams, matching notches.

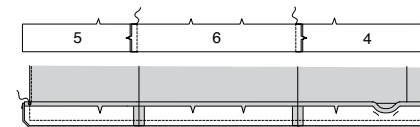


**25.** Pin lower band to lower edge of skirt (over piping for View C), matching centers, side seams, and small dots (front edges will extend 5/8" (1.5cm) beyond finished edges of skirt). Stitch. Press band out, pressing seam toward band. The remaining lower band sections will be used as lower band facings.



**26.** Stitch side seams of lower band facings same as for band.

Press under 1/2" (1.3cm) on upper notched edge. With RIGHT sides together, pin facing to lower band, matching centers, seams, and small dots. Stitch ends and lower edges between small dots. Trim seam and corners.



**27. UNDERSTITCH** lower facing as far as possible.

Turn facing to INSIDE; press. On INSIDE, pin pressed edge of facing 1/8" (3mm) over seam, placing pins on OUTSIDE.

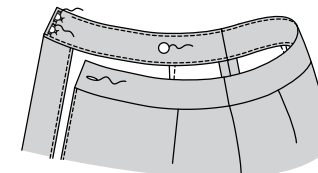


**28.** On OUTSIDE, **STITCH IN THE DITCH** of the seam, catching in pressed edge on INSIDE.

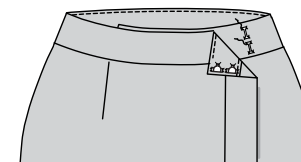


### FINISHING

**29.** On outside, make buttonhole on left end of waistband at marking. On inside, sew button to waistband at small dot and hooks to right end, having outer edges of hooks approximately 1/8" (3mm) from seam.



**30.** Lap right front over left and fasten button, matching centers front. On outside, sew bars to left waistband under hooks.





# Congrats!

You've completed your sewing adventure

---

## SHARE YOUR LOOK



Post your pattern and tag us  
**@simplicity\_creative\_group** and **#mccallspatterns**  
for a chance to be featured on our social media.

Look for more PDF patterns at **simplicity.com**

Have a question or need help with your sewing project call us at  
1-800-782-0323

McCall's ©2023 a division of IG Design Group Americas Inc. • Atlanta, GA 30342 USA [www.thedesigngroup.com](http://www.thedesigngroup.com) • All Rights Reserved. [www.mccall.com](http://www.mccall.com) • Made in the U.S.A. Fabriqué aux États-Unis.To be used for individual private home use only and not for commercial or manufacturing purposes. • A usage privé seulement et non à des fins commerciales ou de production en série. • Para uso privado solamente, no se puede utilizar con propósitos de comercialización o de producción en serie.