

MISSES' SHORTS AND PANTS											Average
Suggested Fabrics: Chino, Cotton Blends, Denim, Twill. Lining: Cotton Blends. Interfacing: Lightweight Fusible.											
Notions: A,B,C: 7" (18cm) zipper (adjust to fit), one ¾" (2cm) button.											
Sizes	6	8	10	12	14	16	18	20	22	24	
European	32	34	36	38	40	42	44	46	48	50	
BODY MEASUREMENTS: Select pattern size based on body measurements											
Bust	30½	31½	32½	34	36	38	40	42	44	46	Ins. "
Waist	23	24	25	26½	28	30	32	34	37	39	"
Hip-9" below waist	32½	33½	34½	36	38	40	42	44	46	48	"
Back-neck to waist	15½	15¾	16	16¼	16½	16¾	17	17¼	17½	17¾	"
Interfacing A,B,C - 20" - ¾ yd.											
Shorts A (sits ½" below waist)											
45"	1¾	1¾	1¾	1¾	1¾	1¾	1¾	1¾	1¾	2	Yds. "
60"	1¾	1¾	1¾	1¾	1¾	1¾	1¾	1¾	1½	1½	"
Contrast (Side Front and Back) - 45, 60" - ¾ yd.											
Pants B (sits ½" below waist)											
45"	1¾	2	2½	2½	2½	2½	2½	2½	2½	2½	Yds. "
60"	1¾	1¾	1¾	1¾	1¾	1¾	1¾	1¾	1¾	1¾	"
Contrast 1 (Side Front and Back)											
45"	1¾	1¾	1¾	1¾	1¾	1¾	1¾	1¾	1¾	1½	Yds. "
60"	1¾	1¾	1¾	1¾	1¾	1¾	1¾	1¾	1¾	1¾	"
Contrast 2 (Lower Front and Back) - 45, 60" - 1½ yds.											
Pants C (sits ½" below waist)											
45"	2¾	2¾	2¾	3	3	3½	3½	3½	3½	3½	Yds. "
60"	2¾	2¾	2¾	2¾	2¾	2¾	2¾	2½	2½	2½	"
FINISHED GARMENT MEASUREMENTS (Includes Design and Wearing Ease)											
A,B,C Hip	35	36	37	38½	40½	42½	44½	46½	48½	50½	Ins. "
Width, each leg											
Shorts A	24½	25¼	26	27½	28¾	30	31½	32½	33¾	35	Ins. "
Pants B,C	27	27½	28	28½	29	29½	30	30½	31	31½	"
Finished side length from waist											
Shorts A	20½	20¾	21	21¼	21½	21¾	22	22¼	22½	22¾	Ins. "
Pants B,C	40½	40¾	41	41¼	41½	41¾	42	42¼	42½	42¾	"
*with nap **without nap											

Moins Facile

SHORT ET PANTALON POUR JEUNES FEMMES

Tissus Conseillés: Chino, Cottonnades, Denim, Twill. Doublure: Cottonnades. Entoilage: Thermocollant léger.

**Mercerie: A,B,C:** Fermeture à glissière de 18cm (adaptez pour ajuster), 1 bouton de 2cm.

Tailles	6	8	10	12	14	16	18	20	22	24	
Françaises	34	36	38	40	42	44	46	48	50	52	
Européen	32	34	36	38	40	42	44	46	48	50	

**MESURES DU CORPS:** Choisissez la taille du patron basée sur les mesures du corps

Poitrine	78	80	83	87	92	97	102	107	112	117	cm
Taille	58	61	64	67	71	76	81	87	94	99	"
Hanches (23cm au-dessous de la taille)	83	85	88	92	97	102	107	112	117	122	cm
Dos du cou à la taille	39.5	40	40.5	41.5	42	42.5	43	44	44.5	45	"

**Entoilage A,B,C - 51cm - 0.7m.**

**Short A (reste à 1.3cm au-dessous de la taille)**

115cm	1.4	1.5	1.5	1.5	1.5	1.5	1.6	1.6	1.7	1.8	m
150cm*	1.3	1.3	1.3	1.3	1.1	1.3	1.3	1.3	1.4	1.4	"

**Contraste (Découpe devant et dos) - 115, 150cm - 0.6m.**

**Pantalon B (reste à 1.3cm au-dessous de la taille)**

115cm*	1.7	1.8	1.8	1.9	1.9	1.9	1.9	2.1	2.1	2.2	m
150cm*	1.6	1.5	1.6	1.6	1.5	1.6	1.6	1.5	1.6	1.6	"

**Contraste 1 (Découpe devant et dos)**

115cm*	1.0	1.0	1.0	1.0	1.1	1.1	1.3	1.3	1.3	1.4	m
150cm*	1.0	1.0	1.0	1.0	1.0	1.0	1.0	1.1	1.1	1.1	"

**Contraste 2 (Devant et dos inférieurs) - 115, 150cm - 1.0m.**

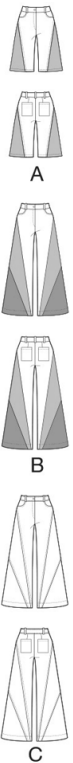
**Pantalon C (reste à 1.3cm au-dessous de la taille)**

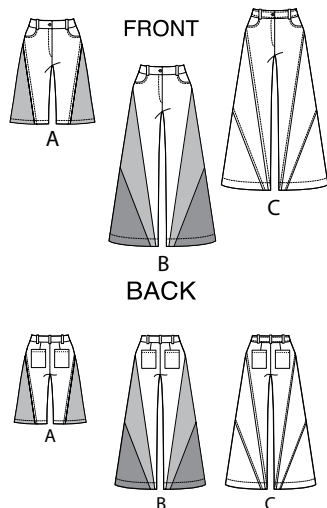
115cm*	2.5	2.6	2.6	2.6	2.7	2.9	2.9	3.0	3.1	3.1	m
150cm*	1.9	1.9	1.9	2.1	2.1	2.1	2.3	2.3	2.4	2.4	"

**MESURES DES VÊTEMENTS FINI (Motif et aisance de port compris)**

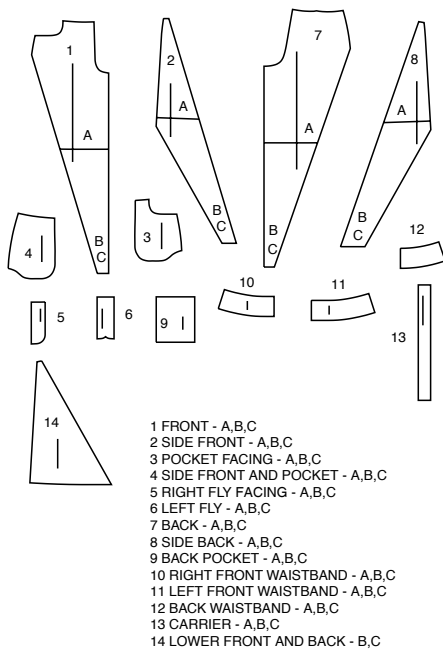
A,B,C Hanches	89	91	94	98	103	108	113	118	123	128	cm
Largeur, chaque jambe											
Short A	62	64	66	70	73	76	79	83	86	89	cm
Pantalon B,C	69	70	71	72	74	75	76	77	79	80	"
Longueur finie – côté, taille à l'ourlet											
Short A	52	53	53	54	55	55	56	57	57	58	cm
Pantalon B,C	103	104	104	105	105	106	107	107	108	109	"

\*avec sens \*\*sans sens

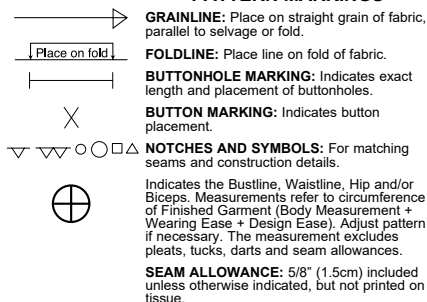




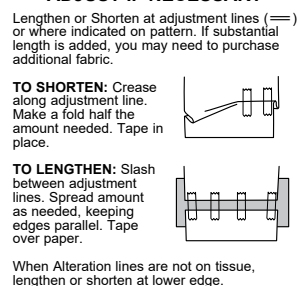
## 14 PATTERN PIECES



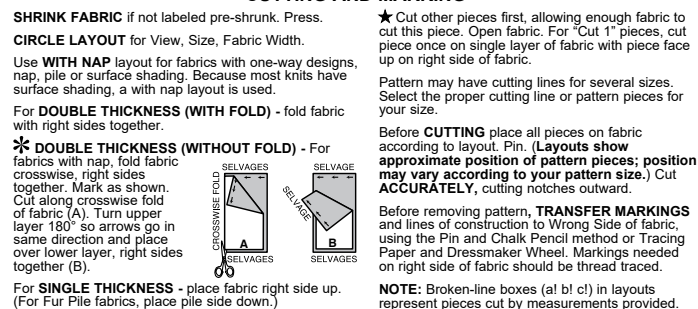
## PATTERN MARKINGS



## ADJUST IF NECESSARY



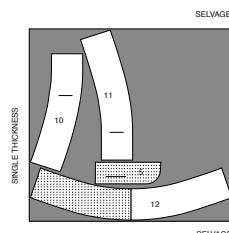
## CUTTING AND MARKING



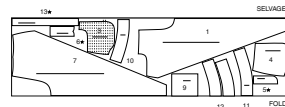
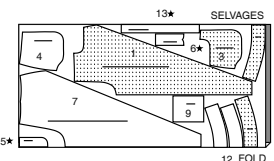
## CUTTING LAYOUTS

## INTERFACING A, B, C

use pieces: 5 10 11 12

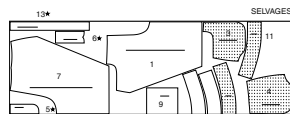
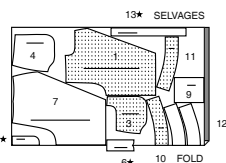
20" (51 cm)  
without nap  
all sizes

## PANTS B WORN 1/2" (1.3CM) BELOW WAIST

use pieces: 1 3 4 5 6 7 9 10 11 12 13  
Cut on of pieces 5 6 1345" (115 cm)  
with nap  
all sizes60" (150 cm)  
with nap  
all sizes

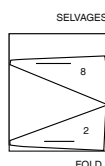
## SHORTS A- WORN 1/2" (1.3CM) BELOW WAIST

use pieces: 1 3 4 5 6 7 9 10 11 12 13

45" (115 cm)  
with nap  
Cut on of pieces 5 6 1360" (150 cm)  
with nap  
all sizes  
Cut on of pieces 5 13

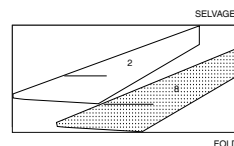
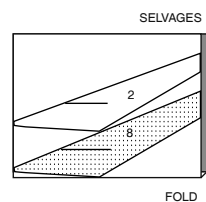
## CONTRAST (SIDE FRONT AND BACK)

use pieces: 2 8

45", 60" (115, 150 cm)  
with nap  
all sizes

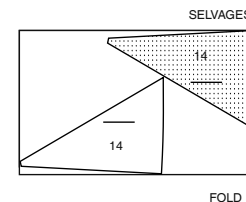
## CONTRAST 1 (SIDE FRONT AND BACK)

use pieces: 2 8

45" (115 cm)  
with nap  
all sizes60" (150 cm)  
with nap  
all sizes

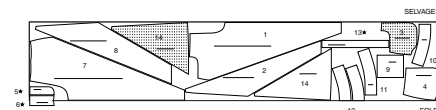
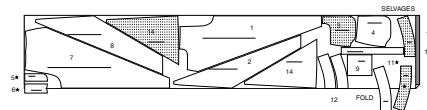
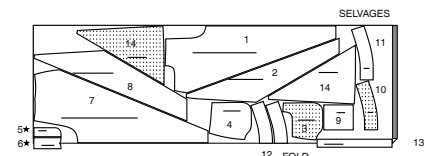
## CONTRAST 2 (LOWER FRONT AND BACK)

use piece: 14

45", 60" (115, 150 cm)  
with nap  
all sizes

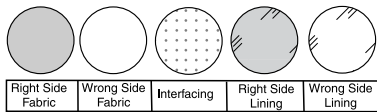
## PANTS C WORN 1/2" (1.3CM) BELOW WAIST

use pieces: 1 2 3 4 5 6 7 8 9 10 11 12 13 14

45" (115 cm)  
with nap  
sizes 6 8 10 12  
14 16 18 20 2245" (115 cm)  
with nap  
sizes 2460" (150 cm)  
with nap  
all sizes

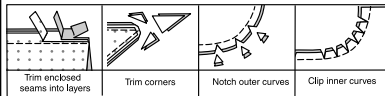
## SEWING INFORMATION

## FABRIC KEY



## SEAM ALLOWANCES

Use 1/4" (6mm) seam allowances unless otherwise indicated.



## PIN AND FIT

Pin or baste seams, **RIGHT SIDE TOGETHER**, matching notches. Fit garment before stitching major seams.

## PRESS

Press seam allowances flat; then open unless otherwise stated. Clip where necessary so they lie flat.

## GLOSSARY

Sewing methods in **BOLD TYPE** have Sewing Tutorial Video available.

Scan **QR CODE** to watch videos:

**DART** - see Darts: "sewing flat dart" video.

**BELT LOOP/CARRIER** - see Loops and Straps: "how to sew belt loops" video.

**EDGESTITCH** - see Machine Stitches: "how to edgestitch" video.

**STAYSTITCH** - see Machine Stitches: "how to do stay-stitching" video.

**TOPSTITCH** - see Machine Stitches: "how to topstitch" video.

**UNDERSTITCH** - see Machine Stitches: "how to understitch" video.

**FINISH** - see Seams: "how to finish seam allowances" video.

**SLIPSTITCH** - Slide needle through a folded edge, then pick up a thread of underneath fabric.

## SEWING TUTORIALS



Build your skills viewing short, easy-to-follow videos at [simplicity.com/sewingtutorials](http://simplicity.com/sewingtutorials)

PATTERN PIECES WILL BE IDENTIFIED BY NUMBERS THE FIRST TIME THEY ARE USED.

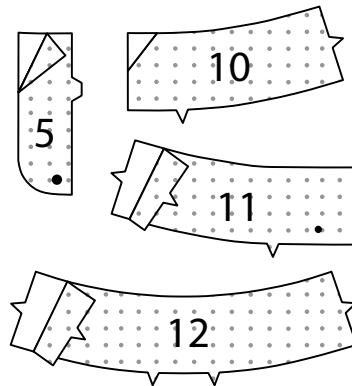
**STITCH SEAMS WITH RIGHT SIDES TOGETHER UNLESS OTHERWISE STATED.**

**NOTE:** Under each sub-heading, the first view will be illustrated, unless otherwise illustrated.

## SHORTS A, PANTS B, C

## INTERFACING

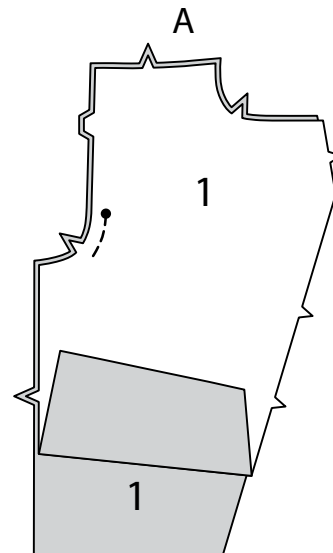
**1.** Trim corners of **INTERFACING**, as shown. Fuse interfacing to wrong side of each matching **FABRIC** section, following manufacturer's instructions.



## FRONT

**Construct fly front as follows:**

**2.** Stitch **FRONT** (1) sections together at center front between large dot and notch.



**3. B-** Turn in left front opening edge along foldline; press.

**C-** Place closed zipper (face up) under left front opening edge, having pressed edge close to zipper teeth and zipper stop at small dot. Using a zipper foot, baste close to pressed edge.

**NOTE:** zipper will extend above upper edge.

**D-** With right sides together, fold **LEFT FLY** (6) in half lengthwise, matching dots and notches. Stitch lower edge. Trim. Turn. Press. Baste raw edges.

**E-** On inside, pin left fly to left front opening edge (over zipper), matching notches and small dots, having raw edges even. Baste along previous basting for zipper.

**F-** On outside, using a zipper foot, stitch close to pressed edge of front through all layers

**G- FINISH** long unnotched edge of **RIGHT FLY FACING** (5). Pin right fly facing to right front opening edge, matching notches and large dots. Stitch, ending at large dot; trim.

**UNDERSTITCH** right fly facing.

**H-** Turn right fly facing to inside.

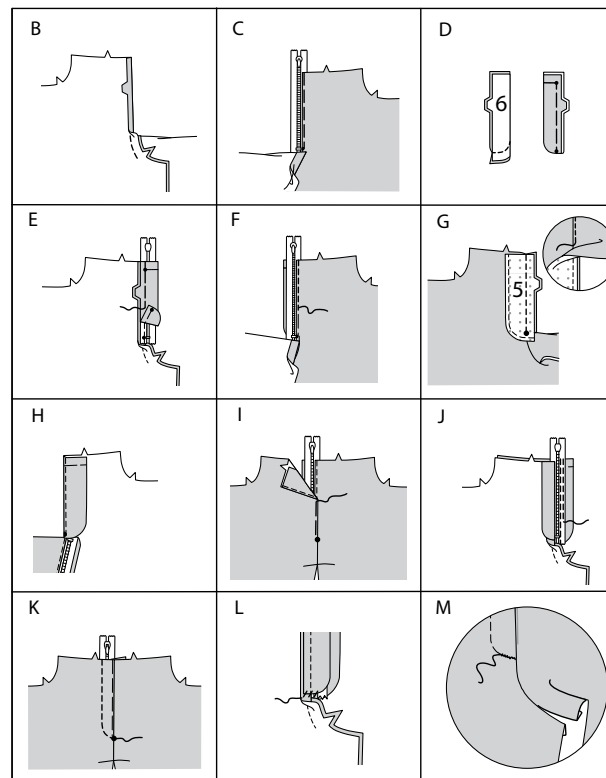
**I-** Lap right front over left, matching centers. Baste close to edge, through all thicknesses.

**J-** Pin left fly out of the way. Open out right fly facing. Pin remaining zipper tape to right fly facing, keeping right front free. Using a zipper foot, stitch in place close to zipper teeth and along center of zipper tape.

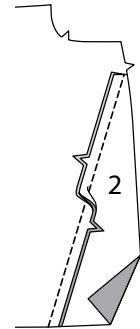
**K-** Turn right fly facing down. On outside, stitch right front along stitching line, keeping left fly free.

**L-** Turn right fly facing back in place. On inside, hand tack left and right fly facing together at lower edge, as shown. Trim away excess zipper tape even with lower edge of fly, if needed.

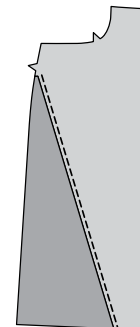
**M-** If desired, on outside, machine-stitch a bar-tack across lower end of fly through all thicknesses.



**4.** Pin **SIDE FRONT** (2) to front at side edge, matching notches; stitch. Press seam allowances toward front.

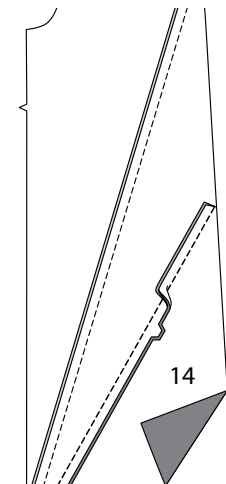


**5.** For **Views A, C:** **TOPSTITCH** front along seam.

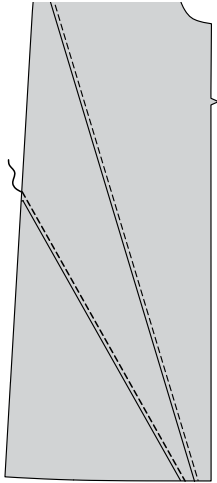


## VIEWS B, C

**6.** Pin one **LOWER FRONT AND BACK** (14) section to lower side front, matching notches; stitch. Press seam allowances toward front. (Save two lower front and back sections for back.)

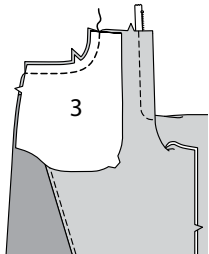


7. For **View C**: **TOPSTITCH** side front along seam.

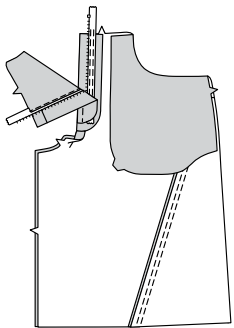


#### POCKETS

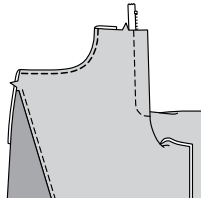
8. Stitch **POCKET FACING** (3) to upper side edge of front; trim seam.



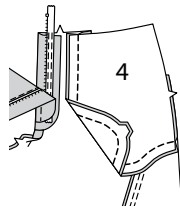
9. Turn pocket facing to inside; press.



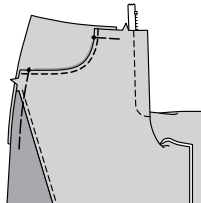
10. **TOPSTITCH** upper side edge of front.



11. Stitch one **SIDE FRONT AND POCKET** (4) section to each pocket facing at outer edge, matching notches, keeping front free.

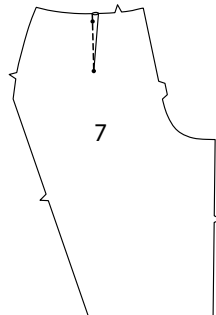


12. Baste upper and side edges, matching notches and dots.

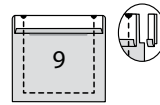


#### BACK

13. Stitch dart in **BACK** (7). Press fold of darts toward center.



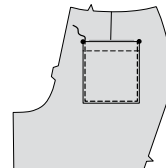
14. Press under 1/4" (6mm) on upper edge of **BACK POCKET** (9). Turn upper edge to outside along foldline, forming facing. Stitch along seam line on raw edges. Trim seam allowance in the facing area to 1/4" (6mm).



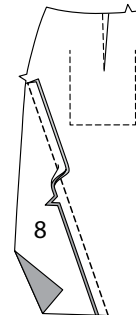
15. Turn corners **RIGHT** side out, turning facing to the **WRONG** side; press, pressing under raw edges along stitching. Stitch facing close to inner edge.



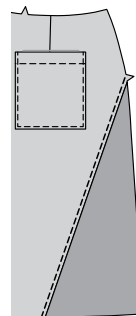
16. On outside, pin pocket to back, matching dots. Stitch close to sides and lower edge.



17. Pin **SIDE BACK** (8) to back at side edge, matching notches; stitch. Press seam allowances toward back.

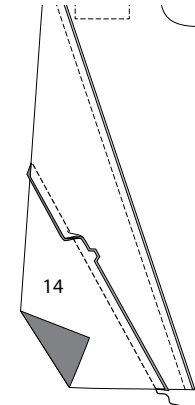


18. For **Views A, C**: **TOPSTITCH** back along seam.

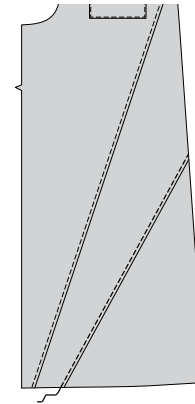


#### VIEWS B, C

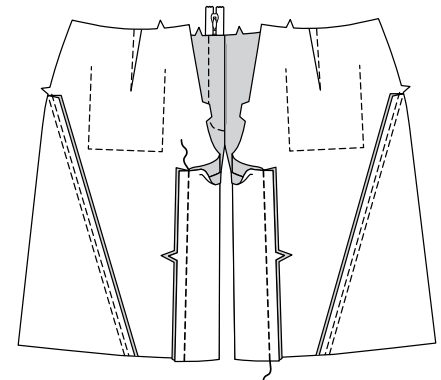
19. Pin one remaining lower front and back (14) section to lower side back, matching notches; stitch. Press seam allowances toward back.



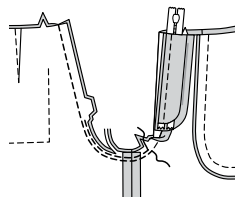
20. For **View C**: **TOPSTITCH** side back along seam.



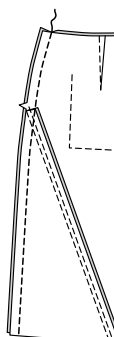
21. With right sides together, stitch back to front at inner leg edges.



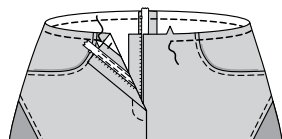
**22.** Stitch remainder of crotch seam, connecting with previous stitching. Stitch again 1/4" (6mm) away in seam allowance along curve, as shown. Trim close to second stitching.



**23.** Stitch back to front at sides.



**24. STAYSTITCH** upper edge of garment between front notches.

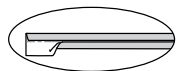


#### CARRIERS AND WAISTBAND

**25.** Fold CARRIER (13) in half lengthwise with wrong sides together. Press, setting in a crease.

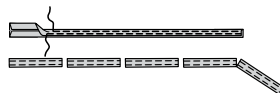


**26.** Open out long edges of carrier and turn them to wrong so that they meet at the crease; press.



**27.** Fold carrier in half lengthwise, bringing pressed edges together. Stitch close to both long edges.

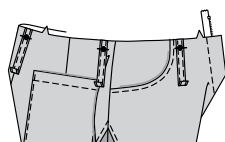
Cut carriers into five sections, each 3-3/4" (9.5cm) long.



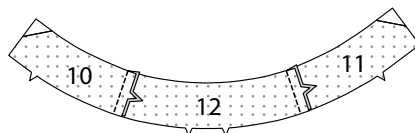
**28.** Turn in 5/8" (1.5cm) on one end of each carrier; press. Trim pressed seam allowance to 1/4" (6mm).



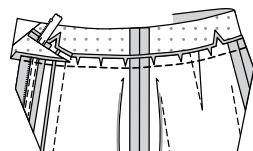
**29.** On outside, pin carriers to upper edge of garment, centering over large dots and center back, having raw edges even, as shown. Baste.



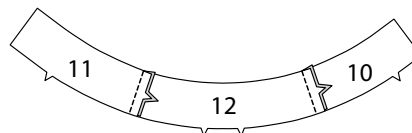
**30.** Stitch interfaced RIGHT FRONT WAISTBAND (10) and interfaced LEFT FRONT WAISTBAND (11) to interfaced BACK WAISTBAND (12) at sides. (Uninterfaced waistband sections will be used as facing.)



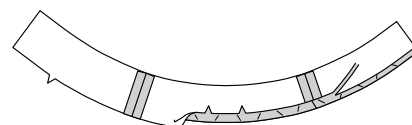
**31.** With right sides together, pin waistband to upper edge of garment, matching notches, centers, side seams and left dots, clipping garment where necessary. (Front edges of waistband extend 5/8" (1.5cm). Make sure zipper pull is below waistband. Trim seam, trimming away excess zipper. Press seam toward waistband.



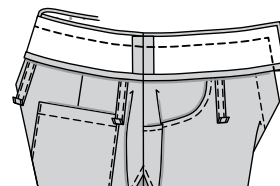
**32.** Stitch right front waistband FACING (10) and left front waistband FACING (11) to back waistband FACING (12) at sides.



**33.** Press under 5/8" (1.5cm) on notched edge of waistband facing; easing in fullness. Trim pressed edge to 3/8" (1cm).



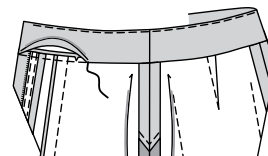
**34.** With right sides together, pin facing to waistband, matching centers and seams. Stitch ends and upper edge; trim seams.



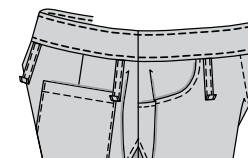
**35. UNDERSTITCH** upper edge of facing as far as possible.

Turn facing to inside; press.

**SLIPSTITCH** pressed edge over seam.

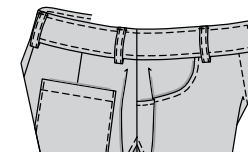


**36. TOPSTITCH** all edges of waistband.



**37.** Turn carriers up. Pin to upper edge of waistband, centering over large dots and center back, having pressed ends even with finished edge, as shown.

**EDGESTITCH** in place, through all thicknesses.

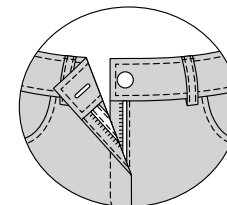


#### FINISHING

##### BUTTONHOLE AND BUTTON

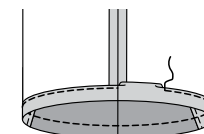
**38.** Make buttonhole in right front waistband at marking.

Sew button to left front waistband at dot.



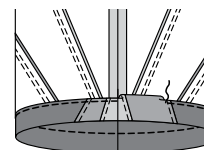
#### HEMS

**39.** For **View A:** Press up 1-1/4" (3.2cm) hem on lower edge of shorts. Press under 1/4" (6mm) on raw edge. Stitch close to inner pressed edge.



**40.** For **Views B, C:** Press up 1-3/4" (4.5cm) hem on lower edge of pants.

Press under 1/4" (6mm) on raw edge. Stitch close to inner pressed edge.





# Congrats!

You've completed your sewing adventure

---

## SHARE YOUR LOOK



Post your pattern and tag us  
**@simplicity\_creative\_group** and **#mccallspatterns**  
for a chance to be featured on our social media.

Look for more PDF patterns at **simplicity.com**

Have a question or need help with your sewing project call us at  
1-800-782-0323



McCall's ©2023 a division of IG Design Group Americas Inc. • Atlanta, GA 30342 USA [www.thedesigngroup.com](http://www.thedesigngroup.com) • All Rights Reserved. [www.mccall.com](http://www.mccall.com) • Made in the U.S.A. Fabriqué aux États-Unis.  
To be used for individual private home use only and not for commercial or manufacturing purposes. • A usage privé seulement et non à des fins commerciales ou de production en série. • Para uso privado solamente, no se puede utilizar con propósitos de comercialización o de producción en serie.