



Average												
<b>MISSES' DRESS WITH SLEEVE AND HEMLINE VARIATIONS</b>												
<b>Suggested Fabrics:</b> Challis, Crepe de Chine, Crepes, Stable Knits. <b>Interfacing:</b> Lightweight Fusible.												
<b>Notions:</b> A,B,C: One 14" (36cm) invisible zipper. <b>Also for B:</b> 1 yd. (1.0m) of ½" (1.3cm) elastic.												
<b>Sizes</b>	<b>6</b>	<b>8</b>	<b>10</b>	<b>12</b>	<b>14</b>	<b>16</b>	<b>18</b>	<b>20</b>	<b>22</b>	<b>24</b>		
<b>European</b>	<b>32</b>	<b>34</b>	<b>36</b>	<b>38</b>	<b>40</b>	<b>42</b>	<b>44</b>	<b>46</b>	<b>48</b>	<b>50</b>		
<b>BODY MEASUREMENTS: Select pattern size based on body measurements</b>												
<b>Bust</b>	30½	31½	32½	34	36	38	40	42	44	46	Ins.	
<b>Waist</b>	23	24	25	26½	28	30	32	34	37	39	"	
<b>Hip-9" below waist</b>	32½	33½	34½	36	38	40	42	44	46	48	"	
<b>Back-neck to waist</b>	15½	15¾	16	16¼	16½	16¾	17	17¼	17½	17¾	"	
<b>Interfacing A,B,C</b>												
20"- 1¼ yds.												
<b>Dress A</b>												
60**	1%	1%	2	2	2½	2¼	2¼	2¾	2½	2½	Yds.	
<b>Contrast A (Upper Front and Sleeve, Upper Back and Sleeve, Neckband, Sleeve Flounce)</b>												
50**	1½	1½	1¾	1¾	1¾	1¾	1¾	1¾	1¾	2	Yds.	
<b>Dress B</b>												
60**	2½	2½	2¾	2¾	2¾	3	3	3½	3¼	Yds.		
<b>Dress C</b>												
50**	2¼	2¼	2¼	2¾	2¾	2¾	2½	2½	2½	2¾	Yds.	
<b>FINISHED GARMENT MEASUREMENTS (Includes Design and Wearing Ease)</b>												
<b>A,B,C Waist</b>	28	29	30	31½	33½	35½	37½	39½	41½	43½	Ins.	
<b>A,B,C Hip</b>	35½	36½	37½	39	41	43	45	47	49	51	"	
<b>Width, lower edge</b>												
<b>Dress C</b>	57	58	59	60½	62½	64½	66½	68½	70½	72½	Ins.	
<b>Finished back length from base of neck</b>												
<b>Dress A,B,C</b>	47½	47¾	48	48¼	48½	48¾	49	49¼	49½	49¾	Ins.	

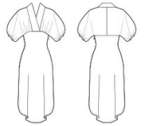
\*with nap \*\*without nap

Moins Facile												
<b>ROBE AVEC VARIATIONS DE MANCHES ET D'OURLET POUR JEUNES FEMMES</b>												
<b>Tissu Conseillé:</b> Challis, Crêpe de Chine, Crêpes, Tricotés stables. <b>Entoilage:</b> thermocollant léger.												
<b>Mercurie:</b> A,B,C: 1 fermeture à glissière invisible de 36cm. <b>Aussi pour B:</b> 1.0m d'élastique de 1.3cm.												
<b>Tailles</b>	<b>6</b>	<b>8</b>	<b>10</b>	<b>12</b>	<b>14</b>	<b>16</b>	<b>18</b>	<b>20</b>	<b>22</b>	<b>24</b>		
<b>Françaises</b>	<b>34</b>	<b>36</b>	<b>38</b>	<b>40</b>	<b>42</b>	<b>44</b>	<b>46</b>	<b>48</b>	<b>50</b>	<b>52</b>		
<b>Européen</b>	<b>32</b>	<b>34</b>	<b>36</b>	<b>38</b>	<b>40</b>	<b>42</b>	<b>44</b>	<b>46</b>	<b>48</b>	<b>50</b>		
<b>MESURES DU CORPS: Choisissez la taille du patron basée sur les mesures du corps</b>												
<b>Poitrine</b>	78	80	83	87	92	97	102	107	112	117	cm	
<b>Taille</b>	58	61	64	67	71	76	81	87	94	99	"	
<b>Hanches (23cm au-dessous de la taille)</b>												
	83	85	88	92	97	102	107	112	117	122	cm	
<b>Dos du cou à la taille</b>	39.5	40	40.5	41.5	42	42.5	43	44	44.5	45	"	
<b>Entoilage A,B,C</b>												
51cm- 1.1m												
<b>Robe A</b>												
150cm*	1.7	1.7	1.8	1.8	1.9	2.1	2.1	2.2	2.3	2.3	m	
<b>Contraste A (Devant supérieur et manche, dos supérieur et manche, bande de col, volant de manche)</b>												
150cm*	1.4	1.4	1.4	1.5	1.5	1.6	1.6	1.7	1.7	1.8	m	
<b>Robe B</b>												
150cm*	2.3	2.3	2.4	2.4	2.5	2.6	2.7	2.7	2.9	3.0	m	
<b>Robe C</b>												
150cm*	2.1	2.1	2.1	2.2	2.2	2.2	2.2	2.3	2.3	2.4	m	
<b>MESURES DES VÊTEMENTS FINI (Motif et aisance de port compris)</b>												
<b>A,B,C Taille</b>	71	74	76	80	85	90	95	100	105	110	cm	
<b>A,B,C Hanches</b>	90	93	95	99	104	109	114	119	124	130	"	
<b>Largeur à l'ourlet</b>												
<b>Robe C</b>	145	147	150	154	159	164	169	174	179	184	cm	
<b>Longueur finie – dos, votre nuque à l'ourlet</b>												

\*avec sens \*\*sans sens



A



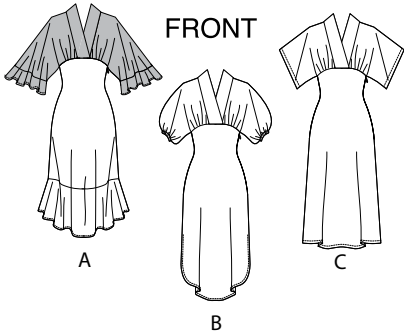
B



C



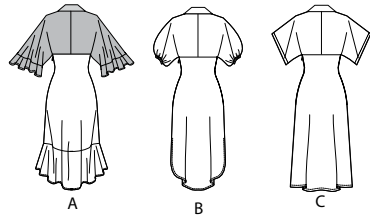
C



FRONT

B

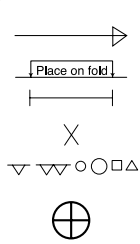
BACK



A

B

C



**PATTERN MARKINGS**

**GRAINLINE:** Place on straight grain of fabric, parallel to selvage or fold.  
**FOLDLINE:** Place line on fold of fabric.  
**BUTTONHOLE MARKING:** Indicates exact length and placement of buttonholes.  
**BUTTON MARKING:** Indicates button placement.  
**NOTCHES AND SYMBOLS:** For matching seams and construction details.  
 Indicates the Bustline, Waistline, Hip and/or Biceps. Measurements refer to circumference of Finished Garment (Body Measurement + Wearing Ease + Design Ease). Adjust pattern if necessary. The measurement excludes pleats, tucks, darts and seam allowances.  
**SEAM ALLOWANCE:** 5/8" (1.5cm) included unless otherwise indicated, but not printed on tissue.

**ADJUST IF NECESSARY**

Lengthen or Shorten at adjustment lines (==) or where indicated on pattern. If substantial length is added, you may need to purchase additional fabric.  
**TO SHORTEN:** Crease along adjustment line. Make a fold half the amount needed. Tape in place.  
**TO LENGTHEN:** Slash between adjustment lines. Spread amount as needed, keeping edges parallel. Tape over paper.  
 When Alteration lines are not on tissue, lengthen or shorten at lower edge.

**SHRINK FABRIC** if not labeled pre-shrunk. Press.  
**CIRCLE LAYOUT** for View, Size, Fabric Width.  
 Use **WITH NAP** layout for fabrics with one-way designs, nap, pile or surface shading. Because most knits have surface shading, a with nap layout is used.  
 For **DOUBLE THICKNESS (WITH FOLD)** - fold fabric with right sides together.  
**\* DOUBLE THICKNESS (WITHOUT FOLD)** - For fabrics with nap, fold fabric crosswise, right sides together. Mark as shown. Cut along crosswise fold of fabric (A). Turn upper layer 180° so arrows go in same direction and place over lower layer, right sides together (B).  
 For **SINGLE THICKNESS** - place fabric right side up. (For Fur Pile fabrics, place pile side down.)

**CUTTING AND MARKING**

★ Cut other pieces first, allowing enough fabric to cut this piece. Open fabric. For "Cut 1" pieces, cut piece once on single layer of fabric with piece face up on right side of fabric.  
 Pattern may have cutting lines for several sizes. Select the proper cutting line or pattern pieces for your size.  
 Before **CUTTING** place all pieces on fabric according to layout. Pin. (Layouts show approximate position of pattern pieces; position may vary according to your pattern size.) Cut **ACCURATELY**, cutting notches outward.  
 Before removing pattern, **TRANSFER MARKINGS** and lines of construction to Wrong Side of fabric, using the Pin and Chalk Pencil method or Tracing Paper and Dressmaker Wheel. Markings needed on right side of fabric should be thread traced.  
**NOTE:** Broken-line boxes (a! b! c!) in layouts represent pieces cut by measurements provided.

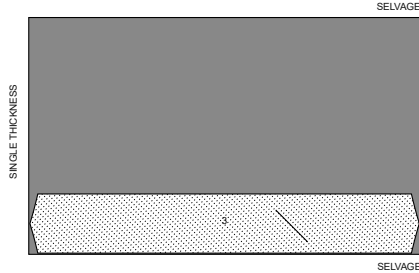
**CUTTING LAYOUTS**

RIGHT SIDE OF PATTERN	WRONG SIDE OF PATTERN	RIGHT SIDE OF FABRIC	WRONG SIDE OF FABRIC
-----------------------	-----------------------	----------------------	----------------------

**INTERFACING A,B,C**

use piece: 3

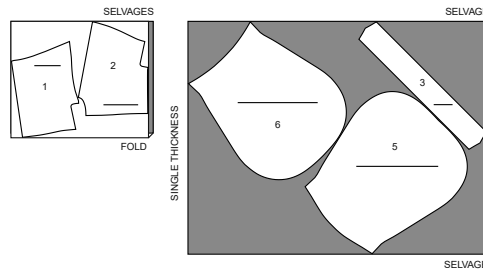
20" (51 cm)  
all sizes



**DRESS B**

use pieces: 1,2,3,5,6

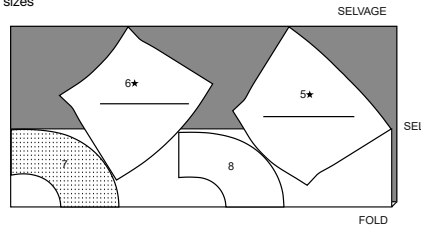
60" (150 cm)  
with nap  
all sizes



**DRESS A**

use pieces: 5,6,7,8

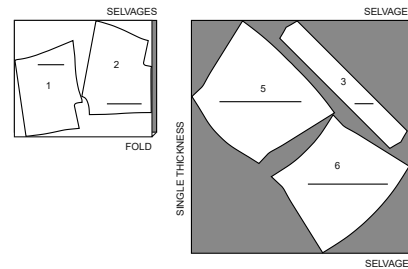
60" (150 cm)  
with nap  
all sizes



**DRESS C**

use pieces: 1,2,3,5,6

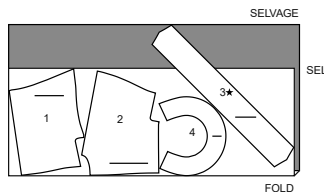
60" (150 cm)  
with nap  
all sizes



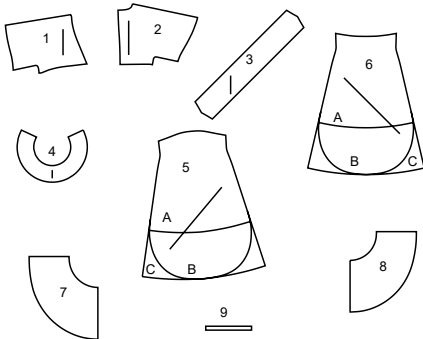
**CONTRAST A**

use pieces: 1,2,3,4

60" (150 cm)  
with nap  
all sizes



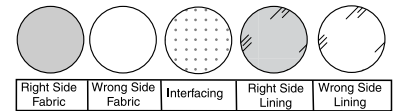
**9 PATTERN PIECES**



- 1 UPPER FRONT AND SLEEVE - A,B,C
- 2 UPPER BACK AND SLEEVE - A,B,C
- 3 NECK BAND - A,B,C
- 4 SLEEVE FLOUNCE - A
- 5 LOWER FRONT - A,B,C
- 6 LOWER BACK - A,B,C
- 7 FRONT FLOUNCE - A
- 8 BACK FLOUNCE - A
- 9 ELASTIC GUIDE FOR SLEEVE - B

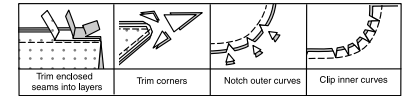
**SEWING INFORMATION**

**FABRIC KEY**



**SEAM ALLOWANCES**

Use 5/8" (1.5cm) seam allowances unless otherwise indicated.



**PIN AND FIT**

Pin or baste seams, **RIGHT SIDE TOGETHER**, matching notches. Fit garment before stitching major seams.

**PRESS**

Press seam allowances flat; then open unless otherwise stated. Clip where necessary so they lie flat.

**GLOSSARY**

Sewing methods in **BOLD TYPE** have Sewing Tutorial Video available. Scan QR CODE to watch videos:

- EASE/GATHER** - see **sewing two row gathers** video
- NARROW HEM** - see **sewing narrow hems** video
- STAYSTITCH** - see **how to do stay-stitching** video
- STITCH IN THE DITCH** - see **how to stitch in the ditch** video
- TOPSTITCH** - see **how to topstitch** video
- UNDERSTITCH** - see **how to understitch** video

**SEWING TUTORIALS**



Build your skills viewing short, easy-to-follow videos at [simplicity.com/sewingtutorials](http://simplicity.com/sewingtutorials)

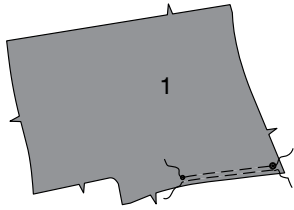
# SEWING DIRECTIONS

DRESS A, B, C

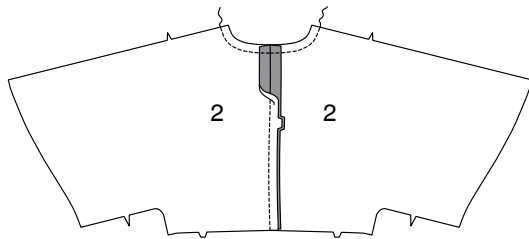
**NOTE:** Under each sub-heading, the first View will be illustrated, unless otherwise indicated.

## UPPER FRONT AND BACK

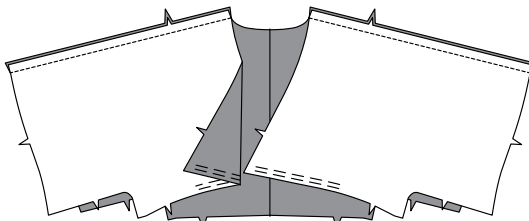
**1.** GATHER lower edge of UPPER FRONT AND SLEEVE (1) between small and large dot.



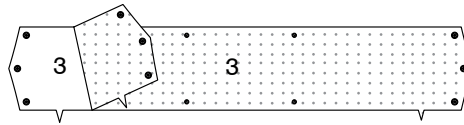
**2.** Stitch UPPER BACK AND SLEEVE (2) sections together at center back. STAYSTITCH neck edge.



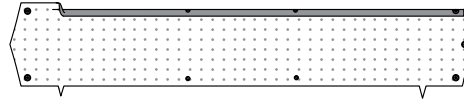
**3.** Pin upper front and sleeve sections to upper back and sleeves at shoulder and overarm edges, as shown. Stitch.



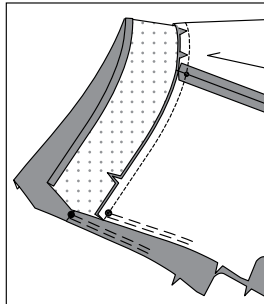
**4.** Pin INTERFACING (3) to wrong side of NECK BAND (3). Fuse, following manufacturer's instructions.



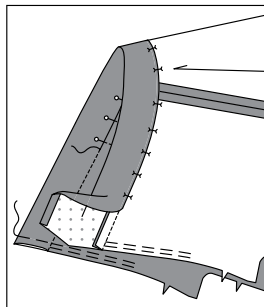
**5.** Turn in 1/2" (1.3cm) on long unnotched edge of neck band. Press.



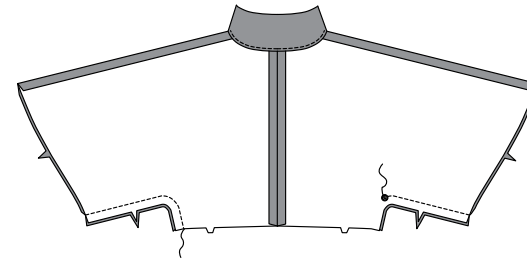
**6.** Pin neck band to front opening and neck edges, matching large dots and notches, placing small dots at shoulder seams, clipping back neck edge where necessary. Stitch. Trim. Press seam toward neck band.



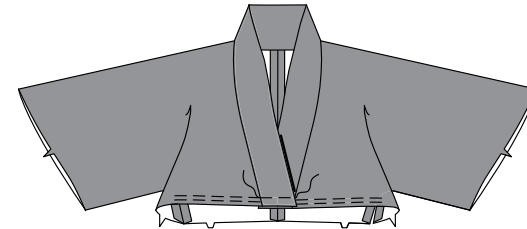
**7.** With wrong sides together, fold neck band along foldline. Press. STITCH IN THE DITCH. Baste raw edges.



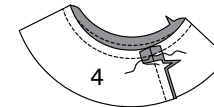
**8.** Stitch front to back at sides and underarm seams, leaving left side open below large dot.



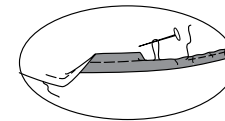
**9.** Lap right front over left, matching centers. Baste across lower edges.



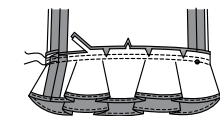
**View A:**  
**10.** Stitch ends of SLEEVE FLOUNCE (4) together. STAYSTITCH inner edge of sleeve flounce.



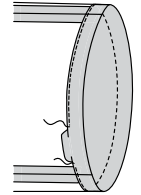
**11.** Stitch 1/4" (6mm) from lower edge of flounce, using long machine stitches. Turn up 5/8" (1.5cm) hem, turning in 1/4" (6mm) on raw edge. Pull thread to ease in fullness. Stitch. Press.



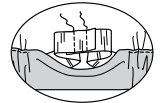
**12.** Pin flounce to lower edge of sleeve, placing small dot at overarm seam, matching remaining seams, clipping flounce where necessary. Stitch. Stitch again 1/4" (6mm) away in seam allowance. Trim close to second stitching. Press seam toward sleeve.



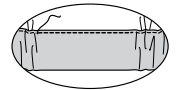
**View B:**  
**13.** To form casing for elastic, turn 7/8" (2.2cm) on lower edge of sleeve to inside, turning in 1/4" (6mm) on raw edge; press. Stitch, as shown, leaving an opening.



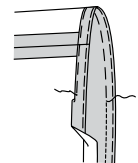
**14.** Cut elastic, the length of ELASTIC GUIDE FOR SLEEVE (9). Insert elastic through opening. Lap ends; hold with safety pin. Stitch ends of elastic securely.



**15.** Stitch opening, stretching elastic while stitching.



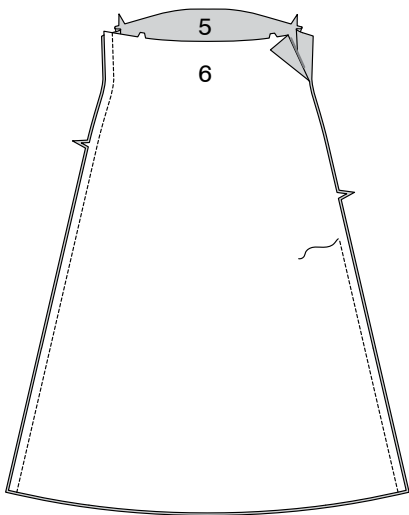
**View C:**  
**16.** Turn up 1" (2.5cm) sleeve hem. Baste close to fold. Turn in 1/4" (6mm) on raw edge. Baste hem in place close to upper edge. Press. TOPSTITCH hem along upper basting.



LOWER FRONT AND BACK

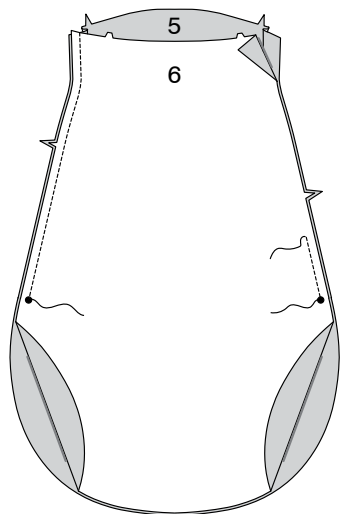
Views A, C:

17. Stitch LOWER FRONT (5) and LOWER BACK (6) together at sides, leaving left side open from 3" (7.5cm) below notch to upper edge.



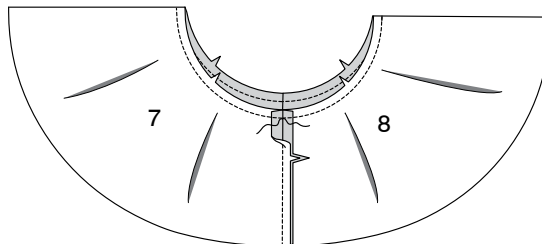
View B:

18. Stitch lower front and lower back together at sides, leaving open below large dots and left side open from 3" (7.5cm) below notch to upper edge, as shown.

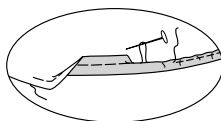


View A:

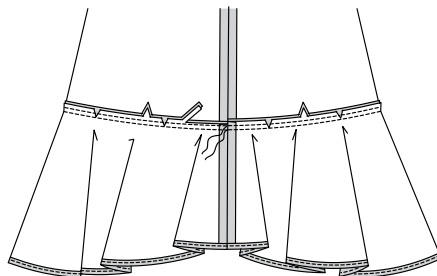
19. Stitch FRONT FLOUNCE (7) to BACK FLOUNCE (8) at side edges. STAYSTITCH inner edge of flounce.



20. Stitch 1/4" (6mm) from lower edge of flounce, using long machine stitches. Turn up 5/8" (1.5cm) hem, turning in 1/4" (6mm) on raw edge. Pull thread to ease in fullness. Stitch. Press.

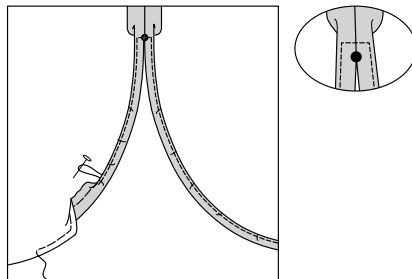


21. Pin flounce to lower edge of lower front and back, matching notches and seams, clipping flounce where necessary. Stitch. Stitch again 1/4" (6mm) away in seam allowance. Trim close to second stitching. Press seam up.



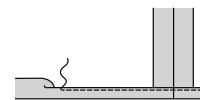
View B:

22. Stitch 1/4" (6mm) from lower edges of lower front and back, using long machine stitches. Turn up 5/8" (1.5cm) hem, turning in 1/4" (6mm) on raw edge. Pull thread to ease in fullness. Stitch, tapering hem to nothing above large dots. Pivot across seams 1/4" (6mm) above large dots when stitching. Press.



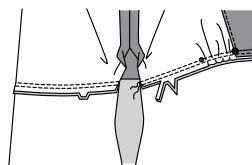
View C:

23. Make NARROW HEM at lower edge of lower front and back.



FINISHING

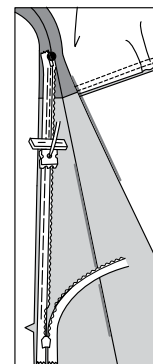
24. Pin lower front and back to upper front and back, matching centers, symbols and seams. Adjust gathers; baste. Stitch. Stitch again 1/4" (6mm) away in seam allowance. Trim close to second stitching. Press seam down.



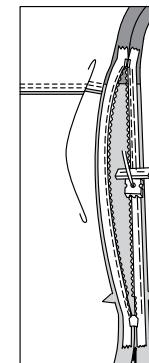
NOTE: The zipper is longer than the zipper opening and will be adjusted after the zipper is inserted.

NOTE: Stitch the invisible zipper using an invisible zipper foot.

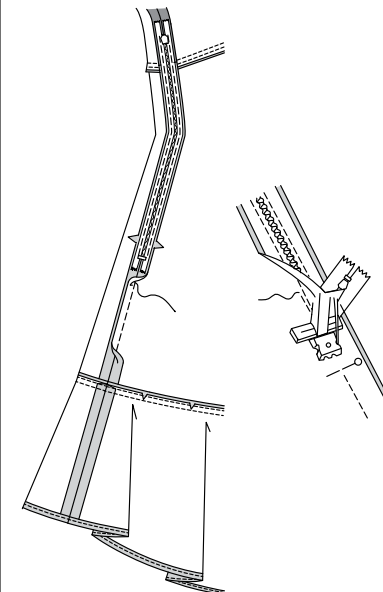
25. Open the zipper and press the tape using a cool iron. On OUTSIDE, pin RIGHT side of the zipper face down on the RIGHT side of the zipper opening. Have the coil along the seam line, the tape within the seam allowance and the top stop at large dot, as shown. Hand-baste along center of the tape. Position zipper foot at the top of the zipper with RIGHT groove of the foot over coil. Stitch along tape to notch, keeping dress free. Back-stitch to reinforce.



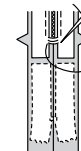
26. Pin the remaining half of the zipper to the LEFT side of the zipper opening in same manner. Hand-baste along the center of the tape. Position zipper foot at the top of the zipper with LEFT groove over the coil. Stitch along tape to notch, keeping dress free. Back-stitch to reinforce.



27. Close zipper and check that it is invisible from the OUTSIDE. Pull the free ends of the zipper tape away from the seam allowance. Pin remaining left side seam together below zipper. Position zipper foot all the way to the LEFT so the needle goes down through the outer notch of the foot. Start stitching seam 1/4" (6mm) above lowest stitch and slightly to the LEFT. Stitch remainder of seam, connecting with previous stitching.



28. If the zipper is longer than the opening, using a strong thread, hand-sew a few small stitches across ends of coils at end of opening. Trim away lower end of zipper tape to within 5/8" (1.5cm) of hand-stitches.





# Congrats!

You've completed your sewing adventure

---

## SHARE YOUR LOOK



Post your pattern and tag us  
**@simplicity\_creative\_group** and **#mccallspatterns**  
for a chance to be featured on our social media.

Look for more PDF patterns at **simplicity.com**

Have a question or need help with your sewing project call us at  
1-800-782-0323

**McCall's**  
by design...