



Scan QR code for a Sew-Along video tutorial.
Scannez le code QR pour un didacticiel vidéo de couture.



WOMEN'S DRESS WITH SLEEVE AND LENGTH VARIATIONS

Suggested Fabrics: Cotton Blends, Linen, Poplin, Stable Knits. **Interfacing:** Lightweight Fusible.

Notions: A,B,C: One 12" (30cm) invisible zipper (adjust to fit), one 7" (18cm) invisible zipper. **Also for A:** Four 5/8" (1.5cm) buttons.

Sizes	20W	22W	24W	26W	28W	30W	32W	34W	36W	38W
European	46	48	50	52	54	56	58	60	62	64

BODY MEASUREMENTS: Select pattern size based on body measurements

Bust	42	44	46	48	50	52	54	56	58	60	Ins.
Waist	35	37	39	41½	44	46½	49	51½	53	54½	"
Hip-9" below waist	44	46	48	50	52	54	56	58	60	62	"
Back-neck to waist	17¼	17¾	17½	17¾	17¾	17¾	18	18½	18¼	18¾	"

Dress A	45**	3¼	3¼	3¼	3¼	3¼	3¾	4	4	4¼	Yds.
	60**	2¾	2½	2½	2½	2¾	2¾	2¾	3	3	"

Interfacing A	20"	1	1	1½	1½	1½	1½	1¼	1¼	1¼	"
----------------------	-----	---	---	----	----	----	----	----	----	----	---

Dress B	45**	3¼	3¾	3¾	3½	3½	4¾	4¾	4½	4½	Yds.
	60**	2¾	2¾	2¾	2¾	2¾	3	3¾	3¾	3¾	"

Interfacing B,C	20"	¾	¾	¾	¾	¾	¾	1	1	1	Yd.
------------------------	-----	---	---	---	---	---	---	---	---	---	-----

Dress C	45**	3¾	3½	3½	3½	3¾	4	4	4	4¼	Yds.
	60**	2½	2½	2¾	2¾	2¾	2¾	2¾	2¾	2¾	"

FINISHED GARMENT MEASUREMENTS (Includes Design and Wearing Ease)

A,B,C Bust	44	46	48	50	52	54	56	58	60	62	Ins.
A,B,C Hip	49½	51½	53½	55½	57½	59½	61½	63½	65½	67½	"

Width, lower edge

Dress A	63½	65½	67½	69½	71½	73½	75½	77½	79½	81½	Ins.
Dress B	73½	75½	77½	79½	81½	83½	85½	87½	89½	91½	"

Finished back length from base of neck

Dress A	38¼	38½	38¾	39	39¼	39½	39¾	40	40¼	40½	Ins.
Dress B,C	46¼	46½	46¾	47	47¼	47½	47¾	48	48¼	48½	"

*with nap **without nap

Average

ROBE AVEC VARIATIONS DE MANCHES ET LONGUEURS POUR FEMMES

Tissus Consigliés: Cotonnades, Toile de lin, Popeline, Tricotés Stables. **Entoilage:** Thermocollant léger.

Mercerie: A,B,C: 1 fermeture à glissière invisible de 30cm (adaptez pour ajuster), 1 fermeture à glissière invisible de 18cm. **Aussi pour A:** 4 boutons de 1.5cm.

Tailles	20W	22W	24W	26W	28W	30W	32W	34W	36W	38W
Françaises	48	50	52	54	56	58	60	62	64	66
Européen	46	48	50	52	54	56	58	60	62	64

MESURES DU CORPS: Choisissez la taille du patron basée sur les mesures du corps

Poitrine	107	112	117	122	127	132	137	142	147	152	cm
Taille	89	94	99	105	112	118	124	130	134	138	"

Hanches (23cm au-dessous de la taille)

	112	117	122	127	132	137	142	147	152	157	cm
Dos du cou à la taille	44	44	44,5	45	45	45,5	46	46	46,5	47	"

Robe A	115cm*	2.9	3.0	3.0	3.0	3.0	3.5	3.5	3.7	3.7	3.8	m
	150cm*	2.2	2.2	2.3	2.3	2.3	2.6	2.6	2.6	2.7	2.7	"

Entoilage A	51cm	0.9	0.9	0.9	1.0	1.0	1.0	1.0	1.1	1.1	1.1	"
--------------------	------	-----	-----	-----	-----	-----	-----	-----	-----	-----	-----	---

Robe B	115cm*	3.0	3.1	3.1	3.1	3.2	4.0	4.0	4.0	4.1	4.1	m
	150cm*	2.3	2.3	2.4	2.4	2.4	2.4	2.7	2.7	2.9	2.9	"

Entoilage B,C	51cm	0.7	0.8	0.8	0.8	0.8	0.8	0.8	0.8	0.9	0.9	m
----------------------	------	-----	-----	-----	-----	-----	-----	-----	-----	-----	-----	---

Robe C	115cm*	3.1	3.2	3.2	3.2	3.2	3.2	3.5	3.7	3.7	3.8	m
	150cm*	2.3	2.3	2.3	2.4	2.4	2.4	2.6	2.6	2.6	2.6	"

MESURES DES VÊTEMENTS FINI (Motif et aisance de port compris)

A,B,C Poitrine	112	117	122	127	132	137	142	147	152	157	cm
A,B,C Hanches	126	131	136	141	146	151	156	161	166	171	"

Largeur à l'ourlet

Robe A	161	166	171	177	182	187	192	197	202	207	cm
Robe B	187	192	197	202	207	212	217	222	227	232	"

Longueur finie – dos, votre nuque à l'ourlet

Robe A	97	98	98	99	100	100	101	102	102	103	cm
Robe B,C	117	118	119	119	120	121	121	122	123	123	"

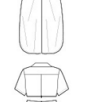
*avec sens **sans sens



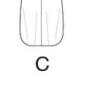
A



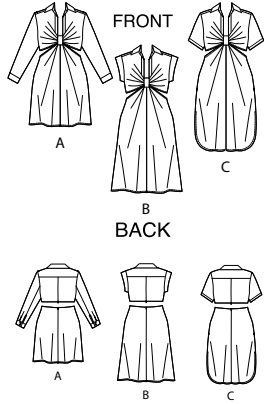
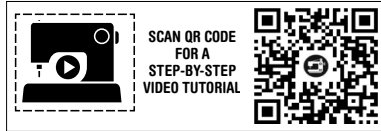
A



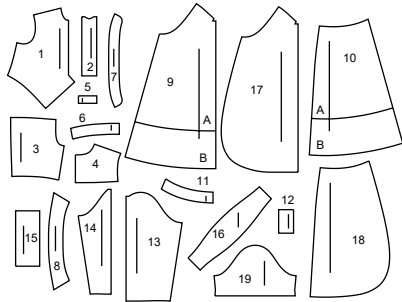
A



A



19 PATTERN PIECES



- 1 Bodice Front-A,B,C
- 2 Placket-A,B,C
- 3 Bodice Back-A,B,C
- 4 Yoke Back-A,B,C
- 5 Front Facing-A,B,C
- 6 Bodice Back Facing-A,B,C
- 7 Collar Band-A,B,C
- 8 Collar -A,B,C
- 9 Skirt Front-A,B
- 10 Skirt Back-A,B
- 11 Skirt Back Facing-A,B,C
- 12 Knot-A,B,C
- 13 Sleeve Front-A
- 14 Sleeve Back-A
- 15 Cuff-A
- 16 Sleeve-B
- 17 Skirt Front-C
- 18 Skirt Back-C
- 19 Sleeve-C

PATTERN MARKINGS

GRAINLINE: Place on straight grain of fabric, parallel to selvage or fold.
FOLDLINE: Place line on fold of fabric.
BUTTONHOLE MARKING: Indicates exact length and placement of buttonholes.
BUTTON MARKING: Indicates button placement.
NOTCHES AND SYMBOLS: For matching seams and construction details.
 Indicates the Bustline, Waistline, Hip and/or Biceps. Measurements refer to circumference of Finished Garment (Body Measurement + Wearing Ease + Design Ease). Adjust pattern if necessary. The measurement excludes pleats, tucks, darts and seam allowances.
SEAM ALLOWANCE: 5/8" (1.5cm) included unless otherwise indicated, but not printed on tissue.

ADJUST IF NECESSARY

Lengthen or Shorten at adjustment lines (==) or where indicated on pattern. If substantial length is added, you may need to purchase additional fabric.
TO SHORTEN: Crease along adjustment line. Make a fold half the amount needed. Tape in place.
TO LENGTHEN: Slash between adjustment lines. Spread amount as needed, keeping edges parallel. Tape over paper.
 When Alteration lines are not on tissue, lengthen or shorten at lower edge.

SHRINK FABRIC if not labeled pre-shrunk. Press.

CIRCLE LAYOUT for View, Size, Fabric Width.

Use **WITH NAP** layout for fabrics with one-way designs, nap, pile or surface shading. Because most knits have surface shading, a with nap layout is used.

For **DOUBLE THICKNESS (WITH FOLD)** - fold fabric with right sides together.

* **DOUBLE THICKNESS (WITHOUT FOLD)** - For fabrics with nap, fold fabric crosswise, right sides together. Mark as shown. Cut along crosswise fold of fabric (A). Turn upper layer 180° so arrows go in same direction and place over lower layer, right sides together (B).

For **SINGLE THICKNESS** - place fabric right side up. (For Fur Pile fabrics, place pile side down.)

CUTTING AND MARKING

★ Cut other pieces first, allowing enough fabric to cut this piece. Open fabric. For "Cut 1" pieces, cut piece once on single layer of fabric with piece face up on right side of fabric.

Pattern may have cutting lines for several sizes. Select the proper cutting line or pattern pieces for your size.

Before **CUTTING** place all pieces on fabric according to layout. Pin. (Layouts show approximate position of pattern pieces; position may vary according to your pattern size.) Cut **ACCURATELY**, cutting notches outward.

Before removing pattern, **TRANSFER MARKINGS** and lines of construction to Wrong Side of fabric, using the Pin and Chalk Pencil method or Tracing Paper and Dressmaker Wheel. Markings needed on right side of fabric should be thread traced.

NOTE: Broken-line boxes (a! b! c!) in layouts represent pieces cut by measurements provided.

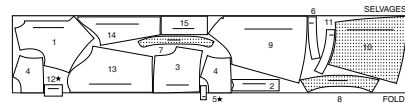
CUTTING LAYOUTS

RIGHT SIDE OF PATTERN	WRONG SIDE OF PATTERN	RIGHT SIDE OF FABRIC	WRONG SIDE OF FABRIC
-----------------------	-----------------------	----------------------	----------------------

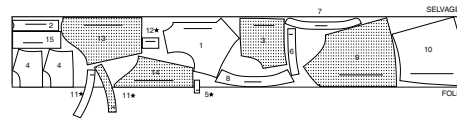
DRESS A

use pieces: 1 2 3 4 5 6 7 8 9 10 11 12 13 14 15

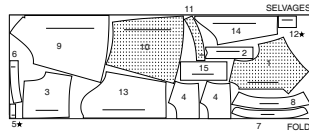
45" (115 cm) with nap
sizes 20W 22W 24W 26W 28W



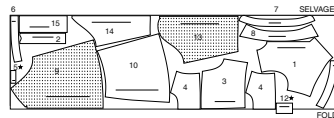
45" (115 cm) with nap
sizes 30W 32W 34W 36W 38W



60" (150 cm) with nap
sizes 20W 22W 24W 26W 28W



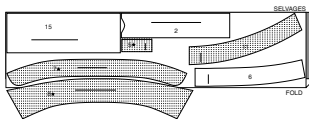
60" (150 cm) with nap
sizes 30W 32W 34W 36W 38W



INTERFACING A

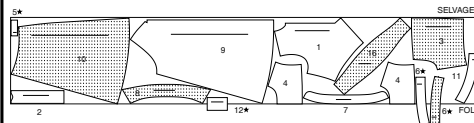
use pieces: 2 5 6 7 8 11 15

20" (51 cm) without nap
all sizes

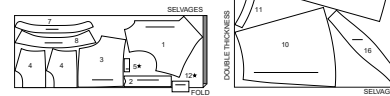


DRESS B

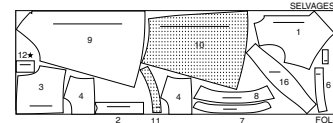
use pieces: 1 2 3 4 5 6 7 8 9 10 11 12 16
45" (115 cm) with nap
sizes 420W 22W 24W 26W 28W



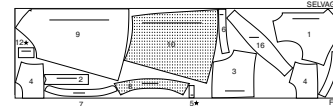
45" (115 cm) with nap
sizes 30W 32W 34W 36W 38W



60" (150 cm) with nap
sizes 20W 22W 24W 26W 28W 30W



60" (150 cm) with nap
sizes 32W 34W 36W 38W



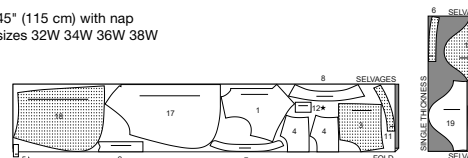
DRESS C

use pieces: 1 2 3 4 5 6 7 8 11 12 17 18 19

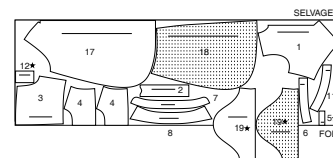
45" (115 cm) with nap
sizes 20W 22W 24W 26W 28W 30W



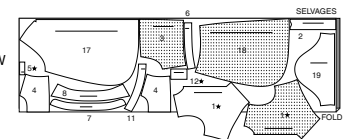
45" (115 cm) with nap
sizes 32W 34W 36W 38W



60" (150 cm) with nap
sizes 20W 22W 24W 26W 28W 30W



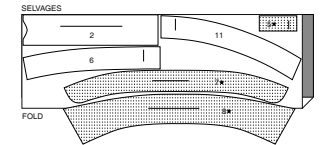
60" (150 cm) with nap
sizes 32W 34W 36W 38W



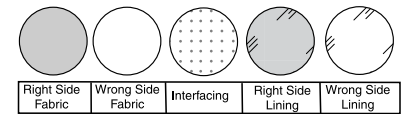
INTERFACING B, C

use pieces: 2 5 6 7 8 11

20" (51 cm) without nap
all sizes

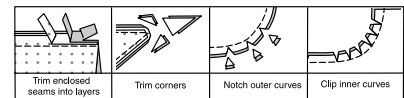


SEWING INFORMATION
FABRIC KEY



SEAM ALLOWANCES

Use 1/4" (6mm) seam allowances unless otherwise indicated.



PIN AND FIT

Pin or baste seams, **RIGHT SIDE TOGETHER**, matching notches. Fit garment before stitching major seams.

PRESS

Press seam allowances flat; then open unless otherwise stated. Clip where necessary so they lie flat.

GLOSSARY

Sewing terms appearing in **BOLD TYPE** in Sewing Instructions are explained below.

EASESTITCH - Stitch along seamline, using long machine stitches. Pull thread ends when adjusting to fit.

NOTE: For sleeve caps, make a second row of long machine stitches 1/4" (6mm) away in seam allowance, for more control.

FINISH - Stitch 1/4" (6mm) from raw edge and finish with one of the following: (1) Pink OR (2) Overcast OR (3) Turn in along stitching and stitch close to fold OR (4) Overlock.

NARROW HEM - Turn in hem; press, easing in fullness if necessary. Open out hem. Turn in again so raw edge is along crease; press. Turn in along crease; stitch.

OPTIONAL FOR HEMS: Apply Seam Binding.

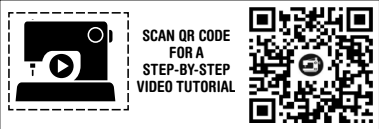
REINFORCE - Stitch along seamline where indicated in sewing instructions, using small machine stitches.

SLIPSTITCH - Slide needle through a folded edge, then pick up a thread of underneath fabric.

STAYSTITCH - Stitch 1/8" (3mm) from seamline in seam allowance (usually 1/2" (1.3cm) from raw edge).

TOPSTITCH - On outside, stitch 1/4" (6mm) from edge, seam or previous stitching, using presser foot as guide, or stitch where indicated in instructions.

UNDERSTITCH - Open out facing or underside of garment; stitch to seam allowance close to seam.

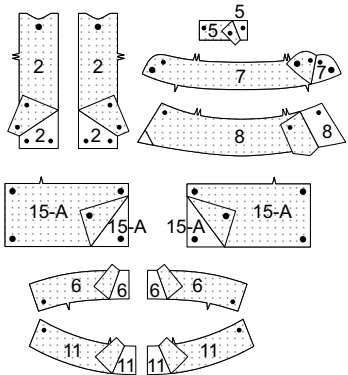


DRESS A, B, C

NOTE: Under each sub-heading, the first view will be illustrated, unless otherwise indicated

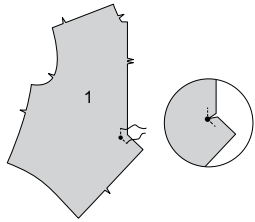
INTERFACING

1. Pin Interfacing to wrong side of each matching fabric section. Fuse, following manufacturer's instructions.

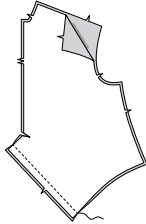


BODICE FRONT AND BACK

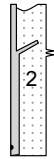
2. REINFORCE front edge of BODICE FRONT (1) through small dot, as shown. Clip to small dot.



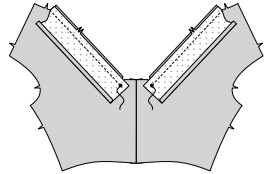
3. Stitch bodice front sections together at lower front seam, as shown.



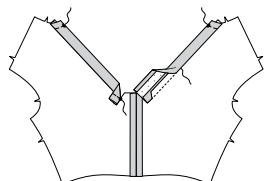
4. Turn in seam allowance on long unnotched edge of PLACKET (2). Press. Trim pressed seam allowance to 3/8" (1cm).



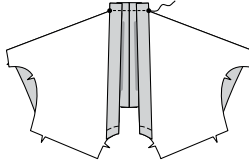
5. With right sides together, pin plackets to upper front edges, matching notches and small dots. Stitch to small dots. Press seams toward plackets.



6. With wrong sides together, fold plackets along foldlines. Press. **SLIPSTITCH** pressed edges over seams. Baste upper and lower edges.

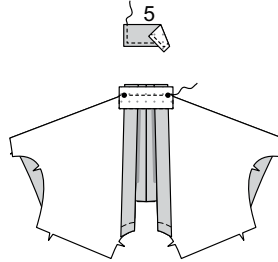


7. Pin lower edges of plackets to bodice front, as shown, having raw edges even. Baste.



8. FINISH side and lower edges of FRONT FACING (5).

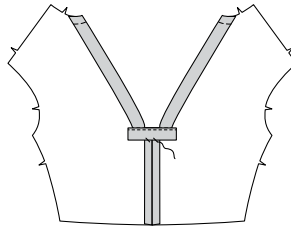
With right sides together, pin front facing to inner edge of bodice front, over plackets, matching small dots. Stitch. **UNDERSTITCH** facing.



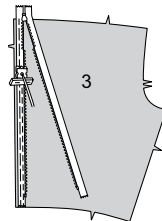
9. Turn facing to inside. Press. Tack facing to seam.

NOTE: The zipper is longer than the zipper opening and will be adjusted after the zipper is inserted.

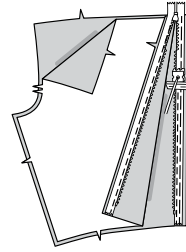
NOTE: Stitch the invisible zipper using an invisible zipper foot. Zipper opens from the bottom, up.



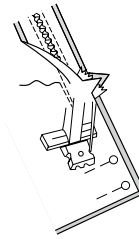
10. Open the zipper and press the tape using a cool iron. On **OUTSIDE**, pin **LEFT** side of the zipper face down on **RIGHT BODICE BACK** (3) opening, as shown. Have the coil along the seam line, the tape within the seam allowance and the top stop 1/8" (3mm) above lower seamline, as shown. Hand-baste along center of the tape. Position zipper foot at the top of the zipper with **LEFT** groove of the foot over coil. Stitch along tape to notch. Back-stitch to reinforce.



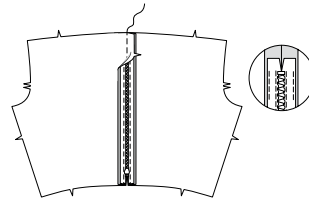
11. Pin the remaining half of the zipper to the **LEFT** bodice back zipper opening in same manner. Hand-baste along the center of the tape. Position zipper foot at the top of the zipper with **RIGHT** groove over the coil. Stitch along tape to notch. Back-stitch to reinforce.



12. Pin remaining center back seam together above zipper. Position zipper foot all the way to the **LEFT** so the needle goes down through the outer notch of the foot. Start stitching seam 1/4" (6mm) below highest stitch and slightly to the **LEFT**.

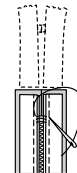


13. Stitch remainder of seam to upper edge. Close zipper and check that it is invisible from the **OUTSIDE**.

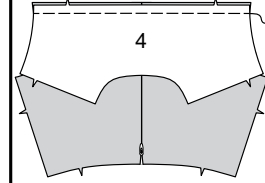


14. If the zipper is longer than the opening, using a strong thread, hand-sew a few small stitches across ends of coils at end of opening. Trim away lower end of zipper tape to within 5/8" (1.5cm) of hand-stitches

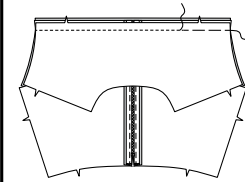
If you prefer, open out each seam allowance at end of zipper and stitch tape to seam allowance.



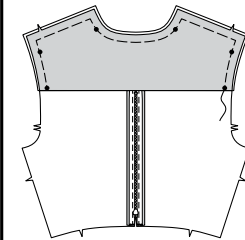
15. With right sides together, pin one **YOKE BACK** (4) section to upper edge of bodice back matching centers and notches. Baste.



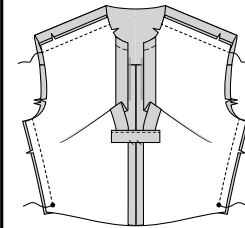
16. Pin right side of remaining yoke back section to wrong side of bodice back at upper edge, matching centers and notches. Baste. Stitch. Trim.



17. Turn up yoke back over seam. Press. Baste raw edges.

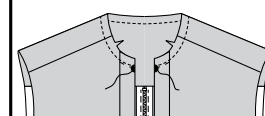


18. Stitch front to back at shoulders. Stitch front to back at sides, leaving open below small dots.



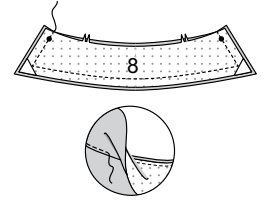
COLLAR AND SLEEVE

19. STAYSTITCH neck edge.



20. With right sides together, pin **COLLAR** (8) sections

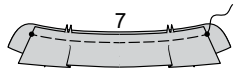
For facing, **UNDERSTITCH** interfaced collar.



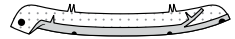
21. Turn. Press. Baste raw edges.



22. Pin collar to right side of uninterfaced **COLLAR BAND** (7) section, facing side down, matching centers and small dots. Baste.



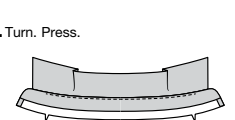
23. For facing, turn in seam allowance on lower edge of interfaced collar band section. Press, easing in fullness if necessary. Trim pressed seam allowance to 3/8" (1cm).



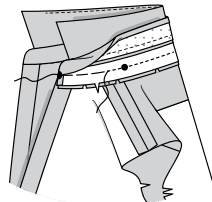
24. With right sides together, pin collar band facing to collar band, over collar, matching centers and symbols. Stitch, leaving lower edge open. Trim. **UNDERSTITCH** facing.



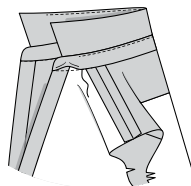
25. Turn. Press.



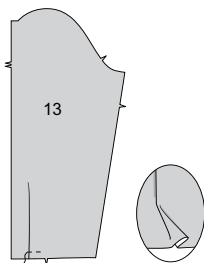
26. Pin collar band and collar to neck edge, matching centers and large dots, placing small dots at shoulder seams, clipping neck edge where necessary. Baste. Stitch. Trim. Press seam toward collar band.



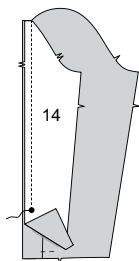
27. SLIPSTITCH pressed edge over seam



VIEW A:
28. To make pleat in SLEEVE FRONT (13), on outside, crease along solid line. Bring crease to broken line; baste. Baste across lower edge. Press.



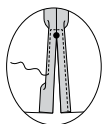
29. Pin SLEEVE BACK (14) to back edge of sleeve front, matching symbols and notches. Stitch, keeping open below upper large dot.



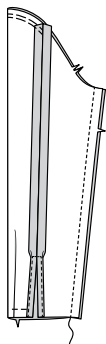
30. EASESTITCH upper edge of sleeve between outer small dots.



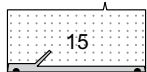
31. Make 5/8" (1.5cm) **NARROW HEM** at sleeve opening edges, tapering to nothing above upper large dot. Pivot across seam 1/4" (6mm) above upper large dot when stitching.



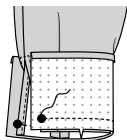
32. Stitch sleeve seam



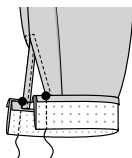
33. Turn in seam allowance on long unnotched edge of CUFF (15). Press. Trim pressed seam allowance to 3/8" (1cm).



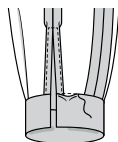
34. Pin cuff to sleeve, matching large dots to opening edges of sleeve. Stitch. Trim. Press seam toward cuff.



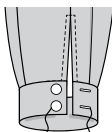
35. With right sides together, fold cuff along foldline. Stitch ends. Trim.



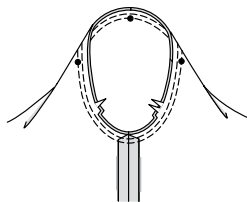
36. Turn. Press. **SLIPSTITCH** pressed edge over seam.



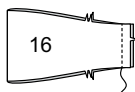
37. Make buttonholes in cuff at markings. Sew buttons to cuff at small dots.



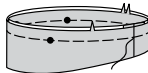
38. With right sides together, pin sleeve into armhole, matching small dots. Adjust ease; baste. Stitch. Stitch again 1/4" (6mm) away in seam allowance. Trim close to stitching. Press seam allowances flat. Turn seam toward sleeve.



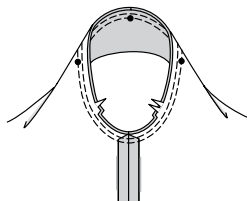
VIEW B:
39. Stitch ends of SLEEVE (16) together, as shown.



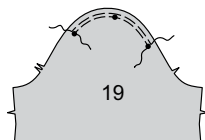
40. With wrong sides together, fold sleeve along foldline, matching symbols, having raw edges even. Baste raw edges.



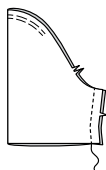
41. With right sides together, pin sleeve into armhole, matching small dots. Stitch. Stitch again 1/4" (6mm) away in seam allowance. Trim close to stitching. Press seam allowances flat. Turn seam toward sleeve.



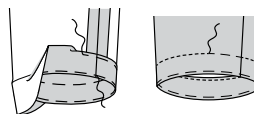
VIEW C:
42. EASESTITCH upper edge of SLEEVE (19) between outer small dots.



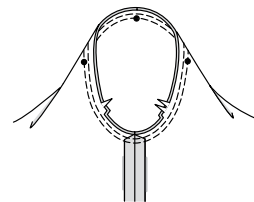
43. Stitch sleeve seam.



44. Turn up sleeve hem. Baste close to fold. Turn in 1/4" (6mm) on raw edge. Baste hem in place close to upper edge. Press.

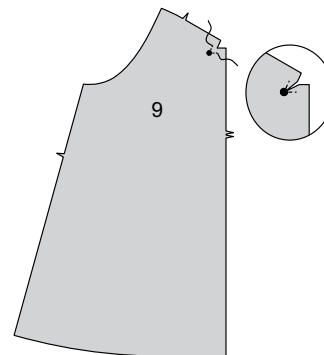


45. With right sides together, pin sleeve into armhole, matching small dots. Adjust ease; baste. Stitch. Stitch again 1/4" (6mm) away in seam allowance. Trim close to stitching. Press seam allowances flat. Turn seam toward sleeve

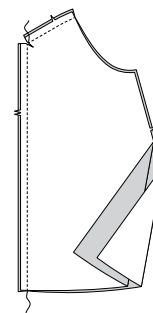


SKIRT

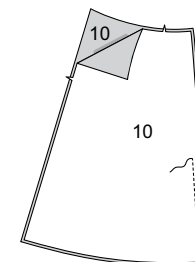
VIEWS A, B:
46. REINFORCE SKIRT FRONT (9) along dart seamline, pivoting at small dot. Clip to small dot.



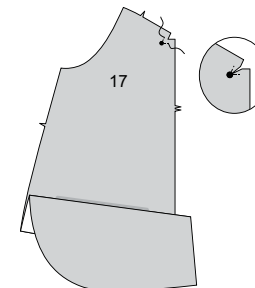
47. Pin skirt front sections together, matching notches and symbols. Stitch center front and upper notched edges, as shown.



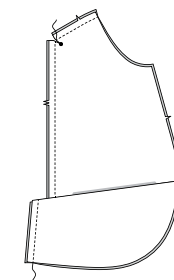
48. Stitch SKIRT BACK (10) sections together at center back, leaving open from 3" (7.5cm) below notch to upper edge, as shown.



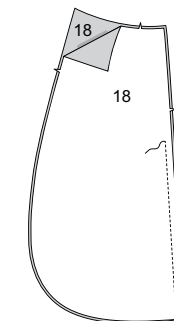
VIEW C:
49. REINFORCE SKIRT FRONT (17) along dart seamline, pivoting at small dot. Clip to small dot.



50. Pin skirt front sections together, matching notches and symbols. Stitch center front and upper notched edges, as shown.



51. Stitch SKIRT BACK (18) sections together at center back, leaving open from 3" (7.5cm) below notch to upper edge, as shown.

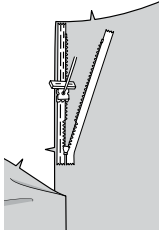


ALL VIEWS:

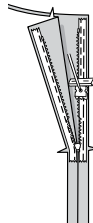
NOTE: The zipper is longer than the zipper opening and will be adjusted after the zipper is inserted.

NOTE: Stitch the invisible zipper using an invisible zipper foot

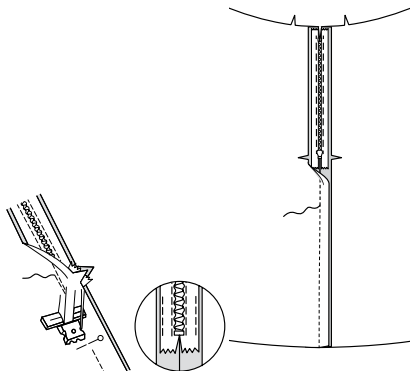
52. Open the zipper and press the tape using a cool iron. On **OUTSIDE**, pin **RIGHT** side of the zipper face down on the **RIGHT** side of the zipper opening. Have the coil along the seam line, the tape within the seam allowance and the top stop 1/8" (3mm) below upper seamline, as shown. Hand-baste along center of the tape. Position zipper foot at the top of the zipper with **RIGHT** groove of the foot over coil. Stitch along tape to notch, keeping dress free. Back-stitch to reinforce.



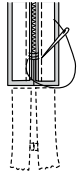
53. Pin the remaining half of the zipper to the **LEFT** side of the zipper opening in same manner. Hand-baste along the center of the tape. Position zipper foot at the top of the zipper with **LEFT** groove over the coil. Stitch along tape to notch, keeping dress free. Back-stitch to reinforce.



54. Close zipper and check that it is invisible from the **OUTSIDE**. Pull the free ends of the zipper tape away from the seam allowance. Pin remaining center back seam together below zipper. Position zipper foot all the way to the **LEFT** so the needle goes down through the outer notch of the foot. Start stitching seam 1/4" (6mm) above lowest stitch and slightly to the **LEFT**. Stitch remainder of seam, connecting with previous stitching.

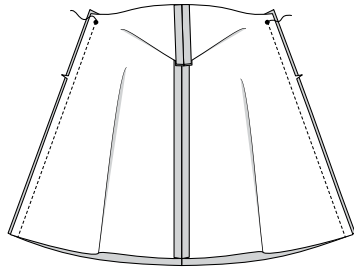


55. If the zipper is longer than the opening, using a strong thread, hand-sew a few small stitches across ends of coils at end of opening. Trim away lower end of zipper tape to within 5/8" (1.5cm) of hand-stitches.

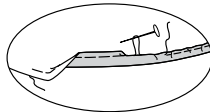


VIEWS A, B:

56. Stitch front to back at side seams, leaving open above small dots.

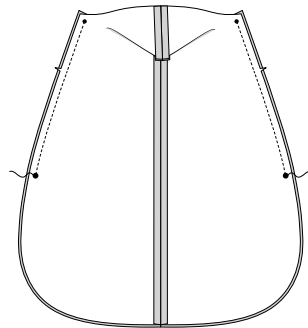


57. Make 5/8" (1.5cm) **NARROW HEM** at lower edge of skirt.

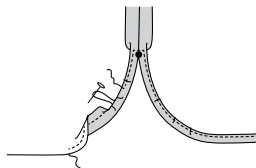


VIEW C:

58. Stitch front to back at side seams, between small and large dots.

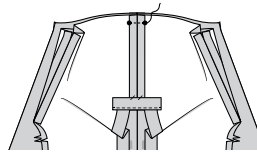


59. Stitch 1/4" (6mm) from lower edges of skirt, using long machine stitches. Turn up 5/8" (1.5cm) hem, turning in 1/4" (6mm) on raw edge. Pull thread to ease in fullness. Stitch, tapering to nothing above large dots. Pivot across seams 1/4" (6mm) above large dots when stitching. Press.

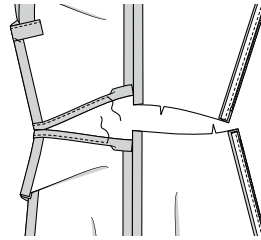


FINISHING

60. With right sides together, pin skirt front to bodice front, matching center seams and center small dots. Stitch between small dots, as shown.



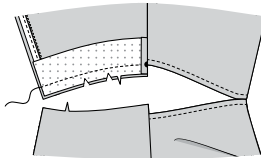
61. Make 5/8" (1.5cm) **NARROW HEM** at lower edge of bodice front and upper edge of skirt front, as shown.



62. **FINISH** lower edge of **BODICE BACK FACING** (6). Turn in seam allowance on side edge. Press. Trim pressed seam allowance to 3/8" (1cm).

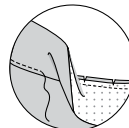
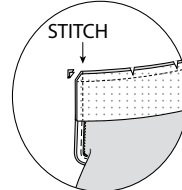


63. Open out back opening edges of bodice, rolling the zipper teeth away from the opening edge. With **RIGHT** sides together, pin facing to bodice matching small dots and notches. Stitch. Trim seam; clip curves.

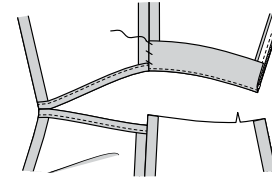


64. Pin back opening edges together. Using an adjustable zipper foot, stitch 1/2" (1.3cm) from back edges, keeping zipper teeth free. Trim corners. Do not trim back edges.

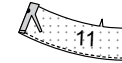
UNDERSTITCH facing.



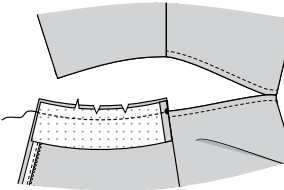
65. Turn facing and back edges to **INSIDE**, rolling zipper teeth back in place; press. To keep the facing from rolling to **OUTSIDE**, secure it at side seam allowances by tacking it by hand.



66. **FINISH** lower edge of **SKIRT BACK FACING** (11). Turn in seam allowance on side edge. Press. Trim pressed seam allowance to 3/8" (1cm).

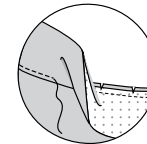
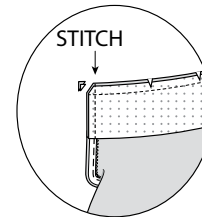


67. Open out back opening edges of skirt, rolling the zipper teeth away from the opening edge. With **RIGHT** sides together, pin facing to skirt matching small dots and notches. Stitch upper edge. Trim seam; clip curves.

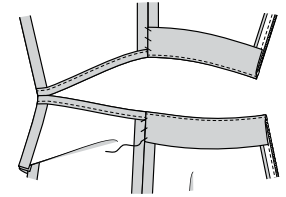


68. Pin back opening edges together. Using an adjustable zipper foot, stitch 1/2" (1.3cm) from back edges, keeping zipper teeth free. Trim corners. Do not trim back edges.

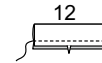
UNDERSTITCH facing.



69. Turn facing and back edges to **INSIDE**, rolling zipper teeth back in place; press. To keep the facing from rolling to **OUTSIDE**, secure it at side seam allowances by tacking it by hand.



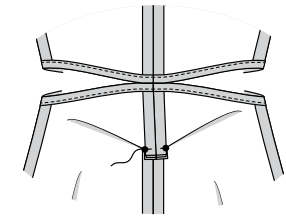
70. With right sides together, fold **KNOT** (12) in half lengthwise, matching notches. Stitch in a 3/8" (1cm) seam.



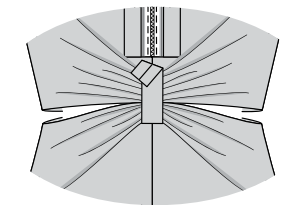
71. Turn, bringing seam to center. Press. Baste raw edges.



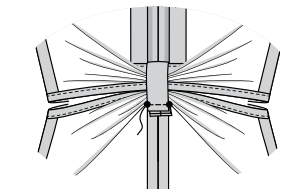
72. Insert knot through skirt front dart seam, matching small dots. Baste.



73. Bring remaining end of knot over center of bodice front, as shown.



74. On inside, pin knot to dart seam, having raw edges together, matching small dots. Baste. Stitch in a 3/8" seam, through all thicknesses.





Congrats!

You've completed your sewing adventure

**SHARE
YOUR** LOOK



Post your pattern and tag us
@simplicity_creative_group and **#mccallspatterns**
for a chance to be featured on our social media.

Look for more PDF patterns at **simplicity.com**

Have a question or need help with your sewing project call us at
1-800-782-0323

McCall's
by design...