



Very Easy

MISSES' DRESSES IN TWO LENGTHS WITH CHOICE OF THREE NECKLINES

Suggested Fabrics: A,C,D in Single Border Print Fabrics. B,E,F in Denim, Linen, Oxford Cloth, Pique, Printed Cottons, Synthetics, Terry Cloth, Ticking. **Interfacing:** Lightweight Fusible.

Sizes	S (8-10)	M (12-14)	L (16-18)
European	34-36	38-40	42-44

BODY MEASUREMENTS: Select pattern size based on body measurements

	S	M	L	Ins.
Bust	31½-32½	34-36	38-40	"
Waist	24-25	26½-28	30-32	"
Hip-9" below waist	33½-34½	36-38	40-42	"
Back-neck to waist	15¾-16	16¼-16½	16¾-17	"

Interfacing A,B,C,D,E,F

20"	¾	1	1½	Yds.
-----	---	---	----	------

Dress A,D (cut crosswise)

45"*	2¼	2¾	2½	Yds.
------	----	----	----	------

Dress B

45"*	2¾	2¾	2¾	Yds.
------	----	----	----	------

Dress C (cut crosswise)

45"*	2¼	2¾	2½	Yds.
------	----	----	----	------

Dress E

45"*	3	3½	3½	Yds.
------	---	----	----	------

Dress F

45"*	2¾	2¾	2¾	Yds.
------	----	----	----	------

FINISHED GARMENT MEASUREMENTS (Includes Design and Wearing Ease)

A,B,C,D,E,F Bust	40	43½	47½	Ins.
A,B,C,D,E,F Waist	39	42½	46½	"
A,B,C,D,E,F Hip	39½	43	47	"
Width, lower edge				
Dress A,D,E	40½	44	48	Ins.
Dress B,C,F	40	43½	47½	"
Finished back length from base of neck				
Dress A,D,E	39¾	40¼	40¾	Ins.
Dress B,C,F	33¾	34¼	34¾	"

*with nap **without nap

Facile

ROBES EN DEUX LONGUEURS AVEC TROIS ENCOLURES POUR JEUNES FEMMES

Tissus Conseillés: A,C,D en tissus à simple bordure. B,E,F en Denim, Toile de lin, Coton d'Oxford, Piqué, Cotons imprimés, Tissus synthétiques, Tissu éponge, Coutil. **Entoilage:** Thermocollant léger.

Tailles	P/S (36-38)	M/M (40-42)	G/L (44-46)
Françaises	36-38	40-42	44-46
Européen	34-36	38-40	42-44

MESURES DU CORPS: Choisissez la taille du patron basée sur les mesures du corps

	P/S (36-38)	M/M (40-42)	G/L (44-46)	cm
Poitrine	80-83	87-92	97-102	"
Taille	61-64	67-71	76-81	"
Hanches (23cm au-dessous de la taille)				
Dos du cou à la taille	85-88	92-97	102-107	cm
Entoilage A,B,C,D,E,F	40-40.5	41.5-42	42.5-43	"

Robe A,D (coupé dans la largeur)

115cm*	1.9	2.2	2.3	m
--------	-----	-----	-----	---

Robe B

115cm*	2.5	2.6	2.6	m
--------	-----	-----	-----	---

Robe C (coupé dans la largeur)

115cm*	1.9	2.1	2.3	m
--------	-----	-----	-----	---

Robe E

115cm*	2.7	2.9	2.9	m
--------	-----	-----	-----	---

Robe F

115cm*	2.5	2.5	2.6	m
--------	-----	-----	-----	---

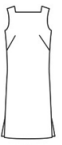
MESURES DES VÊTEMENTS FINI (Motif et aisance de port compris)

A,B,C,D,E,F Poitrine	102	110	121	cm
A,B,C,D,E,F Taille	99	108	118	"
A,B,C,D,E,F Hanches	100	109	119	"
Largeur à l'ourlet				
Robe A,D,E	103	112	122	cm
Robe B,C,F	102	110	121	"
Longueur finie - dos, votre nuque à l'ourlet				
Robe A,D,E	101	102	104	cm
Robe B,C,F	86	87	88	"

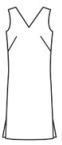
*avec sens **sans sens



A



D



E



A,D,E

McCall's
6740

EASY SEWING GUIDE
FOR STEP-BY-STEP, CUTTING AND ASSEMBLING

1. YOUR PATTERN

- a. All the pattern pieces included in this design are shown in diagram below. Select the pattern pieces to be used. Place remaining pieces inside the envelope. Press pattern pieces.
- b. If pattern adjustments are necessary, they should be made before placing pieces on fabric. NOTE: For complete information regarding pattern adjustments, see "McCall's Easy Sewing Book".

2. CUTTING LAYOUTS

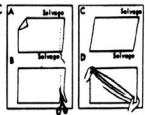
- a. Mark a circle around layout to be followed.
- b. Pin ALL pattern pieces to fabric before cutting.

3. YOUR FABRIC

IMPORTANT --- First be sure that wools, washable fabrics and interfacings are pre-shrunk.

HOW TO STRAIGHTEN FABRIC

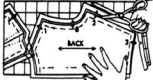
Straighten ends of fabric by tearing across, or if it does not tear well, draw a thread across; then cut on line of drawn thread (sketches A and B).



To straighten fabric (sketch C), stretch fabric on the bias in opposite direction until the crosswise threads are squared with selvages (sketch D).

HOW TO CUT

Cut pattern and fabric through the white center of the double line. Do not cut off the margin before cutting fabric.



The margin falls away as you cut through pattern and fabric.

MARKING WITH TRACING WHEEL

All markings should be made on the **WRONG SIDE** of fabric. Trace lines of pattern with a tracing wheel. For single thickness, lay one piece of dressmaker's carbon paper **FACE UP** under the **WRONG SIDE** of fabric. For doubled fabric, lay one piece of tracing paper, **FACE UP**, under the fabric; another piece **FACE DOWN** directly underneath the tissue pattern.



GENERAL DIRECTIONS

STAY-STITCHING

Run a row of machine-stitching a scant 1/8" outside the seam line indicated on pattern to prevent edge from stretching.



BASTE GARMENT TOGETHER and try on for fitting before stitching seams.

TO MAKE DARTS---Fold dart on solid line, having **RIGHT SIDES** of fabric together; then stitch together along dotted lines to point.



TRIM ENCLOSED SEAMS to about 1/4" from stitching on collars, etc., before turning right side out.



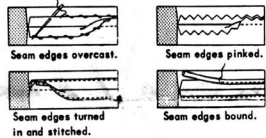
FOR A SEAM HAVING INTERFACING JOINED IN, first trim away seam allowance on interfacing close to stitching (sketch A); then trim remaining seam edges to 1/4" from stitching (sketch B). If heavy fabric is used, grade seam by trimming one edge a little more than the other to prevent a ridge when pressing.



CLIP SEAM EDGES on inward curves and corners when necessary.



SEAM FINISHINGS



PRESSING

PRESS SEAMS AND SECTIONS as the work progresses. Press each seam open after stitching unless the directions state otherwise.



2. CUTTING LAYOUTS FOR ALL SIZES

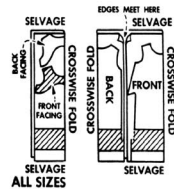
The pattern pieces shaded in the layouts, are to be laid face down. Pattern outlines shown dotted indicate duplicate pieces.

DISREGARD ANY PERFORATIONS THAT MAY APPEAR ON PATTERN PIECES

6740

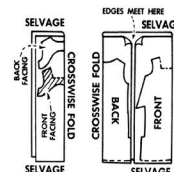
VIEW A

45" FABRIC



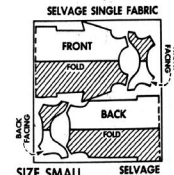
VIEW C

45" FABRIC



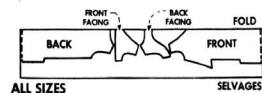
VIEW F

45" FABRIC

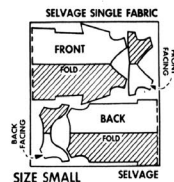


VIEW B

35" FABRIC

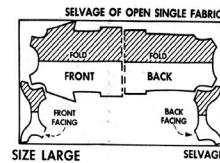
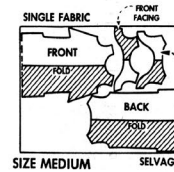
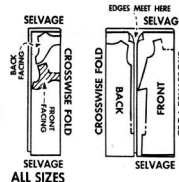


45" FABRIC

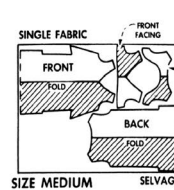
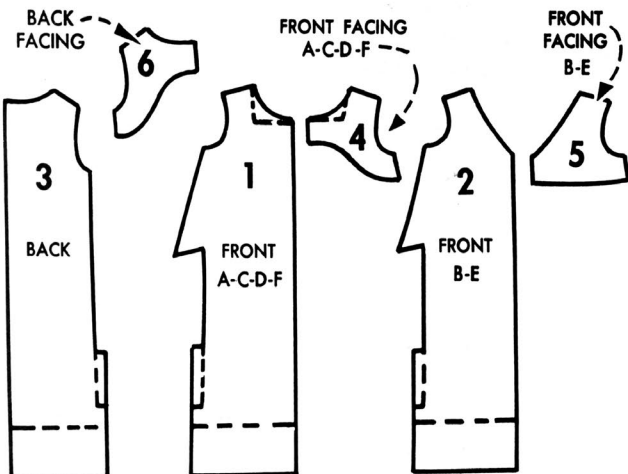


VIEW D

45" FABRIC

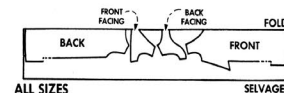


1. CHECK 6 PATTERN PIECES BEFORE CUTTING

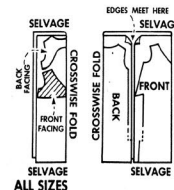


VIEW E

35" FABRIC



45" FABRIC



HAVE YOU SEEN
McCALL'S
EXCLUSIVE...
THE REVOLUTIONARY NEW
EASY-MARK*
PATTERN

It's a great sewing time-saver-- as easy as one, two, three.



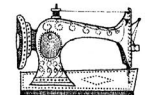
CUT

Cut out pattern pieces



PRESS

Press pattern markings on fabric with warm iron



SEW

Sew immediately!

No more fussing with tailor's tacks, carbon paper or tracing wheel. EASY-MARK Patterns are cut from single layers of fabric...pressing on markings is ultra simple. They may be used three times on most light, medium or bright colors, will work successfully on any smooth-textured fabric.*

Look for McCall's growing collection of EASY-MARK Patterns...they're made to make home sewing easier.

*NOTE: all EASY-MARK patterns have a test piece. Be sure to test your fabric for clear, definite markings. If fabric will not take markings, use pattern in the usual manner.

3. ASSEMBLING, SEWING AND FINISHING DETAILS

FOR MORE DETAILED INSTRUCTION, SEE McCALL'S EASY SEWING BOOK, AVAILABLE AT YOUR PATTERN COUNTER.

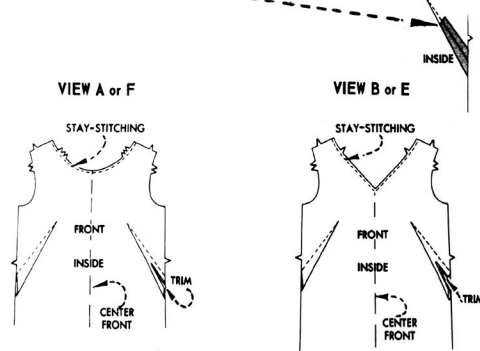
SHADED AREAS SHOW RIGHT SIDE OF FABRIC

DRESS — 5 STEPS

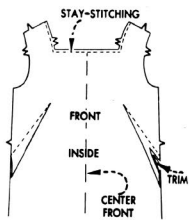
1. TO CONSTRUCT FRONT

Stay-stitch neck edge.

Stitch darts. Trim away fold of each dart from 1/2" at side edge tapering to 1/4" at about 2" from point; then press edges open and point downward as illustrated.

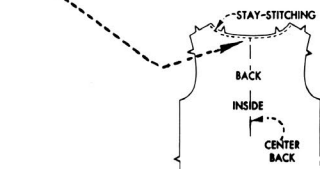


VIEW C or D



2. TO CONSTRUCT BACK

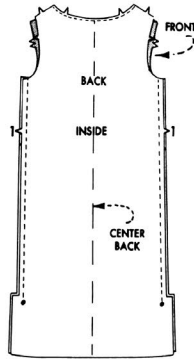
Stay-stitch neck edge.



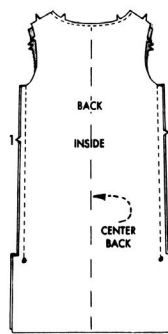
3. SIDE SEAMS

Notches 1. Seam back to front at sides, joining each seam to circle on hem extension. Press seams open.

VIEW A, D or E



VIEW B, C or F



4. FACING, ETC. FOR VIEW A OR F

2. Seam back facing to front facing at sides. Press seams open.

Turn down the seam allowance on UN-NOTCHED shoulder edges of facing and baste.

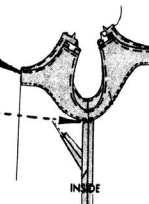
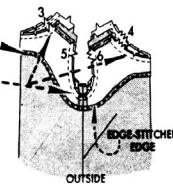
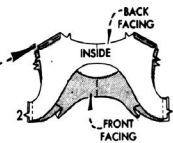
Turn under 1/4" on UN-NOTCHED lower edge of facing and edge-stitch.

3 to 6. Stitch facing to neck and armhole edges of dress, RIGHT SIDES TOGETHER, matching notches and seams, and having basted shoulder edges of facing 5/8" down from raw shoulder edges of dress. Trim seamed edges. Clip curves.

Turn facing to INSIDE. Baste close to seamed edges. Press.

Tack lower edge of facing to side seams of dress.

Remove basting along neck and armhole edges from shoulder edges down 1".



7. Join shoulder seams of dress, leaving facing free. Crease seams open with your fingers.

Slipstitch basted shoulder edges of facing together.

FACING, ETC. FOR VIEW B OR E

2. Seam back facing to front facing at sides. Press seams open.

Turn down the seam allowance on UN-NOTCHED shoulder edges of facing and baste.

Turn under 1/4" on UN-NOTCHED lower edge of facing and edge-stitch.

3 to 6. Stitch facing to neck and armhole edges of dress, RIGHT SIDES TOGETHER, matching notches and seams, and having basted shoulder edges of facing 5/8" down from raw shoulder edges of dress. Trim seamed edges. Clip curves and center front corner.

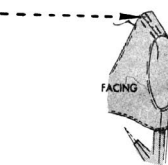
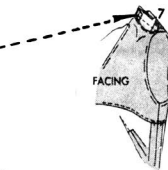
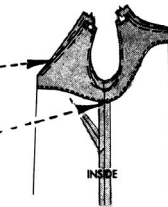
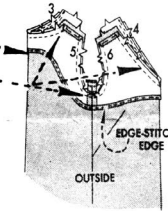
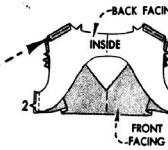
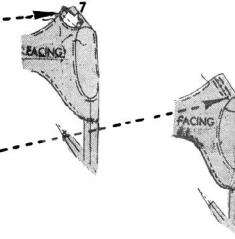
Turn facing to INSIDE. Baste close to seamed edges. Press.

Tack lower edge of facing to side seams of dress.

Remove basting along neck and armhole edges from shoulder edges down 1".

7. Join shoulder seams of dress, leaving facing free. Crease seams open with your fingers.

Slipstitch basted shoulder edges of facing together.



FACING, ETC. FOR VIEW C OR D

2. Seam back facing to front facing at sides. Press seams open.

Turn down the seam allowance on UN-NOTCHED shoulder edges of facing and baste.

Turn under 1/4" on UN-NOTCHED lower edge of facing and edge-stitch.

3 to 6. Stitch facing to neck and armhole edges of dress, RIGHT SIDES TOGETHER, matching notches and seams and having basted shoulder edges of facing 5/8" down from raw shoulder edges of dress. Trim seamed edges. Clip curves and corners.

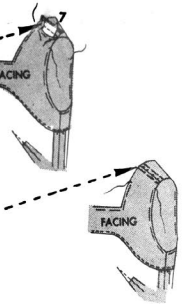
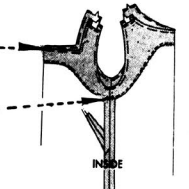
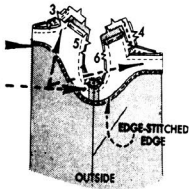
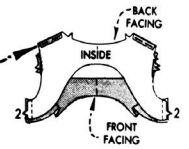
Turn facing to INSIDE. Baste close to seamed edges. Press.

Tack lower edge of facing to side seams of dress.

Remove basting along neck and armhole edges from shoulder edges down 1".

7. Join shoulder seams of dress, leaving facing free. Crease seams open with your fingers.

Slipstitch basted shoulder edges of facing together.

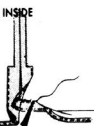


5. HEMS (ALL VIEWS)

Turn under 1/4" on raw edge of each side hem extension and lower edge of dress and edge-stitch.

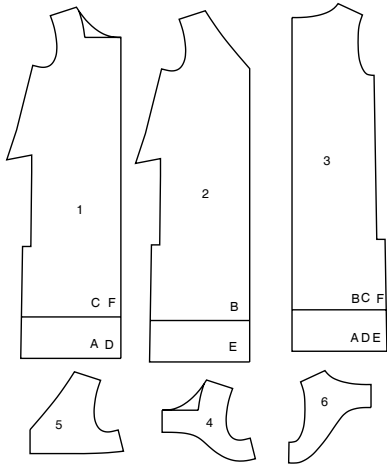
Try on dress. Adjust length. Turn up hems and baste close to each fold edge. Slipstitch inner edge of each hem flat to dress.

Turn under each side hem extension on hemline and baste close to fold edge. Slipstitch inner edge of each hem flat to dress, slipstitching lower edge of hem to dress.



SUPPLEMENTAL CUTTING LAYOUTS

6 PIECES



- 1 Front-A,C,D,F
- 2 Front-B,E
- 3 Back-A,B,C,D,E,F
- 4 Front Facing-A,C,D,F
- 5 Front Facing-B,E
- 6 Back Facing-A,B,C,D,E,F

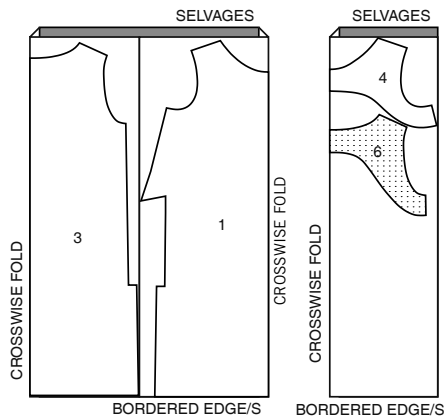
CUTTING LAYOUTS

RIGHT SIDE OF PATTERN	WRONG SIDE OF PATTERN	RIGHT SIDE OF FABRIC	WRONG SIDE OF FABRIC

DRESS A,D

NOTE: CUT CROSSWISE OF BORDER PRINT FABRIC
use pieces 1 3 4 6

45" (115CM) with nap
all sizes



PATTERN MARKINGS

- GRAINLINE:** Place on straight grain of fabric, parallel to selvage or fold.
- FOLDLINE:** Place line on fold of fabric.
- BUTTONHOLE MARKING:** Indicates exact length and placement of buttonholes.
- BUTTON MARKING:** Indicates button placement.
- NOTCHES AND SYMBOLS:** For matching seams and construction details.
- Indicates the Bustline, Waistline, Hip and/or Biceps. Measurements refer to circumference of Finished Garment (Body Measurement + Wearing Ease + Design Ease). Adjust pattern if necessary. The measurement excludes pleats, tucks, darts and seam allowances.
- SEAM ALLOWANCE:** 5/8" (1.5cm) included unless otherwise indicated, but not printed on tissue.

ADJUST IF NECESSARY

- Lengthen or Shorten** at adjustment lines (==) or where indicated on pattern. If substantial length is added, you may need to purchase additional fabric.
 - TO SHORTEN:** Crease along adjustment line. Make a fold half the amount needed. Tape in place.
 - TO LENGTHEN:** Slash between adjustment lines. Spread amount as needed, keeping edges parallel. Tape over paper.
- When Alteration lines are not on tissue, lengthen or shorten at lower edge.

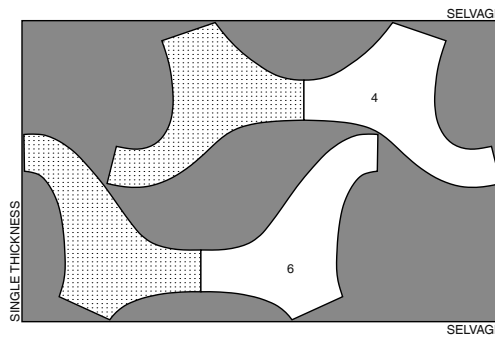
CUTTING AND MARKING

- SHRINK FABRIC** if not labeled pre-shrunk. Press.
- CIRCLE LAYOUT** for View, Size, Fabric Width.
- Use **WITH NAP** layout for fabrics with one-way designs, nap, pile or surface shading. Because most knits have surface shading, a with nap layout is used.
- For **DOUBLE THICKNESS (WITH FOLD)** - fold fabric with right sides together.
- * DOUBLE THICKNESS (WITHOUT FOLD)** - For fabrics with nap, fold fabric crosswise, right sides together. Mark as shown. Cut along crosswise fold of fabric (A). Turn upper layer 180° so arrows go in same direction and place over lower layer, right sides together (B).
- For **SINGLE THICKNESS** - place fabric right side up. (For Fur Pile fabrics, place pile side down.)
- ★ Cut other pieces first**, allowing enough fabric to cut this piece. Open fabric. For "Cut 1" pieces, cut piece once on single layer of fabric with piece up on right side of fabric.
- Pattern may have cutting lines for several sizes. Select the proper cutting line or pattern pieces for your size.
- Before **CUTTING** place all pieces on fabric according to layout. Pin. (Layouts show approximate position of pattern pieces; position may vary according to your pattern size.) Cut **ACCURATELY**, cutting notches outward.
- Before removing pattern, **TRANSFER MARKINGS** and lines of construction to Wrong Side of fabric, using the Pin and Chalk Pencil method or Tracing Paper and Dressmaker Wheel. Markings needed on right side of fabric should be thread traced.
- NOTE:** Broken-line boxes (a! b! c!) in layouts represent pieces cut by measurements provided.

INTERFACING A,C,D,F

use pieces 4 6

20" (51CM)
all sizes

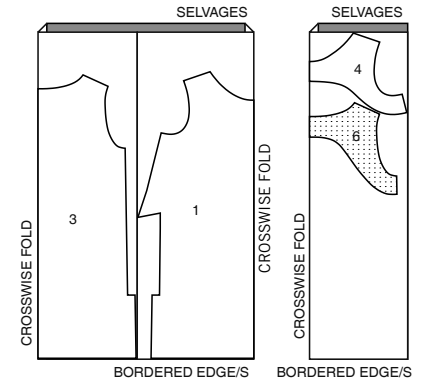


DRESS C

NOTE: CUT CROSSWISE OF BORDER PRINT FABRIC

use pieces 1 3 4 6

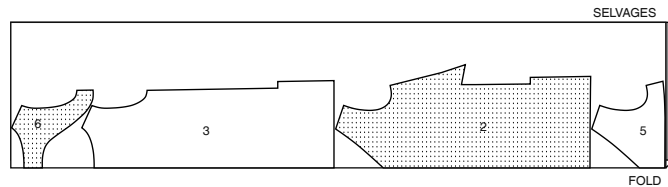
45" (115CM)
with nap
all sizes



DRESS B

use pieces 2 3 5 6

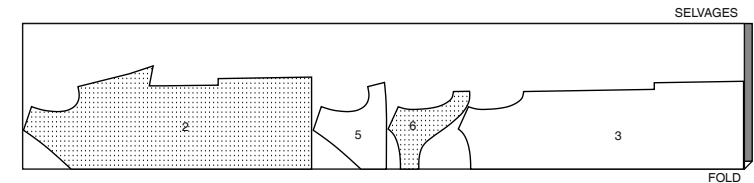
45" (115CM)
with nap
all sizes



DRESS E

use pieces 2 3 5 6

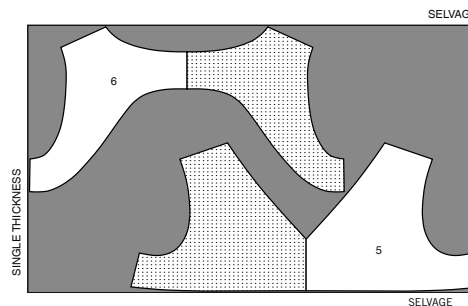
45" (115CM) with nap
all sizes



INTERFACING B,E

use pieces 5 6

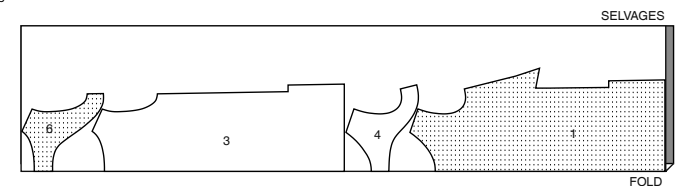
20" (51CM)
all sizes



DRESS F

use pieces 1 3 4 6

45" (115CM)
with nap
all sizes





Congrats!

You've completed your sewing adventure

**SHARE
YOUR** LOOK



Post your pattern and tag us
@simplicity_creative_group and **#mccallspatterns**
for a chance to be featured on our social media.

Look for more PDF patterns at **simplicity.com**

Have a question or need help with your sewing project call us at
1-800-782-0323

McCall's
by design...

McCall's ©2023 a division of IG Design Group Americas Inc. • Atlanta, GA 30342 USA www.thedesigngroup.com • All Rights Reserved. www.mccall.com • Made in the U.S.A. Fabriqué aux États-Unis.
To be used for individual private home use only and not for commercial or manufacturing purposes. • A usage privé seulement et non à des fins commerciales ou de production en série. • Para uso privado solamente, no se puede utilizar con propósitos de comercialización o de producción en serie.