

# McCall's

M8381

VINTAGE  
80's



**LAURA ASHLEY**  
SINCE 1953

Manufactured and distributed by IG Design Group  
American Inc. under license from Laura Ashley, Inc. ©  
& © 2023 Laura Ashley Brands. All rights reserved.



Create your own designer garment with this McCall's licensed sewing pattern.  
Créez votre propre vêtement haute couture avec ce patron de couture sous licence McCall's.



Average

### MISSES' ROBE, TIE BELT AND NIGHTGOWN

**Suggested Fabrics:** Cotton, Cotton Blends, Cotton Flannel, Crepe de Chine, Eyelet, Lightweight Linen, Seersucker, Voile. **Interfacing:** Lightweight Fusible. Not suitable for diagonals.

**Notions: Robe:** Three 3/8" (1.5cm) buttons. **Nightgown:** Four 3/8" (1cm) buttons, 1 1/2 yds. (1.4m) of 3/4" (2cm) wide ruffling.

Sizes	XS (4-6)	S (8-10)	M (12-14)	L (16-18)
European	30-32	34-36	38-40	42-44

#### BODY MEASUREMENTS: Select pattern size based on body measurements

<b>Bust</b>	29 1/2-30 1/2	31 1/2-32 1/2	34-36	38-40	Ins.
<b>Waist</b>	22-23	24-25	26 1/2-28	30-32	"
<b>Hip-9" below waist</b>	31 1/2-32 1/2	33 1/2-34 1/2	36-38	40-42	"
<b>Back-neck to waist</b>	15 1/4-15 1/2	15 3/4-16	16 1/4-16 1/2	16 3/4-17	"

<b>Robe and Tie Belt</b>	45"*	6	6 1/8	6 3/8	6 3/4	Yds.
	60"*	5 3/8	5 3/8	5 3/8	5 1/2	"

**Interfacing** 20" - 1 7/8 yds.

**Nightgown** 45" - 3 3/8 yds. 60" - 3 1/4 yds.

**Interfacing** 20" 1/2 1/2 5/8 5/8 Yd.

#### FINISHED GARMENT MEASUREMENTS (Includes Design and Wearing Ease)

<b>Bust (for Robe)</b>	40	42	45 1/2	49 1/2	Ins.
<b>Bust (for Nightgown)</b>	32	34	37 1/2	41 1/2	"
<b>Waist (for Robe)</b>	43	45	48 1/2	52 1/2	"
<b>Width, lower edge</b>					
<b>Robe</b>	68	70	73 1/2	77 1/2	Ins.
<b>Nightgown</b>	63	65	68 1/2	72 1/2	"
<b>Finished back length from base of neck</b>					
<b>Robe</b>	57 1/2	58	58 1/2	59	Ins.
<b>Nightgown</b>	56 1/2	57	57 1/2	58	"

\*with nap \*\*without nap

Moins Facile

### PEIGNOIR, CEINTURE À NOUER ET CHEMISE DE NUIT POUR JEUNES FEMMES

**Tissus Conseillés:** Coton, Cotonnades, Flanelle de coton, Crêpe de chine, Broderie anglaise, Toile de lin de poids léger, Seersucker, Voile. **Entoilage:** Thermocollant léger. Ne convient pas pour diagonales.

**Merci:** Peignoir: 3 boutons de 1.5cm. **Chemise de nuit:** 4 boutons de 1cm, 1.4m de volant de 2cm de large.

Tailles	TP/XS	P/S	M/M	G/L
Françaises	32-34	36-38	40-42	44-46
Européen	30-32	34-36	38-40	42-44

#### MESURES DU CORPS: Choisissez la taille du patron basée sur les mesures du corps

<b>Poitrine</b>	75-77	80-83	87-92	97-102	cm
<b>Taille</b>	56-58	61-64	67-71	76-81	"
<b>Hanches (23cm au-dessous de la taille)</b>	80-83	85-88	92-97	102-107	"
<b>Dos du cou à la taille</b>	39-39.5	40-40.5	41.5-42	42.5-43	"

<b>Peignoir et ceinture à nouer</b>	115cm*	5.5	5.6	5.9	6.2	m
	150cm*	5.0	5.0	5.0	5.1	"

**Entoilage** 51cm - 1.8m

**Chemise de nuit** 115cm\* - 3.4m 150cm\* - 3.0m

**Entoilage** 51cm 0.5 0.5 0.5 0.6 m

#### MESURES DES VÊTEMENTS FINI (Motif et aisance de port compris)

<b>Poitrine (pour peignoir)</b>	102	107	116	126	cm
<b>Poitrine (pour chemise de nuit)</b>	81	86	95	105	"
<b>Taille (pour peignoir)</b>	109	114	123	133	"
<b>Largeur à l'ourlet</b>					
<b>Peignoir</b>	173	178	187	197	cm
<b>Chemise de nuit</b>	160	165	174	184	"
<b>Longueur finie - dos, votre nuque à l'ourlet</b>					
<b>Peignoir</b>	146	147	149	150	cm
<b>Chemise de nuit</b>	144	145	146	147	"

\*avec sens \*\*sans sens



M8381

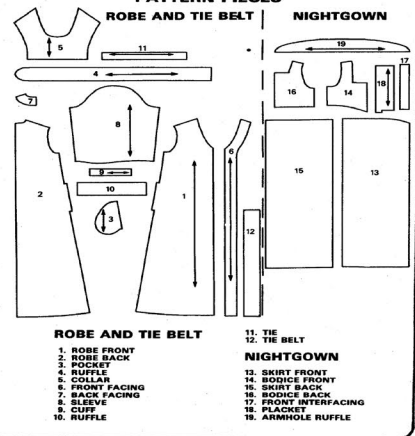
**AUTHENTIC VINTAGE PATTERN REPRODUCTION**

INCLUDES ADDITIONAL SIZE OPTIONS AND CUTTING LAYOUTS

**9437 McCALL'S**



**PATTERN PIECES**



**ROBE AND TIE BELT**

- ROBE FRONT
- ROBE BACK
- POCKET
- RUFFLE
- COLLAR
- FRONT FACING
- BACK FACING
- SLEEVE
- CLIFF
- RUFFLE

**NIGHTGOWN**

- SHIRT FRONT
- BODICE FRONT
- SHIRT BACK
- BODICE BACK
- FRONT INTERFACING
- PLACKET
- ARMHOLE RUFFLE

**INTERFACING GUIDE**

Use this handy reference chart as a guide when selecting your interfacing. Always test for compatibility by fusing or sewing a piece of interfacing to your fabric before applying it to your garment.

	Fabric	Interfacing (F) = Fusible (NF) = Non-fusible	
Separates and Dresses (sheer shaping)	voile, chiffon, lawn, gauze, batiste, tulle, georgette, demimé, crepe de chine, charmeuse	<ul style="list-style-type: none"> <li>Sheer Blenders #907 (F)</li> <li>Sheer Fuse (F)</li> <li>Sheer Sew-in (NF)</li> <li>Sheerweight #906 (NF)</li> <li>Sheerweight #906 (F)</li> </ul>	
	(soft shaping)	<ul style="list-style-type: none"> <li>Add Shape Featherlite (NF)</li> <li>Easy Knit (F)</li> <li>Easy Shaper (F)</li> <li>Featherweight #910 All Bias (NF)</li> <li>Soft-Shape #880 All-Bias (F)</li> </ul>	
(crisp shaping)	shirtings, gingham, poplin, chambray, seersucker, cotton, broadcloth, corduroy, lightweight linen, cotton blends, one-ounce denim	<ul style="list-style-type: none"> <li>Featherweight #911 All-Bias (F)</li> <li>Shape-Fuse (F)</li> <li>Shapewell #70 (F)</li> <li>Shapewell #70 (NF)</li> <li>Stit-Shape Durable Press (NF)</li> <li>Sure Fuse (F)</li> <li>Verifirm Durable Press (NF)</li> </ul>	
	Coats, Dresses, Jackets and Suits (soft shaping)	<ul style="list-style-type: none"> <li>wool, linen, denim, poplin, corduroy, tweed, flannel, gabardine, mohair, and suede</li> </ul>	<ul style="list-style-type: none"> <li>Easy Shaper Suitweight (F)</li> <li>Soft-Shape #880 All-Bias (F)</li> <li>Soft-Shape (F)</li> <li>Tailor's Touch (F)</li> <li>Easy Shaper #77 (NF)</li> <li>Midweight #920 All-Bias (NF)</li> <li>Midweight #911 (F)</li> <li>Pat-Aire Suitweight #881 (F)</li> </ul>
(crisp shaping)	Knits Only	<ul style="list-style-type: none"> <li>double knits, cotton or blended knits, single knits, lightweight sweater knits, terry, jersey, lightweight tular, sweatshirt fleece</li> </ul>	<ul style="list-style-type: none"> <li>Easy-Knit (F)</li> <li>Easy Shaper Lightweight (F)</li> <li>Featherweight #910 All-Bias (NF)</li> <li>Intronic Bias Featherweight (NF)</li> <li>Soft-Shape #882 All-Bias (F)</li> <li>Stretch-Ease (F)</li> </ul>
			<ul style="list-style-type: none"> <li>Pellon</li> <li>Stacy</li> </ul>

• Sheer Blenders, Soft-Shape, Pat-Aire and Stretch-Ease are registered trademarks of the Pellon Corporation.  
• These products are registered trademarks of Stacy Fabric Corporation.  
For FUSIBLE Interfacing, follow manufacturer's directions.

**SEWING INFORMATION**

**PIN AND FIT**  
Pin or baste seams, RIGHT SIDES TOGETHER, matching notches. Fit garment before stitching major seams.

**STITCH**  
Use 5/8" (1.5cm) seam allowance unless otherwise specified. Use guide line marking on throat plate of machine for accurate seam allowance.

If your machine does not have this marking, make your own with adhesive tape placed 5/8" (1.5cm) from needle hole.

**GRADE**  
Cut seam allowances to graduated widths and interfacing close to stitching.

**PRESS**  
Press seams open unless otherwise stated. Clip if necessary to press seams flat.

**EDGE-STITCHING**  
On OUTSIDE, stitch close to seams or finished edge.

**TOP-STITCHING**  
On OUTSIDE, stitch 1/4" to 3/8" (6mm to 1cm) away from seam or finished edge, using presser foot as a guide.

**PATTERN MARKINGS**

**GRAINLINE:** Place on straight grain of fabric, an even distance from selvage.

**FOLD LINE:** Place on fold of fabric.

**CUTTING LINE:** For cutting.

**SEAM LINE:** For stitching.

**SEAM ALLOWANCE:** Distance between cutting and seam lines, usually 5/8" (1.5cm).

**NOTCHES AND CIRCLES:** For matching pattern pieces.

**ADJUST IF NECESSARY**

A pattern is made to fit body measurements, with extra ease for comfort and style.

Adjust pieces before placing on fabric. Adjust back waist and finished garment lengths using McCALL'S Easy-Rule Guide.

**TO SHORTEN:** Crease on Easy-Rule Guide. Fold necessary amount. Tape in place.

**TO LENGTHEN:** Cut on dotted lines of Easy-Rule Guide. Spread necessary amount. Tape over paper.

**CUTTING AND MARKING**

**SHRINK FABRIC** not labeled pre-shrunk. Press.

**CIRCLE LAYOUT** for View, Size, Fabric Width.

Use **WITH NAP** layout for fabrics with one-way designs, nap, pile or surface shading.

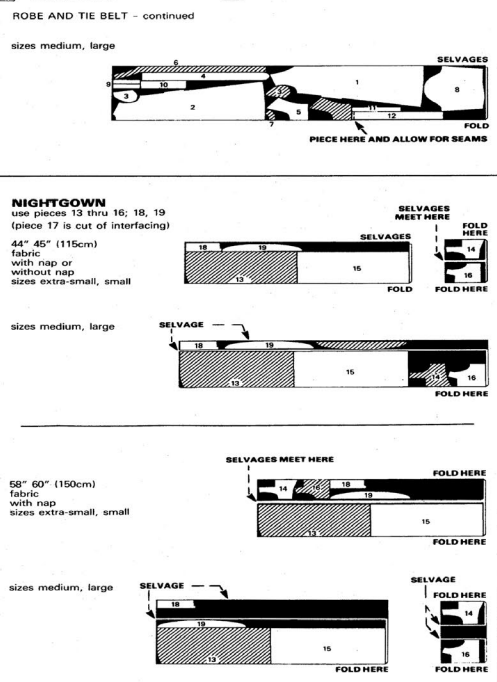
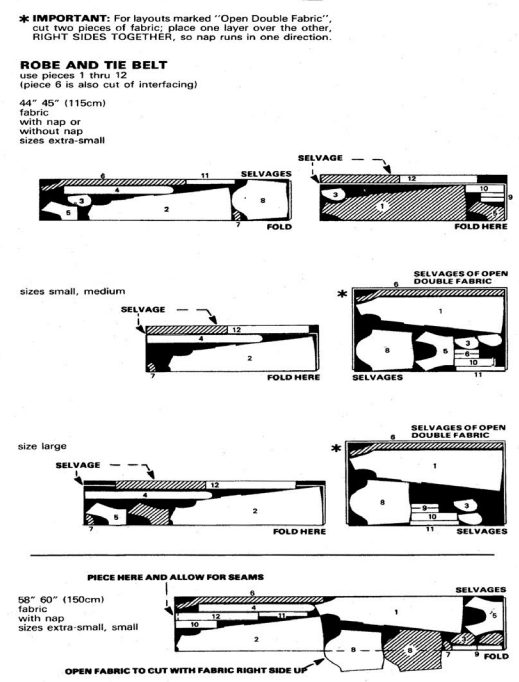
For **DOUBLE THICKNESS** - fold fabric with Right Sides Together.

For **SINGLE THICKNESS** - place fabric Right Side Up.

Before **CUTTING** place all pieces on fabric according to layout. Overlap margins. Pin. Cut **ACCURATELY** through fabric and pattern on cutting line. Cut notches outward.

**BEFORE REMOVING PATTERN,** transfer markings to Wrong Side of fabric. Two ways which may be used quickly are the Pin and Chalk Pencil method or Tracing Paper and Dressmaker Wheel.

**CUTTING LAYOUTS**



**FABRIC KEY**

**SEWING DIRECTIONS**

**ROBE**

**1. FRONTS AND BACK**

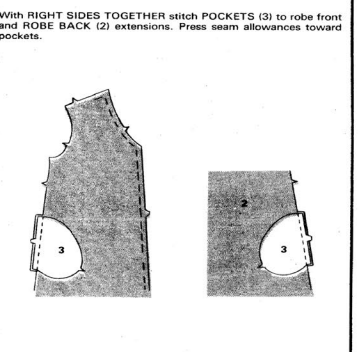
With **RIGHT SIDES TOGETHER** stitch POCKETS (3) to robe front and ROBE BACK (2) extensions. Press seam allowances toward pockets.

Clip back seam allowances above and below pocket.

Press side seams open. Turn pocket toward front and press front lightly along solid line.

Stitch pockets to fronts on dotted stitching lines.

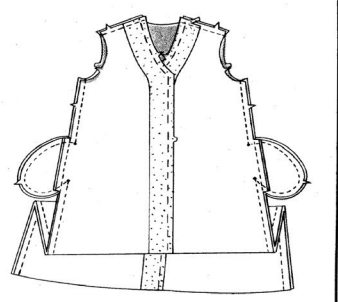
Stitch center back seam of RUFFLE (4).



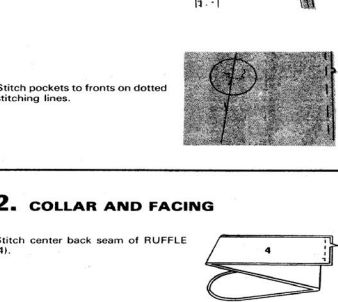
Pin fronts to back at shoulders and sides, matching notches and circles. Pin pocket edges together.

Stitch shoulder seams, easing back to fit. Cut interfacing close to stitching.

Stitch side seams from lower edge to lower circle; continue around pocket to upper circle; then from upper circle to upper edge.



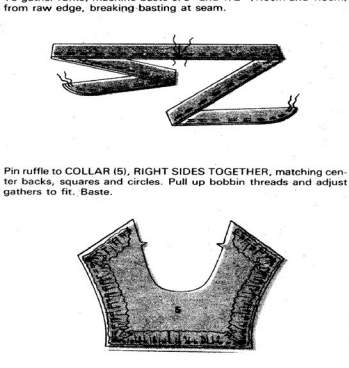
Stitch center back seam of RUFFLE (4).



Fold ruffle in half lengthwise, **WRONG SIDES TOGETHER**. Press.

To gather ruffle, machine-baste 5/8" and 1/2" (1.5cm and 1.3cm) from raw edge, breaking basting at seam.

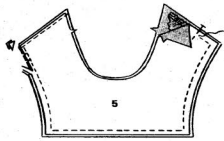
Pin ruffle to COLLAR (5), **RIGHT SIDES TOGETHER**, matching center backs, squares and circles. Pull up bobbin threads and adjust gathers to fit. Baste.



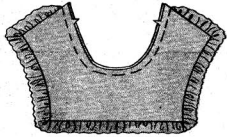


9437

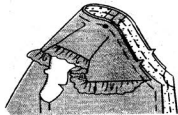
Pin COLLAR FACING (5) to collar, RIGHT SIDES TOGETHER. Stitch along UN-NOTCHED edges.  
Cut corners diagonally. GRADE seam allowances: see SEWING INFORMATION. Clip curves.



Turn RIGHT SIDE OUT. Press. Baste raw edges together.

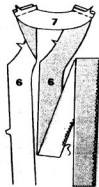


Pin collar to neck edge, RIGHT SIDE UP, matching notches, center backs, LARGE circles to shoulder seams and small circles. Baste.



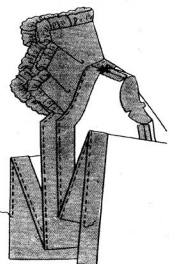
Stitch BACK FACING (7) to each FRONT FACING (6) at shoulders.

Finish UN-NOTCHED edge of facing with zigzag stitching or turning under 1/4" (6mm) and edge-stitching.



Pin facing to front and neck edges, RIGHT SIDES TOGETHER, matching notches. Baste. Stitch.

Cut corners diagonally. GRADE seam allowances. Clip curve.



Turn facing to INSIDE. Cut interfacing even with facing if necessary. Catch-stitch facing to seams.

Top-stitch 1/4" (6mm) from front and neck edge, lifting up collar and ending stitching about 6" (15cm) above lower edge.

### 3. SLEEVES

To gather cap of SLEEVE, (8) machine-baste 5/8" and 1/2" (1.5cm and 1.3cm) from raw edge between small circles.

To ease cap, machine-baste 5/8" (1.5cm) from raw edge between notches and small circles.

Stitch sleeve seam.

To gather lower edge of sleeve, machine-baste 5/8" and 1/2" (1.5cm and 1.3cm) from raw edge.

Stitch seam in CUFF (9).

Stitch RUFFLE (10) seam. Fold ruffle in half lengthwise, WRONG SIDES TOGETHER. Baste raw edges together.

To gather ruffle, machine-baste 5/8" and 1/2" (1.5cm and 1.3cm) from raw edge.

Pin ruffle to cuff, RIGHT SIDES TOGETHER, matching seams and circles. Pull up bobbin threads and adjust gathers to fit. Baste.

Stitch seam of CUFF FACING (9). Press under 5/8" (1.5cm) on NOTCHED edge of facing.

Pin cuff facing to cuff, RIGHT SIDES TOGETHER (over ruffle), matching seams and circles. Stitch.

GRADE seam allowances.

Turn RIGHT SIDE OUT. Press.

Pin cuff to sleeve, RIGHT SIDES TOGETHER, matching notches and seams. Pull up bobbin threads and adjust gathers to fit. Baste. Stitch.

GRADE seam allowances. Press seam allowances toward cuff.

Pin free edge of cuff facing over seam. Hem in place.

Edge-stitch cuff: see SEWING INFORMATION.

With RIGHT SIDES TOGETHER, pin sleeve into armhole, matching notches, underarm seams, small circles and LARGE circle to shoulder seam. Pull up bobbin threads to gather above small circles and ease between small circles and notches. Adjust gathers evenly. Baste. Stitch.

Stitch again 1/4" (6mm) from first stitching. Cut seam allowances close to second stitching below notches.

### 4. FINISHING

#### BUTTONHOLES AND BUTTONS

Make buttonholes in RIGHT front at markings.

Lap fronts, matching centers. Mark and sew buttons under buttonholes.

### HEM

Mark hemline.

Turn up lower edge on hemline, opening out facings. Hand-baste close to fold. Press. Trim hem to an even width.

Press under 1/4" (6mm) on raw edge. Machine-baste close to turned edge. Pull up bobbin thread to ease in fullness. Press. Baste inner edge of hem to robe. Stitch as basted.

Turn facings to INSIDE again and slipstitch to hem.

Top-stitch 1/4" (6mm) from front edge connecting stitching with previous stitching.

### TIES

Fold each TIE (11) in half lengthwise, RIGHT SIDES TOGETHER. Stitch raw edges together, taking up a 3/8" (1cm) seam allowance and leaving end nearest notch open for turning.

Cut corners diagonally.

Turn RIGHT SIDE OUT. Press.

Pin raw edge of tie 3/8" (1cm) over line indicated on front (raw end should be downward). Stitch 3/8" (1cm) from raw edge.

Fold tie over raw end and stitch again covering raw edge.

### TIE BELT

If TIE BELT (12) has been pieced, stitch seam.

Fold tie belt in half lengthwise, RIGHT SIDES TOGETHER. Stitch raw edges together, taking up a 3/8" (1cm) seam allowance and leaving an opening for turning.

Cut corners diagonally.

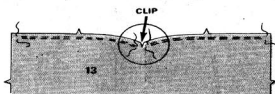
Turn RIGHT SIDE OUT. Press. Slipstitch opening edges together.

### NIGHTGOWN

#### 1. FRONT AND BACK

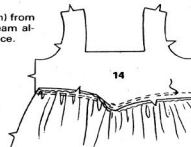
To gather upper edge of SKIRT FRONT, (13), machine-baste 5/8" and 1/2" (1.5cm and 1.3cm) from raw edge, between side seam line and basting 5/8" (1.5cm) from center front.

Make a clip at center front from upper edge to seam line.

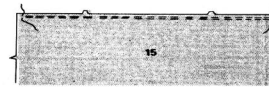


Pin BODICE FRONT (14) to skirt front, RIGHT SIDES TOGETHER, matching notches and centers. Pull up bobbin threads and adjust gathers to fit. Baste. Stitch.

Stitch again 1/4" (6mm) from first stitching. Turn seam allowances toward bodice.



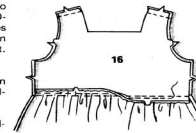
To gather upper edge of SKIRT BACK (15), machine-baste 5/8" and 1/2" (1.5cm and 1.3cm) from raw edge between side seam lines.



Pin BODICE BACK (16) to skirt back, RIGHT SIDES TOGETHER, matching notches and centers. Pull up bobbin threads; adjust gathers to fit. Baste. Stitch.

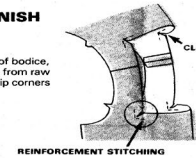
Stitch again 1/4" (6mm) from first stitching. Turn seam allowances toward bodice.

Stitch back to front at shoulders.



#### 2. NECKLINE FINISH

To reinforce inward corners of bodice, machine-stitch 5/8" (1.5cm) from raw edge each side of corners. Clip corners to stitching.

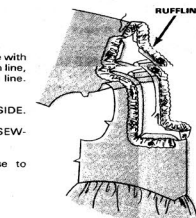


Pin lace ruffling to neck edge with straight edge just inside seam line, turning up ends at stitching line. Stitch.

Turn seam allowances to INSIDE.

Edge-stitch neck edge: see SEWING INFORMATION.

Cut seam allowances close to stitching.



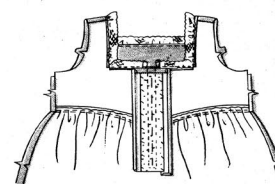
#### 3. PLACKET

Baste FRONT INTERFACING (17) to WRONG SIDE of PLACKET (18) having long straight edges along fold line. Baste together along solid line. Sew to fold line.

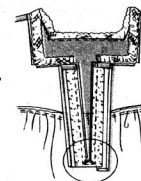
Press under 5/8" (1.5cm) at upper edge of placket.

Press under 1/4" (6mm) on side edges and lower extension.

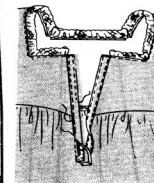
Pin RIGHT SIDE of placket to WRONG SIDE of front, matching solid lines. Stitch along dotted stitching lines.



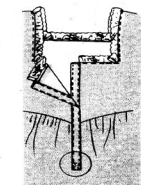
Cut along solid line and diagonally to corners.



Turn placket to OUTSIDE. Press lower end of opening downward and long seam allowances toward placket.



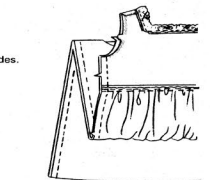
Fold placket on fold line, WRONG SIDES TOGETHER. Baste placket in place. Stitch all edges of placket, stopping stitching at lower edge of opening.



Lap RIGHT front over LEFT, matching centers. Pin. Stitch lower edge of placket to front and along dotted lines.

#### 4. SIDE SEAMS AND ARMHOLE FINISH

Stitch back to front at sides.



Finish straight edge of each ARMHOLE RUFFLE (19) with a 3/8" (1cm) narrow hem.

To gather NOTCHED edge of armhole ruffle, machine-baste 5/8" and 1/2" (1.5cm and 1.3cm) from raw edge.



Pin armhole ruffle to armhole, RIGHT SIDES TOGETHER, matching notches, circles to shoulder seams and having ends at underarm seam. Pull up bobbin threads and adjust gathers to fit. Baste. Stitch.

Stitch again 1/4" (6mm) from first stitching. Cut seam allowance close to second stitching.



Turn seam allowance toward bodice.

Edge-stitch armhole edge of bodice: see SEWING INFORMATION.



#### 5. FINISHING

##### BUTTONHOLES AND BUTTONS

Make buttonholes in RIGHT front at markings.

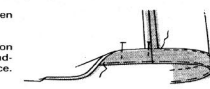
Sew buttons to positions on LEFT FRONT

##### HEM

Mark hemline.

Turn up lower edge on hemline. Hand-baste close to fold. Press. Trim hem to an even width.

Turn under 1/4" (6mm) on raw edge and pin or hand-baste in place. Stitch in place. Press.



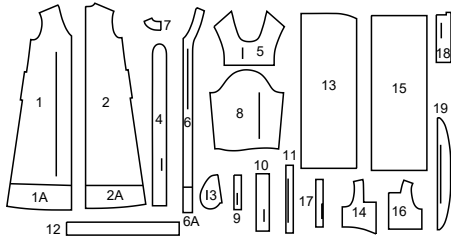
M8381

McCall's®

English

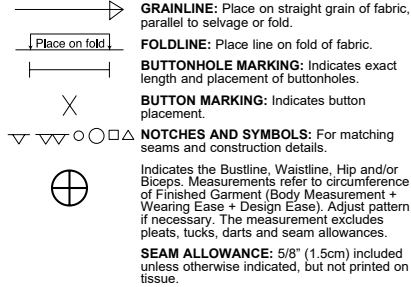
1-800-782-0323

19 PATTERN PIECES

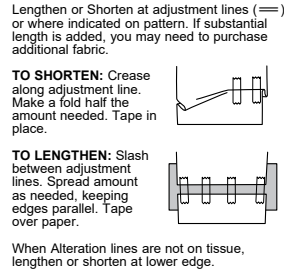


- 1(1A) Robe Front
- 2(2A) Robe Back
- 3 Pocket
- 4 Ruffle (for Collar for Robe)
- 5 Collar (for Robe)
- 6(6A) Front Facing (for Robe)
- 7 Back Facing (for Robe)
- 8 Sleeve (for Robe)
- 9 Cuff (for Robe)
- 10 Ruffle (for Robe)
- 11 Tie (for Robe)
- 12 Tie Belt (for Robe)
- 13 Skirt Front (for Nightgown)
- 14 Bodice Front (for Nightgown)
- 15 Skirt Back (for Nightgown)
- 16 Bodice Back (for Nightgown)
- 17 Front Interfacing (for Nightgown)
- 18 Placket (for Nightgown)
- 19 Armhole Ruffle (for Nightgown)

PATTERN MARKINGS



ADJUST IF NECESSARY



CUTTING AND MARKING

**SHRINK FABRIC** if not labeled pre-shrunk. Press.  
**CIRCLE LAYOUT** for View, Size, Fabric Width.  
 Use **WITH NAP** layout for fabrics with one-way designs, nap, pile or surface shading. Because most knits have surface shading, a with nap layout is used.  
 For **DOUBLE THICKNESS (WITH FOLD)** - fold fabric with right sides together.  
**\* DOUBLE THICKNESS (WITHOUT FOLD)** - For fabrics with nap, fold fabric crosswise, right sides together. Mark as shown. Cut along crosswise fold of fabric (A). Turn upper layer 180° so arrows go in same direction and place over lower layer, right sides together (B).  
 For **SINGLE THICKNESS** - place fabric right side up. (For Fur Pile fabrics, place pile side down).  
 ★ Cut other pieces first, allowing enough fabric to cut this piece. Open fabric. For "Cut 1" pieces, cut piece once on single layer of fabric with piece face up on right side of fabric.  
 Pattern may have cutting lines for several sizes. Select the proper cutting line or pattern pieces for your size.  
 Before **CUTTING** place all pieces on fabric according to layout. Pin. (Layouts show approximate position of pattern pieces; position may vary according to your pattern size.) Cut **ACCURATELY**, cutting notches outward.  
 Before removing pattern, **TRANSFER MARKINGS** and lines of construction to Wrong Side of fabric, using the Pin and Chalk Pencil method or Tracing Paper and Dressmaker Wheel. Markings needed on right side of fabric should be thread traced.  
**NOTE:** Broken-line boxes (a! b! c!) in layouts represent pieces cut by measurements provided.

CUTTING LAYOUTS

SUPPLEMENTAL CUTTING LAYOUTS

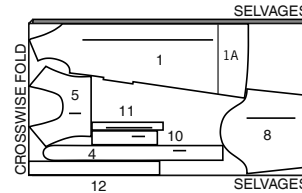
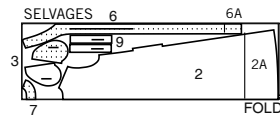
RIGHT SIDE OF PATTERN	WRONG SIDE OF PATTERN	RIGHT SIDE OF FABRIC	WRONG SIDE OF FABRIC
-----------------------	-----------------------	----------------------	----------------------

ROBE AND TIE BELT

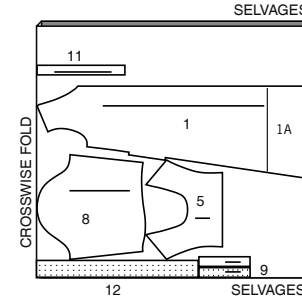
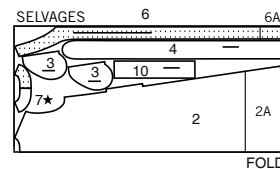
use pieces 1(1A) 2(2A) 3 4 5 6(6A) 7 8 9 10 11 12

45" (115CM) with nap / all sizes

**NOTE:** BEFORE CUTTING FABRIC, JOIN PIECES IN PARENTHESIS TO CORRESPONDING PIECES FOLLOWING INSTRUCTIONS ON TISSUE PATTERN.



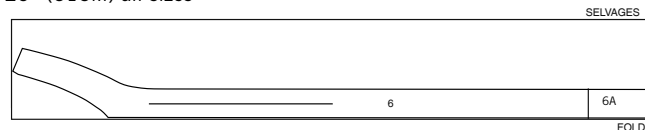
60" (150CM) with nap / all sizes



INTERFACING

use pieces 6 (6A)

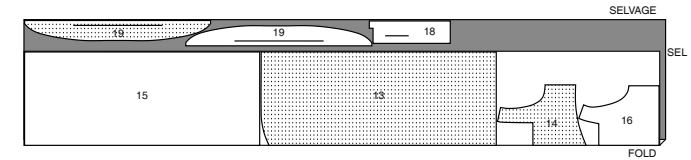
20" (51CM) all sizes



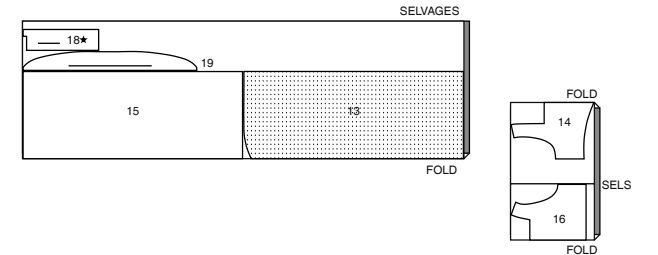
NIGHTGOWN

use pieces 13 14 15 16 18 19

45" (115CM) with nap / all sizes



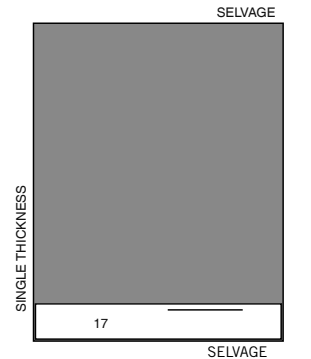
60" (150CM) with nap / all sizes



INTERFACING

use pieces 17

20" (51CM)  
all sizes





# Congrats!

You've completed your sewing adventure

---

**SHARE  
YOUR** LOOK



Post your pattern and tag us  
[@simplicity\\_creative\\_group](#) and [#simplicitypatterns](#)  
for a chance to be featured on our social media.

Look for more PDF patterns at [simplicity.com](https://www.simplicity.com)

Have a question or need help with your sewing project call us at  
1-800-782-0323

**McCall's**  
by **design**<sub>group</sub>