

# McCall's

Easy

Facile

ROBE ENVELOPPANTE POUR JEUNES FEMMES

**Tissus Conseillés:** Coton léger, Cotonnades, Challis, Crêpe de chine.

**Mercerie: A,B:** 1.9m d'élastique de 6mm, 2 paquets de ruban de biais simple de 1.3cm.

Tailles	6	8	10	12	14	16	18	20	22	24
Françaises	34	36	38	40	42	44	46	48	50	52
Européen	32	34	36	38	40	42	44	46	48	50

**MESURES DU CORPS:** Choisissez la taille du patron basée sur les mesures du corps

<b>Poitrine</b>	78	80	83	87	92	97	102	107	112	117	cm
<b>Taille</b>	58	61	64	67	71	76	81	87	94	99	"
<b>Hanches (23cm au-dessous de la taille)</b>	83	85	88	92	97	102	107	112	117	122	cm
<b>Dos du cou à la taille</b>	39.5	40	40.5	41.5	42	42.5	43	44	44.5	45	"

## Robe A

115cm*	5.8	5.9	6.0	6.1	6.2	6.2	6.2	6.3	6.3	6.4	m
150cm*	4.8	4.8	4.8	4.8	4.8	5.3	5.3	5.4	5.6	5.9	"

## Robe B

115cm*	4.4	4.4	4.4	4.5	4.5	4.5	4.8	5.0	5.1	5.1	m
150cm*	3.5	3.5	3.5	3.6	3.7	3.9	4.0	4.2	4.4	4.4	"

**MESURES DES VÊTEMENTS FINI (Motif et aisance de port compris)**

<b>A,B Poitrine</b>	122	125	127	131	136	141	146	151	156	161	cm
<b>A,B Taille</b>	137	140	142	146	151	156	161	166	171	176	"
<b>A,B Hanches</b>	155	157	160	164	169	174	179	184	190	194	"

**Largeur à l'ourlet**

<b>Robe A</b>	173	175	178	182	187	192	197	202	207	212	cm
<b>Robe B</b>	196	198	201	204	210	215	220	225	230	235	"

Longueur finie – dos, votre nuque à l'ourlet

Robe A,B	119	120	121	121	122	123	123	124	124	125 cm
----------	-----	-----	-----	-----	-----	-----	-----	-----	-----	--------

美 avec sens    美美 sans sens



A



1



日



B

available in U.S.A. Canada, Australia and New Zealand only. Disponible aux États-Unis, au Canada, en Australie et en Nouvelle-Zélande seulement.

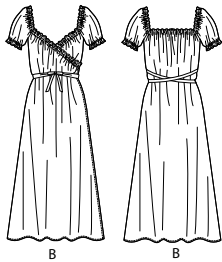
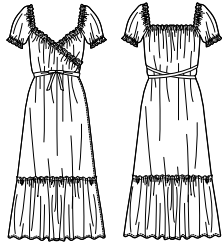
VINTAGE  
70's

**LAURA ASHLEY**  
SINCE 1953  
Manufactured and distributed by IG Design Group  
Americas Inc. under license from Laura Ashley, Inc.  
© & ©2023 Laura Ashley Brands. All rights reserved.

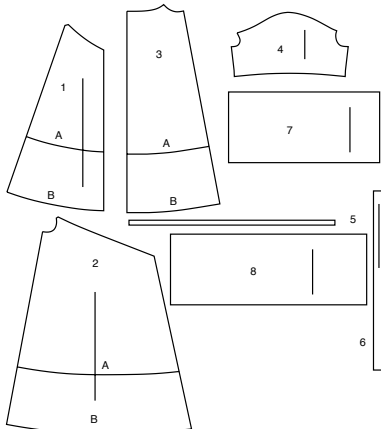
Create your own designer garment with this McCall's licensed sewing pattern.  
Créez votre propre vêtement haute couture avec ce patron de couture sous licence McCall's.



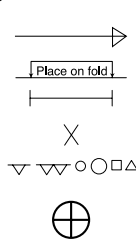
Designed and  
printed in USA



8 PATTERN PIECES



- 1 SIDE FRONT - A,B
- 2 FRONT - A,B
- 3 BACK - A,B
- 4 SLEEVE - A,B
- 5 ELASTIC GUIDE - A,B
- 6 TIE BELT - A,B
- 7 FRONT RUFFLE - A
- 8 RUFFLE - A



PATTERN MARKINGS

**GRAINLINE:** Place on straight grain of fabric, parallel to selvage or fold.

**FOLDLINE:** Place line on fold of fabric.

**BUTTONHOLE MARKING:** Indicates exact length and placement of buttonholes.

**BUTTON MARKING:** Indicates button placement.

**NOTCHES AND SYMBOLS:** For matching seams and construction details.

Indicates the Bustline, Waistline, Hip and/or Biceps. Measurements refer to circumference of Finished Garment (Body Measurement + Wearing Ease + Design Ease). Adjust pattern if necessary. The measurement excludes pleats, tucks, darts and seam allowances.

**SEAM ALLOWANCE:** 5/8" (1.5cm) included unless otherwise indicated, but not printed on tissue.

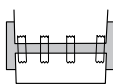
ADJUST IF NECESSARY

Lengthen or Shorten at adjustment lines (==) or where indicated on pattern. If substantial length is added, you may need to purchase additional fabric.

**TO SHORTEN:** Crease along adjustment line. Make a fold half the amount needed. Tape in place.

**TO LENGTHEN:** Slash between adjustment lines. Spread amount as needed, keeping edges parallel. Tape over paper.

When Alteration lines are not on tissue, lengthen or shorten at lower edge.



CUTTING AND MARKING

★ Cut other pieces first, allowing enough fabric to cut this piece. Open fabric. For "Cut 1" pieces, cut piece once on single layer of fabric with piece face up on right side of fabric.

Pattern may have cutting lines for several sizes. Select the proper cutting line or pattern pieces for your size.

Before **CUTTING** place all pieces on fabric according to layout. Pin. (Layouts show approximate position of pattern pieces; position may vary according to your pattern size.) Cut **ACCURATELY**, cutting notches outward.

Before removing pattern, **TRANSFER MARKINGS** and lines of construction to Wrong Side of fabric, using the Pin and Chalk Pencil method or Tracing Paper and Dressmaker Wheel. Markings needed on right side of fabric should be thread traced.

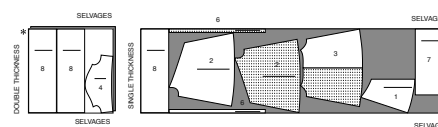
**NOTE:** Broken-line boxes (at bt cl) in layouts represent pieces cut by measurements provided.

CUTTING LAYOUTS

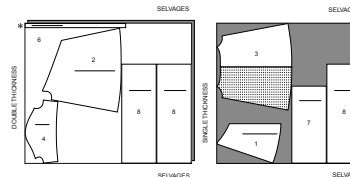
DRESS A

use pieces: 1 2 3 4 6 7 8  
PIECE 5 IS CUT OF ELASTIC

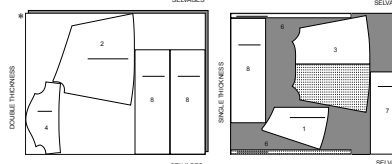
45" (115 cm)  
with nap  
all sizes



60" (150 cm)  
with nap  
sizes 6 8 10 12 14 16



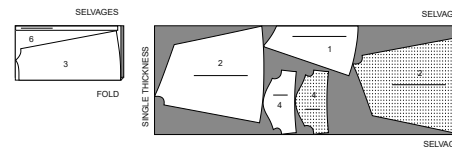
60" (150 cm)  
with nap  
sizes 18 20 22 24



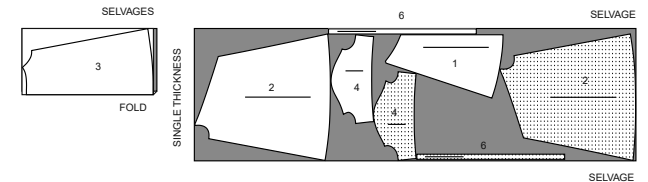
DRESS B

use pieces: 1 2 3 4 6  
PIECE 5 IS CUT OF ELASTIC

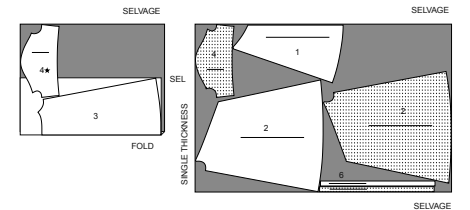
45" 115 cm)  
with nap  
sizes 6 8 10  
12 14 16



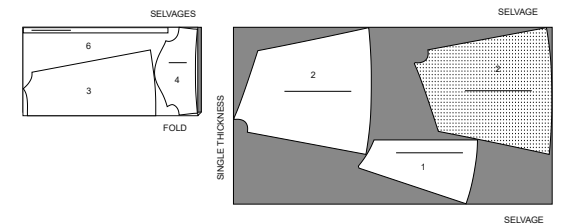
45" (115 cm)  
with nap  
sizes 18 20 22 24



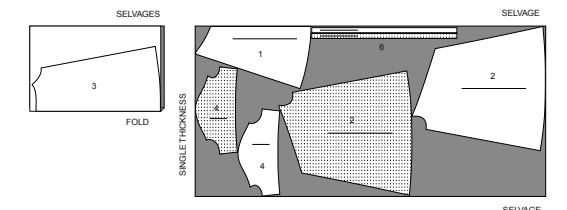
60" (150 cm)  
with nap  
sizes 6 8 10 12 14 16



60" (150 cm)  
with nap  
sizes 18 20 22

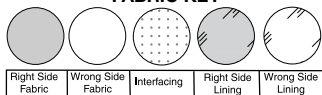


60" (150 cm)  
with nap  
size 24



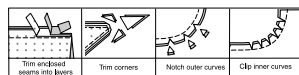
## SEWING INFORMATION

## FABRIC KEY



## SEAM ALLOWANCES

Use 5/8" (1.5cm) seam allowances unless otherwise indicated.



## PIN AND FIT

Pin or baste seams, **RIGHT SIDE TOGETHER**, matching notches. Fit garment before stitching major seams.

## PRESS

Press seam allowances flat; then open unless otherwise stated. Clip where necessary so they lie flat.

## GLOSSARY

Sewing terms appearing in **BOLD TYPE** in Sewing Instructions are explained below.

**NARROW HEM** - Turn in hem; press, easing in fullness if necessary. Open out hem. Turn in again so raw edge is along crease; press. Turn in along crease; stitch.

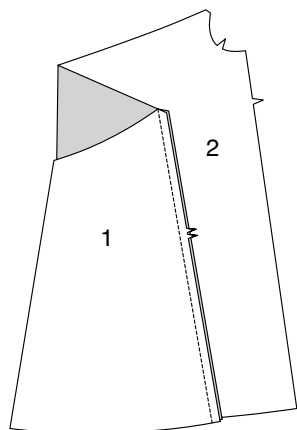
## SEWING DIRECTIONS

## DRESS A, B

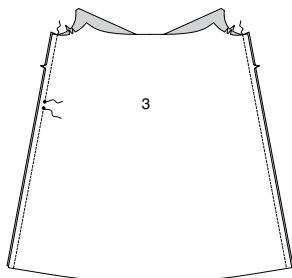
**NOTE:** Dress may be worn with front in back.

## 1. FRONT AND BACK

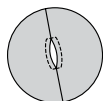
1. Stitch **SIDE FRONT** (1) to **FRONT** (2), matching double notches.



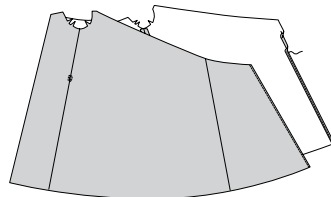
2. Pin **BACK** (3) to front sections at side seams, matching single notches on both edges and small dots on **RIGHT** edges. Stitch **LEFT** side seam. Stitch **RIGHT** side seam, leaving seam open between small dots.



3. On **OUTSIDE**, stitch around opening in **RIGHT** side seam, as illustrated

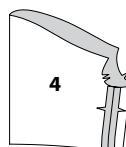


4. To finish front edges with a 5/8" (1.5cm) **NARROW HEM**, turn under hem allowance; press, easing in fullness if necessary. Open out hem. Turn in again so raw edge is along crease; press; stitch.

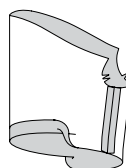


## 2. SLEEVES

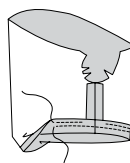
5. Stitch underarm seam of **SLEEVE** (4) sections



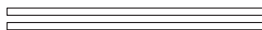
6. Press lower edge of sleeve to **INSIDE** along foldline.



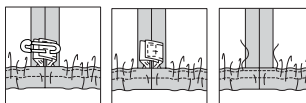
7. To form casing for elastic, turn under 1/4" (6mm) on raw edge and stitch in place, leaving an opening to insert elastic. Stitch again 1/2" (1.3cm) from turned under edge, forming a little ruffle.



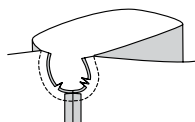
8. Cut two pieces of elastic a comfortable upper arm measurement plus 1/2" (1.3cm).



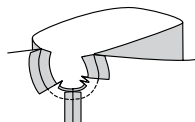
9. Insert elastic through casing. Lap ends 1/2" (1.3cm) and sew together. Stitch opening closed.



10. Pin sleeve to underarm edge of front and back, right sides together, matching notches and underarm seam. Stitch.

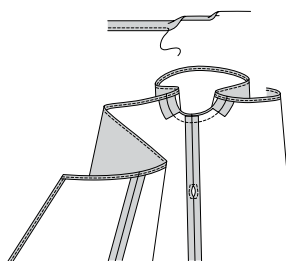


11. Clip seam allowances on front and back armhole just above notches. Press seam open above clips.

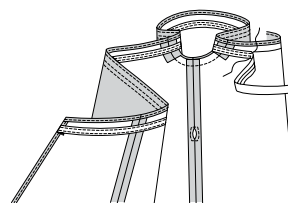


## 3. NECKLINE FINISH

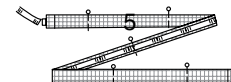
12. To finish upper edge of dress with a 3/8" (1cm) **NARROW HEM**, turn under hem allowance. Turn in 1/8" (3mm) on inner raw edge. Stitch close to inner edge.



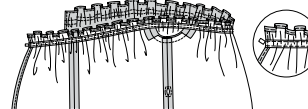
13. To form casing, pin upper edge of single fold bias tape to front, back, and sleeves along placement line, **WRONG SIDES TOGETHER**, turning in ends. Stitch close to long edges of tape.



14. Cut one piece of elastic the length of **GUIDE FOR ELASTIC** (5) pattern piece.



15. Insert elastic through casing, having ends extend 5/8" (1.5cm) beyond ends of casing. Pin. Stitch across ends of casing, catching in elastic. Pull out elastic and cut close to stitching.



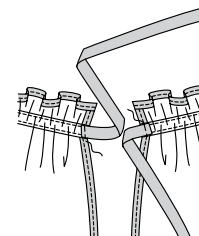
16. Fold each **TIE BELT** (6) section in half, lengthwise, with **RIGHT** sides together. Stitch in a 3/8" (1cm) seam, leaving an opening in long edge for turning. Cut corners diagonally.



17. Turn tie **RIGHT** side out. Slipstitch opening edges together. Press.

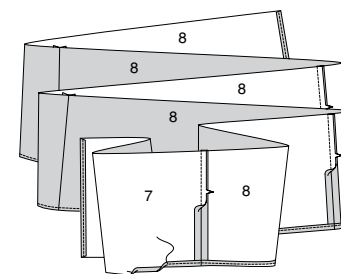


18. On inside, center and pin ties to fronts over casing, having fold edge upward and end extending 3/8" (1cm) beyond front edge. Stitch in place.

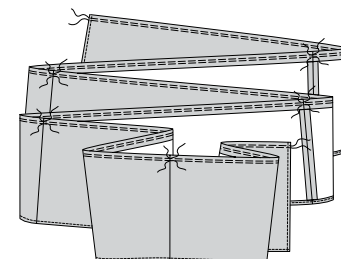


## 4. RUFFLE-VIEW A

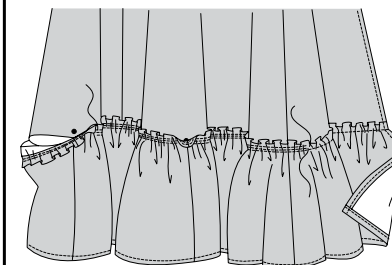
19. Stitch **FRONT RUFFLE** (7) to one **RUFFLE** (8) section. Stitch remaining seams of ruffle 8 sections, forming one long ruffle. Cut off notches on front edges. Finish lower and front edges with a 5/8" (1.5cm) **NARROW HEM**.



20. Press upper edge of ruffle to **INSIDE** along fold line. To gather ruffle, machine-baste along lines indicated on pattern, breaking basting at seams.

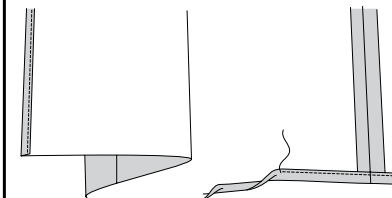


21. With **RIGHT** sides facing up towards you, pin ruffle to lower edge of dress, matching front edges, **RIGHT** front seam, and remaining seams to large dots. Adjust gathers to fit, centering gathering lines 5/8" (1.5cm) from lower edge of dress. Baste. Stitch between gathering lines. Remove machine-basting.



## 5. HEM-VIEW B

22. Finish lower edge of dress with a 5/8" (1.5cm) **NARROW HEM**.





# Congrats!

You've completed your sewing adventure

---

## SHARE YOUR LOOK



Post your pattern and tag us  
[@simplicity\\_creative\\_group](#) and [#simplicitypatterns](#)  
for a chance to be featured on our social media.

Look for more PDF patterns at [simplicity.com](#)

Have a question or need help with your sewing project call us at  
1-800-782-0323

**McCall's**  
by **design**<sub>group</sub>

McCall's ©2023 a division of IG Design Group Americas Inc. • Atlanta, GA 30342 USA [www.thedesigngroup.com](#) • All Rights Reserved. [www.mccall.com](#) • Made in the U.S.A. Fabriqué aux États-Unis.

To be used for individual private home use only and not for commercial or manufacturing purposes. • A usage privé seulement et non à des fins commerciales ou de production en série. • Para uso privado solamente, no se puede utilizar con propósitos de comercialización o de producción en serie.