



>> MEN'S JACKET
SKILL LEVEL: EASY



PDF PATTERNS

THINGS YOU NEED:

> **A:** Eight ¾" (2cm) buttons. **B,C:** Ten ¾" (2cm) buttons.

SUGGESTED FABRICS:

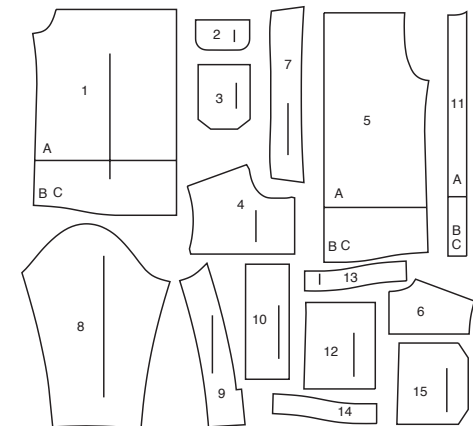
> Denim, Twill, Cotton Blends, Linen. **Interfacing:** Lightweight Fusible.



Your printed tile pieces should be assembled before you move on to this step!

PIECES (15)

- 1 Front-A,B,C
- 2 Flap-A
- 3 Pocket-A
- 4 Yoke Front-A,B,C
- 5 Back-A,B,C
- 6 Yoke Back-A,B,C
- 7 Collar-A,B,C
- 8 Sleeve Front-A,B,C
- 9 Sleeve Back-A,B,C
- 10 Cuff-A,B,C
- 11 Guide For Buttonholes-A,B,C
- 12 Pocket-B
- 13 Front Hem Facing-B,C
- 14 Back Hem Facing-B,C
- 15 Pocket-C



YARDAGE CHART

SIZES	34	36	38	40	42	44	46	48	50	52	
JACKET A											
45"*	2¼	2¾	2¾	2¾	2½	2⅝	2⅝	2⅝	2¾	2¾	yds.
60"*	1⅞	1⅞	2	2	2	2	2	2⅞	2⅞	2¼	"
115cm*	2.1	2.2	2.2	2.2	2.2	2.4	2.4	2.4	2.6	2.6	m.
150cm*	1.8	1.8	1.8	1.9	1.9	1.9	1.9	2.0	2.0	2.1	"
INTERFACING A											
20"	¾	¾	¾	¾	¾	¾	¾	¾	⅞	⅞	yds.
51cm	0.6	0.7	0.7	0.7	0.7	0.7	0.7	0.7	0.7	0.8	m.
JACKET B											
45"*	2⅞	3	3	3	3	3	3¼	3¼	3⅜	3⅜	yds.
60"*	2⅞	2⅞	2⅞	2¼	2¼	2¼	2⅝	2⅝	2¾	2¾	"
115cm*	2.7	2.8	2.8	2.8	2.8	2.8	3.0	3.0	3.0	3.1	m.
150cm*	2.0	2.0	2.0	2.0	2.1	2.1	2.4	2.4	2.4	2.6	"
INTERFACING B,C											
20"	¾	⅞	⅞	⅞	⅞	⅞	1	1	1	1	yds.
51cm	0.7	0.8	0.8	0.8	0.8	0.8	1.0	1.0	1.0	1.0	m.
JACKET C											
45"*	2¾	2¾	2⅞	2⅞	2⅞	3¼	3¼	3¼	3⅜	3⅜	yds.
60"*	2¼	2¼	2¼	2¾	2¾	2¾	2¾	2½	2½	2½	"
115cm*	2.6	2.6	2.7	2.7	2.7	3.0	3.0	3.0	3.1	3.1	m.
150cm*	2.0	2.1	2.1	2.1	2.2	2.2	2.2	2.2	2.3	2.3	"

FINISHED GARMENT MEASUREMENTS

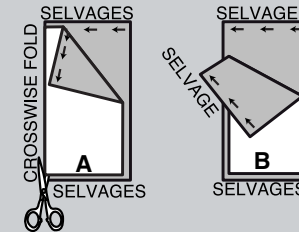
SIZES	34	36	38	40	42	44	46	48	50	52	
A,B,C CHEST	40	42	44	46	48	50	52	54	56	58	ins.
	102	107	112	117	122	127	132	137	142	147	cm.
A,B,C WAIST	38	40	42	44	46	48	50	52	54	56	ins.
	97	102	107	112	117	122	127	132	137	142	cm.
WIDTH, LOWER EDGE											
JACKET A,B,C	39½	41½	43½	45½	47½	49½	51½	53½	55½	57½	ins.
	103	105	110	116	121	126	131	136	141	146	cm.
FINISHED BACK LENGTH FROM BASE OF NECK											
JACKET A	24½	24¾	25	25¼	25½	25¾	26	26¼	26½	26¾	ins.
	62	63	64	64	65	65	66	66	67	68	cm.
JACKET B,C	31¾	32	32¼	32½	32¾	33	33¼	33½	33¾	34	ins.
	79	81	82	83	83	84	84	85	85	86	cm.

BODY MEASUREMENTS

SIZES	34	36	38	40	42	44	46	48	50	52	
CHEST	34	36	38	40	42	44	46	48	50	52	in.
	87	92	97	102	107	112	117	122	127	132	cm.
WAIST	28	30	32	34	36	39	42	44	46	48	in.
	71	76	82	87	92	99	107	112	117	122	cm.
HIP	35	37	39	41	43	45	47	49	51	53	in.
	89	94	99	104	109	115	119	124	128	135	cm.

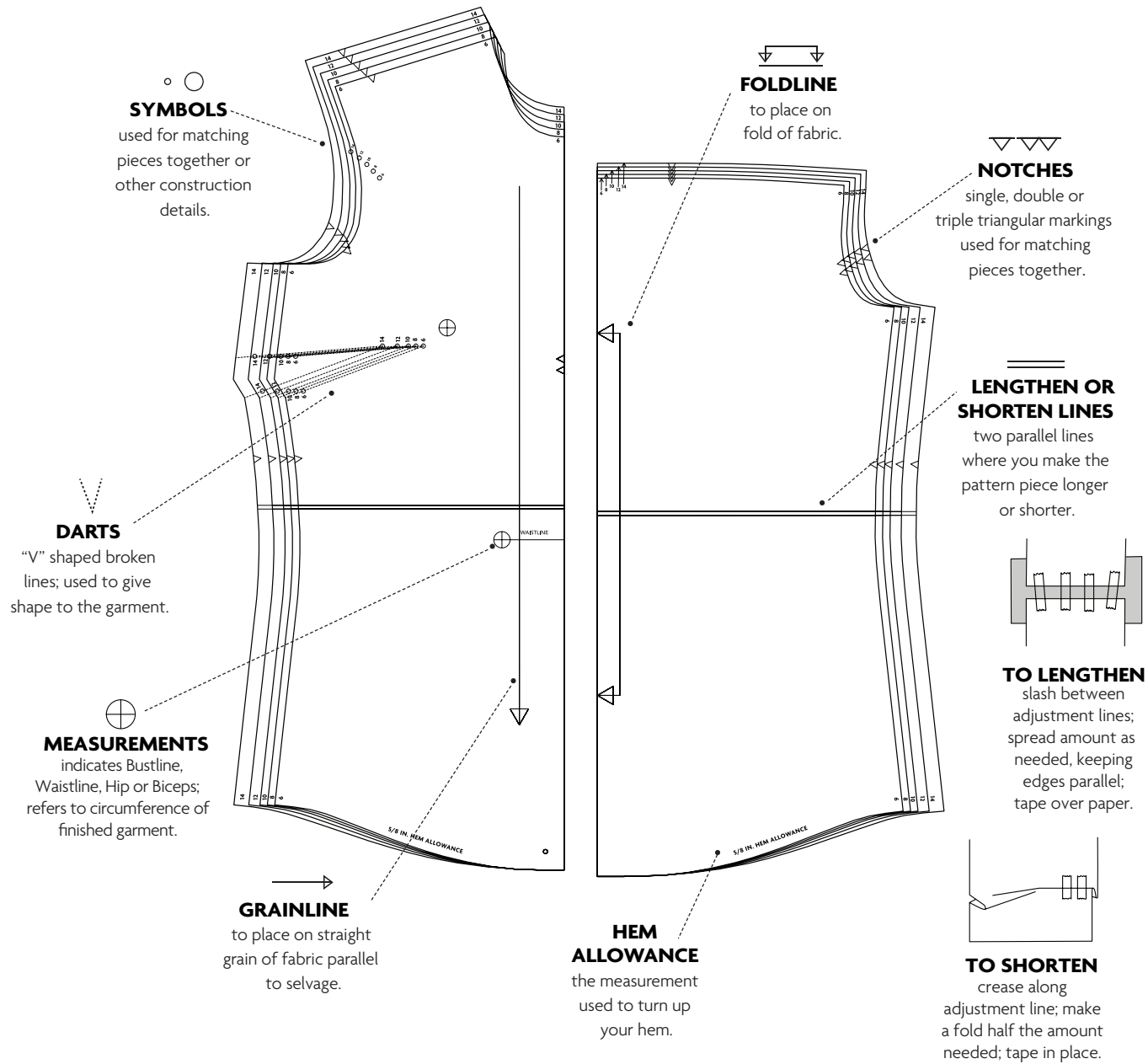
CUTTING AND MARKING

- > **SHRINK FABRIC** if not labeled pre-shrunk. Press.
- > **CIRCLE LAYOUT** for View, Size, Fabric Width.
- > Use **WITH NAP** layout for fabrics with one-way designs, nap, pile or surface shading. Because most knits have surface shading, a with nap layout is used.
- > For **DOUBLE THICKNESS (WITH FOLD)**, fold fabric with right sides together.
- > ***DOUBLE THICKNESS (WITHOUT FOLD)**, for fabrics with nap, fold fabric crosswise, right sides together. Mark as shown. Cut along crosswise fold of fabric (A). Turn upper layer 180° so arrows go in same direction and place over lower layer, right sides together (B).
- > For **SINGLE THICKNESS**, place fabric right side up. (For Fur Pile fabrics, place pile side down.)



- > Before **CUTTING**, place all pieces on fabric according to layout. Pin.
(Layouts show approximate position of pattern pieces; position may vary according to your pattern size.)
- > ★ Cut other pieces first, allowing enough fabric to cut this piece. Open fabric. Cut piece on single layer of fabric with piece face up on right side of fabric.
- > Cut accurately, cutting notches outward.
- > Before removing pattern, **TRANSFER MARKINGS** and lines of construction to **WRONG SIDE** of fabric, using Pin and Chalk Pencil method or Tracing Paper and Dressmaker Wheel. Markings needed on right side of fabric should be thread traced.
NOTE: Broken-line boxes (a! b! c!) in layouts represent pieces cut by measurements provided.
- > Prewash your fabric using a method that's suitable for the fabric type.
- > Fold fabric with right sides together, matching **SELVAGES**.
- > Pin your pattern pieces to the fabric as shown below and cut them out using a sharp pair of dressmaker's shears.

PATTERN MARKINGS

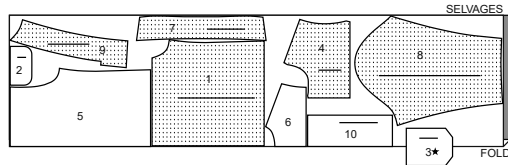


CUTTING LAYOUTS

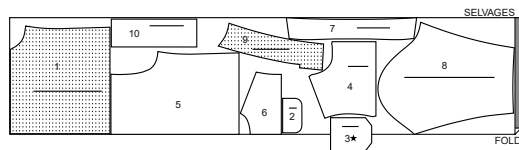
JACKET A

use pieces: 1 2 3 4 5 6 7 8 9 10

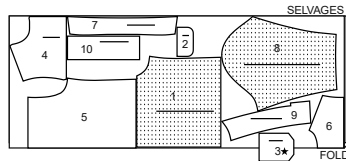
45" (115 cm)
with nap
sizes 34-36-38-40-42



45" (115 cm)
with nap
sizes 44-46-48-50-52



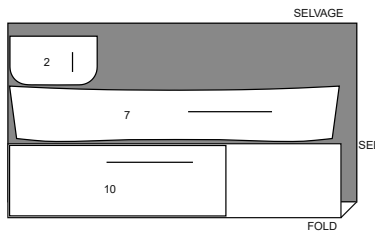
60" (150 cm)
with nap
all sizes



INTERFACING A

use pieces: 2 7 10

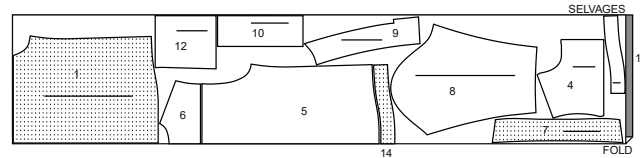
20" (51 cm)
without nap
all sizes



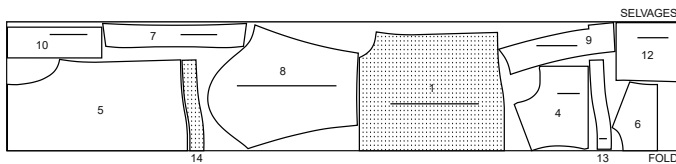
JACKET B

use pieces: 1 4 5 6 7 8 9 10 12 13 14

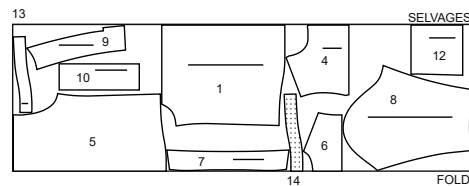
45" (115 cm)
with nap
sizes 34-36-38-40-42-44



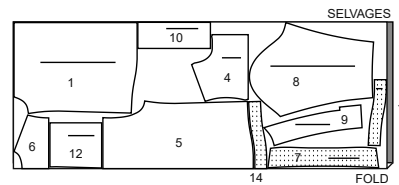
45" (115 cm)
with nap
sizes 46-48-50-52



60" (150 cm)
with nap
sizes 34-36-38-40-42-44



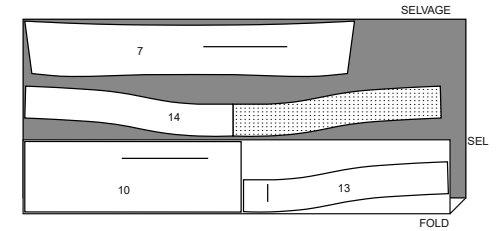
60" (150 cm)
with nap
sizes 46-48-50-52



INTERFACING B,C

use pieces: 7 10 13 14

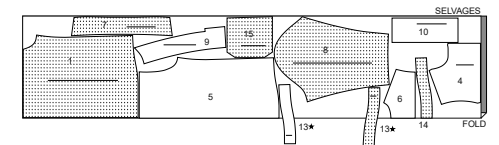
20" (51 cm)
without nap
all sizes



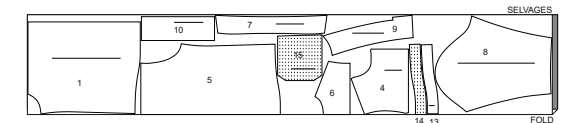
JACKET C

use pieces: 1 4 5 6 7 8 9 10 13 14 15

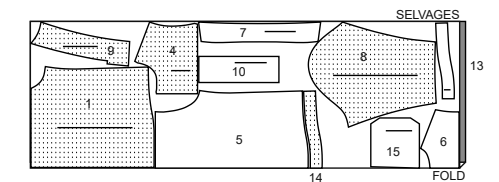
45" (115 cm)
with nap
sizes 34-36-38-40-42-44



45" (115 cm)
with nap
sizes 46-48-50-52



60" (150 cm)
with nap
all sizes



PATTERN PIECES WILL BE IDENTIFIED BY NUMBERS THE FIRST TIME THEY ARE USED.

SEWING INFORMATION

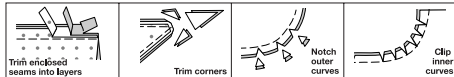
5/8" (1.5cm) SEAM ALLOWANCES ARE INCLUDED,
(unless otherwise indicated)

ILLUSTRATION SHADING KEY

Right Side	Wrong Side	Interfacing	Lining	Underlining

Pin or baste seams, right side together, matching notches. Fit garment before stitching major seams.

Press seam allowances flat; then open unless otherwise stated. Clip where necessary so they lie flat.



GLOSSARY

Sewing terms appearing in **BOLD TYPE** in Sewing Instructions are explained below.

EDGESTITCH - Stitch close to finished edge or seam.

NARROW HEM - Turn in hem; press, easing in fullness if necessary. Open out hem. Turn in again so raw edge is along crease; press. Turn in along crease, stitch.

REINFORCE - Stitch along seamline where indicated in sewing instructions, using small machine stitches.

SLIPSTITCH - Slide needle through a folded edge, then pick up a thread of underneath fabric.

STAYSTITCH - Stitch 1/8" (3mm) from seamline in seam allowance (usually 1/2" (13mm) from raw edge).

TOPSTITCH - On outside, stitch 1/4" (6mm) from edge, seam or previous stitching, using presser foot as guide, or stitch where indicated in instructions.

UNDERSTITCH - Open out facing or underside of garment; stitch to seam allowance close to seam.

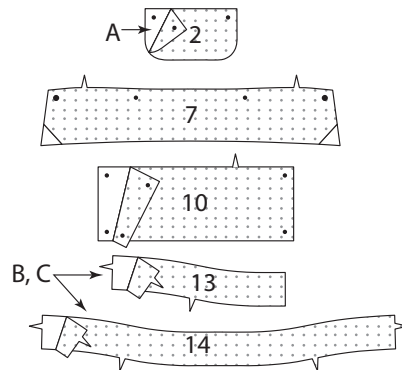
SEWING DIRECTIONS

JACKET A, B, C

NOTE: the first view mentioned will be illustrated, unless otherwise mentioned.

INTERFACING

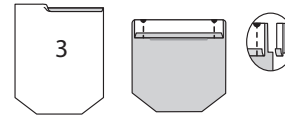
1. Trim corners of INTERFACING, as shown. Fuse INTERFACING to wrong side of each matching FABRIC section, following manufacturer's instructions.



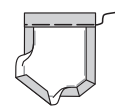
FRONT, BACK, AND YOKES

Pocket A

2. Turn in 1/4" (6mm) on upper edge of POCKET (3). Press. Turn upper edge to outside along foldline. Stitch ends. Trim.



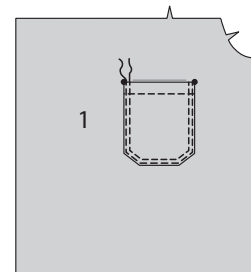
3. Turn upper edge of pocket to inside, turning in remaining seam allowances and diagonally folding corners. Press. Baste close to inner pressed edge.



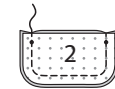
4. **TOPSTITCH** along basting.



5. Pin pocket to left FRONT (1), matching large dots. **EDGESTITCH** and **TOPSTITCH** side and lower edges of pocket.



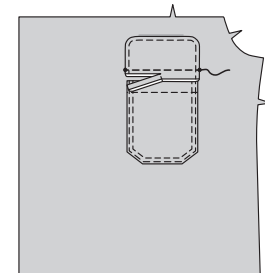
6. Pin FLAP (2) sections, right sides together, matching small dots. Stitch sides and lower edges. Trim.



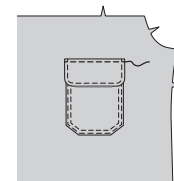
7. Turn. Baste raw edges together. **TOPSTITCH** finished edge.



8. Pin flap to left front, matching small dots, placing seamline along placement line. Stitch between small dots. Trim flap seam allowance to a scant 1/4" (6mm), being careful not to cut front.

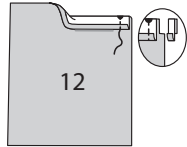


9. Turn flap down, press. **TOPSTITCH** upper edge of flap, encasing trimmed edge.

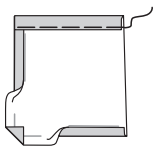


Pocket B

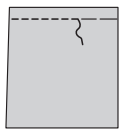
10. Turn in 1/4"(6mm) on upper edge of POCKET (12). Press. Turn upper edge to outside along foldline. Stitch front end with large dot. Trim.



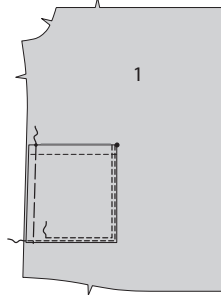
11. Turn upper edge of pocket to inside, turning in remaining seam allowances on front and lower edges, diagonally folding corner. Press. Baste close to inner pressed edge.



12. On outside, **TOPSTITCH** pocket along basting.

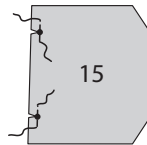


13. Pin pocket to FRONT (1) matching large and small dots. **EDGESTITCH** and **TOPSTITCH** front and lower edges. Baste side edge.



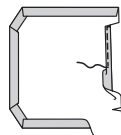
Pocket C

14. REINFORCE side edge of POCKET (15) through large dots. Clip to large dots.

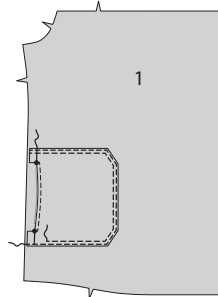


15. Make a 5/8"(1.5cm) **NARROW HEM** on side edge of pocket between large dots, squaring stitching at ends.

Turn in 5/8"(1.5cm) seam allowance on upper, front, and lower edges of pocket, folding in fullness at corners. Press.

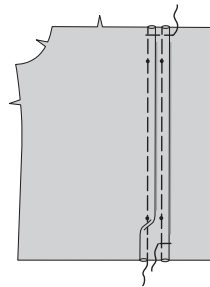


16. Pin pocket to FRONT (1), matching large dots, having raw edges even. **EDGESTITCH** and **TOPSTITCH** upper, front, and lower edges of pocket. Baste side edges together, keeping hemmed edge free.

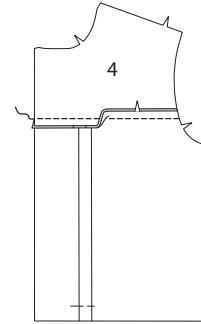


Views A, B, C

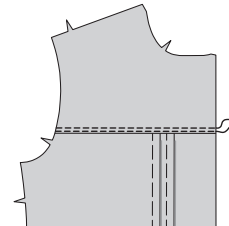
17. To make tucks in front, on outside, crease along the foldlines between side and center front, matching small dots, press. Baste, as shown. Turn tucks toward front. Press.



18. With right sides together, stitch YOKE FRONT (4) to front, matching notches. Press seam toward yoke.

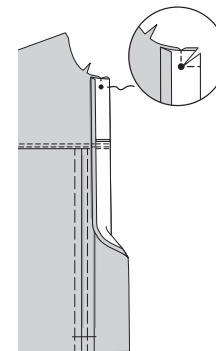


19. EDGESTITCH and **TOPSTITCH** yoke.

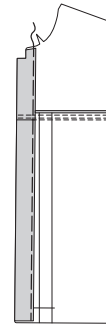


20. Turn in 3/8"(1cm) on front edge of jacket, press.

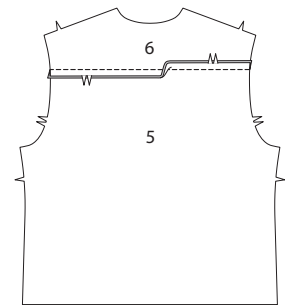
With right sides together, fold upper edge of yoke front along foldline, matching large dots. Stitch from front edge to large dot; pivot at large dot and stitch across seam allowance. Clip diagonally to large dot.



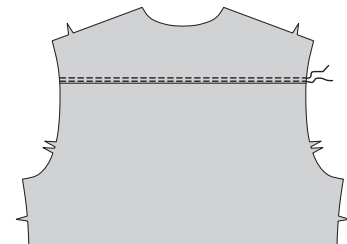
21. Turn corner right side out, turning front edge of jacket to inside along foldline, press. Baste inner edge in place.



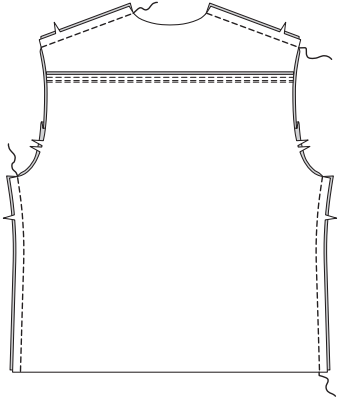
22. With right sides together, stitch YOKE BACK (6) to BACK (5), matching center back and notches. Press seam toward yoke.



23. EDGESTITCH and **TOPSTITCH** yoke back at seam.

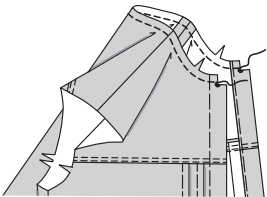


24. Stitch front and back together at shoulders and sides.

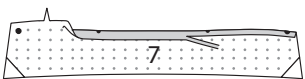


COLLAR

25. STAYSTITCH neck edge of jacket.



26. Turn in seam allowance on notched edge of interfaced COLLAR (7) section, easing in fullness. Press. Trim pressed seam allowance to 3/8"(1cm).



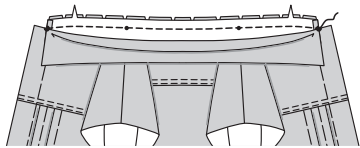
27. Stitch collar sections together, leaving notched edge open. Trim.



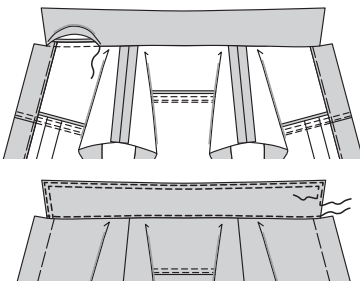
28. Turn. Press.



29. Pin collar to neck edge, clipping jacket neck edge where necessary. Stitch, keeping pressed edge free. Trim. Press seam toward collar.

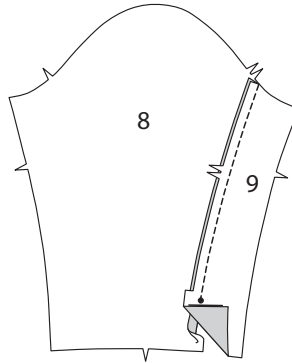


30. SLIPSTITCH pressed edge over seam. **EDGESTITCH** and **TOPSTITCH** outer edge of collar. **EDGESTITCH** collar close to neck seam.

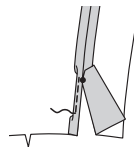


SLEEVE

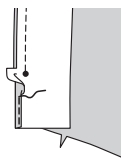
31. Pin SLEEVE FRONT (8) and SLEEVE BACK (9) together at back edge. Stitch, leaving open below large dot.



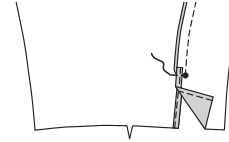
32. Make a 5/8"(1.5cm) **NARROW HEM** on sleeve front, tapering to nothing above large dot, as shown.



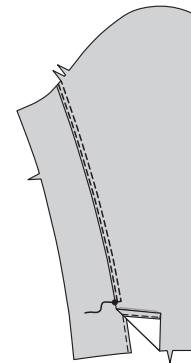
33. Make a 5/8"(1.5cm) **NARROW HEM** on sleeve back extension.



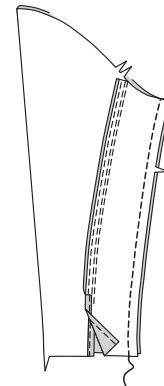
34. Turn seam and extension toward sleeve front. Baste upper edge of extension in place.



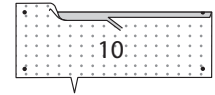
35. On outside, **EDGESTITCH** sleeve front along seam to large dot. **TOPSTITCH** sleeve front along seam, pivoting to large dot.



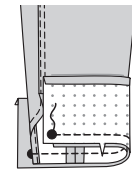
36. Stitch remaining sleeve seam.



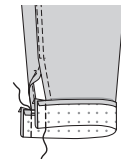
37. Turn in seam allowance on un-notched edge of CUFF (10). Press. Trim pressed seam allowance to 3/8"(1cm).



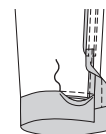
38. Pin cuff to sleeve, matching notches, and small dots. Stitch. Trim. Press seam toward cuff.



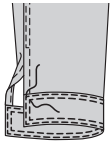
39. With right sides together, fold cuff along foldline. Stitch ends. Trim.



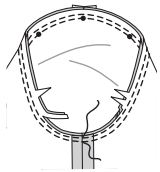
40. Turn. Press. **SLIPSTITCH** pressed edge of cuff over seam.



41. On outside, **EDGESTITCH** and **TOPSTITCH** all edges of cuff.



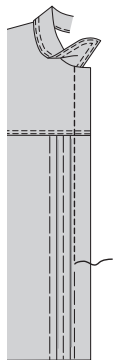
42. With right sides together, pin sleeve into armhole matching notches, placing center small dot at shoulder seam. Baste. Stitch. Stitch again 1/4"(6mm) away in seam allowance. Trim close to stitching. Press seam allowances flat. Turn seam toward sleeve.



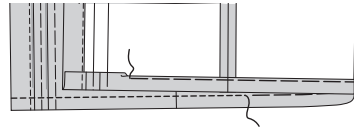
FINISHING

View A

43. Stitch front edge, using basting as a guide, keeping fold of tuck free.

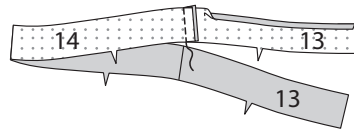


44. Turn up a 1-1/4"(3.2cm) on lower edge of jacket. Turn in 1/4"(6mm) on raw edge. Baste. Stitch.

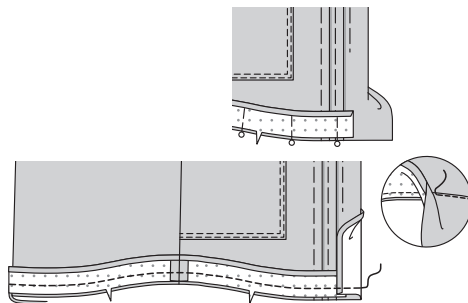


Views B, C

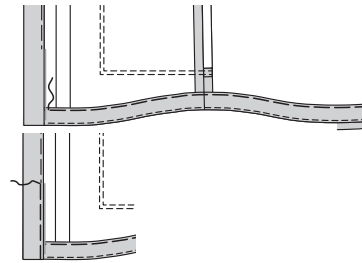
45. Stitch **FRONT HEM FACING** (13) and **BACK HEM FACING** (14) together at sides. Turn in 1/4"(6mm) on upper edge of facing. Press.



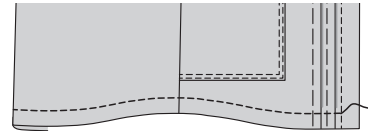
46. Remove basting from front for 6"(15cm) above lower edge. Open out front at lower edge. Pin hem facing to lower edge of front, matching notches, centers, and seams. Turn front edge to outside along foldline, over hem facing. Pin. Stitch lower edge. Trim. **UNDERSTITCH** facing as far as possible.



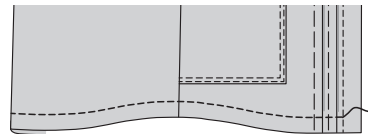
47. Turn front edge and hem facing to inside. Press. Baste upper edge of facing in place. Baste remaining edge of front in place again.



48. On outside, stitch front edge, using basting as a guide, keeping fold of tuck free.



49. On outside, stitch hem facing in place using basting as a guide.



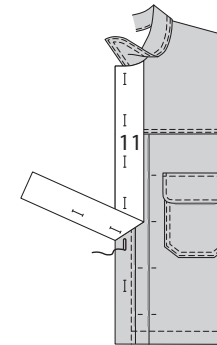
Views A, B, C

50. Press tucks toward center. Stitch across each tuck at horizontal stitching lines. Remove tuck basting.



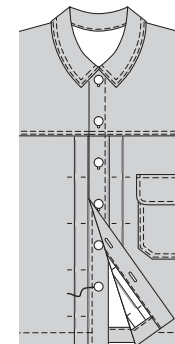
51. Place **GUIDE FOR BUTTONHOLES** (11) on left front, matching centers, having edge of tissue even with finished edge of jacket. Transfer markings.

Make buttonholes at markings.

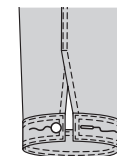


52. Lap left front over right, matching centers. Using buttonholes as guides, make button markings on right front.

Sew buttons at markings.



53. Make a buttonhole in cuff at marking. Sew button to cuff at marking.





Congrats!


You've completed your sewing adventure!

**SHARE
YOUR** look!



Post your pattern and tag us at
@MCCALLPATTERNCOMPANY and use #mccallpatterns
for a chance to be featured on our social media!

Look for more McCall's PDF patterns at **McCallPattern.com**

 1-800-255-2762

© 2022 IG Design Group Americas, Inc. | All Rights Reserved.
Sold for individual home use only and not for commercial or manufacturing purposes.