

McCall's[®] by design_{group} M8342



>> MISSES' SHIRTDRESS
SKILL LEVEL: AVERAGE

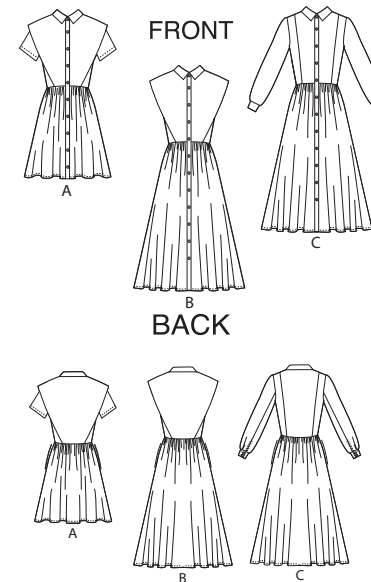


THINGS YOU NEED:

- > **A,B,C:** 5/8" (1.5cm) buttons: Ten for **A**, Twelve for **B**, Sixteen for **C**.
- Also for B:** One pkg. of 1/2" (1.3cm) wide single fold bias tape.

SUGGESTED FABRICS:

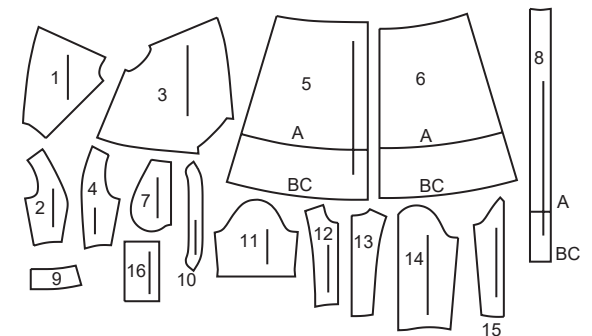
- > Poplin, Cotton Blends, Linen, Lawn. **Interfacing:** Lightweight Fusible.



Your printed tile pieces should be assembled before you move on to this step!

PIECES (16)

- 1 OUTER BODICE FRONT A, B
- 2 BODICE SIDE FRONT A, B, C
- 3 OUTER BODICE BACK A, B
- 4 BODICE SIDE BACK A, B, C
- 5 SKIRT FRONT A, B, C
- 6 SKIRT BACK A, B, C
- 7 POCKET A, B, C
- 8 FRONT BAND A, B, C
- 9 COLLAR A, B, C
- 10 COLLAR BAND A, B, C
- 11 SLEEVE A
- 12 BODICE FRONT A, B, C
- 13 BODICE BACK A, B, C
- 14 SLEEVE FRONT C
- 15 SLEEVE BACK C
- 16 CUFF C



YARDAGE CHARTS

SIZES	8	10	12	14	16	18	20	22	24	26	
INTERFACING A,B,C											
20"	1 $\frac{3}{8}$	1 $\frac{3}{8}$	1 $\frac{3}{8}$	1 $\frac{3}{8}$	1 $\frac{3}{8}$	1 $\frac{1}{2}$	1 $\frac{1}{2}$	1 $\frac{1}{2}$	1 $\frac{1}{2}$	1 $\frac{1}{2}$	yds.
51cm	1.3	1.3	1.3	1.3	1.3	1.3	1.3	1.4	1.4	1.4	m.
DRESS A											
60"*	3	3 $\frac{3}{8}$	3 $\frac{3}{8}$	3 $\frac{3}{8}$	3 $\frac{5}{8}$	3 $\frac{5}{8}$	3 $\frac{5}{8}$	3 $\frac{3}{4}$	3 $\frac{3}{4}$	3 $\frac{7}{8}$	yds.
150cm*	2.8	2.9	2.9	2.9	3.2	3.4	3.4	3.5	3.5	3.5	m.
DRESS B											
60"*	3 $\frac{1}{4}$	3 $\frac{3}{8}$	3 $\frac{3}{8}$	3 $\frac{3}{4}$	3 $\frac{7}{8}$	3 $\frac{7}{8}$	3 $\frac{7}{8}$	4	4	4 $\frac{1}{8}$	yds.
150cm*	3.0	3.1	3.1	3.5	3.6	3.6	3.6	3.7	3.7	3.7	m.
DRESS C											
60"*	3	3	3 $\frac{1}{8}$	3 $\frac{5}{8}$	3 $\frac{3}{4}$	3 $\frac{3}{4}$	3 $\frac{3}{4}$	3 $\frac{3}{4}$	3 $\frac{3}{4}$	3 $\frac{7}{8}$	yds.
150cm*	2.8	2.8	2.9	3.4	3.5	3.5	3.5	3.5	3.5	3.5	m.

FINISHED GARMENT MEASUREMENTS

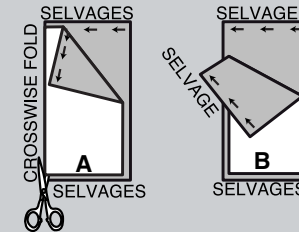
SIZES	8	10	12	14	16	18	20	22	24	26	
A,B,C BUST											
	37	38	39 $\frac{1}{2}$	41 $\frac{1}{2}$	43 $\frac{1}{2}$	45 $\frac{1}{2}$	47 $\frac{1}{2}$	49 $\frac{1}{2}$	51 $\frac{1}{2}$	53 $\frac{1}{2}$	ins.
	94	97	100	105	110	116	121	126	131	136	cm.
WIDTH, LOWER EDGE											
DRESS A											
	86 $\frac{1}{2}$	87 $\frac{1}{2}$	89	91	93	95	97	99	101	103	ins.
	220	222	226	231	236	242	246	251	257	262	cm.
DRESS B,C											
	97	98	99 $\frac{1}{2}$	101	103	105	107	109	111	113	ins.
	246	249	253	257	262	267	272	277	282	287	cm.
FINISHED BACK LENGTH FROM BASE OF NECK											
DRESS A											
	36 $\frac{3}{4}$	37	37 $\frac{1}{4}$	37 $\frac{1}{2}$	37 $\frac{3}{4}$	38	38 $\frac{1}{4}$	38 $\frac{1}{2}$	38 $\frac{3}{4}$	39	ins.
150cm*	93	94	95	95	96	97	97	98	98	99	cm.
DRESS B,C											
	45 $\frac{3}{4}$	46	46 $\frac{1}{4}$	46 $\frac{1}{2}$	46 $\frac{3}{4}$	47	47 $\frac{1}{4}$	47 $\frac{1}{2}$	47 $\frac{3}{4}$	48	ins.
150cm*	116	117	117	118	119	119	120	121	121	122	cm.

BODY MEASUREMENTS

SIZES	8	10	12	14	16	18	20	22	24	26	
BUST	31½	32½	34	36	38	40	42	44	46	48	in.
	80	83	87	92	97	102	107	112	117	122	cm.
WAIST	24	25	26½	28	30	32	34	37	39	41	in.
	61	64	67	71	76	81	87	94	99	104	cm.
HIP	33½	34½	36	38	40	42	44	46	48	50	in.
	85	88	92	97	102	107	112	117	122	127	cm.
BACK WAIST LENGTH	15¾	16	16¼	16½	16¾	17	17¼	17½	17¾	18	in.
	40	40.5	41.5	42	42.5	43	44	44.5	45	46	cm.

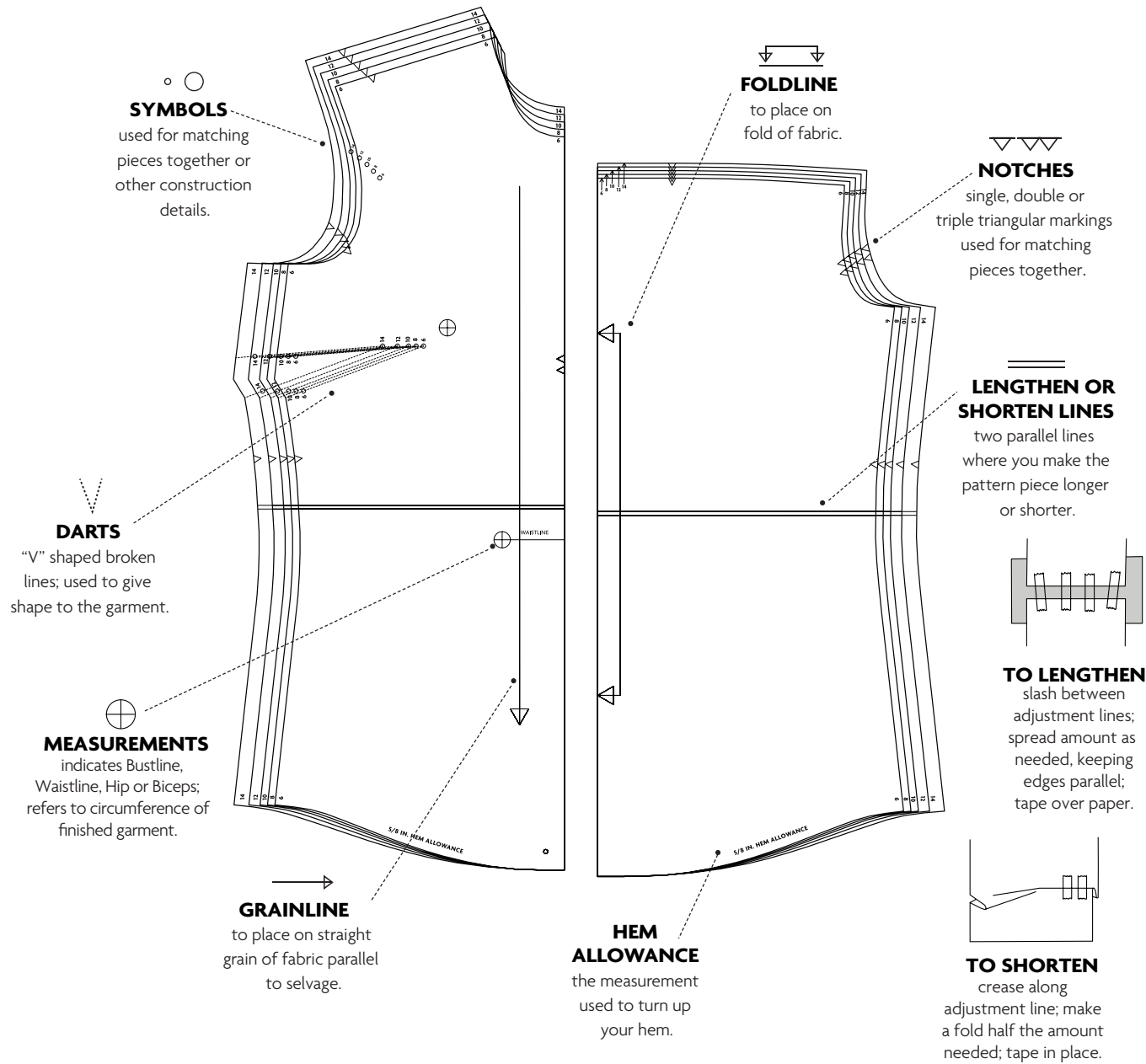
CUTTING AND MARKING

- > **SHRINK FABRIC** if not labeled pre-shrunk. Press.
- > **CIRCLE LAYOUT** for View, Size, Fabric Width.
- > Use **WITH NAP** layout for fabrics with one-way designs, nap, pile or surface shading. Because most knits have surface shading, a with nap layout is used.
- > For **DOUBLE THICKNESS (WITH FOLD)**, fold fabric with right sides together.
- > ***DOUBLE THICKNESS (WITHOUT FOLD)**, for fabrics with nap, fold fabric crosswise, right sides together. Mark as shown. Cut along crosswise fold of fabric (A). Turn upper layer 180° so arrows go in same direction and place over lower layer, right sides together (B).
- > For **SINGLE THICKNESS**, place fabric right side up. (For Fur Pile fabrics, place pile side down.)



- > Before **CUTTING**, place all pieces on fabric according to layout. Pin.
(Layouts show approximate position of pattern pieces; position may vary according to your pattern size.)
 - > ★ Cut other pieces first, allowing enough fabric to cut this piece. Open fabric. Cut piece on single layer of fabric with piece face up on right side of fabric.
 - > Cut accurately, cutting notches outward.
 - > Before removing pattern, **TRANSFER MARKINGS** and lines of construction to **WRONG SIDE** of fabric, using Pin and Chalk Pencil method or Tracing Paper and Dressmaker Wheel. Markings needed on right side of fabric should be thread traced.
- NOTE:** Broken-line boxes (a! b! c!) in layouts represent pieces cut by measurements provided.
- > Prewash your fabric using a method that's suitable for the fabric type.
 - > Fold fabric with right sides together, matching **SELVAGES**.
 - > Pin your pattern pieces to the fabric as shown below and cut them out using a sharp pair of dressmaker's shears.

PATTERN MARKINGS

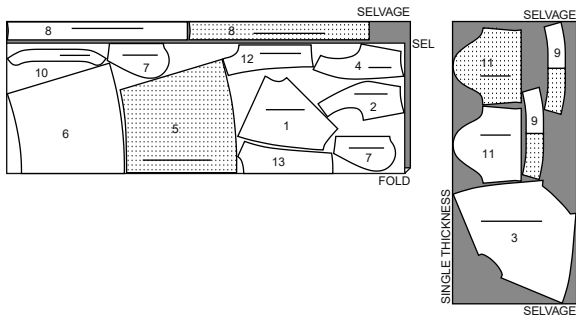


CUTTING LAYOUTS

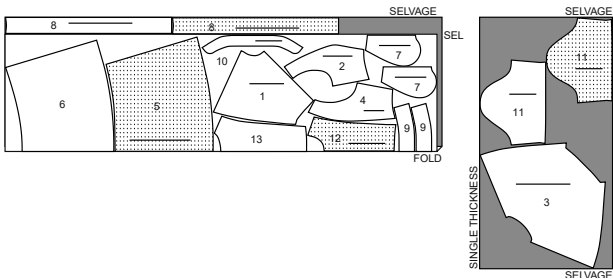
DRESS A

use pieces: 1 2 3 4 5 6 7 8 9 10 11 12 13

60" (150 cm)
with nap
sizes 8-10-12-14



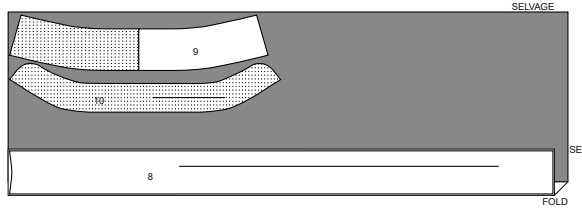
60" (150 cm)
with nap
sizes 16-18-20-22-24-26



INTERFACING A,B

use pieces: 8 9 10

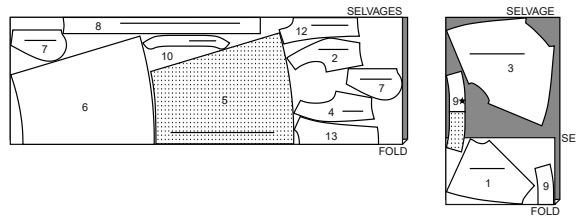
20" (51 cm)
without nap
all sizes



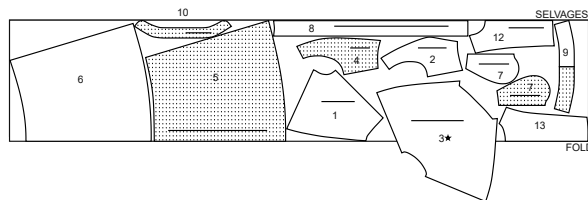
DRESS B

use pieces: 1 2 3 4 5 6 7 8 9 10 12 13

60" (150 cm)
with nap
sizes 8-10-12



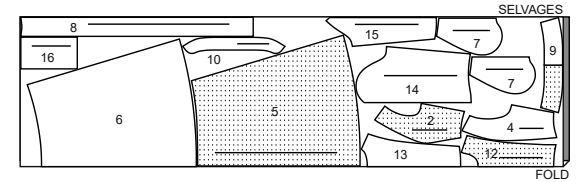
60" (150 cm)
with nap
sizes 14-16-18-20-22-24-26



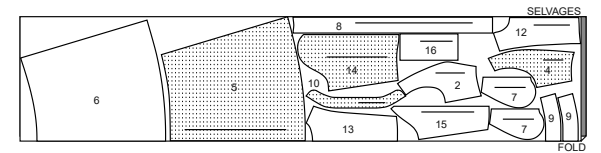
DRESS C

use pieces: 2 4 5 6 7 8 9 10 12 13 14 15 16

60" (150 cm)
with nap
sizes 8-10-12



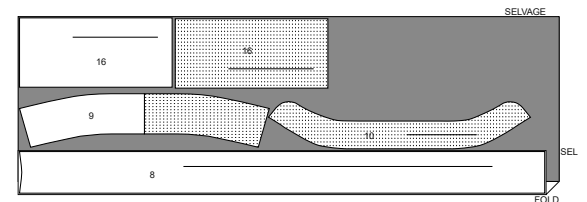
60" (150 cm)
with nap
sizes 14-16-18-20-22-24-26



INTERFACING C

use pieces: 8 9 10 16

20" (51 cm)
without nap
all sizes



PATTERN PIECES WILL BE IDENTIFIED BY NUMBERS THE FIRST TIME THEY ARE USED.

SEWING INFORMATION

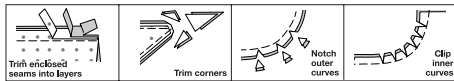
5/8" (1.5cm) SEAM ALLOWANCES ARE INCLUDED,
(unless otherwise indicated)

ILLUSTRATION SHADING KEY

Right Side	Wrong Side	Interfacing	Lining	Underlining

Pin or baste seams, right side together, matching notches. Fit garment before stitching major seams.

Press seam allowances flat; then open unless otherwise stated. Clip where necessary so they lie flat.



GLOSSARY

Sewing terms appearing in **BOLD TYPE** in Sewing Instructions are explained below.

EASESTITCH - Stitch along seamline, using long machine stitches. Pull thread ends when adjusting to fit.

NOTE: For sleeve caps, make a second row of long machine stitches 1/4" (6mm) away in seam allowance. for more control.

EDGESTITCH - Stitch close to finished edge or seam.

OPTIONAL FOR HEMS: Apply Seam Binding.

GATHER - Stitch along seamline and again 1/4" (6mm) away in seam allowance, using long machine stitches. Pull thread ends when adjusting to fit.

NARROW HEM - Turn in hem; press, easing in fullness if necessary. Open out hem. Turn in again so raw edge is along crease; press. Turn in along crease; stitch.

SLIPSTITCH - Slide needle through a folded edge, then pick up a thread of underneath fabric.

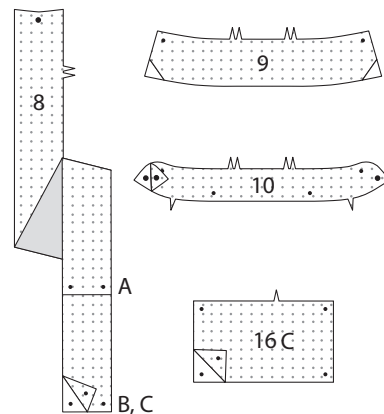
STAYSTITCH - Stitch 1/8" (3mm) from seamline in seam allowance (usually 1/2" (1.3cm) from raw edge).

UNDERSTITCH - Open out facing or underside of garment; stitch to seam allowance close to seam.

SEWING DIRECTIONS

DRESS A, B, C

1. Trim corners of INTERFACING, as shown. Fuse interfacing to wrong side of each matching FABRIC section, following manufacturer's instructions.



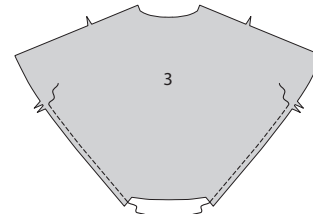
BODICE

Views A, B

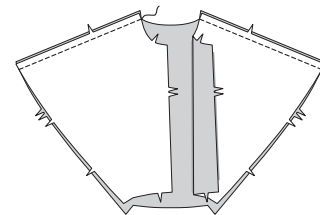
2. **STAYSTITCH** side edge of OUTER BODICE FRONT (1) between notches.



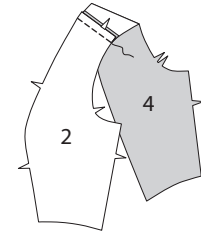
3. **STAYSTITCH** side edges of OUTER BODICE BACK (3) below notches.



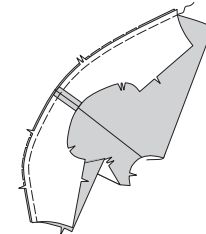
4. Stitch outer bodice back to outer bodice fronts at shoulders, matching notches and foldlines.



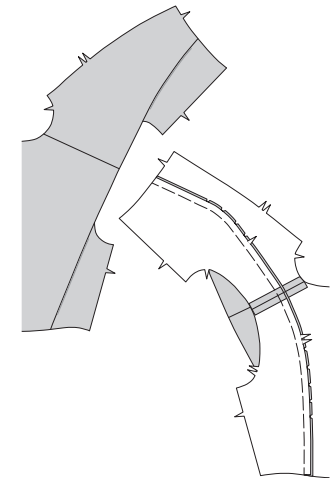
5. Stitch BODICE SIDE FRONT (2) to BODICE SIDE BACK (4) at shoulders, matching notches.



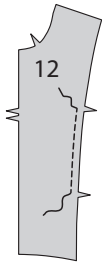
6. Pin bodice side front and back to outer bodice front and back, matching notches and seams, clipping outer bodice front and back where necessary. Baste.



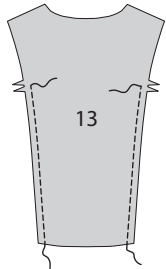
7. Fold outer bodice front and back along foldlines, wrong sides together (over bodice side front and back), having seams toward front. Press.



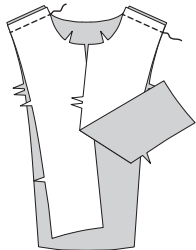
8. STAYSTITCH side edge of BODICE FRONT (12) between notches.



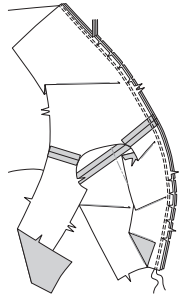
9. STAYSTITCH side edges of BODICE BACK (13) below notches.



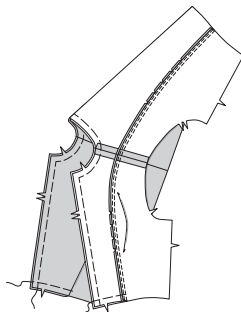
10. Stitch bodice front to bodice back at shoulders.



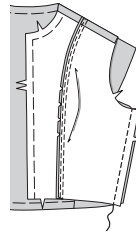
11. Open out bodice side front and back. With right sides together, pin bodice front and back to bodice side front and back, sandwiching outer bodice front and back sections, matching notches and seams, clipping bodice front and back where necessary. Stitch through all layers. Stitch again 1/4" (6mm) away in seam allowances. Trim close to second stitching. Press seam allowances flat. Turn seams toward front.



12. Fold outer bodice front and back again along foldlines; press. Baste front, neck and lower edges together, matching notches.

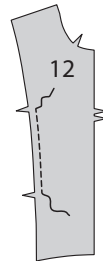


13. Stitch bodice side front to bodice side back at sides.

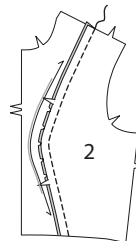


View C

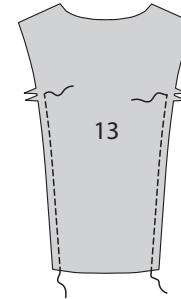
14. STAYSTITCH side front edge of BODICE FRONT (12) between notches.



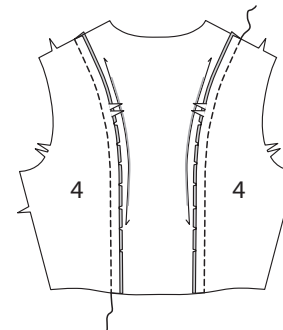
15. Pin BODICE SIDE FRONT (2) to bodice front, clipping bodice front where necessary. Stitch. Press seams toward center front.



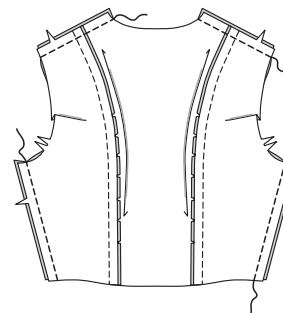
16. STAYSTITCH side back edges of BODICE BACK (13) below notches.



17. Pin BODICE SIDE BACK (4) sections to bodice back, clipping bodice back where necessary. Stitch. Press seams toward center back.

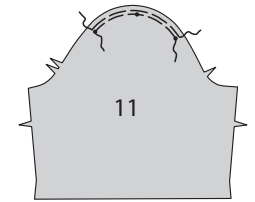


18. Stitch bodice back to bodice front at shoulders and sides.

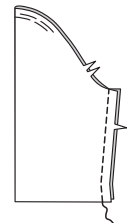


SLEEVE A

19. EASESTITCH cap of SLEEVE (11) between outer dots.

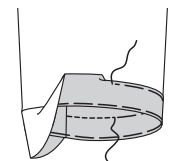


20. Stitch sleeve seam.

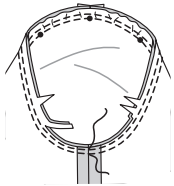


21. Turn up a 1-1/4" (3.2cm) hem on lower edge of sleeve. Baste close to fold. Turn under 1/4" (6mm) on raw edge. Baste hem in place close to upper edge. Press.

Stitch hem along upper basting.

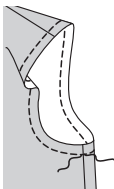


22. Keeping outer bodice front and back free, pin sleeve into armhole edge, RIGHT sides together, matching notches, underarm seams, outer dots and center dot to shoulder seam. Adjust ease. Baste. Stitch. Stitch again 1/4" (6mm) away in seam allowances. Trim close to second stitching. Press seam allowances flat. Turn seam allowances toward sleeve.

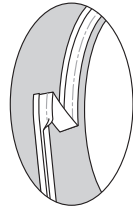


ARMHOLE FINISH B

23. STAYSTITCH armhole edge.



24. Open out one folded edge of bias tape; press out crease and preshape tape to match curve of armhole by pressing lightly.

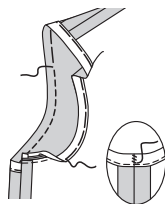


25. Keeping outer bodice front and back free, pin bias tape to armhole edge, placing crease along seamline, turning under ends to meet at side seam, as shown. Stitch along crease. Trim bodice seam allowance even with bias tape.



26. Turn bias tape to inside along seam. Press. Baste in place. **SLIPSTITCH** ends.

On outside, stitch close to basted edge.

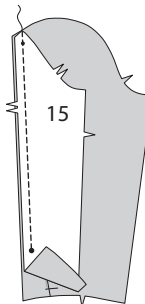


SLEEVE C

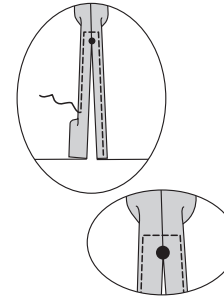
27. To make pleat at lower edge of SLEEVE FRONT (14), on outside, crease along line of small dots. Bring crease to line of large dots; baste. Baste across lower edge.



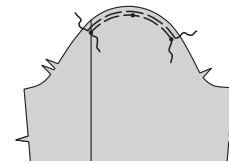
28. Pin SLEEVE BACK (15) to sleeve front at back edge, RIGHT sides together, matching notches and dots. Stitch, leaving free below large dot.



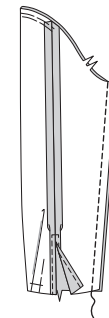
29. Finish opening edges below large dot with a 5/8" (1.5cm) **NARROW HEM**, squaring stitching above large dot.



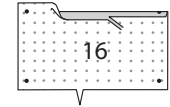
30. EASESTITCH cap of sleeve between between outer dots.



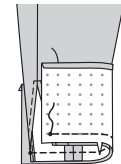
31. Stitch remaining sleeve seam.



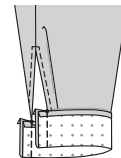
32. Press under 5/8" (1.5cm) on long unnotched edge of CUFF (16). Trim pressed-under edge to 3/8" (1cm).



33. Pin cuff to sleeve, matching notches and small dots to opening edges. Stitch. Trim seam; press toward cuff.

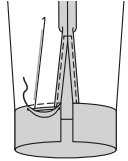


34. With right sides together, fold cuff along foldline. Stitch ends; trim seams.

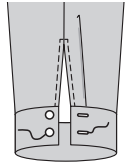


SKIRT

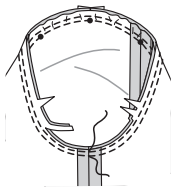
35. Turn cuff right side out; press. **SLIPSTITCH** pressed edge over seam.



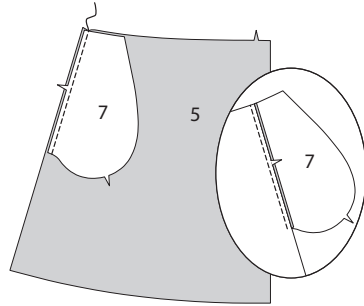
36. Make buttonholes in cuffs at markings. Sew buttons to cuffs at markings.



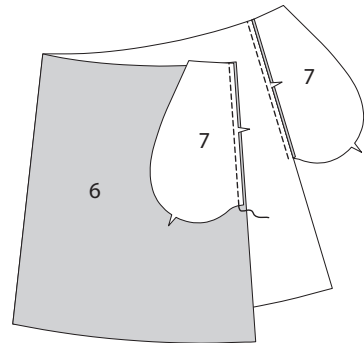
37. With **RIGHT** sides together, pin sleeve into armhole edge, matching notches, underarm seams, outer dots and center dot to shoulder seam. Adjust ease. Baste. Stitch. Stitch again 1/4" (6mm) away in seam allowances. Trim close to second stitching. Press seam allowances flat. Turn seam allowances toward sleeve.



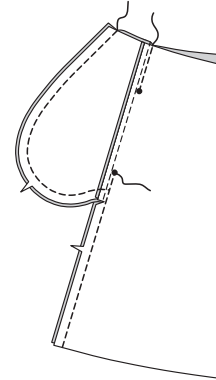
38. Stitch one **POCKET (7)** section to **SKIRT FRONT (5)** at each side, matching notches and taking up a 3/8" (1cm) seam allowance. Press seams toward pockets.



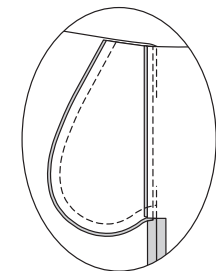
39. Stitch one **POCKET (7)** section to **SKIRT BACK (6)** at each side, matching notches and taking up a 3/8" (1cm) seam allowance. Press seams toward pockets.



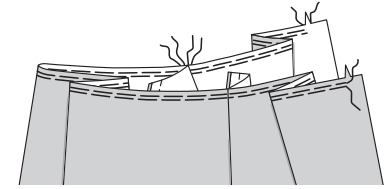
40. Pin back to front at sides, right sides together, matching notches and large dots. Stitch, leaving free between large dots. Stitch pocket edges together to side seams. Clip back seam allowances below pockets.



41. Turn pockets toward front along seamlines; press.

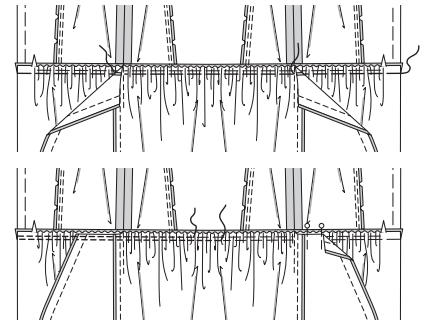


42. GATHER upper edge of skirt between notches, keeping pockets free.



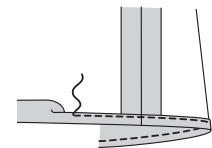
43. Pin skirt to bodice, right sides together, matching notches, centers and side seams, keeping pockets free. Adjust gathers. Baste, breaking stitching at side seams.

Pin pockets in place over gathers. Baste. Stitch. Stitch again 1/4" (6mm) away. Trim close to second stitching. Turn seams toward bodice.



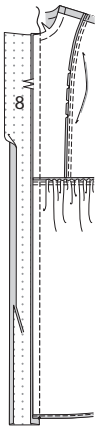
HEM AND FRONT BAND

44. Finish lower edge of dress with a 5/8" (1.5cm) **NARROW HEM**, easing where necessary.

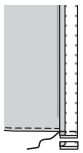


45. Press under 5/8" (1.5cm) on long unnotched edge of FRONT BAND (8). Trim pressed edge to 3/8" (1cm).

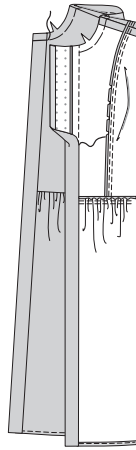
Pin band to dress, matching notches and small dots. Stitch. Trim seam; press toward front band.



46. With right sides together, fold lower edge of band along foldline. Stitch lower edge; trim seam.

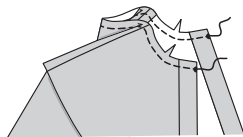


47. Turn band to inside along foldline; press. **SLIPSTITCH** pressed edge over seam. Baste neck edge.

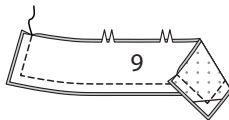


COLLAR AND COLLAR BAND

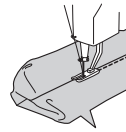
48. **STAYSTITCH** neck edge of dress between large dots.



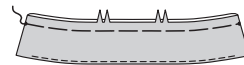
49. Stitch COLLAR (9) sections together, leaving notched edge open. Trim seam.



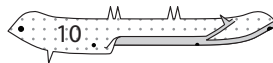
50. **UNDERSTITCH** interfaced side of collar as far as possible.



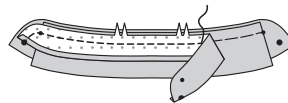
51. Turn right side out; press. Baste raw edges together.



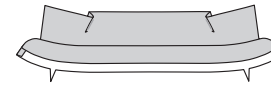
52. Turn in seam allowance on single notched edge of interfaced COLLAR BAND (10) section. Press, easing in fullness. Trim pressed seam allowance to 3/8" (1cm).



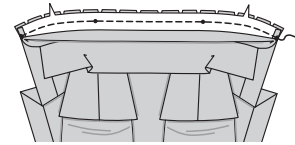
53. Pin interfaced side of collar to uninterfaced collar band, matching notches and small dots. Pin interfaced collar band over collar; baste. Stitch, leaving neck edge open; trim seam.



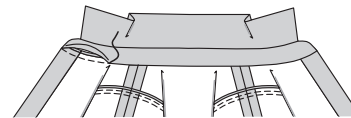
54. Turn right side out; press.



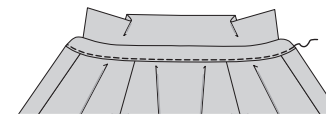
55. Pin collar band to neck edge, matching notches, centers, large dots and small dots to shoulder seams, clipping dress neck edge where necessary. Stitch, keeping pressed edge free. Trim seam; press toward collar band.



56. **SLIPSTITCH** pressed edge over seam.

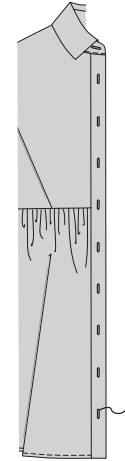


57. **EDGESTITCH** lower edge of collar band, as shown.

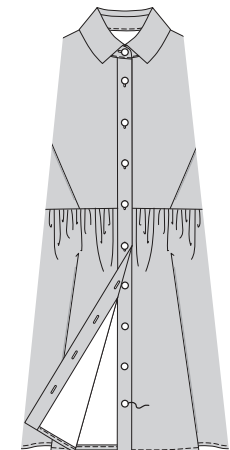


BUTTONHOLES AND BUTTONS

58. Make buttonholes in right front band and neck band at markings.



59. Lap right front over left, matching centers. Using buttonholes as guide, make button markings on left front band and neck band. Sew buttons at markings.





Congrats!


You've completed your sewing adventure!

**SHARE
YOUR** look!



Post your pattern and tag us at
@MCCALLPATTERNCOMPANY and use #mccallpatterns
for a chance to be featured on our social media!

Look for more McCall's PDF patterns at **McCallPattern.com**

 1-800-255-2762

© 2022 IG Design Group Americas, Inc. | All Rights Reserved
Sold for individual home use only and not for commercial or manufacturing purposes.