

McCall's[®] | by design_{group} M8314



>> MISSES' ROMPER, JUMPSUITS
AND SASH
SKILL LEVEL: EASY

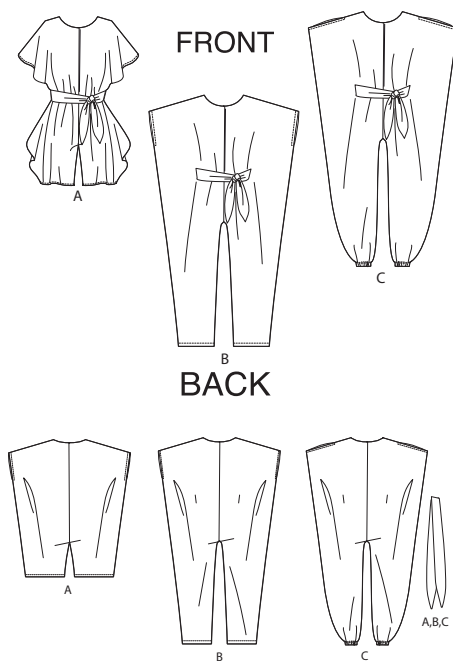


THINGS YOU NEED:

> **A,B,C:** Ten Hooks and Eyes. **Also for C:** 1½ yds. (1.1m) of 1" (2.5cm) wide elastic.

SUGGESTED FABRICS:

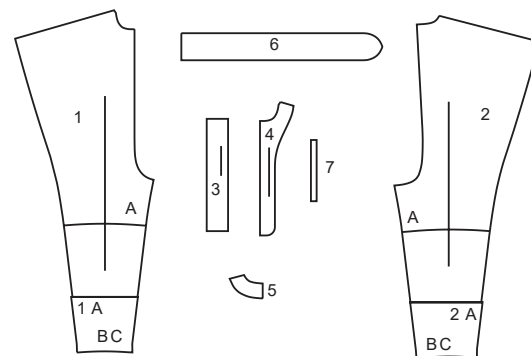
> Crepes, Stable Knits, Challis, Gauze. **Interfacing:** Lightweight Fusible.



Your printed tile pieces should be assembled before you move on to this step!

PIECES (7)

- 1 FRONT A,B,C
- 1 FRONT EXTENSION 1A
- 2 BACK A,B,C
- 2 BACK EXTENSION 2A
- 3 EXTENSION A,B,C
- 4 FRONT FACING A,B,C
- 5 BACK NECK FACING A,B,C
- 6 SASH A,B,C
- 7 GUIDE FOR ELASTIC C



YARDAGE CHARTS

SIZES	XS	S	M	L	XL	XXL	
	(4-6)	(8-10)	(12-14)	(16-18)	(20-22)	(24-26)	
ROMPER AND SASH A							
45, 60"*	4	4 $\frac{1}{8}$	4 $\frac{3}{8}$	4 $\frac{3}{4}$	4 $\frac{7}{8}$	5	yds.
115, 150cm*	3.7	3.8	4.0	4.4	4.5	4.6	m.
JUMPSUIT AND SASH B,C							
45"*	5 $\frac{5}{8}$	5 $\frac{3}{4}$	6 $\frac{1}{2}$	6 $\frac{3}{4}$	6 $\frac{7}{8}$	7	yds.
60"*	4	4 $\frac{1}{8}$	4 $\frac{3}{8}$	4 $\frac{1}{2}$	4 $\frac{3}{4}$	5	"
115cm*	5.2	5.3	6.0	6.2	6.3	6.4	m.
150cm*	3.7	3.8	4.0	4.2	4.4	4.6	"

FINISHED GARMENT MEASUREMENTS

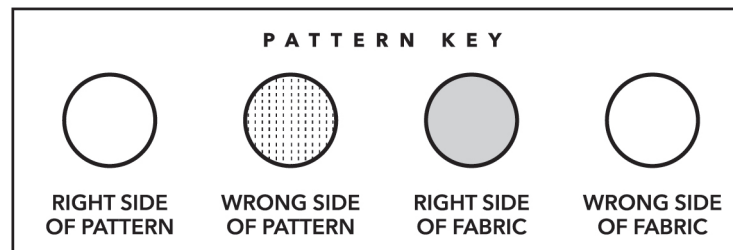
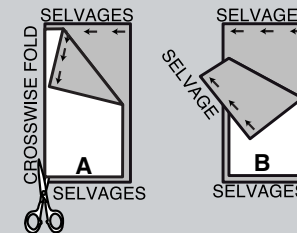
SIZES	XS	S	M	L	XL	XXL	
	(4-6)	(8-10)	(12-14)	(16-18)	(20-22)	(24-26)	
WIDTH, EACH LEG							
ROMPER A	26 $\frac{1}{2}$	27 $\frac{1}{2}$	29 $\frac{1}{2}$	31 $\frac{3}{4}$	34	36 $\frac{1}{4}$	ins.
	67.5	70	75	81	86.5	92	cm.
JUMPSUIT B,C	17	18	19 $\frac{1}{2}$	21	22 $\frac{1}{2}$	24	ins.
	43	45.5	49.5	53.5	57	61	cm.
FINISHED BACK LENGTH FROM BASE OF NECK							
ROMPER A	33 $\frac{1}{2}$	34 $\frac{1}{2}$	35 $\frac{1}{2}$	36 $\frac{1}{2}$	37 $\frac{1}{2}$	38 $\frac{1}{2}$	ins.
	85	87	90	92.5	95	98	cm.
JUMPSUIT B,C	54	55	56	57	58	59	ins.
	138	140	143	145	148	150	cm.

BODY MEASUREMENTS

SIZES	XS	S	M	L	XL	XXL	
	(4-6)	(8-10)	(12-14)	(16-18)	(20-22)	(24-26)	
BUST	29 $\frac{1}{2}$ -30 $\frac{1}{2}$	31 $\frac{1}{2}$ -32 $\frac{1}{2}$	34-36	38-40	42-44	46-48	ins.
	75-77	80-83	87-92	97-102	107-112	117-122	cm.
WAIST	22-23	24-25	26 $\frac{1}{2}$ -28	30-32	34-37	39-41 $\frac{1}{2}$	ins.
	56-58	61-64	67-71	76-81	87-94	99-105	cm.
HIP-9" BELOW WAIST	31 $\frac{1}{2}$ -32 $\frac{1}{2}$	33 $\frac{1}{2}$ -34 $\frac{1}{2}$	36-38	40-42	44-46	48-50	ins.
	80-83	85-88	92-97	102-107	112-117	122-127	cm.
BACK-NECK TO WAIST	15 $\frac{1}{4}$ -15 $\frac{1}{2}$	15 $\frac{3}{4}$ -16	16 $\frac{1}{4}$ -16 $\frac{1}{2}$	16 $\frac{3}{4}$ -17	17 $\frac{1}{4}$ -17 $\frac{1}{2}$	17 $\frac{3}{4}$ -18	ins.
	39-39.5	40-40.5	41.5-42	42.5-43	44-44.5	45-45.5	cm.

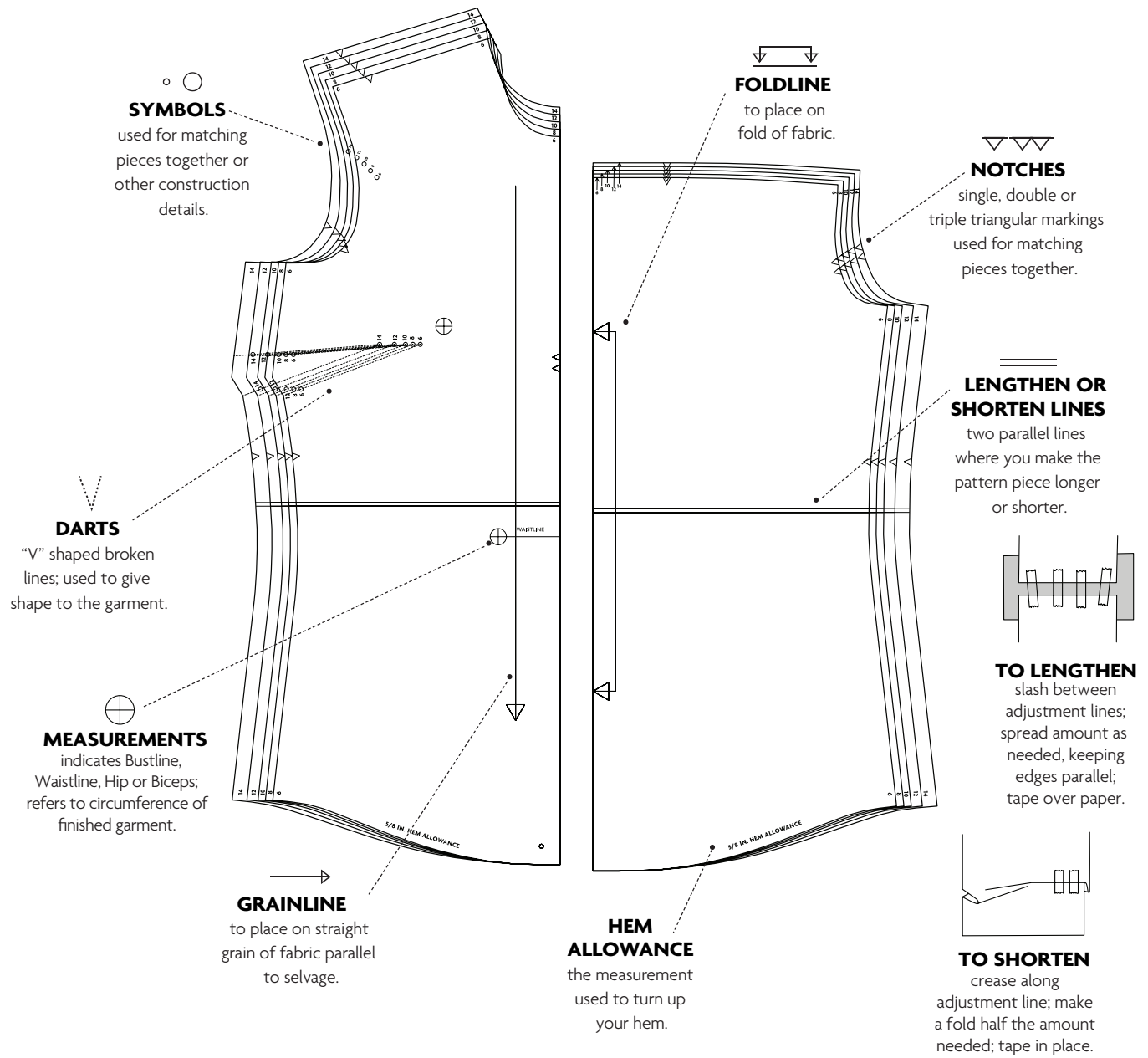
CUTTING AND MARKING

- > **SHRINK FABRIC** if not labeled pre-shrunk. Press.
- > **CIRCLE LAYOUT** for View, Size, Fabric Width.
- > Use **WITH NAP** layout for fabrics with one-way designs, nap, pile or surface shading. Because most knits have surface shading, a with nap layout is used.
- > For **DOUBLE THICKNESS (WITH FOLD)**, fold fabric with right sides together.
- > ***DOUBLE THICKNESS (WITHOUT FOLD)**, for fabrics with nap, fold fabric crosswise, right sides together. Mark as shown. Cut along crosswise fold of fabric (A). Turn upper layer 180° so arrows go in same direction and place over lower layer, right sides together (B).
- > For **SINGLE THICKNESS**, place fabric right side up. (For Fur Pile fabrics, place pile side down.)



- > Before **CUTTING**, place all pieces on fabric according to layout. Pin.
(Layouts show approximate position of pattern pieces; position may vary according to your pattern size.)
 - > ★ Cut other pieces first, allowing enough fabric to cut this piece. Open fabric. Cut piece on single layer of fabric with piece face up on right side of fabric.
 - > Cut accurately, cutting notches outward.
 - > Before removing pattern, **TRANSFER MARKINGS** and lines of construction to **WRONG SIDE** of fabric, using Pin and Chalk Pencil method or Tracing Paper and Dressmaker Wheel. Markings needed on right side of fabric should be thread traced.
- NOTE:** Broken-line boxes (a! b! c!) in layouts represent pieces cut by measurements provided.
- > Prewash your fabric using a method that's suitable for the fabric type.
 - > Fold fabric with right sides together, matching **SELVAGES**.
 - > Pin your pattern pieces to the fabric as shown below and cut them out using a sharp pair of dressmaker's shears.

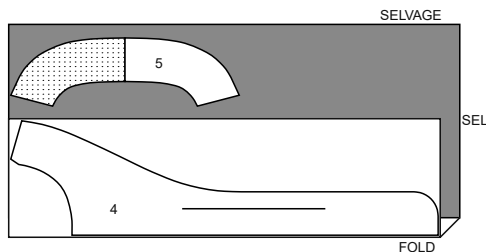
PATTERN MARKINGS



CUTTING LAYOUTS

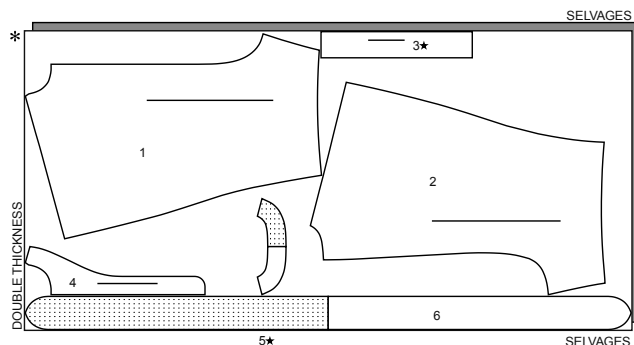
INTERFACING A,B,C

use pieces: 4,5

20" (51 cm)
all sizes

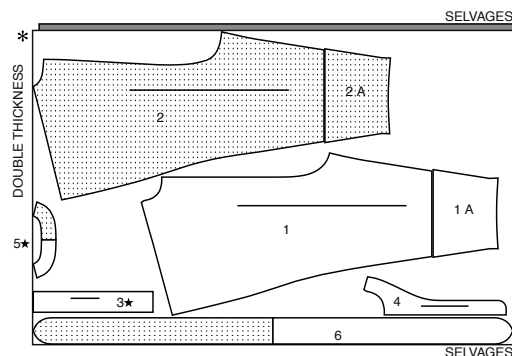
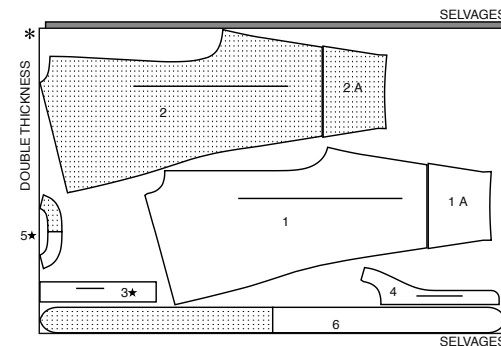
ROMPER AND SASH A

use pieces: 1,2,3,4,5,6

45,60" (115,150 cm)
with nap
all sizes

JUMPSUIT AND SASH B,C

use pieces: 1,1A,2,2A,3,4,5,6

NOTE: Before you alter or cut, lap and tape together pieces 1,1A,2,2A matching ...'s and cutting as one.45" (115 cm)
with nap
all sizes60" (150 cm)
with nap
all sizesPATTERN PIECES WILL BE IDENTIFIED
BY NUMBERS THE FIRST TIME THEY ARE USED.

SEWING INFORMATION

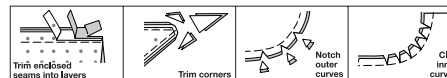
5/8" (1.5cm) SEAM ALLOWANCES ARE INCLUDED,
(unless otherwise indicated)

ILLUSTRATION SHADING KEY

Right Side	Wrong Side	Interfacing	Lining	Underlining

Pin or baste seams, right side together, matching notches. Fit garment before stitching major seams.

Press seam allowances flat; then open unless otherwise stated. Clip where necessary so they lie flat.



GLOSSARY

Sewing terms appearing in **BOLD TYPE** in Sewing Instructions are explained below**FINISH** - Stitch 1/4" (6mm) from raw edge and finish with one of the following:(1) Pink OR (2) Overcast OR (3) Turn in along stitching and stitch close to fold OR
(4) Overlock.**OPTIONAL FOR HEMS:** Apply Seam Binding.**NARROW HEM** - Turn in hem; press, easing in fullness if necessary. Open out hem. Turn in again so raw edge is along crease; press. Turn in along crease; stitch.**SLIPSTITCH** - Slide needle through a folded edge, then pick up a thread of underneath fabric.

Front and Back

TOPSTITCH - On outside, stitch 1/4" (6mm) from edge, seam or previous stitching, using presser foot as guide, or stitch where indicated in instructions.

UNDERSTITCH - Open out facing or underside of garment; stitch to seam allowance close to seam.

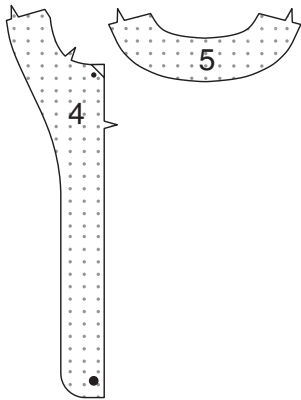
SEWING DIRECTIONS

ROMPER A, JUMPSUIT B, C

NOTE: Under each sub-heading, the first View mentioned will be illustrated, unless otherwise indicated.

Interfacing

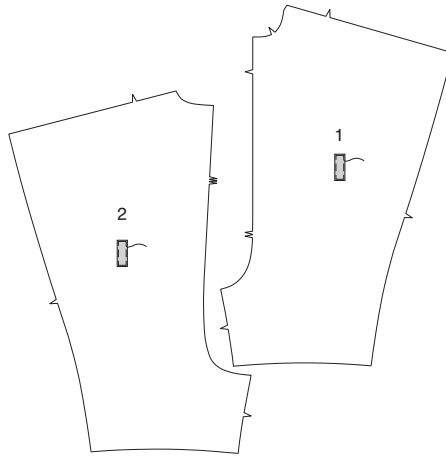
1. Fuse INTERFACING to wrong side of each matching FABRIC section, following manufacturer's instructions.



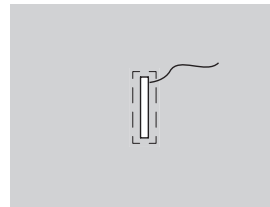
Views B, C:

2. To reinforce underside of buttonhole in FRONT (1) and BACK (2), cut four 1"x 2 1/2" (2.5cm x 6.5cm) remnant of self fabric.

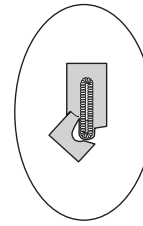
On wrong side, center remnant over buttonhole marking. Baste in place.



3. Make buttonhole at marking.

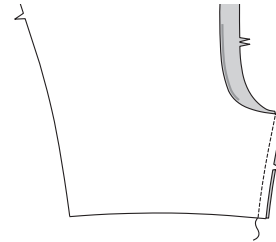


4. If necessary, trim remnant close to buttonhole.

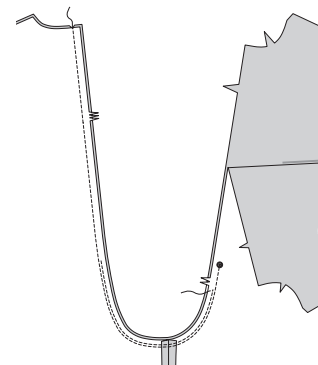


Views A, B, C:

5. Stitch FRONT (1) to BACK (2) at inside leg edge.



6. Stitch center seam, matching inside leg seams, leaving front free above large dots. Stitch again 1/4" (6mm) away in seam allowance along curve. Trim close to second stitching.



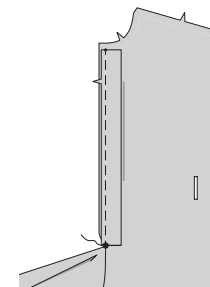
7. With right sides together, fold EXTENSION (3) along foldline. Stitch ends. Trim.



8. Turn. Press. Baste raw edges together.

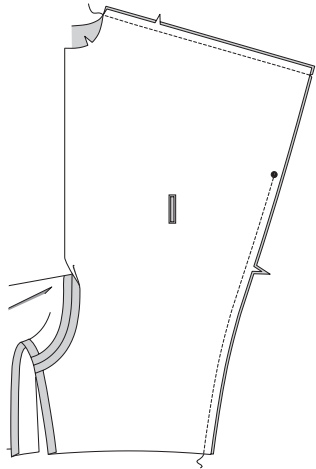


9. On outside, pin extension to left front opening edge, matching small and large dots, and having raw edges even. Baste. Stitch.

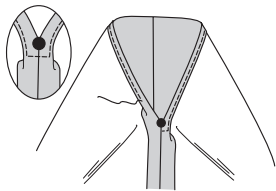


Views A, B:

10. Stitch front to back at shoulder and overarm edges.
Stitch front and back at sides, leaving open above large dots.

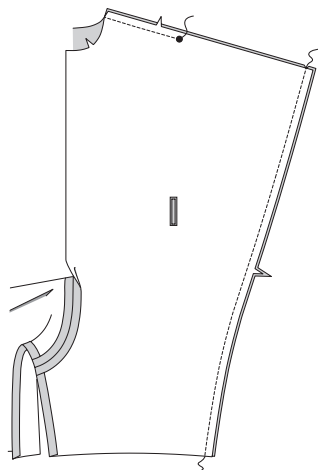


11. Make 5/8" (1.5cm) **NARROW HEM** at armhole opening edges, tapering below large dot, pivoting across seam 1/4" (6mm) below large dot.

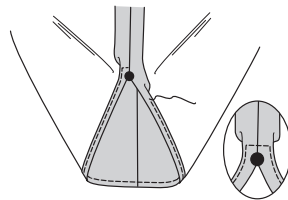


View C:

12. Stitch front to back at shoulder, leaving open below large dot.
Stitch front and back at sides, as shown.

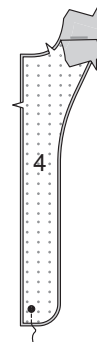


13. Make 5/8" (1.5cm) **NARROW HEM** at armhole opening edges, tapering above large dot, pivoting across seam 1/4" (6mm) above large dot.

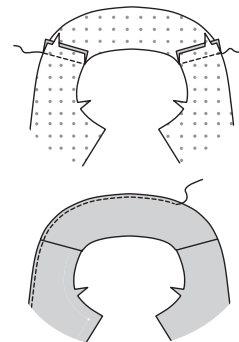


Facing

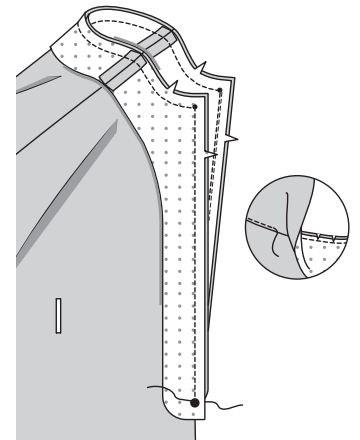
14. Stitch center front seam of **FRONT FACING** (4) below large dot.



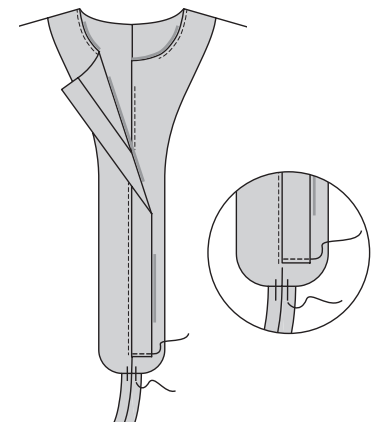
15. Stitch front facing and **BACK NECK FACING** (5) together at shoulders. **FINISH** outer edge of facing.



16. With right sides together, pin facing to neck edge of garment matching centers and symbols. Baste. Stitch, breaking stitching at large dot, as shown. Trim.
UNDERSTITCH facing as far as possible.



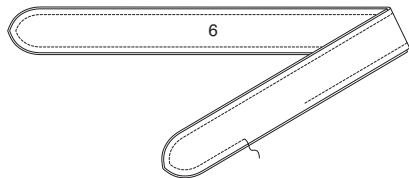
17. Turn facing to inside and extension out. Press. Stitch lower edge of extension to right front facing, as shown, keeping front free. Tack facing in place at seams.



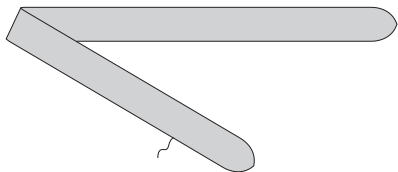
Finishing

Sash A, B, C

18. Stitch SASH (6) sections together, leaving an opening. Trim.

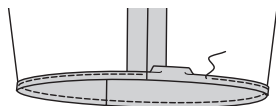


19. Turn. Press. **SLIPSTITCH** opening.

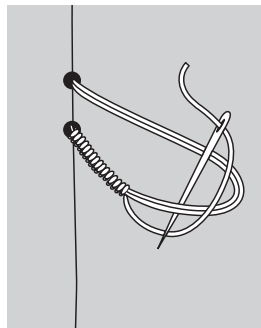


View A:

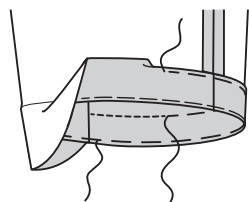
20. Make 5/8" (1.5cm) **NARROW HEM** at lower edge of romper.



21. Make thread loops at side seams on small dots, large enough for sash to pass through.

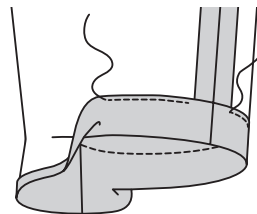


22. View B: Turn up 1-1/2" (3.8cm) hem. Baste close to fold. Turn under 1/4" (6mm) on raw edge; press. Baste close to upper pressed edge. **TOPSTITCH** hem in place along upper basting, as shown.

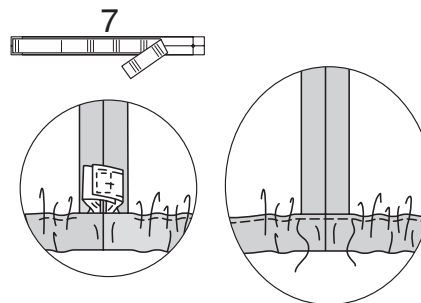


View C:

23. To form casing for elastic, turn lower edge of jumpsuit to inside along foldline. Turn in 1/4" (6mm) on raw edge; press. Stitch, leaving an opening to insert elastic.

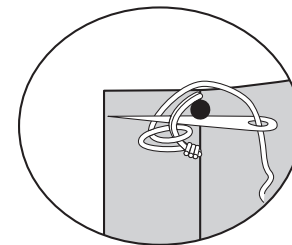


24. Cut elastic the length of GUIDE FOR ELASTIC (7) Pattern Tissue. Insert elastic through casing. Lap ends; hold with safety pin. Try on jumpsuit and adjust if necessary. Stitch ends of elastic securely. Stitch opening, stretching elastic while stitching.

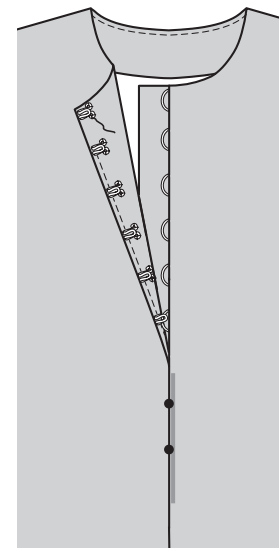


Views A, B, C:

25. Make thread loops on left front opening edge at small dots along seam of front and extension.



26. Lap right front over left, matching centers. Using loops as guide, mark right front facing for hooks. Sew hooks at markings.





Congrats!


You've completed your sewing adventure!

SHARE YOUR look!



Post your pattern and tag us at
@MCCALLPATTERNCOMPANY and use #mccallspatterns
for a chance to be featured on our social media!

Look for more McCall's PDF patterns at **McCallPattern.com**

 1-800-255-2762

© 2022 IG Design Group Americas, Inc. | All Rights Reserved
Sold for individual home use only and not for commercial or manufacturing purposes.