

McCall's[®] by design_{group} M8312



>> MISSES' DRESSES
SKILL LEVEL: EASY



SUGGESTED FABRICS:

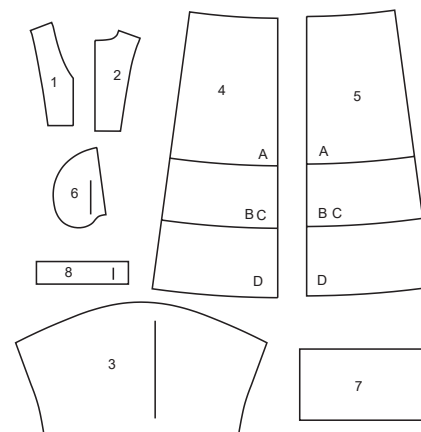
> Gingham, Cotton Blends, Poplin, Sateen.



Your printed tile pieces should be assembled before you move on to this step!

PIECES (8)

- 1 BODICE FRONT
- 2 BODICE BACK
- 3 SLEEVE
- 4 SKIRT FRONT
- 5 SKIRT BACK
- 6 POCKET
- 7 RUFFLE A
- 8 CUFF C, D



YARDAGE CHARTS

SIZES	XS	S	M	L	XL	XXL	
	(4-6)	(8-10)	(12-14)	(16-18)	(20-22)	(24-26)	
DRESS A							
45"*	4 $\frac{1}{8}$	4 $\frac{1}{8}$	4 $\frac{1}{4}$	4 $\frac{1}{4}$	4 $\frac{3}{8}$	4 $\frac{5}{8}$	yds.
60"*	4 $\frac{1}{8}$	4 $\frac{1}{8}$	4 $\frac{1}{4}$	4 $\frac{1}{4}$	4 $\frac{3}{8}$	4 $\frac{1}{2}$	"
115cm*	3.8	3.8	3.9	3.9	4.0	4.3	m.
150cm*	3.8	3.8	3.9	3.9	4.0	4.0	"
DRESS B							
45"*	4	4	4 $\frac{1}{8}$	4 $\frac{1}{4}$	4 $\frac{1}{4}$	4 $\frac{3}{8}$	yds.
60"*	2 $\frac{7}{8}$	3	3	3 $\frac{1}{8}$	3 $\frac{1}{8}$	4	"
115cm*	3.7	3.7	3.8	3.8	3.9	4.0	m.
150cm*	2.7	2.7	2.8	2.9	2.9	3.7	"
DRESS C							
45"*	4	4 $\frac{1}{8}$	4 $\frac{1}{8}$	4 $\frac{1}{4}$	4 $\frac{3}{8}$	4 $\frac{3}{8}$	yds.
60"*	3	3	3 $\frac{1}{8}$	3 $\frac{1}{8}$	3 $\frac{1}{8}$	4	"
115cm*	3.7	3.8	3.8	3.9	4.0	4.0	m.
150cm*	2.8	2.8	2.8	2.9	2.9	3.7	"
DRESS D							
45"*	4 $\frac{5}{8}$	4 $\frac{5}{8}$	4 $\frac{3}{4}$	4 $\frac{7}{8}$	4 $\frac{7}{8}$	5	yds.
60"*	3 $\frac{1}{2}$	3 $\frac{1}{2}$	3 $\frac{1}{2}$	3 $\frac{3}{8}$	4 $\frac{1}{2}$	4 $\frac{5}{8}$	"
115cm*	4.2	4.3	4.4	4.5	4.5	4.6	m.
150cm*	3.2	3.2	3.2	3.2	4.2	4.3	"

FINISHED GARMENT MEASUREMENTS

SIZES	XS	S	M	L	XL	XXL	
	(4-6)	(8-10)	(12-14)	(16-18)	(20-22)	(24-26)	
A,B,C,D WAIST	48 $\frac{1}{2}$	50 $\frac{1}{2}$	54	58	62	66	ins.
	123	128	137	147	157	168	cm.
WIDTH, LOWER EDGE							
DRESS B,C	80	84	88	92	96	100	ins.
	204	214	224	234	244	254	cm.
DRESS D	65 $\frac{1}{2}$	68 $\frac{1}{2}$	73 $\frac{1}{2}$	77 $\frac{1}{2}$	81 $\frac{1}{2}$	85 $\frac{1}{2}$	ins.
	166	177	187	197	207	217	cm.

FINISHED GARMENT MEASUREMENTS

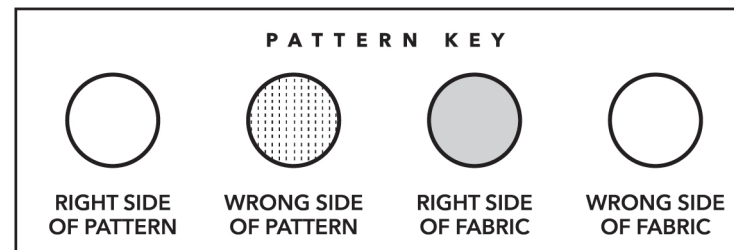
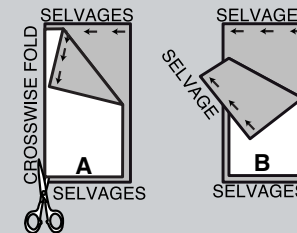
SIZES	XS	S	M	L	XL	XXL	
	(4-6)	(8-10)	(12-14)	(16-18)	(20-22)	(24-26)	
BACK LENGTH FROM BASE OF NECK							
DRESS A (INCL. RUFFLE) B,C	40½	41	41½	42	42½	43	ins.
	103	104	106	107	108	110	cm.
DRESS D	50½	51	51½	52	52½	53	ins.
	128	130	131	132	133	135	cm.

BODY MEASUREMENTS

SIZES	XS	S	M	L	XL	XXL	
	(4-6)	(8-10)	(12-14)	(16-18)	(20-22)	(24-26)	
BUST	29½-30½	31½-32½	34-36	38-40	42-44	46-48	ins.
	75-77	80-83	87-92	97-102	107-112	117-122	cm.
WAIST	22-23	24-25	26½-28	30-32	34-37	39-41½	ins.
	56-58	61-64	67-71	76-81	87-94	99-105	cm.
HIP-9" BELOW WAIST	31½-32½	33½-34½	36-38	40-42	44-46	48-50	ins.
	80-83	85-88	92-97	102-107	112-117	122-127	cm.
BACK-NECK TO WAIST	15¼-15½	15¾-16	16¼-16½	16¾-17	17¼-17½	17¾-18	ins.
	39-39.5	40-40.5	41.5-42	42.5-43	44-44.5	45-45.5	cm.

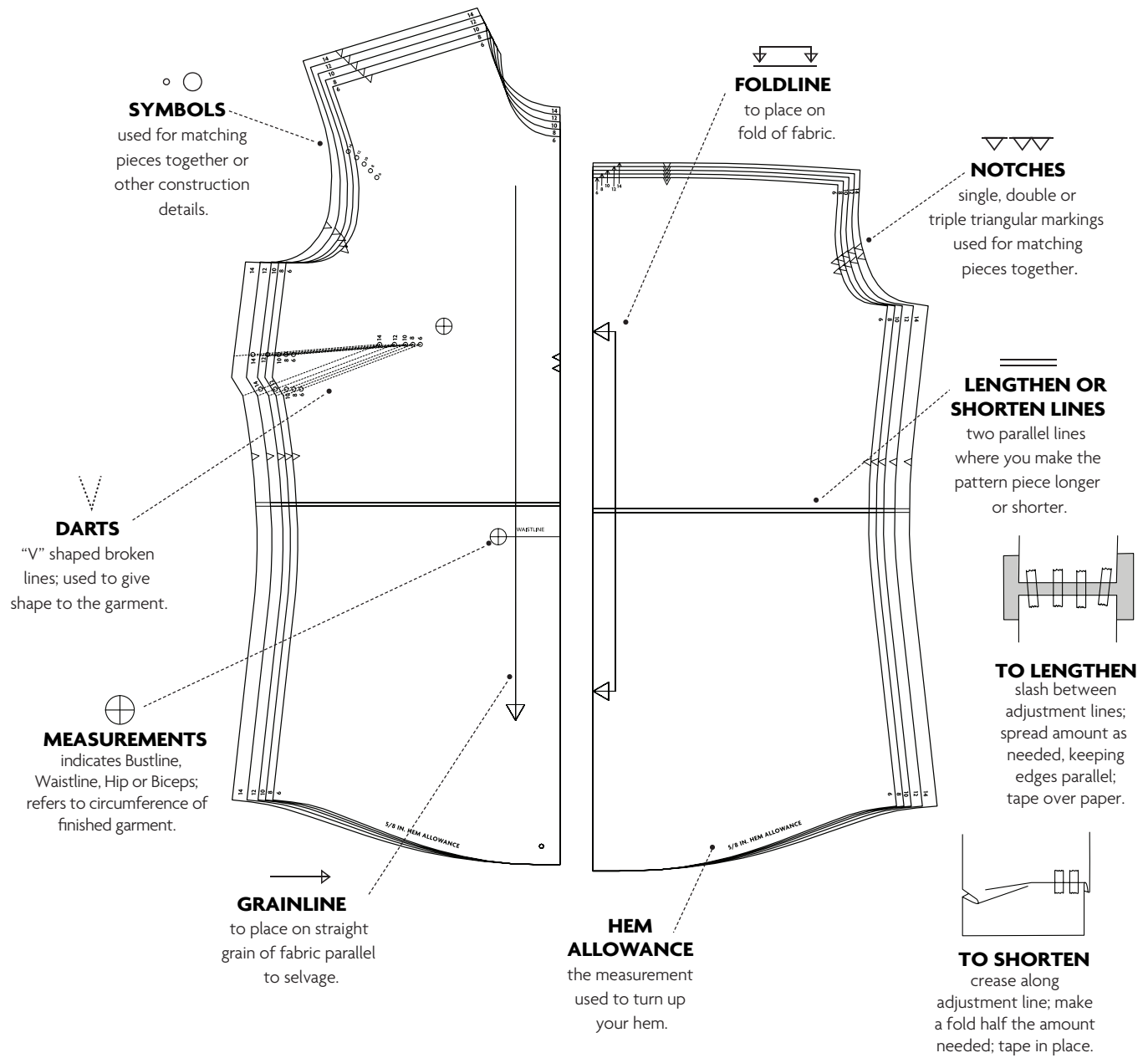
CUTTING AND MARKING

- > **SHRINK FABRIC** if not labeled pre-shrunk. Press.
- > **CIRCLE LAYOUT** for View, Size, Fabric Width.
- > Use **WITH NAP** layout for fabrics with one-way designs, nap, pile or surface shading. Because most knits have surface shading, a with nap layout is used.
- > For **DOUBLE THICKNESS (WITH FOLD)**, fold fabric with right sides together.
- > ***DOUBLE THICKNESS (WITHOUT FOLD)**, for fabrics with nap, fold fabric crosswise, right sides together. Mark as shown. Cut along crosswise fold of fabric (A). Turn upper layer 180° so arrows go in same direction and place over lower layer, right sides together (B).
- > For **SINGLE THICKNESS**, place fabric right side up. (For Fur Pile fabrics, place pile side down.)



- > Before **CUTTING**, place all pieces on fabric according to layout. Pin.
(Layouts show approximate position of pattern pieces; position may vary according to your pattern size.)
- > ★ Cut other pieces first, allowing enough fabric to cut this piece. Open fabric. Cut piece on single layer of fabric with piece face up on right side of fabric.
- > Cut accurately, cutting notches outward.
- > Before removing pattern, **TRANSFER MARKINGS** and lines of construction to **WRONG SIDE** of fabric, using Pin and Chalk Pencil method or Tracing Paper and Dressmaker Wheel. Markings needed on right side of fabric should be thread traced.
- NOTE:** Broken-line boxes (a! b! c!) in layouts represent pieces cut by measurements provided.
- > Prewash your fabric using a method that's suitable for the fabric type.
- > Fold fabric with right sides together, matching **SELVAGES**.
- > Pin your pattern pieces to the fabric as shown below and cut them out using a sharp pair of dressmaker's shears.

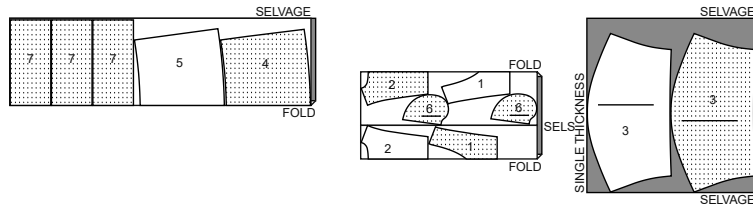
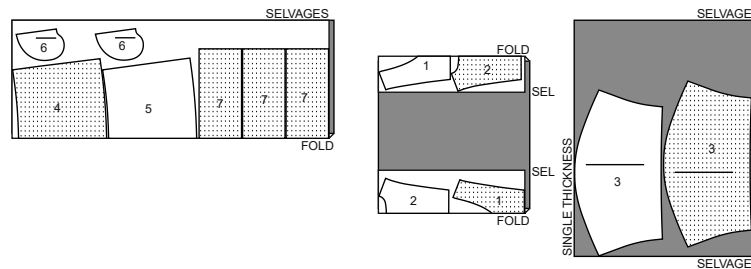
PATTERN MARKINGS



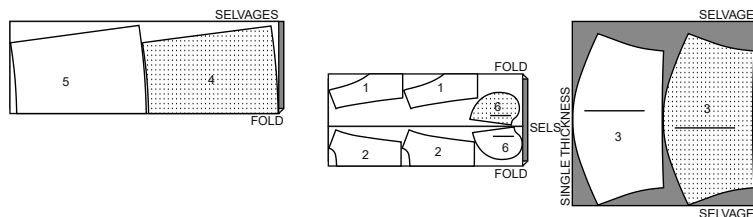
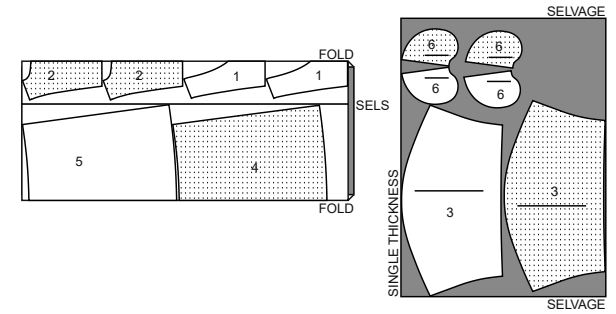
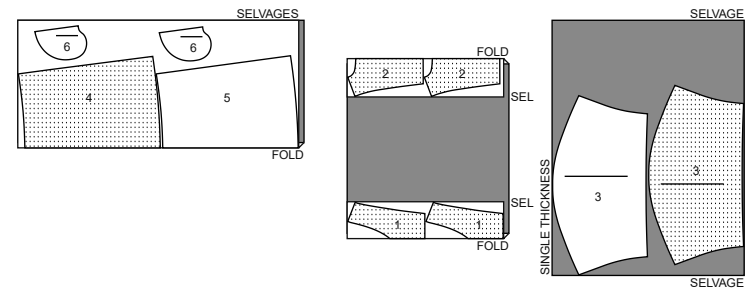
CUTTING LAYOUTS

DRESS A

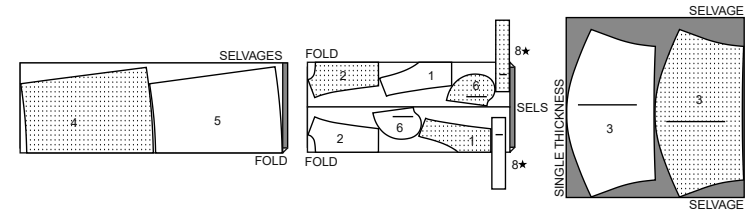
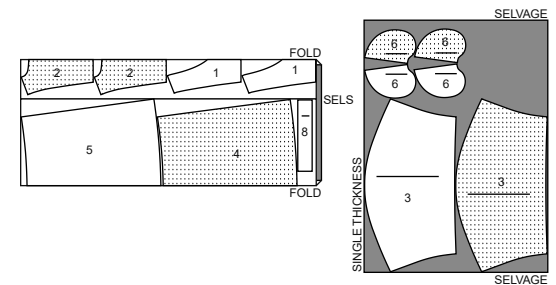
use pieces: 1,2,3,4,5,6,7

45" (115 cm)
with nap
all sizes60" (150 cm)
with nap
all sizes**DRESS B**

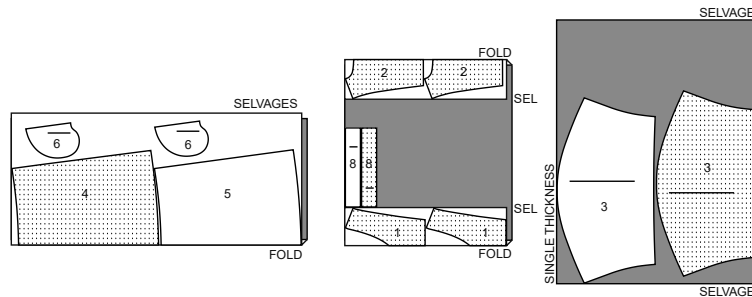
use pieces: 1,2,3,4,5,6

45" (115 cm)
with nap
all sizes60" (150cm)
with nap
sizes XS-S-M-L-XL60" (150cm)
with nap
size XXL**DRESS C**

use pieces: 1,2,3,4,5,6,8

45" (115 cm)
with nap
all sizes60" (150cm)
with nap
sizes XS-S-M-L-XL

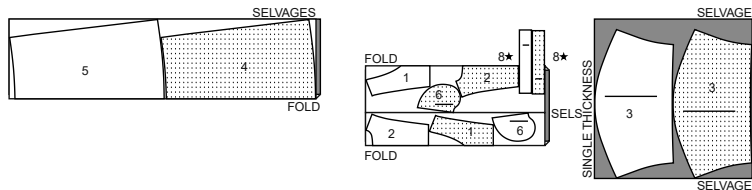
60" (150cm)
with nap
size XXL



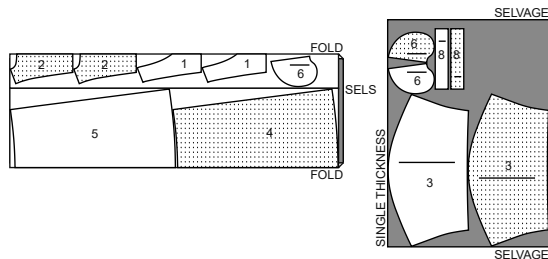
DRESS D

use pieces: 1,2,3,4,5,6,8

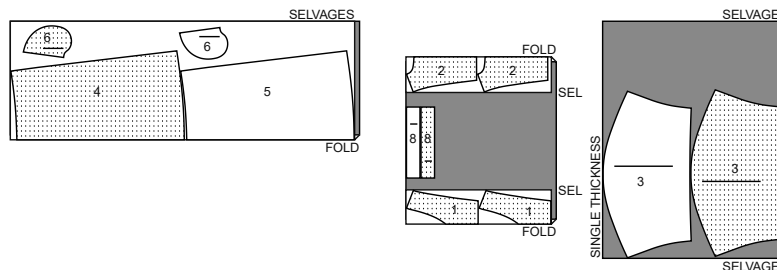
45" (115 cm)
with nap
all sizes



60" (150cm)
with nap
sizes XS-S-M-L



60" (150cm)
with nap
sizes XL-XXL



PATTERN PIECES WILL BE IDENTIFIED
BY NUMBERS THE FIRST TIME THEY
ARE USED.

SEWING INFORMATION

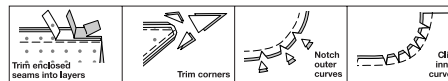
$\frac{5}{8}$ " (1.5cm) SEAM ALLOWANCES
ARE INCLUDED,
(unless otherwise indicated)

ILLUSTRATION SHADING KEY

Right Side	Wrong Side	Interfacing	Lining	Underlining

Pin or baste seams, right side together,
matching notches. Fit garment before
stitching major seams.

Press seam allowances flat; then open
unless otherwise stated. Clip where
necessary so they lie flat.



GLOSSARY

Sewing terms appearing in **BOLD TYPE** in Sewing Instructions are explained below.

EDGE STITCH - Stitch close to finished edge or seam.

GATHER - Stitch along seamline and again $\frac{1}{4}$ " (6mm) away in seam allowance, using long machine stitches. Pull thread ends when adjusting to fit.

NARROW HEM - Turn in hem; press, easing in fullness if necessary. Open out hem. Turn in again so raw edge is along crease; press. Turn in along crease; stitch.

SLIPSTITCH - Slide needle through a folded edge, then pick up a thread of underneath fabric.



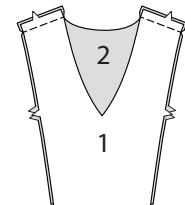
SCAN QR CODE
FOR A
STEP-BY-STEP
VIDEO TUTORIAL

SEWING DIRECTIONS

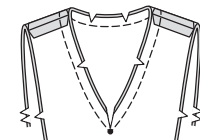
DRESS A, B, C, D

NOTE: Under each sub-heading, the first View will be illustrated unless otherwise indicated.

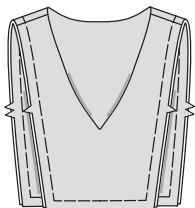
1. Stitch one Bodice Front (1) section to one Bodice Back (2) section at shoulders. For facing, stitch remaining bodice sections together at shoulders.



2. With **RIGHT** sides together, pin facing to bodice, matching seams. Stitch neck edge, pivoting at small dot. Clip to small dot. Trim.



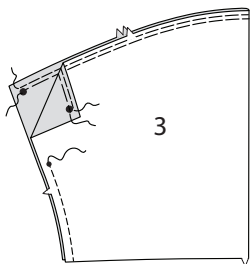
- 3.** Turn facing to **INSIDE**; press. Baste raw edges together.



- 4. GATHER** upper edge of Sleeve (3) between large dots. Stitch sleeve seam below lower small dot.

VIEWS A, B: Make 5/8" (1.5cm) **NARROW HEM** at lower edge of sleeve.

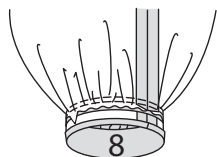
VIEWS C, D: **GATHER** lower edge of sleeve.



VIEWS C, D

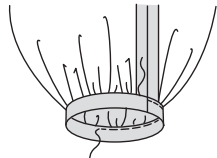
- 5.** Stitch ends of Cuff (8) together.

Turn in seam allowance on unnotched edge of cuff; press. Trim pressed seam allowance to 3/8" (1cm). Pin cuff to lower edge of sleeve, matching seams. Adjust gathers; baste. Stitch. Trim. Press seam toward cuff.



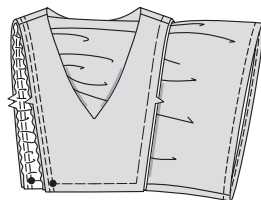
- 6.** Turn cuff to inside along foldline, placing pressed edge over seam. **SLIPSTITCH.**

EDGESTITCH upper edge of cuff.



CONTINUE AS FOLLOWS FOR ALL VIEWS

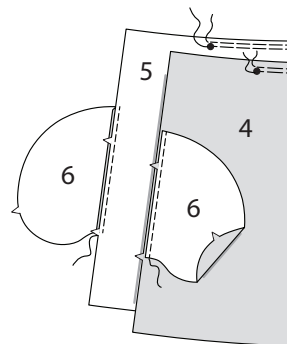
- 7.** Pin sleeve to armhole edge of bodice, matching upper small dot to shoulder seam. Adjust gathers, distributing evenly. Baste. Stitch. Stitch again 1/4" (6mm) away in seam allowance. Trim close to stitching. Press seam toward bodice.



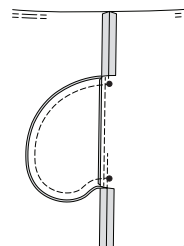
Skirt

- 8. GATHER** upper edge of Skirt Front (4) between large dots.

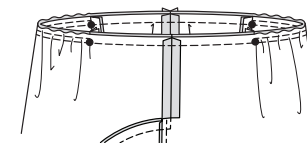
GATHER upper edge of Skirt Back (5) between large dots. Stitch one Pocket (6) section to skirt front and skirt back at each side in 1/4" (6mm) seam. Press seams toward pockets.



- 9.** Stitch fronts and back together at sides, leaving open between large dots. Stitch pocket edges together to side seams. Clip back seam allowances above and below pockets. Turn pockets toward front along seamlines; press.



- 10.** Pin bodice and sleeve to skirt, matching centers and dots. Adjust gathers; baste. Stitch. Stitch again 1/4" (6mm) away in seam allowance. Trim close to stitching. Press seam up.



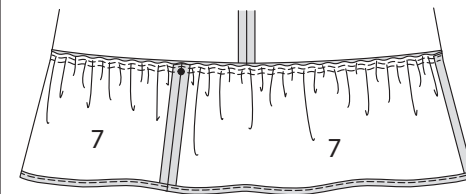
Ruffle and Hem

- 11. VIEW A:** Stitch Ruffle (7) sections together at ends.

GATHER upper edge of ruffle.

Make 5/8" (1.5cm) **NARROW HEM** at lower edge. Pin ruffle to lower edge of skirt, matching one seam to center back and remaining seams to large dots on front. Adjust gathers; baste. Stitch. Stitch again 1/4" (6mm) away in seam allowance. Trim close to stitching. Press seam up.

VIEWS B, C, D: Make 5/8" (1.5cm) **NARROW HEM** at lower edge of skirt.





Congrats!


You've completed your sewing adventure!

SHARE YOUR look!



Post your pattern and tag us at
@MCCALLPATTERNCOMPANY and use #mccallspatterns
for a chance to be featured on our social media!

Look for more McCall's PDF patterns at **McCallPattern.com**

 1-800-255-2762

© 2022 IG Design Group Americas, Inc. | All Rights Reserved
Sold for individual home use only and not for commercial or manufacturing purposes.