

McCall's

M8306



LAURA ASHLEY

Manufactured and distributed by McCall's, a division of IG Design Group Americas, Inc. under license from Laura Ashley, Inc. ©2022 Laura Ashley, Inc. All rights reserved.



Average

MISSES' TOP AND SKIRTS

Suggested Fabrics: Cotton Blends, Challis, Lawn, Lightweight Denim. **Interfacing A:** Lightweight Fusible.

Notions: **A:** Seven 3/8" (1cm) buttons, 1 3/4 yds. (1.6m) of 1/4" (6mm) ribbon, 2 yds. (1.9m) of 1/2" wide (1.3cm) insertion lace, 2 1/4 yds. (2.1m) of 1/2" (1.3cm) wide single-edge scalloped lace. **B,C:** 3 1/2 yds. (3.2m) of 1/4" (6mm) elastic. **Also for B:** 5 yds. (4.6m) of 1/2" (1.3cm) wide single-edge scalloped lace.

Sizes	6	8	10	12	14	16	18	20	22	24
European	32	34	36	38	40	42	44	46	48	50

BODY MEASUREMENTS: Select pattern size based on body measurements

Bust	30 1/2	31 1/2	32 1/2	34	36	38	40	42	44	46	Ins.
Waist	23	24	25	26 1/2	28	30	32	34	37	39	"
Hip -9" below waist	32 1/2	33 1/2	34 1/2	36	38	40	42	44	46	48	"
Back-neck to waist	15 1/2	15 3/4	16	16 1/4	16 1/2	16 3/4	17	17 1/4	17 1/2	17 3/4	"

Top A	45****	1 1/8	1 1/8	1 1/8	1 1/8	1 1/4	1 1/2	1 1/2	1 3/4	1 3/4	Yds.
	60****	7/8	7/8	1	1	1 1/4	1 1/4	1 3/8	1 3/8	1 3/8	"
Interfacing	20"	3/8	3/8	3/8	3/4	3/4	3/4	1 1/8	1 1/8	1 1/8	"

Skirt B - 45, 60** - 4 yds.**

Skirt C - 45, 60** - 5 3/8 yds.**

FINISHED GARMENT MEASUREMENTS (Includes Design and Wearing Ease)

Width, lower edge											
Skirt B (excl. ruffle)	77	78	79	80 1/2	82 1/2	84 1/2	86 1/2	88 1/2	90 1/2	92 1/2	Ins.
Finished back length from base of neck											
Top A	18 1/2	18 3/4	19	19 1/4	19 1/2	19 3/4	20	20 1/4	20 1/2	20 3/4	Ins.
Finished back length from waist											
Skirt B (incl. ruffle)											
	34 1/2	34 1/2	34 1/2	34 1/2	34 1/2	34 1/2	34 1/2	34 1/2	34 1/2	34 1/2	Ins.
Skirt C	32	32	32	32	32	32	32	32	32	32	"

Moins Facile

HAUT ET JUPES POUR JEUNES FEMMES

Tissus Conseillés: Cotonnades, Challis, Linon, Denim léger. **Entoilage A:** Thermocollant léger.

Mercerie: **A:** 7 boutons de 1cm, 1.6m de ruban de 6mm de large, 1.9m de garniture de dentelle d'insertion de 1.3cm de large, 2.1m de galon de dentelle festonnée à simple bord de 3.2cm de large. **B,C:** 3.2m d'élastique de 6mm de large. **Aussi pour B:** 4.6m de galon de dentelle festonnée à simple bord de 1.3cm de large.

Tailles	6	8	10	12	14	16	18	20	22	24
Françaises	34	36	38	40	42	44	46	48	50	52
Européen	32	34	36	38	40	42	44	46	48	50

MESURES DU CORPS: Choisissez la taille du patron basée sur les mesures du corps

Poitrine	78	80	83	87	92	97	102	107	112	117	cm
Taille	58	61	64	67	71	76	81	87	94	99	"

Hanches (23cm au-dessous de la taille)	83	85	88	92	97	102	107	112	117	122	cm
Dos du cou à la taille	39.5	40	40.5	41.5	42	42.5	43	44	44.5	45	"

Haut A	115cm****	1.1	1.1	1.1	1.1	1.2	1.3	1.4	1.4	1.5	1.6	m
	150cm****	0.8	0.8	1.0	1.0	1.0	1.1	1.2	1.2	1.3	1.3	"

Entoilage	51cm*	0.6	0.6	0.6	0.7	0.7	0.7	0.7	1.1	1.1	1.1	"
------------------	-------	-----	-----	-----	-----	-----	-----	-----	-----	-----	-----	---

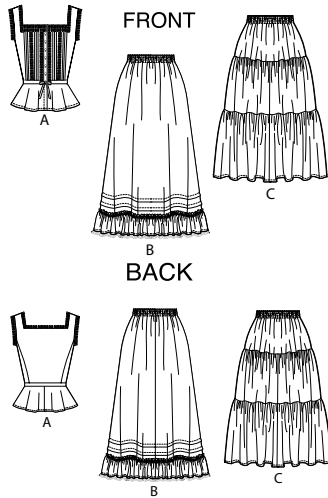
Jupe B - 115, 150cm** - 3.7m.**

Jupe C - 115, 150cm** - 5.0m.**

MESURES DES VÊTEMENTS FINI (Motif et aisance de port compris)

Largeur à l'ourlet											
Jupe B (hors volant)	196	199	201	205	210	215	220	225	230	235	cm
Longueur finie - dos, votre nuque à l'ourlet											
Haut A	47	47.5	48.5	49	49.5	50	51	51.5	52	52.5	cm
Longueur finie - dos, taille à l'ourlet											
Jupe B (y compris volant)	87.5	87.5	87.5	87.5	87.5	87.5	87.5	87.5	87.5	87.5	cm
Jupe C	81.5	81.5	81.5	81.5	81.5	81.5	81.5	81.5	81.5	81.5	"

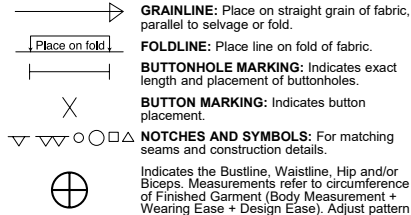




FRONT

BACK

PATTERN MARKINGS



GRAINLINE: Place on straight grain of fabric, parallel to selvage or fold.
FOLDLINE: Place line on fold of fabric.
BUTTONHOLE MARKING: Indicates exact length and placement of buttonholes.
BUTTON MARKING: Indicates button placement.
NOTCHES AND SYMBOLS: For matching seams and construction details.
 Indicates the Bustline, Waistline, Hip and/or Biceps. Measurements refer to circumference of Finished Garment (Body Measurement + Wearing Ease + Design Ease). Adjust pattern if necessary. The measurement excludes pleats, tucks, darts and seam allowances.
SEAM ALLOWANCE: 5/8" (1.5cm) included unless otherwise indicated, but not printed on tissue.

ADJUST IF NECESSARY

Lengthen or Shorten at adjustment lines (==) or where indicated on pattern. If substantial length is added, you may need to purchase additional fabric.
TO SHORTEN: Crease along adjustment line. Make a fold half the amount needed. Tape in place.
TO LENGTHEN: Slash between adjustment lines. Spread amount as needed, keeping edges parallel. Tape over paper.
 When Alteration lines are not on tissue, lengthen or shorten at lower edge.

CUTTING AND MARKING

SHRINK FABRIC if not labeled pre-shrunk. Press.
CIRCLE LAYOUT for View, Size, Fabric Width.
 Use **WITH NAP** layout for fabrics with one-way designs, nap, pile or surface shading. Because most knits have surface shading, a with nap layout is used.
 For **DOUBLE THICKNESS (WITH FOLD)** - fold fabric with right sides together.
*** DOUBLE THICKNESS (WITHOUT FOLD)** - For fabrics with nap, fold fabric crosswise, right sides together. Mark as shown. Cut along crosswise fold of fabric (A). Turn upper layer 180° so arrows go in same direction and place over lower layer, right sides together (B).
 For **SINGLE THICKNESS** - place fabric right side up. (For Fur Pile fabrics, place pile side down.)
 ★ Cut other pieces first, allowing enough fabric to cut this piece. Open fabric. For "Cut 1" pieces, cut piece once on single layer of fabric with piece face up on right side of fabric.
 Pattern may have cutting lines for several sizes. Select the proper cutting line or pattern pieces for your size.
 Before **CUTTING** place all pieces on fabric according to layout. Pin. (Layouts show approximate position of pattern pieces; position may vary according to your pattern size.) Cut **ACCURATELY**, cutting notches outward.
 Before removing pattern, **TRANSFER MARKINGS** and lines of construction to Wrong Side of fabric, using the Pin and Chalk Pencil method or Tracing Paper and Dressmaker Wheel. Markings needed on right side of fabric should be thread traced.
NOTE: Broken-line boxes (a| b| c|) in layouts represent pieces cut by measurements provided.

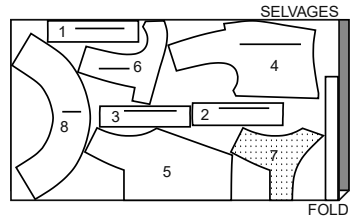
CUTTING LAYOUTS

RIGHT SIDE OF PATTERN	WRONG SIDE OF PATTERN	RIGHT SIDE OF FABRIC	WRONG SIDE OF FABRIC
-----------------------	-----------------------	----------------------	----------------------

SKIRT A

use pieces: 1,2,3,4,5,6,7,8,9

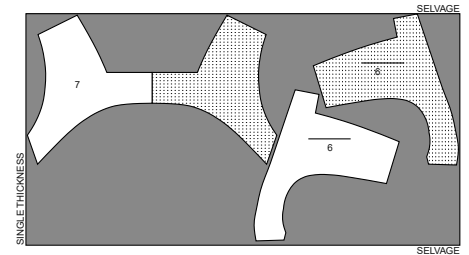
45" (115 cm)
with nap
sizes 6-8-10-12-14



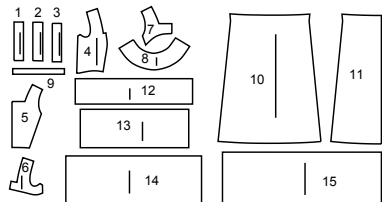
INTERFACING A

use pieces: 6,7

20" (51 cm)
without nap
all sizes

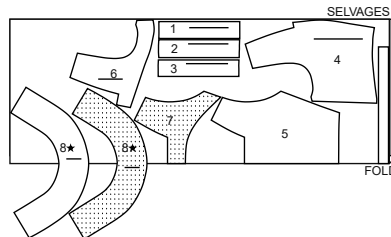


15 PATTERN PIECES

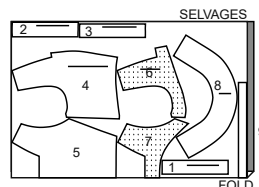


- 1 Front Band- A
- 2 Front- A
- 3 Side Front- A
- 4 Side- A
- 5 Back- A
- 6 Front Facing- A
- 7 Back Facing- A
- 8 Peplum- A
- 9 Casing- A
- 10 Skirt Back- B
- 11 Skirt Front- B
- 12 Ruffle- B
- 13 Skirt- C
- 14 Upper Ruffle- C
- 15 Lower Ruffle- C

45" (115 cm)
with nap
sizes 16-18-20-22-24



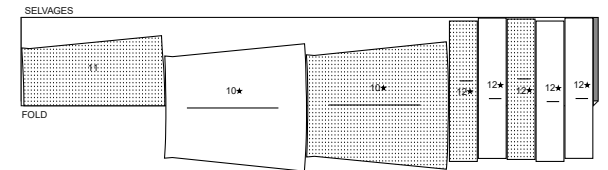
60" (150 cm)
with nap
sizes 6-8-10-14-16-18-20-22-24



SKIRT B

use pieces: 10,11,12

45, 60" (115, 150 cm)
with nap
all sizes



SKIRT C

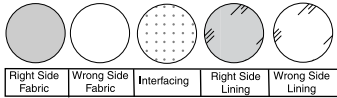
use pieces: 13,14,15

45, 60" (115, 150 cm)
with nap
all sizes



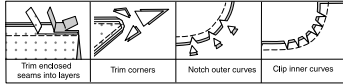
SEWING INFORMATION

FABRIC KEY



SEAM ALLOWANCES

Use 5/8" (1.5cm) seam allowances unless otherwise indicated



PIN AND FIT

Pin or baste seams, **RIGHT SIDE TOGETHER**, matching notches. Fit garment before stitching major seams.

PRESS

Press seam allowances flat; then open unless otherwise stated. Clip where necessary so they lie flat.

GLOSSARY

Sewing terms appearing in **BOLD TYPE** in Sewing Instructions are explained below.

FINISH - Stitch 1/4" (6mm) from raw edge and finish with one of the following: (1) Pink OR (2) Overcast OR (3) Turn in along stitching and stitch close to fold OR (4) Overlock.

OPTIONAL FOR HEMS: Apply Seam Binding.

GATHER - Stitch along seamline and again 1/4" (6mm) away in seam allowance, using long machine stitches. Pull thread ends when adjusting to fit.

NARROW HEM - Turn in hem; press, easing in fullness if necessary. Open out hem. Turn in again so raw edge is along crease; press. Turn in along crease; stitch.

SLIPSTITCH - Slide needle through a folded edge, then pick up a thread of underneath fabric.

STAYSTITCH - Stitch 1/8" (3mm) from seamline in seam allowance (usually 1/2" (13mm) from raw edge).

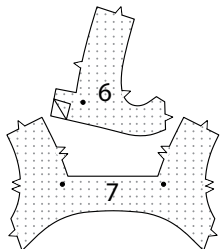
TOPSTITCH - On outside, stitch 1/4" (6mm) from edge, seam or previous stitching, using presser foot as guide, or stitch where indicated in instructions.

SEWING DIRECTIONS

TOP A

INTERFACING

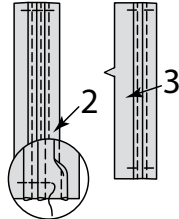
1. Pin **INTERFACING** to wrong side of each matching **FABRIC** section. Fuse, following manufacturer's instruction.



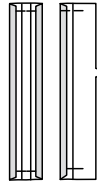
FRONT AND BACK

2. To make three pin tucks on each **FRONT** (2) and two pin tucks on **SIDE FRONT** (3) sections, on outside fold along foldline and stitch 1/16" (1.5mm) from fold.

Press tucks toward side. Baste across upper and lower edges.



3. Press under 3/8" (1cm) on both long edges of front (2) and on unnotched edge of side front (3) sections.



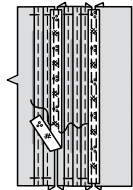
4. Press under 3/8" (1cm) on long edge of **FRONT BAND** (1), nearest buttonhole markings.



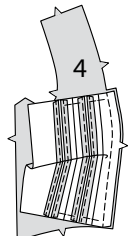
5. To add trim to front, place front band and tucked front sections side by side on a flat surface, as illustrated.

The three pattern pieces will be joined together by stitching lace with two straight edges between them, as follows:

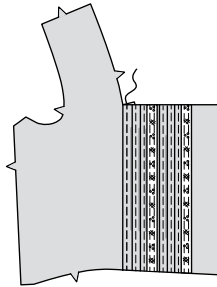
To make front panel, with right sides up, pin lace just over pressed edges of front band and tucked sections. Baste lace along straight edges. Stitch close to finished edge of lace.



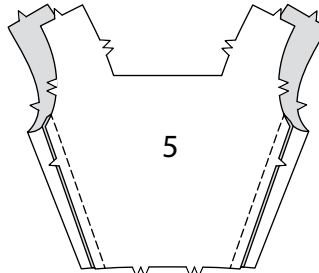
6. With right sides together, baste front panel to **SIDE** (4) matching notches.



7. Press basted seam toward front. On outside, **TOPSTITCH** close to seam. Remove basting.



8. With right sides together stitch front to **BACK** (5) at side seams.



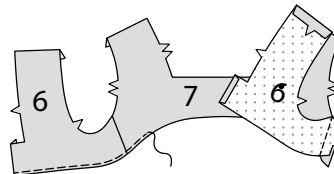
NECK AND ARMHOLE FACING

9. Stitch **FRONT FACING** (6) to **BACK FACING** (7) at sides.

FINISH lower edge of facing.

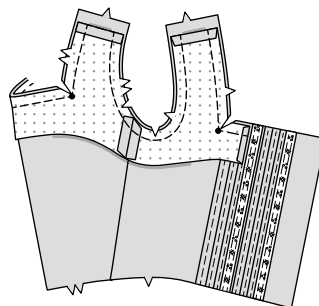
Press under 5/8" (1.5cm) on shoulder edges of facing.

Press under 3/8" (1cm) on front edge.



10. With right sides together, pin facing to top, matching notches, seams and center back. Stitch along neck and armhole edges.

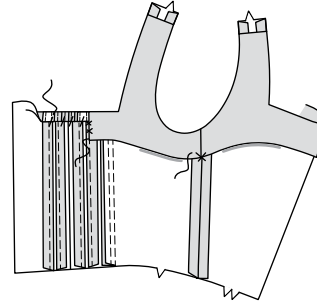
Trim seam, clip curves. Clip inward corners.



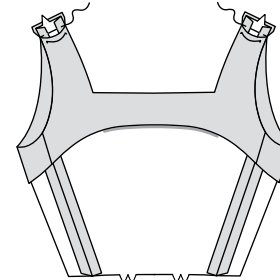
11. Turn facing to inside, continuing to turn edges across top to inside on seam line. Press.

Catchstitch facing to seam and hem pressed under edges to front. Press.

Press under 5/8" (1.5cm) on front opening edge.

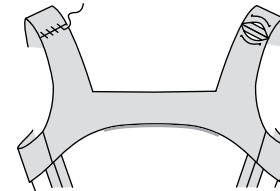


12. Stitch front to back at shoulders, keeping facing free.



13. Finger press shoulder seams open. Slip seam allowances under facing.

SLIPSTITCH shoulder edges of facing together.

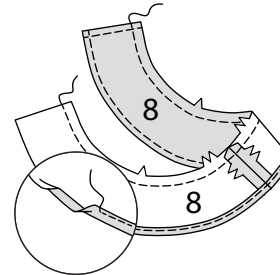


PEPLUM AND FRONT BAND

14. With right sides together stitch center back seam of **PEPLUM** (8) sections.

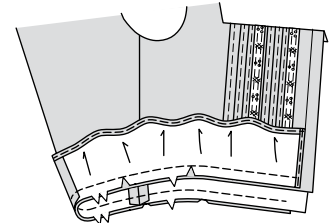
NARROW HEM front and lower edges.

STAYSTITCH upper edge.



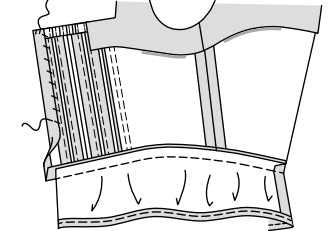
15. With right sides together, pin peplum to lower edge of top, matching notches and seams, placing peplum seam at center back and front edges to fold line on front band. Clip to stay-stitching if necessary. Baste. Stitch.

Press peplum seam allowance up.



16. Press under 5/8" (1.5cm) along front edges of band.

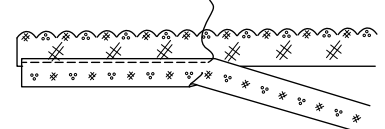
Turn band to inside along foldline. **SLIPSTITCH** pressed edge over seam, continuing along upper and lower edges.



FINISHING

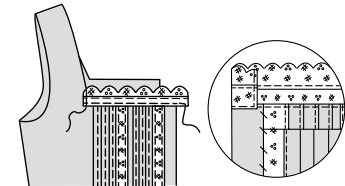
NECK AND ARMHOLE TRIMMING

17. With right sides facing up, layer one straight edge of lace over straight edge of scalloped lace, forming strip. Stitch in place, as shown.

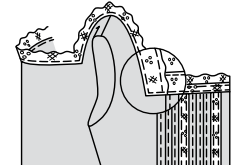


18. With right sides facing up, pin lace strip to neck edge, allowing extra length for turning, having straight edge of strip just over finished edge of top. Stitch close to finished edge of lace. Baste side edge to top.

Turn front edge of lace to inside and stitch in place.

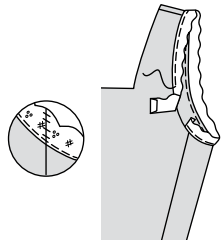


19. Using lace with one straight edge, with right sides up, pin straight edge of lace just over finished edge of front and back, folding ends over lower edge of front strip. Stitch close to straight edge of lace, continuing stitching across ends over strip, as shown.



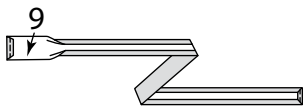
20. With right side facing up, pin lace to finished edge of armhole, turning in and lapping one end of lace over the other at side seam. Stitch close to straight edge of lace.

SLIPSTITCH ends of lace together.



CASING AND RIBBON

21. Press under 1/4" (6mm) on all edges of CASING (9). Stitch across short ends.

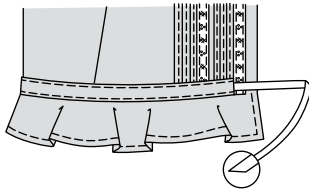


22. On outside, pin casing to lower edge of top, having one long edge along waistline seam, matching centers back, easing top slightly to fit.

Stitch close to long edges of casing, leaving front open.

Insert ribbon through casing, having ends extending evenly.

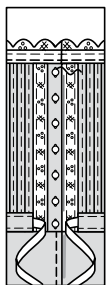
To finish ends of ribbon, cut diagonally, as shown.



BUTTONHOLES AND BUTTONS

23. Make buttonholes in right front at markings.

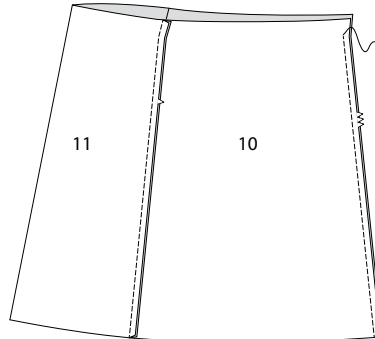
Lap right over left front matching centers. Sew buttons under buttonholes.



SKIRT B

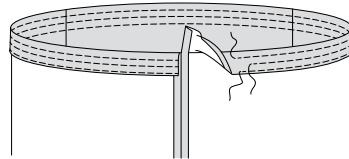
1. With right sides together, stitch center back seam of SKIRT BACK (10) sections, ending at foldline for casing.

Stitch SKIRT FRONT (11) to back at side front seams.



2. Press upper edge of skirt to inside along foldline. Turn under 1/4" (6mm) on raw edge. Stitch close to inner pressed edge.

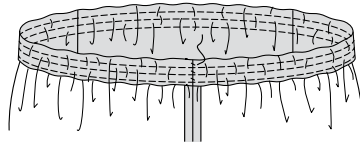
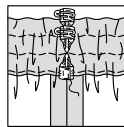
To form three separate casings, stitch again 1/2" (1.3cm) from first stitching, and 1/2" (1.3cm) from folded edge.



3. Cut three pieces of elastic each a comfortable waist measurement, plus 1/2" (1.3cm).

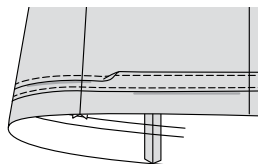
Insert elastic through openings. Lap ends; hold with safety pins. Try on and adjust if necessary. Stitch ends of elastic securely.

SLIPSTITCH openings closed.



4. To make two pin tucks on lower edge of skirt, on outside, fold along foldlines. Stitch along stitching line, as shown.

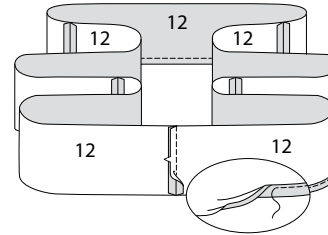
Press tucks down.



FINISHING

5. Stitch seams of RUFFLE (12) sections.

NARROW HEM lower edge of ruffle.

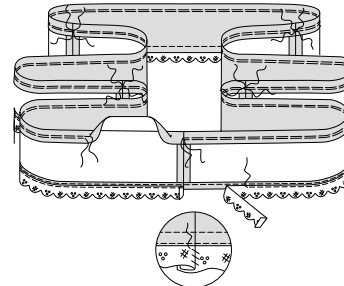


6. On inside, pin lower edge of ruffle over straight edge of scalloped lace, turning under and lapping ends at side seam. Stitch close to lower edge of ruffle.

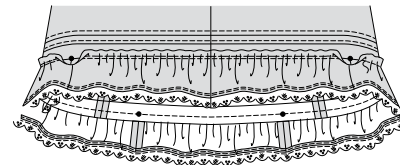
SLIPSTITCH ends together.

Turn upper edge of ruffle to inside along foldline. Press.

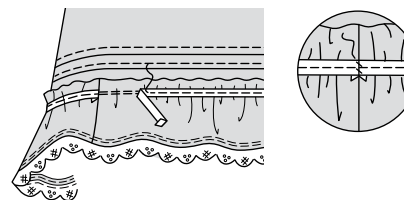
GATHER upper edge of ruffle along gathering line, breaking stitching at side seams.



7. On outside, pin wrong side of ruffle, to right side of skirt having lower gathering line along seam line on skirt, matching one seam to center back and remaining seams to circles. Adjust gathers to fit. Baste. Stitch along gathering lines.

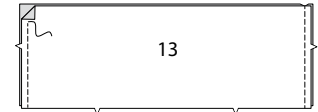


8. On outside, pin edge of ribbon to ruffle seam, having one long edge along lower gathering line. Turn under and lap ends at one side seam. Stitch along center of ribbon. SLIPSTITCH ends of ribbon together.



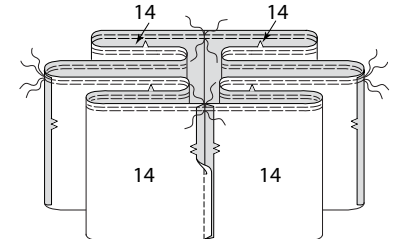
SKIRT C

1. With right sides together, stitch SKIRT (13) sections together, leaving one seam open above casing line.

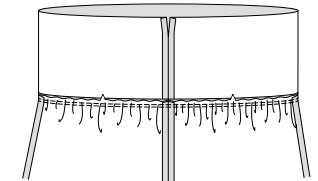


2. Stitch seams in UPPER RUFFLE (14) sections.

GATHER upper edge of ruffle, breaking stitching at seams.



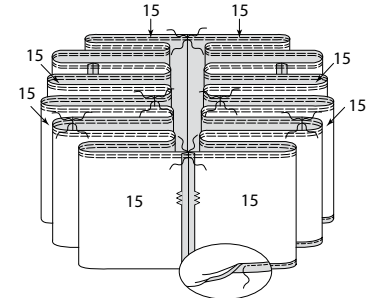
3. With right sides together, pin ruffle to skirt matching notches and side seams, matching remaining ruffles seams to centers. Adjust gathers. Baste. Stitch. Press seam up.



4. Stitch seams in LOWER RUFFLE (15) sections.

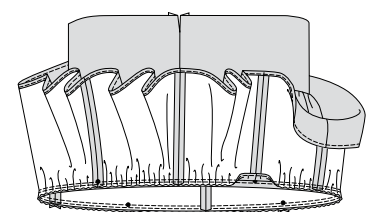
GATHER upper edge of ruffle, breaking stitching at seams.

NARROW HEM lower edge of ruffle.



5. With right sides together, pin lower to upper ruffle matching ruffle seams to large circles and remaining seams to center skirt seams. Adjust gathers. Baste. Stitch. Press seam up.

Complete elastic casing same as for SKIRT A - see steps 2 through 4.





Congrats!

You've completed your sewing adventure

**SHARE
YOUR** LOOK



Post your pattern and tag us
[@simplicity_creative_group](#) and [#simplicitypatterns](#)
for a chance to be featured on our social media.

Look for more PDF patterns at [simplicity.com](https://www.simplicity.com)

Have a question or need help with your sewing project call us at
1-800-782-0323

McCall's
by **design**_{group}

McCall's ©2023 a division of IG Design Group Americas Inc. • Atlanta, GA 30342 USA www.thedesigngroup.com • All Rights Reserved. www.mccall.com • Made in the U.S.A. Fabriqué aux États-Unis.
To be used for individual private home use only and not for commercial or manufacturing purposes. • A usage privé seulement et non à des fins commerciales ou de production en série. • Para uso privado solamente, no se puede utilizar con propósitos de comercialización o de producción en serie.