

McCall's[®] by design_{group} M8287



>> MISSES' TOPS
SKILL LEVEL: EASY



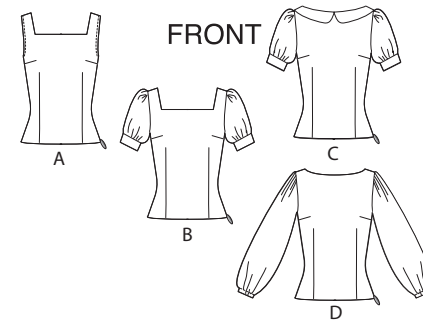
PDF PATTERNS

THINGS YOU NEED:

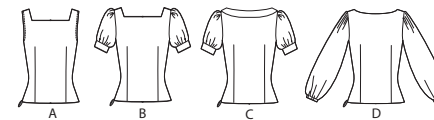
> **A,B,C,D:** One 13" (33cm) invisible zipper. **Also for A:** One pkg. of 1/2" (1.3cm) wide double fold bias tape. **Also for D:** 7/8 yd. (0.8m) of 3/8" (1cm) wide elastic.

SUGGESTED FABRICS:

> Gingham, Cotton Blends, Linen, Sateen. **Interfacing:** Lightweight Fusible.



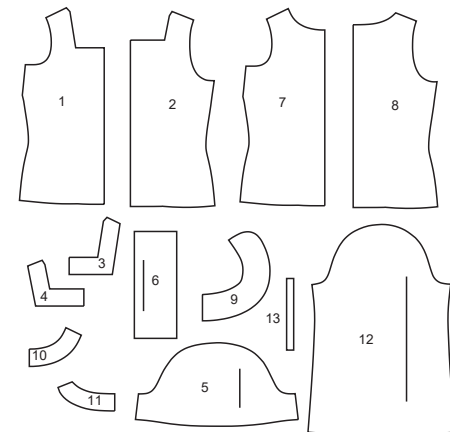
BACK



Your printed tile pieces should be assembled before you move on to this step!

PIECES (13)

- 1 FRONT A, B
- 2 BACK A, B
- 3 FRONT NECK FACING A, B
- 4 BACK NECK FACING A, B
- 5 SLEEVE B, C
- 6 SLEEVE BAND B, C
- 7 FRONT C, D
- 8 BACK C, D
- 9 COLLAR C
- 10 FRONT NECK FACING C, D
- 11 BACK NECK FACING C, D
- 12 SLEEVE D
- 13 GUIDE FOR ELASTIC D



YARDAGE CHARTS

SIZES	6	8	10	12	14	16	18	20	22	24	
TOP A											
45"*	1½	1½	1½	1½	1½	1½	1⅝	1⅝	1⅝	1⅝	yds.
60"*	⅞	⅞	⅞	⅞	1	1	1	1⅝	1⅝	1⅝	"
115cm*	1.4	1.4	1.4	1.4	1.4	1.4	1.4	1.5	1.5	1.5	m.
150cm*	0.7	0.7	0.8	0.8	1.0	1.0	1.0	1.0	1.0	1.1	"
INTERFACING- 20" (51cm)- ½ yd. (0.5m.)											
TOP B											
45"*	2	2	2	2	2	2⅝	2⅝	2⅝	2⅝	2⅝	yds.
60"*	1¼	1⅜	1⅜	1⅜	1⅜	1⅜	1⅜	1½	1½	1⅝	"
115cm*	1.9	1.9	1.9	1.9	1.9	1.9	2.0	2.0	2.0	2.0	m.
150cm*	1.2	1.2	1.2	1.3	1.3	1.3	1.3	1.4	1.4	1.4	"
INTERFACING- 20" (51cm)- ⅞ yd. (0.8m.)											
TOP C											
45"*	1¾	1¾	1¾	1¾	1¾	1⅞	2⅜	2⅜	2⅜	2⅜	yds.
60"*	1½	1½	1½	1½	1½	1½	1⅝	1⅝	1⅝	1⅝	"
115cm*	1.5	1.6	1.6	1.6	1.6	1.8	2.2	2.2	2.2	2.2	m.
150cm*	1.4	1.4	1.4	1.4	1.4	1.4	1.4	1.5	1.5	1.5	"
INTERFACING- 20" (51cm)- ⅞ yd. (0.8m.)											
TOP D											
45"*	2⅝	2¼	2¼	2¼	2¼	2⅜	2⅜	2½	2⅞	2⅞	yds.
60"*	1⅝	1⅝	1⅝	1⅝	1⅝	1⅝	1⅝	1⅝	1¾	1¾	"
115cm*	2.0	2.0	2.1	2.1	2.1	2.2	2.2	2.3	2.7	2.7	m.
150cm*	1.5	1.5	1.5	1.5	1.5	1.5	1.5	1.5	1.5	1.6	"
INTERFACING- 20" (51cm)- ⅜ yd. (0.4m.)											

FINISHED GARMENT MEASUREMENTS

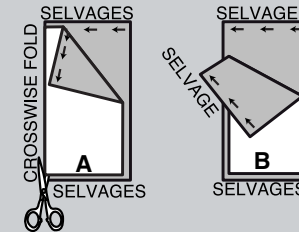
SIZES	6	8	10	12	14	16	18	20	22	24	
A,B,C,D BUST	35	36	37	38½	40½	42½	44½	46½	48½	50½	in.
	89	92	94	98	103	108	113	118	123	128	cm.
A,B,C,D WAIST	26½	27½	28½	30	32	34	36	38	40	42	in.
	67	70	72	76	80	86	91	96	101	106	cm.
WIDTH, LOWER EDGE											
TOP A,B	35½	36½	37½	39	41	43	45	47	49	51	ins.
	90	92½	95	99	104	110	115	120	125	130	cm.
TOP C,D	34	35	36	37½	39½	41½	43½	45½	47½	49½	ins.
	86.5	89	91.5	95	100.5	106	111	116	121	126	cm.
BACK LENGTH FROM BASE OF NECK											
TOP A,B,C,D	21½	21¾	22	22¼	22½	22¾	23	23¼	23½	23¾	in.
	54.5	55	56	56.5	57	58	58.5	59	59.5	60.5	cm.

BODY MEASUREMENTS

SIZES	6	8	10	12	14	16	18	20	22	24	
BUST	30½	31½	32½	34	36	38	40	42	44	46	in.
	78	80	83	87	92	97	102	107	112	117	cm.
WAIST	23	24	25	26½	28	30	32	34	37	39	in.
	58	61	64	67	71	76	81	87	94	99	cm.
HIP	32½	33½	34½	36	38	40	42	44	46	48	in.
	83	85	88	92	97	102	107	112	117	122	cm.
BACK WAIST LENGTH	15½	15¾	16	16¼	16½	16¾	17	17¼	17½	17¾	in.
	39.5	40	40.5	41.5	42	42.5	43	44	44.5	45	cm.

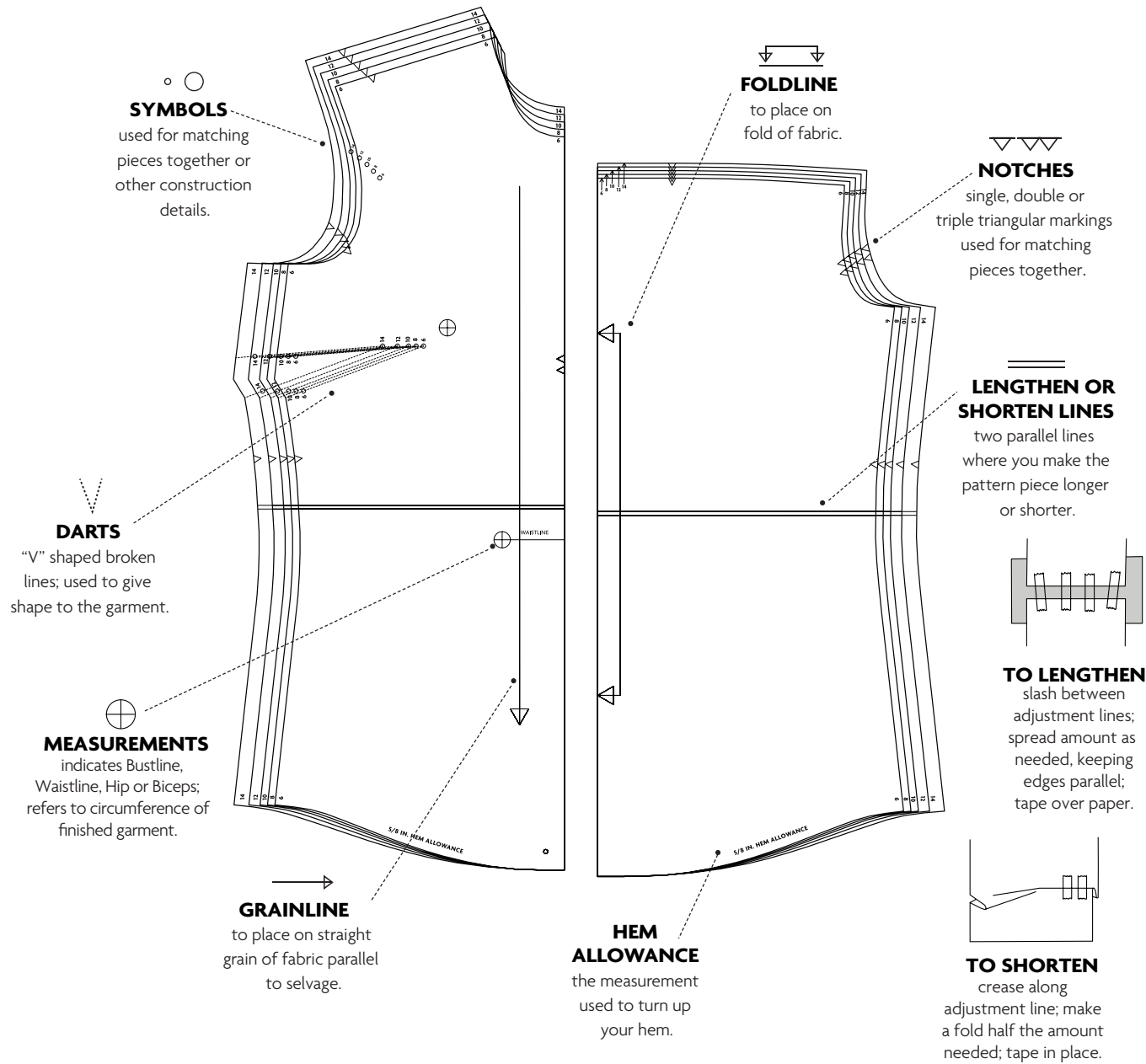
CUTTING AND MARKING

- > **SHRINK FABRIC** if not labeled pre-shrunk. Press.
- > **CIRCLE LAYOUT** for View, Size, Fabric Width.
- > Use **WITH NAP** layout for fabrics with one-way designs, nap, pile or surface shading. Because most knits have surface shading, a with nap layout is used.
- > For **DOUBLE THICKNESS (WITH FOLD)**, fold fabric with right sides together.
- > ***DOUBLE THICKNESS (WITHOUT FOLD)**, for fabrics with nap, fold fabric crosswise, right sides together. Mark as shown. Cut along crosswise fold of fabric (A). Turn upper layer 180° so arrows go in same direction and place over lower layer, right sides together (B).
- > For **SINGLE THICKNESS**, place fabric right side up. (For Fur Pile fabrics, place pile side down.)



- > Before **CUTTING**, place all pieces on fabric according to layout. Pin.
(Layouts show approximate position of pattern pieces; position may vary according to your pattern size.)
 - > ★ Cut other pieces first, allowing enough fabric to cut this piece. Open fabric. Cut piece on single layer of fabric with piece face up on right side of fabric.
 - > Cut accurately, cutting notches outward.
 - > Before removing pattern, **TRANSFER MARKINGS** and lines of construction to **WRONG SIDE** of fabric, using Pin and Chalk Pencil method or Tracing Paper and Dressmaker Wheel. Markings needed on right side of fabric should be thread traced.
- NOTE:** Broken-line boxes (a! b! c!) in layouts represent pieces cut by measurements provided.
- > Prewash your fabric using a method that's suitable for the fabric type.
 - > Fold fabric with right sides together, matching **SELVAGES**.
 - > Pin your pattern pieces to the fabric as shown below and cut them out using a sharp pair of dressmaker's shears.

PATTERN MARKINGS

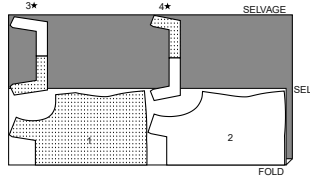


CUTTING LAYOUTS

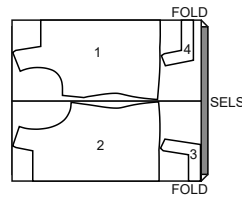
TOP A

use pieces: 1,2,3,4

45" (115 cm)
with nap
all sizes



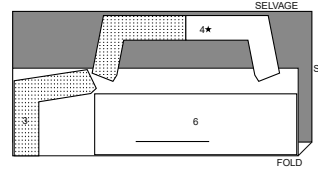
60" (150 cm)
with nap
all sizes



INTERFACING B

use pieces: 3,4,6

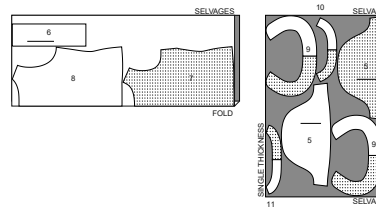
20" (51 cm)
all sizes



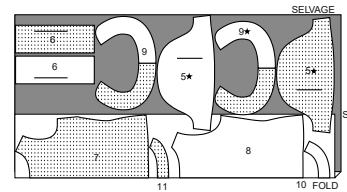
TOP C

use pieces: 5,6,7,8,9,10,11

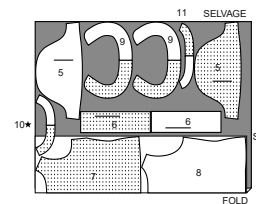
45" (115 cm)
with nap
sizes 6-8-10-12-
14-16



45" (115 cm)
with nap
sizes 18-20-22-24



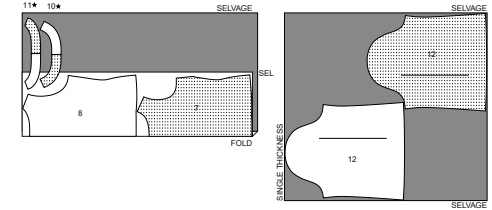
60" (150 cm)
with nap
all sizes



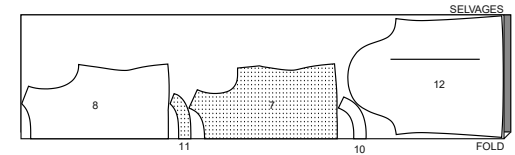
TOP D

use pieces: 7,8,10,11,12

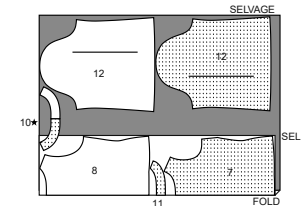
45" (115 cm)
with nap
sizes 6-8-10-12-14-16-18-20



45" (115 cm)
with nap
sizes 22-24



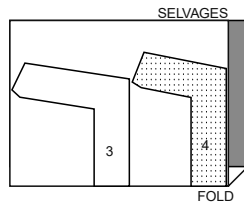
60" (150 cm)
with nap
all sizes



INTERFACING A

use pieces: 3,4

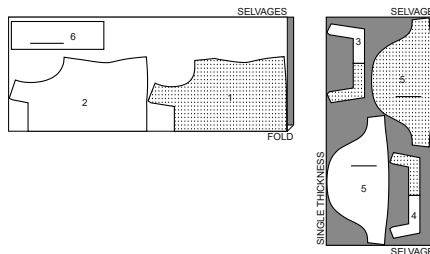
20" (51 cm)
all sizes



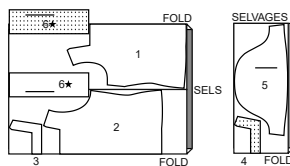
TOP B

use pieces: 1,2,3,4,5,6

45" (115 cm)
with nap
all sizes



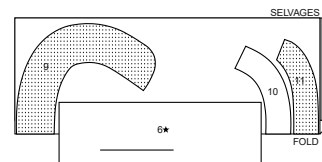
60" (150 cm)
with nap
all sizes



INTERFACING C

use pieces: 6,9,10,11

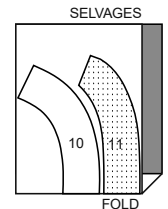
20" (51 cm)
all sizes



INTERFACING D

use pieces: 10,11

20" (51 cm)
all sizes



PATTERN PIECES WILL BE IDENTIFIED BY NUMBERS THE FIRST TIME THEY ARE USED.

SEWING INFORMATION

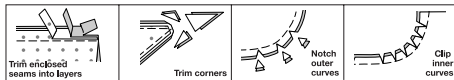
5/8" (1.5cm) SEAM ALLOWANCES ARE INCLUDED,
(unless otherwise indicated)

ILLUSTRATION SHADING KEY

Right Side	Wrong Side	Interfacing	Lining	Underlining

Pin or baste seams, right side together, matching notches. Fit garment before stitching major seams.

Press seam allowances flat; then open unless otherwise stated. Clip where necessary so they lie flat.



GLOSSARY

Sewing terms appearing in **BOLD TYPE** in Sewing Instructions are explained below.

BLINDSTITCH - Turn edge down about 1/4" (6mm); make a small diagonal stitch by picking up one thread of garment, then one thread of hem or facing.

EDGESTITCH - Stitch close to finished edge or seam.

FINISH - Stitch 1/4" (6mm) from raw edge and finish with one of the following: (1) Pink OR (2) Overcast OR (3) Turn in along stitching and stitch close to fold OR (4) Overlock.

OPTIONAL FOR HEMS: Apply Seam Binding.

GATHER - Stitch along seamline and again 1/4" (6mm) away in seam allowance, using long machine stitches. Pull thread ends when adjusting to fit.

SLIPSTITCH - Slide needle through a folded edge, then pick up a thread of underneath fabric.

STAYSTITCH - Stitch 1/8" (3mm) from seamline in seam allowance (usually 1/2" (1.3cm) from raw edge).

UNDERSTITCH - Open out facing or underside of garment; stitch to seam allowance close to seam.

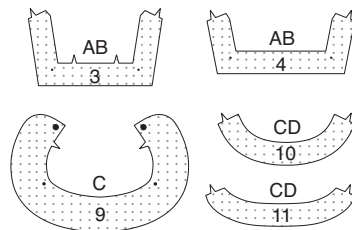
SEWING DIRECTIONS

TOP A, B, C, D

NOTE: Under each sub-heading, the first View will be illustrated unless otherwise indicated.

Interfacing

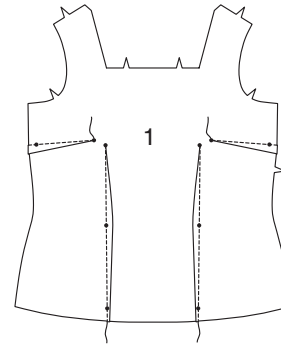
1. Pin **INTERFACING** to wrong side of each matching **FABRIC** section. Fuse, following manufacturer's instructions.



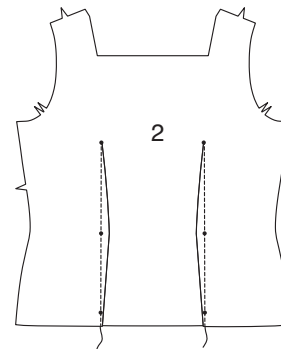
Front and Back

Views A, B

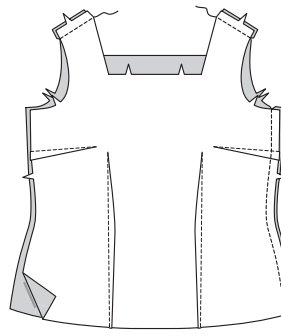
2. Stitch darts in Front (1). Press bust darts down and remaining darts toward center.



3. Stitch darts in Back (2). Press toward center.

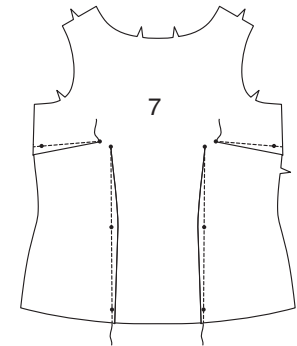


4. Stitch front to back at shoulders and right side.

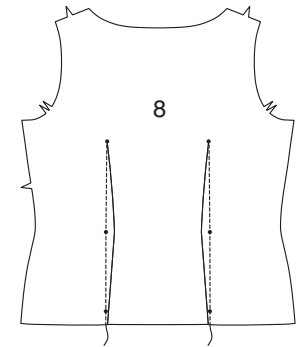


Views C, D

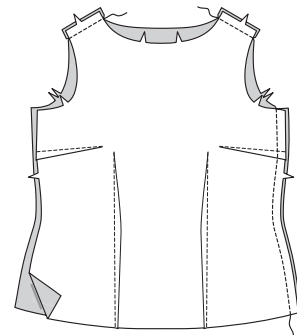
5. Stitch darts in Front (7). Press bust darts down and remaining darts toward center.



6. Stitch darts in Back (8). Press toward center.



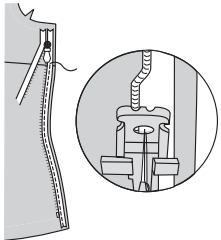
7. Stitch front to back at shoulders and right side.



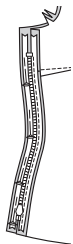
Zipper

NOTE: Use special invisible zipper foot when stitching invisible zipper. Zipper opens from lower edge and will be stitched from the lower edge up.

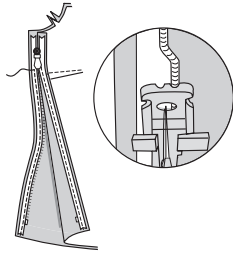
8. Open zipper. On outside, pin zipper to front opening edge, face down in seam allowance, placing upper zipper stop 1" (2.5cm) above lower edge and zipper teeth on seamline. Position right-hand groove of zipper foot over teeth; stitch close to teeth, ending at large dot.



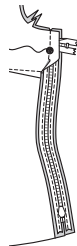
9. Close zipper. Pin remaining zipper tape to left back opening edge, placing zipper teeth on seamline.



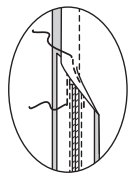
10. Open zipper. Position left-hand groove of zipper foot over teeth; stitch to large dot.



11. Close zipper. Slide zipper foot to the right. Pin front and back sections together above large dot. Position and lower needle slightly above and to the right of zipper stitching at large dot. Stitch side seam above large dot.



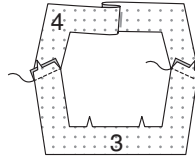
12. Stitch or hand sew each end of zipper tape to seam allowances, keeping front and back free when stitching.



Neck Facing

Views A, B

13. Stitch Front Neck Facing (3) to Back Neck Facing (4) at shoulders.



14. FINISH outer edges of facing.



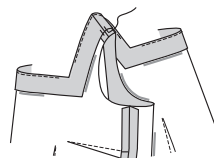
15. Pin facing to neck edge of top. Stitch, pivoting at small dots. Clip to small dots. Trim.



16. UNDERSTITCH facing as far as possible.

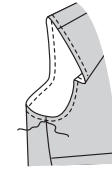


17. Turn facing to inside; press. Tack at seams.



View A

18. STAYSTITCH armhole edge of top.



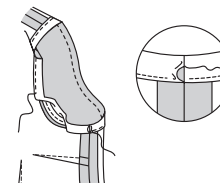
19. Open out one folded edge of bias tape; press lightly.



20. Pin bias tape to armhole edge, placing crease along seamline, turning in ends to meet at underarm seam, as shown. Stitch along crease. Trim top seam allowance even with bias tape.

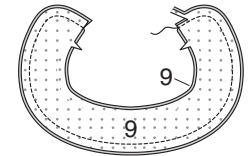


21. Turn bias tape to inside along seam. Press. **SLIPSTITCH** ends. Baste in place. Stitch close to basted edge.

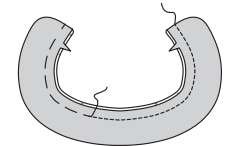


View C

22. Pin Collar (9) sections together. Stitch, leaving neck edge open. Trim.



23. Turn collar; press. Baste raw edges together. **STAYSTITCH** neck edge.

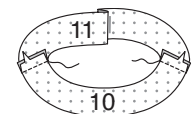


24. Pin collar, interfaced side down to neck edge of top, matching large dot to center front and small dots to shoulder seams, clipping collar where necessary. Baste.

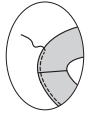


Views C, D

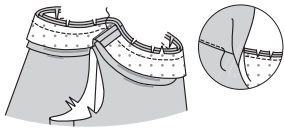
25. Pin Front Neck Facing (10) to Back Neck Facing (11) at shoulders. Stitch.



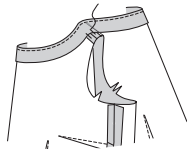
26. FINISH outer edge of facing.



27. Pin facing to neck edge of top, matching centers. Stitch. Trim. **UNDERSTITCH** facing.



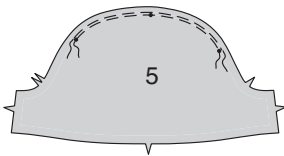
28. Turn facing to inside; press. Tack at seams.



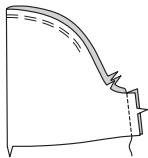
Sleeve

Views B, C

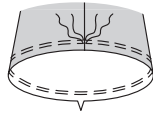
29. GATHER upper edge of Sleeve (5) between lower small dots.



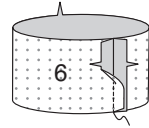
30. Stitch sleeve seam.



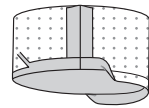
31. GATHER lower edge of sleeve.



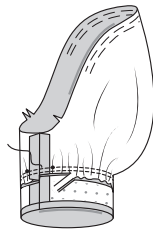
32. Stitch ends of Sleeve Band (6) together.



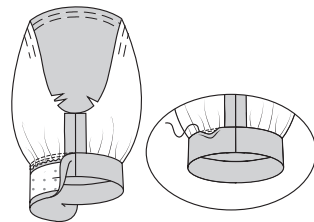
33. Turn in seam allowance on unnotched edge of sleeve band; press. Trim pressed seam allowance to 3/8" (1cm).



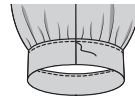
34. Pin band to lower edge of sleeve, matching seams. Adjust gathers; baste. Stitch. Trim. Press seam toward band.



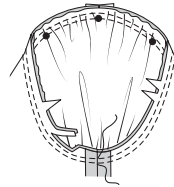
35. Turn band to inside along foldline. **SLIPSTITCH** pressed edge over seam. Press.



36. EDGESTITCH upper edge of sleeve band.

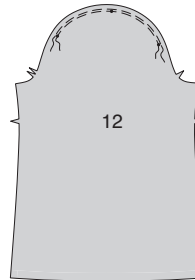


37. With right sides together, pin sleeve into armhole, placing middle dot to shoulder seam. Adjust gathers; baste. Stitch. Stitch again 1/4" (6mm) in seam allowance. Trim close to stitching. Press seam allowances flat. Turn seam toward sleeve.

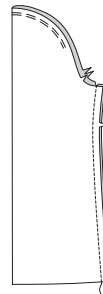


View D

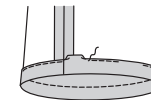
38. GATHER upper edge of Sleeve (12) between lower small dots.



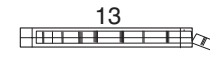
39. Stitch sleeve seam.



40. To form casing, turn lower edge of sleeve to inside along foldline, turning in 1/4" (6mm) on raw edge. Stitch, leaving an opening.



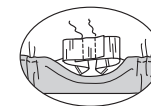
41. For each sleeve, cut one piece of elastic, the length of Guide For Elastic (13).



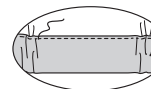
42. Insert elastic through opening in casing, lapping ends. Hold with safety pin. Try on; adjust if necessary.



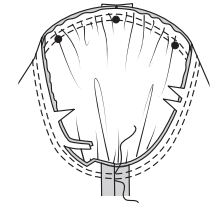
43. Stitch ends securely.



44. Stitch opening in casing, stretching elastic while stitching.

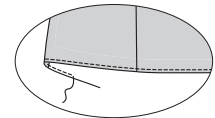


45. With right sides together, pin sleeve into armhole, placing middle dot to shoulder seam. Adjust gathers; baste. Stitch. Stitch again 1/4" (6mm) away in seam allowance. Trim close to stitching. Press seam allowances flat. Turn seam toward sleeve.

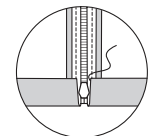


Hem

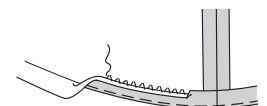
46. FINISH lower edge of top.



47. Turn up hem, turning in opening edges to clear zipper teeth. Press. **SLIPSTITCH** to zipper tape.



48. Turn up hem; baste close to fold. Press. **BLINDSTITCH** hem in place, easing in fullness as necessary.





Congrats!


You've completed your sewing adventure!

**SHARE
YOUR** look!



Post your pattern and tag us at
@MCCALLPATTERNCOMPANY and use #mccallpatterns
for a chance to be featured on our social media!

Look for more McCall's PDF patterns at **McCallPattern.com**

 1-800-255-2762

© 2022 IG Design Group Americas, Inc. | All Rights Reserved
Sold for individual home use only and not for commercial or manufacturing purposes.