

McCall's[®] by design_{group} M8285



>> MISSES' TOP AND DRESSES
SKILL LEVEL: EASY



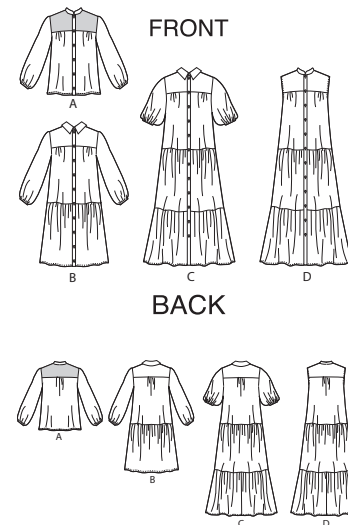
THINGS YOU NEED:

- > **A:** Six 5/8" (1.5cm) buttons, 7/8 yd. (0.8m) of 3/8" (1cm) wide elastic.
- B:** Ten 5/8" (1.5cm) buttons, 7/8 yd. (0.8m) of 3/8" (1cm) wide elastic.
- C,D:** Twelve 5/8" (1.5cm) buttons. **Also for C:** 1 yd. (1.0m) of 3/8" (1cm) wide elastic. **Also for D:** One pkg. of 1/2" (1.3cm) wide single fold bias tape.

SUGGESTED FABRICS:

- > Cotton Blends, Lawn, Eyelet, Gauze. **Contrast A:** Lace.

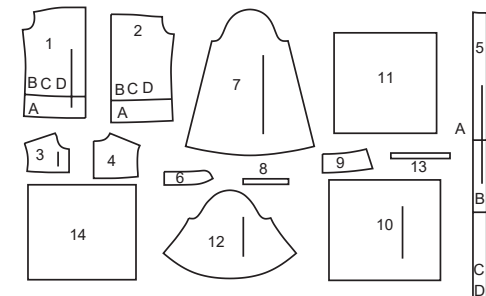
Interfacing: Lightweight Fusible.



Your printed tile pieces should be assembled before you move on to this step!

PIECES (14)

- 1 FRONT A,B,C,D
- 2 BACK A,B,C,D
- 3 YOKE FRONT A,B,C,D
- 4 YOKE BACK A,B,C,D
- 5 FRONT BAND A,B,C,D
- 6 COLLAR BAND A,B,C,D
- 7 SLEEVE A,B
- 8 GUIDE FOR ELASTIC A,B
- 9 COLLAR B,C
- 10 SKIRT FRONT B,C,D
- 11 SKIRT BACK B,C,D
- 12 SLEEVE C
- 13 GUIDE FOR ELASTIC C
- 14 LOWER RUFFLE C,D



YARDAGE CHARTS

SIZES	XS	S	M	L	XL	XXL	
	(4-6)	(8-10)	(12-14)	(16-18)	(20-22)	(24-26)	
TOP A							
45"*	2	2½	2½	2¼	2¾	2¾	yds.
60"*	1½	1½	1½	1¾	2½	2½	"
115cm*	1.9	2.0	2.0	2.0	2.1	2.2	m.
150cm*	1.4	1.4	1.4	1.5	2.0	2.0	"
CONTRAST (FRONT AND BACK YOKE)							
45"*	¾	¾	¾	¾	¾	½	yds.
115cm*	0.4	0.4	0.4	0.4	0.4	0.4	m.
INTERFACING- 20" (51cm)- 7/8yd. (0.8m.)							
DRESS B							
45"*	¾	¾	¾	¾	¾	¾	yds.
60"*	2½	2½	2½	2¾	3	3	"
115cm*	3.0	3.1	3.2	3.8	3.8	3.8	m.
150cm*	2.2	2.3	2.4	2.6	2.7	2.8	"
INTERFACING- 20" (51cm)- 1¼ yds. (1.2m.)							
DRESS C							
45"*	5¼	5¼	5¾	5¾	5¾	5¾	yds.
60"*	4¾	4¼	4¼	4¾	4¾	4¾	"
115cm*	4.8	4.8	4.8	5.3	5.3	5.4	m.
150cm*	3.8	3.8	3.9	4.0	4.3	4.3	"
INTERFACING- 20" (51cm)- 1½ yds. (1.5m.)							
DRESS D							
45"*	4¾	4¾	4¾	4¾	4¾	4¾	yds.
60"*	3½	3¾	3¾	3¾	4	4	"
115cm*	4.2	4.3	4.3	4.5	4.5	4.5	m.
150cm*	3.2	3.5	3.5	3.6	3.7	3.7	"
INTERFACING- 20" (51cm)- 1½ yds. (1.5m.)							

FINISHED GARMENT MEASUREMENTS

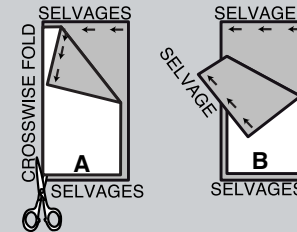
SIZES	XS	S	M	L	XL	XXL	
	(4-6)	(8-10)	(12-14)	(16-18)	(20-22)	(24-26)	
A,B,C,D BUST	41	43	46½	50½	54½	58½	ins.
	104	109	118	128	138	148	cm.
A,B,C,D WAIST	39	41	44½	48½	52½	56½	ins.
	99	104	113	123	133	143	cm.
WIDTH, LOWER EDGE							
TOP A	38	42	46	50	54	58	ins.
	96.5	107	117	127	138	148	cm.
DRESS B	70	74	78	82	86	90	ins.
	178	188	199	209	219	229	cm.
BACK LENGTH FROM BASE OF NECK							
TOP A	23½	24	24½	25	25½	26	ins.
	59.5	61	62	63.5	65	66	cm.
DRESS B	40½	41	41½	42	42½	43	ins.
	103	104	106	107	108	110	cm.
DRESS C,D	56½	57	57½	58	58½	59	ins.
	144	145	146	148	149	150	cm.

BODY MEASUREMENTS

SIZES	XS	S	M	L	XL	XXL	
	(4-6)	(8-10)	(12-14)	(16-18)	(20-22)	(24-26)	
BUST	29½-30½	31½-32½	34-36	38-40	42-44	46-48	ins.
	75-77	80-83	87-92	97-102	107-112	117-122	cm.
WAIST	22-23	24-25	26½-28	30-32	34-37	39-41½	ins.
	56-58	61-64	67-71	76-81	87-94	99-105	cm.
HIP	31½-32½	33½-34½	36-38	40-42	44-46	48-50	ins.
	80-83	85-88	92-97	102-107	112-117	122-127	cm.
BACK WAIST LENGTH	15¼-15½	15¾-16	16¼-16½	16¾-17	17¼-17½	17¾-18	ins.
	39-39.5	40-40.5	41.5-42	42.5-43	44-44.5	45-45.5	cm.

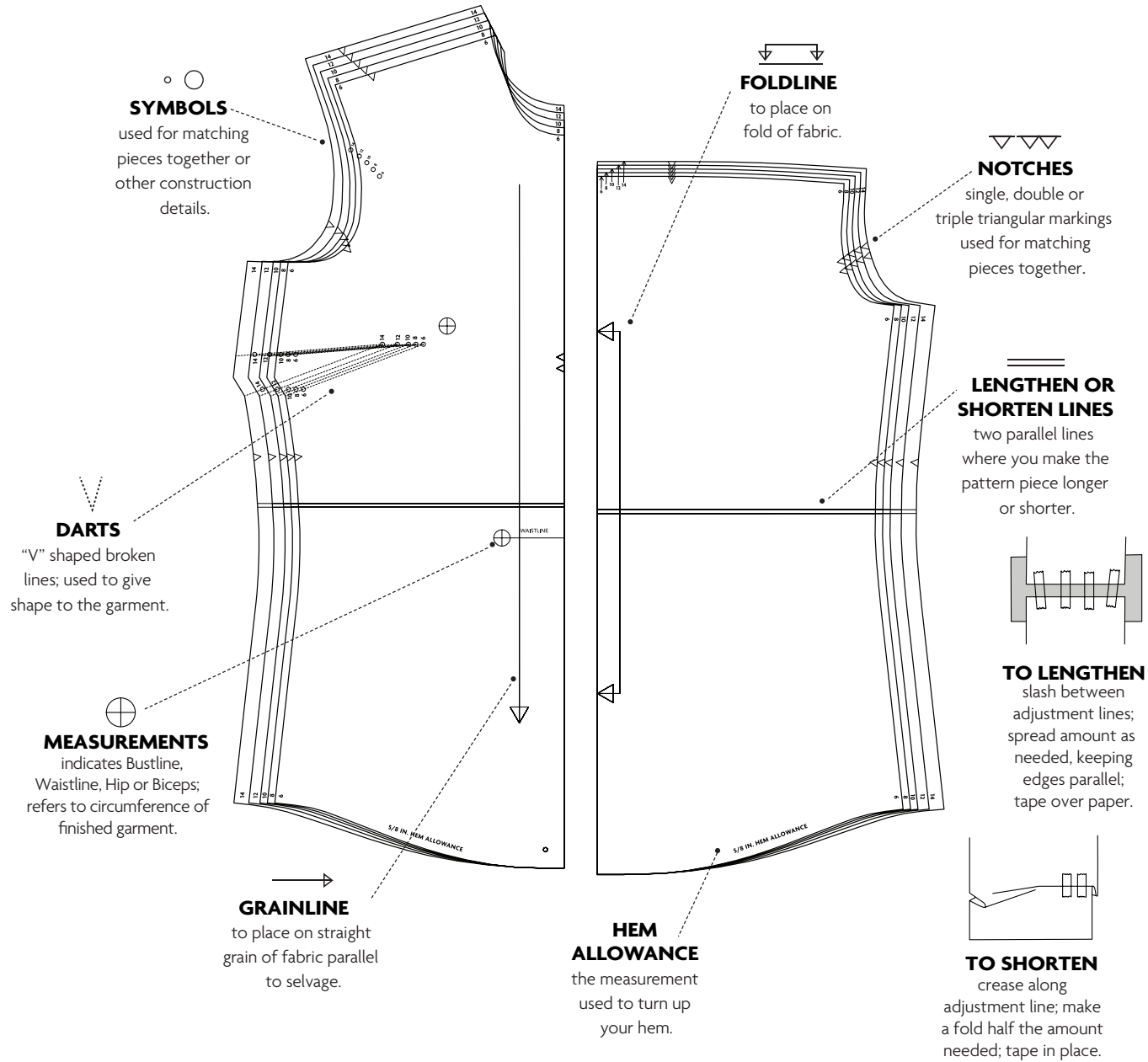
CUTTING AND MARKING

- > **SHRINK FABRIC** if not labeled pre-shrunk. Press.
- > **CIRCLE LAYOUT** for View, Size, Fabric Width.
- > Use **WITH NAP** layout for fabrics with one-way designs, nap, pile or surface shading. Because most knits have surface shading, a with nap layout is used.
- > For **DOUBLE THICKNESS (WITH FOLD)**, fold fabric with right sides together.
- > ***DOUBLE THICKNESS (WITHOUT FOLD)**, for fabrics with nap, fold fabric crosswise, right sides together. Mark as shown. Cut along crosswise fold of fabric (A). Turn upper layer 180° so arrows go in same direction and place over lower layer, right sides together (B).
- > For **SINGLE THICKNESS**, place fabric right side up. (For Fur Pile fabrics, place pile side down.)



- > Before **CUTTING**, place all pieces on fabric according to layout. Pin.
(Layouts show approximate position of pattern pieces; position may vary according to your pattern size.)
 - > ★ Cut other pieces first, allowing enough fabric to cut this piece. Open fabric. Cut piece on single layer of fabric with piece face up on right side of fabric.
 - > Cut accurately, cutting notches outward.
 - > Before removing pattern, **TRANSFER MARKINGS** and lines of construction to **WRONG SIDE** of fabric, using Pin and Chalk Pencil method or Tracing Paper and Dressmaker Wheel. Markings needed on right side of fabric should be thread traced.
- NOTE:** Broken-line boxes (a! b! c!) in layouts represent pieces cut by measurements provided.
- > Prewash your fabric using a method that's suitable for the fabric type.
 - > Fold fabric with right sides together, matching **SELVAGES**.
 - > Pin your pattern pieces to the fabric as shown below and cut them out using a sharp pair of dressmaker's shears.

PATTERN MARKINGS

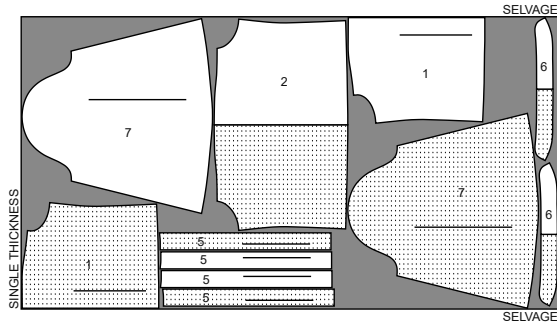


CUTTING LAYOUTS

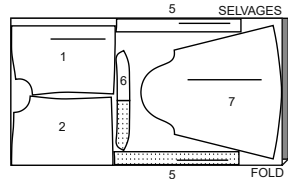
TOP A

use pieces: 1,2,5,6,7

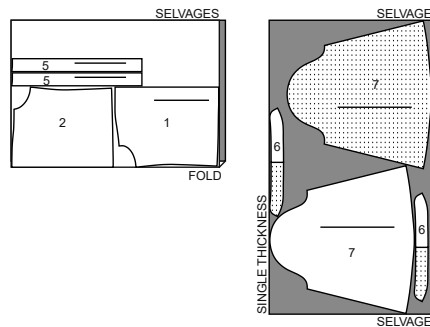
45" (115 cm)
with nap
all sizes



60" (150 cm)
with nap
sizes XS-S-M-L



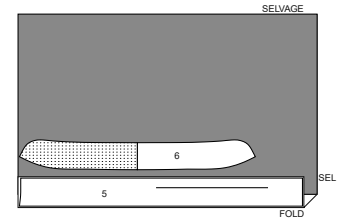
60" (150 cm)
with nap
sizes XL-XXL



INTERFACING A

use pieces: 5,6

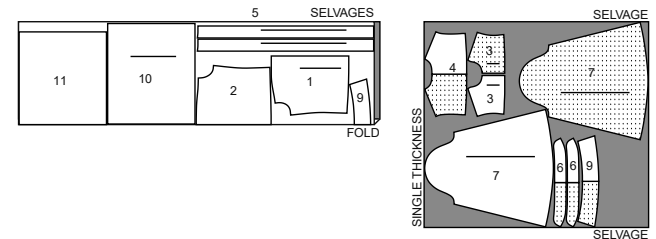
20" (51 cm)
all sizes



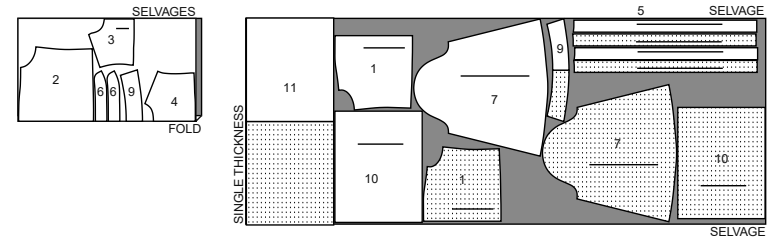
DRESS B

use pieces: 1,2,3,4,5,6,7,9,10,11

45" (115 cm)
with nap
sizes XS-S-M



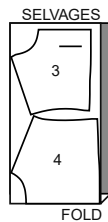
45" (115 cm)
with nap
sizes L-XL-XXL



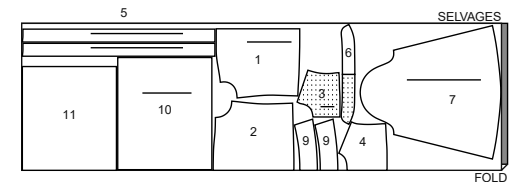
CONTRAST A (FRONT AND BACK YOKE)

use pieces: 3,4

45" to 60" (115 cm to 150 cm)
with nap
all sizes

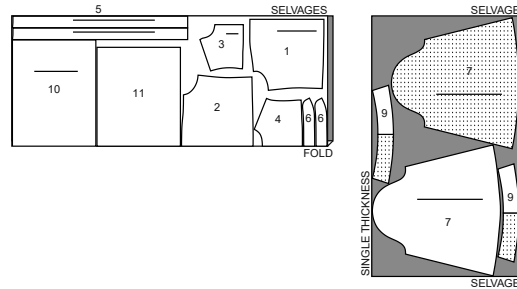


60" (150 cm)
with nap
sizes XS-S-M-L



CUTTING LAYOUTS CONTINUED

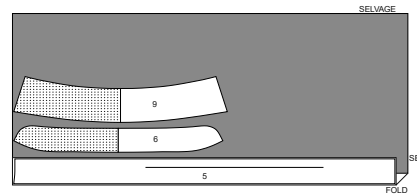
60" (150 cm)
with nap
sizes XL-XXL



INTERFACING B

use pieces: 5,6,9

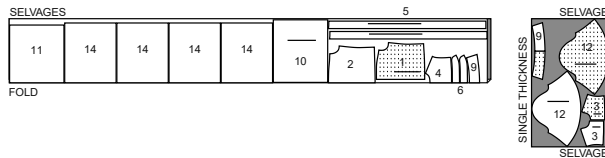
20" (51 cm)
all sizes



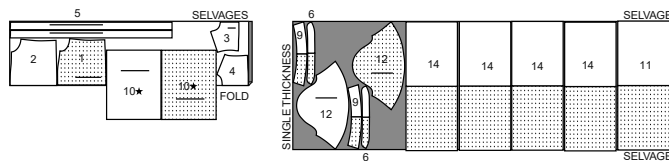
DRESS C

use pieces: 1,2,3,4,5,6,9,10,11,12,14

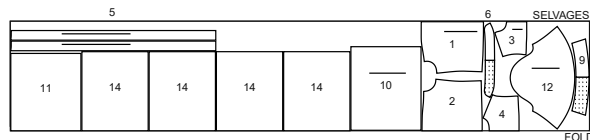
45" (115 cm)
with nap
sizes XS-S-M



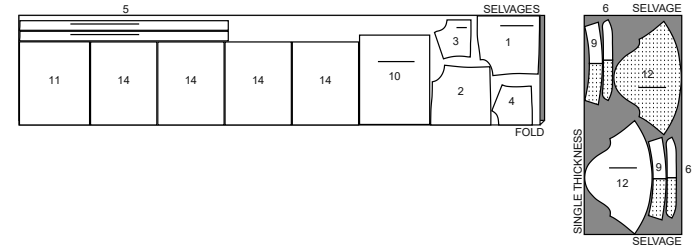
45" (115 cm)
with nap
sizes L-XL-XXL



60" (150 cm)
with nap
sizes XS-S-M-L



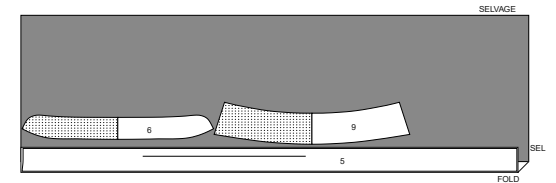
60" (150 cm)
with nap
sizes XL-XXL



INTERFACING C

use pieces: 5,6,9

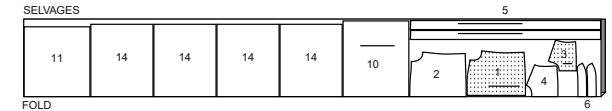
20" (51 cm)
all sizes



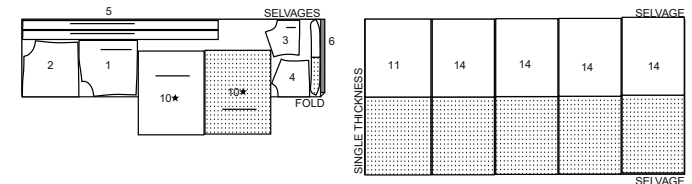
DRESS D

use pieces: 1,2,3,4,5,6,10,11,14

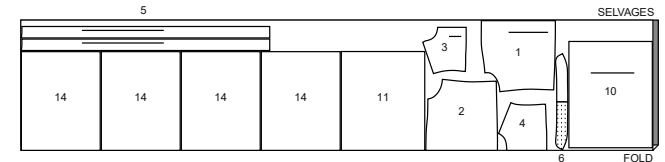
45" (115 cm)
with nap
sizes XS-S-M



45" (115 cm)
with nap
sizes L-XL-XXL



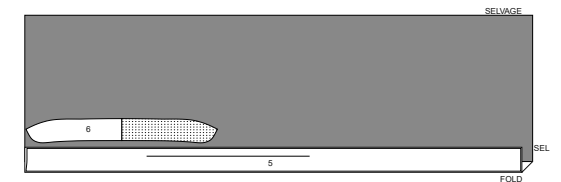
60" (150 cm)
with nap
all sizes



INTERFACING D

use pieces: 5,6

20" (51 cm)
all sizes



PATTERN PIECES WILL BE IDENTIFIED BY NUMBERS THE FIRST TIME THEY ARE USED.

SEWING INFORMATION

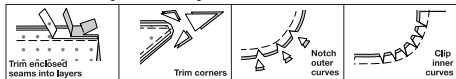
5/8" (1.5cm) SEAM ALLOWANCES ARE INCLUDED,
(unless otherwise indicated)

ILLUSTRATION SHADING KEY

Right Side	Wrong Side	Interfacing	Lining	Underlining

Pin or baste seams, right side together, matching notches. Fit garment before stitching major seams.

Press seam allowances flat; then open unless otherwise stated. Clip where necessary so they lie flat.



GLOSSARY

Sewing terms appearing in **BOLD TYPE** in Sewing Instructions are explained below.

EASESTITCH - Stitch along seamline, using long machine stitches. Pull thread ends when adjusting to fit.

NOTE: For sleeve caps, make a second row of long machine stitches 1/4" (6mm) away in seam allowance. for more control.

EDGESTITCH - Stitch close to finished edge or seam.

GATHER - Stitch along seamline and again 1/4" (6mm) away in seam allowance, using long machine stitches. Pull thread ends when adjusting to fit.

NARROW HEM - Turn in hem; press, easing in fullness if necessary. Open out hem. Turn in again so raw edge is along crease; press. Turn in along crease; stitch.

SLIPSTITCH - Slide needle through a folded edge, then pick up a thread of underneath fabric.

STAYSTITCH - Stitch 1/8" (3mm) from seamline in seam allowance (usually 1/2" (1.3cm) from raw edge).

UNDERSTITCH - Open out facing or underside of garment; stitch to seam allowance close to seam.

Congratulations on purchasing a McCall's Sew Along Pattern. Please scan the QR code below to link to the Sew Along video for this pattern, hosted by Mimi G. This video features step by step instructions and helpful pattern insight. Enjoy!



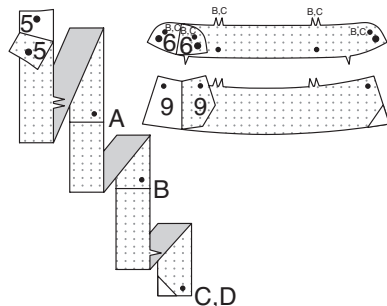
SEWING DIRECTIONS

TOP A, DRESS B, C, D

NOTE: Illustrated for **View A**, unless otherwise indicated.

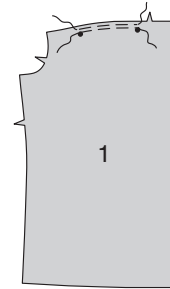
Interfacing

1. Trim corners of **INTERFACING**, as shown. Fuse interfacing to wrong side of each matching **FABRIC** section, following manufacturer's instructions.

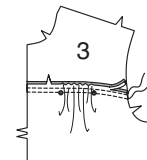


Front and Back

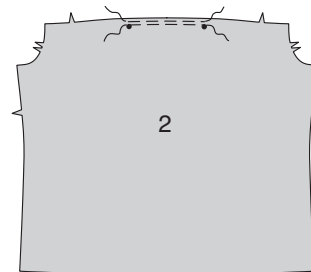
2. **GATHER** upper edge of **FRONT** (1) between small dots.



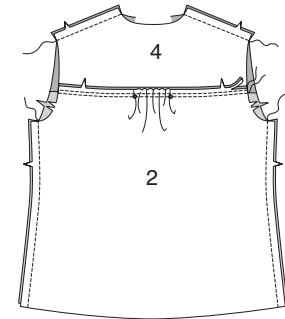
3. With right sides together, pin **YOKE FRONT** (3) to front, matching symbols. Adjust gathers; baste. Stitch. Stitch again 1/4" (6mm) away in seam allowance. Trim close to stitching. Press seam up.



4. **GATHER** upper edge of **BACK** (2) between small dots.

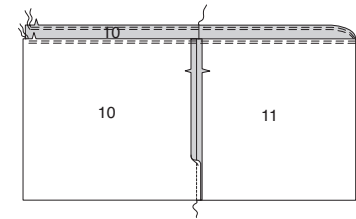


5. With right sides together, pin **YOKE BACK** (4) to back, matching symbols. Adjust gathers; baste. Stitch. Stitch again 1/4" (6mm) away in seam allowance. Trim close to stitching. Press seam up. Stitch front sections and back together at shoulders and sides.

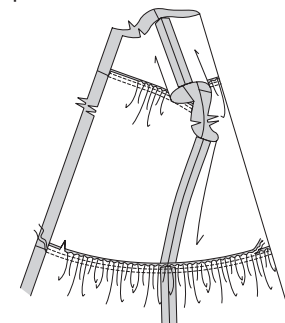


Views B, C, D:

6. Stitch **SKIRT FRONT** (10) and **SKIRT BACK** (11) at sides. **GATHER** upper edge of skirt between seamlines.



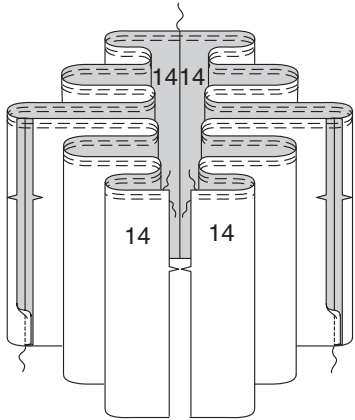
7. With right sides together, pin front and back to skirt, matching centers and seams. Adjust gathers; baste. Stitch. Stitch again 1/4" (6mm) away in seam allowance. Trim close to stitching. Press seam up.



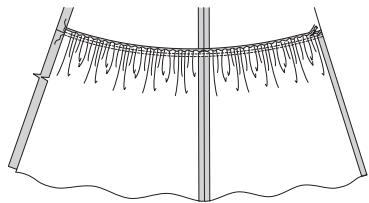
Views C, D:

8. Stitch ends of LOWER RUFFLE (14). For front, leaving one end open.

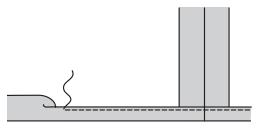
GATHER upper edge of ruffle between seamlines.



9. With right sides together, pin ruffle to garment, placing center seam at center back and remaining seams at sides. Adjust gathers; baste. Stitch. Stitch again 1/4" (6mm) away in seam allowance. Trim close to stitching. Press seam up.

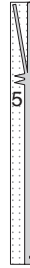


10. All Views: NARROW HEM lower edge.

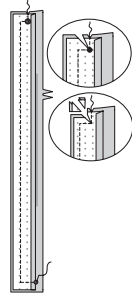


Front Band

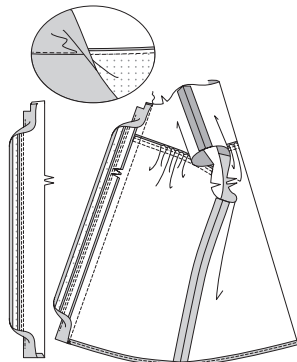
11. For facing, turn in seam allowance on notched edge of interfaced FRONT BAND (5); press. Trim pressed seam allowance to 3/8" (1cm).



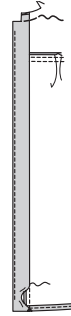
12. Pin facing to front band. Stitch upper edges, pivoting at large dot. Stitch unnotched edge and lower end. Clip to large dot, as shown. Trim.



13. UNDERSTITCH band facing. Turn band; press. Pin front band to front. Stitch, keeping facing free. Trim. Press seam toward front band.



14. SLIPSTITCH pressed edge of facing over seam. Baste upper edges.

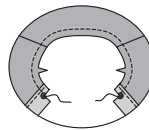


15. EDGESTITCH inner edge of band, as shown.



Collar and Collar Band

16. STAYSTITCH neck edge of garment, as shown.



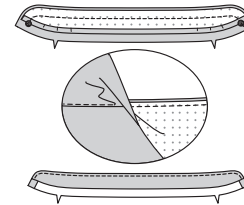
Views A, D:

17. Turn in seam allowance on single notched edge of interfaced COLLAR BAND (6), easing in fullness. Press. Trim pressed seam allowance to 3/8" (1cm).



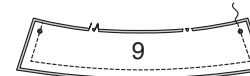
18. Stitch collar band sections together, leaving neck edge open. Trim.

For facing, **UNDERSTITCH** interfaced collar band. Turn. Press.



Views B, C:

19. Stitch COLLAR (9) sections together, leaving notched edge open. Trim.



20. Turn. Press. Baste raw edges together.



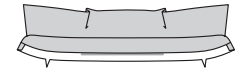
21. Turn in 5/8" (1.5cm) seam allowance on single notched edge of interfaced COLLAR BAND (6) section. Press, easing in fullness. Trim pressed seam allowance to 3/8" (1cm).



22. Pin uninterfaced side of collar to uninterfaced collar band between large dots. Pin interfaced collar band over collar; baste. Stitch, leaving neck edge open. Trim.



23. Turn. Press.

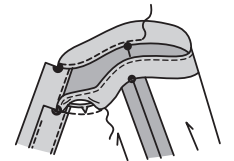


All Views:

24. Pin collar band to neck edge, clipping garment neck edge where necessary. Stitch, keeping pressed edge free. Trim. Press seam toward collar band.



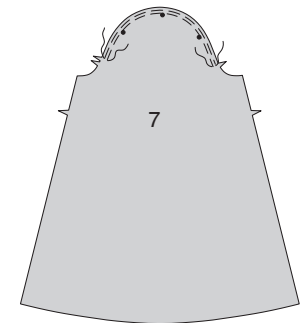
25. SLIPSTITCH pressed edge over seam. On outside, **EDGESTITCH** neck edge of collar band.



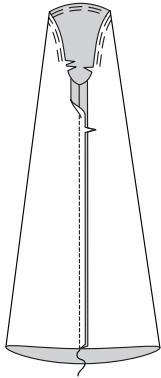
Armhole Finish

Views A, B:

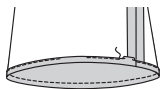
26. EASESTITCH upper edge of SLEEVE (7) between notches.



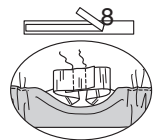
27. Stitch sleeve seam.



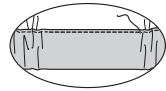
28. To form casing, turn lower edge of sleeve to inside on foldline. Turn under 1/4" (6mm) on raw edge; press. Stitch, leaving an opening to insert elastic.



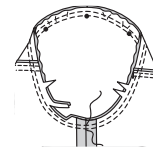
29. Cut two pieces of elastic, using GUIDE FOR ELASTIC (8). Insert elastic through casing. Lap ends; hold with safety pin. Try on and adjust if necessary. Stitch ends of elastic securely.



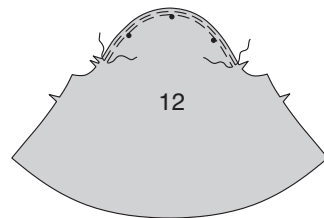
30. Stitch opening in casing, stretching elastic while stitching.



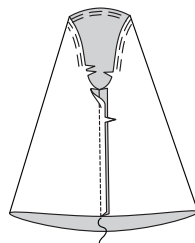
31. With right sides together, pin sleeve into armhole, placing center small dots at shoulder seam. Adjust ease; baste. Stitch. Stitch again 1/4" (6mm) away in seam allowance. Trim close to stitching. Press seam allowances flat. Turn seam toward sleeve.



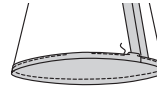
View C:
32. EASESTITCH upper edge of SLEEVE (12) between notches.



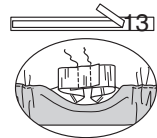
33. Stitch sleeve seam.



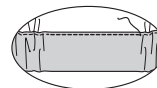
34. To form casing, turn lower edge of sleeve to inside on foldline. Turn under 1/4" (6mm) on raw edge; press. Stitch, leaving an opening to insert elastic.



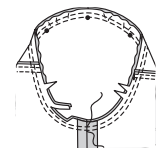
35. Cut two pieces of elastic, using GUIDE FOR ELASTIC (13). Insert elastic through casing. Lap ends; hold with safety pin. Try on and adjust if necessary. Stitch ends of elastic securely.



36. Stitch opening in casing, stretching elastic while stitching.



37. With right sides together, pin sleeve into armhole, placing center small dots at shoulder seam. Adjust ease; baste. Stitch. Stitch again 1/4" (6mm) away in seam allowance. Trim close to stitching. Press seam allowances flat. Turn seam toward sleeve.

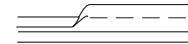


View D:

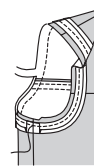
38. STAYSTITCH armhole edges of dress.



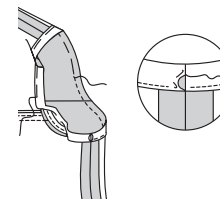
39. Open out one folded edge of bias tape; press out crease and preshape tape to match curve of armhole by pressing lightly.



40. Pin bias tape to armhole edge, placing crease along seamline, turning in ends to meet at side seam, as shown. Stitch along crease. Trim dress seam allowance even with bias tape.



41. Turn bias tape to inside along seam. Press. Baste in place. **SLIPSTITCH** ends. On outside, stitch close to basted edge.

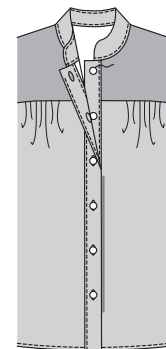


Finishing

42. Make buttonholes in right front band at markings.



43. Lap opening edges, matching centers. Using buttonholes as guides, make button markings on left front. Sew buttons at markings.





Congrats!


You've completed your sewing adventure!

**SHARE
YOUR** look!



Post your pattern and tag us at
@MCCALLPATTERNCOMPANY and use #mccallpatterns
for a chance to be featured on our social media!

Look for more McCall's PDF patterns at **McCallPattern.com**

 1-800-255-2762

© 2022 IG Design Group Americas, Inc. | All Rights Reserved
Sold for individual home use only and not for commercial or manufacturing purposes.