



>> CHILDREN'S AND GIRLS' DRESSES
SKILL LEVEL: VERY EASY

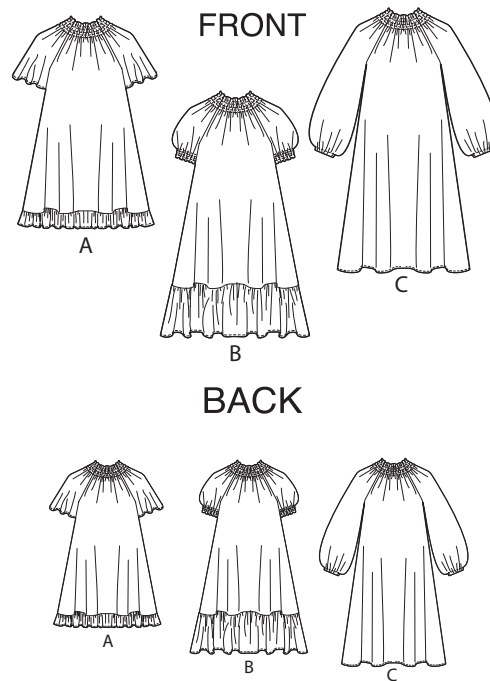


THINGS YOU NEED:

> **A,B,C:** Elastic thread. **Also for C:** 5/8 yd. (0.6m) of 3/8" (1cm) elastic.

SUGGESTED FABRICS:

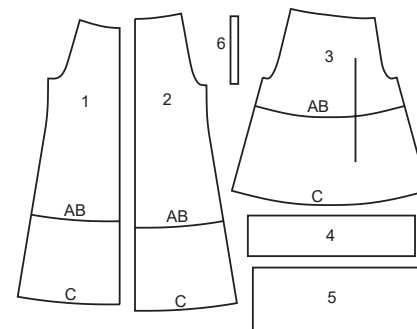
> Cotton Blends, Dotted Swiss, Lawn, Gingham.



Your printed tile pieces should be assembled before you move on to this step!

PIECES (6)

- 1 FRONT
- 2 BACK
- 3 SLEEVE
- 4 RUFFLE A
- 5 RUFFLE B
- 6 GUIDE FOR ELASTIC C



YARDAGE CHARTS

CHILDREN'S						GIRLS'				
SIZES	3	4	5	6	7	8	10	12	14	
DRESS A										
45"***	1¼	1¼	1⅜	1⅜	1½	1½	2	2⅞	2¼	yds.
60"***	1	1	1⅞	1⅞	1½	1⅞	1⅞	1¾	1¾	"
115cm***	1.2	1.2	1.3	1.3	1.4	1.4	1.9	2.0	2.1	m.
150cm***	1.0	1.0	1.0	1.1	1.4	1.4	1.5	1.6	1.6	"
DRESS B										
45"***	1½	1½	1⅝	1⅝	1⅞	2	2⅞	2¼	2⅜	yds.
60"***	1¼	1¼	1⅜	1⅜	1⅞	1¾	1¾	1⅞	2	"
115cm***	1.4	1.4	1.5	1.5	1.8	1.9	2.0	2.1	2.2	m.
150cm***	1.2	1.2	1.3	1.3	1.5	1.6	1.6	1.8	1.9	"
DRESS C										
45"***	1⅝	1¾	1⅞	2⅞	3	3⅜	3⅝	3⅞	4	yds.
60"***	1⅜	1½	1⅝	1⅝	1¾	1⅞	1⅞	2	2⅞	"
115cm***	1.5	1.6	1.8	1.9	2.8	3.1	3.4	3.6	3.7	m.
150cm***	1.3	1.4	1.4	1.5	1.6	1.6	1.8	1.9	2.0	"

FINISHED GARMENT MEASUREMENTS

CHILDREN'S						GIRLS'				
SIZES	3	4	5	6	7	8	10	12	14	
A,B,C CHEST	29	30	31	32	32	33	34½	36	38	in.
	73	76	78	81	81	84	87	91	96	cm.
A,B,C WAIST	29	30	31	32	30	31	32½	34	36	in.
	73	76	78	81	76	78	82	86	91	cm.

FINISHED GARMENT MEASUREMENTS

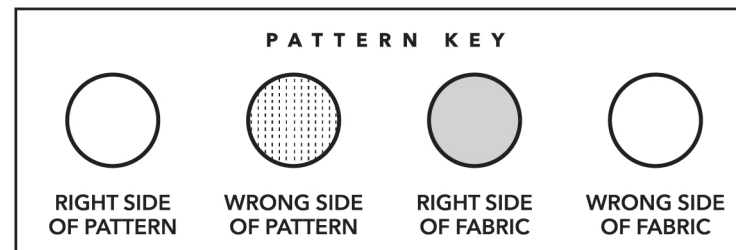
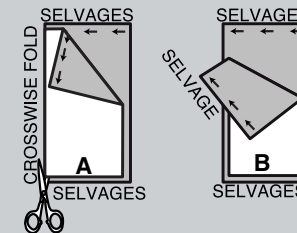
CHILDREN'S						GIRLS'				
SIZES	3	4	5	6	7	8	10	12	14	
WIDTH, LOWER EDGE										
DRESS A,B	69	70	71	72	81½	82½	84	85½	87½	ins.
	176	178	181	183	207	210	214	217	222	cm.
DRESS C	40	41	42	43	47½	48½	50	51½	53½	ins.
	102	104	107	110	121	123	127	131	136	cm.
BACK LENGTH FROM BASE OF NECK										
DRESS A	19¾	21	23	25	25	27	30	33	35½	in.
	50	53.5	58.5	63.5	63.5	68.5	76	84	90	cm.
DRESS B	23¾	25	27	29	28	30	33	36	38½	in.
	60.5	63.5	68.5	73.5	71	76	84	91.5	98	cm.
DRESS C	25¾	27	29	31	30	32	35	38	40½	in.
	65.5	68.5	73.5	78.5	76	81.5	89	96.5	103	cm.

BODY MEASUREMENTS

CHILDREN'S						GIRLS'				
SIZES	3	4	5	6	7	8	10	12	14	
CHEST	22	23	24	25	26	27	28½	30	32	in.
	56	58.5	61	63.5	66	68.5	72.5	76	81.5	cm.
WAIST	20½	21	21½	22	23	23½	24½	25½	26½	in.
	52	53.5	54.5	56	58.5	59.5	62	65	67.5	cm.
HIP	--	24	25	26	27	28	30	32	34	in.
	--	61	63.5	66	68.5	71	76	81.5	86.5	cm.
BACK-NECK TO WAIST	9	9½	10	10½	11½	12	12¾	13½	14¼	in.
	23	24	25.5	26.5	29	30.5	32.5	34.5	36	cm.
HEIGHT	38	41	44	47	50	52	56	58½	61	in.
	96.5	104	112	120	127	132	143	149	155	cm.

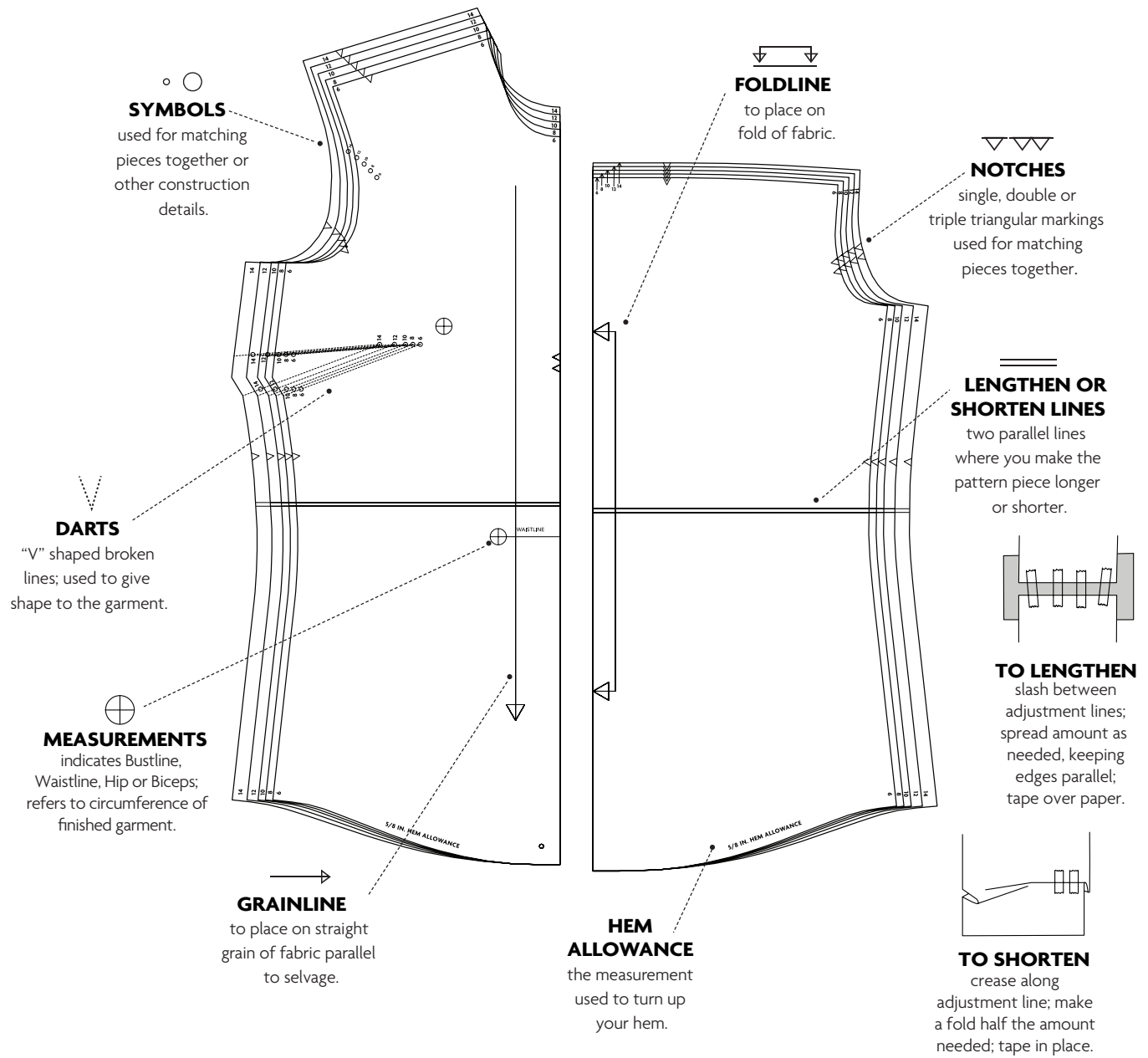
CUTTING AND MARKING

- > **SHRINK FABRIC** if not labeled pre-shrunk. Press.
- > **CIRCLE LAYOUT** for View, Size, Fabric Width.
- > Use **WITH NAP** layout for fabrics with one-way designs, nap, pile or surface shading. Because most knits have surface shading, a with nap layout is used.
- > For **DOUBLE THICKNESS (WITH FOLD)**, fold fabric with right sides together.
- > ***DOUBLE THICKNESS (WITHOUT FOLD)**, for fabrics with nap, fold fabric crosswise, right sides together. Mark as shown. Cut along crosswise fold of fabric (A). Turn upper layer 180° so arrows go in same direction and place over lower layer, right sides together (B).
- > For **SINGLE THICKNESS**, place fabric right side up. (For Fur Pile fabrics, place pile side down.)



- > Before **CUTTING**, place all pieces on fabric according to layout. Pin.
(Layouts show approximate position of pattern pieces; position may vary according to your pattern size.)
 - > ★ Cut other pieces first, allowing enough fabric to cut this piece. Open fabric. Cut piece on single layer of fabric with piece face up on right side of fabric.
 - > Cut accurately, cutting notches outward.
 - > Before removing pattern, **TRANSFER MARKINGS** and lines of construction to **WRONG SIDE** of fabric, using Pin and Chalk Pencil method or Tracing Paper and Dressmaker Wheel. Markings needed on right side of fabric should be thread traced.
- NOTE:** Broken-line boxes (a! b! c!) in layouts represent pieces cut by measurements provided.
- > Prewash your fabric using a method that's suitable for the fabric type.
 - > Fold fabric with right sides together, matching **SELVAGES**.
 - > Pin your pattern pieces to the fabric as shown below and cut them out using a sharp pair of dressmaker's shears.

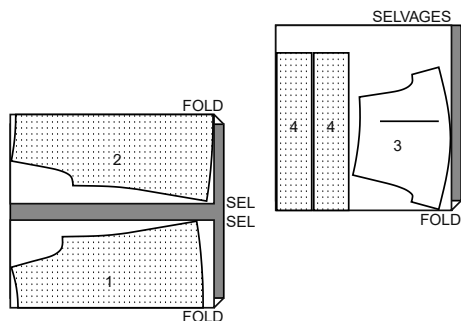
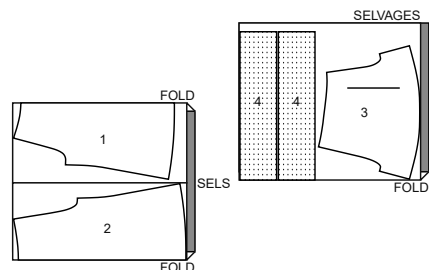
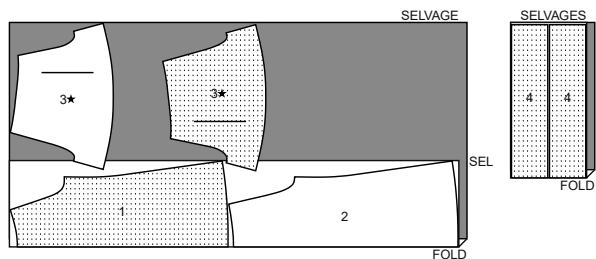
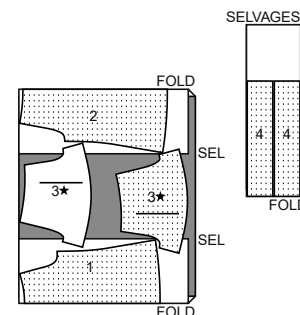
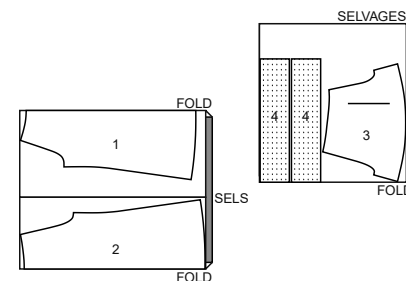
PATTERN MARKINGS



CUTTING LAYOUTS

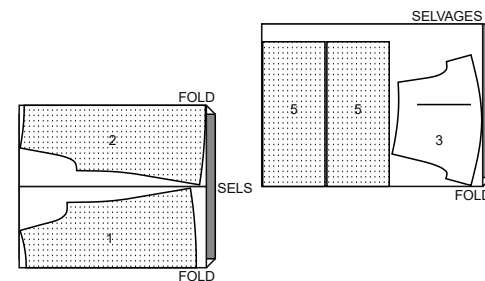
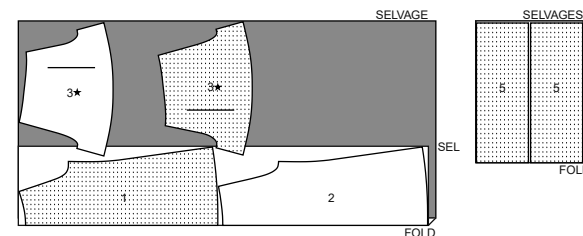
DRESS A

use pieces: 1,2,3,4

45" (115 cm)
with or without nap
sizes 3-4-5-645" (115 cm)
with or without nap
sizes 7-845" (115 cm)
with or without nap
sizes 10-12-1460" (150 cm)
with or without nap
sizes 3-4-5-660" (150 cm)
with or without nap
sizes 7-8-10-12-14

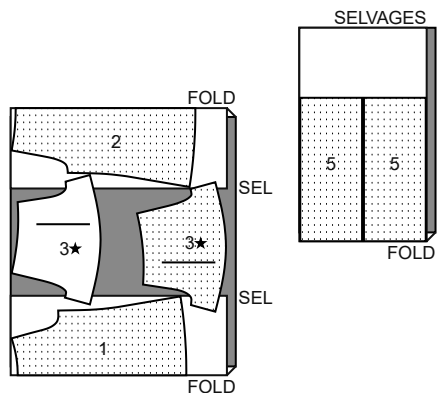
DRESS B

use pieces: 1,2,3,5

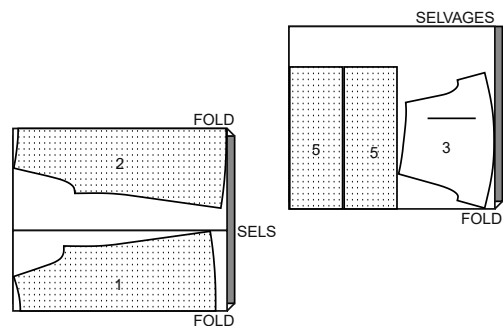
45" (115 cm)
with or without nap
sizes 3-4-5-645" (115 cm)
with or without nap
sizes 7-8-10-12-14

CUTTING LAYOUTS CONTINUED

60" (150 cm)
with or without nap
sizes 3-4-5-6



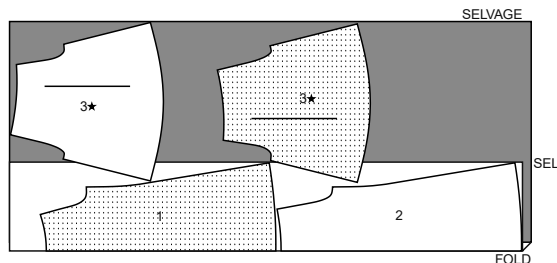
60" (150 cm)
with or without nap
sizes 7-8-10-12-14



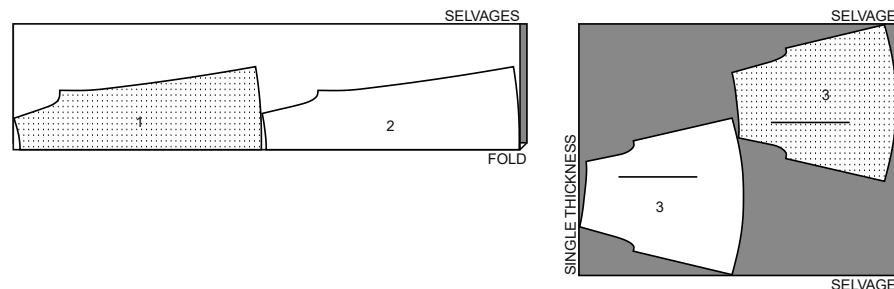
DRESS C

use pieces: 1,2,3

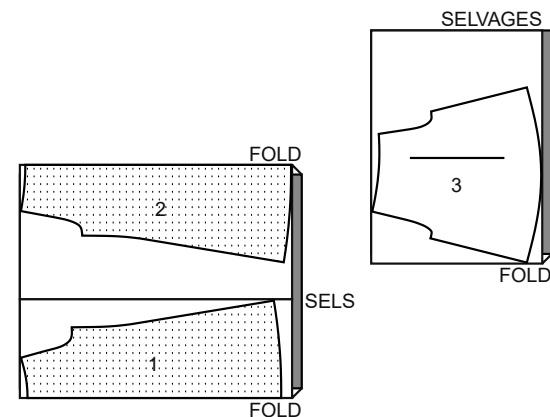
45" (115 cm)
with or without nap
sizes 3-4-5-6



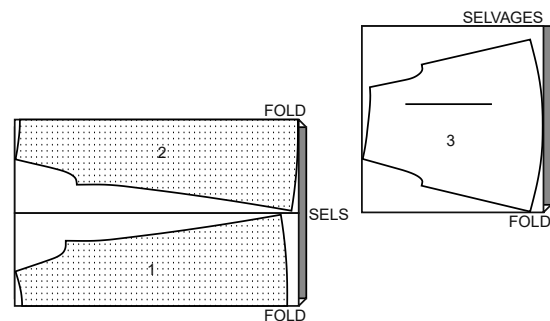
45" (115 cm)
with or without nap
sizes 7-8-10-12-14



60" (150 cm)
with or without nap
sizes 3-4-5-6



60" (150 cm)
with or without nap
sizes 7-8-10-12-14



PATTERN PIECES WILL BE IDENTIFIED BY NUMBERS THE FIRST TIME THEY ARE USED.

SEWING INFORMATION

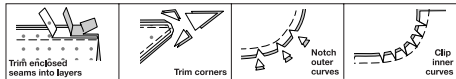
5/8" (1.5cm) SEAM ALLOWANCES ARE INCLUDED,
(unless otherwise indicated)

ILLUSTRATION SHADING KEY

Right Side	Wrong Side	Interfacing	Lining	Underlining

Pin or baste seams, right side together, matching notches. Fit garment before stitching major seams.

Press seam allowances flat; then open unless otherwise stated. Clip where necessary so they lie flat.



GLOSSARY

Sewing terms appearing in **BOLD TYPE** in Sewing Instructions are explained below.

GATHER - Stitch along seamline and again 1/4" (6mm) away in seam allowance, using long machine stitches. Pull thread ends when adjusting to fit.

NARROW HEM - Turn in hem; press, easing in fullness if necessary. Open out hem. Turn in again so raw edge is along crease; press. Turn in along crease; stitch.

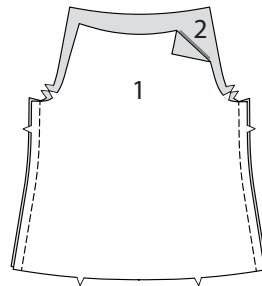
SEWING DIRECTIONS

DRESS

NOTE: View A will be illustrated, unless otherwise indicated.

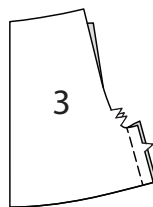
Front and Back

- 1.** With right sides together, stitch **FRONT** (1) to **BACK** (2) at sides.

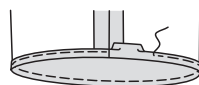


Sleeve

- 2.** Stitch seam in **SLEEVE** (3).



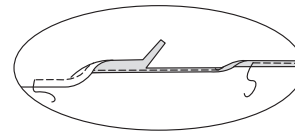
- 3. View A-** Make 5/8" (1.5cm) **NARROW HEM** at lower edge of sleeve.



- 4. View B-** To hem lower edge of sleeve, stitch 1/2" (1.3cm) from raw edge.

Turn in and press edge alongside stitching, as shown. Trim very close to stitching.

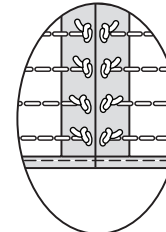
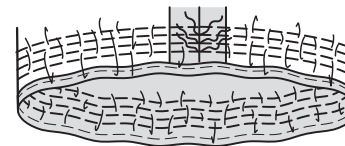
Turn in again along trimmed edge. Stitch in place.



- 5.** For shirring, wind the bobbin carefully by hand without pulling tightly on the elastic. Test shirring on a scrap piece of fabric. If your stitches are too loose, it may be necessary to tighten the tension.

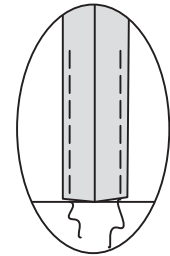
Stitch along stitching line using elastic thread.

Form three additional rows 3/8" (1cm) away from first stitching, securing thread ends on inside at one side seam. Steam press, holding iron very lightly over stitches.

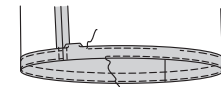


View C:

- 6.** For easier insertion of elastic, baste about 3" (7.5cm) of seam allowances in place at casing area.

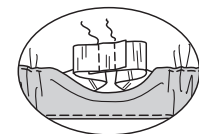


- 7.** To form casing for elastic, turn 5/8" (1.5cm) to inside on lower edge of sleeve. Turn in 1/4" (6mm) on raw edge; press. Stitch, leaving an opening to insert elastic. Stitch again close to lower edge.

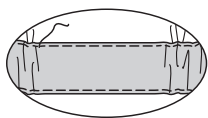


- 8.** Cut two pieces of elastic the lengths of **GUIDE FOR ELASTIC** (6).

Insert elastic through casing. Lap ends; hold with safety pin. Try on garment and adjust if necessary. Stitch ends of elastic securely.

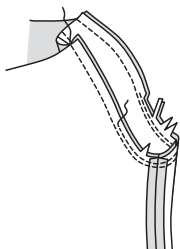


- 9.** Stitch opening in casing, stretching elastic while stitching.



Continue as Follows for all Views

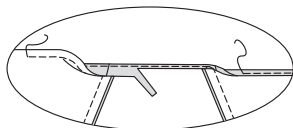
- 10.** With right sides together, pin sleeve to armhole edge; baste. Stitch. Stitch again 1/4" (6mm) away in seam allowance. Trim close to stitching. Press seam allowances flat. Turn seam toward sleeve.



- 11.** To hem neck edge, stitch 1/2" (1.3cm) from raw edge.

Turn in and press edge alongside stitching, as shown. Trim very close to stitching.

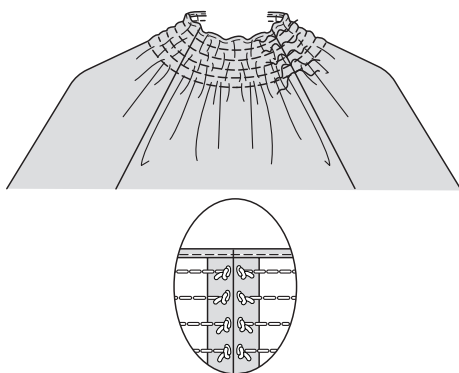
Turn in again along trimmed edge. Stitch in place.



- 12.** For shirring, wind the bobbin carefully by hand without pulling tightly on the elastic. Test shirring on a scrap piece of fabric. If your stitches are too loose, it may be necessary to tighten the tension.

Stitch along stitching line using elastic thread.

Form four additional rows 3/8" (1cm) away from first stitching, securing thread ends on inside at one armhole seam. Steam press, holding iron very lightly over stitches.

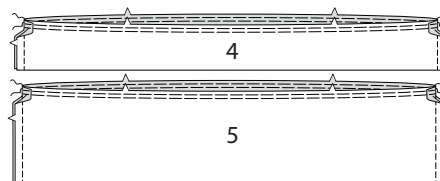


Finishing

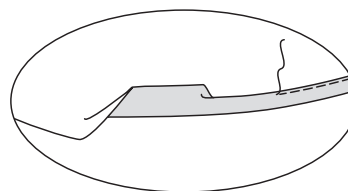
View A, B:

- 13.** Stitch RUFFLE (4) OR RUFFLE (5) sections together at sides, as shown.

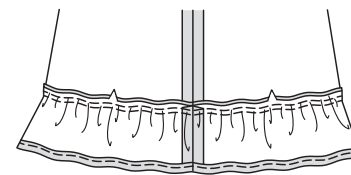
GATHER upper edge of ruffle.



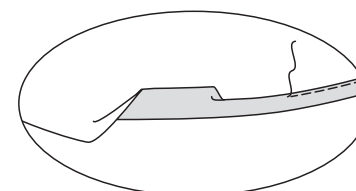
- 14.** Make 5/8" (1.5cm) **NARROW HEM** on lower edge of ruffle.



- 15.** Pin ruffle to lower edge of garment, matching seams and centers. Adjust gathers; baste. Stitch. Stitch again 1/4" (6mm) away in seam allowance. Trim close to stitching. Press seam up, turning ruffle down.



- 16. View C-** Make 5/8" (1.5cm) **NARROW HEM** on lower edge of dress.





Congrats!


You've completed your sewing adventure!

SHARE YOUR look!



Post your pattern and tag us at
@MCCALLPATTERNCOMPANY and use #mccallspatterns
for a chance to be featured on our social media!

Look for more McCall's PDF patterns at **McCallPattern.com**

 1-800-255-2762

© 2022 IG Design Group Americas, Inc. | All Rights Reserved
Sold for individual home use only and not for commercial or manufacturing purposes.