

McCall's[®] by design_{group} M8281



>> MISSES' DRESSES
SKILL LEVEL: EASY

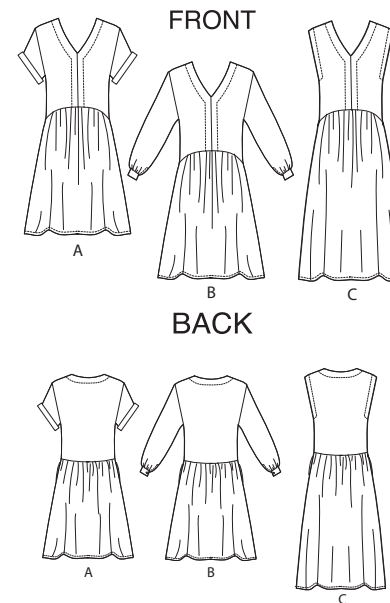
PDF
↓
PDF PATTERNS

THINGS YOU NEED:

> **B:** Two 5/8" (1.5cm) buttons.

SUGGESTED FABRICS:

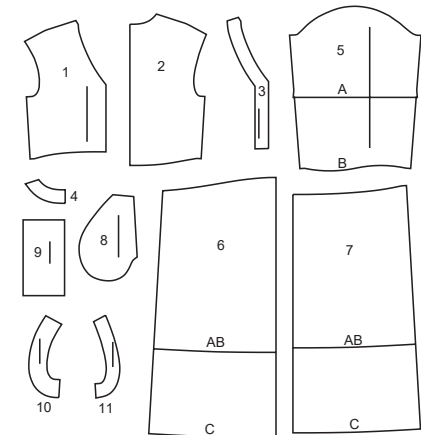
> Gauze, Linen, Cotton Blends, Stable Knits. **Interfacing:** Lightweight Fusible.



Your printed tile pieces should be assembled before you move on to this step!

PIECES (11)

- 1 BODICE FRONT A,B,C
- 2 BODICE BACK A,B,C
- 3 FRONT FACING A,B,C
- 4 BACK NECK FACING A,B,C
- 5 SLEEVE A,B
- 6 SKIRT FRONT A,B,C
- 7 SKIRT BACK A,B,C
- 8 POCKET A,B,C
- 9 CUFF B
- 10 FRONT ARMHOLE FACING C
- 11 BACK ARMHOLE FACING C



YARDAGE CHARTS

SIZES	XS	S	M	L	XL	XXL	
	(4-6)	(8-10)	(12-14)	(16-18)	(20-22)	(24-26)	
DRESS A							
45"***	2 $\frac{7}{8}$	3	3	3	3 $\frac{1}{8}$	3 $\frac{3}{8}$	yds.
60"***	2 $\frac{1}{8}$	2 $\frac{1}{8}$	2 $\frac{1}{4}$	2 $\frac{3}{8}$	2 $\frac{3}{8}$	2 $\frac{3}{4}$	"
115cm***	2.6	2.7	2.8	2.8	2.9	3.1	m.
150cm***	2.0	2.0	2.1	2.2	2.2	2.6	"
INTERFACING- 20" (51cm)- $\frac{3}{4}$ yd. (0.7m.)							
DRESS B							
45"***	3 $\frac{1}{4}$	3 $\frac{1}{4}$	3 $\frac{1}{4}$	3 $\frac{5}{8}$	3 $\frac{5}{8}$	3 $\frac{7}{8}$	yds.
60"***	2 $\frac{1}{4}$	2 $\frac{3}{8}$	2 $\frac{3}{8}$	2 $\frac{3}{4}$	2 $\frac{3}{4}$	3	"
115cm***	2.9	3.0	3.0	3.2	3.4	3.6	m.
150cm***	2.1	2.2	2.2	2.4	2.6	2.8	"
INTERFACING- 20" (51cm)- $\frac{7}{8}$ yd. (0.8m.)							
DRESS C							
45"***	2 $\frac{7}{8}$	3	3 $\frac{5}{8}$	3 $\frac{5}{8}$	3 $\frac{5}{8}$	3 $\frac{5}{8}$	yds.
60"***	2 $\frac{3}{8}$	2 $\frac{3}{8}$	2 $\frac{3}{4}$	2 $\frac{7}{8}$	2 $\frac{7}{8}$	3	"
115cm***	2.7	2.8	3.3	3.4	3.4	3.4	m.
150cm***	2.2	2.2	2.6	2.6	2.7	2.8	"
INTERFACING- 20" (51cm)- $\frac{7}{8}$ yds. (0.8m.)							

FINISHED GARMENT MEASUREMENTS

SIZES	XS	S	M	L	XL	XXL	
	(4-6)	(8-10)	(12-14)	(16-18)	(20-22)	(24-26)	
A,B,C BUST	37	39	42 $\frac{1}{2}$	46 $\frac{1}{2}$	50 $\frac{1}{2}$	54 $\frac{1}{2}$	ins.
	94	99	108	118	128	138	cm.
A,B,C WAIST	35 $\frac{1}{2}$	37 $\frac{1}{2}$	41	45	49	53	ins.
	90	95	104	115	125	135	cm.

FINISHED GARMENT MEASUREMENTS

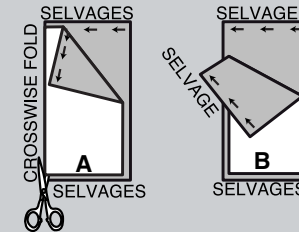
SIZES	XS	S	M	L	XL	XXL	
	(4-6)	(8-10)	(12-14)	(16-18)	(20-22)	(24-26)	
WIDTH, LOWER EDGE							
DRESS A,B	63¼	65¼	68¾	72¾	76¾	80¾	ins.
	160	165	175	185	195	205	cm.
DRESS C	66	68	71½	75½	79½	83½	ins.
	168	172	182	192	202	212	cm.
BACK LENGTH FROM BASE OF NECK							
DRESS A,B	38½	39	39½	40	40½	41	ins.
	98	99	100.5	102	103	104	cm.
DRESS C	50¼	50¾	51¼	51¾	52¼	52¾	ins.
	127	129	130	131	132	134	cm.

BODY MEASUREMENTS

SIZES	XS	S	M	L	XL	XXL	
	(4-6)	(8-10)	(12-14)	(16-18)	(20-22)	(24-26)	
BUST	29½-30½	31½-32½	34-36	38-40	42-44	46-48	ins.
	75-77	80-83	87-92	97-102	107-112	117-122	cm.
WAIST	22-23	24-25	26½-28	30-32	34-37	39-41½	ins.
	56-58	61-64	67-71	76-81	87-94	99-105	cm.
HIP	31½-32½	33½-34½	36-38	40-42	44-46	48-50	ins.
	80-83	85-88	92-97	102-107	112-117	122-127	cm.
BACK WAIST LENGTH	15¼-15½	15¾-16	16¼-16½	16¾-17	17¼-17½	17¾-18	ins.
	39-39.5	40-40.5	41.5-42	42.5-43	44-44.5	45-45.5	cm.

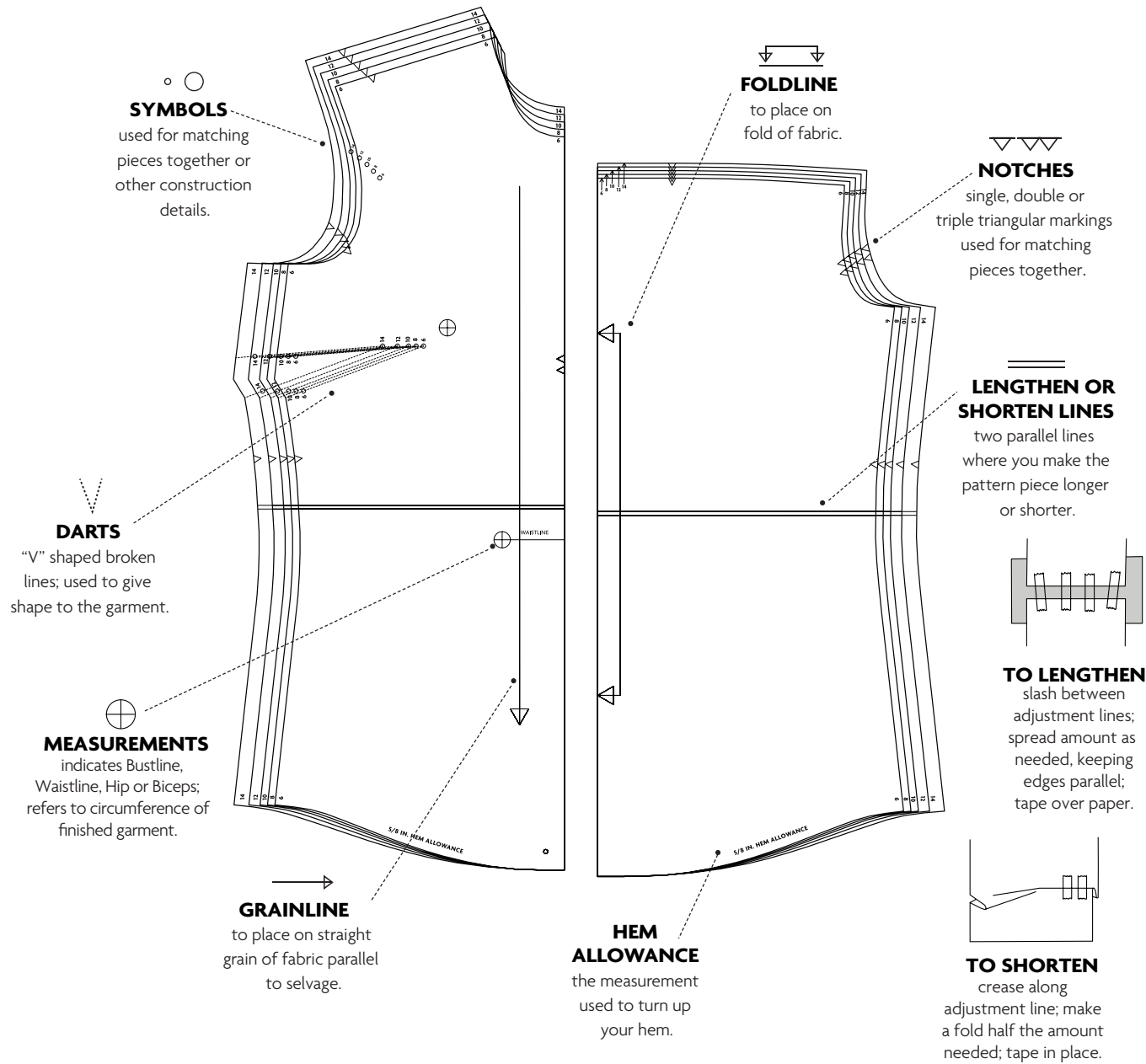
CUTTING AND MARKING

- > **SHRINK FABRIC** if not labeled pre-shrunk. Press.
- > **CIRCLE LAYOUT** for View, Size, Fabric Width.
- > Use **WITH NAP** layout for fabrics with one-way designs, nap, pile or surface shading. Because most knits have surface shading, a with nap layout is used.
- > For **DOUBLE THICKNESS (WITH FOLD)**, fold fabric with right sides together.
- > ***DOUBLE THICKNESS (WITHOUT FOLD)**, for fabrics with nap, fold fabric crosswise, right sides together. Mark as shown. Cut along crosswise fold of fabric (A). Turn upper layer 180° so arrows go in same direction and place over lower layer, right sides together (B).
- > For **SINGLE THICKNESS**, place fabric right side up. (For Fur Pile fabrics, place pile side down.)



- > Before **CUTTING**, place all pieces on fabric according to layout. Pin.
(Layouts show approximate position of pattern pieces; position may vary according to your pattern size.)
- > ★ Cut other pieces first, allowing enough fabric to cut this piece. Open fabric. Cut piece on single layer of fabric with piece face up on right side of fabric.
- > Cut accurately, cutting notches outward.
- > Before removing pattern, **TRANSFER MARKINGS** and lines of construction to **WRONG SIDE** of fabric, using Pin and Chalk Pencil method or Tracing Paper and Dressmaker Wheel. Markings needed on right side of fabric should be thread traced.
NOTE: Broken-line boxes (a! b! c!) in layouts represent pieces cut by measurements provided.
- > Prewash your fabric using a method that's suitable for the fabric type.
- > Fold fabric with right sides together, matching **SELVAGES**.
- > Pin your pattern pieces to the fabric as shown below and cut them out using a sharp pair of dressmaker's shears.

PATTERN MARKINGS

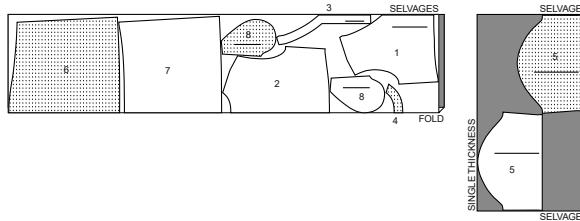


CUTTING LAYOUTS

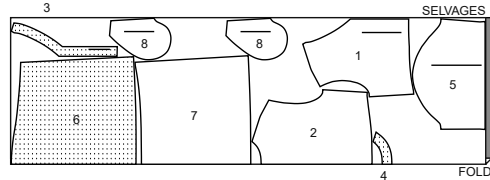
DRESS A

use pieces: 1,2,3,4,5,6,7,8

45" (115 cm)
with or without nap
all sizes



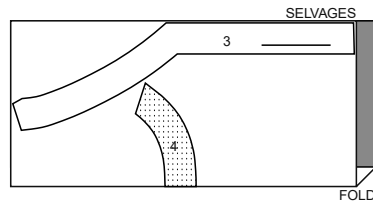
60" (150 cm)
with or without nap
all sizes



INTERFACING A

use pieces: 3,4

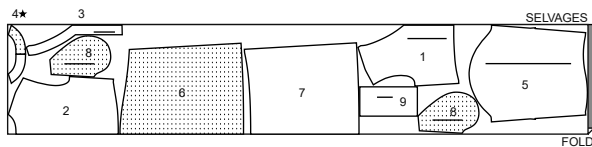
20" (51 cm)
all sizes



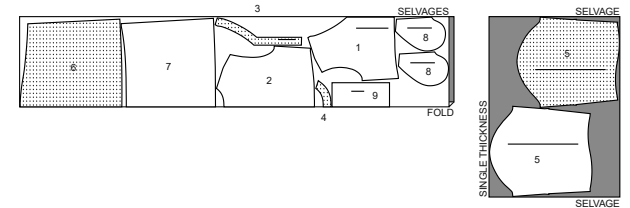
DRESS B

use pieces: 1,2,3,4,5,6,7,8,9

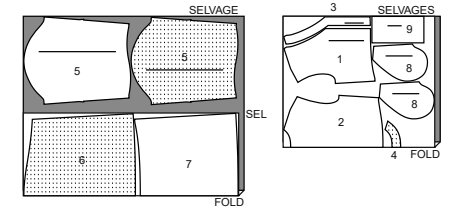
45" (115 cm)
with or without nap
sizes XS-S-M



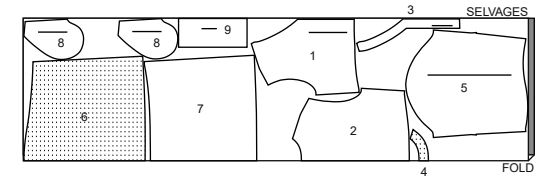
45" (115 cm)
with or without nap
sizes L-XL-XXL



60" (150 cm)
with or without nap
sizes XS-S-M



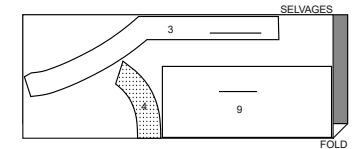
60" (150 cm)
with or without nap
sizes L-XL-XXL



INTERFACING B

use pieces: 3,4

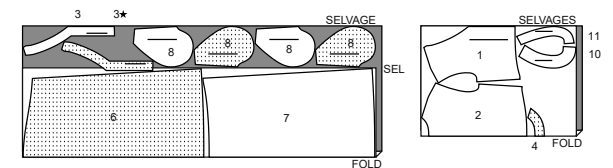
20" (51 cm)
all sizes



DRESS C

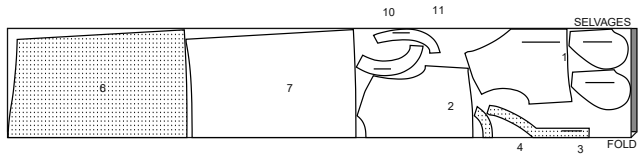
use pieces: 1,2,3,4,6,7,8,10,11

45" (115 cm)
with or without nap
sizes XS-S

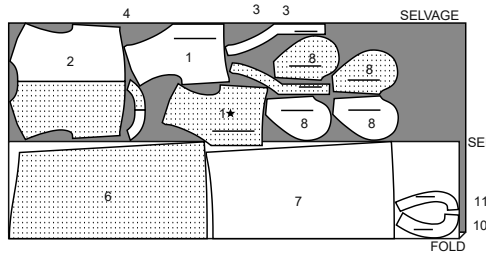


CUTTING LAYOUTS CONTINUED

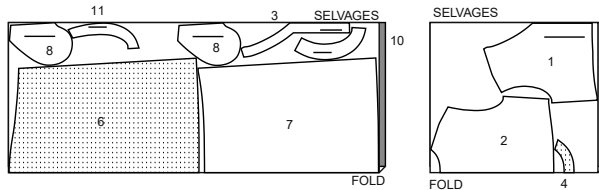
45" (115 cm)
with or without nap
sizes M-L-XL-XXL



60" (150 cm)
with or without nap
sizes XS-S



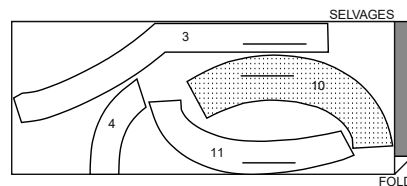
60" (150 cm)
with or without nap
sizes M-L-XL-XXL



INTERFACING C

use pieces: 3,4,10,11

20" (51 cm)
all sizes



PATTERN PIECES WILL BE IDENTIFIED BY NUMBERS THE FIRST TIME THEY ARE USED.

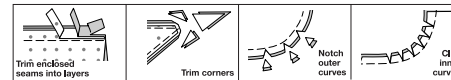
SEWING INFORMATION

5/8" (1.5cm) SEAM ALLOWANCES ARE INCLUDED,
(unless otherwise indicated)
ILLUSTRATION SHADING KEY

Right Side	Wrong Side	Interfacing	Lining	Underlining

Pin or baste seams, right side together, matching notches. Fit garment before stitching major seams.

Press seam allowances flat; then open unless otherwise stated. Clip where necessary so they lie flat.



GLOSSARY

Sewing terms appearing in **BOLD TYPE** in Sewing Instructions are explained below.

FINISH - Stitch 1/4" (6mm) from raw edge and finish with one of the following: (1) Pink OR (2) Overcast OR (3) Turn in along stitching and stitch close to fold OR (4) Overlock.

OPTIONAL FOR HEMS: Apply Seam Binding.

GATHER - Stitch along seamline and again 1/4" (6mm) away in seam allowance, using long machine stitches. Pull thread ends when adjusting to fit.

NARROW HEM - Turn in hem; press, easing in fullness if necessary. Open out hem. Turn in again so raw edge is along crease; press. Turn in along crease; stitch.

SLIPSTITCH - Slide needle through a folded edge, then pick up a thread of underneath fabric.

TOPSTITCH - On outside, stitch 1/4" (6mm) from edge, seam or previous stitching, using presser foot as guide, or stitch where indicated in instructions.

UNDERSTITCH - Open out facing or underside of garment; stitch to seam allowance close to seam.

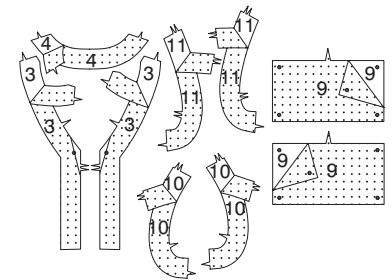
SEWING DIRECTIONS

DRESS A, B, C

NOTE: Illustrated for **View A** unless otherwise indicated.

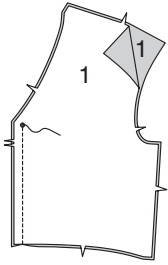
Interfacing

1. Fuse **INTERFACING** to wrong side of each matching **FABRIC** section, as shown, following manufacturer's instructions.

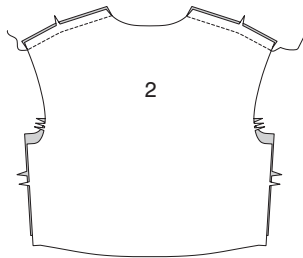


Bodice

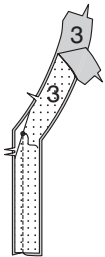
2. Stitch **BODICE FRONT (1)** sections together at center front below small dot.



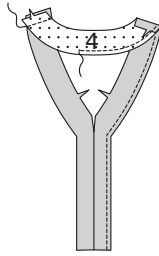
3. Stitch bodice front sections to **BODICE BACK (2)** at shoulders.



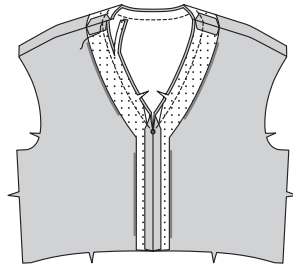
4. Stitch **FRONT FACING (3)** sections together at center front below small dot.



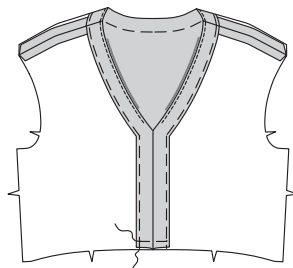
5. Stitch front facing and **BACK NECK FACING (4)** together at shoulders. **FINISH** outer edge of facing.



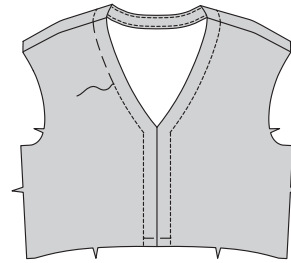
6. With right sides together, pin facing to neck edge. Stitch, pivoting at small dot. Trim. **UNDERSTITCH** facing.



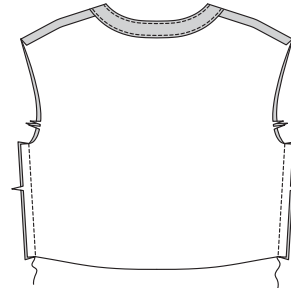
7. Turn facing to inside; press. Baste facing 1" (2.5cm) from finished neck edge. Baste lower edge together.



8. On outside, **TOPSTITCH** along basting.

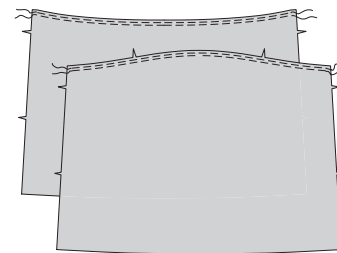


9. Stitch bodice front and back at sides.

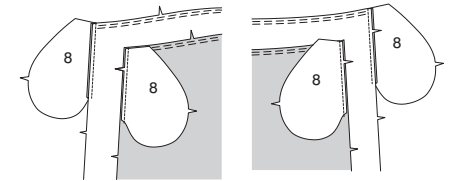


Skirt

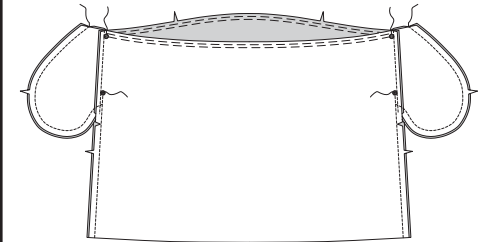
10. **GATHER** upper edge of **SKIRT FRONT (6)** and **SKIRT BACK (7)** between seamlines.



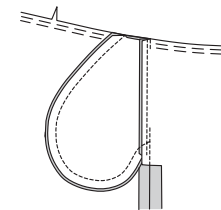
11. Stitch one **POCKET (8)** to skirt back at each side in 1/4" (6mm) seam. Press seams toward pockets. Stitch one pocket to skirt front at each side in 1/4" (6mm) seam. Press seams toward pockets.



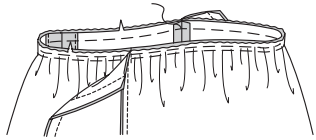
12. Stitch skirt front and skirt back together at sides, leaving open between large dots. Stitch pocket edges together to side seams. Clip back seam allowances below pockets.



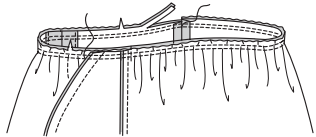
13. Turn pockets toward front along seamline; press.



14. Open out pockets. Pin skirt to bodice, matching centers and seams. Adjust gathers; baste.



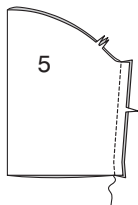
15. Turn pockets down. Baste. Stitch waist seam. Stitch again 1/4" (6mm) away in seam allowance. Trim close to stitching. Press seam toward bodice.



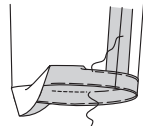
Armhole Finish

View A:

16. Stitch SLEEVE (5) seam.

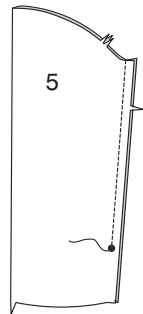


17. Turn up sleeve hem. Baste close to fold. Turn in 1/4" (6mm) on raw edge. Baste hem in place close to upper edge. Press. **TOPSTITCH** hem along upper basting.

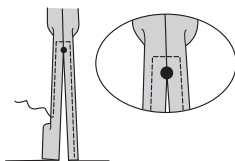


View B:

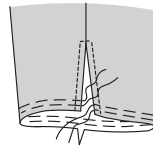
18. Stitch SLEEVE (5) seam, leaving open below large dot.



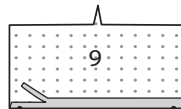
19. Make 5/8" (1.5cm) **NARROW HEM** at opening edge, tapering to nothing above large dot. Pivot across seam allowance 1/4" (6mm) above large dot when stitching.



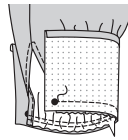
20. GATHER lower edge of sleeve.



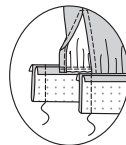
21. Turn in seam allowance on long unnotched edge of CUFF (9); press. Trim pressed seam allowance to 3/8" (1cm).



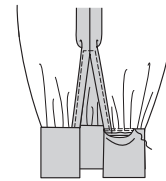
22. Pin cuff to sleeve, placing small dots at opening edges. Adjust gathers; baste. Stitch. Trim. Press seam toward cuff.



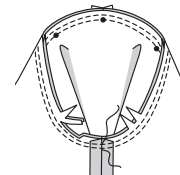
23. With right sides together, fold cuff along foldline; stitch ends. Trim.



24. Turn. Press. **SLIPSTITCH** pressed edge over seam.

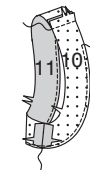


25. Views A, B: With right sides together, pin sleeve into armhole, placing center small dot at shoulder seam. Baste. Stitch. Stitch again 1/4" (6mm) away in seam allowance. Trim close to stitching. Press seam allowances flat. Turn seam toward sleeve.

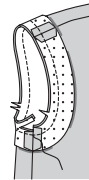


View C:

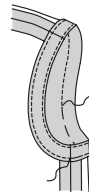
26. Stitch **FRONT ARMHOLE FACING** (10) to **BACK ARMHOLE FACING** (11) at shoulder and underarm edges. **FINISH** unnotched edge.



27. Pin facing to armhole edge, matching seams. Stitch. Trim. **UNDERSTITCH** facing.

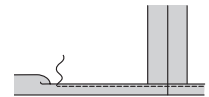


28. Turn armhole facing to inside; press. Baste facing 1" (2.5cm) from finished armhole edge. **TOPSTITCH** along basting.



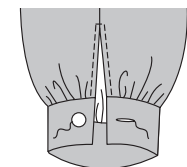
Finishing

29. Make 5/8" (1.5cm) **NARROW HEM** at lower edge.



View B:

30. Make buttonhole in cuff at marking. Sew button to cuff at marking.





Congrats!


You've completed your sewing adventure!

**SHARE
YOUR** look!



Post your pattern and tag us at
@MCCALLPATTERNCOMPANY and use #mccallpatterns
for a chance to be featured on our social media!

Look for more McCall's PDF patterns at **McCallPattern.com**

 1-800-255-2762

© 2022 IG Design Group Americas, Inc. | All Rights Reserved
Sold for individual home use only and not for commercial or manufacturing purposes.