

McCall's[®] | by design^{group} M8270



>> BUNNY AND DRESSES
SKILL LEVEL: VERY EASY

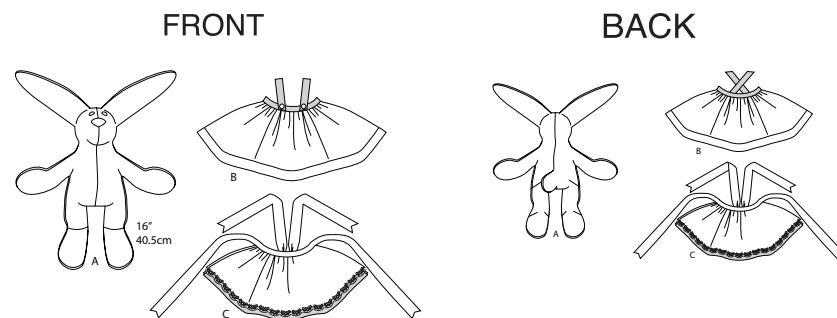


THINGS YOU NEED:

- > **A:** Shank Buttons or Safety Lock Eyes, Safety Lock Nose, Polyester Fiberfil, Interfacing Scraps, Optional Ribbon (for Bow). **B:** Two Buttons. **C:** 3 yds. (2.7m) of 1½" (3.8cm) Ribbon, ¾ yd. (0.7m) of ½" - 5/8" (1.3cm - 1.5cm) Lace Trim.

SUGGESTED FABRICS:

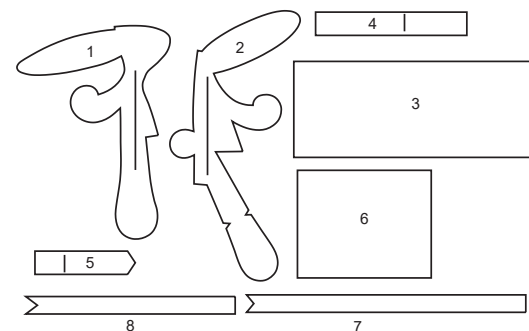
- > **A,B,C:** Cotton/Cotton Blends. **Also for A:** Flannel, Fleece, Short and Long Pile Fleece, Fake Fur. **Contrast C:** Tulle.



Your printed tile pieces should be assembled before you move on to this step!

PIECES (8)

- 1 FRONT A
- 2 BACK A
- 3 FRONT AND BACK B
- 4 WAISTBAND B
- 5 STRAP B
- 6 FRONT AND BACK C
- 7 GUIDE FOR WAISTBAND C
- 8 GUIDE FOR STRAP C

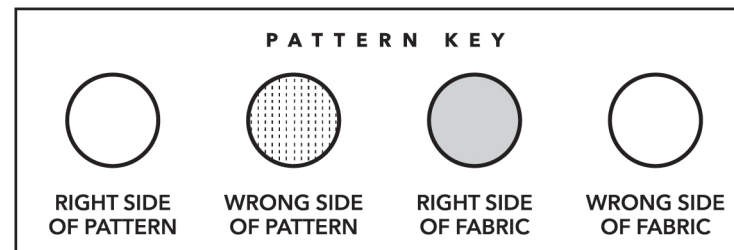
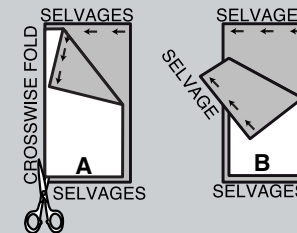


YARDAGE CHART

BUNNY A - 45", 60"*** (115cm, 150cm***)- ¾ yd. (0.7m)
DRESS B - 45"*** (115cm***)- ¾ yd. (0.4m)
CONTRAST B (WAISTBAND, STRAPS) - 15" W x 8" H (38cm W x 21cm H) remnant
DRESS C - 45"*** (115cm***)- ¾ yd. (0.4m)
CONTRAST C (PETTICOAT) - 54"*** (138cm**)- ¾ yd. (0.4m)

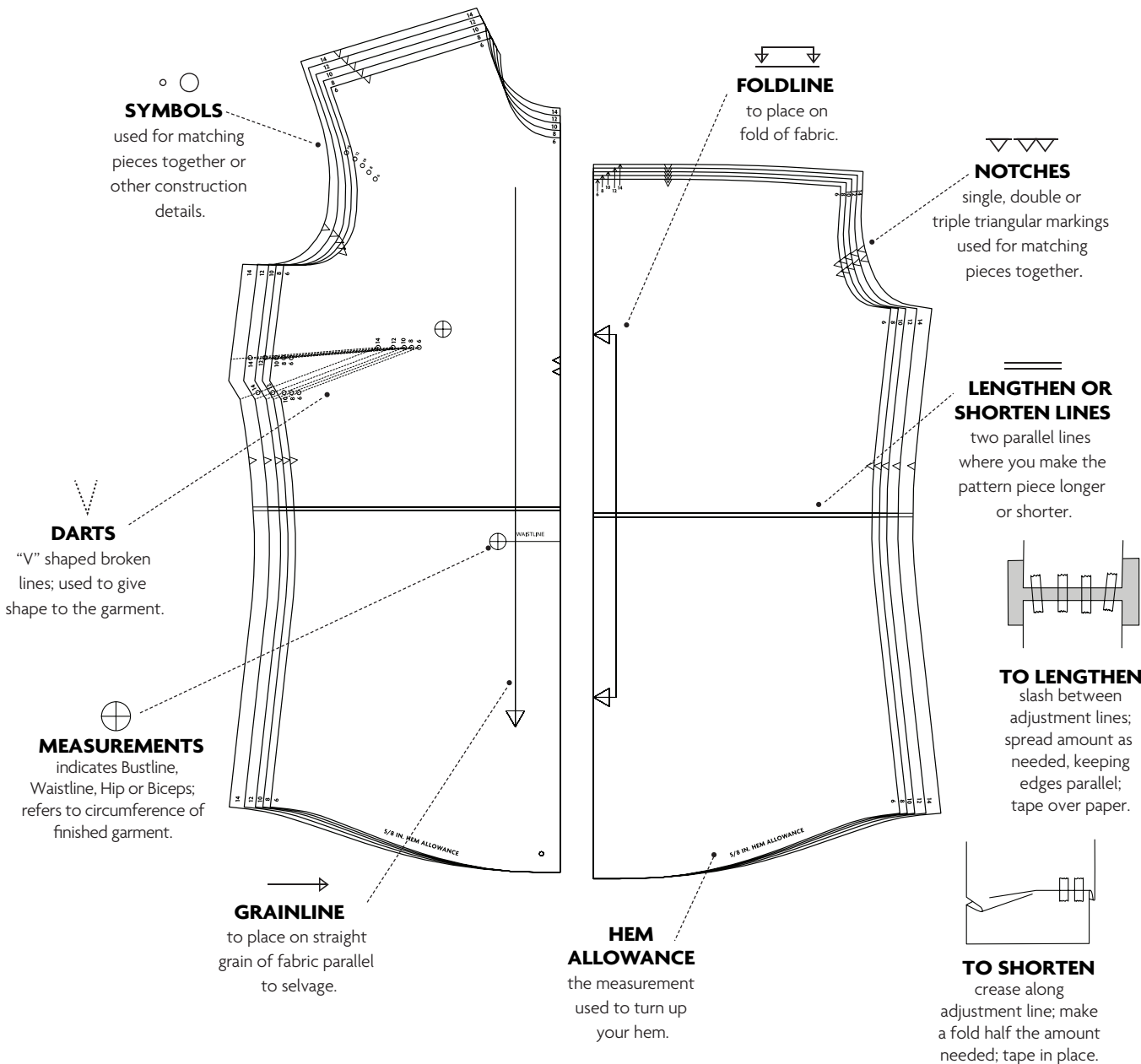
CUTTING AND MARKING

- > **SHRINK FABRIC** if not labeled pre-shrunk. Press.
- > **CIRCLE LAYOUT** for View, Size, Fabric Width.
- > Use **WITH NAP** layout for fabrics with one-way designs, nap, pile or surface shading. Because most knits have surface shading, a with nap layout is used.
- > For **DOUBLE THICKNESS (WITH FOLD)**, fold fabric with right sides together.
- > ***DOUBLE THICKNESS (WITHOUT FOLD)**, for fabrics with nap, fold fabric crosswise, right sides together. Mark as shown. Cut along crosswise fold of fabric (A). Turn upper layer 180° so arrows go in same direction and place over lower layer, right sides together (B).
- > For **SINGLE THICKNESS**, place fabric right side up. (For Fur Pile fabrics, place pile side down.)



- > Before **CUTTING**, place all pieces on fabric according to layout. Pin.
(Layouts show approximate position of pattern pieces; position may vary according to your pattern size.)
 - > ★ Cut other pieces first, allowing enough fabric to cut this piece. Open fabric. Cut piece on single layer of fabric with piece face up on right side of fabric.
 - > Cut accurately, cutting notches outward.
 - > Before removing pattern, **TRANSFER MARKINGS** and lines of construction to **WRONG SIDE** of fabric, using Pin and Chalk Pencil method or Tracing Paper and Dressmaker Wheel. Markings needed on right side of fabric should be thread traced.
- NOTE:** Broken-line boxes (a! b! c!) in layouts represent pieces cut by measurements provided.
- > Prewash your fabric using a method that's suitable for the fabric type.
 - > Fold fabric with right sides together, matching **SELVAGES**.
 - > Pin your pattern pieces to the fabric as shown below and cut them out using a sharp pair of dressmaker's shears.

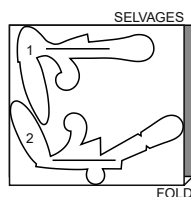
PATTERN MARKINGS



CUTTING LAYOUTS

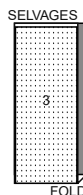
BUNNY A

use pieces: 1,2

45",60" (115, 150 cm)
with or without nap

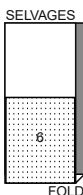
DRESS B

use piece: 3

45" (115 cm)
with or without nap

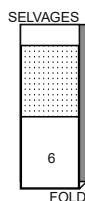
DRESS C

use piece: 3

45" (115 cm)
with or without nap

CONTRAST (PETTICOAT) C

use piece: 6

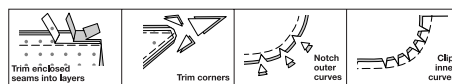
54" (138 cm)
with or without napPATTERN PIECES WILL BE IDENTIFIED
BY NUMBERS THE FIRST TIME THEY
ARE USED.

SEWING INFORMATION

 $\frac{5}{8}$ " (1.5cm) SEAM ALLOWANCES
ARE INCLUDED,
(unless otherwise indicated)

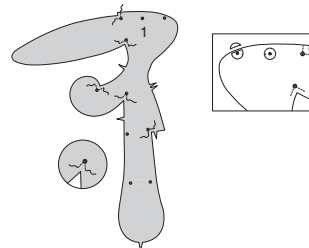
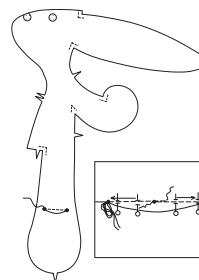
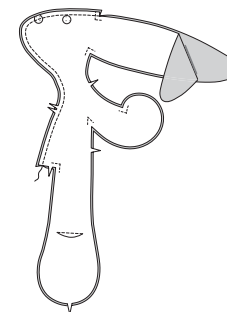
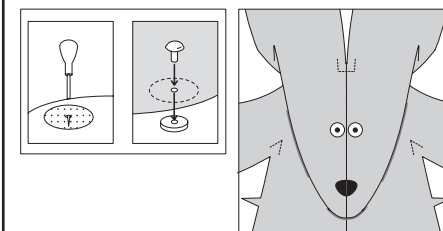
ILLUSTRATION SHADING KEY

Right Side	Wrong Side	Interfacing	Lining	Underlining

Pin or baste seams, right side together,
matching notches. Fit garment before
stitching major seams.Press seam allowances flat; then open
unless otherwise stated. Clip where
necessary so they lie flat.

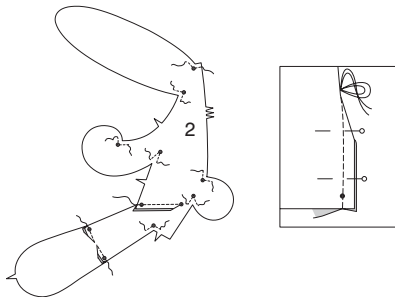
SEWING DIRECTIONS

BUNNY A

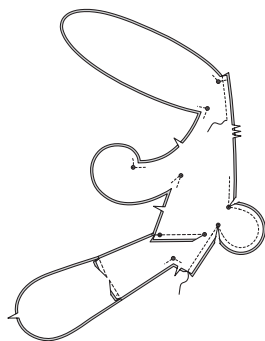
NOTE: 1/4" (6mm) seams are included.**1.** To reinforce inner corners of front (1),
using fine stitches, stitch along seam line
for 1/2" (1.3cm) on either side of small
dots on inner corners, stitching through
each small dot.To reinforce front for safety eyes and
nose, cut 1" (2.5cm) circles from
remnants of fusible interfacing. Pin
circles to wrong side of front over small
dots. Trim nose remnant even with
outer raw edge. Fuse in place, following
manufacturer's directions.**2.** To make leg dart, with RIGHT sides
together, fold the fabric through the
center of the dart, bringing broken lines
and small dots together. On INSIDE,
place pins at RIGHT angles to the broken
lines. Stitch the dart from the middle
to one point. Then, overlapping several
stitches, work from the middle to the
other point. If necessary, carefully clip
the dart at its widest point so that it will
lie flat.**TIP-** To prevent a "bubble" at each
point, make the last few stitches right on
the fold and leave the thread ends long
enough to tie a knot.
DO NOT back-stitch at the points.
Lightly press dart flat along the stitching
to "blend" the stitches, then lightly press
dart down.**3.** Pin center front seam of front
sections from top of head to bottom of
torso, as shown.**4.** To attach each eye and nose, using
a sharp pointed object or an awl, poke a
hole at small dots. (It may be necessary
to re-stitch center front seam on each
side of small dot for nose).
Insert the eye and nose shank through
the opening from OUTSIDE and on
INSIDE secure in place with washer
making sure it is on securely.

5. Reinforce inner corners of back (2) in same manner as for front sections, excluding small dots on dart seam. To stitch dart seam, with **RIGHT** sides together, bring broken lines together carefully matching small dots. On **INSIDE**, place pins at **RIGHT** angles to the broken lines. Stitch the dart seam from outer edge to the point.

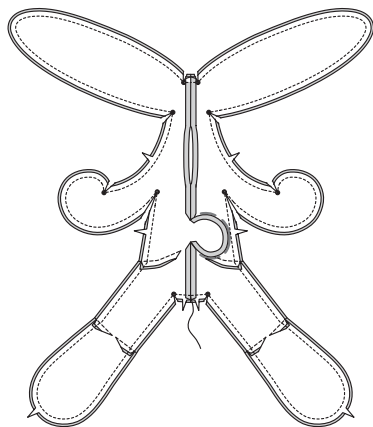
TIP- To prevent a “bubble” at the point, make the last few stitches right on the fold and leave the thread ends long enough to tie a knot. **DO NOT** back-stitch at the point. Stitch dart seams in leg in same manner.



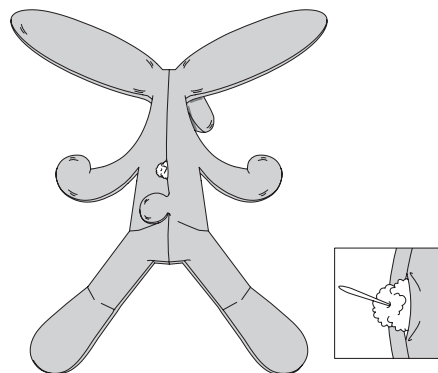
6. Pin center back seam of back sections from top of head to bottom of torso. Stitch, pivoting with needle in fabric at small dots and leaving an opening for turning, as shown. Clip seam allowance to stitching at each small dot, being careful not to clip through stitching.



7. Pin front to back at side seams, matching small dots. Stitch, pivoting with needle in fabric at small dots. Clip seam allowance to stitching at each small dot, being careful not to clip through stitching.



8. Turn bunny right side out; finger press. Stuff bunny.



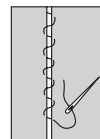
Tips for stuffing:

- Pull fiberfill apart and fluff it before you use it. Break apart the lumps and thick spots. This will help to create a smoother looking project.
- Use pieces about the size of a tennis ball. Pack into place using the end of a long handled wooden spoon or chopstick.

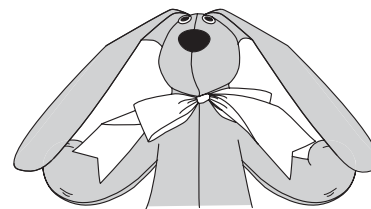
- Use small pieces and pack into place using the end of a crochet hook or chopstick.
- Pack firmly in place each time stuffing is added. Use both hands to mold and shape, being careful not to over stuff or make lopsided.

9. Ladder stitch opening closed, as follows:

Using a strong thread, take a small stitch in one edge close to seam. Then take a small stitch in the other edge close to seam. Pull up thread after each stitch to bring edges together. Continue to alternate from edge to edge with the smallest hand-stitches possible. Knot thread securely at end of stitching.

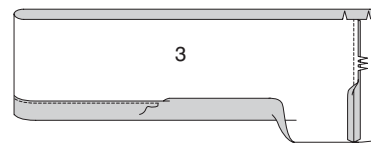


10. Optional- Tie ribbon around bunny's neck. Trim ends at an angle or by cutting out “V” shapes.



DRESS B

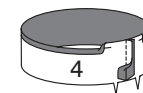
1. For skirt, stitch center back seam of front and back (3). Press up hem on unnotched edge; press under 1/4” (6mm) on raw edge. Stitch close to inner pressed edge.



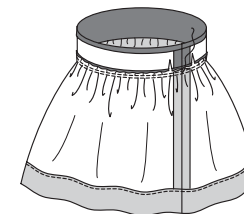
2. To gather upper edge of skirt between notches, stitch along seam line and 1/8” (3mm) **INSIDE** seam line, using a long machine-stitch.



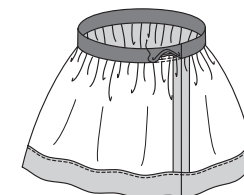
3. Stitch center back seam of waistband (4). Press under 1/4” (6mm) on unnotched edge.



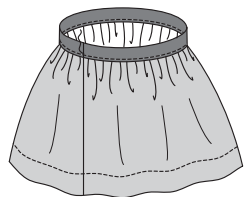
4. With **RIGHT** sides together, pin waistband to skirt, matching centers, seams, and notches. Pull up gathering stitches to fit; baste. Stitch.



5. Turn waistband to **INSIDE** along foldline; press. Slipstitch pressed edge of waistband over seam.



- 6.** On outside, edgestitch lower edge of waistband.



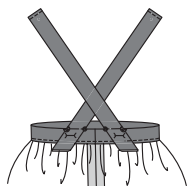
- 7.** Fold strap (5) along fold line, with RIGHT sides together. Stitch long raw edges together.



- 8.** Turn strap RIGHT side out; press. Baste raw edges together along solid line, as shown. To finish straight end, press under 1/8" (3mm) twice; stitch close to inner pressed edge.



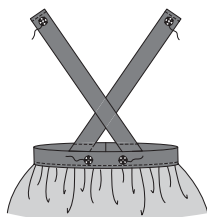
- 9.** On INSIDE, pin angled end of strap to back of waistband, matching small and large dots as shown, placing pins on OUTSIDE.



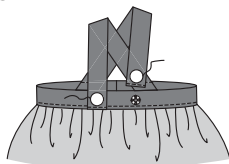
- 10.** On outside, stitch close upper and lower edges of waistband, catching in straps on INSIDE.



- 11.** On outside, sew socket halves of snaps to front of waistband at small dots. Sew knob half of snap to underside of each strap over small dot.

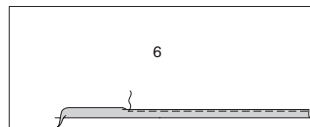


- 12.** On outside, sew buttons to straps over small dots. Criss-cross straps and fasten snaps.



DRESS C

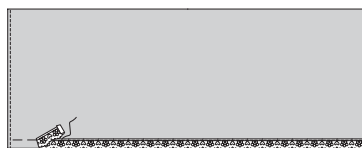
- 1.** Press up hem on lower edge of front and back (6) skirt section. Press under 1/4" (6mm) on raw edge. Baste hem close to inner pressed edge.



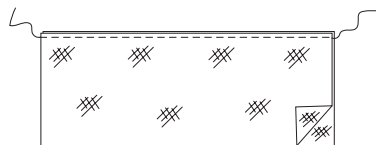
- 2.** Press up hem on side edges of skirt. To form narrow hem, tuck under raw edge to meet crease. Press. Baste hem in place close to inner pressed edge.



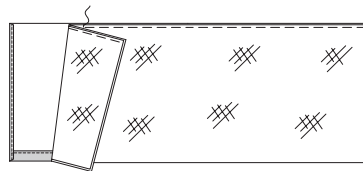
- 3.** On outside, pin straight edge of lace to lower edge of skirt just over basting. Turn under 1/2" (1.3cm) on each end. Stitch along basting.



- 4.** Baste upper edges of tulle sections together along seamline.



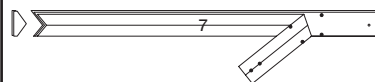
- 5.** Pin tulle sections to WRONG side of back, matching centers, having upper edges even and raw side edges of tulle even with hemmed side edges of skirt. Baste upper edge.



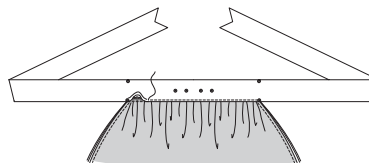
- 6.** To gather upper edge of skirt, stitch along seam line and 1/8" (3mm) INSIDE seam line, using a long machine-stitch.



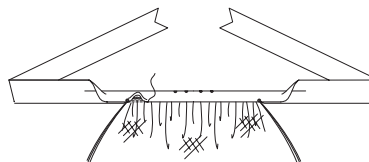
- 7.** Using guide for waistband (7), cut one waistband from ribbon. Mark small dots.



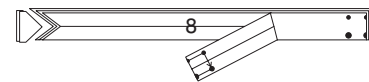
- 8.** With right sides facing up towards you, pin lower edge of waistband to skirt along seamline, matching centers and small dots. Pull up gathering stitches to fit; stitch close to lower edge of ribbon.



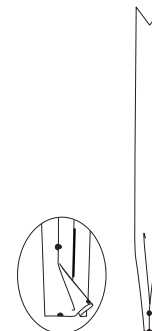
- 9.** Turn ribbon to inside along fold line; press. Slipstitch lower edge of ribbon over seam.



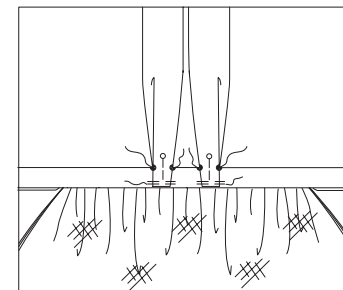
- 10.** Using guide for strap (8), cut two straps from ribbon. Mark small and large dots.



- 11.** To make pleat on straight end of strap, bring small dots to large dots. Lightly press. Baste across lower edge.



- 12.** With wrong sides facing up towards you, pin pleated end of strap to front of waistband between small dots. Invisibly sew straps to waistband close to upper edge of skirt, keeping pleat in place. Hand-tack lower edges of straps to waistband, being careful not to let stitches show on outside of band.



- Tie end of straps in a bow at back neck and ends of waistband at back waist, as shown on envelope.



Congrats!


You've completed your sewing adventure!

**SHARE
YOUR** look!



Post your pattern and tag us at
@MCCALLPATTERNCOMPANY and use #mccallspatterns
for a chance to be featured on our social media!

Look for more McCall's PDF patterns at **McCallPattern.com**

 1-800-255-2762

© 2022 IG Design Group Americas, Inc. | All Rights Reserved
Sold for individual home use only and not for commercial or manufacturing purposes.