

# McCall's®

M8257



Create your own designer garment with this McCall's licensed sewing pattern.



Shop all the pattern brands you love at

**Simplicity®.com**

For customers outside of the U.S. and Canada

**sewdirect.com**

**sewdirect.com.au**

18 PIECES

Easy  
Fadde

## MISSES' TOPS, SKIRT AND PANTS

**Suggested Fabrics:** Lawn, Lightweight Cotton Blends, Challis, Crepe. **Contrast A,B:** Lace.

**Notions:** A,B: 6½ yds. (6.10m) of 2" (5cm) Wide Flat Lace. **D,E:** 1½ yds. (1.4m) of ¾" (2cm) Wide Elastic.

Sizes	XS (4-6)	S (8-10)	M (12-14)	L (16-18)	XL (20-22)	XXL (24-26)
-------	-------------	-------------	--------------	--------------	---------------	----------------

**Top A** - 45" to 60" - 1½ yds.; **Contrast A** - 45" to 60" - 1½ yds.

Top B							
45"	1¾	1¾	1¾	1¾	2	2	Yds.
60"	1	1	1	1¼	1¾	1¾	"

Top C							
45"	2½	2¼	2¾	2½	2¾	2¾	Yds.
60"	1½	1½	1¾	1¾	2¼	2¾	"

Skirt D							
45"	3¾	4¼	5	5¾	5¾	5¾	Yds.
60"	2¾	2¾	2¾	2¾	2¾	2¾	"

**Pants E** - 45" to 60" - 2½ yds.

## FINISHED GARMENT MEASUREMENTS

**Skirt D Width** 82 84 86 89½ 93½ 97½ Ins.

**Pants E Leg Width** 25½ 26½ 27½ 28½ 29½ 30½

**Back length from waist:**

**Skirt D** 42 42 42 42 42 42 Ins.

**Side length from waist:**

**Pants E** 44 44 44 44 44 44 Ins.

## HAUTS, JUPE ET PANTALON POUR JEUNES FEMMES

**Tissus Conseillés:** Linon, Cotonnades de poids léger, Challis, Crepe. **Contraste A,B:** Dentelle.

**Mercoerie:** A,B: 6.1m de dentelle plate de 5cm de large. **D,E:** 1.4m d'élastique de 2cm de large.

Tailles	TP/XP	P	M	G	TG/XG	TTG/XXG
Françaises	32-34	36-38	40-42	44-46	48-50	52-54
Européen	30-32	34-36	38-40	42-44	46-48	50-52

**Haut A** - 115cm à 150cm\*\* - 1.1m; **Contraste A** - 115cm à 150cm\*\* - 1.1m.

Haut B							
115cm*	1.5	1.6	1.6	1.8	1.9	1.9	m
150cm*	0.8	1.0	1.0	1.2	1.3	1.3	"

Haut C							
115cm*	2.0	2.1	2.2	2.3	2.4	2.6	m
150cm*	1.4	1.5	1.6	1.8	2.1	2.2	"

Jupe D							
115cm*	3.6	3.9	4.6	5.0	5.0	5.0	m
150cm*	2.6	2.6	2.6	2.6	2.6	2.6	"

**Pantalon E** - 115cm à 150cm\* - 2.6m.

## MESURES DES VÊTEMENTS FINI

**Jupe D Largeur** 209 214 219 227 237 248 cm

**Largeur, chaque jambe**

**Pantalon E** 65 67.5 70 72.5 75 77.5 cm

**Longueur - dos, taille à l'ourlet**

**Jupe D** 107 107 107 107 107 107 cm

**Longueur - côté, taille à l'ourlet**

**Pantalon E** 112 112 112 112 112 112 cm

\*with nap \*\*without nap \*\*\*with or without nap

\*avec sens \*\*sans sens \*\*\*avec ou sans sens



A



B



C



D



E



F



G



H



I



J



K



L



M



N

McCall's  
by design

McCall's ©2025 a division of IG Design Group Americas Inc. • Atlanta, GA 30342 USA [www.thedesigngroup.com](http://www.thedesigngroup.com) • All Rights Reserved. [www.mccall.com](http://www.mccall.com) • Made in the U.S.A. Fabriqué aux États-Unis.

To be used for individual private home use only and not for commercial or manufacturing purposes. • A usage privé seulement et non à des fins commerciales ou de production en série. • Para uso privado solamente, no se puede utilizar con propósitos de comercialización o de producción en serie.

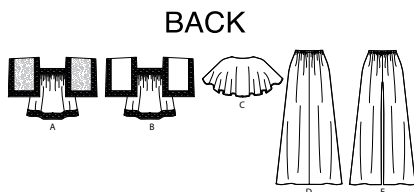
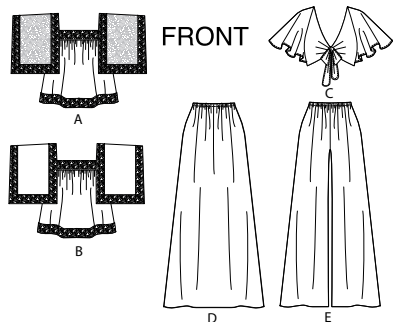
M8257

Page 1 of 4

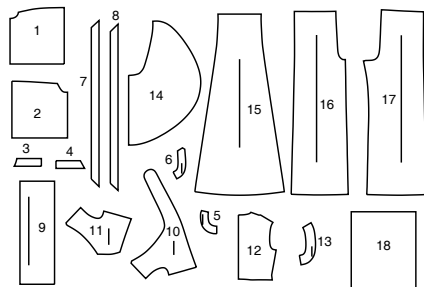
McCall's®

English

1-800-782-0323

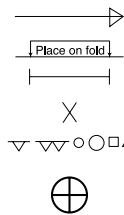


## 18 PATTERN PIECES



- 1 FRONT A,B
- 2 BACK A,B
- 3 FRONT BAND A,B
- 4 BACK BAND A,B
- 5 FRONT ARMHOLE FACING
- 6 BACK ARMHOLE FACING
- 7 SLEEVE BAND #1 A,B
- 8 SLEEVE BAND #2 A,B
- 9 SLEEVE A,B
- 10 FRONT C
- 11 FRONT FACING C
- 12 BACK C
- 13 BACK ARMHOLE FACING C
- 14 CAPE C
- 15 SKIRT FRONT AND BACK D
- 16 FRONT E
- 17 BACK E
- 18 BLOCK FOR EMBROIDERY

## PATTERN MARKINGS



**GRAINLINE:** Place on straight grain of fabric, parallel to selvage or fold.

**FOLDLINE:** Place line on fold of fabric.

**BUTTONHOLE MARKING:** Indicates exact length and placement of buttonholes.

**BUTTON MARKING:** Indicates button placement.

**NOTCHES AND SYMBOLS:** For matching seams and construction details.

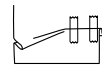
Indicates the Bustline, Waistline, Hip and/or Biceps. Measurements refer to circumference of Finished Garment (Body Measurement + Wearing Ease + Design Ease). Adjust pattern if necessary. The measurement excludes pleats, tucks, darts and seam allowances.

**SEAM ALLOWANCE:** 5/8" (1.5cm) included unless otherwise indicated, but not printed on tissue.

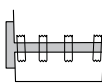
## ADJUST IF NECESSARY

Lengthen or Shorten at adjustment lines (==) or where indicated on pattern. If substantial length is added, you may need to purchase additional fabric.

**TO SHORTEN:** Crease along adjustment line. Make a fold half the amount needed. Tape in place.



**TO LENGTHEN:** Slash between adjustment lines. Spread amount as needed, keeping edges parallel. Tape over paper.



When Alteration lines are not on tissue, lengthen or shorten at lower edge.

## CUTTING AND MARKING

**SHRINK FABRIC** if not labeled pre-shrunk. Press.

**CIRCLE LAYOUT** for View, Size, Fabric Width.

Use **WITH NAP** layout for fabrics with one-way designs, nap, pile or surface shading. Because most knits have surface shading, a with nap layout is used.

For **DOUBLE THICKNESS (WITH FOLD)** - fold fabric with right sides together.

**\* DOUBLE THICKNESS (WITHOUT FOLD)** - For fabrics with nap, fold fabric crosswise, right sides together. Mark as shown. Cut along crosswise fold of fabric (A). Turn upper layer 180° so arrows go in same direction and place over lower layer, right sides together (B).

For **SINGLE THICKNESS** - place fabric right side up. (For Fur Pile fabrics, place pile side down.)

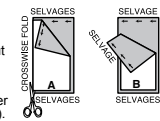
★ Cut other pieces first, allowing enough fabric to cut this piece. Open fabric. For "Cut 1" pieces, cut piece once on single layer of fabric with piece face up on right side of fabric.

Pattern may have cutting lines for several sizes. Select the proper cutting line or pattern pieces for your size.

Before **CUTTING** place all pieces on fabric according to layout. Pin. (**Layouts show approximate position of pattern pieces; position may vary according to your pattern size.**) Cut **ACCURATELY**, cutting notches outward.

Before removing pattern, **TRANSFER MARKINGS** and lines of construction to Wrong Side of fabric, using the Pin and Chalk Pencil method or Tracing Paper and Dressmaker Wheel. Markings needed on right side of fabric should be thread traced.

**NOTE:** Broken-line boxes (a! b! c!) in layouts represent pieces cut by measurements provided.



## CUTTING LAYOUTS

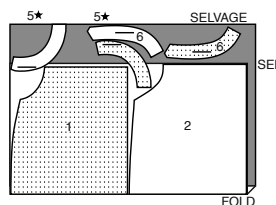
RIGHT SIDE OF PATTERN	WRONG SIDE OF PATTERN	RIGHT SIDE OF FABRIC	WRONG SIDE OF FABRIC

**TOP A,B:** pieces: 3,4,7,8 are cut from flat lace

## TOP A

use pieces: 1,2,5,6

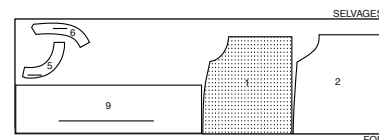
45", 60" (115, 150 cm)  
with or without nap  
all sizes



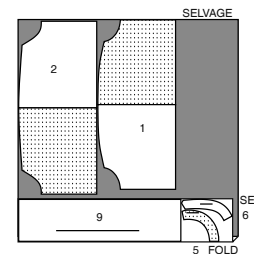
## TOP B

use pieces: 1,2,5,6,9

45" (115CM)  
with or without nap  
all sizes



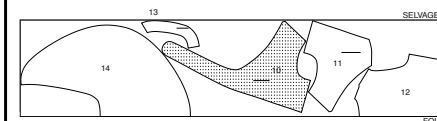
60" (150CM)  
with or without nap  
all sizes



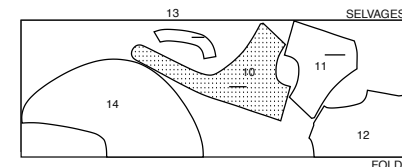
## TOP C

use pieces: 10,11,12,13,14

45" (115CM)  
with or without nap  
all sizes

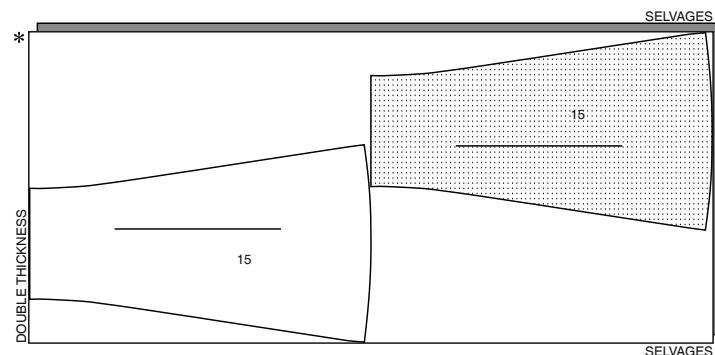
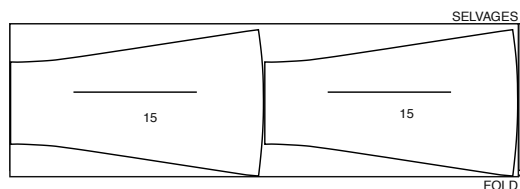


60" (150CM)  
with or without nap  
all sizes

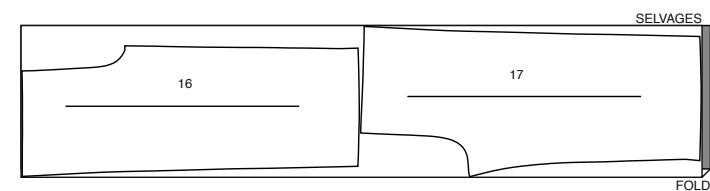
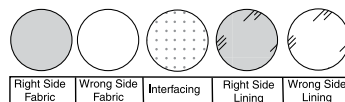


**SKIRT D**

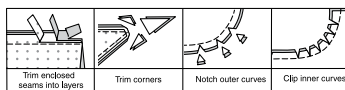
use piece: 15

45" (115CM)  
with or without nap  
all sizes60" (150CM)  
with or without nap  
all sizes**PANTS E**

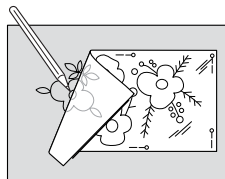
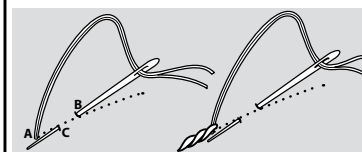
use pieces: 16,17

45", 60" (115, 150 cm)  
with or without nap  
all sizes**SEWING INFORMATION****FABRIC KEY****SEAM ALLOWANCES**

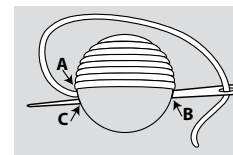
Use 5/8" (1.5cm) seam allowances unless otherwise indicated.

**PIN AND FIT**Pin or baste seams, **RIGHT SIDE TOGETHER**, matching notches. Fit garment before stitching major seams.**PRESS**

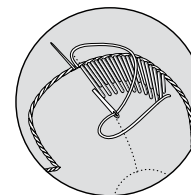
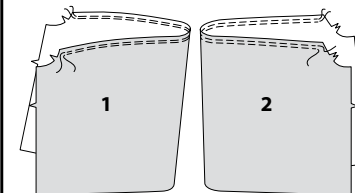
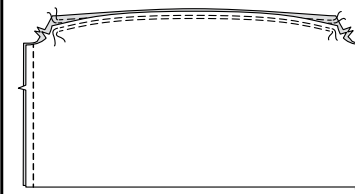
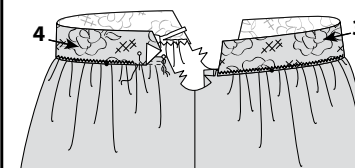
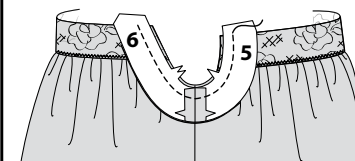
Press seam allowances flat; then open unless otherwise stated. Clip where necessary so they lie flat.

**GLOSSARY**Sewing terms appearing in **BOLD TYPE** in Sewing Instructions are explained below.**INVISIBLE STITCH** - Turn edge down about 1/4" (6mm); make a small diagonal stitch by picking up one thread of garment, then one thread of hem or facing.**FINISH** - Stitch 1/4" (6mm) from raw edge. Turn under along stitching and stitch close to fold.**NARROW HEM** - Press up hem, easing in fullness if necessary. Press under raw edges to meet crease. Stitch close to pressed edge.**SLIPSTITCH** - Slide needle through a folded edge, then pick up a thread of underneath fabric.**TRIM** - Cut seam allowance 1/4" (6mm) from stitching.**SEWING DIRECTIONS****General Instructions****Embroidery****NOTE:** Making a Trial Test Sample on a piece of fabric is recommended, before working on the finished garment. Use embroidery hoop to hold fabric firmly in place while sewing.Cut out motif groups from the **BLOCK FOR EMBROIDERY** (18).**TRANSFER MARKINGS** - Place motif, face-up on the fabric, following sewing directions. Pin in place. Using tailor chalk, pencil or washable pen, lightly transfer the markings onto fabric.Work all stems of flowers and outer edges of petals in an **OUTLINE STITCH**.Work leaves, berries and centers of flowers in a **SATIN STITCH**.Work flower petals in **LONG AND SHORT STITCH**.**OUTLINE STITCH** - For outline stitching, work with as many threads as instructed or as desired and use a large eyed needle. Bring thread to **RIGHT** side at A, down at B, up at C, etc. Always hold thread in the same position either all above or all below the needle for an even line.

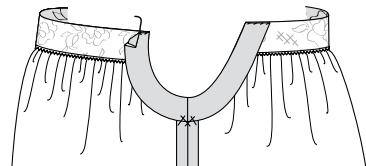
OUTLINE STITCH

**SATIN STITCH** - The embroidery stitches should be close enough to one another to cover the area **WITHOUT OVERLAPPING THE THREAD**. Bring the thread from point A, down to B, up at C, down at D, etc.

SATIN STITCH

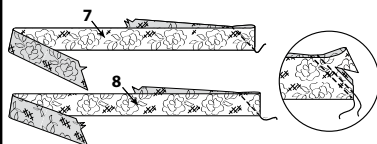
**LONG AND SHORT** - Starting at the center of the motif, along outer edge, make a series of long and short stitches similar to a satin stitch. Return to the center and work in the opposite direction to complete the first row of stitches. Because the first row is staggered, all other rows which will consist only of long stitches, will also be staggered, creating a blended look between stitches. On the final row line up the stitches with the edge of your shape.**TOP A OR B****Front and Back****1.** To gather upper edge of **FRONT** (1) and **BACK** (2), stitch along seam line and again 1/4" (6mm) away in seam allowance using long machine stitches.**2.** Stitch front to back at sides.**Band and Armhole Facing****3.** With right side up, pin **FRONT BAND** (3) and **BACK BAND** (4) to upper edges of top having ends even, lower edge of band along seam line, and matching small circles. Adjust gathers. Secure thread ends. Stitch bands in place, using a medium width zig-zag stitch. **TRIM.****4.** Stitch **FRONT ARMHOLE FACING** (5) to **BACK ARMHOLE FACING** (6) at sides, matching notches. **FINISH** outer curved edge. Pin facings to armhole, with right sides together, matching notches and side seam. Stitch. **TRIM.**

5. Press facing to the inside, pressing under upper edge. **SLIPSTITCH** pressed edge of facing to band. Catch-stitch at side seams.



### Sleeve and Sleeveband

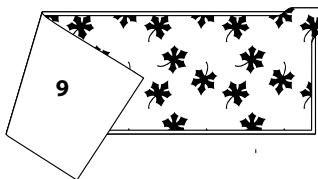
6. To miter sleevebands, fold **SLEEVEBAND** (7) and **SLEEVEBAND** (8) right sides together, matching stitching lines. Stitch along stitching lines. Stitch again 1/8" (3mm) away. **TRIM**. Press seam to one side.



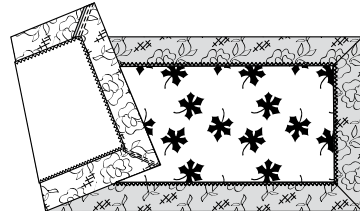
7. Stitch ends sleevebands together, matching notches. Press. Trim away excess seam allowance at point.



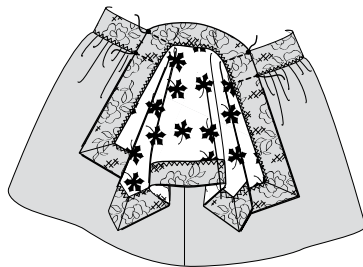
8. Press all edges of **SLEEVE** (9) to the outside along 1/4" (6mm) seam lines.



9. With right sides up, pin inner edges of sleeveband 1/4" (6mm) over sleeve, matching corners and large circle. Baste. Stitch sleeveband in place, using a medium width zig-zag stitch.

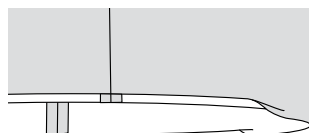


10. With right sides up, pin sleeve to lap line indicated on sleeveband, matching small and large circles. Stitch sleeve band along stitching line, through all thicknesses.

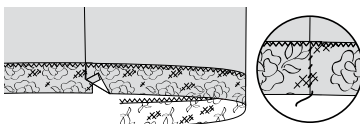


### Finishing Lower Edge

11. Press lower edge of garment to the outside along 1/4" (6mm) seam line.

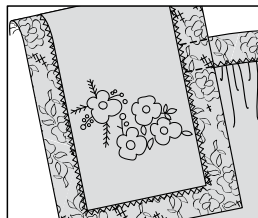


12. With right sides up, pin lace 1/4" (6mm) over pressed edge, turning under and lapping end at one side seam. Stitch lace in place using a medium width zig-zag stitch. **SLIPSTITCH** ends of lace together.



### MOTIF VIEW B

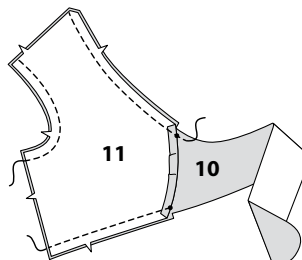
13. On outside, from **BLOCK FOR EMBROIDERY** (18), center motifs marked **View B** Sleeve Left Side, and **View B** Sleeve Right Side along the front edge of corresponding sleeve. **TRANSFER MARKINGS**. Using three strands of the embroidery thread, embroider your motif as shown on envelope or as desired.



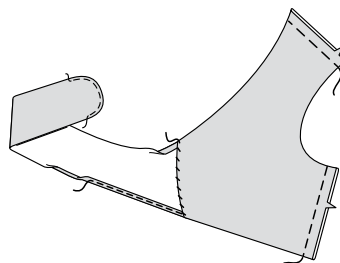
### TOP C

#### Front

1. Press under front edge of **FRONT FACING** (11). Pin front facing to **FRONT** (10), with right sides together, matching symbols. Stitch along neck, armhole and lower edge. **TRIM**. Clip curves.

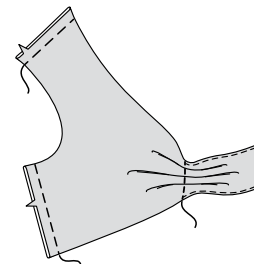


2. Turn facing to inside. Press. Baste raw edges together. Slipstitch pressed edge of facing to front. To ease curved edge of tie, stitch 1/8" (3mm) from raw edge using long machine stitches. Finish tie with a 3/8" (1cm) **NARROW HEM**, easing in fullness by pulling thread ends along curve.



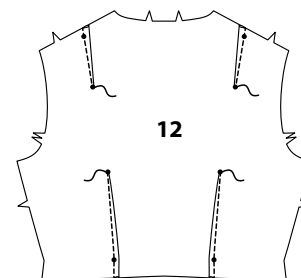
### Pleats

3. On outside, bring pleat lines together in direction of arrows. Baste. Stitch along broken line through all thicknesses.



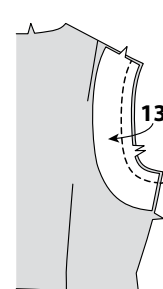
### Back

4. To make darts in **BACK** (12), with **RIGHT** sides together, fold the fabric through the center of the dart, bringing broken lines and small dots together. Stitch the dart from wide end to point. Press toward center.

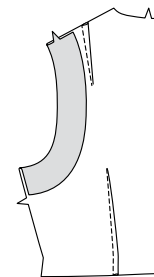


### Armhole Facing

5. **FINISH** long un-notched edge of **BACK ARMHOLE FACING** (13). With right sides together, stitch facing to back armhole, matching notches. **TRIM**.

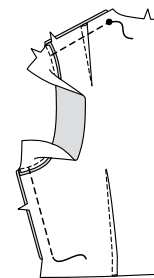


6. Turn facing to the inside.

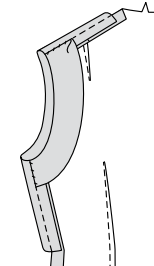


### Shoulder and Side Seams

7. Open out back armhole facing. Stitch back to front at shoulders and side seams. Press seam allowances toward back.



8. Turn facing to inside again, pressing under ends at shoulder and side seam. **SLIPSTITCH** facing to seams.

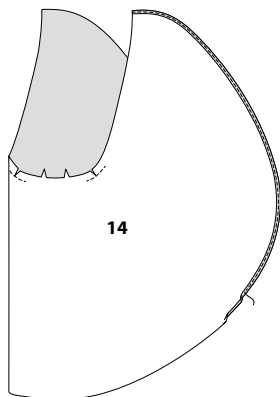


**9. FINISH** raw edge of hem. Turn up hem along hemline, turning under ends at sides. Hand-baste close to fold. **INVISIBLE STITCH** hem in place. **SLIPSTITCH** facing ends to sides seams.

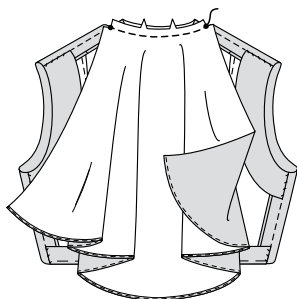


Cape

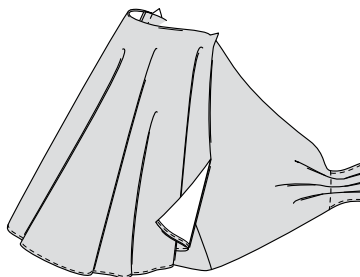
**10.** Reinforce neck edge of CAPE (14) by stitching 1" (2.5cm) each side of large circle. Clip to large circle. Finish outer un-notched edge with a 3/8" (1cm) **NARROW HEM**.



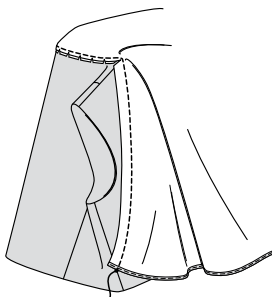
**11.** Pin cape to neck edge, with right side of cape to wrong side of top, matching notches and large circles. Stitch neck edge between large circles. **TRIM.** Clip curves.



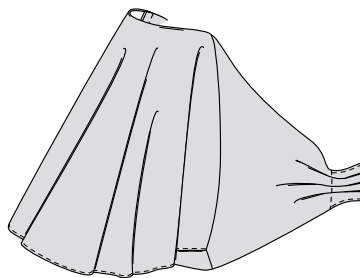
**12.** Turn cape to outside, over neck edge seam. Press.



**13.** Lift up cape. Pin cape to front, with right sides together, having seam line on cape over stitching line on front, and matching small circles at side seams. Stitch through all thicknesses.

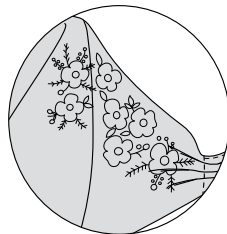


**14.** Turn cape over seam. Press.



# **MOTIF**

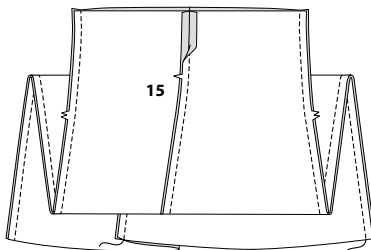
**15.** From BLOCK FOR EMBROIDERY (18), use motifs marked **View C.** On outside, center large motif on front; smaller motif on front-edge of cape. **TRANSFER MARKINGS.** Using three strands of the embroidery thread, embroider your motif as shown on envelope or desired. Opening out folds of pleats in General Directions.



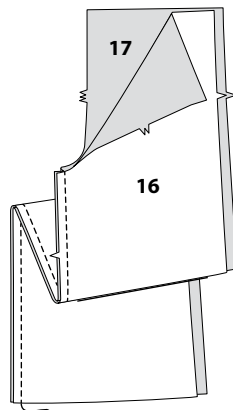
## SKIRT D OR PANTS E

### Seams

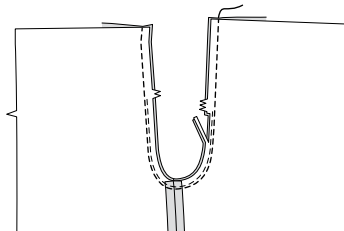
**1. FOR SKIRT D -** Stitch center front and center back seams of **FRONT AND BACK** (15), matching double notches. Stitch side seams, matching single notches.



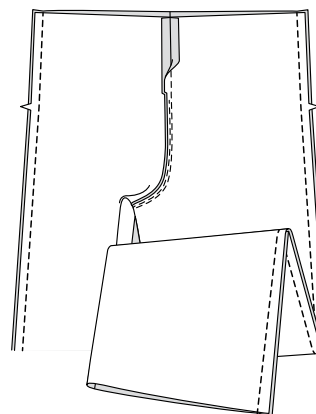
**2. FOR PANTS E -** Stitch **FRONT** (16) to **BACK** (17) at inside leg edges.



**3.** Stitch center seam, matching inside leg seam. To reinforce curve, stitch again, 1/8" (3mm) away, within seam allowance. **TRIM** between notches.

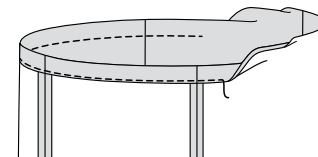


**4.** Stitch back to front at sides.

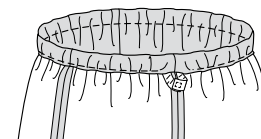


## Continue as Follows for D or E

**5.** Turn upper edge to inside along foldline. Press under 1/4" (6mm) on raw edge. Stitch close to pressed edge, leaving an opening to insert elastic.



**6.** Cut elastic a comfortable waist measurement, plus 1/2" (1.3cm). Insert elastic through casing. Lap ends 1/2" (1.3cm). Stitch securely.

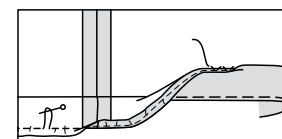


**7.** Stitch opening in casing.



## Hem

**8.** Turn up hem. Baste close to fold. Stitch 1/4" (6mm) from raw edge, using a long machine-stitch. Pull up stitching, so hem will lie flat. Press, shrinking out fullness. Press under edge along stitching. **INVISIBLE STITCH** hem in place.





# Congrats!

You've completed your sewing adventure

---

## SHARE YOUR LOOK



Post your pattern and tag us using [#simplicitypatterns](#)  
[@simplicity\\_creative\\_group](#)  
[@simplicitymccallsuk](#)  
[@simplicitymccallsaustralia](#)  
for a chance to be featured on our social media.

Look for more PDF patterns at [simplicity.com](#) or for customers outside the U.S. and Canada visit [sewdirect.com](#) and [sewdirect.com.au](#)

Have a question or need help with your sewing project contact us:  
[Simplicity.com](#)    [Sewdirect.com](#)    [Sewdirect.com.au](#)

**McCall's**  
by **design**<sub>group</sub>

McCall's ©2025 a division of IG Design Group Americas Inc. • Atlanta, GA 30342 USA [www.thedesigngroup.com](#) • All Rights Reserved. [www.mccall.com](#) • Made in the U.S.A. Fabriqué aux États-Unis.  
To be used for individual private home use only and not for commercial or manufacturing purposes. • A usage privé seulement et non à des fins commerciales ou de production en série. • Para uso privado solamente, no se puede utilizar con propósitos de comercialización o de producción en serie.