

McCall's[®] | by design_{group} M8252



>> MISSES' DRESSES
SKILL LEVEL: AVERAGE



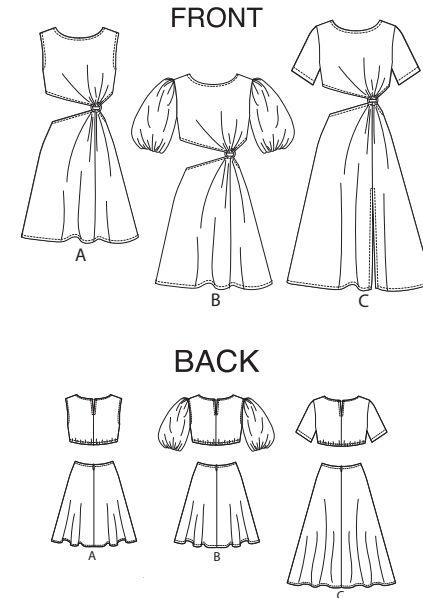
PDF PATTERNS

THINGS YOU NEED:

> **A,B,C:** One Pkg. of 1/2" (1.3cm) Wide Single Fold Bias Tape, One 9" (23cm) Invisible Zipper, 7/8 yd. (0.7m) of 3/8" (1cm) Wide Elastic, Two Hooks and Eyes.

SUGGESTED FABRICS:

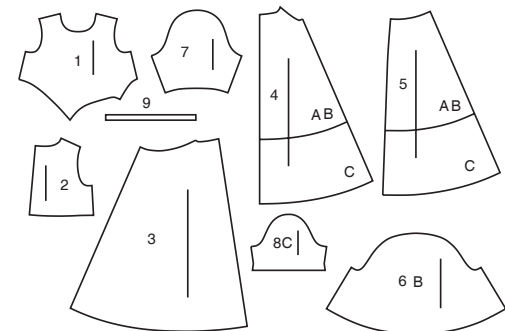
> Cotton Blends, Poplin, Taffeta, Sateen.



Your printed tile pieces should be assembled before you move on to this step!

PIECES (9)

- 1 BODICE FRONT - A,B,C
- 2 BODICE BACK - A,B,C
- 3 SKIRT RIGHT FRONT - A,B,C
- 4 SKIRT LEFT FRONT - A,B,C
- 5 SKIRT BACK - A,B,C
- 6 SLEEVE - B
- 7 SLEEVE STAY - B
- 8 SLEEVE - C
- 9 ELASTIC GUIDE



YARDAGE CHARTS

SIZES	6	8	10	12	14	16	18	20	22	24	
DRESS A											
45"*	2 $\frac{1}{8}$	2 $\frac{1}{8}$	2 $\frac{1}{8}$	2 $\frac{1}{4}$	2 $\frac{1}{4}$	2 $\frac{3}{8}$	2 $\frac{3}{8}$	2 $\frac{1}{2}$	2 $\frac{1}{2}$	2 $\frac{5}{8}$	yds.
60"*	1 $\frac{1}{2}$	1 $\frac{1}{2}$	1 $\frac{1}{2}$	1 $\frac{1}{2}$	1 $\frac{5}{8}$	1 $\frac{7}{8}$	1 $\frac{7}{8}$	2	2	2	"
115cm*	2.0	2.0	2.0	2.1	2.1	2.1	2.2	2.2	2.3	2.4	m.
150cm*	1.3	1.4	1.4	1.4	1.5	1.8	1.8	1.9	1.9	1.9	"
DRESS B											
45"*	3 $\frac{3}{8}$	3 $\frac{1}{2}$	3 $\frac{1}{2}$	3 $\frac{5}{8}$	3 $\frac{5}{8}$	3 $\frac{3}{4}$	3 $\frac{3}{4}$	3 $\frac{7}{8}$	4	4 $\frac{1}{8}$	yds.
60"*	2 $\frac{1}{2}$	2 $\frac{1}{2}$	2 $\frac{5}{8}$	2 $\frac{5}{8}$	2 $\frac{5}{8}$	2 $\frac{3}{4}$	2 $\frac{7}{8}$	2 $\frac{7}{8}$	3	3	"
115cm*	3.1	3.2	3.2	3.4	3.4	3.5	3.5	3.6	3.7	3.8	m.
150cm*	2.3	2.3	2.3	2.4	2.4	2.6	2.7	2.7	2.7	2.8	"
DRESS C											
45"*	3 $\frac{1}{2}$	3 $\frac{1}{2}$	3 $\frac{5}{8}$	3 $\frac{5}{8}$	3 $\frac{3}{4}$	3 $\frac{3}{4}$	3 $\frac{3}{4}$	3 $\frac{7}{8}$	4	4 $\frac{1}{4}$	yds.
60"*	2 $\frac{1}{2}$	2 $\frac{1}{2}$	2 $\frac{1}{2}$	2 $\frac{1}{2}$	2 $\frac{5}{8}$	2 $\frac{3}{4}$	2 $\frac{7}{8}$	3	3	3	"
115cm*	3.1	3.2	3.2	3.4	3.5	3.5	3.5	3.6	3.7	3.8	m.
150cm*	2.3	2.3	2.3	2.3	2.4	2.6	2.6	2.7	2.8	2.8	"

FINISHED GARMENT MEASUREMENTS

SIZES	6	8	10	12	14	16	18	20	22	24	
MEASUREMENT AT BUSTLINE											
DRESS A,B,C	33 $\frac{1}{2}$	34 $\frac{1}{2}$	35 $\frac{1}{2}$	37	39	41	43	45	47	49	ins.
	85	88	90	94	99	104	109	115	120	125	cm.
WIDTH, LOWER EDGE											
DRESS A,B	69 $\frac{1}{2}$	70 $\frac{1}{2}$	71 $\frac{1}{2}$	73	75	77	79	81	83	85	ins.
	177	179	182	186	191	196	201	206	211	216	cm.
DRESS C	92	93	94	95 $\frac{1}{2}$	97 $\frac{1}{2}$	99 $\frac{1}{2}$	101 $\frac{1}{2}$	102 $\frac{1}{2}$	104 $\frac{1}{2}$	106 $\frac{1}{2}$	ins.
	234	236	239	242	248	253	255	260	265	270	cm.

FINISHED GARMENT MEASUREMENTS

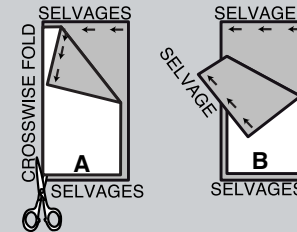
SIZES	6	8	10	12	14	16	18	20	22	24	
BACK LENGTH FROM BASE OF NECK											
DRESS A,B	35½	35¾	36	36¼	36½	36¾	37	37¼	37½	37¾	in.
	90	91	91.5	92	92.5	93	94	94.5	95	96	cm.
DRESS C	47½	47¾	48	48¼	48½	48¾	49	49¼	49½	49¾	in.
	121	121	122	122	123	124	125	125	126	126	cm.

BODY MEASUREMENTS

SIZES	6	8	10	12	14	16	18	20	22	24	
BUST	30½	31½	32½	34	36	38	40	42	44	46	in.
	77	80	83	87	92	97	102	107	112	117	cm.
WAIST	23	24	25	26½	28	30	32	34	37	39	in.
	58	61	64	67	71	76	81	87	94	99	cm.
HIP	32½	33½	34½	36	38	40	42	44	46	48	in.
	83	85	88	92	97	102	107	112	117	122	cm.
BACK WAIST LENGTH	15½	15¾	16	16¼	16½	16¾	17	17¼	17½	17¾	in.
	39.5	40	40.5	41.5	42	42.5	43	44	44.5	45	cm.

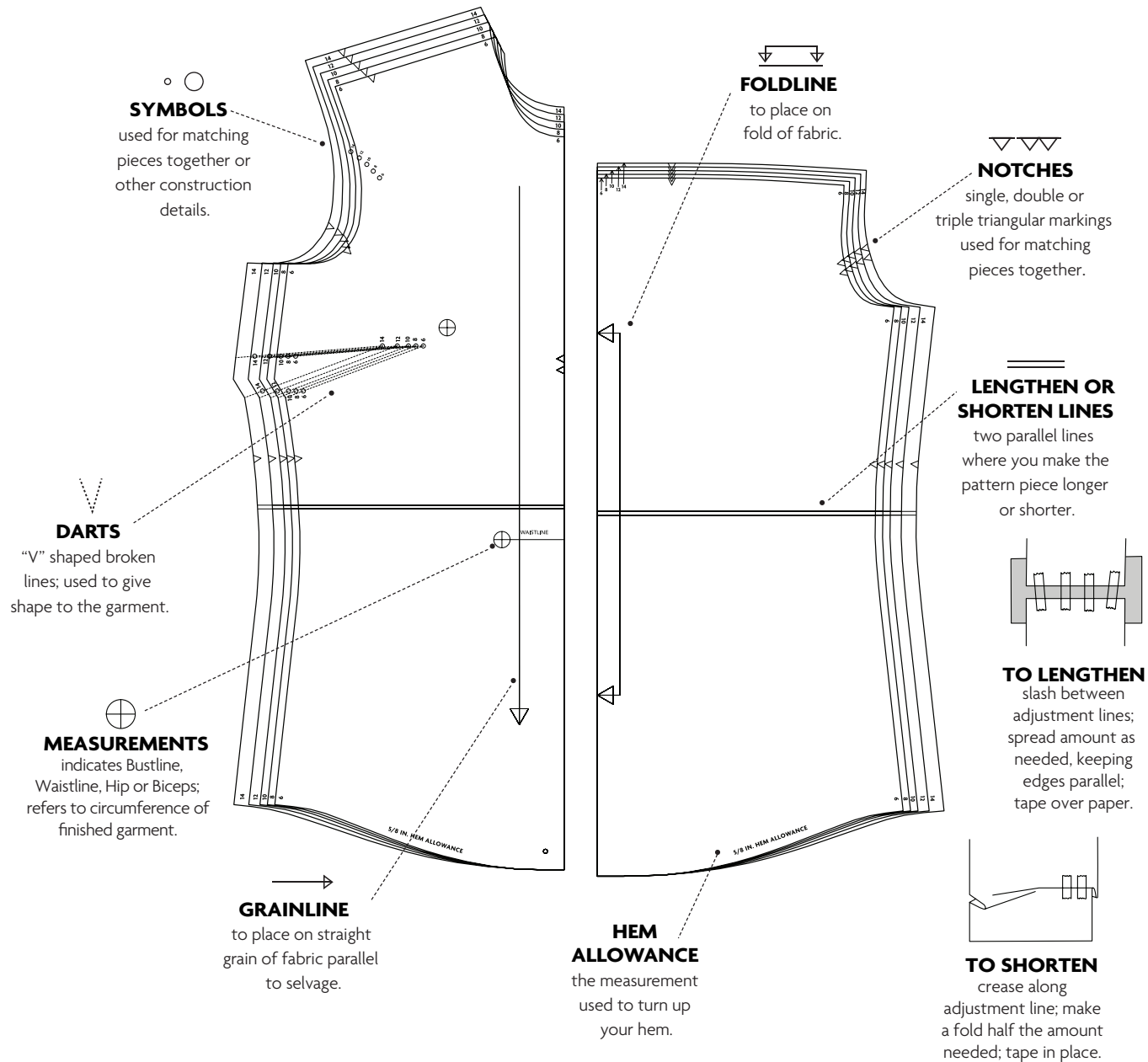
CUTTING AND MARKING

- > **SHRINK FABRIC** if not labeled pre-shrunk. Press.
- > **CIRCLE LAYOUT** for View, Size, Fabric Width.
- > Use **WITH NAP** layout for fabrics with one-way designs, nap, pile or surface shading. Because most knits have surface shading, a with nap layout is used.
- > For **DOUBLE THICKNESS (WITH FOLD)**, fold fabric with right sides together.
- > ***DOUBLE THICKNESS (WITHOUT FOLD)**, for fabrics with nap, fold fabric crosswise, right sides together. Mark as shown. Cut along crosswise fold of fabric (A). Turn upper layer 180° so arrows go in same direction and place over lower layer, right sides together (B).
- > For **SINGLE THICKNESS**, place fabric right side up. (For Fur Pile fabrics, place pile side down.)



- > Before **CUTTING**, place all pieces on fabric according to layout. Pin.
(Layouts show approximate position of pattern pieces; position may vary according to your pattern size.)
- > ★ Cut other pieces first, allowing enough fabric to cut this piece. Open fabric. Cut piece on single layer of fabric with piece face up on right side of fabric.
- > Cut accurately, cutting notches outward.
- > Before removing pattern, **TRANSFER MARKINGS** and lines of construction to **WRONG SIDE** of fabric, using Pin and Chalk Pencil method or Tracing Paper and Dressmaker Wheel. Markings needed on right side of fabric should be thread traced.
NOTE: Broken-line boxes (a! b! c!) in layouts represent pieces cut by measurements provided.
- > Prewash your fabric using a method that's suitable for the fabric type.
- > Fold fabric with right sides together, matching **SELVAGES**.
- > Pin your pattern pieces to the fabric as shown below and cut them out using a sharp pair of dressmaker's shears.

PATTERN MARKINGS

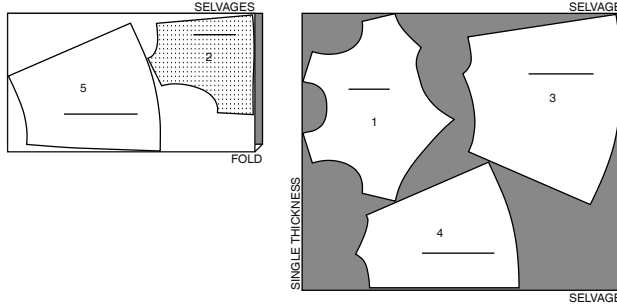


CUTTING LAYOUTS

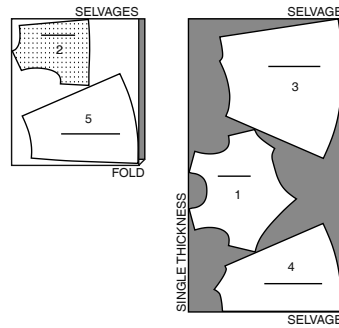
DRESS A

use pieces: 1,2,3,4,5

45" (115 cm)
with or without nap
all sizes



60" (150 cm)
with or without nap
sizes 6-8-10-12-14



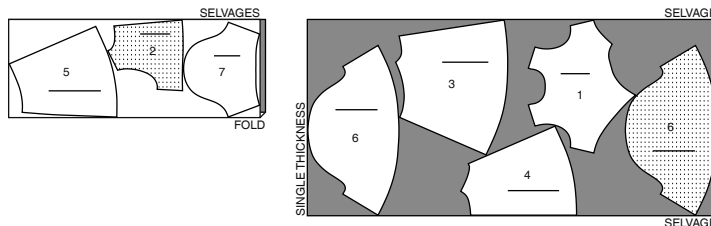
60" (150 cm)
with or without nap
sizes 16-18-20-22-24



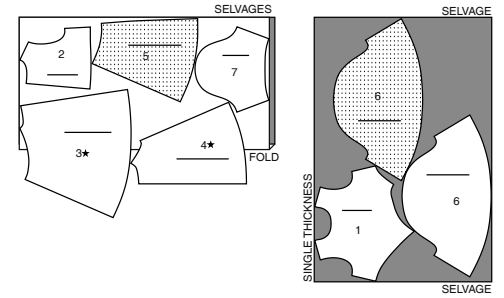
DRESS B

use pieces: 1,2,3,4,5,6,7

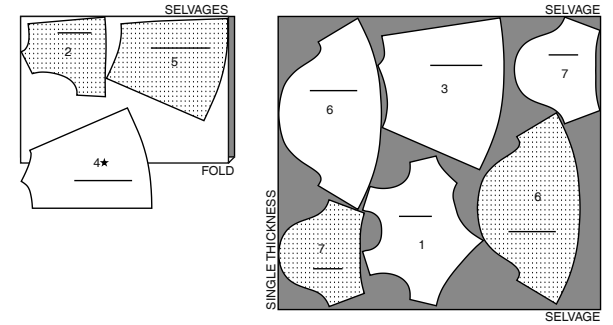
45" (115 cm)
with or without nap
all sizes



60" (150 cm)
with or without nap
sizes 6-8-10-12-14-16



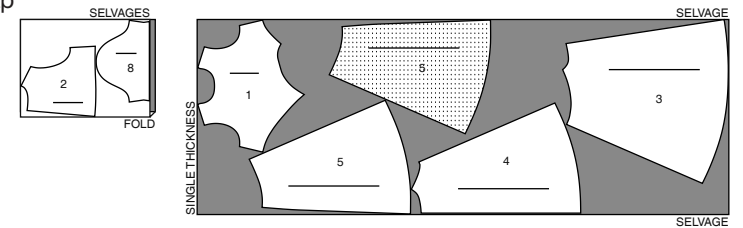
60" (150 cm)
with or without nap
sizes 18-20-22-24



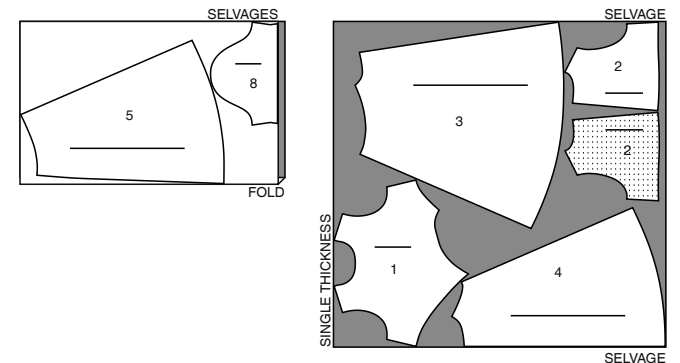
DRESS C

use pieces: 1,2,3,4,5,8

45" (115 cm)
with or without nap
all sizes



60" (150 cm)
with or without nap
all sizes



PATTERN PIECES WILL BE IDENTIFIED BY NUMBERS THE FIRST TIME THEY ARE USED.

SEWING INFORMATION

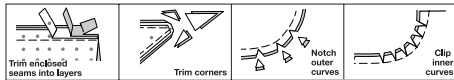
5/8" (1.5cm) SEAM ALLOWANCES ARE INCLUDED,
(unless otherwise indicated)

ILLUSTRATION SHADING KEY

Right Side	Wrong Side	Interfacing	Lining	Underlining

Pin or baste seams, right side together, matching notches. Fit garment before stitching major seams.

Press seam allowances flat; then open unless otherwise stated. Clip where necessary so they lie flat.



GLOSSARY

Sewing terms appearing in **BOLD TYPE** in Sewing Instructions are explained below.

EASESTITCH - Stitch along seamline, using long machine stitches. Pull thread ends when adjusting to fit.

NOTE: For sleeve caps, make a second row of long machine stitches 1/4" (6mm) away in seam allowance. for more control.

GATHER - Stitch along seamline and again 1/4" (6mm) away in seam allowance, using long machine stitches. Pull thread ends when adjusting to fit.

NARROW HEM - Turn in hem; press, easing in fullness if necessary. Open out hem. Turn in again so raw edge is along crease; press. Turn in along crease; stitch.

STAYSTITCH - Stitch 1/8" (3mm) from seamline in seam allowance (usually 1/2" (13mm) from raw edge).

TOPSTITCH - On outside, stitch 1/4" (6mm) from edge, seam or previous stitching, using presser foot as guide, or stitch where indicated in instructions.

UNDERSTITCH - Open out facing or underside of garment; stitch to seam allowance close to seam.

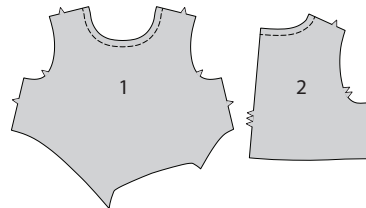
SEWING DIRECTIONS

DRESS A, B, C

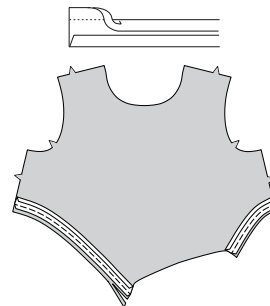
NOTE: Illustrated for **View A** unless otherwise indicated.

Bodice

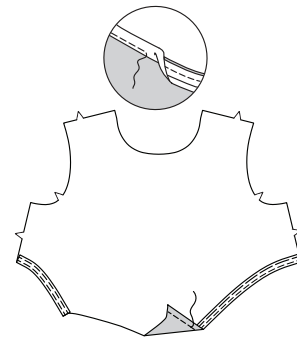
1. STAYSTITCH neck edge of Bodice Front (1) and Bodice Back (2) sections.



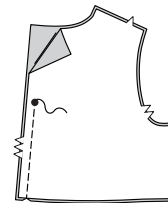
2. To finish lower side edges of bodice front, as shown, open out one edge of single fold bias tape. With **RIGHT** sides together, pin tape to bodice front having raw edges even. Stitch in 3/8" (1cm) seam. Trim seam; clip curves.



3. UNDERSTITCH tape. Turn tape to **INSIDE**. Press. Baste close to inner edge of tape.
On **OUTSIDE**, **TOPSTITCH** as basted.



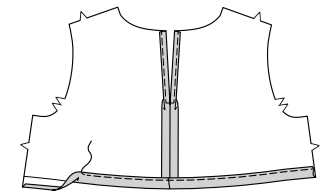
4. With **RIGHT** sides together, stitch Bodice Back (2) sections together at center back, leaving open above large dot.



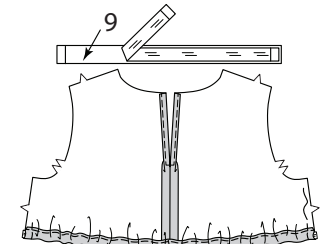
5. Turn in 5/8" (1.5cm) **NARROW HEM** at back opening edges, turning in 1/4" (6mm) on raw edge. Stitch, squaring stitching below large dot.



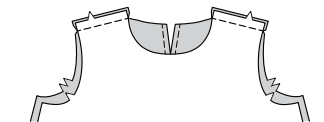
6. To form casing at lower edge of bodice back, turn edge to **INSIDE** along foldline, turning under 1/4" (6mm) on raw edge; press. Stitch close to edge, leaving ends open to insert elastic.



7. Cut elastic the measurement of Elastic Guide (9). Insert elastic through opening, having ends even with raw edges. Baste ends.

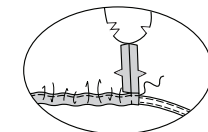


8. Stitch bodice back to bodice front at shoulders.

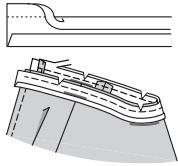


9. Stitch bodice back to bodice front at sides. Clip back seam allowances above casing.

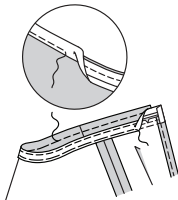
Press ends of casing toward front, pressing remainder of seam open. Sew ends of casing in place.



10. Open out one edge of single fold bias tape. With RIGHT sides together, pin tape to neck edge placing crease along seamline and having tape extending 3/8”(1cm) beyond back opening edges. Stitch. Trim seam allowance even with bias tape; clip curves.



11. UNDERSTITCH tape. Turn tape to INSIDE, turning under ends at back opening. Press. Baste close to inner edge of tape. On OUTSIDE, **TOPSTITCH** as basted.

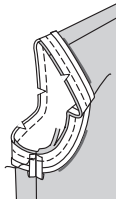


Armhole and Sleeve

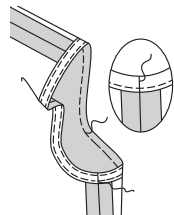
View A
12. Trim away 5/8”(1.5cm) from armhole edges of bodice.



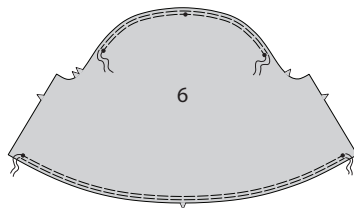
13. Open out one edge of single fold bias tape. With RIGHT sides together, pin tape to armhole edge having raw edges even, turning back ends to meet at side seam. Stitch in 3/8”(1cm) seam. Trim seam; clip curves.



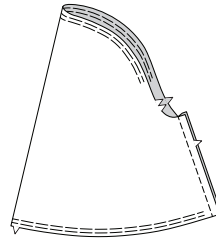
14. UNDERSTITCH tape. Turn tape to INSIDE; press. Baste close to inner edge of tape. On OUTSIDE, **TOPSTITCH** as basted.



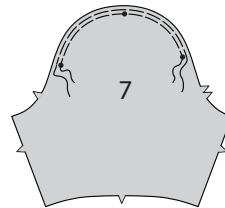
View B
15. GATHER upper edge of Sleeve (6) between outer small dots and lower edge between small dots.



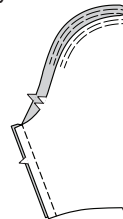
16. Stitch underarm seam in sleeve.



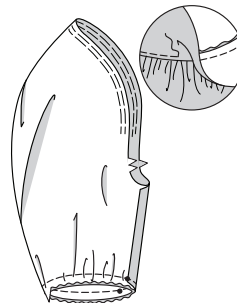
17. GATHER upper edge of Sleeve Stay (7) between outer small dots.



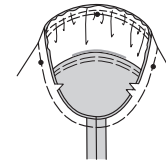
18. Stitch underarm seam in sleeve stay.



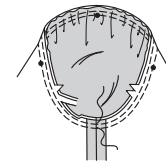
19. With RIGHT sides together, pin stay to sleeve at lower edge, matching seams, notches and small dots. Adjust gathers; baste. Stitch. Trim. **UNDERSTITCH** stay.



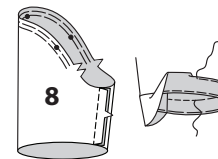
20. Turn stay to INSIDE. Hold bodice WRONG side out with armhole toward you. With RIGHT sides together, pin sleeve to armhole edge, matching underarm seams, notches and small dots. Pull up gather stitches to fit. To distribute stitches evenly, slide fabric along bobbin threads until there are no puckers or tucks on the seam line. Baste.



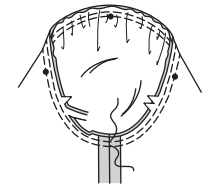
21. Pin sleeve stay to upper edge of sleeve, matching seams, notches and small dots. Adjust gathers; baste. Stitch armhole seam. Stitch again 1/4”(6mm) from first stitching. Trim seam close to stitching. Press only the seam allowance, shrinking out fullness.



View C
22. EASESTITCH upper edge of Sleeve (8) between notches. Stitch underarm seam. Press up hem. Turn under 1/4”(6mm) on raw edge. Baste close to inner edge. **TOPSTITCH** hem along basting.

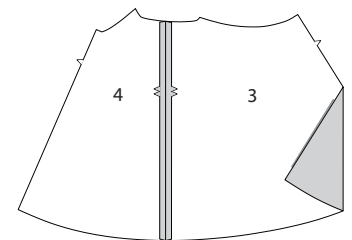


23. Hold bodice WRONG side out with armhole toward you. With RIGHT sides together, pin sleeve to armhole edge, matching underarm seams, notches and small dots. Pull up ease stitches to fit. To distribute stitches evenly, slide fabric along bobbin threads until there are no puckers or tucks on the seam line. Baste. Stitch. Stitch again 1/4”(6mm) from first stitching. Trim close to stitching.

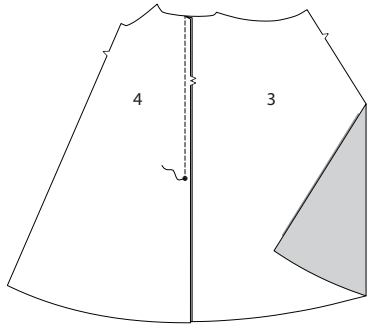


Skirt

24. Views A, B - With RIGHT sides together, pin Skirt Right Front (3) to Skirt Left Front (4), matching notches. Stitch.



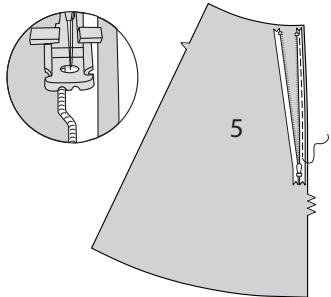
25. View C - With RIGHT sides together, pin Skirt Right Front (3) to Skirt Left Front (4), matching notches and large dots. Stitch, leaving open below large dot.



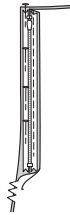
Views A, B, C

NOTE: Use special invisible zipper foot when stitching invisible zipper.

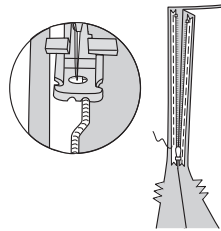
26. Open zipper. On outside, pin zipper to left Skirt Back (5) opening edge, face down in seam allowance, placing zipper stop 1/4”(6mm) down from seam line and zipper teeth on seamline. Position left-hand groove of zipper foot over teeth; stitch close to teeth, ending at large dot.



27. Close zipper. Pin remaining zipper tape to right skirt back opening edge, placing zipper teeth on seamline.



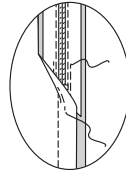
28. Open zipper. Position right-hand groove of zipper foot over teeth; stitch to large dot.



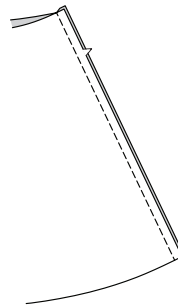
29. Close zipper. Slide zipper foot to on the left. Pin back sections together below zipper. Position and lower needle slightly above and to the left of zipper stitching at large dot. Stitch center back seam below large dot.



30. Stitch or hand sew each end of zipper tape to seam allowances, keeping back free when stitching.

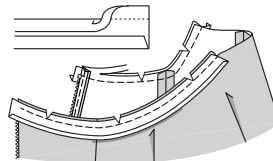


31. With RIGHT sides together, pin skirt back to skirt front at sides. Stitch.

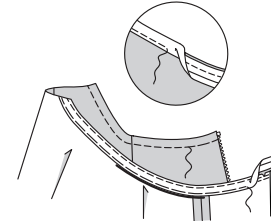


Finishing

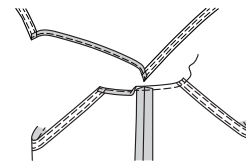
32. Open out one edge of single fold bias tape. With RIGHT sides together, pin tape to upper edge of skirt as shown, placing crease along seamline and having tape extending 3/8”(1cm) beyond back opening edges. Stitch. Trim bias tape even with seam allowance; clip curves.



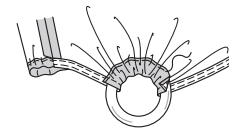
33. UNDERSTITCH tape. Turn tape to INSIDE, turning under ends at back opening. Press. Slip-stitch ends to zipper tape. Baste close to inner edge of tape. On OUTSIDE, Top-stitch as basted.



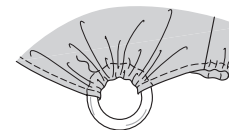
34. To finish casing edges for ring attaching lower edge of bodice and upper edge of skirt, stitch 1/4”(6mm) from raw edge. Turn under along stitching and stitch OR zig-zag over edge OR overlock/serge over edge.



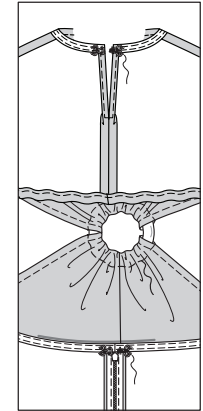
35. To form casing, slip lower edge of bodice through ring, turning to INSIDE along foldline. Baste edge in place.



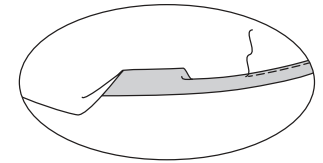
36. Using a zipper foot, on OUTSIDE, carefully stitch along the basting.



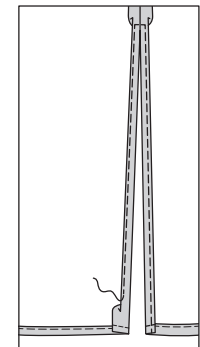
37. Attach the skirt to the ring in the same manner as bodice. Sew hook and eye to bodice back opening edges at neck. Sew hook and eye to skirt opening edges above zipper.



38. Turn up 5/8”(1.5cm) **NARROW HEM** at lower edge of skirt, turning in 1/4”(6mm) on raw edge. Stitch.



39. View C - Turn in 5/8”(1.5cm) **NARROW HEM** at front opening edges, turning in 1/4”(6mm) on raw edge. Stitch, squaring stitching above large dot.





Congrats!


You've completed your sewing adventure!

**SHARE
YOUR** look!



Post your pattern and tag us at
@MCCALLPATTERNCOMPANY and use #mccallpatterns
for a chance to be featured on our social media!

Look for more McCall's PDF patterns at **McCallPattern.com**

 1-800-255-2762

© 2022 IG Design Group Americas, Inc. | All Rights Reserved
Sold for individual home use only and not for commercial or manufacturing purposes.