



PDF PATTERNS

M8250

>> CHILDREN'S
TOPS AND
PANTS



02

PIECES AND
NOTIONS

03

CHARTS

05

CUTTING
LAYOUTS

07

PATTERN
MARKINGS

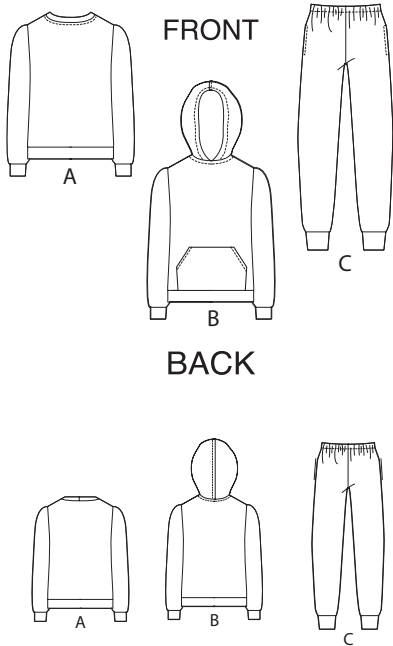
08

SEWING
INSTRUCTIONS

McCall's®

SKILL LEVEL: EASY

Find the Perfect Fit!



THINGS YOU NEED:

> C: $\frac{3}{4}$ yd. (0.7m) of 1" (2.5cm) Elastic.

SUGGESTED FABRICS:

> 35% Moderate Stretch Knits- Sweatshirt Fleece, French Terry, Minky Fleece, Fleece. Pocket Lining C: Tricot.

Your printed tile pieces should be assembled before you move on to this step!

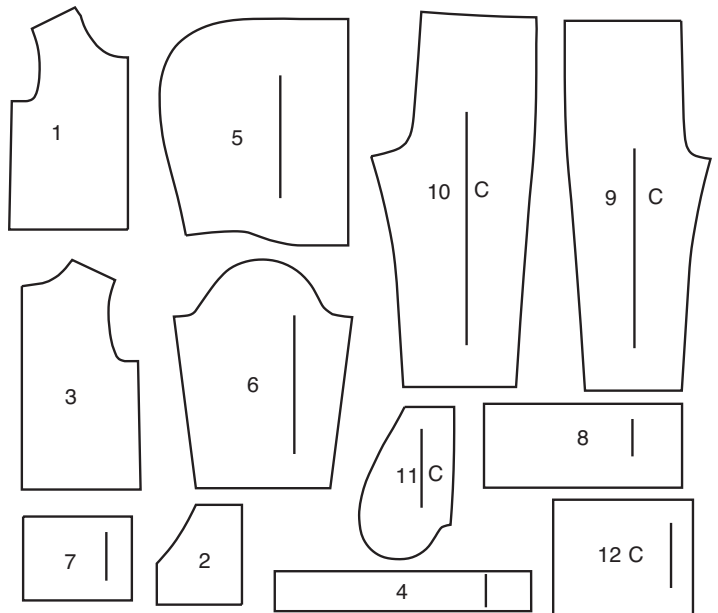
PIECES (12)

TOP A, B

- 1 FRONT
- 2 POCKET B
- 3 BACK
- 4 NECK BAND A
- 5 HOOD B
- 6 SLEEVE
- 7 SLEEVE BAND
- 8 LOWER BAND

PANTS C

- 9 FRONT
- 10 BACK
- 11 POCKET
- 12 LEG BAND



CHARTS

YARDAGE CHARTS

	CHILDREN'S			GIRLS'				
SIZES	3	4	5	6	7	8		
TOP A								
60"*	¾	¾	¾	⅞	⅞	⅞	yds.	
150cm*	0.6	0.7	0.7	0.7	0.8	0.8	m	
TOP B								
60"*	⅞	1	1	1	1⅞	1⅞	yds.	
150cm*	0.8	1.0	1.0	1.0	1.0	1.1	m	
PANTS C								
60"*	¾	¾	⅞	⅞	⅞	1	yds.	
150cm*	0.7	0.7	0.8	0.8	0.8	1.0	m	
LINING C - 60"*- ⅜ yd. 150cm*- 0.4m								

FINISHED GARMENT MEASUREMENTS

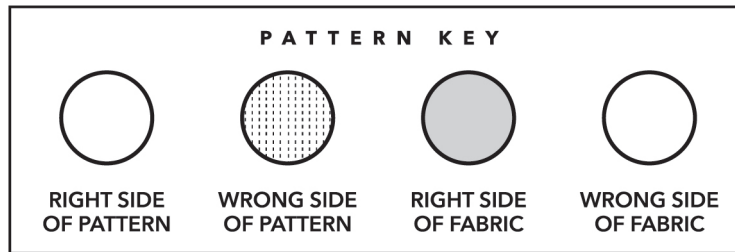
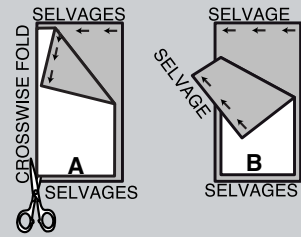
	CHILDREN'S			GIRLS'				
SIZES	3	4	5	6	7	8		
MEASUREMENT AT CHESTLINE								
TOP A,B	25½	26½	27½	28½	29½	30½	in.	
	65	67	70	72	75	77.5	cm	
MEASUREMENT AT HIPLINE								
PANTS C	25	25	26	27	28	29	in.	
	63.5	63.5	66	69	71	74	cm	
BACK LENGTH FROM BASE OF NECK								
TOP A,B	12	13½	15½	17½	19½	21½	in.	
	30.5	34	39	44.5	49.5	55	cm	
SIDE LENGTH FROM WAIST								
PANTS C	24	24	24	24	24	24	in.	
	61	61	61	61	61	61	cm	

BODY MEASUREMENTS

	CHILDREN'S				GIRLS		
SIZES	3	4	5	6	7	8	
CHEST	22	23	24	25	26	27	in.
	56	58.5	61	63.5	66	68.5	cm
WAIST	20½	21	21½	22	23	23½	in.
	52	53.5	54.5	56	58.5	59.5	cm
HIP	-	24	25	26	27	28	in.
	-	61	63.5	66	68.5	71	cm
BACK WAIST LENGTH	9	9½	10	10½	11½	12	in.
	23	24	25.5	26.5	29	30.5	cm

CUTTING AND MARKING

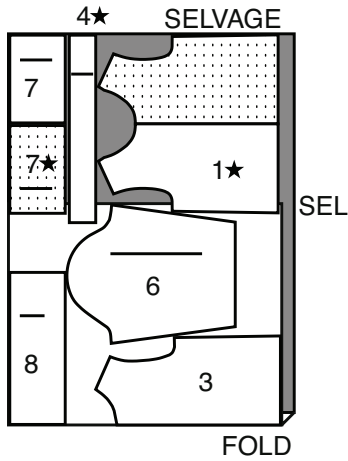
- > **SHRINK FABRIC** if not labeled pre-shrunk. Press.
- > **CIRCLE LAYOUT** for View, Size, Fabric Width.
- > Use **WITH NAP** layout for fabrics with one-way designs, nap, pile or surface shading. Because most knits have surface shading, a with nap layout is used.
- > For **DOUBLE THICKNESS (WITH FOLD)**, fold fabric with right sides together.
- > ***DOUBLE THICKNESS (WITHOUT FOLD)**, for fabrics with nap, fold fabric crosswise, right sides together. Mark as shown. Cut along crosswise fold of fabric (A). Turn upper layer 180° so arrows go in same direction and place over lower layer, right sides together (B).
- > For **SINGLE THICKNESS**, place fabric right side up. (For Fur Pile fabrics, place pile side down.)



- > Before **CUTTING**, place all pieces on fabric according to layout. Pin.
(Layouts show approximate position of pattern pieces; position may vary according to your pattern size.)
 - > ★ Cut other pieces first, allowing enough fabric to cut this piece. Open fabric. Cut piece on single layer of fabric with piece face up on right side of fabric.
 - > Cut accurately, cutting notches outward.
 - > Before removing pattern, **TRANSFER MARKINGS** and lines of construction to **WRONG SIDE** of fabric, using Pin and Chalk Pencil method or Tracing Paper and Dressmaker Wheel. Markings needed on right side of fabric should be thread traced.
- NOTE:** Broken-line boxes (a! b! c!) in layouts represent pieces cut by measurements provided.
- > Prewash your fabric using a method that's suitable for the fabric type.
 - > Fold fabric with right sides together, matching **SELVAGES**.
 - > Pin your pattern pieces to the fabric as shown below and cut them out using a sharp pair of dressmaker's shears.

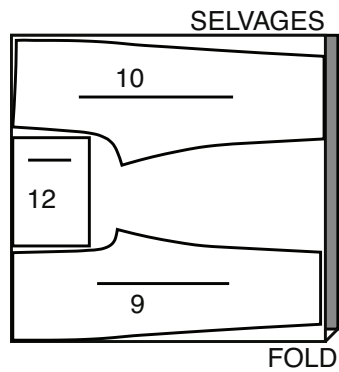
1 TOP A

USE PIECES: 1,3,4,6,7,8
 60" (150 CM)
 WITH NAP
 ALL SIZES



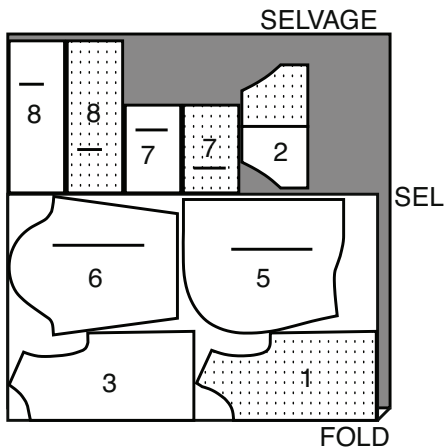
3 PANTS C

USE PIECES: 9,10,12
 60" (150 CM)
 WITH NAP
 ALL SIZES



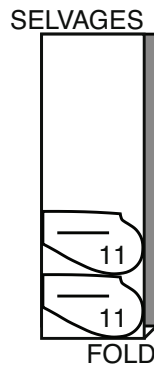
2 TOP B

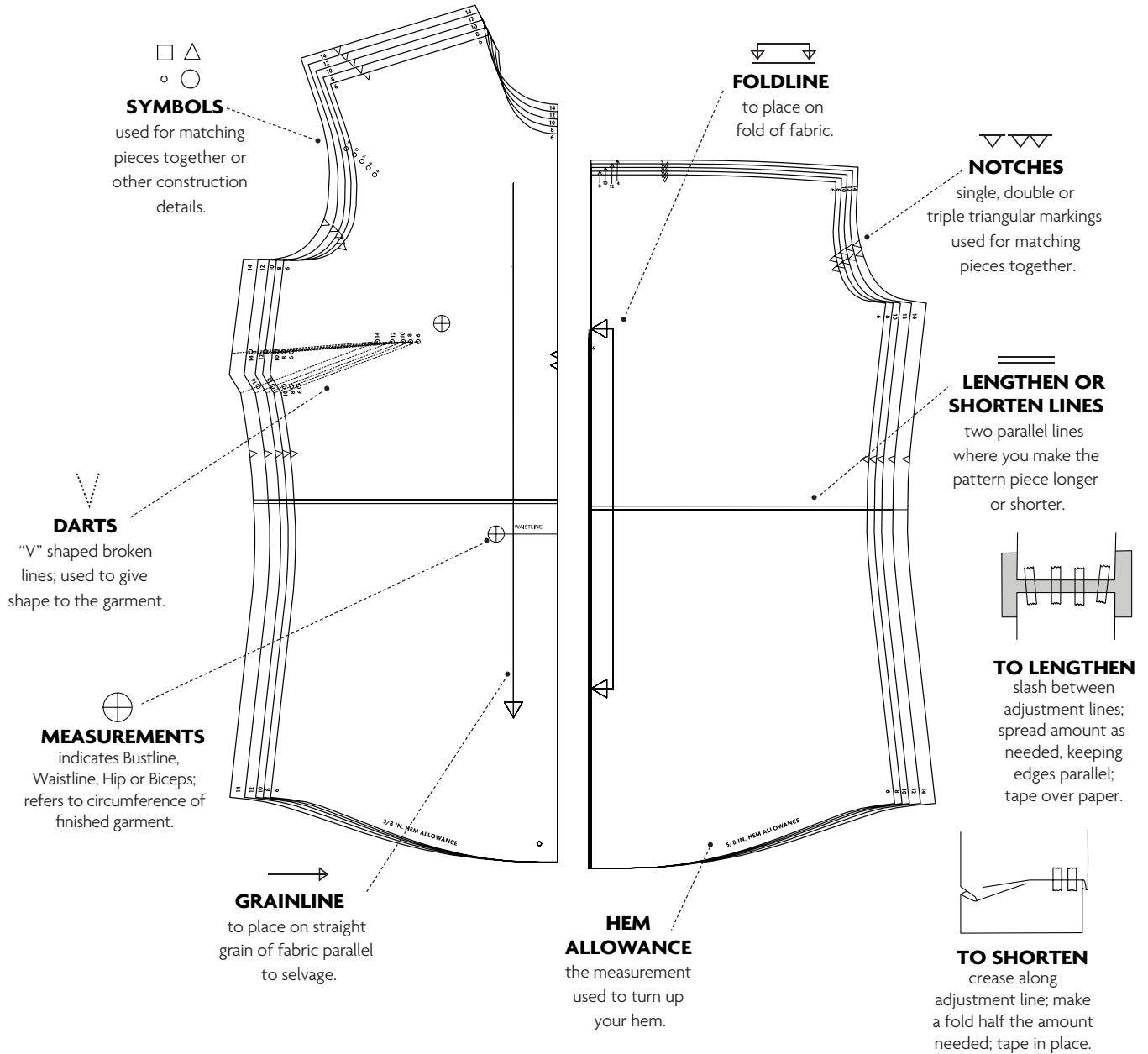
USE PIECES: 1,2,3,5,6,7,8
 60" (150 CM)
 WITH NAP
 ALL SIZES



4 LINING C

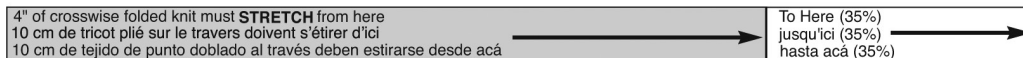
(TRICOT)
 USE PIECE: 11
 60" (150 CM)
 WITH NAP
 ALL SIZES

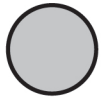
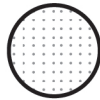




STRETCH GAUGE - MEASURING FABRIC STRETCH

Whenever you see a minimum stretch requirement on one of the sewing patterns, it is important that you measure the fabric stretch in both length and width!



FABRIC KEYRIGHT SIDE
FABRICWRONG SIDE
FABRIC

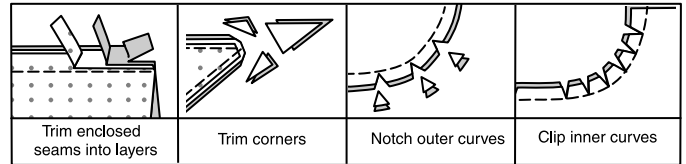
INTERFACING

RIGHT
SIDE LININGWRONG
SIDE LINING

PATTERN PIECES WILL BE IDENTIFIED BY NUMBERS THE FIRST TIME THEY ARE USED.

SEAM ALLOWANCES:

- > Use 5/8" (1.5 cm) seam allowances unless otherwise indicated.
- > Pin or baste seams, right side together, matching notches. Fit garment before stitching major seams.
- > Press seam allowances flat; then open unless otherwise stated. Clip where necessary so they lie flat.



The following terms appear in **BOLD TYPE** throughout your sewing instructions!

> EASESTITCH

Stitch along seamline, using long machine stitches. Pull thread ends when adjusting to fit.

NOTE: For sleeve caps, make a second row of long machine stitches 1/4" (6mm) away in seam allowance, for more control.

> EDGESTITCH

Stitch close to finished edge or seam.

> FINISH

Stitch 1/4" (6mm) from raw edge and finish with one of the following: (1) Pink OR (2) Overcast OR (3) Turn in along stitching and stitch close to fold OR (4) Overlock.

OPTIONAL FOR HEMS: Apply Seam Binding.

> STAYSTITCH

Stitch 1/8" (3mm) from seamline in seam allowance (usually 1/2" (13mm) from raw edge).

> TOPSTITCH

On outside, stitch 1/4" (6mm) from edge, seam or previous stitching, using presser foot as guide, or stitch where indicated in instructions.

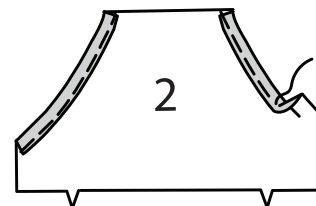
TOP A, B

NOTE: Under each sub-heading, the first View mentioned will be illustrated, unless otherwise indicated.

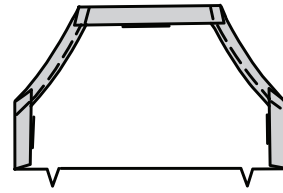
NOTE: Stretch fabric slightly in front and back of needle while stitching.

FRONT AND BACK**View B:**

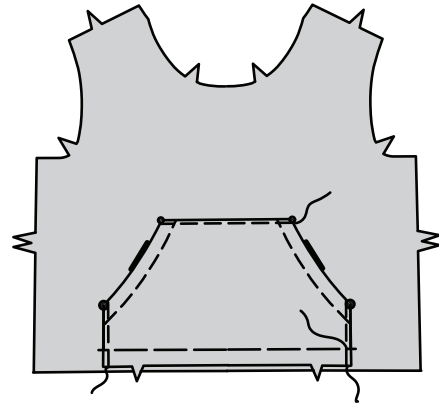
- 1** Turn in hem on upper side edges of POCKET (2); press. **TOPSTITCH** upper side edges.



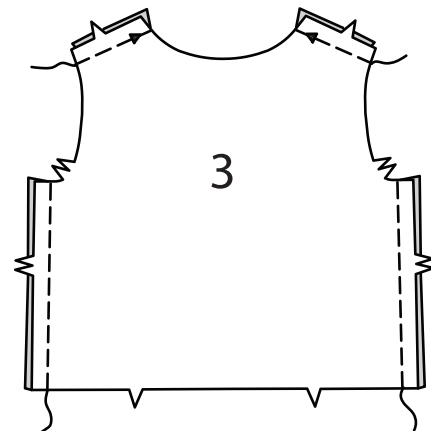
- 2** Turn in seam allowance on upper and side edges; press.



- 3** With right sides up, pin pocket to FRONT (1), having pressed edges along placement lines. **EDGESTITCH** upper and side edges. Baste lower edge.

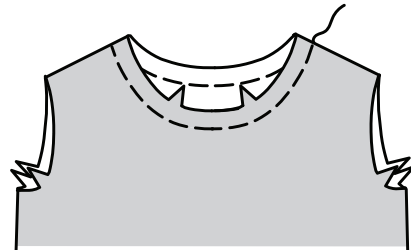


- 4** **Views A,B:** Stitch BACK (3) to front at shoulders and sides.



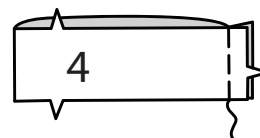
NECK BAND AND HOOD

- 5** **STAYSTITCH** neck edge of top.

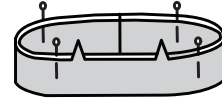


View A:

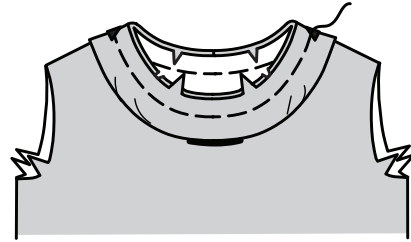
- 6** Stitch ends of NECK BAND (4) together.



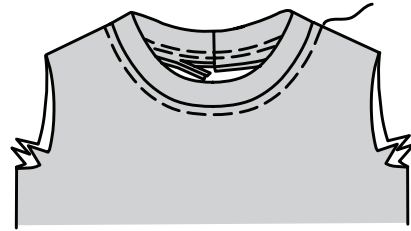
- 7** With wrong sides together, fold neck band along foldline. Pin raw edges together.



- 8** Pin neck band to neck edge, matching centers, clipping top neck edge as necessary. Stitch, stretching neck band to fit. Press seam down.

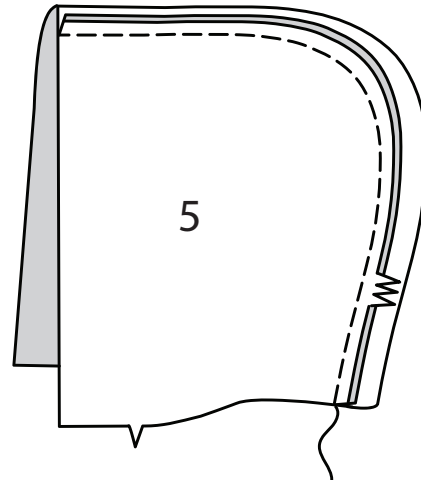


- 9** **TOPSTITCH** neck edge of top. If desired, trim seam close to topstitching.

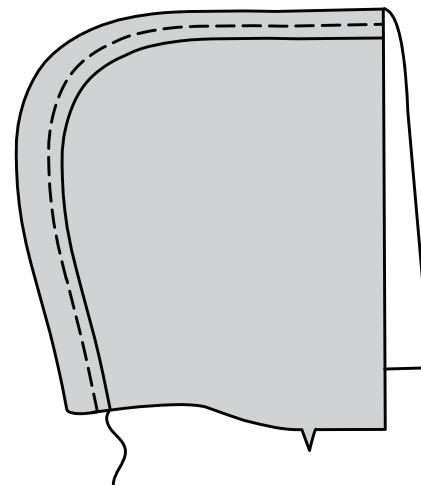


View B:

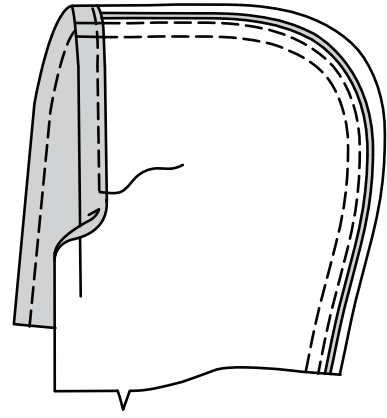
- 10** Pin HOOD (5) sections together. Stitch center back edge. Press seam to left side.



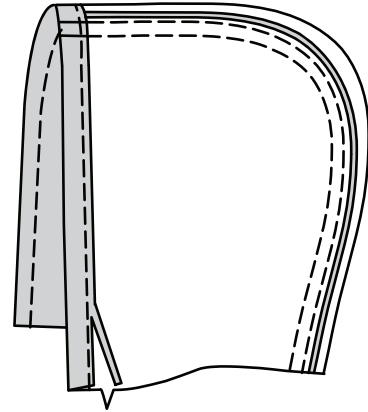
- 11** **TOPSTITCH** left side hood, as shown.



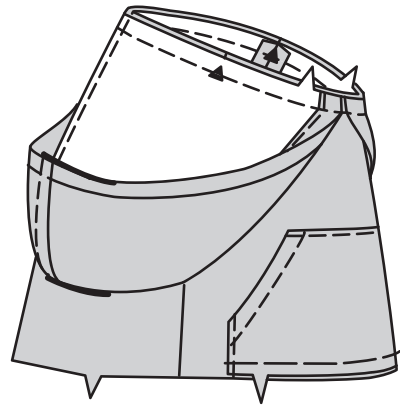
- 12** Turn in front edge of hood along foldline; press. **TOPSTITCH** $\frac{3}{4}$ "(2cm) from fold.



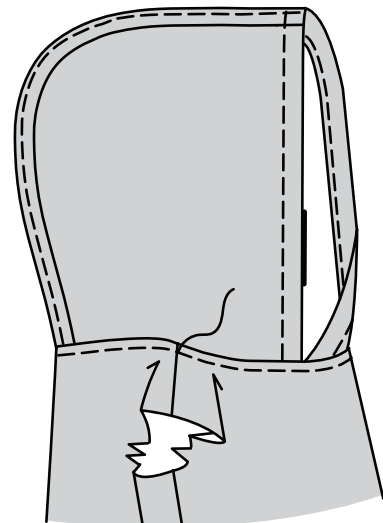
- 13** If desired, trim close to topstitching.



- 14** Pin hood to neck edge, matching center front, clipping top neck edge as necessary. Stitch. Press seam down.

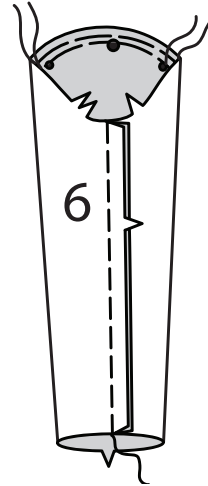


- 15** **TOPSTITCH** neck edge of top. If desired, trim seam close to topstitching.



SLEEVE AND BANDS

- 16** EASESTITCH upper edge of SLEEVE (6) between small circles. Stitch sleeve seam.



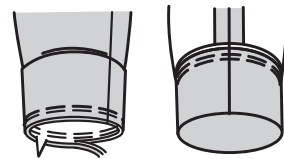
- 17** Stitch ends of SLEEVE BAND (7) together.



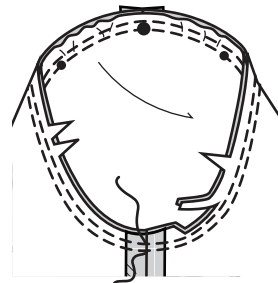
- 18** With wrong sides together, fold sleeve band along foldline. Pin raw edges together.



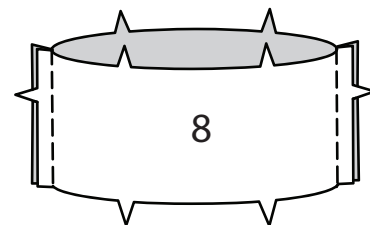
- 19** Pin sleeve band to sleeve, matching seams. Stitch, stretching band to fit. Stitch again $\frac{1}{4}$ " (6mm) away in seam allowance. Trim close to stitching. Press seam up.



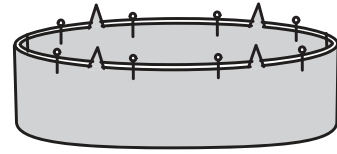
- 20** With right sides together, pin sleeve into armhole, placing large circle at shoulder seam. Adjust ease. Baste. Stitch. Stitch again $\frac{1}{4}$ " (6mm) away in seam allowance. Trim close to stitching. Press seam allowances flat. Turn seam toward sleeve.



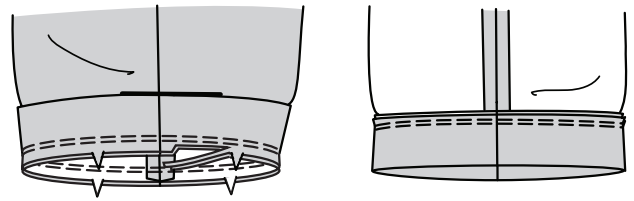
- 21** Stitch LOWER BAND (8) sections together at sides.



- 22** With wrong sides together, fold lower band along foldline. Pin raw edges together.



- 23** Pin band to lower edge of top, matching seams. Stitch, stretching band to fit. Stitch again $\frac{1}{4}$ " (6mm) away in seam allowance. Trim close to stitching. Press seam up.

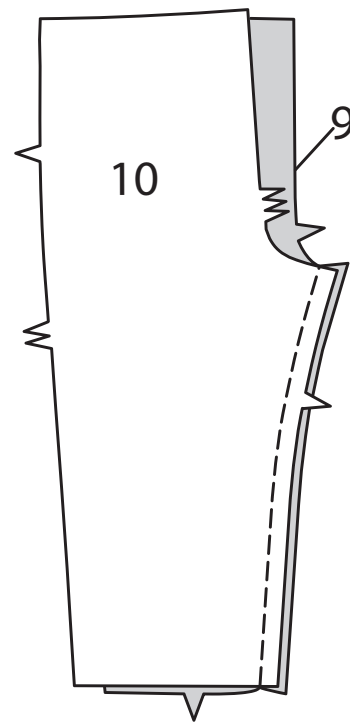


PANTS C

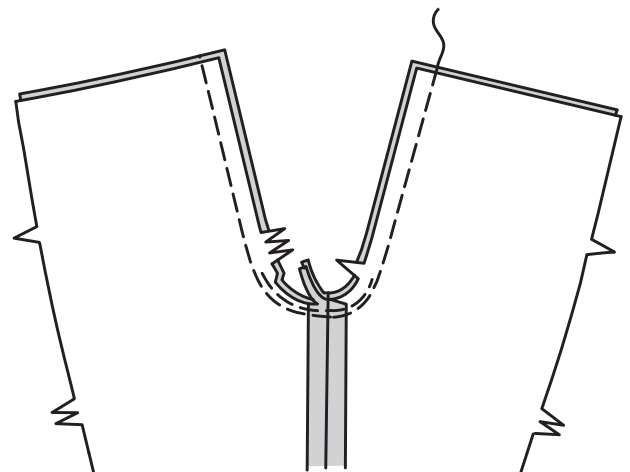
NOTE: *Stretch fabric slightly in front and back of needle while stitching.*

FRONT AND BACK

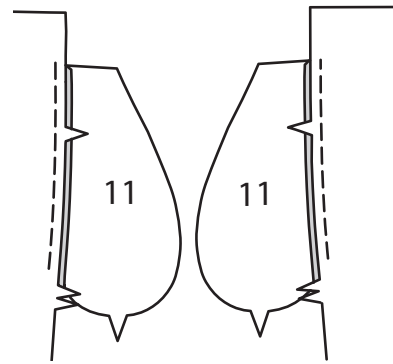
- 1** Stitch FRONT (9) to BACK (10) at inner leg edge.



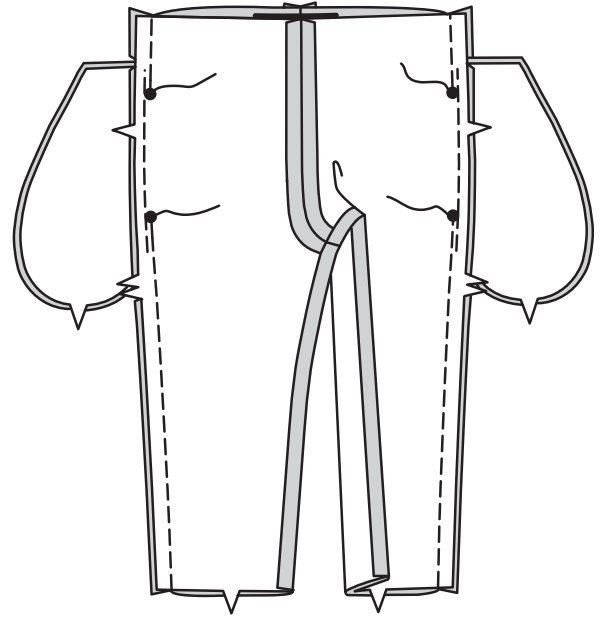
- 2** Stitch crotch seam. Stitch again $\frac{1}{4}$ " (6mm) away in seam allowance along curve, as shown. Trim close to second stitching.



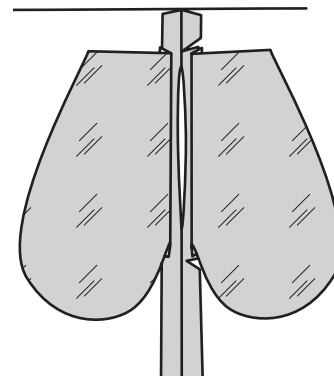
- 3** Stitch one POCKET (11) section to front and back at each side in $\frac{1}{4}$ " (6mm) seam. Press seams toward pockets.



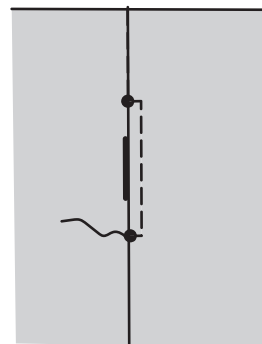
- 4** Stitch front and back together at sides, leaving open between large circles.



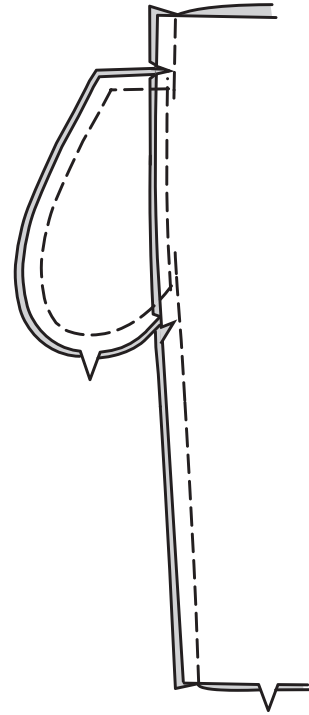
- 5** Clip back seam allowances above and below pockets. Turn front pocket toward front along seamlines; press.



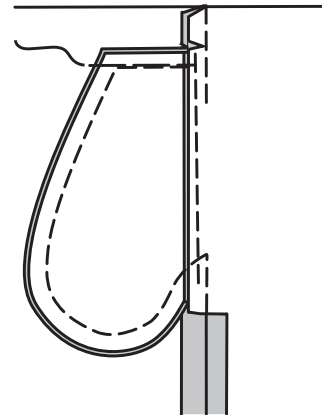
- 6** **TOPSTITCH** front pocket opening edge, pivoting to large circles, keeping back pocket free.



- 7** Stitch pocket edges together to side seams.

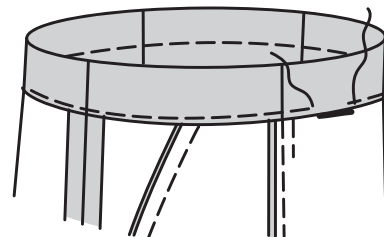


- 8** Turn pockets toward front along seamlines; press. Baste upper edge in place.

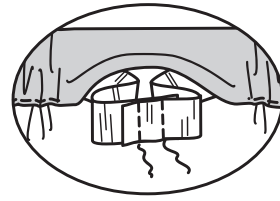


FINISHING

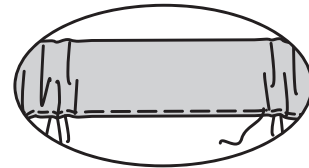
- 9** To form casing for elastic, turn upper edge of pants to inside along foldline; press. Stitch $\frac{1}{4}$ " (6mm) from raw edge, leaving an opening, as shown.



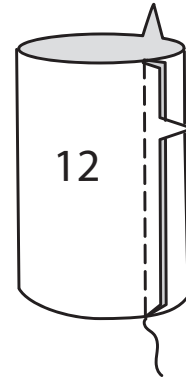
- 10** Cut elastic the measurement of waist, plus 1" (2.5cm). Insert elastic through opening. Lap ends; hold with safety pins. Try on; adjust if necessary. Stitch ends of elastic securely.



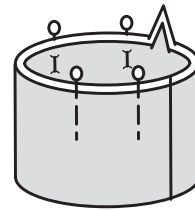
- 11** Stitch opening in casing, stretching elastic while stitching.



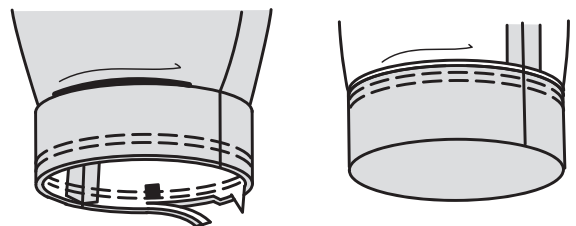
- 12** Stitch ends of LEG BAND (12) together.



- 13** With wrong sides together, fold leg band along foldline. Pin raw edges together.



- 14** Pin band to lower edge of pants, matching seams at inner leg and square to side. Stitch, stretching band to fit. Stitch again 1/4" (6mm) away in seam allowance. Trim close to stitching. Press seam up.





Congrats!

You've completed your sewing adventure!

SHARE
YOUR look!



Post your pattern and tag us at
@McCALLPATTERNCOMPANY and use #MCCALLSPATTERNS
for a chance to be featured on our social media!

Look for more McCall's PDF patterns at **McCALLPATTERN.COM**

 1-800-255-2762

© 2021 IG Design Group Americas, Inc. | All Rights Reserved
Sold for individual home use only and not for commercial or manufacturing purposes.