



PDF PATTERNS

# M8245

>> MISSES'  
ROMPER,  
JUMPSUIT,  
ROBE AND  
SASH

02

PIECES AND  
NOTIONS

03

CHARTS

05

CUTTING  
LAYOUTS

08

PATTERN  
MARKINGS

09

SEWING  
INSTRUCTIONS



# McCall's®

SKILL LEVEL: EASY

## Find the Perfect Fit!

**THINGS YOU NEED:**

> A,B: 1 $\frac{3}{8}$  yds. (1.3m) of  $\frac{1}{4}$ " (6mm) Elastic.

**SUGGESTED FABRICS:**

> 35% Moderate Stretch Knits: Rib Knit, Cotton Knit, French Terry, Lightweight Sweater Knits.

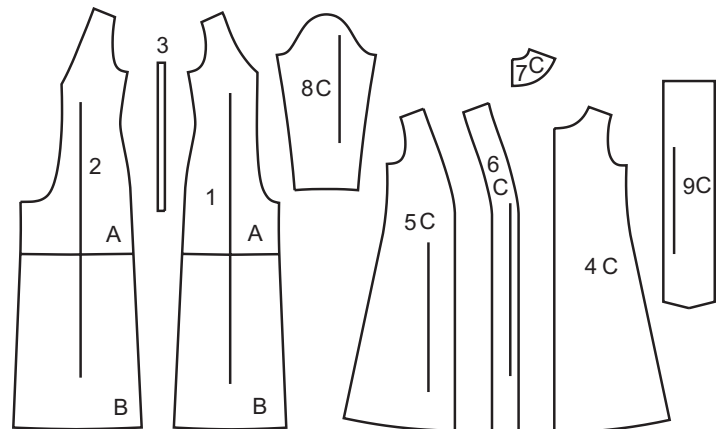
Your printed tile pieces should be assembled before you move on to this step!

**PIECES (9)****ROMPER A, JUMPSUIT B**

- 1 FRONT
- 2 BACK
- 3 GUIDE FOR ELASTIC

**ROBE AND SASH C**

- 4 BACK
- 5 FRONT
- 6 FRONT BAND
- 7 BACK NECK BAND
- 8 SLEEVE
- 9 SASH



## CHARTS

## YARDAGE CHARTS

SIZES	XS	S	M	L	XL	XXL	
	(4-6)	(8-10)	(12-14)	(16-18)	(20-22)	(24-26)	
<b>ROMPER A</b>							
60"*	1 $\frac{1}{8}$	1 $\frac{1}{4}$	1 $\frac{3}{8}$	1 $\frac{5}{8}$	2	2 $\frac{1}{4}$	yds.
150cm*	1.1	1.2	1.3	1.5	1.9	2.1	m
<b>JUMPSUIT B</b>							
60"*	2 $\frac{5}{8}$	2 $\frac{3}{4}$	3 $\frac{1}{4}$	3 $\frac{3}{8}$	3 $\frac{1}{2}$	3 $\frac{5}{8}$	yds.
150cm*	2.4	2.6	3.0	3.1	3.2	3.2	m
<b>ROBE AND SASH C</b>							
60"*	2 $\frac{5}{8}$	2 $\frac{5}{8}$	2 $\frac{3}{4}$	2 $\frac{7}{8}$	3 $\frac{1}{2}$	3 $\frac{1}{2}$	yds.
150cm*	2.4	2.4	2.6	2.6	3.2	3.2	m
<b>FUSIBLE INTERFACING C</b>							
20"*	1 $\frac{3}{8}$	1 $\frac{1}{2}$	1 $\frac{1}{2}$	1 $\frac{1}{2}$	1 $\frac{1}{2}$	1 $\frac{1}{2}$	yds.
51cm*	1.3	1.3	1.4	1.4	1.4	1.4	m

## FINISHED GARMENT MEASUREMENTS

SIZES	XS	S	M	L	XL	XXL	
	(4-6)	(8-10)	(12-14)	(16-18)	(20-22)	(24-26)	
<b>MEASUREMENT AT BUSTLINE</b>							
<b>ROMPER A, JUMPSUIT B</b>	31 $\frac{1}{2}$	33 $\frac{1}{2}$	37	41	45	49	in.
	80	85	94	104	115	125	cm
<b>ROBE C</b>	36	38	41 $\frac{1}{2}$	45 $\frac{1}{2}$	49 $\frac{1}{2}$	53 $\frac{1}{2}$	in.
	92	97	105.5	116	126	136	cm
<b>MEASUREMENT AT HIPLINE</b>							
<b>ROMPER A, JUMPSUIT B</b>	35 $\frac{1}{2}$	37 $\frac{1}{2}$	41	45	49	53	in.
	90	95	104	115	125	135	cm
<b>ROBE C</b>	44	46	49 $\frac{1}{2}$	53 $\frac{1}{2}$	57 $\frac{1}{2}$	61 $\frac{1}{2}$	in.
	112	117	126	136	146	156	cm
<b>WIDTH, EACH LEG</b>							
<b>ROMPER A</b>	26	27	28	29	30	31	in.
	66	69	71	74	76	79	cm
<b>JUMPSUIT B</b>	30	31	32	33	34	35	in.
	76	79	82	84	87	89	cm

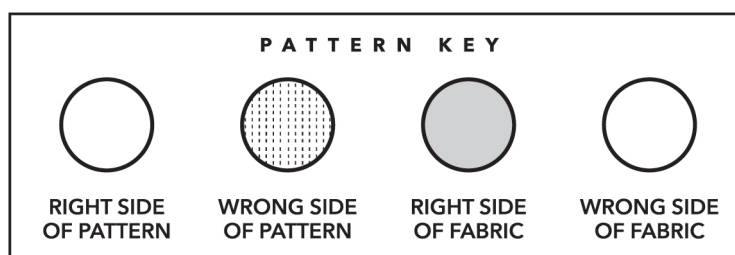
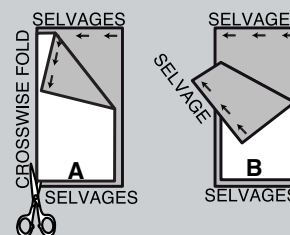
SIZES	XS	S	M	L	XL	XXL	
	(4-6)	(8-10)	(12-14)	(16-18)	(20-22)	(24-26)	
<b>BACK LENGTH FROM BASE OF NECK</b>							
<b>ROMPER A</b>	32½	33	33½	34	34½	35	in.
	83	84	85	86	88	89	cm
<b>JUMPSUIT B</b>	56½	57	57½	58	58½	59	in.
	144	145	146	147	149	150	cm
<b>ROBE C</b>	43½	44	44½	45	45½	46	in.
	110.5	112	113	115	116	117	cm

**BODY MEASUREMENTS**

SIZES	XS	S	M	L	XL	XXL	
	(4-6)	(8-10)	(12-14)	(16-18)	(20-22)	(24-26)	
<b>BUST</b>	29½-30½	31½-32½	34-36	38-40	42-44	46-48	in.
	75-77	80-83	87-92	97-102	107-112	117-122	cm
<b>WAIST</b>	22-23	24-25	26½-28	30-32	34-37	39-41½	in.
	56-58	61-64	67-71	76-81	87-94	99-105	cm
<b>HIP</b>	31½-32½	33½-34½	36-38	40-42	44-46	48-50	in.
	80-83	85-88	92-97	102-107	112-117	122-127	cm
<b>BACK WAIST LENGTH</b>	15¼-15½	15¾-16	16¼-16½	16¾-17	17¼-17½	17¾-18	in.
	39-39.5	40-40.5	41.5-42	42.5-43	44-44.5	45-45.5	cm

## CUTTING AND MARKING

- > **SHRINK FABRIC** if not labeled pre-shrunk. Press.
- > **CIRCLE LAYOUT** for View, Size, Fabric Width.
- > Use **WITH NAP** layout for fabrics with one-way designs, nap, pile or surface shading. Because most knits have surface shading, a with nap layout is used.
- > For **DOUBLE THICKNESS (WITH FOLD)**, fold fabric with right sides together.
- > **\*DOUBLE THICKNESS (WITHOUT FOLD)**, for fabrics with nap, fold fabric crosswise, right sides together. Mark as shown. Cut along crosswise fold of fabric (A). Turn upper layer 180° so arrows go in same direction and place over lower layer, right sides together (B).
- > For **SINGLE THICKNESS**, place fabric right side up. (For Fur Pile fabrics, place pile side down.)



- > Before **CUTTING**, place all pieces on fabric according to layout. Pin.  
(Layouts show approximate position of pattern pieces; position may vary according to your pattern size.)
- > ★ Cut other pieces first, allowing enough fabric to cut this piece. Open fabric. Cut piece on single layer of fabric with piece face up on right side of fabric.
- > Cut accurately, cutting notches outward.
- > Before removing pattern, **TRANSFER MARKINGS** and lines of construction to **WRONG SIDE** of fabric, using Pin and Chalk Pencil method or Tracing Paper and Dressmaker Wheel. Markings needed on right side of fabric should be thread traced.

**NOTE:** Broken-line boxes (a! b! c!) in layouts represent pieces cut by measurements provided.

- > Prewash your fabric using a method that's suitable for the fabric type.
- > Fold fabric with right sides together, matching **SELVAGES**.
- > Pin your pattern pieces to the fabric as shown below and cut them out using a sharp pair of dressmaker's shears.

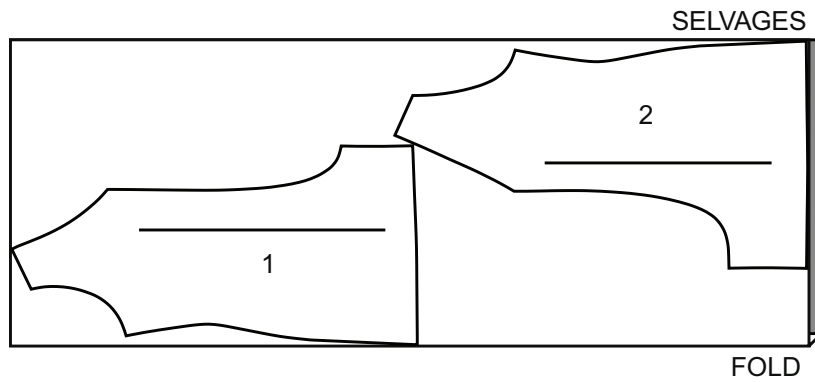
**1****ROMPER A**

USE PIECES: 1,2

60" (150 CM)

WITH NAP

ALL SIZES

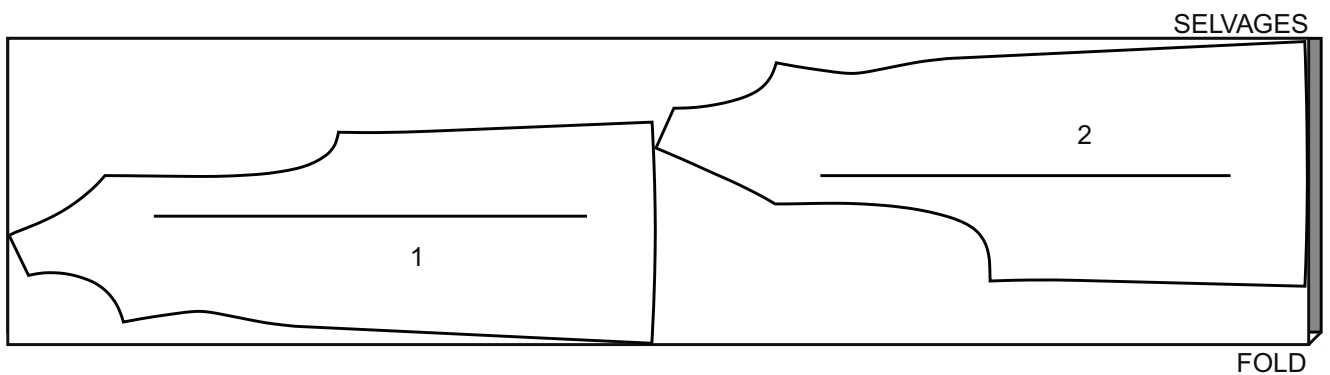
**2****JUMPSUIT B**

USE PIECES: 1,2

60" (150 CM)

WITH NAP

ALL SIZES



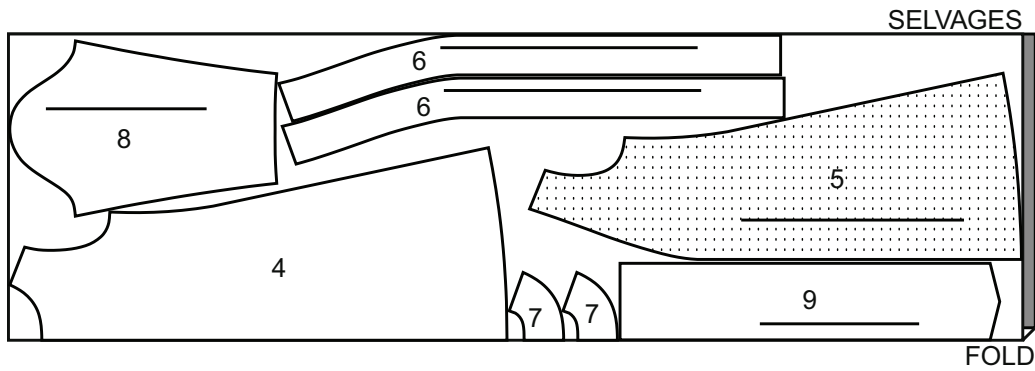
### 3 ROBE AND SASH C

USE PIECES: 4,5,6,7,8,9

60" (150 CM)

WITH NAP

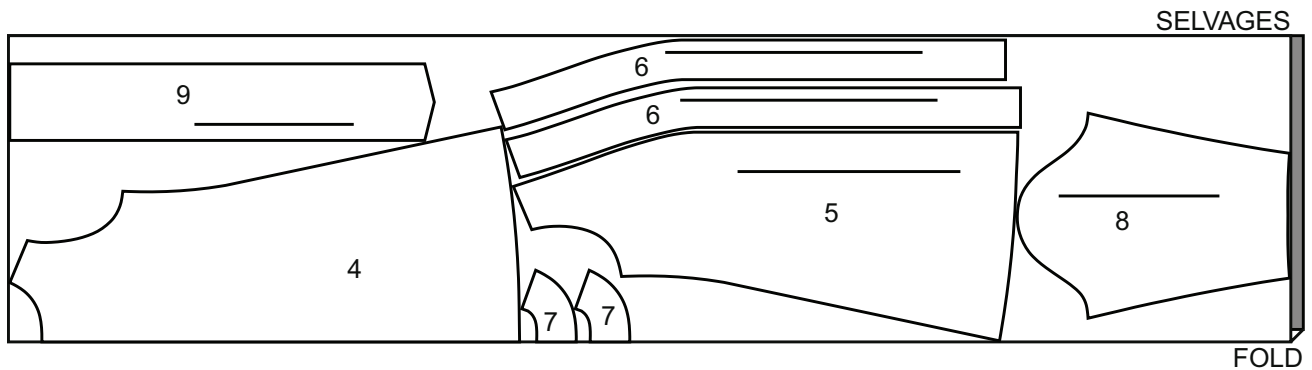
SIZES XS-S-M-L



60" (150 CM)

WITH NAP

SIZES XL-XXL



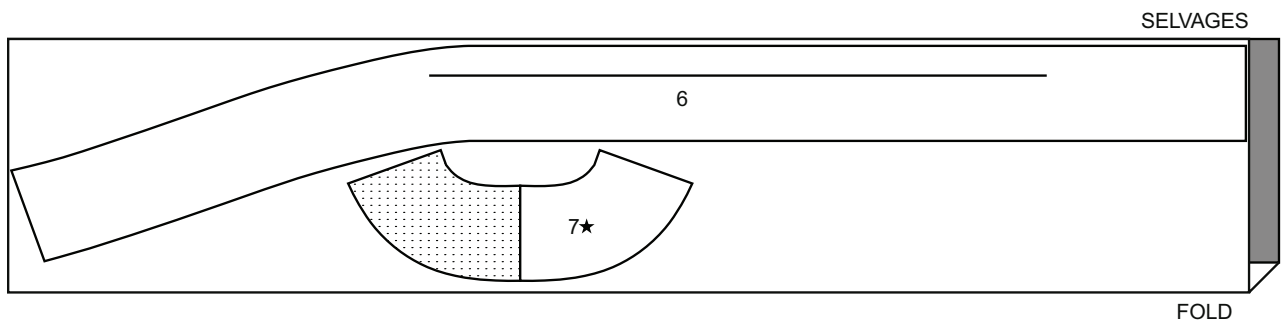
### 4 FUSIBLE INTERFACING C

USE PIECES: 6,7

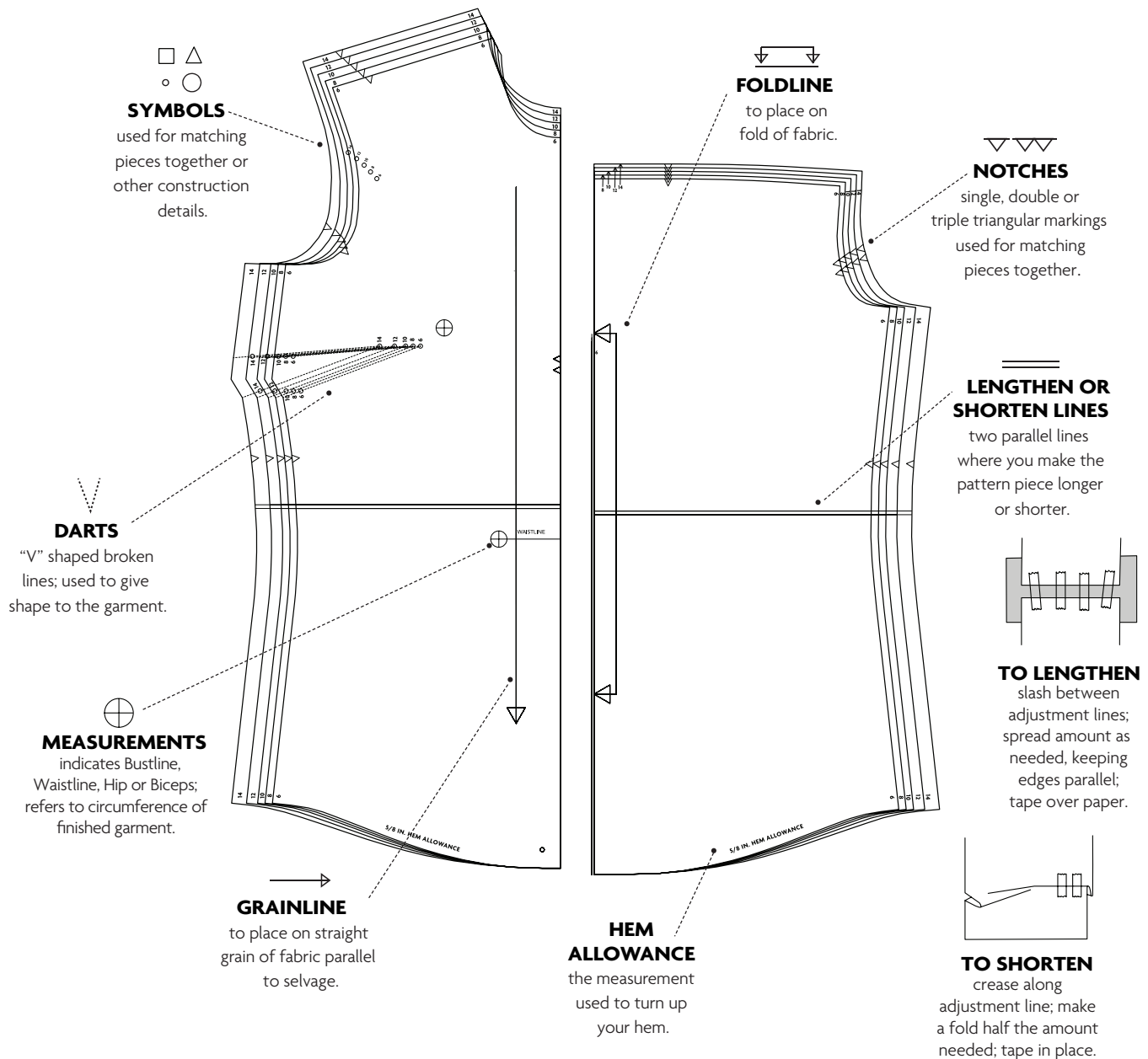
20" (51 CM)

WITH NAP

ALL SIZES







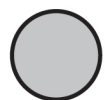
## STRETCH GAUGE - MEASURING FABRIC STRETCH

Whenever you see a minimum stretch requirement on one of the sewing patterns, it is important that you measure the fabric stretch in both length and width!

4" of crosswise folded knit must <b>STRETCH</b> from here 10 cm de tricot plié sur le travers doivent s'étirer d'ici 10 cm de tejido de punto doblado al través deben estirarse desde acá	→	To Here (35%) jusqu'ici (35%) hasta acá (35%)
---	---	---



## FABRIC KEY

RIGHT SIDE  
FABRICWRONG SIDE  
FABRIC

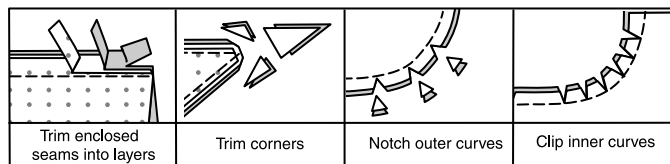
INTERFACING

RIGHT  
SIDE LININGWRONG  
SIDE LINING

PATTERN PIECES WILL BE IDENTIFIED BY NUMBERS THE FIRST TIME THEY ARE USED.

## SEAM ALLOWANCES:

- > Use 5/8" (1.5 cm) seam allowances unless otherwise indicated.
- > Pin or baste seams, right side together, matching notches. Fit garment before stitching major seams.
- > Press seam allowances flat; then open unless otherwise stated. Clip where necessary so they lie flat.



The following terms appear in **BOLD TYPE** throughout your sewing instructions!

> **EASESTITCH**

Stitch along seamline, using long machine stitches. Pull thread ends when adjusting to fit.

NOTE: For sleeve caps, make a second row of long machine stitches 1/4" (6mm) away in seam allowance, for more control.

> **NARROW HEM**

Turn in hem; press, easing in fullness if necessary. Open out hem. Turn in again so raw edge is along crease; press. Turn in along crease; stitch.

> **SLIPSTITCH**

Slide needle through a folded edge, then pick up a thread of underneath fabric.

> **STAYSTITCH**

Stitch 1/8" (3mm) from seamline in seam allowance (usually 1/2" (13mm) from raw edge).

> **TOPSTITCH**

On outside, stitch 1/4" (6mm) from edge, seam or previous stitching, using presser foot as guide, or stitch where indicated in instructions.

> **UNDERSTITCH**

Open out facing or underside of garment; stitch to seam allowance close to seam.

## ROMPER A, JUMPSUIT B

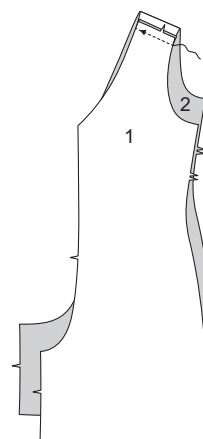
**NOTE:** For knits, stretch fabric evenly in front and back of needle while stitching.

**NOTE:** The first view mentioned will be illustrated unless otherwise indicated.

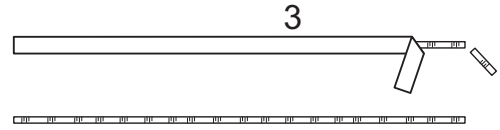
## FRONT AND BACK

1

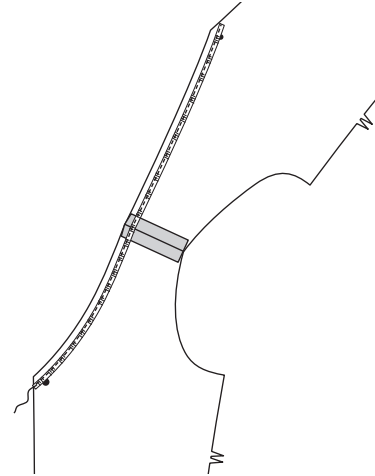
Stitch FRONT (1) to BACK (2) at shoulders.



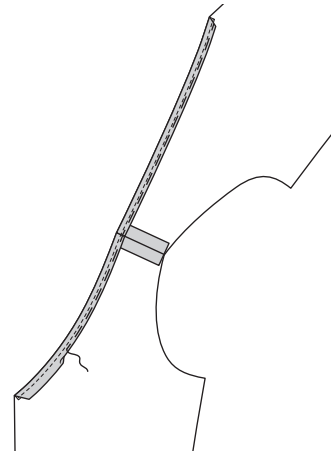
- 2** Cut two pieces of elastic the length of GUIDE FOR ELASTIC (3). Transfer markings.



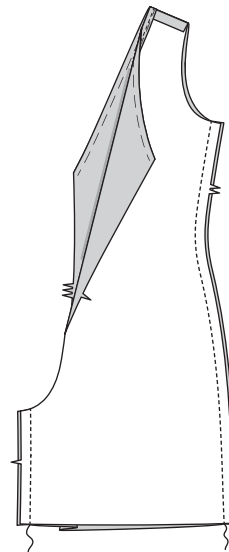
- 3** On inside, pin elastic to neck edge, having one long edge along seamline, as shown. Stitch close to remaining long edge between circles, stretching elastic to fit.



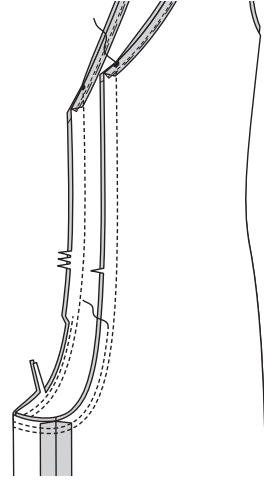
- 4** Turn up 5/8" (1.5cm) hem at neck edge of garment, turning in 1/4" (6mm) on raw edge, encasing elastic. Baste.



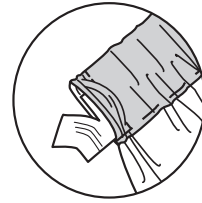
- 5** Stitch front and back at side and inner leg.



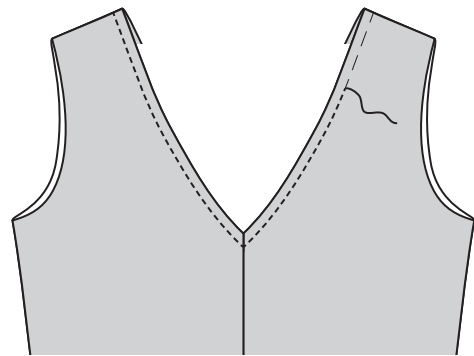
- 6** For crotch seam, turn one garment leg right side out; slip inside remaining garment leg. Stitch between circles. Stitch again  $\frac{1}{4}$ " (6mm) away in seam allowance along curve, as shown. Trim close to second stitching.



- 7** Trim elastic as close as possible to stitching, being careful not to cut garment.

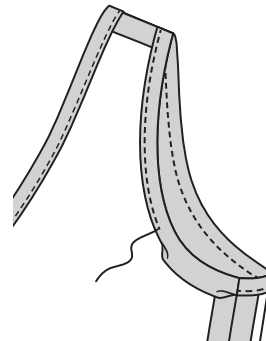


- 8** On outside, **TOPSTITCH** neck edge along basting, pivoting at centers as shown.

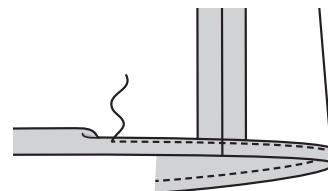


## FINISHING

- 9** Make  $5/8$ " (1.5cm) **NARROW HEM** at armhole edges.

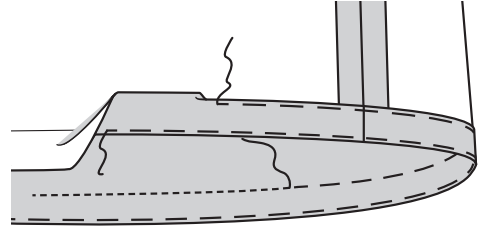


- 10** **View A:** Make  $5/8$ " (1.5cm) **NARROW HEM** at lower edge.



**View B:**

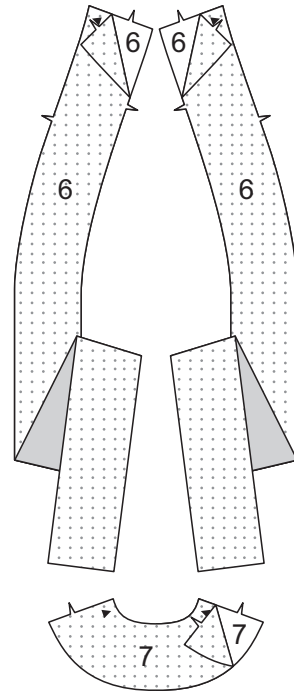
- 11** Turn up hem. Baste close to fold. Turn under  $\frac{1}{4}$ " (6mm) on raw edge; press. Baste close to upper pressed edge.
- TOPSTITCH** hem in place along upper basting, as shown.

**ROBE AND SASH C**

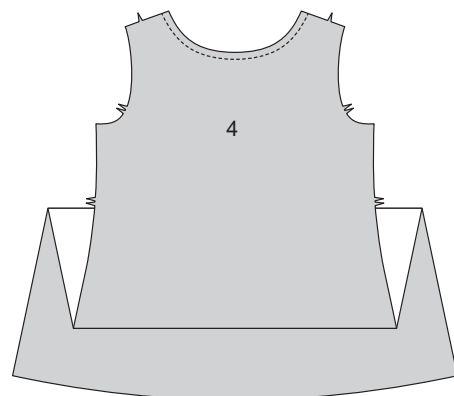
**NOTE:** For knits, stretch fabric evenly in front and back of needle while stitching.

**INTERFACING**

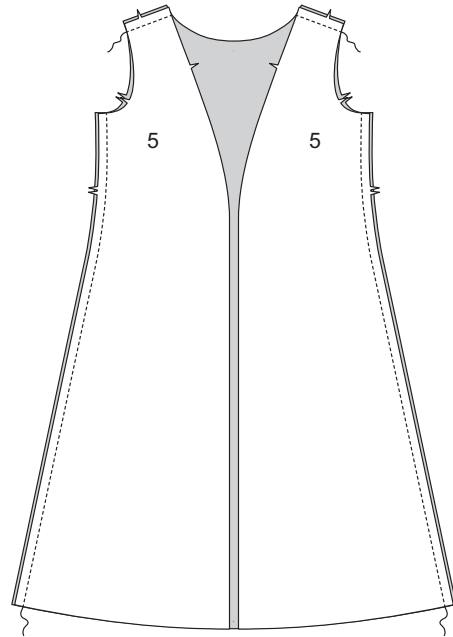
- 1** Fuse INTERFACING to wrong side of each matching FABRIC section, following manufacturer's instructions.

**FRONT AND BACK**

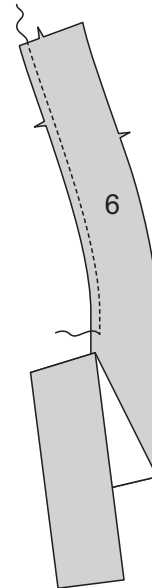
- 2** **STAYSTITCH** BACK (4) neck edge.



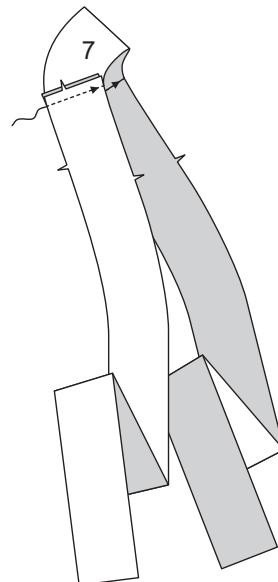
- 3** Stitch FRONT (5) sections to back at shoulders and sides.



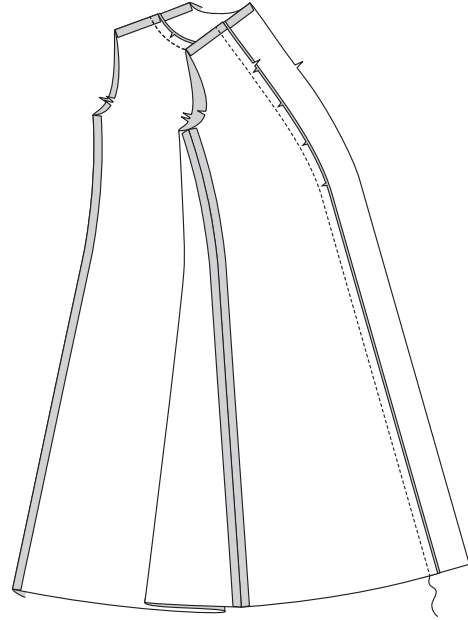
- 4** **STAYSTITCH** inner edge of uninterfaced FRONT BAND (6) sections above waistline, as shown.



- 5** Stitch uninterfaced BACK NECK BAND (7) section to uninterfaced front band sections at shoulders. **Note:** Interfaced band sections will be used as facing.

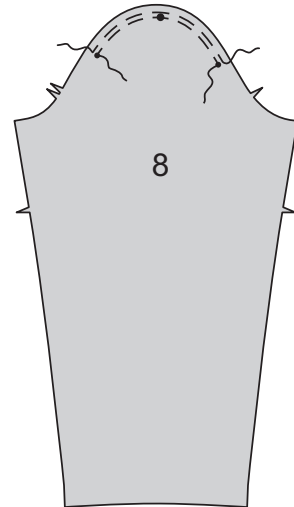


- 6** Pin band to front opening and neck edges, matching centers, clipping front band and back neck edge where necessary. Baste. Stitch.

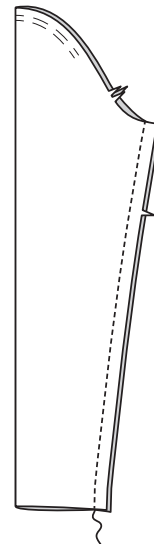


## SLEEVE

- 7** **EASESTITCH** upper edge of SLEEVE (8) between small circles.

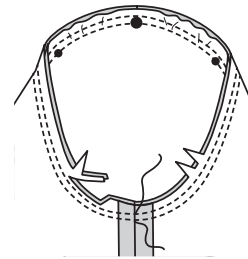
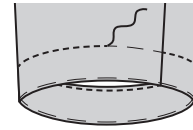
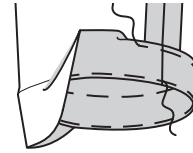


- 8** Stitch seam in sleeve.



- 9** Turn up sleeve hem. Baste close to fold. Turn under  $\frac{1}{4}$ " (6mm) on raw edge; press. Baste close to upper pressed edge.

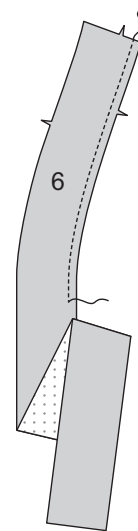
**TOPSTITCH** hem in place along upper basting, as shown.



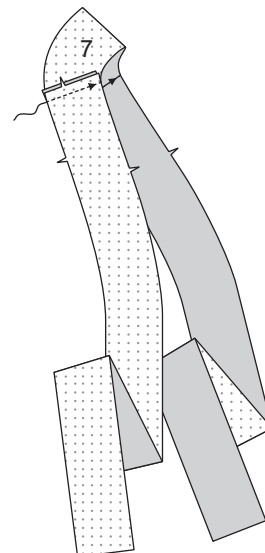
- 10** With right sides together, pin sleeve into armhole, placing large circle at shoulder seam. Adjust ease; baste. Stitch. Stitch again  $\frac{1}{4}$ " (6mm) away in seam allowance. Trim close to stitching. Press seam allowances flat. Turn seam toward sleeve.

## FINISHING

- 11** **STAYSTITCH** inner edge of front band **FACING** (6) above waistline, as shown.

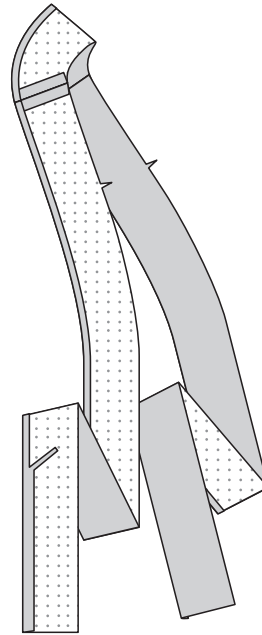


- 12** Stitch back neck band **FACING** (7) to front band facings at shoulders.

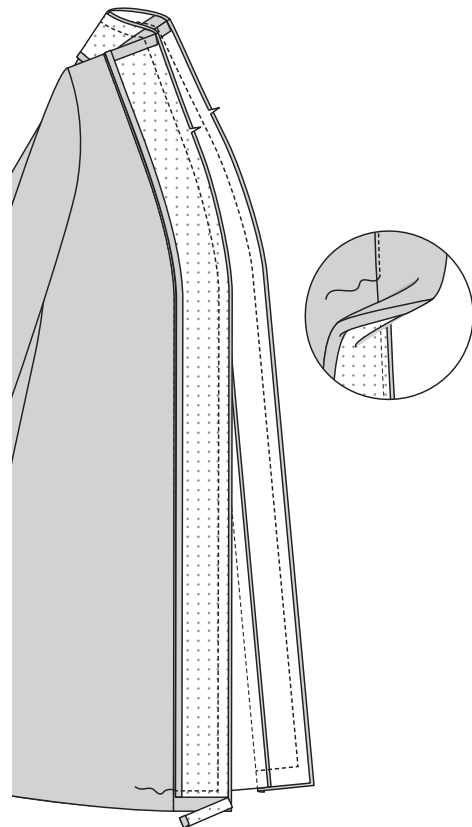




- 13** Turn in seam allowance on inner long edge of band facing. Press. Trim pressed seam allowance to  $\frac{3}{8}$ " (1 cm).

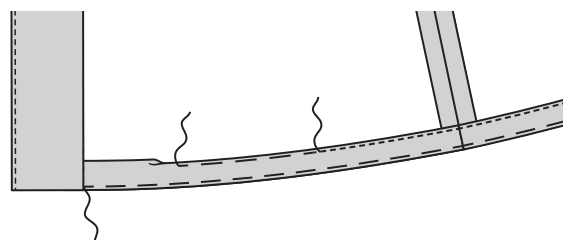


- 14** With right sides together, pin facing to band, matching centers. Stitch front opening and neck edges. Stitch across facing 1" (2.5 cm) above raw edge. Trim, as shown. **UNDERSTITCH** facing as far as possible.

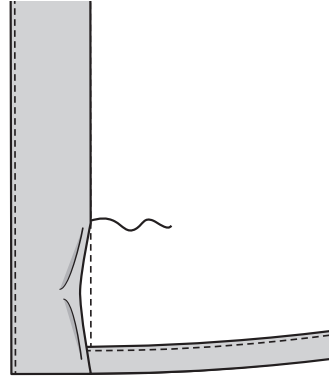


- 15** Turn facing to inside, turning up hem. Baste close to fold. Turn in  $\frac{1}{4}$ " (6 mm) on raw edge, easing in fullness if necessary. Baste hem in place close to upper edge, as shown. Press.

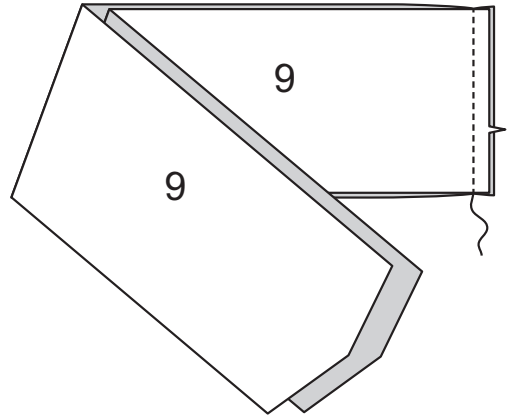
**TOPSTITCH** hem along upper basting.



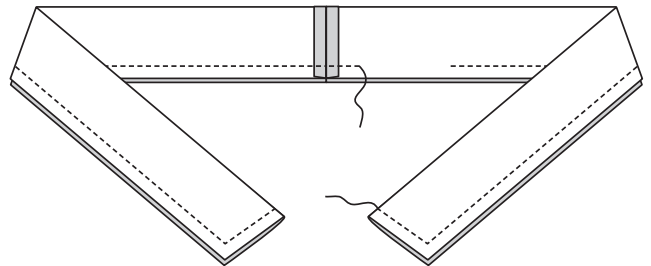
**16** **SLIPSTITCH** pressed edge over seam.



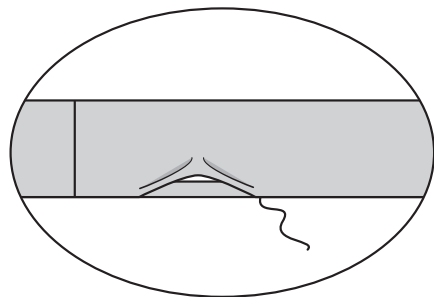
**17** Stitch SASH (9) sections together at notched end.

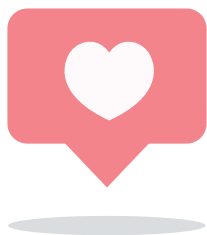


**18** With right sides together, fold sash along foldline. Stitch, leaving an opening. Trim.



**19** Turn. Press. **SLIPSTITCH** opening.





# Congrats!

You've completed your sewing adventure!


---

## SHARE YOUR look!



Post your pattern and tag us at  
@McCALLPATTERNCOMPANY and use #MCCALLSPATTERNS  
for a chance to be featured on our social media!

Look for more McCall's PDF patterns at **McCALLPATTERN.COM**

 1-800-255-2762

© 2021 IG Design Group Americas, Inc. | All Rights Reserved  
Sold for individual home use only and not for commercial or manufacturing purposes.