



PDF PATTERNS

M8132

>> MISSES'
DRESS,
JACKET,
PURSE AND
HAT TRIM

02

PIECES AND
NOTIONS

03

CHARTS

04

CUTTING
LAYOUTS

10

PATTERN
MARKINGS

11

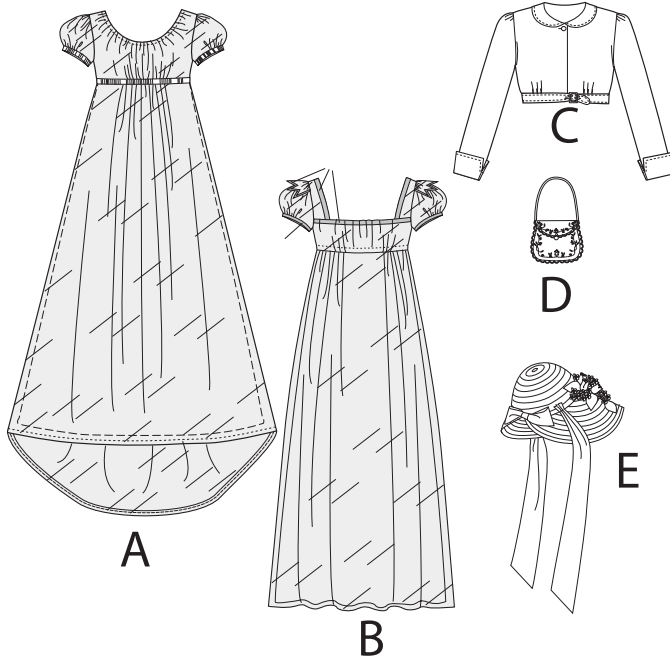
SEWING
INSTRUCTIONS



McCall's®

SKILL LEVEL: AVERAGE

Find the Perfect Fit!



THINGS YOU NEED:

- > A,B: 3 yds. of ¼" Ribbon, 1¾ yds. of 5/8" Grosgrain Ribbon and Hooks & Eyes.
- > A: 2¾ yds. of ½" Piping Cord and Shoe Lace: 43" for Sizes 6-8-10-12; 54" for Sizes 14-16-18-20-22. 3 yds. of 7/8" Decorative Ribbon.
- > C: One ½" Shank Button and 1" Buckle without Prong.
- > D: 1½ yds. of 3mm Pearls-On-A-String, ½ yd. of 1/8" Silk-Cord, 1/8 yd. of 1/6" Soutache Braid, One 3/8" Half Ball Button and Five Different Colors of Embroidery Floss and Embroidery Needle.
- > E: Purchased Hat and Silk Flowers, Purchased Gloves.

SUGGESTED FABRICS:

- > A: Novelty Mesh, Chiffon. B, Underlining/Lining
- > B: Cotton/Cotton Blends, Batiste, Lawn, Voile. C: Linen. Lining C: Cotton Blends, Lining Fabrics. Underlining/ Lining A, Contrast Binding B, Purse D, Trim E: China Silk, Satin.

Your printed tile pieces should be assembled before you move on to this step!

PIECES (32)

DRESS A,B

- 1 BODICE FRONT A
- 2 BODICE SIDE BACK A
- 3 BODICE BACK A
- 4 INSET A
- 5 BODICE FRONT B
- 6 FRONT OVERLAY B
- 7 BODICE SIDE BACK B
- 8 BODICE BACK B
- 9 BACK OVERLAY B
- 10 CONTINUOUS BIAS B
- 11 CASING B
- 12 YOKE FRONT B
- 13 YOKE BACK B
- 14 SLEEVE
- 15 SLEEVE FLOUNCE B
- 16 BINDING B
- 17 SLEEVE BAND A

18 SLEEVE BINDING B

- 19 SKIRT FRONT
- 20 SKIRT BACK

JACKET C

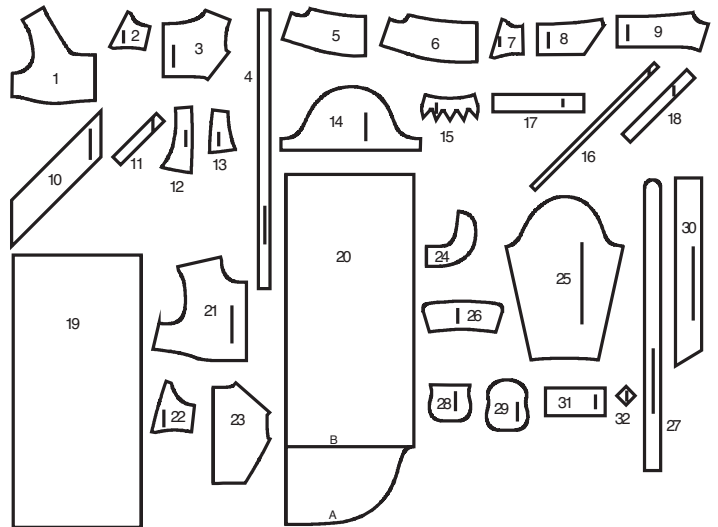
- 21 FRONT
- 22 SIDE BACK
- 23 BACK
- 24 COLLAR
- 25 SLEEVE
- 26 CUFF
- 27 BAND

PURSE D

- 28 FRONT
- 29 BACK

HAT TRIM E

- 30 TIE END
- 31 BOW
- 32 KNOT



CHARTS

YARDAGE CHARTS

SIZES	6	8	10	12	14	16	18	20	22	
VIEW A										
45**	3 ³ / ₄	3 ³ / ₄	3 ³ / ₄	3 ³ / ₄	3 ³ / ₄	3 ³ / ₄	4 ¹ / ₈	4 ¹ / ₈	4 ¹ / ₈	yds.
60**	3	3 ¹ / ₂	3 ¹ / ₂	3 ¹ / ₂	3 ¹ / ₂	3 ¹ / ₂	3 ¹ / ₂	3 ³ / ₄	3 ³ / ₄	yds.
UNDERLINING/LINING A										
45*	3 ⁷ / ₈	3 ⁷ / ₈	3 ⁷ / ₈	3 ⁷ / ₈	3 ⁷ / ₈	3 ⁷ / ₈	4 ³ / ₈	4 ³ / ₈	4 ³ / ₈	yds.
60*	3 ¹ / ₈	3 ¹ / ₈	3 ¹ / ₈	3 ³ / ₈	3 ³ / ₈	3 ³ / ₈	3 ³ / ₈	3 ³ / ₈	3 ³ / ₈	yds.
VIEW B										
45**	3 ¹ / ₂	3 ¹ / ₂	3 ¹ / ₂	3 ¹ / ₂	3 ¹ / ₂	3 ¹ / ₂	3 ¹ / ₂	3 ¹ / ₂	3 ¹ / ₂	yds.
60**	2 ⁷ / ₈	3 ¹ / ₈	3 ¹ / ₈	3 ¹ / ₈	3 ¹ / ₈	3 ¹ / ₈	3 ³ / ₈	3 ³ / ₈	3 ³ / ₈	yds.
UNDERLINING/LINING B										
45**	3 ¹ / ₂	3 ¹ / ₂	3 ¹ / ₂	3 ¹ / ₂	3 ¹ / ₂	3 ¹ / ₂	4 ¹ / ₈	4 ¹ / ₈	4 ¹ / ₈	yds.
60**	2 ⁷ / ₈	2 ⁷ / ₈	2 ⁷ / ₈	3 ¹ / ₄	3 ¹ / ₄	3 ¹ / ₄	3 ¹ / ₄	3 ¹ / ₄	3 ¹ / ₄	yds.
CONTRAST B (CONTINUOUS BIAS, SLEEVE BINDING, BINDING) - 45,60** - 3/4 yd.										
VIEW C										
45**	1 ⁷ / ₈	1 ⁷ / ₈	1 ⁷ / ₈	1 ⁷ / ₈	1 ⁷ / ₈	1 ⁷ / ₈	2 ¹ / ₄	2 ¹ / ₄	2 ¹ / ₄	yds.
60**	1 ³ / ₈	1 ³ / ₈	1 ³ / ₈	1 ³ / ₈	1 ³ / ₈	1 ³ / ₈	1 ¹ / ₂	1 ¹ / ₂	1 ⁵ / ₈	yds.
SEW-IN INTERFACING C (LT.WT.)										
18,20	1	1 ¹ / ₈	1 ¹ / ₈	1 ¹ / ₈	1 ¹ / ₄	1 ¹ / ₄	1 ³ / ₈	1 ³ / ₈	1 ¹ / ₂	yds.
LINING C										
45**	1 ¹ / ₄	1 ¹ / ₄	1 ¹ / ₄	1 ³ / ₈	1 ³ / ₈	1 ³ / ₈	1 ¹ / ₂	1 ¹ / ₂	1 ¹ / ₂	yds.
D - 45,60** - 1/4 yd.										
SEW-IN INTERFACING D (LT.WT.) - 18,20 - 1/4 yd.										
LINING D - 45** - 1/4 yd.										
VIEW E										
45,60**	7/8	7/8	7/8	7/8	7/8	7/8	7/8	1	1	yds.

FINISHED GARMENT MEASUREMENTS

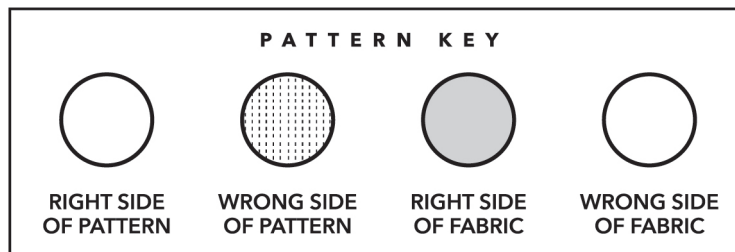
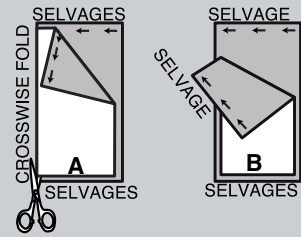
SIZES	6	8	10	12	14	16	18	20	22	
WIDTH, LOWER EDGE										
VIEW B	68	69	70	71½	73½	75½	77½	79½	81½	in.
VIEW C	33	34	35	36½	38½	40½	42½	44½	46½	in.
BACK LENGTH FROM BASE OF NECK										
VIEW A	50	50¼	50½	50¾	51	51¼	51½	51¾	52	in.
VIEW B	40	40¼	40½	40¾	41	41¼	41½	41¾	42	in.
SIDE LENGTH FROM WAIST										
VIEW *	-0	-0		0	0	0	0	0	0	in.
VIEW *	-0	-0		0	0	0	0	0	0	in.
VIEW *	-0	-0		0	0	0	0	0	0	in.

BODY MEASUREMENTS

SIZES	6	8	10	12	14	16	18	20	22	
BUST	30½	31½	32½	34	36	38	40	42	44	in.
WAIST	23	24	25	26½	28	30	32	34	37	in.
HIP	32½	33½	34½	36	38	40	42	44	46	in.
BACK WAIST LENGTH	15½	15¾	16	16¼	16½	16¾	17	17¼	17½	in.

CUTTING AND MARKING

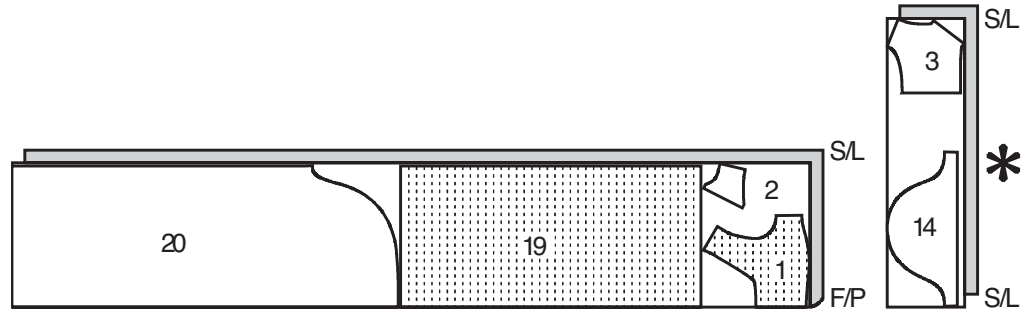
- > **SHRINK FABRIC** if not labeled pre-shrunk. Press.
- > **CIRCLE LAYOUT** for View, Size, Fabric Width.
- > Use **WITH NAP** layout for fabrics with one-way designs, nap, pile or surface shading. Because most knits have surface shading, a with nap layout is used.
- > For **DOUBLE THICKNESS (WITH FOLD)**, fold fabric with right sides together.
- > ***DOUBLE THICKNESS (WITHOUT FOLD)**, for fabrics with nap, fold fabric crosswise, right sides together. Mark as shown. Cut along crosswise fold of fabric (A). Turn upper layer 180° so arrows go in same direction and place over lower layer, right sides together (B).
- > For **SINGLE THICKNESS**, place fabric right side up. (For Fur Pile fabrics, place pile side down.)



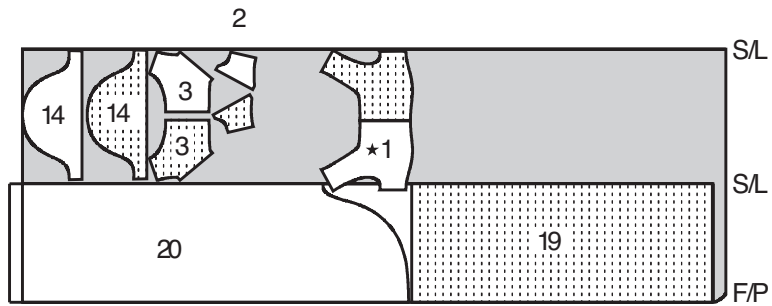
- > Before **CUTTING**, place all pieces on fabric according to layout. Pin.
(Layouts show approximate position of pattern pieces; position may vary according to your pattern size.)
 - > ★ Cut other pieces first, allowing enough fabric to cut this piece. Open fabric. Cut piece on single layer of fabric with piece face up on right side of fabric.
 - > Cut accurately, cutting notches outward.
 - > Before removing pattern, **TRANSFER MARKINGS** and lines of construction to **WRONG SIDE** of fabric, using Pin and Chalk Pencil method or Tracing Paper and Dressmaker Wheel. Markings needed on right side of fabric should be thread traced.
- NOTE:** Broken-line boxes (a! b! c!) in layouts represent pieces cut by measurements provided.
- > Prewash your fabric using a method that's suitable for the fabric type.
 - > Fold fabric with right sides together, matching **SELVAGES**.
 - > Pin your pattern pieces to the fabric as shown below and cut them out using a sharp pair of dressmaker's shears.

1 DRESS A

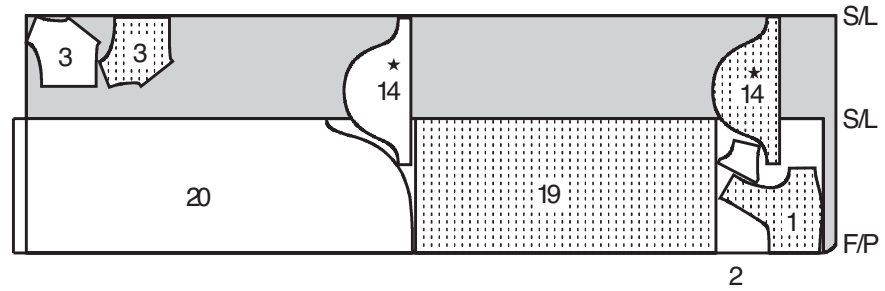
PIECES: 1,2,3,14,19 & 20
 45" (115 CM)
 SIZES: 6-8-10-12-14-16



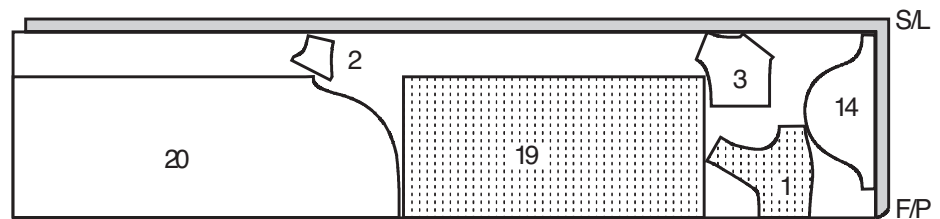
45" (115 CM)
 SIZES: 18-20-22



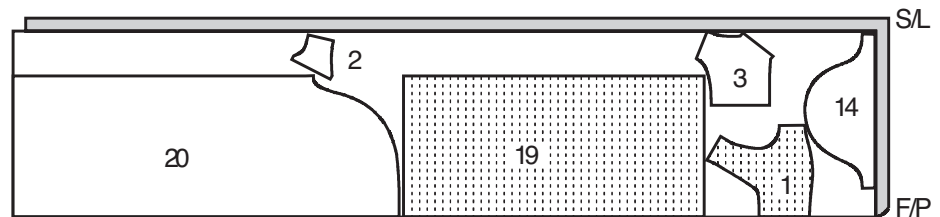
60" (150 CM)
 SIZES: 6



60" (150 CM)
 SIZES: 8-10-12-14-16-18



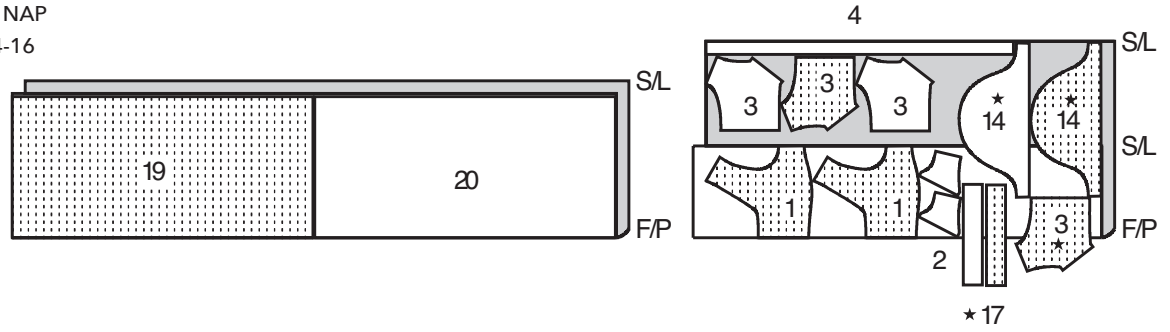
60" (150 CM)
 SIZES: 20-22



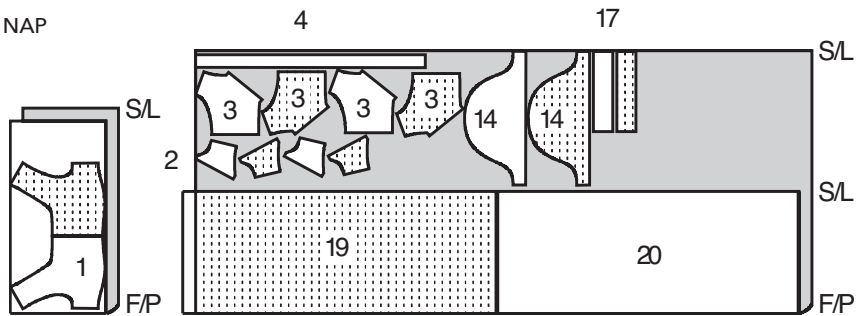
2

UNDERLINING

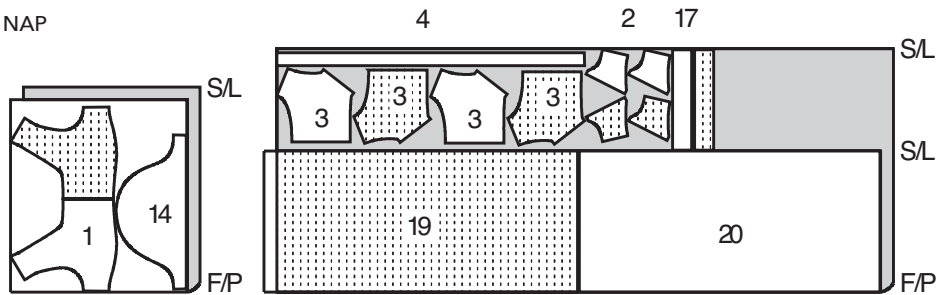
PIECES: 1,2,3,4,14,17,19 & 20
 45" (115 CM) WITH NAP
 SIZES: 6-8-10-12-14-16



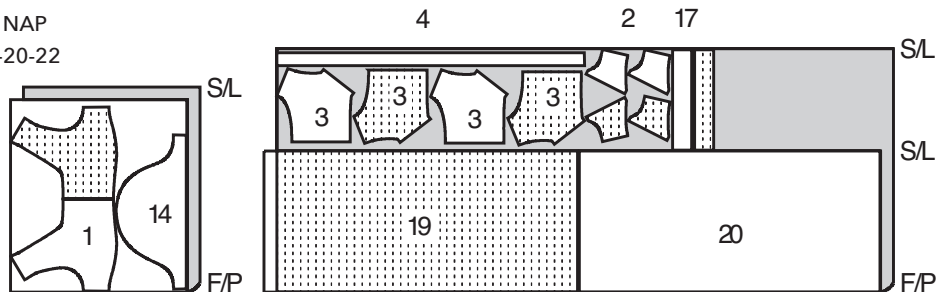
45" (115 CM) WITH NAP
 SIZES: 18-20-22



60" (150 CM) WITH NAP
 SIZES: 6-8-10



60" (150 CM) WITH NAP
 SIZES: 12-14-16-18-20-22



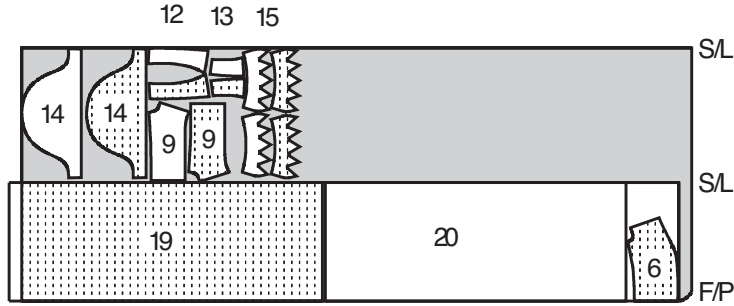
3

DRESS B

PIECES: 6,9,12,13,14,15,19 & 20

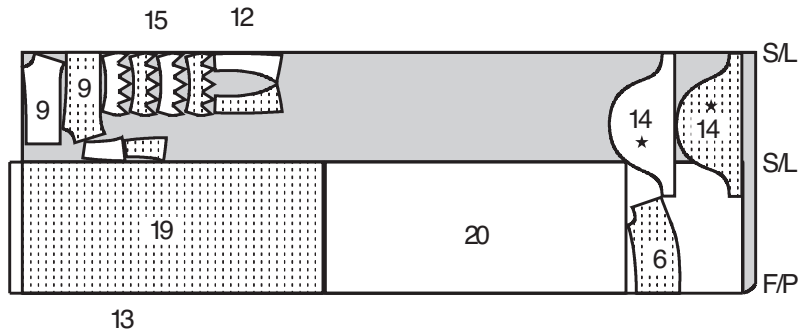
45" (115 CM)

ALL SIZES



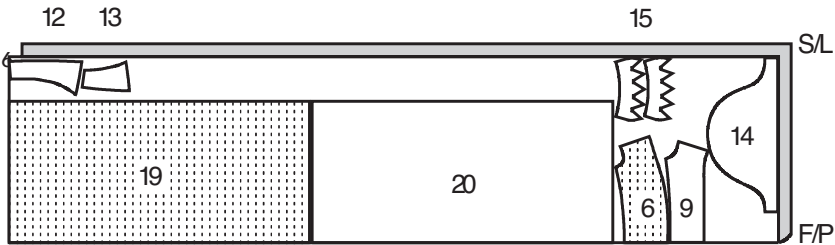
60" (150 CM)

SIZES: 6



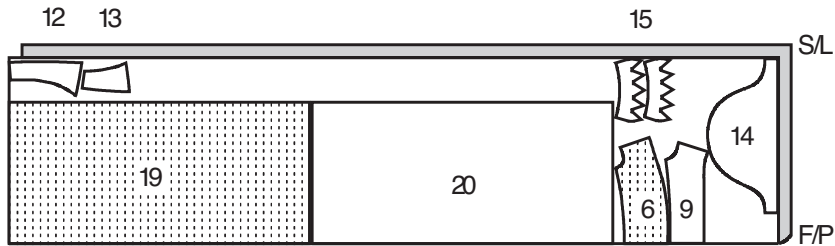
60" (150 CM)

SIZES: 8-10-12-14-16



60" (150 CM)

SIZES: 18-20-22



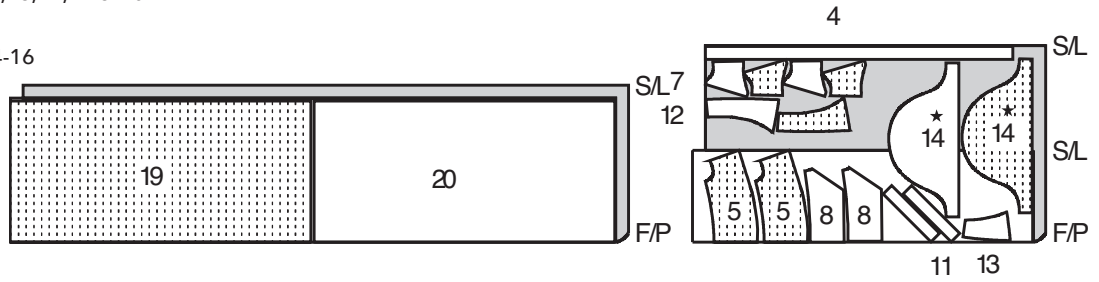
4

UNDERLINING

PIECES: 5,7,8,11,12,13,14,19 & 20

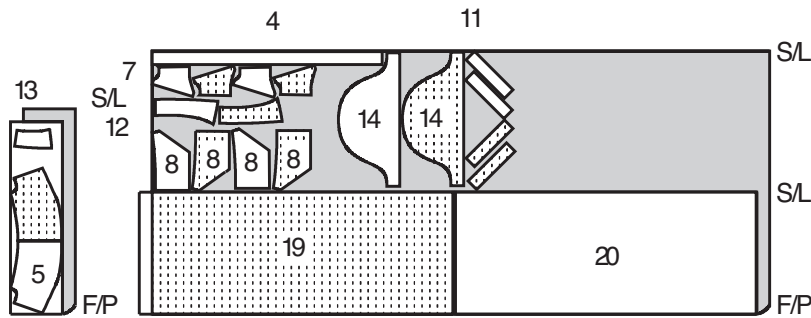
45" (115 CM)

SIZES: 6-8-10-12-14-16



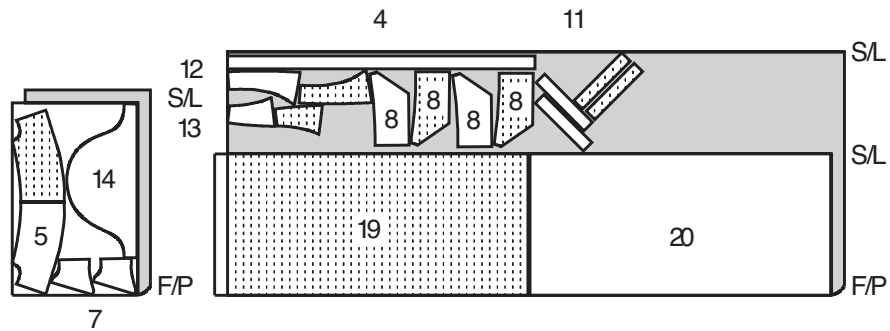
45" (115 CM)

SIZES: 18-20-22



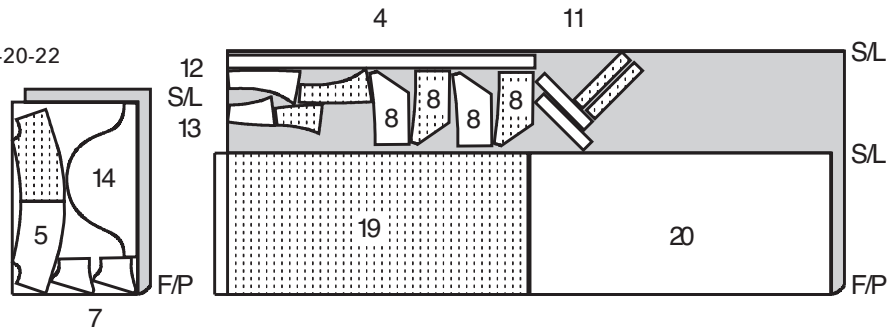
60" (150 CM)

SIZES: 6-8-10



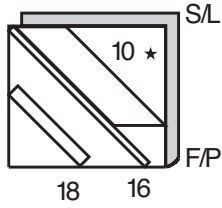
60" (150 CM)

SIZES: 12-14-16-18-20-22



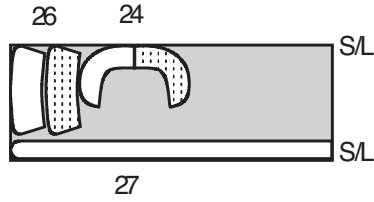
5 CONTRAST B

(CONTINUOUS BIAS, SLEEVE BINDING, BINDING)
 PIECES: 10, 16 & 18
 45", 60" (115, 150 CM)
 ALL SIZES



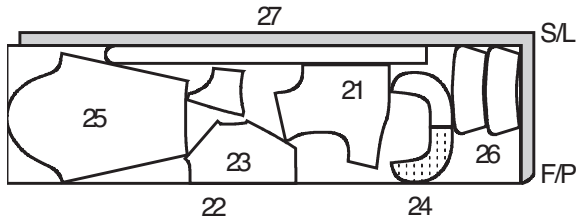
7 SEW-IN

(LIGHTWEIGHT) INTERFACING C
 PIECES: 24, 26 & 27
 18", 20" (46, 51 CM)
 ALL SIZES

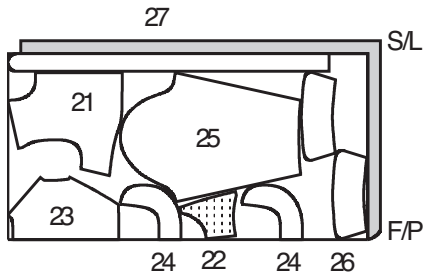


6 JACKET C

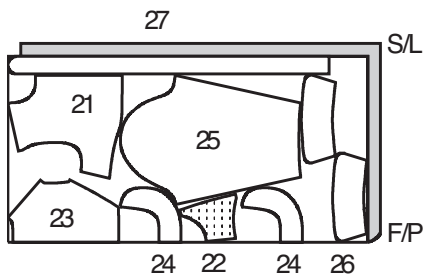
PIECES: 21, 22, 23, 24, 25, 26 & 27
 45" (115 CM)
 SIZES: 6-8-10-12-14-16



45" (115 CM)
 SIZES: 18-20-22

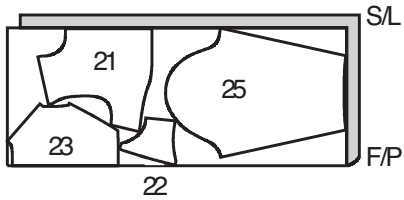


60" (150 CM)
 ALL SIZES



8 LINING C

PIECES: 21, 22, 23 & 25
 45" (115 CM)
 ALL SIZES



9 PURSE D

PIECES: 28 & 29
 45", 60" (115, 150 CM)
 ALL SIZES



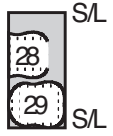
10 SEW-IN

(LIGHTWEIGHT) INTERFACING D

PIECES: 28 & 29

18",20" (46,51 CM)

ALL SIZES



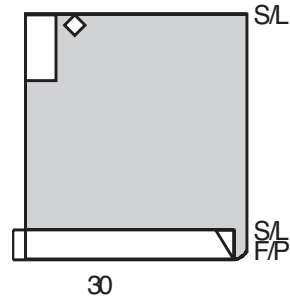
12 HAT TRIM E

PIECES: 30, 31 & 32

45",60" (115,150 CM)

ALL SIZES

31 32

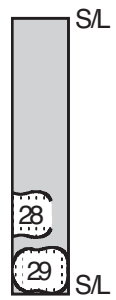


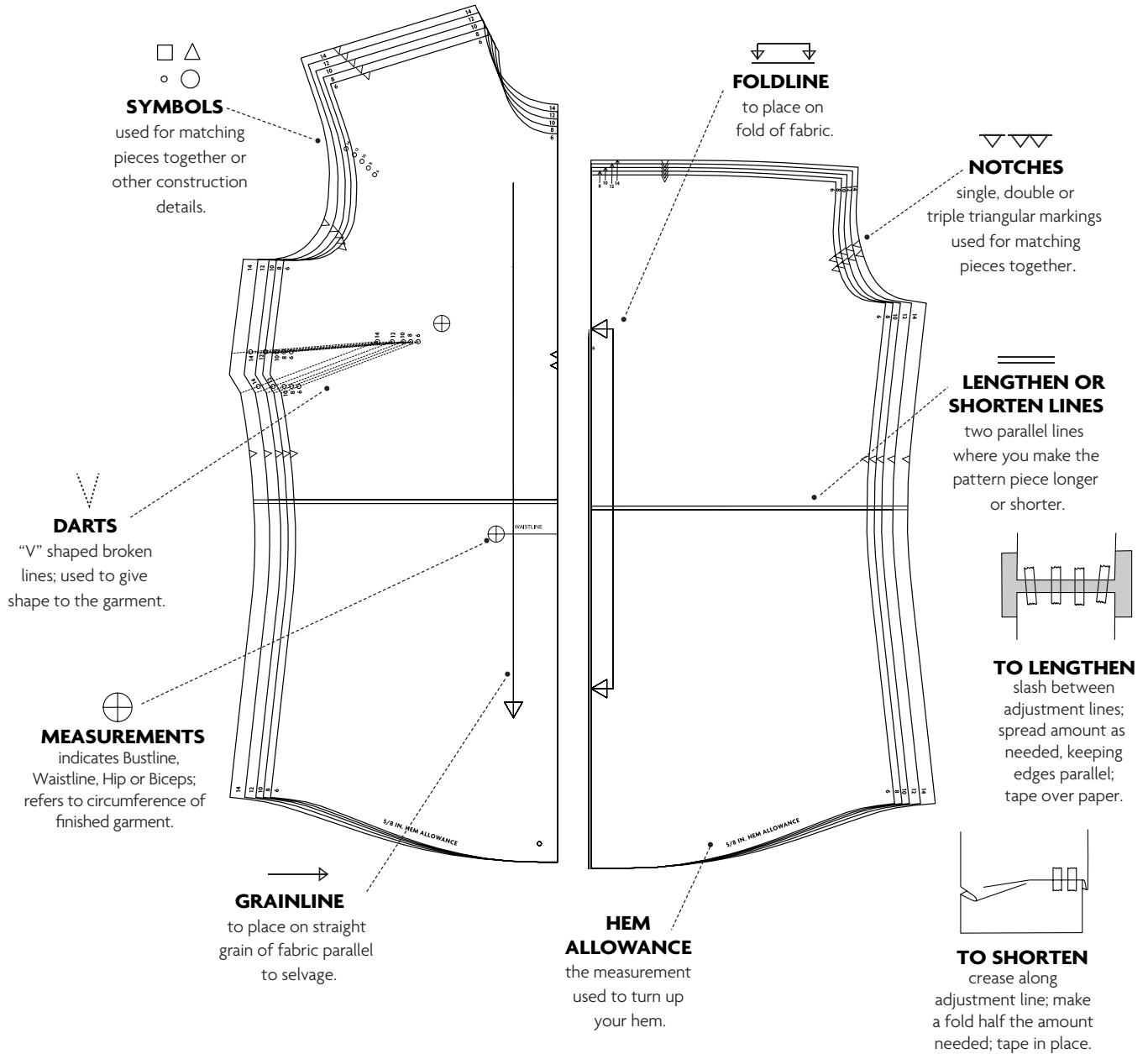
11 LINING D

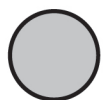
PIECES: 28 & 29

45" (115 CM)

ALL SIZES





FABRIC KEYRIGHT SIDE
FABRICWRONG SIDE
FABRIC

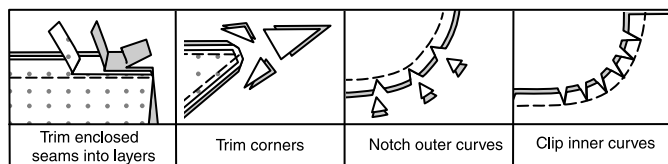
INTERFACING

RIGHT
SIDE LININGWRONG
SIDE LINING

PATTERN PIECES WILL BE IDENTIFIED BY NUMBERS THE FIRST TIME THEY ARE USED.

SEAM ALLOWANCES:

- > Use 5/8" (1.5 cm) seam allowances unless otherwise indicated.
- > Pin or baste seams, right side together, matching notches. Fit garment before stitching major seams.
- > Press seam allowances flat; then open unless otherwise stated. Clip where necessary so they lie flat.



The following terms appear in **BOLD TYPE** throughout your sewing instructions!

> FINISH

Stitch 1/4" (6mm) from raw edge and finish with one of the following: (1) Pink OR (2) Overcast OR (3) Turn in along stitching and stitch close to fold OR (4) Overlock.

OPTIONAL FOR HEMS: Apply Seam Binding.

> GATHER

Stitch along seamline and again 1/4" (6mm) away in seam allowance, using long machine stitches. Pull thread ends when adjusting to fit.

> PRICKSTITCH

Bring needle through all thicknesses to the upper side. Take a stitch back only one or two threads, forming a tiny surface stitch. Bring the needle out again a scant

1/4" (6mm) in front of stitch.

> REINFORCE

Stitch along seamline where indicated in sewing instructions, using small machine stitches.

> SLIPSTITCH

Slide needle through a folded edge, then pick up a thread of underneath fabric.

> STAYSTITCH

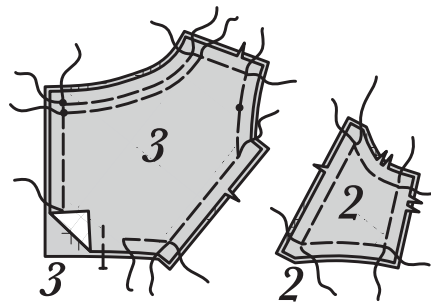
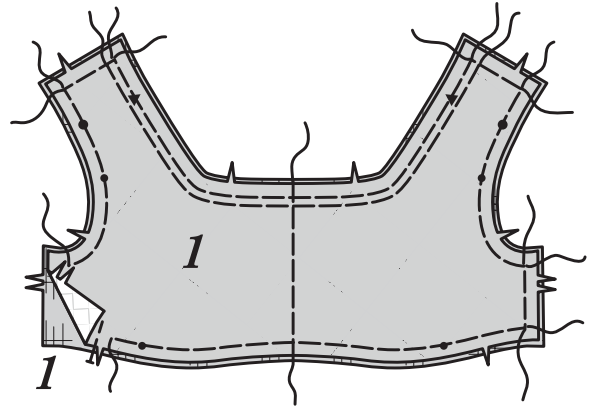
Stitch 1/8" (3mm) from seamline in seam allowance (usually 1/2" (13mm) from raw edge).

DRESS A,B**NOTE:** *Illustrated for View A, unless otherwise indicated.***BODICE FRONT AND BACK****VIEW A:**

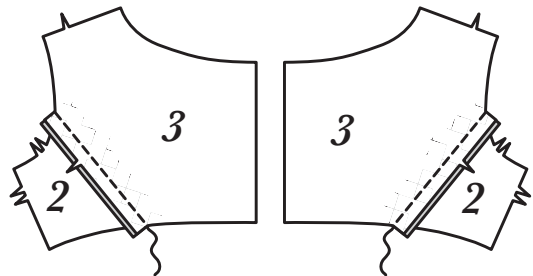
- 1** For underlining, working on a flat surface, pin lining to wrong side of each matching fabric section (sheer). Baste through all symbols and lines of construction, as shown, leaving both ends of thread free for easy removal.

Underline the following fabric (sheer) sections: BODICE FRONT (1), BODICE SIDE BACK (2), BODICE BACK (3).

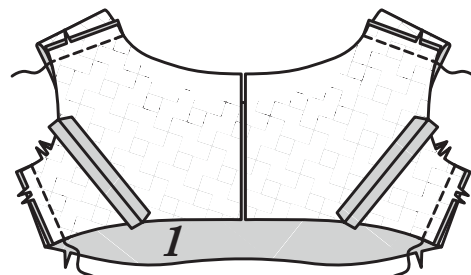
NOTE: *Underlining will not be shown in the following illustrations.*



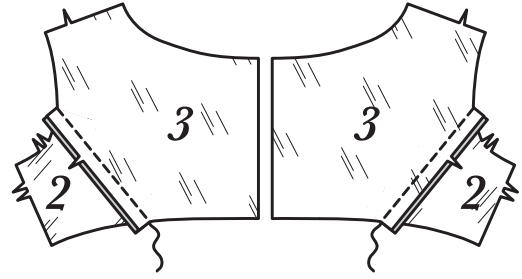
- 2** Stitch SIDE BACK (2) sections to side edges of BODICE BACK (3).



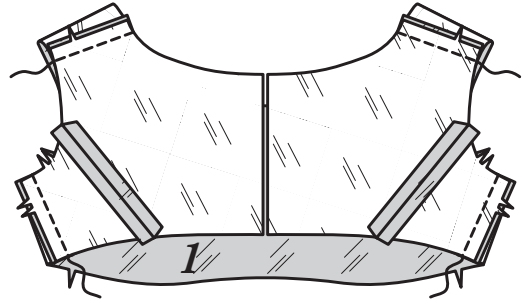
- 3** Stitch bodice backs to BODICE FRONT (1) at shoulders and sides.



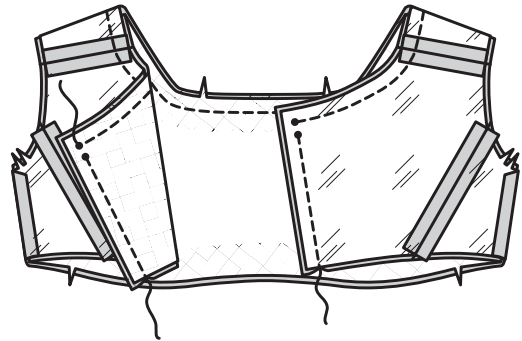
- 4 Stitch side back LINING (2) sections to side edges of bodice back LINING (3).



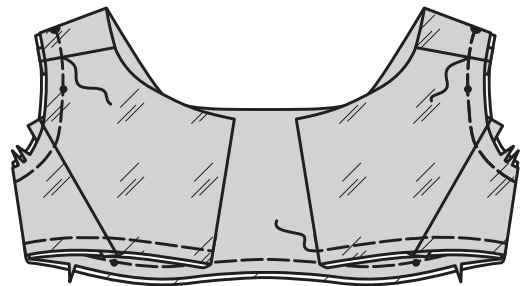
- 5 Stitch bodice back lining to bodice front LINING (1) at shoulders and sides.



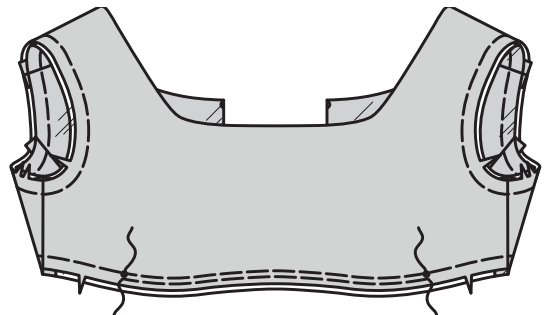
- 6 With right sides together, pin lining to bodice, matching symbols and seams and having raw edges even. Stitch neck and back opening edges, leaving open between small circles, as shown.



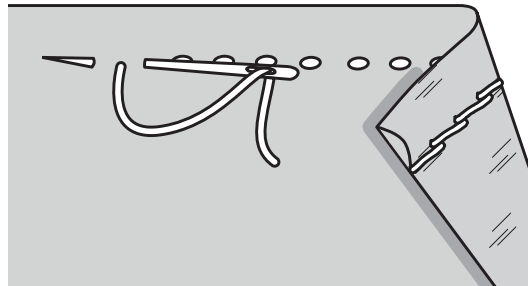
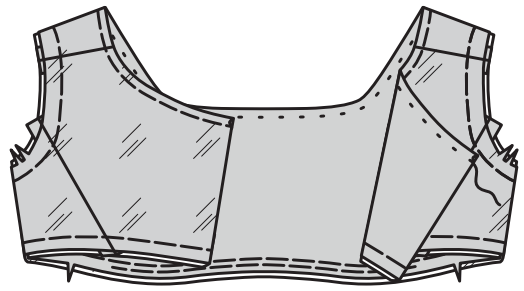
- 7 Turn lining to inside, press. Baste raw edges together at armhole and lower edges.



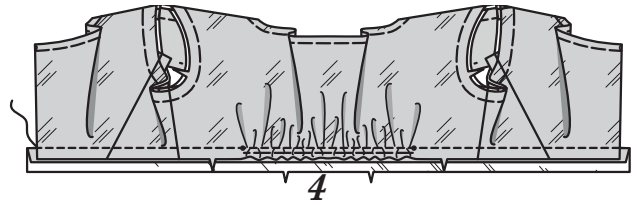
- 8 **GATHER** lower edge of bodice front between small circles.



- 9** To form casing for ribbon, sew $\frac{3}{8}$ " (1 cm) from finished edge of front and back neck edge, using a **PRICKSTITCH**.

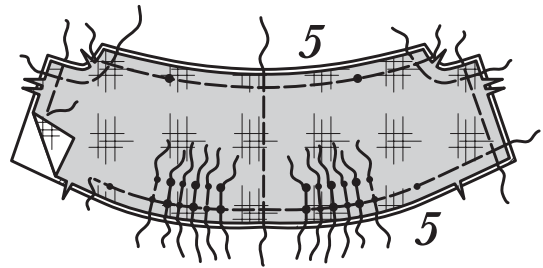


- 10** With right sides together, pin **INSET (4)** to lower edge of bodice, matching symbols and adjusting gathers. Stitch. Press seam toward inset.

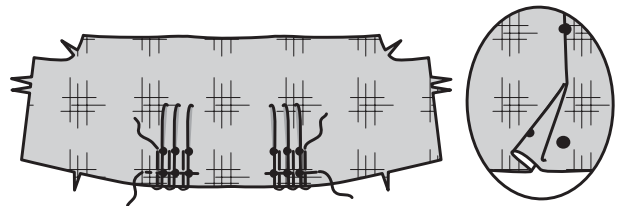


VIEW B:

- 11** For underlining, working on a flat surface, pin lining to wrong side of **BODICE FRONT (5)**. Baste through all symbols and lines of construction, as shown, leaving both ends of thread free for easy removal.

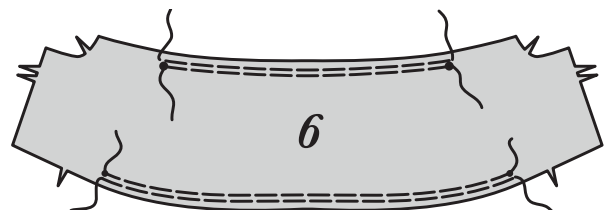


- 12** To make pleats in bodice front on outside, crease along lines of small circles. Bring creases to lines of large circles; baste. Baste across lower edge. Press.

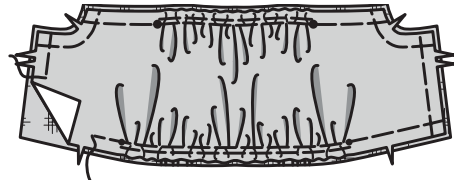


- 13** **GATHER** upper edge of **FRONT OVERLAY (6)** between large circles.

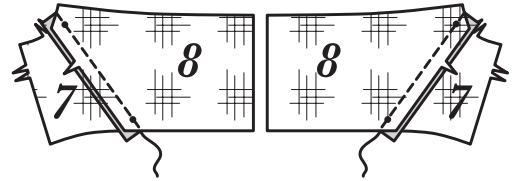
GATHER lower edge of front overlay between small circles.



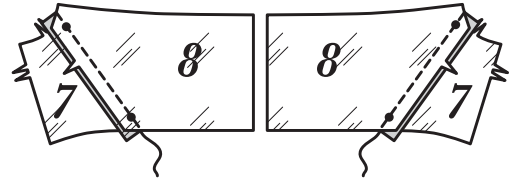
- 14** Pin wrong side of front overlay to right side of bodice front, adjusting gathers and matching symbols. Baste raw edges together.



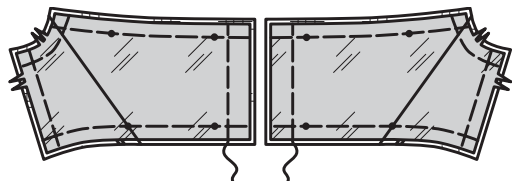
- 15** For UNDERLINING, stitch BODICE SIDE BACK (7) sections to side edges of BODICE BACK (8).



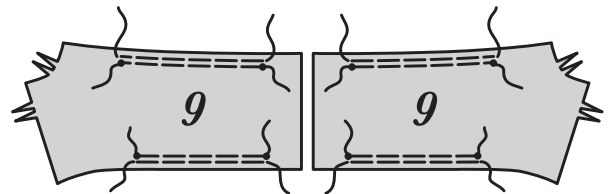
- 16** Stitch bodice side back LINING (7) sections to side edges of bodice back LINING (8).



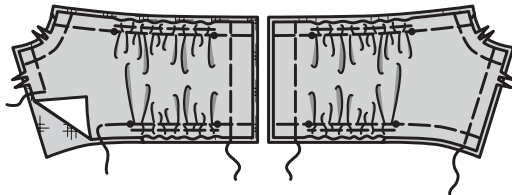
- 17** With wrong sides together, pin bodice back lining to bodice back underlining sections. Baste raw edges together along seamlines and foldlines.



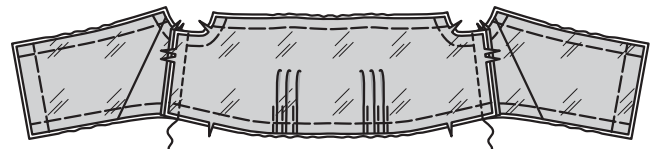
- 18** **GATHER** upper and lower edges of BACK OVERLAY (9) between small circles.



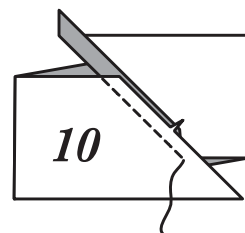
- 19** Pin wrong side of back overlay sections to right side of bodice back sections, adjusting gathers and matching symbols. Baste raw edges together along seamlines and foldlines.



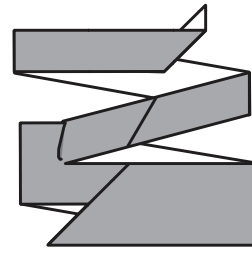
- 20** Stitch bodice backs to bodice front at sides.



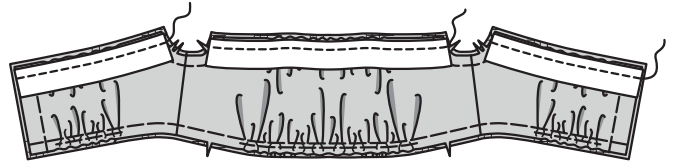
- 21** With right sides together, pin ends of CONTINUOUS BIAS (10) together, matching notches. Stitch. NOTE: Edges will not be even at ends of seam.



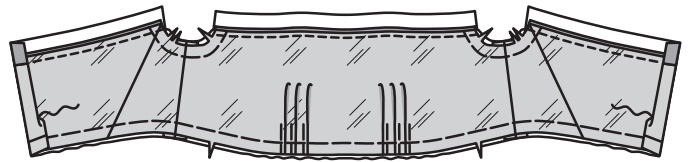
- 22** Starting at one extending end, cut along cutting line, forming one continuous bias strip, as shown.



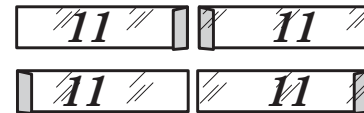
- 23** Cut bias strips the length of the upper edges of each bodice front and bodice back section. With right sides together, pin bias sections to upper edge of bodice front and bodice back, having upper raw edges even. Stitch in a $\frac{5}{8}$ " (1.5cm) seam. Trim. Press seam toward bias strip.



- 24** Turn bias sections up; press. Turn back opening edges to inside along foldlines, turning under $\frac{1}{4}$ " (6mm) on raw edges. Press. **SLIPSTITCH** pressed edges.



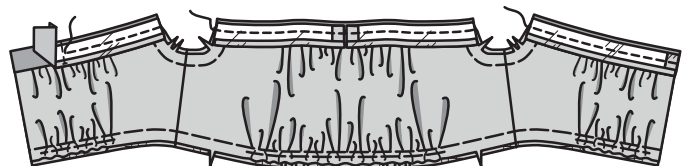
- 25** Turn center front and center back edges of CASING (11) sections to inside along seamlines, as shown. Press.



- 26** Turn lower edges of casing sections to inside along seamlines; press. Trim pressed edges to $\frac{3}{8}$ " (1cm).

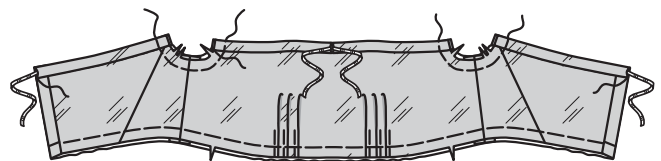


- 27** With right sides together, pin casing sections to upper edges of bias strips, placing pressed edges at center front and center back, as shown. Stitch in a $\frac{5}{8}$ " (1.5cm) seam. Trim.



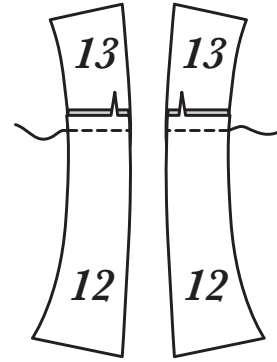
- 28** Turn casing sections to inside, over seam. **SLIPSTITCH** pressed edges.

Insert ribbon through casings, extending ends evenly at center front and center back. Baste ends of ribbon securely at armhole edges.

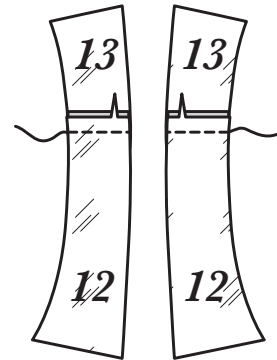


FRONT AND BACK YOKES B

- 29** Stitch FRONT YOKE (12) to BACK YOKE (13) at shoulder.

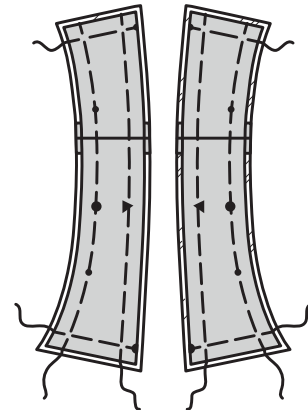


- 30** Stitch front yoke LINING (12) to back yoke LINING (13) at shoulder.



- 31** With wrong sides together, pin yoke sections to yoke lining. Baste raw edges together.

For bias binding, cut two pieces of continuous bias the length of front and back yokes.

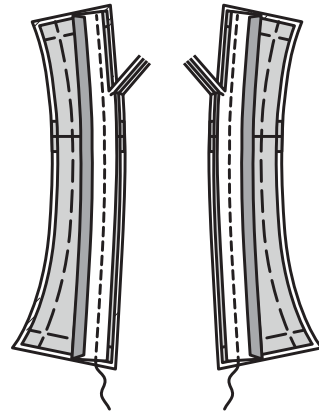


- 32** For binding, with wrong sides together, fold bias strip in half lengthwise. Press lightly.

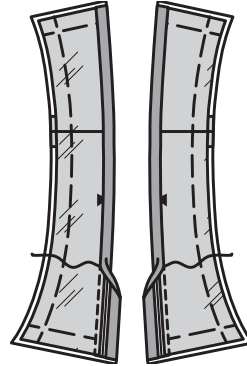
Open out binding. With wrong sides together, bring raw edges to center crease; press lightly.



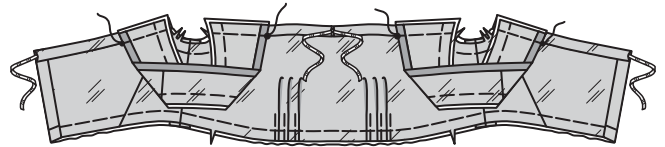
- 33** Open out one folded edge of binding. With right sides together, pin binding to inner edge of each front and back yoke section, having raw edges even. Stitch along seamline. Trim. Press seam toward binding.



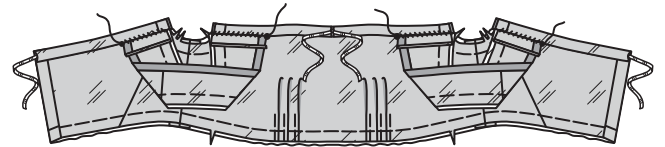
- 34** Turn binding to inside over seam. **SLIPSTITCH** pressed edge of binding over seam.



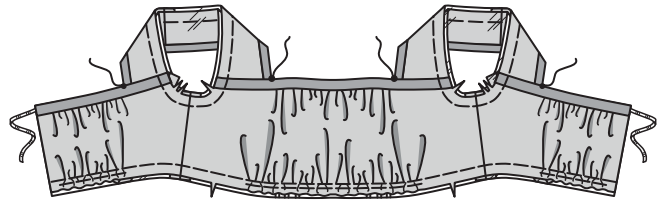
- 35** On inside, pin wrong side of yokes to upper edge of bodice front and bodice back matching seamlines and large and small circles. Baste along seamlines.



- 36** Turn down yoke seam allowances and **SLIPSTITCH** yokes to bodice, as shown, being careful not to catch ribbons in stitching.



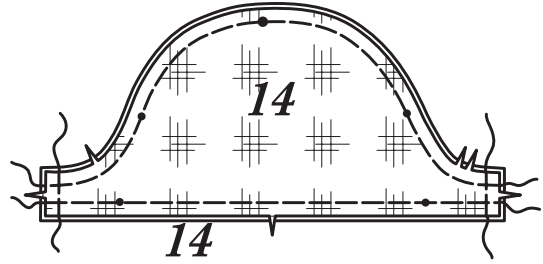
- 37** Turn yokes up. On outside sew yokes to upper edge of binding.



SLEEVE

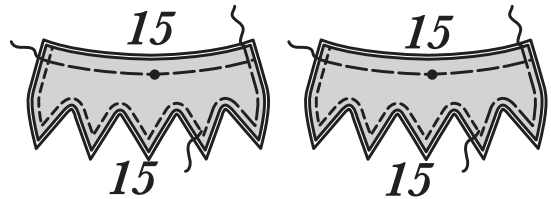
- 38** For underlining, working on a flat surface, pin lining to wrong side of SLEEVE (14). Baste through all symbols and lines of construction, as shown, leaving both ends of thread free for easy removal.

NOTE: *Underlining will not be shown in the following illustrations.*

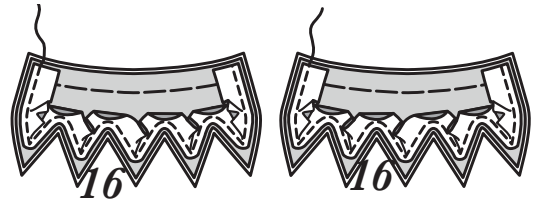


VIEW B:

- 39** Baste wrong sides of FLOUNCE (15) sections together, having raw edges even. Stitch $\frac{1}{4}$ " (6mm) from lower edge of flounce, as shown.



- 40** Pin BINDING (16) sections to lower edge of each flounce, stretching around curves and folding in fullness at corners, as shown. Stitch. Trim.

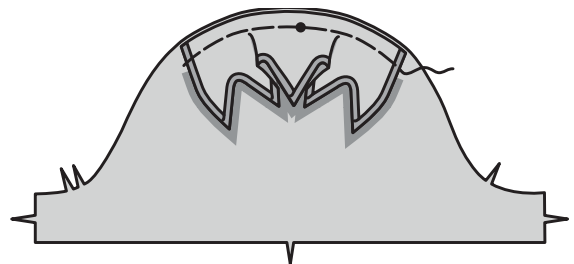


- 41** Turn binding to wrong side over seam, turning under $\frac{1}{4}$ " (6mm) on raw edge. **SLIPSTITCH**, folding in fullness, as necessary.



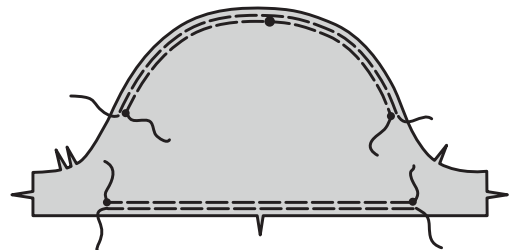
- 42** Pin flounce to upper edge of sleeve, matching large circles and having raw edges even; baste.

All views:

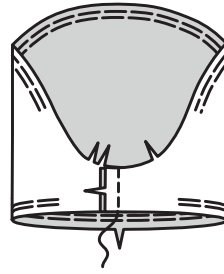


- 43** **GATHER** upper edge of sleeve between small circles.

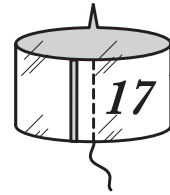
GATHER lower edge of sleeve between small circles.



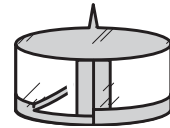
44 Stitch sleeve seam.



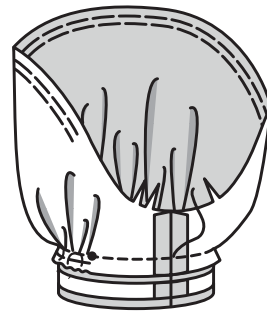
45 For cuff, stitch ends of SLEEVE BAND (17) or SLEEVE BINDING (18) together.



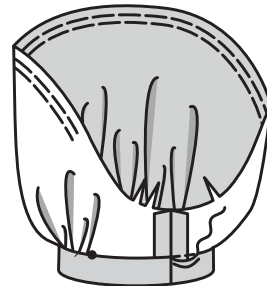
46 Turn lower edge of cuff to inside along seamline; press. Trim pressed edge to $\frac{3}{8}$ " (1cm).



47 Pin cuff to sleeve, matching symbols and seams. Adjust gathers; baste. Stitch. Trim. Press seam toward cuff.



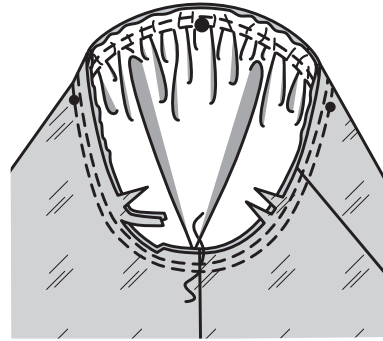
48 Turn cuff to inside along foldline; press. **SLIPSTITCH** pressed edge over seam.



49 View A: Pin ribbon trim to sleeve band, turning under ends to meet at sleeve seam. Stitch close to both long edges.



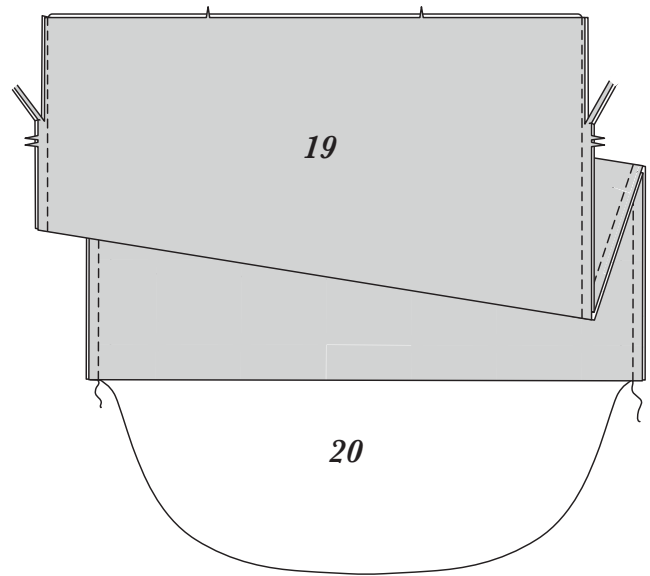
- 50** With right sides together, pin sleeve into armhole, matching large circles. Adjust gathers; baste. Stitch. Stitch again $\frac{1}{4}$ " (6mm) away in seam allowance. Trim close to stitching. Press seam allowances flat. Turn seam toward sleeve.



SKIRT

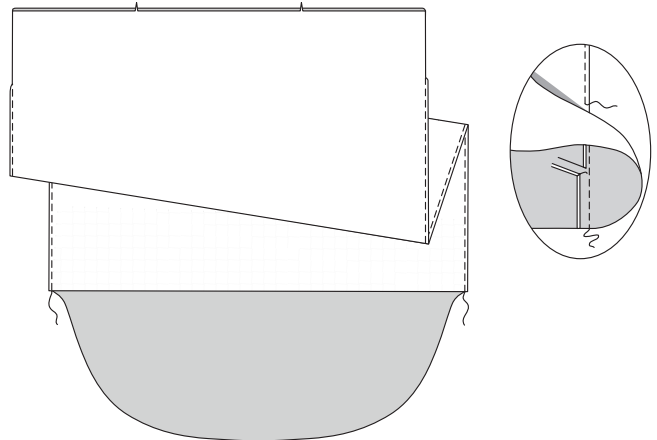
Stitch SKIRT FRONT (19) to SKIRT BACK (20) using a French seam.

- 51** To make French seam, with wrong sides together, stitch $\frac{1}{4}$ " (6mm) from seamline in seam allowance. Trim close to stitching.



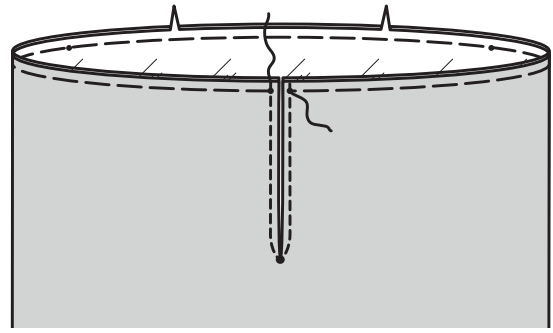
- 52** With right sides together, crease along seam; press. Stitch along seamline, encasing raw edges. Press seams toward back.

Prepare skirt LINING in same manner as skirt.



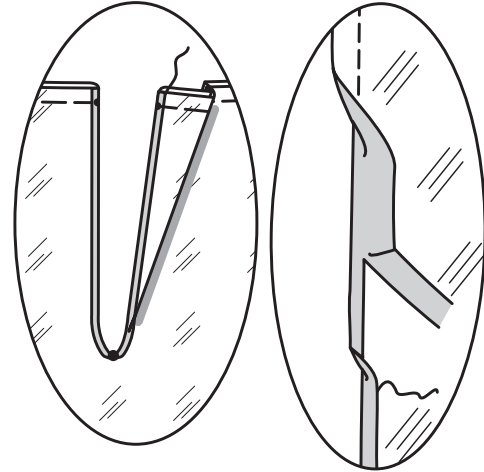
53 Pin wrong side of skirt to right side of lining, matching symbols and seams and having upper raw edges even. Baste upper edges together.

To **REINFORCE** back opening, stitch along stitching line pivoting at large circle, as shown. Slash between stitching to large circle.

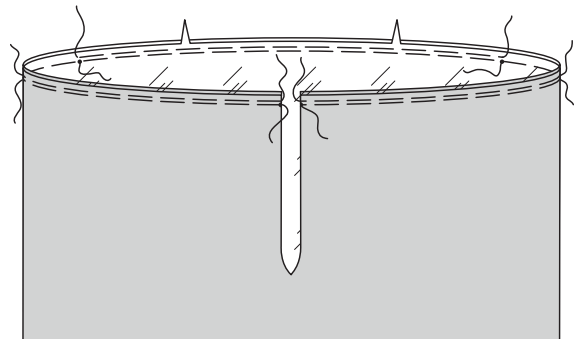


54 To hem back opening edges, turn in raw edges and press alongside stitching, as shown. Trim very close to stitching.

Turn in again along trimmed edge. Sew in place.



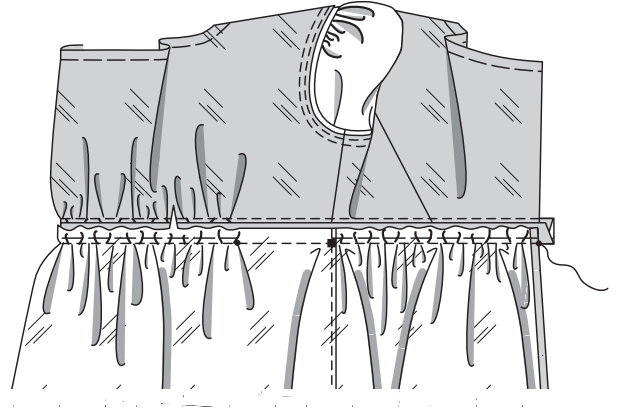
55 **GATHER** skirt front between small circles.
GATHER skirt back between side seams and back opening edges.



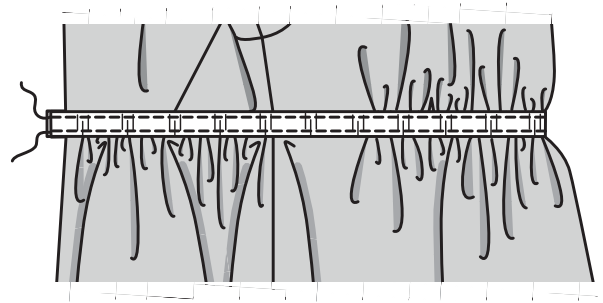
ATTACHING SKIRT TO BODICE

VIEW A:

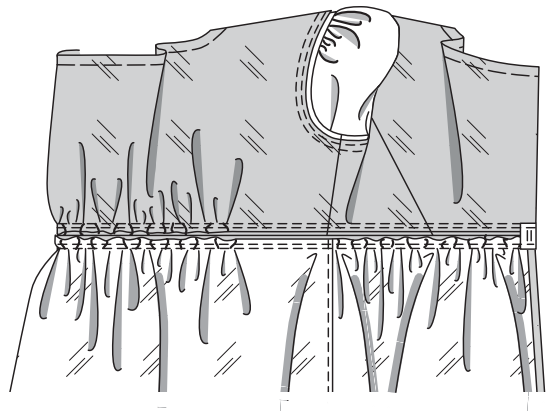
- 56** With right sides together, pin skirt to lower edge of inset, matching symbols and seams. Adjust gathers; baste. Stitch. Trim. Press seam toward inset.



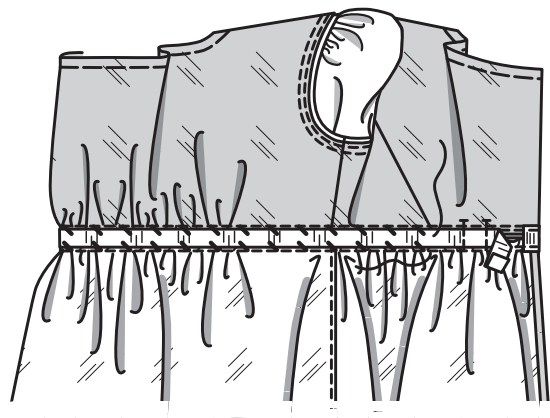
- 57** On outside, pin ribbon trim to inset. Stitch close to both long edges.



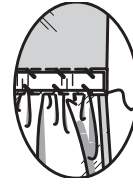
- 58** Turn end of inset and ribbon trim to inside at center back; press.



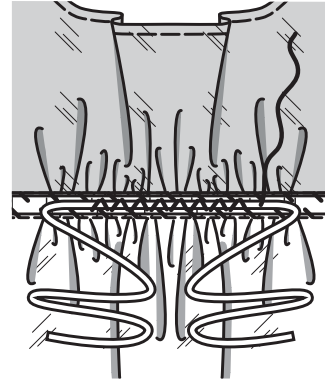
- 59** On inside, pin ribbon over inset seams, turning under ends at center back. **SLIPSTITCH** long edges of ribbon to bodice and skirt lining.



- 60** **SLIPSTITCH** end of ribbon to back opening.

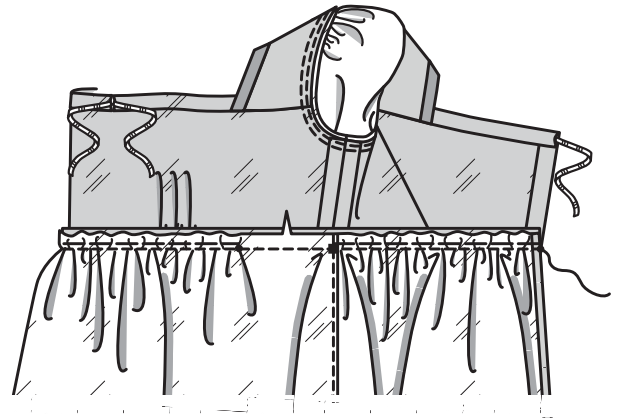


- 61** For inside tie, center shoelace over ribbon, at center front. Sew securely, by hand using a zigzag stitch.

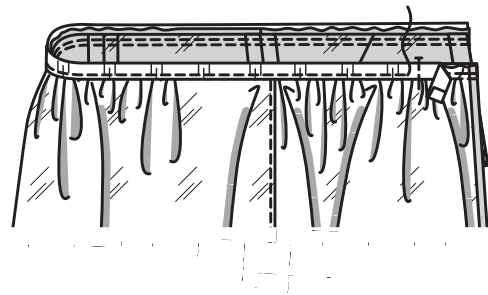


VIEW B:

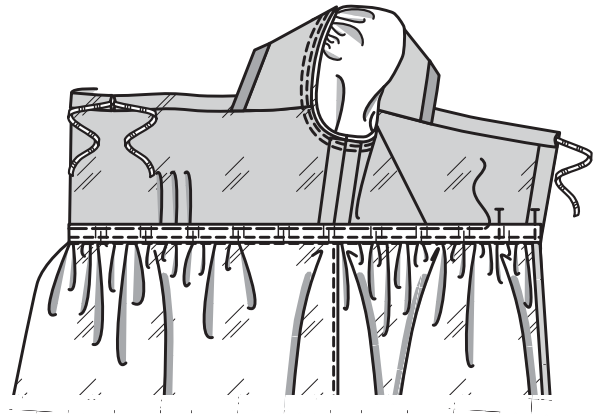
- 62** With right sides together, pin skirt to bodice, matching symbols and seams. Adjust gathers; baste. Stitch. Trim. Press seam toward bodice.



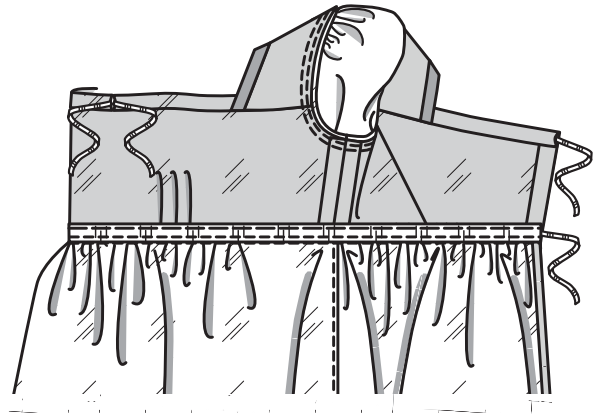
- 63** To form casing for ribbon tie, on inside pin ribbon to waist seam allowance, placing lower edge of ribbon along stitching, and turning under ends at back opening edge, as shown. Stitch close to lower edge of ribbon.



- 64** Turn bodice up. Pin upper edge of ribbon to bodice. Sew close to upper edge, through all thicknesses, using a **PRICKSTITCH**.



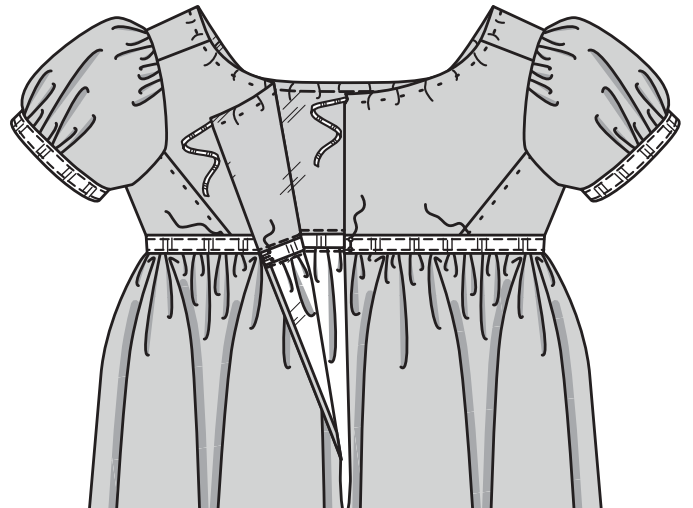
- 65** Insert ribbon through casing, extending ends evenly.



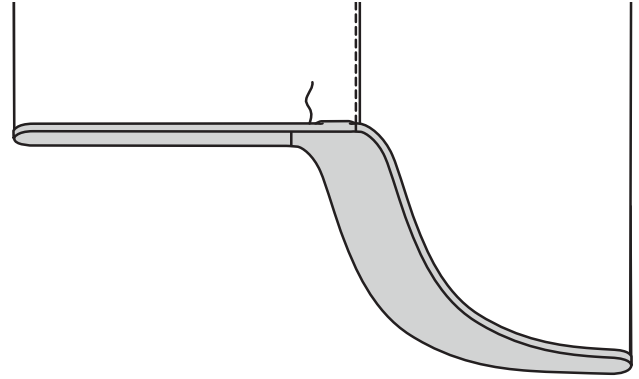
FINISHING

VIEW A:

- 66** Insert ribbon through casing at neck edge, extending ends evenly, as shown. Sew hook and eye to ribbon at back opening edges, as shown. Stitch $\frac{1}{8}$ " (3mm) from bodice side back seam using a **PRICKSTITCH**.

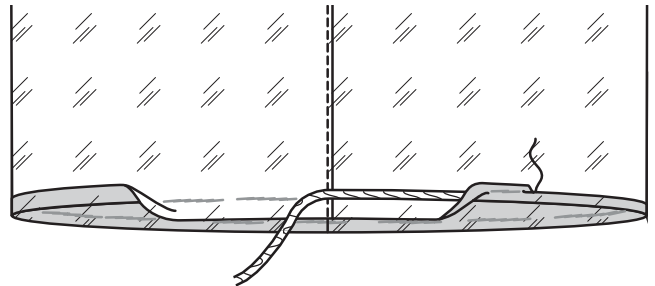


- 67** Turn up 5/8" (1.5cm) hem, turning under 1/4" (6mm) on raw edge. Sew hem in place. Press.



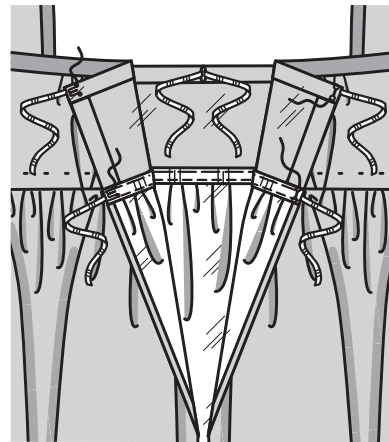
- 68** Turn up 1 1/2" (3.8cm) hem on lower edge of lining; press.

Open out lining hem, place cord along hemline, as shown. Turn hem up over cord, turning in 1/4" (6mm) on raw edge. Sew hem in place.



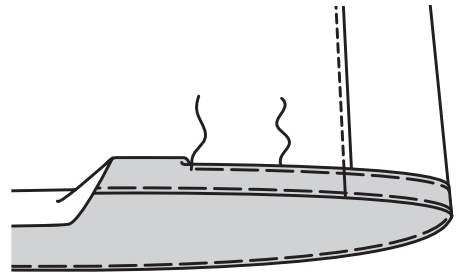
VIEW B:

- 69** Sew hooks and eyes to casing and ribbon at back opening edges, as shown.



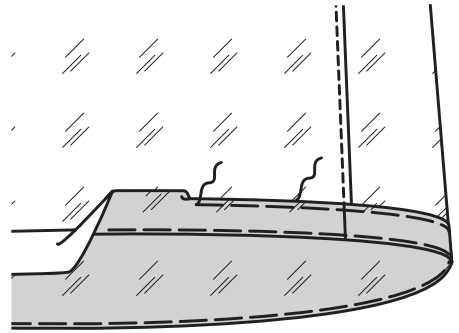
- 70** Turn up hem. Baste close to fold. Turn in ¼" (6mm) on raw edge. Baste hem in place close to upper edge. Press.

Sew hem in place. Press.



- 71** Turn up lining hem. Baste close to fold. Turn in ¼" (6mm) on raw edge. Baste hem in place close to upper edge. Press.

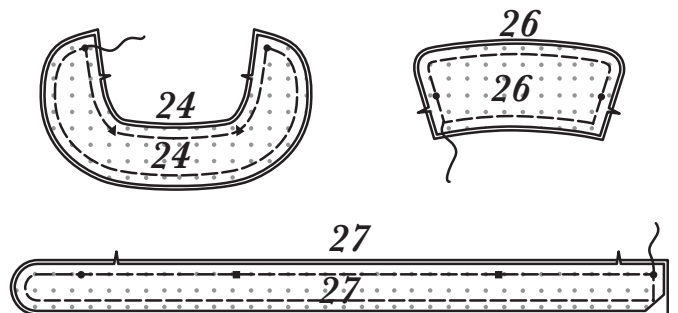
Sew hem in place. Press.



JACKET C

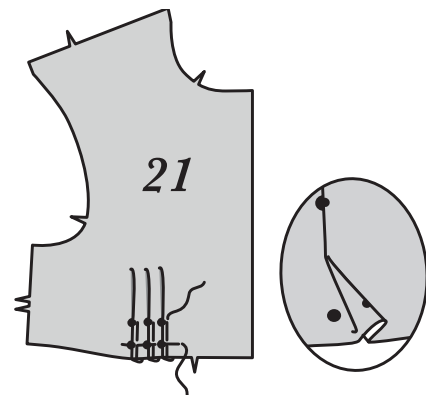
INTERFACING

- 1** Pin INTERFACING to wrong side of corresponding fabric sections. Trim outer corners of interfacing. Baste along seamlines.

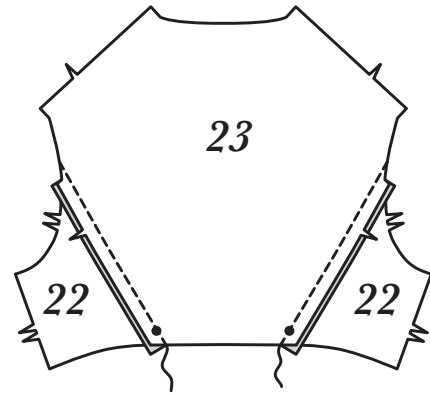


FRONT AND BACK

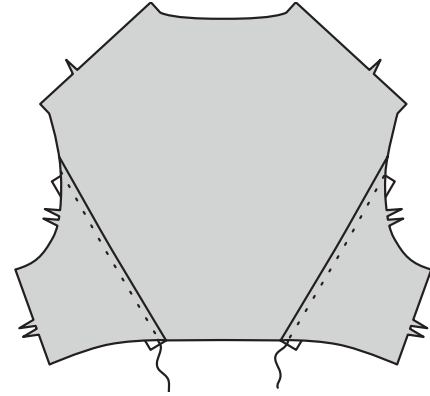
- 2** To make pleats in FRONT (21) on outside, crease along lines of small circles. Bring creases to lines of large circles; baste. Baste across lower edge. Press.



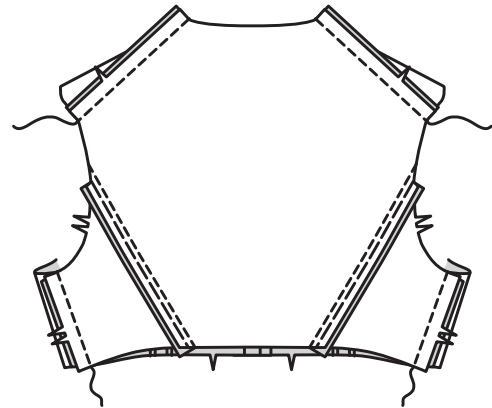
- 3** Stitch SIDE BACK (22) sections to side edges of BACK (23). Press seams toward side back.



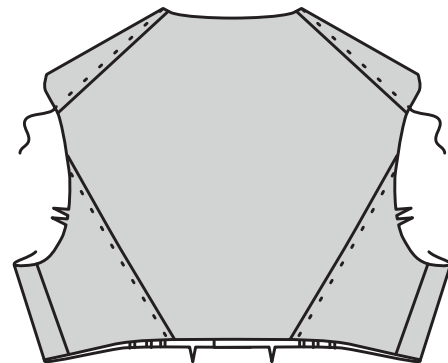
- 4** On outside, sew $\frac{1}{4}$ " (6mm) from side back seam using a **PRICKSTITCH**.



- 5** Stitch back and front together at shoulders and sides. Press side seams open and shoulder seams toward front.

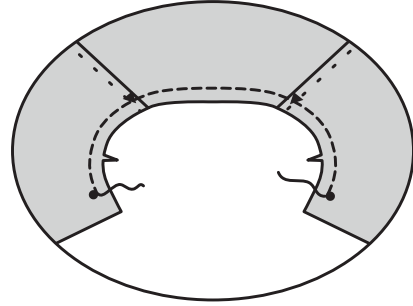


- 6** On outside, sew $\frac{1}{4}$ " (6mm) from shoulder seam using a **PRICKSTITCH**.

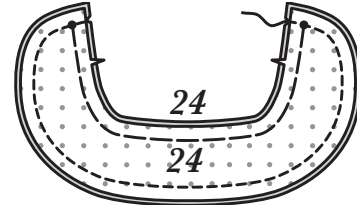


COLLAR

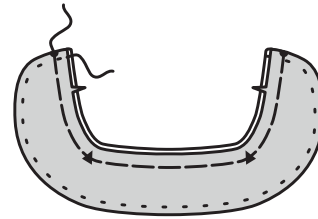
7 **STAYSTITCH** neck edge of jacket.



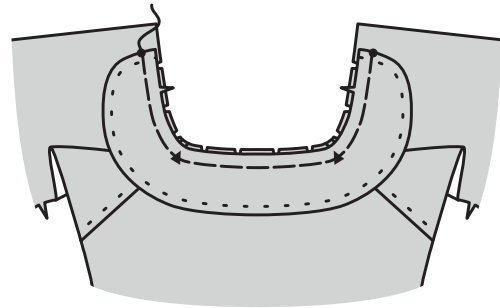
8 Stitch COLLAR (24) sections together, leaving notched edge open. Trim.



9 Turn. Press. Baste raw edges together. Sew $\frac{1}{4}$ " (6mm) from finished edges using a **PRICKSTITCH**.

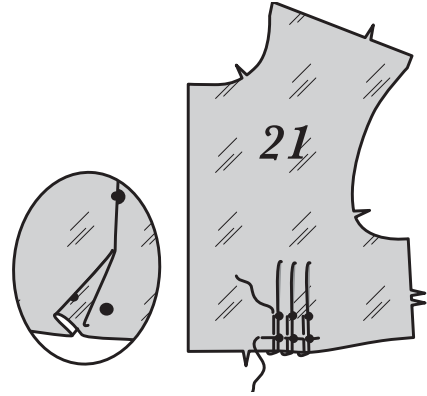


10 Pin collar to neck edge, interfaced side down, clipping jacket where necessary. Baste.

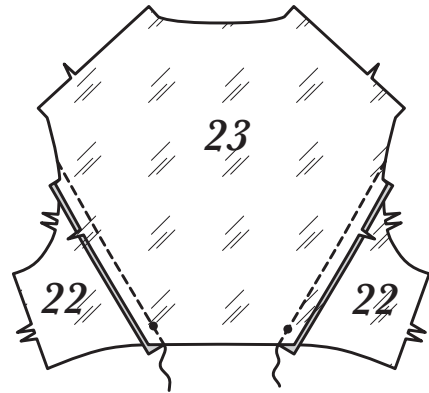


LINING

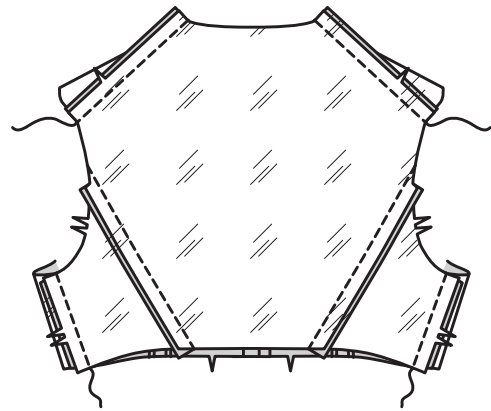
- 11** To make pleats in front LINING (21) on outside, crease along lines of small circles. Bring creases to lines of large circles; baste. Baste across lower edge. Press.



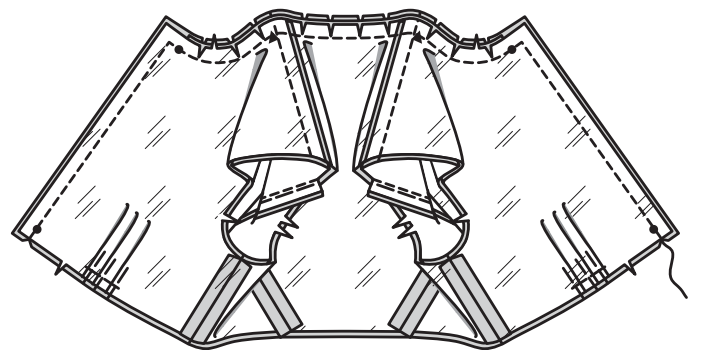
- 12** Stitch side back LINING (22) sections to side edges of back LINING (23). Press seams toward side back.



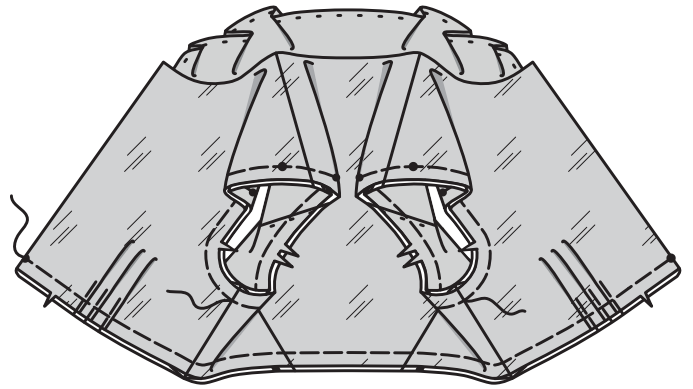
- 13** Stitch back lining and front lining together at shoulders and sides. Press side seams open and shoulder seams toward front.



- 14** With right sides together, pin lining to jacket, over collar, matching symbols and seams clipping lining where necessary. Stitch front opening and neck edges. Trim.

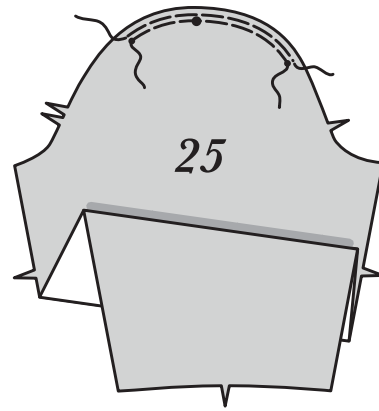


- 15** Turn lining to inside, turning collar out; press. Baste armhole and lower raw edges together.

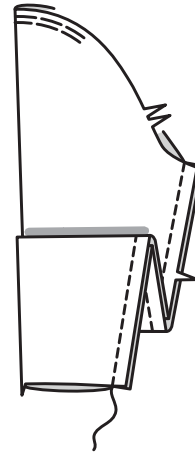


SLEEVE

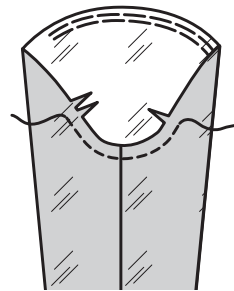
- 16** **GATHER** upper edge of SLEEVE (25) between small circles, as shown.



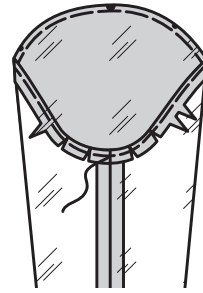
- 17** Stitch sleeve seam.
Prepare sleeve LINING in same manner as sleeve.



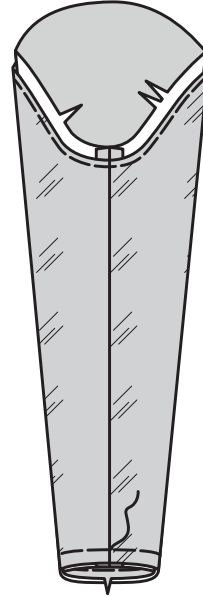
- 18** **STAYSTITCH** underarm of sleeve lining below notches.



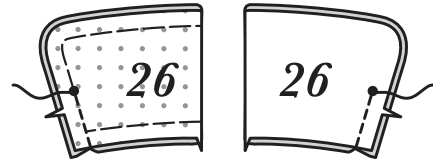
- 19** Turn in seam allowance on upper edge of sleeve lining, clipping where necessary; baste. Press.



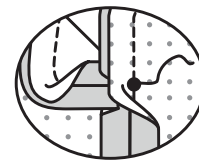
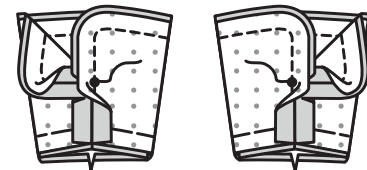
- 20** Slip sleeve lining over sleeve, matching seams. Baste lower raw edges together.



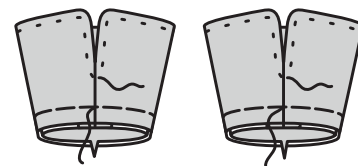
- 21** Stitch ends of each CUFF (26) section together below large circle, as shown.



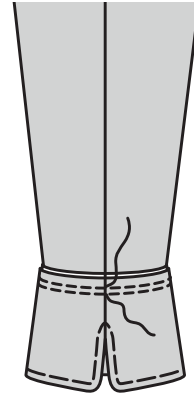
- 22** Stitch uninterfaced cuff sections to interfaced cuff sections, breaking stitching at large circles and leaving notched edge open. Trim.



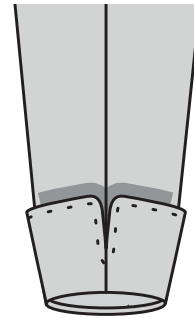
- 23** Turn. Press. Baste raw edges together. Sew $\frac{1}{4}$ " (6mm) from finished edges using a **PRICKSTITCH**.



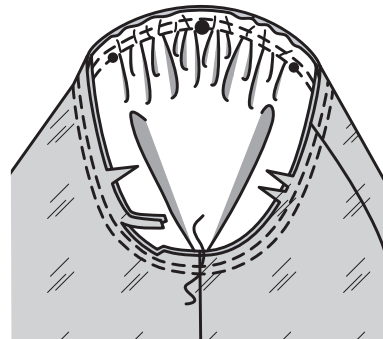
- 24** Pin right side of cuff to wrong side of sleeve. Stitch. Stitch again $\frac{1}{4}$ " (6mm) away in seam allowance. Press seam toward sleeve.



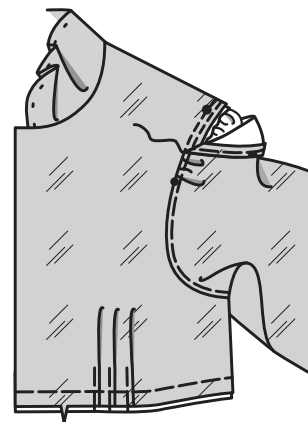
- 25** Turn cuff up; press lightly.



- 26** With right sides together, pin sleeve into armhole, matching large circles and small circles. Adjust gather; baste. Stitch. Stitch again $\frac{1}{4}$ (6mm) away in seam allowance. Trim close to stitching. Press seam allowances flat. Turn seam toward sleeve.

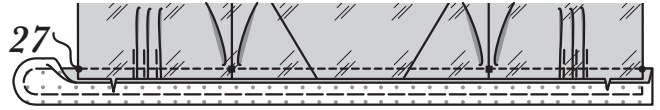


- 27** Slip sleeve lining over sleeve. Pin basted edge over armhole seam, matching underarm seams and large circles and small circles. Adjust gathers; **SLIPSTITCH**.

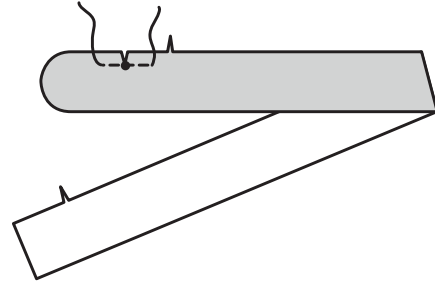


BAND AND FINISHING

28 With right sides together, pin interfaced BAND (27) to lower edge of jacket, matching centers and symbols, placing squares at side seams. Stitch. Trim.



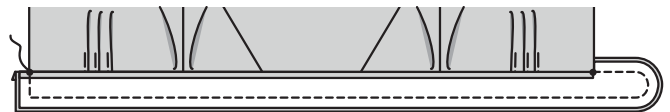
29 **REINFORCE** upper edge of band facing through large circle. Clip to large circle.



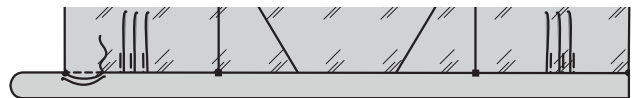
30 Turn in $\frac{5}{8}$ " (1.5cm) on upper edge of band facing. Press. Trim pressed seam allowance to $\frac{3}{8}$ " (1cm).



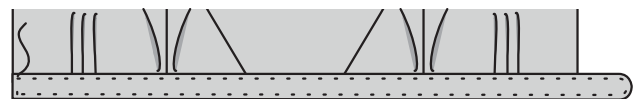
31 With right sides together, pin band facing to band, matching symbols and having raw edges even. Stitch between large circles, as shown. Trim.



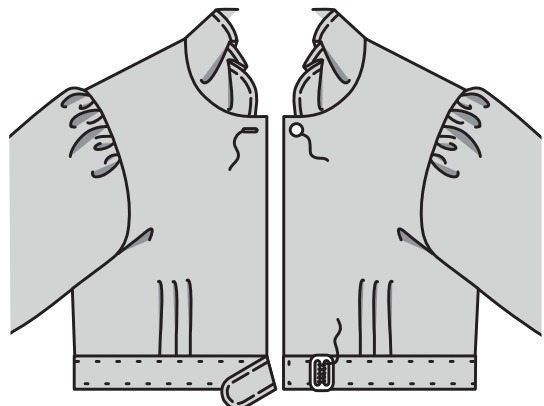
32 Turn band facing to inside; press. **SLIPSTITCH** pressed edge over seam.



33 Sew $\frac{1}{4}$ " (6mm) from all edges of band using a **PRICKSTITCH**.

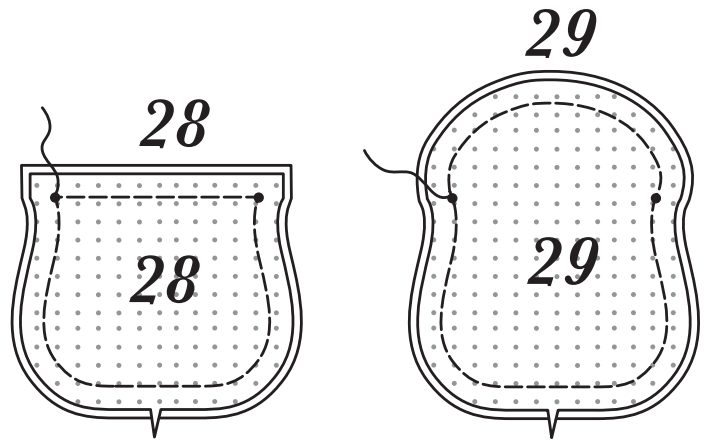


34 Sew buckle to left front band at marking. Make buttonhole in right front at marking. Sew button to left front at marking.

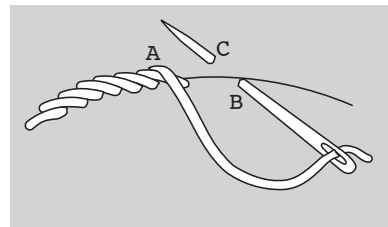
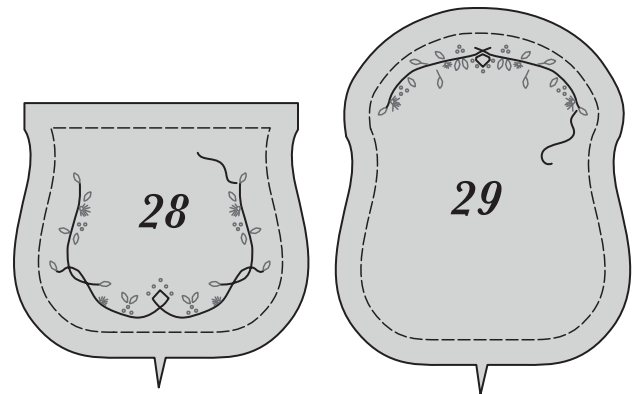


PURSE D**INTERFACING**

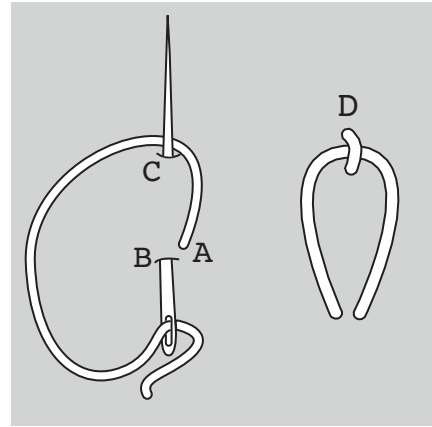
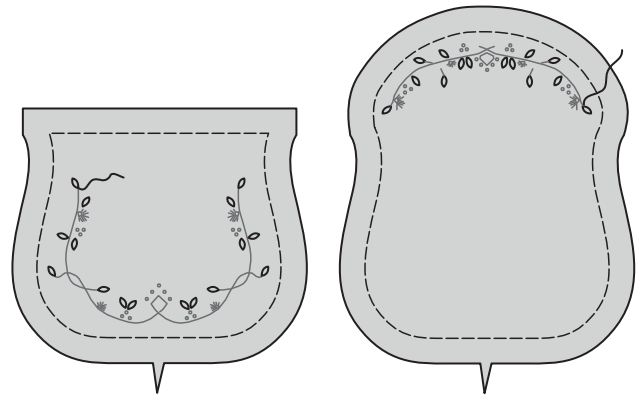
- 1 Pin INTERFACING to wrong side of corresponding fabric sections. Baste along seamlines.

**EMBROIDERY**

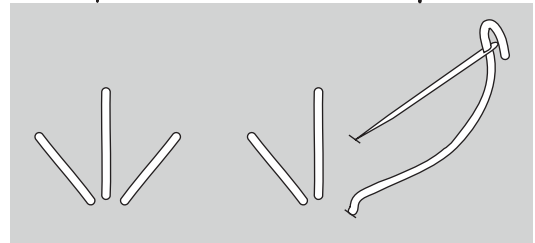
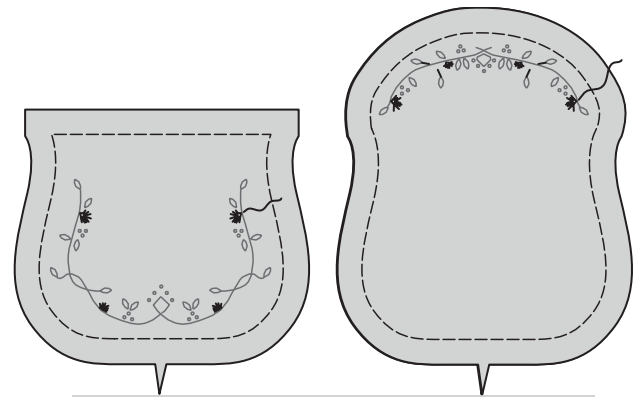
- 2 Using brown embroidery floss, work stem stitch on highlighted lines on FRONT (28) and BACK (29).



- 3 Using green embroidery floss, make lazy daisy stitches on highlighted lines on front and back.

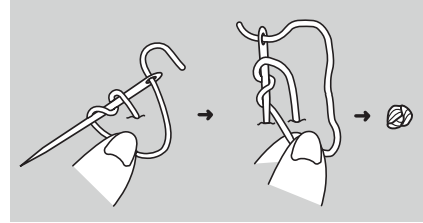
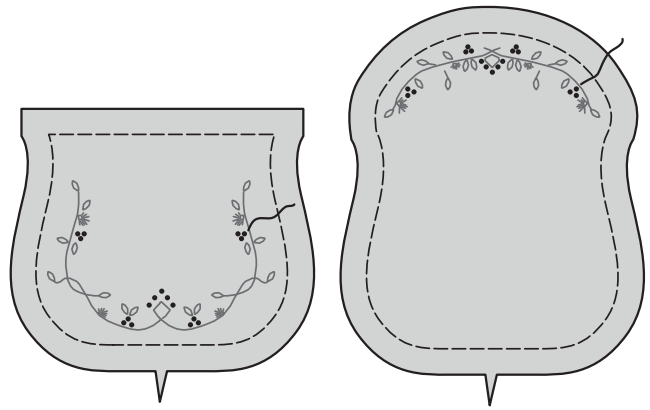


- 4 Using yellow and lilac embroidery floss make straight stitches on highlighted lines on front and back.



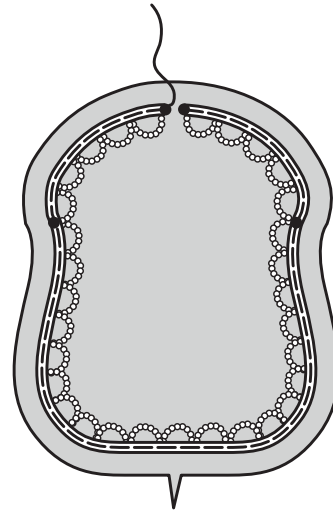
- 5** Using pink and lilac embroidery floss make french knots on highlighted dots on front and back.

Embroidery will not be shown in the following illustrations.

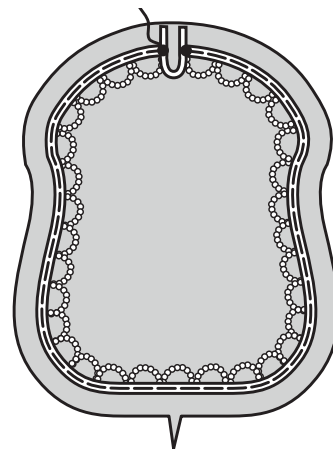


FRONT AND BACK

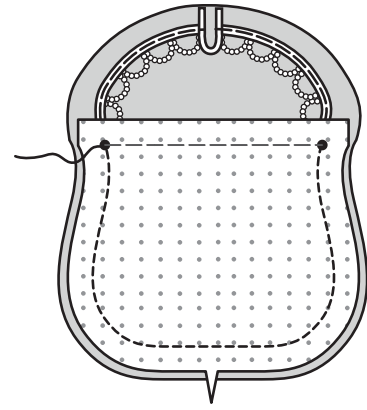
- 6** Pin bead trim to outer edge of back, between small circles, placing bound edge along seamline. Baste.



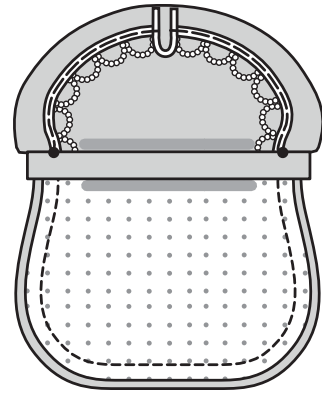
- 7** Using soutache make a $\frac{3}{8}$ " (1cm) loop between small circles at upper edge of back. Tack ends securely.



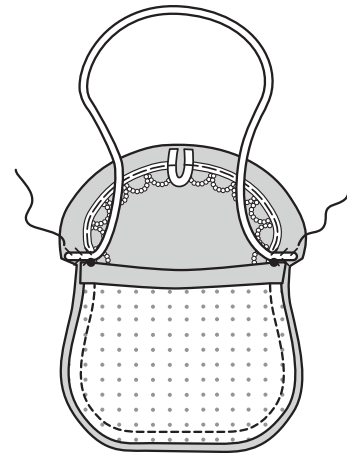
- 8** With right sides together, pin front to back, matching symbols and having raw edges even. Stitch, leaving open above small circles.



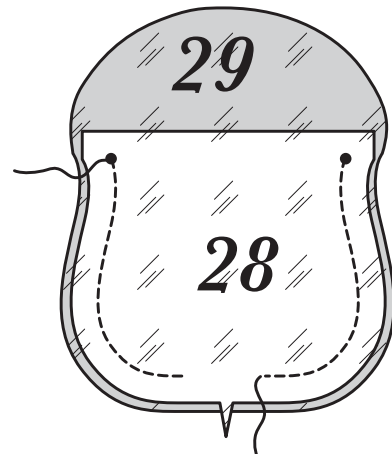
- 9** Turn straight edge of front to inside along seamline; press.



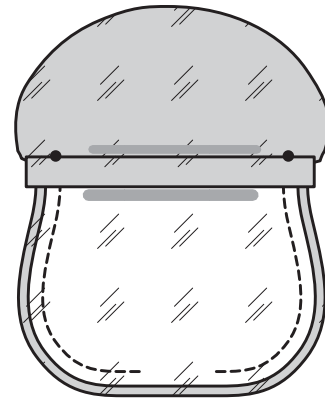
- 10** Pin rattail cord to back seam allowance, at small circles. Sew securely, keeping front free.



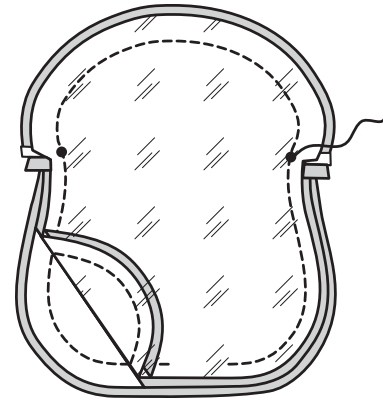
- 11** With right sides together, pin front LINING (28) to back LINING (29), matching symbols and having raw edges even. Stitch, between small circles, leaving an opening for turning at lower edge.



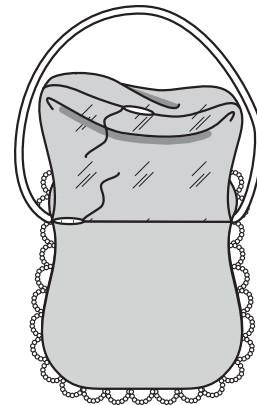
- 12** Turn straight edge of front lining to inside along seamline; press.



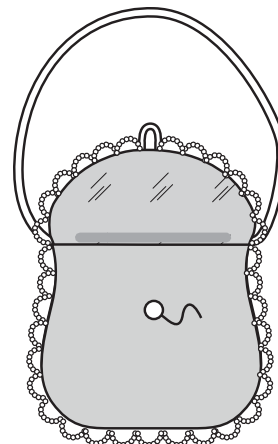
- 13** With right sides together, pin lining to purse, at upper edge, matching symbols and having raw edges even. Stitch flap between small circles, as shown.



- 14** Turn purse right side out. **SLIPSTITCH** opening in lower edge of lining. **SLIPSTITCH** pressed edges of front and lining together.



- 15** Turn lining to inside. Sew button to front at marking.

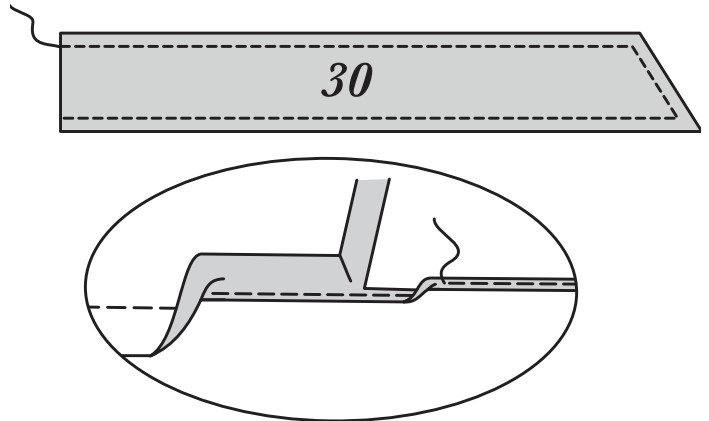


HAT TRIM E

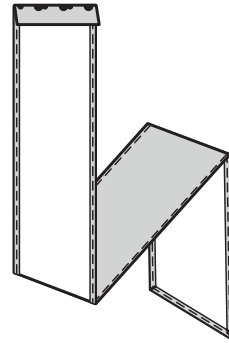
TIE ENDS AND BOW

- 1** To hem lower and long edges of TIE END (30), stitch $\frac{1}{2}$ " (1.3cm) from raw edges.

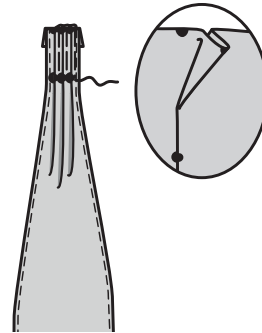
Turn in and press edge alongside stitching, as shown. Trim very close to stitching. Turn in again along trimmed edge. Stitch in place.



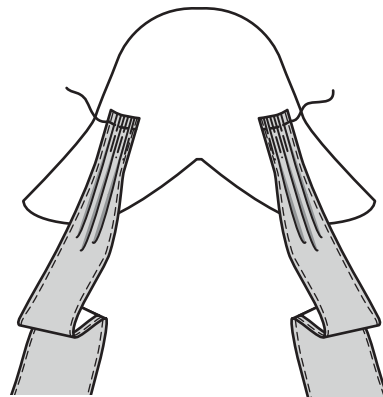
- 2** Turn upper end of tie end to inside along fold line; press.



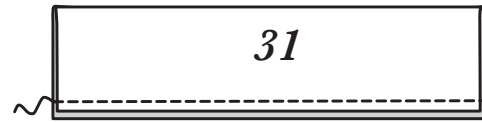
- 3** To make pleats in tie end on outside, crease along lines of small circles. Bring creases to lines of large circles; baste. Baste along stitching line. Press.



- 4** Pin tie ends to purchased hat, as desired. Sew in place along stitching line.



- 5 With right sides together, fold BOW (31) along foldline. Stitch long edge. Trim.



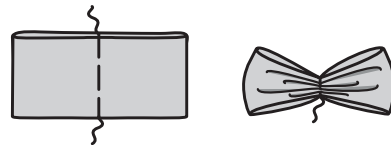
- 6 Turn. Press lightly. Baste raw edges together.



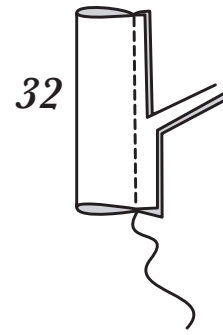
- 7 Lap ends at back of bow, matching seamlines to center, as shown. Baste along seamline, through all thicknesses.



- 8 To **GATHER** bow, stitch along center, using long machine stitches. Adjust gathers as tightly as possible. Secure threads.



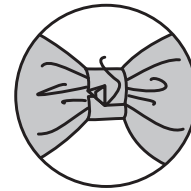
- 9 Fold KNOT (32) in half lengthwise. Stitch long edge. Trim.



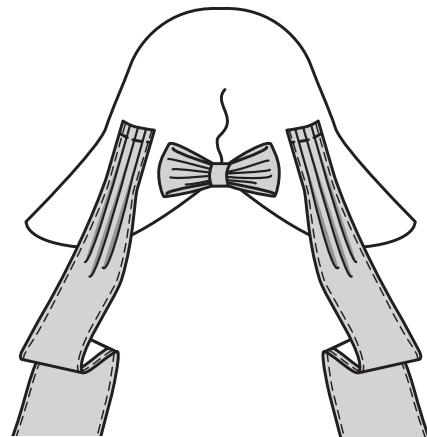
- 10 Turn. Press lightly.

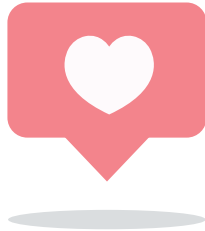


- 11 Center knot over bow, turning in seam allowance on one end, lapping over remaining end. **SLIPSTITCH** in place.



- 12 Pin bow to purchased hat, at center back. Sew knot securely in place.





Congrats!
You've completed your sewing adventure!

**SHARE
YOUR** look!



Post your pattern and tag us at
@McCALLPATTERNCOMPANY and use #MCCALLSPATTERNS
for a chance to be featured on our social media!

Look for more McCall's PDF patterns at **McCALLPATTERN.COM**

 1-800-255-2762

Copyright © 2019 CSS Industries, Inc. All Rights Reserved.
Sold for individual home use only and not for commercial or manufacturing purposes.