



PDF PATTERNS

M7948

>> MISSES'
DRESSES

02

PIECES AND
NOTIONS

03

CHARTS

04

CUTTING
LAYOUTS

07

PATTERN
MARKINGS

08

GLOSSARY

10

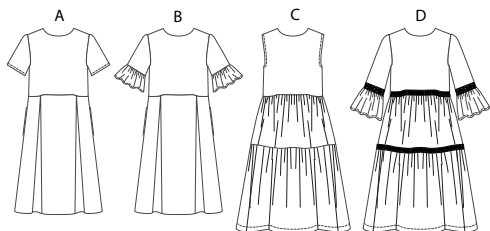
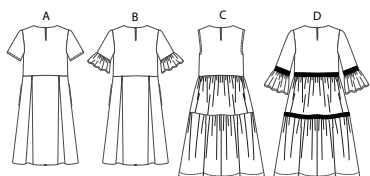
SEWING
INSTRUCTIONS



McCALL'S®

SKILL LEVEL: EASY

Find the Perfect Fit!

FRONT
FRENTEBACK
ESPALDA

THINGS YOU NEED:

- > A,B,C,D: One ½" Button.
- > B,C: One Pkg. of ½" Single Fold Bias Tape.
- > B,D: 4 yds. of 1" - 2" Wide Trim Lace.

SUGGESTED FABRICS:

- > Dobby, Swiss Dot, Linen, Crepes.

Your printed tile pieces should be assembled before you move on to this step!

PIECES (12)

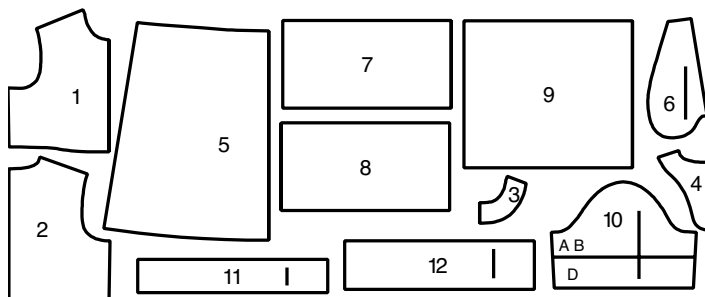
DRESS A, B, C, D

12 SLEEVE RUFFLE D

- 1 BODICE FRONT
- 2 BODICE BACK
- 3 FRONT NECK FACING
- 4 BACK NECK FACING
- 5 SKIRT FRONT AND BACK
A,B
- 6 POCKET A,B
- 7 SKIRT FRONT C,D
- 8 SKIRT BACK C,D
- 9 FRONT AND BACK
RUFFLE C,D
- 10 SLEEVE A,B,D
- 11 SLEEVE RUFFLE B

12 PATTERN PIECES

12 PIEZAS DE PATRON



CHARTS

YARDAGE CHARTS

SIZES	6	8	10	12	14	16	18	20	22	
VIEW A										
45**	2 $\frac{5}{8}$	2 $\frac{5}{8}$	2 $\frac{3}{4}$	2 $\frac{3}{4}$	2 $\frac{3}{4}$	3	3	3	3	yds.
60**	2	2	2	2 $\frac{1}{8}$	2 $\frac{1}{8}$	2 $\frac{1}{8}$	2 $\frac{1}{4}$	2 $\frac{1}{4}$	2 $\frac{3}{8}$	yds.
VIEW B										
45***	3 $\frac{1}{8}$	3 $\frac{1}{8}$	3 $\frac{1}{8}$	3 $\frac{1}{8}$	3 $\frac{1}{8}$	3 $\frac{1}{8}$	3 $\frac{1}{8}$	3 $\frac{1}{4}$	3 $\frac{1}{4}$	yds.
60***	2 $\frac{1}{8}$	2 $\frac{1}{8}$	2 $\frac{1}{8}$	2 $\frac{1}{8}$	2 $\frac{1}{4}$	2 $\frac{5}{8}$	2 $\frac{5}{8}$	2 $\frac{5}{8}$	2 $\frac{5}{8}$	yds.
VIEW C										
45***	3	3	3	3	3 $\frac{3}{8}$	3 $\frac{3}{8}$	3 $\frac{3}{8}$	3 $\frac{3}{8}$	3 $\frac{3}{8}$	yds.
60***	2 $\frac{3}{8}$	2 $\frac{3}{8}$	2 $\frac{3}{8}$	2 $\frac{7}{8}$	2 $\frac{7}{8}$	2 $\frac{7}{8}$	2 $\frac{7}{8}$	2 $\frac{7}{8}$	2 $\frac{7}{8}$	yds.
VIEW D										
45***	3 $\frac{3}{8}$	3 $\frac{3}{8}$	3 $\frac{3}{8}$	3 $\frac{3}{8}$	4	4	4 $\frac{1}{8}$	4 $\frac{1}{8}$	4 $\frac{1}{8}$	yds.
60***	2 $\frac{5}{8}$	2 $\frac{5}{8}$	2 $\frac{5}{8}$	3	3	3 $\frac{1}{2}$	3 $\frac{1}{2}$	3 $\frac{1}{2}$	3 $\frac{1}{2}$	yds.
FUSIBLE INTERFACING A,B,C,D - 18,20 - $\frac{1}{2}$ yd.										

FINISHED GARMENT MEASUREMENTS

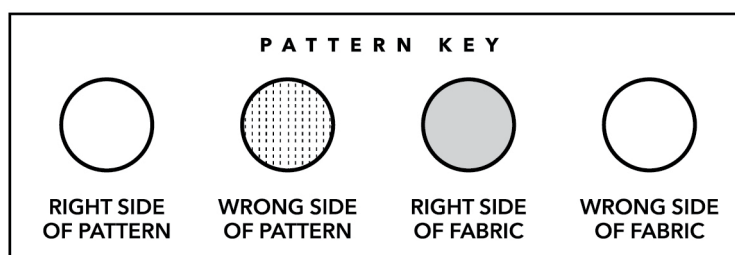
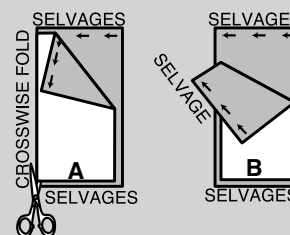
SIZES	6	8	10	12	14	16	18	20	22	
MEASUREMENT AT BUSTLINE										
A,B,C,D	35	36	37	38 $\frac{1}{2}$	40 $\frac{1}{2}$	42 $\frac{1}{2}$	44 $\frac{1}{2}$	46 $\frac{1}{2}$	48 $\frac{1}{2}$	in.
MEASUREMENT AT HIPLINE										
A,B	58	59	60	61 $\frac{1}{2}$	63 $\frac{1}{2}$	65 $\frac{1}{2}$	67 $\frac{1}{2}$	69 $\frac{1}{2}$	71 $\frac{1}{2}$	in.
C,D	70	71	72	73 $\frac{1}{2}$	75 $\frac{1}{2}$	77 $\frac{1}{2}$	79 $\frac{1}{2}$	81 $\frac{1}{2}$	83 $\frac{1}{2}$	in.
BACK LENGTH FROM BASE OF NECK										
A,B	38 $\frac{1}{2}$	38 $\frac{3}{4}$	39	39 $\frac{1}{4}$	39 $\frac{1}{2}$	39 $\frac{3}{4}$	40	40 $\frac{1}{4}$	40 $\frac{1}{2}$	in.
C,D	40 $\frac{1}{2}$	40 $\frac{3}{4}$	41	41 $\frac{1}{4}$	41 $\frac{1}{2}$	41 $\frac{3}{4}$	42	42 $\frac{1}{4}$	42 $\frac{1}{2}$	in.

BODY MEASUREMENTS

SIZES	6	8	10	12	14	16	18	20	22	
BUST	30 $\frac{1}{2}$	31 $\frac{1}{2}$	32 $\frac{1}{2}$	34	36	38	40	42	44	in.
WAIST	23	24	25	26 $\frac{1}{2}$	28	30	32	34	37	in.
HIP	32 $\frac{1}{2}$	33 $\frac{1}{2}$	34 $\frac{1}{2}$	36	38	40	42	44	46	in.
BACK WAIST LENGTH	15 $\frac{1}{2}$	15 $\frac{3}{4}$	16	16 $\frac{1}{4}$	16 $\frac{1}{2}$	16 $\frac{3}{4}$	17	17 $\frac{1}{4}$	17 $\frac{1}{2}$	in.

CUTTING AND MARKING

- > **SHRINK FABRIC** if not labeled pre-shrunk. Press.
- > **CIRCLE LAYOUT** for View, Size, Fabric Width.
- > Use **WITH NAP** layout for fabrics with one-way designs, nap, pile or surface shading. Because most knits have surface shading, a with nap layout is used.
- > For **DOUBLE THICKNESS (WITH FOLD)**, fold fabric with right sides together.
- > ***DOUBLE THICKNESS (WITHOUT FOLD)**, for fabrics with nap, fold fabric crosswise, right sides together. Mark as shown. Cut along crosswise fold of fabric (A). Turn upper layer 180° so arrows go in same direction and place over lower layer, right sides together (B).
- > For **SINGLE THICKNESS**, place fabric right side up. (For Fur Pile fabrics, place pile side down.)



- > Before **CUTTING**, place all pieces on fabric according to layout. Pin.
(Layouts show approximate position of pattern pieces; position may vary according to your pattern size.)
- > ★ Cut other pieces first, allowing enough fabric to cut this piece. Open fabric. Cut piece on single layer of fabric with piece face up on right side of fabric.
- > Cut accurately, cutting notches outward.
- > Before removing pattern, **TRANSFER MARKINGS** and lines of construction to **WRONG SIDE** of fabric, using Pin and Chalk Pencil method or Tracing Paper and Dressmaker Wheel. Markings needed on right side of fabric should be thread traced.

NOTE: Broken-line boxes (a! b! c!) in layouts represent pieces cut by measurements provided.

- > Prewash your fabric using a method that's suitable for the fabric type.
- > Fold fabric with right sides together, matching **SELVAGES**.
- > Pin your pattern pieces to the fabric as shown below and cut them out using a sharp pair of dressmaker's shears.

1

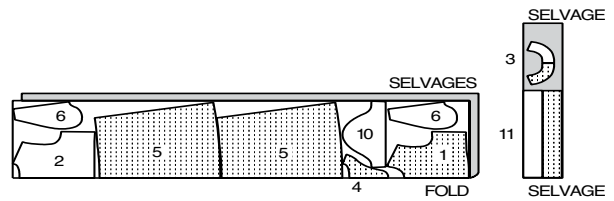
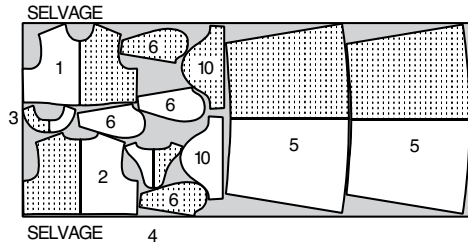
DRESS A

USE PIECES/USE PIEZAS: 1,2,3,4,5,6 & 10

45" (115 CM)

WITHOUT NAP

ALL SIZES



60" (150 CM)

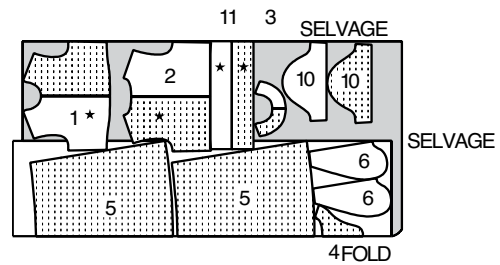
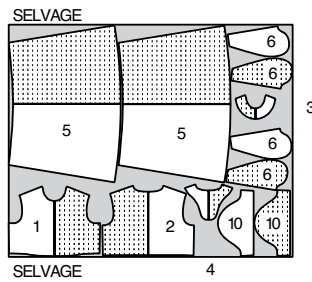
WITH OR WITHOUT NAP

SIZES 6-8-10-12-14

60" (150 CM)

WITHOUT NAP

SIZES 6-8-10-12-14-16



60" (150 CM)

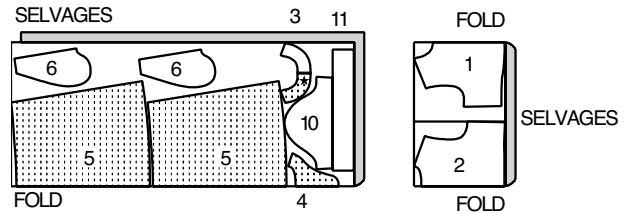
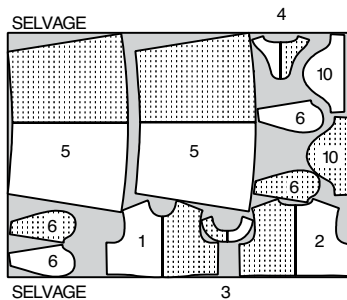
WITH OR WITHOUT NAP

SIZES 16-18-20-22

60" (150 CM)

WITHOUT NAP

SIZES 18-20-22



3

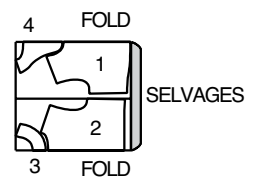
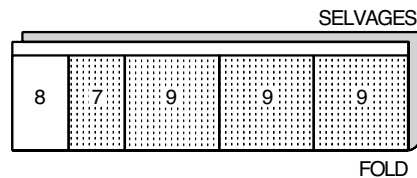
DRESS C

USE PIECES/USE PIEZAS: 1,2,3,4,7,8 & 9

45" (115 CM)

WITH OR WITHOUT NAP

SIZES 6-8-10-12



2

DRESS B

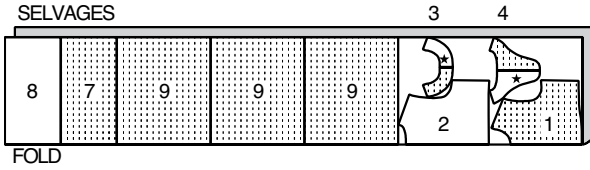
USE PIECES/USE PIEZAS: 1,2,3,4,5,6,10 & 11

45" (115 CM)

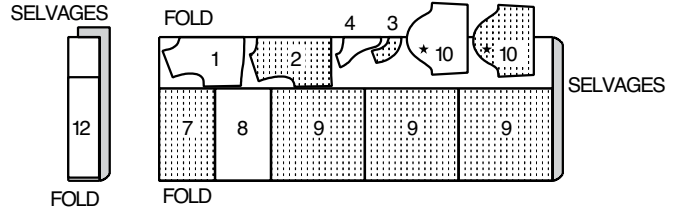
WITH OR WITHOUT NAP

ALL SIZES

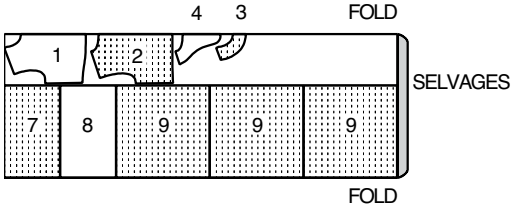
45" (115 CM)
WITH OR WITHOUT NAP
SIZES 14-16-18-20-22



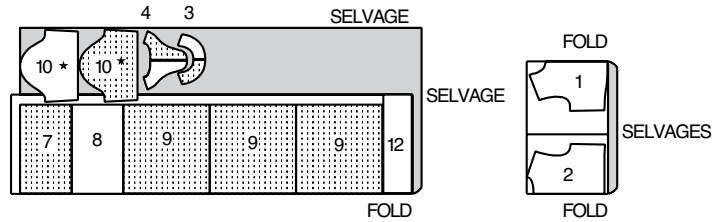
60" (150 CM)
WITH OR WITHOUT NAP
SIZES 6-8-10



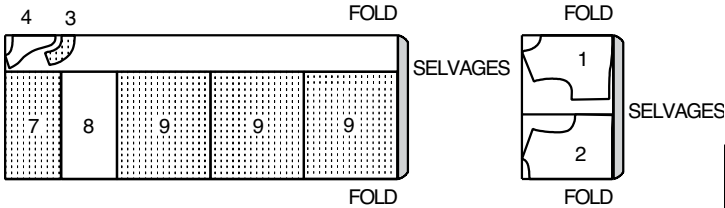
60" (150 CM)
WITH OR WITHOUT NAP
SIZES 6-8-10



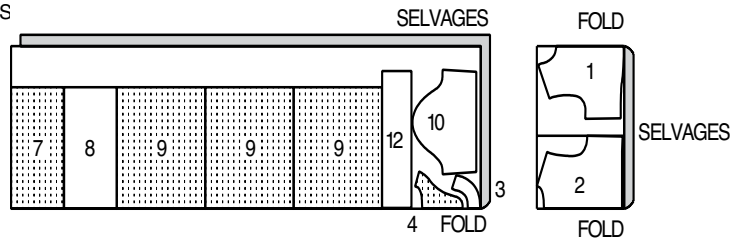
60" (150 CM)
WITH OR WITHOUT NAP
SIZES 12-14



60" (150 CM)
WITH OR WITHOUT NAP
SIZES 12-14-16-18-20-22



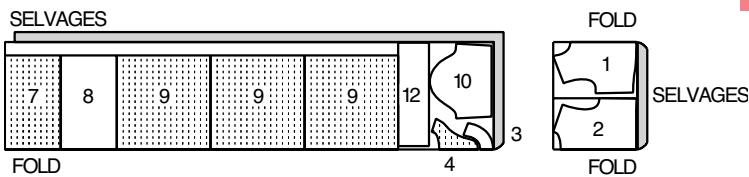
60" (150 CM)
WITH OR WITHOUT NAP
SIZES 16-18-20-22



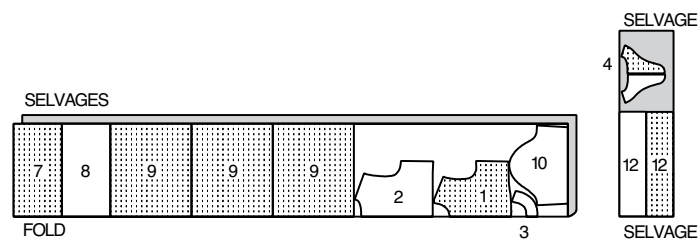
4 DRESS D

USE PIECES/USE PIEZAS: 1,2,3,4,7,8,9,10 & 12

45" (115 CM)
WITH OR WITHOUT NAP
SIZES 6-8-10-12



45" (115 CM)
WITH OR WITHOUT NAP
SIZES 14-16-18-20-22



5 FUSIBLE INTERFACING A,B,C,D

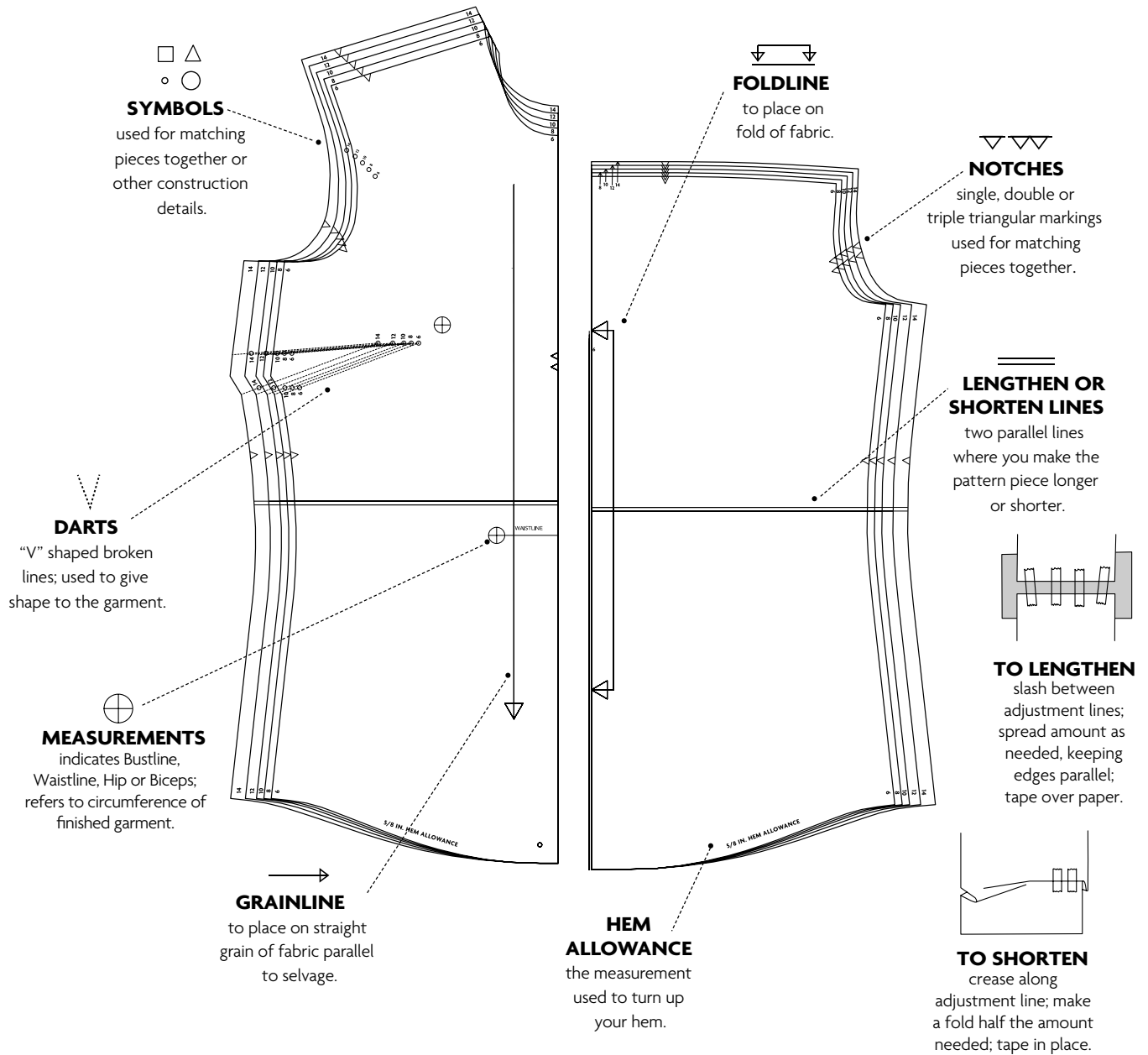
USE PIECES/USE PIEZAS: 3 & 4

18",20" (46,51 CM)

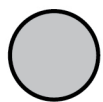
WITHOUT NAP

ALL SIZES

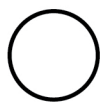




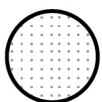
FABRIC KEY



RIGHT SIDE
FABRIC



WRONG SIDE
FABRIC



INTERFACING



RIGHT
SIDE LINING

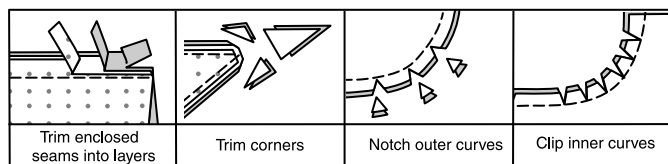


WRONG
SIDE LINING

PATTERN PIECES WILL BE
IDENTIFIED BY NUMBERS THE
FIRST TIME THEY ARE USED.

SEAM ALLOWANCES:

- > Use 5/8" (1.5 cm) seam allowances unless otherwise indicated.
- > Pin or baste seams, right side together, matching notches. Fit garment before stitching major seams.
- > Press seam allowances flat; then open unless otherwise stated. Clip where necessary so they lie flat.



The following terms appear in **BOLD TYPE** throughout your sewing instructions!

> EASESTITCH

Stitch along seamline, using long machine stitches. Pull thread ends when adjusting to fit.

NOTE: For sleeve caps, make a second row of long machine stitches 1/4" (6mm) away in seam allowance. for more control.

> FINISH

Stitch 1/4" (6mm) from raw edge and finish with one of the following: (1) Pink OR (2) Overcast OR (3) Turn in along stitching and stitch close to fold OR (4) Overlock.

OPTIONAL FOR HEMS: Apply Seam Binding.

> GATHER

Stitch along seamline and again 1/4" (6mm) away in seam allowance, using long machine stitches. Pull thread ends when adjusting to fit.

> NARROW HEM

Turn in hem; press, easing in fullness if necessary. Open out hem. Turn in again so raw edge is along crease; press. Turn in along crease; stitch.

> SLIPSTITCH

Slide needle through a folded edge, then pick up a thread of underneath fabric.

> TOPSTITCH

On outside, stitch 1/4" (6mm) from edge, seam or previous stitching, using presser foot as guide, or stitch where indicated in instructions.

> UNDERSTITCH

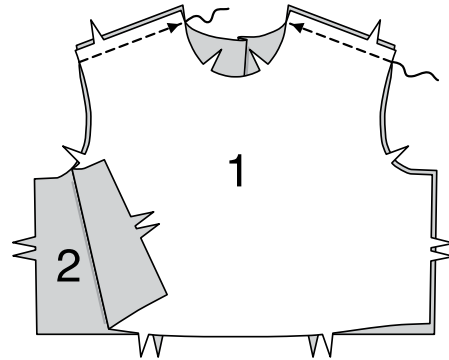
Open out facing or underside of garment; stitch to seam allowance close to seam.

DRESS A, B, C, D

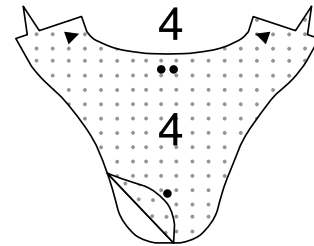
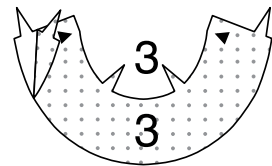
NOTE: Under each sub-heading, the first View will be illustrated unless otherwise indicated.

BODICE

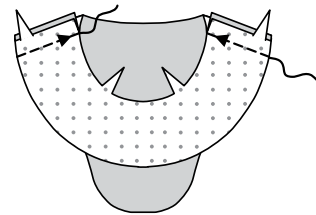
- 1** Stitch BODICE FRONT (1) and BODICE BACK (2) together at shoulders.



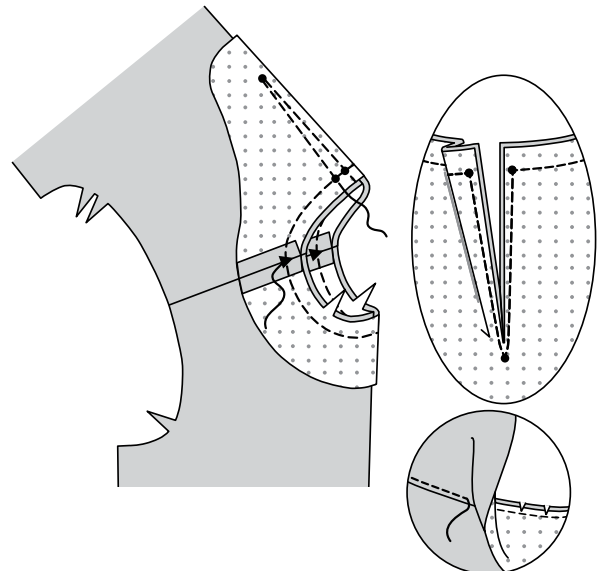
- 2** Fuse INTERFACING to wrong side of FRONT NECK FACING (3) and BACK NECK FACING (4), following manufacturer's instructions.



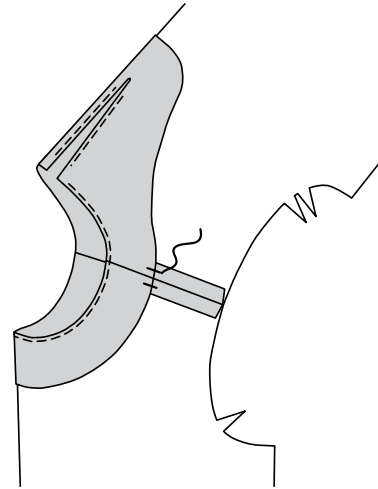
- 3** Stitch front neck facing and back facing sections together at shoulders. **FINISH** unnotched edge of facing.



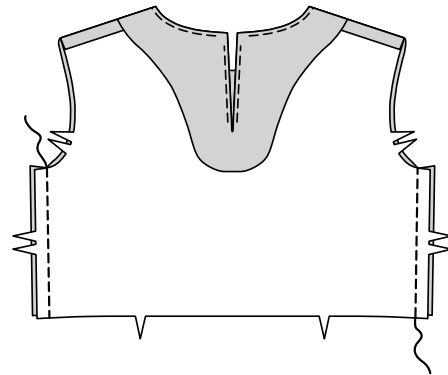
- 4** Pin facing to neck edge, matching stitching lines. Stitch along seamlines and stitching lines. Slash between stitching lines to lower small circle. Trim neck seam. **UNDERSTITCH** facing as far as possible.



- 5** Turn facing to inside. Press. Tack at seams.



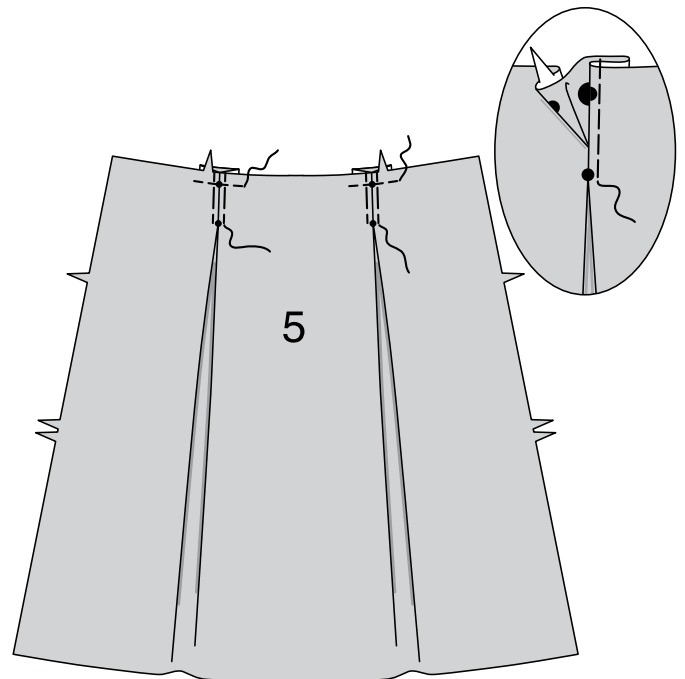
- 6** Stitch bodice front and bodice back together at sides.



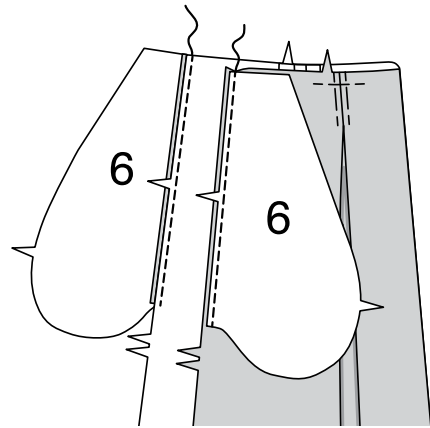
SKIRT

Views A,B:

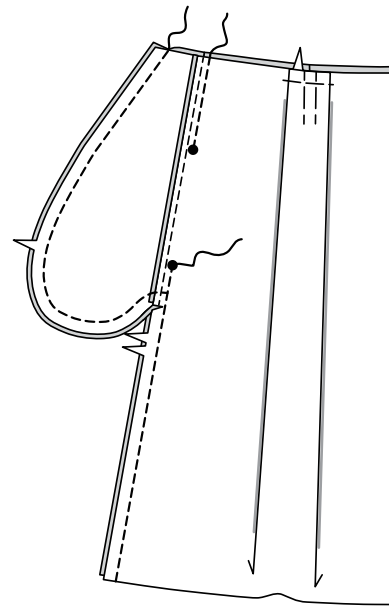
- 7** To make pleats in SKIRT FRONT AND BACK (5) on outside, crease along lines of small circles. Bring creases to lines of large circles; baste. Baste across upper edge. Press.



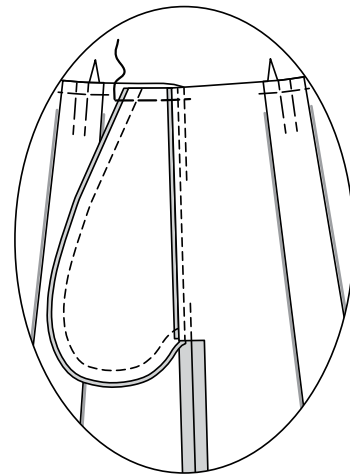
- 8** Stitch one POCKET (6) section to skirt front and skirt back at each side in a $\frac{1}{4}$ " (6mm) seam. Press seams toward pockets.



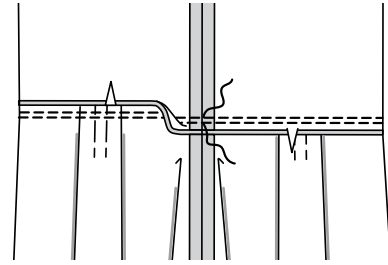
- 9** Stitch skirt front and back together at sides, leaving opening between large circles. Stitch pocket edges together to side seams. Clip back seam allowances below pockets.



- 10** Turn pockets toward front along seamlines; press. Baste upper edges.

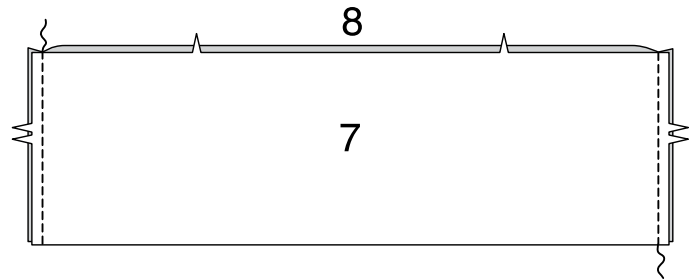


- 11** Pin skirt to bodice, matching centers. Baste. Stitch. Stitch again $\frac{1}{4}$ " (6mm) away in seam allowance. Trim close to stitching. Press seam toward bodice.

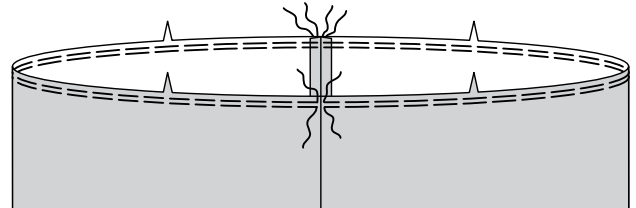


Views C,D:

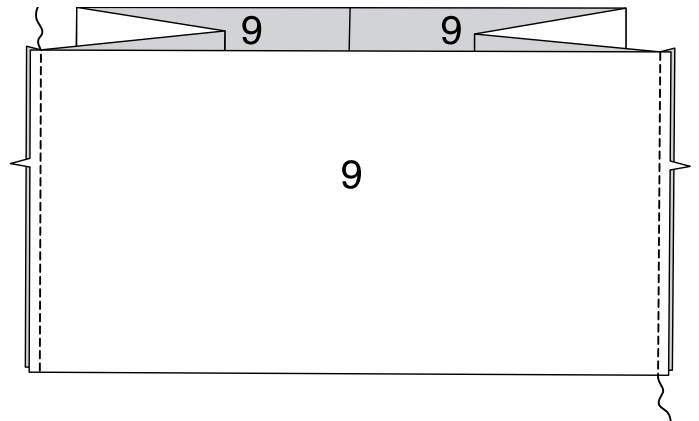
- 12** Stitch SKIRT FRONT (7) and SKIRT BACK (8) together at sides.



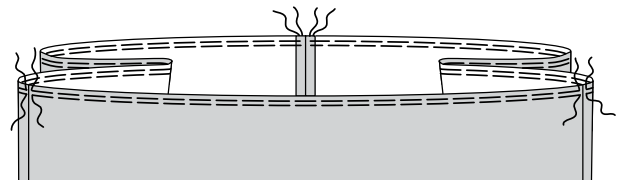
- 13** **GATHER** upper edge of skirt between seams.



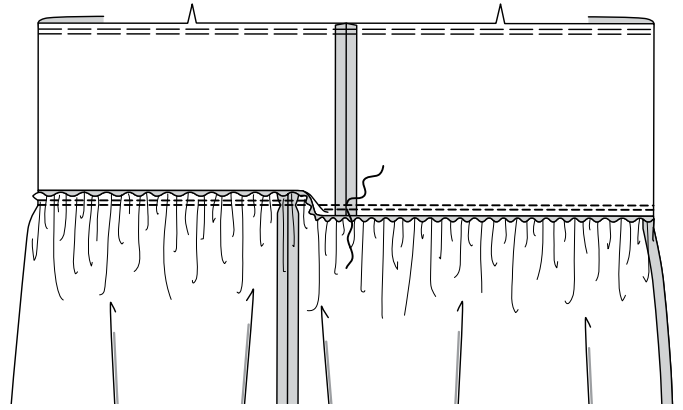
- 14** Stitch FRONT AND BACK RUFFLE (9) sections together at ends.



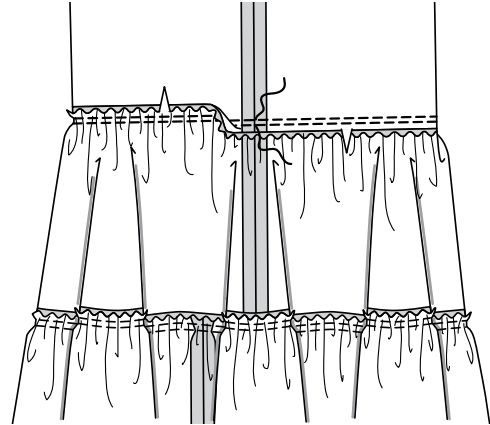
- 15** **GATHER** upper edge of ruffle between seams.



- 16** Pin ruffle to lower edge of skirt, placing one seam at center back and remaining seams at large circles on front. Adjust gathers; baste. Stitch. Stitch again $\frac{1}{4}$ " (6mm) away in seam allowance. Trim close to stitching. Press seam toward skirt.

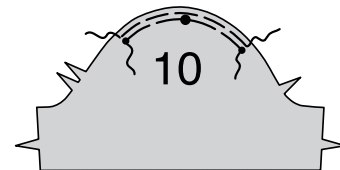


- 17** Pin skirt to bodice, matching centers. Adjust gathers; baste. Stitch. Stitch again $\frac{1}{4}$ " (6mm) away in seam allowance. Trim close to stitching. Press seam toward bodice.

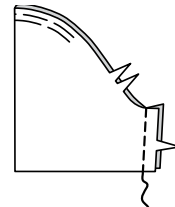


SLEEVE A,B,D

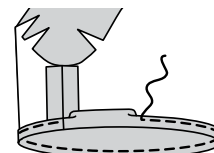
- 18** **EASESTITCH** upper edge of SLEEVE (10) between small circles.



- 19** Stitch sleeve seam.

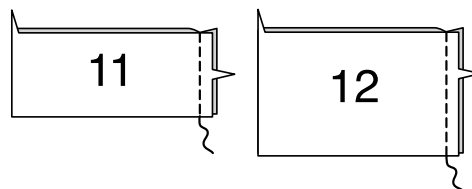


- 20** View A: Make $5/8$ " (1.5cm) **NARROW HEM** at lower edge of sleeve.

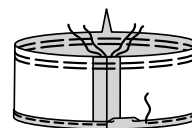


Views B, D:

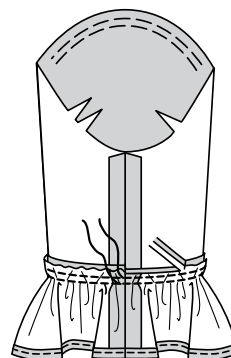
- 21** Stitch seam on SLEEVE RUFFLE (11) or SLEEVE RUFFLE (12).



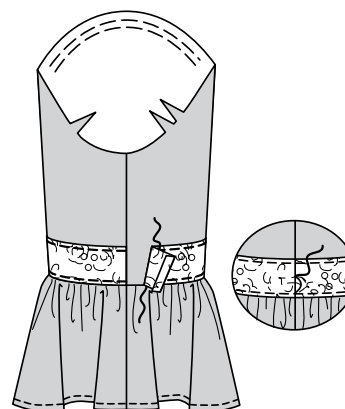
- 22** **GATHER** upper edge of sleeve ruffle. Make 5/8" (1.5cm) **NARROW HEM** at lower edge of sleeve ruffle.



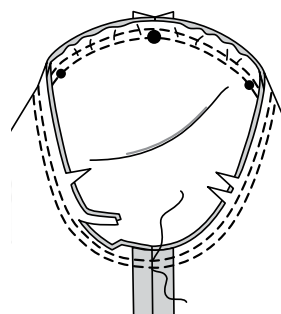
- 23** With right sides together, pin sleeve ruffle to lower edge of sleeve. Adjust gathers; baste. Stitch. Stitch again 1/4" (6mm) away in seam allowance. Trim close to stitching. Press seam toward sleeve.



- 24** View D: Pin trim to sleeve, placing lower edge along seam, as shown. Stitch close to both long edges. **SLIPSTITCH** ends of trim together, turning under ends at seam.

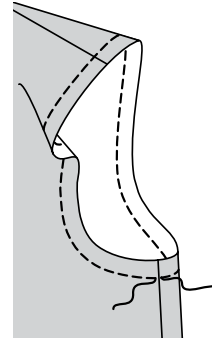


- 25** Views A, B, D: With right sides together, pin sleeve into armhole, placing large circle at shoulder seam. Adjust ease; baste. Stitch. Stitch again 1/4" (6mm) away in seam allowance. Trim close to stitching. Press seam allowances flat. Turn seam toward sleeve.

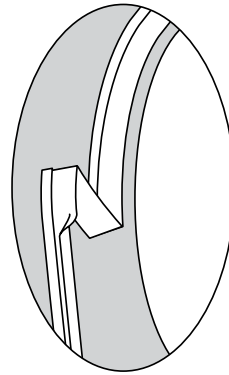


ARMHOLE FINISH C

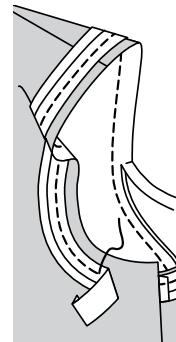
26 STAYSTITCH armhole edge.



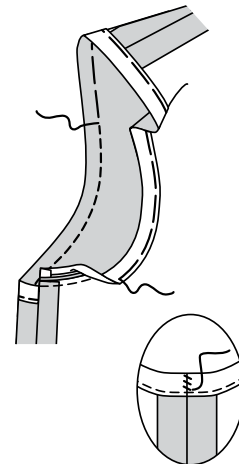
27 Open out one folded edge of bias tape; press lightly.



28 Pin bias tape to armhole edge, placing crease along seamline, as shown. Stitch along crease. Trim top seam allowance even with bias tape.

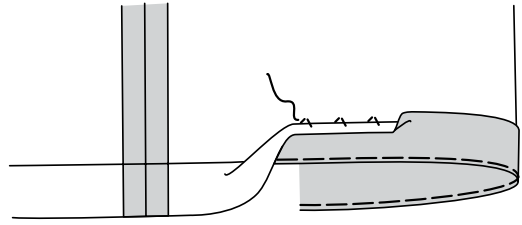


29 Turn bias tape to inside along seam. Press. Baste in place. On outside, stitch close to basted edge.



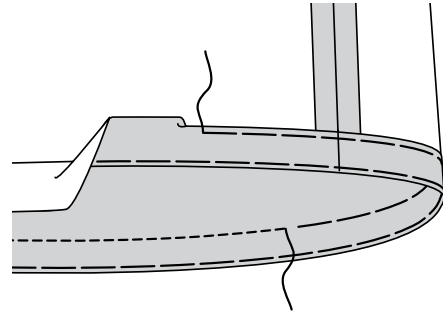
FINISHING

- 30** Views A, B: Turn up 1-¼" (3.2cm) hem. Baste close to fold. **FINISH** raw edge. Sew hem in place. Press.

*Views C, D:*

- 31** Turn up hem. Baste close to fold. Turn in ¼" (6mm) on raw edge. Baste hem in place close to upper edge. Press.

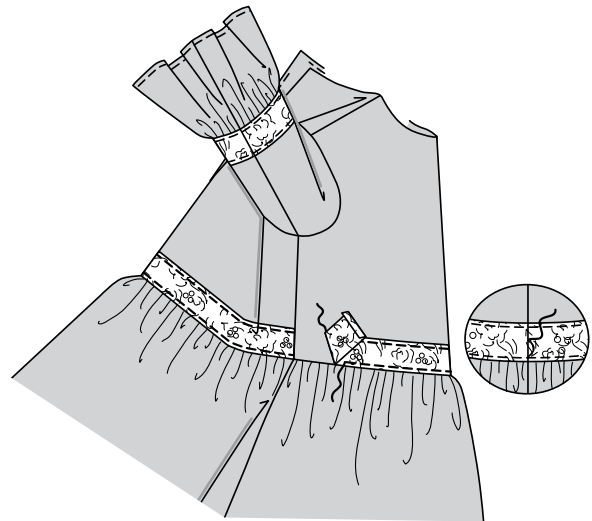
TOPSTITCH along upper basting, as shown.

*View D:*

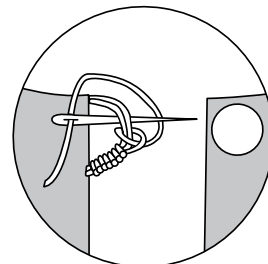
- 32** Pin trim to lower edge of bodice, placing edge along seam, as shown, turning in ¼" (6mm) on ends to meet at one side seam. Baste. Stitch close to both long edges.

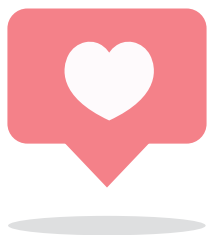
SLIPSTITCH ends of trim together.

Apply trim to lower edge of skirt in same manner as bodice.



- 33** All Views: Sew button to right back opening, as shown. Make thread eye at left back opening edge opposite button.





Congrats!


You've completed your sewing adventure!

SHARE YOUR look!



Post your pattern and tag us at
@McCALLPATTERNCOMPANY and use #MCCALLSPATTERNS
for a chance to be featured on our social media!

Look for more McCall's PDF patterns at **McCALLPATTERN.COM**

 1-800-255-2762

Copyright © 2019 CSS Industries, Inc. All Rights Reserved.
Sold for individual home use only and not for commercial or manufacturing purposes.