



PDF PATTERNS

M7925

>> MISSES'
DRESSES

02

PIECES AND
NOTIONS

03

CHARTS

04

CUTTING
LAYOUTS

10

PATTERN
MARKINGS

11

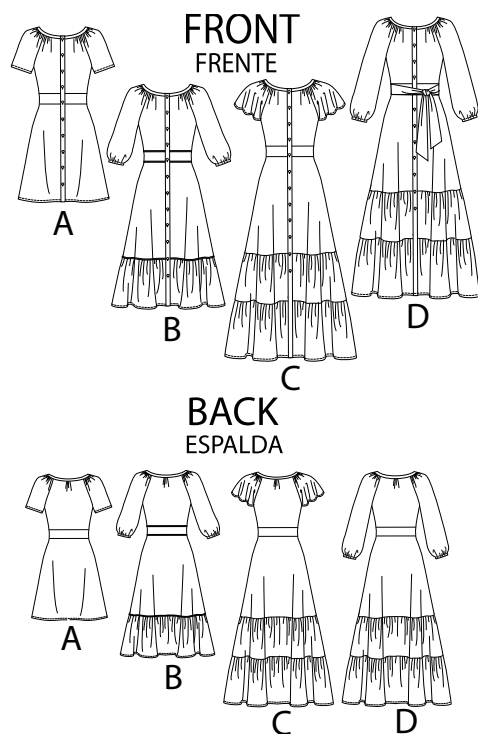
SEWING
INSTRUCTIONS



McCALL'S®

SKILL LEVEL: EASY

Find the Perfect Fit!

**THINGS YOU NEED:**

- > A,B,C,D: 5/8" Buttons: Eight for View A; Eleven for B,C,D.
- > B: 3/4 yd. of 3/8" Elastic, 5 yds. of 1/8" Piping.
- > D: 3/4 yd. of 3/8" Elastic.

SUGGESTED FABRICS:

- > Cotton Blends, Eyelet, Linen, Crepes.

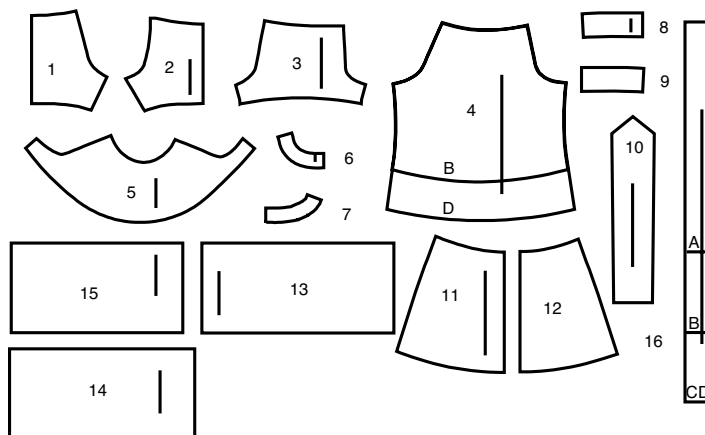
Your printed tile pieces should be assembled before you move on to this step!

PIECES (16)**DRESS A, B, C, D**

- 1 BODICE BACK
- 2 BODICE FRONT
- 3 SLEEVE A
- 4 SLEEVE B,D
- 5 SLEEVE C
- 6 FRONT NECK BAND
- 7 BACK NECK BAND
- 8 MIDRIFF FRONT
- 9 MIDRIFF BACK
- 10 TIE END D
- 11 SKIRT FRONT
- 12 SKIRT BACK
- 13 BACK RUFFLE B,C,D

14 FRONT RUFFLE B,C,D**15 LOWER RUFFLE C,D****16 FRONT BAND**

16 PATTERN PIECES
16 PIEZAS DE PATRON



CHARTS

YARDAGE CHARTS

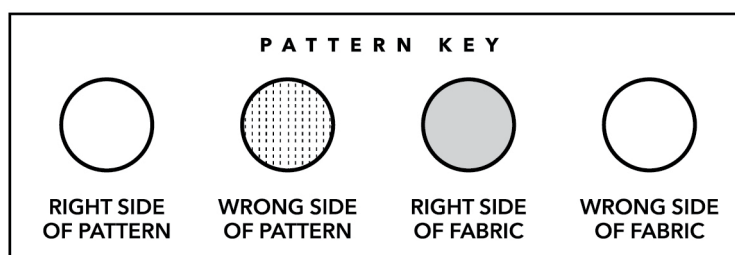
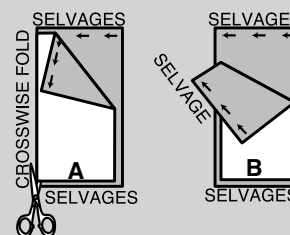
SIZES	6	8	10	12	14	16	18	20	22	
VIEW A										
45***	2	2	2	2	2 $\frac{1}{8}$	2 $\frac{1}{8}$	2 $\frac{3}{8}$	2 $\frac{1}{2}$	2 $\frac{5}{8}$	yds.
60***	1 $\frac{3}{8}$	1 $\frac{3}{8}$	1 $\frac{3}{8}$	1 $\frac{5}{8}$	1 $\frac{5}{8}$	1 $\frac{5}{8}$	1 $\frac{3}{4}$	1 $\frac{3}{4}$	1 $\frac{3}{4}$	yds.
VIEW B										
45***	3 $\frac{5}{8}$	3 $\frac{5}{8}$	3 $\frac{5}{8}$	3 $\frac{5}{8}$	3 $\frac{3}{4}$	3 $\frac{7}{8}$	4 $\frac{1}{2}$	4 $\frac{1}{2}$	4 $\frac{1}{2}$	yds.
60***	2 $\frac{3}{8}$	2 $\frac{3}{8}$	2 $\frac{3}{8}$	2 $\frac{7}{8}$	2 $\frac{7}{8}$	2 $\frac{7}{8}$	3	3	3	yds.
VIEW C										
45***	5	5 $\frac{1}{8}$	5 $\frac{1}{8}$	5 $\frac{1}{8}$	5 $\frac{1}{4}$	5 $\frac{1}{2}$	5 $\frac{7}{8}$	5 $\frac{7}{8}$	5 $\frac{7}{8}$	yds.
60***	3 $\frac{1}{4}$	3 $\frac{1}{4}$	3 $\frac{1}{4}$	3 $\frac{3}{4}$	3 $\frac{7}{8}$	4	4	4 $\frac{1}{8}$	4 $\frac{1}{4}$	yds.
VIEW D										
45***	6	6	6	6 $\frac{1}{8}$	6 $\frac{1}{8}$	6 $\frac{1}{4}$	6 $\frac{3}{4}$	6 $\frac{3}{4}$	6 $\frac{3}{4}$	yds.
60***	3 $\frac{5}{8}$	3 $\frac{5}{8}$	3 $\frac{5}{8}$	4 $\frac{1}{2}$	4 $\frac{1}{2}$	4 $\frac{1}{2}$	4 $\frac{1}{2}$	4 $\frac{1}{2}$	4 $\frac{1}{2}$	yds.
FUSIBLE INTERFACING A,B,C,D										
18,20	1	1	1	1	1	1 $\frac{1}{8}$	1 $\frac{1}{4}$	1 $\frac{1}{4}$	1 $\frac{1}{4}$	yds.

BODY MEASUREMENTS

SIZES	6	8	10	12	14	16	18	20	22	
BUST	30 $\frac{1}{2}$	31 $\frac{1}{2}$	32 $\frac{1}{2}$	34	36	38	40	42	44	in.
WAIST	23	24	25	26 $\frac{1}{2}$	28	30	32	34	37	in.
HIP	32 $\frac{1}{2}$	33 $\frac{1}{2}$	34 $\frac{1}{2}$	36	38	40	42	44	46	in.
BACK WAIST LENGTH	15 $\frac{1}{2}$	15 $\frac{3}{4}$	16	16 $\frac{1}{4}$	16 $\frac{1}{2}$	16 $\frac{3}{4}$	17	17 $\frac{1}{4}$	17 $\frac{1}{2}$	in.

CUTTING AND MARKING

- > **SHRINK FABRIC** if not labeled pre-shrunk. Press.
- > **CIRCLE LAYOUT** for View, Size, Fabric Width.
- > Use **WITH NAP** layout for fabrics with one-way designs, nap, pile or surface shading. Because most knits have surface shading, a with nap layout is used.
- > For **DOUBLE THICKNESS (WITH FOLD)**, fold fabric with right sides together.
- > ***DOUBLE THICKNESS (WITHOUT FOLD)**, for fabrics with nap, fold fabric crosswise, right sides together. Mark as shown. Cut along crosswise fold of fabric (A). Turn upper layer 180° so arrows go in same direction and place over lower layer, right sides together (B).
- > For **SINGLE THICKNESS**, place fabric right side up. (For Fur Pile fabrics, place pile side down.)



- > Before **CUTTING**, place all pieces on fabric according to layout. Pin.
(Layouts show approximate position of pattern pieces; position may vary according to your pattern size.)
- > ★ Cut other pieces first, allowing enough fabric to cut this piece. Open fabric. Cut piece on single layer of fabric with piece face up on right side of fabric.
- > Cut accurately, cutting notches outward.
- > Before removing pattern, **TRANSFER MARKINGS** and lines of construction to **WRONG SIDE** of fabric, using Pin and Chalk Pencil method or Tracing Paper and Dressmaker Wheel. Markings needed on right side of fabric should be thread traced.

NOTE: Broken-line boxes (a! b! c!) in layouts represent pieces cut by measurements provided.

- > Prewash your fabric using a method that's suitable for the fabric type.
- > Fold fabric with right sides together, matching **SELVAGES**.
- > Pin your pattern pieces to the fabric as shown below and cut them out using a sharp pair of dressmaker's shears.

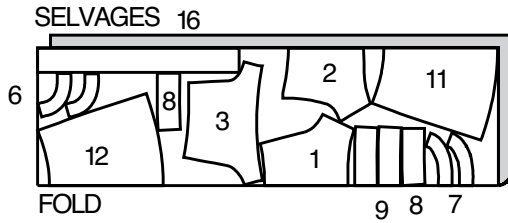
1 DRESS A

USE PIECES/USE PIEZAS: 1,2,3,6,7,8,9,11,12 & 16

45" (115 CM)

WITH OR WITHOUT NAP

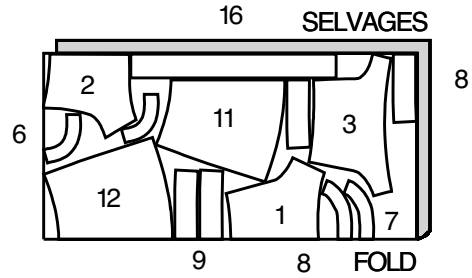
SIZES 6-8-10-12-14-16



60" (150 CM)

WITH OR WITHOUT NAP

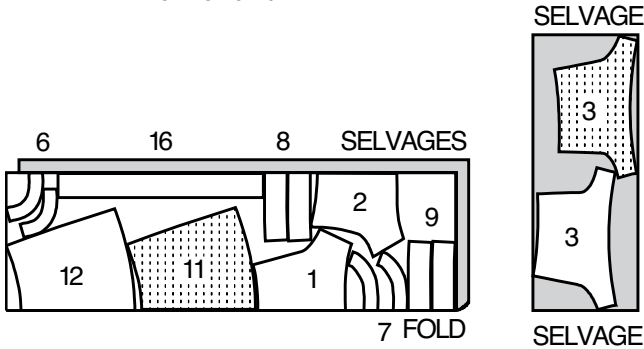
SIZES 12-14-16-18-20-22



45" (115 CM)

WITH OR WITHOUT NAP

SIZES 18-20-22



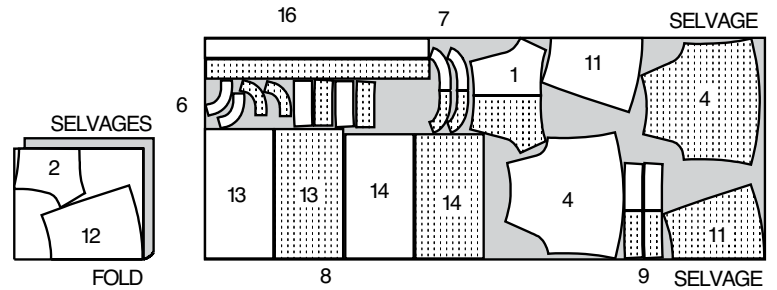
2 DRESS B

USE PIECES/USE PIEZAS: 1,2,4,6,7,8,9,11,12,13,14 & 16

45" (115 CM)

WITH OR WITHOUT NAP

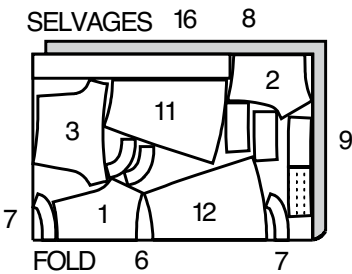
SIZES 6-8-10-12-14-16



60" (150 CM)

WITH OR WITHOUT NAP

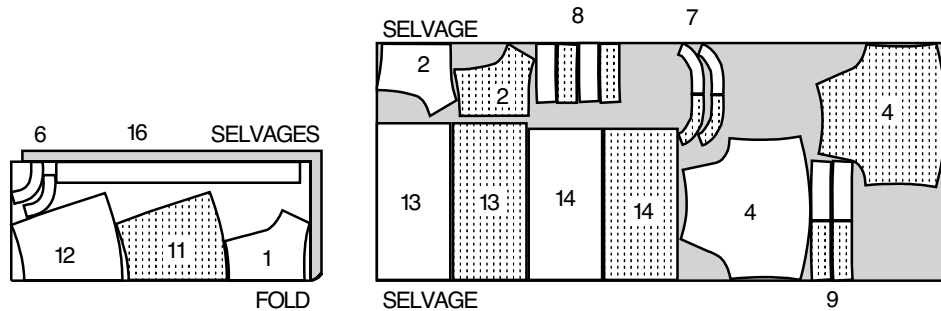
SIZES 6-8-10



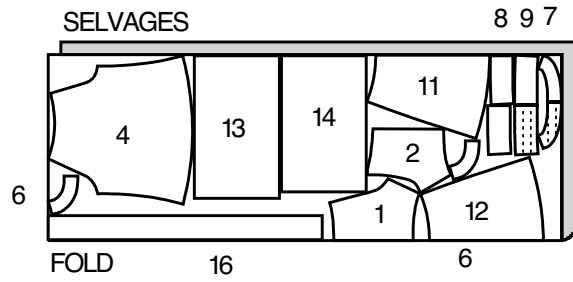
45" (115 CM)

WITH OR WITHOUT NAP

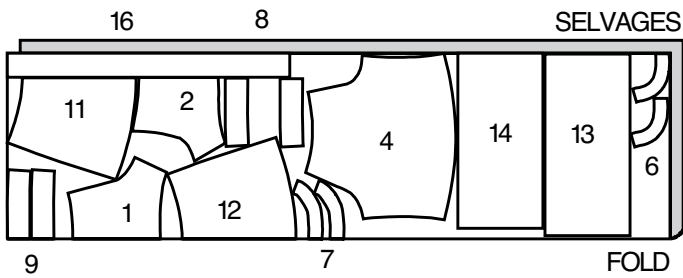
SIZES 18-20-22



60" (150 CM)
WITH OR WITHOUT NAP
SIZES 6-8-10

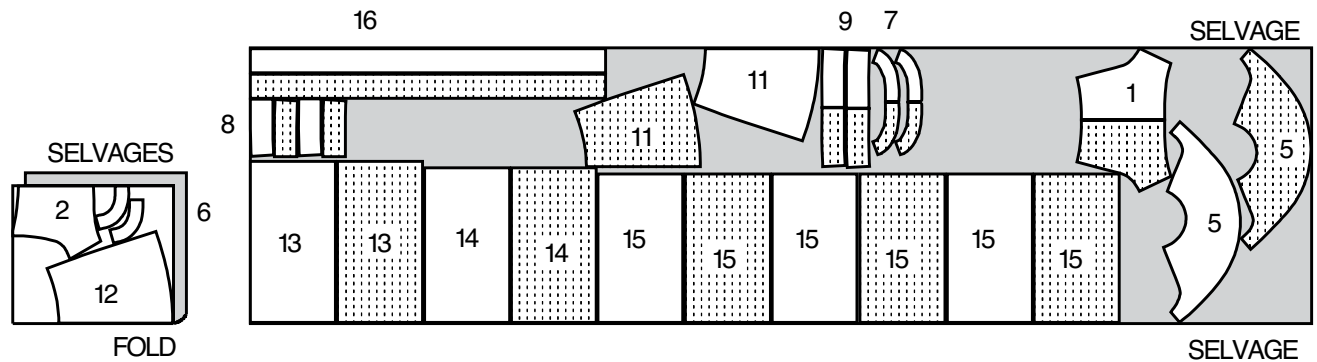


60" (150 CM)
WITH OR WITHOUT NAP
SIZES 12-14-16-18-20-22



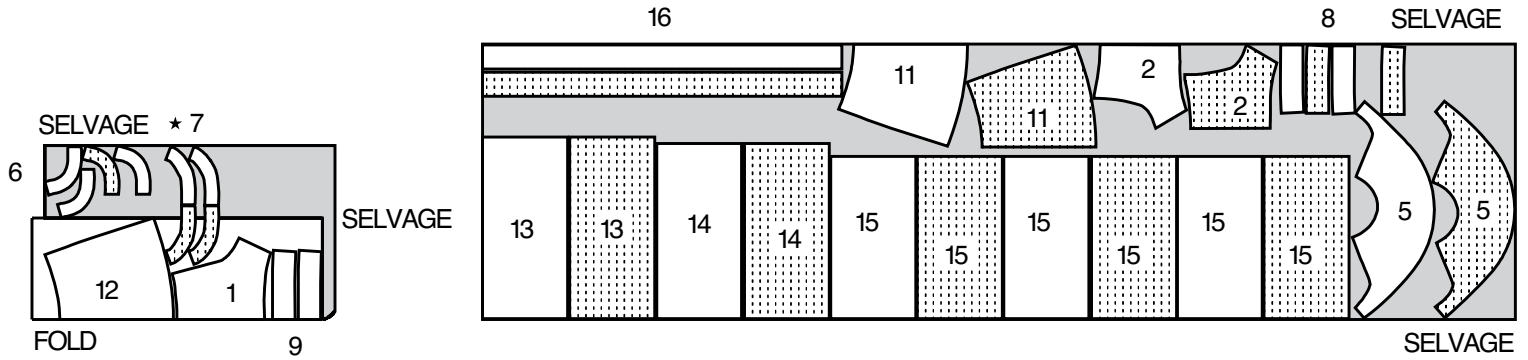
3 DRESS C

USE PIECES/USE PIEZAS: 1,2,5,6,7,8,9,11,12,13,14,15 & 16
45" (115 CM)
WITH OR WITHOUT NAP
SIZES 6-8-10-12-14-16

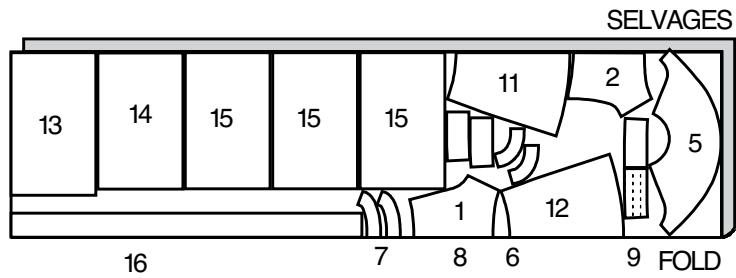


M7925 >> CUTTING LAYOUTS

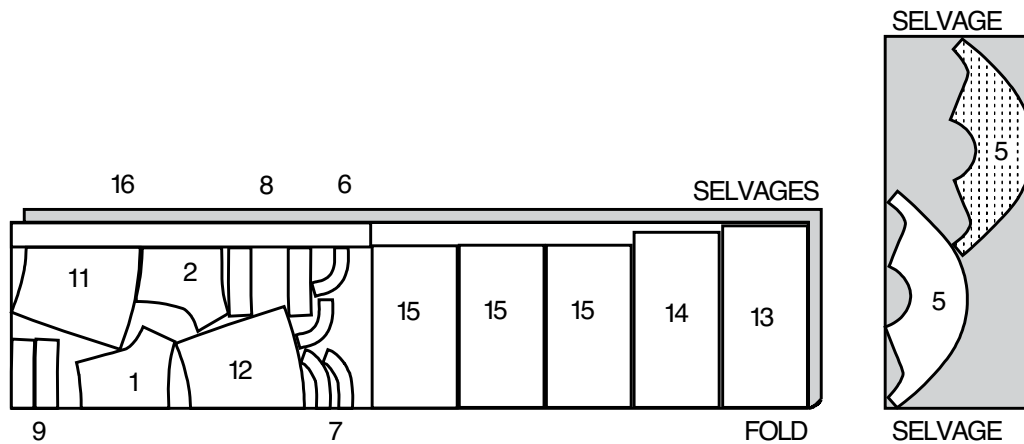
45" (115 CM)
WITH OR WITHOUT NAP
SIZES 18-20-22



60" (150 CM)
WITH OR WITHOUT NAP
SIZES 6-8-10



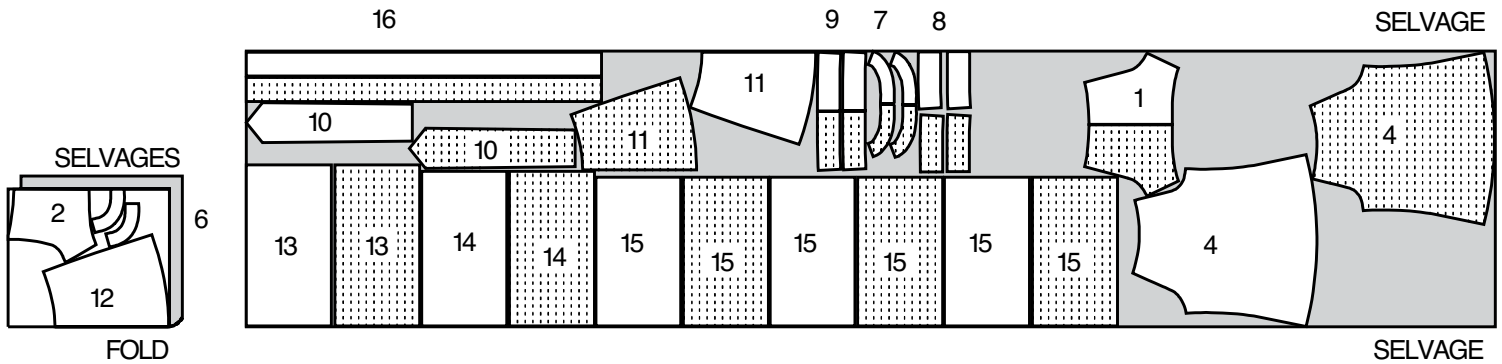
60" (150 CM)
WITH OR WITHOUT NAP
SIZES 12-14-16-18-20-22



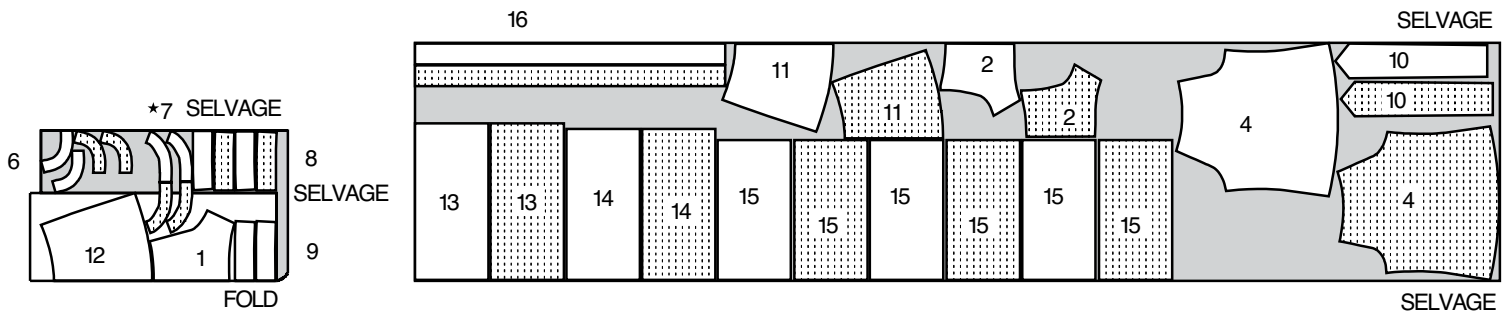
4

DRESS D

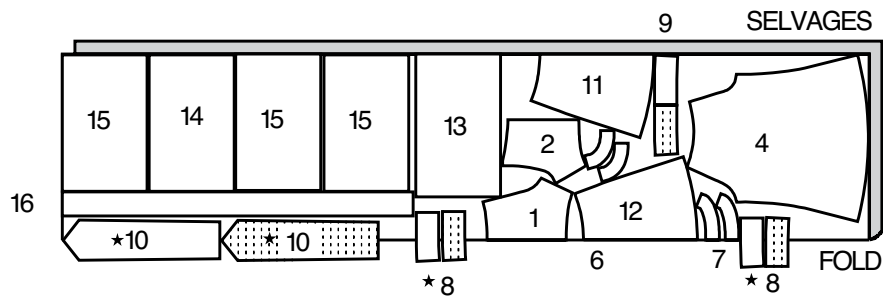
USE PIECES/USE PIEZAS: 1,2,4,6,7,8,9,10,11,12,13,14,15 & 16
 45" (115 CM)
 WITH OR WITHOUT NAP
 SIZES 6-8-10-12-14-16



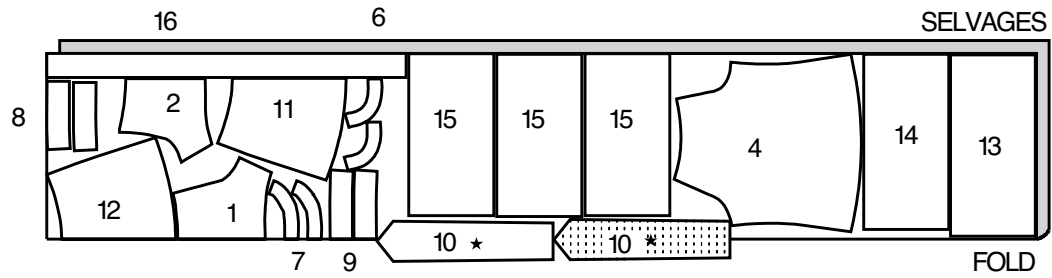
45" (115 CM)
 WITH OR WITHOUT NAP
 SIZES 18-20-22



60" (150 CM)
 WITH OR WITHOUT NAP
 SIZES 6-8-10



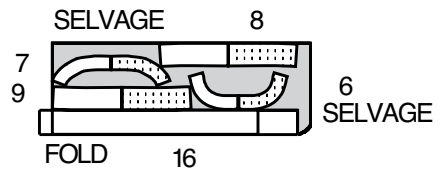
60" (150 CM)
WITH OR WITHOUT NAP
SIZES 12-14-16-18-20-22

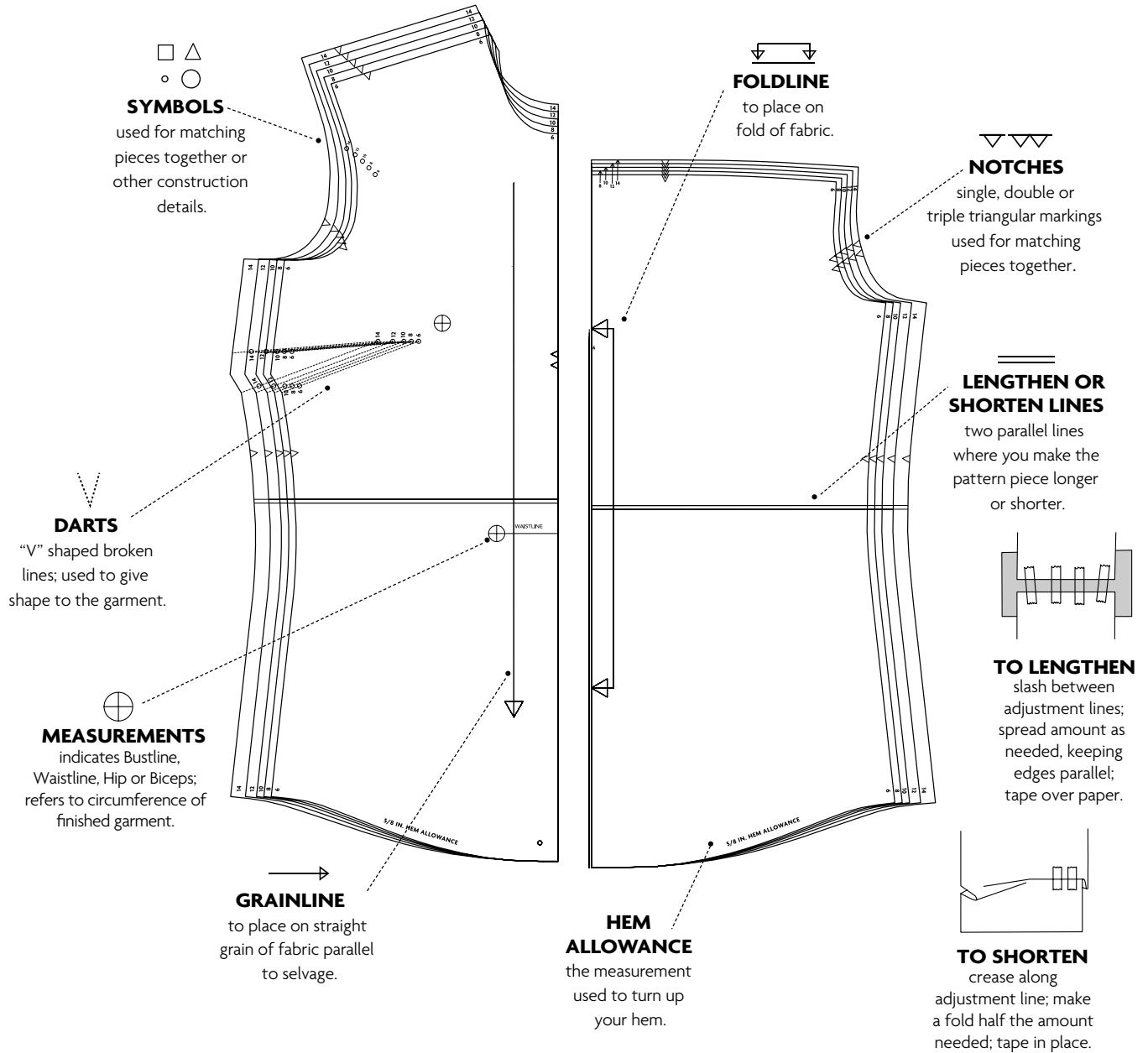


5

FUSIBLE INTERFACING A,B,C,D

USE PIECES/USE PIEZAS: 6,7,8,9 & 16
18",20" (46,51 CM)
ALL SIZES





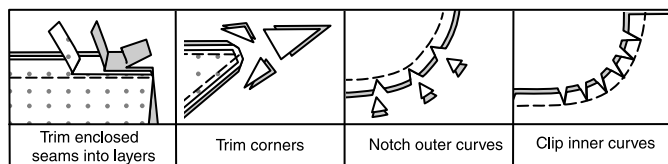
FABRIC KEY



PATTERN PIECES WILL BE IDENTIFIED BY NUMBERS THE FIRST TIME THEY ARE USED.

SEAM ALLOWANCES:

- > Use 5/8" (1.5 cm) seam allowances unless otherwise indicated.
- > Pin or baste seams, right side together, matching notches. Fit garment before stitching major seams.
- > Press seam allowances flat; then open unless otherwise stated. Clip where necessary so they lie flat.



The following terms appear in **BOLD TYPE** throughout your sewing instructions!

> FINISH

Stitch 1/4" (6mm) from raw edge and finish with one of the following: (1) Pink OR (2) Overcast OR (3) Turn in along stitching and stitch close to fold OR (4) Overlock.

OPTIONAL FOR HEMS: Apply Seam Binding.

> GATHER

Stitch along seamline and again 1/4" (6mm) away. In seam allowance, using long machine stitches. Pull thread ends when adjusting to fit.

> NARROW HEM

Turn in hem; press, easing in fullness if necessary. Open out hem. Turn in again so raw edge is along crease; press. Turn in along crease; stitch.

> SLIPSTITCH

Slide needle through a folded edge, then pick up a thread of underneath fabric.

> UNDERSTITCH

Open out facing or underside of garment; stitch to seam allowance close to seam.

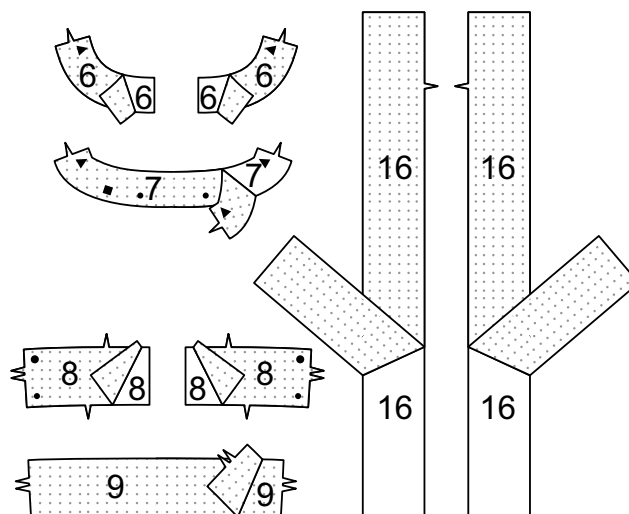
DRESS A, B, C, D

NOTE: Under each sub-heading, the first View will be illustrated, unless otherwise indicated.

INTERFACING

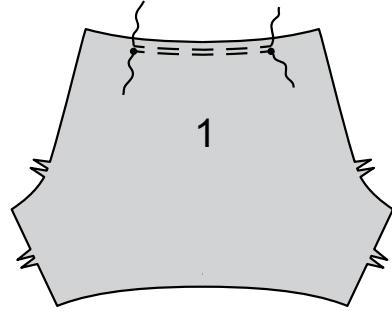
1

Pin INTERFACING to wrong side of each matching FABRIC section. Fuse, following manufacturer's instructions. NOTE: Interfacing sections will be used as facing.

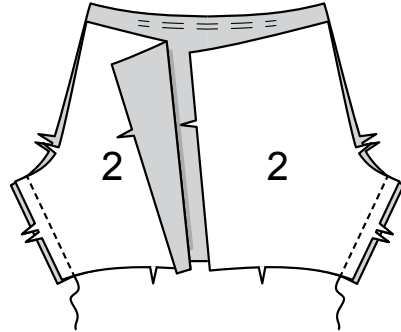


BODICE

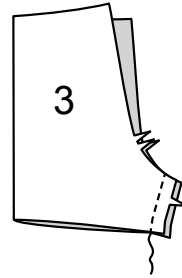
- 2** **GATHER** upper edge of BODICE BACK (1) between small circles.



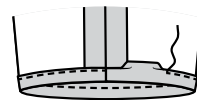
- 3** Stitch BODICE FRONT (2) to bodice back at sides.

**View A:**

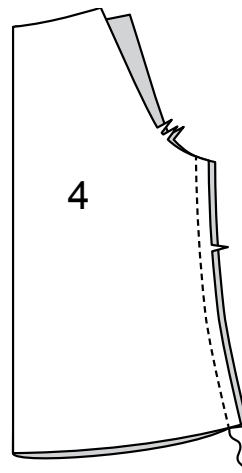
- 4** Stitch SLEEVE (3) seam.



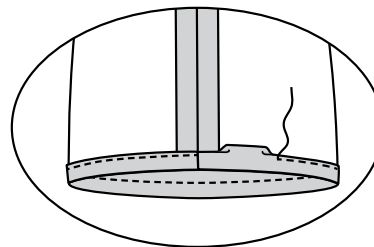
- 5** Make 5/8" (1.5cm) **NARROW HEM** at lower edge of sleeve.

**Views B, D:**

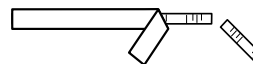
- 6** Stitch SLEEVE (4) seam.



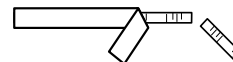
- 7** To form casing for elastic, turn lower edge of sleeve to inside along foldline, turning in $\frac{1}{4}$ " (6mm) on raw edge; press. Stitch, as shown, leaving an opening.



- 8** View B: Cut elastic approximately 10" (26cm) long.

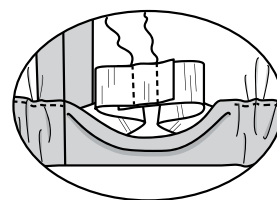


- 9** View D: Cut elastic approximately 9" (23cm) long.

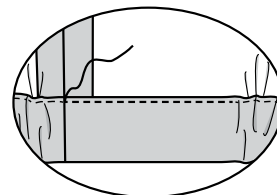


Views B, D:

- 10** Insert elastic through opening. Lap ends; hold with safety pin. Try on; adjust if necessary. Stitch ends of elastic securely.

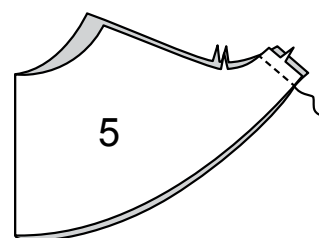


- 11** Stitch opening, stretching elastic while stitching.



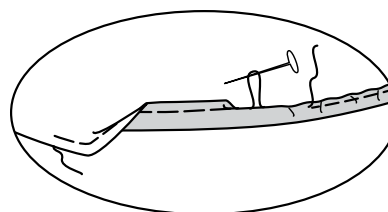
View C:

- 12** Stitch SLEEVE (5) seam.

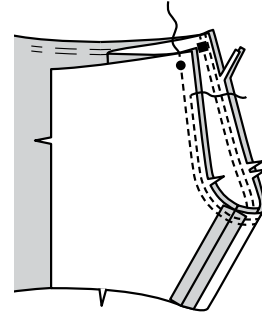


- 13** Stitch $\frac{1}{4}$ " (6mm) from lower edge of sleeve, using long machine stitches. Turn up $5/8$ " (1.5cm) hem, turning in $\frac{1}{4}$ " (6mm) on raw edge. Pull thread to ease in fullness. Stitch. Press.

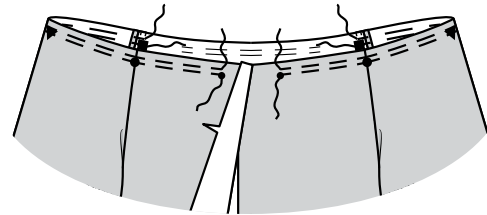
All Views:



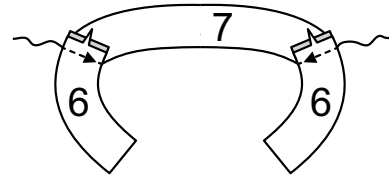
- 14** With right sides together, pin sleeve to armhole edge; baste. Stitch. Stitch again $\frac{1}{4}$ " (6mm) away in seam allowance. Trim close to stitching. Press seam allowances flat. Turn seam toward sleeve.



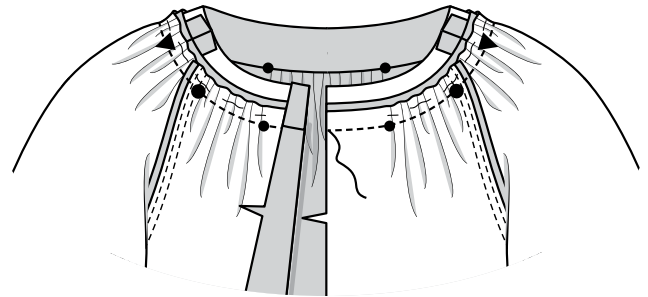
- 15** **GATHER** upper edge of bodice between small circles in front and squares, as shown.



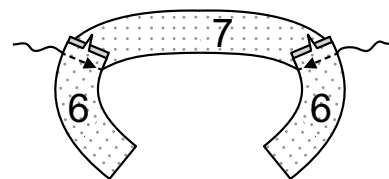
- 16** Stitch FRONT NECK BAND (6) and BACK NECK BAND (7) sections together at shoulders.



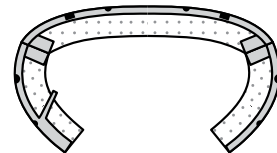
- 17** Pin neck band to bodice, matching centers and symbols, placing shoulder seams at triangles. Adjust gathers; baste. Stitch, keeping pressed edge of facing free. Trim. Press seam toward neck band.



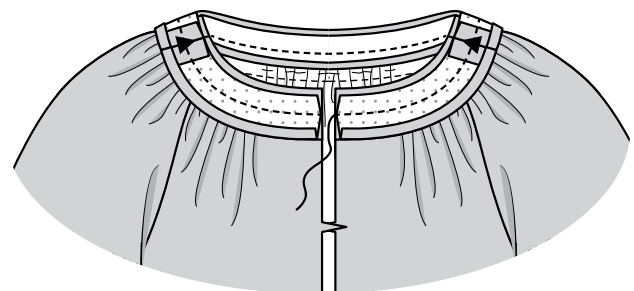
- 18** Stitch neck band FACING (6) and (7) sections together at shoulders.



- 19** Turn in seam allowance on lower edge of neck band facing. Press, easing in fullness. Trim pressed seam allowance to $\frac{3}{8}$ " (1cm).

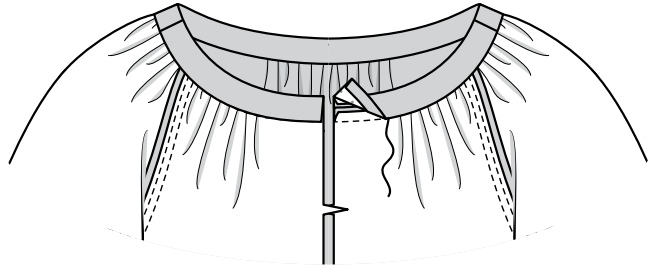


- 20** With right sides together, pin facing to neck band, matching centers. Stitch neck edge. Trim. **UNDERSTITCH** facing.



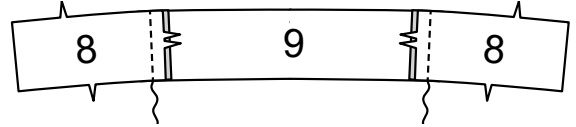
21 SLIPSTITCH pressed edge of facing over seam. Baste raw edges.

Turn facing to inside; press.



MIDRIFF

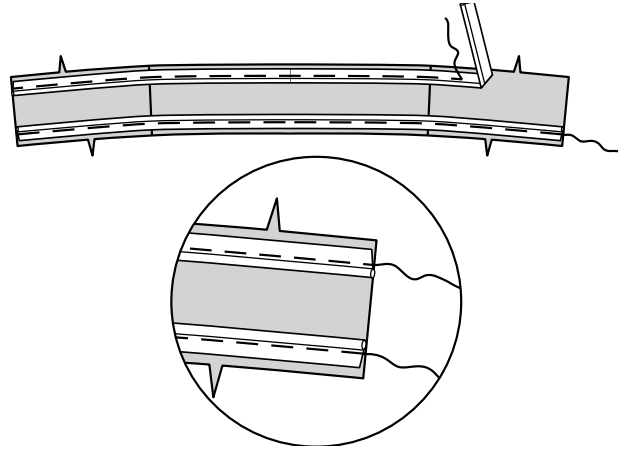
22 Views A, B, C: Stitch MIDRIFF FRONT (8) and MIDRIFF BACK (9) sections together at sides.



View B:

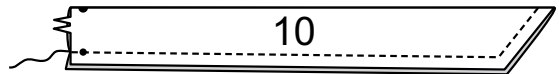
NOTE: When stitching seams with piping trim, use a zipper foot.

23 On outside, pin piping trim to upper and lower edges of midriff, placing stitching or ridge on piping just inside seamline; baste.

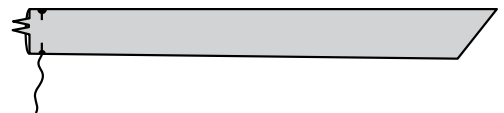


View D:

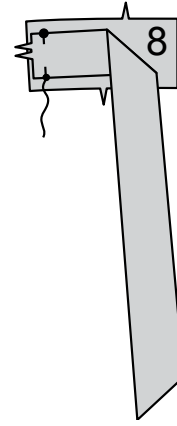
24 With right sides together, fold TIE END (10) along foldline. Stitch, leaving end with symbols open. Trim.



25 Turn. Press. Baste raw edges together.

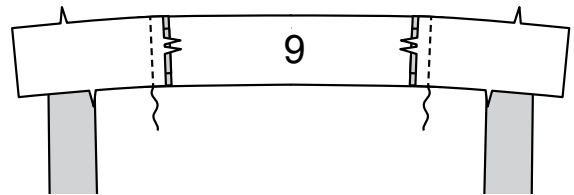


- 26** Pin one tie end to each MIDRIFF FRONT (8) section at side, matching symbols; baste.

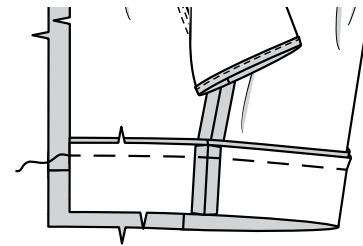


- 27** Stitch midriff front sections to MIDRIFF BACK (9) at sides.

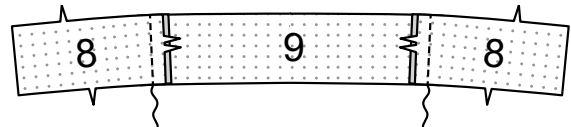
All Views:



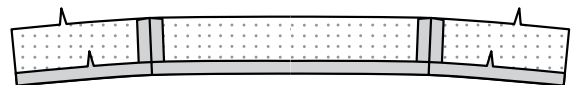
- 28** Pin midriff to lower edge of bodice, matching centers; baste.



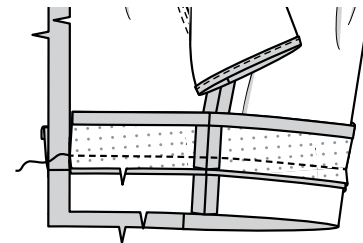
- 29** Stitch midriff front FACING (8) and midriff back FACING (9) sections together at sides.



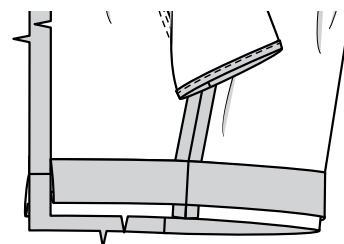
- 30** Turn in seam allowance on lower edge of facing. Press.



- 31** Pin right side of facing to wrong side of bodice, matching centers; baste. Stitch.

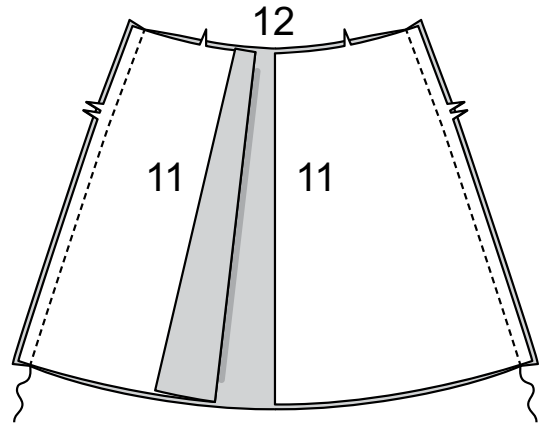


- 32** Turn midriff and facing down; press.

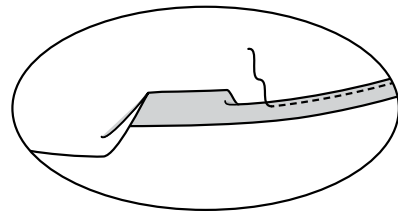


SKIRT

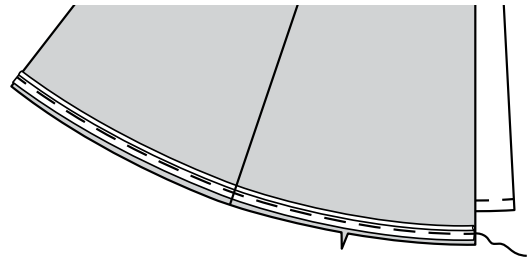
- 33** Stitch SKIRT FRONT (11) sections to SKIRT BACK (12) at sides.



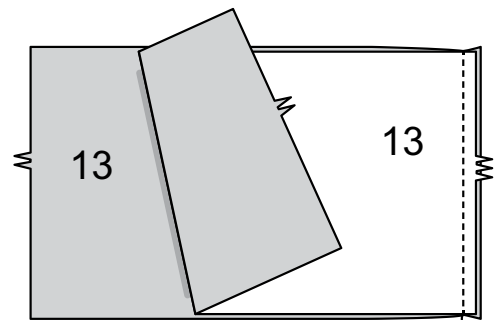
- 34** View A: Make 5/8" (1.5cm) **NARROW HEM** at lower edge of skirt.

*View B:*

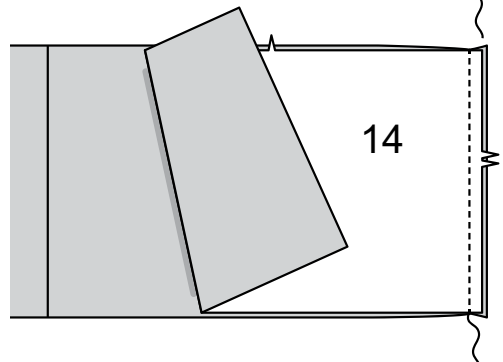
- 35** On outside, pin piping trim to lower edge of skirt, placing stitching or ridge on piping just inside seamline; baste.



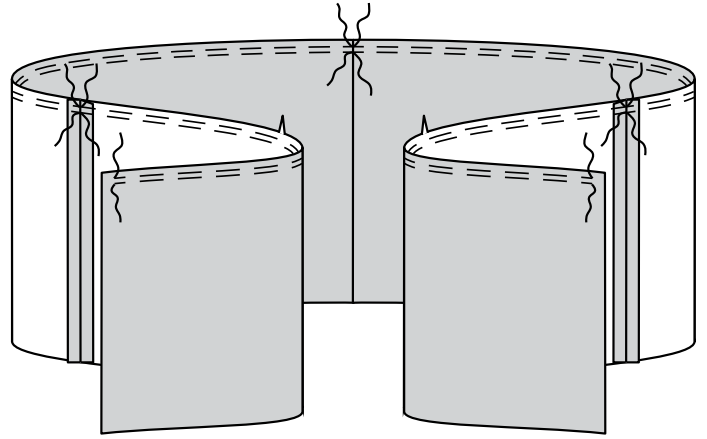
- 36** Stitch BACK RUFFLE (13) sections together at center back.



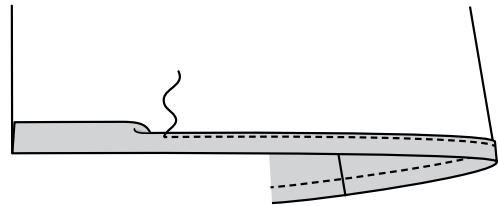
- 37** Stitch FRONT RUFFLE (14) sections to back ruffle at sides.



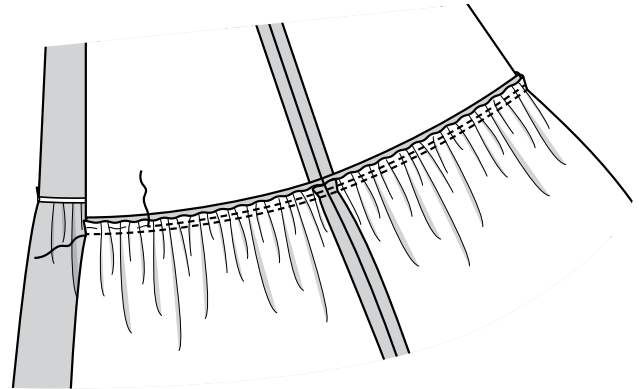
- 38** **GATHER** upper edge of ruffle between seamlines, as shown.



- 39** Make 5/8" (1.5cm) **NARROW HEM** at lower edge of ruffle.

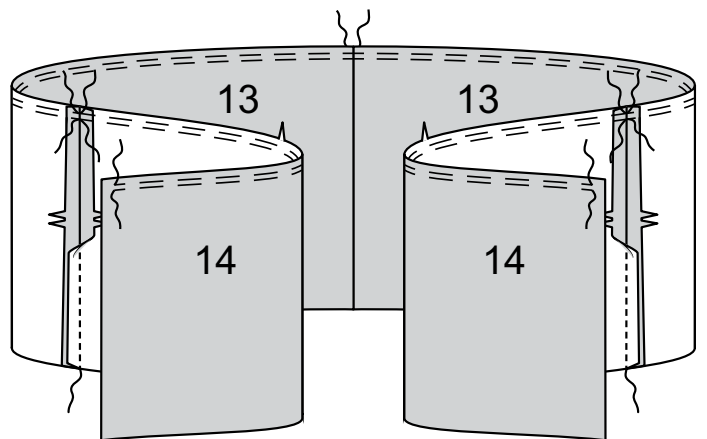


- 40** Pin ruffle to lower edge of skirt, matching centers. Adjust gathers; baste. Stitch. Stitch again 1/4" (6mm) away in seam allowance. Trim close to stitching. Press seam up.

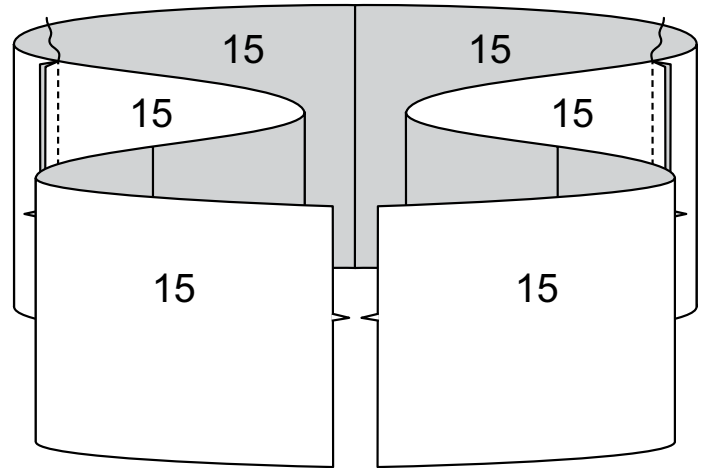


Views C, D:

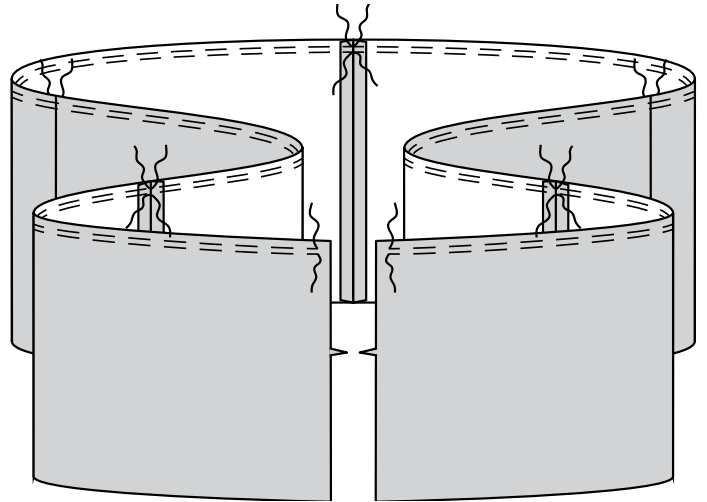
- 41** Prepare, stitch and apply Back Ruffle (13) and Front Ruffle (14) to skirt in same manner as View B. NOTE: Disregard 5/8" (1.5cm) **NARROW HEM**.



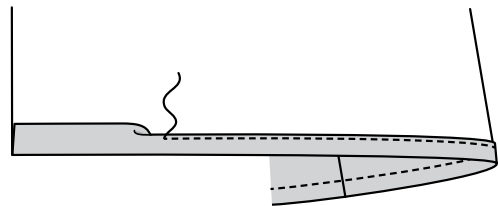
- 42** Stitch **LOWER RUFFLE (15)** sections together, leaving two ends free.



- 43** **GATHER** upper edge of lower ruffle between seamlines.

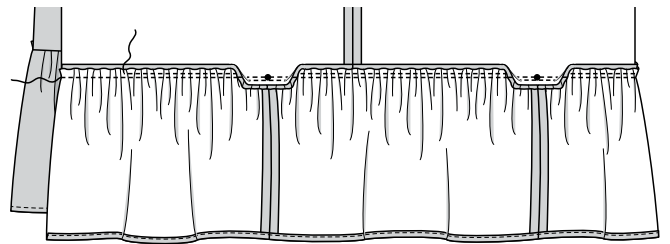


- 44** Make 5/8" (1.5cm) **NARROW HEM** at lower edge of ruffle.

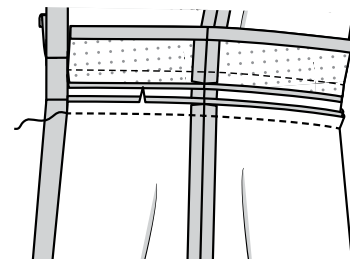


- 45** Pin lower ruffle to front and back ruffle, placing seams at large circles. Adjust gathers; baste. Stitch. Stitch again 1/4" (6mm) away in seam allowance. Trim close to stitching. Press seam up.

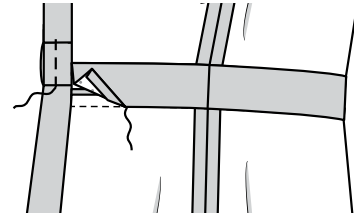
All Views:



- 46** Open out midriff facing. Pin skirt to midriff, matching centers. Stitch. Press seam up.

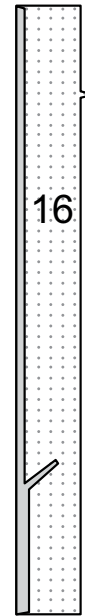


- 47** Turn facing down. **SLIPSTITCH** pressed edge over seam. Baste raw edges together, as shown.

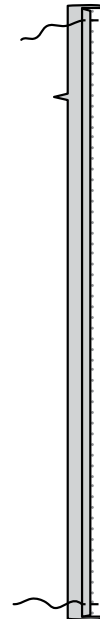


FINISHING

- 48** Turn in seam allowance on long unnotched edge of FRONT BAND (16). Press. Trim pressed seam allowance to $\frac{3}{8}$ " (1cm).

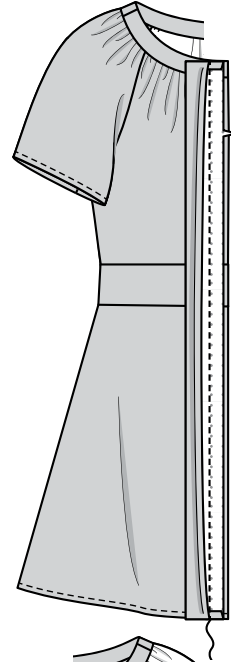


- 49** With right sides together, fold front band along foldline. Stitch upper and lower edges. Trim.



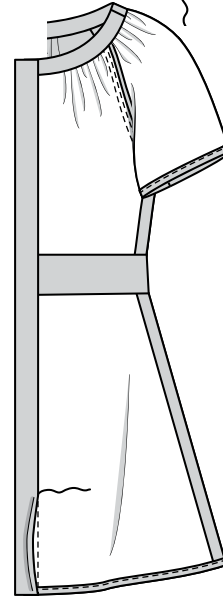
50

Turn; press.
Pin band to front opening edge of dress.
Baste. Stitch, keeping pressed edge free.
Trim. Press seam toward band.



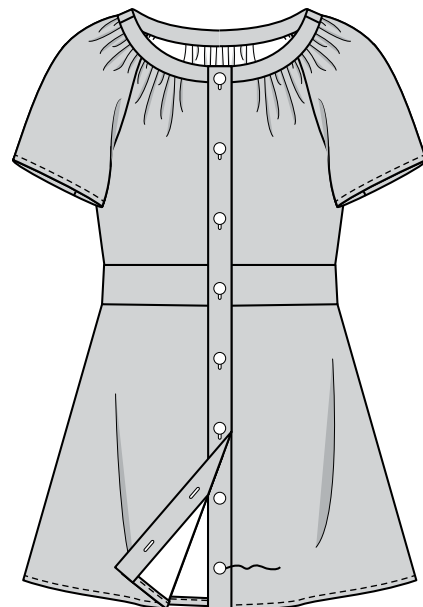
51

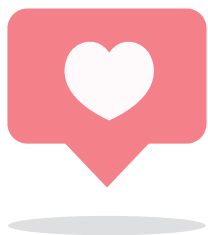
SLIPSTITCH pressed edge over seam.



52

Make buttonholes in right front band at markings. Sew buttons to left front band at markings.





Congrats!


You've completed your sewing adventure!

SHARE YOUR look!



Post your pattern and tag us at
@McCALLPATTERNCOMPANY and use #MCCALLSPATTERNS
for a chance to be featured on our social media!

Look for more McCall's PDF patterns at **McCALLPATTERN.COM**

 1-800-255-2762

Copyright © 2019 CSS Industries, Inc. All Rights Reserved.
Sold for individual home use only and not for commercial or manufacturing purposes.