

- 1 Right Front-A,B

2 Left Front-A,B

3 Right Back-A,B

4 Left Back-A,B

5 Front Facing-A,B

6 Back Facing-A,B

7 Sleeve-A

8 Sleeve Front-B

9 Sleeve Back-B

10 Front-C

11 Back-C

12 Guide for Stay-C
- 1 Devant droit - A, B

2 Devant gauche - A, B

3 Dos droit - A, B

4 Dos gauche - A, B

5 Parementure devant - A, B

6 Parementure dos - A, B

7 Manche - A

8 Manche devant - B

9 Manche dos - B

10 Devant - C

11 Dos - C

12 Guide pour soutien - C

### BODY MEASUREMENTS / MESURES DU CORPS

MISSES/JEUNE FEMME										
Sizes/Tailles	8	10	12	14	16	18	20	22	24	26
Bust (ins)	31½	32½	34	36	38	40	42	44	46	48
Waist	24	25	26½	28	30	32	34	37	39	41
Hip	33½	34½	36	38	40	42	44	46	48	50
Bk. Wst Lgth.	15¾	16	16¾	16½	16¾	17	17¼	17½	17¾	18
T. poitrine (cm)	80	83	87	92	97	102	107	112	117	122
T. taille	61	64	67	71	76	81	87	94	97	104
T. hanches	85	88	92	97	102	107	112	117	122	127
Nuque à taille	40	40.5	41.5	42	42.5	43	44	44	45	46

### FABRIC CUTTING LAYOUTS

⊕ Indicates Bustline, Waistline, Hipline and/or Biceps. Measurements refer to circumference of Finished Garment (Body Measurement + Wearing Ease + Design Ease). Adjust Pattern if necessary.

Lines shown are CUTTING LINES, however, 5/8" (1.5cm) SEAM ALLOWANCES ARE INCLUDED, unless otherwise indicated. See SEWING INFORMATION for seam allowance.

Find layout(s) by Garment/View, Fabric Width and Size. Layouts show approximate position of pattern pieces; position may vary slightly according to your pattern size.

All layouts are for with or without nap unless specified. For fabrics with nap, pile, shading or one-way design, use WITH NAP layout.

RIGHT SIDE OF PATTERN	WRONG SIDE OF PATTERN	RIGHT SIDE OF FABRIC	WRONG SIDE OF FABRIC
-----------------------	-----------------------	----------------------	----------------------

**S/T** = SIZE(S)/TAILLE(S)  
**\*** = WITH NAP/AVEC SENS  
**S/L** = SELVAGE(S)/LISIÈRE(S)  
**AS/TT** = ALL SIZE(S)/TOUTES TAILLE(S)  
**\*\*** = WITHOUT NAP/SANS SENS  
**F/P** = FOLD/PLIURE  
**CF/PT** = CROSSWISE FOLD/PLIURE TRAME

Position fabric as indicated on layout. If layout shows...

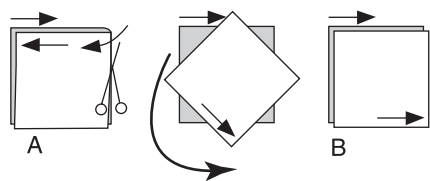
**GRAINLINE**—Place on straight grain of fabric, keeping line parallel to selvage or fold. ON “with nap” layout arrows should point in the same directions. (On Fur Pile fabrics, arrows point in direction of pile.)

**SINGLE THICKNESS**—Place fabric right side up. (For Fur Pile fabrics, place pile side down.)

**DOUBLE THICKNESS**

**WITH FOLD**—Fold fabric right sides together.

✱ **WITHOUT FOLD**—With right sides together, fold fabric **CROSSWISE**. Cut fold from selvage to selvage (A). Keeping right sides together, turn upper layer completely around so nap runs in the same direction as lower layer.



**FOLD**—Place edge indicated exactly along fold of fabric. **NEVER** cut on this line.

When pattern piece is shown like this...

• Cut other pieces first, allowing enough fabric to cut this piece (A). Fold fabric and cut piece on fold, as shown (B).

★ Cut piece only once. Cut other pieces first, allowing enough fabric to cut this piece. Open fabric; cut piece on single layer.

Cut out all pieces along cutting line indicated for desired size using long, even scissor strokes, cutting notches outward.

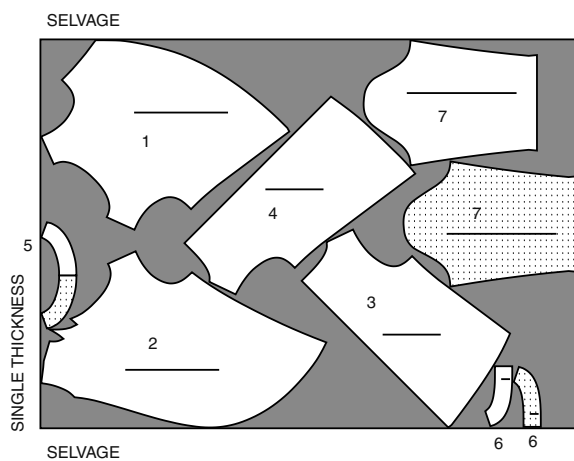
Transfer all markings and lines of construction before removing pattern tissue. (Fur Pile fabrics, transfer markings to wrong side.)

**NOTE:** Broken-line boxes ( a! b! c! ) in layouts represent pieces cut by measurements provided.

### TUNIC A / TUNIQUE A

PIECES: 1 2 3 4 5 6 7

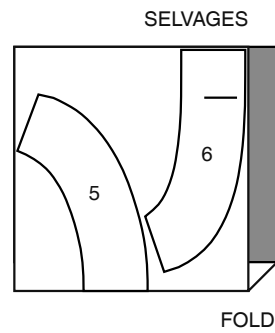
60" (150 cm)  
AS/TT



### INTERFACING A, B / ENTOILAGE A, B

PIECES: 5 6

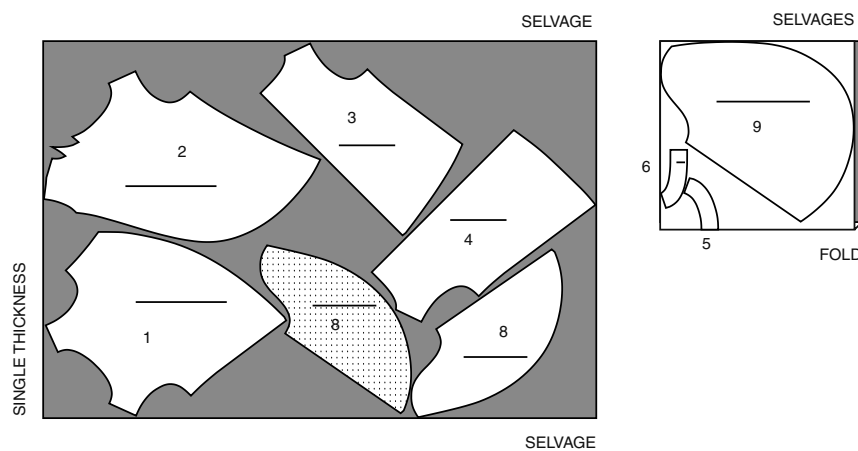
20" (51 cm)  
AS/TT



### TUNIC B / TUNIQUE B

PIECES: 1 2 3 4 5 6 8 9

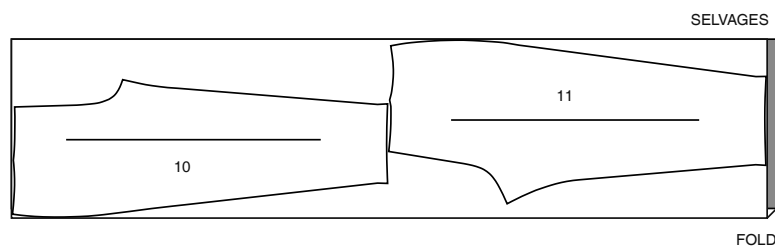
60" (150 cm)  
AS/TT



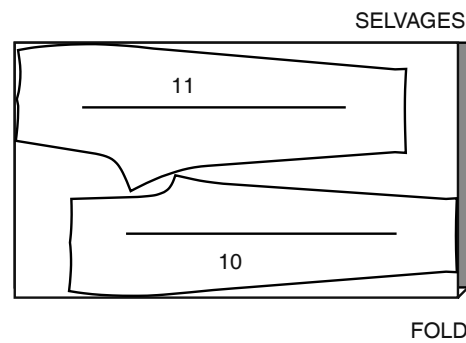
### PANTS C / PANTALON C

PIECES: 10 11

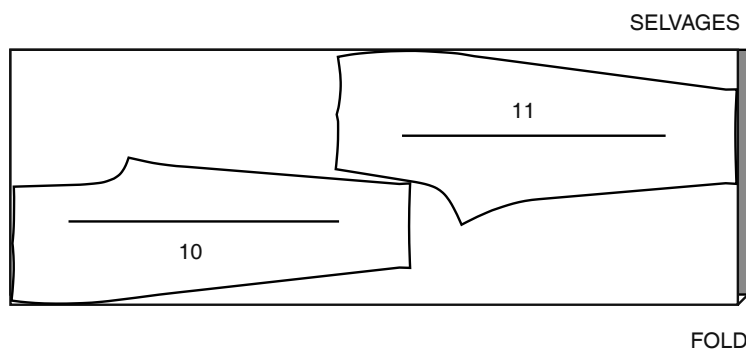
45" (115 cm)  
AS/TT



60" (150 cm)  
S/T  
8 10 12 14 16



60" (150 cm)  
S/T  
18 20 22 24 26



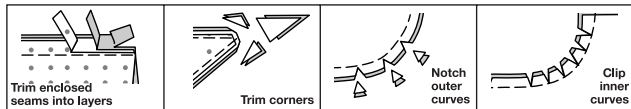
### SEWING INFORMATION

**5/8" (1.5cm) SEAM ALLOWANCES ARE INCLUDED,**  
(unless otherwise indicated)

#### ILLUSTRATION SHADING KEY

Right Side	Wrong Side	Interfacing	Lining	Underlining
------------	------------	-------------	--------	-------------

Press as you sew. Press seams flat, then press open, unless otherwise instructed. Clip seam allowances, where necessary, so they lay flat.



### GLOSSARY

Sewing methods in **BOLD TYPE** have Sewing Tutorial Video available. Scan **QR CODE** to watch videos:

**BABY NARROW HEM**- See **how to sew: a baby narrow hem** video.

**DART** - See **sewing flat dart** video.

**EASE/GATHER** - See **sewing two row gathers** video.

**EDGESTITCH** - See **how to edgestitch** video.

**INVISIBLE ZIPPER** - See **how to sew- invisible zipper** video.

**SLIPSTITCH** - Slide needle through a folded edge, then pick up a thread of underneath fabric.

**STAYSTITCH** - See **how to stay-stitching** video.

**TOPSTITCH** - See **how to topstitch** video.

**UNDERSTITCH** - See **how to understitch** video.

**FINISH** - See **how to finish seam allowances** video.

#### SEWING TUTORIALS

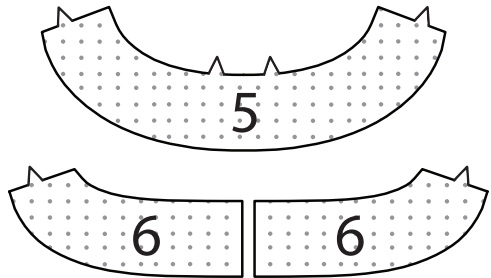


Build your skills viewing short, easy-to-follow videos at  
simplicity.com/sewingtutorials

TUNIC A, B

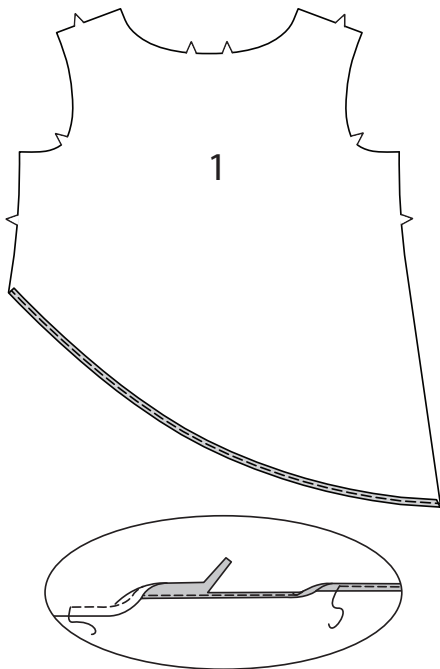
INTERFACING

1. Pin INTERFACING to wrong side of each matching FABRIC section. Fuse, following manufacturer's instructions.

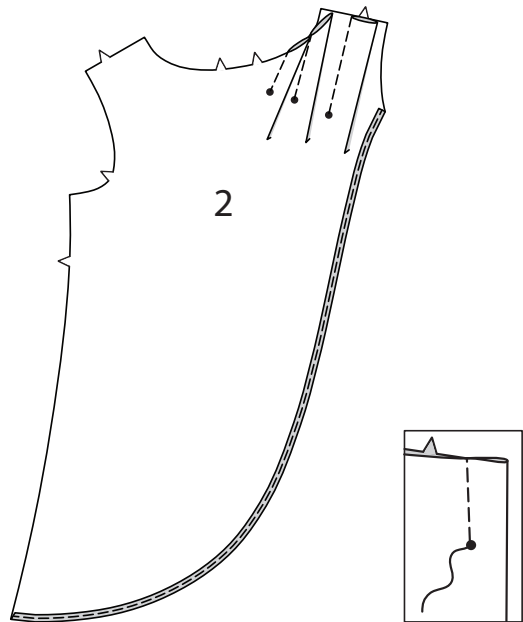


FRONT AND BACK

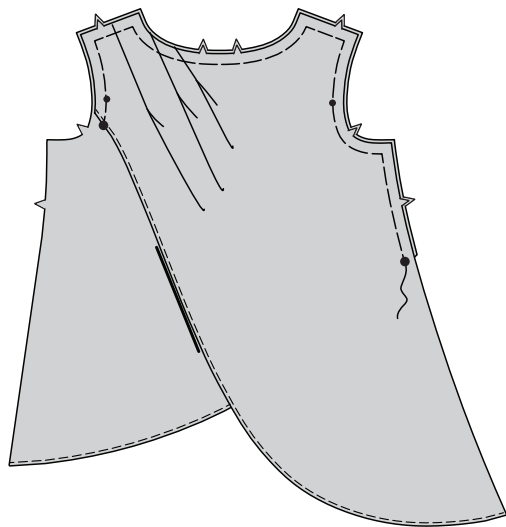
2. To **BABY NARROW HEM** lower edge of RIGHT FRONT (1), press under 1/4" (6mm). Stitch close to pressed edge. Trim close to stitching. Press under 1/8" (3mm). Stitch in place.



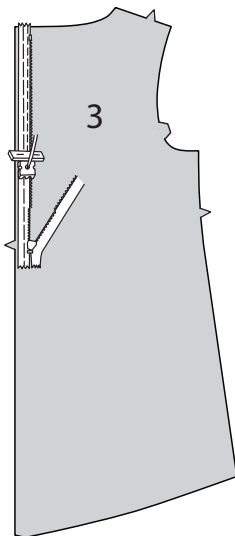
3. To make pleats in LEFT FRONT (2), bring broken lines together, matching small dots. Stitch pleats ending at small dot. Press pleats toward side. **BABY NARROW HEM** lower edge of LEFT front.



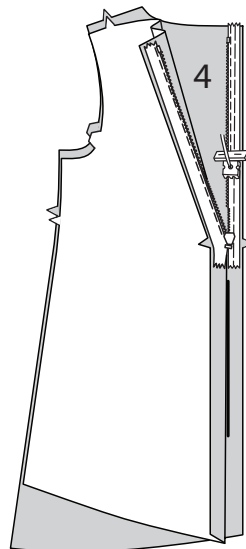
4. With RIGHT sides facing up, pin WRONG side of LEFT front to RIGHT side of RIGHT front, having raw edges even, matching dots. Baste raw edges together. **NOTE:** For more assistance inserting an invisible zipper, see **how to sew- invisible zipper** video



5. Open the zipper and press the tape using a cool iron. On OUTSIDE, pin RIGHT side of the zipper face down on RIGHT BACK (3). Have the coil along the seam line, the tape within the seam allowance and the top stop 3/4" (2cm) below upper edge, as shown. Hand-baste along center of the tape. Position zipper foot at the top of the zipper with RIGHT groove of the foot over coil. Stitch along tape to the notch. Back-stitch to reinforce.

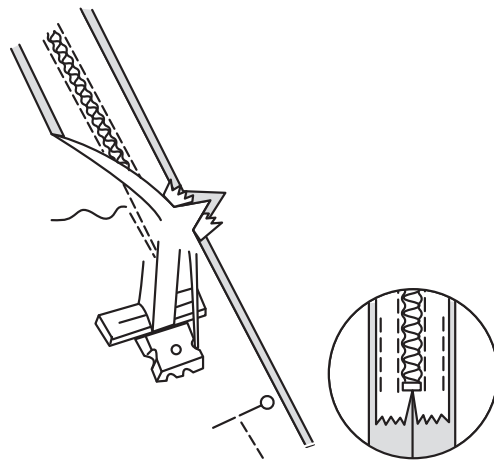
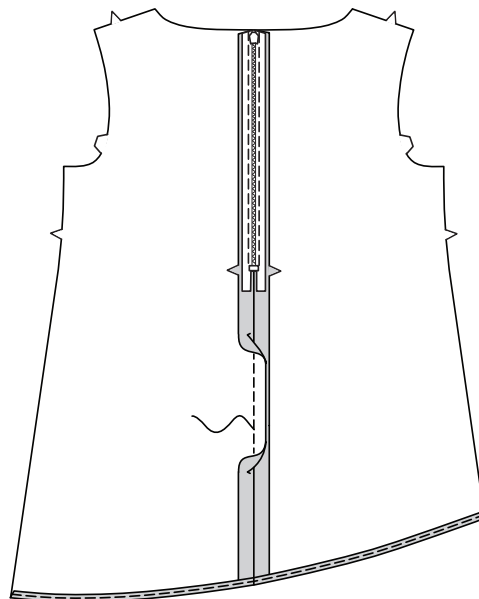


6. Pin the remaining half of the zipper to the LEFT BACK (4) in same manner. Make sure the upper and lower edges of the garment are even. Hand-baste along the center of the tape. Position zipper foot at the top of the zipper with LEFT groove over the coil. Stitch along tape to the notch. Back-stitch to reinforce.

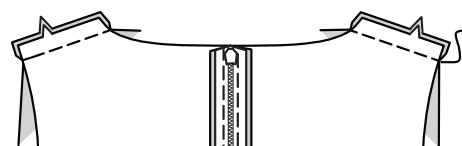


7. Close zipper and check that it is invisible from the OUTSIDE. Pull the free ends of the zipper tape away from the seam allowance. Pin remaining center back seam together below zipper. Position zipper foot all the way to the LEFT so the needle goes down through the outer notch of the foot. Start stitching seam 1/4" (6mm) above lowest stitch and slightly to the LEFT. Stitch seam for about 3" (7.5cm). Stitch remainder of seam using your regular presser foot. If you prefer, open out each seam allowance at end of zipper and stitch tape to seam allowance.

**BABY NARROW HEM** lower edges of back.

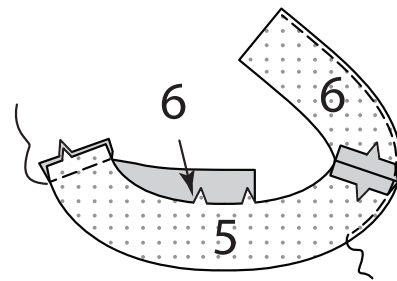


8. With RIGHT sides together, stitch front to back at shoulder seams.

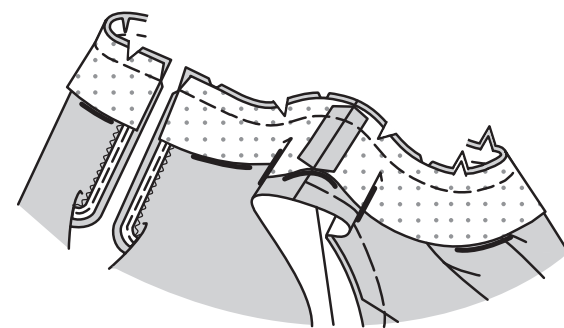


FACING AND SEAMS

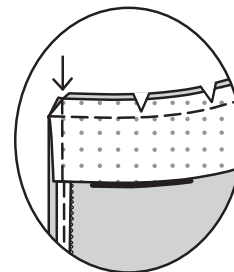
9. With RIGHT sides together, stitch FRONT FACING (5) to BACK FACING (6) at shoulder seams. **FINISH** unmarked edge of facing.



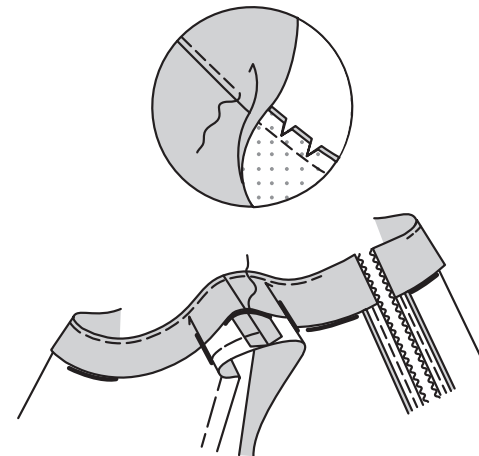
10. Open out center back opening edges of tunic, rolling the zipper teeth away from the opening edge. With RIGHT sides together, pin facing to neck edge, matching centers and side seams. Stitch upper edge. Trim seam; clip curves.



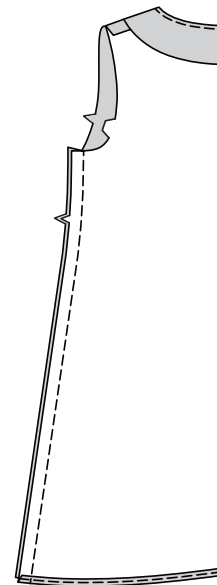
11. Pin back opening edges together. Using an adjustable zipper foot, stitch 1/2" (1.3cm) from back edges, keeping zipper teeth free. Trim corners. Do not trim center back edges.



12. **UNDERSTITCH** facing as far as possible. Turn facing and back edges to INSIDE, rolling zipper teeth back in place; press. To keep the facing from rolling to OUTSIDE, secure it at the seam allowances by tacking it by hand.

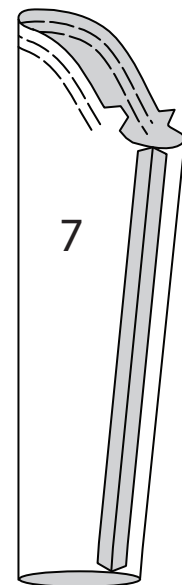


13. With RIGHT sides together, Stitch front to back at side seams.

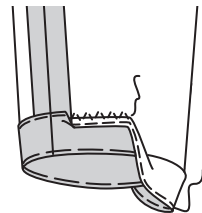


SLEEVES

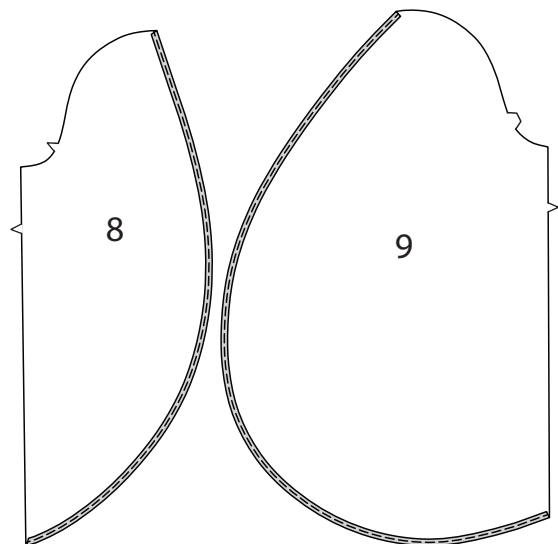
14. **VIEW A- EASE** upper edge of SLEEVE (7) between notches. Stitch sleeve seam.



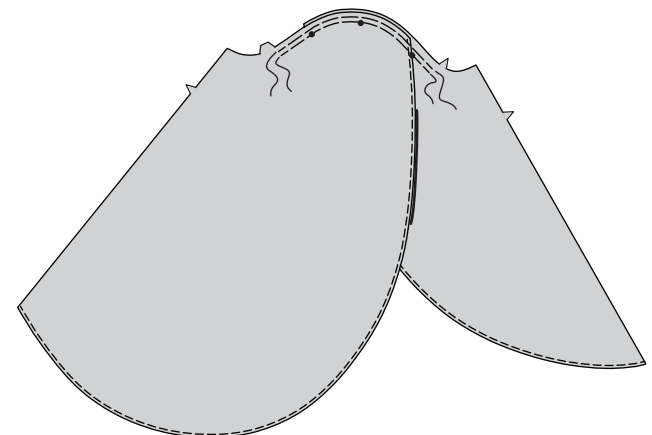
15. Turn up sleeve hem. Baste close to fold. **FINISH** raw edge. Sew hem in place, easing in fullness if necessary. Press.



16. **VIEW B- BABY NARROW HEM** curved edge of SLEEVE FRONT (8) and SLEEVE BACK (9).

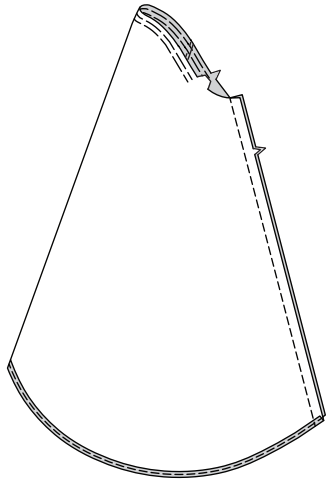


17. With RIGHT sides facing up, pin sleeve back over sleeve front, matching small dots, having raw edges even. Baste sleeve sections together. **EASE** upper edge of sleeve between notches.

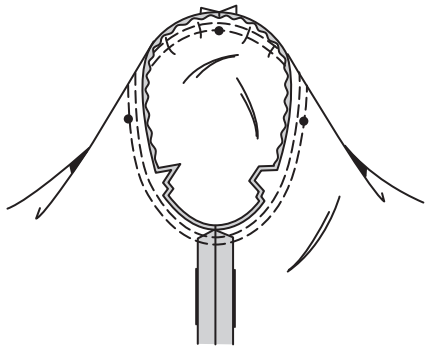




18.Stich underarm seam of sleeve.

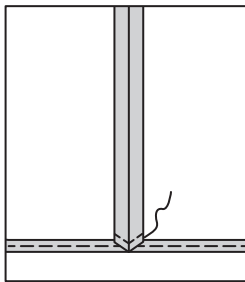


19.VIEWS A, B- With right sides together, pin sleeve into armhole, placing inner small dot at shoulder seam, matching remaining small dots. Adjust ease; baste. Stitch. Stitch again 1/4”(6mm) away in seam allowance. Trim close to stitching. Press seam allowances flat. Turn seam toward sleeve.



FINSIHING

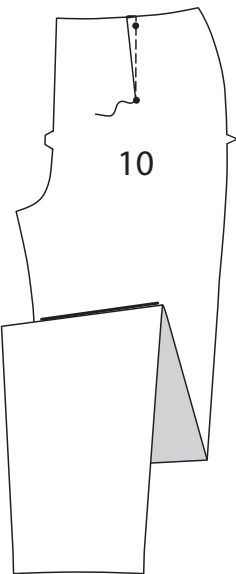
20.Diagonally, turn under ends of seam allowances, as shown. Hand-tack to secure.



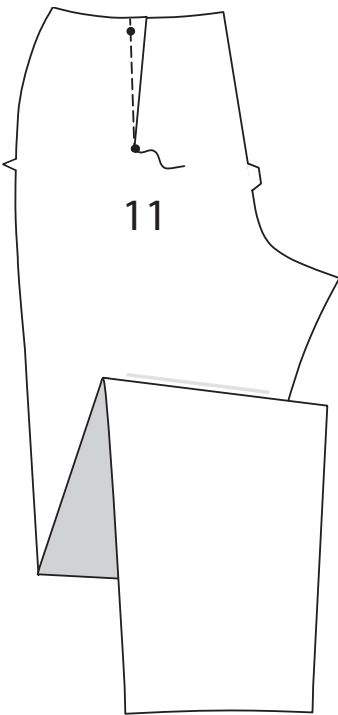
PANTS C

FRONT AND BACK

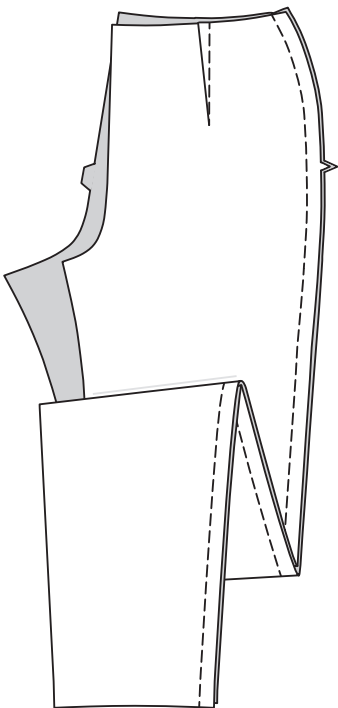
1. Stitch **DART** in FRONT (10). Press toward center.



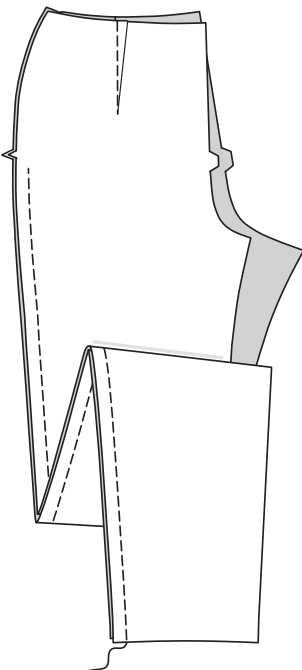
2. Stitch **DART** in BACK (11). Press toward center.



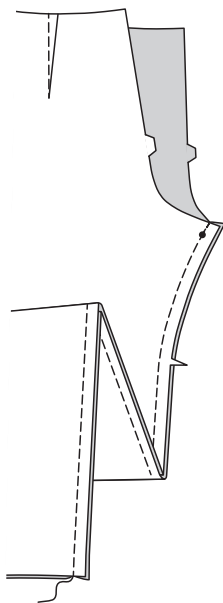
3. Stitch RIGHT front and back together at side.



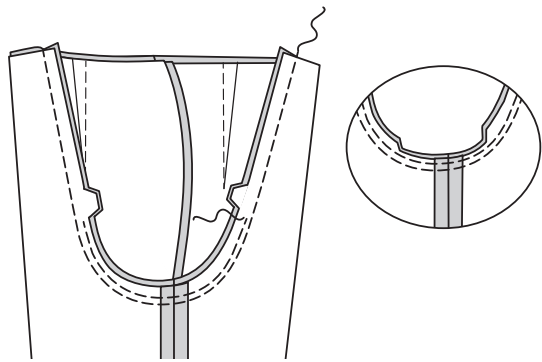
4. Stitch LEFT front and back together at side, leaving open from 1”(2.5cm) below notch to upper edge.



5. Pin front and back together at inner leg. Stitch, stretching back to fit above notch.



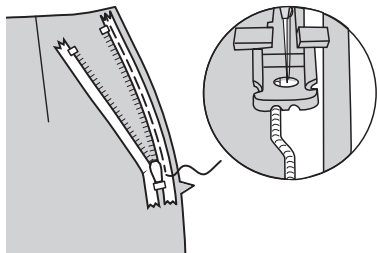
6. For crotch seam, turn one pant leg right side out; slip inside remaining pant leg. Stitch. Stitch again 1/4”(6mm) away in seam allowance along curved edge. Trim close to second stitching.



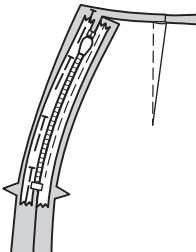
ZIPPER

**NOTE:** Use special invisible zipper foot when stitching invisible zipper.

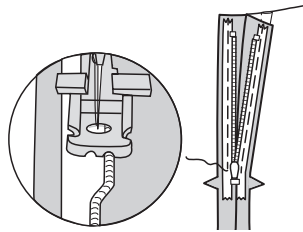
7. Open zipper. On OUTSIDE, pin zipper to left front opening edge, face down in seam allowance, placing zipper tape 1/4”(6mm) down from upper edge of fabric and zipper teeth on seamline. Position LEFT-hand groove of zipper foot over teeth; stitch close to teeth, ending at notch.



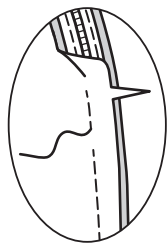
8. Close zipper. Pin remaining zipper tape to LEFT back opening edge, placing zipper teeth on seamline.



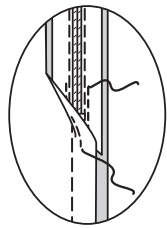
9. Open zipper. Position RIGHT hand groove of zipper foot over teeth; stitch to notch.



10. Close zipper. Slide zipper foot to the LEFT. Pin front and back sections together below zipper. Position and lower needle slightly above and to the LEFT of zipper stitching at notch. Stitch remainder of LEFT side seam below notch, connecting with previous stitching.

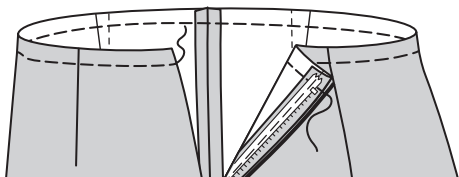


11. Stitch or hand-sew each end of zipper tape to seam allowances, keeping pants free when stitching.

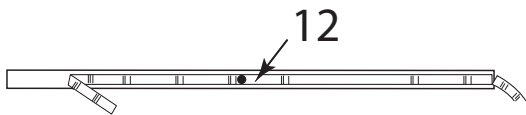


FINISHING

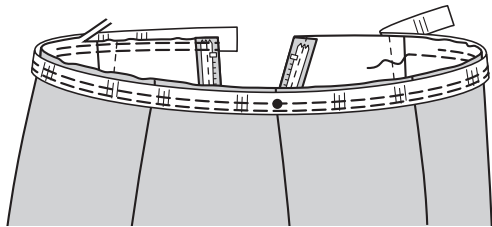
12. **EASESTITCH** upper edge of pants using one row of long stitches.



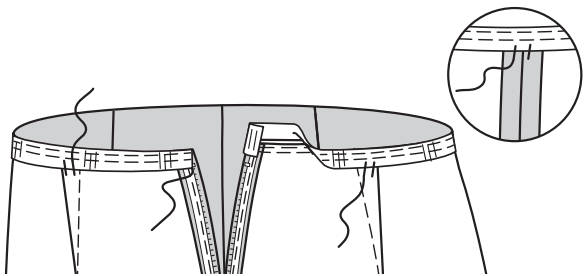
13. Cut one piece of grosgrain ribbon the length of GUIDE FOR STAY (12). Transfer markings.



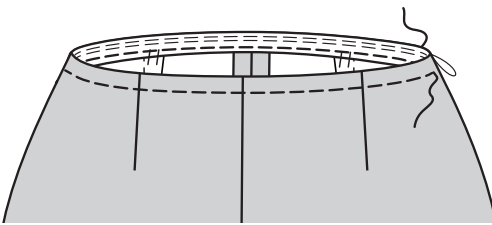
14. On OUTSIDE, pin ribbon to upper edge of pants, placing one long edge along seamline, matching centers and small dot to RIGHT side seam. Adjust ease; baste. Stitch close to lower edge of ribbon and again 1/4”(6mm) away, as shown. Trim seam allowance close to stitching, being careful not to cut ribbon.



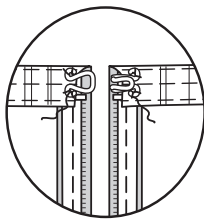
15. Turn ribbon to inside along seamline, turning in ends to clear zipper teeth. **SLIPSTITCH** to zipper tape. Tack at seams and darts.



16. **TOPSTITCH** upper edge of pants.



17. Sew hook and eye to ribbon, as shown.



18. Turn up hem. Baste close to fold. **FINISH** raw edge. Sew hem in place, easing in fullness if necessary. Press.

