

- 1 BODICE FRONT - A,B,C  
2 BODICE BACK - A,B,C  
3 BODICE SIDE FRONT - A,B,C  
4 BODICE SIDE BACK-A,B,C  
5 RUFFLE - A,B,C  
6 SKIRT FRONT - A,B  
7 SKIRT BACK - A,B  
8 FRONT AND BACK BAND - A  
9 GUIDE FOR BUTTOMHOLE - A,B,C  
10 FRONT AND BACK RUFFLE - B  
11 FRONT RUFFLE - C  
12 BACK RUFFLE - C  
13 FRONT - D,E  
14 BACK - D,E  
15 POCKET - D,E

- 1 CORSAGE DEVANT - A, B, C  
2 CORSAGE DOS - A, B, C  
3 CORSAGE CÔTÉ DEVANT - A, B, C  
4 CORSAGE CÔTÉ DOS - A, B, C  
5 VOLANT - A, B, C  
6 JUPE DEVANT - A, B  
7 JUPE DOS - A, B  
8 BANDE DEVANT ET DOS - A  
9 GUIDE POUR BOUTONNIÈRE - A, B, C  
10 VOLANT DEVANT ET DOS - B  
11 VOLANT DEVANT - C  
12 VOLANT DOS - C  
13 DEVANT - D, E  
14 DOS - D, E  
15 POCHE - D, E

BODY MEASUREMENTS / MESURES DU CORPS

Sizes/Tailles	CHILDREN'S/ENFANT				GIRLS/FILLE	
	3	4	5	6	7	8
Chest (ins)	22	23	24	25	26	27
Waist	20½	21	21½	22	23	23½
Hip	25	26	26½	27	30	32
Height	38	41	44	47	50	52
T. poitrine (cm)	56	58	61	64	66	69
T. taille	52	53	55	56	58	60
T. hanches	64	66	67	69	76	81
Hauteur	97	104	112	119	127	132

FABRIC CUTTING LAYOUTS

⊕ Indicates Bustline, Waistline, Hipline and/or Biceps. Measurements refer to circumference of Finished Garment (Body Measurement + Wearing Ease + Design Ease). Adjust Pattern if necessary.

Lines shown are CUTTING LINES, however, 5/8" (1.5cm) SEAM ALLOWANCES ARE INCLUDED, unless otherwise indicated. See SEWING INFORMATION for seam allowance.

Find layout(s) by Garment/View, Fabric Width and Size. Layouts show approximate position of pattern pieces; position may vary slightly according to your pattern size.

All layouts are for with or without nap unless specified. For fabrics with nap, pile, shading or one-way design, use WITH NAP layout.

RIGHT SIDE OF PATTERN	WRONG SIDE OF PATTERN	RIGHT SIDE OF FABRIC	WRONG SIDE OF FABRIC
-----------------------	-----------------------	----------------------	----------------------

S/T = SIZE(S)/TAILLE(S)  
\* = WITH NAP/AVEC SENS  
S/L = SELVAGE(S)/LISIÈRE(S)  
AS/TT = ALL SIZE(S)/TOUTES TAILLE(S)  
\*\* = WITHOUT NAP/SANS SENS  
F/P = FOLD/PLIURE  
CF/PT = CROSSWISE FOLD/PLIURE TRAME

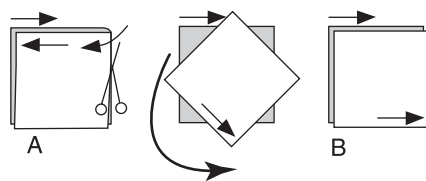
Position fabric as indicated on layout. If layout shows...  
**GRAINLINE**—Place on straight grain of fabric, keeping line parallel to selvage or fold. ON “with nap” layout arrows should point in the same directions. (On Fur Pile fabrics, arrows point in direction of pile.)

**SINGLE THICKNESS**—Place fabric right side up. (For Fur Pile fabrics, place pile side down.)

DOUBLE THICKNESS

WITH FOLD—Fold fabric right sides together.

\* WITHOUT FOLD—With right sides together, fold fabric CROSSWISE. Cut fold from selvage to selvage (A). Keeping right sides together, turn upper layer completely around so nap runs in the same direction as lower layer.



**FOLD**—Place edge indicated exactly along fold of fabric. NEVER cut on this line.

When pattern piece is shown like this...

• Cut other pieces first, allowing enough fabric to cut this piece (A). Fold fabric and cut piece on fold, as shown (B).

★ Cut piece only once. Cut other pieces first, allowing enough fabric to cut this piece. Open fabric; cut piece on single layer.

Cut out all pieces along cutting line indicated for desired size using long, even scissor strokes, cutting notches outward.

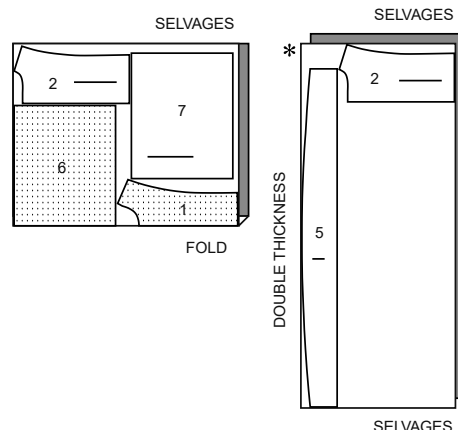
Transfer all markings and lines of construction before removing pattern tissue. (Fur Pile fabrics, transfer markings to wrong side.)

**NOTE:** Broken-line boxes ( a! b! c! ) in layouts represent pieces cut by measurements provided.

DRESS A, B / ROBE A, B

PIECES: 1 2 5 6 7

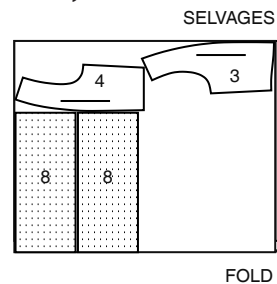
45" (115 cm)\*  
AS/TT



CONTRAST A (Side Front and Back, Skirt Band)  
CONTRASTE A (Côté devant et dos, Bande de jupe)

PIECES: 3 4 8

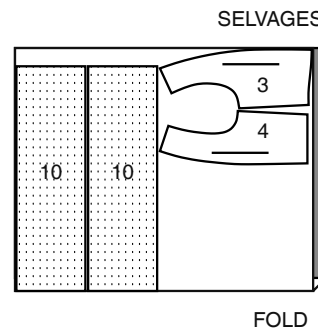
45" (115 cm)\*  
AS/TT



CONTRAST B (Side Front and Back, Skirt ruffle)  
CONTRASTE B (Côté devant et dos, Volant de jupe)

PIECES: 3 4 10

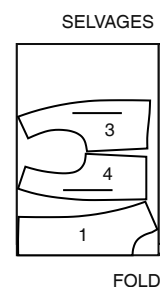
45" (115 cm)\*  
AS/TT



LINING A, B, C  
DOUBLURE A, B, C

PIECES: 1 3 4

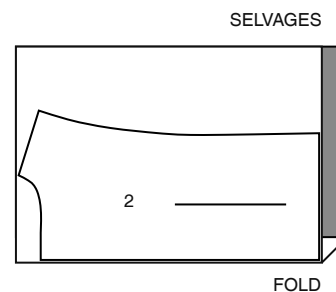
45" (115 cm)\*\*  
AS/TT



INTERFACING A, B, C / ENTOILAGE A, B, C

PIECES: 2

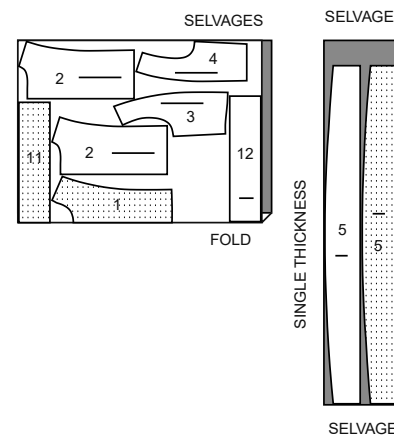
20" (51cm)  
AS/TT



TOP C / HAUT C

PIECES: 1 2 3 4 5 11 12

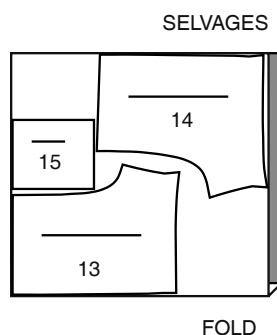
45" (115 cm)\*  
AS/TT



SHORTS D / SHORT D

PIECES: 13 14 15

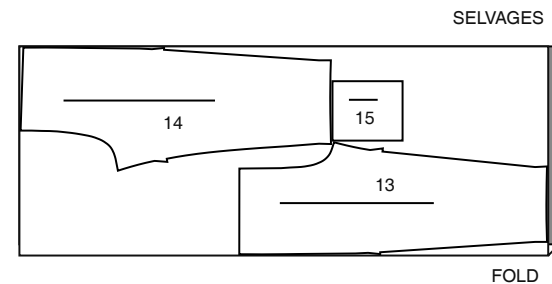
45" (115 cm)\*  
AS/TT



PANTS E / PANTALON E

PIECES: 13 14 15

45" (115 cm)\*  
AS/TT



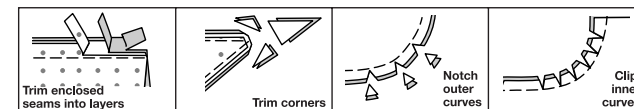
SEWING INFORMATION

5/8" (1.5cm) SEAM ALLOWANCES ARE INCLUDED,  
(unless otherwise indicated)

ILLUSTRATION SHADING KEY

Right Side	Wrong Side	Interfacing	Lining	Underlining
------------	------------	-------------	--------	-------------

Press as you sew. Press seams flat, then press open, unless otherwise instructed. Clip seam allowances, where necessary, so they lay flat.



GLOSSARY

Sewing methods in **BOLD TYPE** have Sewing Tutorial Video available. Scan **QR CODE** to watch videos:

**EASE/GATHER** - see **sewing two row gathers** video.

**EDGESTITCH** - see **how to edgestitch** video.

**NARROW HEM** - see **sewing narrow hems** video.

**SLIPSTITCH** - see **how to slipstitch** video.

**STAYSTITCH** - see **how to do stay-stitching** video.

**TOPSTITCH** - see **how to topstitch** video.

**UNDERSTITCH** - see **how to understitch** video.

SEWING TUTORIALS



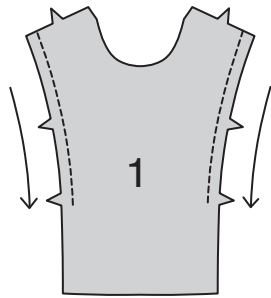
Build your skills viewing short, easy-to-follow videos at  
simplicity.com/sewingtutorials

## DRESS A, B, TOP C

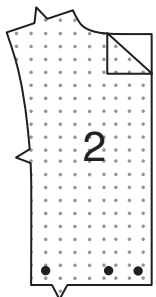
**NOTE:** Under each sub-heading, the first View will be illustrated, unless otherwise indicated

### BODICE

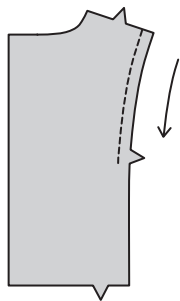
- 1. STAYSTITCH** side edges of BODICE FRONT (1) above lower notches, as shown.



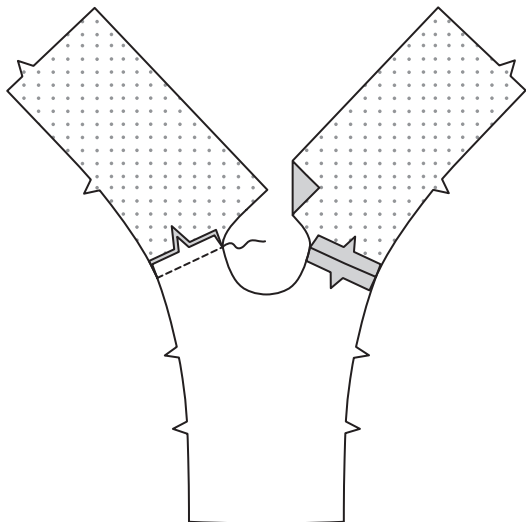
- 2. Pin INTERFACING (2) to wrong side of BODICE BACK (2). Fuse, following manufacturer's instructions. NOTE:** Uninterfaced bodice back sections will be used as lining.



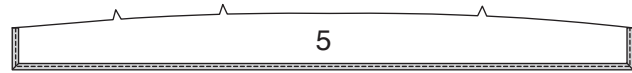
- 3. STAYSTITCH** side edges of bodice back above notches, as shown.



- 4. Stitch** bodice back sections to bodice front at shoulders.



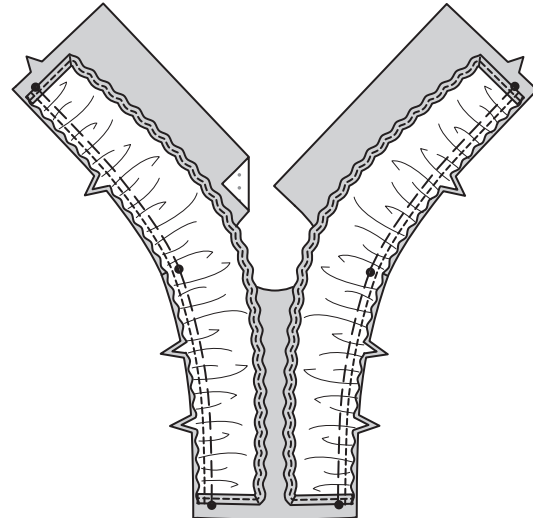
- 5. Make NARROW HEM** at lower and side edges of RUFFLE (5).



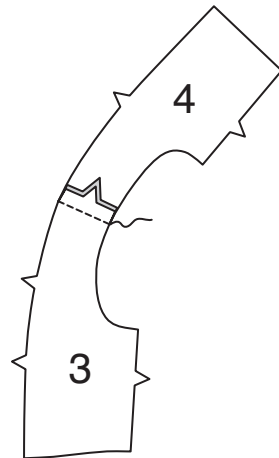
- 6. GATHER** upper edge of ruffle.



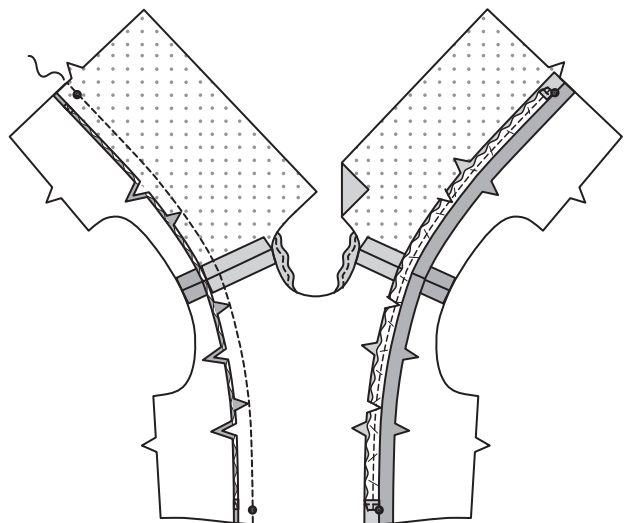
- 7. With RIGHT sides together, pin ruffle to side edges of front and back, matching notches, placing center small dot at shoulder seam, matching remaining small dots. Adjust gathers; baste.**



- 8. Stitch BODICE SIDE FRONT (3) to BODICE SIDE BACK (4) at shoulder edge.**



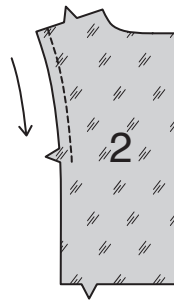
- 9. With RIGHT sides together, pin side front and side back sections to front and back, matching notches and seams, clipping front and back where necessary. Baste. Stitch.**



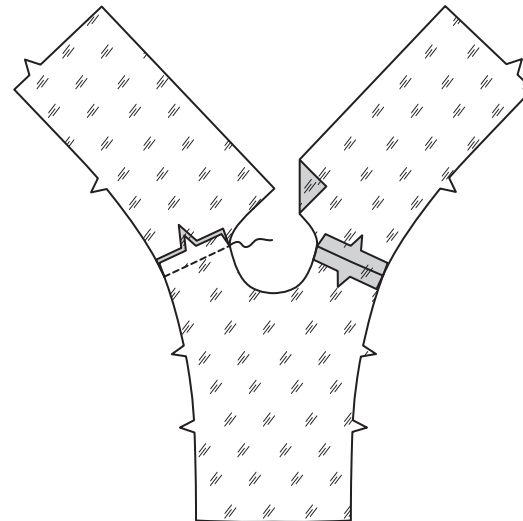
- 10. STAYSTITCH** side edges of bodice front LINING (1) above lower notches, as shown.



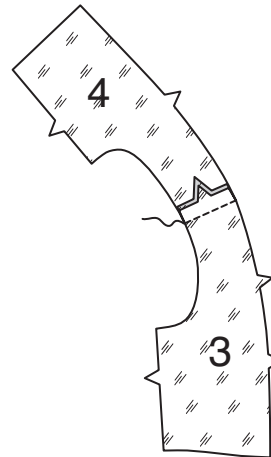
- 11. STAYSTITCH** side edges of bodice back LINING above notches, as shown.



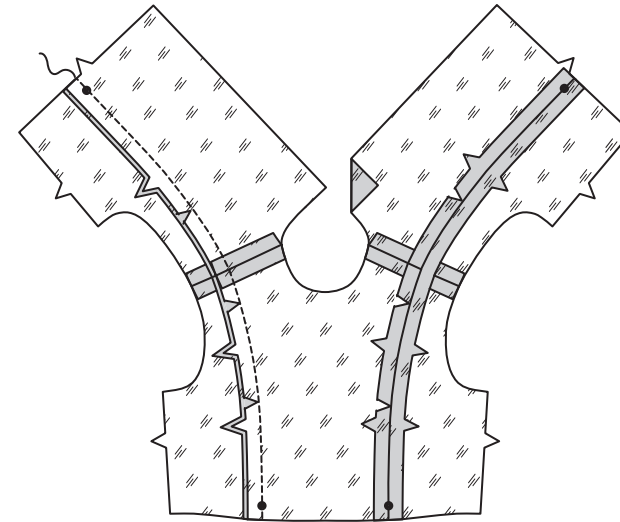
- 12. Stitch** bodice back sections to bodice front at shoulders.



- 13. Stitch** bodice side front LINING (3) to bodice side back LINING (4) at shoulder edge.

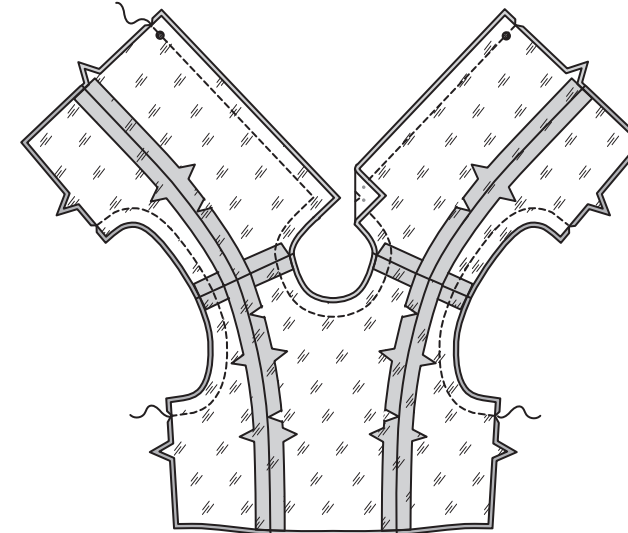


- 14. With RIGHT sides together, pin side front and side back lining sections to front and back lining, matching notches and seams, clipping front and back lining where necessary. Baste. Stitch.**

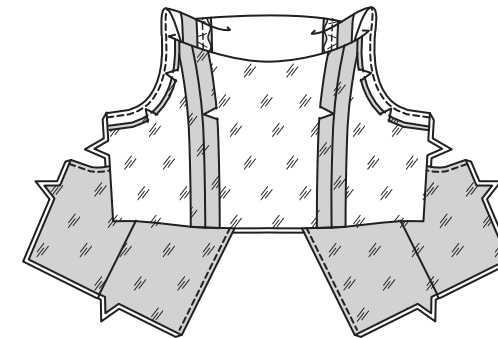


- 15. With RIGHT sides together, pin lining to bodice, matching centers. Stitch neck, back and armhole edges, being careful not to catch ruffle in stitching. Trim.**

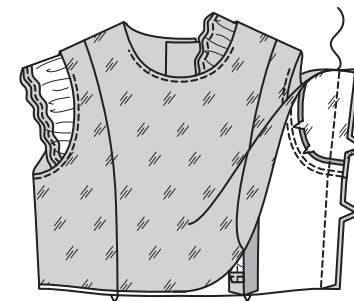
**UNDERSTITCH** lining as far as possible.



- 16. Turn** bodice RIGHT side out by pulling each back section through the shoulders and out through lower front opening, as shown. Press.



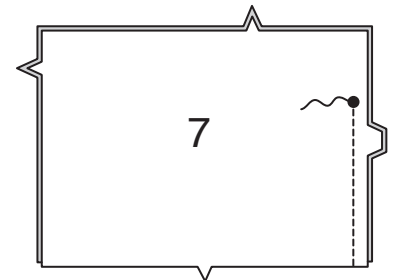
- 17. Pin** front and back together at sides; pin lining edges together. Stitch in one continuous seam.



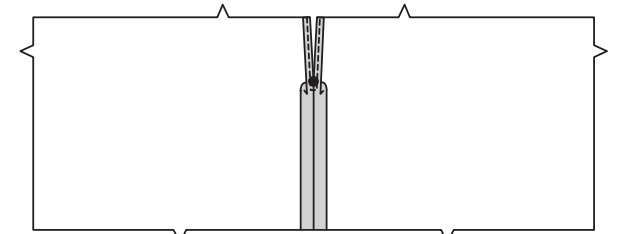
## SKIRT A, B, RUFFLE C

**VIEWS A, B:**

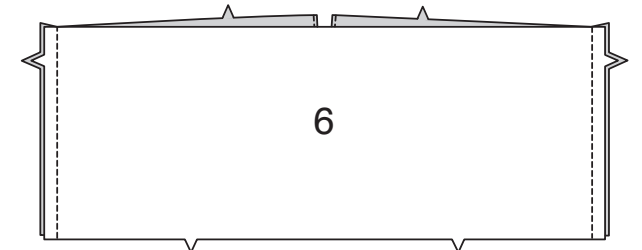
- 18. Stitch** SKIRT BACK (7) sections together at center back, leaving open above large dot.



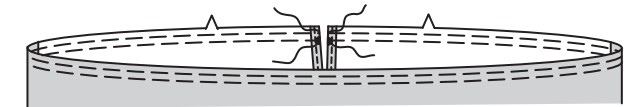
- 19. Make NARROW HEM** at back opening edges, tapering to nothing below large dot. Pivot across seam 1/4" (6mm) below large dot when stitching.



- 20. Stitch** SKIRT FRONT (6) to skirt back at sides.

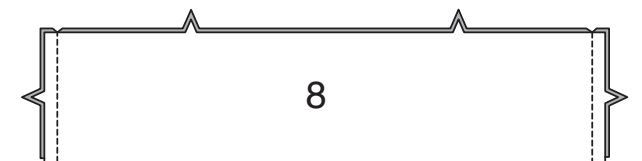


- 21. GATHER** upper edge of skirt.



**VIEW A:**

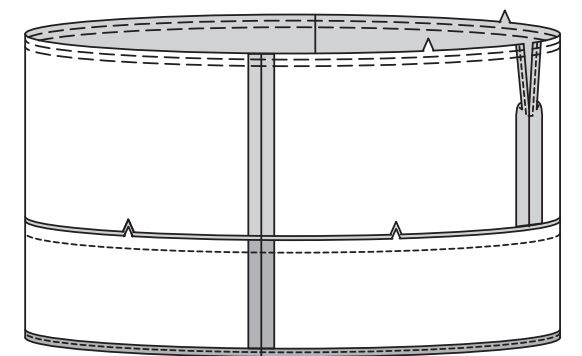
- 22. Stitch** FRONT AND BACK BAND (8) sections together at sides.



- 23. Make NARROW HEM** at lower edge of front and back band.

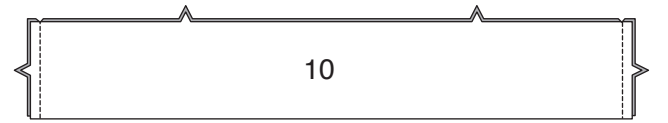


- 24. Pin** front and back band to lower edge of skirt, matching centers and seams. Stitch.





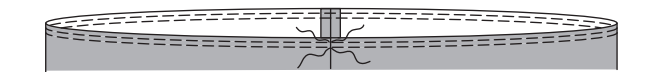
VIEW B:  
25. Stitch FRONT AND BACK RUFFLE (10) sections together at sides.



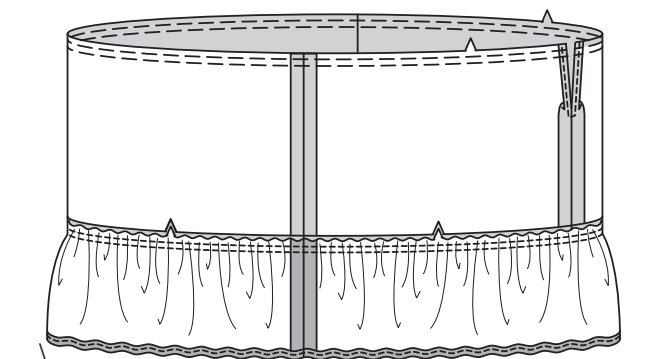
26. Make **NARROW HEM** at lower edge of ruffle.



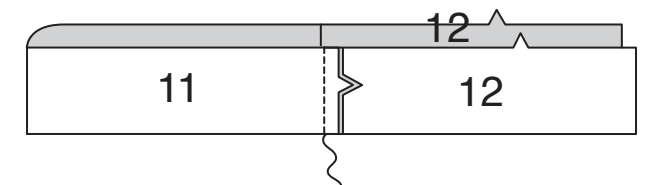
27. **GATHER** upper edge of ruffle.



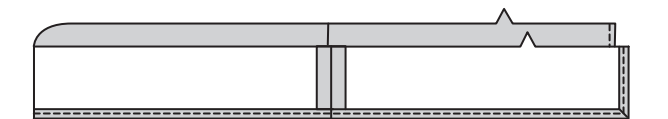
28. Pin ruffle to lower edge of skirt, matching centers and seams. Adjust gathers; baste. Stitch. Press seam toward skirt.



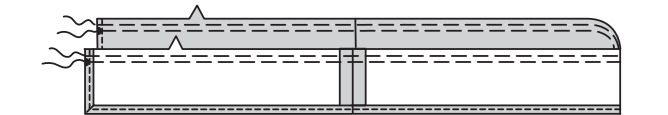
VIEW C:  
29. Stitch BACK RUFFLE (12) sections to FRONT RUFFLE (11) at side edges, matching notches.



30. Make **NARROW HEM** at lower and side edges of ruffle.

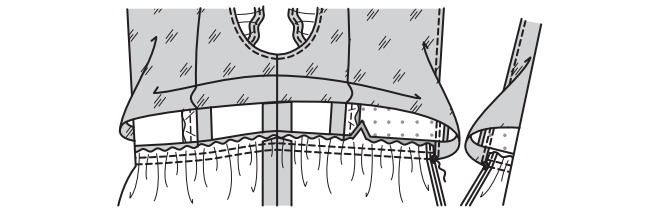


31. **GATHER** upper edge of ruffle.

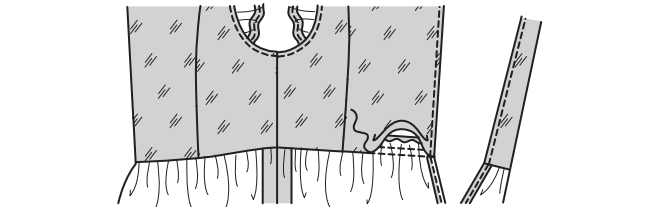


FINISHING

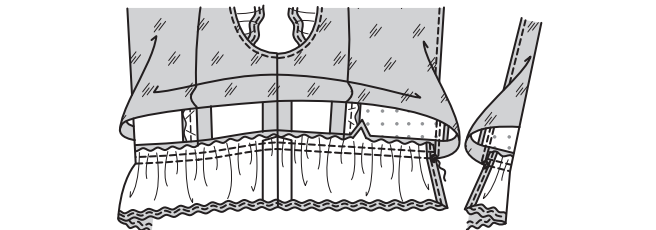
VIEWS A, B:  
32. With **RIGHT** sides together, pin skirt to lower edge of bodice, matching centers and symbols. Adjust gathers; baste. Stitch. Press seam toward bodice, pressing in remainder of seam allowance on lower edge of lining.



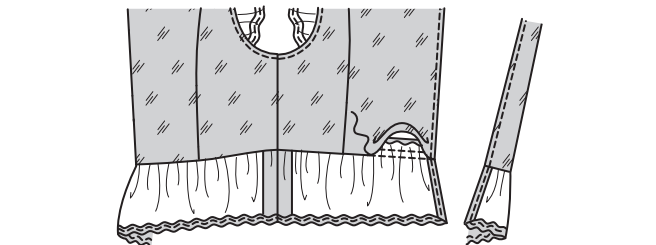
33. **SLIPSTITCH** pressed edge over seam.



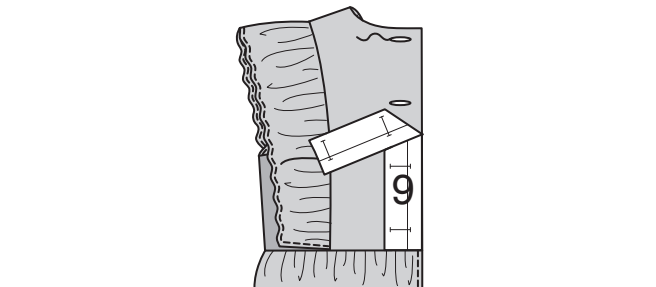
VIEW C:  
34. With **RIGHT** sides together, pin ruffle to lower edge of top, matching centers and symbols. Adjust gathers; baste. Stitch. Press seam toward top, pressing in remainder of seam allowance on lower edge of lining.



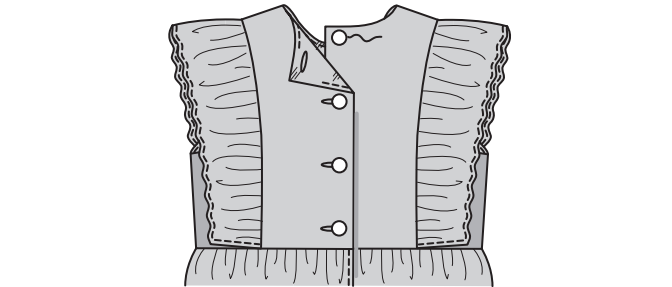
35. **SLIPSTITCH** pressed edge over seam.



**ALL VIEWS:**  
36. Place **GUIDE FOR BUTTONHOLES** (9) on left back, having edges of tissue even with finished edges of garment, as shown. Transfer markings. Make buttonholes at markings.



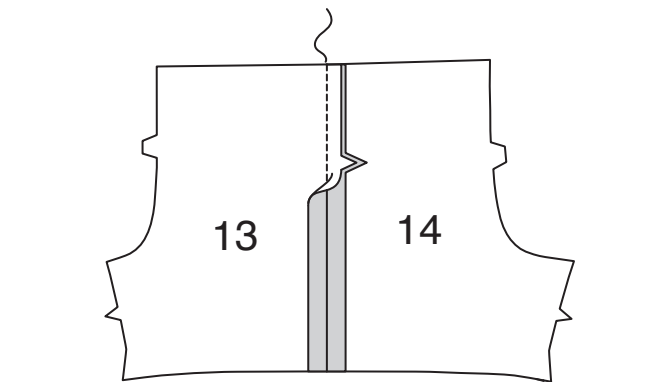
37. Lap opening edges, as shown, matching centers. Using buttonholes as guides, make button markings on right back. Sew buttons at markings.



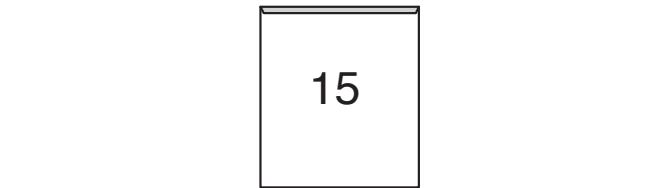
SHORTS D, PANTS E

FRONT AND BACK

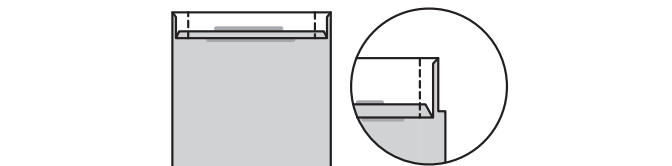
1. Stitch **FRONT** (13) to **BACK** (14) at side edges.



2. Turn in 1/4 (6mm) on upper edge of each **POCKET** (15). Press.

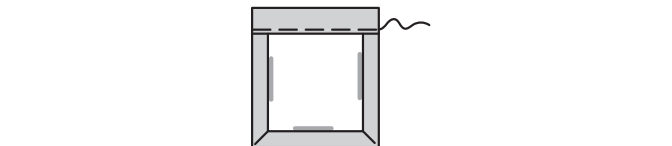


3. Turn upper edge to outside along foldline. Stitch ends. Trim.

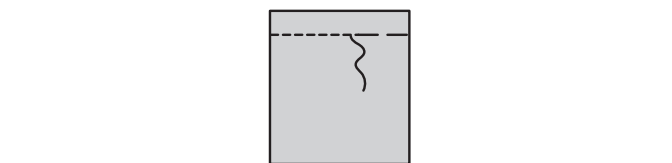


4. Turn upper edge of pocket to inside, turning in remaining seam allowances. Press.

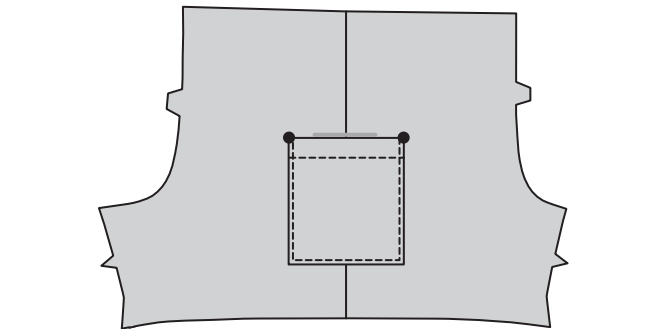
Baste close to inner pressed edge.



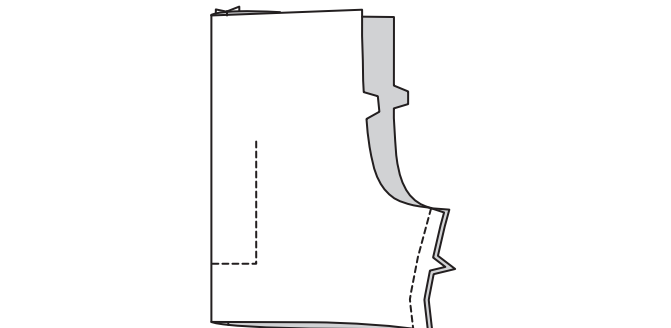
5. **TOPSTITCH** along basting.



6. Pin pocket to front and back matching symbols. **EDGESTITCH** side and lower edges, reinforcing upper ends.

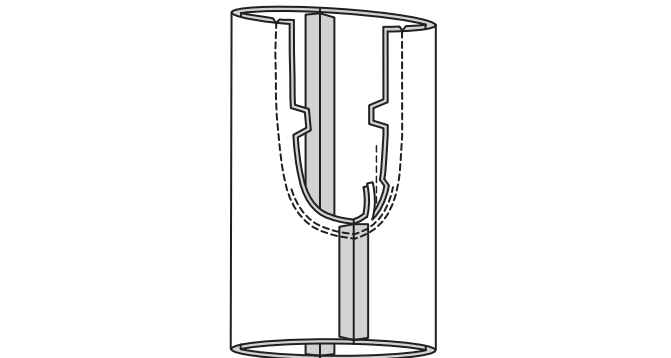


7. Stitch front to back at inner leg edge.

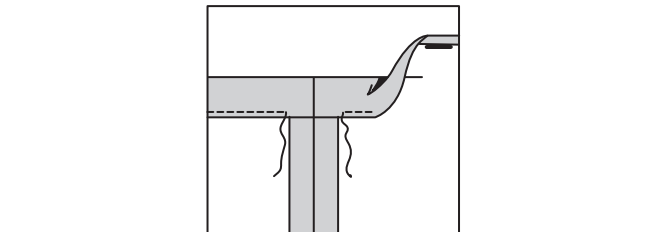


8. For crotch seam, turn one leg right side out. Slip inside remaining leg.

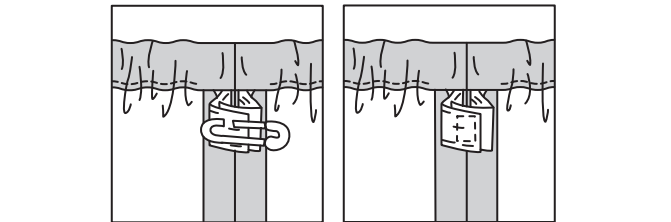
Stitch. Stitch again 1/4" (6mm) away in seam allowance along curve. Trim close to second stitching.



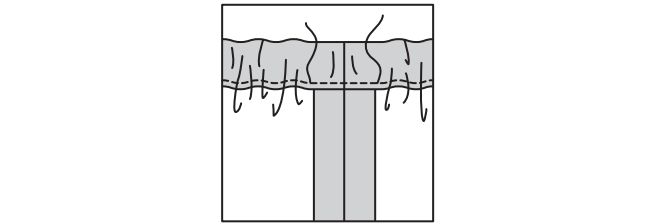
9. To form casing for elastic, turn 1 1/8"(2.9cm) on upper edge of pants to inside, turning in 1/4"(6mm) on raw edge; press. Stitch, as shown, leaving an opening.



10. Cut elastic, the measurement of waist, plus 1"(2.5cm). Insert elastic through opening. Lap ends; hold with safety pin. Try on; adjust if necessary. Stitch ends of elastic securely.

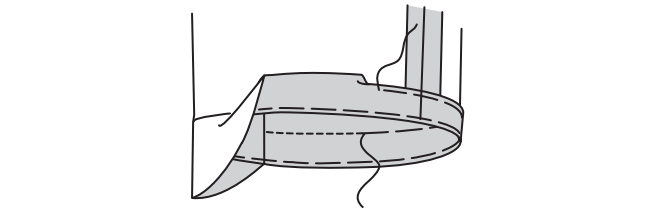


11. Stitch opening, stretching elastic while stitching.



12. Turn up garment hem. Baste close to fold. Turn in 1/4"(6mm) on raw edge. Baste hem in place close to upper edge. Press.

**TOPSTITCH** hem along upper basting.



FRANÇAIS

PLANS DE COUPE

Indique: pointe de poitrine, ligne de taille, de hanches et/ou avantbras. Ces mesures sont basées sur la circonférence du vêtement fini. (Mesures du corps + Aisance confort + Aisance mode) Ajuster le patron si nécessaire.

Les lignes épaisses sont les **LIGNES DE COUPE**, cependant, des rentrés de 1.5cm sont compris, sauf si indiqué différemment. Voir **EXPLICATIONS DE COUTURE** pour largeur spécifiée des rentrés.

Choisir le(s) plan(s) de coupe selon modèle/largeur du tissu/taille. Les plans de coupe indiquent la position approximative des pièces et peut légèrement varier selon la taille du patron.

Les plans de coupe sont établis pour tissu avec/sans sens. Pour tissu avec sens, pelucheux ou certains imprimés, utiliser un plan de coupe **AVEC SENS** Les plans de coupe sont établis pour tissu avec/sans sens. Pour tissu avec sens, pelucheux ou certains imprimés, utiliser un plan de coupe **AVEC SENS**.

ENDROIT DU PATRON	ENVERS DU PATRON	ENDROIT DU TISSU	ENVERS DU TISSU
-------------------	------------------	------------------	-----------------

**S/T** = SIZE(S)/TAILLE(S)  
\* = WITH NAP/AVEC SENS  
**S/L** = SELVAGE(S)/LISIÈRE(S)  
**AS/TT** = ALL SIZE(S)/TOUTES TAILLE(S)  
\*\* = WITHOUT NAP/SANS SENS  
**F/P** = FOLD/PLIURE  
**CF/PT** = CROSSWISE FOLD/PLIURE TRAME

Disposer le tissu selon le plan de coupe. Si ce dernier indique...

**DROIT FIL**—A placer sur le droit fil du tissu, parallèlement aux lisières ou au pli. Pour plan "avec sans," les flèches seront dirigées dans la même direction. (Pour fausse fourrure, placer la pointe de la flèche dans le sens descendant des poils.)

**SIMPLE EPAISSEUR**—Placer l'endroit sur le dessus. (Pour fausse fourrure, placer le tissu l'endroit dessous.)

**DOUBLE EPAISSEUR**

